

**SCREENING REPORT FOR AN ENVIRONMENTAL AUTHORIZATION AS  
REQUIRED BY THE 2014 EIA REGULATIONS – PROPOSED SITE  
ENVIRONMENTAL SENSITIVITY**

**EIA Reference number:** 07036

**Project name:** Lephale Iron Ore Project

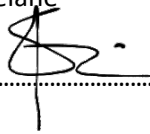
**Project title:** Block AA No. 689

**Date screening report generated:** 29/09/2022 00:49:55

**Applicant:** Lephale Mining PTY LTD

**Compiler:** Ndifelani Oriel Nkabelane

**Compiler signature:**



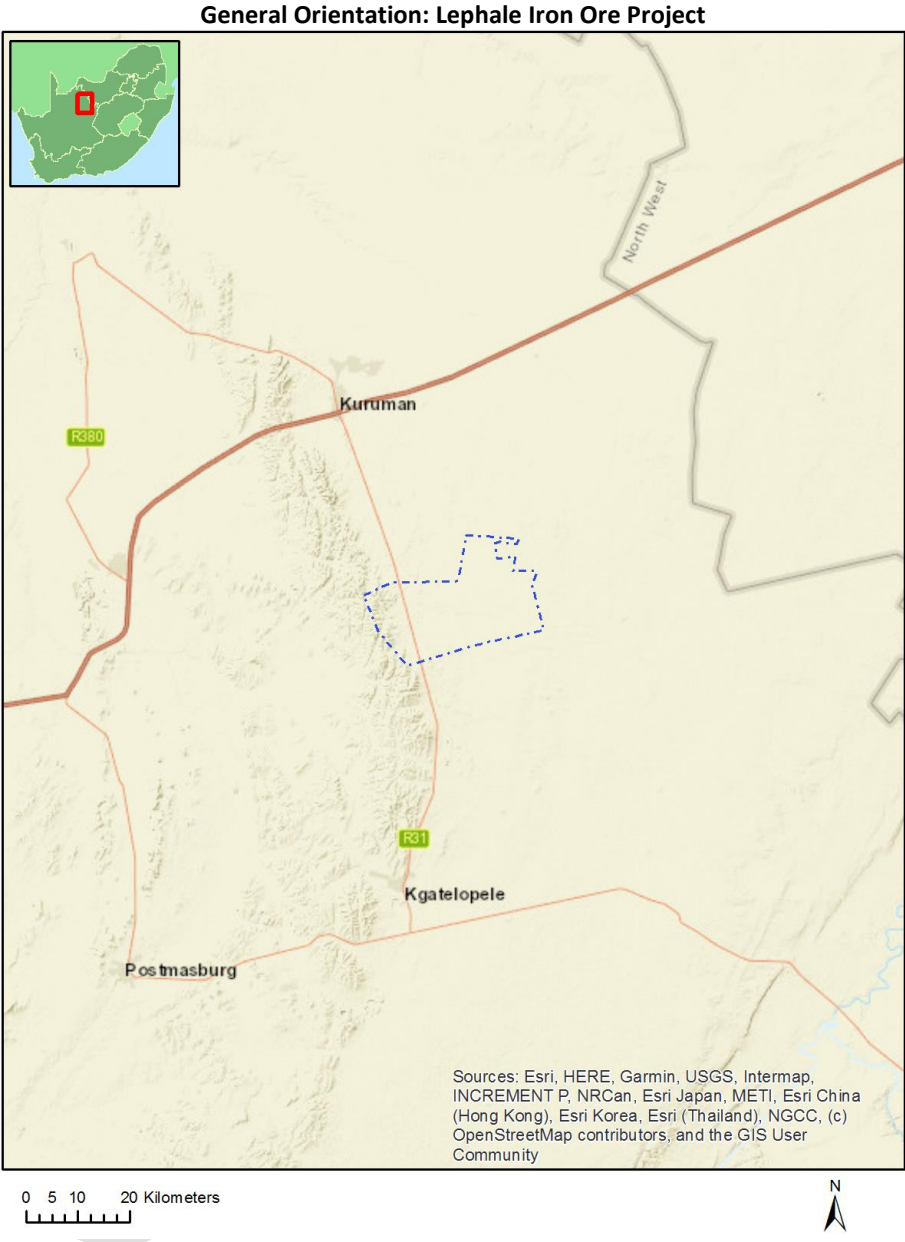
**Application Category:** Mining|Prospecting rights

## Table of Contents

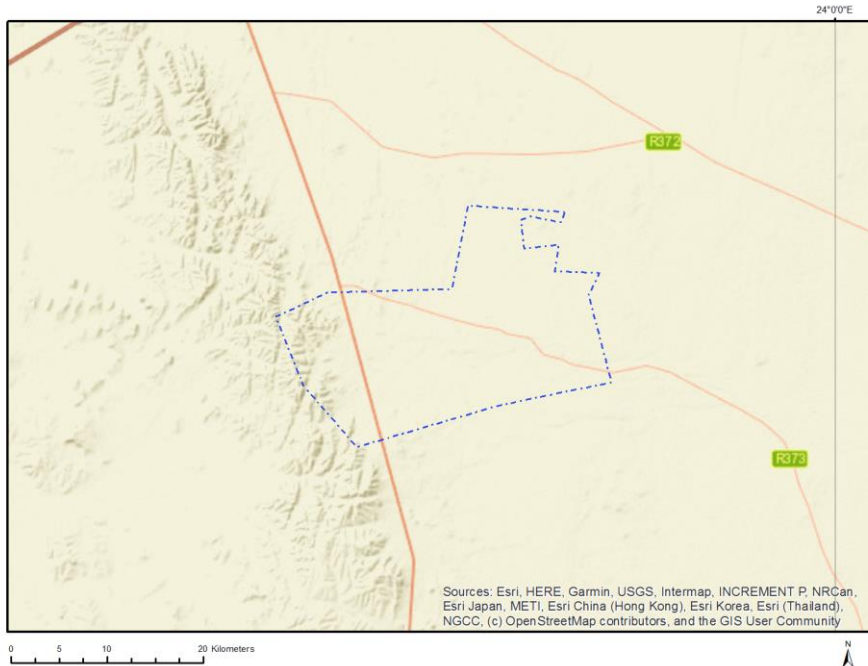
Proposed Project Location .....	3
Orientation map 1: General location .....	3
Map of proposed site and relevant area(s) .....	4
Cadastral details of the proposed site .....	4
Wind and Solar developments with an approved Environmental Authorisation or applications under consideration within 30 km of the proposed area .....	5
Environmental Management Frameworks relevant to the application .....	5
Environmental screening results and assessment outcomes .....	6
Relevant development incentives, restrictions, exclusions or prohibitions .....	6
Map indicating proposed development footprint within applicable development incentive, restriction, exclusion or prohibition zones .....	7
Proposed Development Area Environmental Sensitivity .....	7
Specialist assessments identified .....	8
Results of the environmental sensitivity of the proposed area .....	10
MAP OF RELATIVE AGRICULTURE THEME SENSITIVITY .....	10
MAP OF RELATIVE ANIMAL SPECIES THEME SENSITIVITY .....	11
MAP OF RELATIVE AQUATIC BIODIVERSITY THEME SENSITIVITY .....	12
MAP OF RELATIVE ARCHAEOLOGICAL AND CULTURAL HERITAGE THEME SENSITIVITY .....	13
MAP OF RELATIVE CIVIL AVIATION THEME SENSITIVITY .....	14
MAP OF RELATIVE DEFENCE THEME SENSITIVITY .....	15
MAP OF RELATIVE PALEONTOLOGY THEME SENSITIVITY .....	16
MAP OF RELATIVE PLANT SPECIES THEME SENSITIVITY .....	17
MAP OF RELATIVE TERRESTRIAL BIODIVERSITY THEME SENSITIVITY .....	18

# Proposed Project Location

Orientation map 1: General location



## Map of proposed site and relevant area(s)



## Cadastral details of the proposed site

Property details:

No	Farm Name	Farm/ Erf No	Portion	Latitude	Longitude	Property Type
1	BLOCK A.A.	689	0	27°45'57.03S	23°38'19.86E	Farm
2	BLOCK A.A.	689	18	27°40'39.6S	23°39'55.47E	Farm Portion
3	BLOCK A.A.	689	33	27°44'7.77S	23°37'3.53E	Farm Portion
4	BLOCK A.A.	689	36	27°48'56.25S	23°41'52.55E	Farm Portion
5	BLOCK A.A.	689	55	27°43'2.53S	23°46'39.47E	Farm Portion
6	BLOCK A.A.	689	56	27°47'50.86S	23°45'21.29E	Farm Portion
7	BLOCK A.A.	689	8	27°45'33.28S	23°36'34.26E	Farm Portion
8	BLOCK A.A.	689	11	27°46'25.82S	23°44'59.88E	Farm Portion
9	BLOCK A.A.	689	21	27°50'29.16S	23°34'45.27E	Farm Portion
10	BLOCK A.A.	689	23	27°51'26.52S	23°33'28.88E	Farm Portion
11	BLOCK A.A.	689	50	27°44'37.5S	23°38'49.59E	Farm Portion
12	BLOCK A.A.	689	52	27°48'54.04S	23°40'29.72E	Farm Portion
13	BLOCK A.A.	689	60	27°47'44.52S	23°41'58.26E	Farm Portion
14	BLOCK A.A.	689	62	27°47'56.71S	23°35'57.37E	Farm Portion
15	BLOCK A.A.	689	2	27°49'30S	23°37'9.72E	Farm Portion
16	BLOCK A.A.	689	9	27°48'25.86S	23°39'28.93E	Farm Portion
17	BLOCK A.A.	689	20	27°49'54.65S	23°35'21.58E	Farm Portion
18	BLOCK A.A.	689	31	27°44'50.04S	23°33'24.04E	Farm Portion
19	BLOCK A.A.	689	41	27°42'7.34S	23°43'40.35E	Farm Portion
20	BLOCK A.A.	689	49	27°40'46.98S	23°41'42.34E	Farm Portion
21	BLOCK A.A.	689	54	27°45'56.25S	23°31'35.89E	Farm Portion
22	BLOCK A.A.	689	61	27°42'33.55S	23°41'46.82E	Farm Portion
23	BLOCK A.A.	689	72	27°45'28.67S	23°42'49.28E	Farm Portion
24	BLOCK A.A.	689	12	27°46'39.65S	23°46'42.64E	Farm Portion
25	BLOCK A.A.	689	14	27°44'32S	23°46'1.1E	Farm Portion
26	BLOCK A.A.	689	22	27°50'51.8S	23°34'3.33E	Farm Portion
27	BLOCK A.A.	689	29	27°43'32.21S	23°33'46.49E	Farm Portion
28	BLOCK A.A.	689	43	27°41'13.33S	23°44'4.04E	Farm Portion

29	BLOCK A.A.	689	51	27°47'34.22S	23°40'22.18E	Farm Portion
30	BLOCK A.A.	689	59	27°48'45.05S	23°33'51.55E	Farm Portion
31	BLOCK A.A.	689	53	27°45'27.47S	23°32'31.87E	Farm Portion
32	BLOCK A.A.	689	3	27°50'4.39S	23°32'16.17E	Farm Portion
33	BLOCK A.A.	689	30	27°43'42.5S	23°32'37.47E	Farm Portion
34	BLOCK A.A.	689	32	27°43'36.93S	23°35'44.59E	Farm Portion
35	BLOCK A.A.	689	37	27°47'14.42S	23°41'10.83E	Farm Portion
36	BLOCK A.A.	689	42	27°39'33.64S	23°43'57.01E	Farm Portion
37	BLOCK A.A.	689	71	27°45'16.86S	23°44'49.26E	Farm Portion
38	BLOCK A.A.	689	10	27°47'48.93S	23°43'21.64E	Farm Portion
39	BLOCK A.A.	689	4	27°48'12.82S	23°32'18.89E	Farm Portion
40	BLOCK A.A.	689	6	27°47'29.92S	23°38'4.97E	Farm Portion
41	BLOCK A.A.	689	27	27°45'47.62S	23°35'14.05E	Farm Portion
42	BLOCK A.A.	689	46	27°41'39.86S	23°42'6.1E	Farm Portion
43	BLOCK A.A.	689	48	27°39'49.81S	23°42'6.31E	Farm Portion
44	BLOCK A.A.	689	15	27°43'31.2S	23°43'14.39E	Farm Portion
45	BLOCK A.A.	689	16	27°42'14.18S	23°40'7.15E	Farm Portion
46	BLOCK A.A.	689	34	27°45'58.26S	23°38'19.36E	Farm Portion
47	BLOCK A.A.	689	35	27°43'57.67S	23°35'6.19E	Farm Portion
48	BLOCK A.A.	689	57	27°45'20.46S	23°41'11.6E	Farm Portion
49	BLOCK A.A.	689	58	27°43'10.03S	23°45'24.16E	Farm Portion
50	BLOCK A.A.	689	13	27°44'37.07S	23°40'42.16E	Farm Portion
51	BLOCK A.A.	689	5	27°46'45.74S	23°30'23.33E	Farm Portion
52	BLOCK A.A.	689	7	27°45'56.98S	23°34'5.76E	Farm Portion
53	BLOCK A.A.	689	26	27°47'17.38S	23°31'54.02E	Farm Portion
54	BLOCK A.A.	689	28	27°44'37.24S	23°34'31.49E	Farm Portion
55	BLOCK A.A.	689	45	27°44'38.3S	23°30'21.34E	Farm Portion
56	BLOCK A.A.	689	47	27°39'25.75S	23°40'16.53E	Farm Portion
57	BLOCK A.A.	689	63	27°46'54.75S	23°35'35.98E	Farm Portion
58	BLOCK A.A.	689	65	27°43'25.91S	23°41'27.97E	Farm Portion

Development footprint<sup>1</sup> vertices:  
No development footprint(s) specified.

## Wind and Solar developments with an approved Environmental Authorisation or applications under consideration within 30 km of the proposed area

No nearby wind or solar developments found.

## Environmental Management Frameworks relevant to the application

No intersections with EMF areas found.

<sup>1</sup> “development footprint”, means the area within the site on which the development will take place and includes all ancillary developments for example roads, power lines, boundary walls, paving etc. which require vegetation clearance or which will be disturbed and for which the application has been submitted.

## Environmental screening results and assessment outcomes

The following sections contain a summary of any development incentives, restrictions, exclusions or prohibitions that apply to the proposed development site as well as the most environmental sensitive features on the site based on the site sensitivity screening results for the application classification that was selected. The application classification selected for this report is:

**Mining | Prospecting rights.**

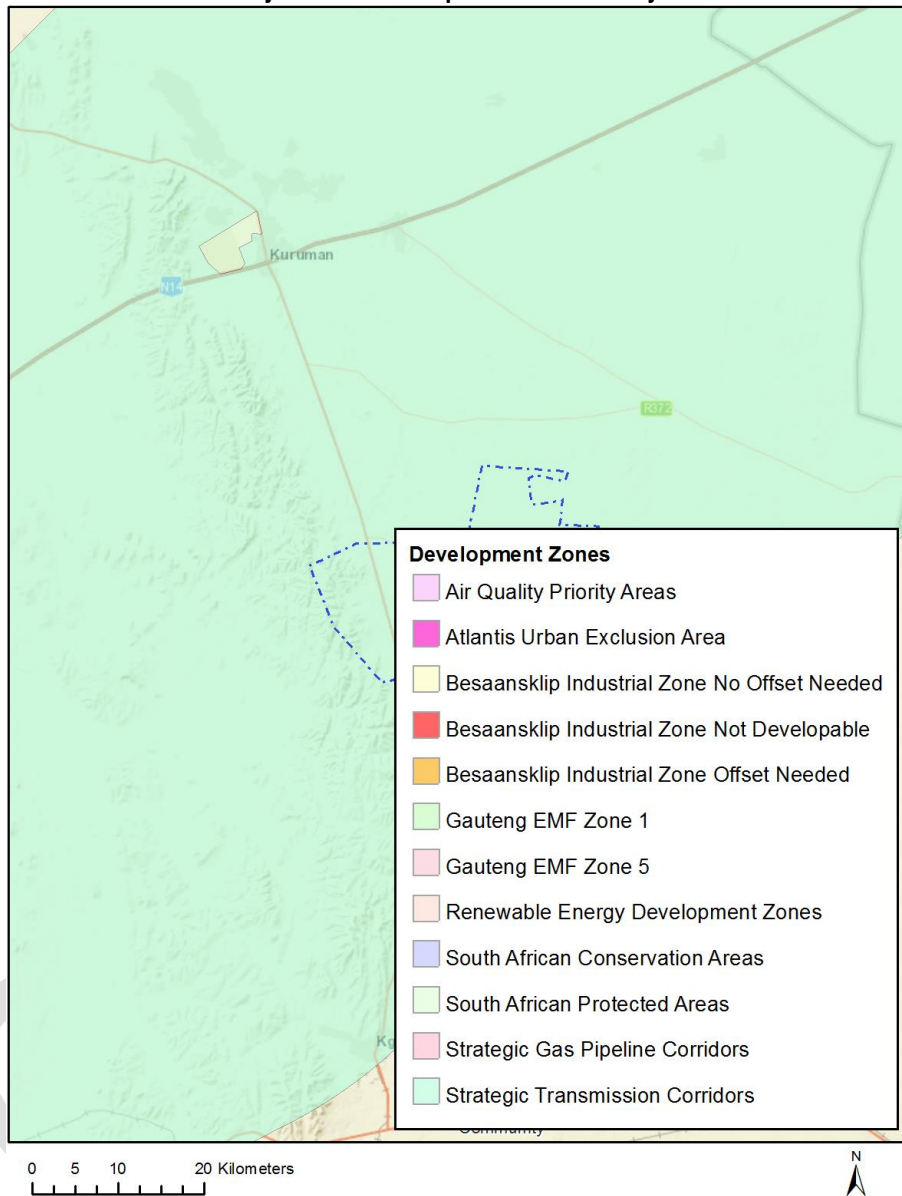
### Relevant development incentives, restrictions, exclusions or prohibitions

The following development incentives, restrictions, exclusions or prohibitions and their implications that apply to this site are indicated below.

Incentive , restriction or prohibition	Implication
Strategic Transmission Corridor-Northern corridor	<a href="https://screening.environment.gov.za/ScreeningDownloads/DevelopmentZones/Combined_EGI.pdf">https://screening.environment.gov.za/ScreeningDownloads/DevelopmentZones/Combined_EGI.pdf</a>

Map indicating proposed development footprint within applicable development incentive, restriction, exclusion or prohibition zones

**Project Location: Lephale Iron Ore Project**



**Proposed Development Area Environmental Sensitivity**

The following summary of the development site environmental sensitivities is identified. Only the highest environmental sensitivity is indicated. The footprint environmental sensitivities for the proposed development footprint as identified, are indicative only and must be verified on site by a suitably qualified person before the specialist assessments identified below can be confirmed.

Theme	Very High sensitivity	High sensitivity	Medium sensitivity	Low sensitivity
Agriculture Theme			X	
Animal Species Theme		X		

Aquatic Biodiversity Theme	X			
Archaeological and Cultural Heritage Theme	X			
Civil Aviation Theme		X		
Defence Theme				X
Paleontology Theme	X			
Plant Species Theme			X	
Terrestrial Biodiversity Theme	X			

### Specialist assessments identified

Based on the selected classification, and the environmental sensitivities of the proposed development footprint, the following list of specialist assessments have been identified for inclusion in the assessment report. It is the responsibility of the EAP to confirm this list and to motivate in the assessment report, the reason for not including any of the identified specialist study including the provision of photographic evidence of the site situation.

<b>N o</b>	<b>Specialist assessment</b>	<b>Assessment Protocol</b>
1	Agricultural Impact Assessment	<a href="https://screening.environment.gov.za/ScreeningDownloads/AssessmentProtocols/Gazetted_General_Agriculture_Assessment_Protocols.pdf">https://screening.environment.gov.za/ScreeningDownloads/AssessmentProtocols/Gazetted_General_Agriculture_Assessment_Protocols.pdf</a>
2	Archaeological and Cultural Heritage Impact Assessment	<a href="https://screening.environment.gov.za/ScreeningDownloads/AssessmentProtocols/Gazetted_General_Requirement_Assessment_Protocols.pdf">https://screening.environment.gov.za/ScreeningDownloads/AssessmentProtocols/Gazetted_General_Requirement_Assessment_Protocols.pdf</a>
3	Palaeontology Impact Assessment	<a href="https://screening.environment.gov.za/ScreeningDownloads/AssessmentProtocols/Gazetted_General_Requirement_Assessment_Protocols.pdf">https://screening.environment.gov.za/ScreeningDownloads/AssessmentProtocols/Gazetted_General_Requirement_Assessment_Protocols.pdf</a>
4	Terrestrial Biodiversity Impact Assessment	<a href="https://screening.environment.gov.za/ScreeningDownloads/AssessmentProtocols/Gazetted_Terrestrial_Biodiversity_Assessment_Protocols.pdf">https://screening.environment.gov.za/ScreeningDownloads/AssessmentProtocols/Gazetted_Terrestrial_Biodiversity_Assessment_Protocols.pdf</a>
5	Aquatic Biodiversity Impact Assessment	<a href="https://screening.environment.gov.za/ScreeningDownloads/AssessmentProtocols/Gazetted_Aquatic_Biodiversity_Assessment_Protocols.pdf">https://screening.environment.gov.za/ScreeningDownloads/AssessmentProtocols/Gazetted_Aquatic_Biodiversity_Assessment_Protocols.pdf</a>
6	Noise Impact Assessment	<a href="https://screening.environment.gov.za/ScreeningDownloads/AssessmentProtocols/Gazetted_Noise_Impacts_Assessment_Protocol.pdf">https://screening.environment.gov.za/ScreeningDownloads/AssessmentProtocols/Gazetted_Noise_Impacts_Assessment_Protocol.pdf</a>



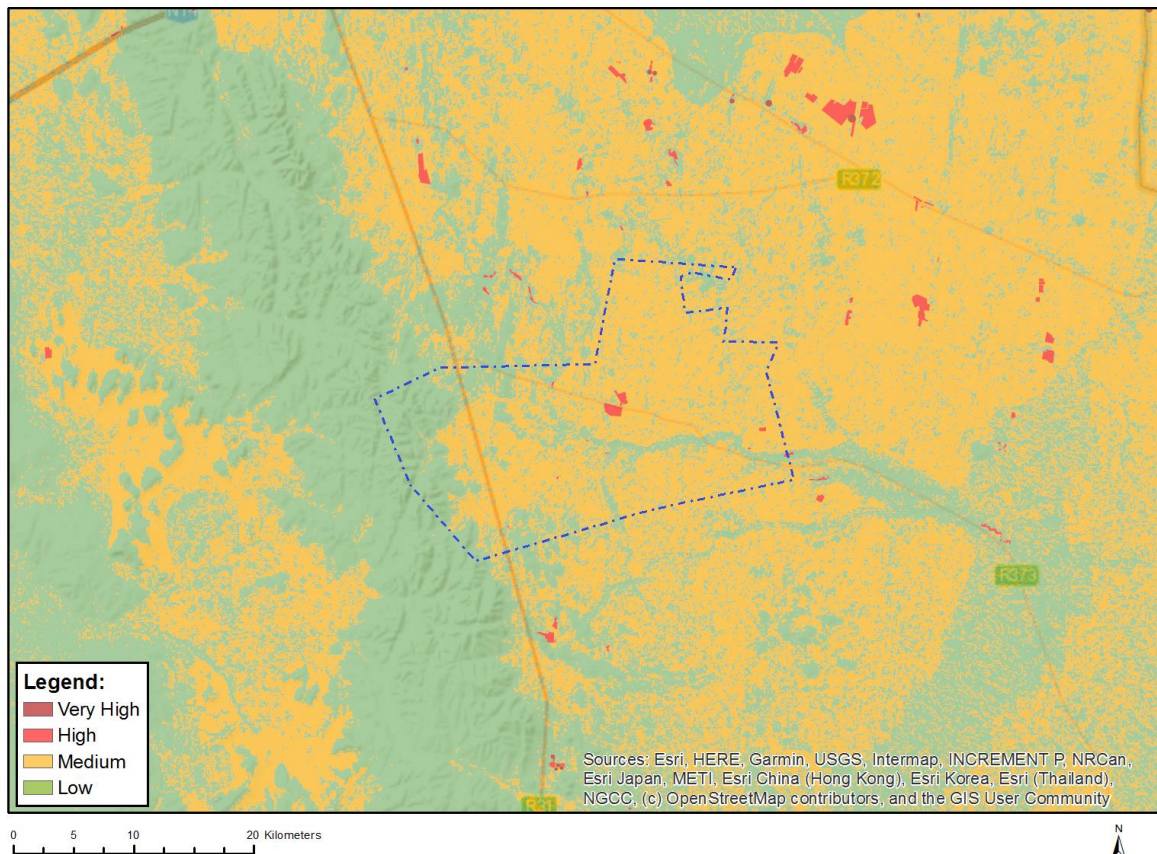
	ment	
7	Radioactivity Impact Assessment	<a href="https://screening.environment.gov.za/ScreeningDownloads/AssessmentProtocols/Gazetted_General_Requirement_Assessment_Protocols.pdf">https://screening.environment.gov.za/ScreeningDownloads/AssessmentProtocols/Gazetted_General_Requirement_Assessment_Protocols.pdf</a>
8	Plant Species Assessment	<a href="https://screening.environment.gov.za/ScreeningDownloads/AssessmentProtocols/Gazetted_Plant_Species_Assessment_Protocols.pdf">https://screening.environment.gov.za/ScreeningDownloads/AssessmentProtocols/Gazetted_Plant_Species_Assessment_Protocols.pdf</a>
9	Animal Species Assessment	<a href="https://screening.environment.gov.za/ScreeningDownloads/AssessmentProtocols/Gazetted_Animal_Species_Assessment_Protocols.pdf">https://screening.environment.gov.za/ScreeningDownloads/AssessmentProtocols/Gazetted_Animal_Species_Assessment_Protocols.pdf</a>

OFFICIAL

## Results of the environmental sensitivity of the proposed area.

The following section represents the results of the screening for environmental sensitivity of the proposed site for relevant environmental themes associated with the project classification. It is the duty of the EAP to ensure that the environmental themes provided by the screening tool are comprehensive and complete for the project. Refer to the disclaimer.

### MAP OF RELATIVE AGRICULTURE THEME SENSITIVITY

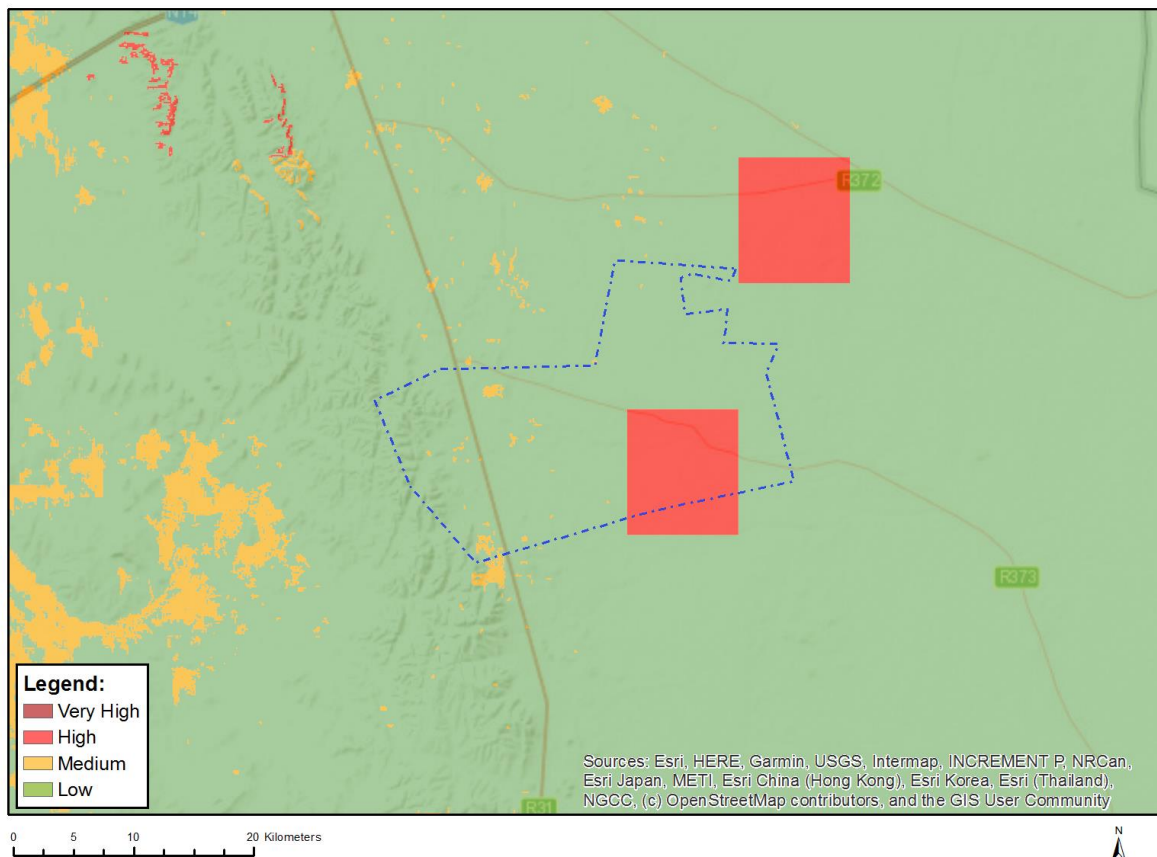


Very High sensitivity	High sensitivity	Medium sensitivity	Low sensitivity
		X	

#### Sensitivity Features:

Sensitivity	Feature(s)
Low	Land capability;01. Very low/02. Very low/03. Low-Very low/04. Low-Very low/05. Low
Medium	Land capability;06. Low-Moderate/07. Low-Moderate/08. Moderate

## MAP OF RELATIVE ANIMAL SPECIES THEME SENSITIVITY



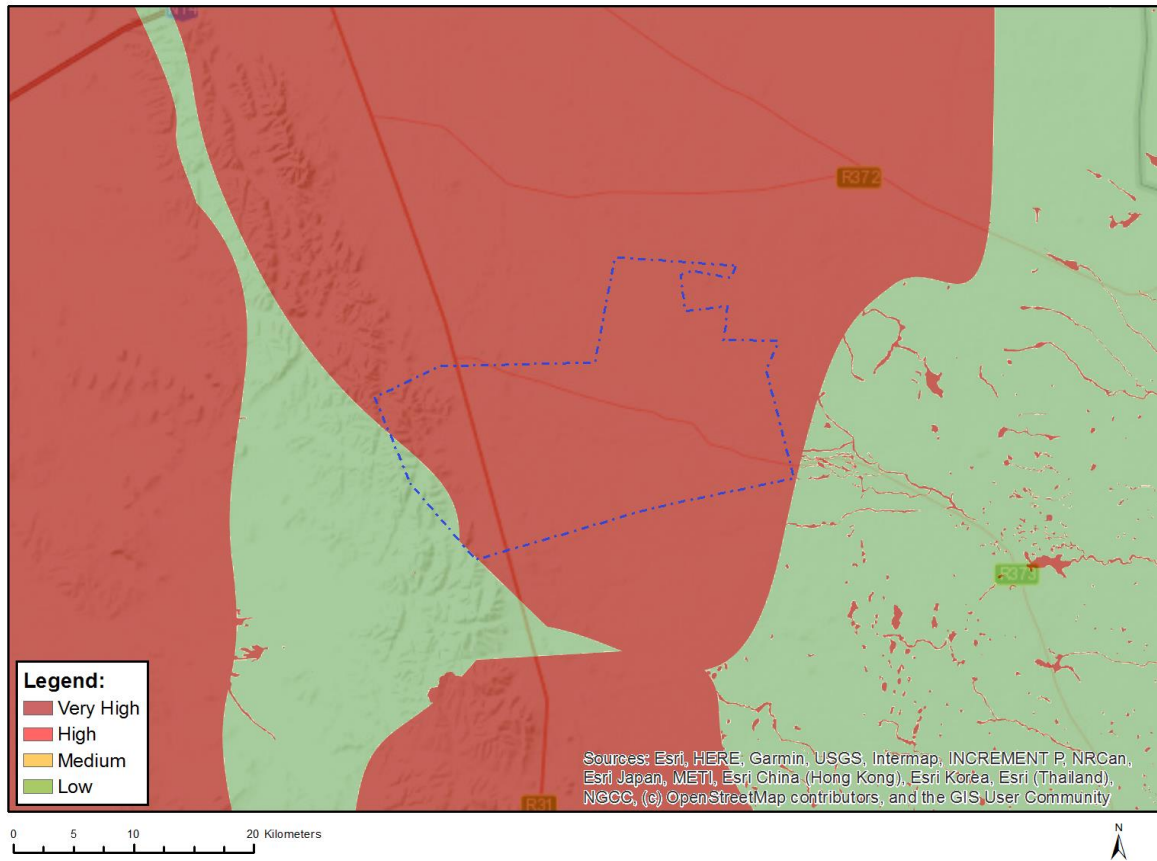
Where only a sensitive plant unique number or sensitive animal unique number is provided in the screening report and an assessment is required, the environmental assessment practitioner (EAP) or specialist is required to email SANBI at [eiadatarequests@sanbi.org.za](mailto:eiadatarequests@sanbi.org.za) listing all sensitive species with their unique identifiers for which information is required. The name has been withheld as the species may be prone to illegal harvesting and must be protected. SANBI will release the actual species name after the details of the EAP or specialist have been documented.

Very High sensitivity	High sensitivity	Medium sensitivity	Low sensitivity
	X		

### Sensitivity Features:

Sensitivity	Feature(s)
High	Aves-Cursorius rufus
Low	Subject to confirmation
Medium	Aves-Sagittarius serpentarius

## MAP OF RELATIVE AQUATIC BIODIVERSITY THEME SENSITIVITY

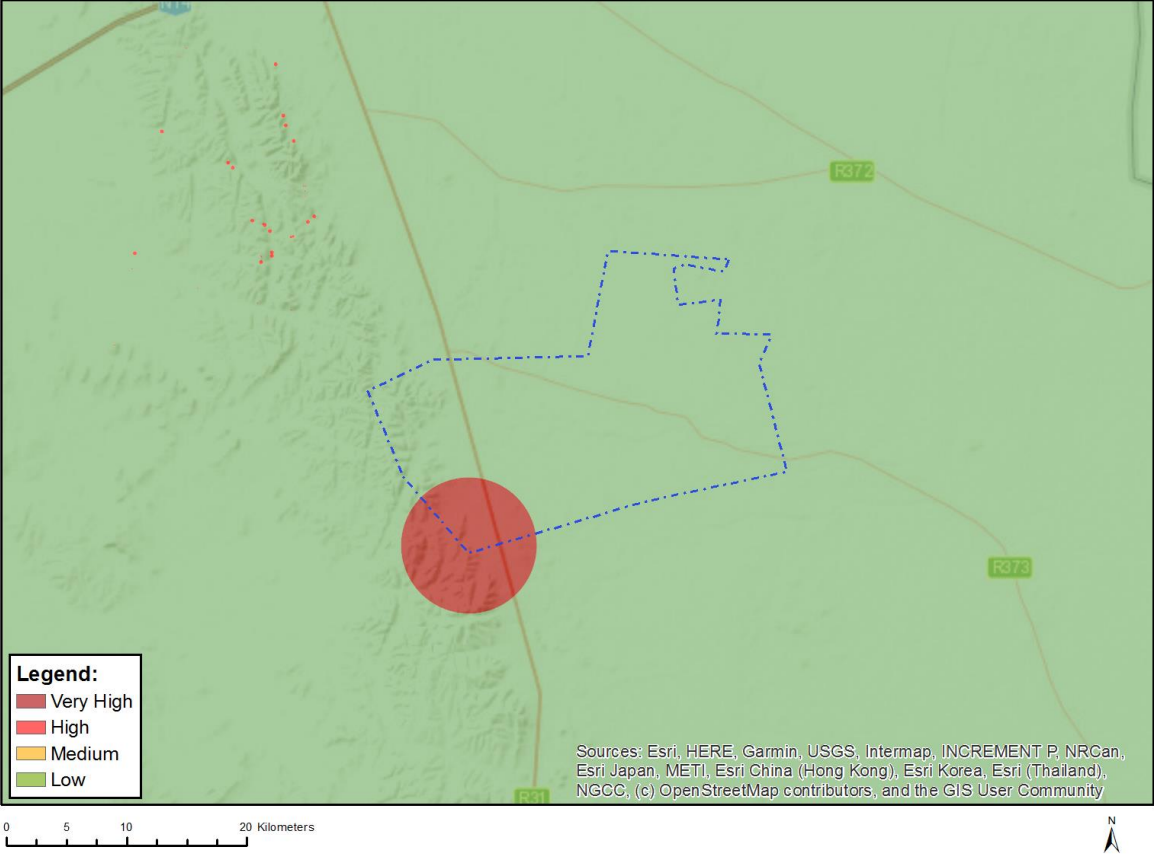


Very High sensitivity	High sensitivity	Medium sensitivity	Low sensitivity
X			

### Sensitivity Features:

Sensitivity	Feature(s)
Low	Low sensitivity
Very High	Strategic water source area
Very High	Wetlands and Estuaries

# MAP OF RELATIVE ARCHAEOLOGICAL AND CULTURAL HERITAGE THEME SENSITIVITY



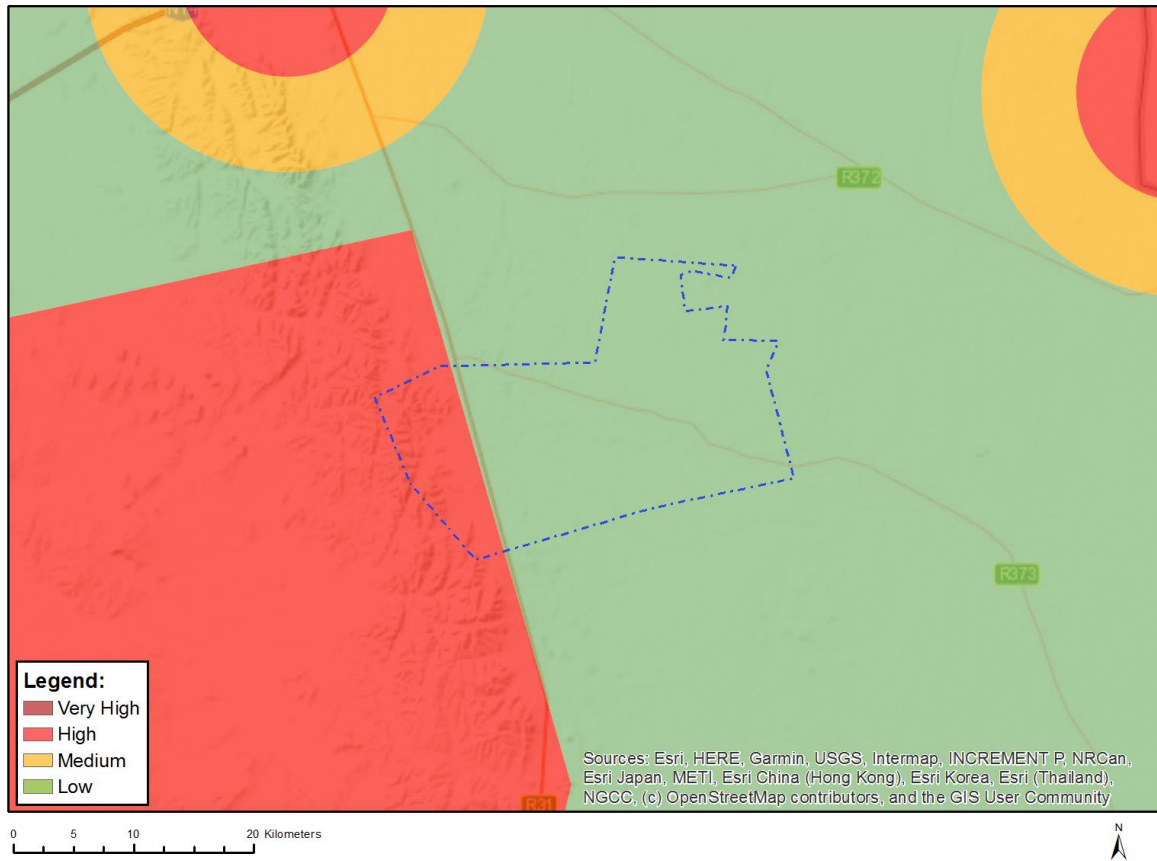
Very High sensitivity	High sensitivity	Medium sensitivity	Low sensitivity
X			

**Sensitivity Features:**

Sensitivity	Feature(s)
Low	Low sensitivity
Very High	Within 5km of a Grade I Heritage site



## MAP OF RELATIVE CIVIL AVIATION THEME SENSITIVITY

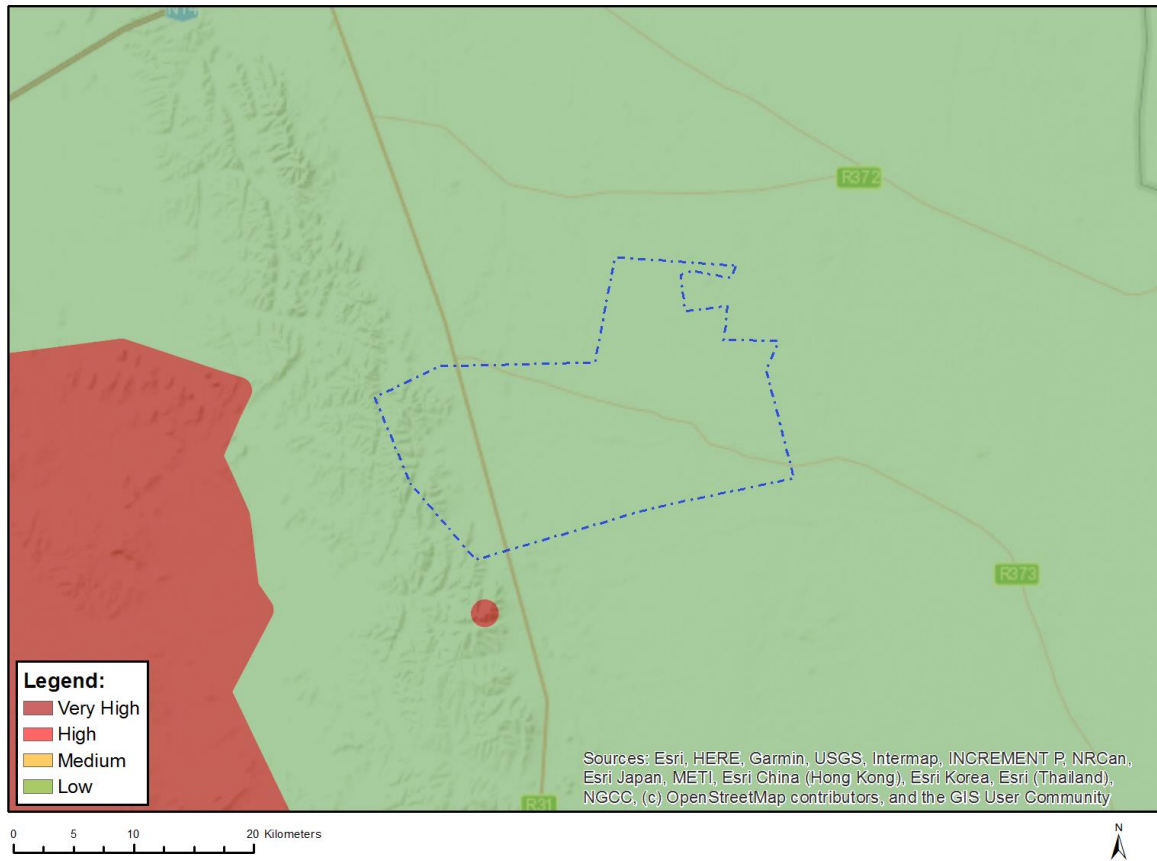


Very High sensitivity	High sensitivity	Medium sensitivity	Low sensitivity
	X		

### Sensitivity Features:

Sensitivity	Feature(s)
High	Dangerous and restricted airspace as demarcated
Low	Low sensitivity

## MAP OF RELATIVE DEFENCE THEME SENSITIVITY

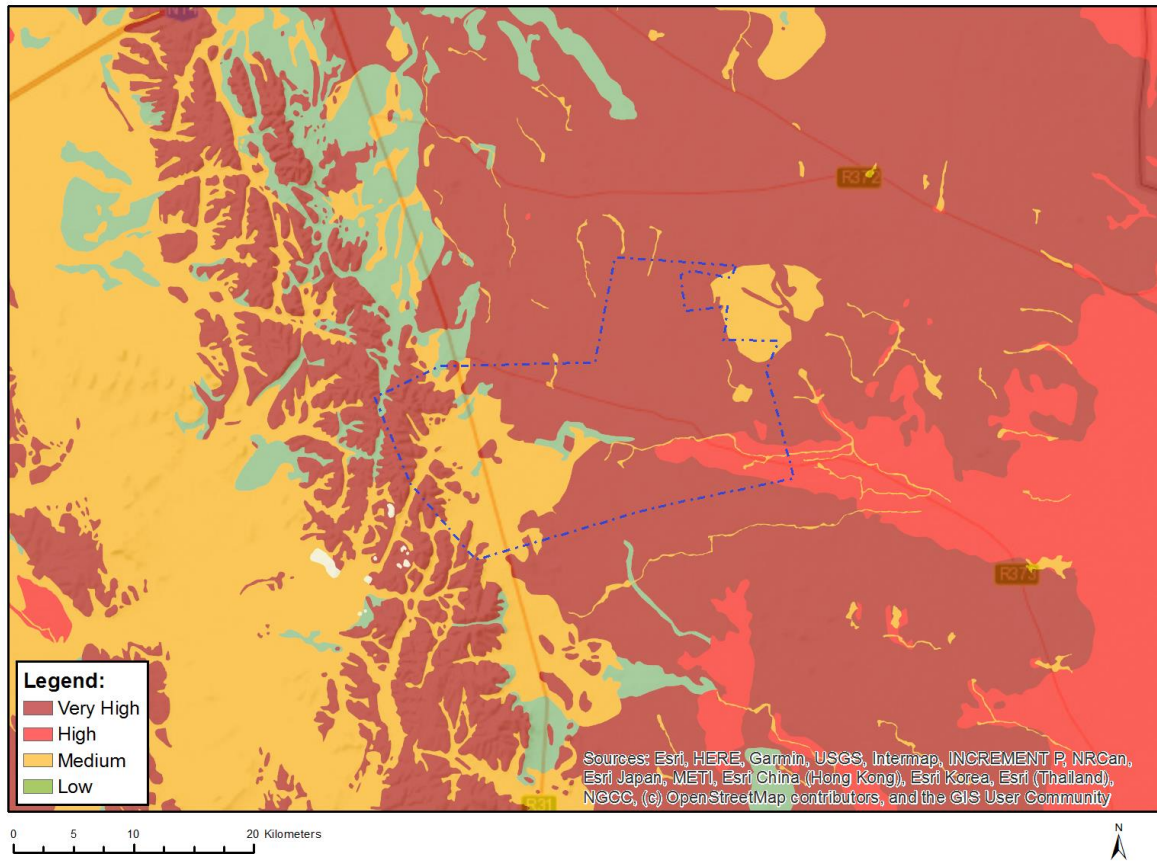


Very High sensitivity	High sensitivity	Medium sensitivity	Low sensitivity
			X

### Sensitivity Features:

Sensitivity	Feature(s)
Low	Low Sensitivity

## MAP OF RELATIVE PALEONTOLOGY THEME SENSITIVITY



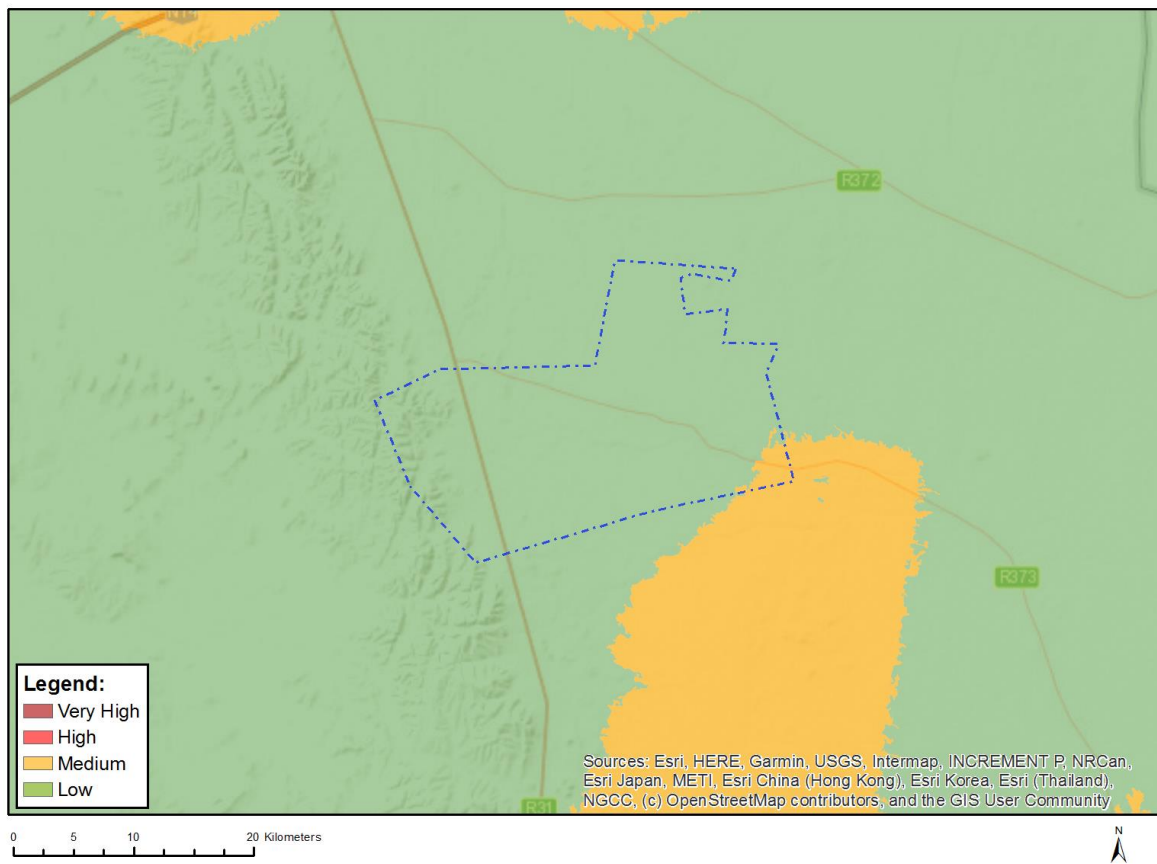
Very High sensitivity	High sensitivity	Medium sensitivity	Low sensitivity
X			

### Sensitivity Features:

Sensitivity	Feature(s)
High	Features with a High paleontological sensitivity
Low	Features with a Low paleontological sensitivity
Medium	Features with a Medium paleontological sensitivity
Very High	Features with a Very High paleontological sensitivity



## MAP OF RELATIVE PLANT SPECIES THEME SENSITIVITY



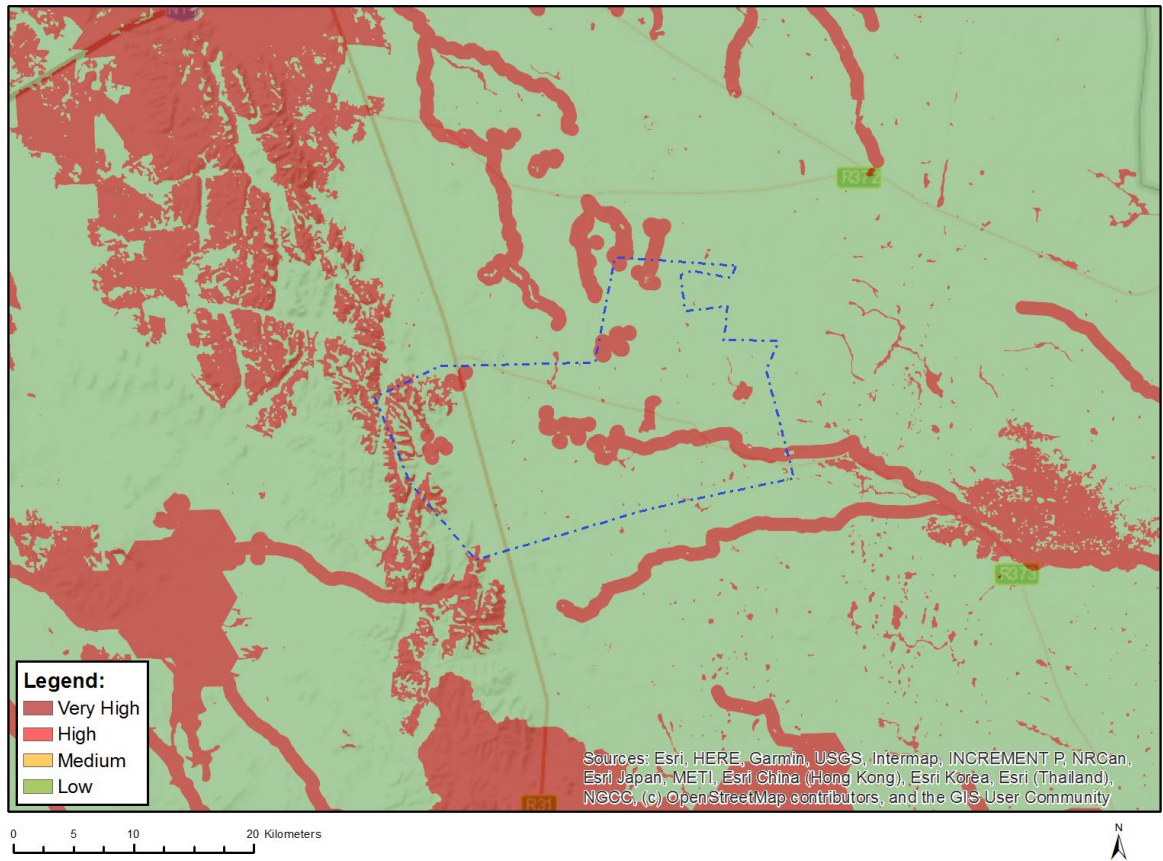
Where only a sensitive plant unique number or sensitive animal unique number is provided in the screening report and an assessment is required, the environmental assessment practitioner (EAP) or specialist is required to email SANBI at [eiadatarequests@sanbi.org.za](mailto:eiadatarequests@sanbi.org.za) listing all sensitive species with their unique identifiers for which information is required. The name has been withheld as the species may be prone to illegal harvesting and must be protected. SANBI will release the actual species name after the details of the EAP or specialist have been documented.

Very High sensitivity	High sensitivity	Medium sensitivity	Low sensitivity
		X	

### Sensitivity Features:

Sensitivity	Feature(s)
Low	Low Sensitivity
Medium	Antimima lawsonii

## MAP OF RELATIVE TERRESTRIAL BIODIVERSITY THEME SENSITIVITY



Very High sensitivity	High sensitivity	Medium sensitivity	Low sensitivity
X			

### Sensitivity Features:

Sensitivity	Feature(s)
Low	Low Sensitivity
Very High	Critical biodiversity area 1
Very High	Critical biodiversity area 2
Very High	Ecological support area