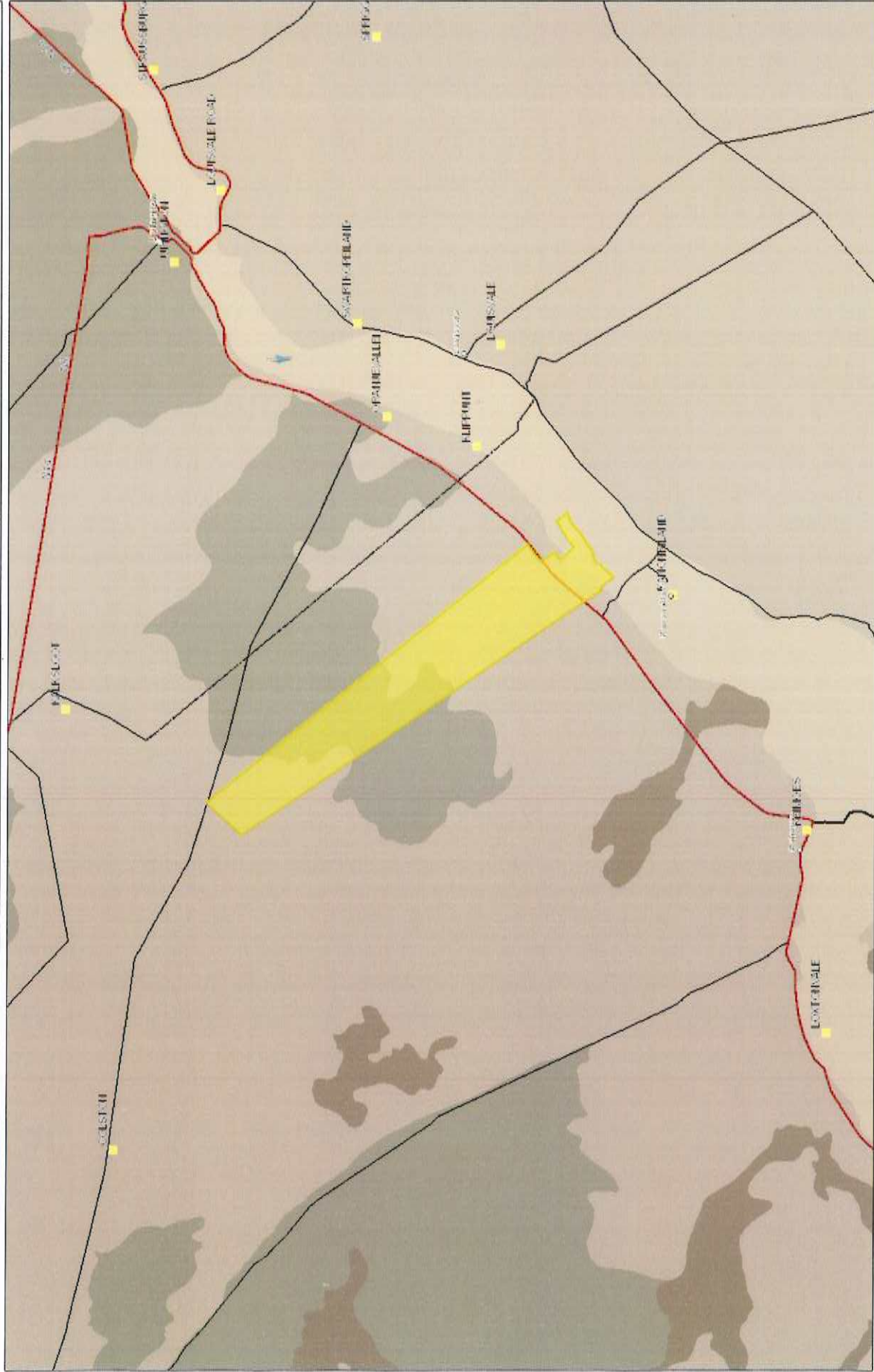


# RE Capital 3 Soils



**Legend**

**World Boundaries and Places**

- Towns
- Local municipalities
- National roads
- Secondary roads
- ARTERIAL ROUTE
- MAIN ROAD
- SECONDARY ROAD

**Soil Classes**

- Associations of Classes 1 to 4: Ured soils
- Associations of Classes 13 and 16: 1 soils and land classes
- Association of Classes 17 and 18: 2 soils
- Association of Classes 17 and 20: 1 contrast soils
- Association of Classes 17 and 21: 1 contrast soils
- Association of Classes 17 and 21: 1 soils and land classes
- Association of Classes 17 and 21: 1 position
- Association of Classes 5, 6, 10, 11, 12, 13, 14, 15, 16, 17, 18, 19, 20, 21, 22, 23, 24, 25, 26, 27, 28, 29, 30, 31, 32, 33, 34, 35, 36, 37, 38, 39, 40, 41, 42, 43, 44, 45, 46, 47, 48, 49, 50, 51, 52, 53, 54, 55, 56, 57, 58, 59, 60, 61, 62, 63, 64, 65, 66, 67, 68, 69, 70, 71, 72, 73, 74, 75, 76, 77, 78, 79, 80, 81, 82, 83, 84, 85, 86, 87, 88, 89, 90, 91, 92, 93, 94, 95, 96, 97, 98, 99, 100

**Soil Classes**

- Dark clay soils, other shallow, chiti
- Dark clay soils, other shallow, chiti
- Freshly drained, structureless soils
- Impurely drained sandy soils
- Impurely drained soils, other shallow, plastic horizon
- Lithomorphous soils on hard or very hard parent material
- Moisture stress
- Non soil land classes
- Podzols
- Poorly drained swelling clay soils
- Red or yellow structureless soils with a podzolic horizon
- Soils with a podzolic horizon
- Soils with a humic topsoil horizon
- Swelling clay soils
- Texture contrast soils often poorly drained
- Water bodies
- Wetland soils

**General Soils**

- <all other values>

1:191 341

Notes  
Soils

This map is a user generated static output from an internet mapping site and is for reference only. Data layers that appear on this map may or may not be accurate, current, or otherwise reliable.

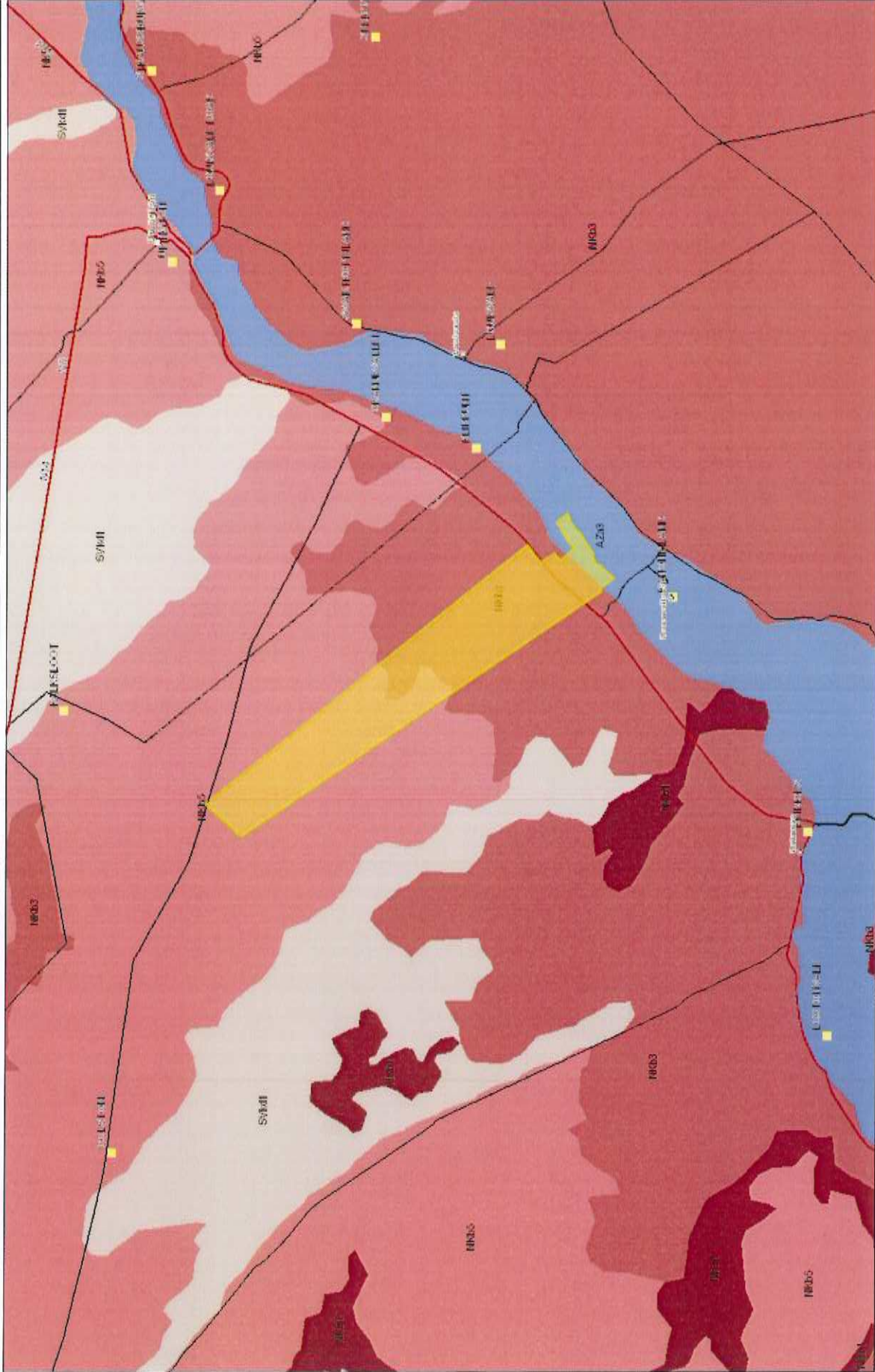
THIS MAP IS NOT TO BE USED FOR NAVIGATION.

9.7 0 4.86 9.7 Kilometers

WGS\_1984\_Web\_Mercator\_Auxiliary\_Sphere  
© Lantide Geographics Group Ltd.



**RE Capital 3 Veg**



9.7  
0 4.35 9.7 Kilometers

WCS\_1984\_Web\_Mercator\_Auxiliary\_Sphere  
© Latitude Geographics Group Ltd.

This map is a user generated static output from an Internet mapping site and is for reference only. Data layers that appear on this map may, or may not be accurate, current, or otherwise reliable.

**THIS MAP IS NOT TO BE USED FOR NAVIGATION**



**Legend**

**World Boundaries and Places**

- Towns
- Local municipalities
- National roads
- Secondary roads
- ARTERIAL ROUTE
- MAIN ROAD
- SECONDARY ROAD

**Vegetation map 2006**

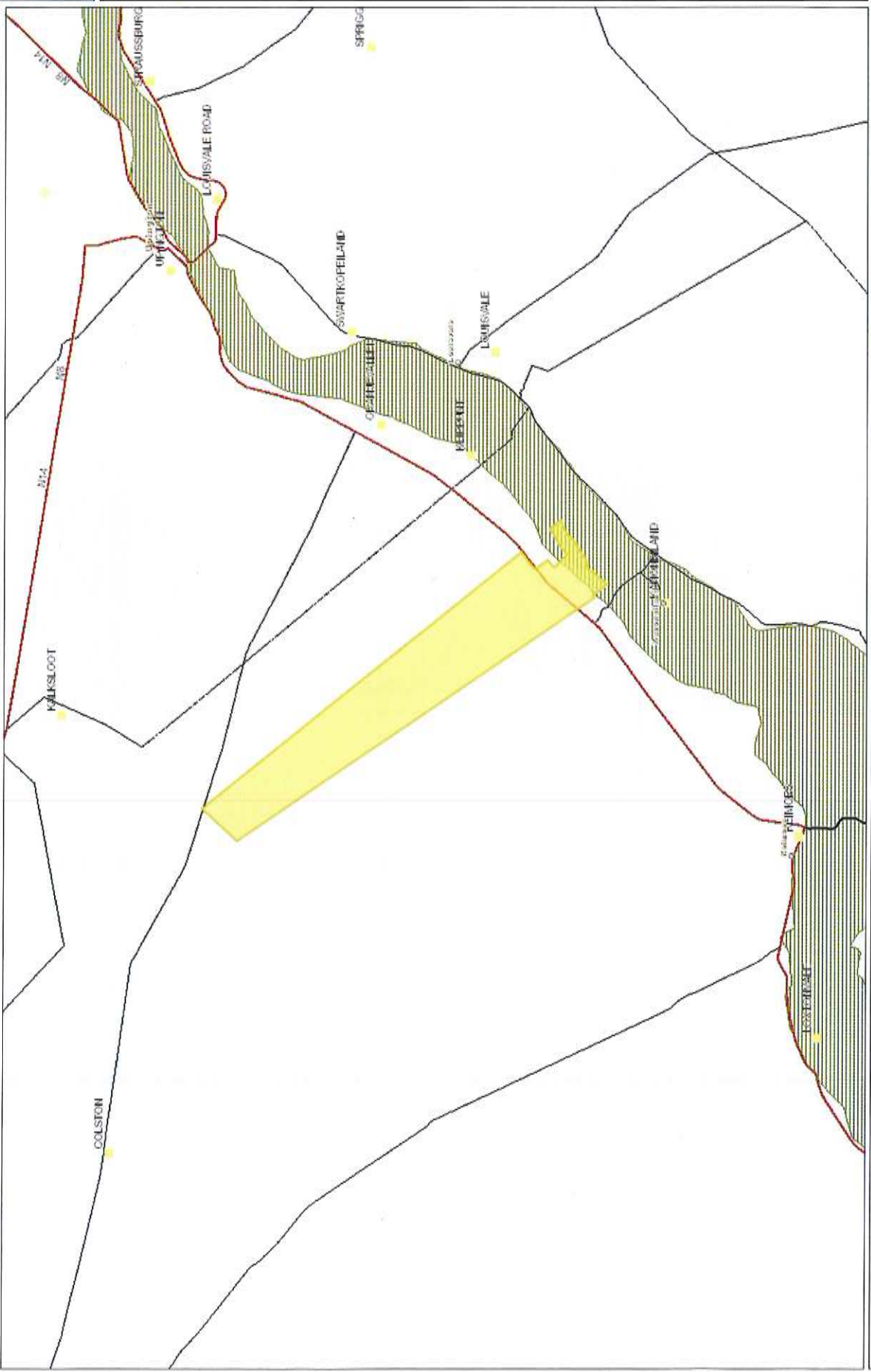
- FFs 1 Bodeveld Sandstone Fynbos
- FFs 2 Graauwvlei Sandstone Fynbos
- FFs 3 Oribiza Sandstone Fynbos
- FFs 4 Oelboring Sandstone Fynbos
- FFs 5 Wiersteek Sandstone Fynbos
- FFs 6 Ploegberg Sandstone Fynbos
- FFs 7 North Heer Sandstone Fynbos
- FFs 8 South Heer Sandstone Fynbos
- FFs 9 Pearsval Sandstone Fynbos
- FFs 10 Haverhoek Sandstone Fynbos
- FFs 11 Kogelberg Sandstone Fynbos
- FFs 12 Oerberg Sandstone Fynbos
- FFs 13 North Smeetsdorp Sandstone Fynbos
- FFs 14 South Smeetsdorp Sandstone Fynbos
- FFs 15 North Langsburg Sandstone Fynbos
- FFs 16 South Langsburg Sandstone Fynbos
- FFs 17 Ploegberg Sandstone Fynbos
- FFs 18 North Ourekaya Sandstone Fynbos
- FFs 19 South Ourekaya Sandstone Fynbos
- FFs 20 Tabaakama Sandstone Fynbos
- FFs 21 North Rooiberg Sandstone Fynbos
- FFs 22 South Rooiberg Sandstone Fynbos
- FFs 23 North Swartberg Sandstone Fynbos
- FFs 24 South Swartberg Sandstone Fynbos
- FFs 25 North Kammarskloof Sandstone Fynbos
- FFs 26 South Kammarskloof Sandstone Fynbos
- FFs 27 Kogala Sandstone Fynbos
- FFs 28 Kogala Grassy Sandstone Fynbos
- FFs 29 Algoa Sandstone Fynbos
- FFs 30 Western Almonde Sandstone Fynbos
- FFs 31 Swartberg Almonde Sandstone Fynbos
- FFs 1 Sterkfontein Quartzite Fynbos
- FFs 2 Swartfontein Quartzite Fynbos

1:191 341

**Notes**

Vegetation

# RE Capital 3 CBA



**Legend**

- World Boundaries and Places
  - Towns
  - Local municipalities
- National roads
  - Secondary roads
  - ARTERIAL ROUTE
  - MAIN ROAD
  - SECONDARY ROAD
- CBA aquatic
  - CBA aquatic (type 1)
  - CBA aquatic (type 2)
- Ecological Support Areas aquatic
  - CBA terrestrial (type 1)
  - CBA terrestrial (type 2)
- CBA terrestrial
  - Ecological Support Areas terrestrial

1:191 341

**Notes**  
CBA

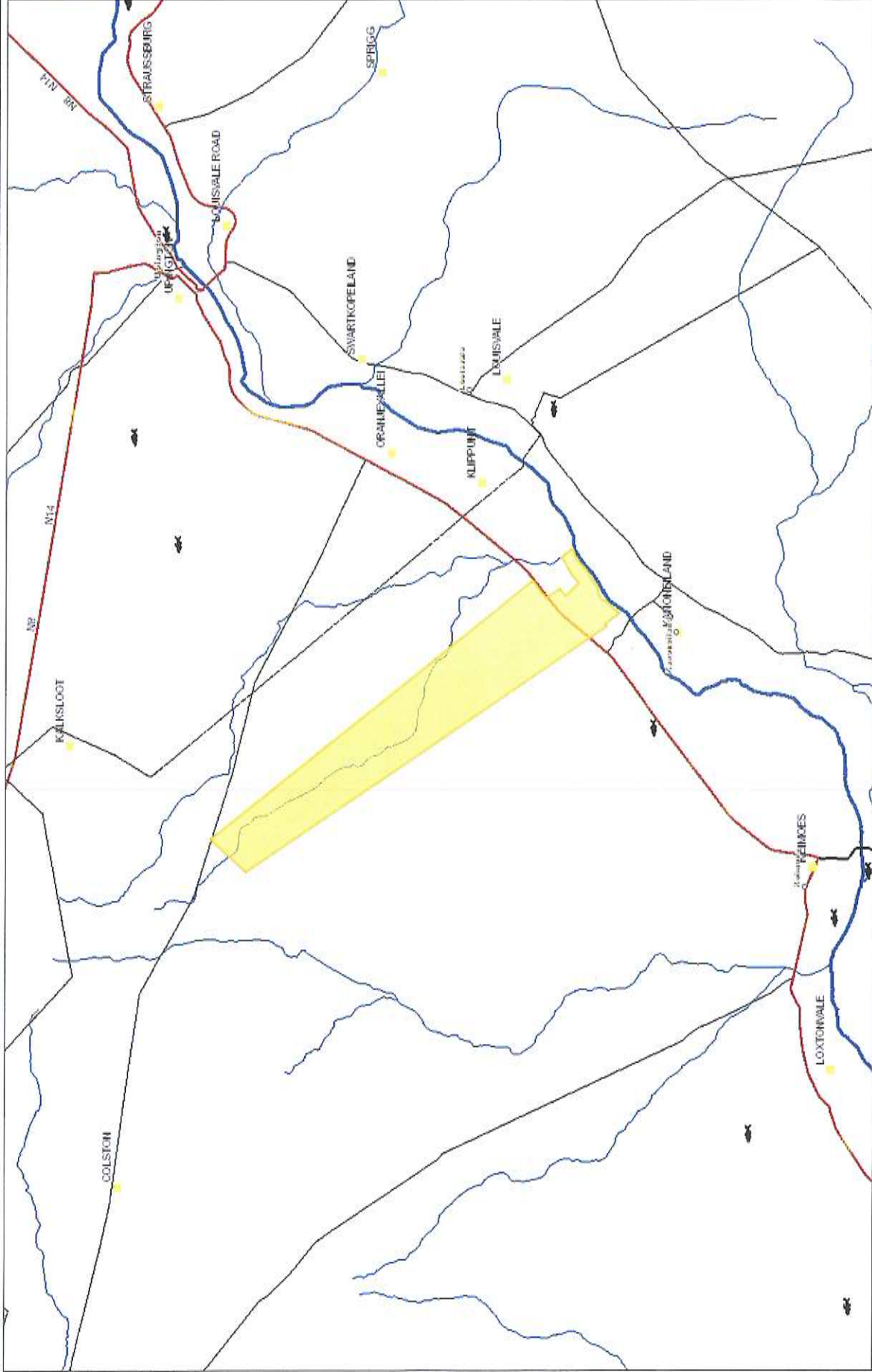
This map is a user-generated static output from an internet mapping site and is for reference only. Data layers that appear on this map may or may not be accurate, current, or otherwise reliable.  
**THIS MAP IS NOT TO BE USED FOR NAVIGATION**

0 4.86 9.7 Kilometers

WGS\_1984\_Web\_Mercator\_Auxiliary\_Sphere  
© Latitude Geographics Group Ltd.



# RE Capital 3 NFEPA



**Legend**

**World Boundaries and Places**

- Towns
- Local municipalities
- National roads
- Secondary roads
- ARTERIAL ROUTE
- MAIN ROAD
- SECONDARY ROAD
- Water management areas
- Sub water management areas
- Fish points
- Fish sanctuary: CPREB fish
- Fish sanctuary: other fish
- Wetlands cluster
- NFEPA rivers
- 1
- 5
- 10

1: 191 341

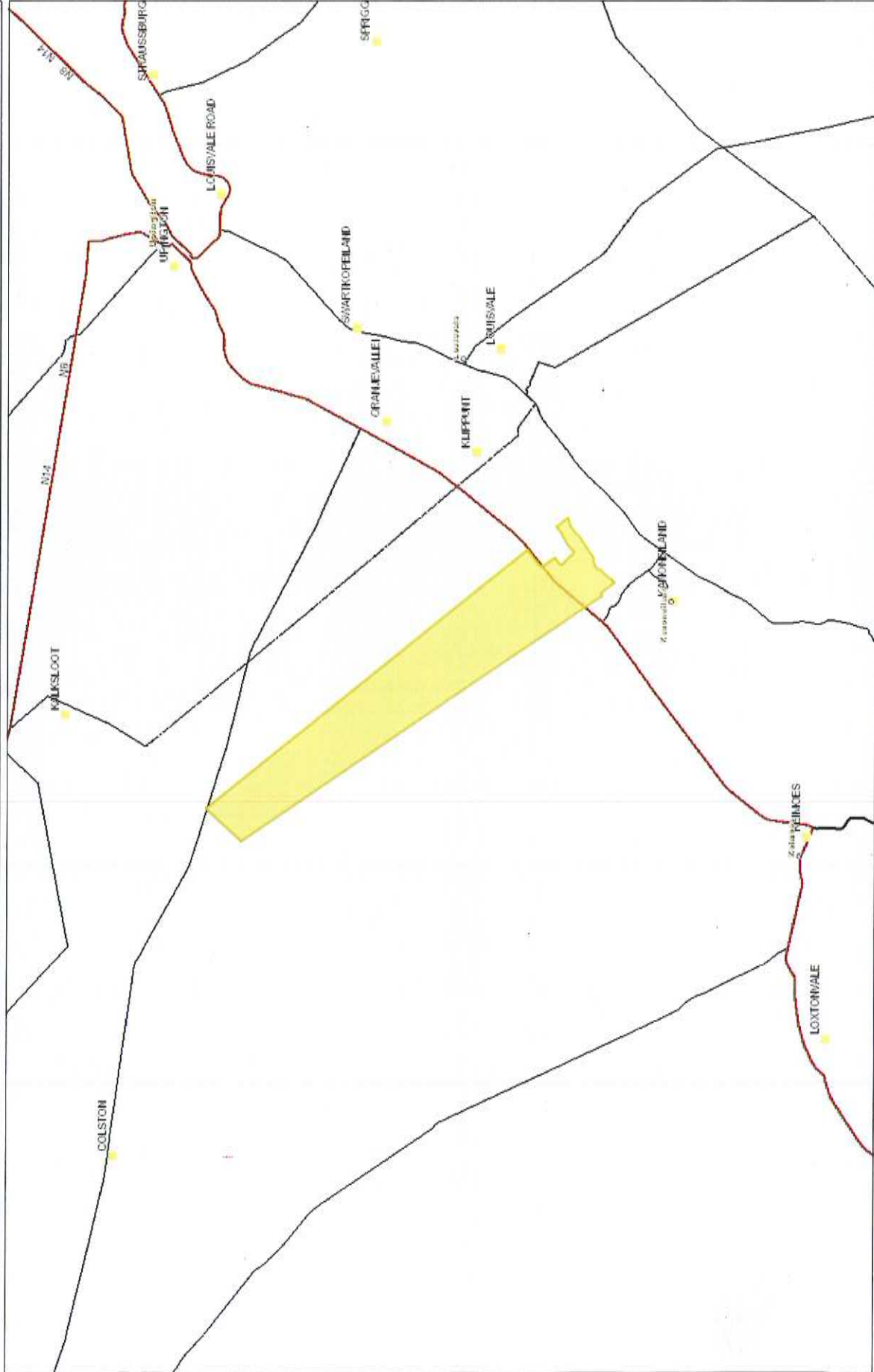
9.7  
4.86  
0  
9.7 Kilometers

This map is a user generated static output from an internet mapping site and is for reference only. Data layers that appear on this map may or may not be accurate, current, or otherwise reliable.

THIS MAP IS NOT TO BE USED FOR NAVIGATION

**Notes**  
NFEPA

**RE Capital 3 Protected Areas**

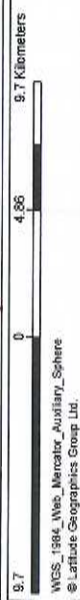


- Legend**
- World Boundaries and Places
  - Towns
  - Local municipalities
  - National roads
  - Secondary roads
  - ARTERIAL ROUTE
  - MAIN ROAD
  - SECONDARY ROAD
  - National parks (NBA 2011)
  - Formal land-based (NBA 2011)
  - Informal land-based (MPAES)
  - Marine - MPA (NBA 2011)

1:191 341

**Notes**  
Protected Areas

This map is a user generated static output from an Internet mapping site and is for reference only. Data layers that appear on this map may or may not be accurate, current, or otherwise reliable.  
THIS MAP IS NOT TO BE USED FOR NAVIGATION



9.7  
0 4.86 9.7 Kilometers  
WGS\_1984\_Web\_Mercator\_Auxiliary\_Sphere  
© Latitude Geographics Group Ltd.



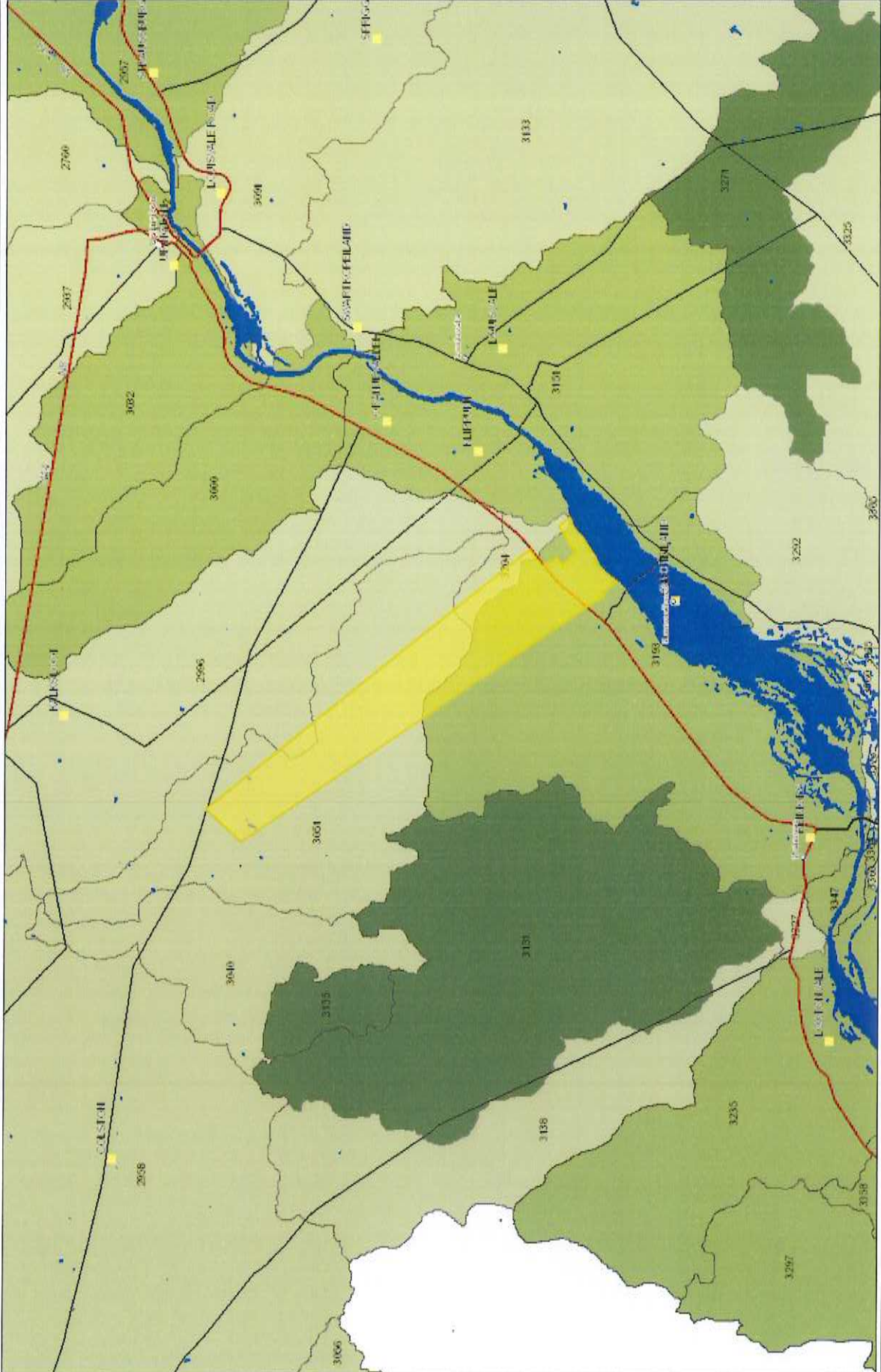
**RE Capital 3 NFEPA Wetlands**



**Legend**

- World Boundaries and Places
  - Towns
  - Local municipalities
  - National roads
  - Secondary roads
  - ARTERIAL ROUTE
  - MAIN ROAD
  - SECONDARY ROAD
- National wetlands map 4 (NFEPA) - Estuaries
  - Wetland NFEPA wetlands map
  - Wetland and estuary FEPA
- River FEPAs
  - river FEPA and associated estuaries
  - Rain Support Area and associated sub-estuary
  - Phase 2 FEPA and associated sub-estuary
  - Upland management area

Scale: 1:191 341



9.7 0 4.85 9.7 Kilometers

This map is a user generated static output from an internet mapping site and is for reference only. Data layers that appear on this map may or may not be accurate, current, or otherwise reliable. THIS MAP IS NOT TO BE USED FOR NAVIGATION.

Notes  
NFEPA Wetlands