

**SCREENING REPORT FOR AN ENVIRONMENTAL AUTHORIZATION OR
FOR A PART TWO AMENDMENT OF AN ENVIRONMENTAL AUTHORISATION
AS REQUIRED BY THE 2014 EIA REGULATIONS – PROPOSED DEVELOPMENT
FOOTPRINT ENVIRONMENTAL SENSITIVITY**

EIA Reference number: N/A

Project name: Williet Boerdery Olie Rivier Farm Expansion EIA

Project title: Environmental Impact Assessment

Date screening report generated: 06/01/2021 10:51:36

Applicant: Williet Boerdery (Pty) Ltd

Compiler: EIMS (Pty) Ltd

Compiler signature:

.....

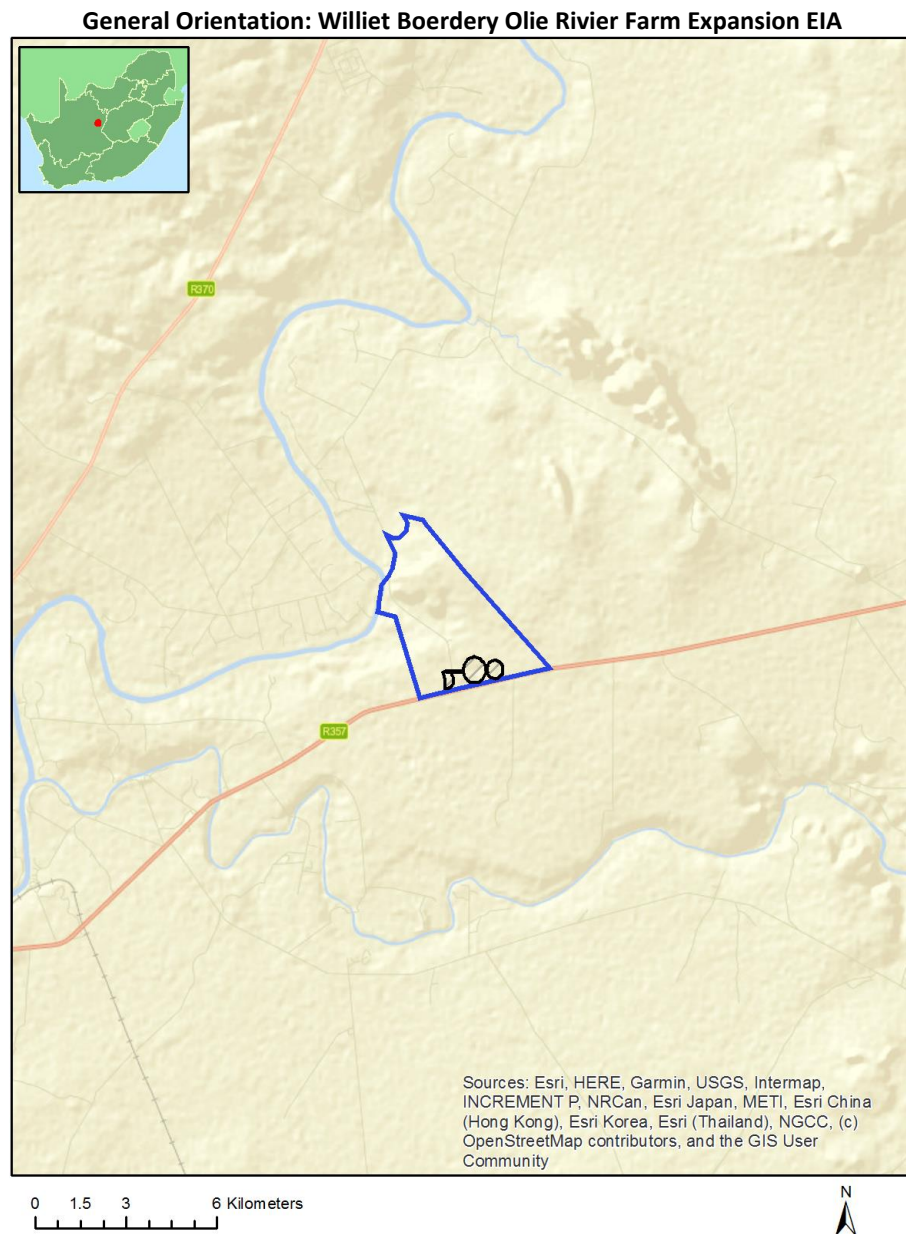


Table of Contents

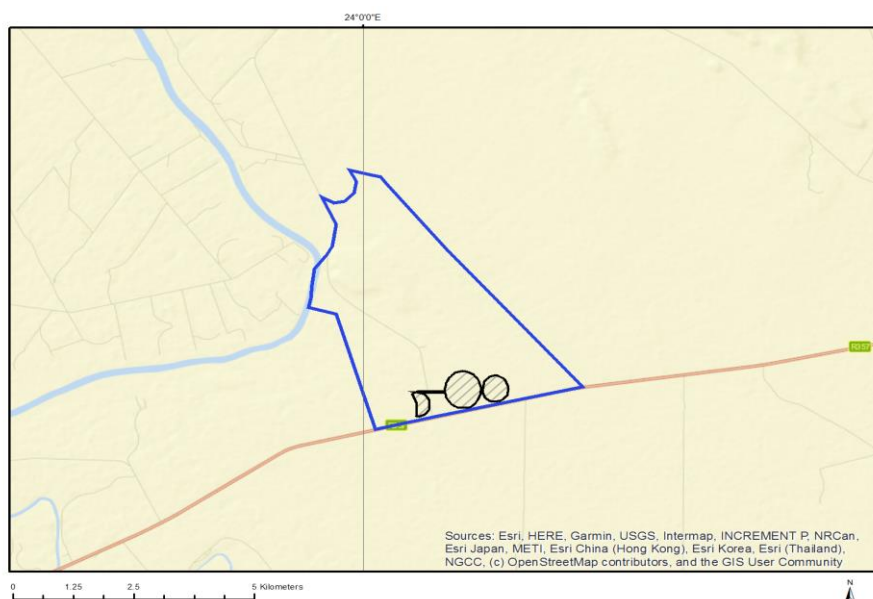
Proposed Project Location	3
Orientation map 1: General location	3
Map of proposed site and relevant area(s)	4
Cadastral details of the proposed site	4
Wind and Solar developments with an approved Environmental Authorisation or applications under consideration within 30 km of the proposed area	6
Environmental Management Frameworks relevant to the application	6
Environmental screening results and assessment outcomes	6
Relevant development incentives, restrictions, exclusions or prohibitions	6
Map indicating proposed development footprint within applicable development incentive, restriction, exclusion or prohibition zones	7
Proposed Development Area Environmental Sensitivity	7
Specialist assessments identified	8
Results of the environmental sensitivity of the proposed area.	10
MAP OF RELATIVE AGRICULTURE THEME SENSITIVITY	10
MAP OF RELATIVE ANIMAL SPECIES THEME SENSITIVITY	11
MAP OF RELATIVE AQUATIC BIODIVERSITY THEME SENSITIVITY	12
MAP OF RELATIVE CIVIL AVIATION THEME SENSITIVITY	13
MAP OF RELATIVE DEFENCE THEME SENSITIVITY	14
MAP OF RELATIVE PALEONTOLOGY THEME SENSITIVITY	15
MAP OF RELATIVE PLANT SPECIES THEME SENSITIVITY	16
MAP OF RELATIVE TERRESTRIAL BIODIVERSITY THEME SENSITIVITY	17

Proposed Project Location

Orientation map 1: General location



Map of proposed site and relevant area(s)



Cadastral details of the proposed site

Property details:

No	Farm Name	Farm/ Erf No	Portion	Latitude	Longitude	Property Type
1	OLIE RIVIER	170	0	28°57'29.04S	24°0'3.15E	Farm
2	OLIE RIVIER	170	0	28°57'25.6S	24°0'34.77E	Farm Portion

Development footprint¹ vertices:

Footprint	Latitude	Longitude
1	28°58'16.64S	24°0'32.75E
1	28°58'15.71S	24°0'34.9E
1	28°58'15.07S	24°0'36.17E
1	28°58'15.22S	24°0'54.73E
1	28°58'14.29S	24°0'54.88E
1	28°58'12.64S	24°0'54.86E
1	28°58'11.35S	24°0'55.17E
1	28°58'9.39S	24°0'55.8E
1	28°58'8.3S	24°0'56.37E
1	28°58'6.1S	24°0'57.66E
1	28°58'5.3S	24°0'58.65E
1	28°58'4.41S	24°0'59.46E
1	28°58'3.52S	24°1'0.7E
1	28°58'2.78S	24°1'1.85E
1	28°58'2.04S	24°1'4.92E
1	28°58'1.59S	24°1'6.58E
1	28°58'2.11S	24°1'8.65E

¹ “development footprint”, means the area within the site on which the development will take place and includes all ancillary developments for example roads, power lines, boundary walls, paving etc. which require vegetation clearance or which will be disturbed and for which the application has been submitted.

1	28°58'2.63S	24°1'11.21E
1	28°58'3.6S	24°1'13.51E
1	28°58'4.04S	24°1'14.08E
1	28°58'4.63S	24°1'14.47E
1	28°58'5.36S	24°1'14.79E
1	28°58'6.25S	24°1'16.33E
1	28°58'7.13S	24°1'16.73E
1	28°58'8.95S	24°1'17.82E
1	28°58'10.19S	24°1'18.04E
1	28°58'11.92S	24°1'18.96E
1	28°58'13.43S	24°1'19.25E
1	28°58'14.93S	24°1'18.96E
1	28°58'15.93S	24°1'18.93E
1	28°58'15.86S	24°1'20.39E
1	28°58'13.21S	24°1'20.15E
1	28°58'10.62S	24°1'20.56E
1	28°58'8.81S	24°1'21.19E
1	28°58'7.05S	24°1'22.63E
1	28°58'6.25S	24°1'23.74E
1	28°58'5.3S	24°1'25.08E
1	28°58'4.56S	24°1'27.59E
1	28°58'4.78S	24°1'29.89E
1	28°58'5.14S	24°1'30.86E
1	28°58'6.61S	24°1'34.17E
1	28°58'8S	24°1'35.31E
1	28°58'11.56S	24°1'37.07E
1	28°58'13.5S	24°1'37.2E
1	28°58'15.5S	24°1'37.08E
1	28°58'17.48S	24°1'36.73E
1	28°58'18.75S	24°1'35.28E
1	28°58'20.15S	24°1'33.83E
1	28°58'21.14S	24°1'32.01E
1	28°58'21.84S	24°1'28.45E
1	28°58'21.7S	24°1'26.54E
1	28°58'21.14S	24°1'24.63E
1	28°58'20.58S	24°1'23.77E
1	28°58'20.09S	24°1'22.83E
1	28°58'18.69S	24°1'21.43E
1	28°58'17S	24°1'20.76E
1	28°58'16.28S	24°1'20.38E
1	28°58'16.35S	24°1'18.83E
1	28°58'20.65S	24°1'16.95E
1	28°58'23.09S	24°1'14.96E
1	28°58'24.82S	24°1'12.45E
1	28°58'25.78S	24°1'10.53E
1	28°58'25.98S	24°1'7.66E
1	28°58'25.85S	24°1'5.03E
1	28°58'25.44S	24°1'2.97E
1	28°58'24.54S	24°1'0.97E
1	28°58'24.19S	24°1'0.18E
1	28°58'23.44S	24°0'59.13E
1	28°58'22.39S	24°0'58.25E
1	28°58'20.93S	24°0'56.87E
1	28°58'19.11S	24°0'55.74E
1	28°58'17.13S	24°0'55.15E
1	28°58'16.28S	24°0'54.97E
1	28°58'15.64S	24°0'36.27E
1	28°58'16.71S	24°0'41.01E
1	28°58'18.4S	24°0'42.67E
1	28°58'19.18S	24°0'43.26E

1	28°58'21.49S	24°0'44.38E
1	28°58'23.71S	24°0'44.36E
1	28°58'27.15S	24°0'43.91E
1	28°58'28.72S	24°0'42.92E
1	28°58'30.15S	24°0'41.38E
1	28°58'31.02S	24°0'39.29E
1	28°58'31.57S	24°0'37.58E
1	28°58'31.29S	24°0'35.6E
1	28°58'23.37S	24°0'35.96E
1	28°58'16.64S	24°0'32.75E

Wind and Solar developments with an approved Environmental Authorisation or applications under consideration within 30 km of the proposed area

No	EIA Reference No	Classification	Status of application	Distance from proposed area (km)
1	12/12/20/2637	Solar PV	Approved	22.6
2	12/12/20/2622	Solar PV	Approved	11.1
3	12/12/20/1941	Solar PV	Approved	22.6
4	12/12/20/2643	Solar PV	Approved	22.6

Environmental Management Frameworks relevant to the application

No intersections with EMF areas found.

Environmental screening results and assessment outcomes

The following sections contain a summary of any development incentives, restrictions, exclusions or prohibitions that apply to the proposed development footprint as well as the most environmental sensitive features on the footprint based on the footprint sensitivity screening results for the application classification that was selected. The application classification selected for this report is:

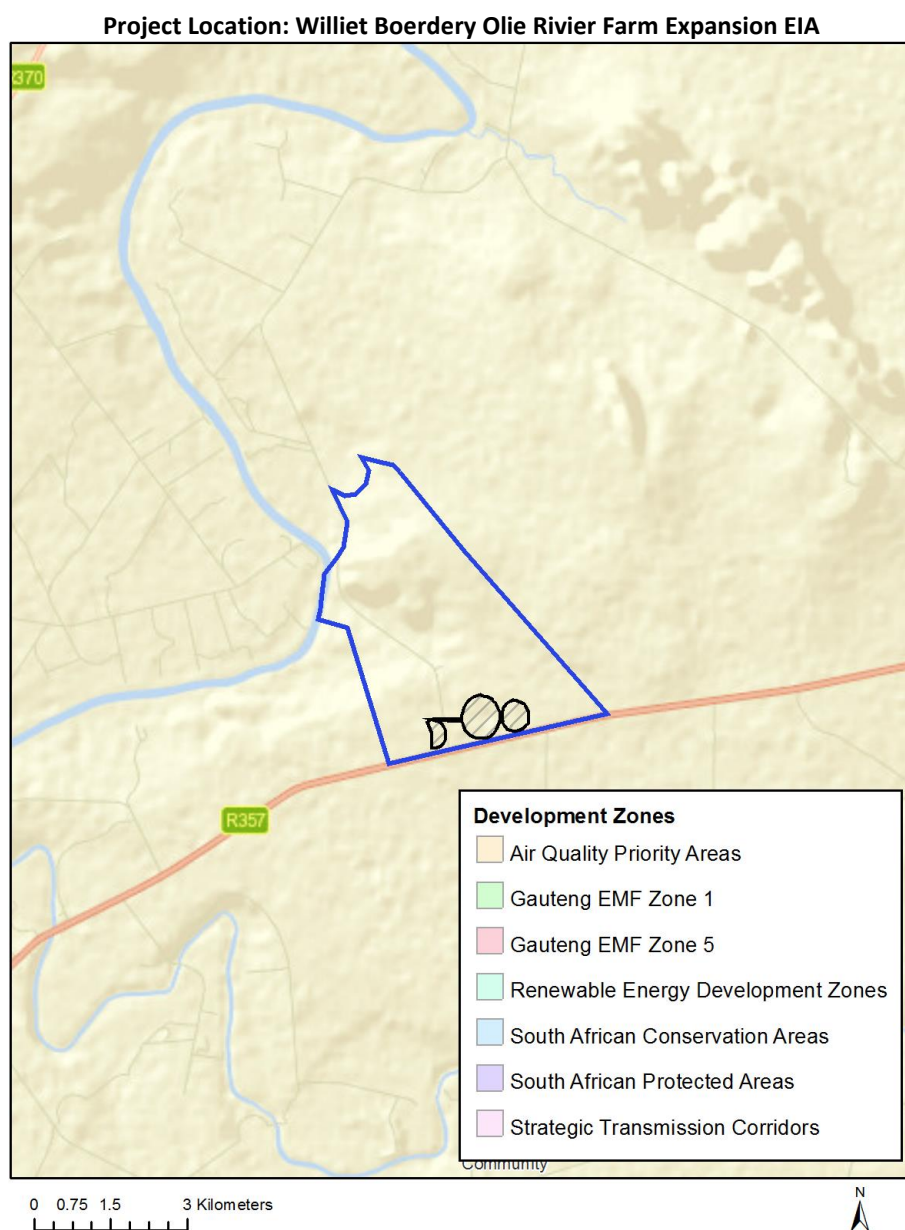
Agriculture_Forestry_Fisheries|Crop Production|Fisheries - Crop Production.

Relevant development incentives, restrictions, exclusions or prohibitions

The following development incentives, restrictions, exclusions or prohibitions and their implications that apply to this footprint are indicated below.

No intersection with any development zones found.

Map indicating proposed development footprint within applicable development incentive, restriction, exclusion or prohibition zones



Proposed Development Area Environmental Sensitivity

The following summary of the development footprint environmental sensitivities is identified. Only the highest environmental sensitivity is indicated. The footprint environmental sensitivities for the proposed development footprint as identified, are indicative only and must be verified on site by a suitably qualified person before the specialist assessments identified below can be confirmed.

Theme	Very High sensitivity	High sensitivity	Medium sensitivity	Low sensitivity
Agriculture Theme			X	
Animal Species Theme			X	

Aquatic Biodiversity Theme				X
Civil Aviation Theme		X		
Defence Theme				X
Paleontology Theme		X		
Plant Species Theme				X
Terrestrial Biodiversity Theme	X			

Specialist assessments identified

Based on the selected classification, and the environmental sensitivities of the proposed development footprint, the following list of specialist assessments have been identified for inclusion in the assessment report. It is the responsibility of the EAP to confirm this list and to motivate in the assessment report, the reason for not including any of the identified specialist study including the provision of photographic evidence of the footprint situation.

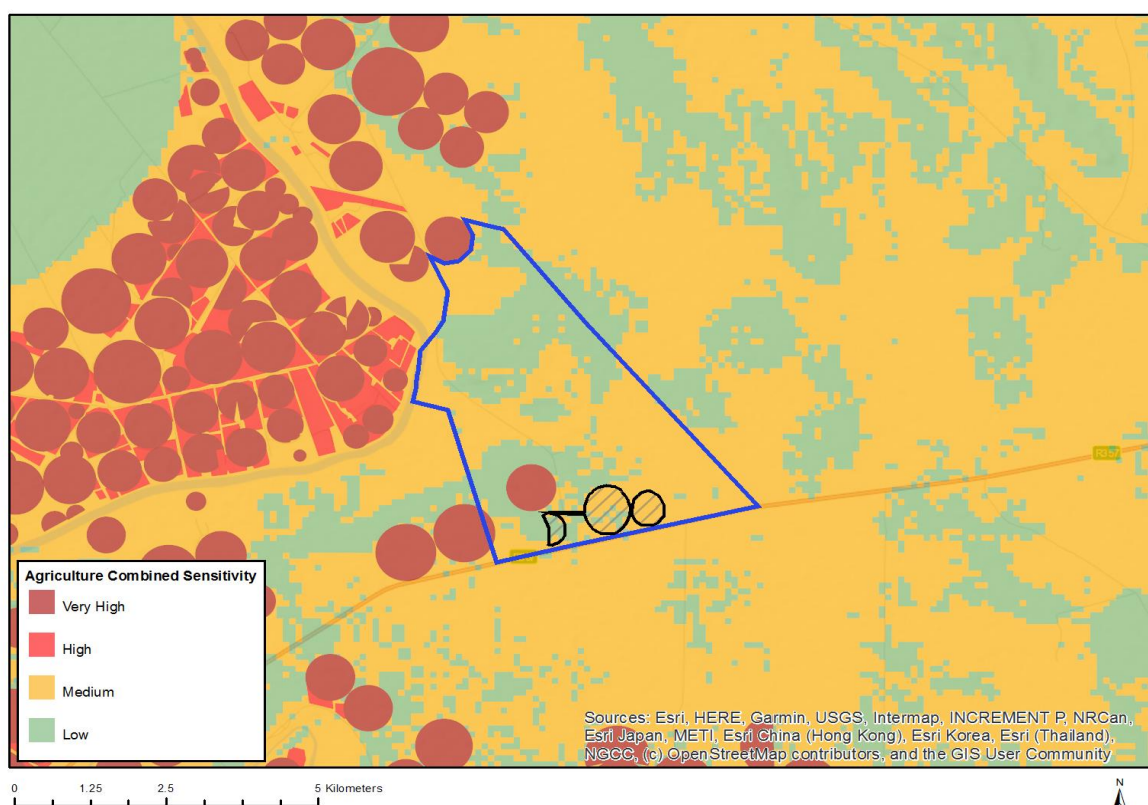
N o	Special ist assess ment	Assessment Protocol
1	Agricultural Impact Assessment	https://screening.environment.gov.za/ScreeningDownloads/AssessmentProtocols/Gazetted_General_Agriculture_Assessment_Protocols.pdf
2	Landscape/Visual Impact Assessment	https://screening.environment.gov.za/ScreeningDownloads/AssessmentProtocols/Gazetted_General_Requirement_Assessment_Protocols.pdf
3	Archaeological and Cultural Heritage Impact Assessment	https://screening.environment.gov.za/ScreeningDownloads/AssessmentProtocols/Gazetted_General_Requirement_Assessment_Protocols.pdf
4	Palaeontology Impact Assessment	https://screening.environment.gov.za/ScreeningDownloads/AssessmentProtocols/Gazetted_General_Requirement_Assessment_Protocols.pdf
5	Terrestrial Biodiversity Impact Assessment	https://screening.environment.gov.za/ScreeningDownloads/AssessmentProtocols/Gazetted_Terrestrial_Biodiversity_Assessment_Protocols.pdf
6	Aquatic Biodiversity Impact Assessment	https://screening.environment.gov.za/ScreeningDownloads/AssessmentProtocols/Gazetted_Aquatic_Biodiversity_Assessment_Protocols.pdf
7	Hydrology	https://screening.environment.gov.za/ScreeningDownloads/AssessmentProtocols

	Assessment	/Gazetted_General_Requirement_Assessment_Protocols.pdf
8	Socio-Economic Assessment	https://screening.environment.gov.za/ScreeningDownloads/AssessmentProtocols/Gazetted_General_Requirement_Assessment_Protocols.pdf
9	Plant Species Assessment	https://screening.environment.gov.za/ScreeningDownloads/AssessmentProtocols/Gazetted_Plant_Species_Assessment_Protocols.pdf
10	Animal Species Assessment	https://screening.environment.gov.za/ScreeningDownloads/AssessmentProtocols/Gazetted_Animal_Species_Assessment_Protocols.pdf

Results of the environmental sensitivity of the proposed area.

The following section represents the results of the screening for environmental sensitivity of the proposed footprint for relevant environmental themes associated with the project classification. It is the duty of the EAP to ensure that the environmental themes provided by the screening tool are comprehensive and complete for the project. Refer to the disclaimer.

MAP OF RELATIVE AGRICULTURE THEME SENSITIVITY

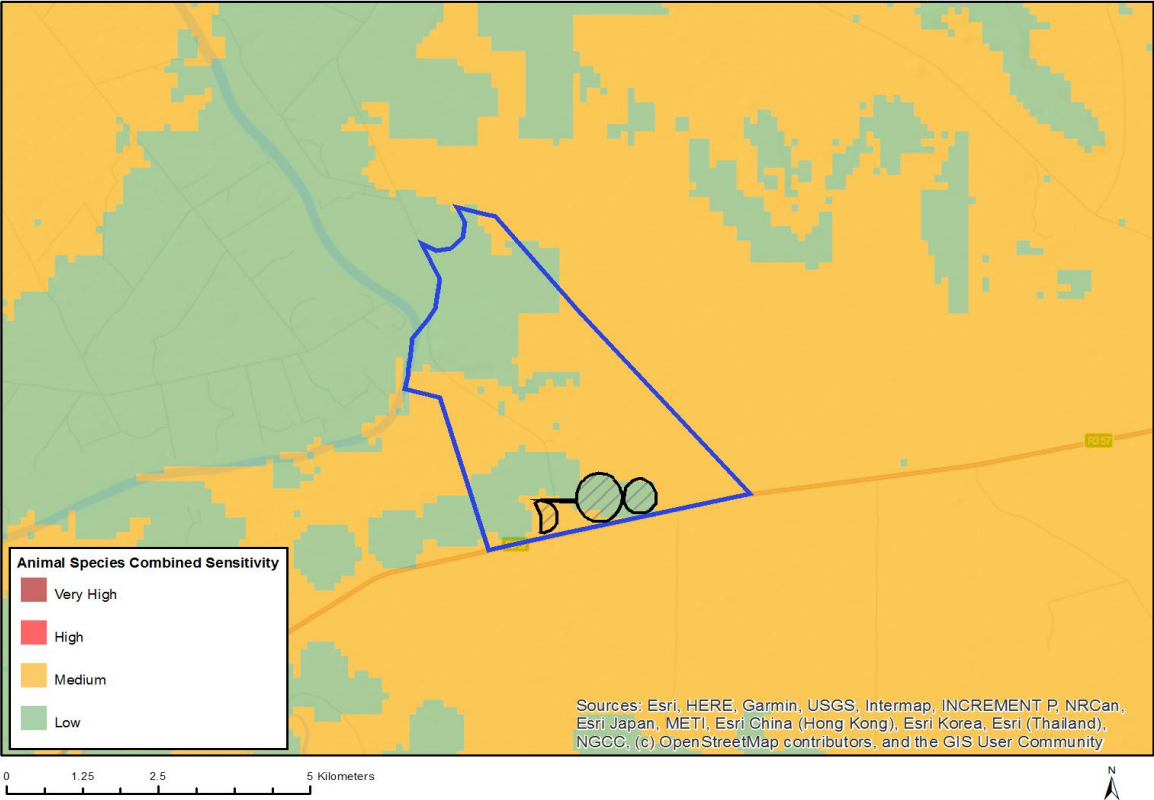


Very High sensitivity	High sensitivity	Medium sensitivity	Low sensitivity
		X	

Sensitivity Features:

Sensitivity	Feature(s)
Low	Land capability;01. Very low/02. Very low/03. Low-Very low/04. Low-Very low/05. Low
Medium	Land capability;06. Low-Moderate/07. Low-Moderate/08. Moderate

MAP OF RELATIVE ANIMAL SPECIES THEME SENSITIVITY

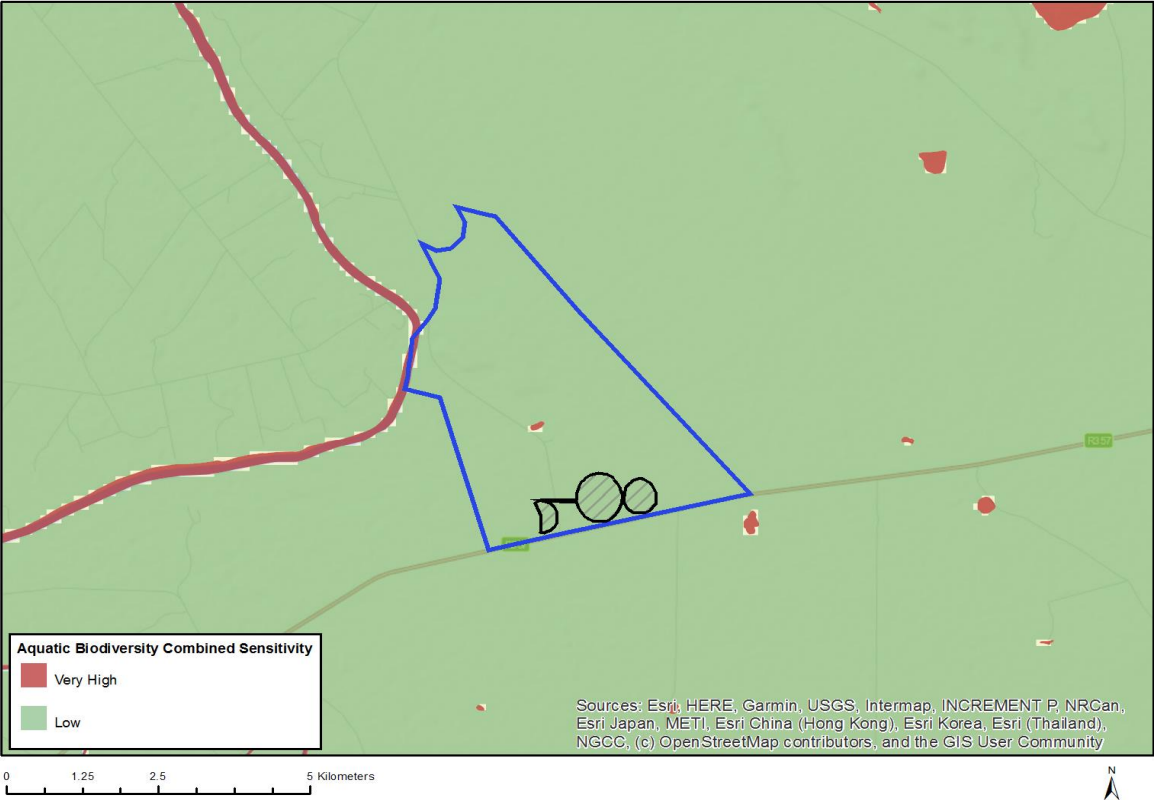


Very High sensitivity	High sensitivity	Medium sensitivity	Low sensitivity
		X	

Sensitivity Features:

Sensitivity	Feature(s)
Low	Low sensitivity
Medium	Aves-Neotis ludwigii

MAP OF RELATIVE AQUATIC BIODIVERSITY THEME SENSITIVITY

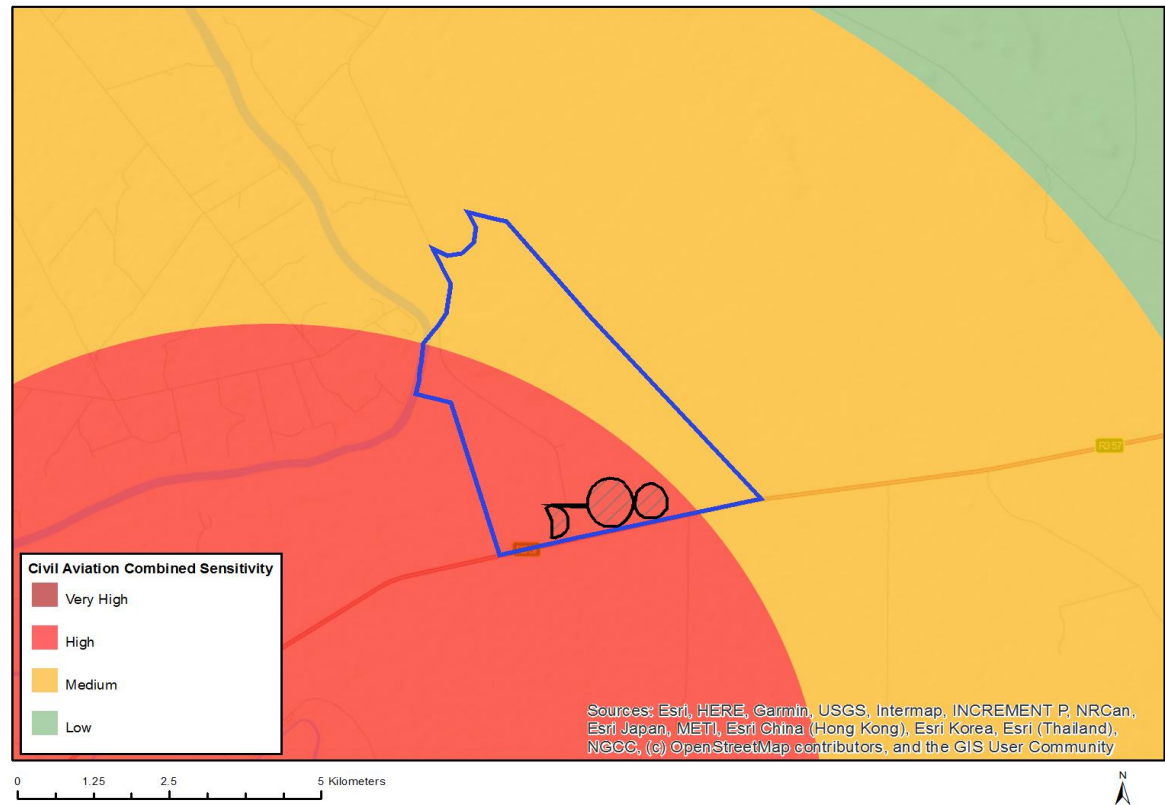


Very High sensitivity	High sensitivity	Medium sensitivity	Low sensitivity
			X

Sensitivity Features:

Sensitivity	Feature(s)
Low	Low sensitivity

MAP OF RELATIVE CIVIL AVIATION THEME SENSITIVITY

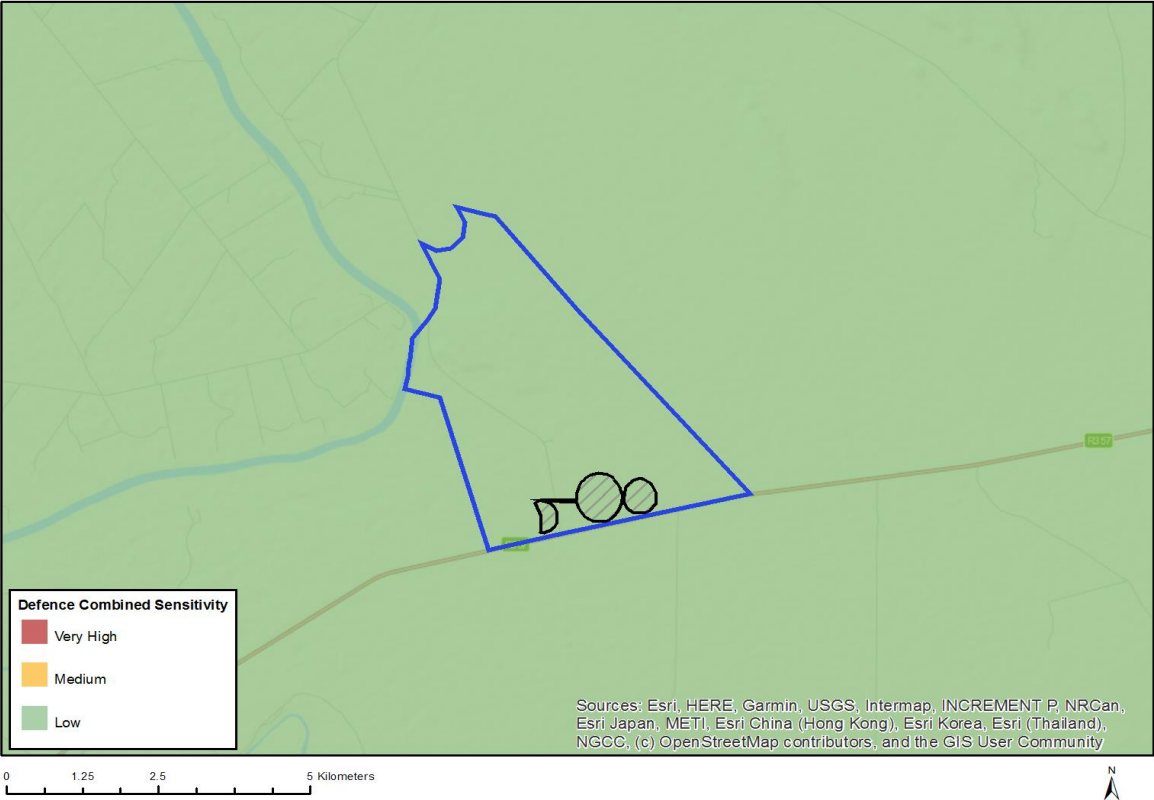


Very High sensitivity	High sensitivity	Medium sensitivity	Low sensitivity
	X		

Sensitivity Features:

Sensitivity	Feature(s)
High	Within 8 km of other civil aviation aerodrome

MAP OF RELATIVE DEFENCE THEME SENSITIVITY

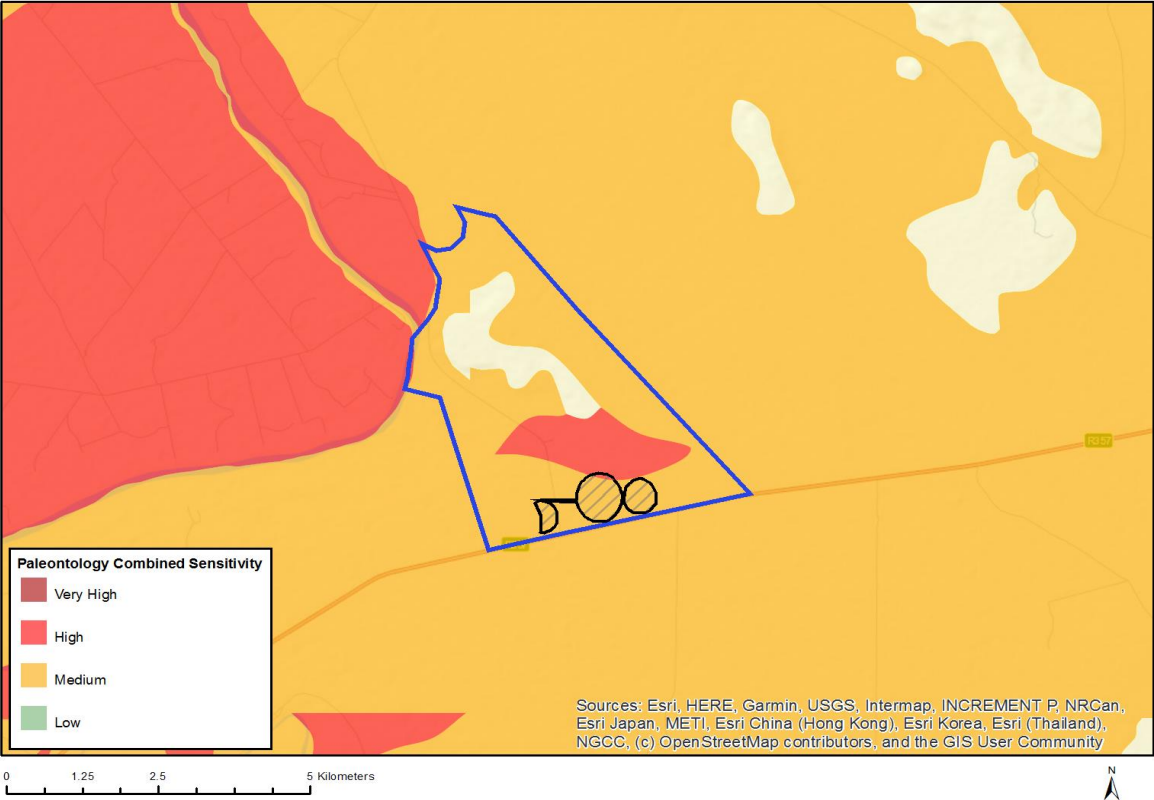


Very High sensitivity	High sensitivity	Medium sensitivity	Low sensitivity
			X

Sensitivity Features:

Sensitivity	Feature(s)
Low	Low sensitivity

MAP OF RELATIVE PALEONTOLOGY THEME SENSITIVITY

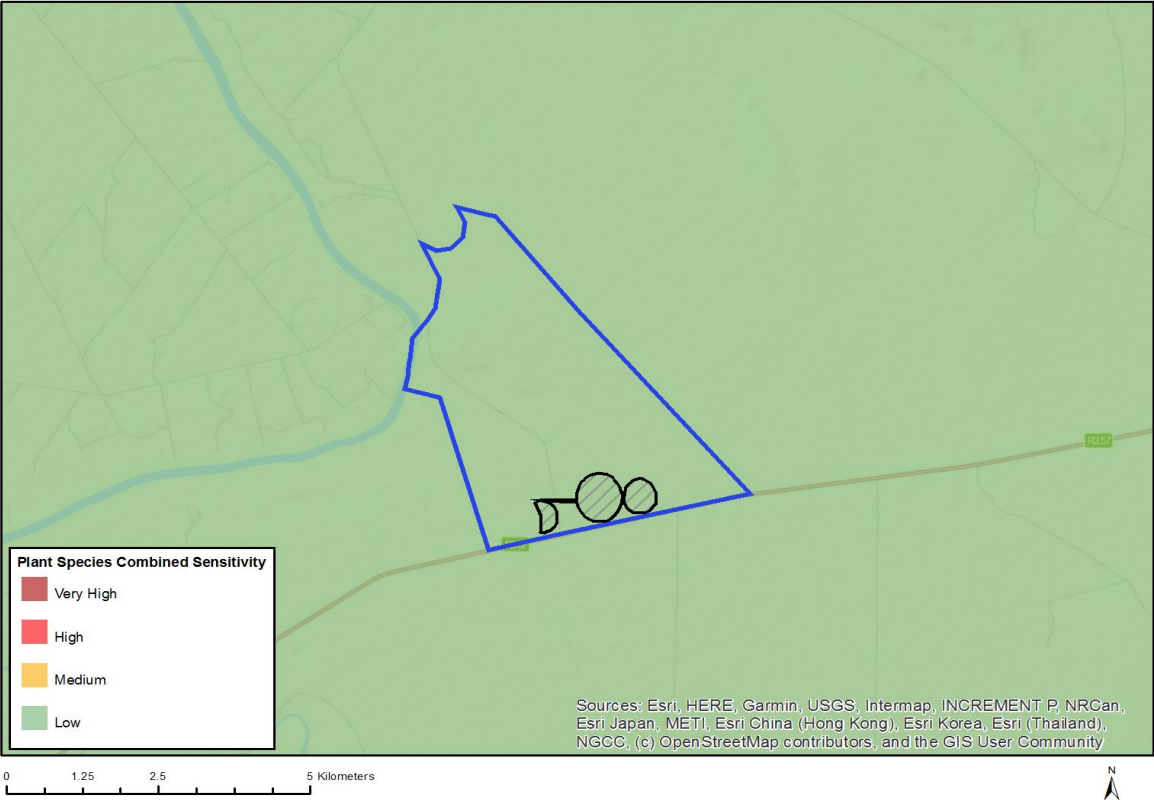


Very High sensitivity	High sensitivity	Medium sensitivity	Low sensitivity
	X		

Sensitivity Features:

Sensitivity	Feature(s)
High	Features with a High paleontological sensitivity
Medium	Features with a Medium paleontological sensitivity

MAP OF RELATIVE PLANT SPECIES THEME SENSITIVITY

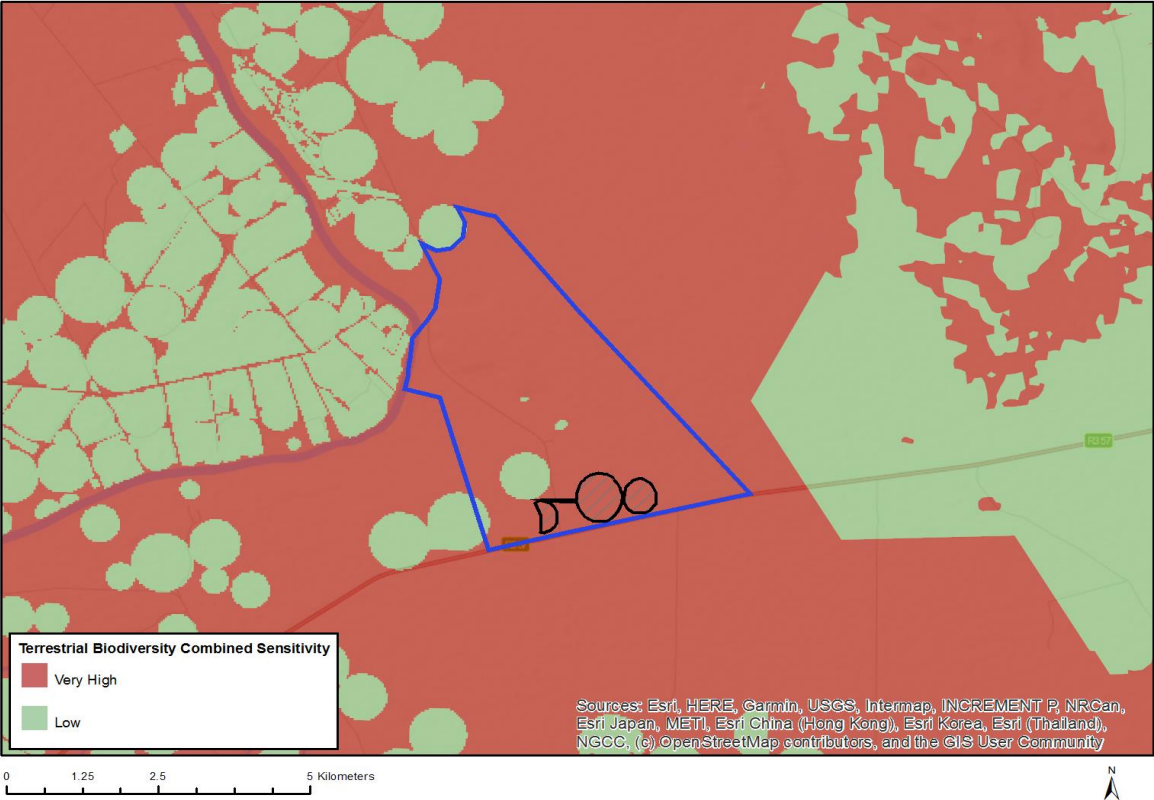


Very High sensitivity	High sensitivity	Medium sensitivity	Low sensitivity
			X

Sensitivity Features:

Sensitivity	Feature(s)
Low	Low Sensitivity

MAP OF RELATIVE TERRESTRIAL BIODIVERSITY THEME SENSITIVITY



Very High sensitivity	High sensitivity	Medium sensitivity	Low sensitivity
X			

Sensitivity Features:

Sensitivity	Feature(s)
Very High	Critical Biodiversity Area 2