


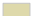





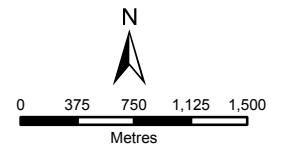
COEGA DEVELOPMENT CORPORATION
LAND USE

Legend

 Proposed Project Area

Land use

-  Cultivated Land
-  Forestry
-  Residential
-  Subsistence Farming
-  Vacant / Unspecified



DISCLAIMER

The information on this figure was derived from various digital databases available to WSP Environmental (Pty) Ltd. All information is provided "as is" and it must be acknowledged that data, information, and maps are dynamic, and in a constant state of maintenance, correction and update. WSP Environmental (Pty) Ltd cannot accept any responsibility for errors, omissions, or positional accuracy where it has not been directly responsible for the production of the data referenced. There are no warranties, expressed or implied, as to the use of this information, including the warranty of merchantability or fitness for a particular purpose. Notification of any errors will be appreciated.



WSP ENVIRONMENTAL (PTY) LTD
BUILDING C, KNIGHTSBRIDGE,
33 SLOANE STREET, BRYANSTON
P.O. BOX 98867, SLOANE PARK 2152, RSA
Tel +27 (0)11 361 1380, Fax +27 (0)11 361 1381, wspe@wspgroup.co.za

DATA SOURCE:

PROJECTION: WGS 29 HARTEBEESTHOEK 94

PROJECT TITLE:

WILD COAST SPECIAL ECONOMIC ZONE

SCALE: 1:50,000

DRAWN BY: SABELO DUBE

DATE: 19/02/2018

REVIEWED BY: TUTAYI

FIGURE NO: 10

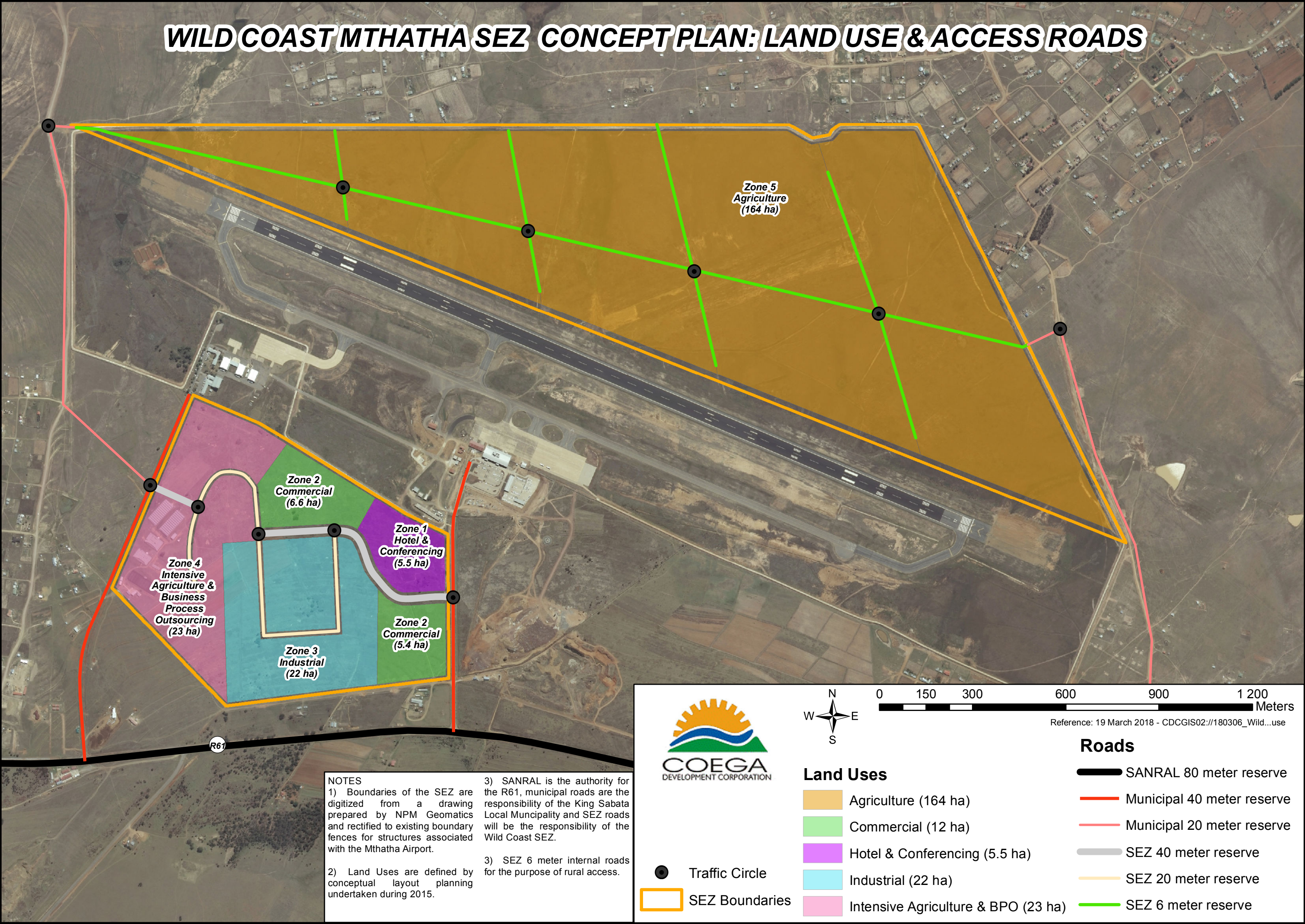
PROJECT NO: 41100611_1

REV:

Source: Esri, DigitalGlobe, GeoEye, Earthstar Geographics, CNES/Airbus DS, USDA, USGS, AeroGRID, IGN, and the GIS User Community

© COPYRIGHT RESERVED
The content of this document is privileged and confidential and may not be disclosed or reproduced without the express authorisation of the author, being "WSP Environmental (Pty) Ltd"

WILD COAST MTHATHA SEZ CONCEPT PLAN: LAND USE & ACCESS ROADS




NOTES

1) Boundaries of the SEZ are digitized from a drawing prepared by NPM Geomatics and rectified to existing boundary fences for structures associated with the Mthatha Airport.


2) Land Uses are defined by conceptual layout planning undertaken during 2015.

3) SANRAL is the authority for the R61, municipal roads are the responsibility of the King Sabata Local Municipality and SEZ roads will be the responsibility of the Wild Coast SEZ.

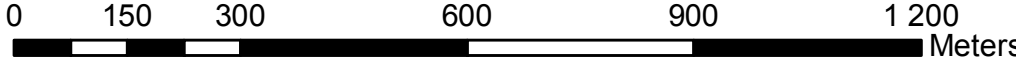
3) SEZ 6 meter internal roads for the purpose of rural access.



COEGA
DEVELOPMENT CORPORATION



N
W E
S



0 150 300 600 900 1 200 Meters

Reference: 19 March 2018 - CDCGIS02://180306_Wild...use

Land Uses

- Agriculture (164 ha)
- Commercial (12 ha)
- Hotel & Conferencing (5.5 ha)
- Industrial (22 ha)
- Intensive Agriculture & BPO (23 ha)

Traffic Circle

SEZ Boundaries

Roads

- SANRAL 80 meter reserve
- Municipal 40 meter reserve
- Municipal 20 meter reserve
- SEZ 40 meter reserve
- SEZ 20 meter reserve
- SEZ 6 meter reserve