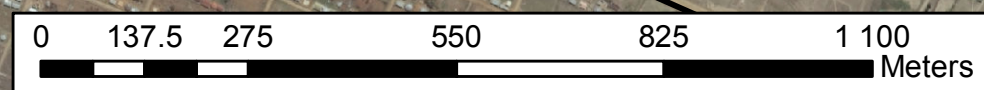
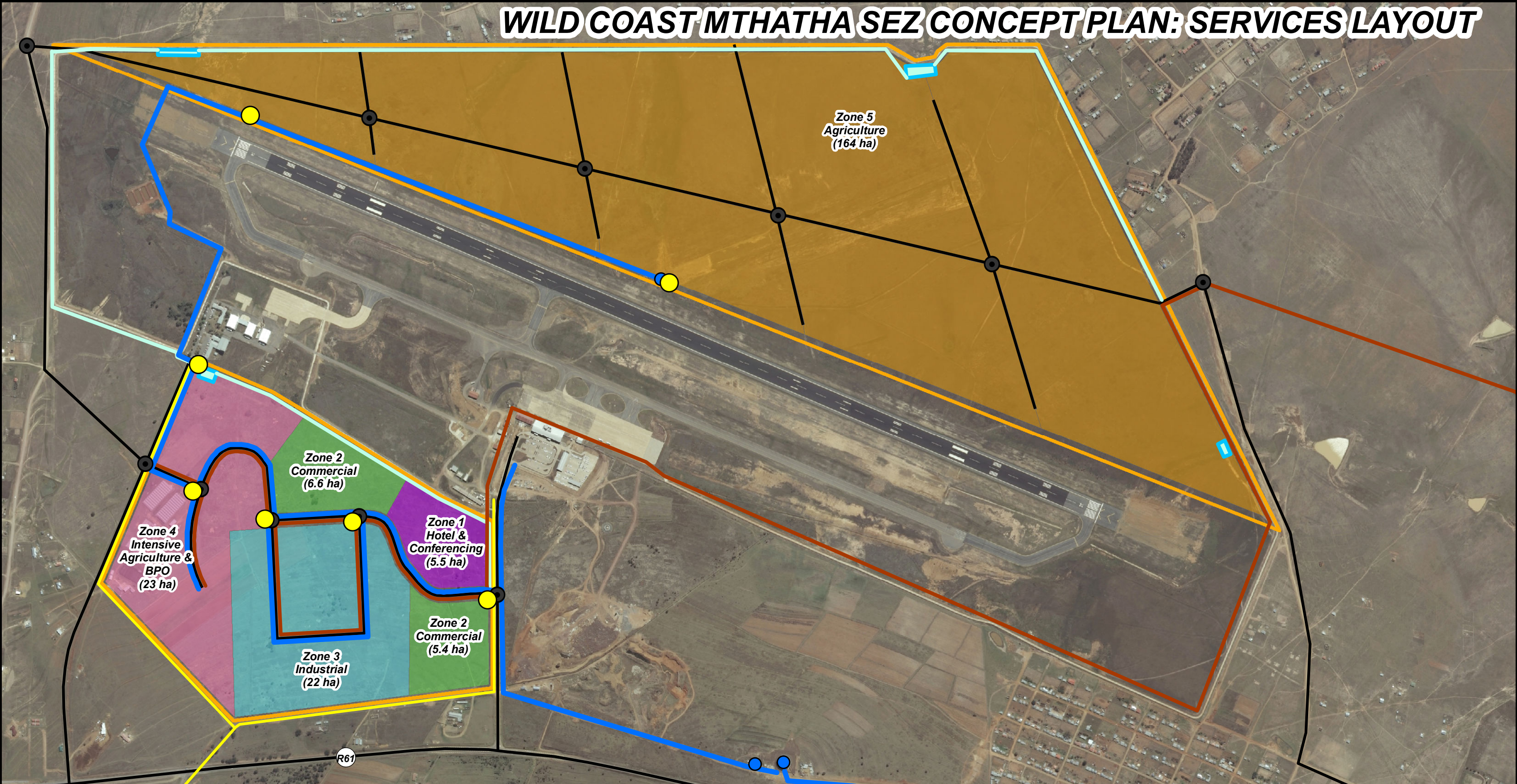


# WILD COAST MTHATHA SEZ CONCEPT PLAN: SERVICES LAYOUT



**NOTES**

1) Electrical: The substation is located at Paynes Farm and the SEZ will be supplied from a 22kva MV supply line. Provision is made for five substations in the Southern section and two substations in the Northern section

2) Water: A 10 MI reservoir will supply the SEZ with internal reticulation within the SEZ from a 200 mm mainline pipeline drawing off a 300 mm bulk gravity.

3) Sewer: The Northern Outfall Sewer is to be extended to the boundary of the SEZ by the local municipality in the longer term. In the shorter term, septic tanks will service the area.

4) Stormwater: Road reserve will incorporate stormwater infrastructure and divert the stormwater via a series of stormwater attenuation ponds. All stormwater attenuation ponds to be monitored for water quality.

5) General Design Principles: Services will generally follow the alignment of roads and the boundaries of the SEZ utilizing gravity to supply and deliver towards a northerly direction. Infrastructure to be sized in consultation with the local municipality

-  Electrical Substations
-  Electrical
-  Reservoirs
-  Water
-  Sewer
-  Stormwater
-  Stormwater Attenuation
- Roads**
-  Roads