

PHOTOGRAPHIC PROOF OF SITE NOTICE PLACEMENT

1st Round of Public Engagement: Announcement of BA process, public participation process, availability of BID

Photographic Proof	Location of Placement
 <p>The photograph shows the interior of a council office with a tiled floor and a large glass door. A red rectangular box highlights the glass door, which has several notices posted on it. The notices are in multiple languages, including English, Sepedi, Sesotho, and Xitsonga.</p>  <p>The photograph shows a wooden table in a room with a tiled floor. On the table are several notices and a white box labeled 'SUGGESTION BOX'. Two people are standing around the table, one pointing at the notices.</p>	<p>a) Moreipuso Traditional Council Office, Wales Road, Casteel</p> <p>Figure 1: Site Notice 1</p> <p>Notice placed in English, Sepedi, Sesotho and Xitsonga.</p> <p>Figure 2: BIDs, Notification letters including ‘Suggestion Box’ placed at Moreipuso Council Office.</p>
 <p>The photograph shows the exterior of a general dealer. A red sign above the entrance reads 'Moshiko General Dealer'. A red rectangular box highlights a notice posted on the wall next to a window. The notice is in multiple languages, including English, Sepedi, Sesotho, and Xitsonga.</p>	<p>b) Moshiko General Dealer, Zoeknog B</p> <p>Figure 2: Site Notice 2</p> <p>Notice placed in English, Sepedi, Sesotho and Xitsonga.</p>



c) Zoeknog Clinic, Zoeknog A.

Figure 3: Site Notice 3

Notice placed in English, Sesotho, Sepedi and Xitsonga.

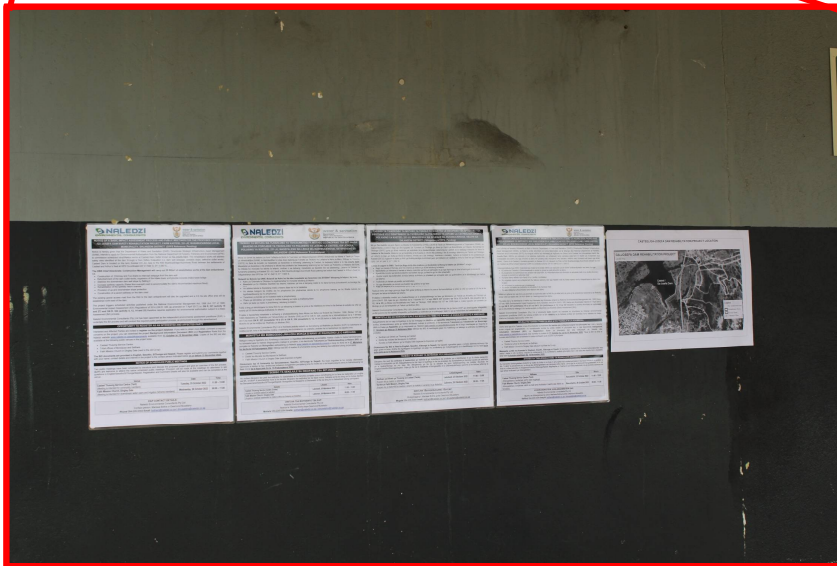




d) U-Save Casteel, next to R40 road

Figure 4: Site Notice 4

Notice placed in English, Sesotho, Sepedi and Xitsonga



e) Casteel, Thusong Service Centre, Labour Offices

Figure 5: Site Notice 5.

Notice placed in English, Sesotho, Sepedi and Xitsonga.



f) SASSA Office, Setlhare Tribal Office Grounds

Figure 6: Site Notice 6.

Notice placed in English, Sesotho, Sepedi and Xitsonga.



g) Setlhare Tribal Office

Figure 7: Site Notice 7.

Notice placed in English, Sepedi, Sesotho and Xitsonga.





h) Marriam Mogakane Community Centre, Acornhoek next to R40 road.

Figure 8: Site Notice 8.

Notice placed in English, Sepedi, Sesotho and Xitsonga.



i) Shoprite, Acornhoek Plaza, Canhuk Drive

Figure 9: Site Notice 9

Notice placed in English, Sepedi, Sesotho and Xitsonga



j) Access road at Casteel Dam, next to the R40 road.

Figure 10: Site Notice 10.

Notice placed in English, Sepedi, Sesotho and Xitsonga



k) Champagne Citrus Estate entrance gate.

Figure 11: Site Notice 11.

Notice placed in English, Sepedi, Sesotho and Xitsonga



l) Shoprite (notice board), Acornhoek Mall, next to the R40.

Figure 12: Site Notice 12.

Notice placed in English, Sepedi, Sesotho and Xitsonga

REFER TO FIGURE 13 AND 14 FOR LOCALITY PLANS SHOWING THE SITE NOTICE PLACEMENT LOCATIONS THROUGHOUT THE PROJECT AREA.



Figure 13: Locality Map showing the location of site notices placed in the Acornhoek area within the Setlhare Traditional Council Area

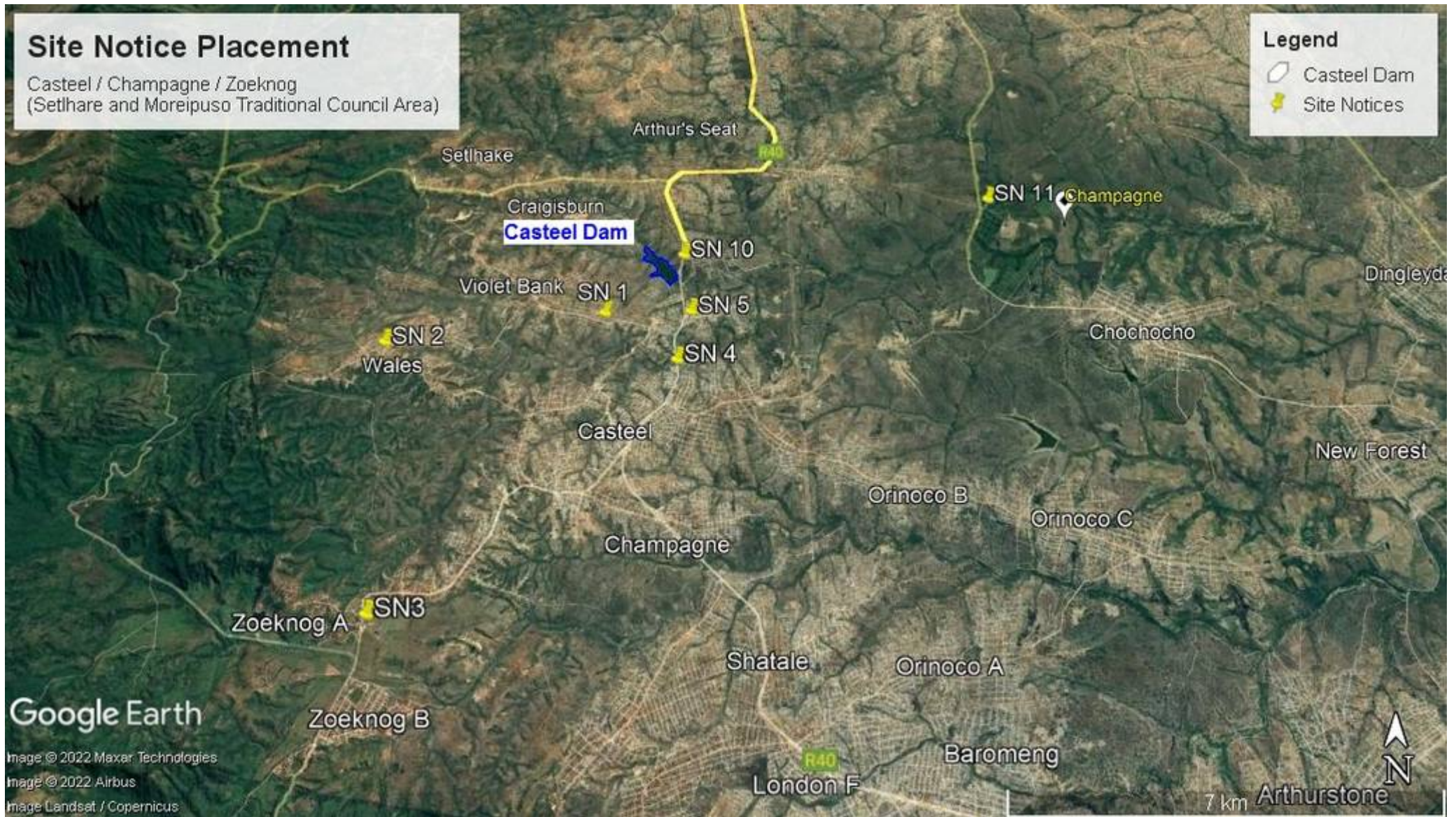


Figure 14: Regional locality map showing the location of site notices placed in the Casteel, Zoeknog, Wales and at Champagne Citrus Farm