
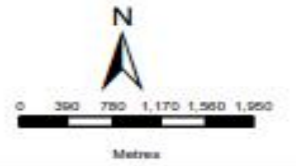


**ANGLO AMERICAN
PLATINUM LIMITED**
POLOKWANE SMELTER
LOCATION

Legend

 Polokwane Smelter



DATA SOURCE: ARC GIS 10.2.2

PROJECTION: WGS 25 HARTBEESHOEK 1984

PROJECT TITLE: PROPOSED INSTALLATION OF SULPHUR
DIOXIDE ABATEMENT EQUIPMENT AT ANGLO AMERICAN
PLATINUM LIMITED - POLOKWANE SMELTER

PROJECT NO: 31102

SCALE: 1:95,000 AT A4

DATE: 7 OCTOBER 2016

DRAWN BY: ANNI SCHEEPERS

REVIEWED BY: NGEL SEED

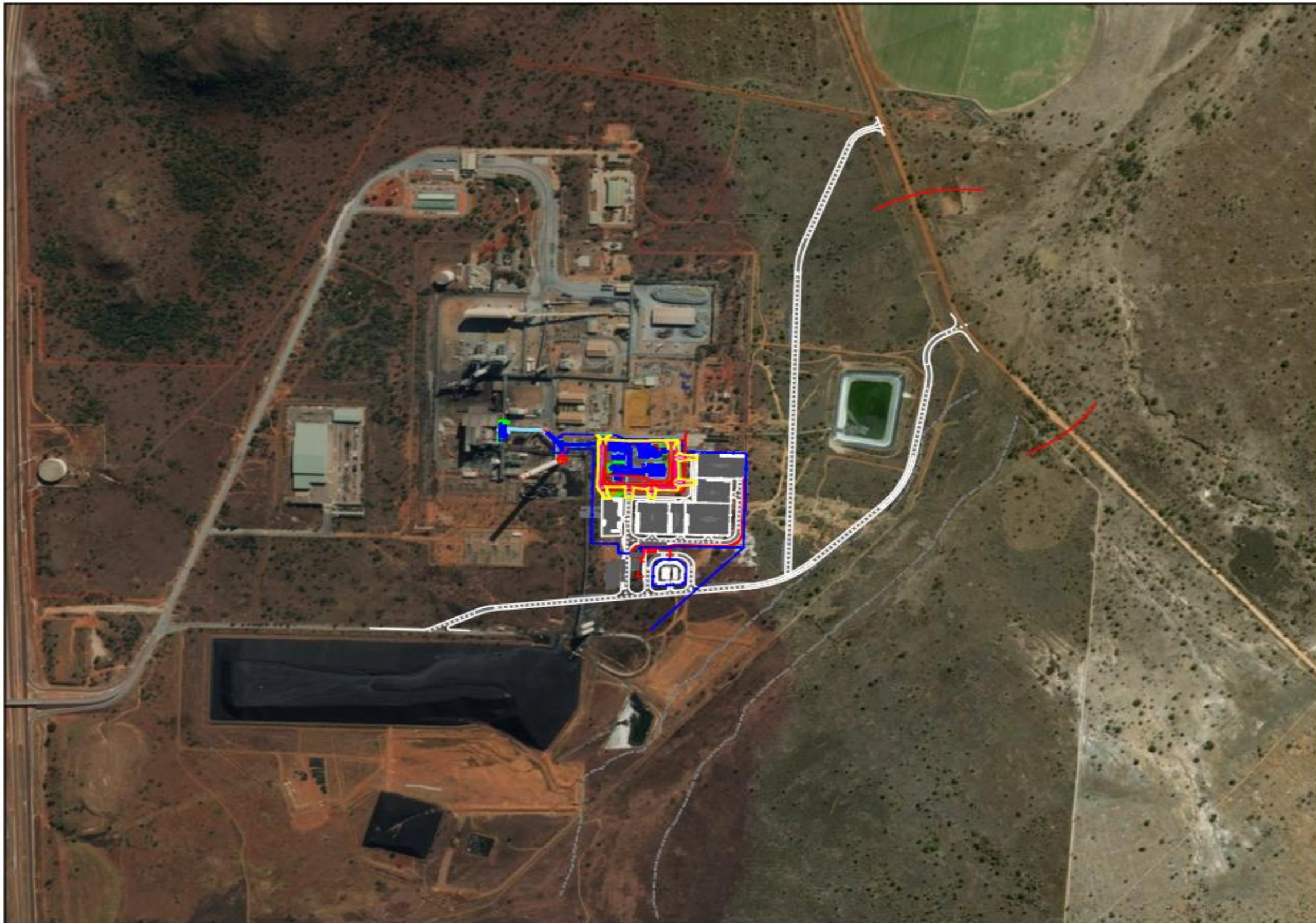


WWW.WSP.PR.COM

DISCLAIMER

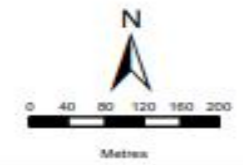
The information on this figure was derived from various digital databases available to WSP Environmental (Pty) Ltd. All information is provided "as is" and it must be acknowledged that data, information, and maps are dynamic and in a constant state of modification, correction and update. WSP Environmental (Pty) Ltd cannot accept any responsibility for errors, omissions, or positional accuracy where it has not been directly responsible for the production of the data referenced. There are no warranties expressed or implied as to the use of the information, including the accuracy of readability or fitness for a particular purpose. Rectification of any errors will be requested.

Source: Esri, DigitalGlobe, GeoEye, Earthstar Geographics, CNES/Airbus DS, USDA, USGS, AEX, Getmapping, Aerogrid, IGN, IGP, swisstopo, and the GIS User Community



**ANGLO AMERICAN
PLATINUM LIMITED**

Proposed Layout



DATA SOURCE: ARC GIS 10.2.2

PROJECTION: WGS 25 HARTBEESHOGK 1984

PROJECT TITLE: PROPOSED INSTALLATION OF SULPHUR
DIOXIDE ABATEMENT EQUIPMENT AT ANGLO AMERICAN
PLATINUM LIMITED: POLOKWANE SMELTER

PROJECT NO: 31102

SCALE: 1:10,000 AT A4

DATE: 7 OCTOBER 2016

DRAWN BY: ANDR SCHIEPERS

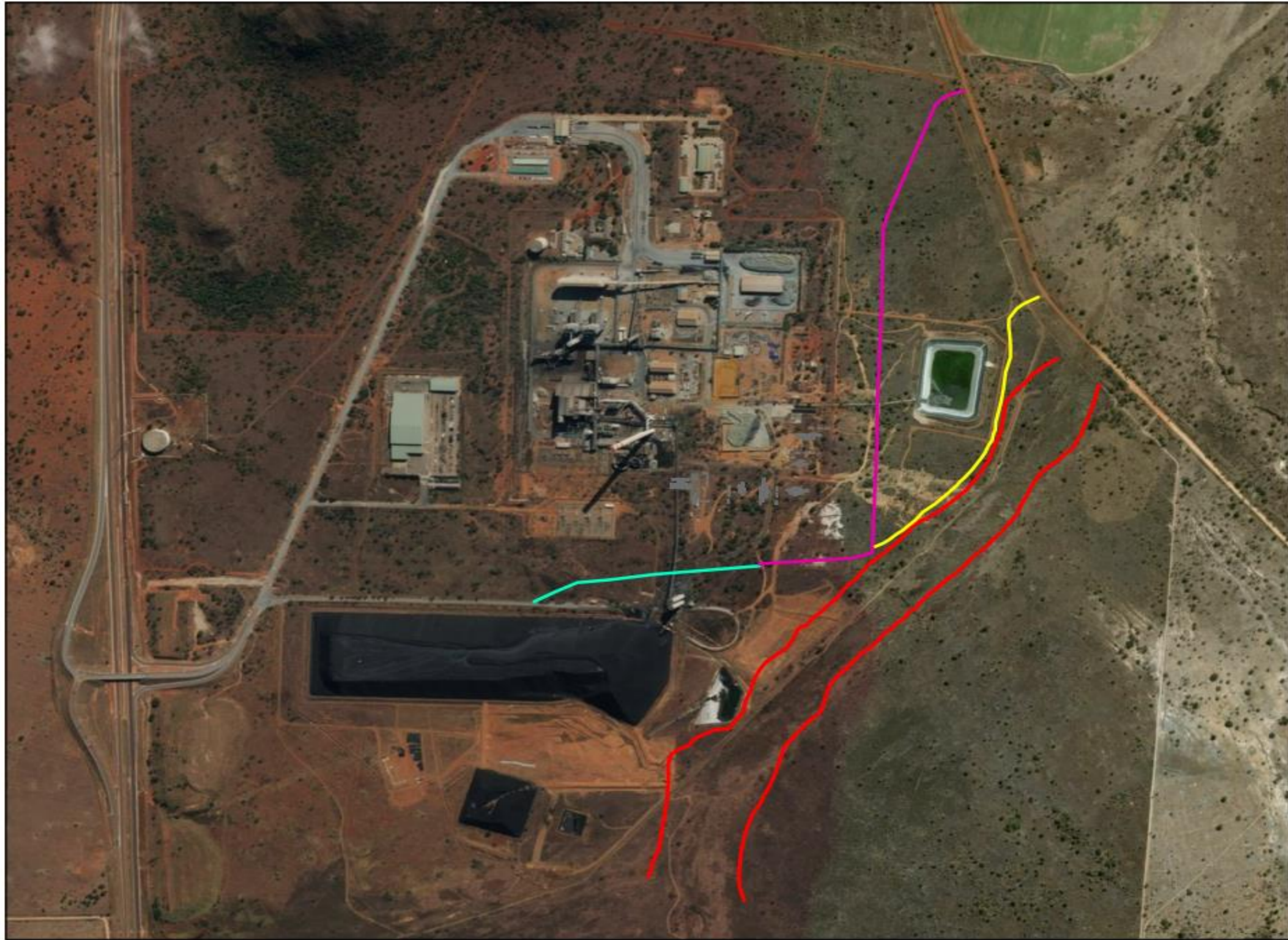
REVIEWED BY: NIGEL SEED



WWW.WSP.PE.COM

DISCLAIMER

The information on this plan was derived from various digital databases available to WSP Environmental (Pty) Ltd. All information is provided "as is" and it must be acknowledged that this information and maps are dynamic and in a constant state of maintenance, correction and update. WSP Environmental (Pty) Ltd cannot accept any responsibility for errors, omissions, or positional accuracy where it has not been directly responsible for the production of the data referenced. There are no warranties, expressed or implied, as to the use of this information, including the accuracy of measurements or fitness for a particular purpose. Distortion of any areas will be appreciated.

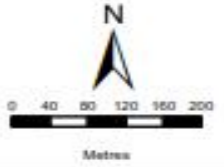


**ANGLO AMERICAN
PLATINUM LIMITED**

FINAL ACCESS ROUTES

Legend

- Preferred Route
- Route Alternative 3
- Route Alternative 1
- 1:100 Year Floodline

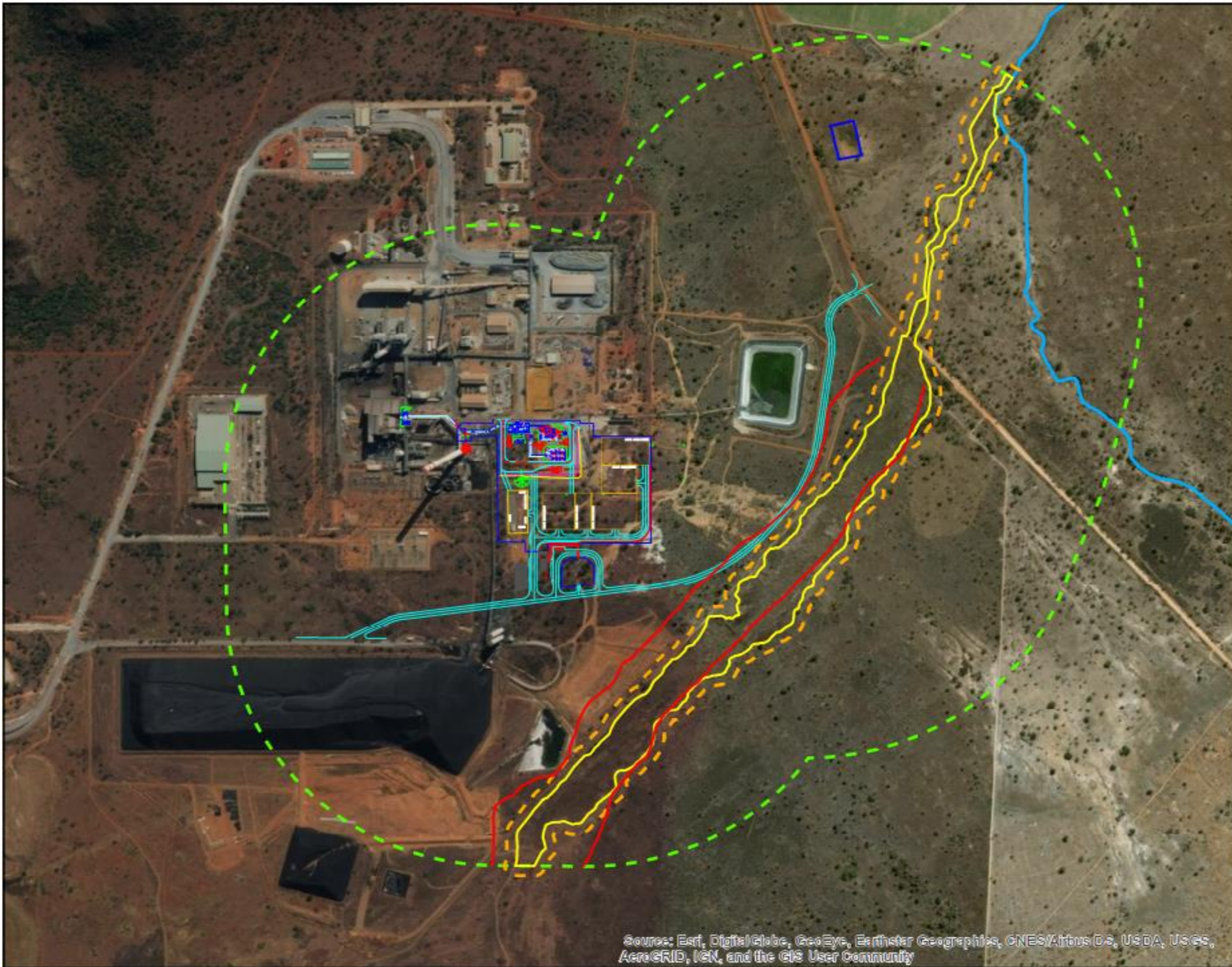


DATA SOURCE: ANC GIS 10.2.2	
PROJECTION: WGS 25 HARTEBESHOEK 1984	
PROJECT TITLE: PROPOSED INSTALLATION OF SULPHUR DIOXIDE ABATEMENT EQUIPMENT AT ANGLO AMERICAN PLATINUM LIMITED, POLOKWANE SMELTER	
PROJECT NO: 31102	
SCALE: 1:10,000 AT A4	DATE: 7 OCTOBER 2016
DRAWN BY: ANRI SCHEEPERS	
REVIEWED BY: NGEL SEED	



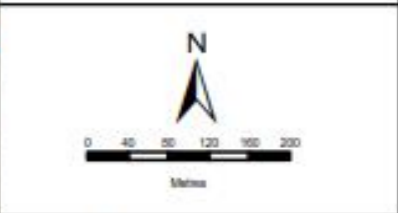
WWW.WSP.PB.COM

DISCLAIMER
 The information on this figure was derived from various digital databases available to WSP Environmental (Pty) Ltd. All information is provided "as is" and it must be acknowledged that data, information, and maps are dynamic and in a constant state of maintenance, correction and update. WSP Environmental (Pty) Ltd cannot accept any responsibility for errors, omissions, or positional accuracy where it has not been directly responsible for the production of the data referenced. There are no warranties, expressed or implied, as to the use of this information, including the warranty of non-infringement or fitness for a particular purpose. Distribution of any errors will be appreciated.



ANGLO AMERICAN PLATINUM
FRESHWATER ECOSYSTEMS WITHIN 500M OF THE PROPOSED SO₂ SYSTEM

- Legend**
- Sterkloopspruit
 - Floodlines from SRK 2012 Stormwater Management Plan
 - Channelled valley-bottom wetland (CVB)
 - Artificial excavation
 - 500m Buffer
 - 19m CVB Buffer



DATA SOURCE:
 SOUTH AFRICAN DEPARTMENT OF RURAL DEVELOPMENT AND LAND REFORM-
 CHIEF DIRECTORATE: NATIONAL GEO-SPATIAL INFORMATION
 NERSA

PROJECTION: WGS 29 HARTEBEESHOEK 94

PROJECT TITLE:
 SO₂ ABATEMENT PROJECT FOR POLOKwane SMELTER

PROJECT NO: 31102_7

SCALE: 1:9,300 AT A4 DATE: 2017/05/15

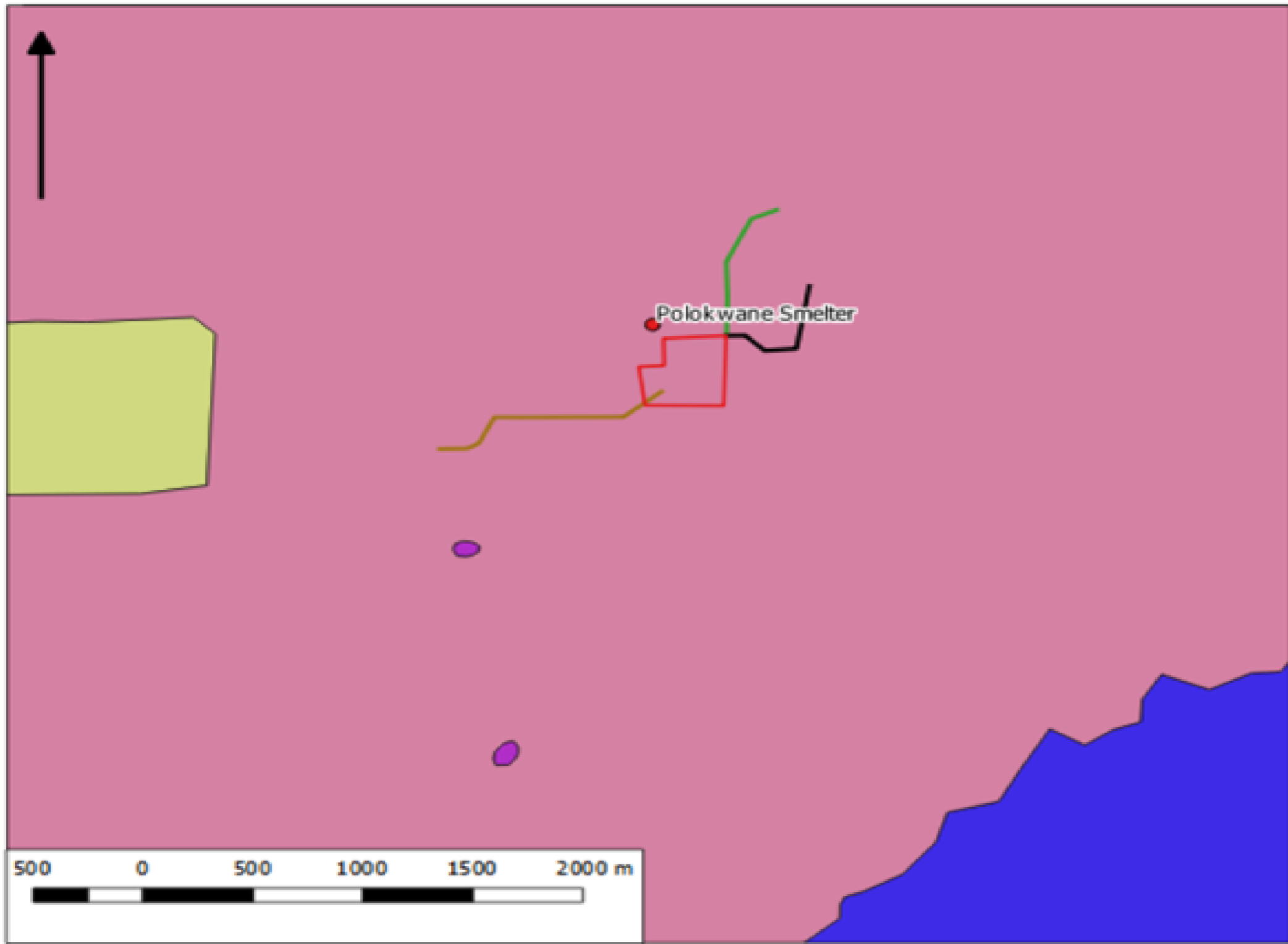
DRAWN BY: SABELO DUBE FIGURE NO: 2

REVIEWED BY: ZAKARIYA NAKHOODA



DISCLAIMER
 The information on this figure was derived from various digital databases available to WSP Environmental (Pty) Ltd. All information is provided 'as is' and it must be acknowledged that data, information and maps are dynamic and in a constant state of maintenance, correction and update. WSP Environmental (Pty) Ltd cannot accept any responsibility for errors, omissions, or positional accuracy unless it has not been directly responsible for the production of the data referenced. There are no warranties, expressed or implied, as to the use of this information, including the accuracy, completeness or fitness for a particular purpose. Modification of any errors will be appreciated.

Source: Esri, DigitalGlobe, GeoEye, Earthstar Geographics, CNES/Airbus DS, USDA, USGS, AeroGRID, IGN, and the GIS User Community



Legend

- Project Area
- Proposed Road
- Road Alternative 1
- Road Alternative 2
- Polokwane Smelter

Limpopo Conservation Plan

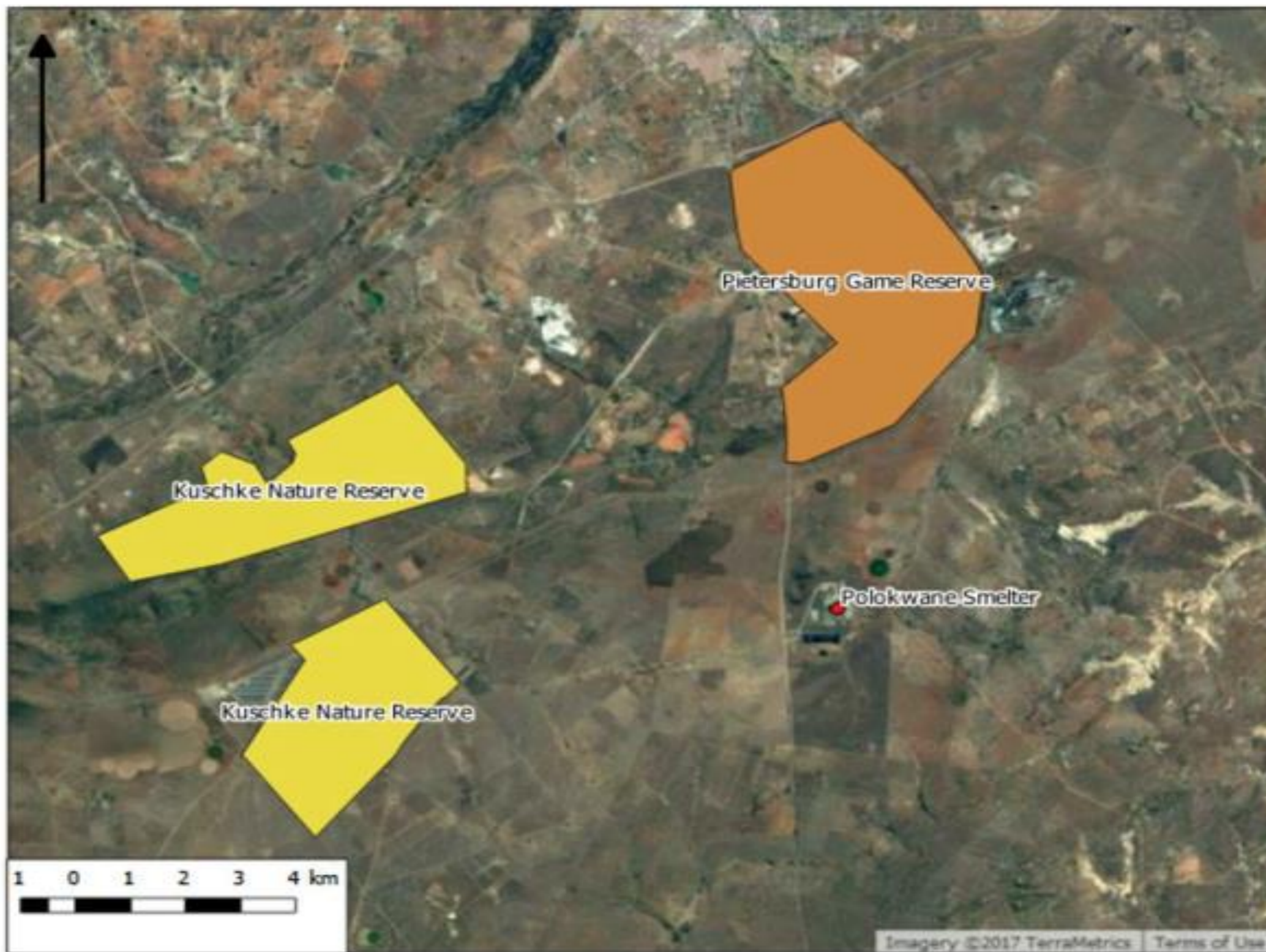
- CBA1
- CBA2
- ESA1
- ESA2
- NNR
- CNA
- PA

Google Satellite

1:0



the
BIODIVERSITY
company



Legend

- Project Area
- Proposed Road
- Road Alternative 1
- Road Alternative 2
- Polokwane Smelter
- Informal_protected_areas
- Pietersburg G Res
- Formal_Protected_Areas
- Kuschke Nat Res
- Google Satellite

1:0

Provincial Context

A map of South Africa showing provincial boundaries. A red dot is placed in the northern province to indicate the project's location.

the **BIODIVERSITY** company