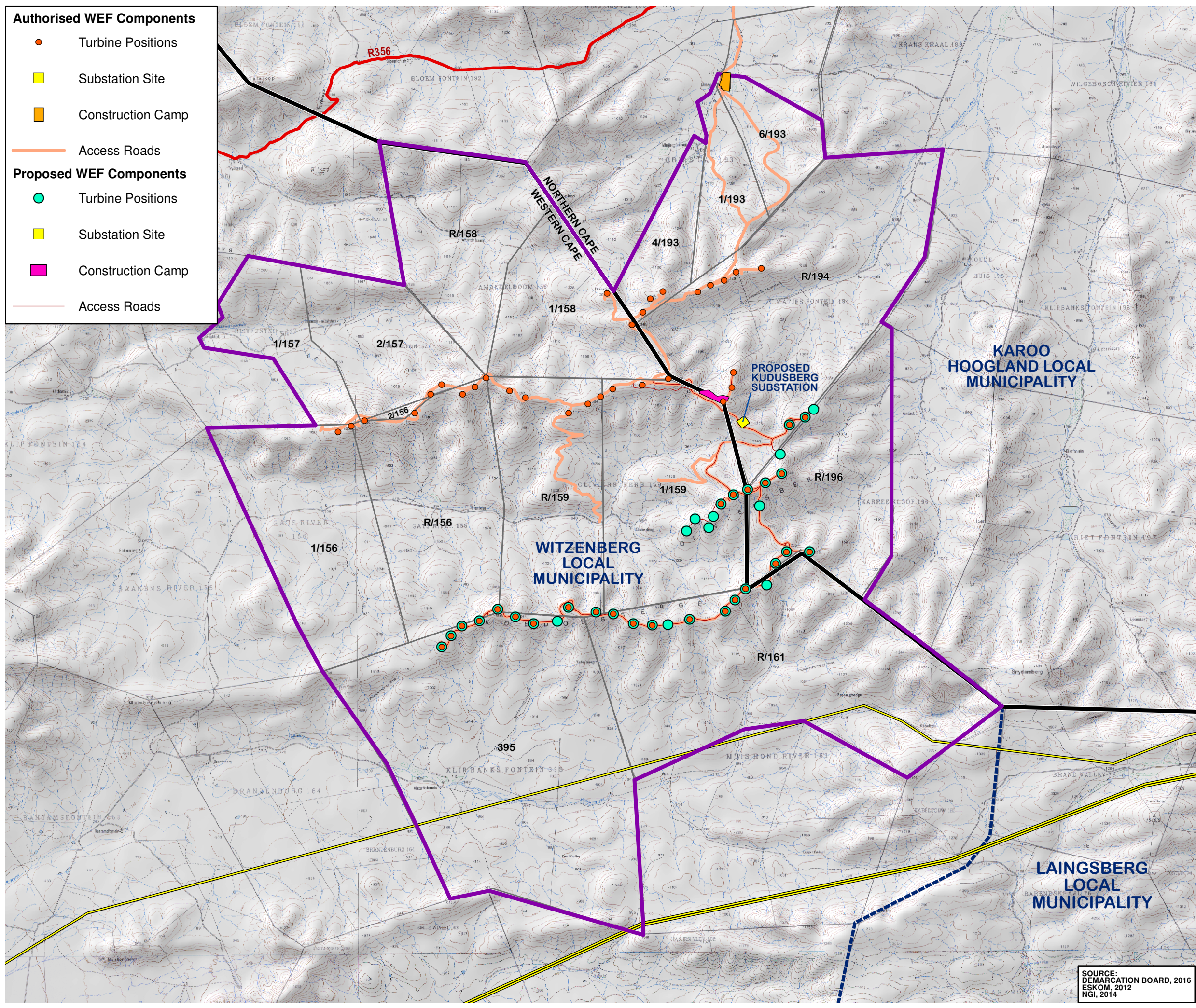
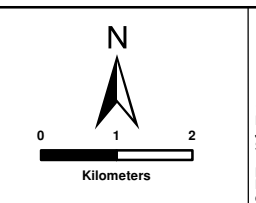


- Authorised WEF Components**
- Turbine Positions
 - Substation Site
 - Construction Camp
 - Access Roads
- Proposed WEF Components**
- Turbine Positions
 - Substation Site
 - Construction Camp
 - Access Roads



PROPOSED PART 2 AMENDMENT TO THE AUTHORISED 325MW KUDUSBERG WEF NEAR MATJIESFONTEIN, WESTERN AND NORTHERN CAPE PROVINCES KUDUSBERG WIND ENERGY FACILITY: LAYOUT COMPARISON

- Legend**
- Provincial Boundaries
 - - - Local Municipal Boundaries
 - Main Roads
 - Existing High Voltage Power Lines (>=400kV)
 - Rivers
 - Farm Portions
 - Authorised Kudusberg WEF Application Site



SIVEST
 ENVIRONMENTAL DIVISION
 12 AUTUMN ROAD
 RIVONIA, 2128
 JOHANNESBURG
 SOUTH AFRICA
 Phone: +27 11 798 0600
 Fax: +27 11 803 7272
 e-mail: info@sivest.co.za

Project No 16235	Prepared By KLS	Date 26/10/2020
Map Ref No 16235/W04	Revision 0	Date

"COPYRIGHT IS VESTED IN SIVEST IN TERMS OF THE COPYRIGHT ACT (ACT 98 OF 1978) AND NO USE OR REPRODUCTION OR DUPLICATION THEREOF MAY OCCUR WITHOUT THE WRITTEN CONSENT OF THE AUTHOR"

SOURCE:
 DEMARCATION BOARD, 2016
 ESKOM, 2012
 NGI, 2014

THIS MAP HAS BEEN PREPARED UNDER THE CONTROLS ESTABLISHED BY THE SIVEST QUALITY MANAGEMENT SYSTEM WHICH HAS BEEN CERTIFIED ISO 9001:2015 COMPLIANT