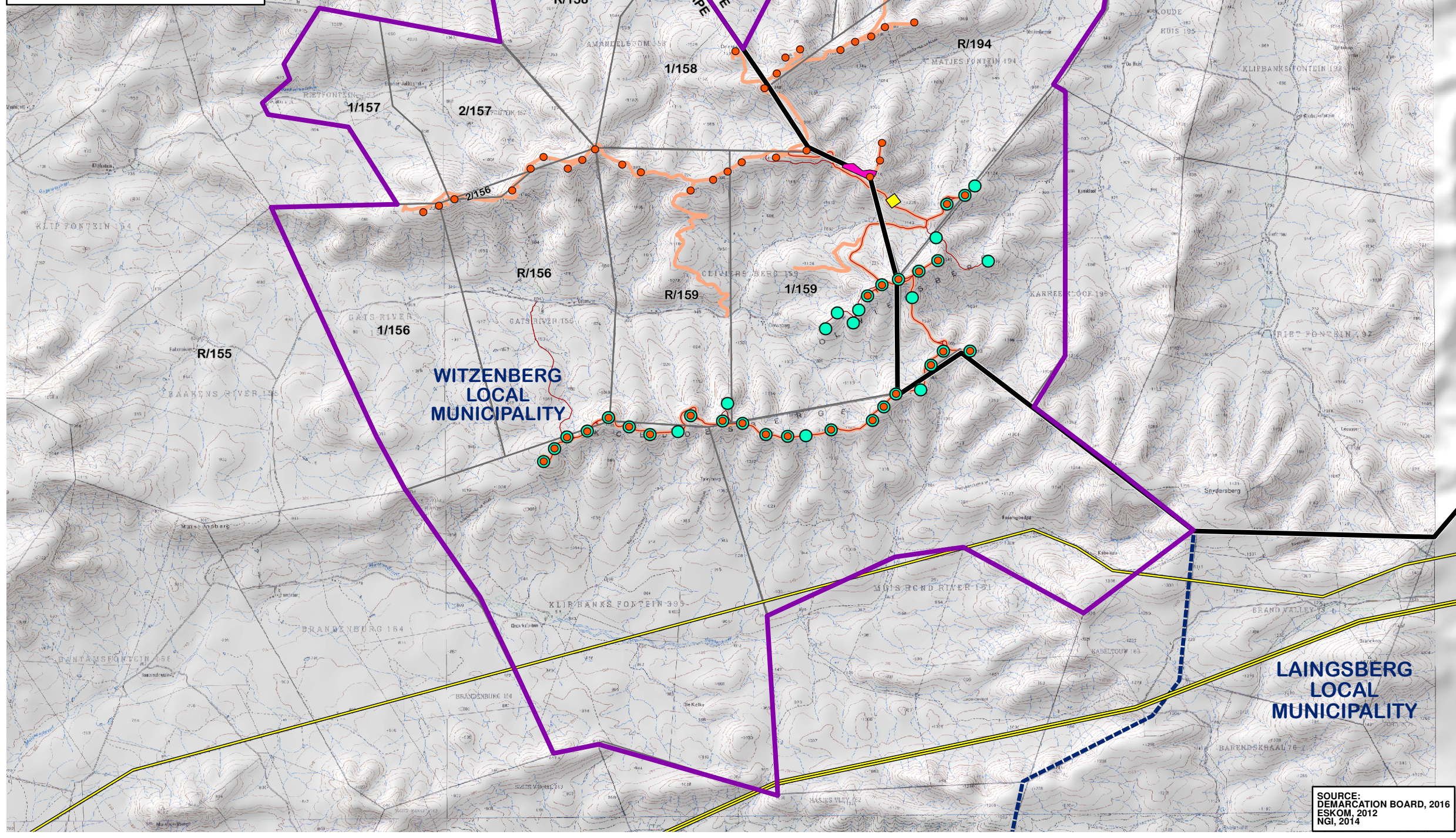



- Authorised WEF Components**
- Turbine Positions
  - Substation Site
  - Construction Camp
  - Access Roads
- Proposed WEF Components**
- Turbine Positions
  - Substation Site
  - Construction Camp
  - Access Roads


**PROPOSED PART 2  
AMENDMENT TO THE  
AUTHORISED 325MW  
KUDUSBERG WEF  
NEAR MATJIESFONTEIN,  
WESTERN AND NORTHERN  
CAPE PROVINCES  
KUDUSBERG WIND ENERGY  
FACILITY:  
LAYOUT COMPARISON**

- Legend**
- Provincial Boundaries
  - Local Municipal Boundaries
  - Main Roads
  - Existing High Voltage Power Lines (>=400kV)
  - Rivers
  - Farm Portions
  - Authorised Kudusberg WEF Application Site





0 1 2  
Kilometers



**SiVEST**

**ENVIRONMENTAL DIVISION**  
12 AUTUMN ROAD  
RIVONIA, 2128  
JOHANNESBURG  
SOUTH AFRICA

Phone: +27 11 798 0600  
Fax: +27 11 803 7272  
e-mail: info@sivest.co.za

<b>Project No</b> 16235	<b>Prepared By</b> KLS	<b>Date</b> 26/10/2020
<b>Map Ref No</b> 16235/W04	<b>Revision</b> 1	<b>Date</b> 19/01/2021

"COPYRIGHT IS VESTED IN SIVEST IN TERMS OF THE COPYRIGHT ACT (ACT 98 OF 1978) AND NO USE OR REPRODUCTION OR DUPLICATION THEREOF MAY OCCUR WITHOUT THE WRITTEN CONSENT OF THE AUTHOR"

THIS MAP HAS BEEN PREPARED UNDER THE CONTROLS ESTABLISHED BY THE SIVEST QUALITY MANAGEMENT SYSTEM WHICH HAS BEEN CERTIFIED ISO 9001:2015 COMPLIANT

SOURCE:  
DEMARCATION BOARD, 2016  
ESKOM, 2012  
NGI, 2014