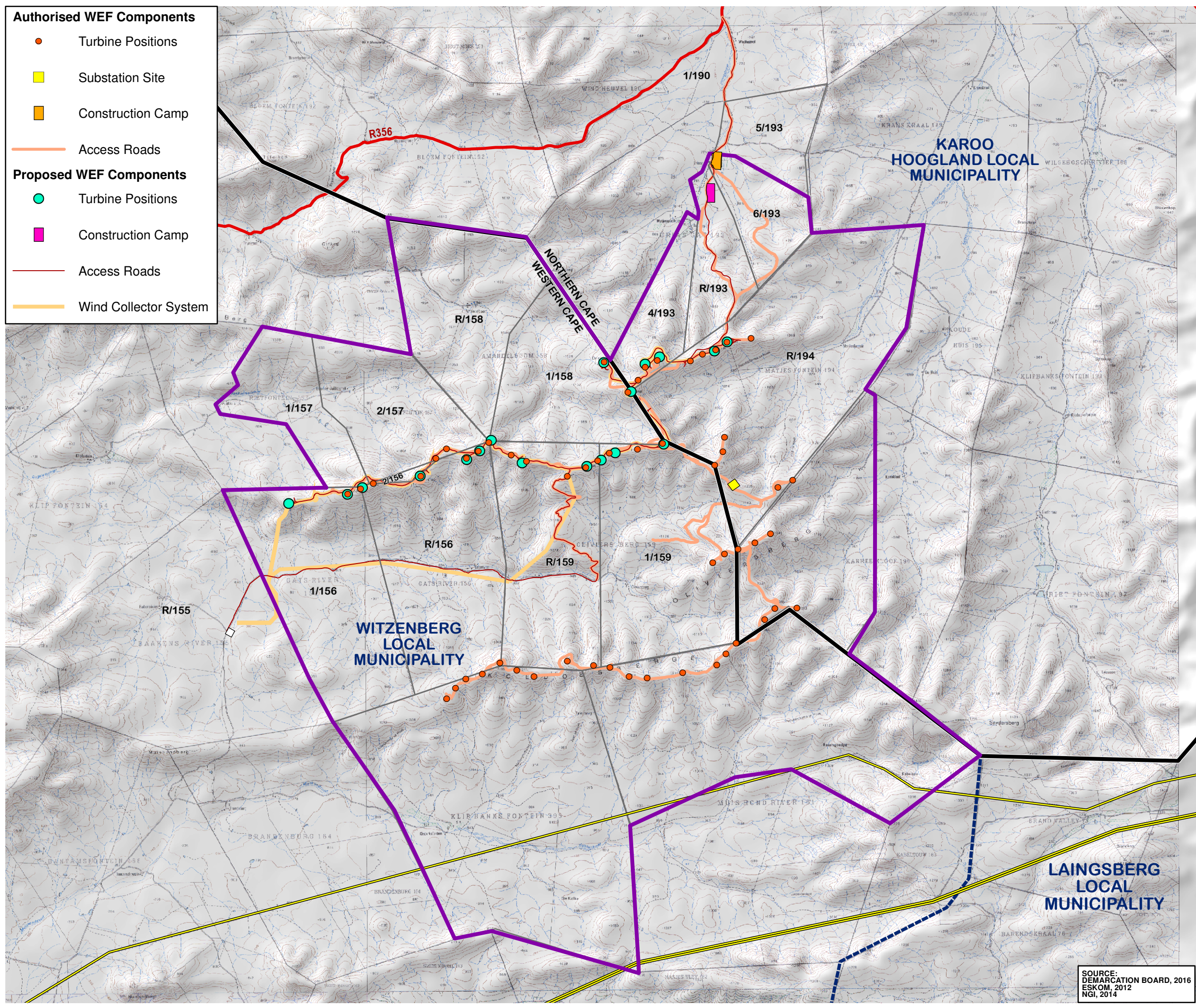


- Authorised WEF Components**
- Turbine Positions
 - Substation Site
 - Construction Camp
 - Access Roads
- Proposed WEF Components**
- Turbine Positions
 - Construction Camp
 - Access Roads
 - Wind Collector System

**PROPOSED PART 2
AMENDMENT TO THE
AUTHORISED 325MW
KUDUSBERG WEF
NEAR MATJIESFONTEIN,
WESTERN AND NORTHERN
CAPE PROVINCES
OYA WIND ENERGY FACILITY:
LAYOUT COMPARISON**

- Legend**
- Provincial Boundaries
 - Local Municipal Boundaries
 - Main Roads
 - Existing High Voltage Power Lines (>=400kV)
 - Rivers
 - Farm Portions
 - Authorised Kudusberg WEF Application Site
 - Proposed Oya Energy Substation (Subject to separate EA process)



N

Kilometers

ENVIRONMENTAL DIVISION
12 AUTUMN ROAD
RIVONIA, 2128
JOHANNESBURG
SOUTH AFRICA
Phone: +27 11 798 0600
Fax: +27 11 803 7272
e-mail: info@sivest.co.za

Project No 16235	Prepared By KLS	Date 26/10/2020
Map Ref No 16235/W05	Revision 1	Date 19/01/2021

"COPYRIGHT IS VESTED IN SIVEST IN TERMS OF THE COPYRIGHT ACT (ACT 98 OF 1978) AND NO USE OR REPRODUCTION OR DUPLICATION THEREOF MAY OCCUR WITHOUT THE WRITTEN CONSENT OF THE AUTHOR"

THIS MAP HAS BEEN PREPARED UNDER THE CONTROLS ESTABLISHED BY THE SIVEST QUALITY MANAGEMENT SYSTEM WHICH HAS BEEN CERTIFIED ISO 9001:2015 COMPLIANT

SOURCE:
DEMARCATION BOARD, 2016
ESKOM, 2012
NGI, 2014