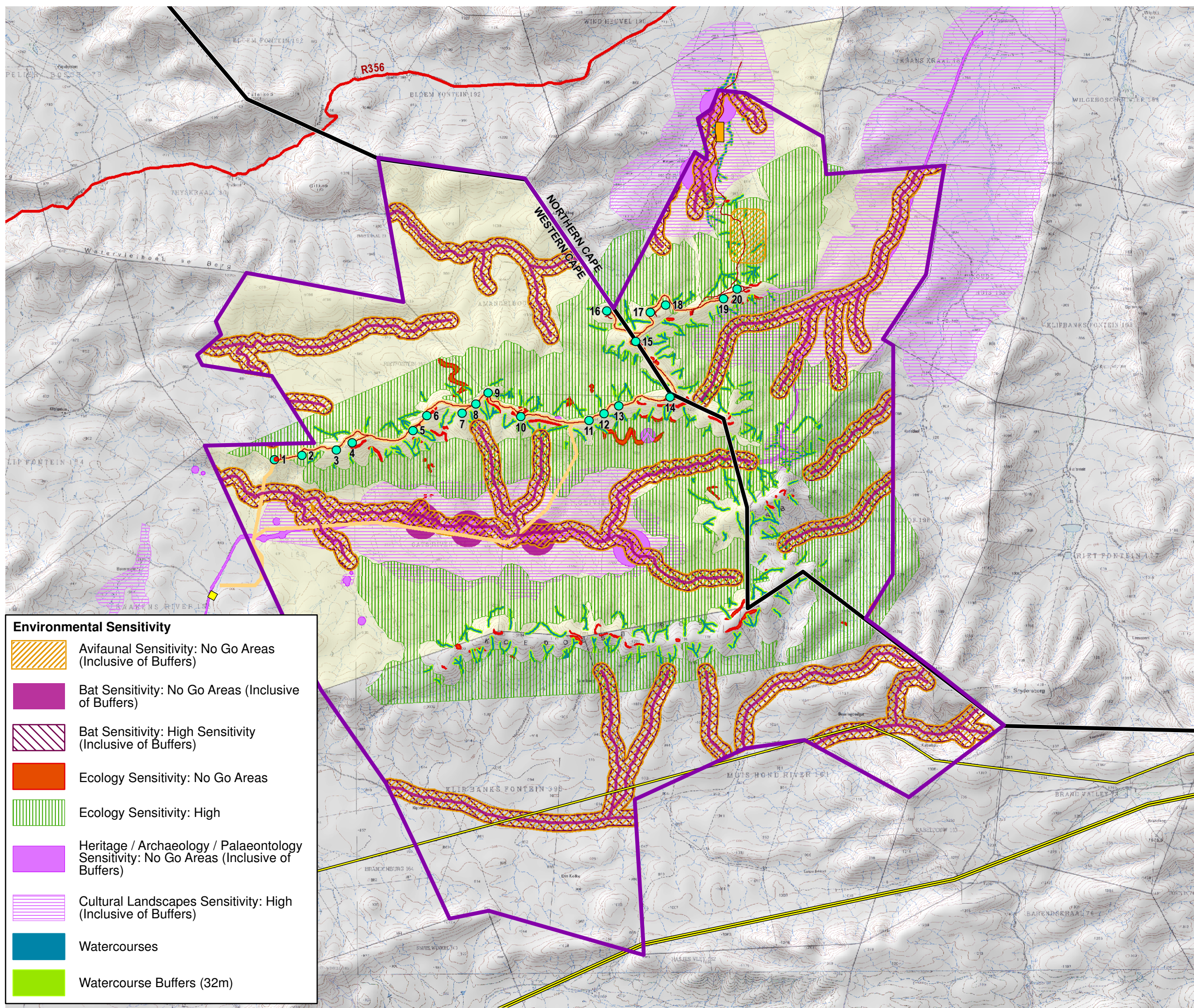


**PROPOSED PART 2
AMENDMENT TO THE
AUTHORISED 325MW
KUDUSBERG WEF**
**NEAR MATJIESFONTEIN,
WESTERN AND NORTHERN
CAPE PROVINCES**
**OYA WIND ENERGY FACILITY:
PRELIMINARY SENSITIVITY
OVERLAY**



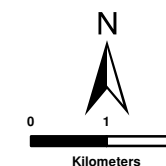
Legend

- Provincial Boundaries
- Main Roads
- Existing High Voltage Power Lines (>=400kV)
- Rivers
- Authorised Kudusberg WEF Application Site
- Oya WEF Project Area
- Proposed Oya Energy Substation (Subject to separate EA process)
- Proposed WEF Components**
- Turbine Positions
- Construction Camp
- Access Roads
- Wind Collector System

Environmental Sensitivity

- Avifaunal Sensitivity: No Go Areas (Inclusive of Buffers)
- Bat Sensitivity: No Go Areas (Inclusive of Buffers)
- Bat Sensitivity: High Sensitivity (Inclusive of Buffers)
- Ecology Sensitivity: No Go Areas
- Ecology Sensitivity: High
- Heritage / Archaeology / Palaeontology Sensitivity: No Go Areas (Inclusive of Buffers)
- Cultural Landscapes Sensitivity: High (Inclusive of Buffers)
- Watercourses
- Watercourse Buffers (32m)

SOURCE:
DEMARCATION BOARD, 2016
ESKOM, 2012
NGI, 2014



ENVIRONMENTAL DIVISION
12 AUTUMN ROAD
RIVONIA, 2128
JOHANNESBURG
SOUTH AFRICA
Phone: +27 11 798 0600
Fax: +27 11 803 7272
e-mail: info@sivest.co.za

Project No 16235	Prepared By KLS	Date 13/11/2020
Map Ref No 16235/W09	Revision 0	Date

"COPYRIGHT IS VESTED IN SIVEST IN TERMS OF THE COPYRIGHT ACT (ACT 98 OF 1978) AND NO USE OR REPRODUCTION OR DUPLICATION THEREOF MAY OCCUR WITHOUT THE WRITTEN CONSENT OF THE AUTHOR"

THIS MAP HAS BEEN PREPARED UNDER THE CONTROLS ESTABLISHED BY THE SIVEST QUALITY MANAGEMENT SYSTEM WHICH HAS BEEN CERTIFIED ISO 9001:2015 COMPLIANT