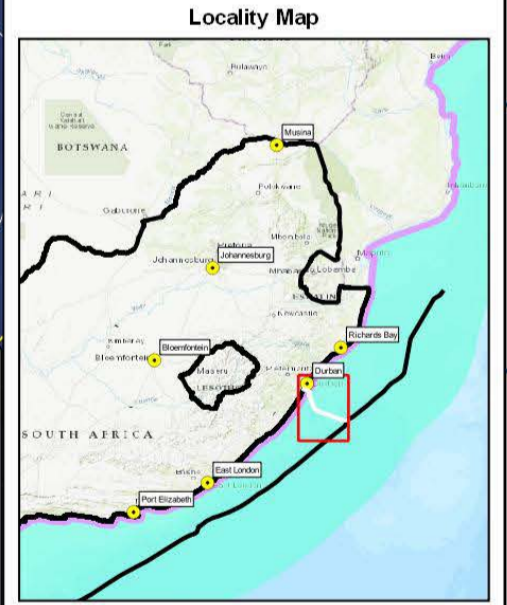


**Legend (Main map)**

- Marine alignment
- Offshore Trunk line
- Bathymetry - RSA (SRTM100)**
- 1000m intervals
- 200m intervals

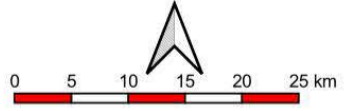
**Legend (Locality map)**

- Marine alignment
- Offshore Trunk line
- Territorial Waters of 12 nautical miles
- Exclusive Economic Zone (EEZ) of 200 nautical miles
- National boundary



Mapping and layout by  
  
 Spatial Systems Solutions

For Giles Churchill



1:425000  
 when printed at A3 (420 x 297 mm)  
 Date of print: 08 Mar 2021

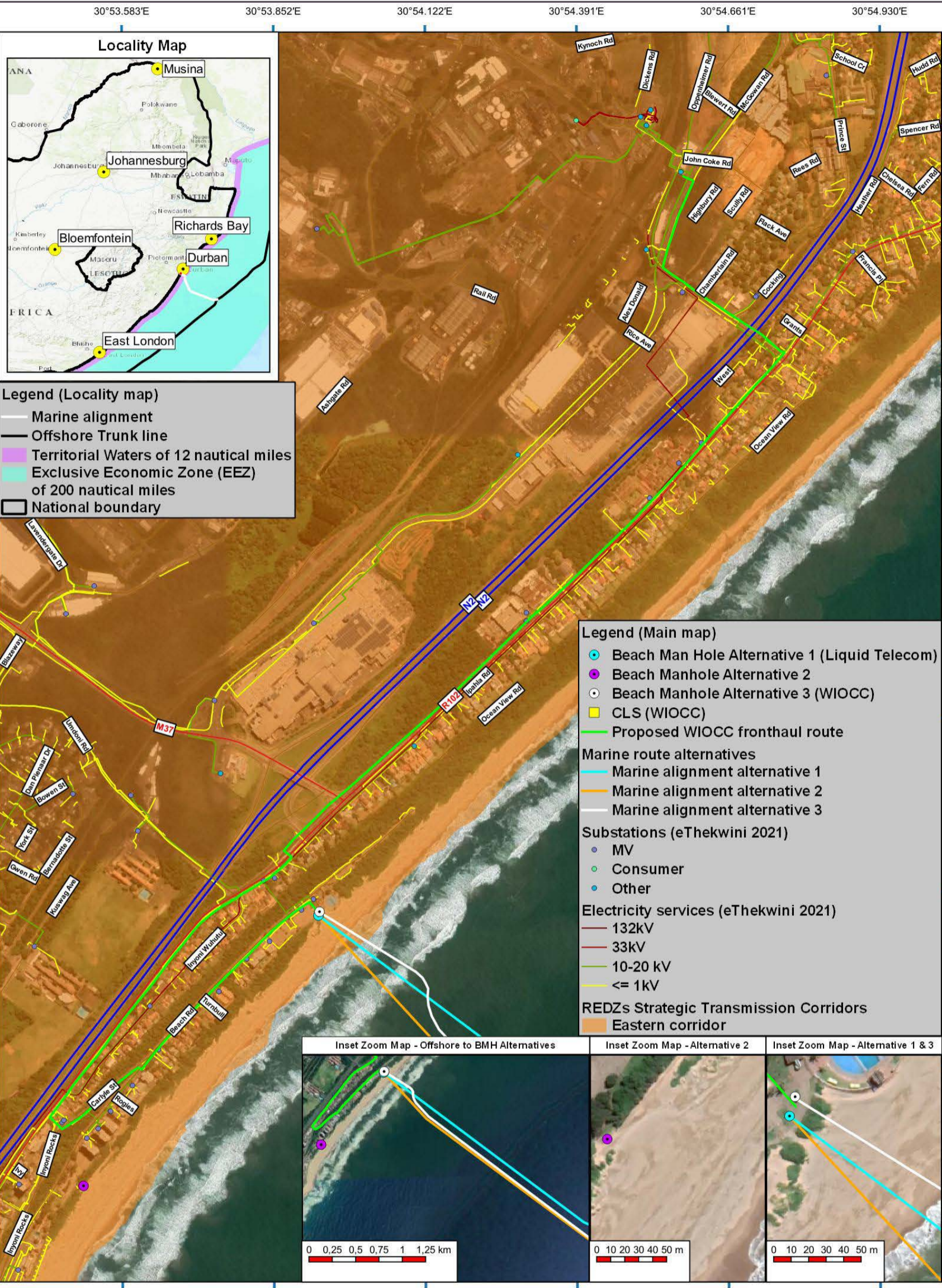
Co-Ordinate system  
 Projection: Unprojected (Geographic)  
 Ellipsoid: WGS84  
 Units: Decimal Degrees

Distance notes  
 1 nautical mile = 1.852km  
 1km = 0.539957nmi

**2AFRICA/GERA (East) Cable System**

**Amanzimtoti**

**Offshore Cable Alignment from trunkline, with Bathymetry contours (SRTM)**



Mapping and layout by  
 Technologies  
 Spatial Systems Solutions

For Giles Churchill  
 acer  
 AFRICA

0 100 200 300 400 500 m  
 1:10000  
 when printed at A3 (420 x 297 mm)  
 Date of print: 26 Apr 2021

Co-Ordinate system  
 Projection: Transverse Mercator  
 Datum: Hartbeeshoek 1994  
 Ellipsoid: WGS84  
 Meridian: Lo31°  
 Units: Metres

Distance notes  
 1 nautical mile = 1.852km  
 1 km = 0.539957 nmi

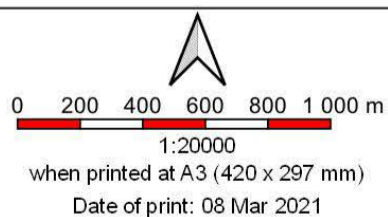
**2AFRICA/GERA (East)  
 Cable System**  
**Amanzintoti**  
**Onshore alignment  
 with alternatives  
 and Power Producers**



Mapping and layout by



For Giles Churchill



Co-Ordinate system  
Projection: Transverse Mercator  
Datum: Hartbeeshoek 1994  
Ellipsoid: WGS84  
Meridian: Lo31°  
Units: Metres

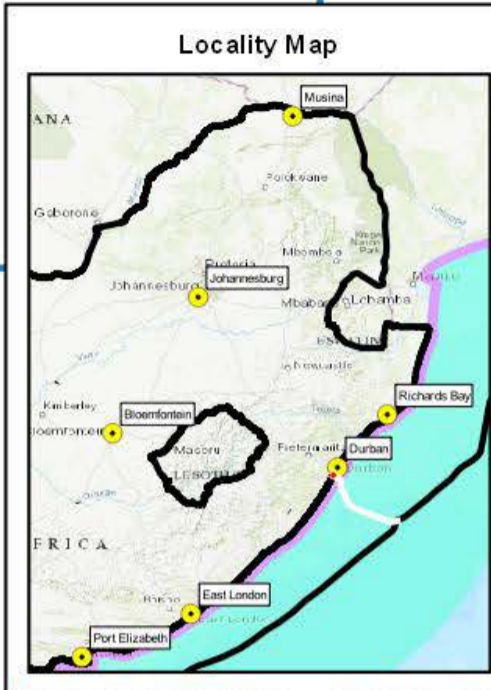
Distance notes  
1 nautical mile = 1.852km  
1 km = 0.539957 nmi

**2AFRICA/GERA (East)  
Cable System**

**Amanzimtoti**

**Project locality at  
Amanzimtoti,  
KwaZulu-Natal**

30°53.447'E      30°53.919'E      30°54.390'E      30°54.862'E



- Legend (Locality map)**
- Marine alignment
  - Offshore Trunk line
  - Territorial Waters of 12 nautical miles
  - Exclusive Economic Zone (EEZ) of 200 nautical miles
  - National boundary



- Legend (Main map)**
- Beach Man Hole Alternative 1 (Liquid Telecom)
  - Beach Manhole Alternative 2
  - Beach Manhole Alternative 3 (WIOCC)
  - CLS (WIOCC)
  - Proposed WIOCC fronthaul route
  - Marine route alternatives
    - Marine alignment alternative 1
    - Marine alignment alternative 2
    - Marine alignment alternative 3
  - Rivers (eThekweni 2019)
  - Wetlands (NFEPA 2011)

30°1.098'S  
30°1.569'S  
30°2.041'S  
30°2.512'S  
30°2.984'S

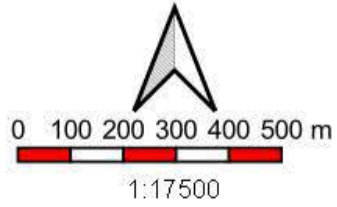
30°1.098'S  
30°1.569'S  
30°2.041'S  
30°2.512'S  
30°2.984'S

30°53.447'E      30°53.919'E      30°54.390'E      30°54.862'E

Mapping and layout by



For Giles Churchill



when printed at A4 (297 x 210 mm)  
Date of print: 08 Mar 2021

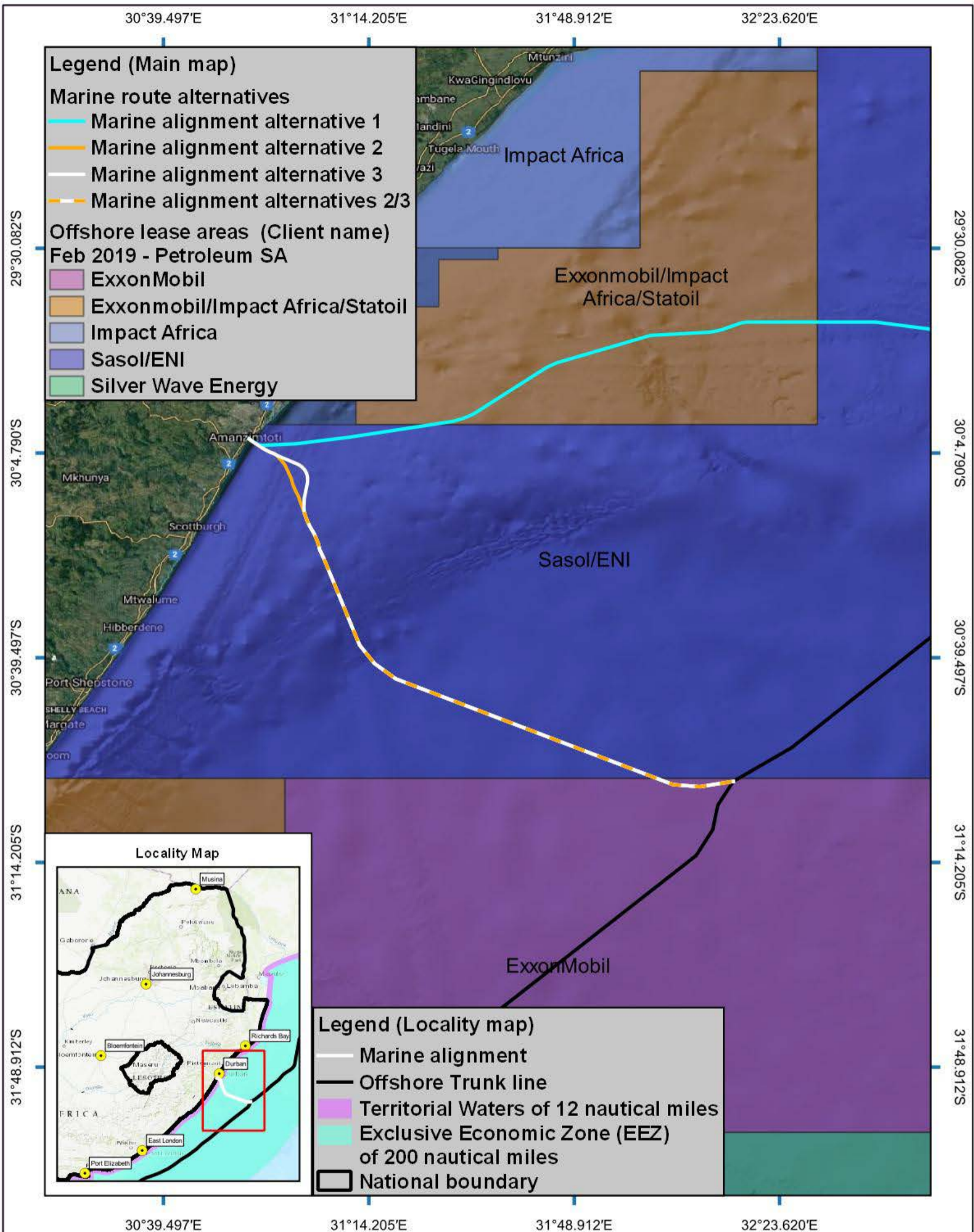
Co-Ordinate system  
Projection: Unprojected  
(Geographic)  
Ellipsoid: WGS84  
Units: Decimal Degrees

Distance notes  
1 nautical mile = 1.852km  
1km = 0.539957nmi

**2AFRICA/GERA (East) Cable System**

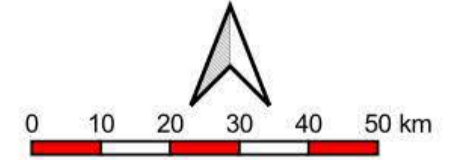
**Amanzimtoti**

**Onshore alignment with wetlands, rivers, alternatives and other points of interest**



Mapping and layout by  
  
 Spatial Systems Solutions  
 0812212224, 0812212224, 0812212224

For Giles Churchill

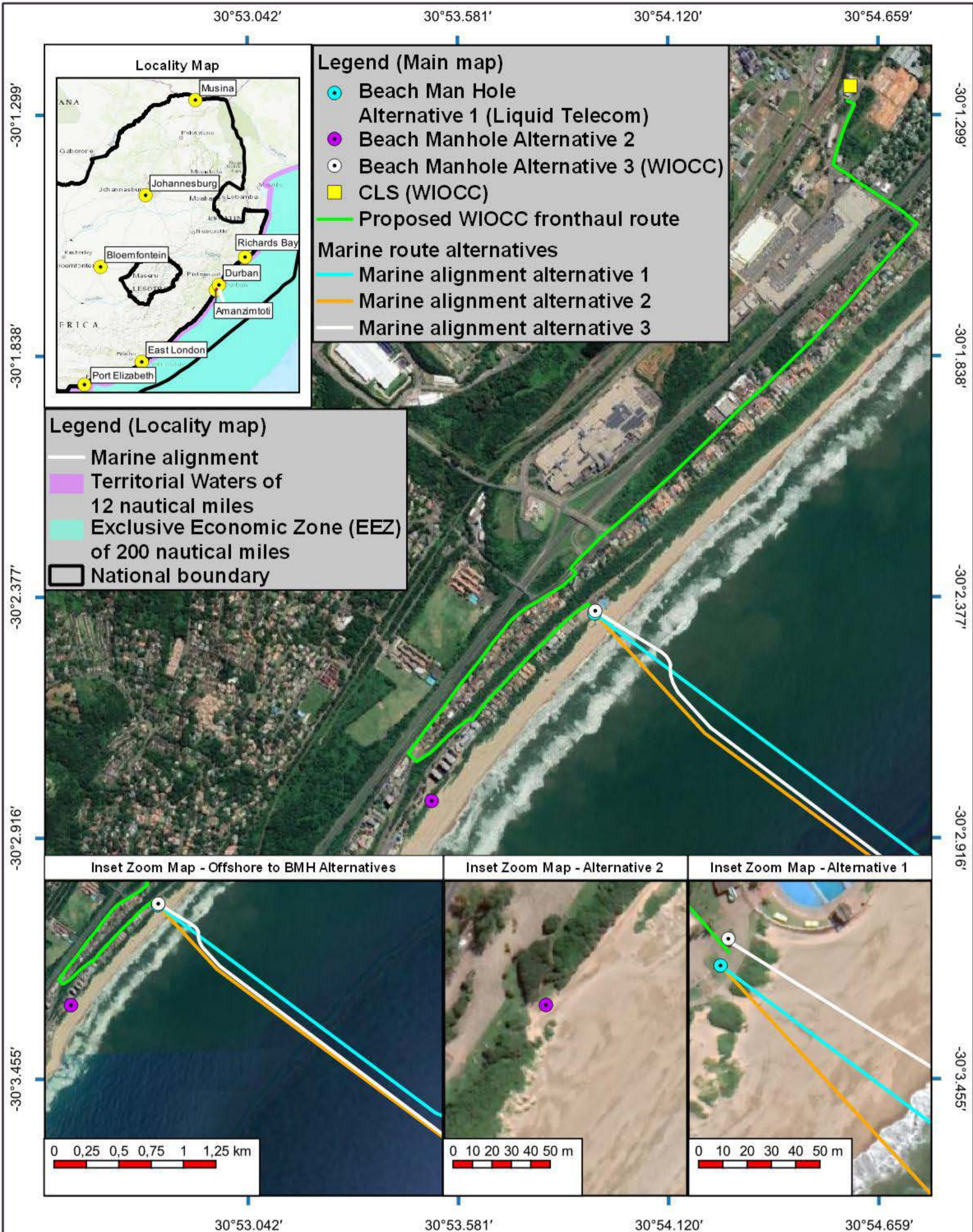


1:1000000  
 when printed at A4 (297 x 210 mm)  
 Date of print: 08 Mar 2021

Co-Ordinate system  
 Projection: Unprojected  
 (Geographic)  
 Ellipsoid: WGS84  
 Units: Decimal Degrees

Distance notes  
 1 nautical mile = 1.852km  
 1km = 0.539957nmi

**2AFRICA/GERA (East)**  
**Amanzimtoti**  
**Offshore alignment with Offshore Lease Areas**



Mapping and layout by **Technologies** For Giles Churchill

**acer** AFRICA

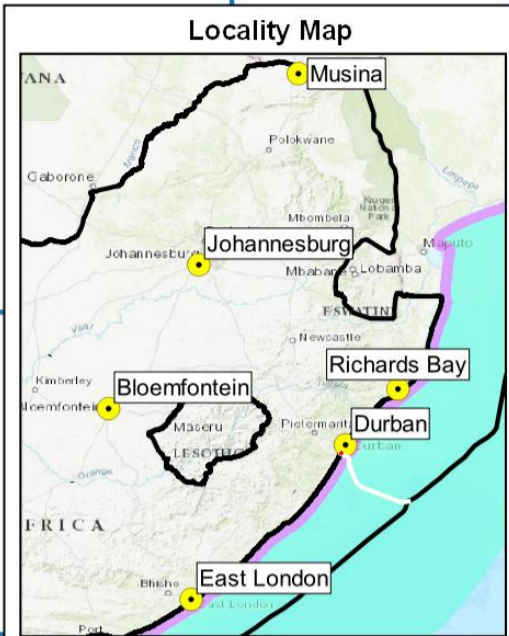
Co-Ordinate system: 2AFRICA/GERA (East) Cable System  
 Amanzimtoti

Onshore alignment with alternatives, landing point and other points of interest

Co-Ordinate system: Projection: Transverse Mercator  
 Datum: Hartebeeshoek 1994  
 Ellipsoid: WGS84  
 Meridian: Lo31°  
 Units: Metres

Distance notes  
 1 nautical mile = 1.852km  
 1km = 0.539957nmi

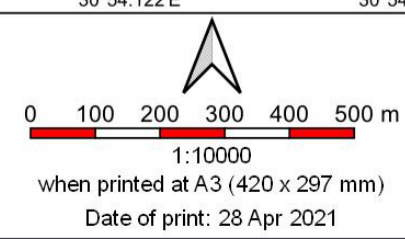
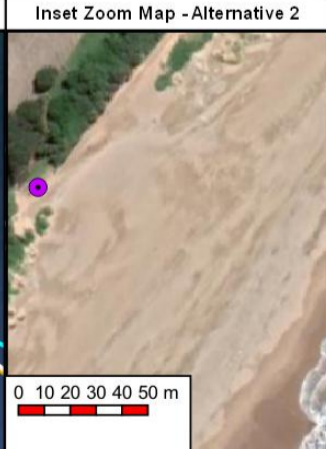
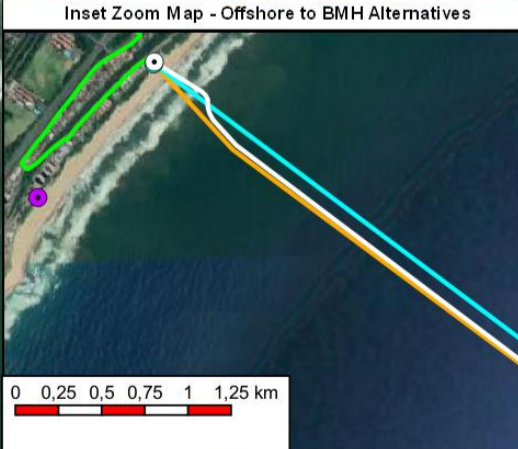
0 100 200 300 400 500 m  
 1:20000  
 when printed at A4 (297 x 210 mm)  
 Date of print: 08 Mar 2021



- Legend (Locality map)**
- Marine alignment
  - Offshore Trunk line
  - Territorial Waters of 12 nautical miles
  - Exclusive Economic Zone (EEZ) of 200 nautical miles
  - National boundary



- Legend (Main map)**
- Beach Man Hole Alternative 1 (Liquid Telecom)
  - Beach Man Hole Alternative 2
  - Beach Man Hole Alternative 3 (WIOCC)
  - CLS (WIOCC)
  - Proposed WIOCC fronthaul route
  - Marine route alternatives**
    - Marine alignment alternative 1
    - Marine alignment alternative 2
    - Marine alignment alternative 3
  - Rivers (eThekweni 2019)
  - ▨ Wetlands (NFEPA 2011)
  - Critical Biodiversity Areas (CBA)**
    - CBA: Irreplaceable
  - Other sensitivity data**
    - ▨ eThekweni DMOSS (2018)

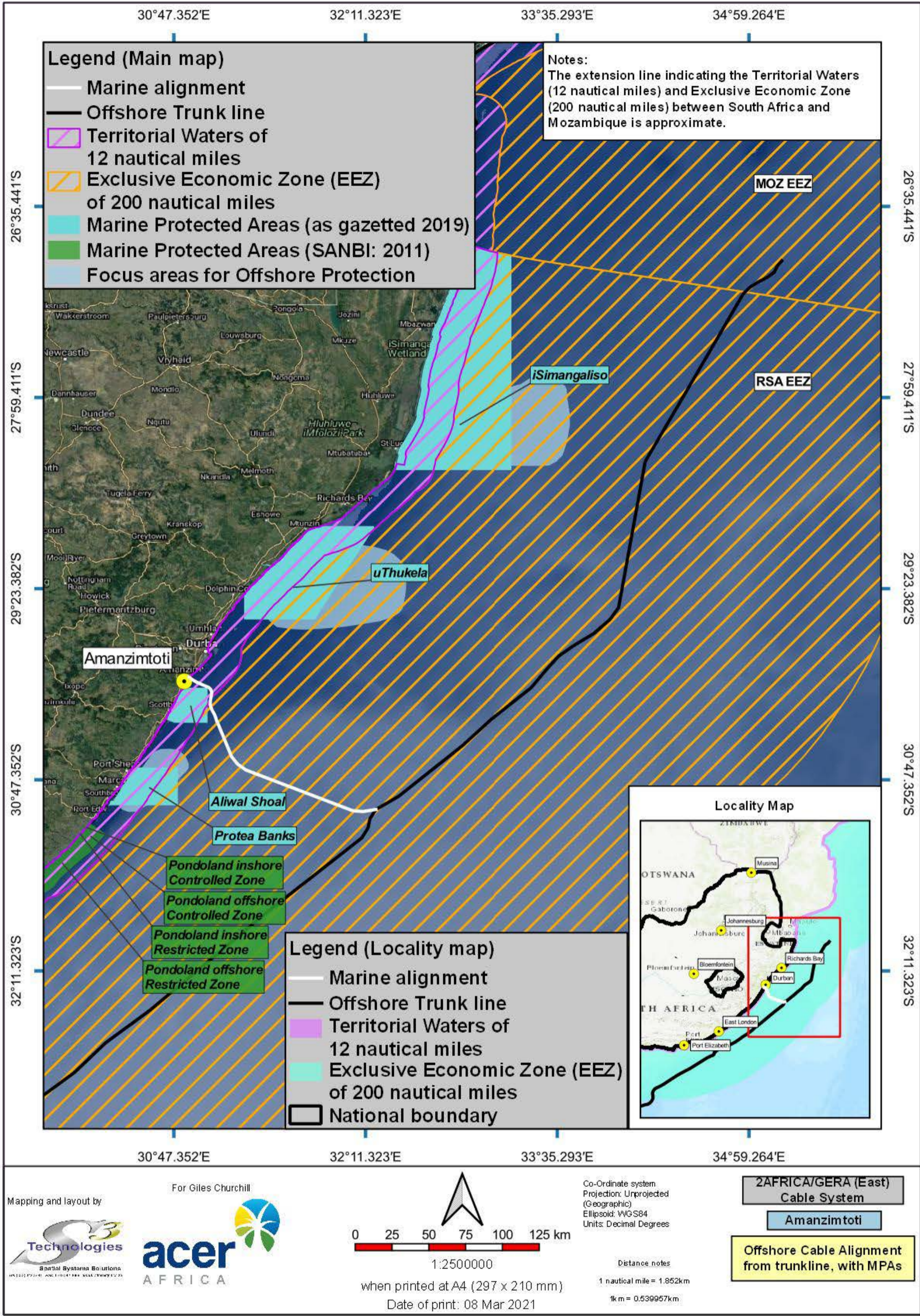


Co-Ordinate system  
 Projection: Transverse Mercator  
 Datum: Hatlebeeshoek 1994  
 Ellipsoid: WGS84  
 Meridian: Lo31°  
 Units: Metres

Distance notes  
 1 nautical mile = 1.852km  
 1 km = 0.539957 nmi

**2AFRICA/GERA (East)  
 Cable System**  
**Amanzimtoti**  
**Onshore alignment  
 with alternatives  
 and Sensitivity data**





30°53.582'

30°54.121'

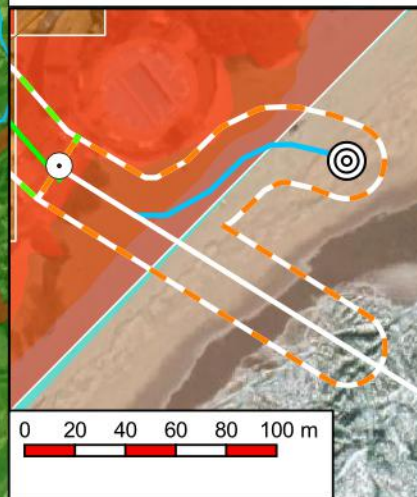
30°54.660'

30°55.199'

### Legend (Main map)

- Proposed BMH (WIOCC)
  - CLS (WIOCC)
  - ◎ Sea Earth plate
  - Sea Earth Route (approximate)
  - Proposed WIOCC fronthaul route
  - Marine alignment
- Construction footprint**
- Offshore to BMH
  - BMH to CLS (WIOCC)
- Sensitivities**
- Rivers (eThekweni 2019)
  - Wetlands (NFEPA 2011)
- SANBI Vegmap (2018 Beta)**
- KwaZulu-Natal Coastal Belt Grassland
  - Northern Coastal Forest
  - Subtropical Alluvial Vegetation
  - Subtropical Seashore Vegetation

### Inset Zoom Map - Alternative 1 & 3



-30°0.761'

-30°0.761'

-30°1.300'

-30°1.300'

-30°1.839'

-30°1.839'

-30°2.378'

-30°2.378'

-30°2.917'

-30°2.917'

30°53.582'

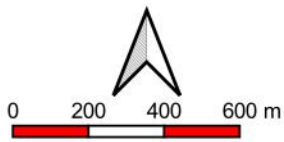
30°54.121'

30°54.660'

30°55.199'

Mapping and layout by

For Giles Churchill



when printed at A4 (297 x 210 mm)

Date of print: 20 Jul 2021

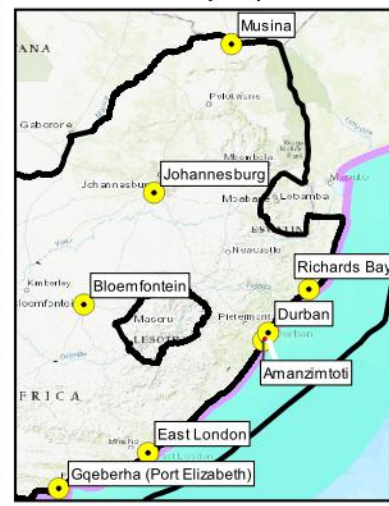
Co-Ordinate system  
Projection: Transverse Mercator  
Datum: Hartebeeshoek 1994  
Ellipsoid: WGS84  
Meridian: Lo31°  
Units: Metres

#### Distance notes

1 nautical mile = 1.852km

1km = 0.539957km

### Locality Map



**2AFRICA/GERA (East) Cable System**

**Amanzimtoti**

**Landing Site with Beach Man Hole Position, Front Haul Alignment, Sensitivities and Construction footprint**

30°53.932'

30°53.959'

30°53.986'

30°54.013'

-30°2.351'

-30°2.378'

-30°2.405'

-30°2.432'

-30°2.459'

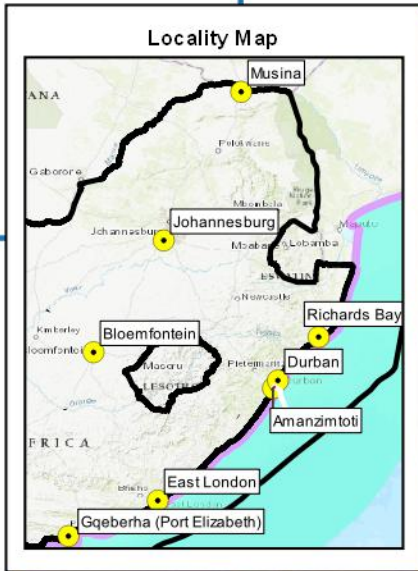
-30°2.351'

-30°2.378'

-30°2.405'

-30°2.432'

-30°2.459'



**Legend (Main map)**

- Proposed BMH (WIOCC)
- ◎ Sea Earth plate
- Sea Earth Route (approximate)
- Proposed WIOCC fronthaul route
- Marine alignment

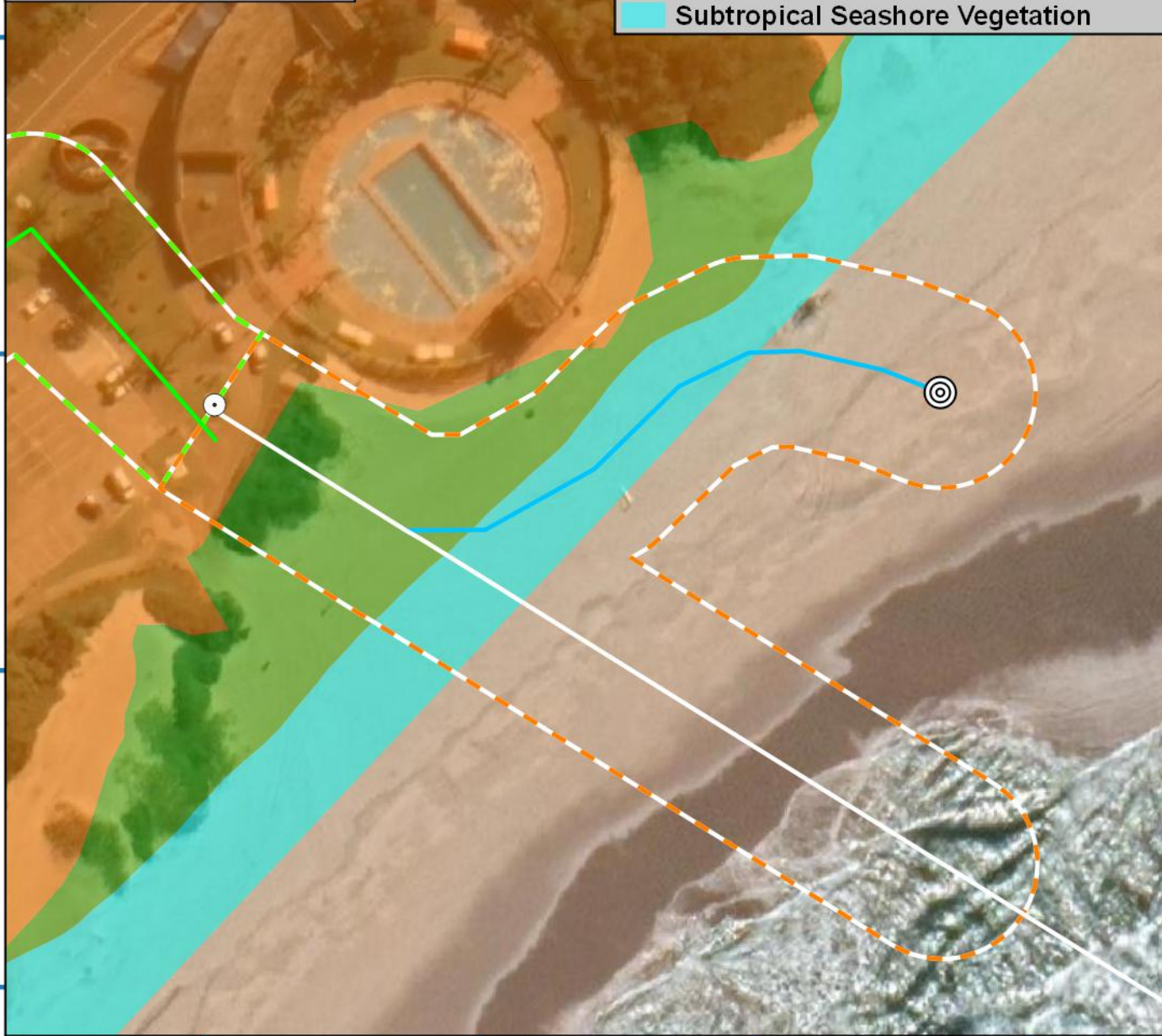
**Construction footprint**

- Offshore to BMH
- BMH to CLS (WIOCC)

**Sensitivities**

**SANBI Vegmap (2018 Beta)**

- KwaZulu-Natal Coastal Belt Grassland
- Northern Coastal Forest
- Subtropical Seashore Vegetation



30°53.932'

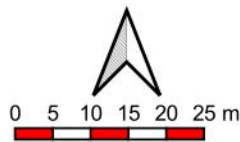
30°53.959'

30°53.986'

30°54.013'

Mapping and layout by

For Giles Churchill



when printed at A4 (297 x 210 mm)

Date of print: 20 Jul 2021

Co-Ordinate system  
 Projection: Transverse Mercator  
 Datum: Hartebeeshoek 1994  
 Ellipsoid: WGS84  
 Meridian: Lo31°  
 Units: Metres

**Distance notes**

1 nautical mile = 1.852km

1km = 0.539957km

**2AFRICA/GERA (East)  
Cable System**

**Amanzimtoti**

**Landing Site with  
Beach Man Hole Position,  
Front Haul Alignment,  
Sensitivities and  
Construction footprint**