

25°37.232'E 25°39.032'E 25°40.832'E 25°42.632'E 25°44.432'E 25°46.232'E

33°48.642'S
33°50.442'S
33°52.243'S
33°54.043'S
33°55.843'S
33°57.643'S
33°59.443'S
34°1.243'S
34°3.043'S

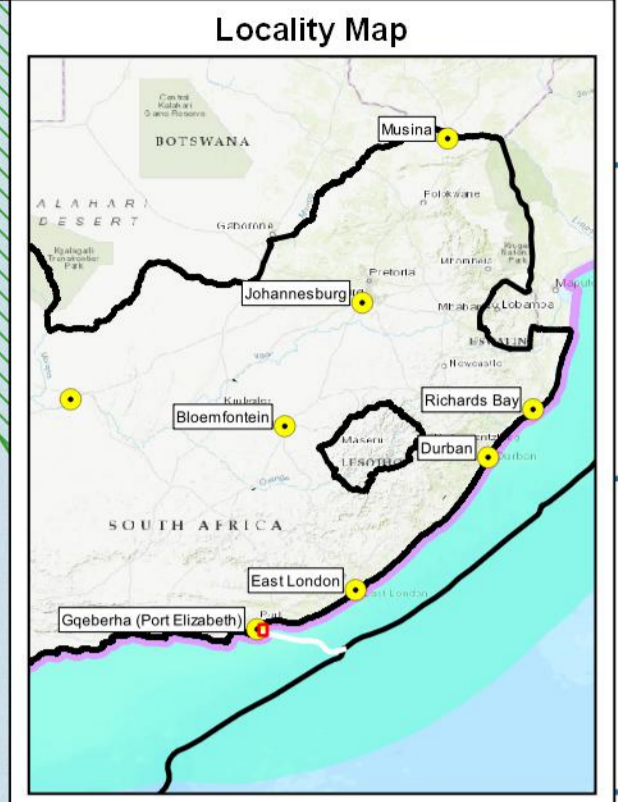
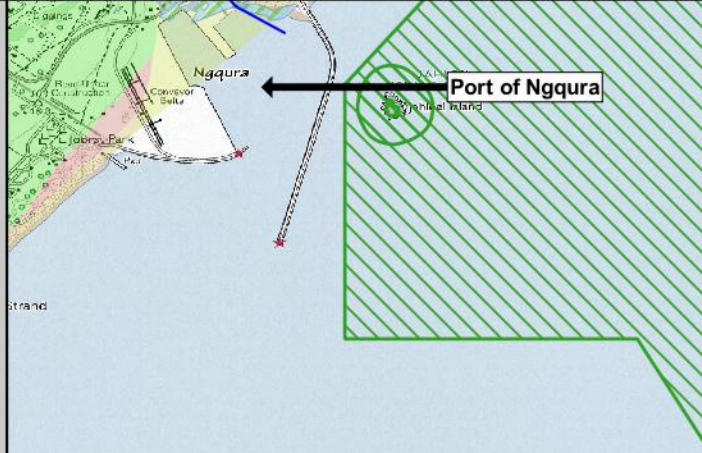
33°48.642'S
33°50.442'S
33°52.243'S
33°54.043'S
33°55.843'S
33°57.643'S
33°59.443'S
34°1.243'S
34°3.043'S

Legend (Main map)

- Beach Manhole 1
- Telkom Exchange Building
- Front Haul alignment
 - Front haul - Alternative 1 (preferred)
 - Offshore cable alignment
- Rivers (NFEPA)
- Wetlands (NFEPA 2011)
- RSA Protected Areas database (Q2 2020)

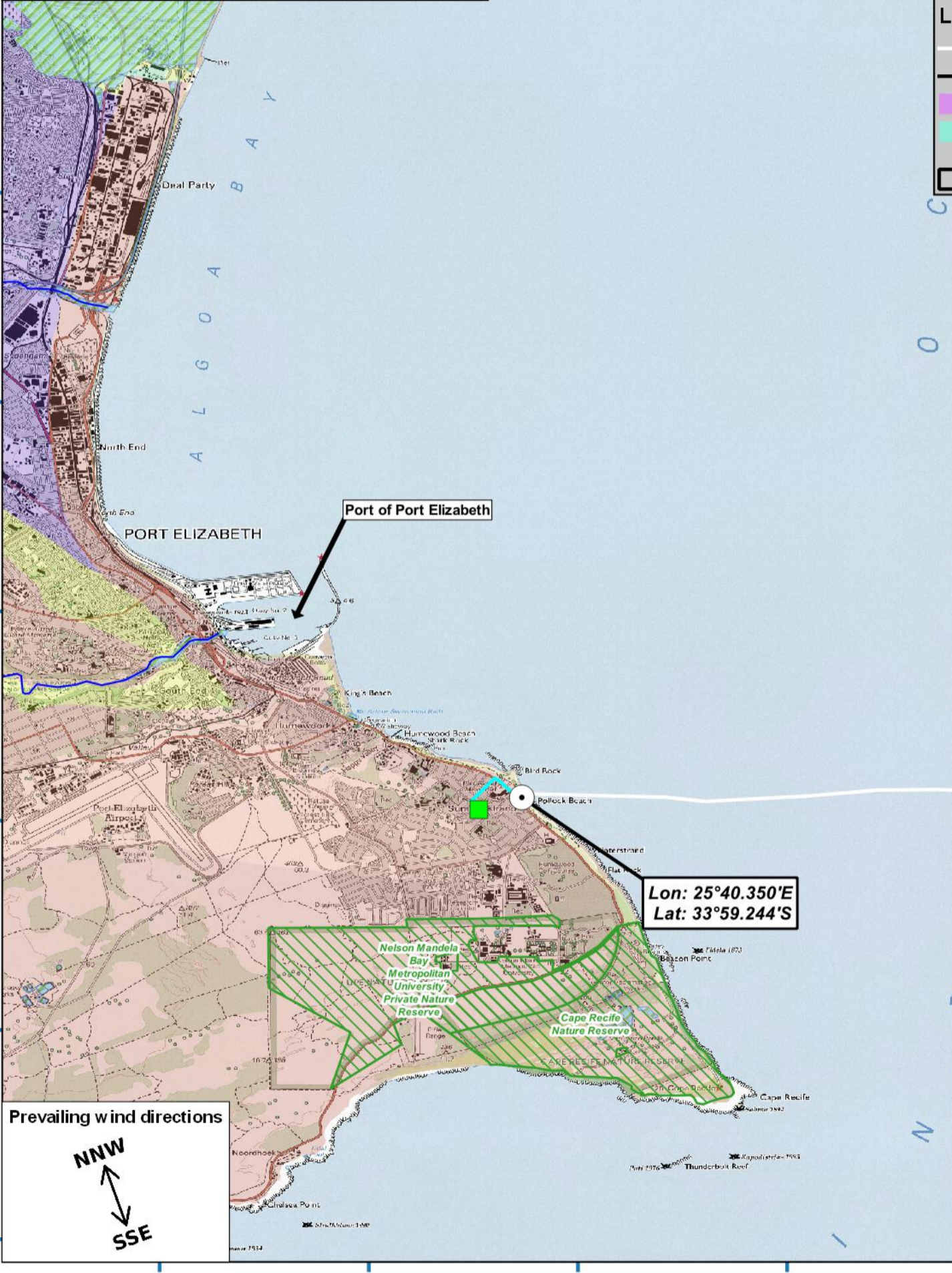
SANBI Vegmap (2018 Beta)

- Albany Alluvial Vegetation
- Algoa Sandstone Fynbos
- Bethelsdorp Bontveld
- Cape Seashore Vegetation
- Grassridge Bontveld
- Motherwell Karroid Thicket
- Non-terrestrial (Estuarine Functional Zone)
- St Francis Dune Thicket
- Sundays Valley Thicket



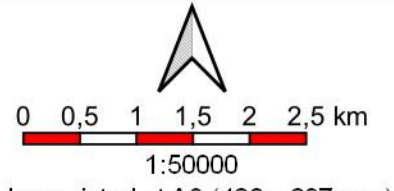
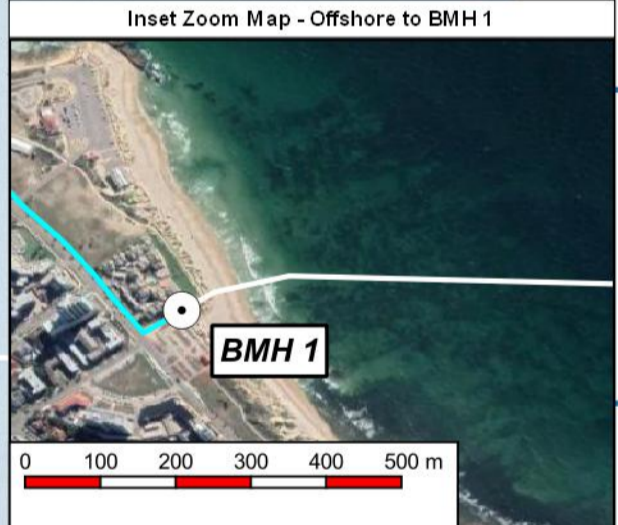
Legend (Locality map)

- Offshore cable alignment
- Offshore Trunk line
- Territorial Waters of 12 nautical miles
- Exclusive Economic Zone (EEZ) of 200 nautical miles
- National boundary



Prevailing wind directions

Lon: 25°40.350'E
Lat: 33°59.244'S



Co-Ordinate system
Projection: Unprojected (Geographic)
Ellipsoid: WGS84
Units: Decimal Degrees
Main map grid coordinates
Degrees and Decimal Minutes
Distance notes
1 nautical mile = 1.852km
1km = 0.539957km

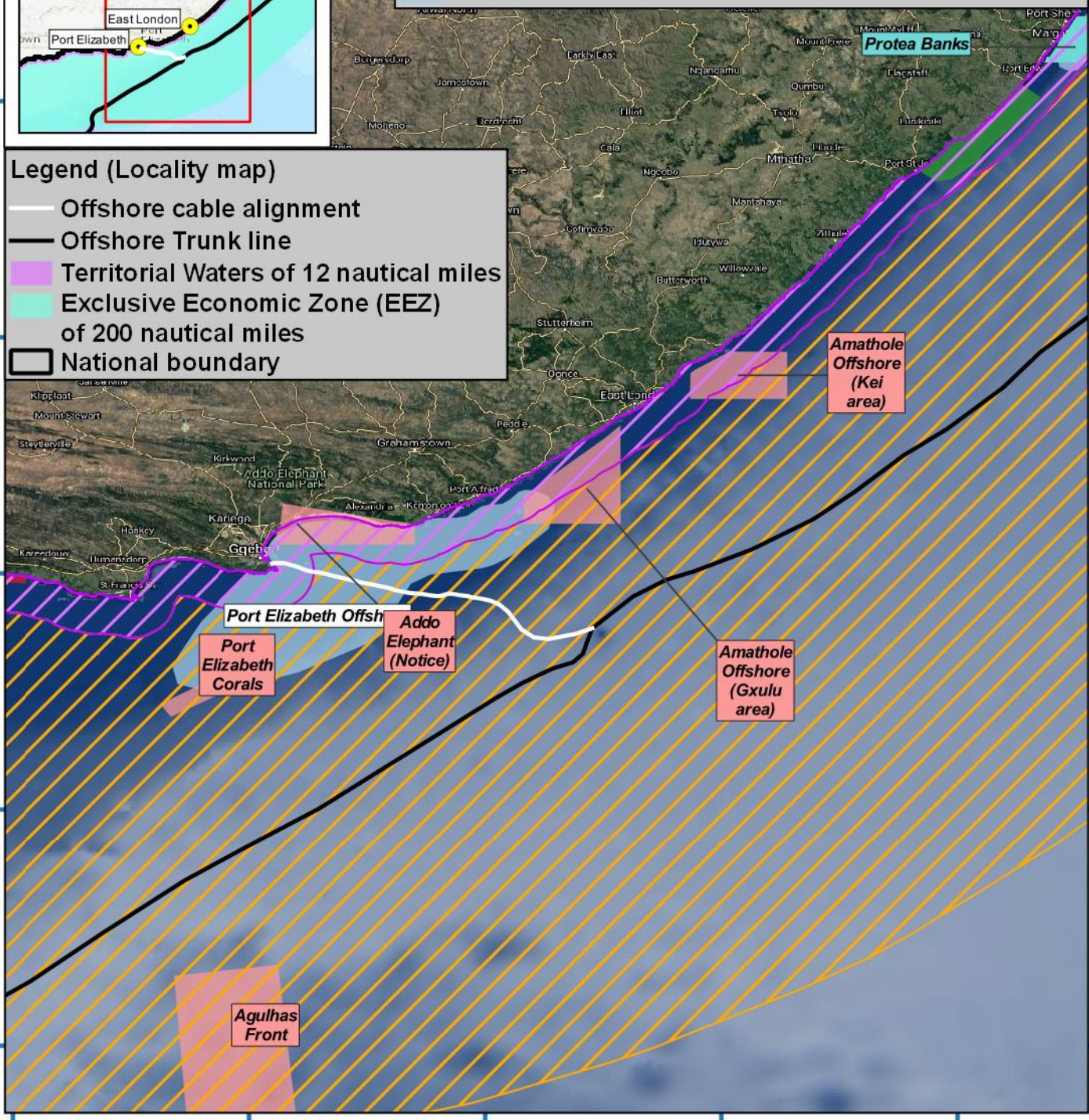
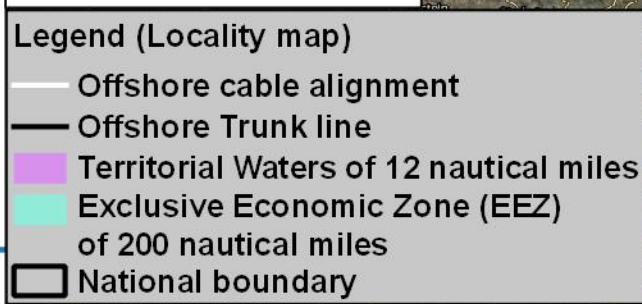
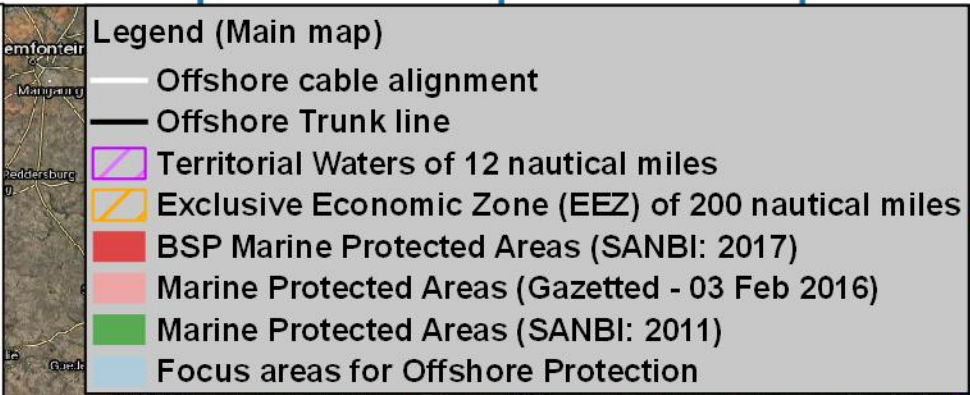
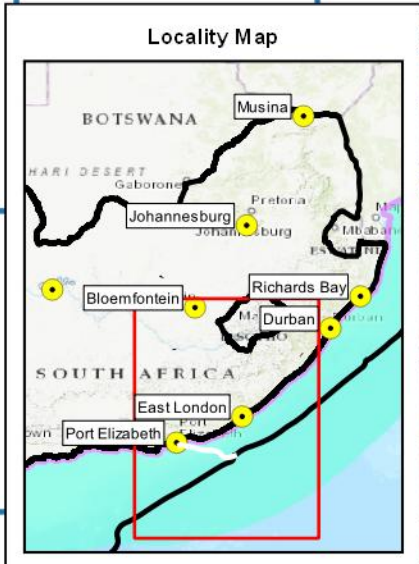
2AFRICA/GERA (East)
Port Elizabeth
Locality Map

Date of print: 27 Aug 2021

24°7'0"E 25°32'7"E 26°57'14"E 28°22'21"E 29°47'28"E

29°47'28"S
31°12'35"S
32°37'42"S
34°2'49"S
35°27'56"S
36°53'3"S

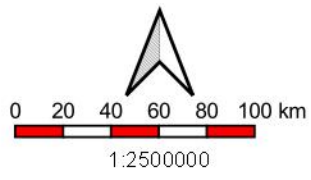
29°47'28"S
31°12'35"S
32°37'42"S
34°2'49"S
35°27'56"S
36°53'3"S



24°7'0"E 25°32'7"E 26°57'14"E 28°22'21"E 29°47'28"E

Mapping and layout by

For Giles Churchill

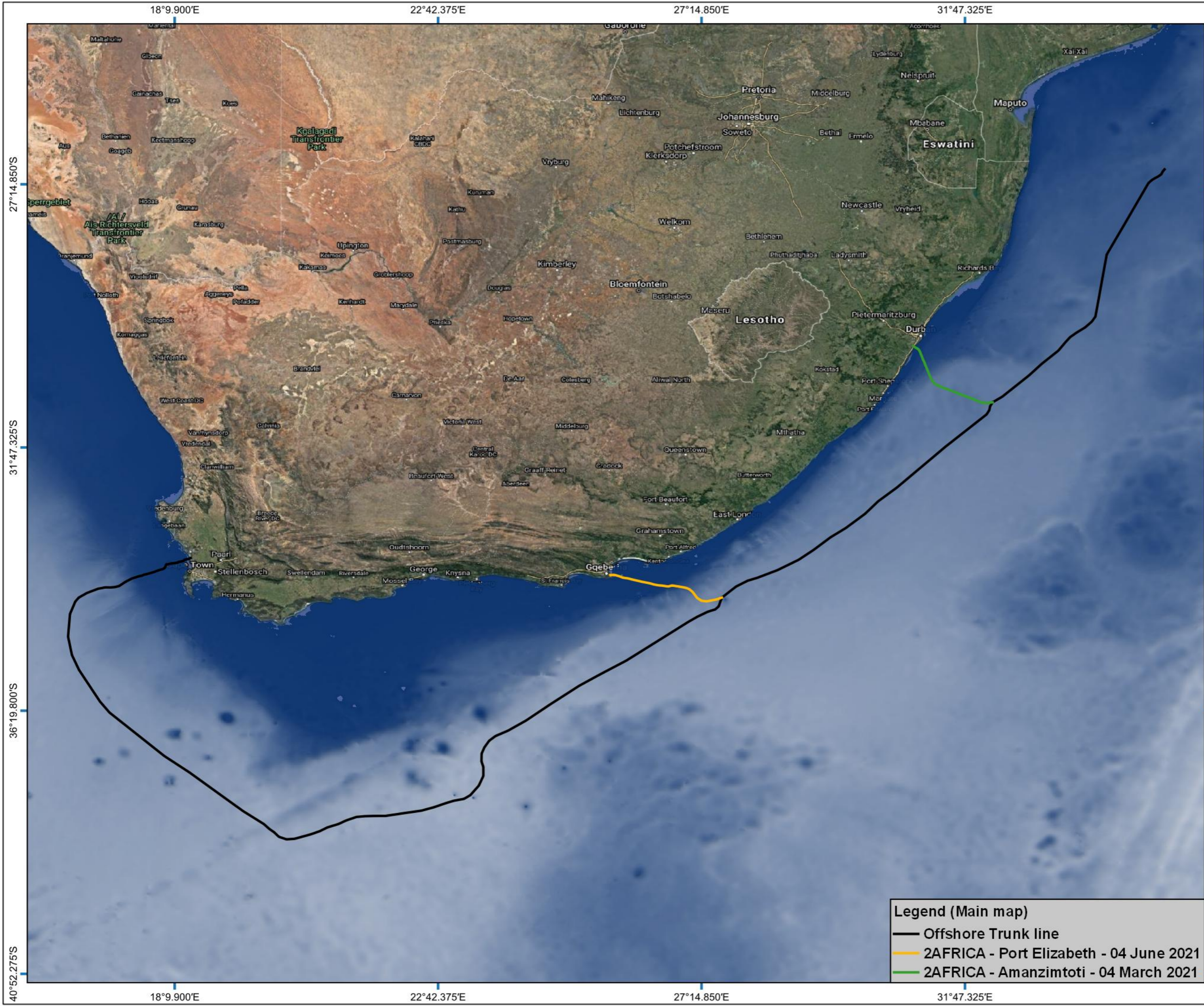


when printed at A4 (297 x 210 mm)
Date of print: 15 Jun 2021

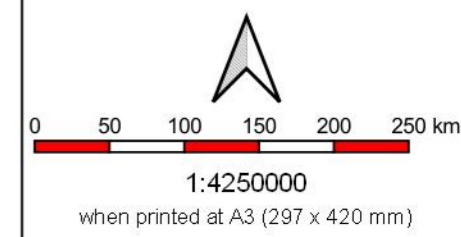
Co-Ordinate system
Projection: Unprojected
(Geographic)
Ellipsoid: WGS84
Units: Decimal Degrees

Distance notes
1 nautical mile = 1.852km
1km = 0.539957km

2AFRICA/GERA (East)
Gqeberha (Port Elizabeth)
**Offshore alignment up to
RSA territorial waters
200 nautical miles (EEZ) offshore**



2AFRICA/GERA (East)
Gqeberha (Port Elizabeth)
Offshore alignments received
Dated 04 June 2021



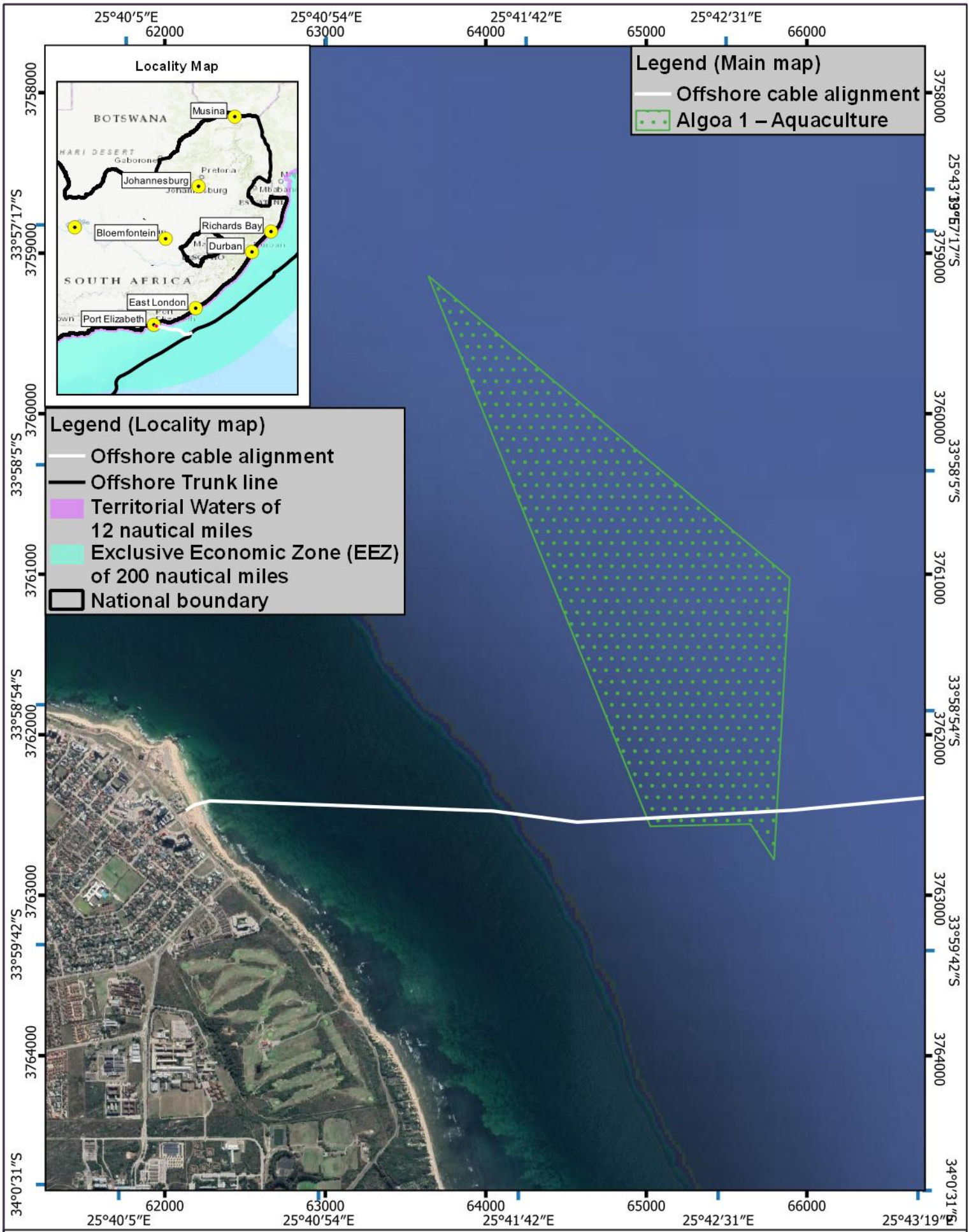
Co-Ordinate system
 Projection: Unprojected (Geographic)
 Ellipsoid: WGS84
 Units: Decimal Degrees

Legend (Main map)
 — Offshore Trunk line
 — 2AFRICA - Port Elizabeth - 04 June 2021
 — 2AFRICA - Amanzimtoti - 04 March 2021



For Giles Churchill





25°36.043'E

25°39.411'E

25°42.780'E

25°46.149'E

33°47.846'S

33°47.846'S

Legend (Main map)

- Offshore cable alignment
- Port Elizabeth offshore anchor zones
- Small craft
- General



33°51.215'S

33°51.215'S

33°54.583'S

33°54.583'S

33°57.952'S

33°57.952'S

34°1.320'S

34°1.320'S

Locality Map



Legend (Locality map)

- Offshore cable alignment
- Offshore Trunk line
- Territorial Waters of 12 nautical miles
- Exclusive Economic Zone (EEZ) of 200 nautical miles
- National boundary

25°36.043'E

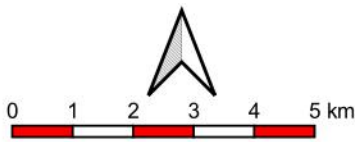
25°39.411'E

25°42.780'E

25°46.149'E

Mapping and layout by

For Giles Churchill



Projection: Transverse Mercator
 Datum: Hartebeeshoek 1994
 Ellipsoid: WGS84
 Central Meridian: 25°
 Scale Factor: 1
 Units: Metres

2AFRICA/GERA (East)
Gqeberha (Port Elizabeth)

Offshore alignment with Anchor zones (approximate) and 500m interval markers

Distance notes

1 nautical mile = 1.852km

1km = 0.539957nmi

25°36'29"E

25°43'39"E

25°50'50"E

25°58'1"E

Locality Map



Legend (Main map)

- Offshore cable alignment
- ▨ Territorial Waters of 12 nautical miles
- ▨ Exclusive Economic Zone (EEZ) of 200 nautical miles

Legend (Locality map)

- Offshore cable alignment
- Offshore Trunk line
- ▨ Territorial Waters of 12 nautical miles
- ▨ Exclusive Economic Zone (EEZ) of 200 nautical miles
- ▭ National boundary



25°36'29"E

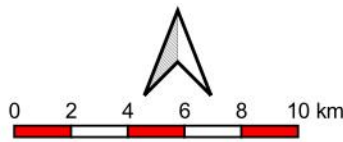
25°43'39"E

25°50'50"E

25°58'1"E

Mapping and layout by

For Giles Churchill



when printed at A4 (297 x 210 mm)
Date of print: 15 Jun 2021

Co-Ordinate system
Projection: Unprojected
(Geographic)
Ellipsoid: WGS84
Units: Decimal Degrees

Distance notes

1 nautical mile = 1.852km
1km = 0.539957nmi

2AFRICA/GERA (East)

Gqeberha (Port Elizabeth)

Offshore alignment up to
RSA territorial waters
12 nautical miles offshore

33°37'31"S

33°44'42"S

33°51'53"S

33°59'4"S

34°6'14"S

33°37'31"S

33°44'42"S

33°51'53"S

33°59'4"S

34°6'14"S

25°39.281'E 25°39.685'E 25°40.089'E 25°40.493'E 25°40.898'E

33°58.900'S
33°59.304'S

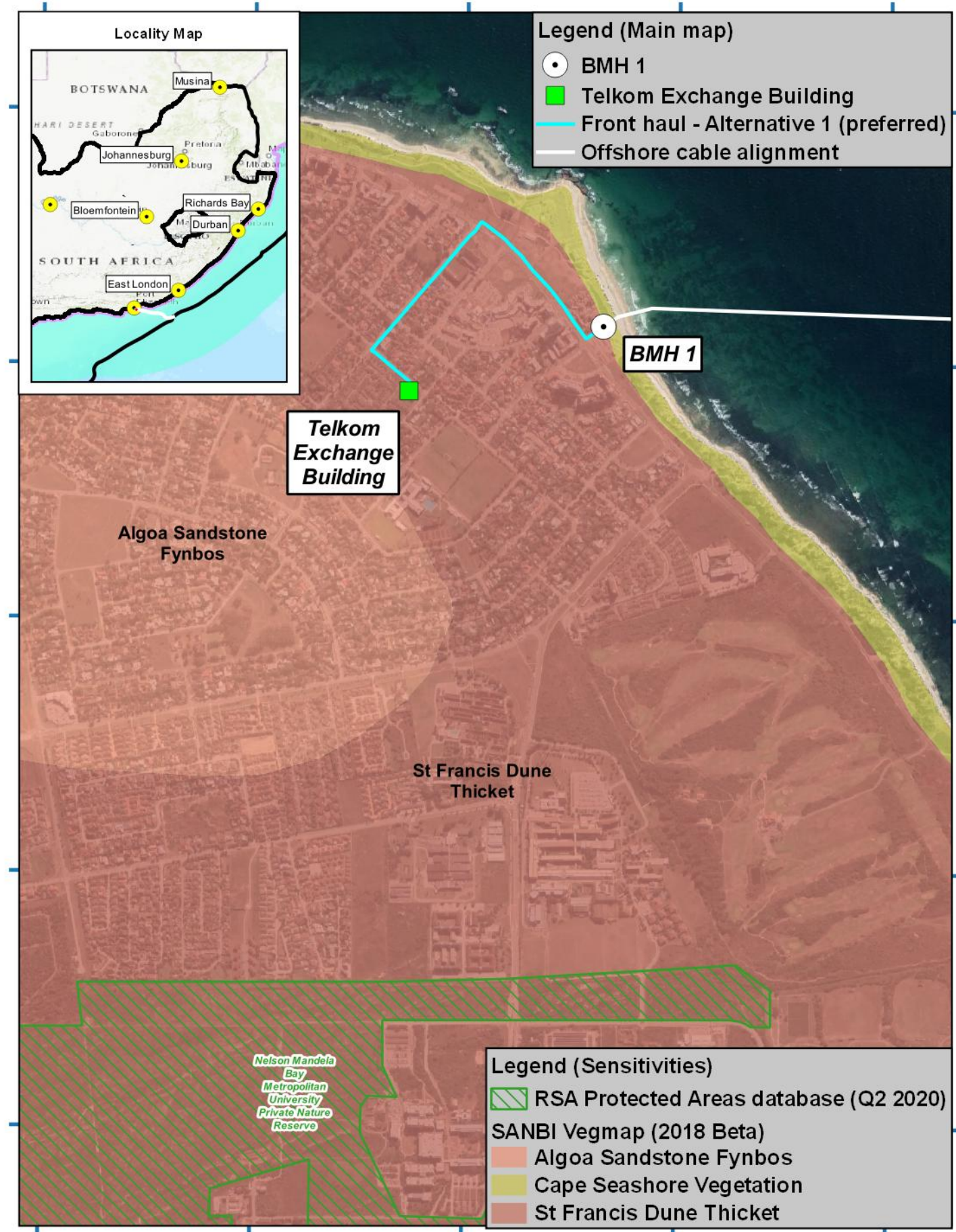
33°58.900'S
33°59.304'S

33°59.709'S
34°0.113'S

33°59.709'S
34°0.113'S

34°0.517'S

34°0.517'S



Legend (Main map)

- BMH 1
- Telkom Exchange Building
- Front haul - Alternative 1 (preferred)
- Offshore cable alignment



Telkom Exchange Building

BMH 1

Algoa Sandstone Fynbos

St Francis Dune Thicket

Nelson Mandela Bay Metropolitan University Private Nature Reserve

Legend (Sensitivities)

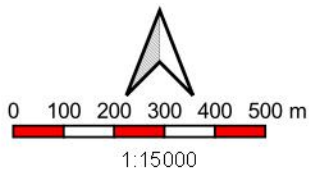
- RSA Protected Areas database (Q2 2020)
- Algoa Sandstone Fynbos
- Cape Seashore Vegetation
- St Francis Dune Thicket

SANBI Vegmap (2018 Beta)

25°39.281'E 25°39.685'E 25°40.089'E 25°40.493'E 25°40.898'E

Mapping and layout by **S3 Technologies** Spatial Systems Solutions

For Giles Churchill **acer AFRICA**



Projection: Transverse Mercator
Datum: Hartbeeshoek 1994
Ellipsoid: WGS84
Central Meridian: 25°
Scale Factor: 1
Units: Metres

2AFRICA/GERA (East)

Gqeberha (Port Elizabeth)

Landing Site with Beach Man Hole Position, Front Haul Alignment and Sensitivities

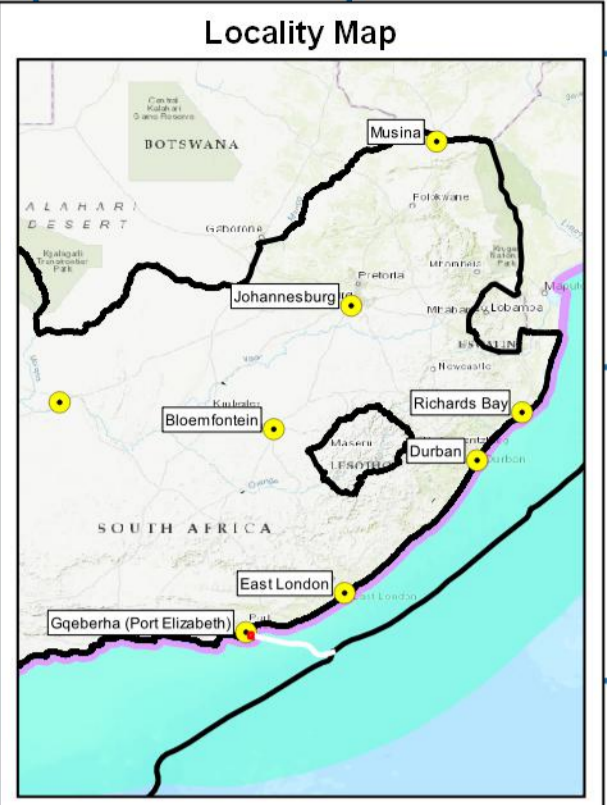
when printed at A4 (297 x 210 mm)
Date of print: 22 Jun 2021

Distance notes
1 nautical mile = 1.852km
1km = 0.539957km

25°37.659'E 25°38.558'E 25°39.458'E 25°40.358'E 25°41.258'E 25°42.157'E

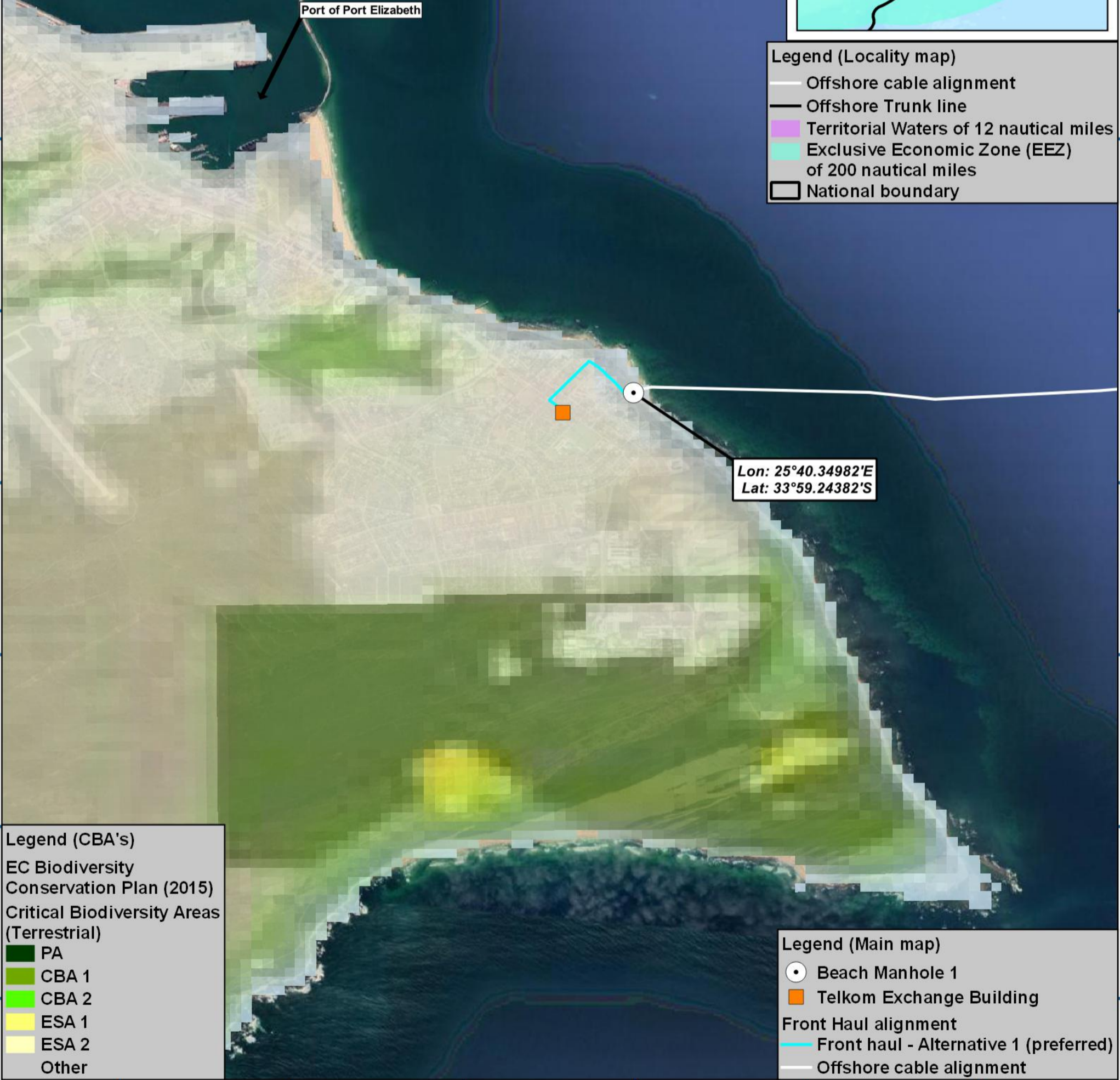
33°55.216'S
33°56.116'S
33°57.015'S
33°57.915'S
33°58.815'S
33°59.715'S
34°0.614'S
34°1.514'S
34°2.414'S

33°55.216'S
33°56.116'S
33°57.015'S
33°57.915'S
33°58.815'S
33°59.715'S
34°0.614'S
34°1.514'S
34°2.414'S



Legend (Locality map)

- Offshore cable alignment
- Offshore Trunk line
- Territorial Waters of 12 nautical miles
- Exclusive Economic Zone (EEZ) of 200 nautical miles
- National boundary



Legend (CBA's)
EC Biodiversity Conservation Plan (2015)
Critical Biodiversity Areas (Terrestrial)

- PA
- CBA 1
- CBA 2
- ESA 1
- ESA 2
- Other

Legend (Main map)

- Beach Manhole 1
- Telkom Exchange Building
- Front Haul alignment
- Front haul - Alternative 1 (preferred)
- Offshore cable alignment



0 500 1 000 1 500 2 000 2 500 m

1:24965
when printed at A3 (420 x 297 mm)
Date of print: 27 Aug 2021

Co-Ordinate system
Projection: Unprojected (Geographic)
Ellipsoid: WGS84
Units: Decimal Degrees
Main map grid coordinates
Degrees and Decimal Minutes
Distance notes
1 nautical mile = 1.852km
1km = 0.539957nmi

2AFRICA/GERA (East)

Port Elizabeth

CBA's 2015

24°6.994'E 25°32.111'E 26°57.228'E 28°22.345'E 29°47.463'E

29°47.463'S

31°12.580'S

32°37.697'S

34°2.815'S

35°27.932'S

36°53.049'S

29°47.463'S

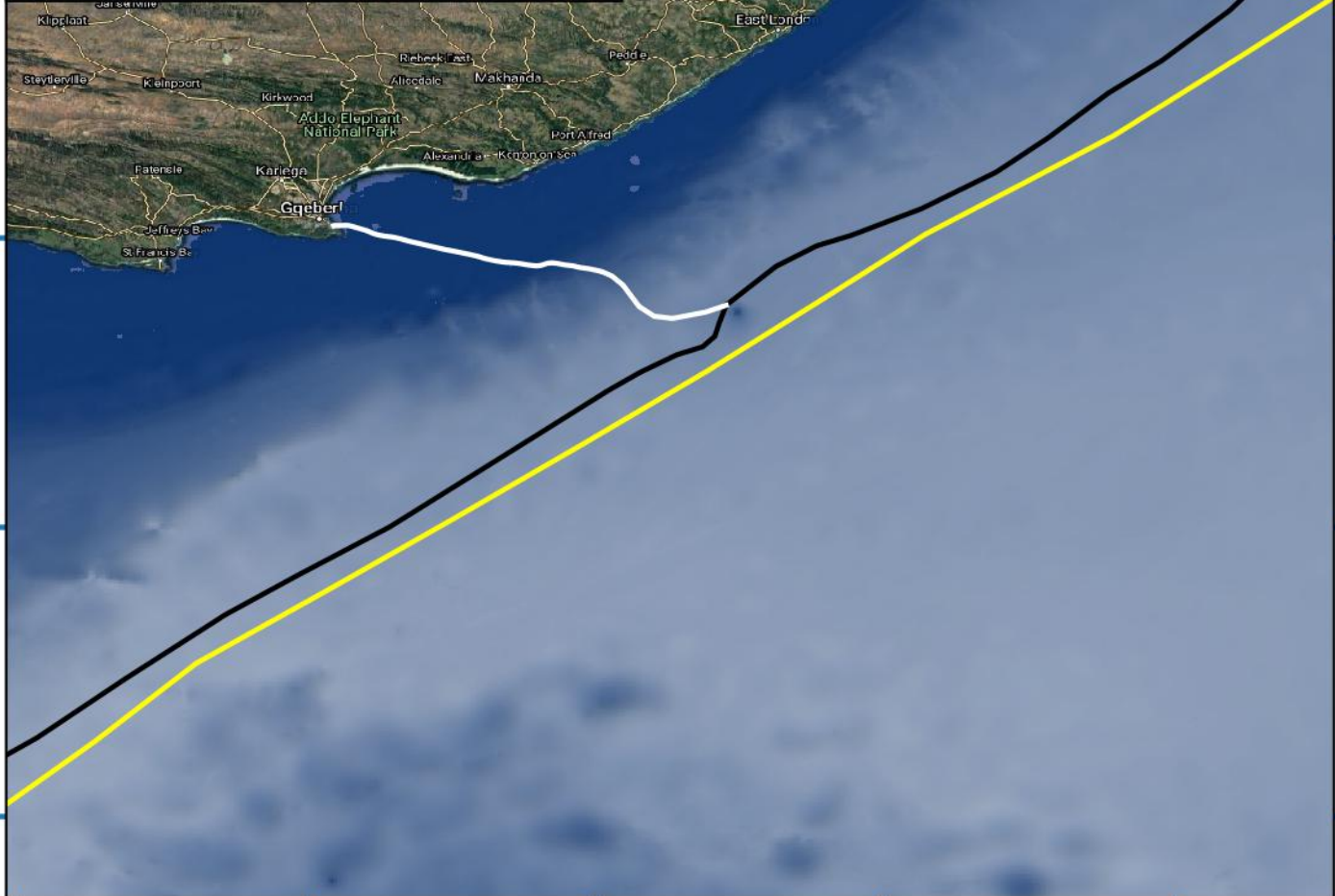
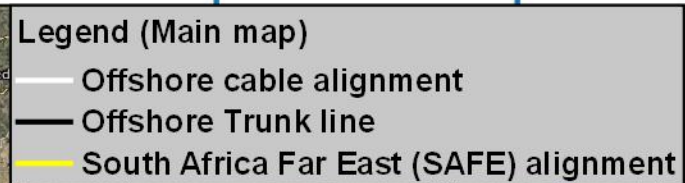
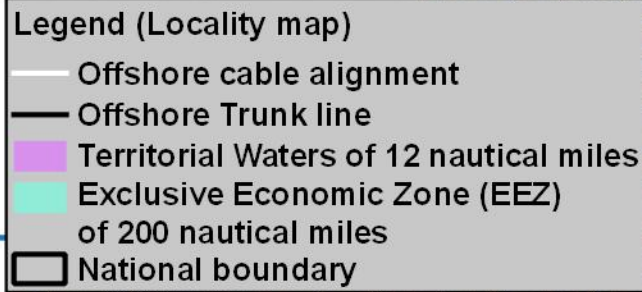
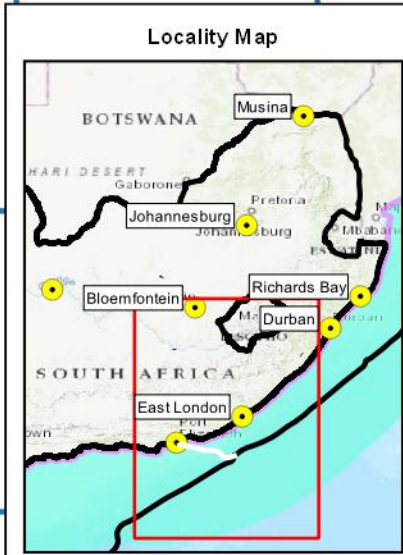
31°12.580'S

32°37.697'S

34°2.815'S

35°27.932'S

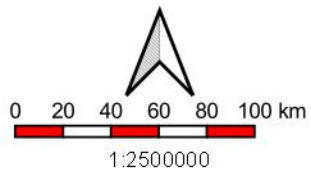
36°53.049'S



24°6.994'E 25°32.111'E 26°57.228'E 28°22.345'E 29°47.463'E

Mapping and layout by

For Giles Churchill



Co-Ordinate system
Projection: Unprojected
(Geographic)
Ellipsoid WGS84
Units: Decimal Degrees

2AFRICA/GERA (East)
Gqeberha (Port Elizabeth)

Offshore alignment
with 2AFRICA/GERA (East)
Trunk line and SAFE Alignment

when printed at A4 (297 x 210 mm)
Date of print: 27 Aug 2021

Distance notes
1 nautical mile = 1.852km
1km = 0.539957nmi

25°50'33"E

26°25'48"E

27°1'2"E

27°36'16"E

32°18'12"S

32°53'26"S

33°28'40"S

34°3'55"S

34°39'9"S

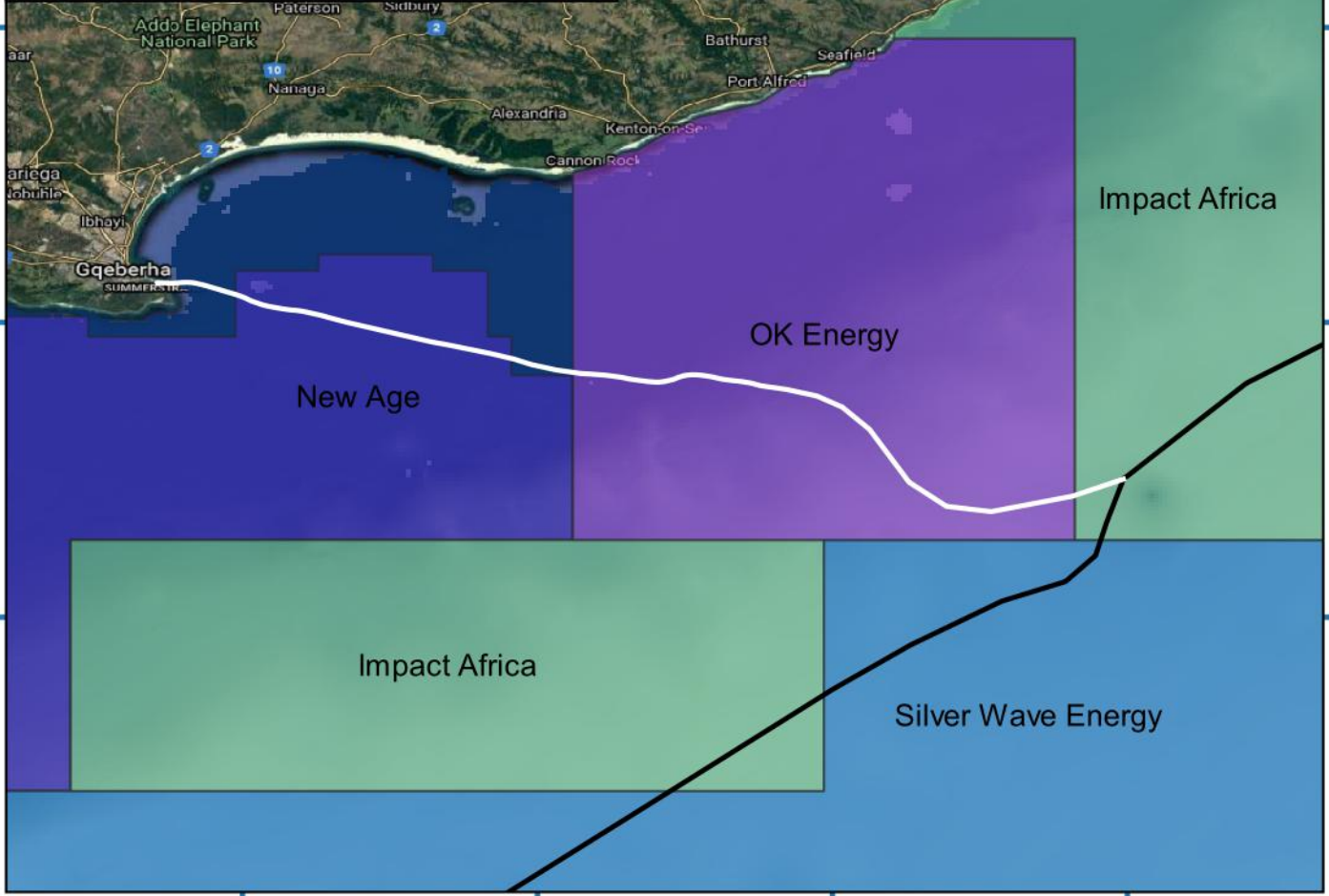
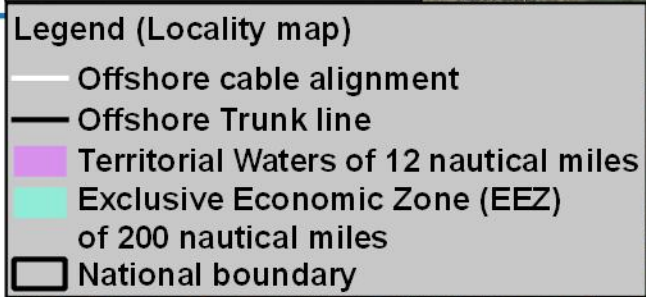
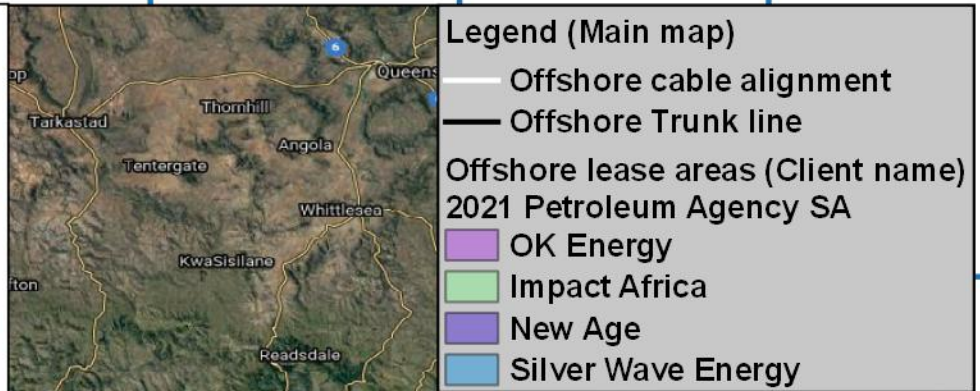
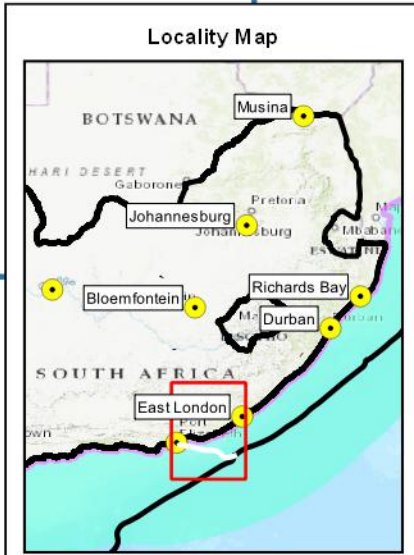
32°18'12"S

32°53'26"S

33°28'40"S

34°3'55"S

34°39'9"S



25°50'33"E

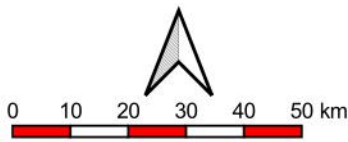
26°25'48"E

27°1'2"E

27°36'16"E

Mapping and layout by

For Giles Churchill



when printed at A4 (297 x 210 mm)
Date of print: 27 Aug 2021

Co-Ordinate system
Projection: Unprojected
(Geographic)
Ellipsoid: WGS84
Units: Decimal Degrees

Distance notes
1 nautical mile = 1.852km
1km = 0.539957nmi

2AFRICA/GERA (East)
Gqeberha (Port Elizabeth)

Offshore alignment
with Offshore Lease Areas

25°39.954'E 61500 25°40.089'E 25°40.224'E 62000 25°40.358'E

Locality Map

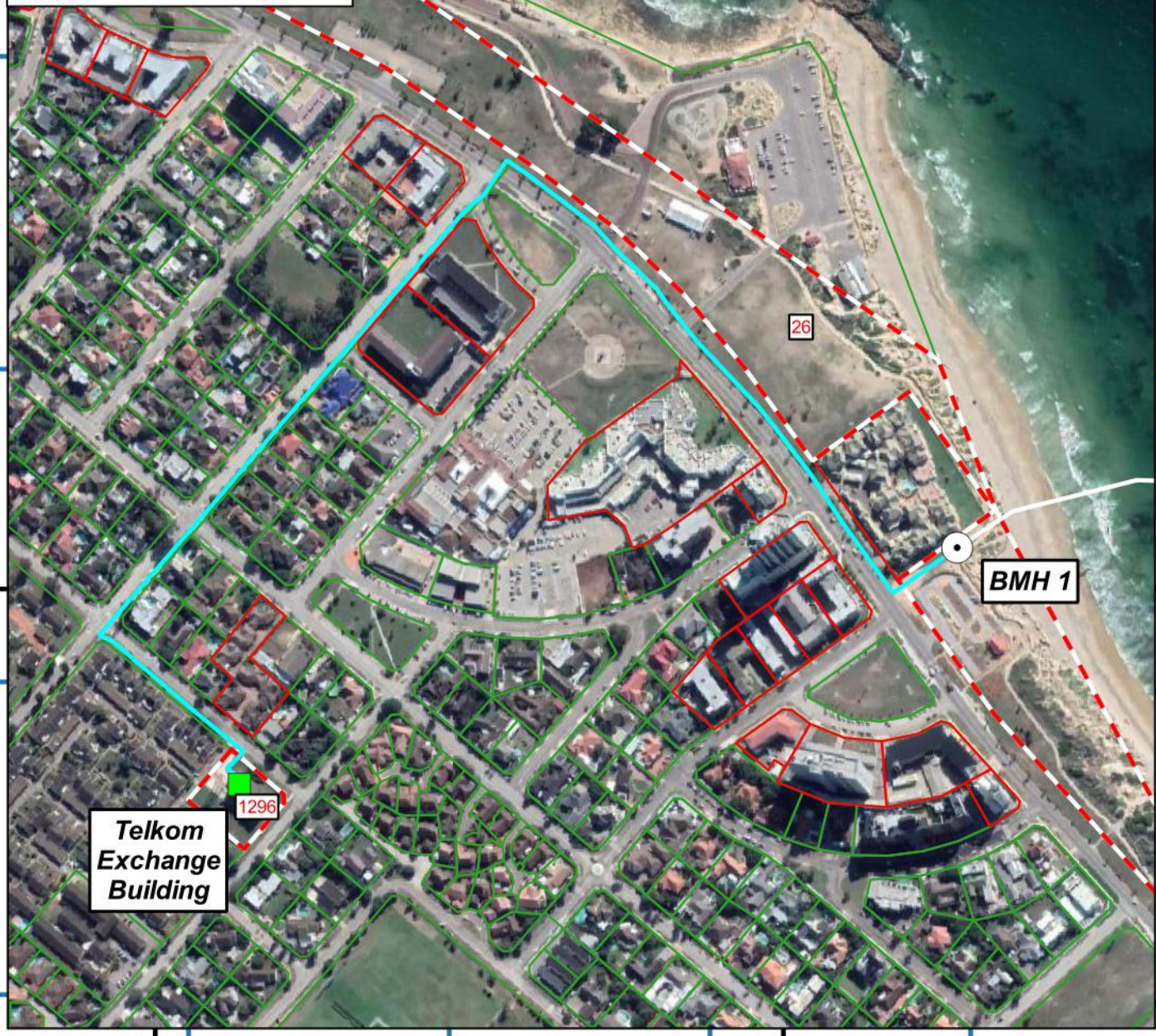


Legend (Main map)

- BMH 1
- Telkom Exchange Building
- Front haul - Alternative 1
- Offshore cable alignment
- Affected erven
- Registered cadastral
- Sectional cadastral

33°58.900'S
3762000
33°59.035'S
33°59.169'S
3762500
33°59.304'S
33°59.439'S

33°58.900'S
3762000
33°59.035'S
33°59.169'S
3762500
33°59.304'S
33°59.439'S



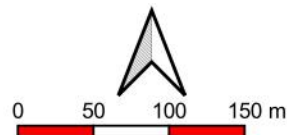
Telkom Exchange Building

BMH 1

Mapping and layout by



For Giles Churchill



1:5000

when printed at A4 (297 x 210 mm)
Date of print: 27 Aug 2021

Co-Ordinate system
Projection: Transverse Mercator
Datum: Hartebeeshoek 1994
Ellipsoid: WGS84
Meridian: Lo25°
Units: Metres

Main map grid coordinates
Degrees and Decimal Minutes

Distance notes

1 nautical mile = 1.852km
1km = 0.539957nmi

2AFRICA/GERA (East)

Gqeberha (Port Elizabeth)

**Landing Site with
Beach Man Hole Position,
Front Haul Alignment and
Affected Cadastral**

26°2.584'E

26°29.525'E

26°56.466'E

27°23.407'E

32°46.700'S
33°13.641'S

32°46.700'S
33°13.641'S



Legend (Main map)

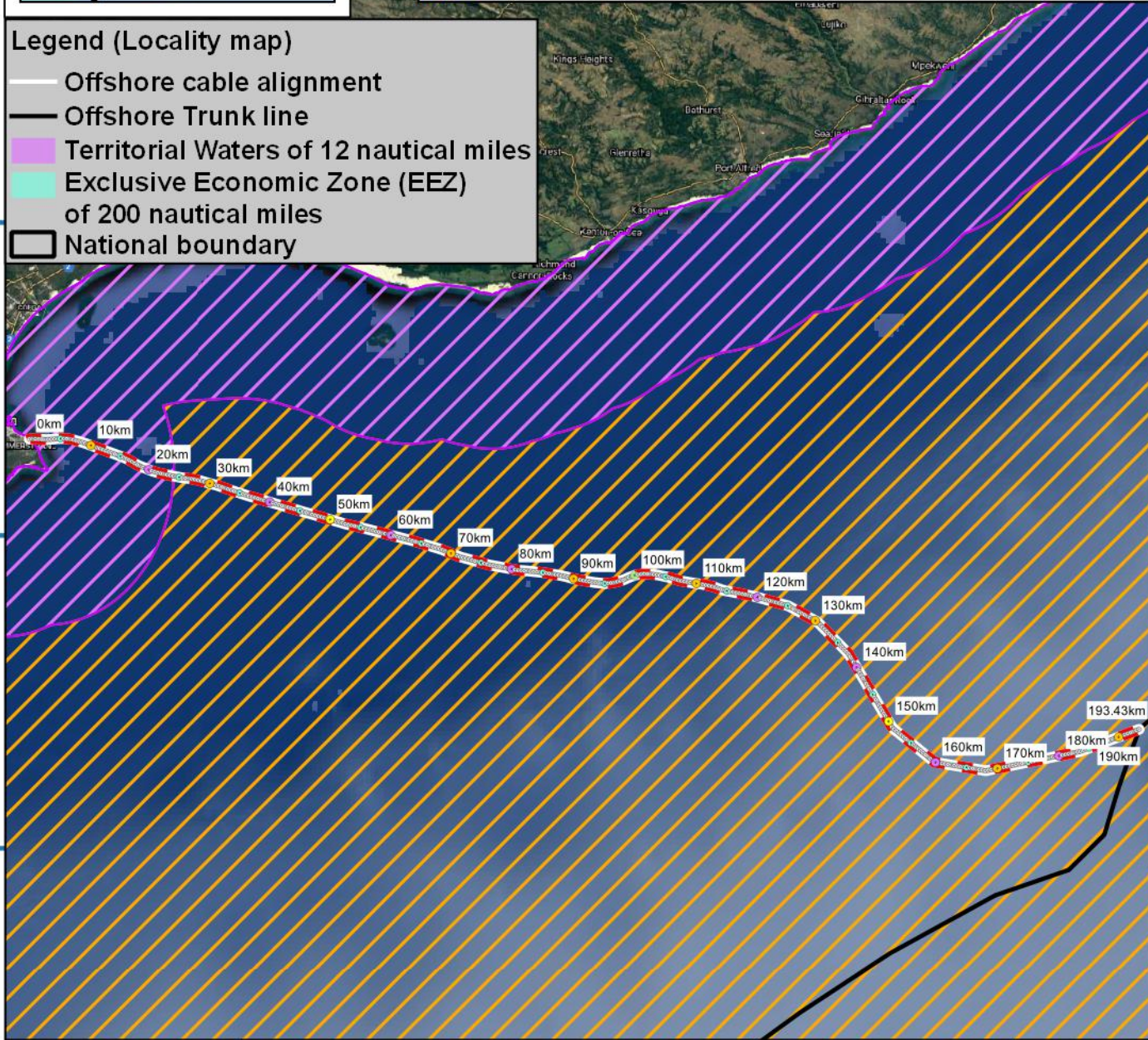
- Alignment marker coordinates
- 250m interval
- 5km interval
- 10km interval
- 20km interval
- 50km interval
- 100km interval
- Offshore cable alignment
- Offshore Trunk line
- Offshore cable corridor – 0.5 km (250 m each side)
- Territorial Waters of 12 nautical miles
- Exclusive Economic Zone (EEZ) of 200 nautical miles

Legend (Locality map)

- Offshore cable alignment
- Offshore Trunk line
- Territorial Waters of 12 nautical miles
- Exclusive Economic Zone (EEZ) of 200 nautical miles
- National boundary

33°40.582'S
34°07.523'S
34°34.464'S

33°40.582'S
34°07.523'S
34°34.464'S



26°2.584'E

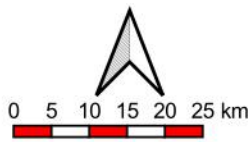
26°29.525'E

26°56.466'E

27°23.407'E

Mapping and layout by

For Giles Churchill



when printed at A4 (297 x 210 mm)
Date of print: 27 August 2021

Projection: Transverse Mercator
Datum: Hartebeeshoek 1994
Ellipsoid: WGS84
Central Meridian: 25°
Scale Factor: 1
Units: Metres

Distance notes

1 nautical mile = 1.852km

1km = 0.539957nm

2AFRICA/GERA (East)

Gqeberha (Port Elizabeth)

Offshore alignment up to 200nm EEZ with interval markers and Corridor footprint

25°40'17"E 25°40'23"E 25°40'30"E 25°40'36"E 25°40'42"E

33°59'0"S

33°59'6"S

33°59'12"S

33°59'18"S

33°59'24"S

33°59'0"S

33°59'6"S

33°59'12"S

33°59'18"S

33°59'24"S



Legend (Main map)

- BMH 1
- Front haul - Alternative 1 (preferred)
- Sea Earth plate
- Sea Earth Route
- Offshore cable alignment
- Earth array (100 sq.m)
- Beach landing corridor – 0,1 km (50 m each side)
- Land cable corridor – 0,01 km (5m each side)



BMH 1

Lon: 25°40.332'E
Lat: 33°59.252'S

**Cape Seashore
Vegetation**

Legend (Affected Sensitivities)

- SANBI Vegmap (2018 Beta)**
- Cape Seashore Vegetation
 - St Francis Dune Thicket

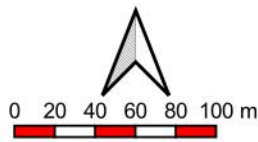
25°40'17"E 25°40'23"E 25°40'30"E 25°40'36"E 25°40'42"E

Mapping and layout by



acer
AFRICA

For Giles Churchill



when printed at A4 (297 x 210 mm)
Date of print: 27 Aug 2021

Co-Ordinate system
Projection: Transverse Mercator
Datum: Hartbeeshoek 1994
Ellipsoid: WGS84
Meridian: Lo25°
Units: Metres

Main map grid coordinates
Degrees and Decimal Minutes
Distance notes

1 nautical mile = 1.852km
1km = 0.539957nmi

2AFRICA/GERA (East)

Gqeberha (Port Elizabeth)

**Landing Site with BMH Position,
Front Haul Alignment,
Sea Earth Route and Plate,
Sensitivities and
Construction footprint**

25°40'17"E 25°40'23"E 25°40'30"E 25°40'36"E 25°40'42"E

33°59'0"S

33°59'6"S

33°59'12"S

33°59'18"S

33°59'24"S

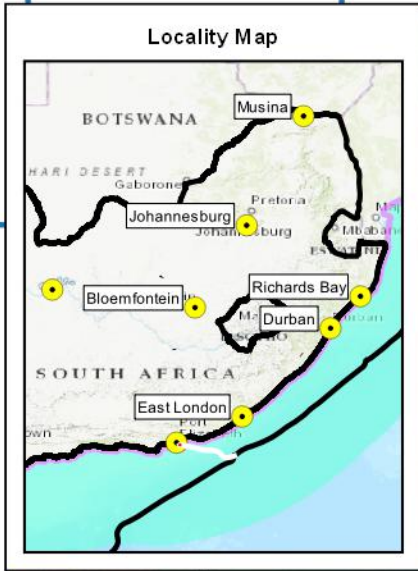
33°59'0"S

33°59'6"S

33°59'12"S

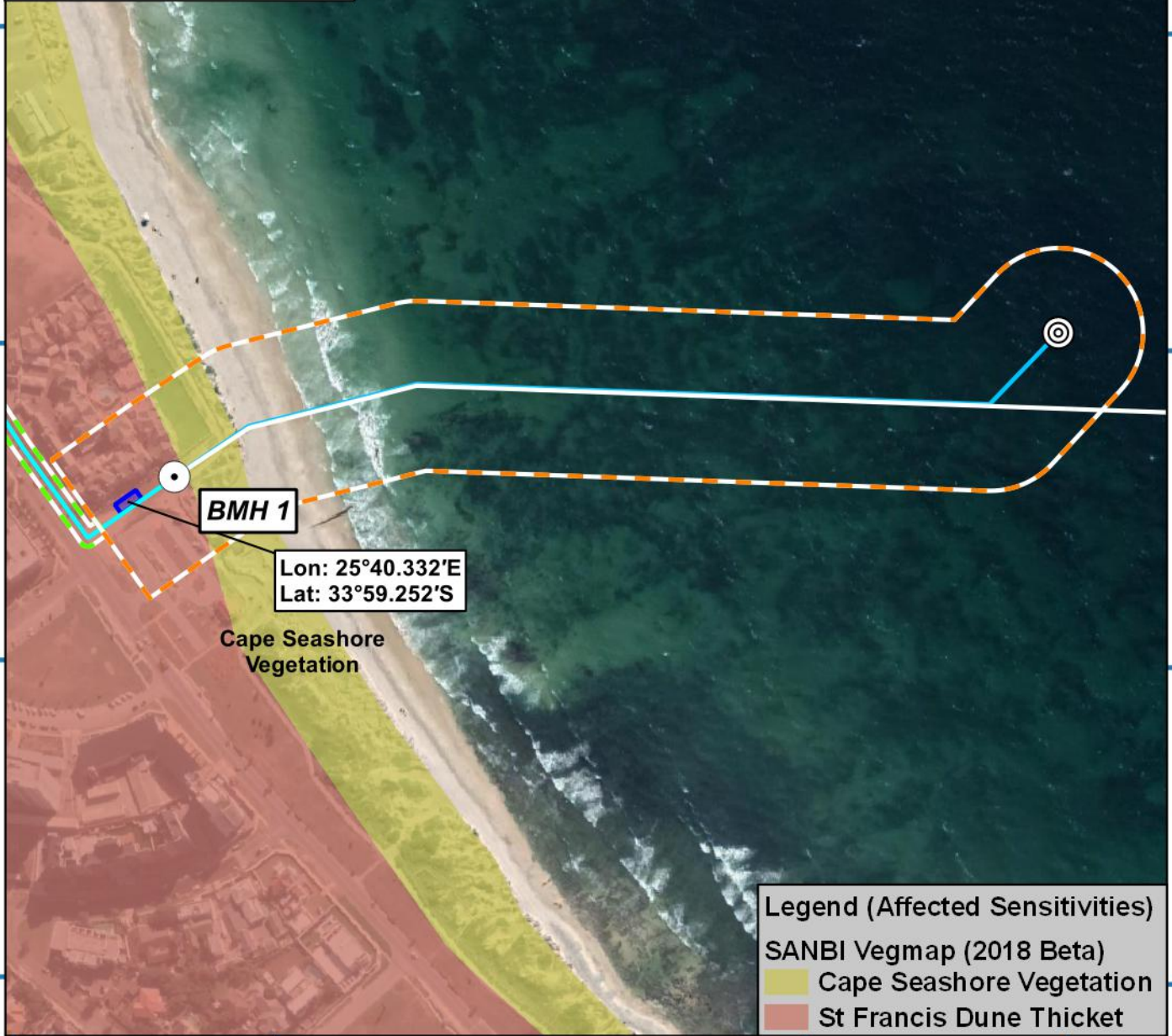
33°59'18"S

33°59'24"S



Legend (Main map)

- BMH 1
- Front haul - Alternative 1 (preferred)
- ⊙ Sea Earth plate
- Sea Earth Route
- Offshore cable alignment
- Earth array (100 sq.m)
- ▨ Beach landing corridor – 0,1 km (50 m each side)
- ▨ Land cable corridor – 0,01 km (5m each side)



BMH 1

Lon: 25°40.332'E
Lat: 33°59.252'S

**Cape Seashore
Vegetation**

Legend (Affected Sensitivities)

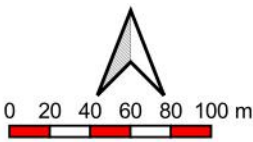
- SANBI Vegmap (2018 Beta)**
- Cape Seashore Vegetation
 - St Francis Dune Thicket

25°40'17"E 25°40'23"E 25°40'30"E 25°40'36"E 25°40'42"E

Mapping and layout by



For Giles Churchill



1:3750

when printed at A4 (297 x 210 mm)

Date of print: 27 Aug 2021

Co-Ordinate system
Projection: Transverse Mercator
Datum: Hartbeeshoek 1994
Ellipsoid: WGS84
Meridian: Lo25°
Units: Metres

Main map grid coordinates
Degrees and Decimal Minutes
Distance notes

1 nautical mile = 1.852km

1km = 0.539957km

2AFRICA/GERA (East)

Gqeberha (Port Elizabeth)

**Landing Site with BMH Position,
Front Haul Alignment,
Sea Earth Route and Plate,
Sensitivities and
Construction footprint**

25°40'19"E

25°40'21"E

25°40'23"E

25°40'26"E

33°59'10"S

33°59'10"S

33°59'12"S

33°59'12"S

33°59'14"S

33°59'14"S

33°59'16"S

33°59'16"S

33°59'18"S

33°59'18"S

25°40'19"E

25°40'21"E

25°40'23"E

25°40'26"E

33°59'18"S

Locality Map



Legend (Main map)

- BMH 1
- Front haul - Alternative 1 (preferred)
- Offshore cable alignment
- Earth array (100 sq.m)
- Beach landing corridor – 0,1 km (50 m each side)
- Land cable corridor – 0,01 km (5m each side)

Cape Seashore Vegetation

St Francis Dune Thicket

Lon: 25°40.332'E
Lat: 33°59.252'S

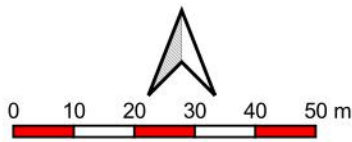
BMH 1

Legend (Sensitivities)

- SANBI Vegmap (2018 Beta)
- Cape Seashore Vegetation
 - St Francis Dune Thicket

Mapping and layout by

For Giles Churchill



when printed at A4 (297 x 210 mm)
Date of print: 27 Aug 2021

Co-Ordinate system
Projection: Transverse Mercator
Datum: Hartbeeshoek 1994
Ellipsoid: WGS84
Meridian: Lo25°
Units: Metres

Main map grid coordinates
Degrees and Decimal Minutes
Distance notes

1 nautical mile = 1.852km
1km = 0.539957km

2AFRICA/GERA (East)
Gqeberha (Port Elizabeth)

**Landing Site with
Beach Man Hole Position,
Front Haul Alignment,
Sensitivities and
Construction footprint**

25°40'19"E

25°40'21"E

25°40'23"E

25°40'26"E

33°59'10"S

33°59'10"S

33°59'12"S

33°59'12"S

33°59'14"S

33°59'14"S

33°59'16"S

33°59'16"S

33°59'18"S

33°59'18"S

25°40'19"E

25°40'21"E

25°40'23"E

25°40'26"E

33°59'18"S

Locality Map



Legend (Main map)

- BMH 1
- Front haul - Alternative 1 (preferred)
- Offshore cable alignment
- Earth array (100 sq.m)

Cape Seashore Vegetation

Lon: 25°40.332'E
Lat: 33°59.252'S

BMH 1

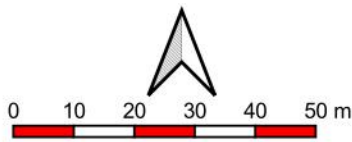
St Francis Dune Thicket

Legend (Sensitivities)

- SANBI Vegmap (2018 Beta)
- Cape Seashore Vegetation
 - St Francis Dune Thicket

Mapping and layout by

For Giles Churchill



when printed at A4 (297 x 210 mm)
Date of print: 27 Aug 2021

Co-Ordinate system
Projection: Transverse Mercator
Datum: Hartbeeshoek 1994
Ellipsoid: WGS84
Meridian: Lo25°
Units: Metres

Main map grid coordinates
Degrees and Decimal Minutes
Distance notes

1 nautical mile = 1.852km
1km = 0.539957km

2AFRICA/GERA (East)

Gqeberha (Port Elizabeth)

**Landing Site with
Beach Man Hole Position,
Front Haul Alignment,
Sensitivities and
Earth Array**