

Figure 1: Location of the proposed Sol Invictus 132kV powerline and proposed Aggeneys substation expansion (source: LOGIS, 2021)

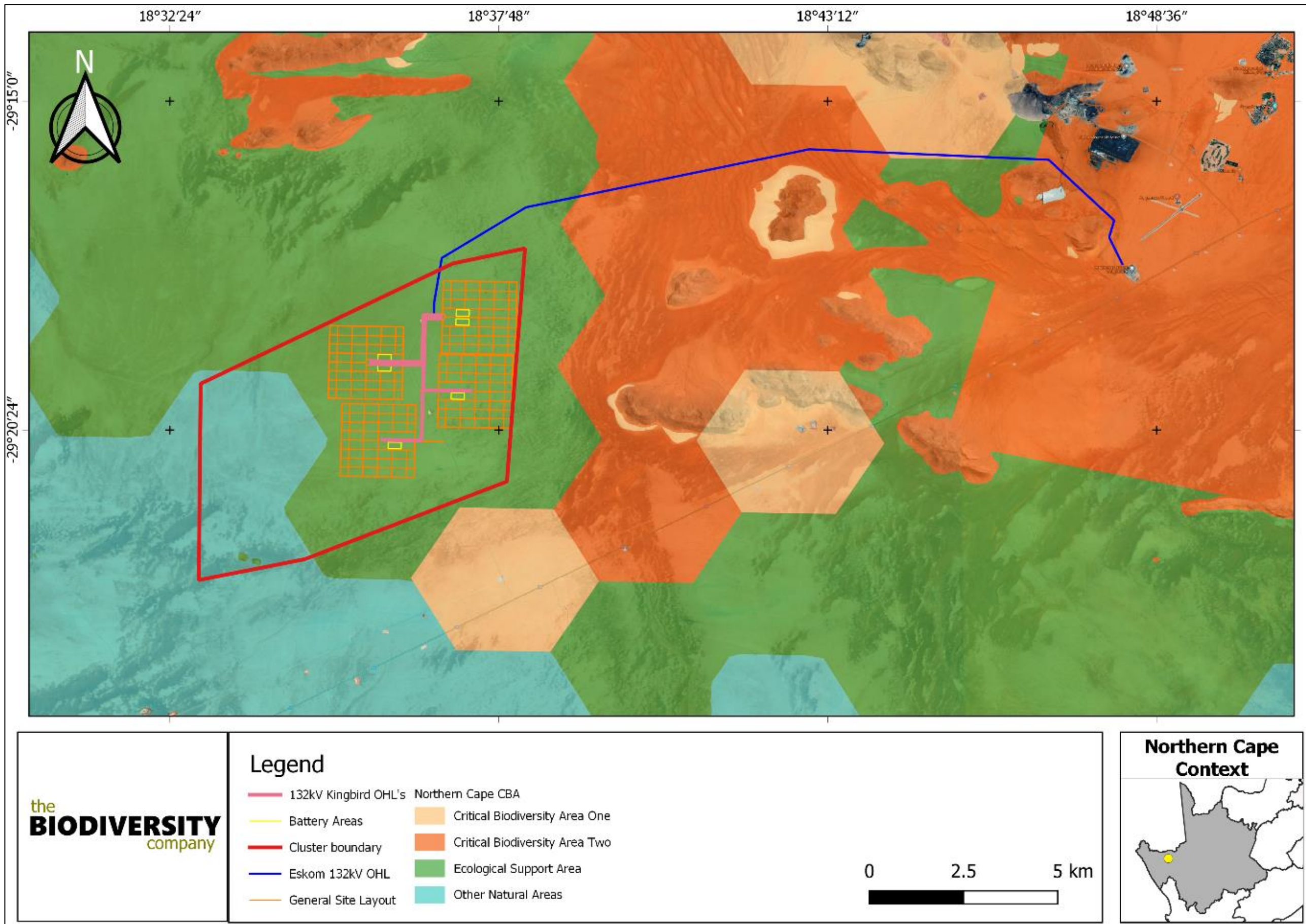


Figure 2: CBAs in relation to the proposed Sol Invictus Powerline and Aggeneis substation (source: The Biodiversity Company, 2021)

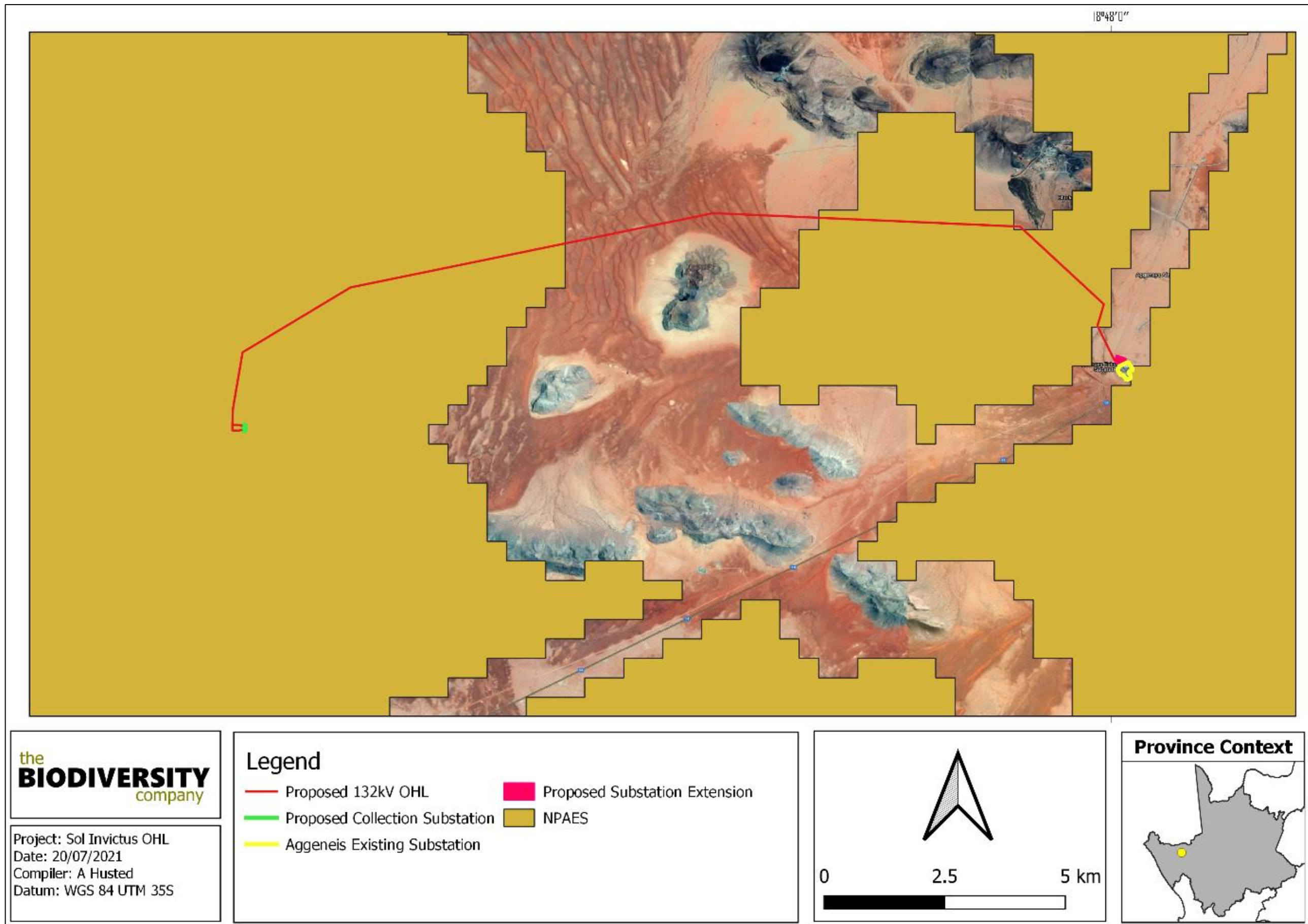


Figure 3: The project area in relation to the Kamiesberg Bushmanland Augrabies NPAES (source: The Biodiversity Company, 2021)

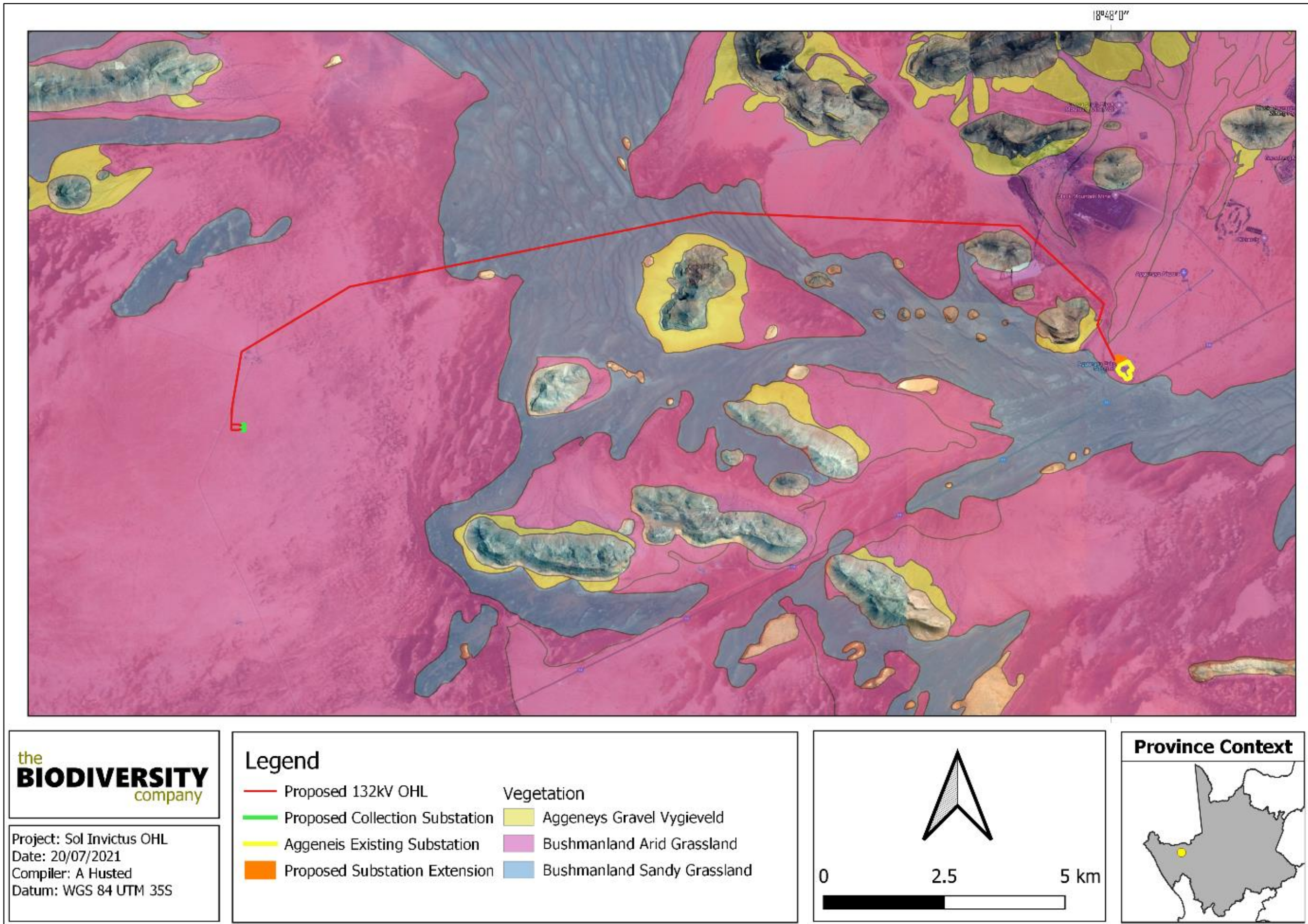


Figure 4: Map illustrating the vegetation type associated with the project area

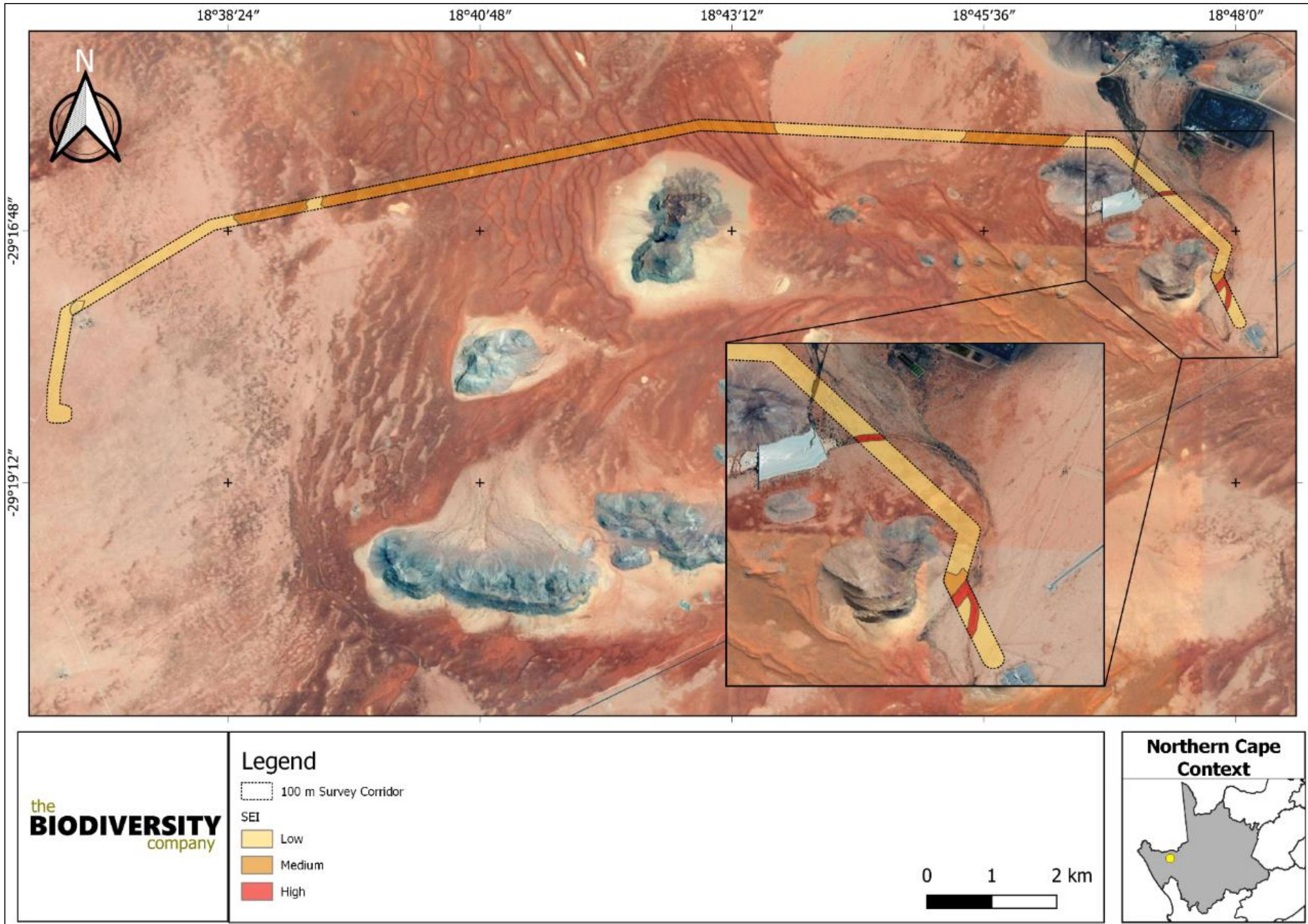


Figure 5: Terrestrial biodiversity sensitivity for the OHPL

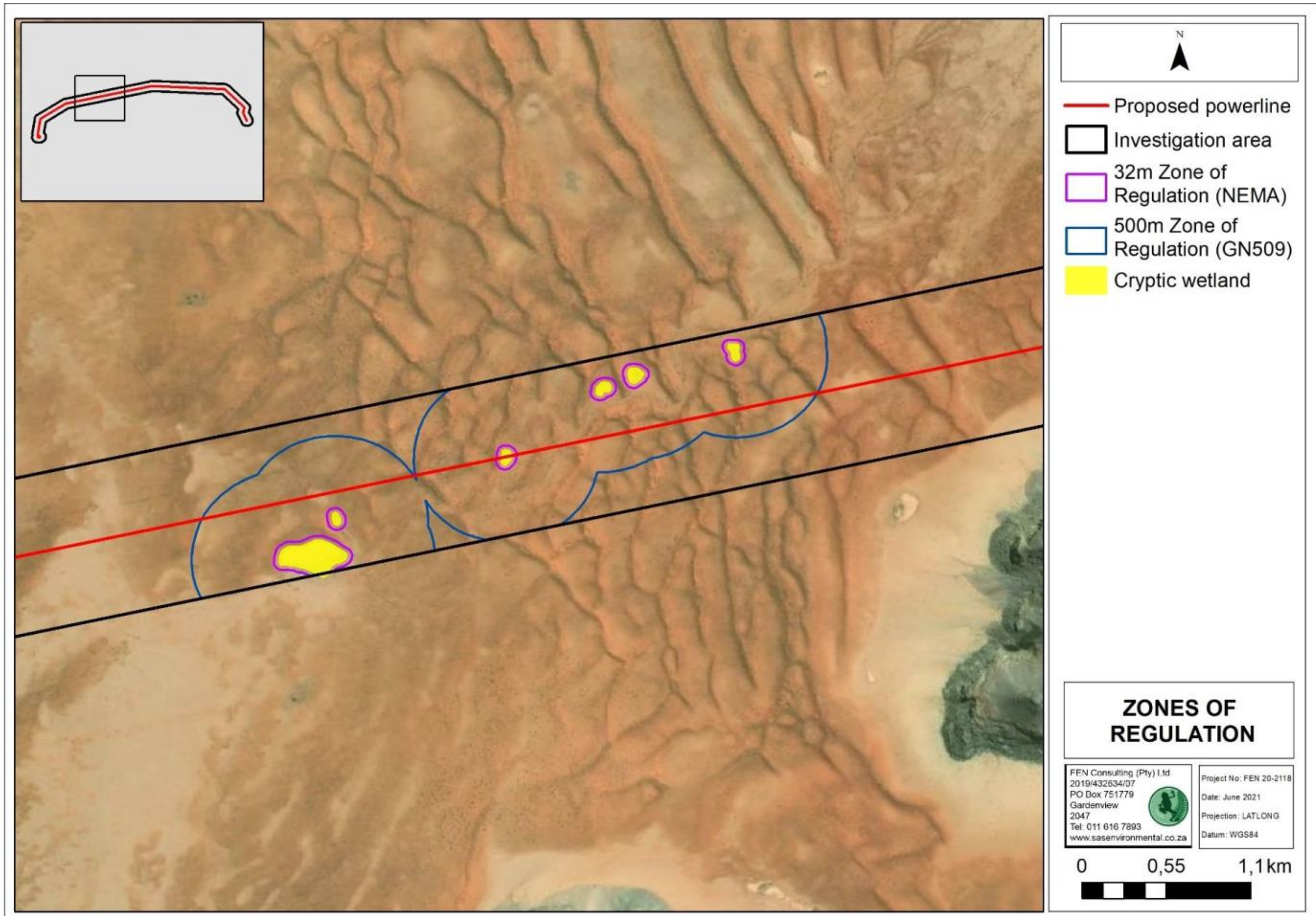


Figure 6 Cryptic wetlands identified within the investigation area of the proposed powerline with the associated zones of regulation in terms of NEMA and GN509 as it relates to the NWA

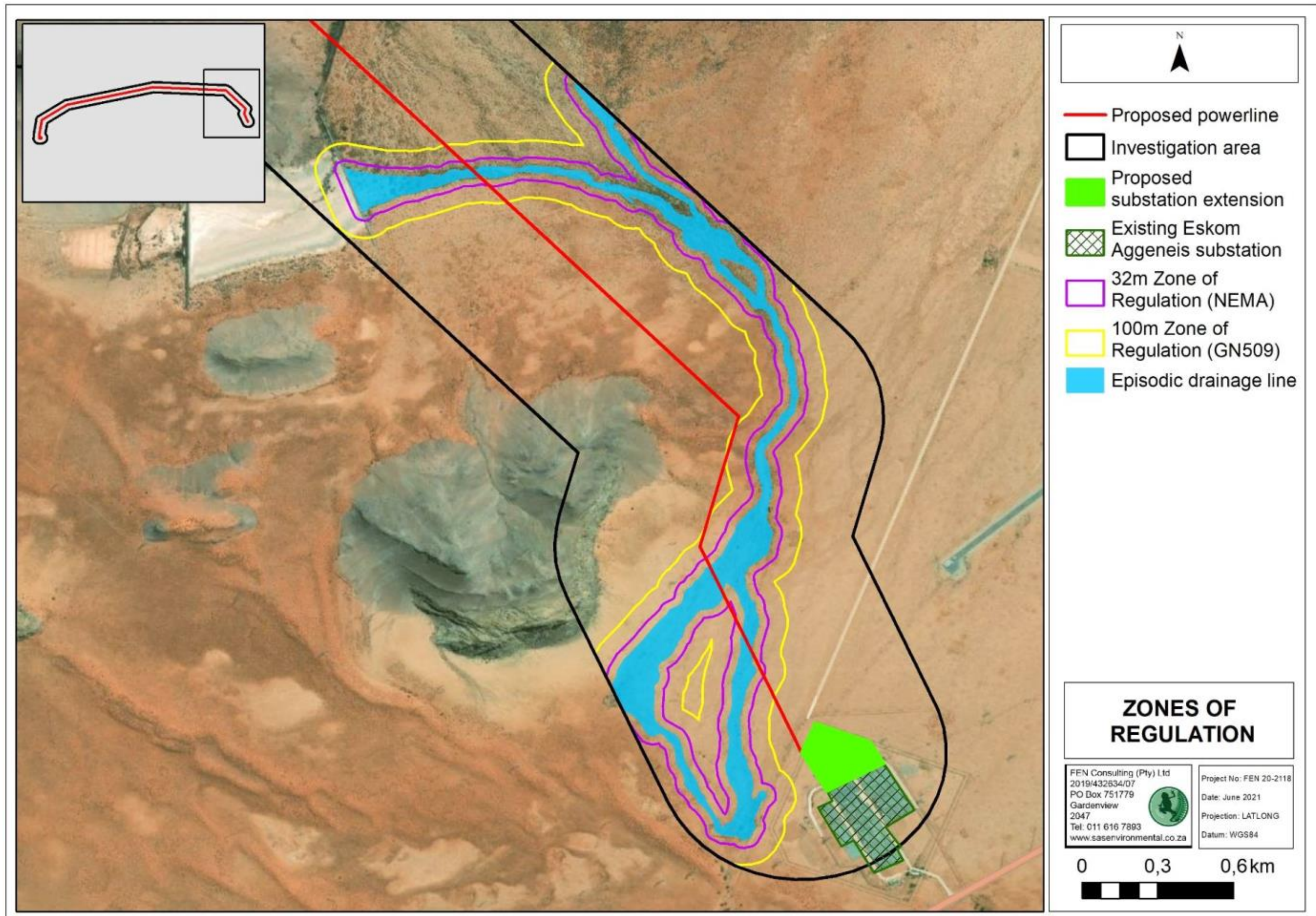


Figure 7 The episodic drainage line associated with the eastern portion of the proposed powerline and investigation area with the associated zones of regulation in terms of NEMA and GN509 as it relates to the NWA

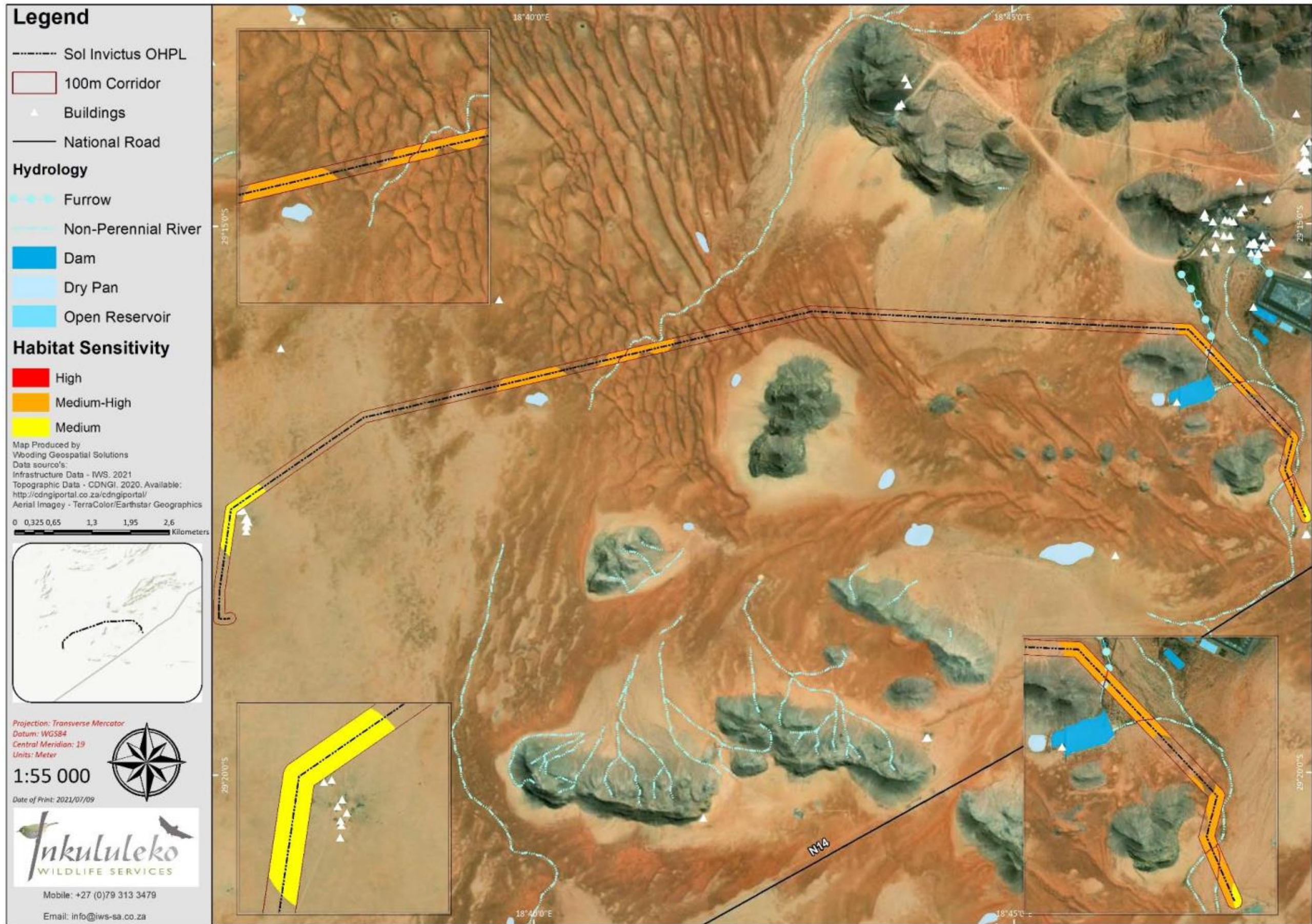


Figure 8: Bat sensitivity map for the proposed Sol Invictus Overhead Power Line

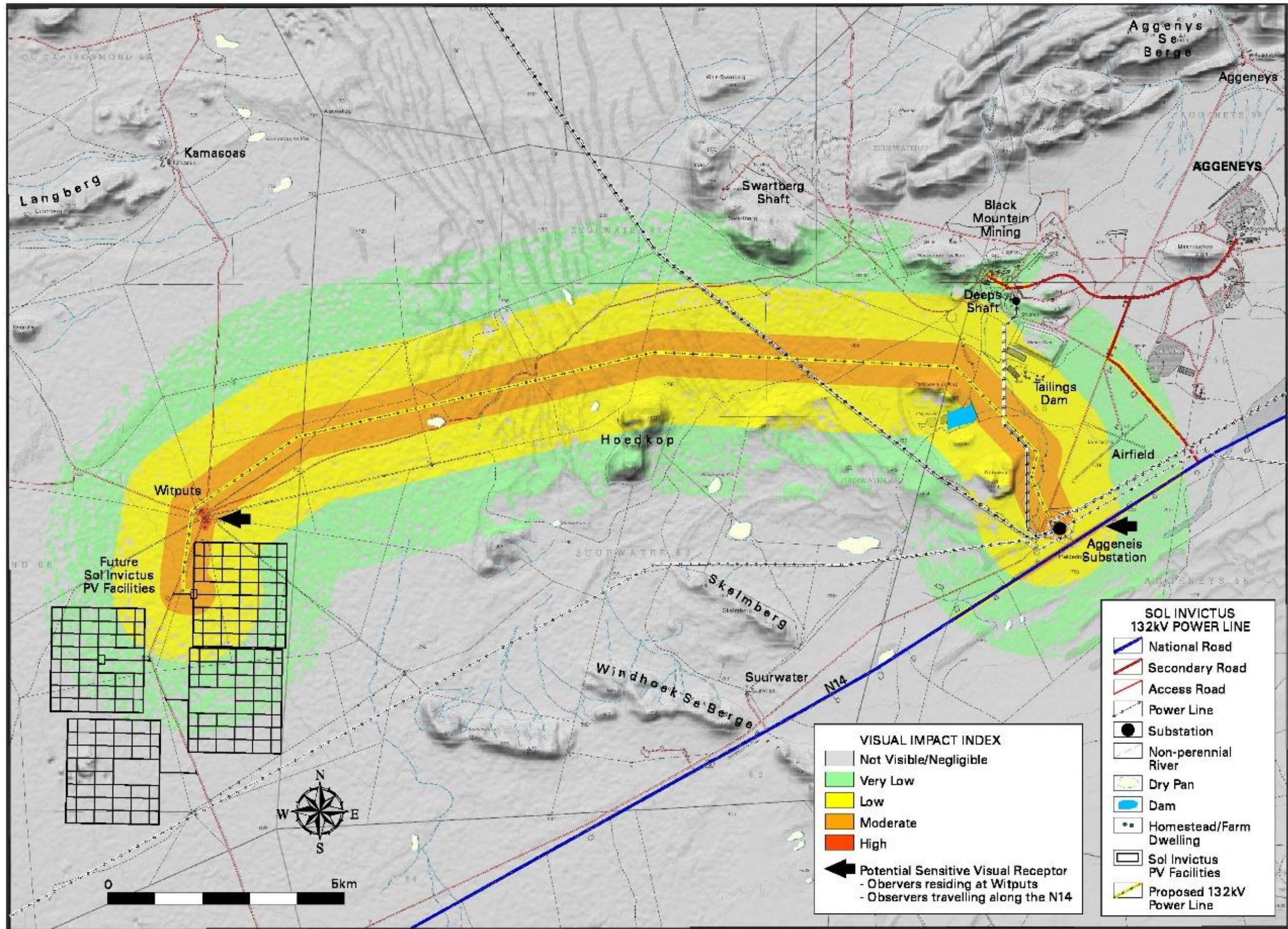


Figure 9: Visual impact index and potentially affected sensitive visual receptors