

# Appendix G.5

## **PALAEONTOLOGY IMPACT ASSESSMENT**



**Palaeontological Impact Assessment for the  
proposed R-Bay Chemical warehouse, southeast  
of Pietermaritzburg,  
KwaZulu Natal Province**

**Desktop Study (Phase 1)**

**For**

**WSP in Africa**

**24 March 2023**

**Prof Marion Bamford**

Palaeobotanist

P Bag 652, WITS 2050

Johannesburg, South Africa

[Marion.bamford@wits.ac.za](mailto:Marion.bamford@wits.ac.za)

## **Expertise of Specialist**

The Palaeontologist Consultant: Prof Marion Bamford  
Qualifications: PhD (Wits Univ, 1990); FRSSAf, mASSAf  
Experience: 34 years research and lecturing in Palaeontology  
26 years PIA studies and over 350 projects completed

## **Declaration of Independence**

This report has been compiled by Professor Marion Bamford, of the University of the Witwatersrand, sub-contracted by WSP in Africa, Midrand, South Africa. The views expressed in this report are entirely those of the author and no other interest was displayed during the decision making process for the Project.

Specialist: Prof Marion Bamford

A handwritten signature in blue ink, appearing to read 'MKBamford', written over a horizontal line.

Signature:

## **Executive Summary**

A Palaeontological Impact Assessment was requested for the proposed construction of a warehouse to store dangerous chemicals, southeast of Pietermaritzburg, KwaZulu Natal.

To comply with the regulations of the South African Heritage Resources Agency (SAHRA) in terms of Section 38(8) of the National Heritage Resources Act, 1999 (Act No. 25 of 1999) (NHRA), a desktop Palaeontological Impact Assessment (PIA) was completed for the proposed development.

The proposed site lies on the potentially fossiliferous Pietermaritzburg Formation (Ecca Group, Karoo Supergroup). Fossils and trace fossils are rare but a Fossil Chance Find Protocol should be added to the EMPr. Based on this information it is recommended that no further palaeontological impact assessment is required unless fossils are found by the developer, contractor, environmental officer other designated responsible person once excavations or drilling activities have commenced. As far as the palaeontology is concerned, the project should be authorised.

# Table of Contents

Expertise of Specialist .....	1
Declaration of Independence .....	1
1. Background .....	4
2. Methods and Terms of Reference.....	8
3. Geology and Palaeontology.....	8
i. Project location and geological context .....	8
ii. Palaeontological context.....	10
4. Impact assessment.....	11
5. Assumptions and uncertainties.....	12
6. Recommendation.....	12
7. References .....	13
8. Chance Find Protocol .....	13
9. Appendix A – Examples of fossils from the .....	14
10. Appendix B – Details of specialist.....	15
Figure 1: Google Earth map of the general area to show the relative land marks. ....	7
Figure 2: Google Earth Map of the proposed development .....	7
Figure 3: Geological map of the area around the project site.....	8
Figure 4: SAHRIS palaeosensitivity map for the site .....	10

# 1. Background

A palaeontological Impact assessment is required for the proposed construction of a warehouse for the storage of dangerous goods in southeastern Pietermaritzburg, Kwa-Zulu Natal Province.

The Applicant, R-Bay Properties (Pty) Ltd, is proposing to develop the R-Bay Properties Chemical Warehouse on Erf 2306 and 2307, Shortts Retreat, Pietermaritzburg (Figures 1-2).

R-Bay Properties (Pty) Ltd (R-Bay), a subsidiary of the Richbay Group of Companies (Richbay) proposes to construct a chemical warehouse for the storage of dangerous goods with a capacity of approximately 2 000 m<sup>3</sup>. The warehouse will be designed as a purpose built chemical warehousing structure.

The project will entail the clearance of (potentially indigenous) vegetation on a site of 9 955 m<sup>2</sup>, in Shortts Retreat, Pietermaritzburg. The warehousing will be used as an importation hub where chemicals (already packed and palletized) will be offloaded from shipping containers, and stored, prior to dispatch to Richbay facilities throughout Southern Africa. In addition, processed chemicals (already packed and palletized) will be stored prior to dispatch for international distribution. No processing or decanting will take place in the warehouse/s.

**Table 1: The chemicals will be stored inside the warehouse/s are provided below.**

MIXTURE NAME	CONTAINER TYPE	CONTAINER VOLUME (M3)	QUANTITY CONTAINERS (MAXIMUM)	TOTAL MAXIMUM CAPACITY (M3)
Hydrochloric Acid	HDPE	0.25	6000	1500
Acetic Acid	HDPE	0.25	200	50
Sodium Hypochlorite	HDPE	0.25	200	50
Sulphuric Acid	HDPE	0.25	200	50
Caustic Soda (Solid)	PP	0.025	8000	200
Caustic Soda Liquid	HDPE	0.25	200	50
Phosphoric Acid	HDPE	0.25	80	20
Nitric Acid	HDPE	0.25	100	25
Sodium Metabisulphite (Solid)	PP	0.025	100	2.5
Formaldehyde	HDPE	0.25	20	5
Ammonium 25%	HDPE	0.25	80	20
Sodium Chlorite 25-31%	HDPE	0.25	40	10

In addition to the warehouse, there will be ancillary services, including:

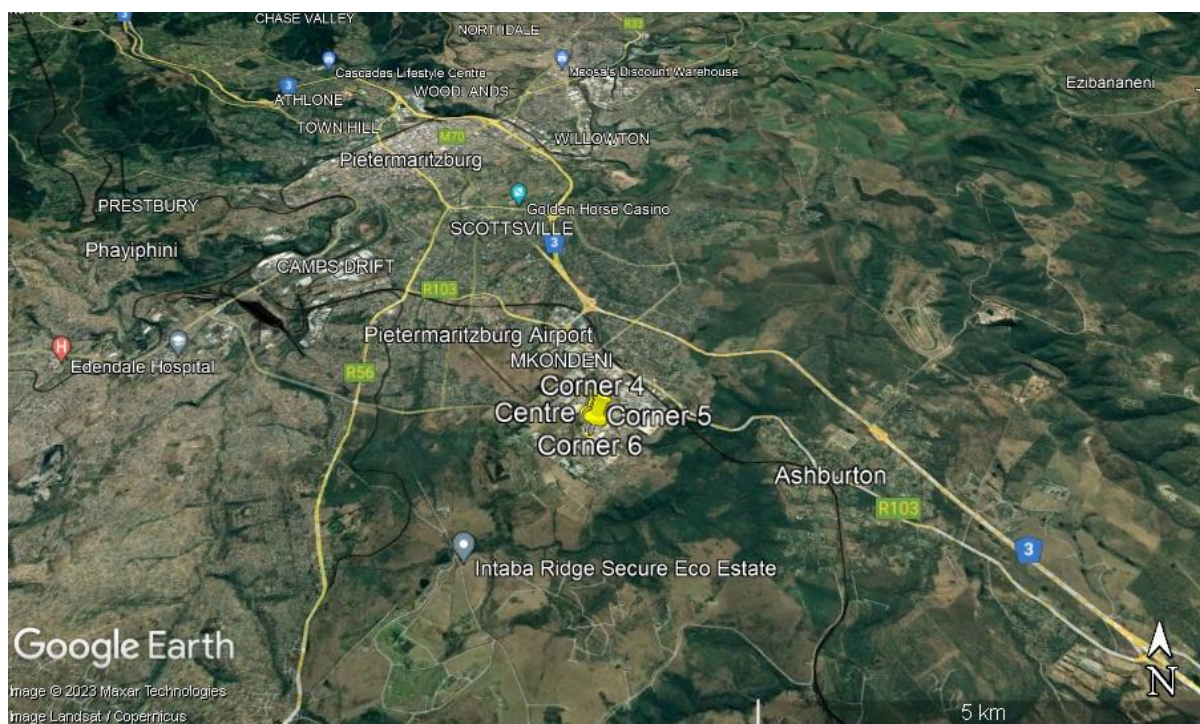
- Loading/off-loading bays;
- Security controlled entrance and exit;
- Parking bays;
- Offices;

A Palaeontological Impact Assessment was requested for the R-Bay Chemical warehouse project. To comply with the regulations of the South African Heritage Resources Agency (SAHRA) in terms of Section 38(8) of the National Heritage Resources Act, 1999 (Act No. 25 of 1999) (NHRA), a desktop Palaeontological Impact Assessment (PIA) was completed for the proposed development and is reported herein.

**Table 2: National Environmental Management Act, 1998 (Act No. 107 of 1998) (NEMA) and Environmental Impact Assessment (EIA) Regulations, 2014 (as amended) - Requirements for Specialist Reports (Appendix 6).**

	<b>A specialist report prepared in terms of the Environmental Impact Regulations of 2017 must contain:</b>	<b>Relevant section in report</b>
ai	Details of the specialist who prepared the report,	Appendix B
aii	The expertise of that person to compile a specialist report including a curriculum vitae	Appendix B
b	A declaration that the person is independent in a form as may be specified by the competent authority	Page 1
c	An indication of the scope of, and the purpose for which, the report was prepared	Section 1
ci	An indication of the quality and age of the base data used for the specialist report: SAHRIS palaeosensitivity map accessed – date of this report	Yes
cii	A description of existing impacts on the site, cumulative impacts of the proposed development and levels of acceptable change	Section 5
d	The date and season of the site investigation and the relevance of the season to the outcome of the assessment	N/A
e	A description of the methodology adopted in preparing the report or carrying out the specialised process	Section 2
f	The specific identified sensitivity of the site related to the activity and its associated structures and infrastructure	Section 4
g	An identification of any areas to be avoided, including buffers	N/A
h	A map superimposing the activity including the associated structures and infrastructure on the environmental sensitivities of the site including areas to be avoided, including buffers;	N/A
i	A description of any assumptions made and any uncertainties or gaps in knowledge;	Section 5
j	A description of the findings and potential implications of such findings on the impact of the proposed activity, including identified alternatives, on the environment	Section 4

	<b>A specialist report prepared in terms of the Environmental Impact Regulations of 2017 must contain:</b>	<b>Relevant section in report</b>
k	Any mitigation measures for inclusion in the EMPr	Section 8, Appendix A
l	Any conditions for inclusion in the environmental authorisation	N/A
m	Any monitoring requirements for inclusion in the EMPr or environmental authorisation	Section 8, Appendix A
ni	A reasoned opinion as to whether the proposed activity or portions thereof should be authorised	Section 6
nii	If the opinion is that the proposed activity or portions thereof should be authorised, any avoidance, management and mitigation measures that should be included in the EMPr, and where applicable, the closure plan	Sections 6, 8
o	A description of any consultation process that was undertaken during the course of carrying out the study	N/A
p	A summary and copies of any comments that were received during any consultation process	N/A
q	Any other information requested by the competent authority.	N/A
2	Where a government notice gazetted by the Minister provides for any protocol or minimum information requirement to be applied to a specialist report, the requirements as indicated in such notice will apply.	N/A





**Figure 1: Google Earth map of the general area to show the relative land marks. The R-Bay Chemicals warehouse is shown by the cluster of pins.**



**Figure 2: Google Earth Map of the proposed development of a warehouse for R-Bay Chemicals in Shortts Retreat, Pietermaritzburg shown by the pins.**

## 2. Methods and Terms of Reference

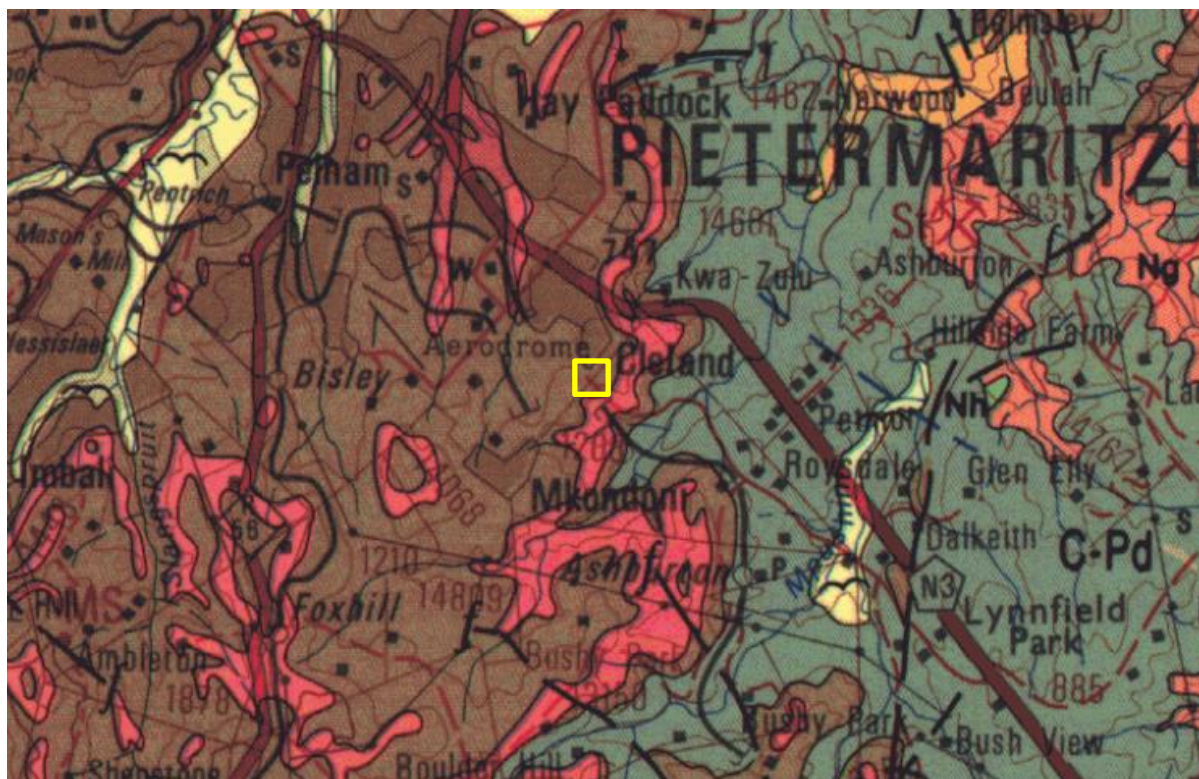
The Terms of Reference (ToR) for this study were to undertake a PIA and provide feasible management measures to comply with the requirements of SAHRA.

The methods employed to address the ToR included:

1. Consultation of geological maps, literature, palaeontological databases, published and unpublished records to determine the likelihood of fossils occurring in the affected areas. Sources included records housed at the Evolutionary Studies Institute at the University of the Witwatersrand and SAHRA databases;
2. Where necessary, site visits by a qualified palaeontologist to locate any fossils and assess their importance (*not applicable to this assessment*);
3. Where appropriate, collection of unique or rare fossils with the necessary permits for storage and curation at an appropriate facility (*not applicable to this assessment*); and
4. Determination of fossils' representivity or scientific importance to decide if the fossils can be destroyed or a representative sample collected (*not applicable to this assessment*).

### 3. Geology and Palaeontology

#### i. Project location and geological context



**Figure 3: Geological map of the area around southern Pietermatitzburg. The location of the proposed project is indicated within the yellow rectangle. Abbreviations of the rock types are explained in Table 3. Map enlarged from the Geological Survey 1: 250 000 map 2930 Durban.**

Table 3: Explanation of symbols for the geological map and approximate ages (Eriksson et al., 2006; Johnson et al., 2006; McCarthy et al., 2006; Robb et al., 2006; van der Westhuizen et al., 2006). SG = Supergroup; Fm = Formation; Ma = million years; grey shading = formations impacted by the project.

Symbol	Group/Formation	Lithology	Approximate Age
Q	Quaternary	Alluvium, sand, calcrete	Neogene, ca 2.5 Ma to present
Jd	Jurassic dykes	Dolerite dykes, intrusive	Jurassic, approx. 180 Ma
Pv	Vryheid Fm, Ecca Group, Karoo SG	Shales, sandstone, coal	Early Permian, Middle Ecca
Pp	Pietermaritzburg Fm, Ecca Group, Karoo SG	Dark grey, shales, siltstone	Early Permian, Lower Ecca

The project lies in the southeastern margin of the Karoo Basin where the early Karoo sediments unconformably overlie the Natal Group rocks (Figure 3).

The Karoo Supergroup rocks cover a very large proportion of South Africa and extend from the northeast (east of Pretoria) to the southwest and across to almost the KwaZulu Natal south coast. It is bounded along the southern margin by the Cape Fold Belt and along the northern margin by the much older Transvaal Supergroup rocks. Representing some 120 million years (300 – 183Ma), the Karoo Supergroup rocks have preserved a diversity of fossil plants, insects, vertebrates and invertebrates.

During the Carboniferous Period South Africa was part of the huge continental landmass known as Gondwanaland and it was positioned over the South Pole. As a result, there were several ice sheets that formed and melted, and covered most of South Africa (Visser, 1986, 1989; Isbell et al., 2012). Gradual melting of the ice as the continental mass moved northwards and the earth warmed, formed fine-grained sediments in the large inland sea. These are the oldest rocks in the system and are exposed around the outer part of the ancient Karoo Basin, and are known as the Dwyka Group. They comprise tillites, diamictites, mudstones, siltstones and sandstones that were deposited as the basin filled. This group has been divided into two formations with Elandsvlei Formation occurring throughout the basin and the upper Mbizane Formation occurring only in the Free State and KwaZulu Natal (Johnson et al., 2006).

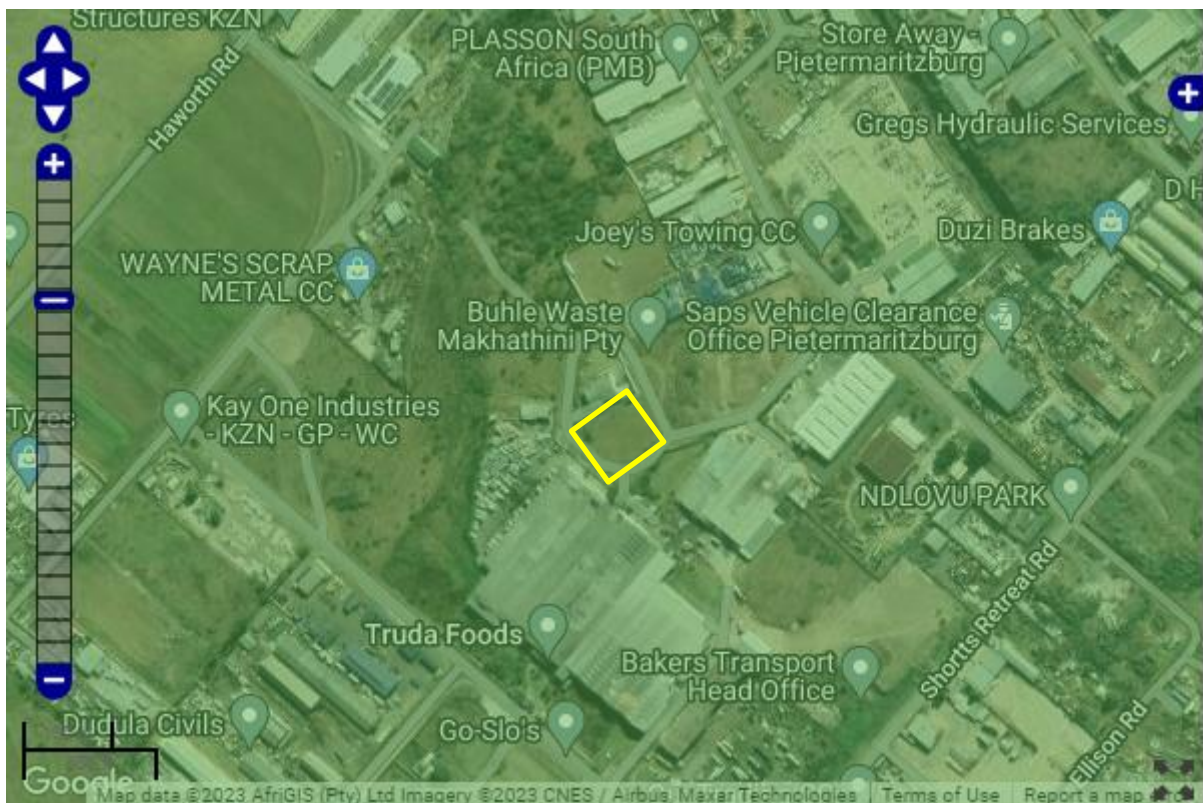
Overlying the Dwyka Group rocks are rocks of the Ecca Group that are Early Permian in age. There are eleven formations recognised in this group but they do not all extend throughout the Karoo Basin. In the west and central part are the following formations, from base upwards: Prince Albert Formation, Whitehill Formation, Collingham Formation, Laingsburg / Ripon Formations, Tierberg / Fort Brown Formations, and Waterford Formation. In the Free State and KwaZulu Natal, from the base upwards are the **Pietermaritzburg Formation**, Vryheid Formation and the Volksrust Formation. All of these sediments have varying proportions of sandstones, mudstones, shales and siltstones and represent shallow to deep water settings, deltas, rivers, streams and overbank depositional environments.

Overlying the Ecca Group are the rocks of the Beaufort Group that has been divided into the lower Adelaide Subgroup for the Upper Permian strata, and the Tarkastad Subgroup for the Early to Middle Triassic strata. As with the older Karoo sediments, the formations vary across the Karoo Basin. Beaufort and Stormberg Groups complete the Karoo sequence but are not present in this region.

Large exposures of Jurassic dolerite dykes occur throughout the area. These intruded through the Karoo sediments around 183 million years ago at about the same time as the Drakensberg basaltic eruption.

## ii. Palaeontological context

The palaeontological sensitivity of the area under consideration is presented in Figure 4. The site for development is in the Pietermaritzburg Formation.



**Figure 4: SAHRIS palaeosensitivity map for the site for the proposed R-Bay Chemicals warehouse shown by the yellow outline. Background colours indicate the following degrees of sensitivity: red = very highly sensitive; orange/yellow = high; green = moderate; blue = low; grey = insignificant/zero.**

In the central and eastern part of the Karoo Basin, the Ecca Group is represented by three formations, the basal Pietermaritzburg Formation, the coal-rich Vryheid Formation and the upper Volksrust Formation.

The basal Pietermaritzburg Formation is composed of dark silty mudrock that coarsens upwards with bioturbated and deformed sandy and silty beds at the top of the sequence (Johnson et al., 2006). This formation represents a major post-glacial transgression where carbonate concretions have formed sub-aqueously along an unstable shelf. The upper coarser sediments represent a pro-grading shoreline (Johnson et al., 2006). Trace fossils of invertebrates are present in the upper sediments along the ancient shorelines (Bordy et al., 2017).

#### 4. Impact assessment

An assessment of the potential impacts to possible palaeontological resources considers the criteria encapsulated in Table 3:

**Table 3a: Criteria for assessing impacts**

<b>PART A: DEFINITION AND CRITERIA</b>		
<b>Criteria for ranking of the SEVERITY/NATURE of environmental impacts</b>	<b>H</b>	Substantial deterioration (death, illness or injury). Recommended level will often be violated. Vigorous community action.
	<b>M</b>	Moderate/ measurable deterioration (discomfort). Recommended level will occasionally be violated. Widespread complaints.
	<b>L</b>	Minor deterioration (nuisance or minor deterioration). Change not measurable/ will remain in the current range. Recommended level will never be violated. Sporadic complaints.
	<b>L+</b>	Minor improvement. Change not measurable/ will remain in the current range. Recommended level will never be violated. Sporadic complaints.
	<b>M+</b>	Moderate improvement. Will be within or better than the recommended level. No observed reaction.
	<b>H+</b>	Substantial improvement. Will be within or better than the recommended level. Favourable publicity.
<b>Criteria for ranking the DURATION of impacts</b>	<b>L</b>	Quickly reversible. Less than the project life. Short term
	<b>M</b>	Reversible over time. Life of the project. Medium term
	<b>H</b>	Permanent. Beyond closure. Long term.
<b>Criteria for ranking the SPATIAL SCALE of impacts</b>	<b>L</b>	Localised - Within the site boundary.
	<b>M</b>	Fairly widespread – Beyond the site boundary. Local
	<b>H</b>	Widespread – Far beyond site boundary. Regional/ national
<b>PROBABILITY (of exposure to impacts)</b>	<b>H</b>	Definite/ Continuous
	<b>M</b>	Possible/ frequent
	<b>L</b>	Unlikely/ seldom

**Table 3b: Impact Assessment**

<b>PART B: Assessment</b>		
<b>SEVERITY/NATURE</b>	<b>H</b>	-
	<b>M</b>	-
	<b>L</b>	Soils do not preserve fossils; so far there are no records from the Pietermaritzburg Fm of plant or animal fossils in this region so it is very unlikely that fossils occur on the site. The impact would be negligible
	<b>L+</b>	-
	<b>M+</b>	-
	<b>H+</b>	-
	<b>DURATION</b>	<b>L</b>
<b>M</b>		-
<b>H</b>		Where manifest, the impact will be permanent.

<b>PART B: Assessment</b>		
<b>SPATIAL SCALE</b>	<b>L</b>	Since the only possible fossils within the area would be trace fossils such as burrows or fragments in the shales, the spatial scale will be localised within the site boundary.
	<b>M</b>	-
	<b>H</b>	-
<b>PROBABILITY</b>	<b>H</b>	-
	<b>M</b>	-
	<b>L</b>	It is extremely unlikely that any fossils would be found in the loose soils and sands that cover the area or in the Pietermaritzburg Fm deepwater shales that will be excavated. Nonetheless, a Fossil Chance Find Protocol should be added to the eventual EMPr.

Based on the nature of the project, surface activities may impact upon the fossil heritage if preserved in the development footprint. The geological structures suggest that the rocks are the correct age to contain fossils but they are deep water to shallow water deposits in an inland sea. However, the material to be excavated for foundations and amenities are disturbed soils and these do not preserve fossils. Since there is a very small chance that trace fossils from the Pietermaritzburg Formation may be disturbed a Fossil Chance Find Protocol has been added to this report. Taking account of the defined criteria, the potential impact to fossil heritage resources is extremely low.

## 5. Assumptions and uncertainties

Based on the geology of the area and the palaeontological record as we know it, it can be assumed that the formation and layout of the dolomites, sandstones, shales and sands are typical for the country and might contain trace fossils of invertebrates, but none has been reported from this site. The soils and sands of the Quaternary period would not preserve fossils.

## 6. Recommendation

Based on experience and the lack of any previously recorded fossils from the area, it is extremely unlikely that any fossils would be preserved in the Pietermaritzburg Formation or the soils of the Quaternary. There is a very small chance that fossils may occur below ground in the shales of the early Permian Pietermaritzburg Formation so a Fossil Chance Find Protocol should be added to the EMPr. If fossils are found by the contractor, environmental officer or other responsible person once excavations have commenced then they should be rescued and a palaeontologist called to assess and collect a representative sample. The impact on the palaeontological heritage would be low so, as far as the palaeontology is concerned, the project should be authorised.

## 7. References

Anderson, J.M., Anderson, H.M., 1985. Palaeoflora of Southern Africa: Prodrum of South African megafloras, Devonian to Lower Cretaceous. A.A. Balkema, Rotterdam. 423 pp.

Bordy, E.M., Spelman, S., Cole, D.I., Mthembu, P., 2017. Lithostratigraphy of the Pietermaritzburg Formation (Ecca Group, Karoo Supergroup), South Africa. South African Journal of Geology 120, 293-302.

Johnson, M.R., van Vuuren, C.J., Visser, J.N.J., Cole, D.I., Wickens, H.deV., Christie, A.D.M., Roberts, D.L., Brandl, G., 2006. Sedimentary rocks of the Karoo Supergroup. In: Johnson, M.R., Anhaeusser, C.R. and Thomas, R.J., (Eds). The Geology of South Africa. Geological Society of South Africa, Johannesburg / Council for Geoscience, Pretoria. Pp 461 – 499.

Plumstead, E.P., 1969. Three thousand million years of plant life in Africa. Geological Society of southern Africa, Annexure to Volume LXXII. 72pp + 25 plates.

## 8. Chance Find Protocol

### **Monitoring Programme for Palaeontology – to commence once the excavations / drilling activities begin.**

1. The following procedure is only required if fossils are seen on the surface and when drilling/excavations commence.
2. When excavations begin the rocks and must be given a cursory inspection by the environmental officer or designated person. Any fossiliferous material (trace fossils, fossil plants, insects, bone, coal) should be put aside in a suitably protected place. This way the project activities will not be interrupted.
3. Photographs of similar fossils must be provided to the developer to assist in recognizing the fossil plants, vertebrates, invertebrates or trace fossils in the shales and mudstones (for example see Figure 5). This information will be built into the EMP's training and awareness plan and procedures.
4. Photographs of the putative fossils can be sent to the palaeontologist for a preliminary assessment.
5. If there is any possible fossil material found by the developer/environmental officer then the qualified palaeontologist sub-contracted for this project, should visit the site to inspect the selected material and check the dumps where feasible.
6. Fossil plants or vertebrates that are considered to be of good quality or scientific interest by the palaeontologist must be removed, catalogued and housed in a suitable institution where they can be made available for further study. Before the fossils are removed from the site an AMAFA or SAHRA

permit must be obtained. Annual reports must be submitted to AMAFA and SAHRA as required by the relevant permits.

7. If no good fossil material is recovered then no site inspections by the palaeontologist will be necessary. A final report by the palaeontologist must be sent to AMAFA and SAHRA once the project has been completed and only if there are fossils.
8. If no fossils are found and the excavations have finished then no further monitoring is required.

## 9. Appendix A – Examples of fossils from the Ecca Group.



**Figure 5: Some photographs of trace fossils from the Ecca Group, Early Permian, shallow water settings.**



## 10. Appendix B – Details of specialist

### **Curriculum vitae (short) - Marion Bamford PhD January 2023**

Present employment: University of the Witwatersrand,  
Johannesburg, South Africa  
Telephone : +27 11 717 6690  
Cell : 082 555 6937  
E-mail : [marion.bamford@wits.ac.za](mailto:marion.bamford@wits.ac.za) ;  
[marionbamford12@gmail.com](mailto:marionbamford12@gmail.com)

#### **ii) Academic qualifications**

Tertiary Education: All at the University of the Witwatersrand:

1980-1982: BSc, majors in Botany and Microbiology. Graduated April 1983.

1983: BSc Honours, Botany and Palaeobotany. Graduated April 1984.

1984-1986: MSc in Palaeobotany. Graduated with Distinction, November 1986.

1986-1989: PhD in Palaeobotany. Graduated in June 1990.

#### **iii) Professional qualifications**

*Wood Anatomy Training (overseas as nothing was available in South Africa):*

1994 - Service d'Anatomie des Bois, Musée Royal de l'Afrique Centrale, Tervuren, Belgium, by Roger Dechamps

1997 - Université Pierre et Marie Curie, Paris, France, by Dr Jean-Claude Koeniguer

1997 - Université Claude Bernard, Lyon, France by Prof Georges Barale, Dr Jean-Pierre Gros, and Dr Marc Philippe

#### **iv) Membership of professional bodies/associations**

Palaeontological Society of Southern Africa

Royal Society of Southern Africa - Fellow: 2006 onwards

Academy of Sciences of South Africa - Member: Oct 2014 onwards

International Association of Wood Anatomists - First enrolled: January 1991

International Organization of Palaeobotany - 1993+

Botanical Society of South Africa

South African Committee on Stratigraphy – Biostratigraphy - 1997 - 2016

SASQUA (South African Society for Quaternary Research) – 1997+

PAGES - 2008 –onwards: South African representative

ROCEEH / WAVE – 2008+

INQUA – PALCOMM – 2011+onwards

#### **v) Editing and reviewing**

Editor: *Palaeontologia africana*: 2003 to 2013; 2014 – Assistant editor

Guest Editor: *Quaternary International*: 2005 volume

Member of Board of Review: *Review of Palaeobotany and Palynology*: 2010 –

Associate Editor: *Cretaceous Research*: 2018-2020

Associate Editor: *Royal Society Open*: 2021 -

Review of manuscripts for ISI-listed journals: 30 local and international journals

**vi) Palaeontological Impact Assessments**

25 years' experience in PIA site and desktop projects

- Selected from recent projects only – list not complete:
- Skeerpoort Farm Mast 2020 for HCAC
- Vulindlela Eco village 2020 for 1World
- KwaZamakhule Township 2020 for Kudzala
- Sunset Copper 2020 for Digby Wells
- McCarthy-Salene 2020 for Prescali
- VLNR Lodge 2020 for HCAC
- Madadeni mixed use 2020 for EnviroPro
- Frankfort-Windfield Eskom Powerline 2020 for 1World
- Beaufort West PV Facility 2021 for ACO Associates
- Copper Sunset MR 2021 for Digby Wells
- Sannaspos PV facility 2021 for CTS Heritage
- Smithfield-Rouxville-Zastron PL 2021 for TheroServe
- Glosam Mine 2022 for AHSA
- Wolf-Skilpad-Grassridge OHPL 2022 for Zutari
- Iziduli and Msenge WEFs 2022 for CTS Heritage
- Hendrina North and South WEFs & SEFs 2022 for Cabanga
- Dealesville-Springhaas SEFs 2022 for GIBB Environmental
- Vhuvhili and Mukondeleli SEFs 2022 for CSIR
- Chemwes & Stilfontein SEFs 2022 for CTS Heritage
- Equestria Exts housing 2022 for Beyond Heritage
- Zeerust Salene boreholes 2022 for Prescali
- Tsakane Sewer upgrade 2022 for Tsimba
- Transnet MPP inland and coastal 2022 for ENVASS
- Ruighoek PRA 2022 for SLR Consulting (Africa)
- Namli MRA Steinkopf 2022 for Beyond Heritage

**vii) Research Output**

Publications by M K Bamford up to January 2023 peer-reviewed journals or scholarly books: over 170 articles published; 5 submitted/in press; 14 book chapters.

Scopus h-index = 31 Google Scholar h-index = 39; -i10-index = 116 based on 6568 citations.

Conferences: numerous presentations at local and international conferences.

.