

Figure 1: Locality map showing the grid extension connection corridor proposed for the development of the grid connection extension infrastructure for the authorised Gunstfontein Wind Farm.

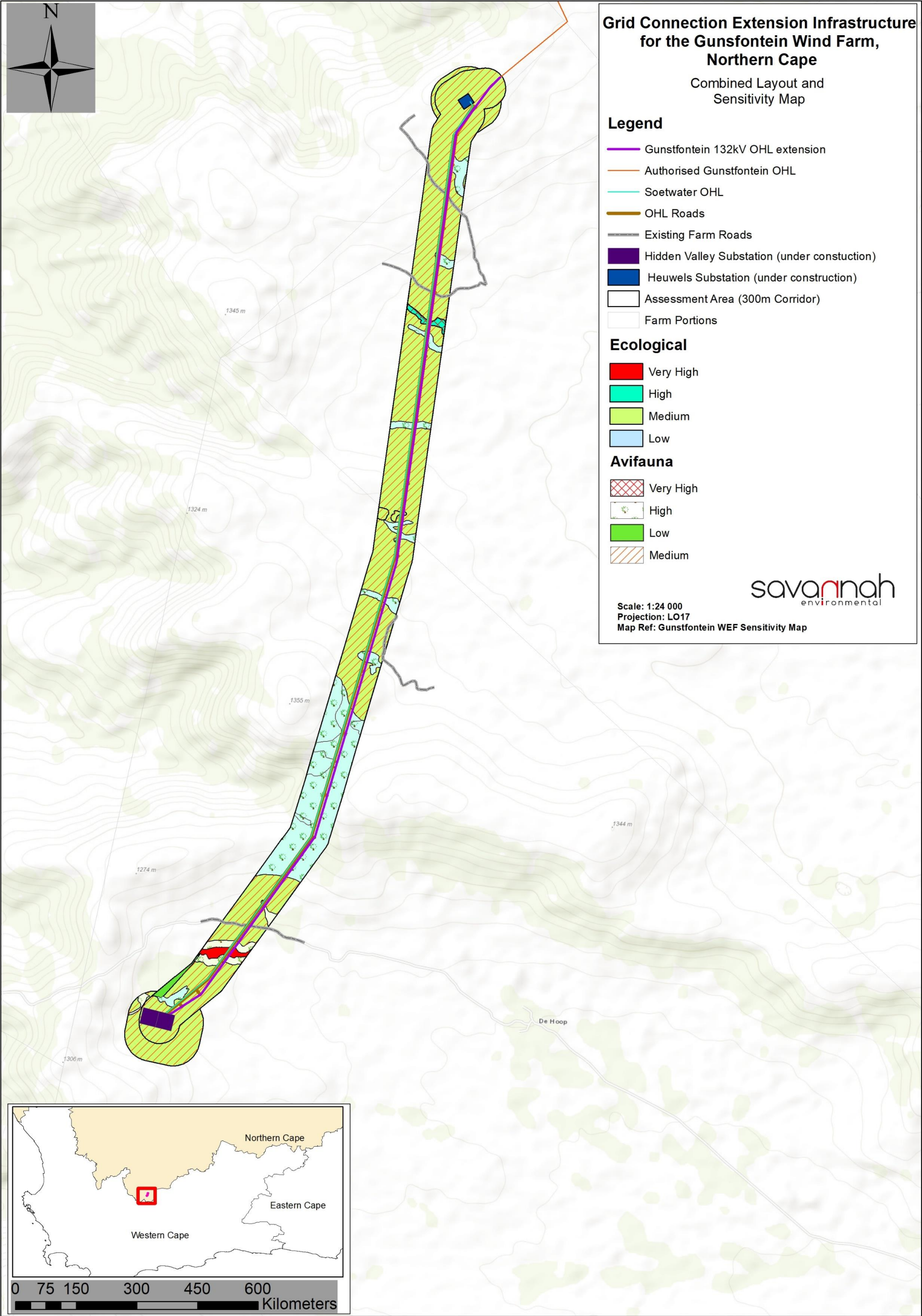


Figure 2: Environmental sensitivity map for the proposed corridor. Please refer to the figures in section 5.8 for all the historical maps.

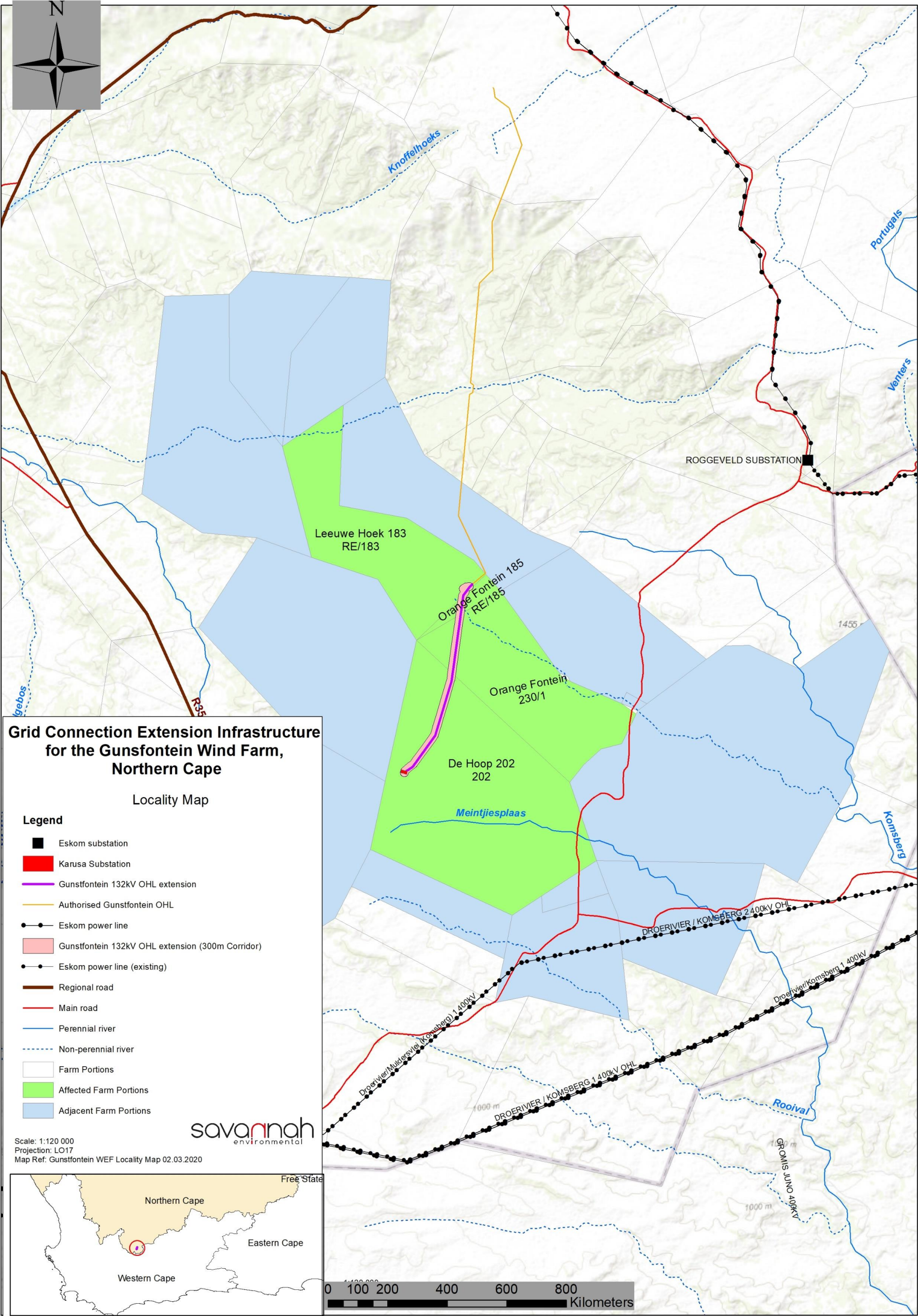


Figure 1.1: Locality map showing the grid connection corridor for the authorised Gunstfontein Wind Farm (refer to Appendix H for A3 map).

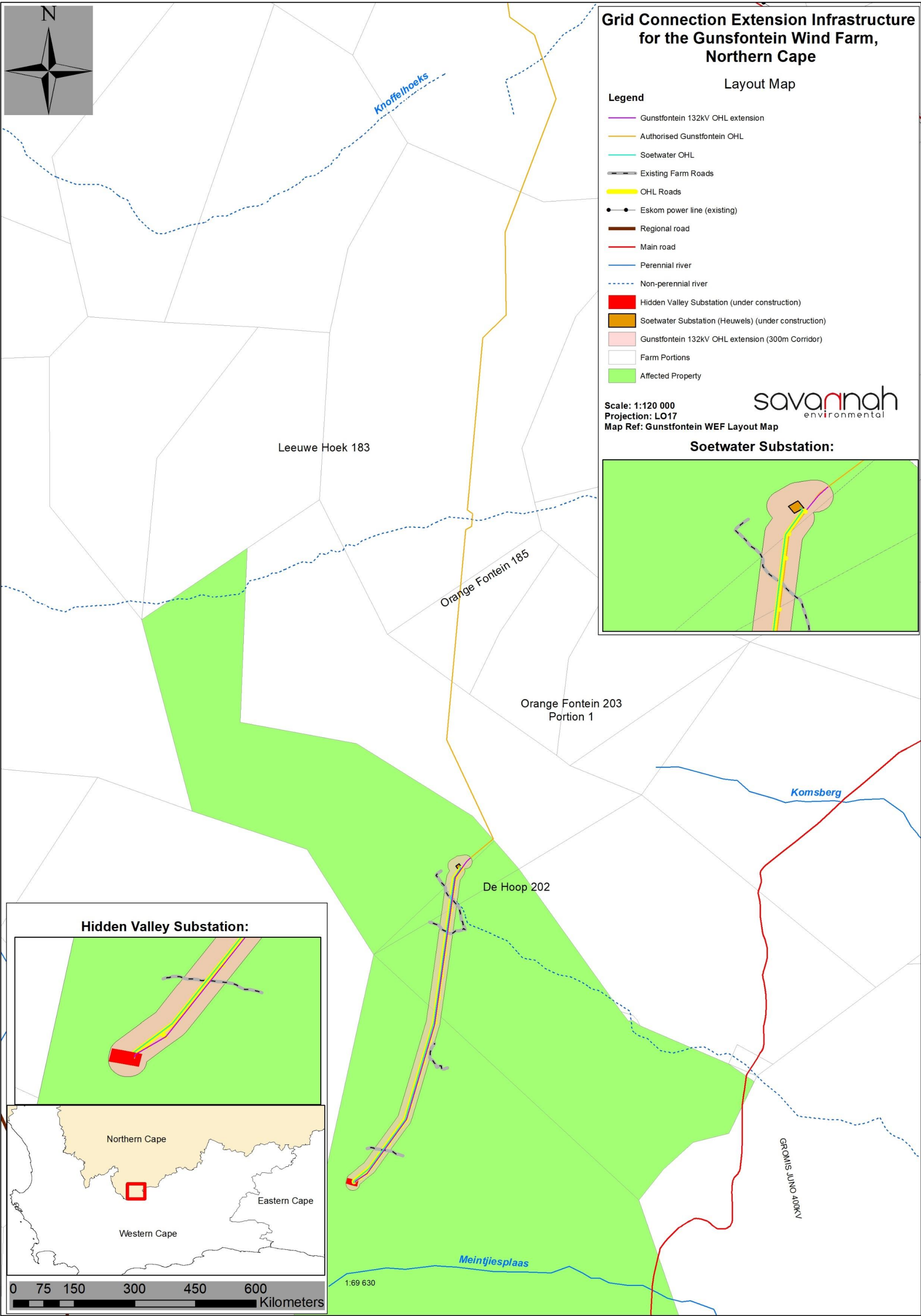


Figure 2.2: Grid connection corridor associated with the extension of the grid connection solution for the Gunstfontein Wind Farm (refer to Appendix H for A3 map)

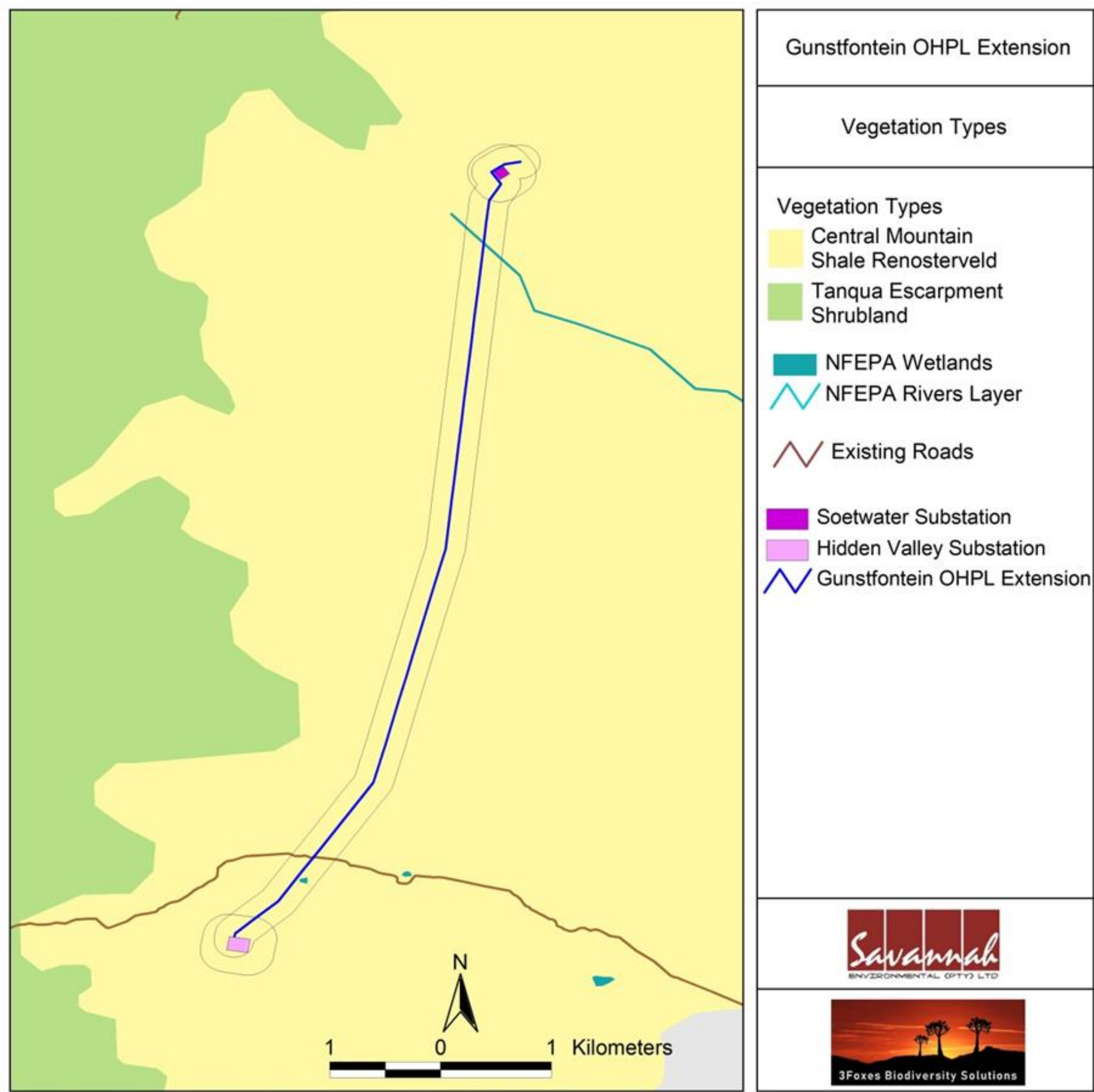


Figure 5.3: Broad-scale overview of the vegetation in and around the Gunstfontein WEF Grid Connection. The vegetation map is an extract of the national vegetation map (Mucina & Rutherford 2006 & 2016 update) and also includes drainage lines delineated by the NFEPA assessment (Nel et al. 2011).

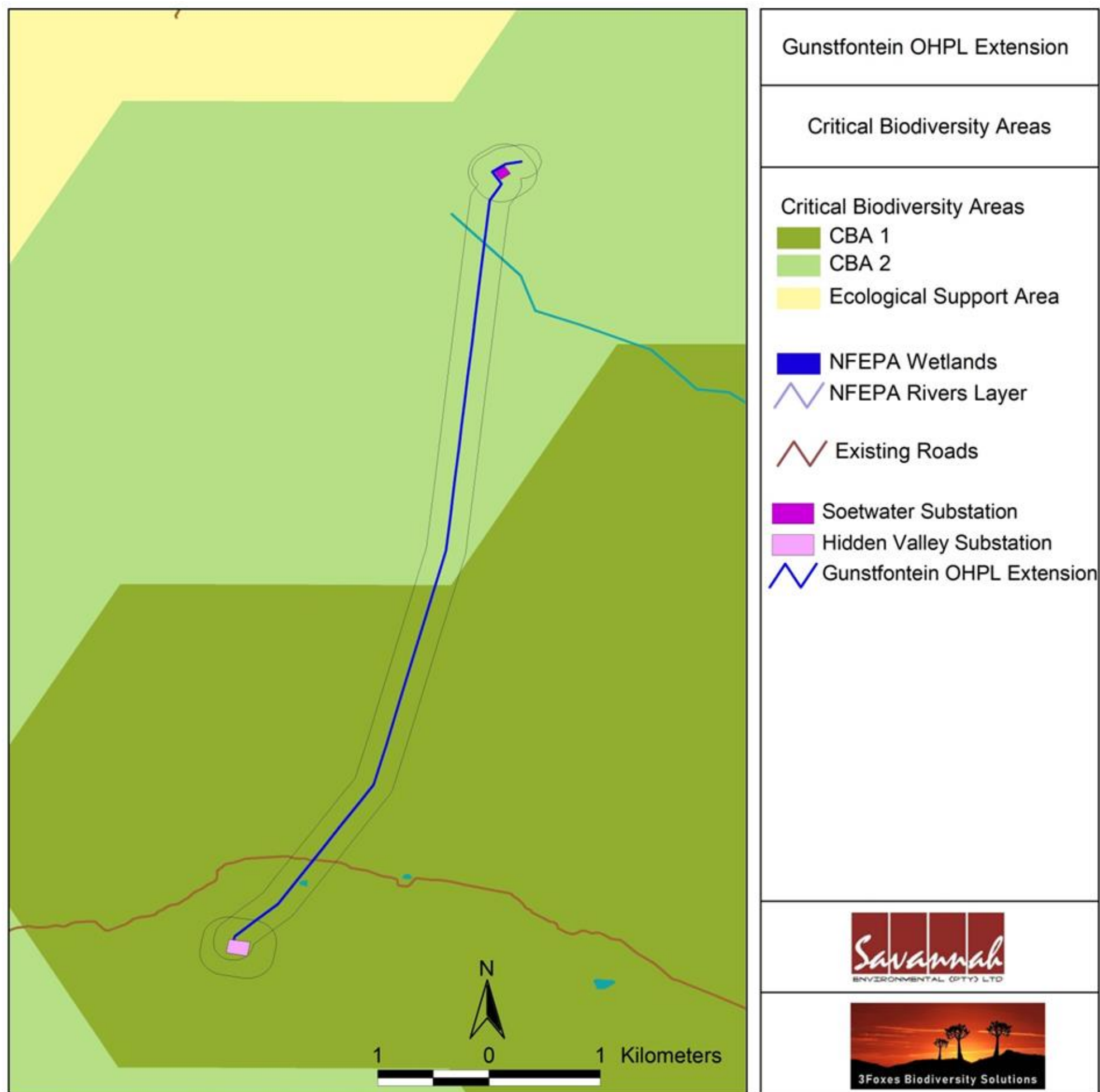


Figure 5.4. Extract of the Northern Cape Critical Biodiversity Areas map for the broader study area, showing that the power line occurs within areas classified as CBA 1 and CBA 2.

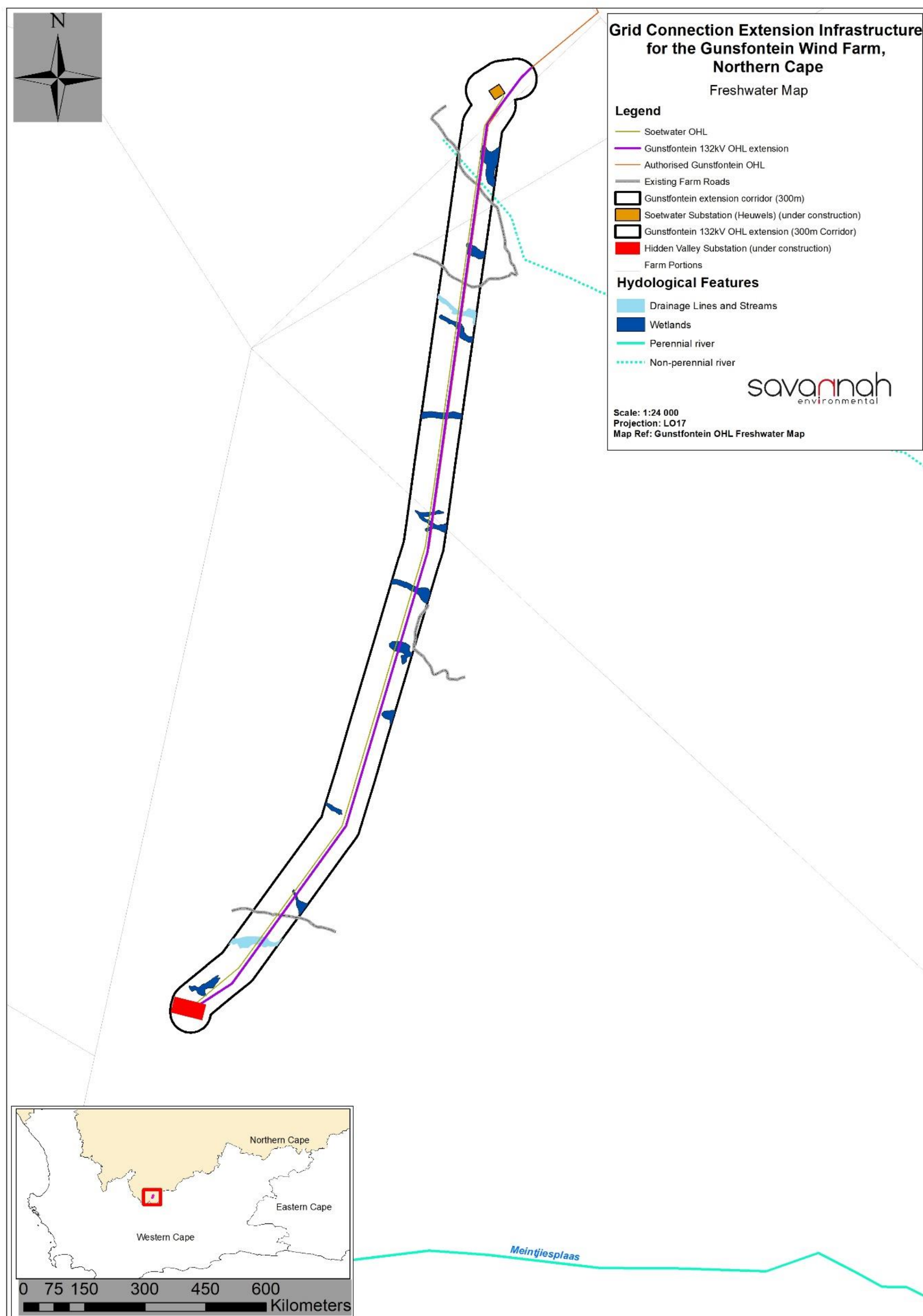


Figure 5.6: A freshwater features map for the proposed corridor based on the ecological field assessment conducted by Simon Todd (2020).

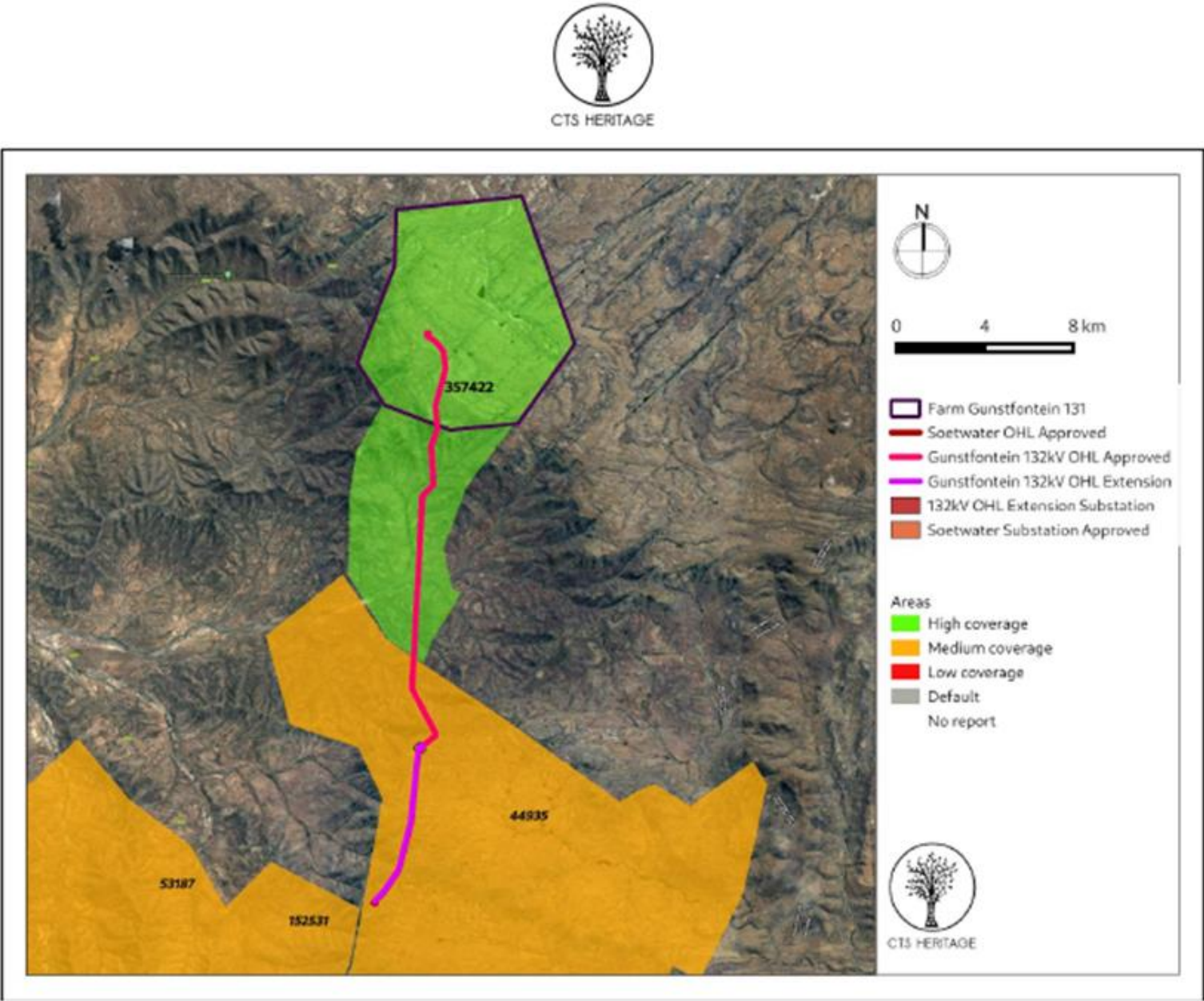


Figure 2. Previous HIAs Map. Previous Heritage Impact Assessments covering the proposed development area with SAHRIS NIDS indicated. Please see Appendix 2 for full reference list.

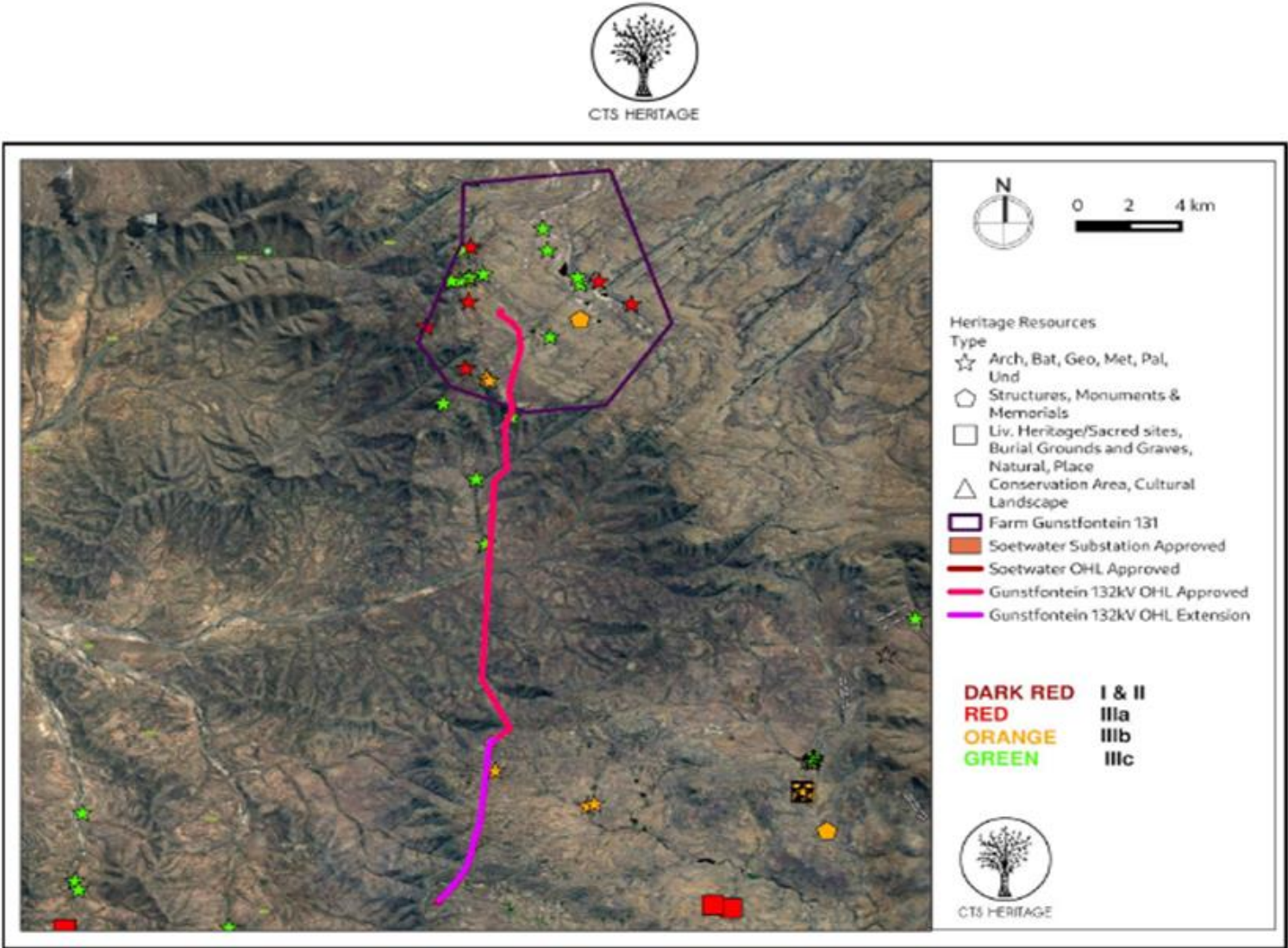


Figure 3. Heritage Resources Map. Heritage Resources previously identified within the study area, with SAHRIS Site IDs indicated in the insets below. Please See Appendix 4 for full description of heritage resource types.

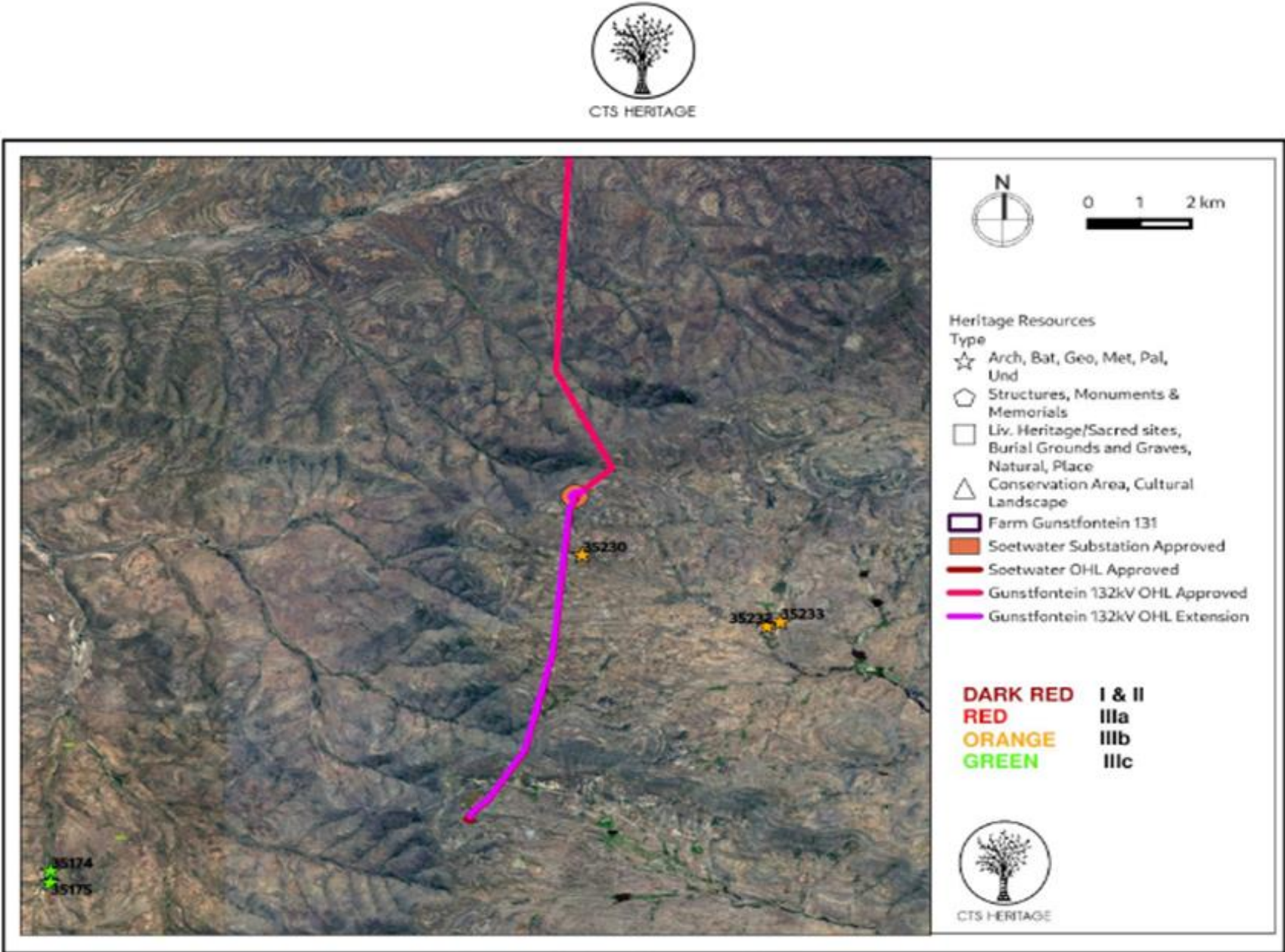


Figure 3a. Heritage Resources Map. Inset

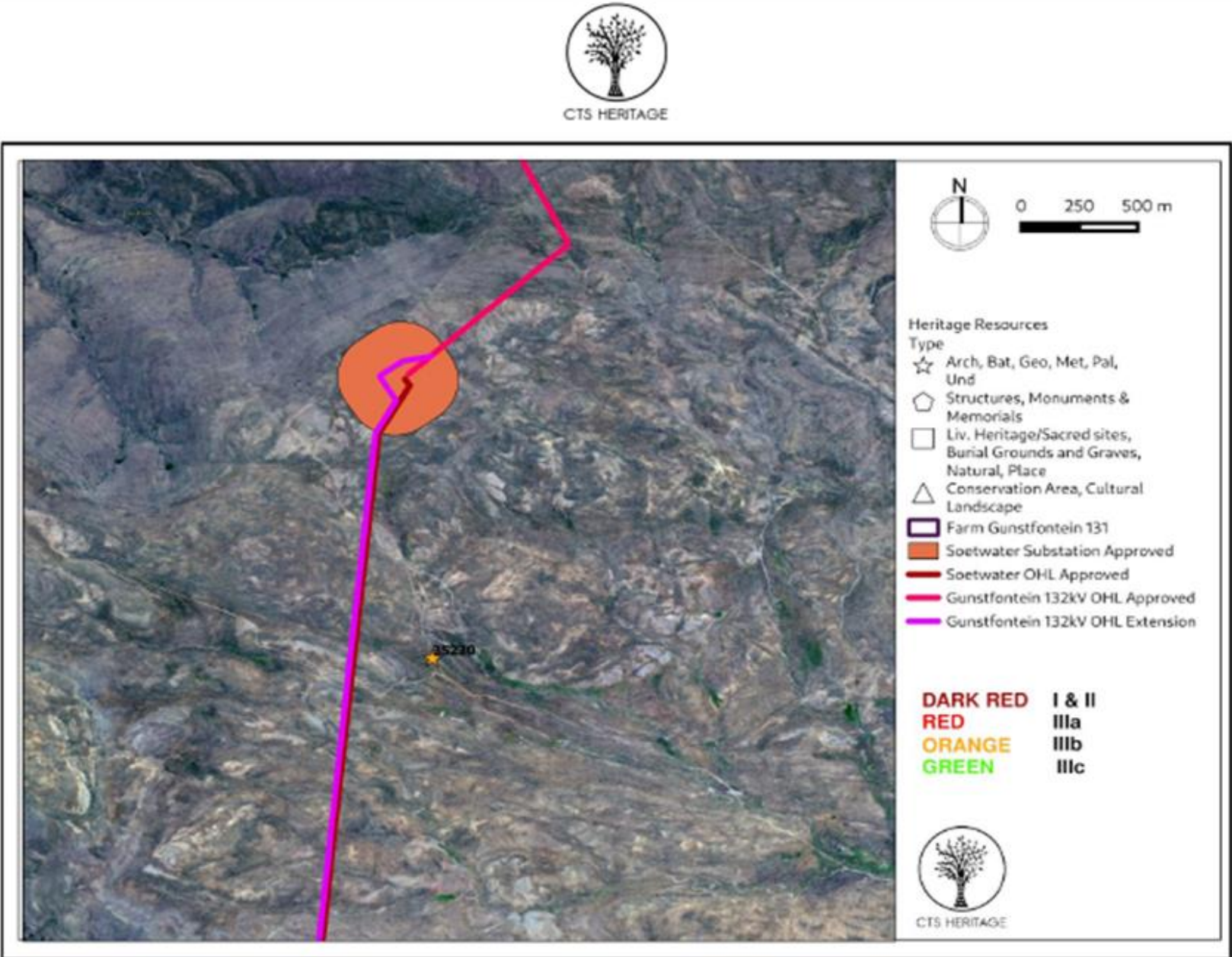


Figure 3b. Heritage Resources Map. Inset

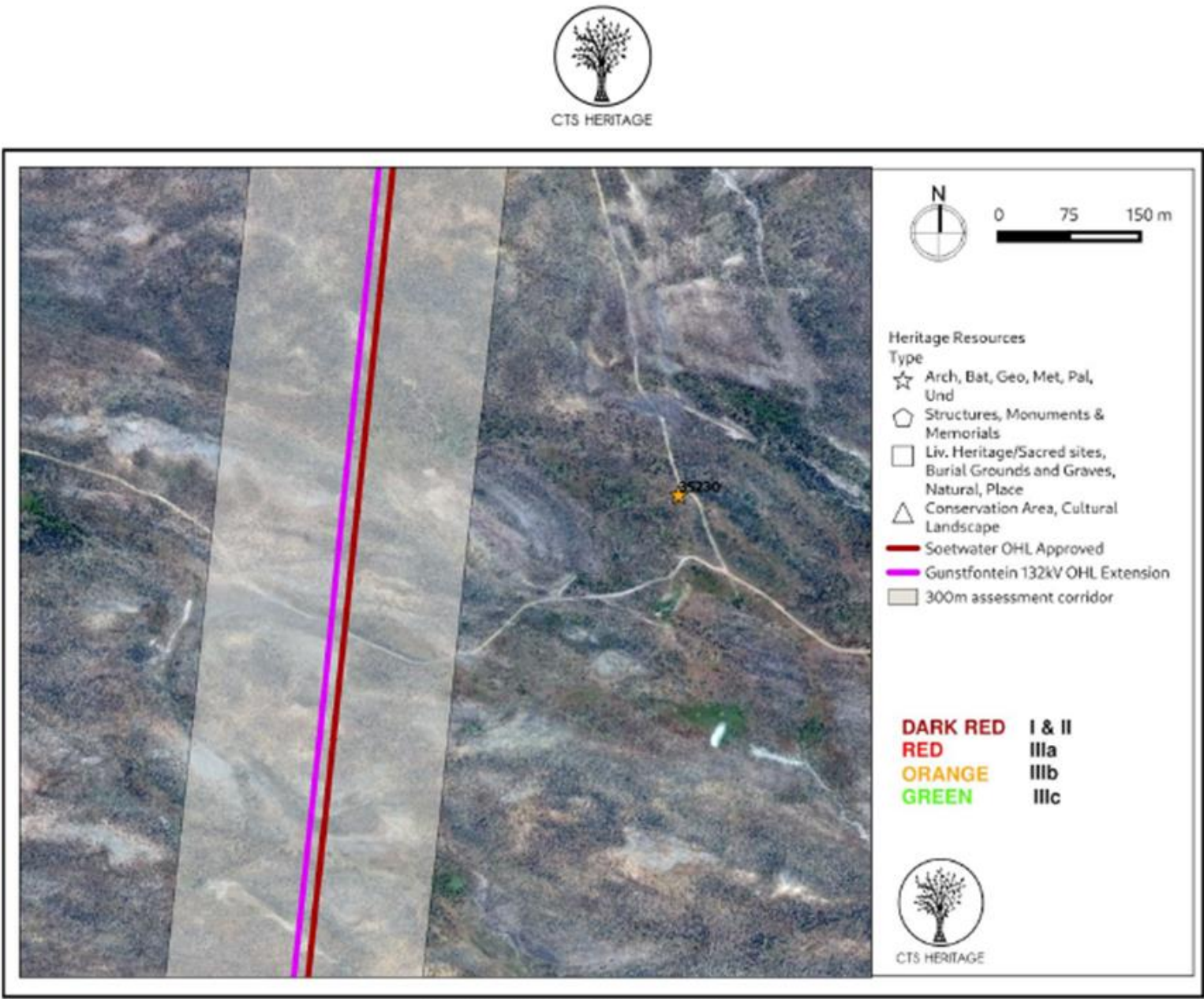


Figure 3c. Heritage Resources Map. Inset

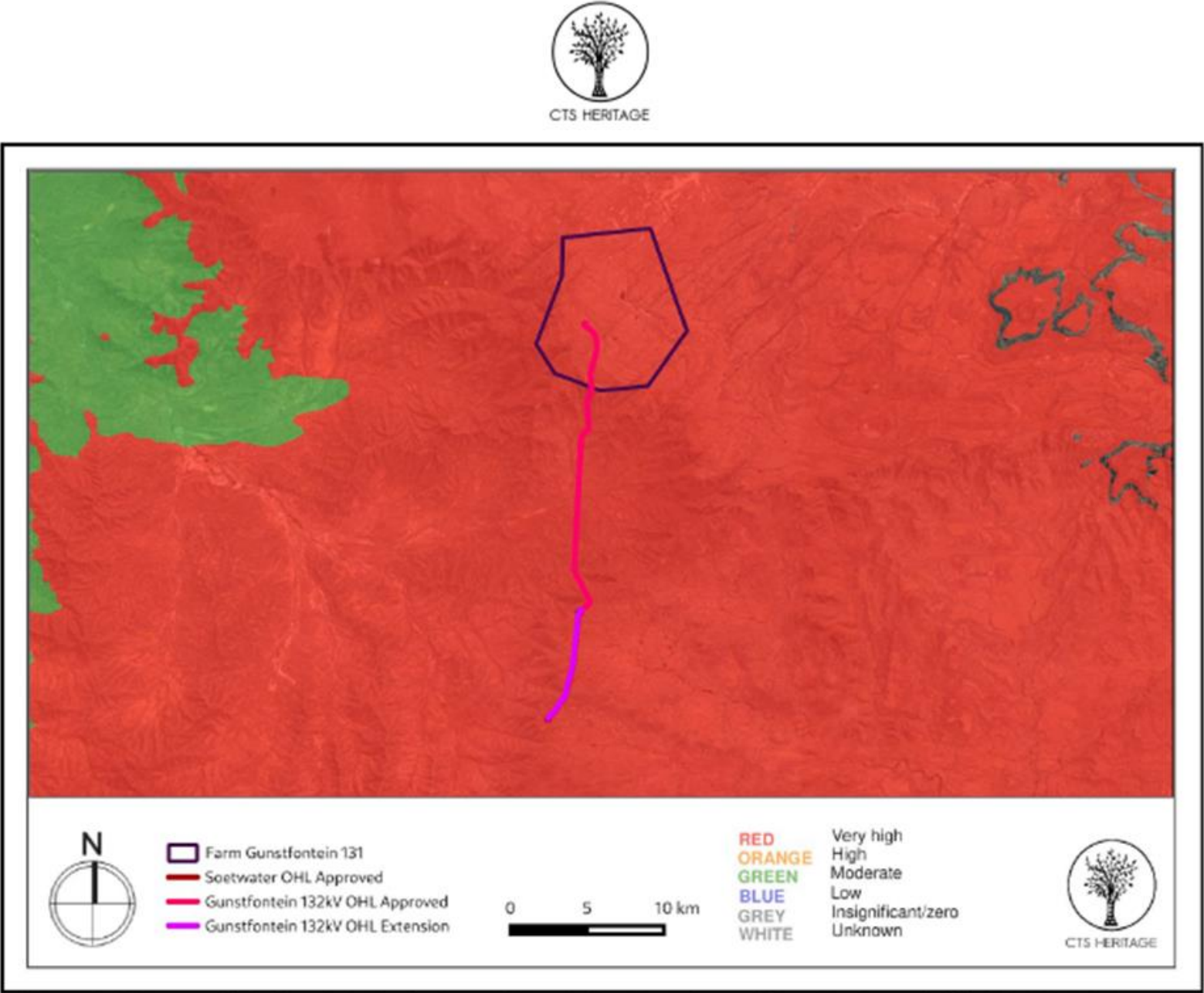


Figure 4a. Palaeosensitivity Map. Indicating fossil sensitivity underlying the study area. Please See Appendix 3 for full guide to the legend.

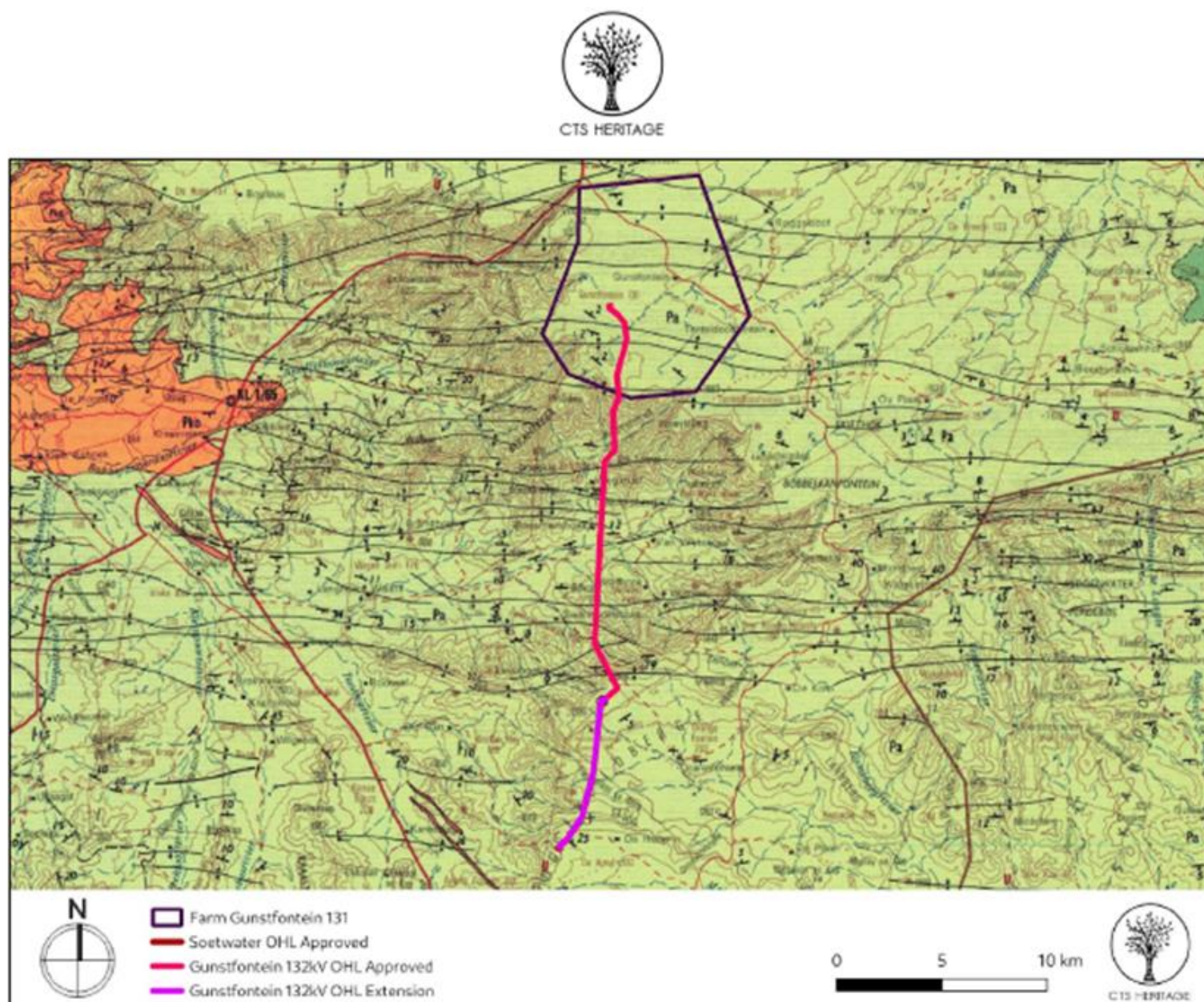


Figure 4b. Geology Map. Extract from the CGS 3220 Sutherland Map indicating that the development area is underlain by sediments of the Karoo Supergroup assigned to the Beaufort group, within the Abrahamskraal Formation of the Adelaide Subgroup.

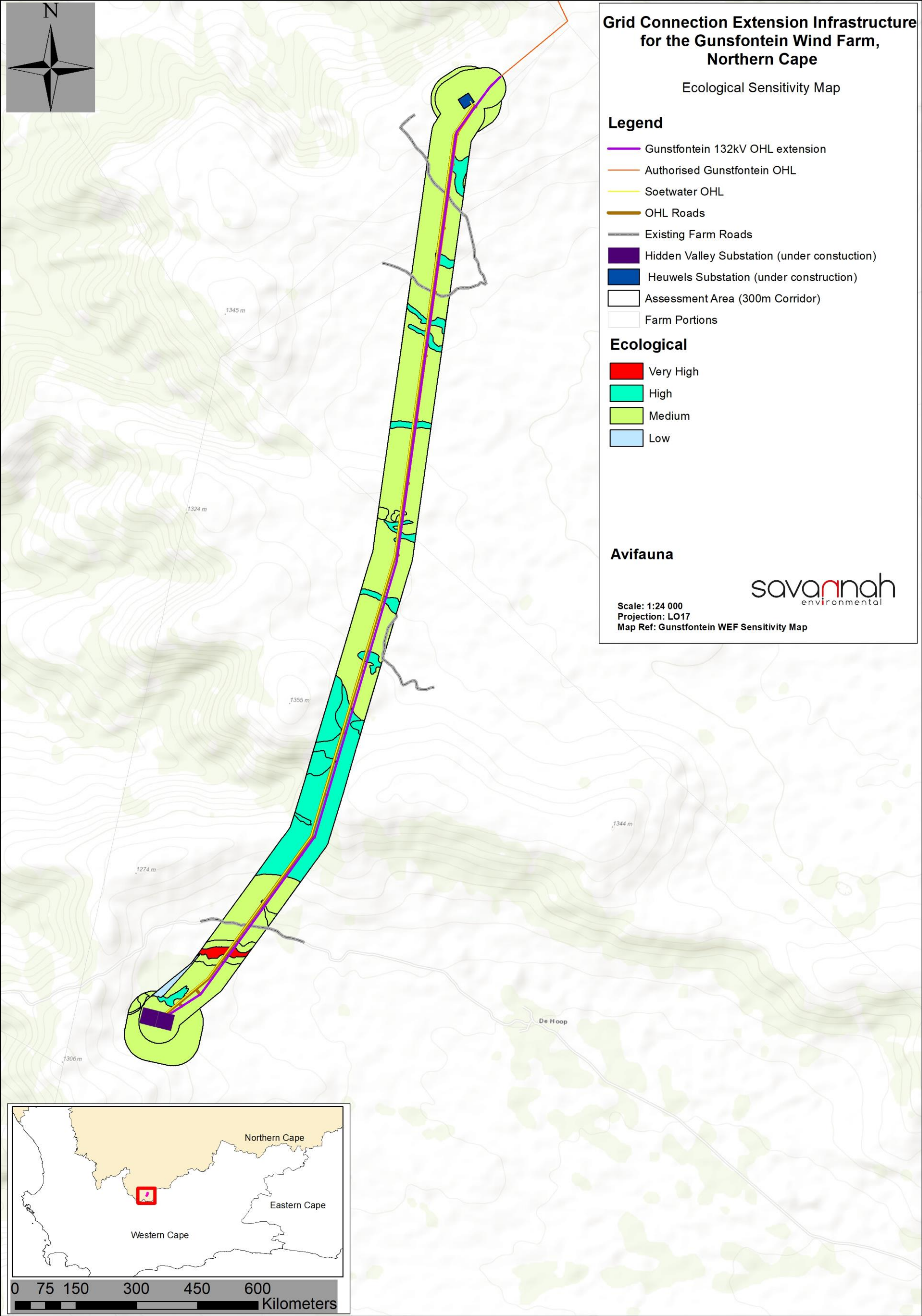


Figure 6.1: Sensitivity map for the Gunstfontein WEF Grid Extension corridor.

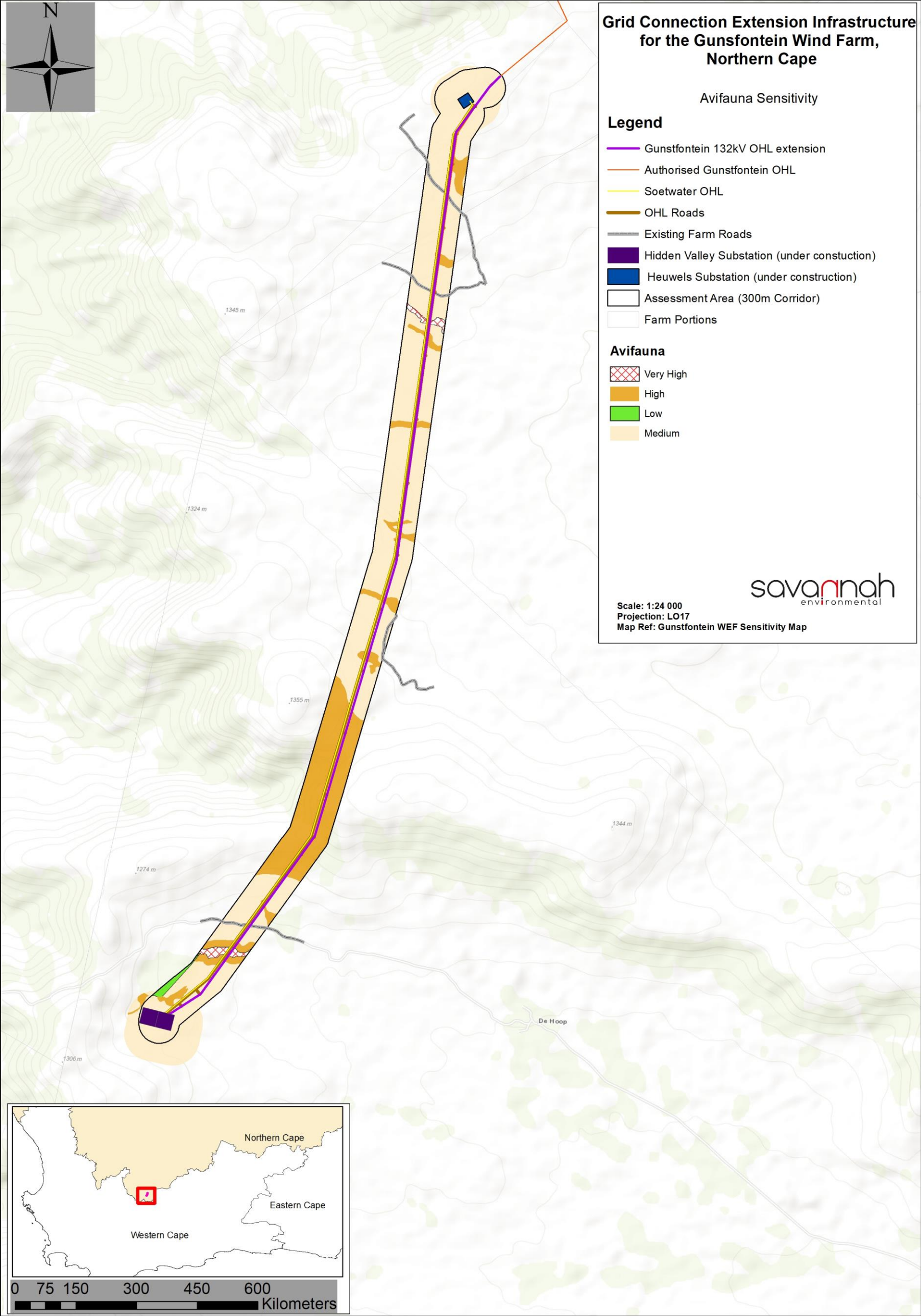


Figure 6.2: Avifaunal sensitivity map for the Gunstfontein Grid Extension, showing the Heuwels substation in the north and the Hidden Valley substation in the south.

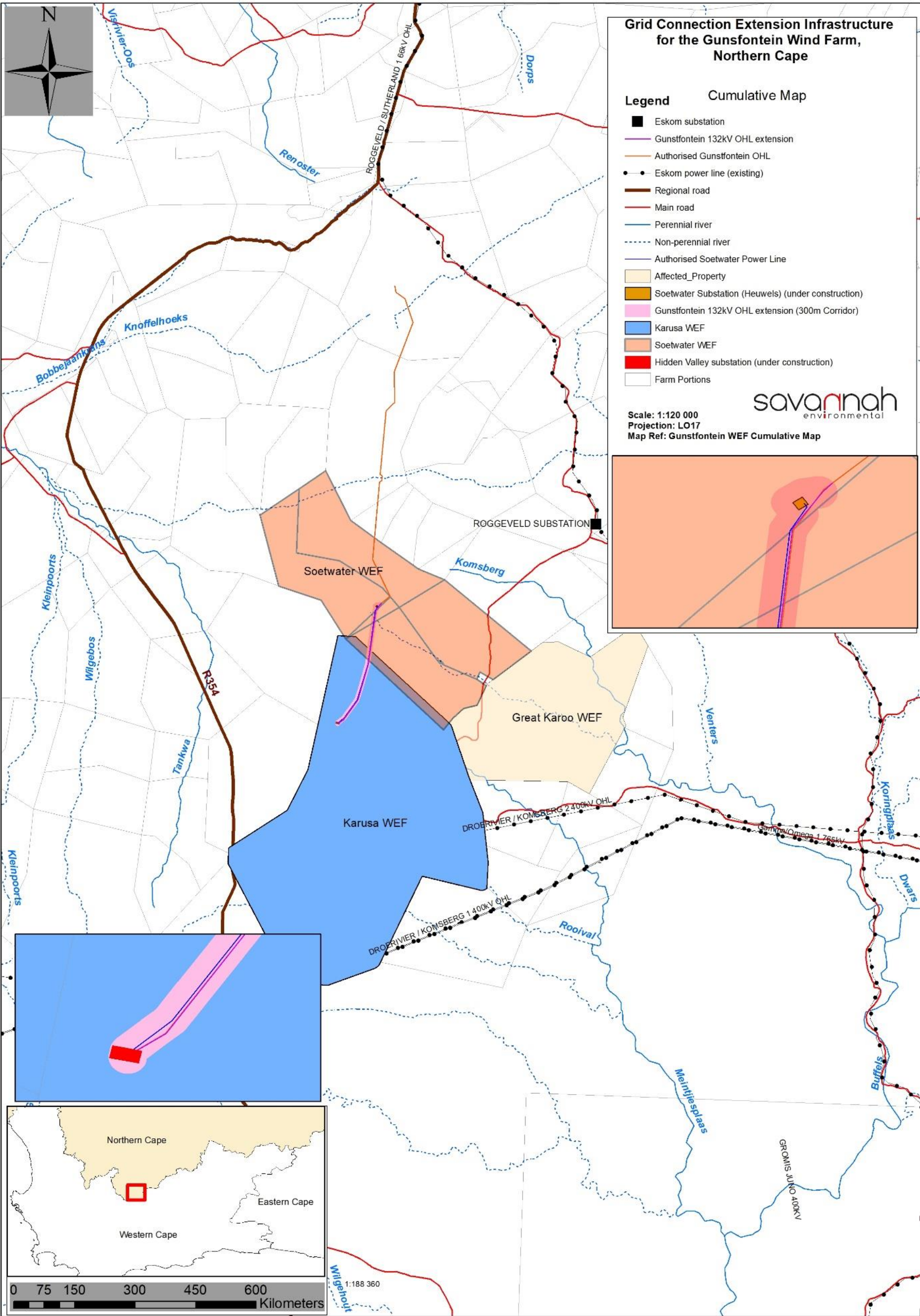


Figure 7.1: Cumulative map for the Gunstfontein OHL Extension

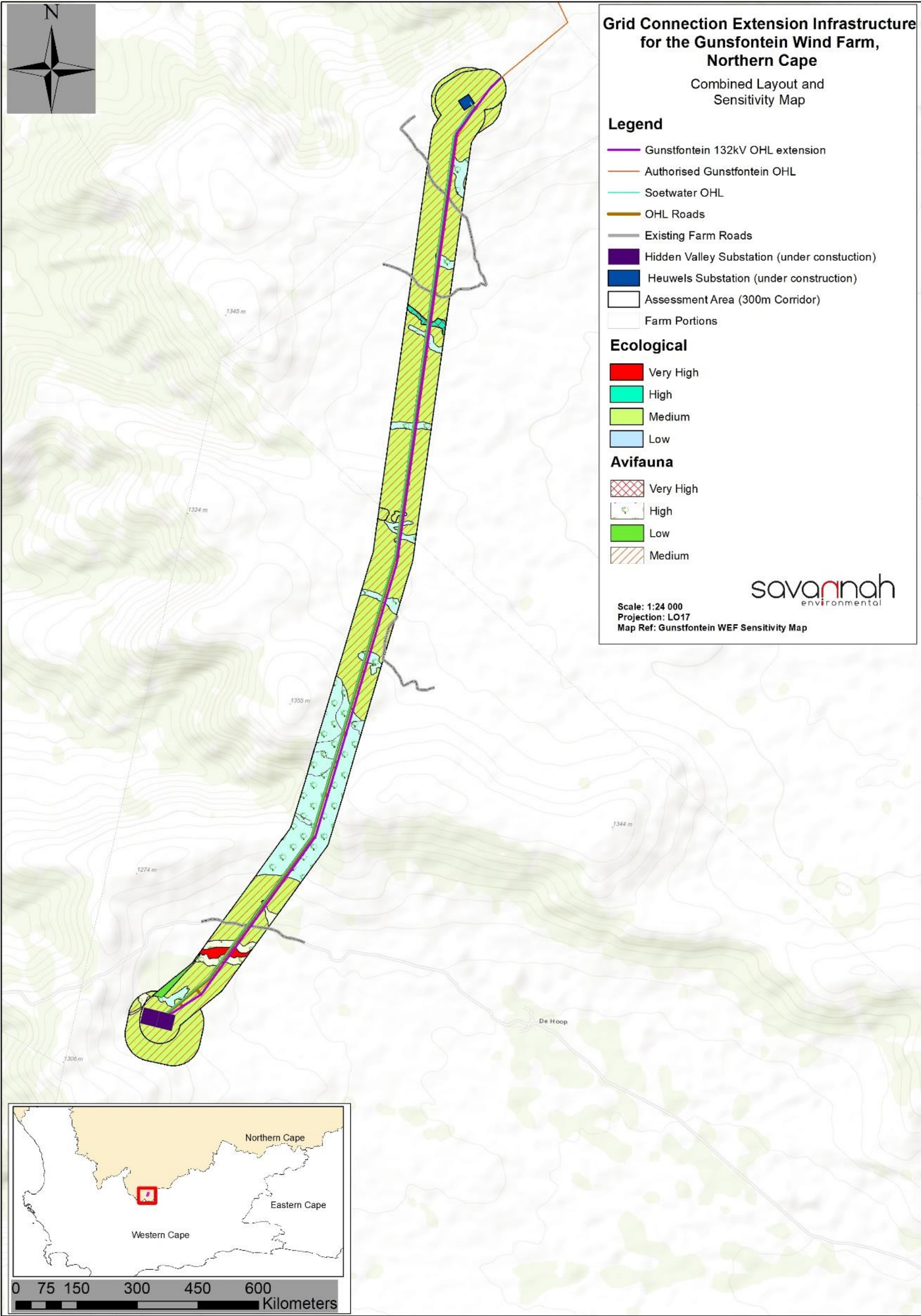


Figure 8.1: Final layout and environmental sensitivity map for the proposed grid connection infrastructure within the assessment corridor showing the final layout proposed for approval in this Basic Assessment Report. The grid connection extension infrastructure layout map (Refer Figure 8.1, Layout Map, Revision 1 December 2020) should be approved along with the environmental authorisation, should one be issued for the project.