

REVIEW	DATE	MODIFIES TITLE N°
DESCRIPTION:		
DESCRIPTION:		
DESCRIPTION:		

VAAL RIVER SOLAR 2 PV FACILITY

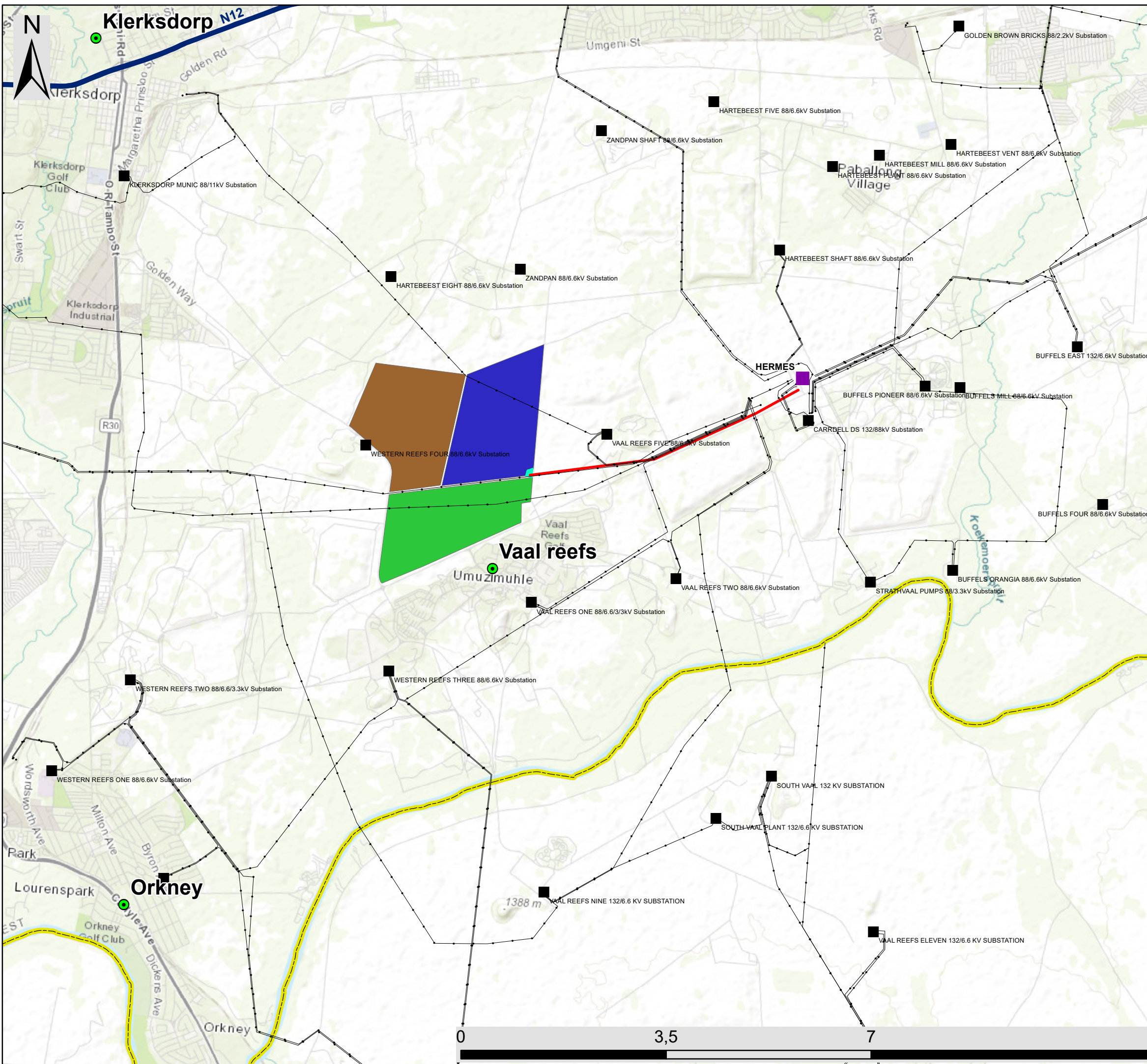


LEGEND (Vaal river solar 2 PV Facility)	
	POWERLINE
	ONE AXIS TRACKING SYSTEM
	SUBSTATION
	TRANSFORMER AND INVERTERS CENTER
	FENCE
	PLOT LIMITS
	WATER PIPELINE
	BATTERY ENERGY STORAGE FACILITY (2ha)

SITE LOCATION:	
VAAL RIVER	
STATUS: PRELIMINARY LAYOUT	
TITLE: 11.002 KVS1-PDES-LYO-1	
DATE: 18/05/2012	ESCALE: 1:8.000
ORIGINAL FORMAT A-3	

LAYOUT





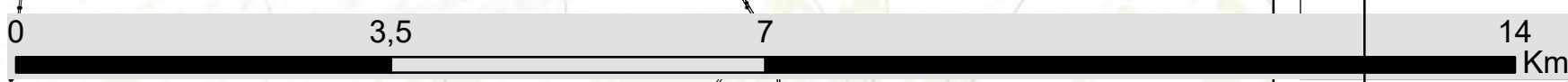
Vaal River Solar PV Facilities, Substation and 132kV power line projects near Orkney in the North West Province

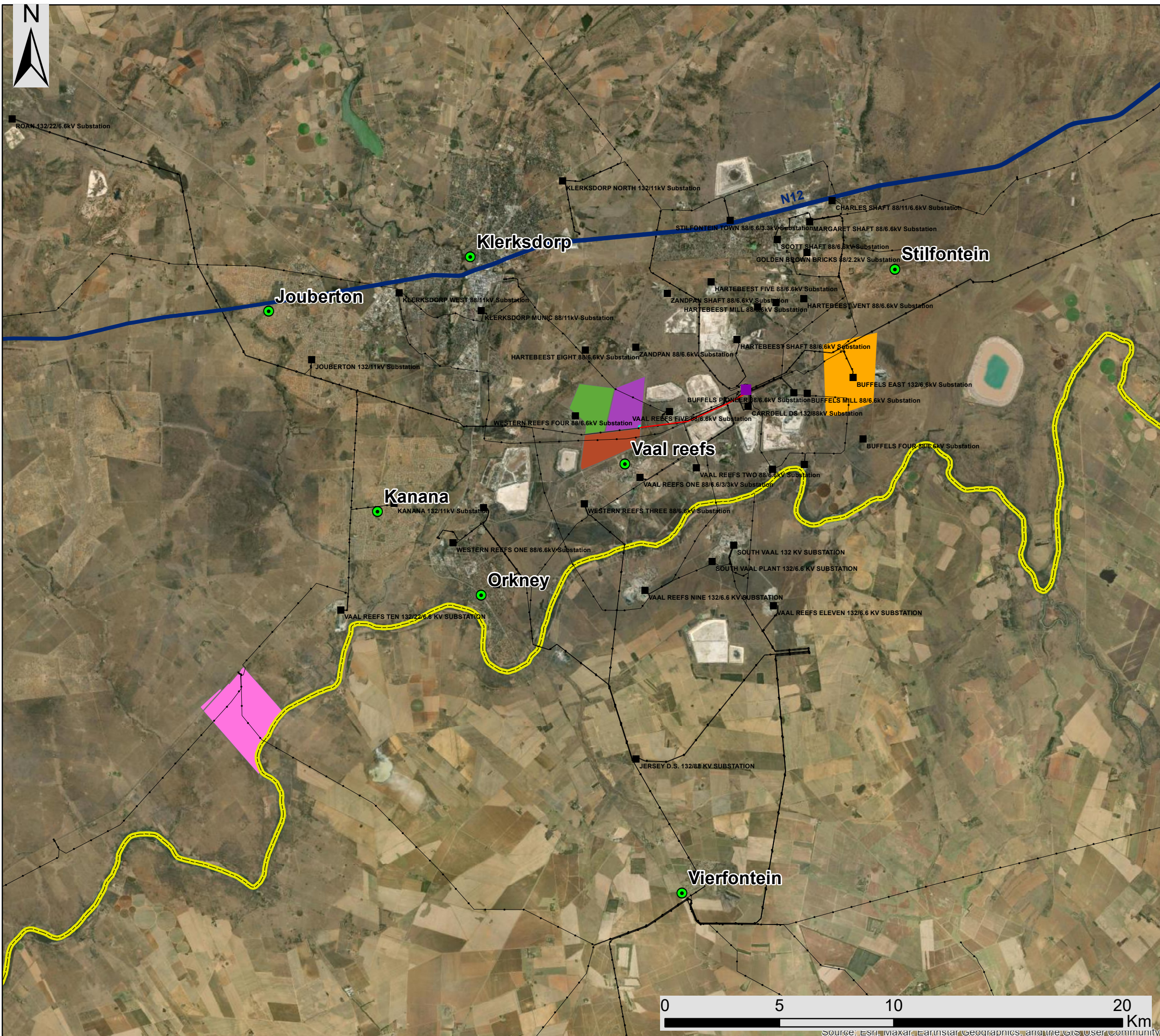
Locality Map

Legend

- Town
- Hermes Eskom Substation
- Eskom Substation
- Existing Power Line
- National Route
- Provincial Boundary
- Vaal River Solar PV Projects**
- 132kV power line for Vaal River Solar PV Facilities
- Substation
- Vaal River Solar 1 PV Facility
- Vaal River Solar 2 PV Facility
- Vaal River Solar 3 PV Facility

Scale: 1:200 000
 Projection: GCS_WGS_1984
 Map Ref: Vaal River Solar PV Facility





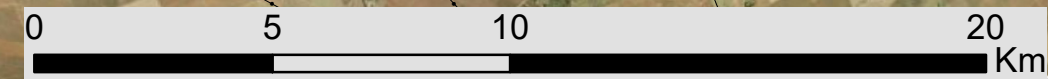
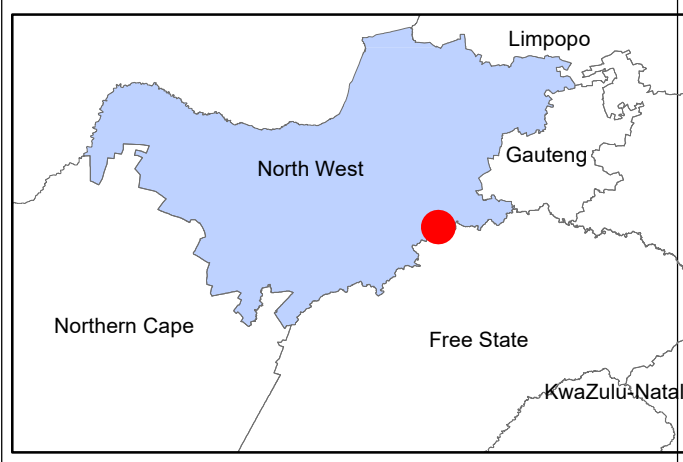
Vaal River Solar PV Facilities, Substation and 132kV power line projects near Orkney in the North West Province

Cumulative Map

Legend

- Town
 - Eskom Substation
 - Hermes Eskom Substation
 - Existing Power Line
 - National Route
 - Provincial Boundary
- Properties Associated With Renewable Energy Facilities**
- Buffels Solar PV1 Energy Facility
 - Orkney PV Solar Energy Facility
- Vaal River Solar PV Projects**
- 132kV power line for Vaal River Solar PV Facilities
 - Substation
 - Vaal River Solar 1 PV Facility
 - Vaal River Solar 2 PV Facility
 - Vaal River Solar 3 PV Facility

Scale: 1:200 000
 Projection: GCS_WGS_1984
 Map Ref: Vaal River Solar PV Facility



Source: Esri, Maxar, Earthstar Geographics, and the GIS User Community

Vaal River Vaalkop Sites

Ecological Sensitivity Map

Legend

- National Road
 - Regional Road
 - Secondary Road
 - Railway Line
 - Perennial River
 - Non-perennial River
 - Existing power Line
 - Distribution Substation
 - Transmission Substation
 - Proposed substation
 - Power line - Vaalkop to Hermes
 - Project Boundary
- Ecological Sensitivity**
- Medium
 - Low

