

A3 MAPS

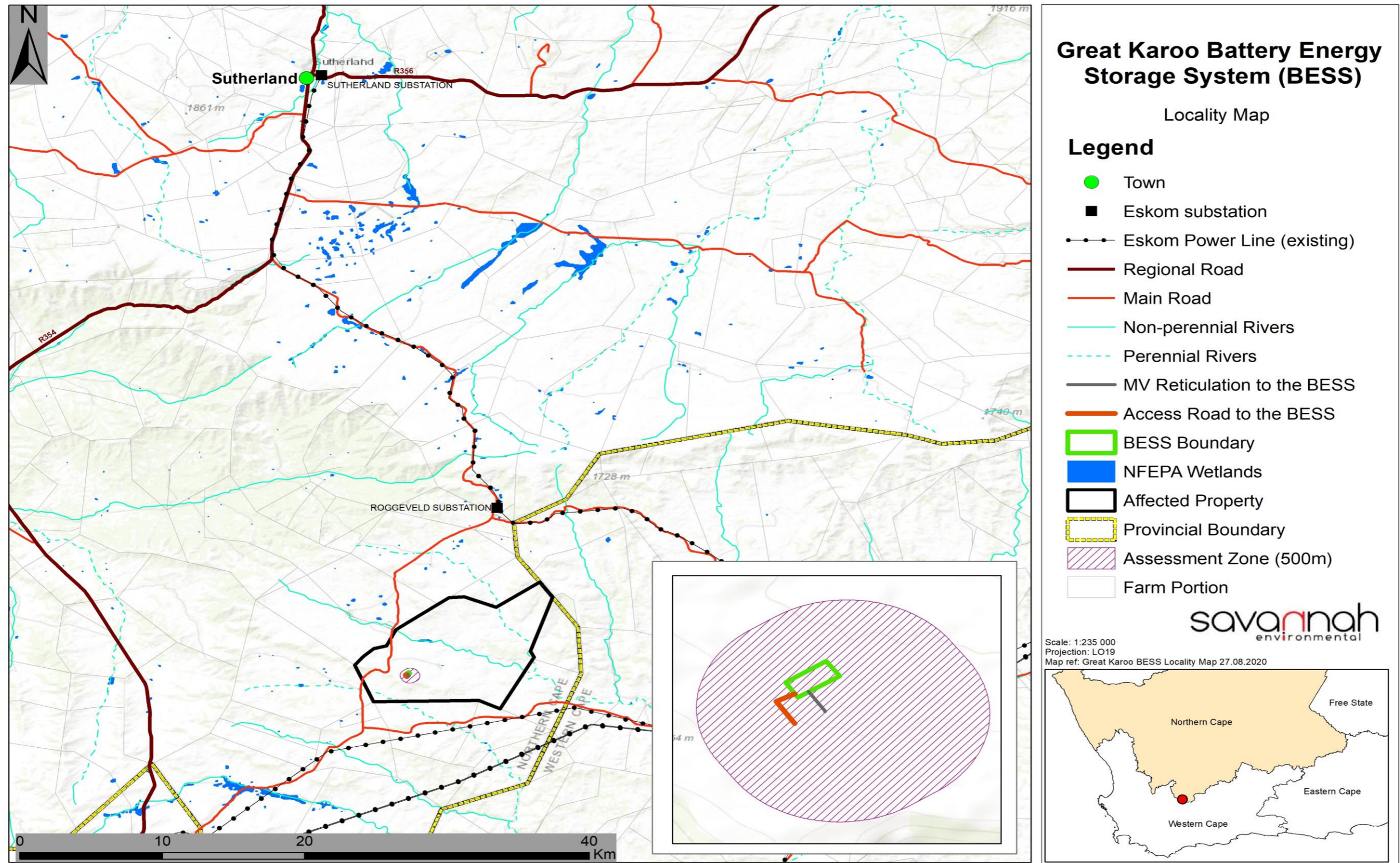


Figure G1: Locality map showing the 500m assessment zone surrounding the Great Karoo Substation proposed for the development of the BESS and associated infrastructure for the authorised Great Karoo Wind Energy Facility

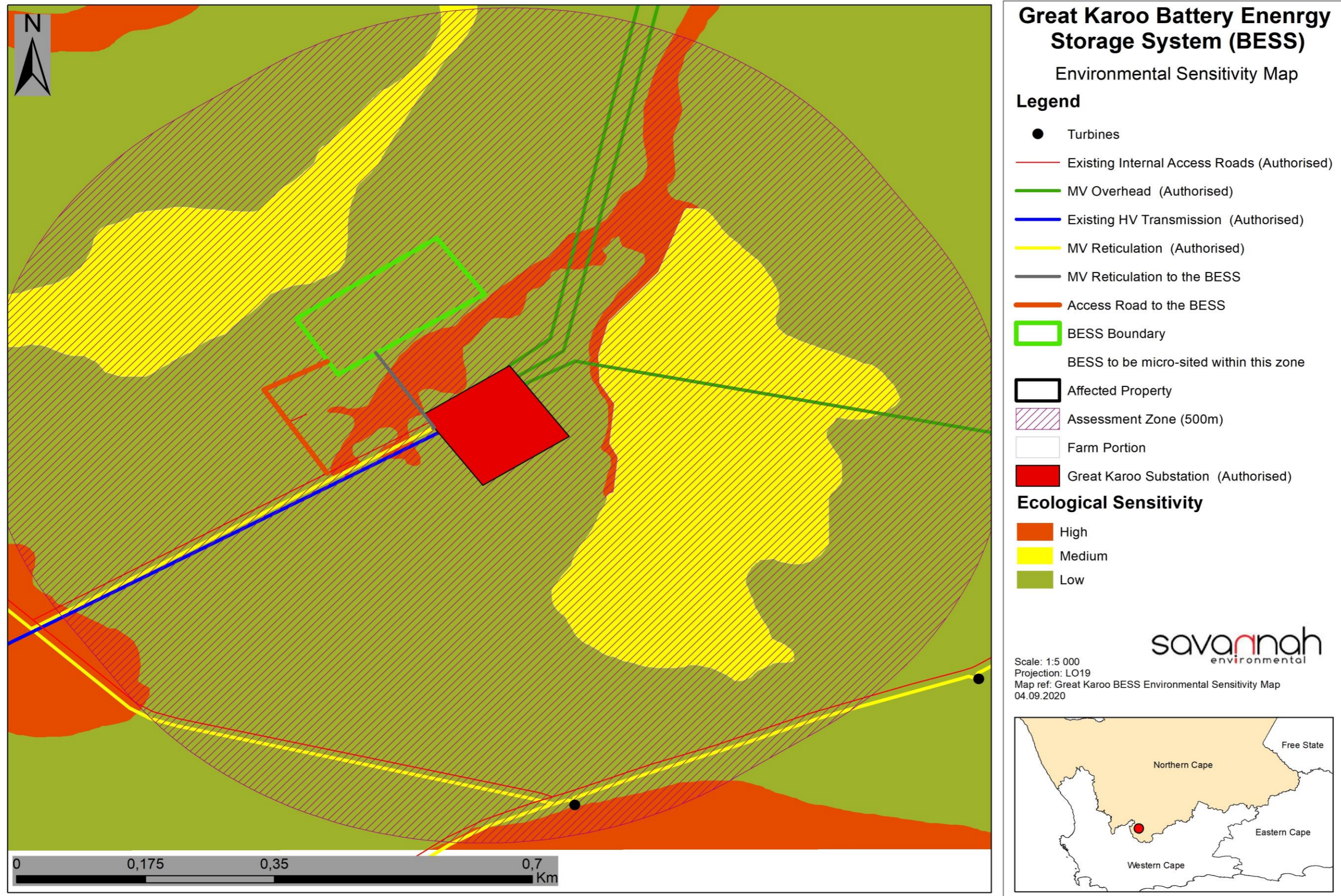


Figure G2: Environmental sensitivity map for the BESS and 500m Assessment Zone surrounding the Great Karoo Substation.

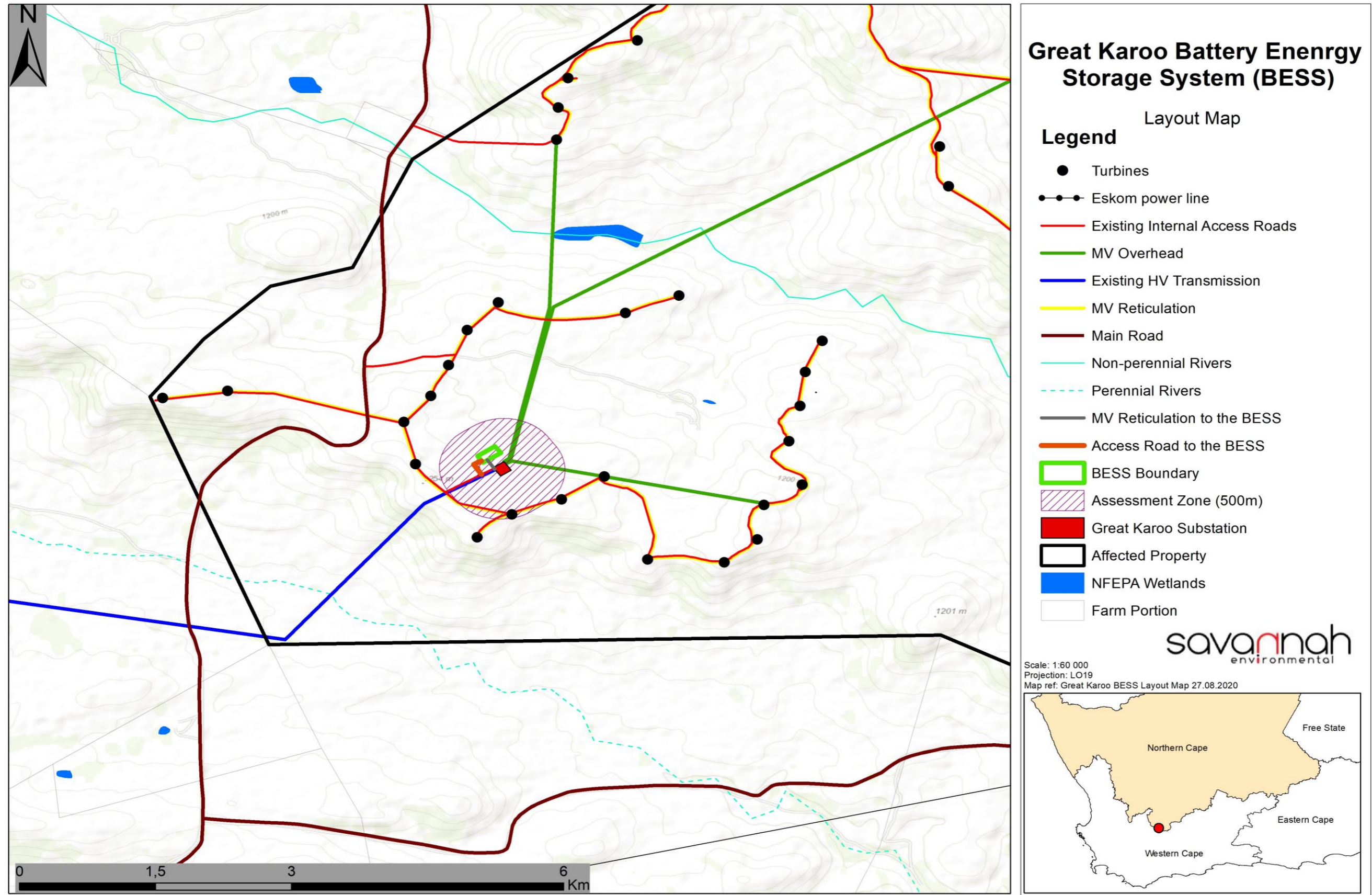
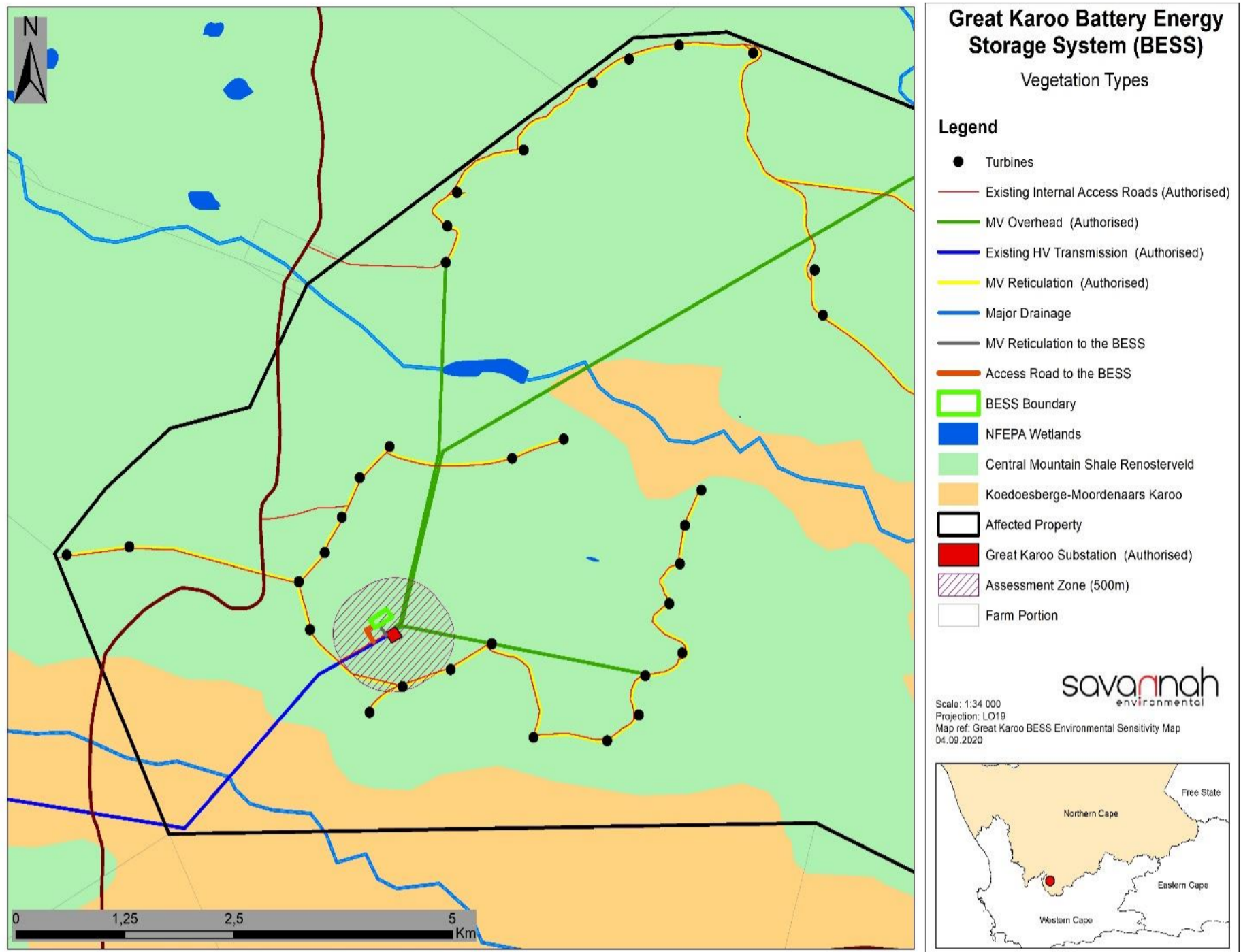


Figure G3: Conceptual layout Map for Great Karoo BESS and associated Infrastructure for the Great Karoo Wind Energy Facility (refer to Appendix I for A3 map)



Fi

Figure G4: Broad-scale overview of the vegetation in and around the Great Karoo substation and BESS study area. The vegetation map is an extract of the national vegetation map (Mucina & Rutherford 2006 & 2018 update) and also includes drainage lines delineated by the NFEPA assessment (Nel et al. 2011).

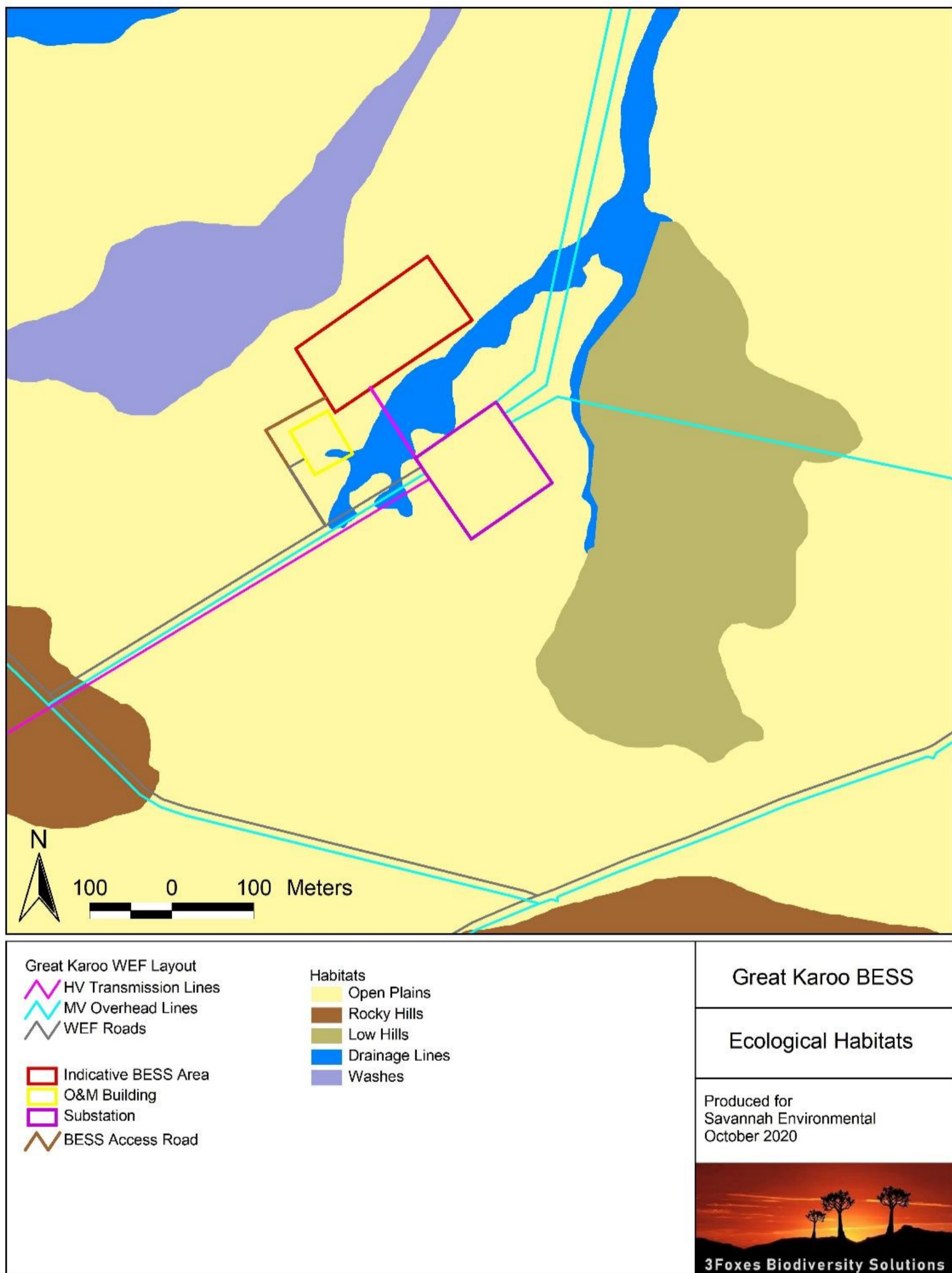


Figure G5: Ecological habitats observed within the Great Karoo BESS 500m assessment region and which are described in detail below.

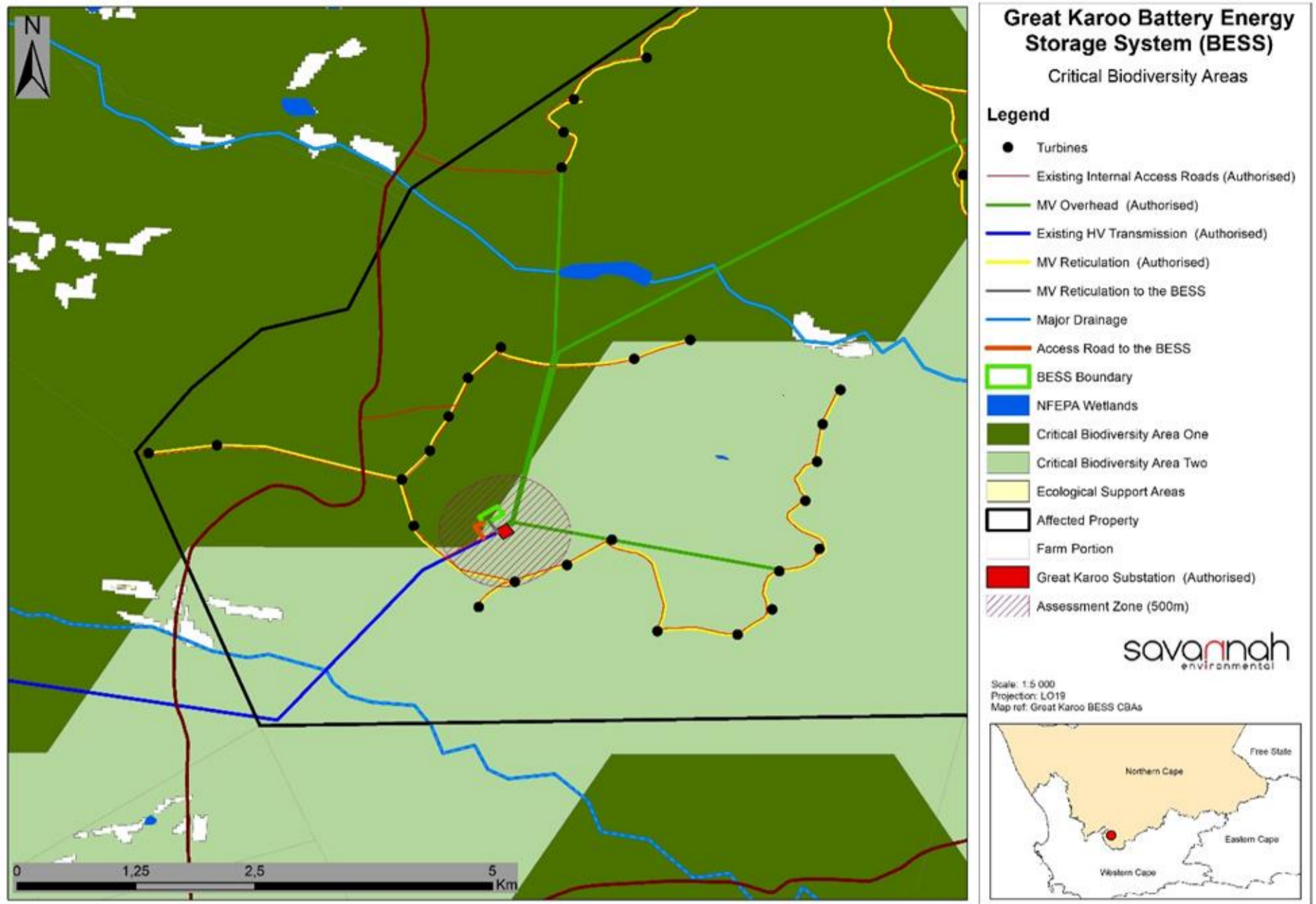


Figure G6: Extract of the Northern Cape Critical Biodiversity Areas map for the broader study area around the Great Karoo BESS, showing that the BESS occurs within an area classified as CBA 1 and CBA 2

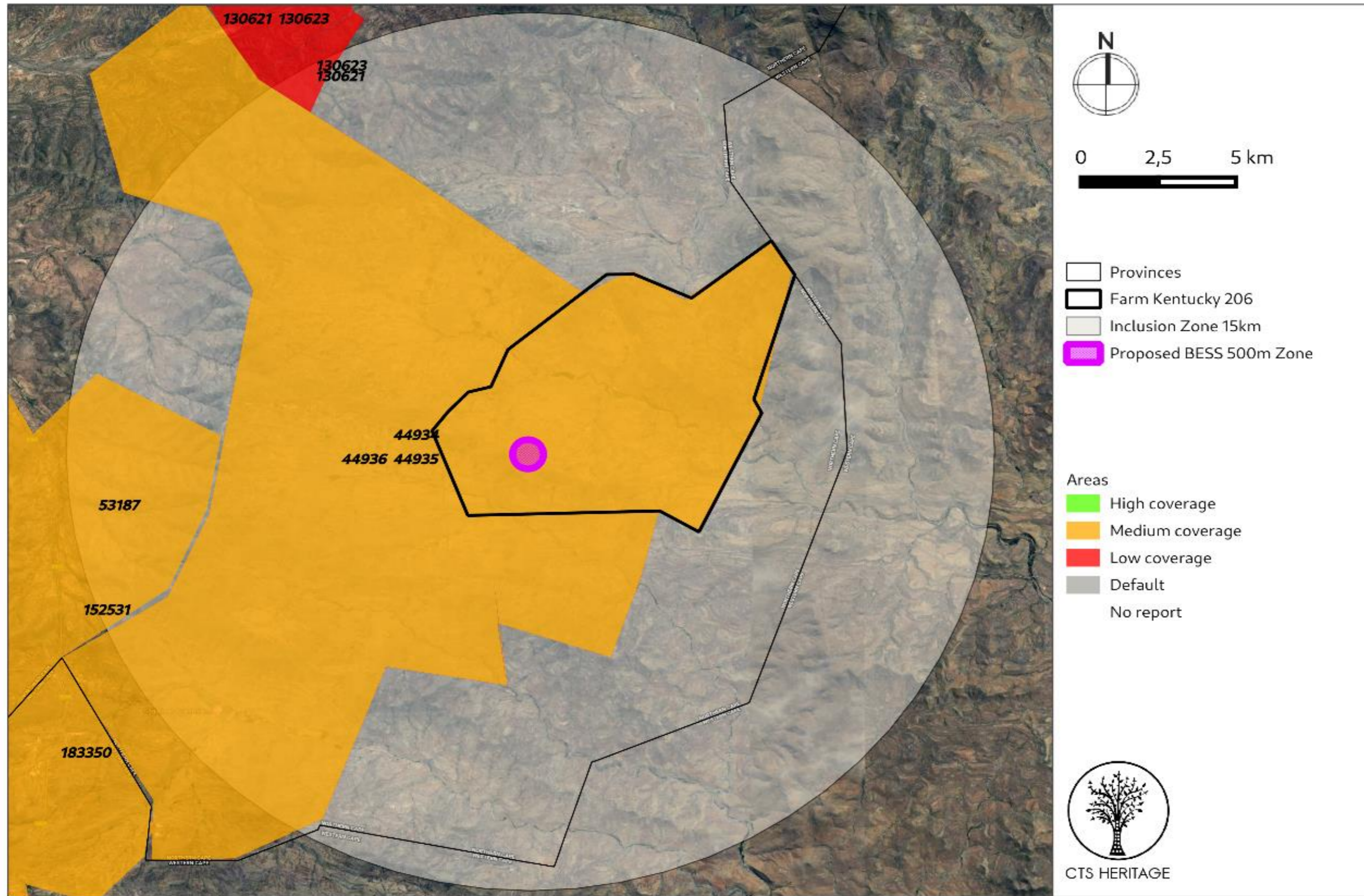


Figure G7: Previous HIAs Map. Previous Heritage Impact Assessments covering the proposed development area with SAHRIS NIDS indicated.

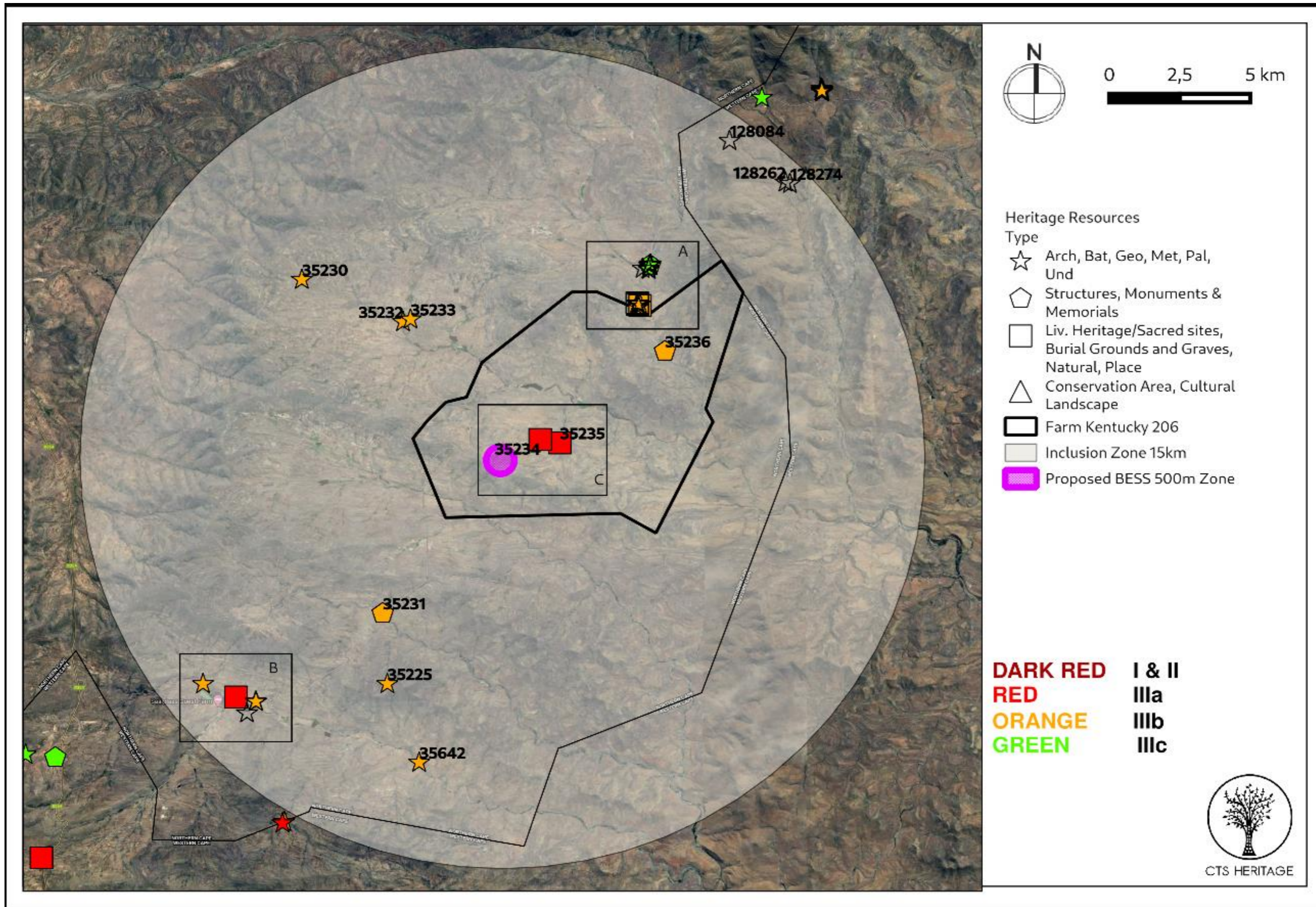


Figure G8: Heritage Resources Map. Heritage Resources previously identified within the study area, with SAHRIS Site IDs indicated in the insets below.

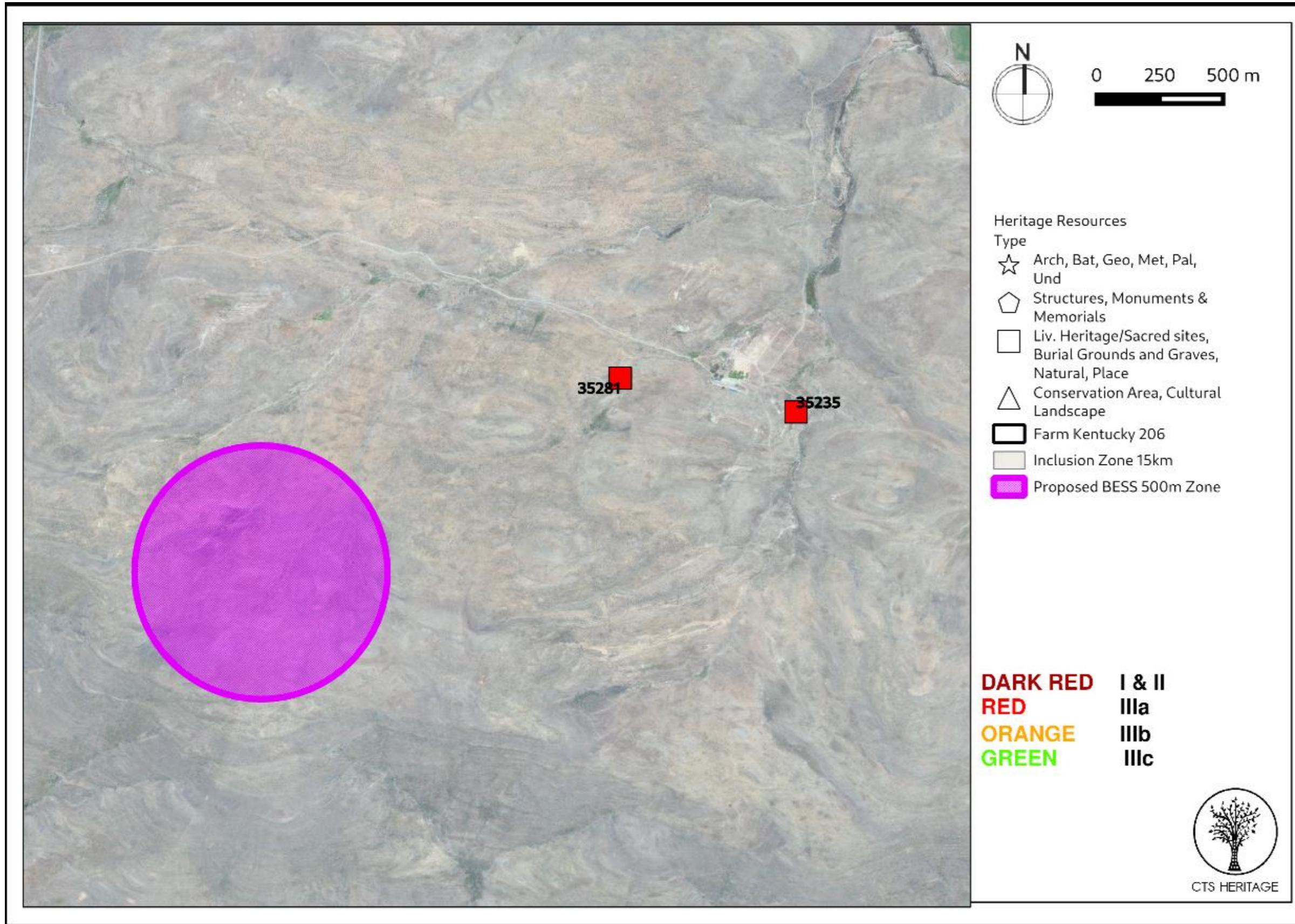


Figure G9: Heritage Resources Map. Inset C indicating known sites in relation to the approved WEF layout and proposed BESS

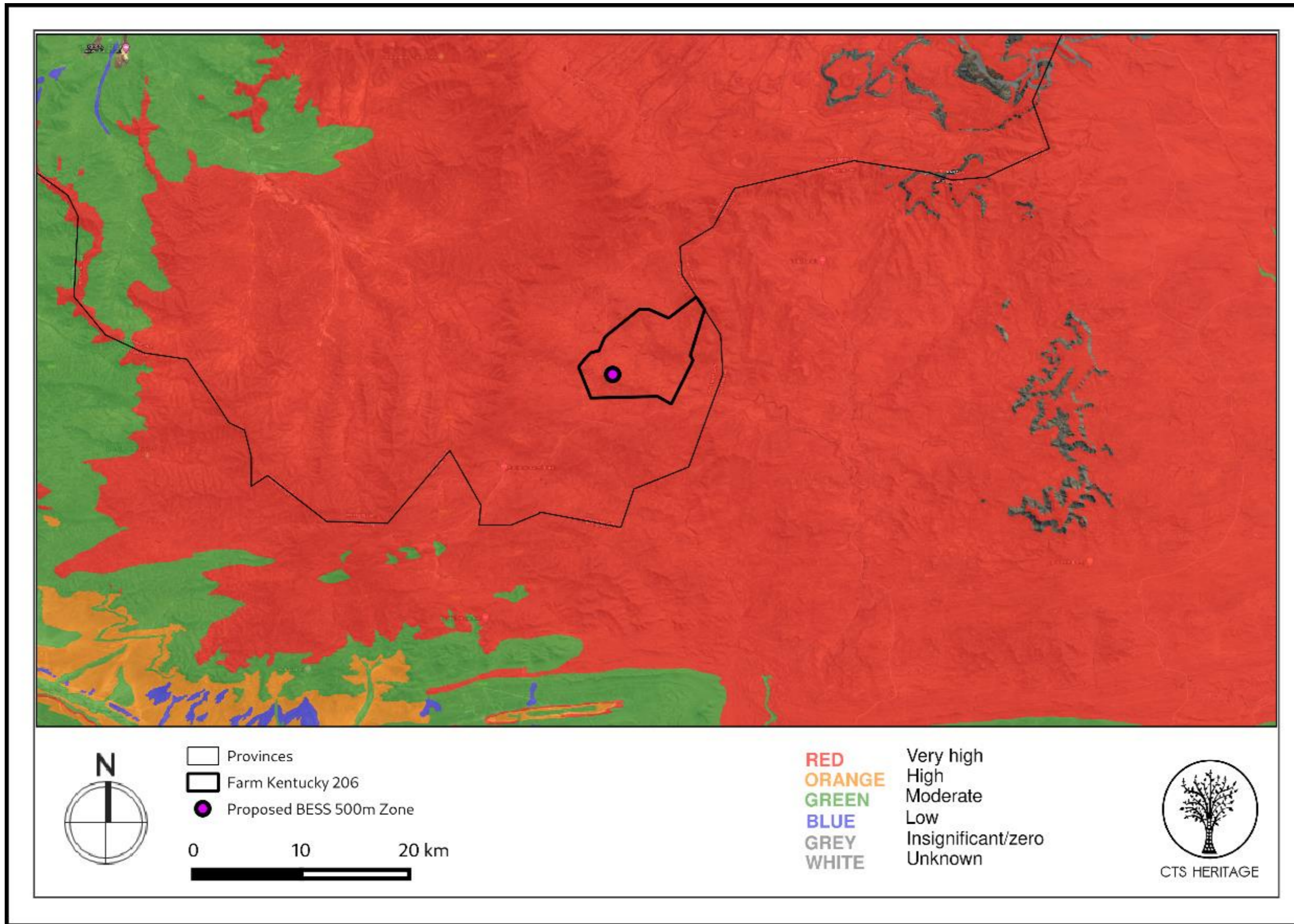
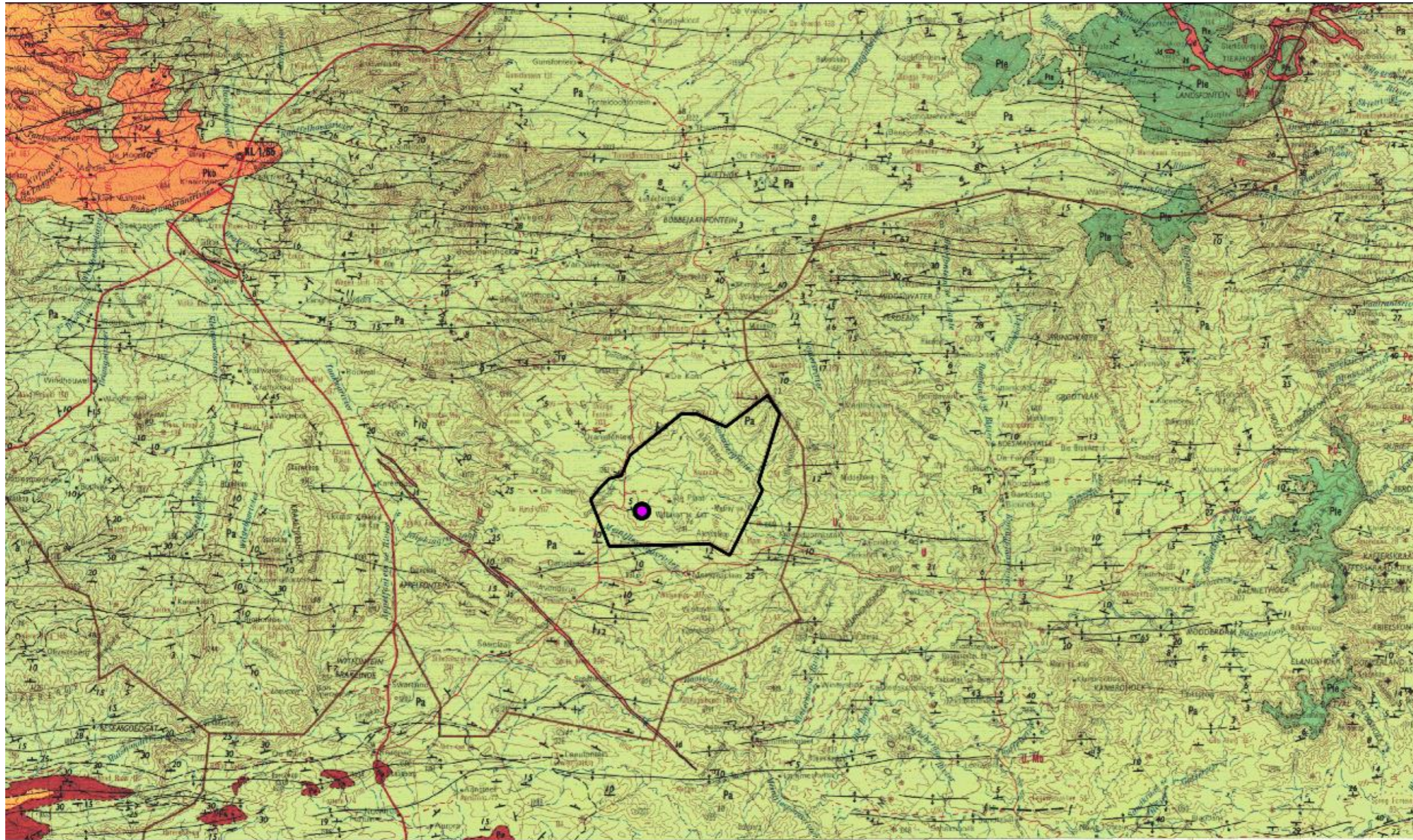

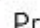


Figure G10: Palaeosensitivity Map. Indicating fossil sensitivity underlying the study area



CTS HERITAGE

-  Farm Kentucky 206
-  Proposed BESS 500m Zone

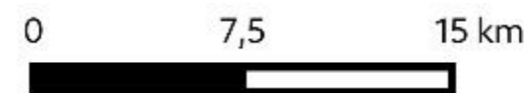
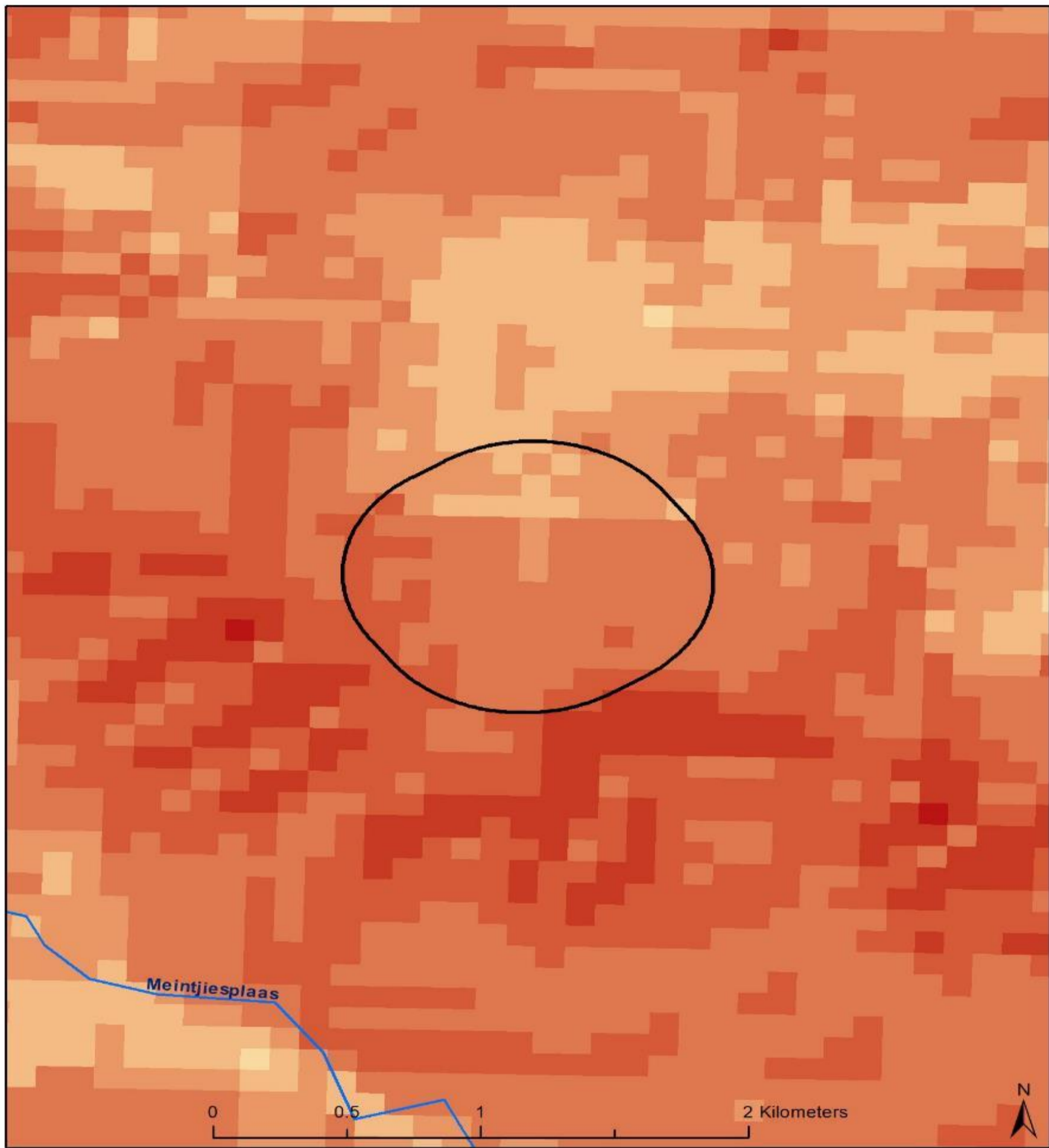


Figure G11: : Extract from the CGS 3220 Sutherland Map indicating that the development area is underlain by sediments of the Karoo Supergroup assigned to the Beaufort group, within the Abrahamskraal Formation of the Adelaide Subgroup (Pa).



Legend

Land capability (DAFF)

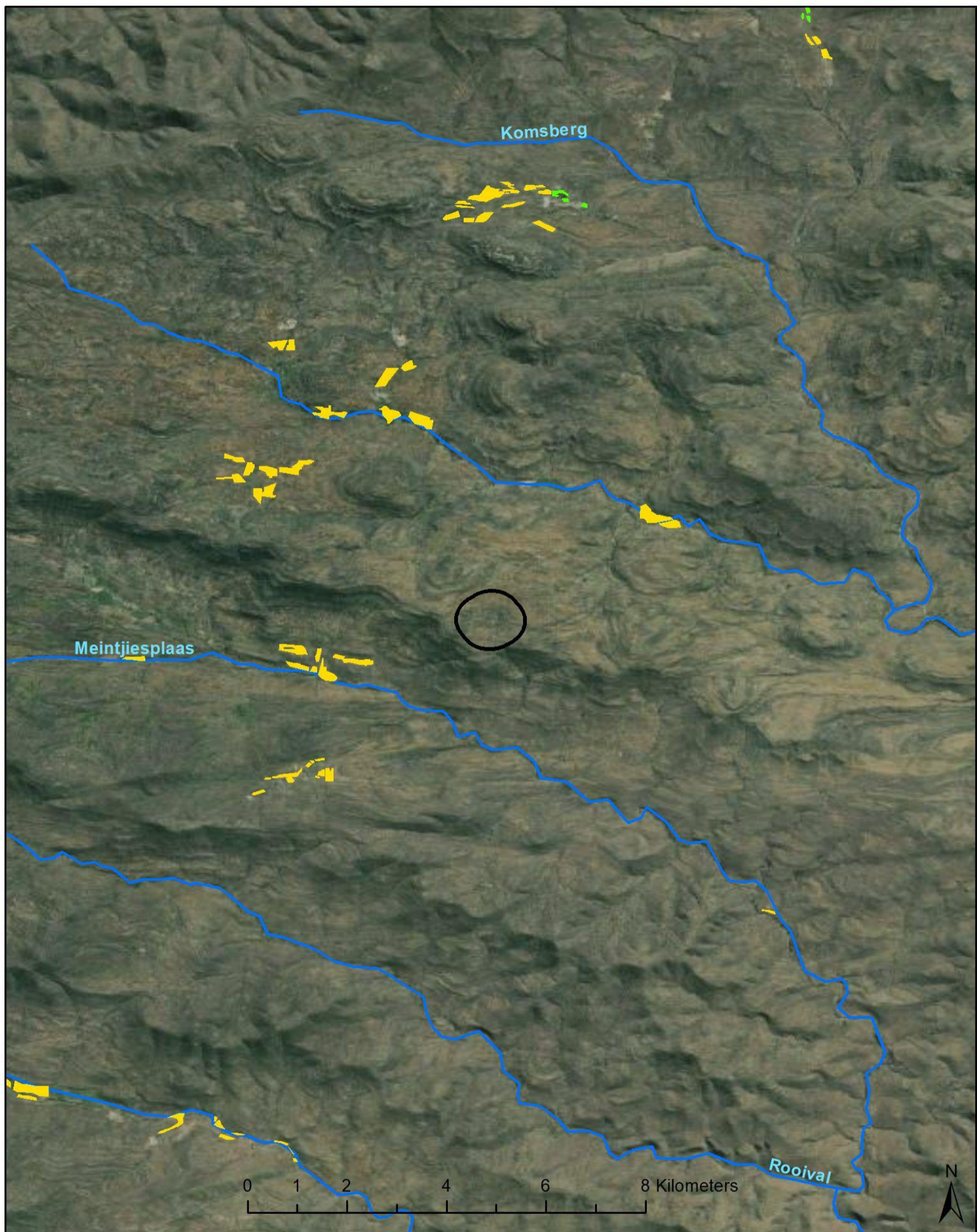
- 01. Very low
- 02. Very low
- 03. Low-Very low

- 04. Low-Very low
- 05. Low
- 06. Low-Moderate
- 07. Low-Moderate

- Project assessment zone (104 ha)
- Rivers



Figure G12: Land capability classification of the Great Karoo BESS project assessment zone and surrounding area (data source: DAFF, 2017)



Legend

Field crops

-  Horticulture
-  Rainfed Annual Crop Cultivation / Planted Pastures



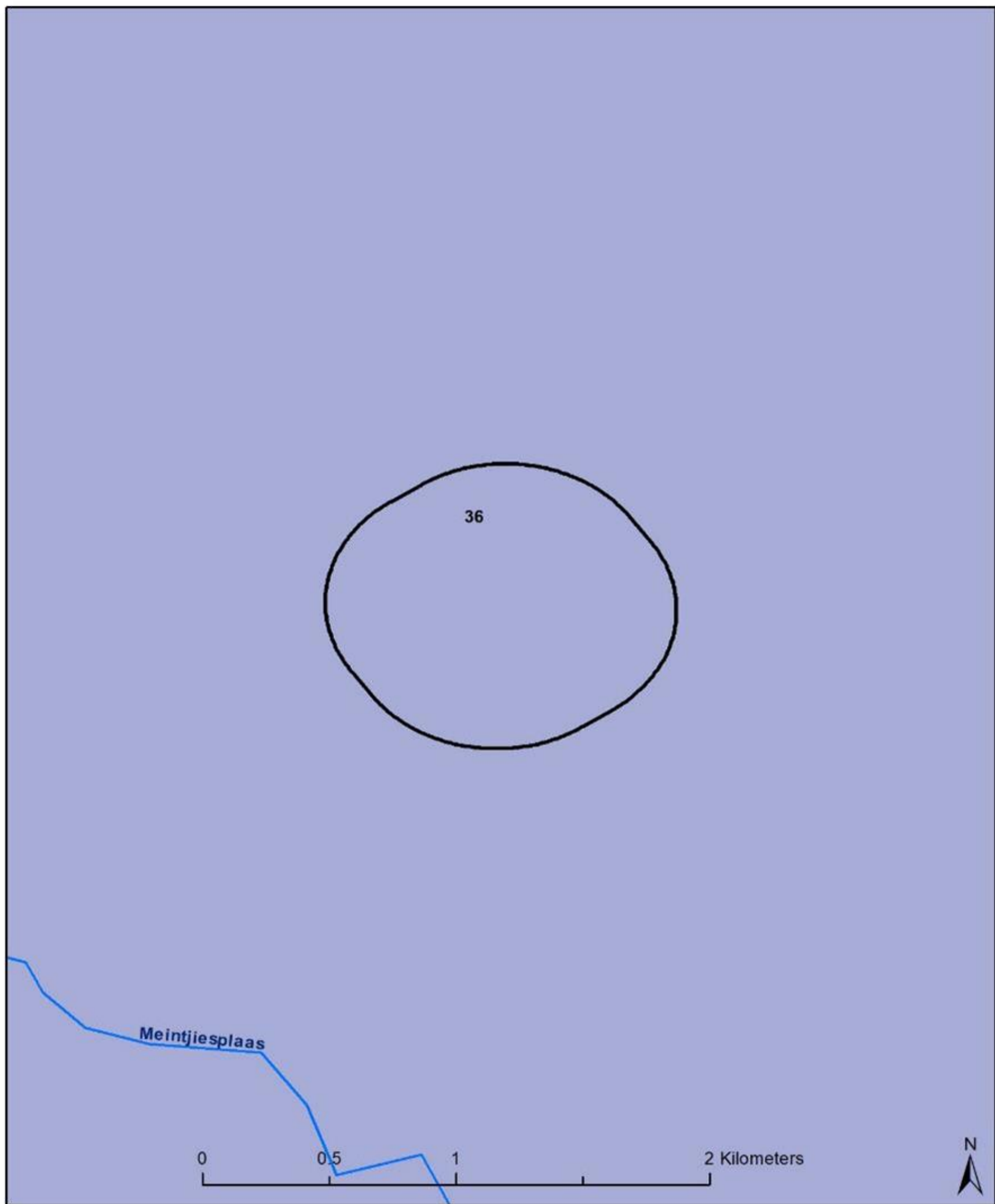
-  Project assessment zone (104 ha)
-  Rivers



Figure G13: : Location of field crop boundaries in the larger area around the proposed Great Karoo BESS project assessment zone (data source: DAFF, 2019)



Legend

Grazing capacity (ha/LSU)

36

Project assessment zone (104 ha)

Rivers



Figure G14: : Grazing capacity in the larger area around the proposed Great Karoo BESS project assessment zone (data source: DAFF, 2019)

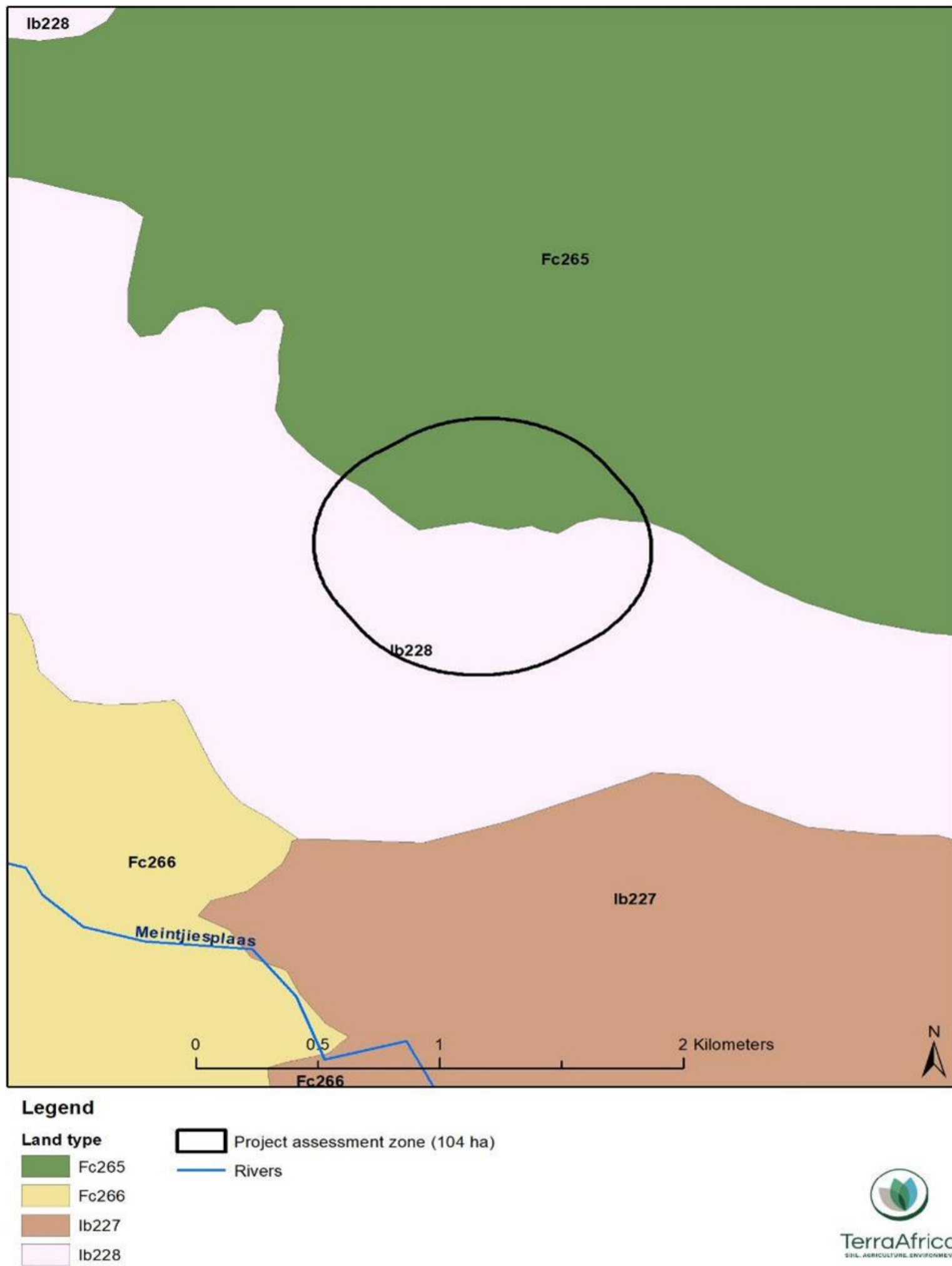


Figure G15: Land type classification of the proposed Great Karoo BESS project assessment zone and the surrounding area

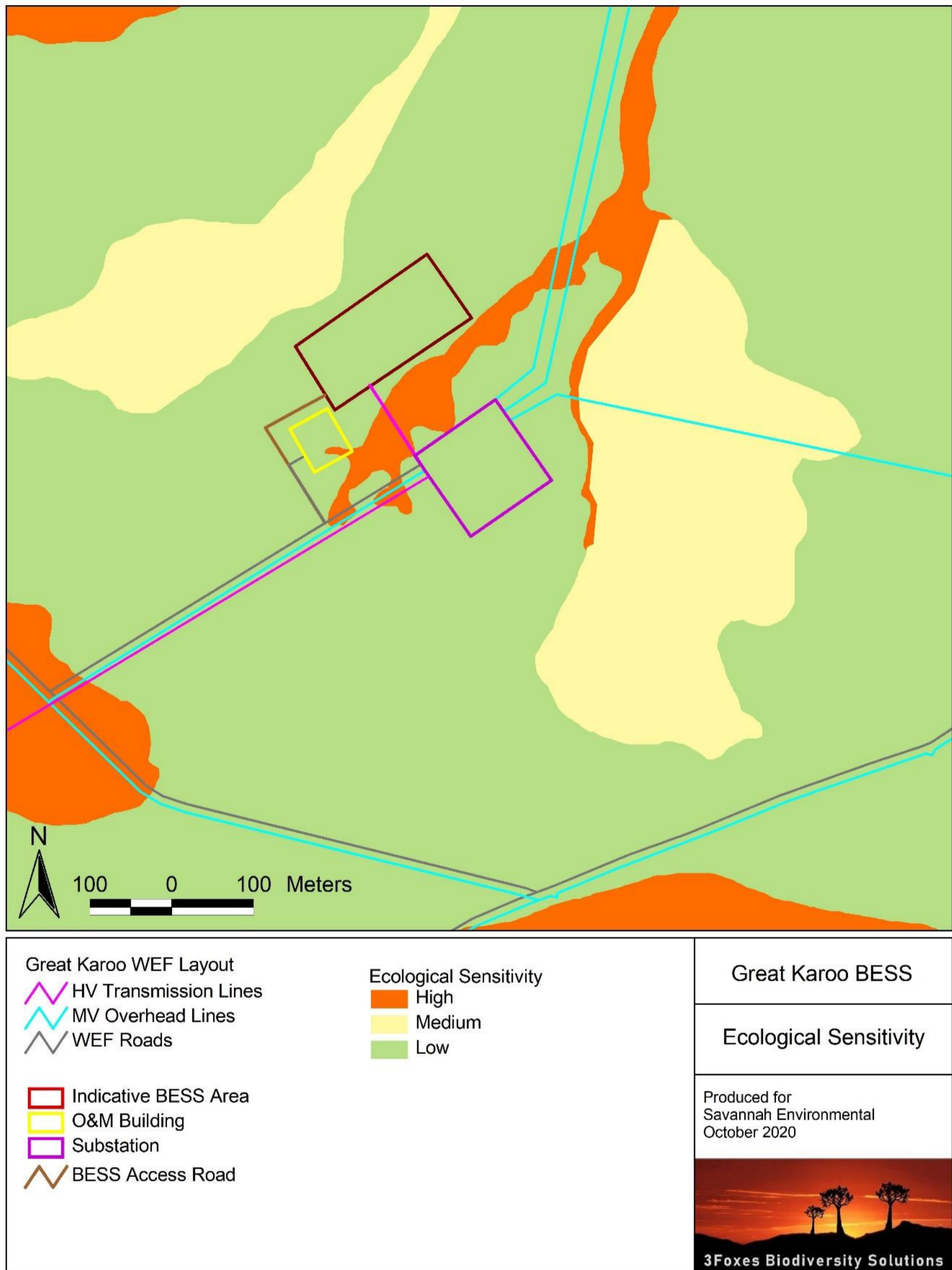


Figure G16: : Ecological Sensitivity map for the Great Karoo BESS 500m assessment region.

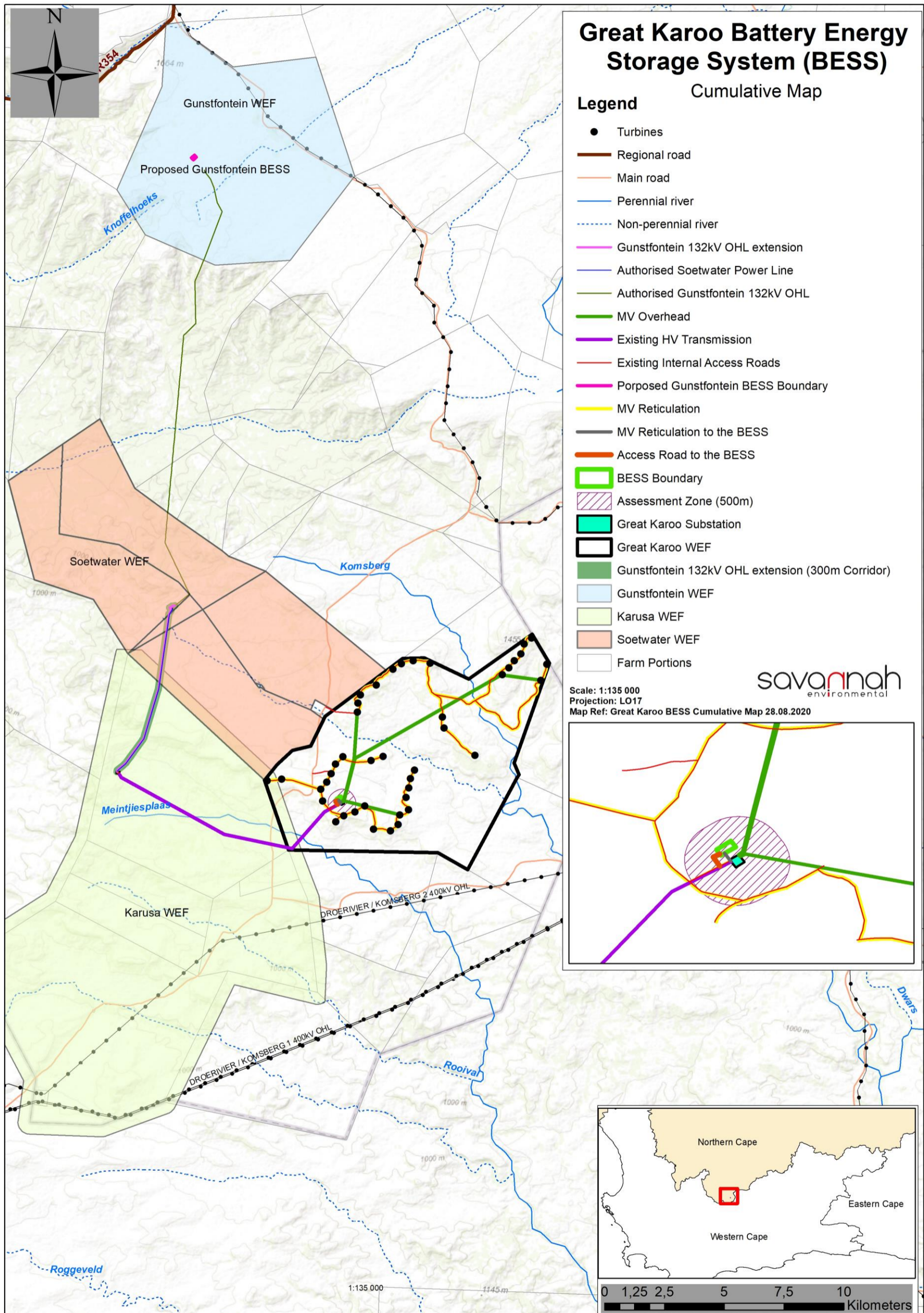


Figure G17: Cumulative map for the Great Karoo BESS and associated infrastructure showing electrical infrastructure related to the two BESS projects known to be planned in the area.