



Jones & Wagener

Consulting Civil Engineers

59 Bevan Road PO Box 1434 Rivonia 2128 South Africa
Tel: 00 27 (0)11 519 0200 Fax: 00 27 (0)11 519 0201 email: post@jaws.co.za

Dr. Mathys Vosloo
Zitholele Consulting

14 May, 2013

Our Ref: **D615**
Your Ref: 12726
D615_00_LET_01_kk_MvZ_15May2013

Attention: Dr. Mathys Vosloo

Dear Sir

RESPONSE REGARDING THE PROPOSED IMPACT OF AMENDING CORRIDOR 3E OF THE PROPOSED SOLAR INTEGRATION PROJECT

As per your request please find our official response to your query below.

It is the opinion of the specialist that the widening/optimization of Corridor 3E as per the map below of the proposed Solar Integration project will not alter the sensitivity of the corridor in relation to the other corridors investigation. This is relevant for the terrestrial ecology, surface water, soil and land capability assessments as undertaken by Jones & Wagener.

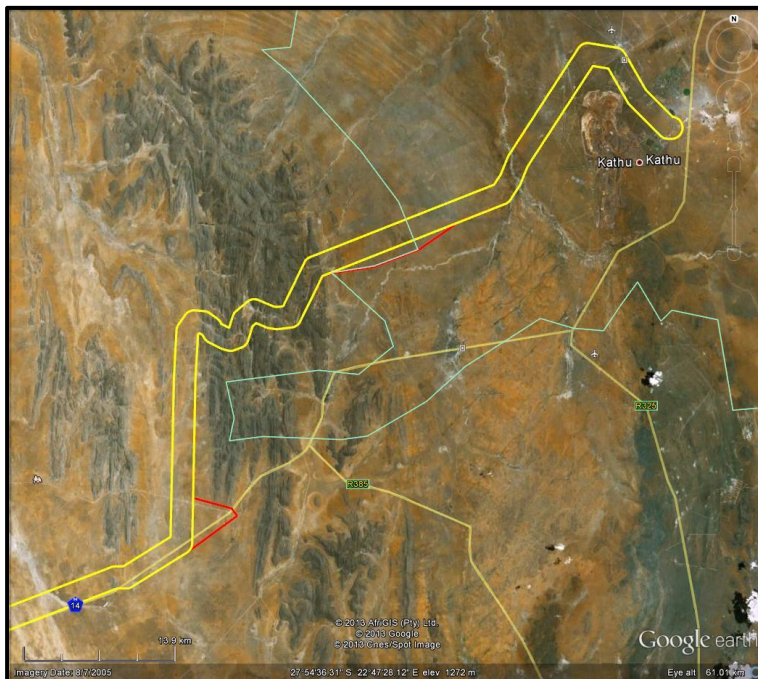


Figure 1: Changes to Corridor 3E

JONES & WAGENER (PTY) LTD REG NO. 1993/02655/07 VAT No. 4410136685

DIRECTORS: PW Day (Chairman) PrEng DEng HonFSAICE D Brink (CEO) PrEng BEng(Hons) FSAICE PG Gage PrEng CEng BSc(Eng) GDE MSAICE AIStructE JP van der Berg PrEng PhD MEng FSAICE
TT Goba PrEng MEng FSAICE GR Wardle (Alternate) PrEng MSc(Eng) FSAICE
TECHNICAL DIRECTORS: JR Shamrock PrEng MSc(Eng) MSAICE MIWMSA JE Glendinning PrSciNat MSc(Env Geochem) NJ Vermeulen PrEng PhD MEng MSAICE A Oosthuizen PrEng BEng(Hons) MSAICE
HR Aschenborn PrEng BEng(Hons) MSAICE M van Zyl PrSciNat BSc(Hons) MIWMSA MW Palmer PrEng MSc(Eng) AMSAICE TG le Roux PrEng MEng MSAICE
ASSOCIATES: BR Antrobus PrSciNat BSc(Hons) MSAIEG AJ Bain BEng AMSAICE PJJ Smit BEng(Hons) AMSAICE R Puchner PrSciNat MSc(Geol) IMSAIEG MAEG M van Biljon MSc(Hydrogeology)
JS Msiza PrEng BEng(Hons) MSAICE MIWMSA RA Nortjé PrEng MScEng MSAICE MIWMSA GB Simpson PrEng MEng MSAIAE
CONSULTANT: JA Kempe PrEng BSc(Eng) GDE MSAICE AIStructE
FINANCIAL MANAGER: HC Neveling BCom MBL



Yours faithfully



Konrad Kruger
for Jones & Wagener



Marius van Zyl

Document source: C:\Alljobs\D615 Zitholele\Correspondence\D615_00_LET_01_kk_MvZ_15May2013.docx
Document template: corLet_13r1.dotx