

APPENDIX

H SCREENING TOOL REPORT



**SCREENING REPORT FOR AN ENVIRONMENTAL AUTHORIZATION AS
REQUIRED BY THE 2014 EIA REGULATIONS – PROPOSED SITE
ENVIRONMENTAL SENSITIVITY**

EIA Reference number:

Project name: Secunda Impumelelo

Project title: 132kV Gridline Option 1 (250m buffer)

Date screening report generated: 07/02/2023 09:58:16

Applicant: Enertrag

Compiler: WSP Group Africa (Pty) Ltd

Compiler signature:

.....

Application Category: Utilities Infrastructure | Electricity | Distribution and Transmission | Powerline

Table of Contents

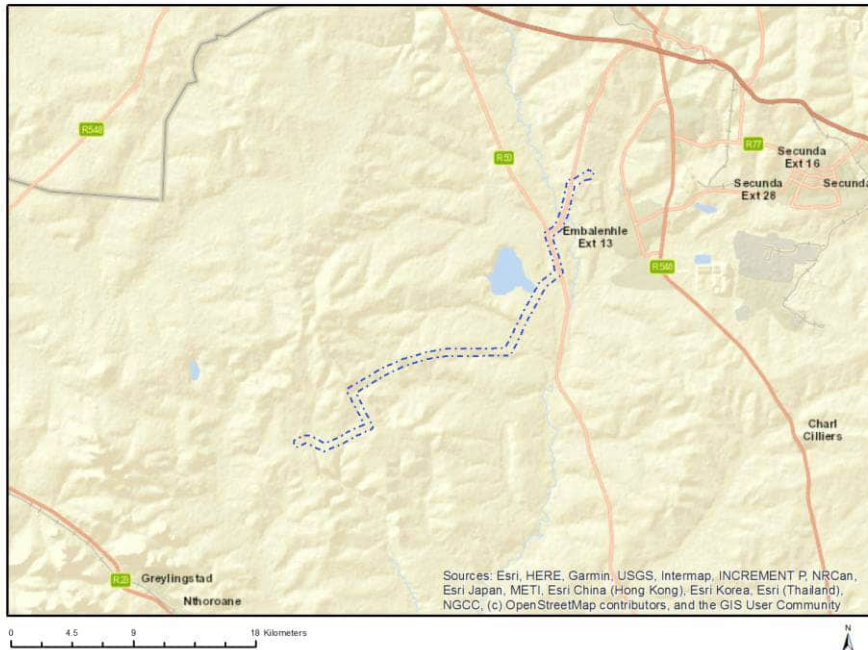
- Proposed Project Location 3
 - Orientation map 1: General location 3
- Map of proposed site and relevant area(s) 4
 - Cadastral details of the proposed site 4
 - Wind and Solar developments with an approved Environmental Authorisation or applications under consideration within 30 km of the proposed area 5
 - Environmental Management Frameworks relevant to the application 5
- Environmental screening results and assessment outcomes 6
 - Relevant development incentives, restrictions, exclusions or prohibitions 6
- Map indicating proposed development footprint within applicable development incentive, restriction, exclusion or prohibition zones 7
 - Proposed Development Area Environmental Sensitivity 7
 - Specialist assessments identified 8
- Results of the environmental sensitivity of the proposed area 10
 - MAP OF RELATIVE AGRICULTURE THEME SENSITIVITY 10
 - MAP OF RELATIVE ANIMAL SPECIES THEME SENSITIVITY 11
 - MAP OF RELATIVE AQUATIC BIODIVERSITY THEME SENSITIVITY 12
 - MAP OF RELATIVE ARCHAEOLOGICAL AND CULTURAL HERITAGE THEME SENSITIVITY 13
 - MAP OF RELATIVE CIVIL AVIATION THEME SENSITIVITY 14
 - MAP OF RELATIVE DEFENCE THEME SENSITIVITY 15
 - MAP OF RELATIVE PALEONTOLOGY THEME SENSITIVITY 16
 - MAP OF RELATIVE PLANT SPECIES THEME SENSITIVITY 17
 - MAP OF RELATIVE TERRESTRIAL BIODIVERSITY THEME SENSITIVITY 18

Proposed Project Location

Orientation map 1: General location



Map of proposed site and relevant area(s)



Cadastral details of the proposed site

Property details:

No	Farm Name	Farm/ Erf No	Portion	Latitude	Longitude	Property Type
1	GROOTSPRUIT	279	0	26°32'33.79S	29°2'52.71E	Farm
2	UITSPAN	529	0	26°36'19.17S	28°59'12.69E	Farm
3	ROODEBANK	323	0	26°36'49.67S	29°0'33.3E	Farm
4	WOLFENFONTEIN	534	0	26°37'49.14S	28°58'12.27E	Farm
5	ZANDFONTEIN	130	0	26°29'54S	29°2'7.52E	Farm
6	LEEUWSPAN	532	0	26°34'20.79S	28°58'39.32E	Farm
7	RASKOP -	538	0	26°36'36.4S	28°54'13.81E	Farm
8	SPRINGBOKDRAAI	277	0	26°31'45.08S	29°0'59.2E	Farm
9	DEBANK OF VAALBANK	280	0	26°34'20.14S	29°1'30.42E	Farm
10	MAHEMSFONTEIN	544	0	26°41'10.65S	28°50'22.65E	Farm
11	KAALSPRUIT	528	0	26°35'55.63S	28°55'52.3E	Farm
12	HOLGATSFONTEIN	535	0	26°38'14.48S	28°55'0.1E	Farm
13	PLATKOP	543	0	26°40'16.26S	28°52'40.71E	Farm
14		677	0	26°37'15.42S	28°52'17.63E	Farm
15	GROOTSPRUIT	279	0	26°31'32.22S	29°2'26.77E	Farm Portion
16	SPRINGBOKDRAAI	277	0	26°32'48.83S	29°1'47.84E	Farm Portion
17	ZANDFONTEIN	130	9	26°31'12.03S	29°2'19.38E	Farm Portion
18	SPRINGBOKDRAAI	277	3	26°32'15.31S	29°1'24E	Farm Portion
19	ZANDFONTEIN	130	3	26°30'39.1S	29°1'40.18E	Farm Portion
20	DEBANK OF VAALBANK	280	4	26°33'49.48S	29°1'9.79E	Farm Portion
21	ZANDFONTEIN	130	8	26°30'51.26S	29°2'17.99E	Farm Portion
22	ZANDFONTEIN	130	2	26°30'42.16S	29°1'57.99E	Farm Portion
23	SPRINGBOKDRAAI	277	5	26°33'0.79S	29°1'11.85E	Farm Portion
24	DEBANK OF VAALBANK	280	0	26°34'10.45S	29°1'41.12E	Farm Portion

25	ROODEBANK	323	17	26°35'31.04S	29°0'21.89E	Farm Portion
26	DEBANK OF VAALBANK	280	6	26°34'56.31S	29°1'20.1E	Farm Portion
27	ZANDFONTEIN	130	5	26°29'41.39S	29°2'39.53E	Farm Portion
28	ZANDFONTEIN	130	19	26°30'28.5S	29°1'42.59E	Farm Portion
29	SPRINGBOKDRAAI	277	2	26°31'50.75S	29°0'50.89E	Farm Portion
30	DEBANK OF VAALBANK	280	2	26°33'32.15S	29°1'49.75E	Farm Portion
31	DEBANK OF VAALBANK	280	1	26°33'25.79S	29°1'33.89E	Farm Portion
32	ROODEBANK	323	16	26°35'22.82S	29°0'14.72E	Farm Portion
33	ROODEBANK	323	20	26°36'29.28S	28°59'53.67E	Farm Portion
34	UITSPAN	529	0	26°36'19.17S	28°59'12.69E	Farm Portion
35	LEEUWPAN	532	16	26°35'54.12S	28°59'29.03E	Farm Portion
36	HOLGATSFONTEIN	535	18	26°38'13.13S	28°53'52.84E	Farm Portion
37	HOLGATSFONTEIN	535	4	26°37'13.87S	28°56'10.5E	Farm Portion
38	KAALSPRUIT	528	6	26°36'23.77S	28°54'51.57E	Farm Portion
39	KAALSPRUIT	528	2	26°35'45.08S	28°55'48.8E	Farm Portion
40	WOLVENFONTEIN	534	18	26°36'53S	28°57'0.23E	Farm Portion
41	WOLVENFONTEIN	534	20	26°36'49.85S	28°59'0.6E	Farm Portion
42	WOLVENFONTEIN	534	19	26°36'56.31S	28°58'6.23E	Farm Portion
43	HOLGATSFONTEIN	535	14	26°37'30.75S	28°55'23.29E	Farm Portion
44	PLATKOP	543	11	26°40'0.59S	28°52'52.3E	Farm Portion
45	MAHEMSFONTEIN	544	7	26°39'17.14S	28°50'39.68E	Farm Portion
46	LEEUWPAN	532	21	26°34'22.42S	28°59'20.96E	Farm Portion
47	KAALSPRUIT	528	7	26°35'53.62S	28°57'52.16E	Farm Portion
48	RASKOP -	538	1	26°36'33.94S	28°54'13.49E	Farm Portion
49	KAALSPRUIT	528	9	26°36'20.87S	28°57'13.1E	Farm Portion
50	HOLGATSFONTEIN	535	6	26°39'20.28S	28°54'27.13E	Farm Portion
51	HOLGATSFONTEIN	535	15	26°38'53.12S	28°54'10.61E	Farm Portion
52	PLATKOP	543	9	26°39'19.73S	28°51'59.4E	Farm Portion
53	PLATKOP	543	5	26°39'22.98S	28°51'22.67E	Farm Portion
54	MAHEMSFONTEIN	544	0	26°40'36.18S	28°50'44.76E	Farm Portion
55	WOLVENFONTEIN	534	1	26°37'21.12S	28°57'29.49E	Farm Portion
56	HOLGATSFONTEIN	535	19	26°37'54.68S	28°53'15.29E	Farm Portion
57	HOLGATSFONTEIN	535	16	26°38'23.03S	28°54'20.93E	Farm Portion
58	PLATKOP	543	4	26°39'15.94S	28°52'45.68E	Farm Portion

Development footprint¹ vertices:
No development footprint(s) specified.

Wind and Solar developments with an approved Environmental Authorisation or applications under consideration within 30 km of the proposed area

No nearby wind or solar developments found.

Environmental Management Frameworks relevant to the application

¹ “development footprint”, means the area within the site on which the development will take place and includes all ancillary developments for example roads, power lines, boundary walls, paving etc. which require vegetation clearance or which will be disturbed and for which the application has been submitted.

No intersections with EMF areas found.

Environmental screening results and assessment outcomes

The following sections contain a summary of any development incentives, restrictions, exclusions or prohibitions that apply to the proposed development site as well as the most environmental sensitive features on the site based on the site sensitivity screening results for the application classification that was selected. The application classification selected for this report is:

Utilities Infrastructure | Electricity | Distribution and Transmission | Powerline.

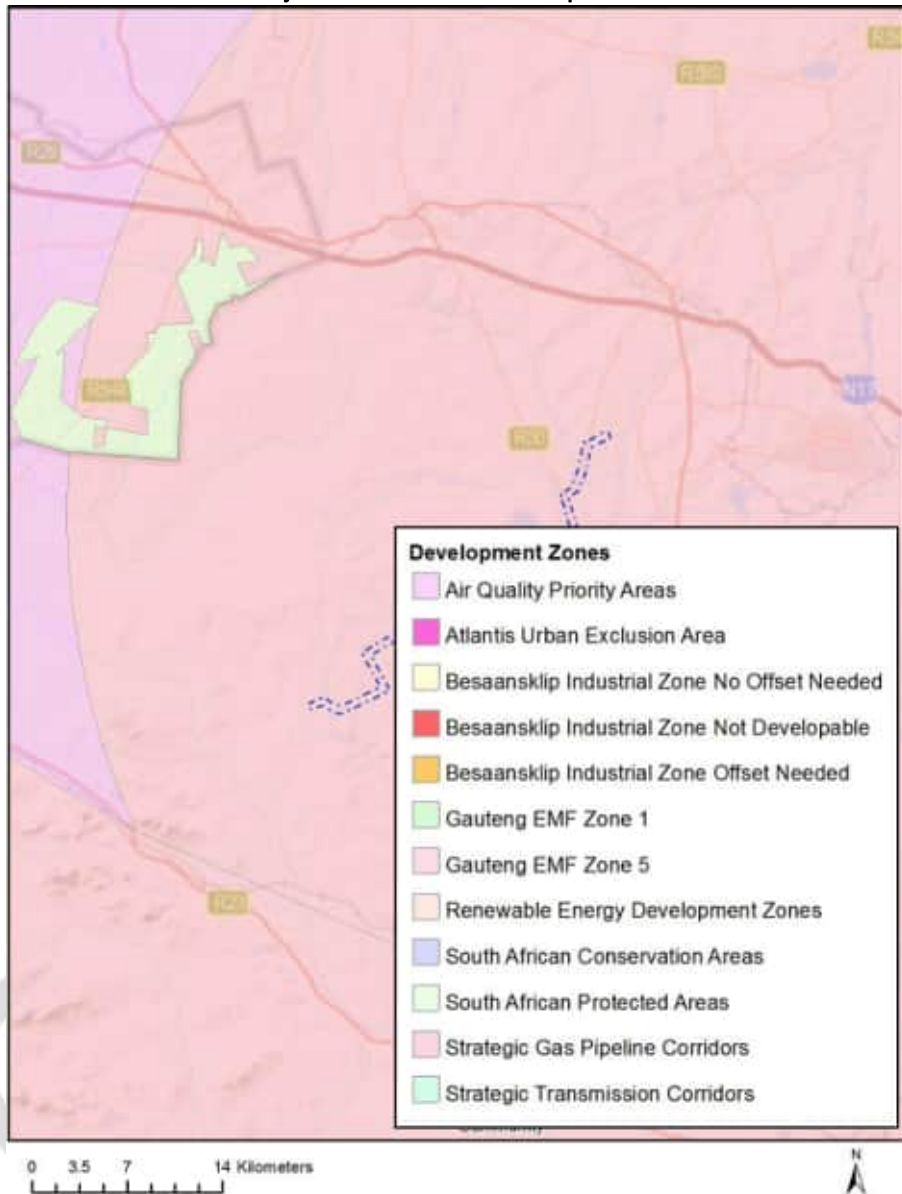
Relevant development incentives, restrictions, exclusions or prohibitions

The following development incentives, restrictions, exclusions or prohibitions and their implications that apply to this site are indicated below.

Incentive, restriction or prohibition	Implication
Air Quality-Highveld Priority Area	https://screening.environment.gov.za/ScreeningDownloads/DevelopmentZones/HIGHVELD_PRIORITY_AREA_AQMP.pdf
Strategic Gas Pipeline Corridors -Phase 8: Rompco Pipeline Corridor	https://screening.environment.gov.za/ScreeningDownloads/DevelopmentZones/Combined_GAS.pdf

Map indicating proposed development footprint within applicable development incentive, restriction, exclusion or prohibition zones

Project Location: Secunda Impumelelo



Proposed Development Area Environmental Sensitivity

The following summary of the development site environmental sensitivities is identified. Only the highest environmental sensitivity is indicated. The footprint environmental sensitivities for the proposed development footprint as identified, are indicative only and must be verified on site by a suitably qualified person before the specialist assessments identified below can be confirmed.

Theme	Very High sensitivity	High sensitivity	Medium sensitivity	Low sensitivity
Agriculture Theme	X			
Animal Species Theme		X		

Aquatic Biodiversity Theme	X			
Archaeological and Cultural Heritage Theme		X		
Civil Aviation Theme		X		
Defence Theme				X
Paleontology Theme	X			
Plant Species Theme			X	
Terrestrial Biodiversity Theme	X			

Specialist assessments identified

Based on the selected classification, and the environmental sensitivities of the proposed development footprint, the following list of specialist assessments have been identified for inclusion in the assessment report. It is the responsibility of the EAP to confirm this list and to motivate in the assessment report, the reason for not including any of the identified specialist study including the provision of photographic evidence of the site situation.

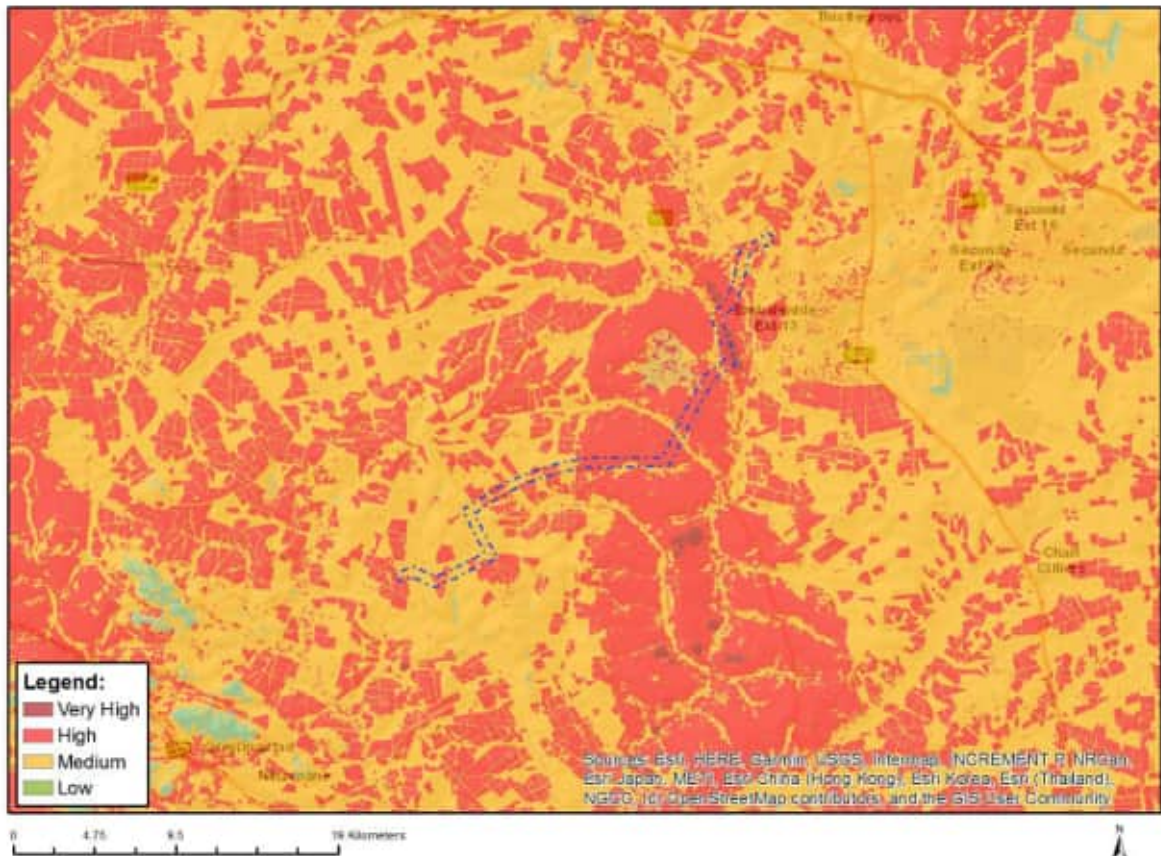
N o	Specialist assessment	Assessment Protocol
1	Agricultural Impact Assessment	https://screening.environment.gov.za/ScreeningDownloads/AssessmentProtocols/Gazetted General Agriculture Assessment Protocols.pdf
2	Landscape/Visual Impact Assessment	https://screening.environment.gov.za/ScreeningDownloads/AssessmentProtocols/Gazetted General Requirement Assessment Protocols.pdf
3	Archaeological and Cultural Heritage Impact Assessment	https://screening.environment.gov.za/ScreeningDownloads/AssessmentProtocols/Gazetted General Requirement Assessment Protocols.pdf
4	Palaeontology Impact Assessment	https://screening.environment.gov.za/ScreeningDownloads/AssessmentProtocols/Gazetted General Requirement Assessment Protocols.pdf
5	Terrestrial Biodiversity Impact Assessment	https://screening.environment.gov.za/ScreeningDownloads/AssessmentProtocols/Gazetted Terrestrial Biodiversity Assessment Protocols.pdf
6	Aquatic Biodiversity Impact Assessment	https://screening.environment.gov.za/ScreeningDownloads/AssessmentProtocols/Gazetted Aquatic Biodiversity Assessment Protocols.pdf

7	Avian Impact Assessment	https://screening.environment.gov.za/ScreeningDownloads/AssessmentProtocols/Gazetted Avifauna Assessment Protocols.pdf
8	Civil Aviation Assessment	https://screening.environment.gov.za/ScreeningDownloads/AssessmentProtocols/Gazetted Civil Aviation Installations Assessment Protocols.pdf
9	RFI Assessment	https://screening.environment.gov.za/ScreeningDownloads/AssessmentProtocols/Gazetted General Requirement Assessment Protocols.pdf
10	Geotechnical Assessment	https://screening.environment.gov.za/ScreeningDownloads/AssessmentProtocols/Gazetted General Requirement Assessment Protocols.pdf
11	Plant Species Assessment	https://screening.environment.gov.za/ScreeningDownloads/AssessmentProtocols/Gazetted Plant Species Assessment Protocols.pdf
12	Animal Species Assessment	https://screening.environment.gov.za/ScreeningDownloads/AssessmentProtocols/Gazetted Animal Species Assessment Protocols.pdf

Results of the environmental sensitivity of the proposed area.

The following section represents the results of the screening for environmental sensitivity of the proposed site for relevant environmental themes associated with the project classification. It is the duty of the EAP to ensure that the environmental themes provided by the screening tool are comprehensive and complete for the project. Refer to the disclaimer.

MAP OF RELATIVE AGRICULTURE THEME SENSITIVITY

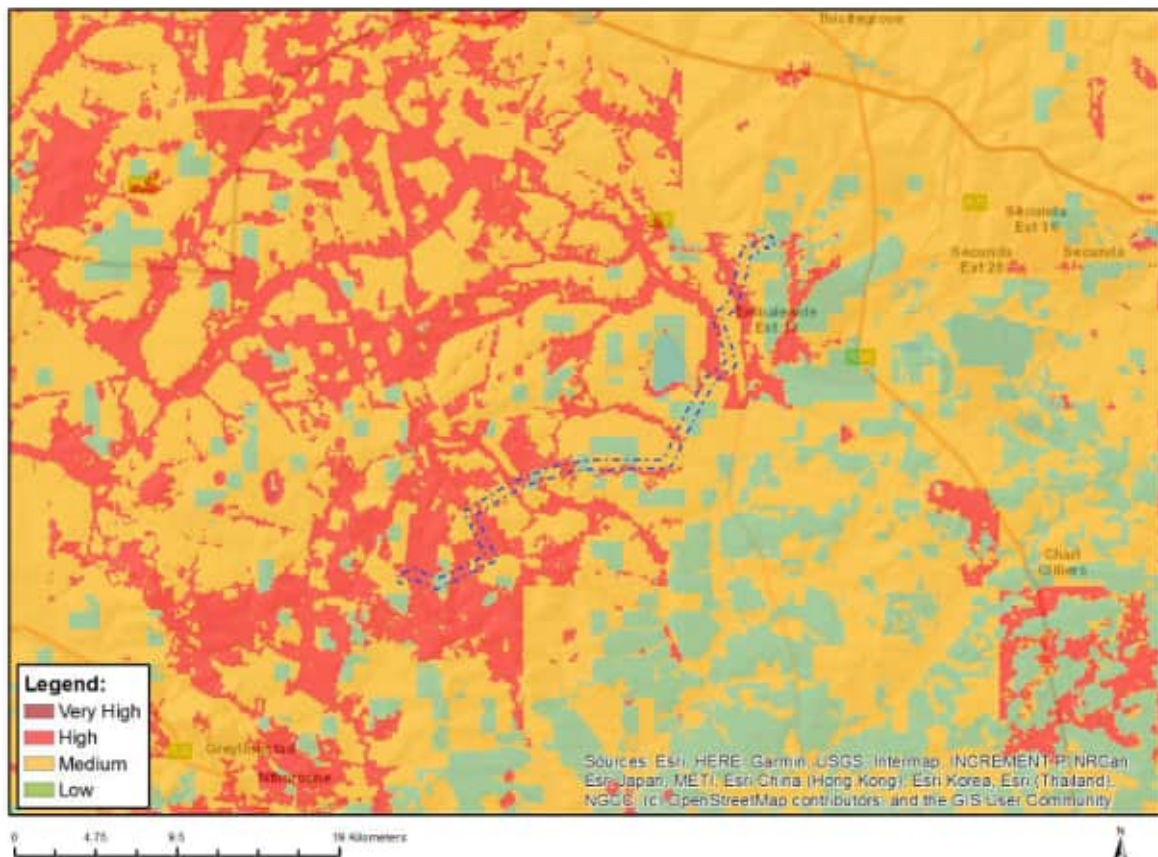


Very High sensitivity	High sensitivity	Medium sensitivity	Low sensitivity
X			

Sensitivity Features:

Sensitivity	Feature(s)
High	Land capability;09. Moderate-High/10. Moderate-High
High	Annual Crop Cultivation / Planted Pastures Rotation;Land capability;06. Low-Moderate/07. Low-Moderate/08. Moderate
High	Annual Crop Cultivation / Planted Pastures Rotation;Land capability;09. Moderate-High/10. Moderate-High
High	Old Fields;Land capability;06. Low-Moderate/07. Low-Moderate/08. Moderate
High	Old Fields;Land capability;09. Moderate-High/10. Moderate-High
Medium	Land capability;06. Low-Moderate/07. Low-Moderate/08. Moderate
Very High	Pivot Irrigation;Land capability;09. Moderate-High/10. Moderate-High

MAP OF RELATIVE ANIMAL SPECIES THEME SENSITIVITY



Where only a sensitive plant unique number or sensitive animal unique number is provided in the screening report and an assessment is required, the environmental assessment practitioner (EAP) or specialist is required to email SANBI at eiadatarequests@sanbi.org.za listing all sensitive species with their unique identifiers for which information is required. The name has been withheld as the species may be prone to illegal harvesting and must be protected. SANBI will release the actual species name after the details of the EAP or specialist have been documented.

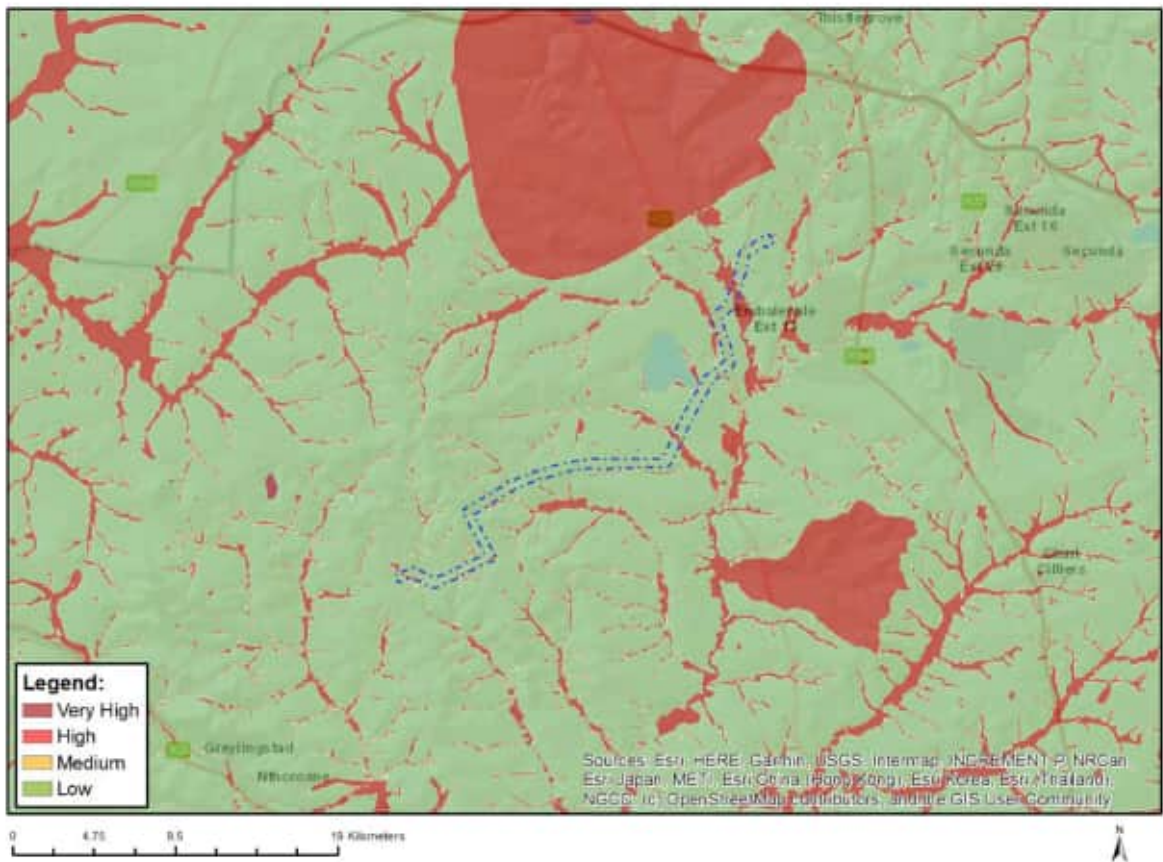
Very High sensitivity	High sensitivity	Medium sensitivity	Low sensitivity
	X		

Sensitivity Features:

Sensitivity	Feature(s)
High	Aves-Circus ranivorus
High	Aves-Hydroprogne caspia
High	Aves-Eupodotis senegalensis
High	Aves-Sagittarius serpentarius
Low	Subject to confirmation
Medium	Aves-Sagittarius serpentarius
Medium	Aves-Eupodotis senegalensis
Medium	Aves-Tyto capensis
Medium	Aves-Circus ranivorus
Medium	Aves-Hydroprogne caspia
Medium	Insecta-Lepidochrysops procera
Medium	Mammalia-Crocidura maquassiensis
Medium	Mammalia-Hydrictis maculicollis

Medium	Mammalia-Ourebia ourebi ourebi
--------	--------------------------------

MAP OF RELATIVE AQUATIC BIODIVERSITY THEME SENSITIVITY

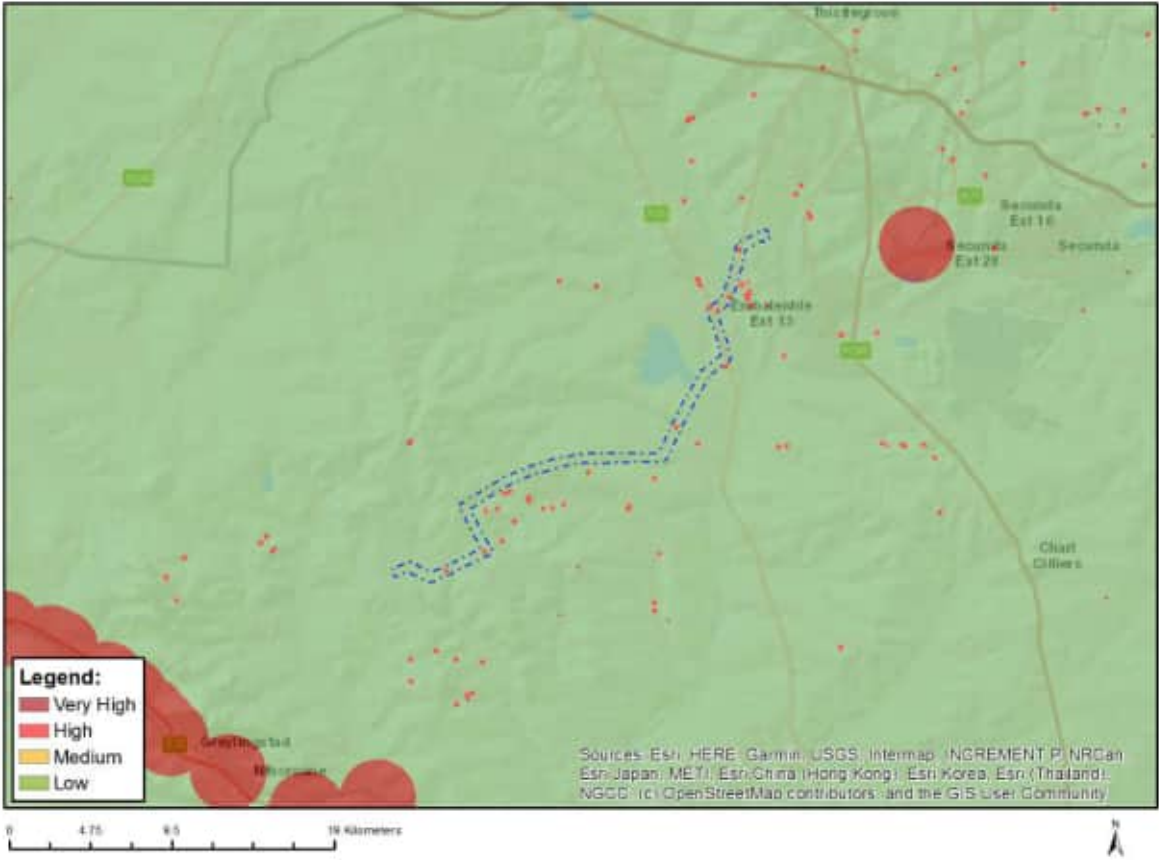


Very High sensitivity	High sensitivity	Medium sensitivity	Low sensitivity
X			

Sensitivity Features:

Sensitivity	Feature(s)
Low	Low sensitivity
Very High	Aquatic CBAs
Very High	Wetlands and Estuaries

MAP OF RELATIVE ARCHAEOLOGICAL AND CULTURAL HERITAGE THEME SENSITIVITY

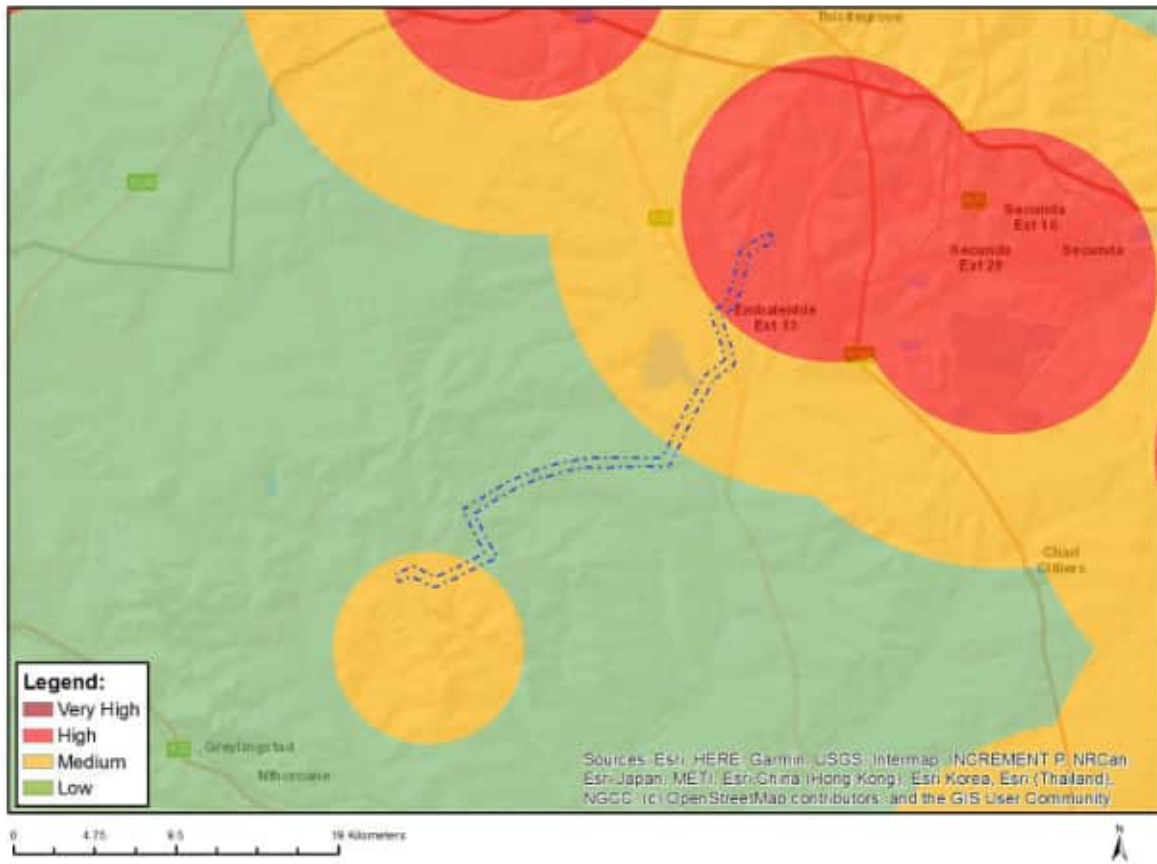


Very High sensitivity	High sensitivity	Medium sensitivity	Low sensitivity
	X		

Sensitivity Features:

Sensitivity	Feature(s)
High	Within 150m of a Grade IIIa Heritage site
Low	Low sensitivity

MAP OF RELATIVE CIVIL AVIATION THEME SENSITIVITY



Very High sensitivity	High sensitivity	Medium sensitivity	Low sensitivity
	X		

Sensitivity Features:

Sensitivity	Feature(s)
High	Within 8 km of other civil aviation aerodrome
Low	Low sensitivity
Medium	Within 5 km of an air traffic control or navigation site
Medium	Between 8 and 15 km of other civil aviation aerodrome

MAP OF RELATIVE DEFENCE THEME SENSITIVITY

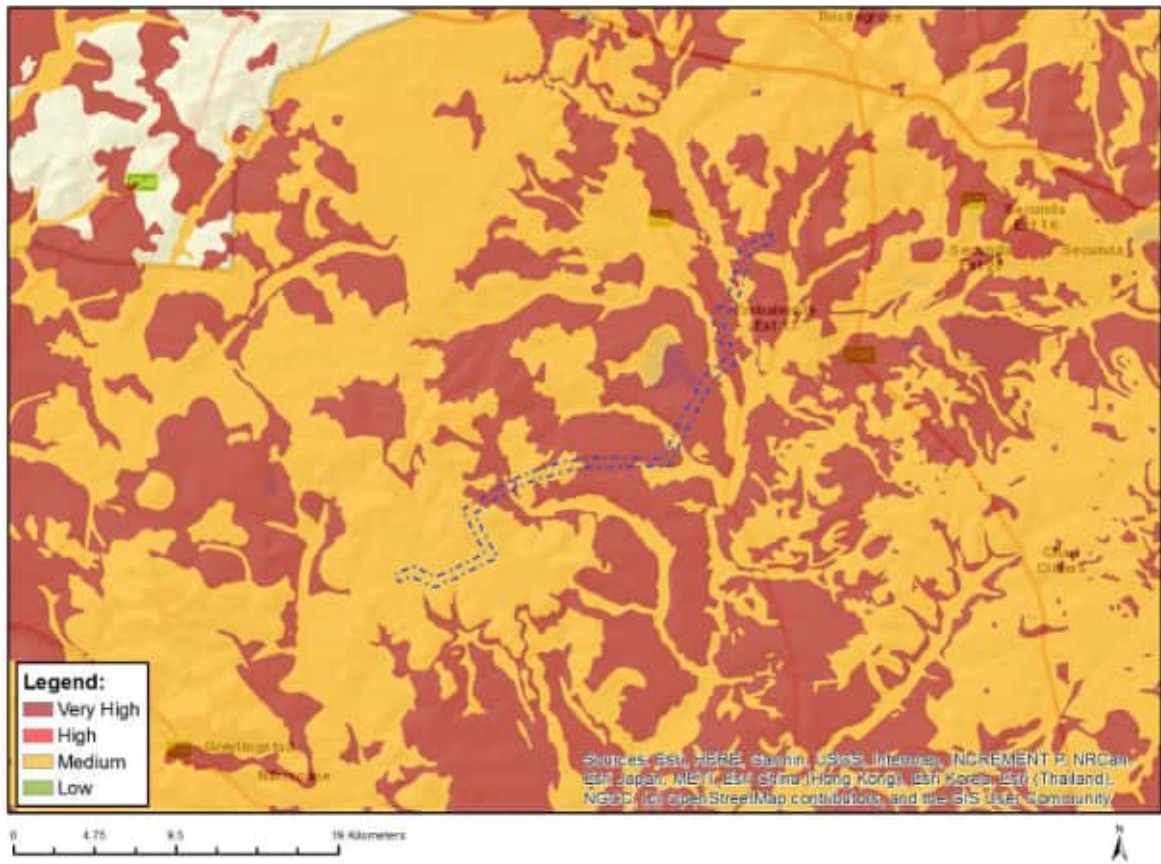


Very High sensitivity	High sensitivity	Medium sensitivity	Low sensitivity
			X

Sensitivity Features:

Sensitivity	Feature(s)
Low	Low Sensitivity

MAP OF RELATIVE PALEONTOLOGY THEME SENSITIVITY

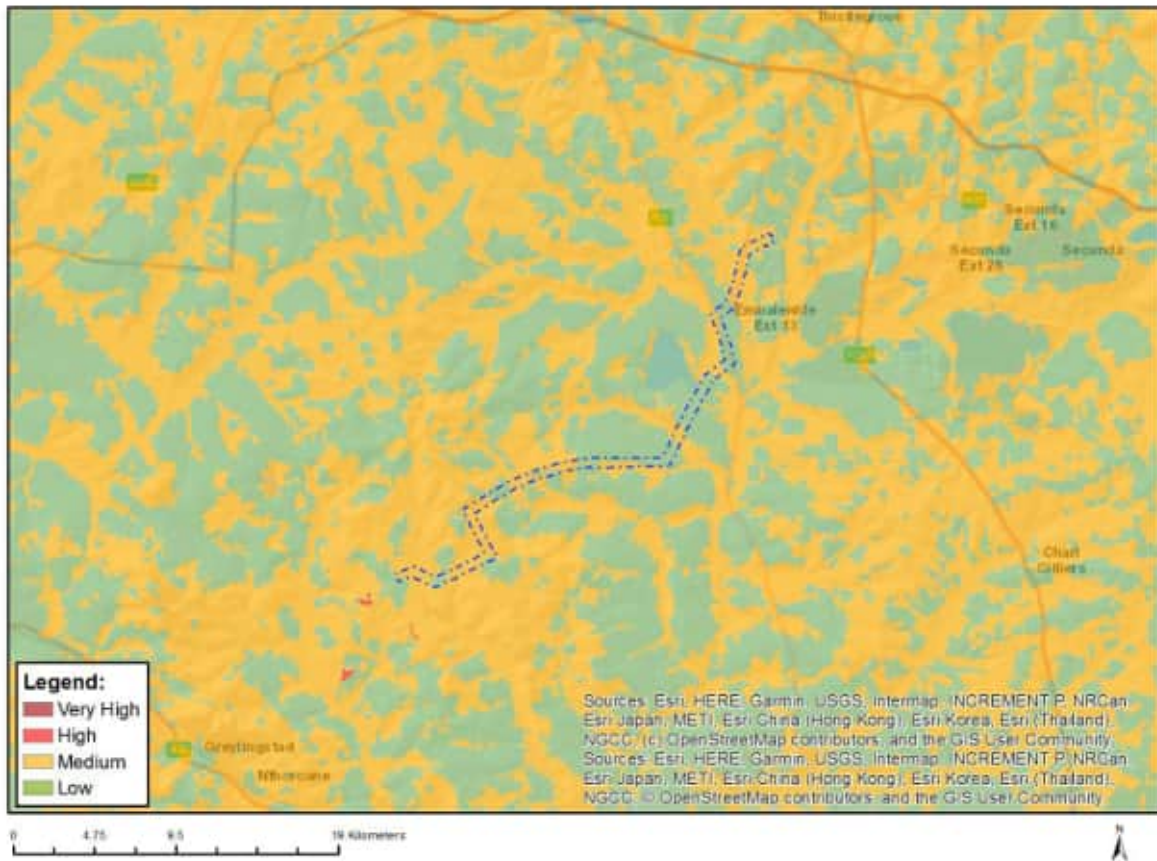


Very High sensitivity	High sensitivity	Medium sensitivity	Low sensitivity
X			

Sensitivity Features:

Sensitivity	Feature(s)
Medium	Features with a Medium paleontological sensitivity
Very High	Features with a Very High paleontological sensitivity

MAP OF RELATIVE PLANT SPECIES THEME SENSITIVITY



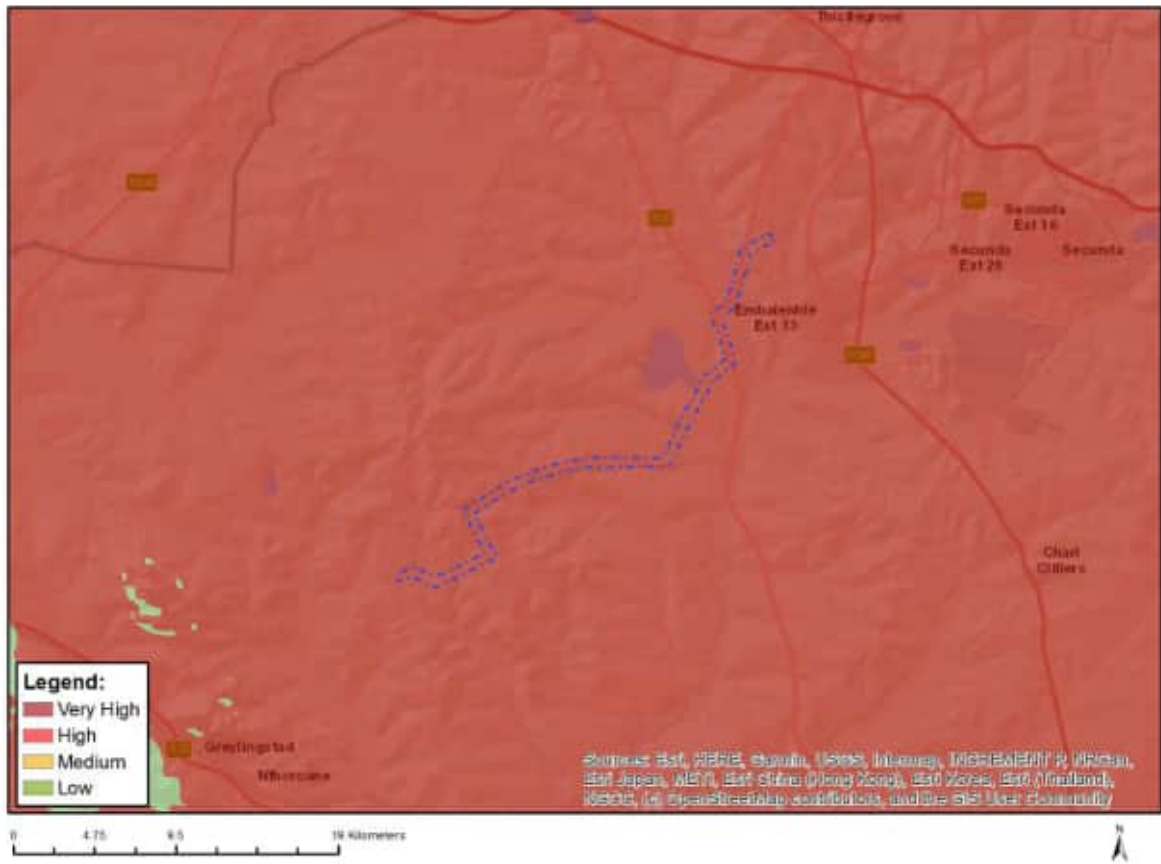
Where only a sensitive plant unique number or sensitive animal unique number is provided in the screening report and an assessment is required, the environmental assessment practitioner (EAP) or specialist is required to email SANBI at eiadatarequests@sanbi.org.za listing all sensitive species with their unique identifiers for which information is required. The name has been withheld as the species may be prone to illegal harvesting and must be protected. SANBI will release the actual species name after the details of the EAP or specialist have been documented.

Very High sensitivity	High sensitivity	Medium sensitivity	Low sensitivity
		X	

Sensitivity Features:

Sensitivity	Feature(s)
Low	Low Sensitivity
Medium	Sensitive species 1252
Medium	Khadia beswickii
Medium	Sensitive species 691
Medium	Pachycarpus suaveolens

MAP OF RELATIVE TERRESTRIAL BIODIVERSITY THEME SENSITIVITY



Very High sensitivity	High sensitivity	Medium sensitivity	Low sensitivity
X			

Sensitivity Features:

Sensitivity	Feature(s)
Very High	Critical biodiversity area 1
Very High	Critical biodiversity area 2
Very High	Ecological support area: local corridor
Very High	Protected Areas Expansion Strategy
Very High	Vulnerable ecosystem

**SCREENING REPORT FOR AN ENVIRONMENTAL AUTHORIZATION AS
REQUIRED BY THE 2014 EIA REGULATIONS – PROPOSED SITE
ENVIRONMENTAL SENSITIVITY**

EIA Reference number:

Project name: Secunda Impumelelo

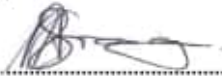
Project title: 132kv Gridline Option 2 (250m buffer)

Date screening report generated: 07/02/2023 10:18:29

Applicant: Enertrag

Compiler: WSP Group Africa (Pty) Ltd

Compiler signature:



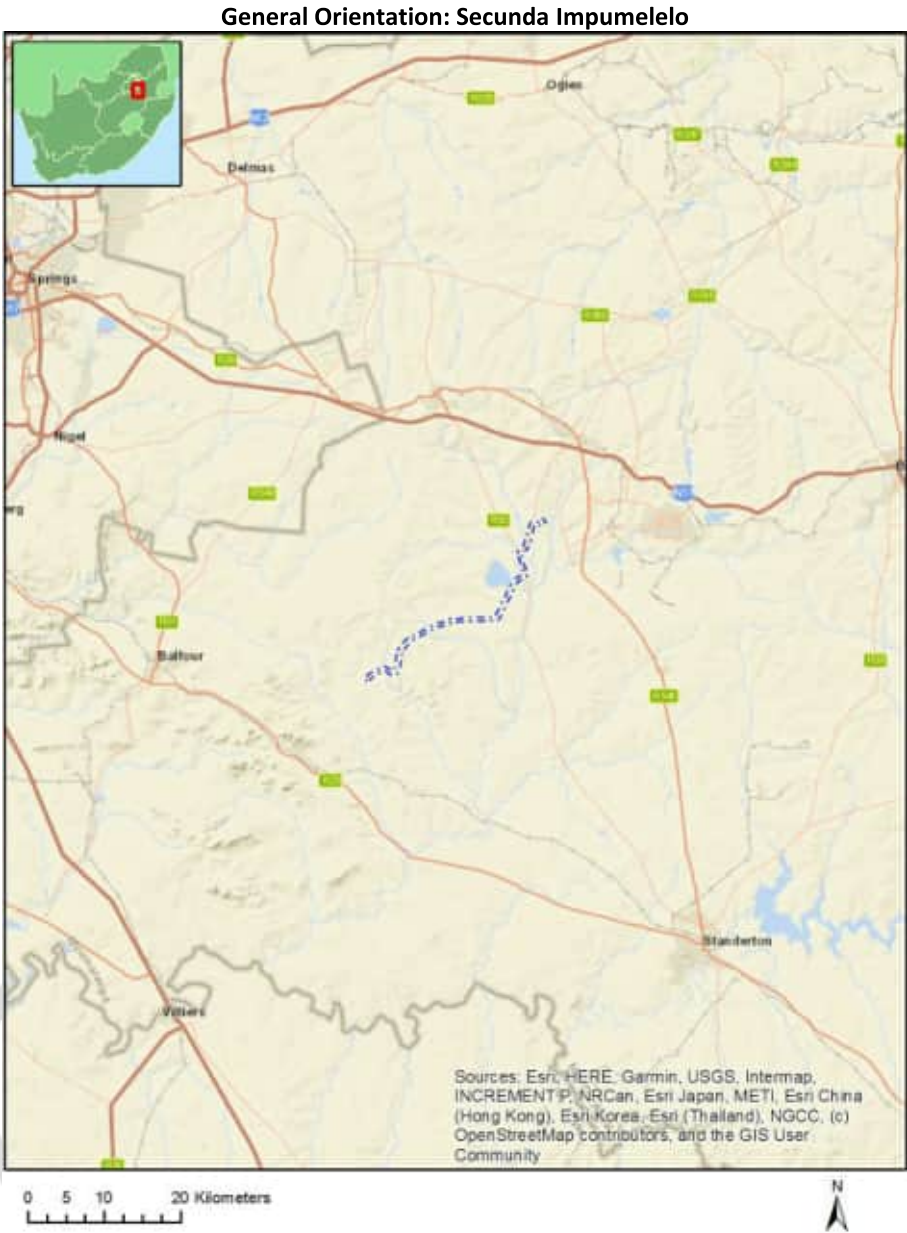
Application Category: Utilities Infrastructure | Electricity | Distribution and Transmission | Powerline

Table of Contents

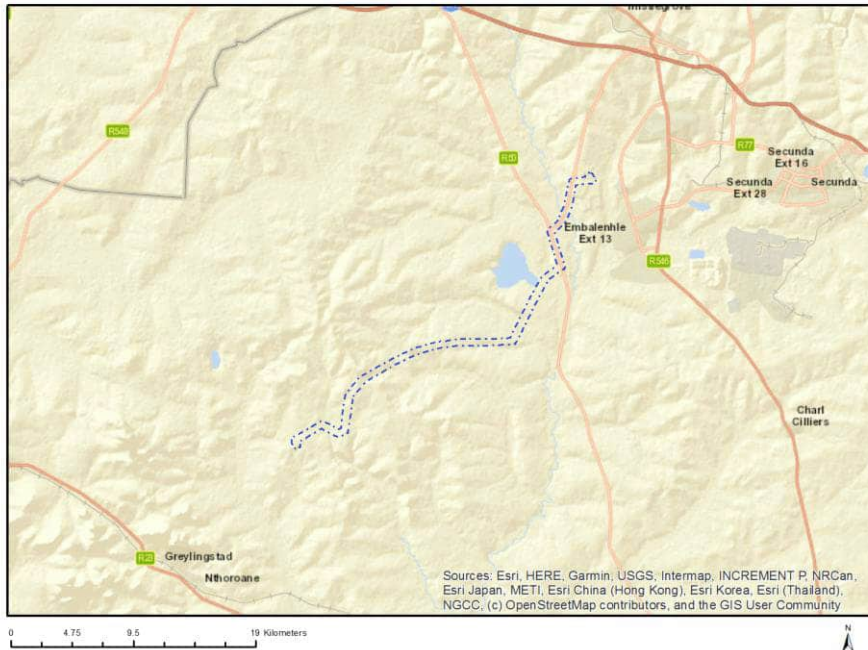
- Proposed Project Location 3
 - Orientation map 1: General location 3
- Map of proposed site and relevant area(s) 4
 - Cadastral details of the proposed site 4
 - Wind and Solar developments with an approved Environmental Authorisation or applications under consideration within 30 km of the proposed area 5
 - Environmental Management Frameworks relevant to the application 5
- Environmental screening results and assessment outcomes 6
 - Relevant development incentives, restrictions, exclusions or prohibitions 6
- Map indicating proposed development footprint within applicable development incentive, restriction, exclusion or prohibition zones 7
 - Proposed Development Area Environmental Sensitivity 7
 - Specialist assessments identified 8
- Results of the environmental sensitivity of the proposed area 10
 - MAP OF RELATIVE AGRICULTURE THEME SENSITIVITY 10
 - MAP OF RELATIVE ANIMAL SPECIES THEME SENSITIVITY 11
 - MAP OF RELATIVE AQUATIC BIODIVERSITY THEME SENSITIVITY 12
 - MAP OF RELATIVE ARCHAEOLOGICAL AND CULTURAL HERITAGE THEME SENSITIVITY 13
 - MAP OF RELATIVE CIVIL AVIATION THEME SENSITIVITY 14
 - MAP OF RELATIVE DEFENCE THEME SENSITIVITY 15
 - MAP OF RELATIVE PALEONTOLOGY THEME SENSITIVITY 16
 - MAP OF RELATIVE PLANT SPECIES THEME SENSITIVITY 17
 - MAP OF RELATIVE TERRESTRIAL BIODIVERSITY THEME SENSITIVITY 18

Proposed Project Location

Orientation map 1: General location



Map of proposed site and relevant area(s)



Cadastral details of the proposed site

Property details:

No	Farm Name	Farm/ Erf No	Portion	Latitude	Longitude	Property Type
1	SPRINGBOKDRAAI	277	0	26°31'45.08S	29°0'59.2E	Farm
2	DEBANK OF VAALBANK	280	0	26°34'20.14S	29°1'30.42E	Farm
3	MAHEMSFONTEIN	544	0	26°41'10.65S	28°50'22.65E	Farm
4	UITSPAN	529	0	26°36'19.17S	28°59'12.69E	Farm
5	ROODEBANK	323	0	26°36'49.67S	29°0'33.3E	Farm
6	WOLVENFONTEIN	534	0	26°37'49.14S	28°58'12.27E	Farm
7	ZANDFONTEIN	130	0	26°29'54S	29°2'7.52E	Farm
8	GROOTSPRUIT	279	0	26°32'33.79S	29°2'52.71E	Farm
9	LEEUWPAN	532	0	26°34'20.79S	28°58'39.32E	Farm
10	RASKOP -	538	0	26°36'36.4S	28°54'13.81E	Farm
11	KAALSPRUIT	528	0	26°35'55.63S	28°55'52.3E	Farm
12	HOLGATSFONTEIN	535	0	26°38'14.48S	28°55'0.1E	Farm
13	PLATKOP	543	0	26°40'16.26S	28°52'40.71E	Farm
14		677	0	26°37'15.42S	28°52'17.63E	Farm
15	ZANDFONTEIN	130	9	26°31'12.03S	29°2'19.38E	Farm Portion
16	SPRINGBOKDRAAI	277	3	26°32'15.31S	29°1'24E	Farm Portion
17	GROOTSPRUIT	279	0	26°31'32.22S	29°2'26.77E	Farm Portion
18	ZANDFONTEIN	130	5	26°29'41.39S	29°2'39.53E	Farm Portion
19	ZANDFONTEIN	130	19	26°30'28.5S	29°1'42.59E	Farm Portion
20	SPRINGBOKDRAAI	277	2	26°31'50.75S	29°0'50.89E	Farm Portion
21	SPRINGBOKDRAAI	277	0	26°32'48.83S	29°1'47.84E	Farm Portion
22	ZANDFONTEIN	130	3	26°30'39.1S	29°1'40.18E	Farm Portion
23	DEBANK OF VAALBANK	280	4	26°33'49.48S	29°1'9.79E	Farm Portion
24	KAALSPRUIT	528	6	26°36'23.77S	28°54'51.57E	Farm Portion
25	KAALSPRUIT	528	2	26°35'45.08S	28°55'48.8E	Farm Portion

26	WOLVENFONTEIN	534	18	26°36'53S	28°57'0.23E	Farm Portion
27	WOLVENFONTEIN	534	20	26°36'49.85S	28°59'0.6E	Farm Portion
28	DEBANK OF VAALBANK	280	6	26°34'56.31S	29°1'20.1E	Farm Portion
29	ZANDFONTEIN	130	8	26°30'51.26S	29°2'17.99E	Farm Portion
30	ZANDFONTEIN	130	2	26°30'42.16S	29°1'57.99E	Farm Portion
31	SPRINGBOKDRAAI	277	5	26°33'0.79S	29°1'11.85E	Farm Portion
32	DEBANK OF VAALBANK	280	0	26°34'10.45S	29°1'41.12E	Farm Portion
33	ROODEBANK	323	17	26°35'31.04S	29°0'21.89E	Farm Portion
34	DEBANK OF VAALBANK	280	2	26°33'32.15S	29°1'49.75E	Farm Portion
35	LEEUWPAN	532	21	26°34'22.42S	28°59'20.96E	Farm Portion
36	DEBANK OF VAALBANK	280	1	26°33'25.79S	29°1'33.89E	Farm Portion
37	ROODEBANK	323	16	26°35'22.82S	29°0'14.72E	Farm Portion
38	ROODEBANK	323	20	26°36'29.28S	28°59'53.67E	Farm Portion
39	UITSPAN	529	0	26°36'19.17S	28°59'12.69E	Farm Portion
40	LEEUWPAN	532	16	26°35'54.12S	28°59'29.03E	Farm Portion
41	HOLGATSFONTEIN	535	4	26°37'13.87S	28°56'10.5E	Farm Portion
42	PLATKOP	543	5	26°39'22.98S	28°51'22.67E	Farm Portion
43	KAALSPRUIT	528	7	26°35'53.62S	28°57'52.16E	Farm Portion
44	RASKOP -	538	1	26°36'33.94S	28°54'13.49E	Farm Portion
45	WOLVENFONTEIN	534	19	26°36'56.31S	28°58'6.23E	Farm Portion
46	HOLGATSFONTEIN	535	14	26°37'30.75S	28°55'23.29E	Farm Portion
47	PLATKOP	543	11	26°40'0.59S	28°52'52.3E	Farm Portion
48	MAHEMSFONTEIN	544	7	26°39'17.14S	28°50'39.68E	Farm Portion
49	KAALSPRUIT	528	9	26°36'20.87S	28°57'13.1E	Farm Portion
50	WOLVENFONTEIN	534	1	26°37'21.12S	28°57'29.49E	Farm Portion
51	HOLGATSFONTEIN	535	19	26°37'54.68S	28°53'15.29E	Farm Portion
52	PLATKOP	543	4	26°39'15.94S	28°52'45.68E	Farm Portion
53	PLATKOP	543	9	26°39'19.73S	28°51'59.4E	Farm Portion
54	MAHEMSFONTEIN	544	8	26°39'58.18S	28°50'19.76E	Farm Portion
55	MAHEMSFONTEIN	544	0	26°40'36.18S	28°50'44.76E	Farm Portion

Development footprint¹ vertices:
No development footprint(s) specified.

Wind and Solar developments with an approved Environmental Authorisation or applications under consideration within 30 km of the proposed area

No nearby wind or solar developments found.

Environmental Management Frameworks relevant to the application

No intersections with EMF areas found.

¹ “development footprint”, means the area within the site on which the development will take place and includes all ancillary developments for example roads, power lines, boundary walls, paving etc. which require vegetation clearance or which will be disturbed and for which the application has been submitted.

Environmental screening results and assessment outcomes

The following sections contain a summary of any development incentives, restrictions, exclusions or prohibitions that apply to the proposed development site as well as the most environmental sensitive features on the site based on the site sensitivity screening results for the application classification that was selected. The application classification selected for this report is:

Utilities Infrastructure | Electricity | Distribution and Transmission | Powerline.

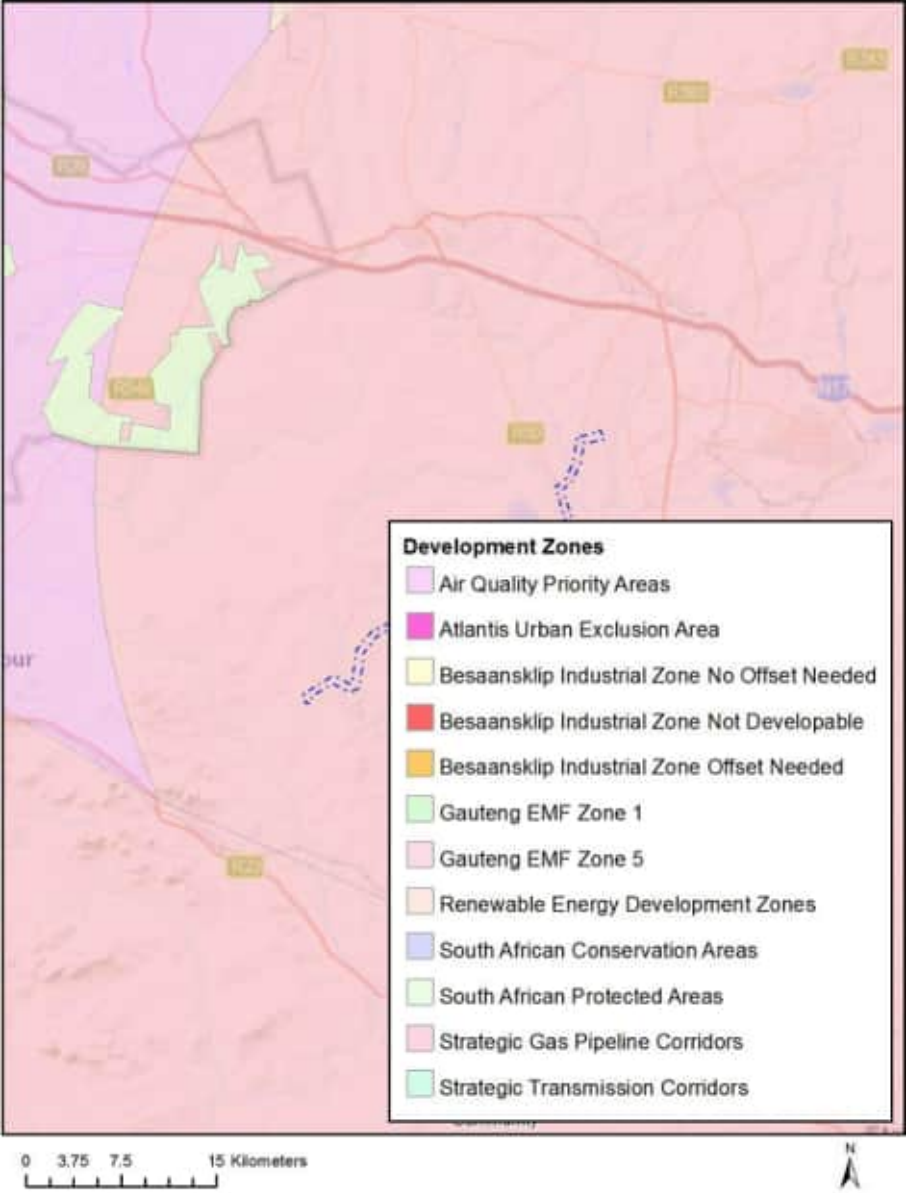
Relevant development incentives, restrictions, exclusions or prohibitions

The following development incentives, restrictions, exclusions or prohibitions and their implications that apply to this site are indicated below.

Incentive, restriction or prohibition	Implication
Air Quality-Highveld Priority Area	https://screening.environment.gov.za/ScreeningDownloads/DevelopmentZones/HIGHVELD_PRIORITY_AREA_AQMP.pdf
Strategic Gas Pipeline Corridors -Phase 8: Rompco Pipeline Corridor	https://screening.environment.gov.za/ScreeningDownloads/DevelopmentZones/Combined_GAS.pdf

Map indicating proposed development footprint within applicable development incentive, restriction, exclusion or prohibition zones

Project Location: Secunda Impumelelo



Proposed Development Area Environmental Sensitivity

The following summary of the development site environmental sensitivities is identified. Only the highest environmental sensitivity is indicated. The footprint environmental sensitivities for the proposed development footprint as identified, are indicative only and must be verified on site by a suitably qualified person before the specialist assessments identified below can be confirmed.

Theme	Very High sensitivity	High sensitivity	Medium sensitivity	Low sensitivity
Agriculture Theme	X			
Animal Species Theme		X		

Aquatic Biodiversity Theme	X			
Archaeological and Cultural Heritage Theme		X		
Civil Aviation Theme		X		
Defence Theme				X
Paleontology Theme	X			
Plant Species Theme			X	
Terrestrial Biodiversity Theme	X			

Specialist assessments identified

Based on the selected classification, and the environmental sensitivities of the proposed development footprint, the following list of specialist assessments have been identified for inclusion in the assessment report. It is the responsibility of the EAP to confirm this list and to motivate in the assessment report, the reason for not including any of the identified specialist study including the provision of photographic evidence of the site situation.

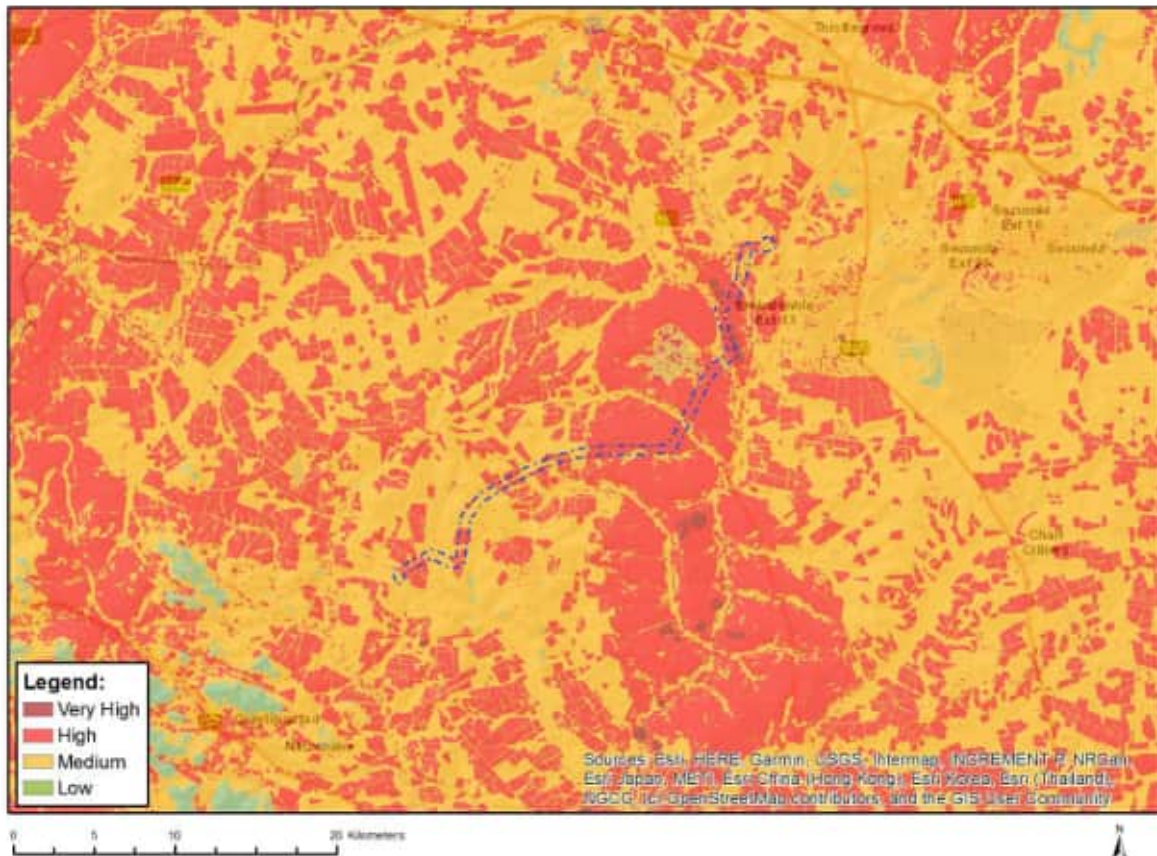
N o	Specialist assessment	Assessment Protocol
1	Agricultural Impact Assessment	https://screening.environment.gov.za/ScreeningDownloads/AssessmentProtocols/Gazetted General Agriculture Assessment Protocols.pdf
2	Landscape/Visual Impact Assessment	https://screening.environment.gov.za/ScreeningDownloads/AssessmentProtocols/Gazetted General Requirement Assessment Protocols.pdf
3	Archaeological and Cultural Heritage Impact Assessment	https://screening.environment.gov.za/ScreeningDownloads/AssessmentProtocols/Gazetted General Requirement Assessment Protocols.pdf
4	Palaeontology Impact Assessment	https://screening.environment.gov.za/ScreeningDownloads/AssessmentProtocols/Gazetted General Requirement Assessment Protocols.pdf
5	Terrestrial Biodiversity Impact Assessment	https://screening.environment.gov.za/ScreeningDownloads/AssessmentProtocols/Gazetted Terrestrial Biodiversity Assessment Protocols.pdf
6	Aquatic Biodiversity Impact Assessment	https://screening.environment.gov.za/ScreeningDownloads/AssessmentProtocols/Gazetted Aquatic Biodiversity Assessment Protocols.pdf

7	Avian Impact Assessment	https://screening.environment.gov.za/ScreeningDownloads/AssessmentProtocols/Gazetted Avifauna Assessment Protocols.pdf
8	Civil Aviation Assessment	https://screening.environment.gov.za/ScreeningDownloads/AssessmentProtocols/Gazetted Civil Aviation Installations Assessment Protocols.pdf
9	RFI Assessment	https://screening.environment.gov.za/ScreeningDownloads/AssessmentProtocols/Gazetted General Requirement Assessment Protocols.pdf
10	Geotechnical Assessment	https://screening.environment.gov.za/ScreeningDownloads/AssessmentProtocols/Gazetted General Requirement Assessment Protocols.pdf
11	Plant Species Assessment	https://screening.environment.gov.za/ScreeningDownloads/AssessmentProtocols/Gazetted Plant Species Assessment Protocols.pdf
12	Animal Species Assessment	https://screening.environment.gov.za/ScreeningDownloads/AssessmentProtocols/Gazetted Animal Species Assessment Protocols.pdf

Results of the environmental sensitivity of the proposed area.

The following section represents the results of the screening for environmental sensitivity of the proposed site for relevant environmental themes associated with the project classification. It is the duty of the EAP to ensure that the environmental themes provided by the screening tool are comprehensive and complete for the project. Refer to the disclaimer.

MAP OF RELATIVE AGRICULTURE THEME SENSITIVITY

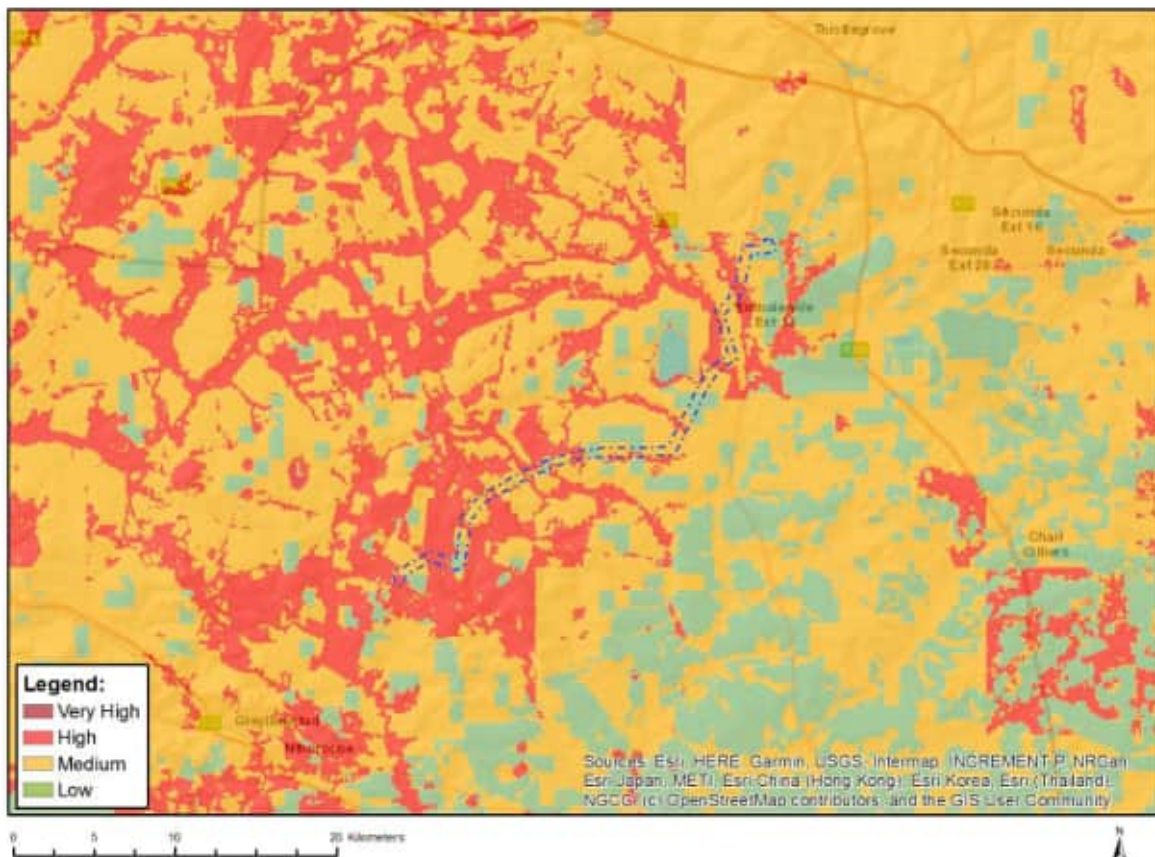


Very High sensitivity	High sensitivity	Medium sensitivity	Low sensitivity
X			

Sensitivity Features:

Sensitivity	Feature(s)
High	Land capability;09. Moderate-High/10. Moderate-High
High	Annual Crop Cultivation / Planted Pastures Rotation;Land capability;09. Moderate-High/10. Moderate-High
High	Annual Crop Cultivation / Planted Pastures Rotation;Land capability;06. Low-Moderate/07. Low-Moderate/08. Moderate
High	Old Fields;Land capability;06. Low-Moderate/07. Low-Moderate/08. Moderate
High	Old Fields;Land capability;09. Moderate-High/10. Moderate-High
Medium	Land capability;06. Low-Moderate/07. Low-Moderate/08. Moderate
Very High	Pivot Irrigation;Land capability;09. Moderate-High/10. Moderate-High

MAP OF RELATIVE ANIMAL SPECIES THEME SENSITIVITY



Where only a sensitive plant unique number or sensitive animal unique number is provided in the screening report and an assessment is required, the environmental assessment practitioner (EAP) or specialist is required to email SANBI at eiadatarequests@sanbi.org.za listing all sensitive species with their unique identifiers for which information is required. The name has been withheld as the species may be prone to illegal harvesting and must be protected. SANBI will release the actual species name after the details of the EAP or specialist have been documented.

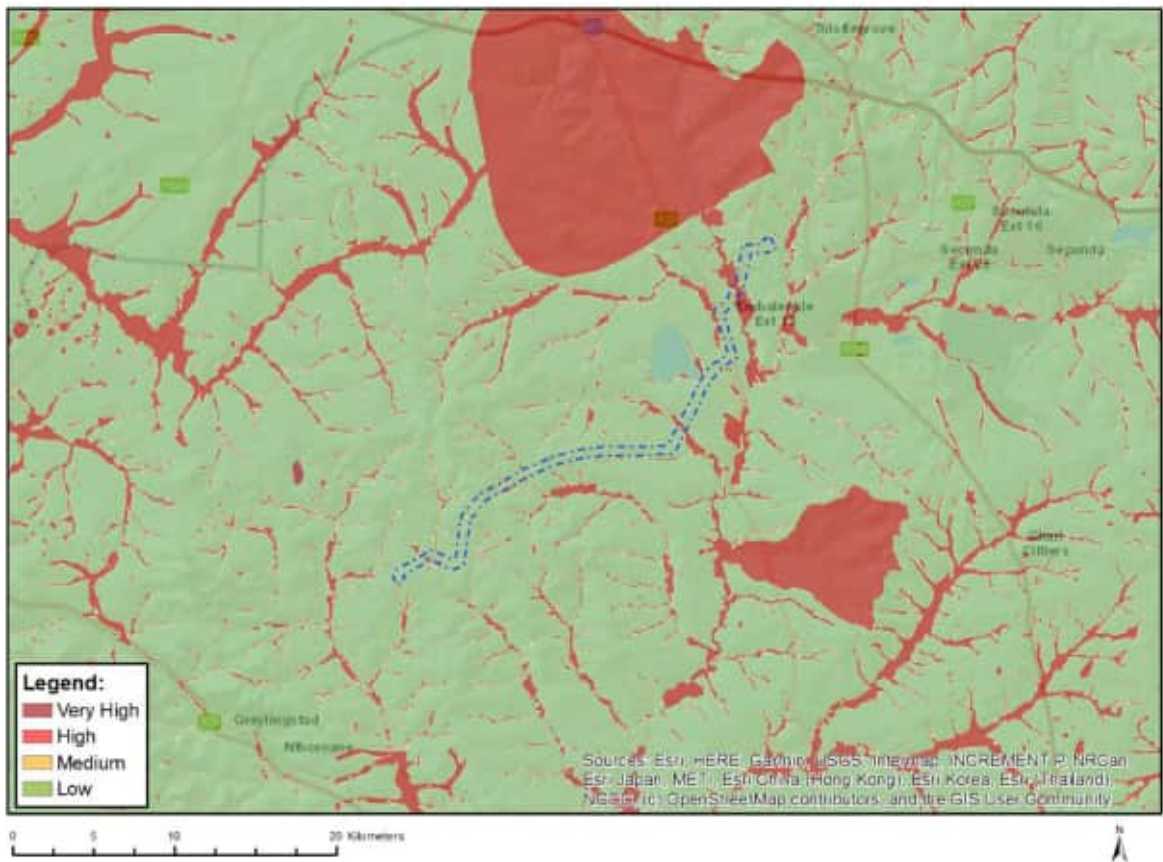
Very High sensitivity	High sensitivity	Medium sensitivity	Low sensitivity
	X		

Sensitivity Features:

Sensitivity	Feature(s)
High	Aves-Circus ranivorus
High	Aves-Hydroprogne caspia
High	Aves-Eupodotis senegalensis
High	Aves-Sagittarius serpentarius
Low	Subject to confirmation
Medium	Aves-Sagittarius serpentarius
Medium	Aves-Eupodotis senegalensis
Medium	Aves-Tyto capensis
Medium	Aves-Circus ranivorus
Medium	Aves-Hydroprogne caspia
Medium	Insecta-Lepidochrysops procera
Medium	Mammalia-Crocidura maquassiensis
Medium	Mammalia-Hydrictis maculicollis

Medium	Mammalia-Ourebia ourebi ourebi
--------	--------------------------------

MAP OF RELATIVE AQUATIC BIODIVERSITY THEME SENSITIVITY

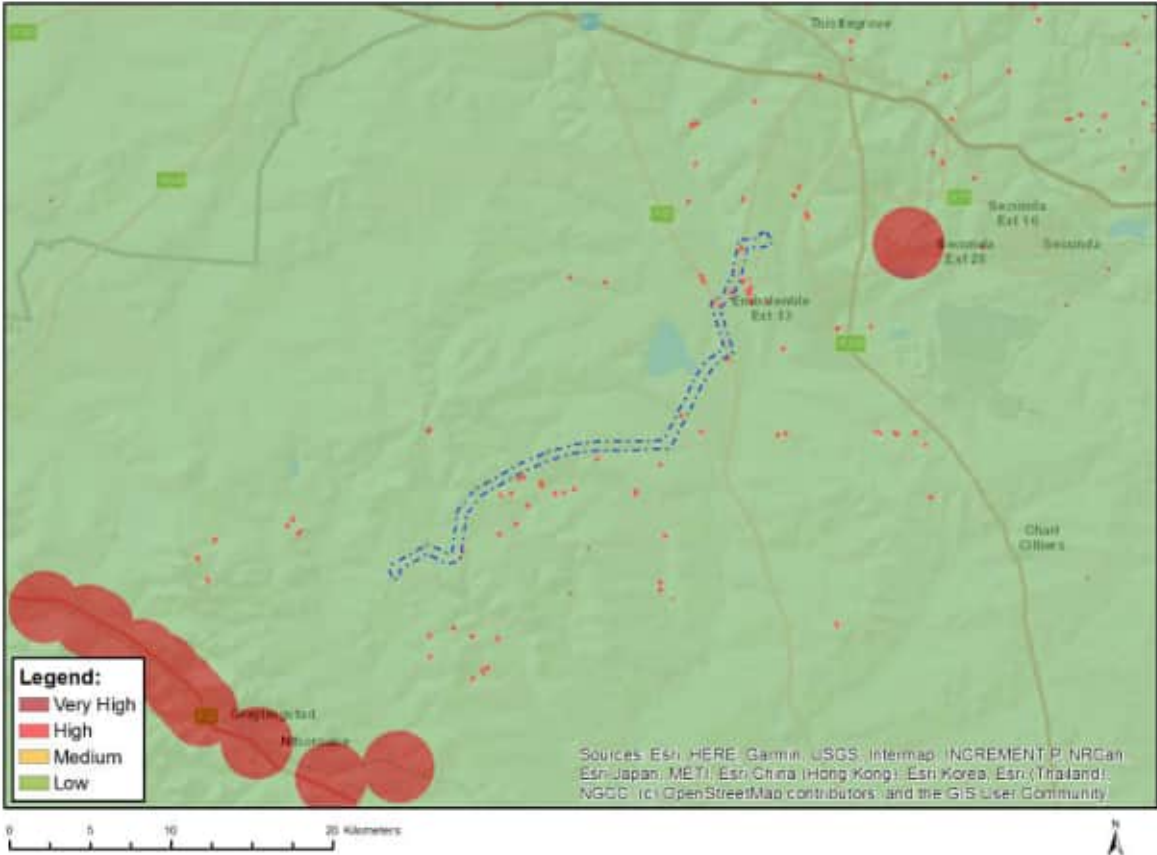


Very High sensitivity	High sensitivity	Medium sensitivity	Low sensitivity
X			

Sensitivity Features:

Sensitivity	Feature(s)
Low	Low sensitivity
Very High	Wetlands and Estuaries

MAP OF RELATIVE ARCHAEOLOGICAL AND CULTURAL HERITAGE THEME SENSITIVITY

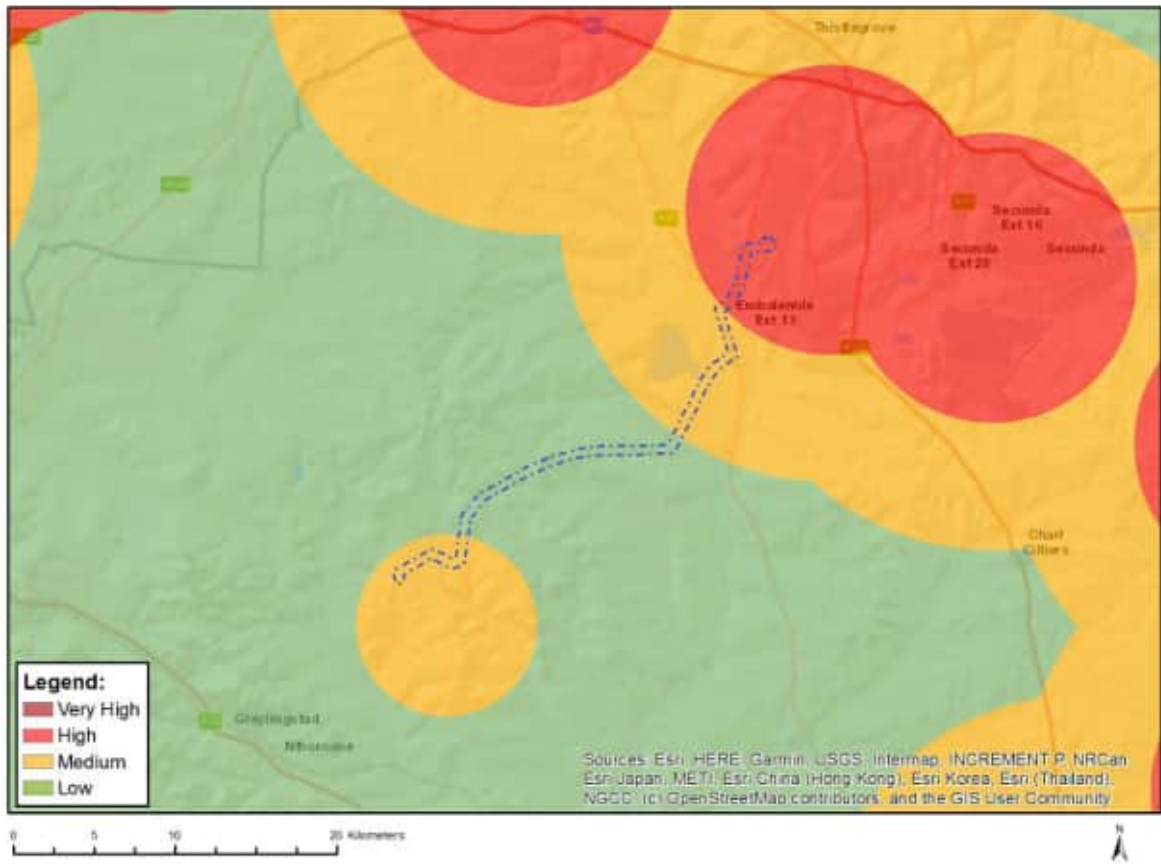


Very High sensitivity	High sensitivity	Medium sensitivity	Low sensitivity
	X		

Sensitivity Features:

Sensitivity	Feature(s)
High	Within 150m of a Grade IIIa Heritage site
Low	Low sensitivity

MAP OF RELATIVE CIVIL AVIATION THEME SENSITIVITY



Very High sensitivity	High sensitivity	Medium sensitivity	Low sensitivity
	X		

Sensitivity Features:

Sensitivity	Feature(s)
High	Within 8 km of other civil aviation aerodrome
Low	Low sensitivity
Medium	Within 5 km of an air traffic control or navigation site
Medium	Between 8 and 15 km of other civil aviation aerodrome

MAP OF RELATIVE DEFENCE THEME SENSITIVITY

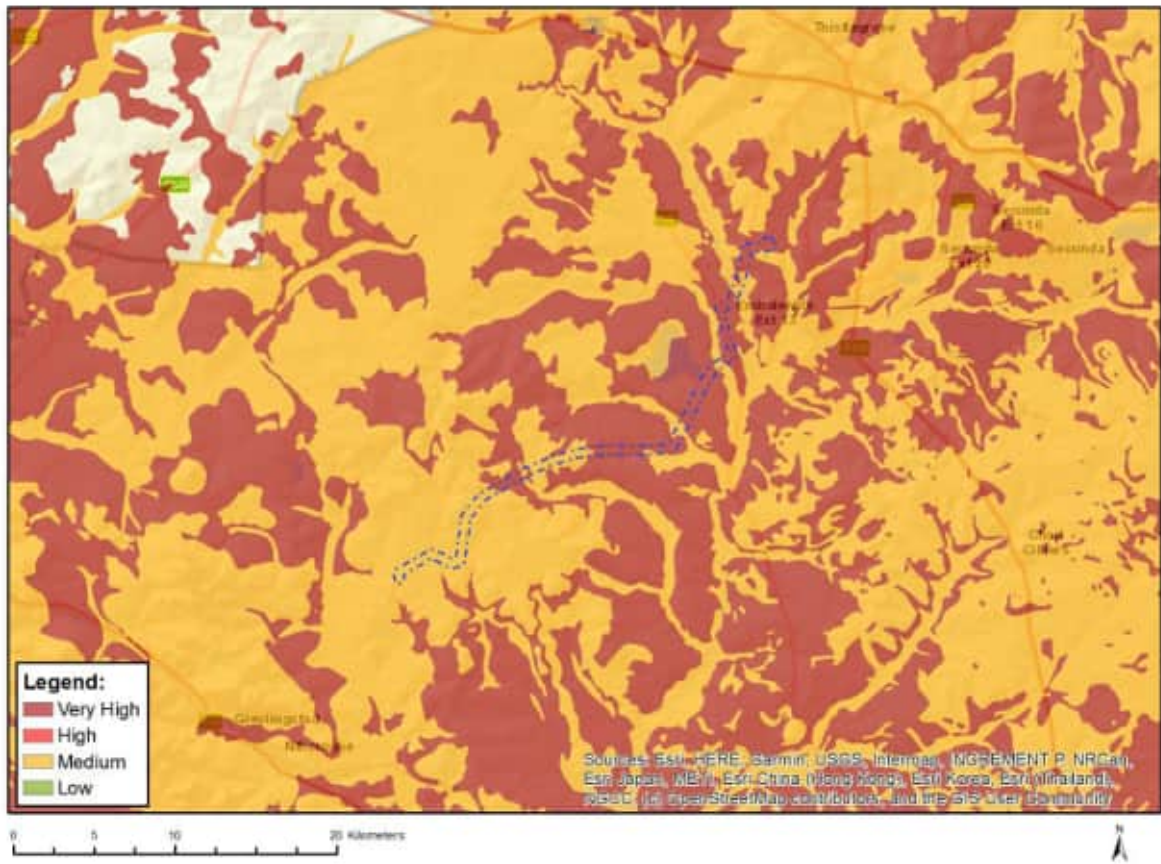


Very High sensitivity	High sensitivity	Medium sensitivity	Low sensitivity
			X

Sensitivity Features:

Sensitivity	Feature(s)
Low	Low Sensitivity

MAP OF RELATIVE PALEONTOLOGY THEME SENSITIVITY

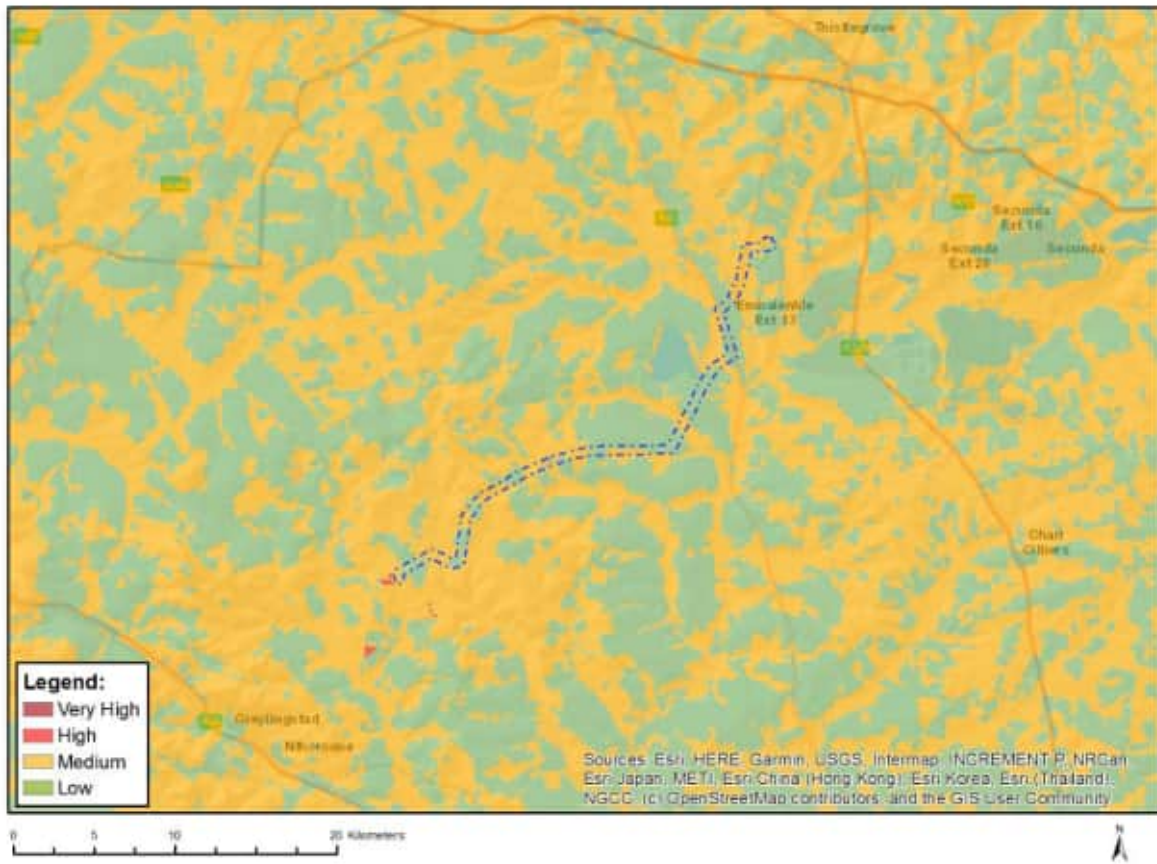


Very High sensitivity	High sensitivity	Medium sensitivity	Low sensitivity
X			

Sensitivity Features:

Sensitivity	Feature(s)
Medium	Features with a Medium paleontological sensitivity
Very High	Features with a Very High paleontological sensitivity

MAP OF RELATIVE PLANT SPECIES THEME SENSITIVITY



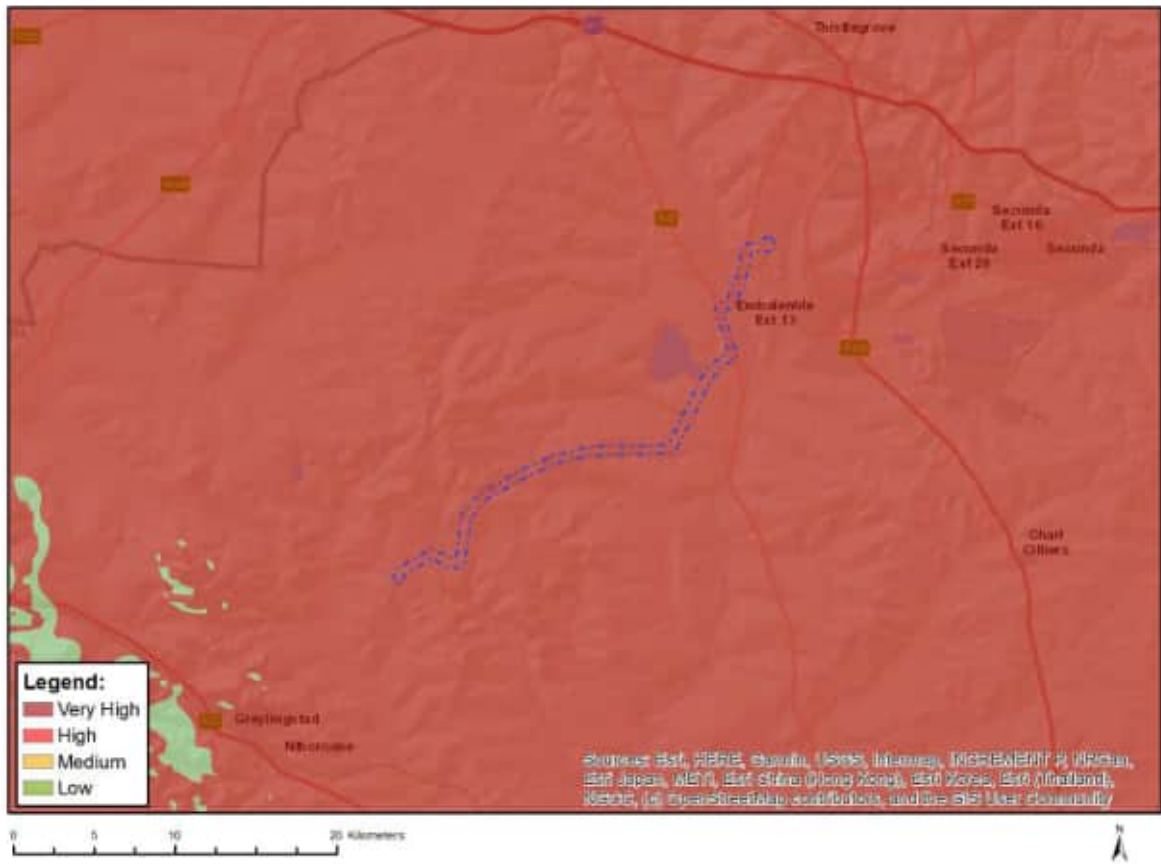
Where only a sensitive plant unique number or sensitive animal unique number is provided in the screening report and an assessment is required, the environmental assessment practitioner (EAP) or specialist is required to email SANBI at eiadatarequests@sanbi.org.za listing all sensitive species with their unique identifiers for which information is required. The name has been withheld as the species may be prone to illegal harvesting and must be protected. SANBI will release the actual species name after the details of the EAP or specialist have been documented.

Very High sensitivity	High sensitivity	Medium sensitivity	Low sensitivity
		X	

Sensitivity Features:

Sensitivity	Feature(s)
Low	Low Sensitivity
Medium	Sensitive species 1252
Medium	Khadia beswickii
Medium	Sensitive species 691
Medium	Pachycarpus suaveolens

MAP OF RELATIVE TERRESTRIAL BIODIVERSITY THEME SENSITIVITY



Very High sensitivity	High sensitivity	Medium sensitivity	Low sensitivity
X			

Sensitivity Features:

Sensitivity	Feature(s)
Very High	Critical biodiversity area 1
Very High	Critical biodiversity area 2
Very High	Ecological support area: landscape corridor
Very High	Ecological support area: local corridor
Very High	Protected Areas Expansion Strategy
Very High	Vulnerable ecosystem

**SCREENING REPORT FOR AN ENVIRONMENTAL AUTHORIZATION AS
REQUIRED BY THE 2014 EIA REGULATIONS – PROPOSED SITE
ENVIRONMENTAL SENSITIVITY**

EIA Reference number:

Project name: Secunda Impumelelo

Project title: Substation - Option 1

Date screening report generated: 07/02/2023 08:01:22

Applicant: Enertrag

Compiler: WSP Group Africa (Pty) Ltd

Compiler signature:

.....

Application Category: Utilities Infrastructure | Electricity | Distribution and
Transmission | Substation

Table of Contents

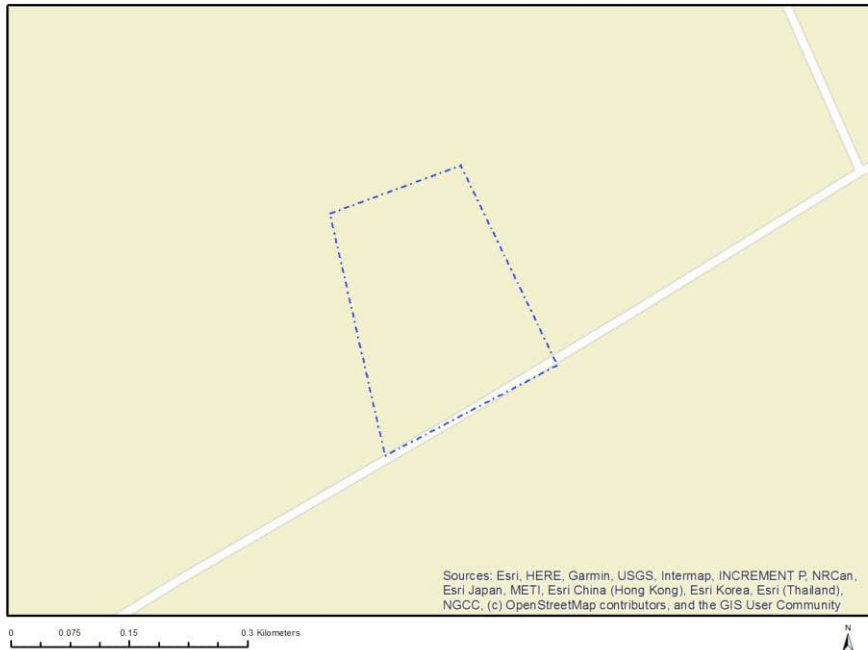
- Proposed Project Location 3
 - Orientation map 1: General location 3
- Map of proposed site and relevant area(s) 4
 - Cadastral details of the proposed site 4
 - Wind and Solar developments with an approved Environmental Authorisation or applications under consideration within 30 km of the proposed area 4
 - Environmental Management Frameworks relevant to the application 4
- Environmental screening results and assessment outcomes 5
 - Relevant development incentives, restrictions, exclusions or prohibitions 5
- Map indicating proposed development footprint within applicable development incentive, restriction, exclusion or prohibition zones 6
 - Proposed Development Area Environmental Sensitivity 6
 - Specialist assessments identified 7
- Results of the environmental sensitivity of the proposed area 9
 - MAP OF RELATIVE AGRICULTURE THEME SENSITIVITY 9
 - MAP OF RELATIVE ANIMAL SPECIES THEME SENSITIVITY 10
 - MAP OF RELATIVE AQUATIC BIODIVERSITY THEME SENSITIVITY 11
 - MAP OF RELATIVE ARCHAEOLOGICAL AND CULTURAL HERITAGE THEME SENSITIVITY 12
 - MAP OF RELATIVE CIVIL AVIATION THEME SENSITIVITY 13
 - MAP OF RELATIVE DEFENCE THEME SENSITIVITY 14
 - MAP OF RELATIVE PALEONTOLOGY THEME SENSITIVITY 15
 - MAP OF RELATIVE PLANT SPECIES THEME SENSITIVITY 16
 - MAP OF RELATIVE TERRESTRIAL BIODIVERSITY THEME SENSITIVITY 17

Proposed Project Location

Orientation map 1: General location



Map of proposed site and relevant area(s)



Cadastral details of the proposed site

Property details:

No	Farm Name	Farm/ Erf No	Portion	Latitude	Longitude	Property Type
1	PLATKOP	543	0	26°40'16.26S	28°52'40.71E	Farm
2	PLATKOP	543	5	26°39'22.98S	28°51'22.67E	Farm Portion

Development footprint¹ vertices:

No development footprint(s) specified.

Wind and Solar developments with an approved Environmental Authorisation or applications under consideration within 30 km of the proposed area

No nearby wind or solar developments found.

Environmental Management Frameworks relevant to the application

No intersections with EMF areas found.

¹ "development footprint", means the area within the site on which the development will take place and includes all ancillary developments for example roads, power lines, boundary walls, paving etc. which require vegetation clearance or which will be disturbed and for which the application has been submitted.

Environmental screening results and assessment outcomes

The following sections contain a summary of any development incentives, restrictions, exclusions or prohibitions that apply to the proposed development site as well as the most environmental sensitive features on the site based on the site sensitivity screening results for the application classification that was selected. The application classification selected for this report is:

Utilities Infrastructure | Electricity | Distribution and Transmission | Substation.

Relevant development incentives, restrictions, exclusions or prohibitions

The following development incentives, restrictions, exclusions or prohibitions and their implications that apply to this site are indicated below.

Incentive, restriction or prohibition	Implication
Air Quality-Highveld Priority Area	https://screening.environment.gov.za/ScreeningDownloads/DevelopmentZones/HIGHVELD_PRIORITY_AREA_AQMP.pdf
Strategic Gas Pipeline Corridors -Phase 8: Rompco Pipeline Corridor	https://screening.environment.gov.za/ScreeningDownloads/DevelopmentZones/Combined_GAS.pdf

Map indicating proposed development footprint within applicable development incentive, restriction, exclusion or prohibition zones



Proposed Development Area Environmental Sensitivity

The following summary of the development site environmental sensitivities is identified. Only the highest environmental sensitivity is indicated. The footprint environmental sensitivities for the proposed development footprint as identified, are indicative only and must be verified on site by a suitably qualified person before the specialist assessments identified below can be confirmed.

Theme	Very High sensitivity	High sensitivity	Medium sensitivity	Low sensitivity
Agriculture Theme		X		
Animal Species Theme		X		

Aquatic Biodiversity Theme				X
Archaeological and Cultural Heritage Theme				X
Civil Aviation Theme			X	
Defence Theme				X
Paleontology Theme			X	
Plant Species Theme			X	
Terrestrial Biodiversity Theme	X			

Specialist assessments identified

Based on the selected classification, and the environmental sensitivities of the proposed development footprint, the following list of specialist assessments have been identified for inclusion in the assessment report. It is the responsibility of the EAP to confirm this list and to motivate in the assessment report, the reason for not including any of the identified specialist study including the provision of photographic evidence of the site situation.

N o	Specialist assessment	Assessment Protocol
1	Agricultural Impact Assessment	https://screening.environment.gov.za/ScreeningDownloads/AssessmentProtocols/Gazetted General Agriculture Assessment Protocols.pdf
2	Archaeological and Cultural Heritage Impact Assessment	https://screening.environment.gov.za/ScreeningDownloads/AssessmentProtocols/Gazetted General Requirement Assessment Protocols.pdf
3	Palaeontology Impact Assessment	https://screening.environment.gov.za/ScreeningDownloads/AssessmentProtocols/Gazetted General Requirement Assessment Protocols.pdf
4	Terrestrial Biodiversity Impact Assessment	https://screening.environment.gov.za/ScreeningDownloads/AssessmentProtocols/Gazetted Terrestrial Biodiversity Assessment Protocols.pdf
5	Aquatic Biodiversity Impact Assessment	https://screening.environment.gov.za/ScreeningDownloads/AssessmentProtocols/Gazetted Aquatic Biodiversity Assessment Protocols.pdf
6	Geotechnical Assess	https://screening.environment.gov.za/ScreeningDownloads/AssessmentProtocols/Gazetted General Requirement Assessment Protocols.pdf

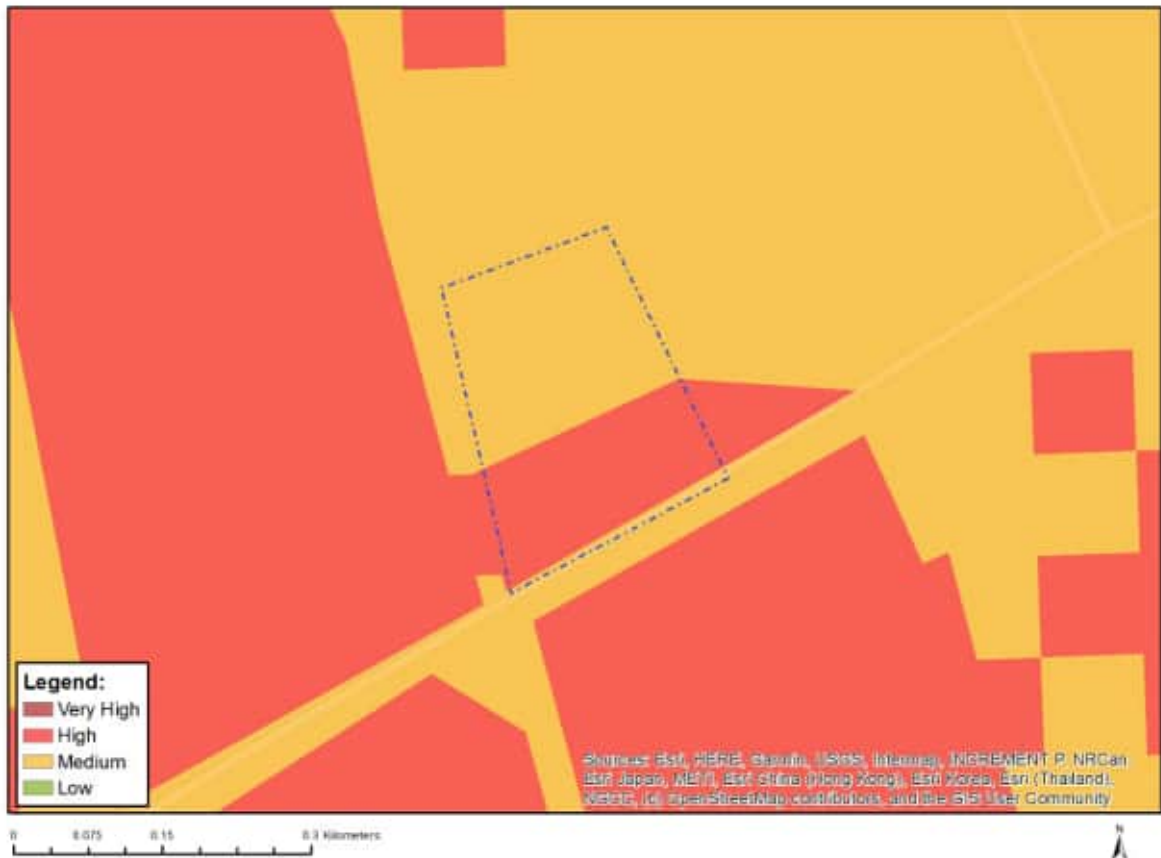
	ment	
7	Plant Species Assessment	https://screening.environment.gov.za/ScreeningDownloads/AssessmentProtocols/Gazetted Plant Species Assessment Protocols.pdf
8	Animal Species Assessment	https://screening.environment.gov.za/ScreeningDownloads/AssessmentProtocols/Gazetted Animal Species Assessment Protocols.pdf

OFFICIAL

Results of the environmental sensitivity of the proposed area.

The following section represents the results of the screening for environmental sensitivity of the proposed site for relevant environmental themes associated with the project classification. It is the duty of the EAP to ensure that the environmental themes provided by the screening tool are comprehensive and complete for the project. Refer to the disclaimer.

MAP OF RELATIVE AGRICULTURE THEME SENSITIVITY

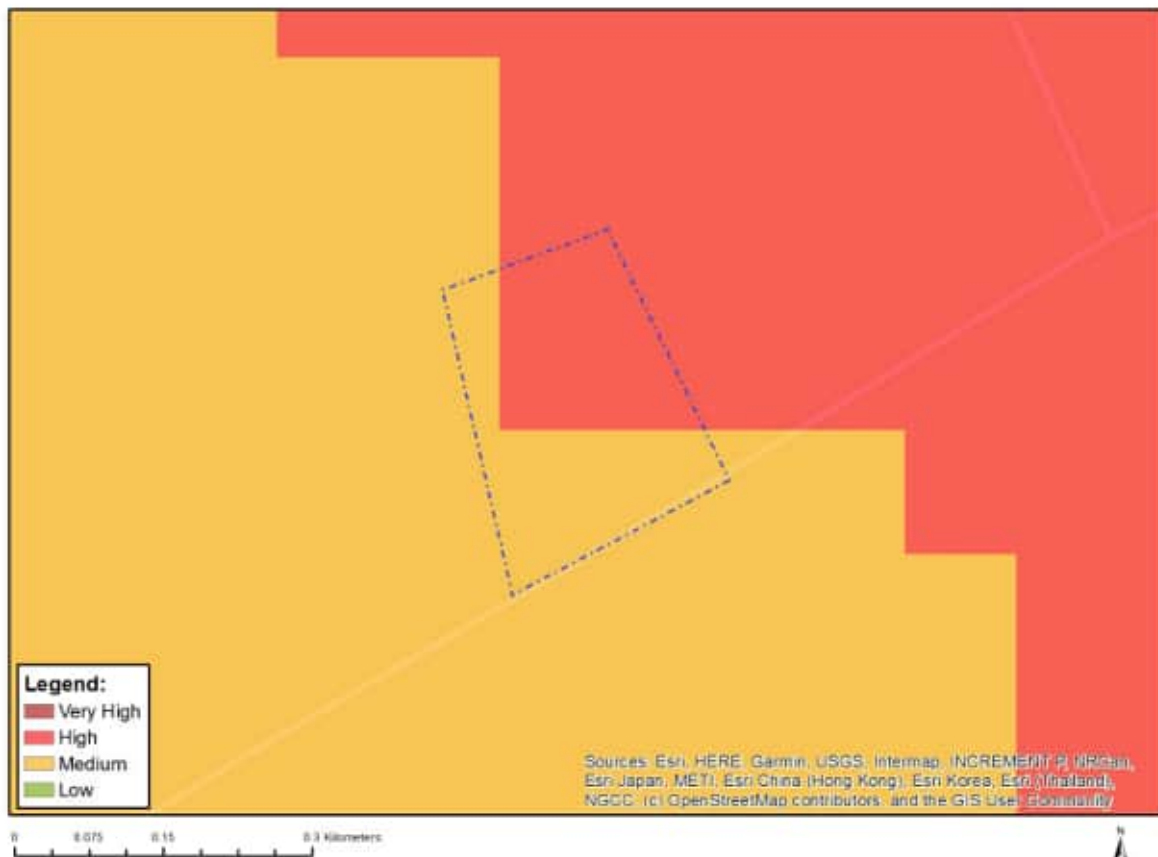


Very High sensitivity	High sensitivity	Medium sensitivity	Low sensitivity
	X		

Sensitivity Features:

Sensitivity	Feature(s)
High	Annual Crop Cultivation / Planted Pastures Rotation; Land capability; 09. Moderate-High/10. Moderate-High
High	Annual Crop Cultivation / Planted Pastures Rotation; Land capability; 06. Low-Moderate/07. Low-Moderate/08. Moderate
Medium	Land capability; 06. Low-Moderate/07. Low-Moderate/08. Moderate

MAP OF RELATIVE ANIMAL SPECIES THEME SENSITIVITY



Where only a sensitive plant unique number or sensitive animal unique number is provided in the screening report and an assessment is required, the environmental assessment practitioner (EAP) or specialist is required to email SANBI at eiadatarequests@sanbi.org.za listing all sensitive species with their unique identifiers for which information is required. The name has been withheld as the species may be prone to illegal harvesting and must be protected. SANBI will release the actual species name after the details of the EAP or specialist have been documented.

Very High sensitivity	High sensitivity	Medium sensitivity	Low sensitivity
	X		

Sensitivity Features:

Sensitivity	Feature(s)
High	Aves-Eupodotis senegalensis
High	Aves-Sagittarius serpentarius
Medium	Aves-Tyto capensis
Medium	Insecta-Lepidochrysops procera
Medium	Mammalia-Hydrictris maculicollis

MAP OF RELATIVE AQUATIC BIODIVERSITY THEME SENSITIVITY

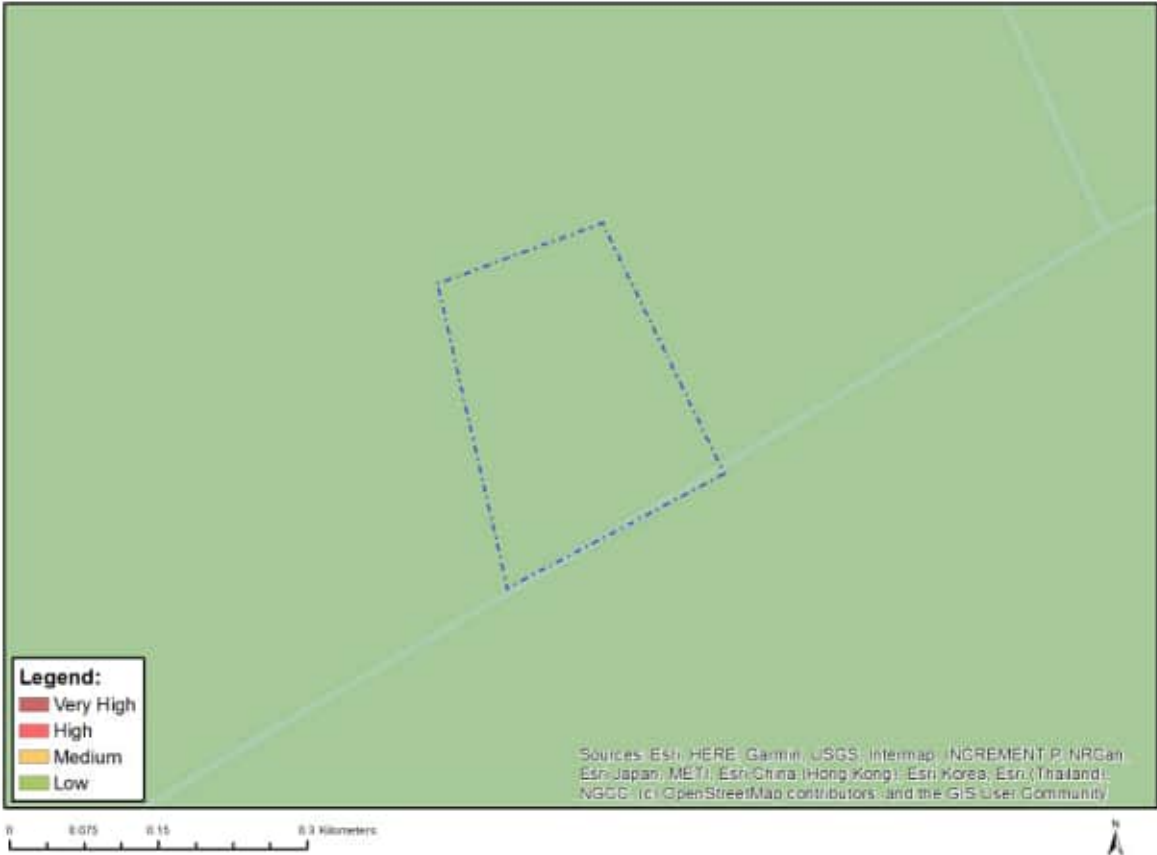


Very High sensitivity	High sensitivity	Medium sensitivity	Low sensitivity
			X

Sensitivity Features:

Sensitivity	Feature(s)
Low	Low sensitivity

MAP OF RELATIVE ARCHAEOLOGICAL AND CULTURAL HERITAGE THEME SENSITIVITY

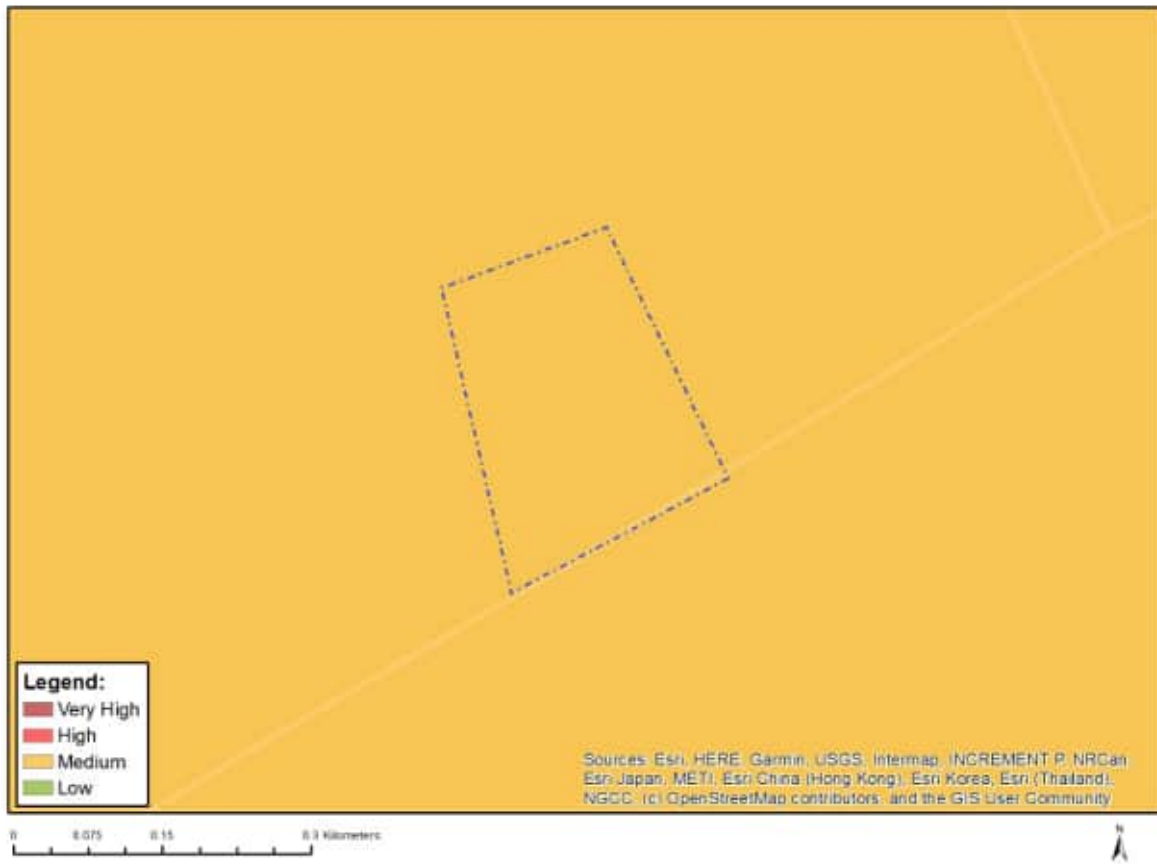


Very High sensitivity	High sensitivity	Medium sensitivity	Low sensitivity
			X

Sensitivity Features:

Sensitivity	Feature(s)
Low	Low sensitivity

MAP OF RELATIVE CIVIL AVIATION THEME SENSITIVITY

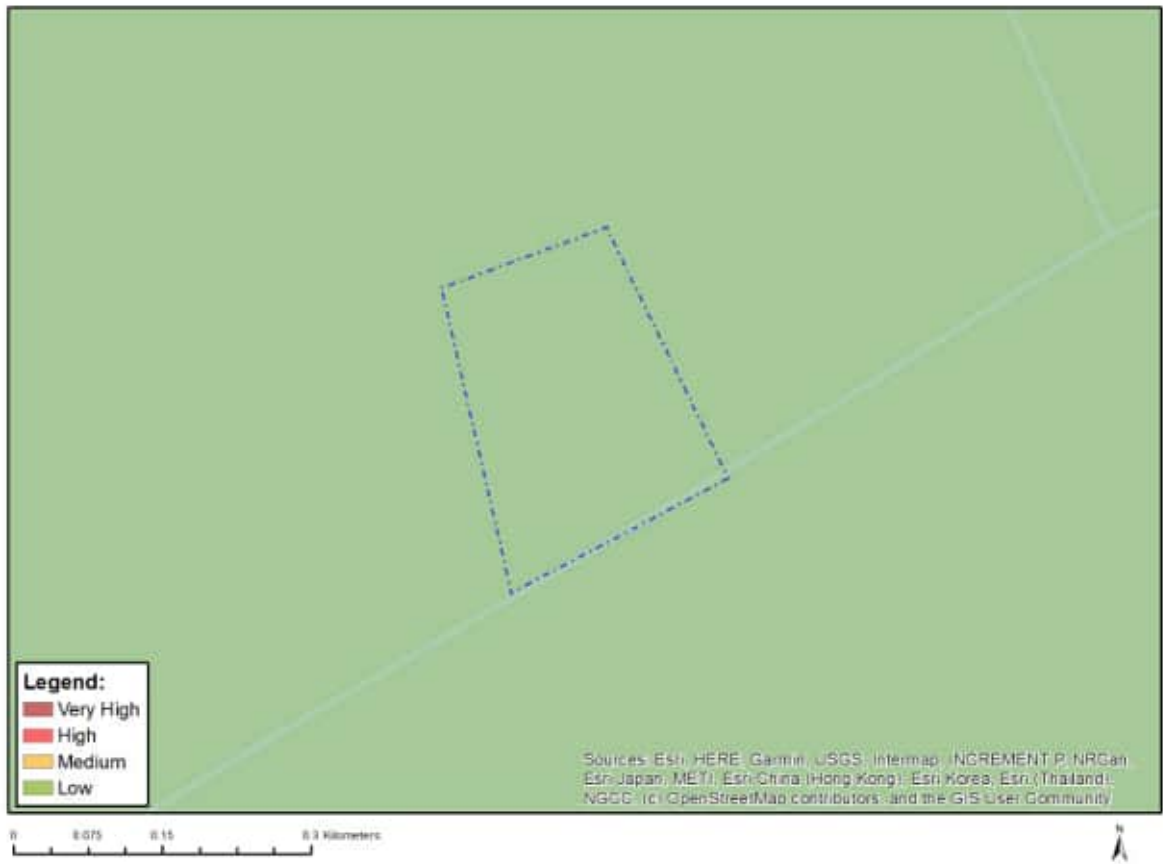


Very High sensitivity	High sensitivity	Medium sensitivity	Low sensitivity
		X	

Sensitivity Features:

Sensitivity	Feature(s)
Medium	Within 5 km of an air traffic control or navigation site

MAP OF RELATIVE DEFENCE THEME SENSITIVITY

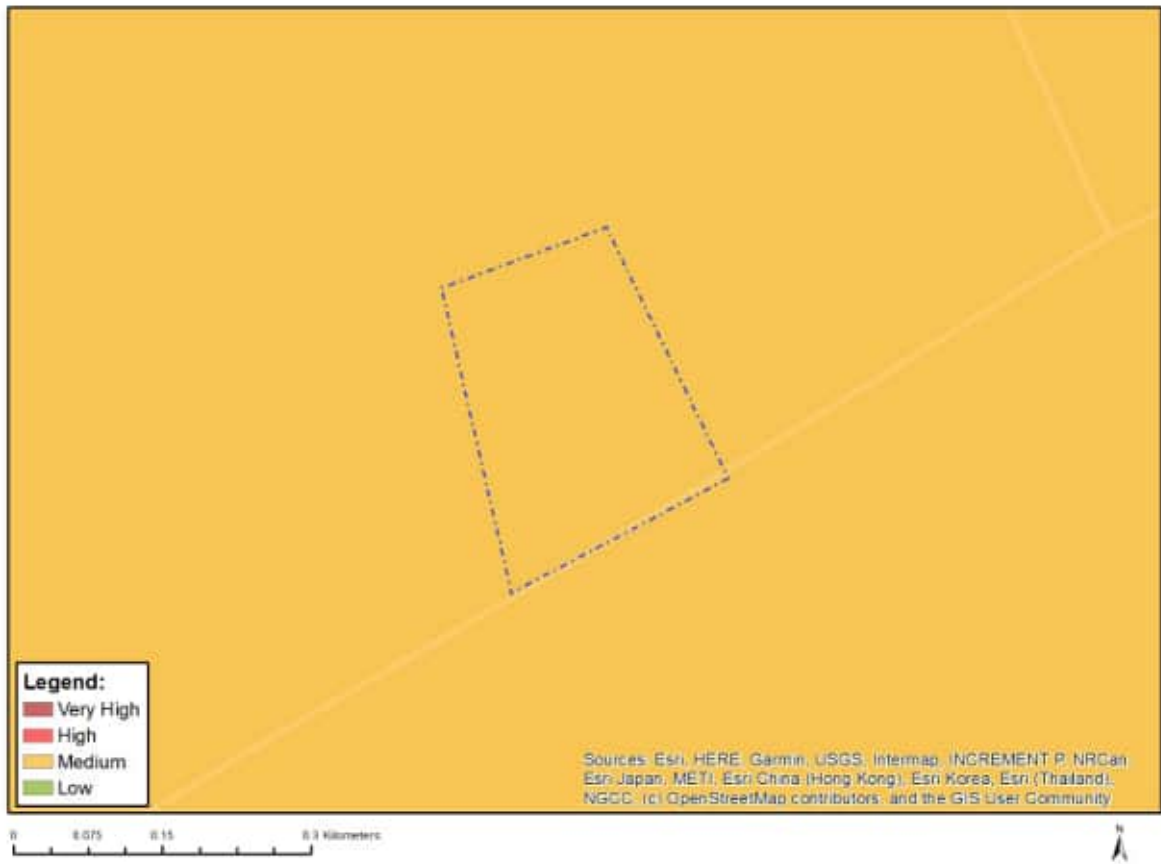


Very High sensitivity	High sensitivity	Medium sensitivity	Low sensitivity
			X

Sensitivity Features:

Sensitivity	Feature(s)
Low	Low Sensitivity

MAP OF RELATIVE PALEONTOLOGY THEME SENSITIVITY



Very High sensitivity	High sensitivity	Medium sensitivity	Low sensitivity
		X	

Sensitivity Features:

Sensitivity	Feature(s)
Medium	Features with a Medium paleontological sensitivity

MAP OF RELATIVE PLANT SPECIES THEME SENSITIVITY



Where only a sensitive plant unique number or sensitive animal unique number is provided in the screening report and an assessment is required, the environmental assessment practitioner (EAP) or specialist is required to email SANBI at eiadatarequests@sanbi.org.za listing all sensitive species with their unique identifiers for which information is required. The name has been withheld as the species may be prone to illegal harvesting and must be protected. SANBI will release the actual species name after the details of the EAP or specialist have been documented.

Very High sensitivity	High sensitivity	Medium sensitivity	Low sensitivity
		X	

Sensitivity Features:

Sensitivity	Feature(s)
Low	Low Sensitivity
Medium	Sensitive species 1252
Medium	Khadia beswickii
Medium	Sensitive species 691

MAP OF RELATIVE TERRESTRIAL BIODIVERSITY THEME SENSITIVITY



Very High sensitivity	High sensitivity	Medium sensitivity	Low sensitivity
X			

Sensitivity Features:

Sensitivity	Feature(s)
Very High	Critical biodiversity area 1
Very High	Protected Areas Expansion Strategy
Very High	Vulnerable ecosystem

**SCREENING REPORT FOR AN ENVIRONMENTAL AUTHORIZATION AS
REQUIRED BY THE 2014 EIA REGULATIONS – PROPOSED SITE
ENVIRONMENTAL SENSITIVITY**

EIA Reference number:

Project name: Secunda Impumelelo

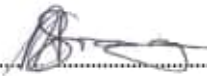
Project title: Substation - Option 2

Date screening report generated: 07/02/2023 08:13:35

Applicant: Enertrag

Compiler: WSP Group Africa (Pty) Ltd

Compiler signature:

.....

Application Category: Utilities Infrastructure | Electricity | Distribution and
Transmission | Substation

Table of Contents

- Proposed Project Location 3
 - Orientation map 1: General location 3
- Map of proposed site and relevant area(s) 4
 - Cadastral details of the proposed site 4
 - Wind and Solar developments with an approved Environmental Authorisation or applications under consideration within 30 km of the proposed area 4
 - Environmental Management Frameworks relevant to the application 4
- Environmental screening results and assessment outcomes 5
 - Relevant development incentives, restrictions, exclusions or prohibitions 5
- Map indicating proposed development footprint within applicable development incentive, restriction, exclusion or prohibition zones 6
 - Proposed Development Area Environmental Sensitivity 6
 - Specialist assessments identified 7
- Results of the environmental sensitivity of the proposed area 9
 - MAP OF RELATIVE AGRICULTURE THEME SENSITIVITY 9
 - MAP OF RELATIVE ANIMAL SPECIES THEME SENSITIVITY 10
 - MAP OF RELATIVE AQUATIC BIODIVERSITY THEME SENSITIVITY 11
 - MAP OF RELATIVE ARCHAEOLOGICAL AND CULTURAL HERITAGE THEME SENSITIVITY 12
 - MAP OF RELATIVE CIVIL AVIATION THEME SENSITIVITY 13
 - MAP OF RELATIVE DEFENCE THEME SENSITIVITY 14
 - MAP OF RELATIVE PALEONTOLOGY THEME SENSITIVITY 15
 - MAP OF RELATIVE PLANT SPECIES THEME SENSITIVITY 16
 - MAP OF RELATIVE TERRESTRIAL BIODIVERSITY THEME SENSITIVITY 17

Proposed Project Location

Orientation map 1: General location



Map of proposed site and relevant area(s)



Cadastral details of the proposed site

Property details:

No	Farm Name	Farm/ Erf No	Portion	Latitude	Longitude	Property Type
1	MAHEMSFONTEIN	544	0	26°41'10.65S	28°50'22.65E	Farm
2	MAHEMSFONTEIN	544	0	26°40'36.18S	28°50'44.76E	Farm Portion

Development footprint¹ vertices:
No development footprint(s) specified.

Wind and Solar developments with an approved Environmental Authorisation or applications under consideration within 30 km of the proposed area

No nearby wind or solar developments found.

Environmental Management Frameworks relevant to the application

No intersections with EMF areas found.

¹ "development footprint", means the area within the site on which the development will take place and includes all ancillary developments for example roads, power lines, boundary walls, paving etc. which require vegetation clearance or which will be disturbed and for which the application has been submitted.

Environmental screening results and assessment outcomes

The following sections contain a summary of any development incentives, restrictions, exclusions or prohibitions that apply to the proposed development site as well as the most environmental sensitive features on the site based on the site sensitivity screening results for the application classification that was selected. The application classification selected for this report is: **Utilities Infrastructure | Electricity | Distribution and Transmission | Substation.**

Relevant development incentives, restrictions, exclusions or prohibitions

The following development incentives, restrictions, exclusions or prohibitions and their implications that apply to this site are indicated below.

Incentive, restriction or prohibition	Implication
Air Quality-Highveld Priority Area	https://screening.environment.gov.za/ScreeningDownloads/DevelopmentZones/HIGHVELD_PRIORITY_AREA_AQMP.pdf
Strategic Gas Pipeline Corridors -Phase 8: Rompco Pipeline Corridor	https://screening.environment.gov.za/ScreeningDownloads/DevelopmentZones/Combined_GAS.pdf

Map indicating proposed development footprint within applicable development incentive, restriction, exclusion or prohibition zones



Proposed Development Area Environmental Sensitivity

The following summary of the development site environmental sensitivities is identified. Only the highest environmental sensitivity is indicated. The footprint environmental sensitivities for the proposed development footprint as identified, are indicative only and must be verified on site by a suitably qualified person before the specialist assessments identified below can be confirmed.

Theme	Very High sensitivity	High sensitivity	Medium sensitivity	Low sensitivity
Agriculture Theme			X	
Animal Species Theme		X		

Aquatic Biodiversity Theme				X
Archaeological and Cultural Heritage Theme				X
Civil Aviation Theme			X	
Defence Theme				X
Paleontology Theme			X	
Plant Species Theme			X	
Terrestrial Biodiversity Theme	X			

Specialist assessments identified

Based on the selected classification, and the environmental sensitivities of the proposed development footprint, the following list of specialist assessments have been identified for inclusion in the assessment report. It is the responsibility of the EAP to confirm this list and to motivate in the assessment report, the reason for not including any of the identified specialist study including the provision of photographic evidence of the site situation.

N o	Specialist assessment	Assessment Protocol
1	Agricultural Impact Assessment	https://screening.environment.gov.za/ScreeningDownloads/AssessmentProtocols/Gazetted General Agriculture Assessment Protocols.pdf
2	Archaeological and Cultural Heritage Impact Assessment	https://screening.environment.gov.za/ScreeningDownloads/AssessmentProtocols/Gazetted General Requirement Assessment Protocols.pdf
3	Palaeontology Impact Assessment	https://screening.environment.gov.za/ScreeningDownloads/AssessmentProtocols/Gazetted General Requirement Assessment Protocols.pdf
4	Terrestrial Biodiversity Impact Assessment	https://screening.environment.gov.za/ScreeningDownloads/AssessmentProtocols/Gazetted Terrestrial Biodiversity Assessment Protocols.pdf
5	Aquatic Biodiversity Impact Assessment	https://screening.environment.gov.za/ScreeningDownloads/AssessmentProtocols/Gazetted Aquatic Biodiversity Assessment Protocols.pdf
6	Geotechnical Assess	https://screening.environment.gov.za/ScreeningDownloads/AssessmentProtocols/Gazetted General Requirement Assessment Protocols.pdf

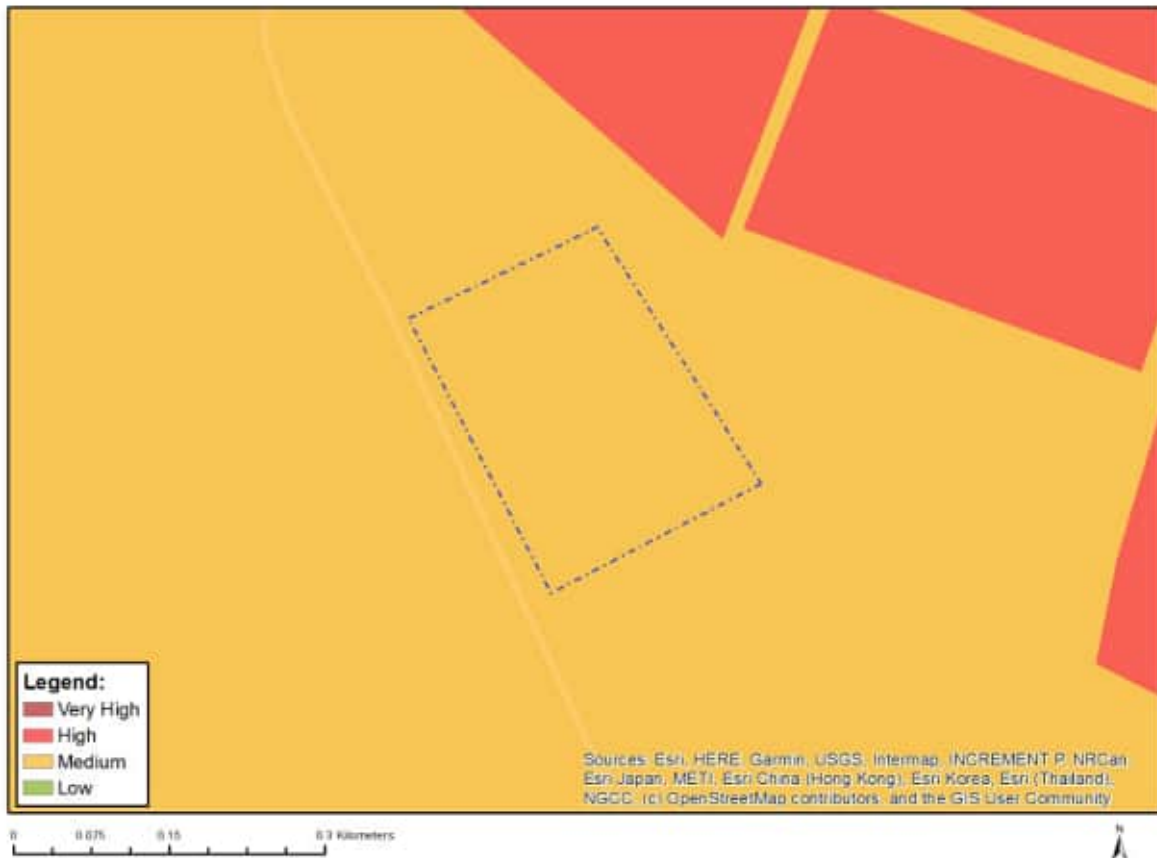
	ment	
7	Plant Species Assessment	https://screening.environment.gov.za/ScreeningDownloads/AssessmentProtocols/Gazetted Plant Species Assessment Protocols.pdf
8	Animal Species Assessment	https://screening.environment.gov.za/ScreeningDownloads/AssessmentProtocols/Gazetted Animal Species Assessment Protocols.pdf

OFFICIAL

Results of the environmental sensitivity of the proposed area.

The following section represents the results of the screening for environmental sensitivity of the proposed site for relevant environmental themes associated with the project classification. It is the duty of the EAP to ensure that the environmental themes provided by the screening tool are comprehensive and complete for the project. Refer to the disclaimer.

MAP OF RELATIVE AGRICULTURE THEME SENSITIVITY



Very High sensitivity	High sensitivity	Medium sensitivity	Low sensitivity
		X	

Sensitivity Features:

Sensitivity	Feature(s)
Medium	Land capability;06. Low-Moderate/07. Low-Moderate/08. Moderate

MAP OF RELATIVE AQUATIC BIODIVERSITY THEME SENSITIVITY



Very High sensitivity	High sensitivity	Medium sensitivity	Low sensitivity
			X

Sensitivity Features:

Sensitivity	Feature(s)
Low	Low sensitivity

MAP OF RELATIVE ARCHAEOLOGICAL AND CULTURAL HERITAGE THEME SENSITIVITY

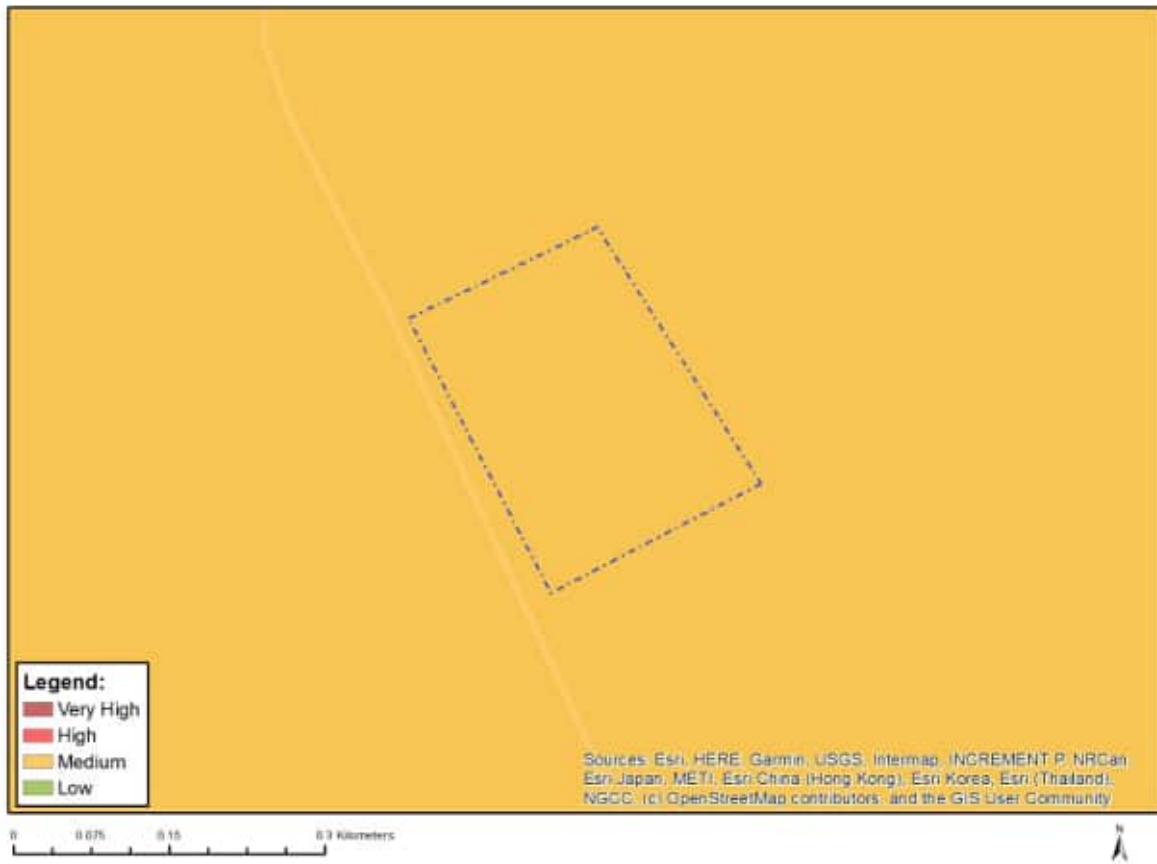


Very High sensitivity	High sensitivity	Medium sensitivity	Low sensitivity
			X

Sensitivity Features:

Sensitivity	Feature(s)
Low	Low sensitivity

MAP OF RELATIVE CIVIL AVIATION THEME SENSITIVITY



Very High sensitivity	High sensitivity	Medium sensitivity	Low sensitivity
		X	

Sensitivity Features:

Sensitivity	Feature(s)
Medium	Within 5 km of an air traffic control or navigation site

MAP OF RELATIVE DEFENCE THEME SENSITIVITY

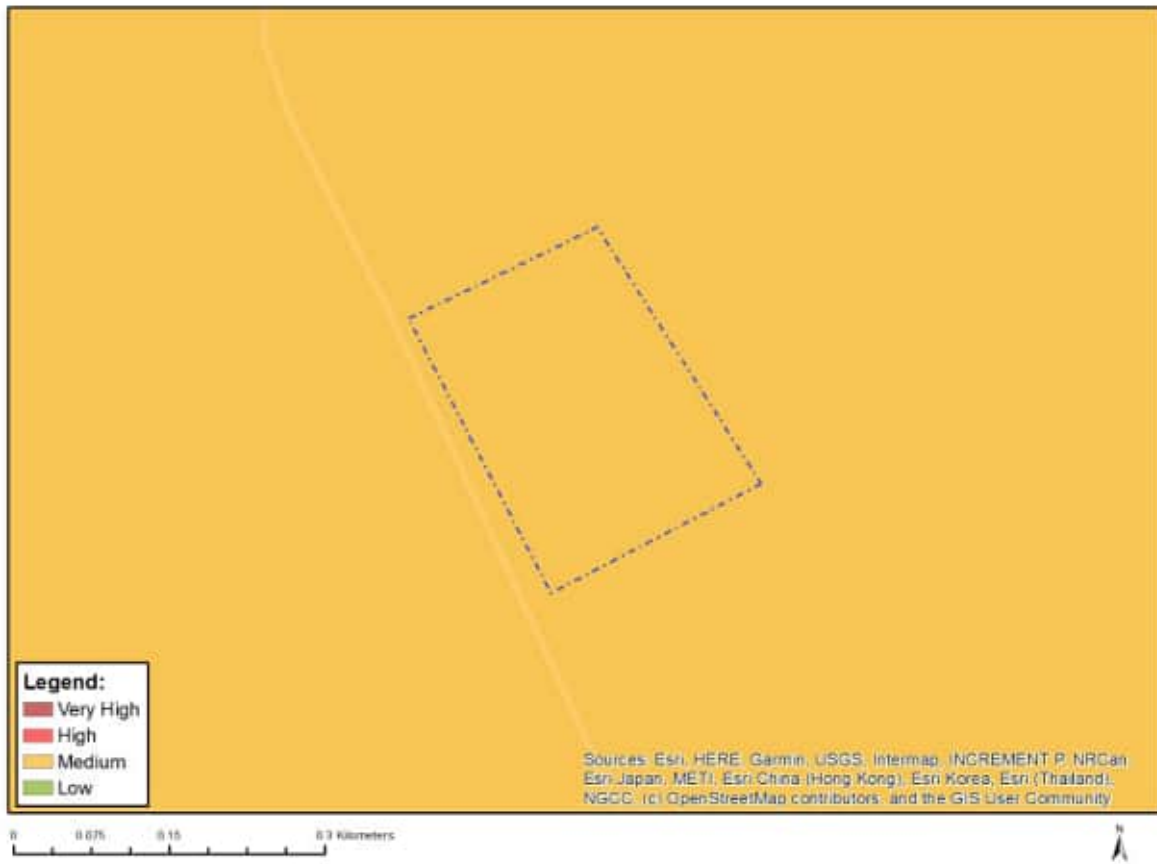


Very High sensitivity	High sensitivity	Medium sensitivity	Low sensitivity
			X

Sensitivity Features:

Sensitivity	Feature(s)
Low	Low Sensitivity

MAP OF RELATIVE PALEONTOLOGY THEME SENSITIVITY



Very High sensitivity	High sensitivity	Medium sensitivity	Low sensitivity
		X	

Sensitivity Features:

Sensitivity	Feature(s)
Medium	Features with a Medium paleontological sensitivity

MAP OF RELATIVE PLANT SPECIES THEME SENSITIVITY



Where only a sensitive plant unique number or sensitive animal unique number is provided in the screening report and an assessment is required, the environmental assessment practitioner (EAP) or specialist is required to email SANBI at eiadatarequests@sanbi.org.za listing all sensitive species with their unique identifiers for which information is required. The name has been withheld as the species may be prone to illegal harvesting and must be protected. SANBI will release the actual species name after the details of the EAP or specialist have been documented.

Very High sensitivity	High sensitivity	Medium sensitivity	Low sensitivity
		X	

Sensitivity Features:

Sensitivity	Feature(s)
Low	Low Sensitivity
Medium	Sensitive species 1252
Medium	Khadia beswickii
Medium	Sensitive species 691

MAP OF RELATIVE TERRESTRIAL BIODIVERSITY THEME SENSITIVITY



Very High sensitivity	High sensitivity	Medium sensitivity	Low sensitivity
X			

Sensitivity Features:

Sensitivity	Feature(s)
Very High	Critical biodiversity area 1
Very High	Critical biodiversity area 2
Very High	Protected Areas Expansion Strategy
Very High	Vulnerable ecosystem