

Figure 1: Locality map showing the 500m assessment zone and the BESS therein, surrounding the Gunstfontein Substation proposed for the development of the BESS and associated infrastructure for the authorised Gunstfontein Wind Energy Facility.

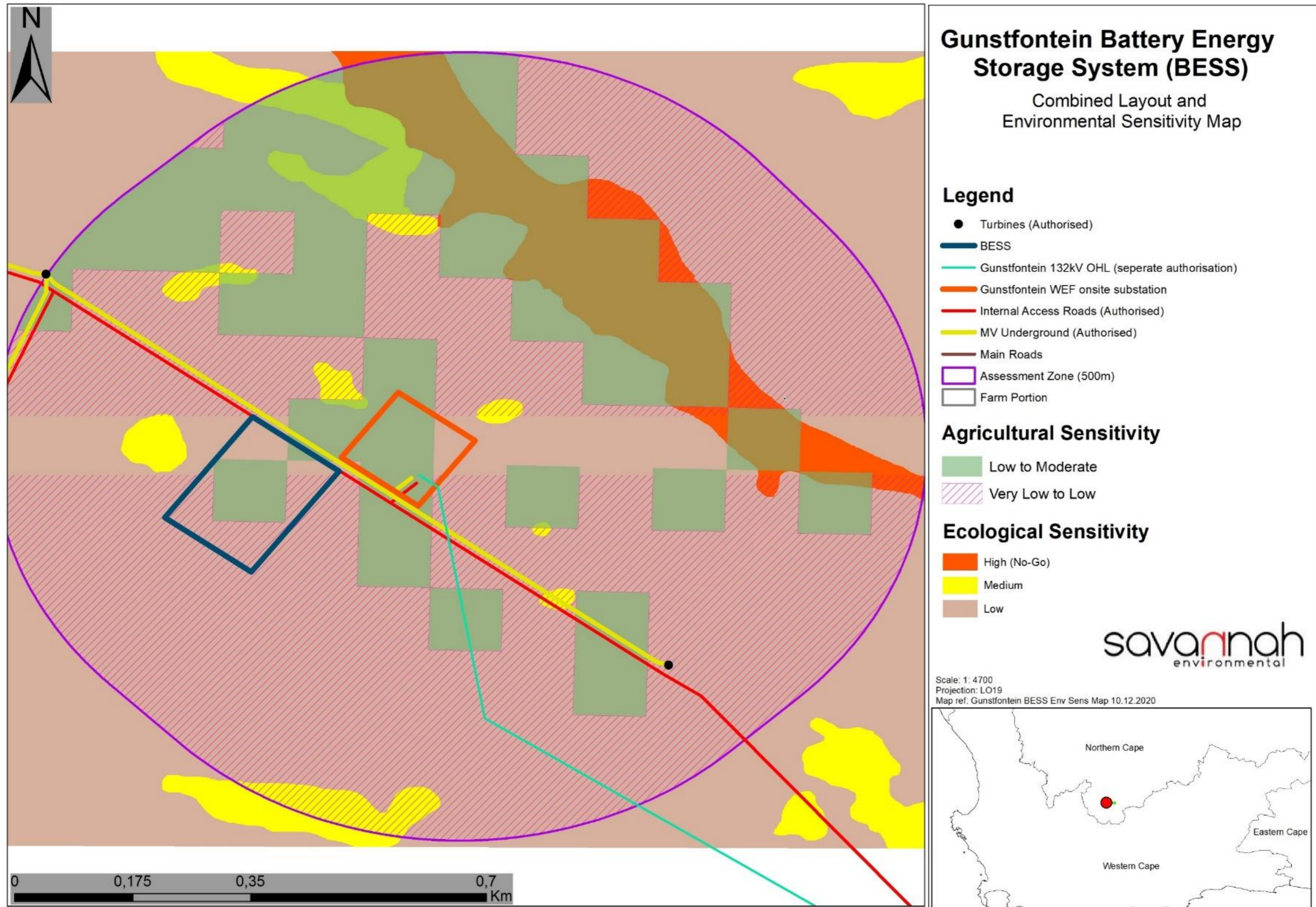


Figure 2: Environmental sensitivity map for the BESS 500m Assessment Zone surrounding the Gunstfontein Substation.

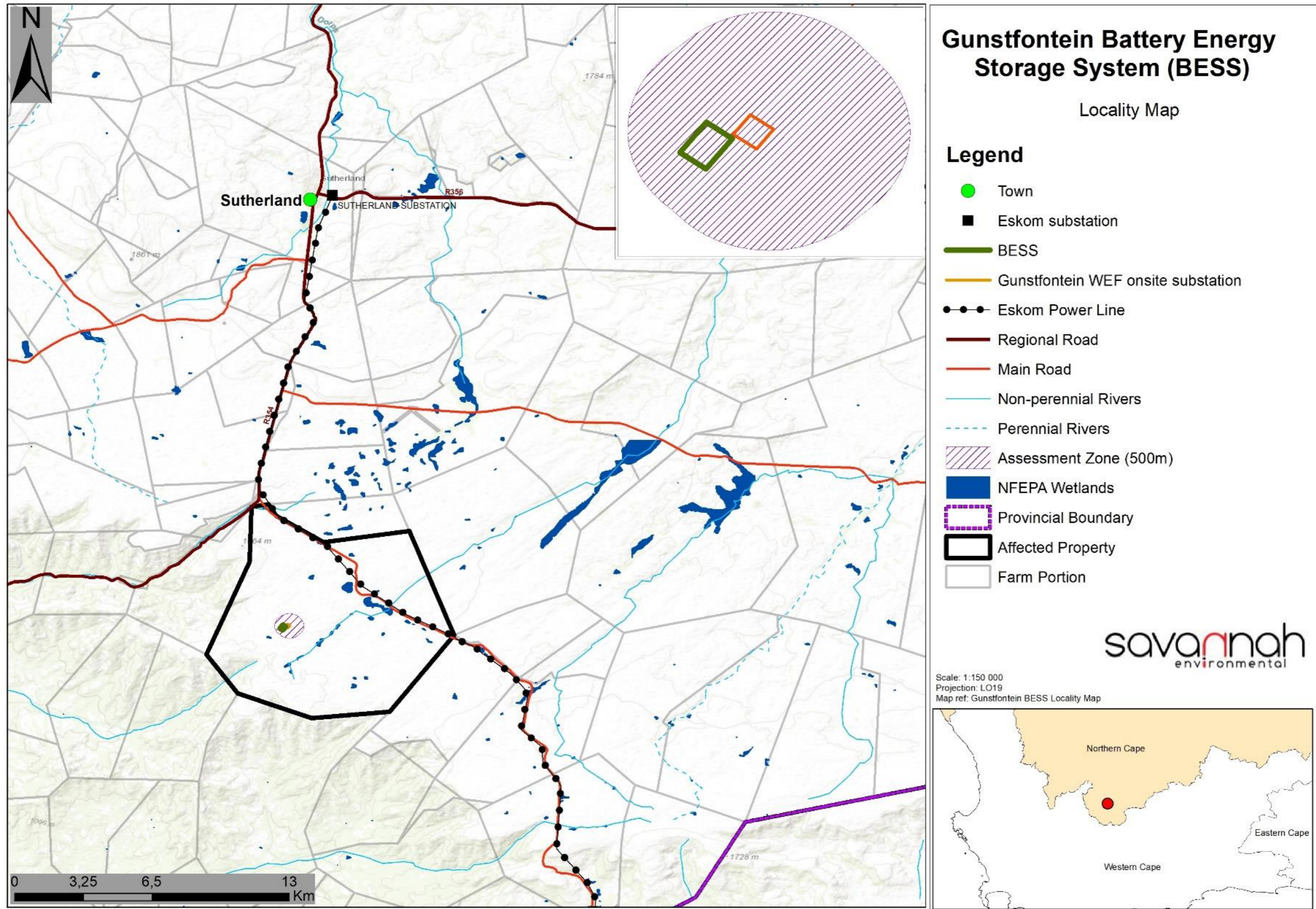


Figure 1.1: Locality map showing the location of the BESS within the 500m assessment zone for the authorised Gunstfontein Energy Facility (refer to Appendix I for A3 map).

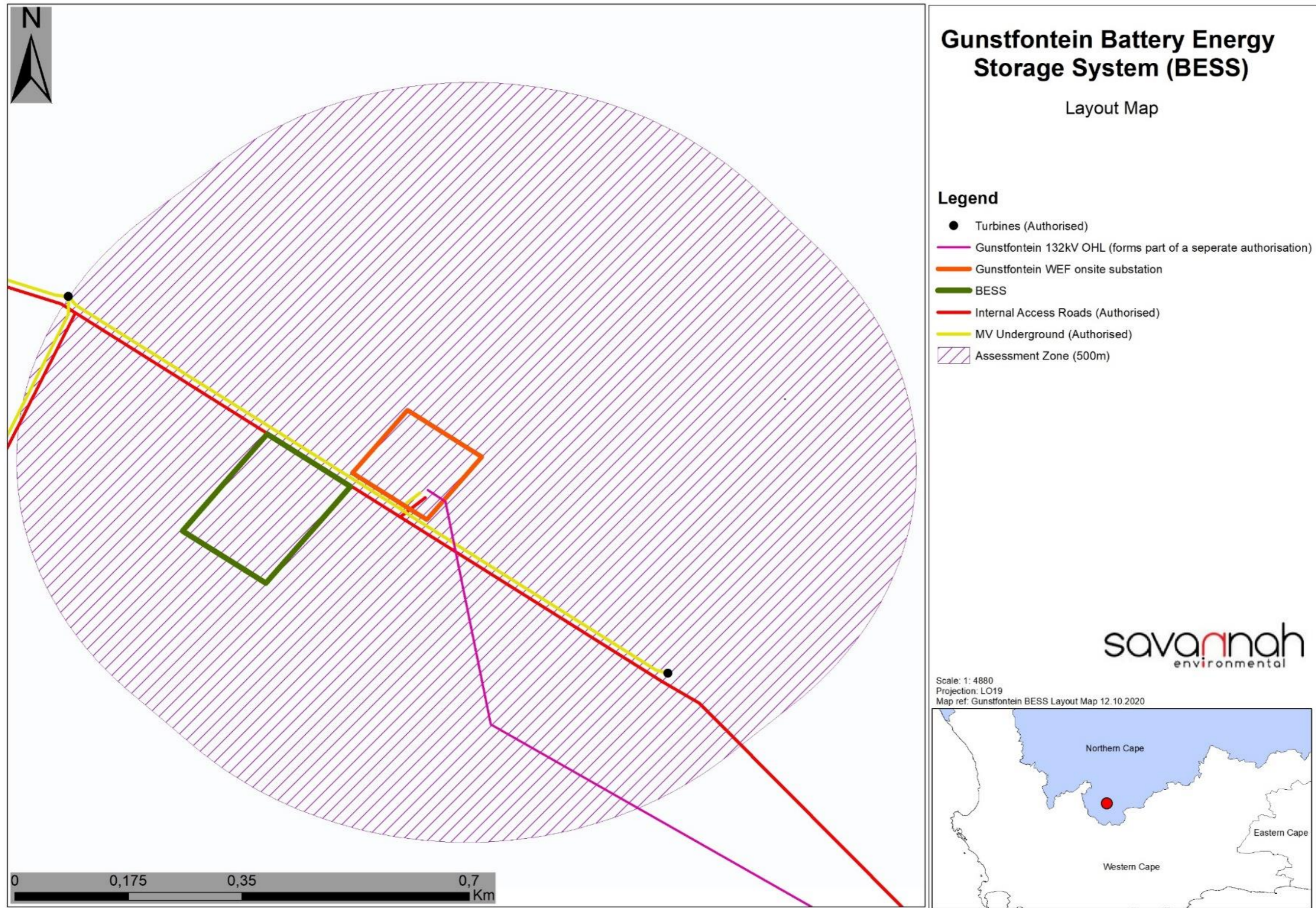


Figure 2.1: Layout Map for Gunstfontein BESS and associated Infrastructure for the Gunstfontein Wind Energy Facility (refer to Appendix I for A3 map), showing the location of the BESS within the assessment zone.

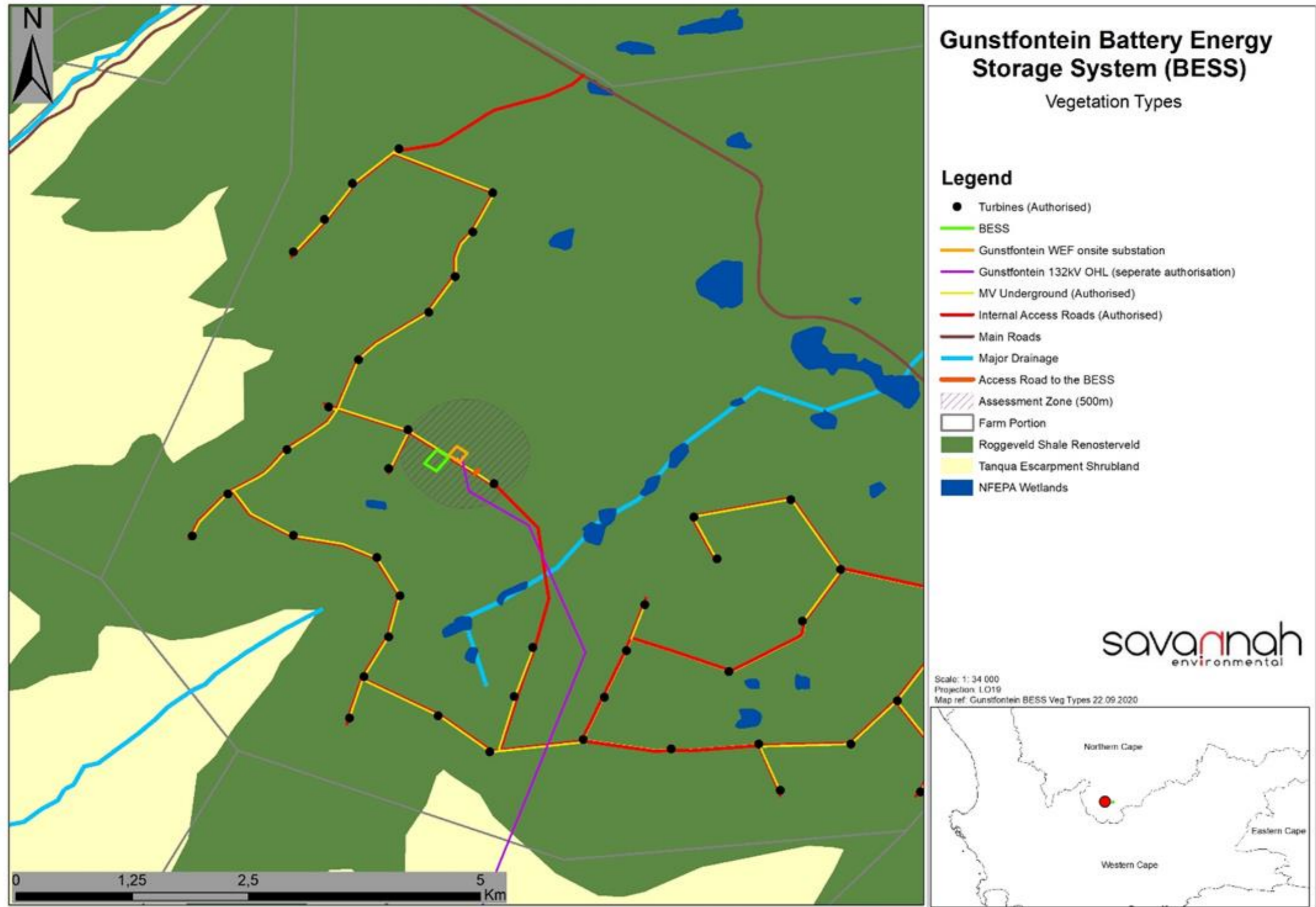


Figure 5.3: Broad-scale overview of the vegetation in and around the Gunstfontein substation and BESS study area. The vegetation map is an extract of the national vegetation map (Mucina & Rutherford 2006 & 2018 update) and also includes drainage lines delineated by the NFEPA assessment (Nel et al. 2011).

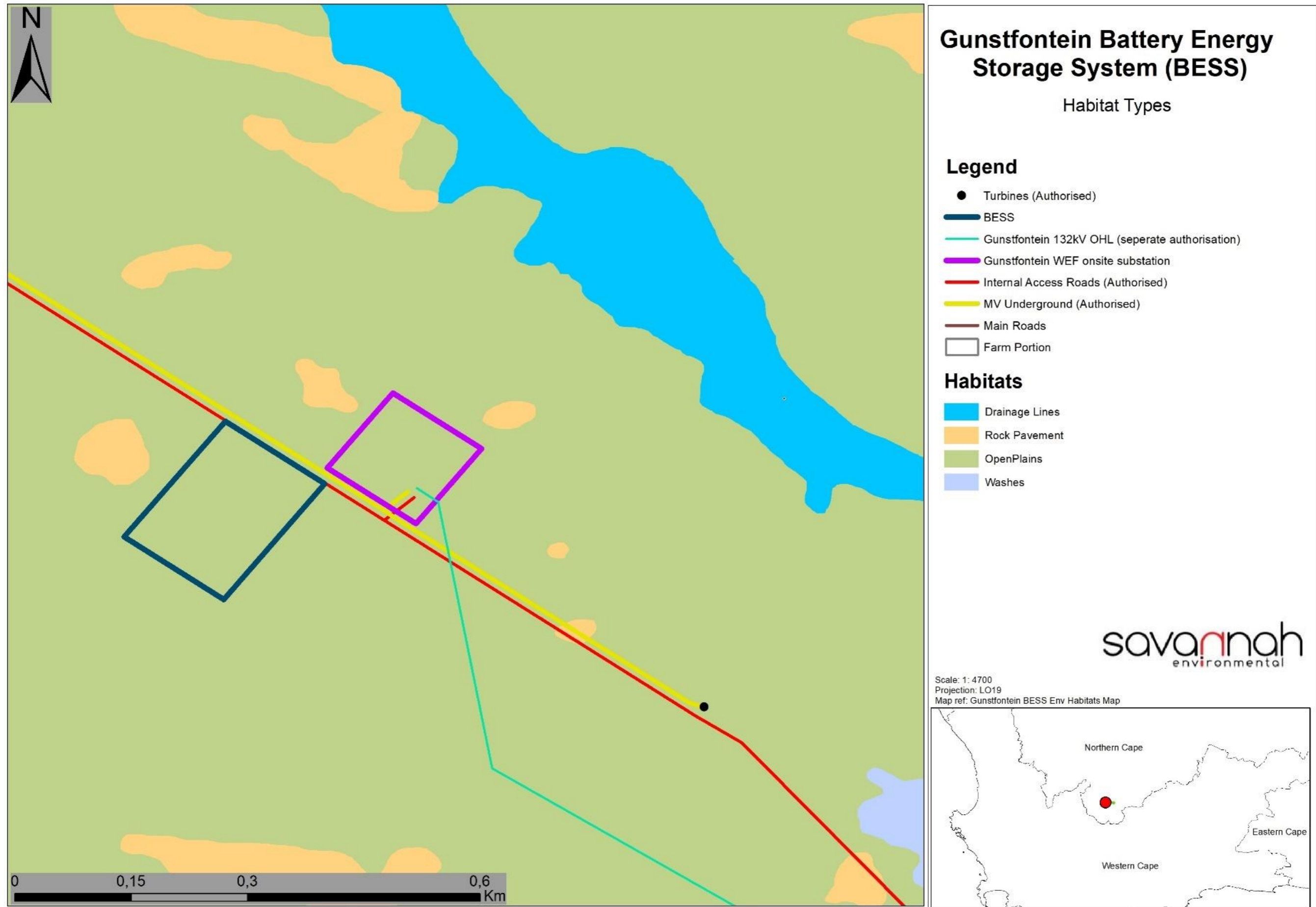


Figure 5.4: Ecological habitats observed within the Gunstfontein BESS 500m assessment region (entire frame) and which are described in detail below

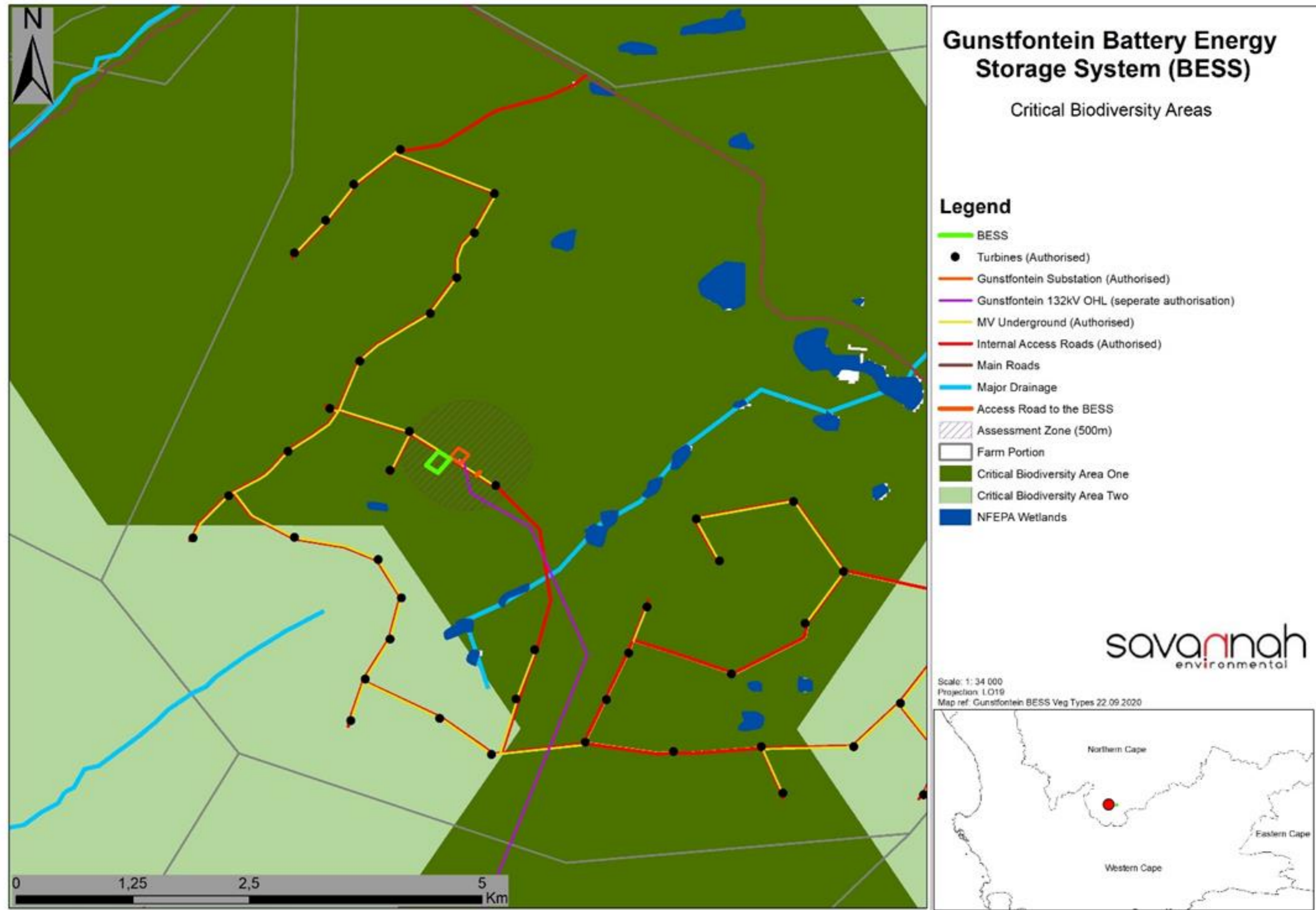


Figure 5.9: Extract of the Northern Cape Critical Biodiversity Areas map for the broader study area around the Gunstfontein BESS, showing that the BESS occurs within an area classified as CBA 1.

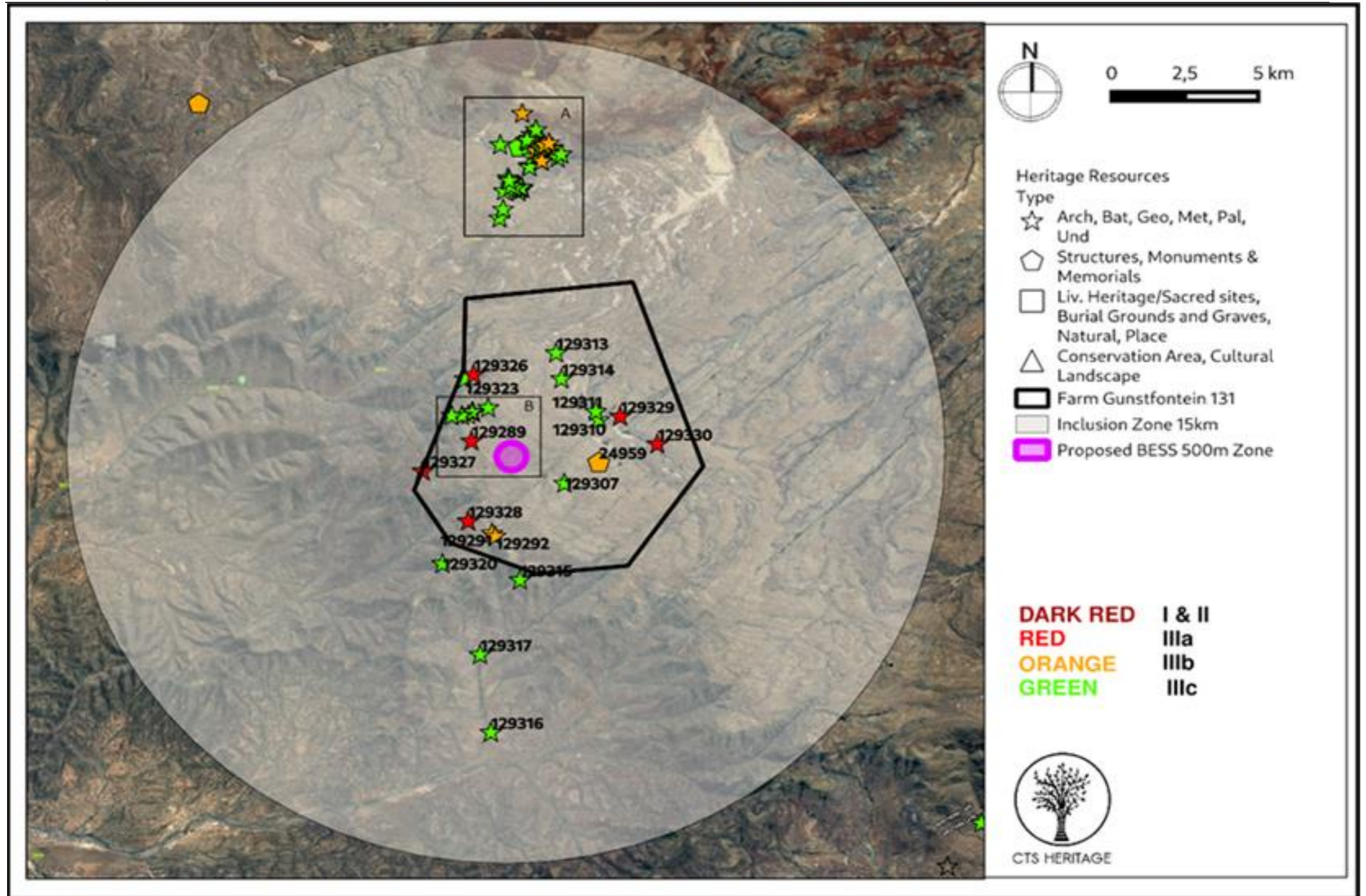


Figure 5.10: Previous HIAs Map. Previous Heritage Impact Assessments covering the proposed development area with SAHRIS NIDS indicated.

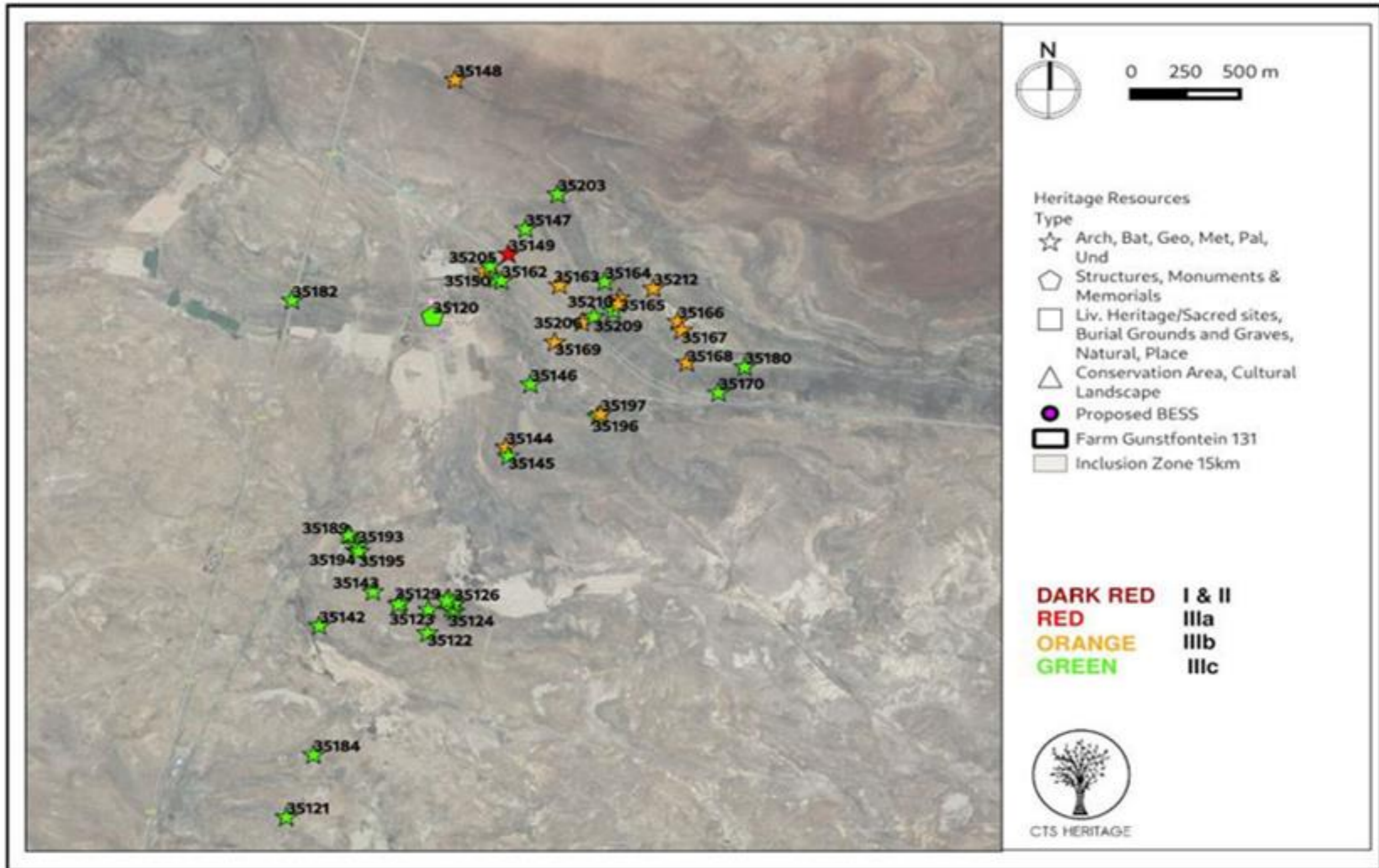


Figure 5.11: Heritage Resources Map Inset A.

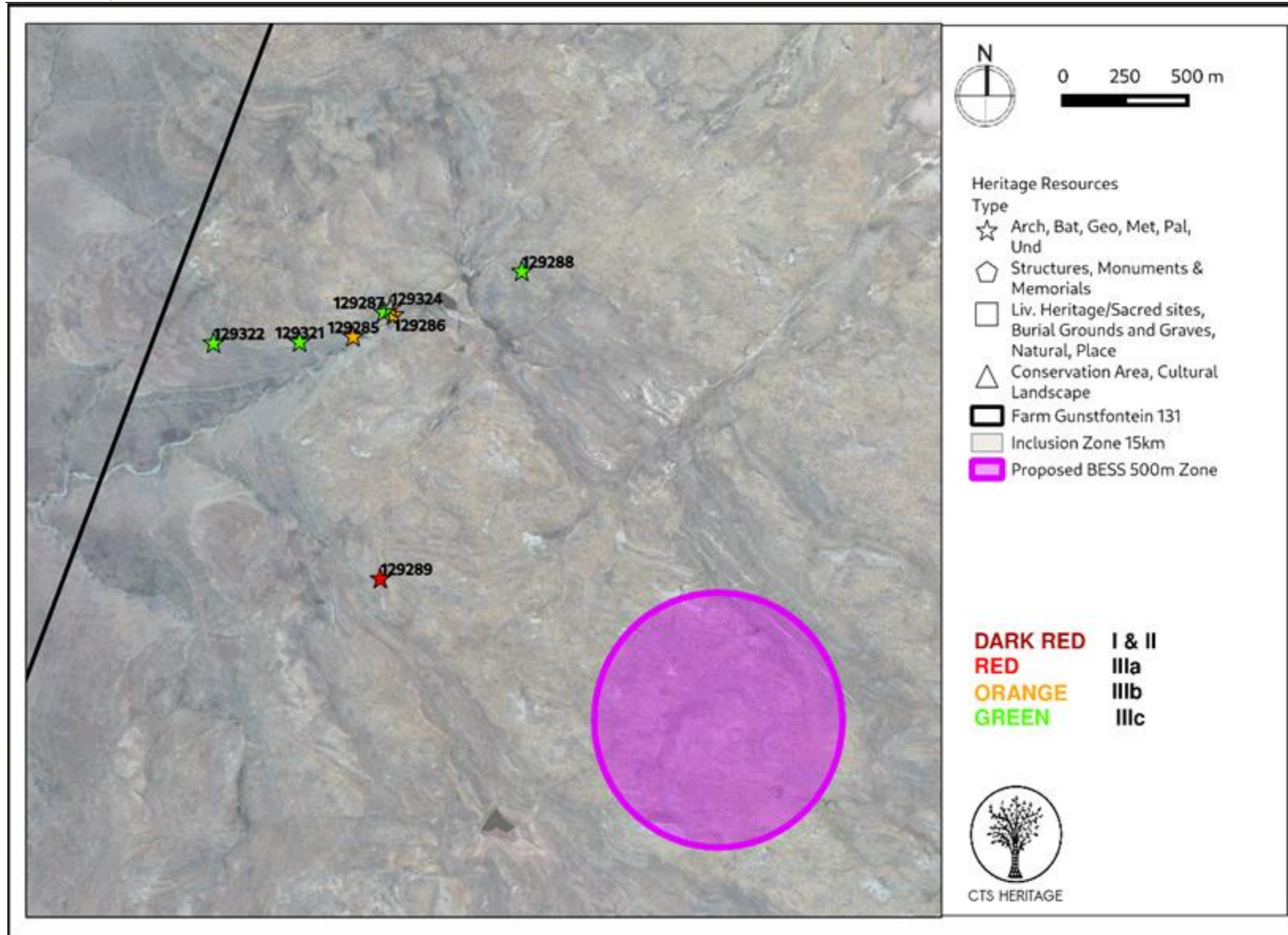


Figure 5.12: Heritage Resources Map Inset B indicating known sites in relation to the approved WEF layout and proposed BESS.

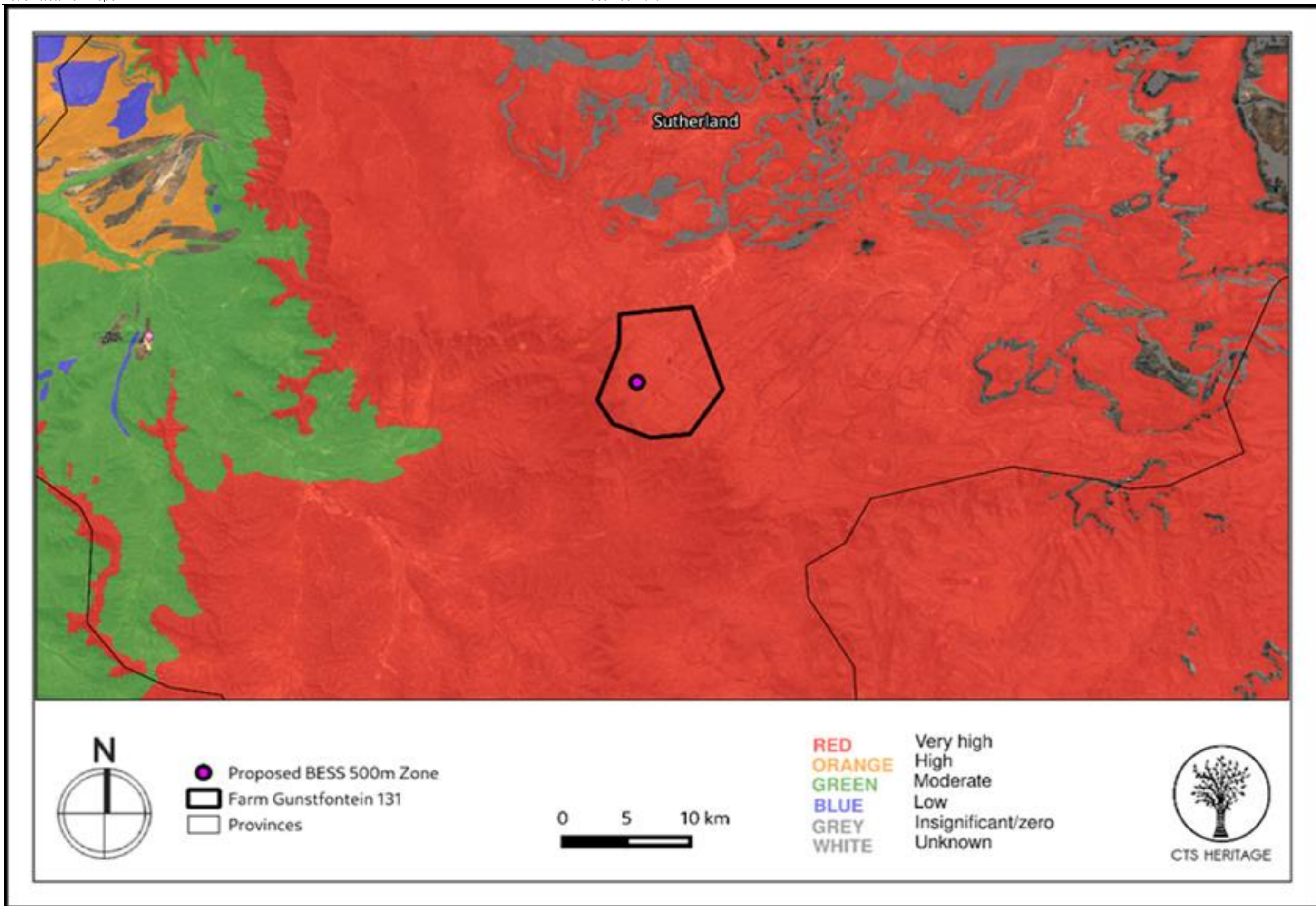
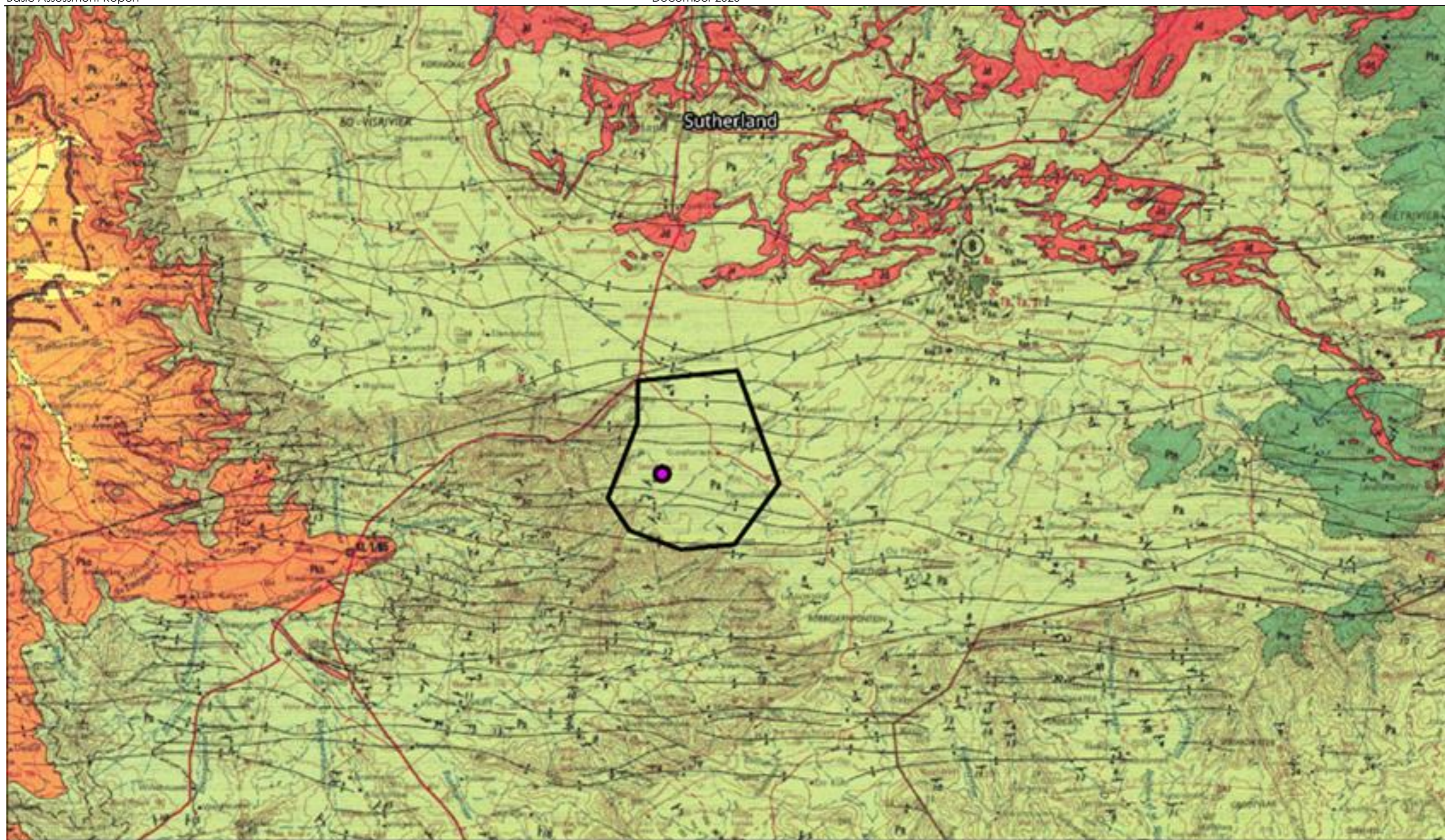


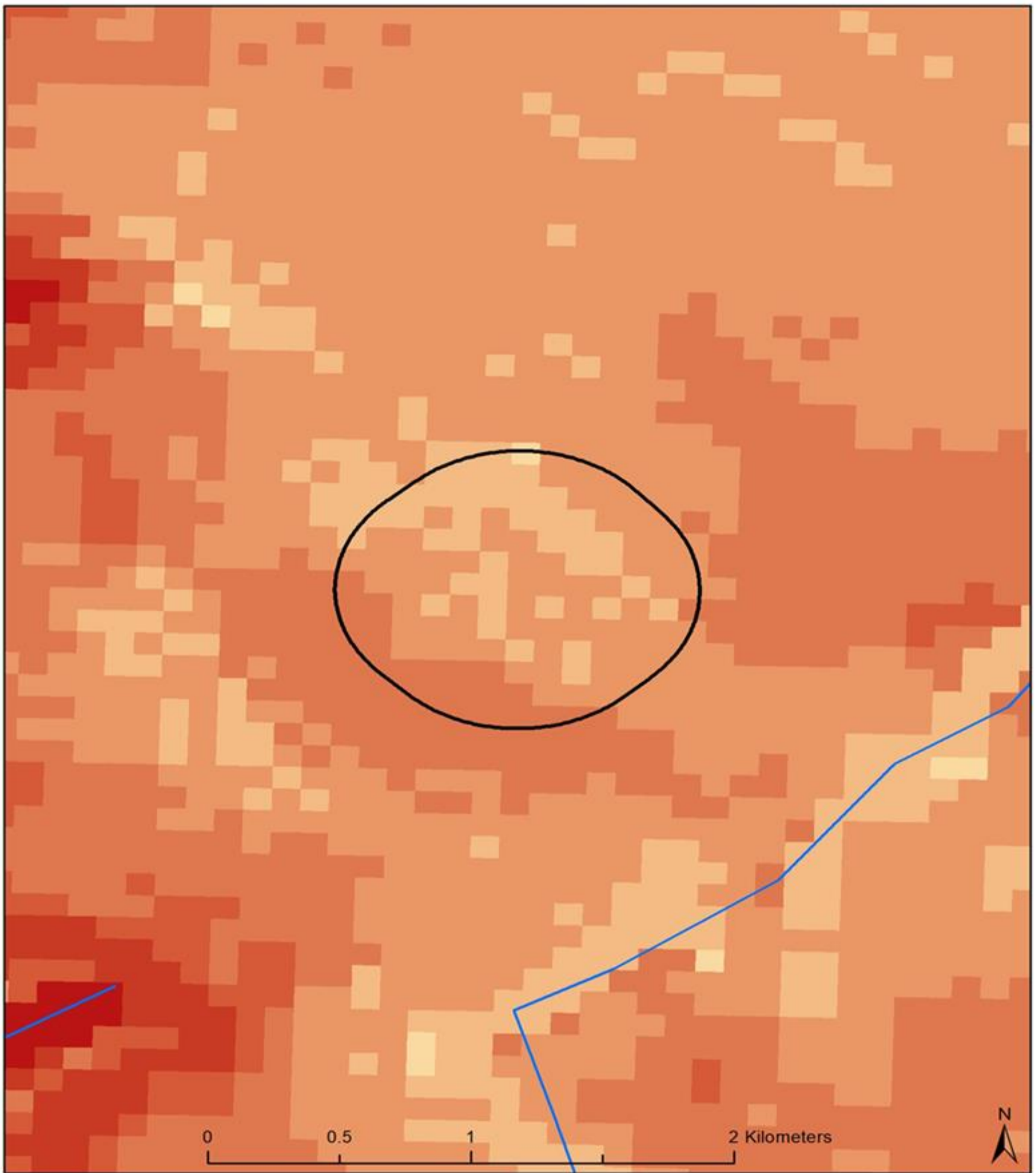
Figure 5.13: Palaeosensitivity Map. Indicating fossil sensitivity underlying the study area. Please See Appendix 3 of the Heritage Impact Assessment for a full guide to the legend.



- Proposed BESS 500m Zone
- Farm Gunstfontein 131



Figure 5.14: Geology Map. Extract from the CGS 3220 Sutherland Map indicating that the development area is underlain by sediments of the Karoo Supergroup assigned to the Beaufort group, within the Abrahamskraal Formation of the Adelaide Subgroup (Pa).



Legend

Land capability (DAFF)

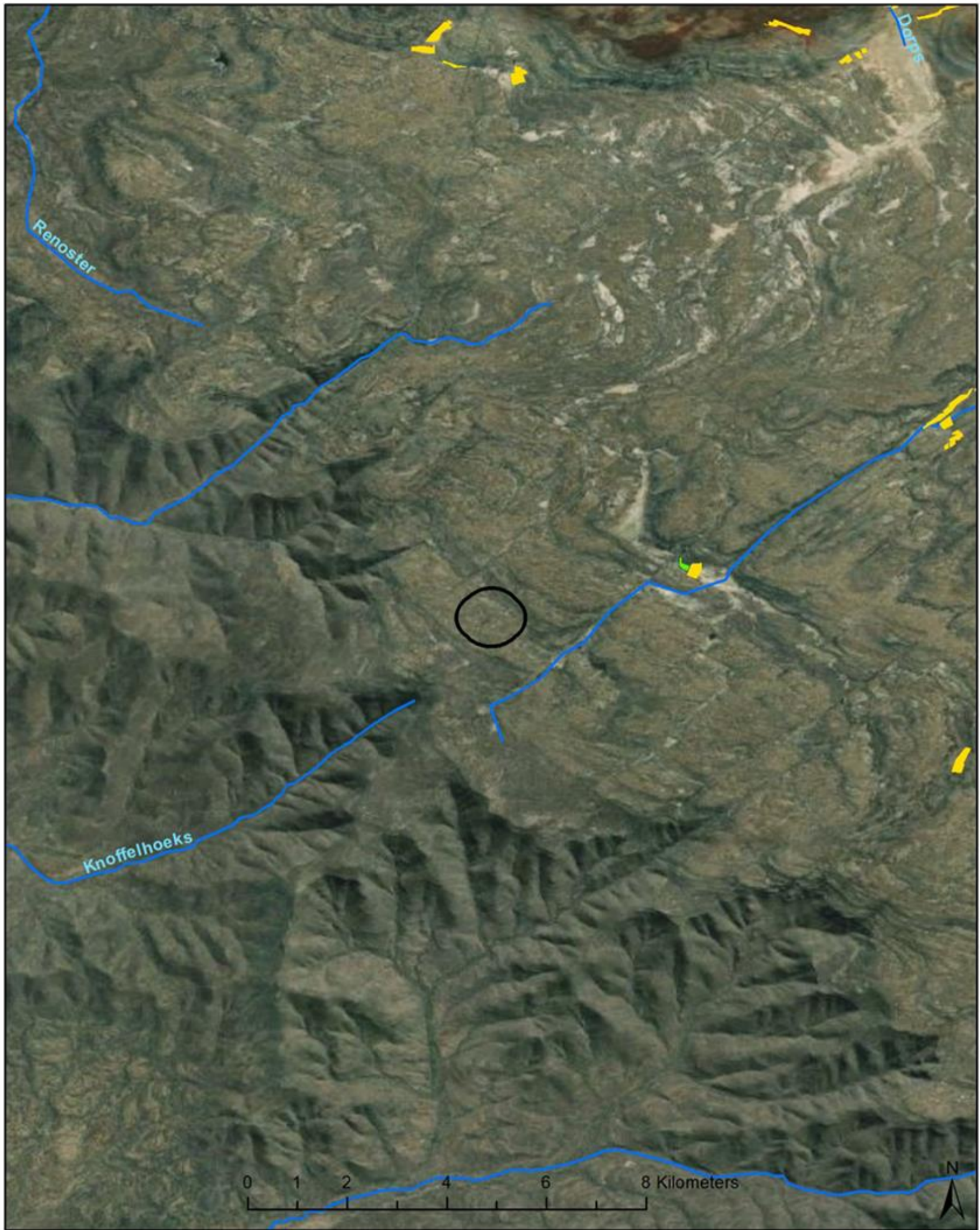
- 01. Very low
- 02. Very low
- 03. Low-Very low

- 04. Low-Very low
- 05. Low
- 06. Low-Moderate
- 07. Low-Moderate

- Project assessment zone (103.9 ha)
- Rivers



Figure 5.15: Land capability classification of the Gunstfontein BESS project assessment zone and surrounding area (data source: DEFF, 2017) (As a result of the projection/CRS used to create this map, the assessment zone may appear different to the other maps)



Legend

Field crops

-  Horticulture
-  Rainfed Annual Crop Cultivation / Planted Pastures



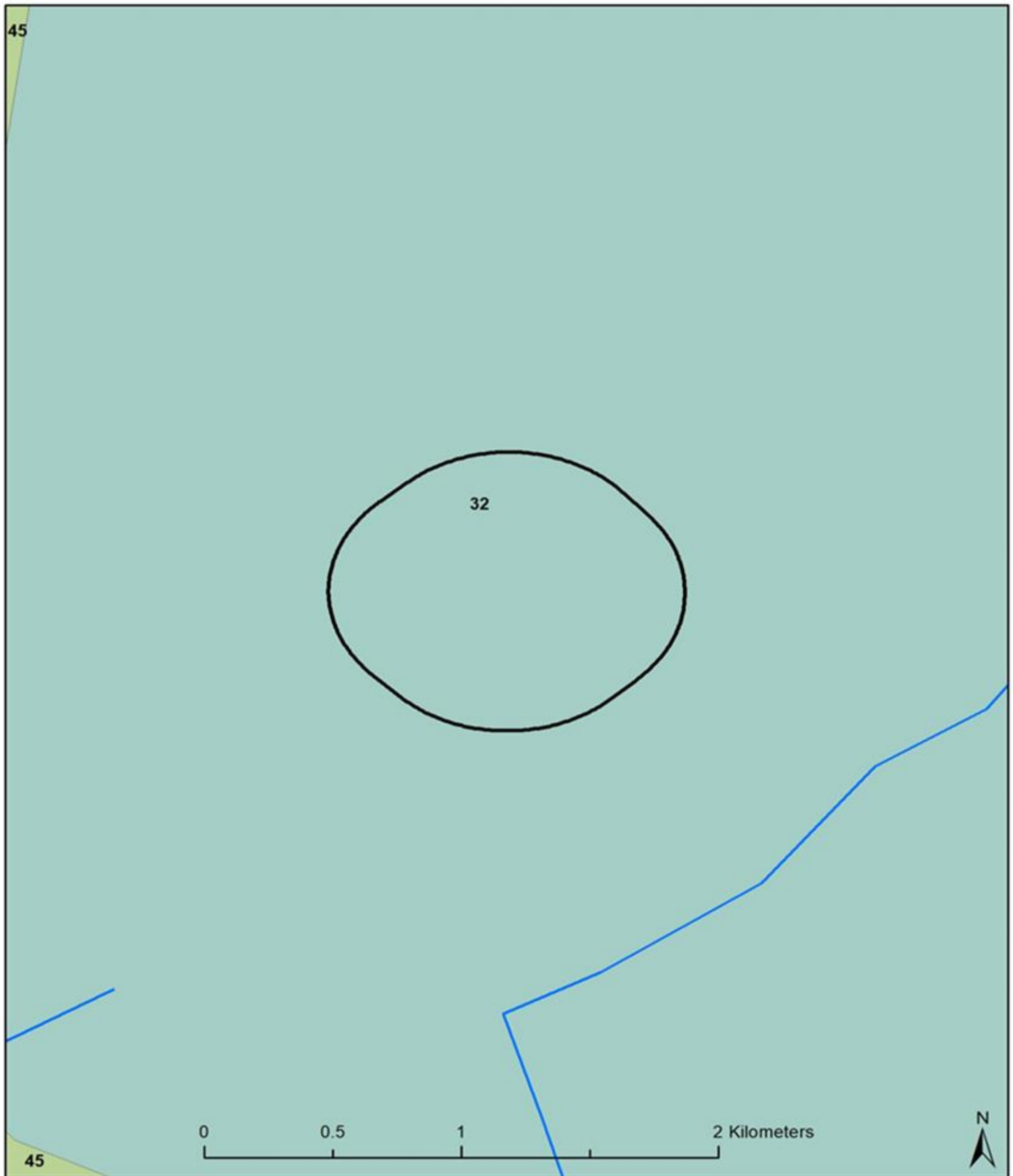
-  Project assessment zone (103.9 ha)
-  Rivers



Figure 5.16: Location of field crop boundaries in the larger area around the proposed Gunstfontein BESS project assessment zone (data source: DEFF, 2019)



Legend

Grazing capacity (ha/LSU)

- 32
- 45

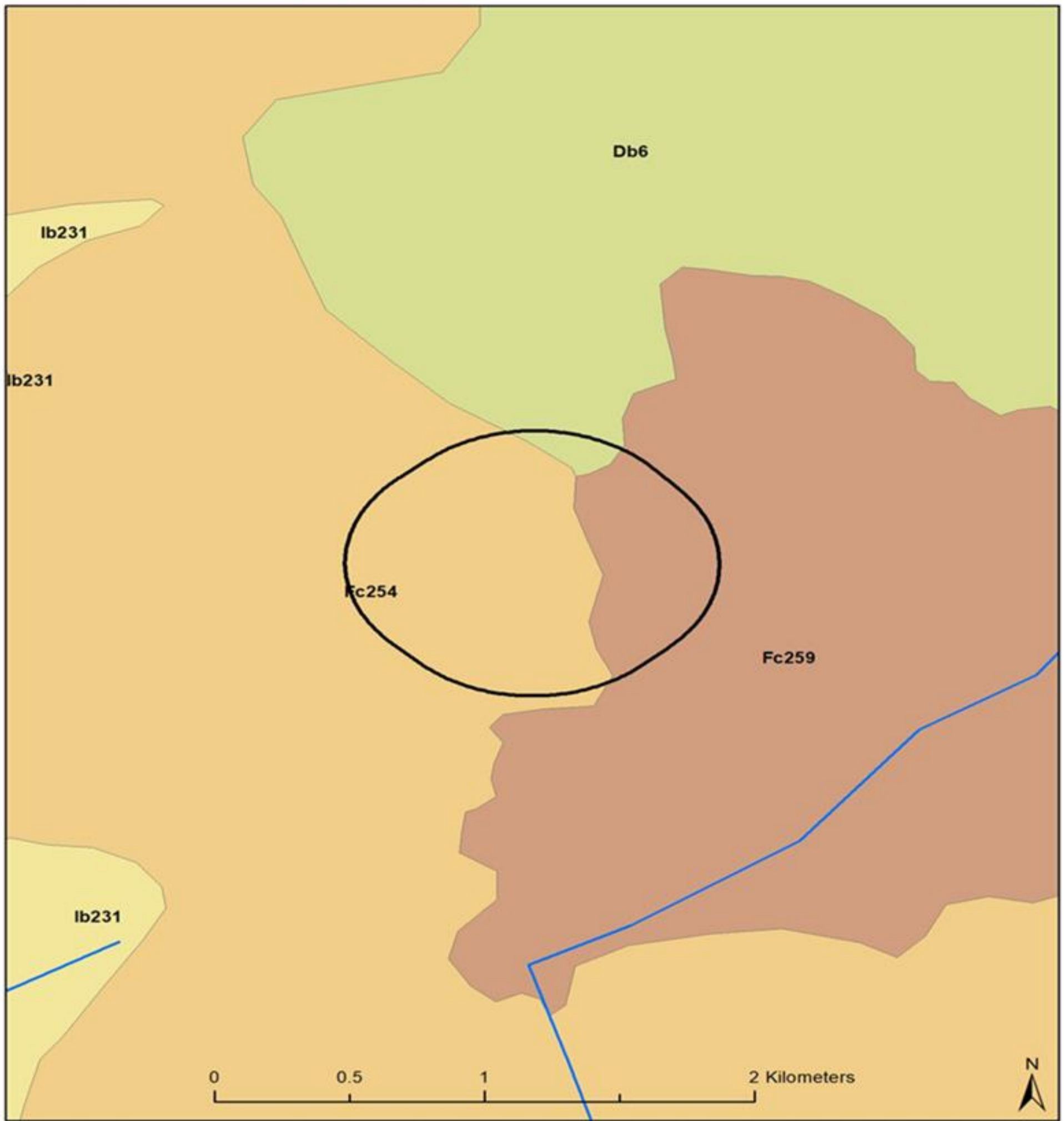
Project assessment zone (103.9 ha)

Rivers



TerraAfrica
SOIL. AGRICULTURE. ENVIRONMENT.

Figure 5.17: Grazing capacity in the larger area around the proposed Gunstfontein BESS project assessment zone (data source: DEFF, 2019)



Legend

Land type

-  Db6
-  Fc254
-  Fc259
-  Ib231

 Project assessment zone (103.9 ha)

 Rivers



Figure 5.18: Land type classification of the proposed Gunstfontein BESS project assessment zone and the surrounding area.

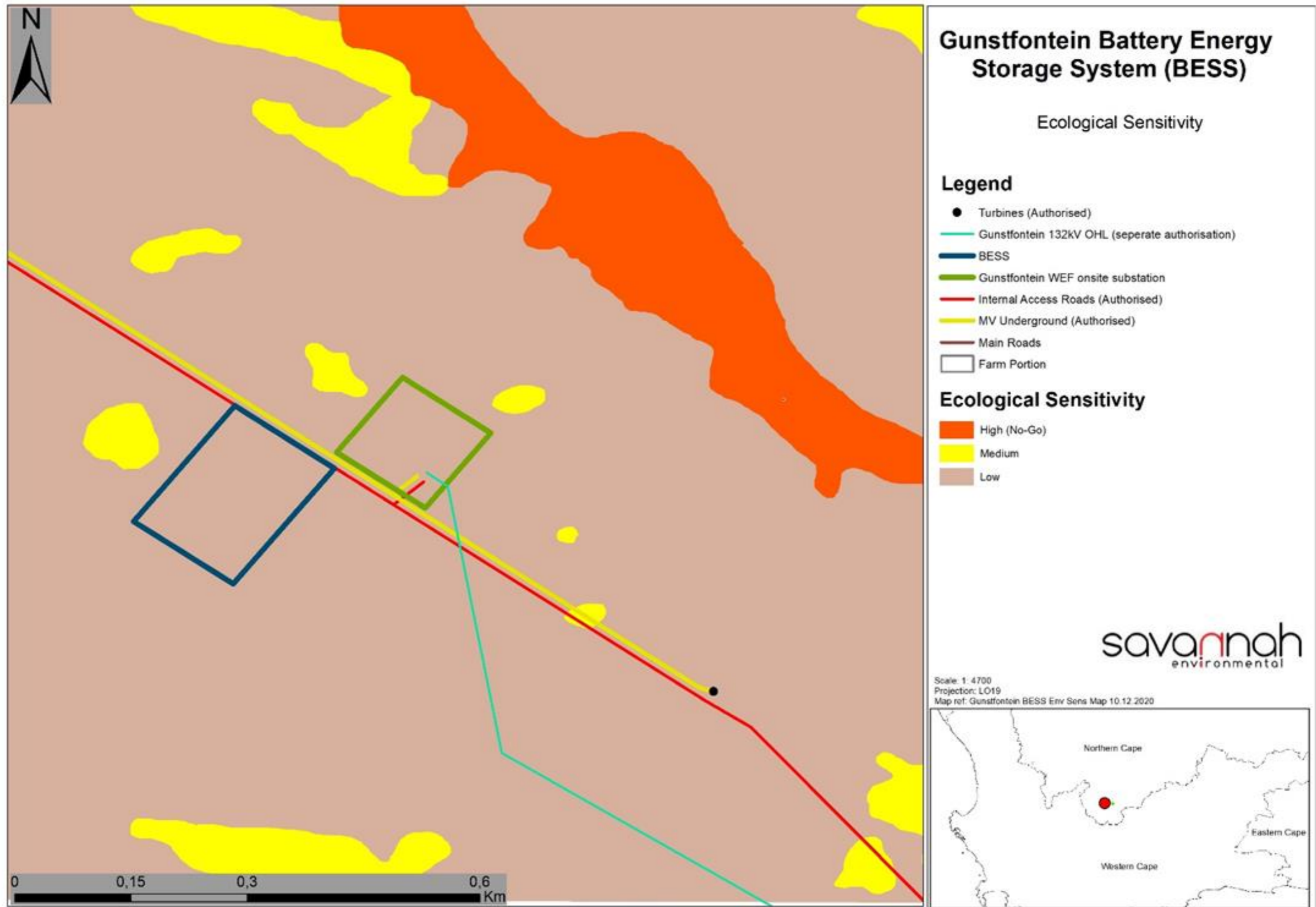


Figure 6.1: Sensitivity map for the Gunstfontein BESS 500m assessment region (note 500m assessment region is represented by the entirety of the map).

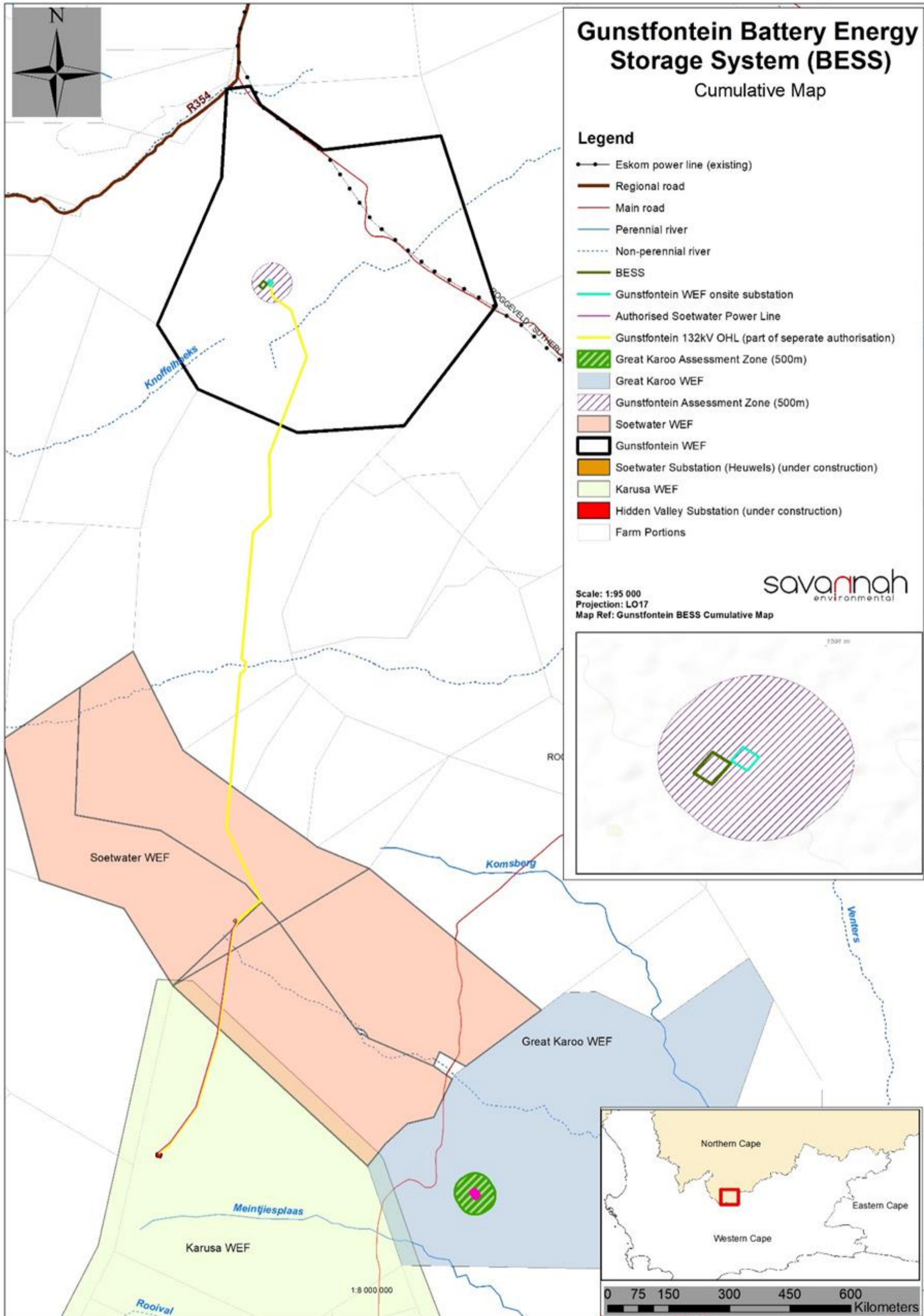


Figure 7.1: Cumulative map for the Gunstfontein BESS and associated infrastructure showing electrical infrastructure related to the two BESS projects known to be planned in the area.

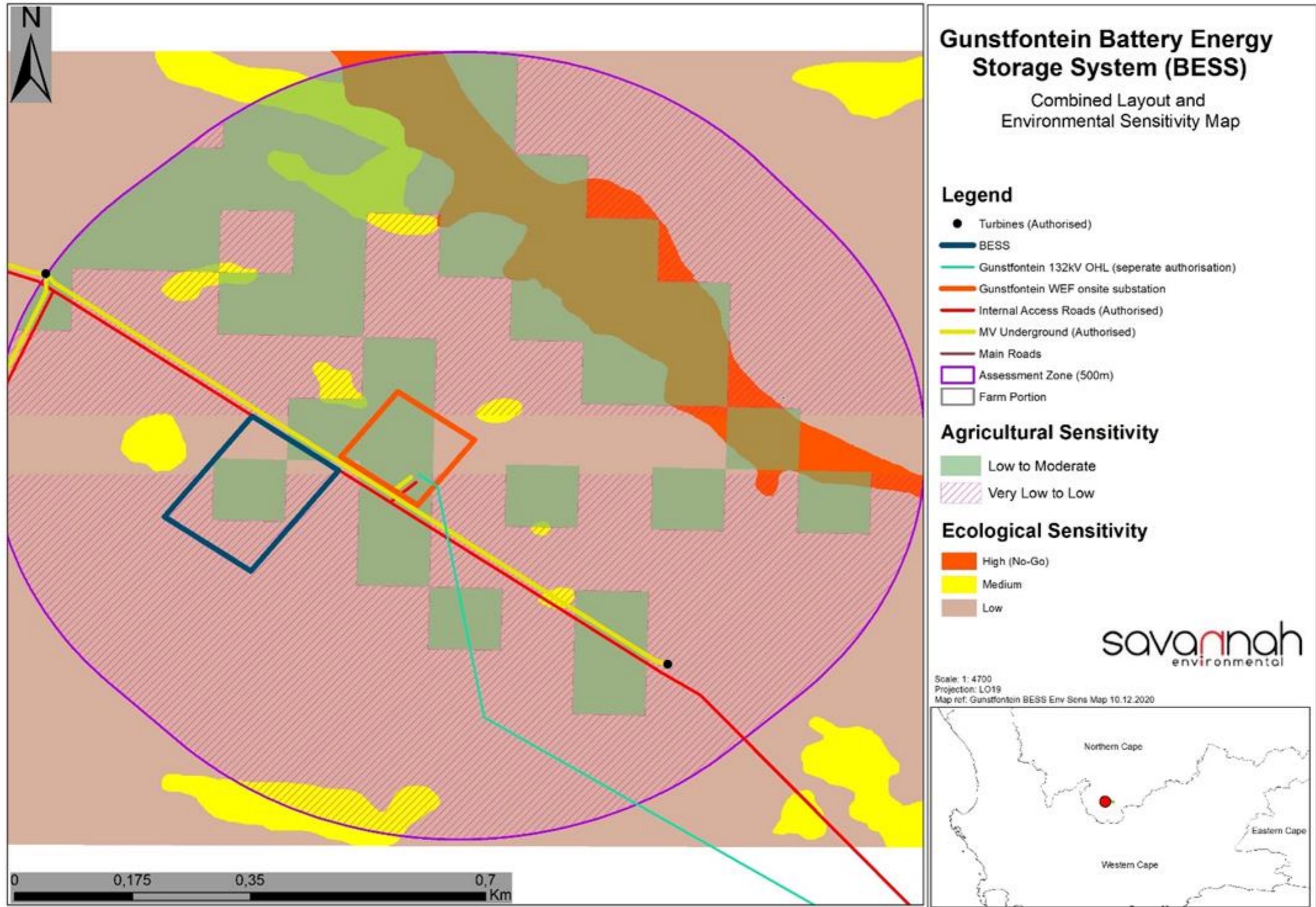


Figure 8.1: Final layout and environmental sensitivity map for the proposed BESS within the 500m assessment zone showing the final layout proposed for approval in this Basic Assessment Report. No heritage features were located within the assessed corridor.