

Sibanye Stillwater Solar PV Development Wonderkop Facility, West Province

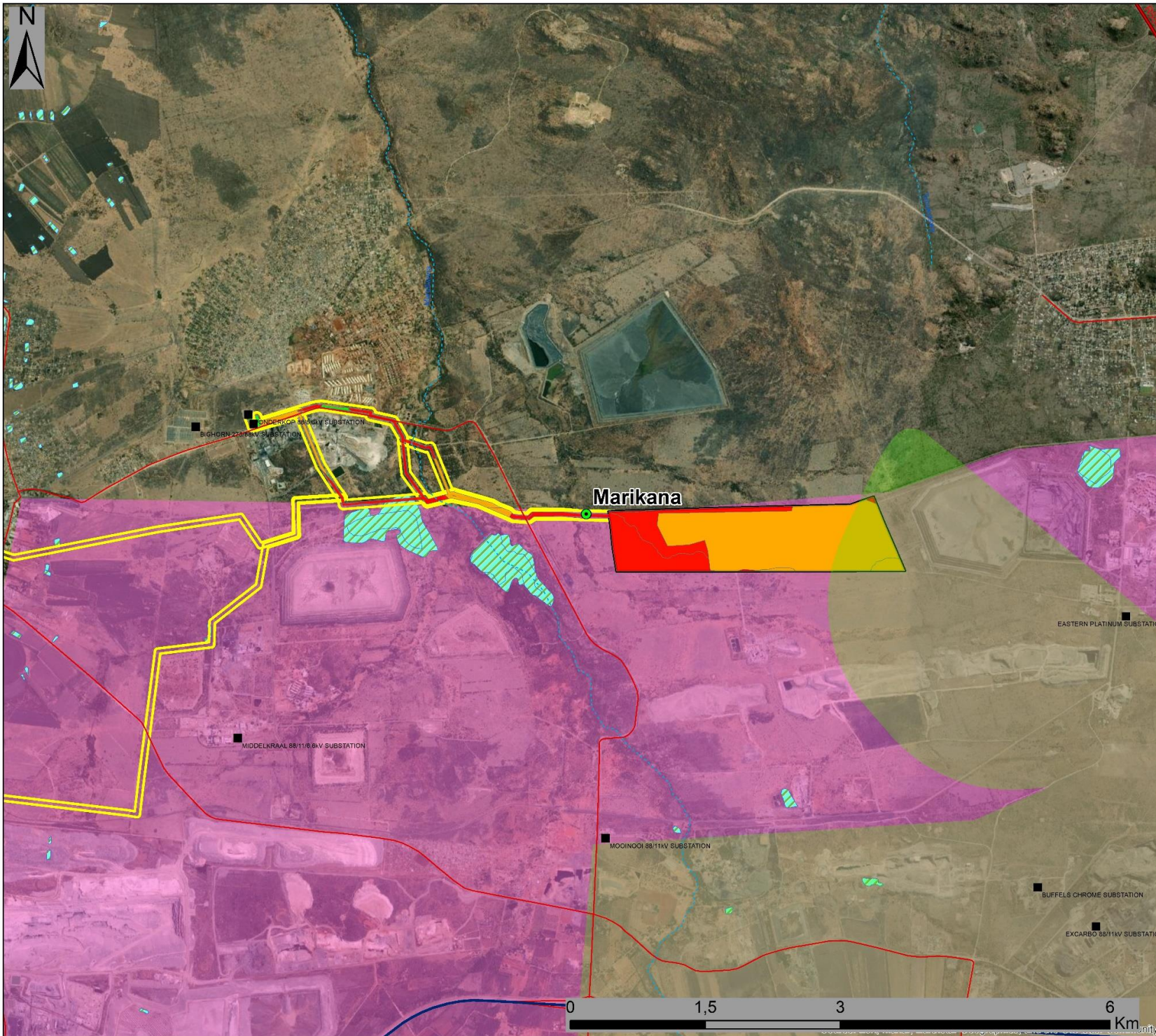
Locality Map

Legend

- Town
- Eskom Substation
- Existing Power Line
- National Route
- Main Road
- Regional Road
- Perennial River
- Non-perennial River
- Existing Power Line**
- Existing Power Line
- Wonderkop Evacuation Lines**
- Alternative 1
- Alternative 2
- Alternative 3
- Alternative Addition
- Development Area**
- Marikana
- Karee Evacuation Lines**
- Alternative 1 - Marikana from Karee
- Alternative 2 - Marikana from Karee

Scale: 1:100 000
 Projection: GCS_WGS_1984
 Map Ref: Sibanye Stillwater Locality Map





Sibanye Stillwater Solar PV Development Facilities North West Province Sensitivity Map

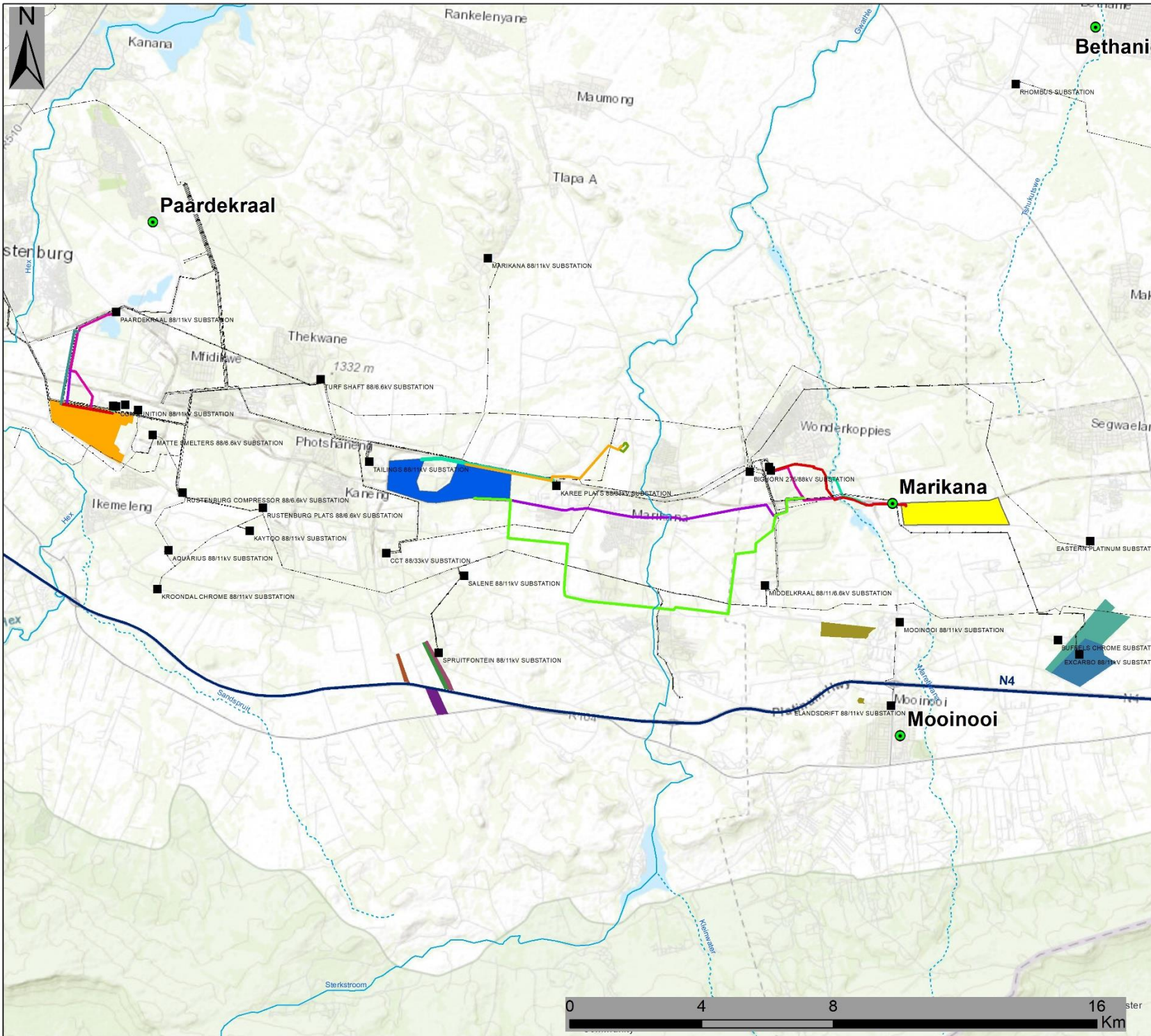
Legend

- Town
- Eskom Substation
- National Route
- Main Road
- Regional Road
- - - Railway Line
- Perennial River
- · - · Non-perennial River
- NFEPA_Wetlands(1)**
- ▨ NFEPA_Wetlands(1)
- ▭ Proposed Grid Connection Lines
- NW_CBA Area**
- ▭ CBA 1
- Threatened Soil**
- ▨ Marikana Thornveld
- IBA Sensitivity Areas**
- ▭ Magaliesberg
- Site Sensitivities**
- ▭ High
- ▭ Low
- ▭ Moderate

Scale: 1:100 000
 Projection: GCS_WGS_1984
 Map Ref: Sibanye Stillwater Sensitivity Map

savannah
 environmental





Sibanye Stillwater Solar PV Development Marikana Facility, RPM Facility and Karee Facility North West Province

Cumulative Map

Legend

- Town
 - Eskom Substation
 - Existing Power Line
 - National Route
 - Perennial River
 - - - Non-perennial River
- Development Areas**
- RPM PV Facility
 - Karee PV Facility
 - Marikana PV Facility
- RPM Evacuation Lines and Infrastructure**
- Evacuation Line Option 1.1
 - Evacuation Line Option 1.2
 - Evacuation Line Option 1.3
 - Evacuation Line 2
 - Evacuation Line Option 3
- Marikana Evacuation Lines**
- Evacuation Line Option 1
 - Evacuation Line Option 2
 - Evacuation Line Option 3
 - Alternative To Tie In Point
- Karee Evacuation Lines**
- Evacuation Line SS Option 1
 - Evacuation Line SS Option 2
 - Alternative 1 - Marikana
 - Alternative 2 - Marikana
 - Outdoor Switchyard Evacuation Line
 - Alternative Routing
- Surrounding Energy Facilities**
- Construction of the RUSTMO1 PV Plant (Authorised)
 - Construction of the RUSTMO2 PV Plant (Authorised)
 - Proposed Construction of the RUSTMO3 PV Plant (In Process)
 - Proposed Construction of the RUSTMO4 PV Plant (In Process)
 - Lonmin Western Platinum Limited PV Plant (In Process)
 - Avelar Solar Panel Project for International Ferro Metals (Authorised)
 - Expansion of the co-generation plant, including oil tanks (Authorised)

Scale: 1:100 000

Projection: GCS_WGS_1984

Map Ref: Sibanye Stillwater Cumulative Map

