

**SCREENING REPORT FOR AN ENVIRONMENTAL AUTHORIZATION AS
REQUIRED BY THE 2014 EIA REGULATIONS – PROPOSED DEVELOPMENT
FOOTPRINT ENVIRONMENTAL SENSITIVITY**

EIA Reference number: 16/3/3/6/7/1/E2/15/1265/20

Project name: Poole's Bay connection path

Project title: Proposed development of pedestrian path through Poole's Bay

Date screening report generated: 05/11/2021 15:20:40

Applicant: Cliff Path Action Group

Compiler: K Myburgh Ecosense

Compiler signature:
.....

Application Category: Any activity in an estuary_on the seashore_in the littoral active zone_or in the sea



Ecosense

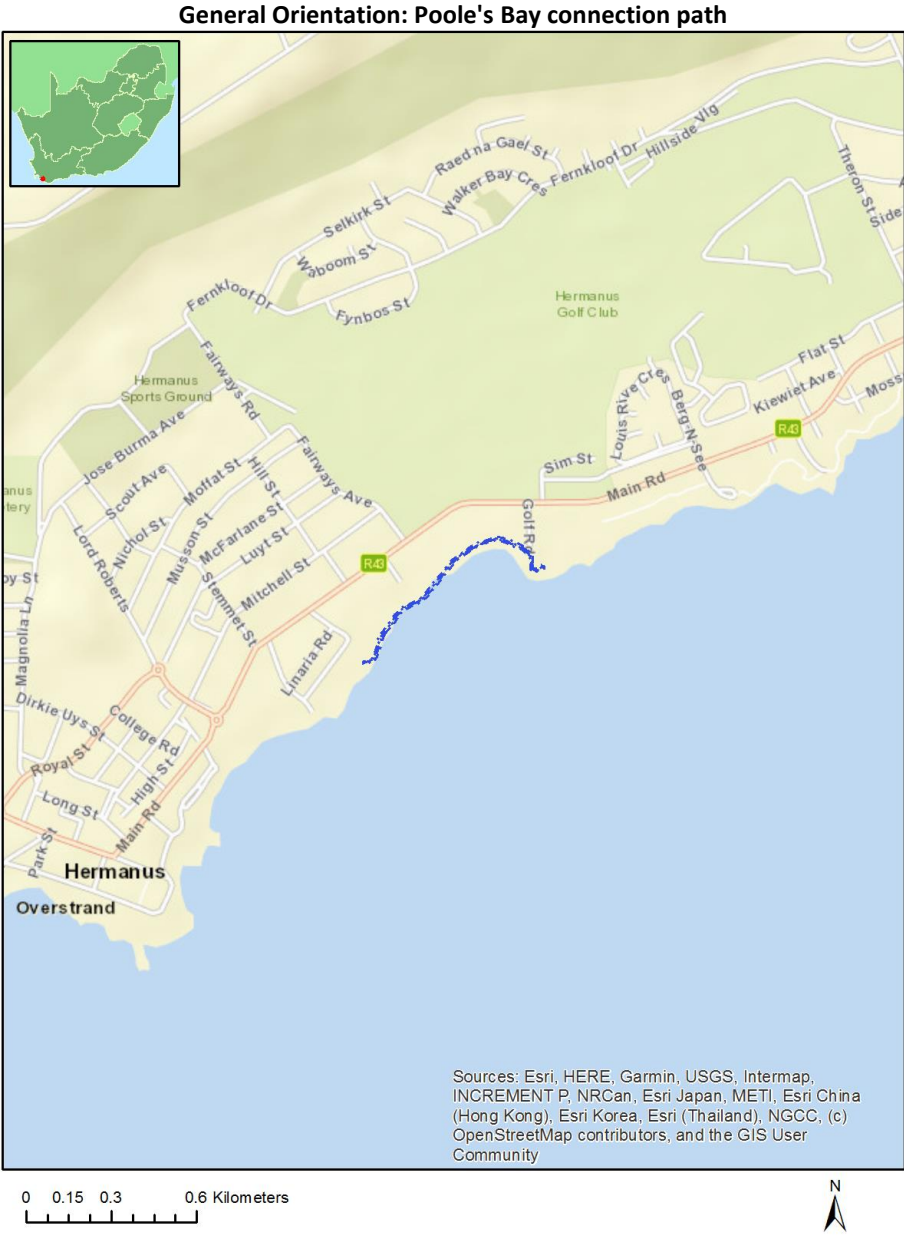
Consulting Environmentalists
Konsulerende Omgewingskundiges

Table of Contents

Proposed Project Location	3
Orientation map 1: General location	3
Map of proposed site and relevant area(s)	4
Cadastral details of the proposed site	4
Wind and Solar developments with an approved Environmental Authorisation or applications under consideration within 30 km of the proposed area	6
Environmental Management Frameworks relevant to the application	7
Environmental screening results and assessment outcomes	7
Relevant development incentives, restrictions, exclusions or prohibitions	7
Map indicating proposed development footprint within applicable development incentive, restriction, exclusion or prohibition zones	8
Proposed Development Area Environmental Sensitivity	8
Specialist assessments identified	9
Results of the environmental sensitivity of the proposed area	11
MAP OF RELATIVE AGRICULTURE THEME SENSITIVITY	11
MAP OF RELATIVE ANIMAL SPECIES THEME SENSITIVITY	12
MAP OF RELATIVE AQUATIC BIODIVERSITY THEME SENSITIVITY	13
MAP OF RELATIVE ARCHAEOLOGICAL AND CULTURAL HERITAGE THEME SENSITIVITY	14
MAP OF RELATIVE CIVIL AVIATION THEME SENSITIVITY	15
MAP OF RELATIVE DEFENCE THEME SENSITIVITY	16
MAP OF RELATIVE PALEONTOLOGY THEME SENSITIVITY	17
MAP OF RELATIVE PLANT SPECIES THEME SENSITIVITY	18
MAP OF RELATIVE TERRESTRIAL BIODIVERSITY THEME SENSITIVITY	20

Proposed Project Location

Orientation map 1: General location



Map of proposed site and relevant area(s)



Cadastral details of the proposed site

Property details:

No	Farm Name	Farm/ Erf No	Portion	Latitude	Longitude	Property Type
1	HERMANUS	1247	0	34°24'44.49S	19°15'8.43E	Erven
2	HERMANUS	1250	0	34°24'42.95S	19°15'12.89E	Erven
3	HERMANUS	6088	0	34°24'43.69S	19°15'16.29E	Erven
4	HERMANUS	6337	0	34°24'46.37S	19°15'5.47E	Erven
5	HERMANUS	1249	0	34°24'42.92S	19°15'10.87E	Erven

Development footprint¹ vertices:

Footprint	Latitude	Longitude
1	34°24'56.01S	19°14'58.47E
1	34°24'55.99S	19°14'58.46E
1	34°24'55.99S	19°14'58.45E
1	34°24'55.99S	19°14'58.44E
1	34°24'55.98S	19°14'58.43E
1	34°24'55.98S	19°14'58.43E
1	34°24'55.97S	19°14'58.43E
1	34°24'55.95S	19°14'58.43E
1	34°24'55.95S	19°14'58.43E
1	34°24'55.94S	19°14'58.43E
1	34°24'55.93S	19°14'58.44E

¹ “development footprint”, means the area within the site on which the development will take place and includes all ancillary developments for example roads, power lines, boundary walls, paving etc. which require vegetation clearance or which will be disturbed and for which the application has been submitted.

1	34°24'55.93S	19°14'58.45E
1	34°24'55.93S	19°14'58.45E
1	34°24'55.6S	19°14'59.57E
1	34°24'53.58S	19°15'0.34E
1	34°24'53.58S	19°15'0.34E
1	34°24'53.56S	19°15'0.34E
1	34°24'53.56S	19°15'0.34E
1	34°24'52.64S	19°15'1.22E
1	34°24'51.61S	19°15'2.03E
1	34°24'51.6S	19°15'2.03E
1	34°24'50.78S	19°15'3.01E
1	34°24'50.76S	19°15'3.01E
1	34°24'50.76S	19°15'3.03E
1	34°24'50.76S	19°15'3.03E
1	34°24'50.16S	19°15'4.74E
1	34°24'49.51S	19°15'5.64E
1	34°24'46.89S	19°15'8.11E
1	34°24'46.35S	19°15'8.65E
1	34°24'46.35S	19°15'8.66E
1	34°24'45.61S	19°15'9.86E
1	34°24'44.87S	19°15'11.4E
1	34°24'44.86S	19°15'11.41E
1	34°24'44.5S	19°15'12.74E
1	34°24'44.5S	19°15'12.74E
1	34°24'44.5S	19°15'12.74E
1	34°24'44.35S	19°15'13.38E
1	34°24'44.35S	19°15'13.38E
1	34°24'44.34S	19°15'13.4E
1	34°24'44.34S	19°15'13.4E
1	34°24'44.42S	19°15'14.21E
1	34°24'44.42S	19°15'14.22E
1	34°24'44.65S	19°15'15.02E
1	34°24'45.12S	19°15'16.43E
1	34°24'45.12S	19°15'16.43E
1	34°24'45.13S	19°15'16.44E
1	34°24'45.64S	19°15'17.21E
1	34°24'45.64S	19°15'17.21E
1	34°24'45.64S	19°15'17.22E
1	34°24'45.65S	19°15'17.22E
1	34°24'46.02S	19°15'17.44E
1	34°24'46.02S	19°15'17.44E
1	34°24'46.02S	19°15'17.44E
1	34°24'46.93S	19°15'17.59E
1	34°24'47.15S	19°15'17.7E
1	34°24'47.22S	19°15'17.87E
1	34°24'47.25S	19°15'18.07E
1	34°24'47.12S	19°15'18.52E
1	34°24'47S	19°15'18.72E
1	34°24'47S	19°15'18.72E
1	34°24'47S	19°15'18.73E
1	34°24'47S	19°15'18.75E
1	34°24'47S	19°15'18.76E
1	34°24'47S	19°15'18.77E
1	34°24'47.01S	19°15'18.77E
1	34°24'47.01S	19°15'18.79E
1	34°24'47.01S	19°15'18.79E
1	34°24'47.03S	19°15'18.8E
1	34°24'47.04S	19°15'18.81E
1	34°24'47.04S	19°15'18.81E
1	34°24'47.05S	19°15'18.81E

1	34°24'47.07S	19°15'18.81E
1	34°24'47.07S	19°15'18.8E
1	34°24'47.08S	19°15'18.79E
1	34°24'47.08S	19°15'18.78E
1	34°24'47.08S	19°15'18.77E
1	34°24'47.08S	19°15'18.76E
1	34°24'47.08S	19°15'18.75E
1	34°24'47.08S	19°15'18.75E
1	34°24'47.19S	19°15'18.55E
1	34°24'47.19S	19°15'18.55E
1	34°24'47.33S	19°15'18.09E
1	34°24'47.33S	19°15'18.08E
1	34°24'47.33S	19°15'18.07E
1	34°24'47.33S	19°15'18.07E
1	34°24'47.3S	19°15'17.85E
1	34°24'47.3S	19°15'17.85E
1	34°24'47.3S	19°15'17.84E
1	34°24'47.22S	19°15'17.64E
1	34°24'47.22S	19°15'17.64E
1	34°24'47.21S	19°15'17.63E
1	34°24'47.21S	19°15'17.63E
1	34°24'47.19S	19°15'17.62E
1	34°24'46.96S	19°15'17.5E
1	34°24'46.96S	19°15'17.5E
1	34°24'46.96S	19°15'17.5E
1	34°24'46.04S	19°15'17.35E
1	34°24'45.69S	19°15'17.14E
1	34°24'45.19S	19°15'16.39E
1	34°24'44.73S	19°15'14.98E
1	34°24'44.5S	19°15'14.2E
1	34°24'44.42S	19°15'13.4E
1	34°24'44.58S	19°15'12.78E
1	34°24'44.94S	19°15'11.45E
1	34°24'45.68S	19°15'9.92E
1	34°24'46.41S	19°15'8.72E
1	34°24'46.94S	19°15'8.18E
1	34°24'49.57S	19°15'5.71E
1	34°24'49.57S	19°15'5.7E
1	34°24'50.21S	19°15'4.79E
1	34°24'50.23S	19°15'4.79E
1	34°24'50.23S	19°15'4.78E
1	34°24'50.83S	19°15'3.08E
1	34°24'51.65S	19°15'2.09E
1	34°24'52.68S	19°15'1.28E
1	34°24'53.61S	19°15'0.42E
1	34°24'55.64S	19°14'59.66E
1	34°24'55.64S	19°14'59.66E
1	34°24'55.65S	19°14'59.64E
1	34°24'55.65S	19°14'59.64E
1	34°24'55.66S	19°14'59.63E
1	34°24'55.66S	19°14'59.62E
1	34°24'55.99S	19°14'58.48E
1	34°24'55.99S	19°14'58.48E
1	34°24'56.01S	19°14'58.47E

Wind and Solar developments with an approved Environmental Authorisation or applications under consideration within 30 km of the proposed area

No nearby wind or solar developments found.

Environmental Management Frameworks relevant to the application

No intersections with EMF areas found.

Environmental screening results and assessment outcomes

The following sections contain a summary of any development incentives, restrictions, exclusions or prohibitions that apply to the proposed development footprint as well as the most environmental sensitive features on the footprint based on the footprint sensitivity screening results for the application classification that was selected. The application classification selected for this report is:

Any activity in an estuary_on the seashore_in the littoral active zone_or in the sea.

Relevant development incentives, restrictions, exclusions or prohibitions

The following development incentives, restrictions, exclusions or prohibitions and their implications that apply to this footprint are indicated below.

No intersection with any development zones found.

Map indicating proposed development footprint within applicable development incentive, restriction, exclusion or prohibition zones

Project Location: Poole's Bay connection path



Proposed Development Area Environmental Sensitivity

The following summary of the development footprint environmental sensitivities is identified. Only the highest environmental sensitivity is indicated. The footprint environmental sensitivities for the proposed development footprint as identified, are indicative only and must be verified on site by a suitably qualified person before the specialist assessments identified below can be confirmed.

Theme	Very High sensitivity	High sensitivity	Medium sensitivity	Low sensitivity
Agriculture Theme			X	
Animal Species Theme		X		

Aquatic Biodiversity Theme				X
Archaeological and Cultural Heritage Theme	X			
Civil Aviation Theme			X	
Defence Theme				X
Paleontology Theme		X		
Plant Species Theme			X	
Terrestrial Biodiversity Theme	X			

Specialist assessments identified

Based on the selected classification, and the environmental sensitivities of the proposed development footprint, the following list of specialist assessments have been identified for inclusion in the assessment report. It is the responsibility of the EAP to confirm this list and to motivate in the assessment report, the reason for not including any of the identified specialist study including the provision of photographic evidence of the footprint situation.

No	Specialist assessment	Assessment Protocol
1	Landscape/Visual Impact Assessment	https://screening.environment.gov.za/ScreeningDownloads/AssessmentProtocols/Gazetted_General_Requirement_Assessment_Protocols.pdf
2	Archaeological and Cultural Heritage Impact Assessment	https://screening.environment.gov.za/ScreeningDownloads/AssessmentProtocols/Gazetted_General_Requirement_Assessment_Protocols.pdf
3	Palaeontology Impact Assessment	https://screening.environment.gov.za/ScreeningDownloads/AssessmentProtocols/Gazetted_General_Requirement_Assessment_Protocols.pdf
4	Terrestrial Biodiversity Impact Assessment	https://screening.environment.gov.za/ScreeningDownloads/AssessmentProtocols/Gazetted_Terrestrial_Biodiversity_Assessment_Protocols.pdf
5	Aquatic Biodiversity Impact Assessment	https://screening.environment.gov.za/ScreeningDownloads/AssessmentProtocols/Gazetted_Aquatic_Biodiversity_Assessment_Protocols.pdf
6	Marine Impact Assessment	https://screening.environment.gov.za/ScreeningDownloads/AssessmentProtocols/Gazetted_General_Requirement_Assessment_Protocols.pdf
7	Hydrology Assessment	https://screening.environment.gov.za/ScreeningDownloads/AssessmentProtocols/Gazetted_General_Requirement_Assessment_Protocols.pdf

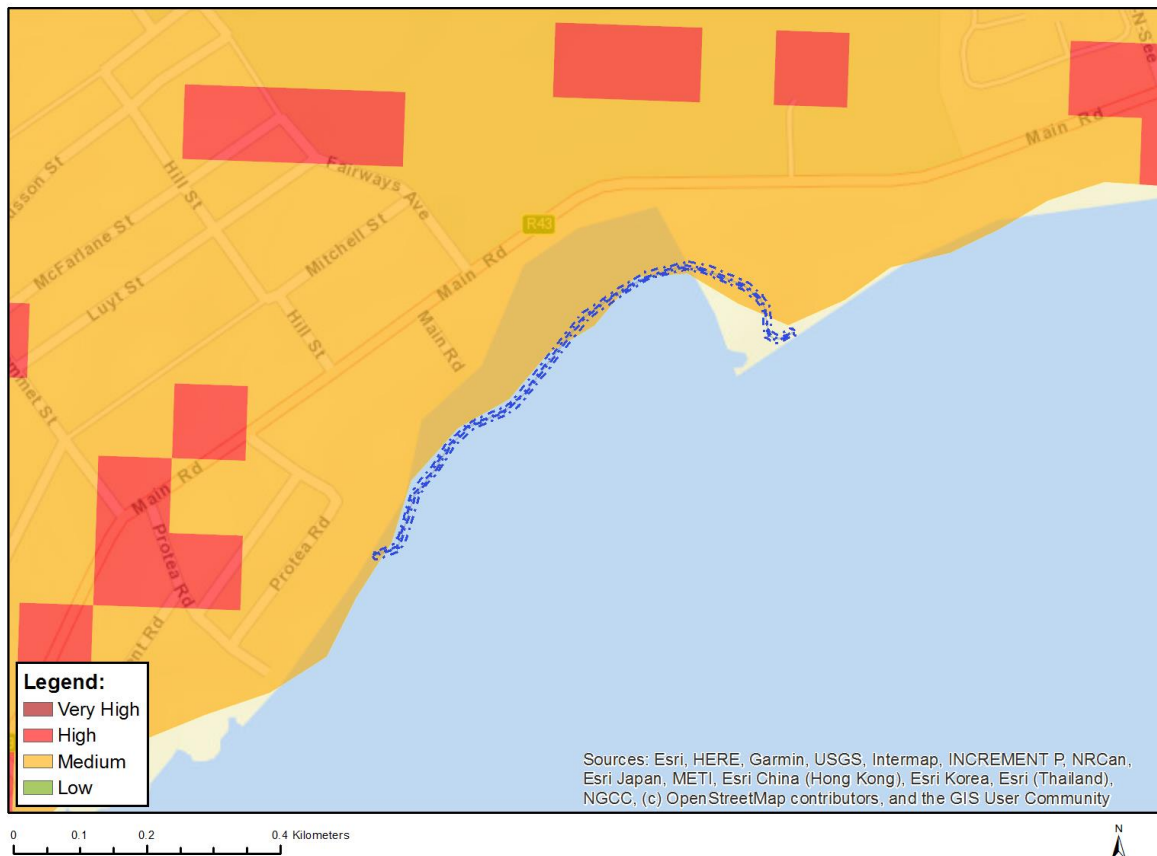
	ent	
8	Socio-Economic Assessment	https://screening.environment.gov.za/ScreeningDownloads/AssessmentProtocols/Gazetted_General_Requirement_Assessment_Protocols.pdf
9	Plant Species Assessment	https://screening.environment.gov.za/ScreeningDownloads/AssessmentProtocols/Gazetted_Plant_Species_Assessment_Protocols.pdf
10	Animal Species Assessment	https://screening.environment.gov.za/ScreeningDownloads/AssessmentProtocols/Gazetted_Animal_Species_Assessment_Protocols.pdf

OFFICIAL

Results of the environmental sensitivity of the proposed area.

The following section represents the results of the screening for environmental sensitivity of the proposed footprint for relevant environmental themes associated with the project classification. It is the duty of the EAP to ensure that the environmental themes provided by the screening tool are comprehensive and complete for the project. Refer to the disclaimer.

MAP OF RELATIVE AGRICULTURE THEME SENSITIVITY

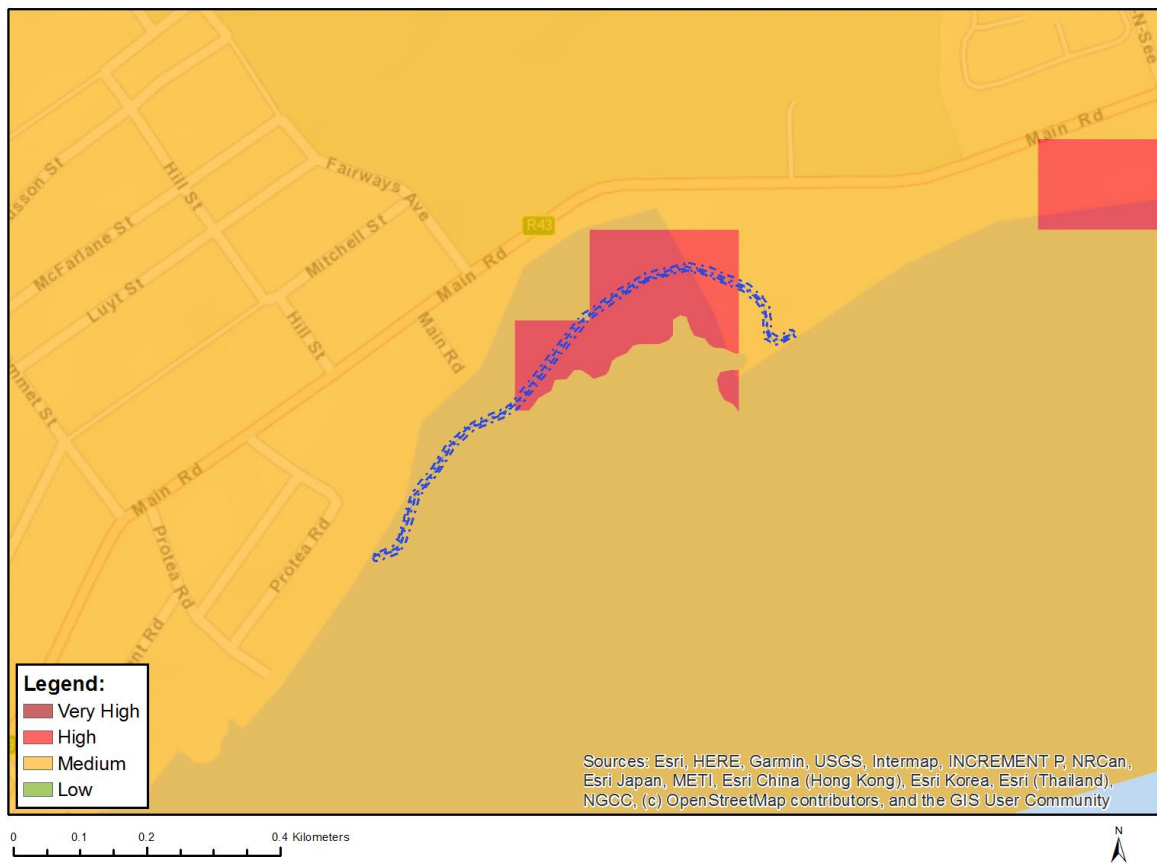


Very High sensitivity	High sensitivity	Medium sensitivity	Low sensitivity
		X	

Sensitivity Features:

Sensitivity	Feature(s)
Medium	Land capability;06. Low-Moderate/07. Low-Moderate/08. Moderate

MAP OF RELATIVE ANIMAL SPECIES THEME SENSITIVITY



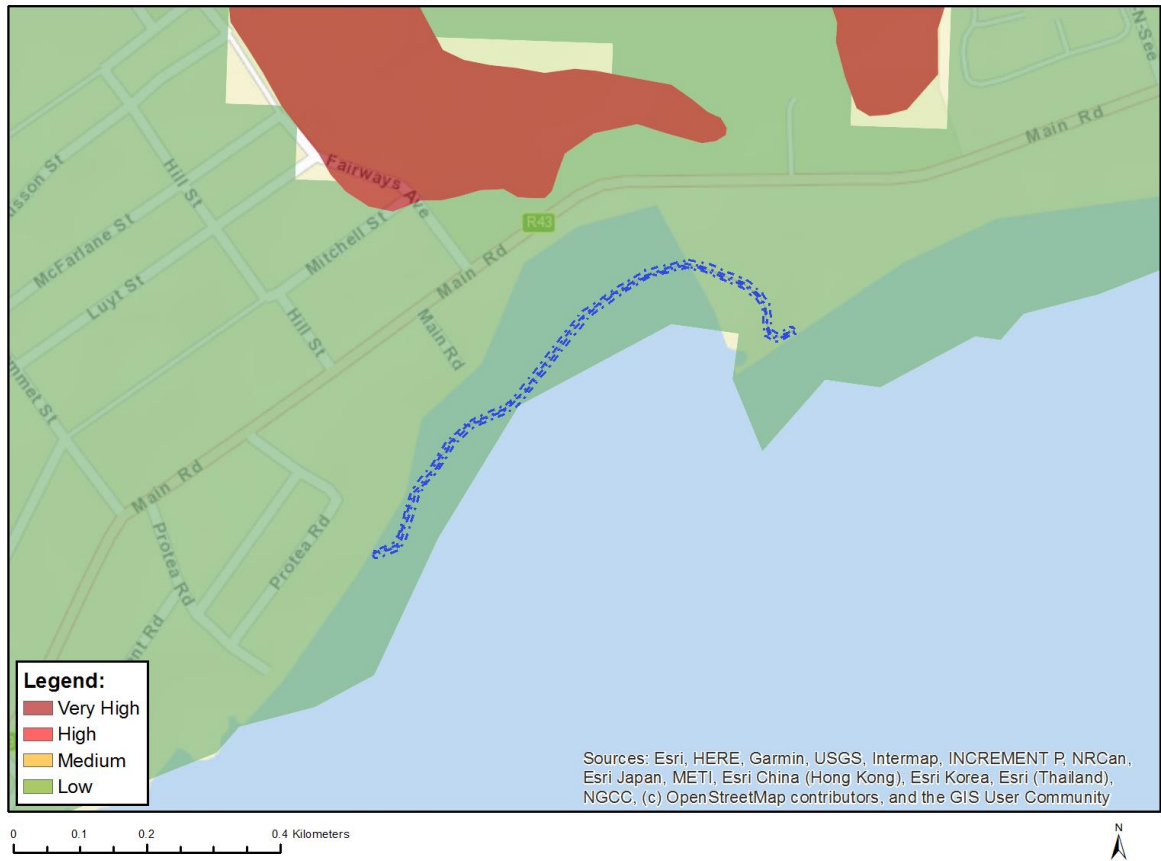
Where only a sensitive plant unique number or sensitive animal unique number is provided in the screening report and an assessment is required, the environmental assessment practitioner (EAP) or specialist is required to email SANBI at eiadatarequests@sanbi.org.za listing all sensitive species with their unique identifiers for which information is required. The name has been withheld as the species may be prone to illegal harvesting and must be protected. SANBI will release the actual species name after the details of the EAP or specialist have been documented.

Very High sensitivity	High sensitivity	Medium sensitivity	Low sensitivity
	X		

Sensitivity Features:

Sensitivity	Feature(s)
High	Aves-Circus ranivorus
Medium	Invertebrate-Brinckiella aptera
Medium	Invertebrate-Aneuryphymus montanus
Medium	Insecta-Aloeides egerides
Medium	Sensitive species 15

MAP OF RELATIVE AQUATIC BIODIVERSITY THEME SENSITIVITY

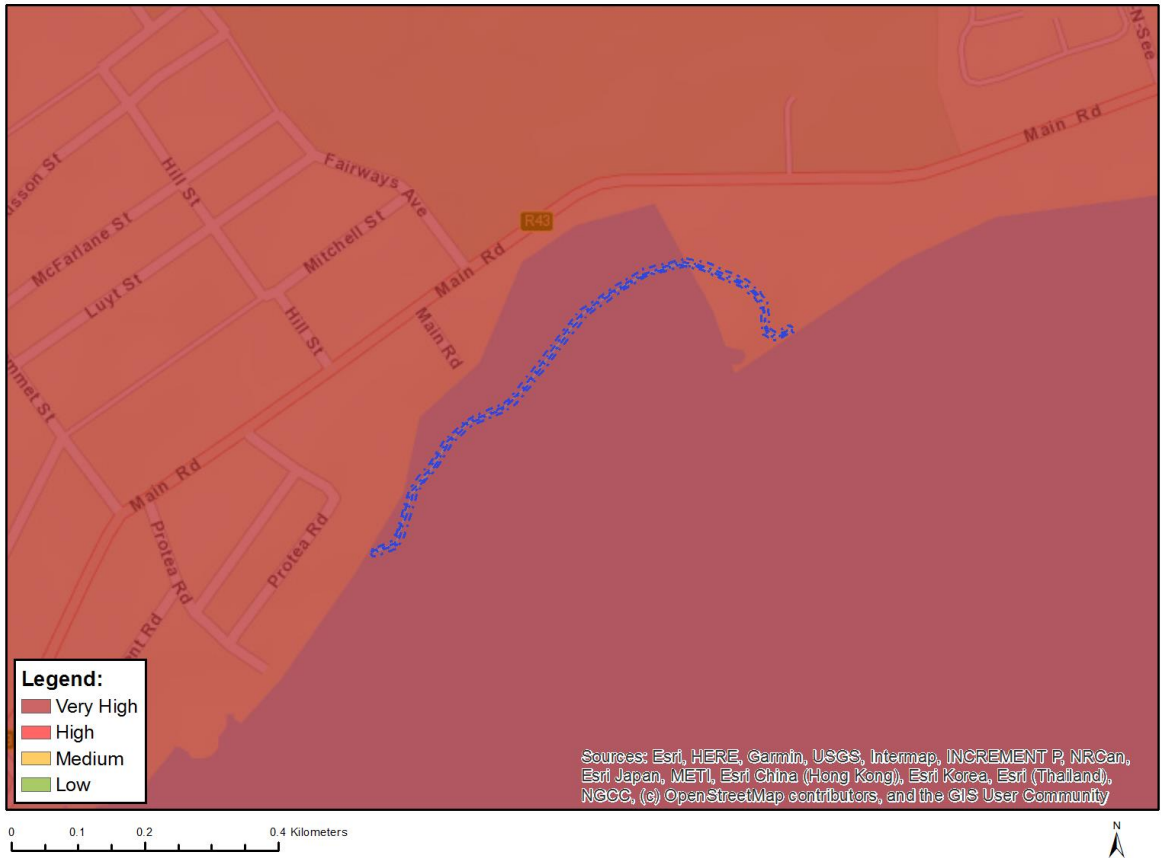


Very High sensitivity	High sensitivity	Medium sensitivity	Low sensitivity
			X

Sensitivity Features:

Sensitivity	Feature(s)
Low	Low sensitivity

MAP OF RELATIVE ARCHAEOLOGICAL AND CULTURAL HERITAGE THEME SENSITIVITY

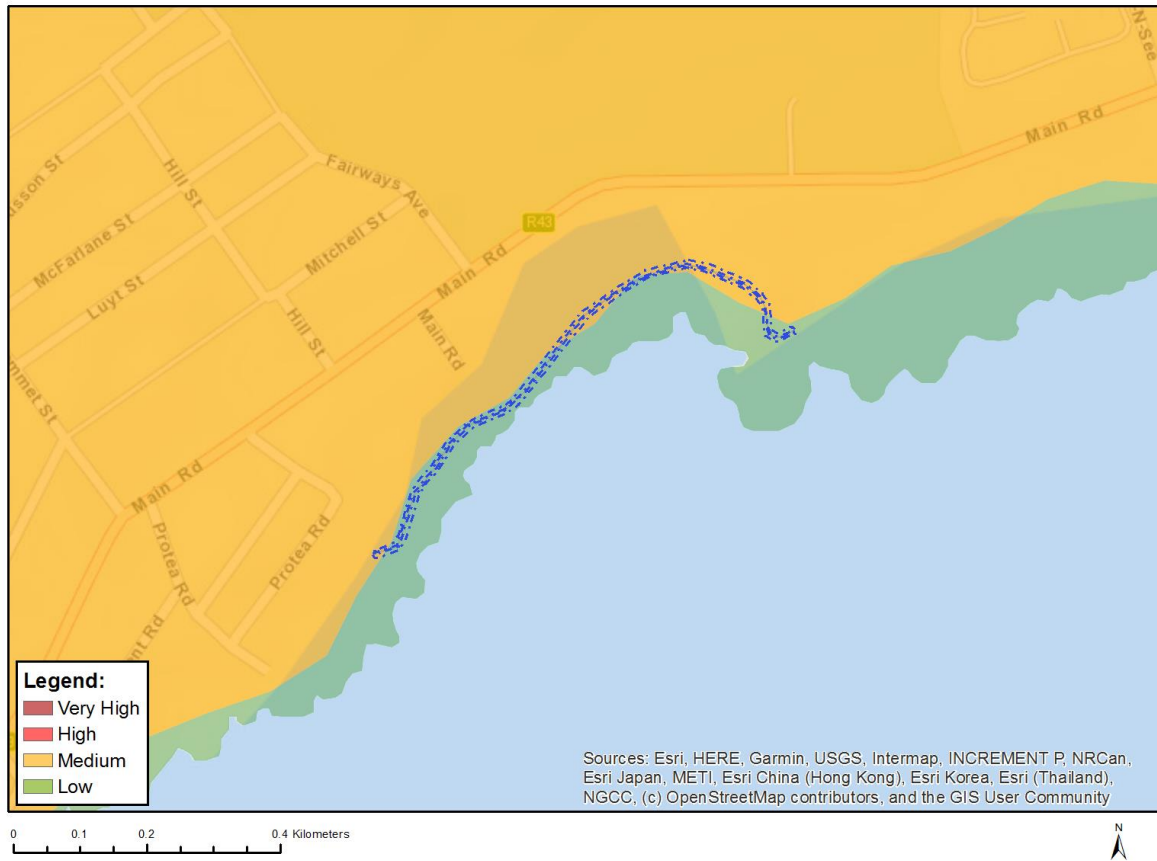


Very High sensitivity	High sensitivity	Medium sensitivity	Low sensitivity
X			

Sensitivity Features:

Sensitivity	Feature(s)
Very High	Within 2km of a Grade II Heritage site

MAP OF RELATIVE CIVIL AVIATION THEME SENSITIVITY



Very High sensitivity	High sensitivity	Medium sensitivity	Low sensitivity
		X	

Sensitivity Features:

Sensitivity	Feature(s)
Low	Low sensitivity
Medium	Between 8 and 15 km of other civil aviation aerodrome

MAP OF RELATIVE DEFENCE THEME SENSITIVITY

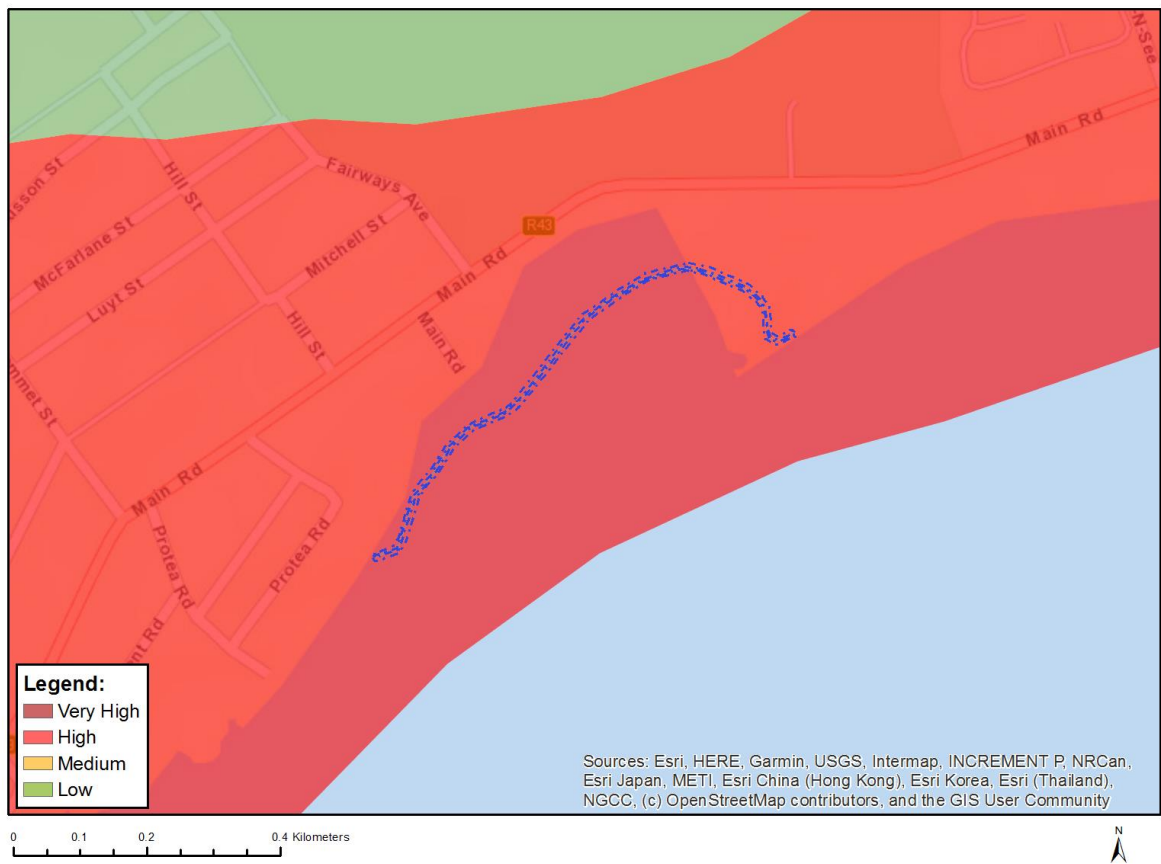


Very High sensitivity	High sensitivity	Medium sensitivity	Low sensitivity
			X

Sensitivity Features:

Sensitivity	Feature(s)
Low	Low Sensitivity

MAP OF RELATIVE PALEONTOLOGY THEME SENSITIVITY

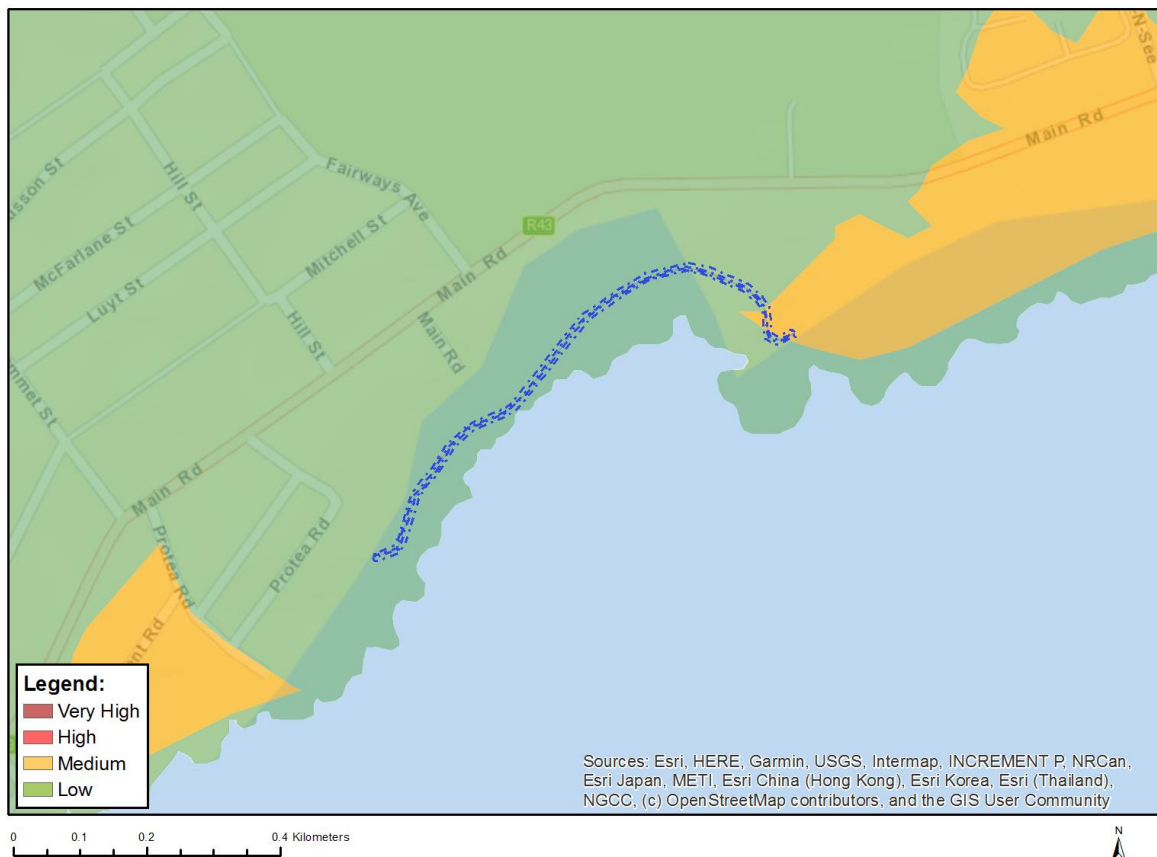


Very High sensitivity	High sensitivity	Medium sensitivity	Low sensitivity
	X		

Sensitivity Features:

Sensitivity	Feature(s)
High	Features with a High paleontological sensitivity

MAP OF RELATIVE PLANT SPECIES THEME SENSITIVITY



Where only a sensitive plant unique number or sensitive animal unique number is provided in the screening report and an assessment is required, the environmental assessment practitioner (EAP) or specialist is required to email SANBI at eiadatarequests@sanbi.org.za listing all sensitive species with their unique identifiers for which information is required. The name has been withheld as the species may be prone to illegal harvesting and must be protected. SANBI will release the actual species name after the details of the EAP or specialist have been documented.

Very High sensitivity	High sensitivity	Medium sensitivity	Low sensitivity
		X	

Sensitivity Features:

Sensitivity	Feature(s)
Low	Low Sensitivity
Medium	<i>Delosperma guthriei</i>
Medium	<i>Amphithalea virgata</i>
Medium	<i>Aspalathus excelsa</i>
Medium	<i>Aspalathus oblongifolia</i>
Medium	<i>Otholobium thomii</i>
Medium	<i>Audouinia capitata</i>
Medium	<i>Leucadendron coniferum</i>
Medium	<i>Leucadendron linifolium</i>
Medium	<i>Leucadendron platyspermum</i>
Medium	<i>Leucospermum hypophyllocarpodendron</i> subsp. <i>hypophyllocarpodendron</i>
Medium	<i>Leucospermum prostratum</i>
Medium	<i>Protea angustata</i>

Medium	<i>Protea longifolia</i>
Medium	<i>Paranomus abrotanifolius</i>
Medium	<i>Mimetes hirtus</i>
Medium	<i>Serruria heterophylla</i>
Medium	<i>Serruria inconspicua</i>
Medium	<i>Merciera azurea</i>
Medium	<i>Roella arenaria</i>
Medium	<i>Apodytes geldenhuysii</i>
Medium	<i>Manulea exigua</i>
Medium	<i>Ehrharta setacea</i> subsp. <i>uniflora</i>
Medium	<i>Echiostachys ecklonianus</i>
Medium	Sensitive species 232
Medium	Sensitive species 1104
Medium	<i>Erica capillaris</i> var. <i>capillaris</i>
Medium	<i>Erica melanacme</i>
Medium	<i>Erica patersonii</i>
Medium	<i>Erica riparia</i>
Medium	<i>Erica ecklonii</i>
Medium	<i>Erica hermani</i>
Medium	<i>Erica perspicua</i> subsp. <i>latifolia</i>
Medium	<i>Brachysiphon rupestris</i>
Medium	Sensitive species 1250
Medium	Sensitive species 714
Medium	<i>Ficinia distans</i>
Medium	<i>Ficinia elatior</i>
Medium	<i>Ficinia pinguior</i>
Medium	<i>Thamnochortus dumosus</i>
Medium	<i>Thamnochortus pellucidus</i>
Medium	<i>Elegia fenestrata</i>
Medium	<i>Restio clandestinus</i>
Medium	<i>Restio anomalus</i>
Medium	<i>Restio papillosus</i>
Medium	Sensitive species 460
Medium	Sensitive species 1139
Medium	<i>Pterygodium cruciferum</i>
Medium	<i>Pterygodium bifidum</i>
Medium	<i>Gnidia humilis</i>
Medium	<i>Metalasia plicata</i>
Medium	<i>Zyrphelis corymbosa</i>
Medium	<i>Thaminophyllum latifolium</i>
Medium	<i>Pteronia tenuifolia</i>
Medium	<i>Agathosma hookeri</i>
Medium	Sensitive species 719
Medium	Sensitive species 1151
Medium	Sensitive species 547
Medium	<i>Skiatophytum skiatophytoides</i>
Medium	<i>Xiphotheca reflexa</i>
Medium	<i>Aspalathus lebeckioides</i>
Medium	<i>Protea aspera</i>
Medium	<i>Paranomus bolusii</i>
Medium	Sensitive species 599
Medium	<i>Restio paludosus</i>
Medium	Sensitive species 654
Medium	<i>Lachnaea grandiflora</i>

MAP OF RELATIVE TERRESTRIAL BIODIVERSITY THEME SENSITIVITY



Very High sensitivity	High sensitivity	Medium sensitivity	Low sensitivity
X			

Sensitivity Features:

Sensitivity	Feature(s)
Low	Low Sensitivity
Very High	Critical biodiversity area 2
Very High	Ecological support area 1
Very High	Ecological support area 2
Very High	Endangered ecosystem