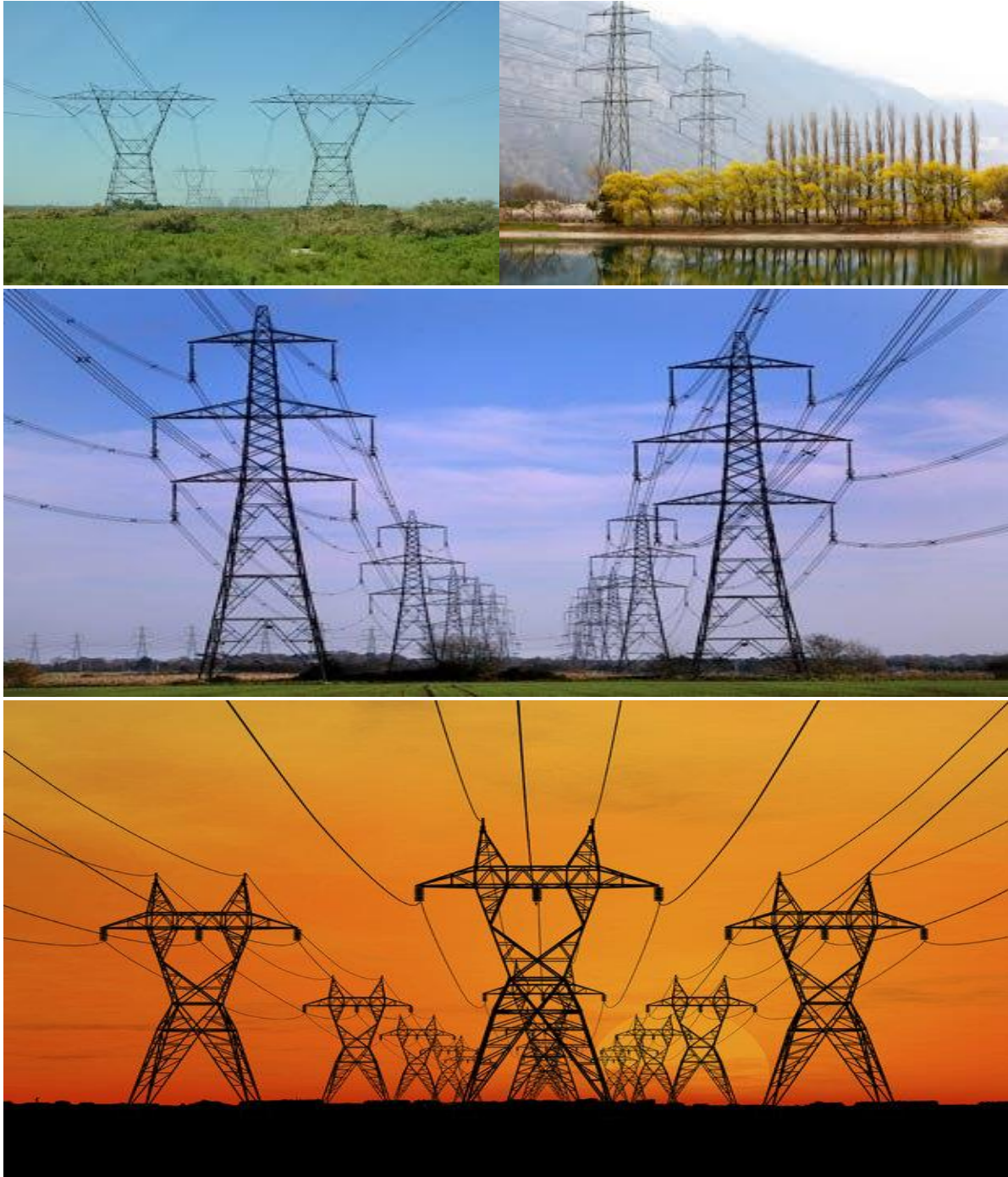


APPENDIX 1  
GENERIC ENVIRONMENTAL MANAGEMENT PROGRAMME (EMPr) FOR THE  
DEVELOPMENT AND EXPANSION FOR OVERHEAD ELECTRICITY  
TRANSMISSION AND DISTRIBUTION INFRASTRUCTURE

---



**environmental affairs**

Department:  
Environmental Affairs  
REPUBLIC OF SOUTH AFRICA

## TABLE OF CONTENTS

INTRODUCTION .....	1
1. Background .....	1
2. Purpose .....	1
3. Objective .....	1
4. Scope.....	1
5. Structure of this document.....	2
6. Completion of part B: section 1: the pre-approved generic EMPr template.....	4
7. Amendments of the impact management outcomes and impact management actions .....	4
8. Documents to be submitted as part of part B: section 2 site specific information and declaration .....	4
(a) Amendments to Part B: Section 2 – site specific information and declaration .....	5
PART A – GENERAL INFORMATION.....	6
1. DEFINITIONS .....	6
2. ACRONYMS and ABBREVIATIONS.....	7
National Environmental Management: Biodiversity Act ,2004 (Act No. 10 of 2004) .....	7
3. ROLES AND RESPONSIBILITIES FOR ENVIRONMENTAL MANAGEMENT PROGRAMME (EMPr) IMPLEMENTATION .....	8
4. ENVIRONMENTAL DOCUMENTATION REPORTING AND COMPLIANCE .....	14
4.1 Document control/Filing system .....	14
4.2 Documentation to be available .....	14
4.3 Weekly Environmental Checklist.....	14
4.4 Environmental site meetings .....	15
4.5 Required Method Statements .....	15
4.6 Environmental Incident Log (Diary) .....	16
4.7 Non-compliance .....	16
4.8 Corrective action records.....	17
4.9 Photographic record .....	17
4.10 Complaints register .....	18
4.11 Claims for damages.....	18
4.12 Interactions with affected parties .....	18
4.13 Environmental audits .....	19
4.14 Final environmental audits .....	19
PART B: SECTION 1: Pre-approved generic EMPr template .....	20
5. IMPACT MANAGEMENT OUTCOMES AND IMPACT MANAGEMENT ACTIONS .....	20
5.1 Environmental awareness training.....	21

5.2	Site Establishment development .....	24
5.3	Access restricted areas .....	24
5.4	Access roads.....	27
5.5	Fencing and Gate installation .....	30
5.6	Water Supply Management .....	34
5.7	Storm and waste water management.....	35
5.8	Solid and hazardous waste management .....	37
5.9	Protection of watercourses and estuaries.....	38
5.10	Vegetation clearing.....	43
5.11	Protection of fauna.....	48
5.12	Protection of heritage resources.....	52
5.13	Safety of the public.....	53
5.14	Sanitation .....	55
5.15	Prevention of disease .....	57
5.16	Emergency procedures.....	59
5.17	Hazardous substances .....	60
5.18	Workshop, equipment maintenance and storage.....	67
5.19	Batching plants.....	68
5.20	Dust emissions .....	71
5.21	Blasting.....	73
5.22	Noise .....	74
5.23	Fire prevention .....	75
5.24	Stockpiling and stockpile areas.....	76
5.25	Finalising tower positions.....	78
5.26	Excavation and Installation of foundations .....	79
5.27	Assembly and erecting towers .....	81
5.28	Stringing.....	86
5.29	Socio-economic .....	89
5.30	Temporary closure of site .....	91
5.31	Landscaping and rehabilitation.....	94
6	ACCESS TO THE GENERIC EMPr.....	97
PART B: SECTION 2 .....		98
7	SITE SPECIFIC INFORMATION AND DECLARATION.....	98
7.1	Sub-section 1: contact details and description of the project .....	98
7.2	Sub-section 2: Development footprint site map .....	101
7.3	Sub-section 3: Declaration.....	116

7.4	Sub-section 4: amendments to site specific information (Part B; section 2) .....	116
	PART C .....	117
8	SITE SPECIFIC ENVIRONMENTAL ATTRIBUTES .....	117
	APPENDIX 1: METHOD STATEMENTS.....	122

**List of figures**

Figure 1: Example of an environmental sensitivity map in the context of a final overhead transmission and distribution profile .....	109
--	-----

**List of tables**

Table 1: Guide to roles and responsibilities for implementation of an EMPr .....	8
--	---

## **INTRODUCTION**

### **1. Background**

The National Environmental Management Act, 1998 (Act No. 107 of 1998) (NEMA) requires that an environmental management programme (EMPr) be submitted where an environmental impact assessment (EIA) has been identified as the environmental instrument to be utilised as the basis for a decision on an application for environmental authorisation (EA). The content of an EMPr must either contain the information set out in Appendix 4 of the Environmental Impact Assessment Regulations, 2014, as amended, (EIA Regulations) or must be a generic EMPr relevant to an application as identified and gazetted by the Minister in a government notice. Once the Minister has identified, through a government notice, that a generic EMPr is relevant to an application for EA, that generic EMPr must be applied by all parties involved in the EA process, including, but not limited to, the applicant and the competent authority (CA).

### **2. Purpose**

This document constitutes a generic EMPr relevant to applications for the development or expansion of overhead electricity transmission and distribution infrastructure, and all listed and specified activities necessary for the realisation of such infrastructure.

### **3. Objective**

The objective of this generic EMPr is to prescribe and pre-approve generally accepted impact management outcomes and impact management actions, which can commonly and repeatedly be used for the avoidance, management and mitigation of impacts and risks associated with the development or expansion of overhead electricity transmission and distribution infrastructure. The use of a generic EMPr is intended to reduce the need to prepare and review individual EMPrs for applications of a similar nature.

### **4. Scope**

The scope of this generic EMPr applies to the development or expansion of overhead electricity transmission and distribution infrastructure requiring EA in terms of NEMA, i.e. with a capacity of 33 kilovolts or more. This generic EMPr applies to activities requiring EA, mainly activity 11 and 47 of the Environmental Impact Assessment Regulations Listing Notice 1 of 2014, as amended, and activity 9 of the Environmental Impact Assessment Regulations Listing Notice 2 of 2014, as amended, and all associated listed or specified activities necessary for the realisation of such infrastructure.

## 5. Structure of this document

This document is structured in three parts with an Appendix as indicated in the table below:

Part	Section	Heading	Content
A		Provides general guidance and information and is <b>not legally binding</b>	Definitions, acronyms, roles & responsibilities and documentation and reporting.
B	1	Pre-approved generic EMPr template	<p>Contains generally accepted impact management outcomes and impact management actions required for the avoidance, management and mitigation of impacts and risks associated with the development or expansion of overhead electricity transmission and distribution infrastructure, which are presented in the form of a template that has been pre-approved.</p> <p>The template in this section is to be completed by the contractor, with each completed page signed and dated by the holder of the EA prior to commencement of the activity.</p> <p>Where an impact management outcome is not relevant, the words "not applicable" can be inserted in the template under the "responsible persons" column.</p> <p>Once completed and signed, the template represents the EMPr for the activity approved by the CA and is legally binding. The template <b>is not required</b> to be submitted to the CA as once the generic EMPr is gazetted for implementation, it has been approved by the CA.</p> <p>To allow interested and affected parties access to the pre-approved EMPr template for consideration through the decision-making process, the EAP on behalf of the applicant /proponent must make the hard copy of this EMPr available at a public location and where the applicant has a website, the EMPr should also be made available on such publicly accessible website.</p>
	2	Site specific information	Contains preliminary infrastructure layout and a declaration that the applicant/holder of the EA will comply with the pre-approved generic EMPr template contained in <u>Part B: Section 1</u> , and understands that the impact management

Part	Section	Heading	Content
			<p>outcomes and impact management actions are <b>legally binding</b>. The preliminary infrastructure layout must be finalized to inform the final EMPr that is to be submitted with the basic assessment report (BAR) or environmental impact assessment report (EIAR), ensuring that all impact management outcomes and actions have been either pre-approved or approved in terms of <u>Part C</u>.</p> <p>This section <b>must be</b> submitted to the CA together with the final BAR or EIAR. The information submitted to the CA will be considered to be incomplete should a signed copy of <u>Part B: section 2</u> not be submitted. Once approved, this Section forms part of the EMPr for the development and is legally binding.</p>
C		Site specific sensitivities/ attributes	<p>If any specific environmental sensitivities/ attributes are present on the site which require site specific impact management outcomes and impact management actions, not included in the pre-approved generic EMPr, to manage impacts, these specific impact management outcomes and impact management actions must be included in this section. These specific environmental attributes must be referenced spatially and impact management outcomes and impact management actions must be provided. These specific impact management outcomes and impact management actions must be presented in the format of the pre-approved EMPr template (<u>Part B: section 1</u>)</p> <p>This section will not be required should the site contain no specific environmental sensitivities or attributes. However, if <u>Part C</u> is applicable to the site, it <b>is required</b> to be submitted together with the BAR or EIAR, for consideration of, and decision on, the application for EA. The information in this section must be prepared by an EAP, and must contain his/her name and expertise including a curriculum vitae. Once approved, Part C forms part of the EMPr for the site and is legally binding.</p> <p>This section applies only <b>to additional</b> impact management outcomes and impact</p>

Part	Section	Heading	Content
			management actions that are necessary for the avoidance, management and mitigation of impacts and risks associated with the specific development or expansion and which are not already included in <u>Part B: section 1</u> .
	Appendix 1		Contains the method statements to be prepared prior to commencement of the activity. The method statements are <b>not required</b> to be submitted to the competent authority.

## 6. Completion of part B: section 1: the pre-approved generic EMPr template

The template is to be completed prior to commencement of the activity, by providing the following information for each environmental impact management action:

- For implementation
  - a 'responsible person',
  - a method for implementation,
  - a timeframe for implementation
- For monitoring
  - a responsible person
  - frequency
  - evidence of compliance.

The completed template must be signed and dated by the holder of the EA prior to commencement of the activity. The method statements prepared and agreed to by the holder of the EA must be appended to the template as Appendix 1. Each method statement must be signed and dated on each page by the holder of the EA. This template, once signed and dated, is legally binding. The holder of the EA will remain responsible for its implementation.

## 7. Amendments of the impact management outcomes and impact management actions

Once the activity has commenced, a holder of an EA may make amendments to the impact management outcomes and impact management actions in the following manner:

- Amendment of the impact management outcomes: in line with the process contemplated in regulation 37 of the EIA Regulations; and
- Amendment of the impact management actions: in line with the process contemplated in regulation 36 of the EIA Regulations.

## 8. Documents to be submitted as part of part B: section 2 site specific information and declaration

Part B: Section 2 has three distinct sub-sections. The first and third sub-sections are in a template format. Sub-section two requires a map to be produced.



Sub-section 1 contains the project name, the applicant's name and contact details, the site information, which includes coordinates of the corridor in which the proposed overhead electricity transmission and distribution infrastructure is proposed as well as the 21-digit Surveyor General code of each cadastral land parcel and, where available, the farm name.

Sub-section 2 is to be prepared by an EAP and must contain his/her name and expertise including a curriculum vitae. This sub-section must include a map of the site sensitivity overlaid with the preliminary infrastructure layout using the national web based environmental screening tool, when available for compulsory use at: <https://screening.environment.gov.za/screeningtool>. The sensitivity map shall identify the nature of each sensitive feature e.g. raptor nest, threatened plant species, archaeological site, etc. Sensitivity maps must identify features both within the planned working area and any known sensitive features in the surrounding landscape within 50m from the development footprint. The overhead transmission and distribution profile must be illustrated at an appropriate resolution to enable fine scale interrogation. It is recommended that <20 km of overhead transmission and distribution length is illustrated per page in A3 landscape format. Where considered appropriate, photographs of sensitive features in the context of tower positions must be used.

Sub-section 3 is the declaration that the applicant/proponent or holder of the EA in the case of a change of ownership must complete, which confirms that the applicant/EA holder will comply with the pre-approved generic EMPr template in Section 1 and understands that the impact management outcomes and actions are legally binding.

#### **(a) Amendments to Part B: Section 2 – site specific information and declaration**

Should the EA be transferred, Part B: Section 2 must be completed by the new applicant/proponent and submitted with the application for an amendment of the EA in terms of Regulations 29 or 31 of the EIA Regulations, whichever applies. The information submitted as part of such an application for an amendment to an EA will be considered to be incomplete should a signed copy of Part B: Section 2 not be submitted. Once approved, Part B: Section 2 forms part of the EMPr for the development and the EMPr becomes legally binding to the new EA holder.

## PART A – GENERAL INFORMATION

### 1. DEFINITIONS

In this EMPr any word or expression to which a meaning has been assigned in the NEMA or EIA Regulations has that meaning, and unless the context requires otherwise –

**"clearing"** means the clearing and removal of vegetation, whether partially or in whole, including trees and shrubs, as specified;

**"construction camp"** is the area designated for key construction infrastructure and services, including but not limited to offices, overnight vehicle parking areas, stores, the workshop, stockpile and lay down areas, hazardous storage areas (including fuels), the batching plant (if one is located at the construction camp), designated access routes, equipment cleaning areas and the placement of staff accommodation, cooking and ablution facilities, waste and wastewater management;

**"contractor"** - The Contractor has overall responsibility for ensuring that all work, activities, and actions linked to the delivery of the contract, are in line with the Environmental Management Programme and that Method Statements are implemented as described.

**"hazardous substance"** is a substance governed by the Hazardous Substances Act, 1973 (Act No. 15 of 1973) as well as the Hazardous Chemical and Substances Regulations, 1995;

**"method statement"** means a written submission by the Contractor to the Project Manager in response to this EMPr or a request by the Project Manager and ECO. The method statement must set out the equipment, materials, labour and method(s) the Contractor proposes using to carry out an activity identified by the Project Manager when requesting the Method Statement. This must be done in such detail that the Project Manager and ECO is able to assess whether the Contractor's proposal is in accordance with this specification and/or will produce results in accordance with this specification;

The method statement must cover applicable details with regard to:

- (i) Construction procedures;
- (ii) Plant, materials and equipment to be used;
- (iii) Transporting the equipment to and from site;
- (iv) How the plant/ material/ equipment will be moved while on site;
- (v) How and where the plant/ material/ equipment will be stored;
- (vi) The containment (or action to be taken if containment is not possible) of leaks or spills of any liquid or material that may occur;
- (vii) Timing and location of activities;
- (viii) Compliance/ non-compliance; and
- (ix) Any other information deemed necessary by the Project Manager.

**"slope"** means the inclination of a surface expressed as one unit of rise or fall for so many horizontal units;

**“solid waste”** means all solid waste, including construction debris, hazardous waste, excess cement/ concrete, wrapping materials, timber, cans, drums, wire, nails, food and domestic waste (e.g. plastic packets and wrappers);

**“spoil”** means excavated material which is unsuitable for use as material in the construction works or is material which is surplus to the requirements of the construction works;

**“topsoil”** means a varying depth (up to 300 mm) of the soil profile irrespective of the fertility, appearance, structure, agricultural potential, fertility and composition of the soil; and

**“works”** means the works to be executed in terms of the Contract

## 2. ACRONYMS and ABBREVIATIONS

<b>CA</b>	Competent Authority
<b>cEO</b>	Contractors Environmental Officer
<b>dEO</b>	Developer Environmental Officer
<b>DPM</b>	Developer Project Manager
<b>DSS</b>	Developer Site Supervisor
<b>EAR</b>	Environmental Audit Report
<b>ECA</b>	Environmental Conservation Act No. 73 of 1989
<b>ECO</b>	Environmental Control Officer
<b>EA</b>	Environmental Authorisation
<b>EIA</b>	Environmental Impact Assessment
<b>ERAP</b>	Emergency Response Action Plan
<b>EMPr</b>	Environmental Management Programme Report
<b>EAP</b>	Environmental Assessment Practitioner
<b>FPA</b>	Fire Protection Agency
<b>HCS</b>	Hazardous chemical Substance
<b>NEMA</b>	National Environmental Management Act, 1998 (Act No. 107 of 1998)
<b>NEMBA</b>	National Environmental Management: Biodiversity Act ,2004 (Act No. 10 of 2004)
<b>NEMWA</b>	National Environmental Management: Waste Act, 2008 (Act No. 59 of 2008)
<b>MSDS</b>	Material Safety Data Sheet
<b>RI&amp;AP's</b>	Registered interested and affected parties

### 3. ROLES AND RESPONSIBILITIES FOR ENVIRONMENTAL MANAGEMENT PROGRAMME (EMPr) IMPLEMENTATION

The effective implementation of this generic EMPr is dependent on established and clear roles, responsibilities and reporting lines within an institutional framework. This section of the EMPr gives guidance to the various environmental roles and reporting lines, however, project specific requirements will ultimately determine the need for the appointment of specific person(s) to undertake specific roles and or responsibilities. As such, it must be noted that in the event that no specific person, for example, an environmental control officer (ECO) is appointed, the holder of the EA remains responsible for ensuring that the duties indicated in this document for action by the ECO are undertaken.

**Table 1:** Guide to roles and responsibilities for implementation of an EMPr

Responsible Person (s)	Role and Responsibilities
Developer's Project Manager (DPM)	<p><u>Role</u></p> <p>The Project Developer is accountable for ensuring compliance with the EMPr and any conditions of approval from the competent authority (CA). Where required, an environmental control officer (ECO) must be contracted by the Project Developer to objectively monitor the implementation of the EMPr according to relevant environmental legislation, and the conditions of the environmental authorisation (EA). The Project Developer is further responsible for providing and giving mandate to enable the ECO to perform responsibilities, and he must ensure that the ECO is integrated as part of the project team while remaining independent.</p> <p><u>Responsibilities</u></p> <ul style="list-style-type: none"> <li>- Be fully conversant with the conditions of the EA;</li> <li>- Ensure that all stipulations within the EMPr are communicated and adhered to by the Developer and its Contractor(s);</li> <li>- Issuing of site instructions to the Contractor for corrective actions required;</li> <li>- Monitor the implementation of the EMPr throughout the project by means of site inspections and meetings. Overall management of the project and EMPr implementation; and</li> <li>- Ensure that periodic environmental performance audits are undertaken on the project implementation.</li> </ul>
Developer Site Supervisor (DSS)	<u>Role</u>

Responsible Person (s)	Role and Responsibilities
	<p>The DSS reports directly to the DPM, oversees site works, liaises with the contractor(s) and the ECO. The DSS is responsible for the day to day implementation of the EMPr and for ensuring the compliance of all contractors with the conditions and requirements stipulated in the EMPr.</p> <p><u>Responsibilities</u></p> <ul style="list-style-type: none"> <li>- Ensure that all contractors identify a contractor's Environmental Officer (cEO);</li> <li>- Must be fully conversant with the conditions of the EA. Oversees site works, liaison with Contractor, DPM and ECO;</li> <li>- Must ensure that all landowners have the relevant contact details of the site staff, ECO and cEO;</li> <li>- Issuing of site instructions to the Contractor for corrective actions required;</li> <li>- Will issue all non-compliances to contractors; and</li> <li>- Ratify the Monthly Environmental Report.</li> </ul>
Environmental Control Officer (ECO)	<p><u>Role</u></p> <p>The ECO should have appropriate training and experience in the implementation of environmental management specifications. The primary role of the ECO is to act as an independent quality controller and monitoring agent regarding all environmental concerns and associated environmental impacts. In this respect, the ECO is to conduct periodic site inspections, attend regular site meetings, pre-empt problems and suggest mitigation and be available to advise on incidental issues that arise. The ECO is also required to conduct compliance audits, verifying the monitoring reports submitted by the cEO. The ECO provides feedback to the DSS and Project Manager regarding all environmental matters. The Contractor, cEO and dEO are answerable to the Environmental Control Officer for non-compliance with the Performance Specifications as set out in the EA and EMPr.</p> <p>The ECO provides feedback to the DSS and Project Manager, who in turn reports back to the Contractor and potential and Registered Interested &amp; Affected Parties' (RI&amp;AP's), as required. Issues of non-compliance raised by the ECO must be taken up by the Project Manager, and resolved with the Contractor as per the conditions of his contract. Decisions regarding environmental procedures, specifications and requirements which have a cost implication (i.e. those that are deemed to be a variation, not allowed for in the Performance Specification) must be endorsed by the Project Manager. The ECO must also, as specified by the EA, report to the relevant CA as and when required.</p>

Responsible Person (s)	Role and Responsibilities
	<p><u>Responsibilities</u></p> <p>The responsibilities of the ECO will include the following:</p> <ul style="list-style-type: none"> <li>- Be aware of the findings and conclusions of all EA related to the development;</li> <li>- Be familiar with the recommendations and mitigation measures of this EMPr;</li> <li>- Be conversant with relevant environmental legislation, policies and procedures, and ensure compliance with them;</li> <li>- Undertake regular and comprehensive site inspections / audits of the construction site according to the generic EMPr and applicable licenses in order to monitor compliance as required;</li> <li>- Educate the construction team about the management measures contained in the EMPr and environmental licenses;</li> <li>- Compilation and administration of an environmental monitoring plan to ensure that the environmental management measures are implemented and are effective;</li> <li>- Monitoring the performance of the Contractors and ensuring compliance with the EMPr and associated Method Statements;</li> <li>- In consultation with the Developer Site Supervisor order the removal of person(s) and/or equipment which are in contravention of the specifications of the EMPr and/or environmental licenses;</li> <li>- Liaison between the DPM, Contractors, authorities and other lead stakeholders on all environmental concerns;</li> <li>- Compile a regular environmental audit report highlighting any non-compliance issues as well as satisfactory or exceptional compliance with the EMPr;</li> <li>- Validating the regular site inspection reports, which are to be prepared by the contractor Environmental Officer (cEO);</li> <li>- Checking the cEO's record of environmental incidents (spills, impacts, legal transgressions etc) as well as corrective and preventive actions taken;</li> <li>- Checking the cEO's public complaints register in which all complaints are recorded, as well as action taken;</li> <li>- Assisting in the resolution of conflicts;</li> <li>- Facilitate training for all personnel on the site – this may range from carrying out the training, to reviewing the training programmes of the Contractor;</li> <li>- In case of non-compliances, the ECO must first communicate this to the Senior Site Supervisor, who has the power to ensure this matter is addressed. Should no action or insufficient action be taken, the ECO may report this matter to the authorities as non-compliance;</li> <li>- Maintenance, update and review of the EMPr;</li> <li>- Communication of all modifications to the EMPr to the relevant stakeholders.</li> </ul>

Responsible Person (s)	Role and Responsibilities
<p>developer Environmental Officer (dEO)</p>	<p><u>Role</u></p> <p>The dEOs will report to the Project Manager and are responsible for implementation of the EMPr, environmental monitoring and reporting, providing environmental input to the Project Manager and Contractor's Manager, liaising with contractors and the landowners as well as a range of environmental coordination responsibilities.</p> <p><u>Responsibilities</u></p> <ul style="list-style-type: none"> <li>- Be fully conversant with the EMPr;</li> <li>- Be familiar with the recommendations and mitigation measures of this EMPr, and implement these measures;</li> <li>- Ensure that all stipulations within the EMPr are communicated and adhered to by the Employees, Contractor(s) ;</li> <li>- Confine the development site to the demarcated area;</li> <li>- Conduct environmental internal audits with regards to EMPr and authorisation compliance (on cEO);</li> <li>- Assist the contractors in addressing environmental challenges on site;</li> <li>- Assist in incident management:</li> <li>- Reporting environmental incidents to developer and ensuring that corrective action is taken, and lessons learnt shared;</li> <li>- Assist the contractor in investigating environmental incidents and compile investigation reports;</li> <li>- Follow-up on pre-warnings, defects, non-conformance reports;</li> <li>- Measure and communicate environmental performance to the Contractor;</li> <li>- Conduct environmental awareness training on site together with ECO and cEO;</li> <li>- Ensure that the necessary legal permits and / or licenses are in place and up to date;</li> <li>- Acting as Developer's Environmental Representative on site and work together with the ECO and contractor;</li> </ul>
<p>Contractor</p>	<p><u>Role</u></p> <p>The Contractor appoints the cEO and has overall responsibility for ensuring that all work, activities, and actions linked to the delivery of the contract are in line with the EMPr and that Method Statements are implemented as described. External contractors must ensure compliance with this EMPr while performing the onsite activities as per their contract with the Project Developer. The contractors are required, where</p>

Responsible Person (s)	Role and Responsibilities
	<p>specified, to provide Method Statements setting out in detail how the impact management actions contained in the EMPr will be implemented during the development or expansion for overhead electricity transmission and distribution infrastructure activities.</p> <p><u>Responsibilities</u></p> <ul style="list-style-type: none"> <li>- project delivery and quality control for the development services as per appointment;</li> <li>- employ a suitably qualified person to monitor and report to the Project Developer's appointed person on the daily activities on-site during the construction period;</li> <li>- ensure that safe, environmentally acceptable working methods and practices are implemented and that equipment is properly operated and maintained, to facilitate proper access and enable any operation to be carried out safely;</li> <li>- attend on site meeting(s) prior to the commencement of activities to confirm the procedure and designated activity zones;</li> <li>- ensure that contractors' staff repair, at their own cost, any environmental damage as a result of a contravention of the specifications contained in EMPr, to the satisfaction of the ECO.</li> </ul>
contractor Environmental Officer (cEO)	<p><u>Role</u></p> <p>Each Contractor affected by the EMPr should appoint a cEO, who is responsible for the on-site implementation of the EMPr (or relevant sections of the EMPr). The Contractor's representative can be the site agent; site engineer; a dedicated environmental officer; or an independent consultant. The Contractor must ensure that the Contractor's Representative is suitably qualified to perform the necessary tasks and is appointed at a level such that she/he can interact effectively with other site Contractors, labourers, the Environmental Control Officer and the public. As a minimum the cEO shall meet the following criteria:</p> <p><u>Responsibilities</u></p> <ul style="list-style-type: none"> <li>- Be on site throughout the duration of the project and be dedicated to the project;</li> <li>- Ensure all their staff are aware of the environmental requirements, conditions and constraints with respect to all of their activities on site;</li> <li>- Implementing the environmental conditions, guidelines and requirements as stipulated within the EA, EMPr and Method Statements;</li> <li>- Attend the Environmental Site Meeting;</li> </ul>



Responsible Person (s)	Role and Responsibilities
	<ul style="list-style-type: none"> <li>- Undertaking corrective actions where non-compliances are registered within the stipulated timeframes;</li> <li>- Report back formally on the completion of corrective actions;</li> <li>- Assist the ECO in maintaining all the site documentation;</li> <li>- Prepare the site inspection reports and corrective action reports for submission to the ECO;</li> <li>- Assist the ECO with the preparing of the monthly report; and</li> <li>- Where more than one Contractor is undertaking work on site, each company appointed as a Contractor will appoint a cEO representing that company.</li> </ul>

## 4. ENVIRONMENTAL DOCUMENTATION REPORTING AND COMPLIANCE

To ensure accountable and demonstrated implementation of the EMPr, a number of reporting systems, documentation controls and compliance mechanisms must be in place for all overhead electricity transmission and distribution infrastructure projects as a minimum requirement.

### 4.1 Document control/Filing system

The holder of the EA is solely responsible for the upkeep and management of the EMPr file. At a minimum, all documentation detailed below will be stored in the EMPr file. A hard copy of all documentation shall be filed, while an electronic copy may be kept where relevant. A duplicate file will be maintained in the office of the DSS (where applicable). This duplicate file must remain current and up-to-date. The filing system must be updated and relevant documents added as required. The EMPr file must be made available at all times on request by the CA or other relevant authorities. The EMPr file will form part of any environmental audits undertaken as prescribed in the EIA Regulations.

### 4.2 Documentation to be available

At the outset of the project the following preliminary list of documents shall be placed in the filing system and be accessible at all times:

- Full copy of the signed EA from the CA in terms of NEMA, granting approval for the development or expansion;
- Copy of the generic and site specific EMPr as well as any amendments thereof;
- Copy of declaration of implementing generic EMPr and subsequent approval of site specific EMPr and amendments thereof;
- All method statements;
- Completed environmental checklists;
- Minutes and attendance register of environmental site meetings;
- An up-to-date environmental incident log;
- A copy of all instructions or directives issued;
- A copy of all corrective actions signed off. The corrective actions must be filed in such a way that a clear reference is made to the non-compliance record;
- Complaints register.

### 4.3 Weekly Environmental Checklist

The ECOs are required to complete a Weekly Environmental Checklist, the format of which is to be agreed prior to commencement of the activity. The ECOs are required to sign and date the checklist, retain a copy in the EMPr file and submit a copy of the completed checklist to the DSS on a weekly basis.

The checklists will form the basis for the Monthly Environmental Reports. Copies of all completed checklists will be attached as Annexures to the Environmental Audit Report as required in terms of the EIA Regulations.

#### 4.4 Environmental site meetings

Minutes of the environmental site meetings shall be kept. The minutes must include an attendance register and will be attached to the Monthly Report that is distributed to attendees. Each set of minutes must clearly record "Matters for Attention" that will be reviewed at the next meeting.

#### 4.5 Required Method Statements

The method statement will be done in such detail that the ECOs are enabled to assess whether the contractor's proposal is in accordance with the EMPr.

The method statement must cover applicable details with regard to:

- development procedures;
- materials and equipment to be used;
- getting the equipment to and from site;
- how the equipment/ material will be moved while on site;
- how and where material will be stored;
- the containment (or action to be taken if containment is not possible) of leaks or spills of any liquid or material that may occur;
- timing and location of activities;
- compliance/ non-compliance with the EMPr; and
- any other information deemed necessary by the ECOs.

Unless indicated otherwise by the Project Manager, the Contractor shall provide the following method statements to the Project Manager no less than 14 days prior to the commencement date of the activity:

- Site establishment – Camps, Lay-down or storage areas, satellite camps, infrastructure;
- Batch plants;
- Workshop or plant servicing;
- Handling, transport and storage of Hazardous Chemical Substance's;
- Vegetation management – Protected, clearing, aliens, felling;
- Access management – Roads, gates, crossings etc.;
- Fire plan;
- Waste management – transport, storage, segregation, classification, disposal (all waste streams);
- Social interaction – complaints management, compensation claims, access to properties etc.;
- Water – use (source, abstraction and disposal), access and all related information, crossings and mitigation;
- Emergency preparedness – Spills, training, other environmental emergencies;
- Dust and noise management methodologies;
- Fauna interaction and risk management – only if the risk was identified – wildlife interaction especially on game farms; and
- Heritage and palaeontology management.

The ECOs shall monitor and ensure that the contractors perform in accordance with these method statements. Completed and agreed method statements between the holder of the EA and the contractor shall be captured in Appendix 1.

#### 4.6 Environmental Incident Log (Diary)

The ECOs are required to maintain an up-to-date and current Environmental Incident Log (environmental diary). The Environmental Incident Log is a means to record all environmental incidents and/or all non-compliance notice would not be issued. An environmental incident is defined as:

- Any deviation from the listed impact management actions (listed in this EMPr) that may be addressed immediately by the ECOs. (For example a contractor's staff member littering or a drip tray that has not been emptied);
- Any environmental impact resulting from an action or activity by a contractor in contravention of the environmental stipulations and guidelines listed in the EMPr which as a single event would have a minor impact but which if cumulative and continuous would have a significant effect (for example no toilet paper available in the ablutions for an afternoon); and
- General environmental information such as road kills or injured wildlife.

The ECOs are to record all environmental incidents in the Environmental Incident Log. All incidents regardless of severity must be reported to the Developer. The Log is to be kept in the EMPr file and at a minimum the following will be recorded for each environmental incident:

- The date and time of the incident;
- Description of the incident;
- The name of the Contractor responsible;
- The incident must be listed as significant or minor;
- If the incident is listed as significant, a non-compliance notice must be issued, and recorded in the log;
- Remedial or corrective action taken to mitigate the incident; and
- Record of repeat minor offences by the same contractor or staff member.

The Environmental Incident Log will be captured in the EAR.

#### 4.7 Non-compliance

A non-compliance notice will be issued to the responsible contractor by the ECOs via the DSS or Project Manager. The non-compliance notice will be issued in writing; a copy filed in the EMPr file and will at a minimum include the following:

- Time and date of the non-compliance;
- Name of the contractor responsible;
- Nature and description of the non-compliance;
- Recommended / required corrective action; and
- Date by which the corrective action to be completed.
- The contractors shall act immediately when a notice of non-compliance is received and correct whatever is the cause for the issuing of the notice. Complaints received regarding activities on the development site pertaining to the environment shall be

recorded in a dedicated register and the response noted with the date and action taken. The ECO should be made aware of any complaints. Any non-compliance with the agreed procedures of the EMPr is a transgression of the various statutes and laws that define the manner by which the environment is managed. Failure to redress the cause shall be reported to the relevant CA for them to deal with the transgression, as it deems fit. The contractor is deemed not to have complied with the EMPr if, inter alia, There is a deviation from the environmental conditions, impact management outcomes and impact management actions , as approved in generic and site specific EMPr as relevant as set out in the EMPr, which deviation has, or may cause, an environmental impact.

#### 4.8 Corrective action records

For each non-compliance notice issued, a documented corrective action must be recorded. On receiving a non-compliance notice from the DSS, the contractor's cEO will ensure that the corrective actions required take place within the stipulated timeframe. On completion of the corrective action the cEO is to issue a Corrective Action Report in writing to the ECOs. If satisfied that the corrective action has been completed, the ECOs are to sign-off on the Corrective Action Report, and attach the report to the non-compliance notice in the EMPr file. A corrective action is considered complete once the report has signed off by the ECOs.

#### 4.9 Photographic record

A digital photographic record will be kept. The photographic record will be used to show before, during and post rehabilitation evidence of the project as well used in cases of damages claims if they arise. Each image must be dated and a brief description note attached.

The Contractor shall:

1. Allow the ECOs access to take photographs of all areas, activities and actions.

The ECOs shall keep an electronic database of photographic records which will include:

1. Pictures of all areas designated as work areas, camp areas, development sites and storage areas taken before these areas are set up;
2. All bunding and fencing;
3. Road conditions and road verges;
4. Condition of all farm fences;
5. Topsoil storage areas;
6. All areas to be cordoned off during construction;
7. Waste management sites;
8. Ablution facilities (inside and out);
9. Any non-conformances deemed to be "significant";
10. All completed corrective actions for non-compliances;
11. All required signage;
12. Photographic recordings of incidents;
13. All areas before, during and post rehabilitation; and
14. Include relevant photographs in the Final Environmental Audit Report.

#### 4.10 Complaints register

The ECOs shall keep a current and up-to-date complaints register. The complaints register is to be a record of all complaints received from communities, stakeholders and individuals. The Complaints Record shall:

1. Record the name and contact details of the complainant;
2. Record the time and date of the complaint;
3. Contain a detailed description of the complaint;
4. Where relevant and appropriate, contain photographic evidence of the complaint or damage (ECOs to take relevant photographs); and
5. Contain a copy of the ECOs written response to each complaint received and keep a record of any further correspondence with the complainant. The ECO's written response will include a description of any corrective action to be taken and must be signed by the Contractor, ECO and affected party. Where a damage claim is issued by the complainant, the ECOs shall respond as described in **(section 4.11)** below.

#### 4.11 Claims for damages

In the event that a Claim for Damages is submitted by a community, landowner or individual, the ECOs shall:

1. Record the full detail of the complaint as described in **(section 4.10)** above;
2. The DPM will evaluate the claim and associated damage and submit the evaluation to the Senior Site Representative for approval;
3. Following consideration by the DPM, the claim is to be resolved and settled immediately, or the reason for not accepting the claim communicated in writing to the claimant. Should the claimant not accept this, the ECO shall, in writing report the incident to the Developer's negotiator and legal department; and
4. A formal record of the response by the ECOs to the claimant as well as the rectification of the method of making payments not amount will be recorded in the EMPr file.

#### 4.12 Interactions with affected parties

Open, transparent and good relations with affected landowners, communities and regional staff are an essential aspect to the successful management and mitigation of environmental impacts.

The ECOs shall:

1. Ensure that all queries, complaints and claims are dealt within an agreed timeframe;
2. Ensure that any or all agreements are documented, signed by all parties and a record of the agreement kept in the EMPr file;
3. Ensure that a complaints telephone numbers are made available to all landowners and affected parties; and
4. Ensure that contact with affected parties is courteous at all times;

#### 4.13 Environmental audits

Internal environmental audits of the activity and implementation of the EMPr must be undertaken. The findings and outcomes must be included in the EMPr file and be submitted to the CA at intervals as indicated in the EA.

An Environmental Audit Report must be prepared monthly. The report will be tabled as the key point on the agenda of the Environmental Site Meeting. The Report is submitted for acceptance at the meeting and the final report will be circulated to the Project Manager and filed in the EMPr file. At a frequency determined by the EA, the ECOs shall submit the monthly reports to the CA. At a minimum the monthly report is to cover the following:

- Weekly Environmental Checklists;
- Deviations and non-compliances with the checklists;
- Non-compliances issued;
- Completed and reported corrective actions;
- Environmental Monitoring;
- General environmental findings and actions; and
- Minutes of the Bi-monthly Environmental Site Meetings.

#### 4.14 Final environmental audits

On final completion of the rehabilitation and/or requirements of the EA a final EAR is to be prepared and submitted to the CA. The EAR must comply with Appendix 7 of the EIA Regulations.

## **PART B: SECTION 1: Pre-approved generic EMPr template**

### **5. IMPACT MANAGEMENT OUTCOMES AND IMPACT MANAGEMENT ACTIONS**

This section provides a pre-approved generic EMPr template with aspects that are common to the development of overhead electricity transmission and distribution infrastructure. There is a list of aspects identified for the development or expansion of overhead electricity transmission and distribution infrastructure, and for each aspect a set of prescribed impact management outcomes and associated impact management actions have been identified. Holders of EAs are responsible to ensure the implementation of these outcomes and actions for all projects as a minimum requirement, in order to mitigate the impact of such aspects identified for the development or expansion of overhead electricity transmission and distribution infrastructure.

The template provided below is to be completed by providing the information under each heading for each environmental impact management action.

The completed template must be signed and dated on each page by both the contractor and the holder of the EA prior to commencement of the activity. The method statements prepared and agreed to by the holder of the EA must be appended to the template as Appendix 1. Each method statement must also be duly signed and dated on each page by the contractor and the holder of the EA. This template, once signed and dated, is legally binding. The holder of the EA will remain responsible for its implementation.



## 5.1 Environmental awareness training

**Impact management outcome:** All onsite staff are aware and understands the individual responsibilities in terms of this EMPr.

Impact Management Actions	Implementation			Monitoring		
	Responsible person	Method of implementation	Timeframe for implementation	Responsible person	Frequency	Evidence of compliance
– All staff must receive environmental awareness training prior to commencement of the activities;	ECO / cEO / dEO	Hold environmental awareness training workshops	Pre-construction Construction	ECO dEO	Monthly and as and when required	Attendance register and training minutes / notes for the record
– The Contractor must allow for sufficient sessions to train all personnel with no more than 20 personnel attending each course;	Contractor	Scheduling of sufficient sessions through consultation with the ECO / cEO / dEO	Pre-construction Construction	ECO dEO	Monthly and as and when required	Attendance register and training minutes / notes for the record
– Refresher environmental awareness training is available as and when required;	cEO / dEO in consultation with the ECO	Hold refresher environmental awareness training workshops	During the Construction phase	ECO dEO	Monthly and as and when required	Attendance register and training minutes / notes for the record
– All staff are aware of the conditions and controls linked to the EA and within the EMPr and made aware of their individual roles and responsibilities in achieving compliance with the EA and EMPr;	cEO / dEO	Hold training Workshops and ensure that the EA and EMPr is readily available	During the Construction phase	ECO dEO	Monthly and as and when required	Attendance register and training minutes / notes for the record

<ul style="list-style-type: none"> <li>- The Contractor must erect and maintain information posters at key locations on site, and the posters must include the following information as a minimum: a) Safety notifications; and b) No littering.</li> </ul>	Contractor	Develop and place appropriate posters at key locations	Pre-construction Construction	ECO dEO cEO	Monthly	Photographic record
<ul style="list-style-type: none"> <li>- Environmental awareness training must include as a minimum the following: <ul style="list-style-type: none"> <li>a) Description of significant environmental impacts, actual or potential, related to their work activities;</li> <li>b) Mitigation measures to be implemented when carrying out specific activities;</li> <li>c) Emergency preparedness and response procedures;</li> <li>d) Emergency procedures;</li> <li>e) Procedures to be followed when working near or within sensitive areas;</li> <li>f) Wastewater management procedures;</li> <li>g) Water usage and conservation;</li> <li>h) Solid waste management procedures;</li> <li>i) Sanitation procedures;</li> <li>j) Fire prevention; and</li> <li>k) Disease prevention.</li> </ul> </li> </ul>	cEO / dEO in consultation with the ECO	Develop environmental awareness training material which covers the minimum requirements	Pre-construction Construction	ECO dEO	Prior to the commencement of the environmental awareness training	Environmental awareness training material requirements checklist
<ul style="list-style-type: none"> <li>- A record of all environmental awareness training courses undertaken as part of the EMPr must be available;</li> </ul>	ECO / cEO / dEO	Filing system including all proof of training (i.e. attendance register and training minutes / notes for the record)	During the construction phase	ECO dEO	Monthly	Completed and up to date filing system with proof of training
<ul style="list-style-type: none"> <li>- Educate workers on the dangers of open and/or unattended fires;</li> </ul>	cEO / dEO in consultation with the ECO	Develop environmental awareness training material	Pre-construction Construction	ECO dEO	Prior to the commencement of the environmental	Environmental awareness training material

		which covers the dangers of open and/or unattended fire			awareness training	requirements checklist
- A staff attendance register of all staff to have received environmental awareness training must be available.	ECO / cEO / dEO	Filing system including all proof of training (i.e. attendance register)	During the construction phase	ECO dEO	Monthly	Completed and up to date filing system inclusive of all attendance registers
- Course material must be available and presented in appropriate languages that all staff can understand.	ECO / cEO / dEO	Develop environmental awareness training material in the required languages. Training material must be readily available to all staff.	During the construction phase	ECO dEO	Monthly	Environmental awareness training material requirements checklist and the training register which must indicate the language of the training

## 5.2 Site Establishment development

**Impact management outcome:** Impacts on the environment are minimised during site establishment and the development footprint are kept to demarcated development area.

Impact Management Actions	Implementation			Monitoring		
	Responsible person	Method of implementation	Timeframe for implementation	Responsible person	Frequency	Evidence of compliance
<ul style="list-style-type: none"> <li>A method statement must be provided by the contractor prior to any onsite activity that includes the layout of the construction camp in the form of a plan showing the location of key infrastructure and services (where applicable), including but not limited to offices, overnight vehicle parking areas, stores, the workshop, stockpile and lay down areas, hazardous materials storage areas (including fuels), the batching plant (if one is located at the construction camp), designated access routes, equipment cleaning areas and the placement of staff accommodation, cooking and ablution facilities, waste and wastewater management;</li> </ul>	Contractor	Development of an appropriate method statement	Pre-construction	ECO dEO	Once, prior to construction	Availability of the method statement which complies with the minimum requirement listed
<ul style="list-style-type: none"> <li>Location of camps must be within approved area to ensure that the site does not impact on sensitive areas identified in the environmental assessment or site walk through;</li> </ul>	DPM	Place construction camps outside of sensitive areas identified in the Basic Assessment Report	Pre-construction Construction	ECO dEO	Once, prior to construction	Availability of a layout and sensitivity map indicating avoidance of sensitive area.
<ul style="list-style-type: none"> <li>Sites must be located where possible on previously disturbed areas;</li> </ul>	DPM	Place site outside of the sensitive areas and within	Pre-construction	ECO dEO	Once, prior to construction	Availability of a layout and sensitivity map

		previously disturbed areas identified in the BA Report				indicating avoidance of sensitive areas and placement within disturbed areas.
- The camp must be fenced in accordance with Section 5.5: Fencing and gate installation; and	DPM	Design and implementation of fencing as per requirements of Section 5.5 of this EMPr.	Pre-construction & Construction	ECO dEO	Once, prior to construction and once during the construction of the fencing.	The camp is fenced in accordance with Section 5.5 of this EMPr.
- The use of existing accommodation for contractor staff, where possible, is encouraged.	Not applicable – the development of new accommodation is not proposed. Staff will be accommodated in the town of Lichtenburg.					

### 5.3 Access restricted areas

**Impact management outcome:** Access to restricted areas prevented.

Impact Management Actions	Implementation			Monitoring		
	Responsible person	Method of implementation	Timeframe for implementation	Responsible person	Frequency	Evidence of compliance
– Identification of access restricted areas is to be informed by the environmental assessment, site walk through and any additional areas identified during development;	dEO/cEO in consultation with ECO	Spatially demarcate access restricted areas informed by the BA Report	Pre- construction	ECO	Once, prior to construction	Access restricted areas are identified and provided a spatial format.
– Erect, demarcate and maintain a temporary barrier with clear signage around the perimeter of any access restricted area, colour coding could be used if appropriate; and	dEO/cEO in consultation with ECO	Erect appropriate temporary barriers around access restricted areas.	At the commencement and for the duration of the construction phase	ECO	Monthly	Access restricted areas are closed-off through temporary barriers and barriers are maintained to a sufficient standard.
– Unauthorised access and development related activity inside access restricted areas is prohibited.	Contractor / dEO / cEO	Erect appropriate temporary barriers around access restricted areas and provide clear signage of restricted status	During the construction phase	ECO	Monthly and as and when required	Photographic evidence and notes of compliance that no unauthorised access or activities has taken place

						within the access restricted areas.
--	--	--	--	--	--	-------------------------------------

#### 5.4 Access roads

**Impact management outcome:** Minimise impact to the environment through the planned and restricted movement of vehicles on site.

Impact Management Actions	Implementation			Monitoring		
	Responsible person	Method of implementation	Timeframe for implementation	Responsible person	Frequency	Evidence of compliance
- Access to the servitude and tower positions must be negotiated with the relevant landowner and must fall within the assessed and authorised area;	DPM	Undertake negotiations for access to the servitude and tower positions with landowners affected by the grid connection corridor.	Pre-construction Construction Operation	dEO	Ongoing throughout construction and operation	Proof of negotiations with affected landowners and requirement of access to the servitude and tower positions in the form of written and signed agreements.
- An access agreement must be formalised and signed by the DPM, Contractor and landowner before commencing with the activities;	DPM Contractor	Develop access agreements with the affected landowners. Ensure that agreements are approved and signed.	Pre-construction	dEO ECO	Once, prior to construction	Availability of approved and signed negotiations.

<ul style="list-style-type: none"> <li>- The access roads to tower positions must be signposted after access has been negotiated and before the commencement of the activities;</li> </ul>	Contractor	Develop and install signs to indicate access for the project.	Pre-construction	cEO/ ECO	Once, prior to construction	Photographic record of signposted access roads and GPS coordinates of where these are placed.
<ul style="list-style-type: none"> <li>- All private roads used for access to the servitude must be maintained and upon completion of the works, be left in at least the original condition</li> </ul>	Contractor	Undertake maintenance activities on private roads used for construction as degradation takes place.	During the construction phase	cEO/ECO	Weekly	Photographic record of the pre-construction condition and degradation of roads, and records of the implementation and effectiveness of maintenance activities.
<ul style="list-style-type: none"> <li>- All contractors must be made aware of all these access routes.</li> </ul>	dEO / cEO	Develop a map illustrating all access routes associated with the project and present and provide the map to all contractors.	Pre-construction Construction	ECO	Once, prior to construction	Access routes map readily available.
<ul style="list-style-type: none"> <li>- Any access route deviation from that in the written agreement must be closed and re-vegetated immediately, at the contractor's expense;</li> </ul>	Contractor	All access routes developed that are not in-line with the	Construction and Rehabilitation	ECO	Bi-weekly ( every two weeks)	Photographic record of the closure of



		access route agreements must be closed and rehabilitated to the pre-disturbance state.				access roads and revegetation.
- Maximum use of both existing servitudes and existing roads must be made to minimize further disturbance through the development of new roads;	Contractor (and Esko maintenance staff where relevant to operation)	Existing access routes to be used must be specified and the development of new roads must be avoided as far as possible.	Construction and operation	cEO Operation and maintenance team	Weekly	Implementation of the approved layout
- In circumstances where private roads must be used, the condition of the said roads must be recorded in accordance with section 4.9: photographic record; prior to use and the condition thereof agreed by the landowner, the DPM, and the contractor;	dEO / cEO	Record the conditions of private roads to be used (prior to use) as per requirements of section 4.9 and agree on the required condition of the roads with the landowner, DPM and contractor.	During the construction phase	ECO	Prior to the use of private roads	Photographic record and proof of the road conditions agreed upon with the relevant parties.
- Access roads in flattish areas must follow fence lines and tree belts to avoid fragmentation of vegetated areas or croplands	DPM and Contractor	Design access roads to follow fence lines and avoid vegetated areas.	Pre-construction	ECO	Once during the design and once prior to construction.	Implementation of the approved layout.
- Access roads must only be developed on pre-planned and approved roads.	Contractor	Construction of access roads only on pre-planned and approved access roads.	During the construction phase	ECO dEO	Once during design and weekly during construction of access roads	Implementation of approved layout.

## 5.5 Fencing and Gate installation

**Impact management outcome:** Minimise impact to the environment and ensure safe and controlled access to the site through the erection of fencing and gates where required.

Impact Management Actions	Implementation			Monitoring		
	Responsible person	Method of implementation	Timeframe for implementation	Responsible person	Frequency	Evidence of compliance
<ul style="list-style-type: none"> <li>Use existing gates provided to gain access to all parts of the area authorised for development, where possible;</li> </ul>	Contractor	Identify and inform all relevant staff of the existing gates to be used	Pre-construction & Construction	dEO	Monthly	Existing gates are utilized on a frequent basis and only limited new access gates are developed
<ul style="list-style-type: none"> <li>Existing and new gates to be recorded and documented in accordance with section 4.9: photographic record;</li> </ul>	ECO	Existing and new gates will be recorded and documented as per the requirements of section 4.9	During the construction phase	ECO	Once, when the construction of all new gates have been completed	Photographic record of the existing and new gates as per requirement of section 4.9
<ul style="list-style-type: none"> <li>All gates must be fitted with locks and be kept locked at all times during the development phase, unless otherwise agreed with the landowner;</li> </ul>	Contractor	Ensure all relevant gates are fitted with locks and are always locked	Construction and Operation	ECO Operation and maintenance team	Bi-weekly (every second week)	All gates are locked and no complaints from landowners

						are received in this regard
- At points where the line crosses a fence in which there is no suitable gate within the extent of the line servitude, on the instruction of the DPM, a gate must be installed at the approval of the landowner;	dEO	Install new gates where requires with the approval of the affected landowner.	During the construction phase	ECO	Once, prior to construction and during construction phase, as and when required	New gates installed as per requirement
- Care must be taken that the gates must be so erected that there is a gap of no more than 100 mm between the bottom of the gate and the ground;	Contractor	Install gates in a manner so that there is a gap of no more than 100, between the bottom of the gate and the ground	During the construction phase	cEO	Once, during the erection of the gates during the construction phase.	New gates installed as per requirement
- Where gates are installed in jackal proof fencing, a suitable reinforced concrete sill must be provided beneath the gate;	Contractor	Implement a reinforced concrete sill beneath gates installed for jackal proofing.	During the construction phase	cEO	Once, during the erection of the gates during the construction phase	No tension reduction on fence wires
- Original tension must be maintained in the fence wires;	Contractor	Maintain original tension of fences through required activities	During the construction phase	ECO	Monthly	Gates installed in electrified fencing is electrified
- All gates installed in electrified fencing must be re-electrified;	Contractor	Electrify gates installed in electrified fencing	During the construction phase	ECO	Once, during the erection of the gates	Photographic record of maintained

					during the construction phase	fences and barriers
– All demarcation fencing and barriers must be maintained in good working order for the duration of overhead transmission and distribution electricity infrastructure development activities;	Contractor	Undertake maintenance activities on fences and barriers.	During the construction phase	ECO	Monthly	Photographic record of fences erected
– Fencing must be erected around the camp, batching plants, hazardous storage areas, and all designated access restricted areas, where appropriate and would not cause harm to the sensitive flora;	Contractor	Fence construction camps, batching plants, hazardous storage areas and access restricted areas. Avoid sensitive flora.	During the construction phase	ECO	Once during the erection of fencing	Photographic record of fences erected
– Any temporary fencing to restrict the movement of life-stock must only be erected with the permission of the land owner.	dEO / cEO Contractor	Obtain written approval from the relevant landowner where temporary fencing is required to restrict livestock movement.	During the construction phase	ECO	To be monitored as temporary fencing is required	Written approval to be provided by the dEO
– All fencing must be developed of high quality material bearing the SABS mark;	Contractor	Make use of high quality materials approved by SABS.	During the construction phase	cEO	To be monitored as fencing is erected during the construction phase	Use of high quality materials for fencing approved by SABS
– The use of razor wire as fencing must be avoided;	Contractor	Razor wire must not be sources or used for the	During the construction phase	ECO	To be monitored as fencing is erected	Fences erected do not make use of razor wire

		erection of fencing			during the construction phase	
<ul style="list-style-type: none"> <li>Fenced areas with gate access must remain locked after hours, during weekends and on holidays if staff is away from site. Site security will be required at all times;</li> </ul>	DSS and Contractor	Ensure fenced areas are locked as required through the implementation of a formalized process. Appoint a security company	During the construction phase	cEO	Weekly and as and when required	Fences are locked and no complaints from landowners are received. A security company is appointed.
<ul style="list-style-type: none"> <li>On completion of the development phase all temporary fences are to be removed;</li> </ul>	Contractor	Removal of all temporary fences	At the end of the construction phase	ECO dEO	Once, following the completion of the construction phase	No temporary fences associated with the project is present following the completion of the construction phase.

<ul style="list-style-type: none"> <li>- The contractor must ensure that all fence uprights are appropriately removed, ensuring that no uprights are cut at ground level but rather removed completely.</li> </ul>	Contractor	Appropriate removal of all fence uprights.	At the end of the construction phase	ECO dEO	Once, following the completion of the construction phase	No fence uprights associated with the project is present following the completion of the construction phase.
--	------------	--	--------------------------------------	---------	--	--

### 5.6 Water Supply Management

**Impact management outcome:** Undertake responsible water usage.

Impact Management Actions	Implementation			Monitoring		
	Responsible person	Method of implementation	Timeframe for implementation	Responsible person	Frequency	Evidence of compliance
– All abstraction points or bore holes must be registered with the DWS and suitable water meters installed to ensure that the abstracted volumes are measured on a daily basis;	Not applicable					
– The Contractor must ensure the following: a. The vehicle abstracting water from a river does not enter or cross it and does not operate from within the river; b. No damage occurs to the river bed or banks and that the abstraction of water does not entail stream diversion activities; and c. All reasonable measures to limit pollution or sedimentation of the downstream watercourse are implemented.	Not applicable					
– Ensure water conservation is being practiced by: a. Minimising water use during cleaning of equipment; b. Undertaking regular audits of water systems; and c. Including a discussion on water usage and conservation during environmental awareness training. d. The use of grey water is encouraged.	Contractor / dEO / cEO in consultation with the ECO	Implement the required water conservation measures throughout onsite construction processes	During the construction phase	ECO	Monthly, and as and when required	Successful implementation of water conservation

### 5.7 Storm and waste water management

**Impact management outcome:** Impacts to the environment caused by storm water and wastewater discharges during construction are avoided.

Impact Management Actions	Implementation			Monitoring		
	Responsible person	Method of implementation	Timeframe for implementation	Responsible person	Frequency	Evidence of compliance

<p>- Runoff from the cement/ concrete batching areas must be strictly controlled, and contaminated water must be collected, stored and either treated or disposed of off-site, at a location approved by the project manager;</p>	Contractor	Implement measures for the control and management of runoff	During the construction phase	ECO	Weekly	No mismanagement of runoff or contaminated water due to the temporary concrete batching plant
<p>- All spillage of oil onto concrete surfaces must be controlled by the use of an approved absorbent material and the used absorbent material disposed of at an appropriate waste disposal facility;</p>	Contractor and cEO	Obtain approved absorbent material and make use of licensed waste disposal facilities for disposal of oil	During the construction phase	ECO	Monthly	Availability of approved absorbent material at the construction site and proof of disposal of oil at licensed disposal facilities
<p>- Natural storm water runoff not contaminated during the development and clean water can be discharged directly to watercourses and water bodies, subject to the Project Manager's approval and support by the ECO;</p>	DPM in consultation with ECO	Consultation between the DPM and the ECO to determine if water can be discharged directly into water bodies (where present). The necessary water quality testing must be undertaken prior	During the construction phase	ECO	As and when the need arises to discharge natural stormwater runoff and clean water	Proof of consultation between the DPM and ECO and the outcomes thereof to be provided. Proof of water quality testing and



		to discharge				the results thereof.
<ul style="list-style-type: none"> <li>Water that has been contaminated with suspended solids, such as soils and silt, may be released into watercourses or water bodies only once all suspended solids have been removed from the water by settling out these solids in settlement ponds. The release of settled water back into the environment must be subject to the Project Manager's approval and support by the ECO.</li> </ul>	DPM in consultation with ECO	Consultation between the DPM and the ECO to determine if water can be discharged directly into water bodies (where present). The necessary water quality testing must be undertaken prior to discharge	During the construction phase	ECO	As and when the need arises to discharge water	Proof of consultation between the DPM and ECO and the outcomes thereof to be provided. Proof of water quality testing and the results thereof.

### 5.8 Solid and hazardous waste management

**Impact management outcome:** Waste is appropriately stored, handled and safely disposed of at a recognised waste facility.

Impact Management Actions	Implementation			Monitoring		
	Responsible person	Method of implementation	Timeframe for implementation	Responsible person	Frequency	Evidence of compliance
<ul style="list-style-type: none"> <li>All measures regarding waste management must be undertaken using an integrated waste management approach;</li> </ul>	Contractor	Develop and implement a waste	During the construction phase	ECO	Monthly	Implementation of the waste management

		management plan				plan and proof of waste management through proof of responsible disposal
- Sufficient, covered waste collection bins (scavenger and weatherproof) must be provided;	Contractor	Provision of appropriate waste collection bins strategically placed throughout the site	During the construction phase	ECO	Weekly	Appropriate waste collection bins are available throughout the site
- A suitably positioned and clearly demarcated waste collection site must be identified and provided;	DPM and Contractor	Identify an appropriate location for the waste collection site which must be clearly demarcated through signage and temporary fencing.	During the construction phase	ECO	Once, prior to the commencement of construction	A waste collection site is appropriately placed and demarcated
- The waste collection site must be maintained in a clean and orderly manner;	Contractor	Regular collection of waste and maintenance of the area must be undertaken as per waste requirements for the project during construction.	During the construction phase	ECO	Weekly	The waste collection site is maintained and clean

- Waste must be segregated into separate bins and clearly marked for each waste type for recycling and safe disposal;	Contractor	Provide separate and marked bins for the different waste types associated with the construction phase	During the construction phase	cEO	Weekly	Separate waste bins are available on site and waste generated is separated into the relevant bins
- Staff must be trained in waste segregation;	cEO/dEO in consultation with the ECO	Include waste segregation as part of the environmental awareness training material.	Pre-construction Construction	ECO	Monthly and as and when required	Environmental awareness training material requirements checklist
- Bins must be emptied regularly;	Contractor	Bins must be emptied before reaching total capacity and on a regular basis as required for the project	During the construction phase	ECO	Monthly	No mismanagement of bins.
- General waste produced onsite must be disposed of at registered waste disposal sites/ recycling company;	Contractor	Disposal of general waste at licensed waste disposal facilities must be undertaken as per the waste management plan	During the construction phase	ECO	Monthly	Disposal certificates of disposal at licensed facilities to be provided
- Hazardous waste must be disposed of at a registered waste disposal site;	Contractor	Disposal of hazardous waste at licensed waste disposal facilities must be undertaken as per the waste	During the construction phase	ECO	Monthly	Disposal certificates of disposal at licensed facilities to be provided

		management plan				
- Certificates of safe disposal for general, hazardous and recycled waste must be maintained.	Contractor	Obtain certificates for safe disposal of waste	During the construction phase	ECO	Monthly	Disposal certificates of disposal at licensed facilities to be provided and filed as part of the filing system

### 5.9 Protection of watercourses and estuaries

**Impact management outcome:** Pollution and contamination of the watercourse environment and or estuary erosion are prevented.

Impact Management Actions	Implementation			Monitoring		
	Responsible person	Method of implementation	Timeframe for implementation	Responsible person	Frequency	Evidence of compliance
- All watercourses must be protected from direct or indirect spills of pollutants such as solid waste, sewage, cement, oils, fuels, chemicals, aggregate tailings, wash and contaminated water or organic material resulting from the Contractor's activities;	Contractor	Contractor to undertake activities which can cause spills of pollutants outside of watercourses	During the construction phase	ECO	Weekly	No incidents reported of spillage of pollutants into watercourses
- In the event of a spill, prompt action must be taken to clear the polluted or affected areas;	Contractor and cEO	Develop a management plan or process for implementation should a spill take place	During the construction phase	ECO	Weekly	Feedback must be provided by the contractor in

						terms of how the spill was handled and photographic evidence of the feedback must be provided and kept on record
- Where possible, no development equipment must traverse any seasonal or permanent wetland	Contractor, cEO	Demarcate wetland areas to be avoided	During the construction phase	ECO	Weekly	Provide plans and evidence of fencing around wetland. No reported incidents of traversing the wetlands
- No return flow into the estuaries must be allowed and no disturbance of the Estuarine Functional Zone should occur;	Not applicable					
- Development of permanent watercourse or estuary crossing must only be undertaken where no alternative access to tower position is available;	cEO, Contractor	Ensure that permeant crossings (access roads) are provided for access to the grid connection corridor if no alternative crossing is available.	During the construction phase	ECO	Weekly	Ensure that permeant crossings are developed if there is no alternative.

<ul style="list-style-type: none"> <li>- There must not be any impact on the long term morphological dynamics of watercourses or estuaries;</li> </ul>	DPM, cEO	Develop a management plan or process for implementation should a spill take place within a watercourse and ensure continually monitoring	During the construction and operation phase	ECO, dEO	For all phases of the project life cycle (i.e. construction, operation, decommissioning)	No incidents reported of spillage of pollutants into watercourses
<ul style="list-style-type: none"> <li>- Existing crossing points must be favored over the creation of new crossings (including temporary access)</li> </ul>	DPM, cEO	Develop a management plan or process for implementation should a spill take place within a watercourse and ensure continually monitoring	During the preconstruction and construction phase	ECO, dEO	During the construction phase of the project.	Existing crossing points utilised as opposed to new ones created and no incidents reported of spillage of pollutants into watercourses
<ul style="list-style-type: none"> <li>- When working in or near any watercourse or estuary, the following environmental controls and consideration must be taken: <ul style="list-style-type: none"> <li>a) Water levels during the period of construction; No altering of the bed, banks, course or characteristics of a watercourse</li> <li>b) During the execution of the works, appropriate measures to prevent pollution and contamination of the riparian environment must be implemented e.g. including ensuring that construction equipment is well maintained;</li> <li>c) Where earthwork is being undertaken in close proximity to any watercourse, slopes must be stabilised using suitable materials, i.e.</li> </ul> </li> </ul>	Contractor	Activities undertaken near watercourses must be in-line with and consider the specified environmental controls	During the construction phase	ECO	Monthly, and as and when required	No degradation of the watercourses and no incidents of destruction reported

<p>sandbags or geotextile fabric, to prevent sand and rock from entering the channel; and</p> <p>d) Appropriate rehabilitation and re-vegetation measures for the watercourse banks must be implemented timeously. In this regard, the banks should be appropriately and incrementally stabilised as soon as development allows.</p>						
--	--	--	--	--	--	--

### 5.10 Vegetation clearing

**Impact management outcome:** Vegetation clearing is restricted to the authorised development footprint of the proposed infrastructure.

Impact Management Actions	Implementation			Monitoring		
	Responsible person	Method of implementation	Timeframe for implementation	Responsible person	Frequency	Evidence of compliance
<p>General:</p> <ul style="list-style-type: none"> <li>Indigenous vegetation which does not interfere with the development must be left undisturbed;</li> </ul>	cEO and contractor	Demarcate areas of indigenous vegetation to be avoided before clearance is undertaken	Construction and operation (i.e. for maintenance purposes)	ECO Operation and maintenance team	Weekly, and as and when required	No unnecessary clearance of indigenous vegetation is undertaken
<ul style="list-style-type: none"> <li>Protected or endangered species may occur on or near the development site. Special care should be taken not to damage such species;</li> </ul>	Contractor	Demarcate areas containing protected or endangered species to be avoided by construction	During the Construction Phase	ECO	Weekly, and as and when required	No clearance of protected or endangered species other than those

		activities				permitted to be removed
<ul style="list-style-type: none"> <li>Search, rescue and replanting of all protected and endangered species likely to be damaged during project development must be identified by the relevant specialist and completed prior to any development or clearing;</li> </ul>	Relevant specialist in consultation with the Contractor	Develop and implement a Plant Search and Rescue Plan	Pre-construction & Construction	ECO	Weekly, and as and when required	Implementation of the Plant Search and Rescue Plan and photographic evidence and notes of the implementation of the plan
<ul style="list-style-type: none"> <li>Permits for removal must be obtained from the Department of Agriculture, Forestry and Fisheries prior to the cutting or clearing of the affected species, and they must be filed;</li> </ul>	DPM	Undertake the permitting process in order to obtain the relevant permits for the removal of protected species. Permits must be kept on file	Pre-construction	ECO	Once, prior to the commencement of the construction phase and removal of the protected species	DAFF permits on file
<ul style="list-style-type: none"> <li>The Environmental Audit Report must confirm that all identified species have been rescued and replanted and that the location of replanting is compliant with conditions of approvals;</li> </ul>	ECO	Ensure that the audit report indicates all species rescued and replanted and provides feedback in terms of compliance with the conditions of permits for	During the Construction Phase and following the completion of the Construction Phase	Not Applicable		



		replanting				
- Trees felled due to construction must be documented and form part of the Environmental Audit Report;	ECO	Ensure that the audit report documents the details of trees felled	During the Construction Phase and following the completion of the Construction Phase	Not Applicable		
- Rivers and watercourses must be kept clear of felled trees, vegetation cuttings and debris;	Contractor	Felled trees, vegetation cuttings and debris must be disposed of at a licensed waste disposal facility	During the Construction Phase	ECO	Monthly	No felled trees, vegetation cuttings and debris are dumped in inappropriate locations and disposal certificates are available as proof of responsible disposal
- Only a registered pest control operator may apply herbicides on a commercial basis and commercial application must be carried out under the supervision of a registered pest control operator, supervision of a registered pest control operator or is appropriately trained;	DPM and Contractor	A suitably qualified pest control operator must be appointed	Construction and Operation	ECO	As and when the use of herbicides is required	Only registered pest control operators must be appointed and proof of their registration must be provided
- A daily register must be kept of all relevant details of herbicide usage;	Contractor	Develop a daily register for the documentation of the details of herbicide usage	During the construction phase	ECO	Monthly	Daily register provided by the pest control operator

- No herbicides must be used in estuaries;	Not applicable					
- All protected species and sensitive vegetation not removed must be clearly marked and such areas fenced off in accordance to <i>Section 5.3: Access restricted areas</i> .	Contractor in consultation with the cEO	Spatially demarcate protected species and sensitive vegetation and implement appropriate fencing where required as per section 5.3	During the construction phase	ECO	Once, during the undertaking of the demarcation of the areas and the erection of the fencing	Demarcation and fencing is undertaken inline with the requirements of section 5.3
Servitude:						
- Vegetation that does not grow high enough to cause interference with overhead transmission and distribution infrastructures, or cause a fire hazard to any plantation, must not be cut or trimmed unless it is growing in the road access area, and then only at the discretion of the Project Manager;	Contractor in consultation with the DPM	Identify areas of vegetation not to be trimmed	Construction and Operation	ECO Operation and maintenance team	Monthly	An indication of the areas where vegetation has not been trimmed or where vegetation has been removed from access roads must be provided.
- Where clearing for access purposes is essential, the maximum width to be cleared within the servitude must be in accordance to distance as agreed between the land owner and the EA holder;	Contractor	Clearing for access must be undertaken as per the	During the construction phase	ECO	Monthly, and as and when required	Proof must be provided that only agreed

		requirements provided by the landowner and the EA holder				upon areas have been cleared
<ul style="list-style-type: none"> <li>- Alien invasive vegetation must be removed according to a plan (in line with relevant municipal and provincial procedures, guidelines and recommendations) and disposed of at a recognised waste disposal facility;</li> </ul>	Contractor	Undertake removal of alien invasive vegetation in accordance with the relevant guideline relevant to the project area and ensure the vegetation is disposed of at a licensed waste disposal facility	Construction and Operation	ECO Operation and maintenance team	Monthly, and as and when required	Proof must be provided that alien invasive vegetation has been cleared in accordance to the relevant guideline and that the vegetation was disposed of at a licensed waste disposal facility
<ul style="list-style-type: none"> <li>- Vegetation must be trimmed where it is likely to intrude on the minimum vegetation clearance distance (MVCD) or will intrude on this distance before the next scheduled clearance. MVCD is determined from SANS 10280;</li> </ul>	Contractor	Develop a procedure for the trimming of vegetation in terms of the listed requirements	Construction and Operation	ECO Operation and maintenance team	Monthly, and as and when required	Proof must be provided that vegetation is trimmed in accordance with the listed requirements

<ul style="list-style-type: none"> <li>- Debris resulting from clearing and pruning must be disposed of at a recognised waste disposal facility, unless the landowners wish to retain the cut vegetation;</li> </ul>	Contractor	Dispose of the debris in accordance with the waste management plan	Construction and Operation	ECO Operation and maintenance team	Monthly, and as and when required	Proof must be provided that the debris has been disposed of at a licensed waste disposal facility
<ul style="list-style-type: none"> <li>- In the case of the development of new overhead transmission and distribution infrastructures, a one metre "trace-line" must be cut through the vegetation for stringing purposes only and no vehicle access must be cleared along the "trace-line". Alternative methods of stringing which limit impact to the environment must always be considered.</li> </ul>	Contractor	Develop a procedure for the cutting of vegetation for stringing purposes	Pre-construction & Construction	ECO	Once, prior to the commencement of construction	Proof of implementation of the procedure for the cutting of vegetation for stringing purposes

### 5.11 Protection of fauna

**Impact management outcome:** Minimise disturbance to fauna.

<b>Impact Management Actions</b>	<b>Implementation</b>	<b>Monitoring</b>
----------------------------------	-----------------------	-------------------

	Responsible person	Method of implementation	Timeframe for implementation	Responsible person	Frequency	Evidence of compliance
- No interference with livestock must occur without the landowner's written consent and with the landowner or a person representing the landowner being present;	dEO / cEO Contractor	Develop a procedure for dealing with livestock within the affected properties	Pre-construction and during the construction phase	ECO	Once, prior to the commencement of construction and as and when required during the construction phase	Written consent provided by the landowner and proof of representation of the landowner during interference
- The breeding sites of raptors and other wild birds species must be taken into consideration during the planning of the development programme;	dEO / cEO in consultation with the Contractor	Ensure that the planning and development programme considers breeding sites for wild bird species	Pre-construction & Construction	ECO	Once, prior to the commencement of construction and as and when required	The planning and development programme includes the consideration of breeding sites for wild bird species
- Breeding sites must be kept intact and disturbance to breeding birds must be avoided. Special care must be taken where nestlings or fledglings are present;	dEO / cEO in consultation with the Contractor	Avoid breeding sites and ensure that special care is taken in the presence of nestlings and fledglings	During the Construction Phase Operation Phase	ECO Operation and maintenance team	Weekly, and as and when required during the construction. Monthly, and as and when	Photographic record of intact breeding sites

					required during operation	
- Nesting sites on existing parallel lines must be documented;	dEO / cEO in consultation with the Contractor	Walk-downs of the existing lines located parallel to the project must be undertaken and nests and the details thereof documented	During the Construction Phase Operation Phase	ECO Operation and maintenance team	Quarterly, and as and when required	Details of walkdowns undertaken must be noted and kept on file and photographic records of nesting sites must be kept
- Special recommendations of the avian specialist must be adhered to at all times to prevent unnecessary disturbance of birds;	dEO / cEO in consultation with the Contractor	All mitigation measures recommended by the avifauna specialist must be implemented	During the Construction Phase Operation Phase	ECO Operation and maintenance team	Weekly during construction and monthly during operation	Photographic record of compliance and successful implementation of the recommended measures
- Bird guards and diverters must be installed on the new line as per the recommendations of the specialist;	dEO / cEO in consultation with the Contractor	Recommendations made by the specialist for the installation of bird guards and diverters must be adhered to and implemented as appropriate. Bird guards and diverters must be maintained	During the Construction Phase Operation Phase	ECO Operation and maintenance team	Monthly, and as and when required	Photographic record of implementation and maintenance of bird guards and diverters

<p>- No poaching must be tolerated under any circumstances. All animal dens in close proximity to the works areas must be marked as Access restricted areas;</p>	<p>dEO / cEO in consultation with the Contractor</p>	<p>All site staff must be informed of this requirement during the Environmental Awareness Training and the consequences of not adhering to the requirement. These areas must be demarcated as Access Restricted Areas</p>	<p>During the Construction Phase</p>	<p>ECO</p>	<p>Monthly, and as and when required</p>	<p>No instances of poaching is reported</p>
<p>- No deliberate or intentional killing of fauna is allowed;</p>	<p>dEO / cEO in consultation with the Contractor</p>	<p>All site staff must be informed of this requirement during the Environmental Awareness Training and the consequences of not adhering to the requirement. These areas must be demarcated as Access Restricted Areas</p>	<p>During the Construction Phase</p>	<p>ECO</p>	<p>Monthly, and as and when required</p>	<p>No instances of deliberate or intentional killing is reported</p>
<p>- In areas where snakes are abundant, snake deterrents to be deployed on the pylons to prevent snakes climbing up, being electrocuted and causing power outages; and</p>	<p>dEO / cEO in consultation with the Contractor</p>	<p>Implement and maintain snake deterrents on pylons in areas where snakes are abundant</p>	<p>During the Construction Phase and Operation Phase</p>	<p>ECO Operation and maintenance team</p>	<p>Once, during the construction of the pylons and as and when</p>	<p>Photographic record of the implementation and maintenance of</p>

					required. Monthly during operation	snake deterrents
- No Threatened or Protected species (ToPs) and/or protected fauna as listed according NEMBA (Act No. 10 of 2004) and relevant provincial ordinances may be removed and/or relocated without appropriate authorisations/permits.	DPM in consultation with the dEO	Undertake a permitting process to obtain the required permits	Pre-construction	ECO	Once, prior to the commencement of construction and as and when required	Permits for removal and/relocation must be kept on file and be readily available

### 5.12 Protection of heritage resources

**Impact management outcome:** Minimise impact to heritage resources.

Impact Management Actions	Implementation			Monitoring		
	Responsible person	Method of implementation	Timeframe for implementation	Responsible person	Frequency	Evidence of compliance
- Identify, demarcate and prevent impact to all known sensitive heritage features on site in accordance with the No-Go procedure in Section 5.3: Access restricted areas;	DPM and a suitably qualified specialist dEO / cEO in consultation with the Contractor and ECO	Undertake a Heritage Walkthrough Survey Spatially identify and demarcate areas of heritage significance as per the Heritage Impact Assessment and	Pre-construction	ECO	Once, prior to the commencement of construction	Proof of avoidance of sensitive heritage features through details of avoidance and photographic records



		the Heritage Walk-through Report and as per the requirements of section 5.3				
- Carry out general monitoring of excavations for potential fossils, artefacts and material of heritage importance;	Suitably qualified specialist in consultation with the ECO	Appoint a suitably qualified specialist to carry out the monitoring of excavations for fossils, artefacts and important heritage material	During the Construction Phase	ECO	During the undertaking of excavations of fossils, artefacts and heritage material	Proof of appointment of a suitably qualified specialist and photographic record of required monitoring by the specialist
- All work must cease immediately, if any human remains and/or other archaeological, paleontological and historical material are uncovered. Such material, if exposed, must be reported to the nearest museum, archaeologist/ paleontologist (or the South African Police Services), so that a systematic and professional investigation can be undertaken. Sufficient time must be allowed to remove/collect such material before development recommences.	dEO / cEO in consultation with the Contractor and ECO	Develop and implement procedures for situations where human remains, archaeological, palaeontological or historical material are uncovered	During the Construction Phase	ECO	Weekly, during the construction phase and as and when required	Proof of work ceased and the required procedures followed in cases where material is discovered.

### 5.13 Safety of the public

**Impact management outcome:** All precautions are taken to minimise the risk of injury, harm or complaints.

Impact Management Actions	Implementation	Monitoring
---------------------------	----------------	------------

	Responsible person	Method of implementation	Timeframe for implementation	Responsible person	Frequency	Evidence of compliance
<ul style="list-style-type: none"> <li>Identify fire hazards, demarcate and restrict public access to these areas as well as notify the local authority of any potential threats e.g. large brush stockpiles, fuels etc.;</li> </ul>	cEO in consultation with the Contractor	Develop an Emergency Preparedness, Response and Fire Management Plan specific to the project	Pre-construction Construction	ECO	Once, prior to the commencement of construction and weekly during the construction phase	Compliance with the Emergency Preparedness, Response and Fire Management Plan
<ul style="list-style-type: none"> <li>All unattended open excavations must be adequately fenced or demarcated;</li> </ul>	Contractor	Ensure that all excavations undertaken is fenced and demarcated within a reasonable timeframe and in instances where excavations will be open for long-periods of time	During the construction phase	ECO	Weekly	Excavations are fenced where required and photographic proof can be provided
<ul style="list-style-type: none"> <li>Adequate protective measures must be implemented to prevent unauthorised access to and climbing of partly constructed towers and protective scaffolding;</li> </ul>	Contractor	All staff must be easily identifiable and the climbing of towers and scaffolding must be undertaken by authorised personnel as managed by the Contractor	During the construction phase	ECO	Monthly, and as and when required	No incidents of unauthorised climbing is reported

- Ensure structures vulnerable to high winds are secured;	Contractor	Ensure that sufficient stabilisation measures are implemented to secure structures vulnerable to high winds	During the construction phase	ECO	Weekly, and as and when required	No incidents of unstable structures due to high winds is reported
- Maintain an incidents and complaints register in which all incidents or complaints involving the public are logged.	cEO	Compile and regularly update as incidents and complaints are submitted from the public and indicate the actions taken to resolve the complaint	During the construction phase	ECO	Monthly, and as and when required	The incidents and complaints register is complete and provides all the required details

#### 5.14 Sanitation

**Impact management outcome:** Clean and well maintained toilet facilities are available to all staff in an effort to minimise the risk of disease and impact to the environment.

Impact Management Actions	Implementation			Monitoring		
	Responsible person	Method of implementation	Timeframe for implementation	Responsible person	Frequency	Evidence of compliance
- Mobile chemical toilets are installed onsite if no other ablution facilities are available;	Contractor	Mobile chemical toilets must be placed appropriately	During the Construction Phase	ECO	Weekly	Mobile toilets are installed and avoid

		and in areas that avoid environmental sensitivities				environmental sensitivities
<ul style="list-style-type: none"> <li>- The use of ablution facilities and or mobile toilets must be used at all times and no indiscriminate use of the veld for the purposes of ablutions must be permitted under any circumstances;</li> </ul>	Contractor in consultation with the cEO	All site staff must be informed of this requirement during the Environmental Awareness Training and the consequences of not adhering to the requirement.	Pre-construction & Construction	ECO	Monthly, and as and when required	No evidence of non-compliance identified
<ul style="list-style-type: none"> <li>- Where mobile chemical toilets are required, the following must be ensured: <ul style="list-style-type: none"> <li>a) Toilets are located no closer than 100 m to any watercourse or water body;</li> <li>b) Toilets are secured to the ground to prevent them from toppling due to wind or any other cause;</li> <li>c) No spillage occurs when the toilets are cleaned or emptied and the contents are managed in accordance with the EMPr;</li> <li>d) Toilets have an external closing mechanism and are closed and secured from the outside when not in use to prevent toilet paper from being blown out;</li> <li>e) Toilets are emptied before long weekends and workers holidays, and must be locked after working hours;</li> <li>f) Toilets are serviced regularly and the ECO must inspect toilets to ensure compliance to health standards;</li> </ul> </li> </ul>	Contractor in consultation with the cEO	The installation of the toilets by the Contractor must be as per the listed requirements	During the Construction Phase	ECO	Weekly	No evidence of non-compliance identified
<ul style="list-style-type: none"> <li>- A copy of the waste disposal certificates must be maintained.</li> </ul>	Contractor	Certificates obtained from the licensed waste disposal facility with the emptying of the toilets must be	During the Construction Phase	ECO	Monthly, and as and when required	Certificates for waste disposal from the licensed waste

		kept on file				disposal facility
--	--	--------------	--	--	--	-------------------

### 5.15 Prevention of disease

**Impact Management outcome:** All necessary precautions linked to the spread of disease are taken.

Impact Management Actions	Implementation			Monitoring		
	Responsible person	Method of implementation	Timeframe for implementation	Responsible person	Frequency	Evidence of compliance
– Undertake environmentally-friendly pest control in the camp area;	Contractor	Only environmentally-friendly pest control must be used, when required	During the Construction Phase	ECO	As and when pest control is required for the project	Contractor to provide proof of pest control used being environmentally-friendly
– Ensure that the workforce is sensitised to the effects of sexually transmitted diseases, especially HIV AIDS;	cEO / Contractor in consultation with the ECO	The effects of sexually transmitted diseases and HIV/ AIDS must be covered in the Environmental Awareness Training	Pre-construction & Construction	ECO	Once, prior to the commencement of construction and monthly during construction	Environmental awareness training material requirements checklist
– The Contractor must ensure that information posters on AIDS are displayed in the Contractor Camp area;	Contractor	Develop and place information posters on HIV/ AIDS	During the Construction Phase	ECO	Weekly	Photographic evidence of poster placement

- Information and education relating to sexually transmitted diseases to be made available to both construction workers and local community, where applicable;	cEO / Contractor in consultation with the ECO	Information and education of sexually transmitted diseases must be covered in the Environmental Awareness Training.	Pre-construction & Construction	ECO	Monthly	Environmental awareness training material requirements checklist
- Free condoms must be made available to all staff on site at central points;	Contractor	Placement of free condoms in mobile toilets and at the construction camps	During the Construction Phase	ECO	Monthly	Proof of placement of free condoms by the contractor to be provided
- Medical support must be made available;	dEO / cEO in consultation with the Contractor	Ensure that designated personnel with first aid training are available on site and that first aid kits to provide medical support is readily available	Construction and Operations	ECO	Monthly	Check the availability of first aid trained personnel and medical kits (including if these are complete in terms of supplies)
- Provide access to Voluntary HIV Testing and Counselling Services.	Contractor	Compile a HIV testing schedule and provide counselling services where required	During the Construction Phase	ECO	Quarterly, and as and when required	Voluntary testing schedules and proof of counselling (where undertaken)

### 5.16 Emergency procedures

**Impact management outcome:** Emergency procedures are in place to enable a rapid and effective response to all types of environmental emergencies.

Impact Management Actions	Implementation			Monitoring		
	Responsible person	Method of implementation	Timeframe for implementation	Responsible person	Frequency	Evidence of compliance
<ul style="list-style-type: none"> <li>– Compile an Emergency Response Action Plan (ERAP) prior to the commencement of the proposed project;</li> </ul>	Contractor	Develop an Emergency Preparedness, Response and Fire Management Plan specific to the project	Pre-construction	ECO	Once, prior to the commencement of construction	Emergency Preparedness, Response and Fire Management Plan compiled
<ul style="list-style-type: none"> <li>– The Emergency Plan must deal with accidents, potential spillages and fires in line with relevant legislation;</li> </ul>	Contractor	Develop an Emergency Preparedness, Response and Fire Management Plan specific to the project which covers accidents, potential spillages and fires	Pre-construction	ECO	Once, prior to the commencement of construction	Emergency Preparedness, Response and Fire Management Plan includes required specifications
<ul style="list-style-type: none"> <li>– All staff must be made aware of emergency procedures as part of environmental awareness training;</li> </ul>	Contractor in	Develop environmental	Pre-construction	ECO	Prior to the	Environmental

	consultation with the ECO	awareness training material which covers the relevant emergency procedures			commencement of the environmental awareness training	awareness training material requirements checklist
- The relevant local authority must be made aware of a fire as soon as it starts;	Contractor in consultation with the ECO	Develop and include a procedure in the Emergency Preparedness, Response and Fire Management Plan for the event of a fire and the procedure to be followed for informing the local authority	Construction	ECO	As and when a fire occurs	The local authority was informed as per the relevant procedure set out in the Emergency Preparedness, Response and Fire Management Plan
- In the event of emergency necessary mitigation measures to contain the spill or leak must be implemented (see Hazardous Substances section 5.17).	Contractor	Implement the required mitigation measures in the event of a spill or leak as per the requirements of Section 5.17.	Construction and Operations	ECO	As and when a spill or leak occurs	The mitigation measures included under Section 5.17 have been adhered to

### 5.17 Hazardous substances

**Impact management outcome:** Safe storage, handling, use and disposal of hazardous substances.



Impact Management Actions	Implementation			Monitoring		
	Responsible person	Method of implementation	Timeframe for implementation	Responsible person	Frequency	Evidence of compliance
<ul style="list-style-type: none"> <li>The use and storage of hazardous substances to be minimised and non-hazardous and non-toxic alternatives substituted where possible;</li> </ul>	cEO in consultation with the Contractor	Develop a strategy of how hazardous substances can be and should be minimised	Pre-construction & Construction	ECO	Once, prior to the commencement of construction and monthly during the construction phase	Contractor to provide evidence of substances used for proof of compliance
<ul style="list-style-type: none"> <li>All hazardous substances must be stored in suitable containers as defined in the Method Statement;</li> </ul>	Contractor	Develop a Method Statement for the storage of hazardous substances in suitable containers	Pre-construction & Construction	ECO	Once, prior to the commencement of construction and monthly during the construction phase	Photographic proof that hazardous substances are stored in suitable containers as per the requirements of the relevant Method Statements
<ul style="list-style-type: none"> <li>Containers must be clearly marked to indicate contents, quantities and safety requirements;</li> </ul>	Contractor	Where hazardous waste is stored these must be clearly marked indicating the required details of the contents	During the Construction Phase	ECO	Monthly	Photographic proof that containers are marked as per the requirements

<ul style="list-style-type: none"> <li>- All storage areas must be banded. The banded area must be of sufficient capacity to contain a spill / leak from the stored containers;</li> </ul>	Contractor	Ensure that storage areas are sufficiently banded which are of sufficient capacity to contain a spill / leak from the stored containers	During the Construction Phase	ECO	Monthly during the Construction Phase	Photographic proof that storage areas are banded and proof that the bund areas are of sufficient capacity to contain a spill / leak from the stored containers
<ul style="list-style-type: none"> <li>- Banded areas to be suitably lined with a SABS approved liner;</li> </ul>	Contractor	Ensure that banded storage areas are suitably lined	During the Construction Phase	ECO	Once, during the Construction Phase	Photographic proof that banded storage areas are suitably lined
<ul style="list-style-type: none"> <li>- An Alphabetical Hazardous Chemical Substance (HCS) control sheet must be drawn up and kept up to date on a continuous basis;</li> </ul>	cEO / Contractor	Compile and update an Alphabetical Hazardous Chemical Substance (HCS) control sheet specific to the project	During the Construction Phase	ECO	Monthly, and as and when required	Complete and up to date control sheet provided by the Contractor
<ul style="list-style-type: none"> <li>- All hazardous chemicals that will be used on site must have Material Safety Data Sheets (MSDS);</li> </ul>	cEO / Contractor	Keep a record of all hazardous chemicals and the respective MSDS	During the Construction Phase	ECO	Monthly, and as and when required	Record of hazardous chemicals and the respective MSDS

<p>– All employees working with HCS must be trained in the safe use of the substance and according to the safety data sheet;</p>	<p>cEO / Contractor</p>	<p>Provide training for personnel working with HCS</p>	<p>Pre-construction</p>	<p>ECO</p>	<p>Once, prior to the commencement of construction and as and when required</p>	<p>Record of training provided to personnel working with HCS</p>
<p>– Employees handling hazardous substances / materials must be aware of the potential impacts and follow appropriate safety measures. Appropriate personal protective equipment must be made available;</p>	<p>cEO / Contractor</p>	<p>Develop environmental awareness training material which covers the relevant impacts and safety measures. Provide appropriate training and personal protective equipment for the relevant personnel handling hazardous substances and materials</p>	<p>Pre-construction &amp; Construction</p>	<p>ECO</p>	<p>Prior to the commencement of the environmental awareness training and monthly during the construction phase for personal protective equipment</p>	<p>Environmental awareness training material requirements checklist and all relevant personnel have undergone appropriate training and have access to personal protective equipment</p>
<p>– The Contractor must ensure that diesel and other liquid fuel, oil and hydraulic fluid is stored in appropriate storage tanks or in bowzers;</p>	<p>Contractor</p>	<p>Appropriate storage facilities must be constructed or obtained for the storing of diesel, other liquid fuel, oil and hydraulic fluid</p>	<p>During the Construction Phase</p>	<p>ECO</p>	<p>Monthly, and as and when required</p>	<p>Storage tanks for the project are appropriate and no incidents are reported in this regard</p>

<ul style="list-style-type: none"> <li>- The tanks/ bowsers must be situated on a smooth impermeable surface (concrete) with a permanent bund. The impermeable lining must extend to the crest of the bund and the volume inside the bund must be 130% of the total capacity of all the storage tanks/ bowsers (110% statutory requirement plus an allowance for rainfall);</li> </ul>	Contractor	Appropriate storage facilities must be constructed or obtained for tanks as per the requirements listed	During the Construction Phase	ECO	Monthly, and as and when required	Storage areas for the tanks/ bowsers for the project are appropriate and no incidents are reported in this regard
<ul style="list-style-type: none"> <li>- The floor of the bund must be sloped, draining to an oil separator;</li> </ul>	Contractor	Appropriate storage facilities must be constructed as per the requirements listed	During the Construction Phase	ECO	Once, during construction	Bunded storage areas are constructed according to the requirements
<ul style="list-style-type: none"> <li>- Provision must be made for refueling at the storage area by protecting the soil with an impermeable groundcover. Where dispensing equipment is used, a drip tray must be used to ensure small spills are contained;</li> </ul>	Contractor	Appropriately constructed refuelling facility must be developed as per the requirements. Drip trays must be provided for use	During the Construction Phase	ECO	Monthly Weekly	Soils at the refuelling facility are protected as required and drip trays are provided and used
<ul style="list-style-type: none"> <li>- All empty externally dirty drums must be stored on a drip tray or within a bunded area;</li> </ul>	Contractor	Ensure that empty dirty drums are stored appropriately as per the requirements	During the Construction Phase	ECO cEO	Monthly Weekly	Drip trays or bunded areas are used for the storage of dirty drums

- No unauthorised access into the hazardous substances storage areas must be permitted;	Contractor	Ensure through the implementation of procedures that no unauthorised access is undertaken into the storage areas	During the Construction Phase	ECO	Monthly	Proof of the implementation of the relevant procedure must be provided by the contractor
- No smoking must be allowed within the vicinity of the hazardous storage areas;	Contractor	Inform all employees of the requirement and develop and place relevant signage in the relevant areas	During the Construction Phase	ECO cEO	Monthly Weekly	Photographic record of the signage placed must be provided
- Adequate fire-fighting equipment must be made available at all hazardous storage areas;	Contractor	Hazardous storage areas must be fitted with adequate fire-fighting equipment	During the Construction Phase	ECO	Monthly	Adequate firefighting equipment is available and has been serviced
- Where refueling away from the dedicated refueling station is required, a mobile refueling unit must be used. Appropriate ground protection such as drip trays must be used;	Contractor	Provide a mobile refuelling unit as well as suitable ground protection, where required	During the Construction Phase	ECO	Monthly, and as and when required	A mobile refuelling unit and suitable ground protection is available for use
- An appropriately sized spill kit kept onsite relevant to the scale of the activity/s involving the use of hazardous substance must be available at all times;	Contractor	Provide an appropriate spill kit for the project for the use of hazardous substances	During the Construction Phase	ECO	Monthly, and as and when required	Appropriate spill kits are available for use

<ul style="list-style-type: none"> <li>- The responsible operator must have the required training to make use of the spill kit in emergency situations;</li> </ul>	cEO and Contractor	Provide training on the use of spill kits to the relevant employees	Pre-construction	ECO	Once, prior to the commencement of construction	Proof of training to be provided by the contractor
<ul style="list-style-type: none"> <li>- An appropriate number of spill kits must be available and must be located in all areas where activities are being undertaken;</li> </ul>	cEO and Contractor	Provide an appropriate number of spill kits in relevant areas	During the Construction Phase	ECO	Monthly	Proof of appropriate number of spill kits in appropriate areas to be provided by the contractor
<ul style="list-style-type: none"> <li>- In the event of a spill, contaminated soil must be collected in containers and stored in a central location and disposed of according to the National Environmental Management: Waste Act 59 of 2008. Refer to Section 5.7 for procedures concerning storm and waste water management and 5.8 for solid and hazardous waste management.</li> </ul>	cEO and Contractor	Storage and disposal of contaminated soil must be in accordance with the National Environmental Management: Waste Act and sections 5.7 and 5.8 of this EMPr	During the Construction Phase	ECO	Monthly, and as and when required	Proof of storage and disposal in terms of the National Environmental Management: Waste Act must be provided. Certificates of disposal at licensed waste disposal facilities must be provided

### 5.18 Workshop, equipment maintenance and storage

**Impact management outcome:** Soil, surface water and groundwater contamination is minimised.

Impact Management Actions	Implementation			Monitoring		
	Responsible person	Method of implementation	Timeframe for implementation	Responsible person	Frequency	Evidence of compliance
<ul style="list-style-type: none"> <li>Where possible and practical all maintenance of vehicles and equipment must take place in the workshop area;</li> </ul>	Contractor	Demarcate specific areas for the maintenance of vehicles and equipment	During the Construction Phase	ECO	Monthly	A dedicated area for the maintenance of vehicles and machinery is used.
<ul style="list-style-type: none"> <li>During servicing of vehicles or equipment, especially where emergency repairs are effected outside the workshop area, a suitable drip tray must be used to prevent spills onto the soil. The relevant local authority must be made aware of a fire as soon as it starts;</li> </ul>	Contractor	Ensure that a drip tray is available for an emergency repairs required	During the Construction Phase	ECO	Monthly	Contractor to provide evidence of drip tray use for emergency repairs
<ul style="list-style-type: none"> <li>Leaking equipment must be repaired immediately or be removed from site to facilitate repair;</li> </ul>	Contractor	Ensure that where leaking equipment is identified it is repaired immediately or removed from site for repairs	During the Construction Phase	ECO	Monthly	Contractor to provide details of equipment repaired or removed from site
<ul style="list-style-type: none"> <li>Workshop areas must be monitored for oil and fuel spills;</li> </ul>	cEO	Undertake regular inspections of the workshop areas for oil and fuel spills and keep an	During the Construction Phase	ECO	Monthly	Register of inspection

		updated register of inspection on site				
- Appropriately sized spill kit kept onsite relevant to the scale of the activity taking place must be available;	Contractor	Provide an appropriate spill kit for the project	During the Construction Phase	ECO	Monthly, and as and when required	Appropriate spill kits are available for use
- The workshop area must have a bunded concrete slab that is sloped to facilitate runoff into a collection sump or suitable oil / water separator where maintenance work on vehicles and equipment can be performed;	Contractor	Ensure that the workshop area is sufficiently bunded in accordance with the required specification	During the Construction Phase	ECO	Once, during the Construction Phase and as and when required	Workshop area is bunded in accordance with the required specification
- Water drainage from the workshop must be contained and managed in accordance Section 5.7: storm and waste water management.	Contractor	Ensure that water drainage from workshop area is managed as per the requirements of section 5.7	During the Construction Phase	ECO	Monthly	Workshop drainage is managed in accordance with the requirements

### 5.19 Batching plants

**Impact management outcome:** Minimise spillages and contamination of soil, surface water and groundwater.

Impact Management Actions	Implementation			Monitoring		
	Responsible person	Method of implementation	Timeframe for implementation	Responsible person	Frequency	Evidence of compliance
- Concrete mixing must be carried out on an impermeable surface;	Contractor	Provide impermeable surface for the mixing of	During the Construction Phase	ECO	Weekly	No concrete mixing is undertaken on



		concrete				open ground
- Batching plants areas must be fitted with a containment facility for the collection of cement laden water	Not Applicable - No batching plant required for the installation of the overhead power line.					
- Dirty water from the batching plant must be contained to prevent soil and groundwater contamination	Not Applicable - No batching plant required for the installation of the overhead power line.					
- Bagged cement must be stored in an appropriate facility and at least 10 m away from any water courses, gullies and drains	Contractor	Demarcate and provide a storage area for bagged cement in-line with the listed requirements	During the Construction Phase	ECO	Weekly	Photographic proof of bagged cement stored within the demarcated area
- A washout facility must be provided for washing of concrete associated equipment. Water used for washing must be restricted	Contractor	Provide a washout facility for the washing of associated equipment. Enforce limitations on water use for washing of	During the Construction Phase	ECO	Weekly	No cement laden water is released into the environment. Only minimal water is used for

		equipment				washing
- Hardened concrete from the washout facility or concrete mixer can either be reused or disposed of at an appropriate licenced disposal facility	Contractor	Make use of hardened concrete where possible or dispose of concrete in a suitable manner	During the Construction Phase	ECO	Monthly	Certificates of disposal of concrete at licensed waste disposal facility
- Empty cement bags must be secured with adequate binding material if these will be temporarily stored on site	Contractor	Bind empty cement bags and temporarily store it in an appropriate area on site	During the Construction Phase	ECO	Monthly	Proof of binding of empty cement bags and storage in an appropriate area on site to be provided by the Contractor
- Sand and aggregates containing cement must be kept damp to prevent the generation of dust (Refer to <b>Section 5.20: Dust emissions</b> )	Contractor	Ensure that sand and aggregates are kept damp or otherwise protected from dust generation	During the Construction Phase	ECO	Monthly	Proof of dampening (or alternative dust suppression) of sand and aggregates must be provided by the Contractor
- Any excess sand, stone and cement must be removed or reused from site on completion of construction period and disposed at a registered disposal facility;	Contractor	Ensure that all excess sand, stone and cement is removed or	At the completion of the Construction Phase	ECO	Once, with the completion of	Certificates for the disposal of

		reused			construction	sand, stone and cement at licensed waste disposal facilities or proof of reuse must be provided
- Temporary fencing must be erected around batching plants in accordance with <b>Section 5.5: Fencing and gate installation</b> .	Not Applicable - No batching plant required for the installation of the overhead power line.					

## 5.20 Dust emissions

**Impact management outcome:** Dust prevention measures are applied to minimise the generation of dust.

Impact Management Actions	Implementation			Monitoring		
	Responsible person	Method of implementation	Timeframe for implementation	Responsible person	Frequency	Evidence of compliance
- Take all reasonable measures to minimise the generation of dust as a result of project development activities to the satisfaction of the ECO;	Contractor	Apply appropriate dust suppressant	During the Construction Phase	ECO	Weekly	Contractor to provide proof of

						use of appropriate dust suppressants
- Removal of vegetation must be avoided until such time as soil stripping is required and similarly exposed surfaces must be re-vegetated or stabilised as soon as is practically possible	Contractor	Proper planning for vegetation removal must be undertaken as well as for the associated rehabilitation	During the Construction Phase and Rehabilitation	ECO	Weekly	Plan for implementation must be provided by the Contractor
- Excavation, handling and transport of erodible materials must be avoided under high wind conditions or when a visible dust plume is present	Contractor	Ensure that specific limitations are placed on the transport and handling of erodible materials during high wind conditions or when a visible dust plume is present	During the Construction Phase	ECO	Bi-weekly (every second week)	No complaints submitted in this regard
- During high wind conditions, the ECO must evaluate the situation and make recommendations as to whether dust-damping measures are adequate, or whether working will cease altogether until the wind speed drops to an acceptable level	ECO	ECO to provide adequate recommendations	During the Construction Phase	Not applicable		
- Where possible, soil stockpiles must be located in sheltered areas where they are not exposed to the erosive effects of the wind	Contractor	Place soil stockpiles in areas less affected by wind	During the Construction Phase	ECO	Bi-weekly (every second week)	Soil stockpiles are not exposed to wind and have not been eroded
- Where erosion of stockpiles becomes a problem, erosion control measures must be implemented at the discretion of the ECO;	Contractor in consultation with the ECO	Contractor to implement erosion control measures as	During the Construction Phase	ECO	Weekly, until erosion is no longer a	Recommendations made by the

		recommended and agreed with the ECO			problem	ECO have been implemented by the Contractor
- Vehicle speeds must not exceed 40 km/h along dust roads or 20 km/h when traversing unconsolidated and non-vegetated areas;	cEO / dEO / contractor	Inform all drivers of speed limits and place appropriate signage along the relevant roads	During the Construction Phase Operation Phase	ECO Operation and Maintenance team	Monthly	No complaints from community members are submitted
- Straw stabilisation must be applied at a rate of one bale/10 m <sup>2</sup> and harrowed into the top 100 mm of top material, for all completed earthworks;	Contractor	Ensure that straw stabilisation is undertaken as per the listed requirements	During the Construction Phase	ECO	Monthly	Photographic record of all straw stabilisation undertaken
- For significant areas of excavation or exposed ground, dust suppression measures must be used to minimise the spread of dust.	Contractor	Appropriate dust suppressant measures are implemented	During the Construction Phase	ECO	Weekly	Photographic record of measures being implemented and the results thereof

### 5.21 Blasting

**Impact management outcome:** Impact to the environment is minimised through a safe blasting practice.

Impact Management Actions	Implementation			Monitoring		
	Responsible person	Method of implementation	Timeframe for implementation	Responsible person	Frequency	Evidence of compliance

- Any blasting activity must be conducted by a suitably licensed blasting contractor; and	Not Applicable – no blasting proposed					
- Notification of surrounding landowners, emergency services site personnel of blasting activity 24 hours prior to such activity taking place on Site.	Not Applicable – no blasting proposed					

## 5.22 Noise

**Impact Management outcome:** Unnecessary noise is prevented by ensuring that noise from construction activities is mitigated.

Impact Management Actions	Implementation			Monitoring		
	Responsible person	Method of implementation	Timeframe for implementation	Responsible person	Frequency	Evidence of compliance
- The Contractor must keep noise level within acceptable limits, Restrict the use of sound amplification equipment for communication and emergency only;	Contractor	Ensure that noise limits do not exceed acceptable limits and avoid the use of amplification communication	During the Construction Phase	ECO	Monthly, and as and when required	No complaints registered in this regard. No amplification equipment is used.
- All vehicles and machinery must be fitted with appropriate silencing technology and must be properly maintained;	Contractor	Provide and implement silencing technology	During the Construction Phase	ECO	Monthly, and as and when required	No complaints registered in this regard. Silencing technology is utilised.

<ul style="list-style-type: none"> <li>- Any complaints received by the Contractor regarding noise must be recorded and communicated. Where possible or applicable, provide transport to and from the site on a daily basis for construction workers;</li> </ul>	cEO	Update complaints register. Provide daily transport to and from site for employees	During the Construction Phase	ECO	Monthly, and as and when required	Complaints register provided by the cEO and proof of transportation services provided
<ul style="list-style-type: none"> <li>- Develop a Code of Conduct for the construction phase in terms of behaviour of construction staff. Operating hours as determined by the environmental authorisation are adhered to during the development phase. Where not defined, it must be ensured that development activities must still meet the impact management outcome related to noise management</li> </ul>	cEO and Contractor in consultation with the ECO	Compile a Code of Conduct for staff. Appropriate operating hours must be identified for the project	Pre-construction and Construction	ECO	Once, prior to the commencement of construction	No complaints registered in this regard.

### 5.23 Fire prevention

**Impact management outcome:** Prevention of uncontrollable fires.

Impact Management Actions	Implementation			Monitoring		
	Responsible person	Method of implementation	Timeframe for implementation	Responsible person	Frequency	Evidence of compliance

- Designate smoking areas where the fire hazard could be regarded as insignificant;	cEO / Contractor	Identify and demarcate through signage designated smoking areas	Pre-construction & Construction	ECO	Monthly	Photographic record of designated smoking area
- Firefighting equipment must be available on all vehicles located on site;	cEO / dEO in consultation with the Contractor	Provide all vehicles with firefighting equipment	Construction	ECO	Monthly	All vehicles are fitted with firefighting equipment and the details thereof are provided by the cEO
- The local Fire Protection Agency (FPA) must be informed of construction activities;	cEO in consultation with the ECO	Undertake formal consultation to inform the local FPA of the associated construction activities	Pre-construction	ECO	Once, during the commencement of the Construction Phase	Proof of consultation with the FPA
- Contact numbers for the FPA and emergency services must be communicated in environmental awareness training and displayed at a central location on site;	dEO / cEO / Contractor in consultation with the ECO	Develop environmental awareness training material which covers the contact numbers for the FPA and emergency services. Place the contact numbers for the FPA and emergency services at a	Pre-construction & Construction	ECO	Prior to the commencement of the environmental awareness training and once during the construction phase	Environmental awareness training material requirements checklist and photographic record of contact numbers on display



		visible and central location				
- Two-way swop of contact details between ECO and FPA.	ECO	Consultation between the ECO and FPA in order to exchange contact details	Pre-construction	Not Applicable		

#### 5.24 Stockpiling and stockpile areas

**Impact management outcome:** Erosion and sedimentation as a result of stockpiling are reduced.

Impact Management Actions	Implementation			Monitoring		
	Responsible person	Method of implementation	Timeframe for implementation	Responsible person	Frequency	Evidence of compliance
- All material that is excavated during the project development phase (either during piling (if required) or earthworks) must be stored appropriately on site in order to minimise impacts to watercourses, watercourses and water bodies;	Contractor	Identify and demarcate an appropriate location for the storage of excavated materials	Pre-construction & Construction	ECO	Monthly	Excavated material is not stored within sensitive environmental areas
- All stockpiled material must be maintained and kept clear of weeds and alien vegetation growth by undertaking regular weeding and control methods;	Contractor	Implement appropriate and sufficient maintenance on stockpiled material regularly	During the Construction Phase	ECO	Bi-weekly (every second month)	Stockpiled material is maintained sufficiently and is clear of weeds and alien vegetation

- Topsoil stockpiles must not exceed 2 m in height;	Contractor	Enforce limitations for the height of topsoil stockpiles	During the Construction Phase	ECO	Bi-weekly (every second month)	Topsoil stockpiles do not exceed 2m in height
- During periods of strong winds and heavy rain, the stockpiles must be covered with appropriate material (e.g. cloth, tarpaulin etc.);	Contractor	Appropriate material must be provided in order to cover stockpiles when required	During the Construction Phase	ECO	Monthly	Contractor to provide proof of availability of appropriate material to cover stockpiles when required
- Where possible, sandbags (or similar) must be placed at the bases of the stockpiled material in order to prevent erosion of the material.	Contractor	Sandbags must be provided in order to prevent erosion of stockpiled materials	During the Construction Phase	ECO	Monthly	Contractor to provide proof of availability of sandbags to prevent erosion of stockpiled materials

### 5.25 Finalising tower positions

**Impact management outcome:** No environmental degradation occurs as a result of the survey and pegging operations.

Impact Management Actions	Implementation			Monitoring		
	Responsible person	Method of implementation	Timeframe for implementation	Responsible person	Frequency	Evidence of compliance
- No vegetation clearing must occur during survey and pegging operations;	Contractor	Implement restrictions in	Pre-construction	ECO	Weekly	Contractor to provide

		terms of vegetation clearing during the survey and pegging operations				photographic proof that no vegetation has been cleared
- No new access roads must be developed to facilitate access for survey and pegging purposes;	Contractor	Restrict the development of new access roads for survey and pegging purposes	Pre-construction	ECO	Weekly	Contractor to provide photographic proof that no new roads have been developed
- Project manager, botanical specialist and contractor to agree on final tower positions based on survey within assessed and approved areas;	DPM, Suitably Qualified Specialist and Contractor	Undertake consultation between the relevant responsible people and finalise the tower positions for the power line	Pre-construction	ECO	Once the final tower positions have been finalised and agreed upon	Provision of final tower positions to the ECO
- The surveyor is to demarcate (peg) access roads/tracks in consultation with ECO. No deviations will be allowed without the prior written consent from the ECO.	Surveyor in consultation with the ECO	Undertake consultation between the surveyor and the ECO	Pre-construction	ECO	Weekly	Consultation with the ECO regarding the distribution of pegs.

### 5.26 Excavation and Installation of foundations

**Impact management outcome:** No environmental degradation occurs as a result of excavation or installation of foundations.

Impact Management Actions	Implementation	Monitoring
---------------------------	----------------	------------

	Responsible person	Method of implementation	Timeframe for implementation	Responsible person	Frequency	Evidence of compliance
- All excess spoil generated during foundation excavation must be disposed of in an appropriate manner and at a recognised disposal site, if not used for backfilling purposes;	Contractor	Use a licensed waste disposal facility for the disposal of excess spoil	During the Construction Phase	ECO	Monthly	Certificates obtained for the disposal of excess spoil at a licensed waste disposal facility
- Spoil can however be used for landscaping purposes and must be covered with a layer of 150 mm topsoil for rehabilitation purposes;	Contractor	Spoil used for landscaping must be applied as per the listed requirements	Construction and Rehabilitation	ECO	Monthly	Photographic record of spoil used for landscaping purposes as well as feedback from the contractor
- Management of equipment for excavation purposes must be undertaken in accordance with <b>Section 5.18: Workshop equipment maintenance and storage</b> ; and	Contractor	Undertake the management of equipment for excavation as per the requirements of section 5.18	During the Construction Phase	ECO	Monthly	Management of equipment is undertaken in line with the requirements of section 5.18
- Hazardous substances spills from equipment must be managed in accordance with <b>Section 5.17: Hazardous substances</b> .	Contractor	Undertake the management of hazardous substances spills from equipment as per the requirements of	During the Construction Phase	ECO	Monthly	Management of hazardous substances spills from equipment is

		section 5.17				undertaken in line with the requirements of section 5.17
– Batching of cement to be undertaken in accordance with <b>Section 5.19 : Batching plants;</b>	Not Applicable- No batching plant required for the installation of the overhead power line.					
– Residual cement must be disposed of in accordance with <b>Section 5.8: Solid and hazardous waste management.</b>	Contractor	Undertake the disposal of residual cement as per the requirements of section 5.8	During the Construction Phase	ECO	Monthly	The disposal of residual cement is undertaken in line with section 5.8.

### 5.27 Assembly and erecting towers

**Impact management outcome:** No environmental degradation occurs as a result of assembly and erecting of towers.

Impact Management Actions	Implementation	Monitoring
---------------------------	----------------	------------

	Responsible person	Method of implementation	Timeframe for implementation	Responsible person	Frequency	Evidence of compliance
<ul style="list-style-type: none"> <li>- Prior to erection, assembled towers and tower sections must be stored on elevated surface (suggest wooden blocks) to minimise damage to the underlying vegetation;</li> <li>-</li> </ul>	Contractor	Provide the necessary materials for the elevated surface, where towers are to be placed on indigenous vegetation	During the Construction Phase	ECO	Weekly	Implementation of elevated surface and photographic record thereof
<ul style="list-style-type: none"> <li>- In sensitive areas, tower assembly must take place off-site or away from sensitive positions;</li> </ul>	Contractor in consultation with the cEO and the ECO	Identify sensitive areas to be avoided by tower assembly and ensure that the areas are not infringed upon	Pre-construction & Construction	ECO	Weekly	Tower assembly is undertaken outside of sensitive areas
<ul style="list-style-type: none"> <li>- The crane used for tower assembly must be operated in a manner which minimises impact to the environment;</li> </ul>	Contractor in consultation with the cEO and the ECO	Ensure that no impact to the environment is imposed during the operation of the crane	Pre-construction & Construction	ECO	Weekly	No environmental damages incurred as a result of the crane.
<ul style="list-style-type: none"> <li>- The number of crane trips to each site must be minimised;</li> </ul>	Contractor in consultation with the cEO and the ECO	Ensure that the utilisation of the crane is maximised when on site.	Pre-construction & Construction	ECO	Weekly	Few crane trips to each site observed.
<ul style="list-style-type: none"> <li>- Wheeled cranes must be utilised in preference to tracked cranes;</li> </ul>	Contractor	Ensure wheeled cranes are utilised.	Pre-construction & Construction	ECO	Weekly	Wheeled cranes observed on site.

- Consideration must be given to erecting towers by helicopter or by hand where it is warranted to limit the extent of environmental impact;	Contractor	Contractor to undertake erecting of towers in an environmentally acceptable manner	During the Construction Phase	ECO	Monthly	No unacceptable environmental impacts occur with the erecting of the towers
- Access to tower positions to be undertaken in accordance with access requirements in specified in Section 8.4: Access Roads;	Contractor	Undertake access to tower positions as per the requirements of section 5.4	During the Construction Phase	ECO	Monthly	Access to tower positions are undertaken as per the requirements of section 5.4
- Vegetation clearance to be undertaken in accordance with general vegetation clearance requirements specified in Section 8.10: Vegetation clearing;	Contractor	Undertake vegetation clearance as per the requirements of section 5.10	During the Construction Phase	ECO	Weekly	Vegetation clearance is undertaken as per the requirements of section 5.10
- No levelling at tower sites must be permitted unless approved by the Development Project Manager or Developer Site Supervisor;	Contractor in consultation with the DPM and DSS	Written permission for levelling at tower sites, if required, must be obtained from the DPM and DSS prior to the undertaking of any levelling activities	During the Construction Phase	ECO	Monthly, and as and when required	Written permission from the DPM and DSS provided to the Contractor

- Topsoil must be removed separately from subsoil material and stored for later use during rehabilitation of such tower sites;	Contractor	Implement appropriate measures to ensure that topsoil is removed from subsoil material	Construction and Rehabilitation	ECO	Weekly, and as and when required	Proof of appropriate measures implemented must be provided by the Contractor
- Topsoil must be stored in heaps not higher than 1m to prevent destruction of the seed bank within the topsoil;	Contractor	Implement the listed requirements for the storage of topsoil	During the Construction Phase	ECO	Weekly	Topsoil is stored as per the listed requirements
- Excavated slopes must be no greater than 1:3, but where this is unavoidable, appropriate measures must be undertaken to stabilise the slopes;	Contractor	Implement the listed requirements for the excavation of slopes	During the Construction Phase	ECO	Weekly	Excavation of slopes is undertaken as per the listed requirements
- Fly rock from blasting activity must be minimised and any pieces greater than 150 mm falling beyond the Working Area, must be collected and removed;	Not Applicable - no blasting activities is proposed					
- Only existing disturbed areas are utilised as spoil areas;	Contractor in consultation with the ECO	Identify, demarcate and use existing disturbed areas for spoil areas	Pre-construction & Construction	ECO	Weekly	Only identified disturbed areas are used as spoil areas
- Drainage is provided to control groundwater exit gradient with the spill areas such that migration of fines is kept to a minimum;	Not Applicable					
- Surface water runoff is appropriately channeled through or around spoil areas;	DPM and Contractor	Design and implement appropriate surface runoff measures for spoil areas	Pre-construction & Construction	ECO	Once, during the construction of the surface	Implementation of surface runoff measures



					runoff measures	through and/or around spoil areas
- During backfilling operations, care must be taken not to dump the topsoil at the bottom of the foundation and then put spoil on top of that;	Contractor	Develop and implement backfilling procedures which ensures that topsoil is not placed at the bottom of foundations.	Pre-construction & Construction	ECO	Weekly	Backfilling operations are undertaken as per the procedures developed
- The surface of the spoil is appropriately rehabilitated in accordance with the requirements specified in Section 5.29: Landscaping and rehabilitation;	Contractor	Rehabilitation of the surface spoil must be undertaken in accordance with the requirements of section 5.29	Rehabilitation	ECO	Weekly	Rehabilitation of the surface spoil is undertaken as per the requirements of section 5.29
- The retained topsoil must be spread evenly over areas to be rehabilitated and suitably compacted to effect re-vegetation of such areas to prevent erosion as soon as construction activities on the site is complete. Spreading of topsoil must not be undertaken at the beginning of the dry season.	Contractor	Ensure that topsoil is spread evenly and compacted appropriately. This must be undertaken outside of the start of the dry season	Rehabilitation	ECO	Weekly	Proof that topsoil has been spread evenly and compacted correctly must be provided by the Contractor/cEO. Proof that the activities were undertaken

						outside of the start of the dry season must be provided by the Contractor
--	--	--	--	--	--	---

### 5.28 Stringing

**Impact management outcome:** No environmental degradation occurs as a result of stringing.

Impact Management Actions	Implementation			Monitoring		
	Responsible person	Method of implementation	Timeframe for implementation	Responsible person	Frequency	Evidence of compliance
<ul style="list-style-type: none"> <li>Where possible, previously disturbed areas must be used for the siting of winch and tensioner stations. In all other instances, the siting of the winch and tensioner must avoid Access restricted areas and other sensitive areas;</li> </ul>	Contractor in consultation with the ECO	Identify and demarcate areas appropriate for the siting of winch and tensioner stations which does not infringe on access restricted areas or environmentally sensitive areas	Pre-construction & Construction	ECO	Weekly	Winch and tensioner stations are located outside of identified sensitive areas
<ul style="list-style-type: none"> <li>The winch and tensioner station must be equipped with drip trays in order to contain any fuel, hydraulic fuel or oil spills and leaks;</li> </ul>	Contractor	Provide sufficient drip trays	During the Construction	ECO	Weekly	Sufficient drip trays are

			Phase			available for the winch and tensioner stations and no spills occur
- Refueling of the winch and tensioner stations must be undertaken in accordance with Section 5.17: Hazardous substances;	Contractor	The refuelling of winch and tensioner stations must be undertaken as per the requirements of section 5.17	During the Construction Phase	ECO	Monthly	The refuelling of winch and tensioner stations is undertaken as per the requirements of section 5.17
- In the case of the development of overhead transmission and distribution infrastructure, a one metre "trace-line" may be cut through the vegetation for stringing purposes only and no vehicle access must be cleared along "trace-lines". Vegetation clearing must be undertaken by hand, using chainsaws and hand held implements, with vegetation being cut off at ground level. No tracked or wheeled mechanised equipment must be used;	Contractor	Develop and implement procedures for implementation for vegetation clearing during stringing in line with the specification.	Pre-construction & Construction	ECO	Once, prior to the commencement of construction and weekly during stringing	Implementation of the procedures put in place and proof thereof from the Contractor
- Alternative methods of stringing which limit impact to the environment must always be considered e.g. by hand or by using a helicopter;	Contractor	Identify and implement the stringing method with the least environmental impact	During the Construction Phase	ECO	Weekly	Implementation of identified method of stringing with the least environmental impact

<ul style="list-style-type: none"> <li>- Where the stringing operation crosses a public or private road or railway line, the necessary scaffolding/ protection measures must be installed to facilitate access. If, for any reason, such access has to be closed for any period(s) during development, the persons affected must be given reasonable notice, in writing;</li> </ul>	Contractor	Identify prior to construction areas where protection measures will be required during stringing. Where access is to be restricted timeous written notice must be provided to the affected parties	Pre-construction & Construction	ECO	Monthly, and as and when required	Proof of implementation of protection measures and proof of written notice to affected parties must be provided by the Contractor
<ul style="list-style-type: none"> <li>- No services (electrical distribution lines, telephone lines, roads, railways lines, pipelines fences etc.) must be damaged because of stringing operations. Where disruption to services is unavoidable, persons affected must be given reasonable notice, in writing;</li> </ul>	Contractor in consultation with the cEO	Avoid the damaging or disturbance of existing services. Where services will be disrupted timeous notice must be provided to the affected parties	During the Construction Phase	ECO	Monthly, and as and when required	No disruption of services occurs. Where disruption occurs proof of written notice to affected parties must be provided by the Contractor
<ul style="list-style-type: none"> <li>- Where stringing operations cross cultivated land, damage to crops is restricted to the minimum required to conduct stringing operations, and reasonable notice (10 work days minimum), in writing, must be provided to the landowner;</li> </ul>	Not Applicable					
<ul style="list-style-type: none"> <li>- Necessary scaffolding protection measures must be installed to prevent damage to the structures supporting certain high value agricultural areas such as vineyards, orchards, nurseries.</li> </ul>	Not Applicable					

## 5.29 Socio-economic

**Impact management outcome:** Socio-economic development is enhanced.

Impact Management Actions	Implementation			Monitoring		
	Responsible person	Method of implementation	Timeframe for implementation	Responsible person	Frequency	Evidence of compliance
- Develop and implement communication strategies to facilitate public participation;	dEO / cEO	Identify and implement appropriate strategies for communication with the communities through consideration of the community needs	Pre-construction & Construction	ECO	Once, prior to the commencement of construction and monthly during the construction	Communication is undertaken as per the identified strategies and no complaints are submitted regarding communication
- Develop and implement a collaborative and constructive approach to conflict resolution as part of the external stakeholder engagement process;	Contractor	Development and implement a Grievance Mechanism which considers the community needs and provides procedures for conflict resolution	Pre-construction & Construction	ECO	Once, prior to the commencement of construction and monthly during the construction	Conflict resolution is undertaken in line with the requirements of the Grievance Mechanism. No complaints on conflict

						resolution is submitted by the community
- Sustain continuous communication and liaison with neighboring owners and residents	Contractor	Development and implement and Grievance Mechanism provides procedures for communication / liaison with neighbouring landowners and residents	Pre-construction & Construction	ECO	Once, prior to the commencement of construction and monthly during the construction	Communication / liaison with neighbouring landowners and residents are undertaken in line with the requirements of the Grievance Mechanism. No complaints on communication with neighbouring landowners and residents is submitted
- Create work and training opportunities for local stakeholders; and	Contractor	Develop and implement a "locals first" policy for the provision of employment opportunities	Pre-construction & Construction	ECO	Once, prior to the commencement of construction and monthly during the	The "locals first" policy is considered in terms of the employment and training opportunities

					construction	
<ul style="list-style-type: none"> <li>Where feasible, no workers, with the exception of security personnel, must be permitted to stay over-night on the site. This would reduce the risk to local farmers.</li> </ul>	Not Applicable - no workers, other than security is proposed to stay on-site over night					

### 5.30 Temporary closure of site

**Impact management outcome:** Minimise the risk of environmental impact during periods of site closure greater than five days.

Impact Management Actions	Implementation			Monitoring		
	Responsible person	Method of implementation	Timeframe for implementation	Responsible person	Frequency	Evidence of compliance
<ul style="list-style-type: none"> <li>Bunds must be emptied (where applicable) and need to be undertaken in accordance with the impact management actions included in <b>sections 5.17: management of hazardous substances</b> and <b>5.18 workshop, equipment maintenance and storage</b>;</li> </ul>	Contractor	Regular emptying of the bunds must be undertaken. This must be undertaken as per the requirements listed in sections 5.17 and 5.18	During the Construction Phase	ECO	Prior to site closure for more than 05 days	Bunds are emptied as per the requirements listed under sections 5.17 and 5.18
<ul style="list-style-type: none"> <li>Hazardous storage areas must be well ventilated;</li> </ul>	Contractor	Install appropriate ventilation in all hazardous	During the Construction Phase	ECO	Prior to site closure for more	Effective ventilation is installed in hazardous

		storage areas			than 05 days	storage areas
- Fire extinguishers must be serviced and accessible. Service records to be filed and audited at last service;	Contractor / cEO	Ensure fire extinguishers are serviced, as required and are easily accessible with appropriate signage indicating location. Ensure service records and kept up to date and filed	During the Construction Phase	ECO	Prior to site closure for more than 05 days	Signage placed indicating location of fire extinguishers and service records
- Emergency and contact details displayed must be displayed;	Contractor / cEO	Place emergency and contact details which are readily available and easily accessible	During the Construction Phase	ECO	Prior to site closure for more than 05 days	Photographic proof of contact details on display
- Security personnel must be briefed and have the facilities to contact or be contacted by relevant management and emergency personnel;	Contractor in consultation with the ECO	Hold a workshop with all security personnel to provide a brief of the project and security requirements. Provide facilities in order to contact management and emergency personnel	Pre-construction & construction	ECO	Prior to site closure for more than 05 days	Proof of the workshop held must be kept on file by the contractor.
- Night hazards such as reflectors, lighting, traffic signage etc. must have been checked;	Contractor	Regular checks of night hazards must be undertaken	During the Construction Phase	ECO	Prior to site closure for more than 05 days	Proof of checks of night hazards must be



						provided by the contractor
- Fire hazards identified and the local authority must have been notified of any potential threats e.g. large brush stockpiles, fuels etc.;	Contractor in consultation with the ECO	Identify any potential fire hazards and notify the relevant local authority	During the Construction Phase	ECO	Prior to site closure for more than 05 days	Proof of notification of the fire hazards to the local authority must be provided by the Contractor
- Structures vulnerable to high winds must be secured;	Contractor	Ensure structures vulnerable to wind are secure prior to site closure	During the Construction Phase	ECO	Prior to site closure for more than 05 days	Structures vulnerable to wind are secured prior to site closure
- Wind and dust mitigation must be implemented;	Contractor	Implement wind and dust mitigation prior to site closure	During the Construction Phase	ECO	Prior to site closure for more than 05 days	Wind and dust mitigation is implemented prior to site closure
- Cement and materials stores must have been secured;	Contractor	Ensure cement and material stores are secured prior to site closure	During the Construction Phase	ECO	Prior to site closure for more than 05 days	Cement and material stores are secured prior to site closure
- Toilets must have been emptied and secured;	Contractor	Ensure toilets are emptied and secured prior to site closure	During the Construction Phase	ECO	Prior to site closure for more than 05 days	Toilets are emptied and secured prior to site closure
- Refuse bins must have been emptied and secured;	Contractor	Ensure refuse bins are emptied	During the Construction	ECO	Prior to site	refuse bins are

		and secured prior to site closure	Phase		closure for more than 05 days	emptied and secured prior to site closure
- Drip trays must have been emptied and secured.	Contractor	Ensure drip trays are emptied and secured prior to site closure	During the Construction Phase	ECO	Prior to site closure for more than 05 days	Drip trays are emptied and secured prior to site closure

### 5.31 Landscaping and rehabilitation

**Impact management outcome:** Areas disturbed during the development phase are returned to a state that approximates the original condition.

Impact Management Actions	Implementation			Monitoring		
	Responsible person	Method of implementation	Timeframe for implementation	Responsible person	Frequency	Evidence of compliance
- All areas disturbed by construction activities must be subject to landscaping and rehabilitation; All spoil and waste must be disposed to a registered waste site and certificates of disposal provided;	Contractor	Develop and implement a rehabilitation plan for the rehabilitation of all disturbed areas. Dispose of all spoil and waste at a licensed waste disposal facility	Pre-construction & Rehabilitation	ECO	Weekly	Rehabilitation of the disturbed areas is undertaken as per the rehabilitation plan. All certificates of waste disposal at licensed facilities are available.

- All slopes must be assessed for contouring, and to contour only when the need is identified in accordance with the Conservation of Agricultural Resources Act, No 43 of 1983	Contractor in consultation with the ECO	Assess all slopes and determine whether contouring is required	Rehabilitation	ECO	Weekly	All slopes are assessed and contoured as required
- All slopes must be assessed for terracing, and to terrace only when the need is identified in accordance with the Conservation of Agricultural Resources Act, No 43 of 1983;	Contractor in consultation with the ECO	Assess all slopes and determine whether terracing is required	Rehabilitation	ECO	Weekly	All slopes are assessed and terraced as required
- Berms that have been created must have a slope of 1:4 and be replanted with indigenous species and grasses that approximates the original condition;	Contractor	Ensure all berms have a slope of 1:4 and is replanted with indigenous species and grasses	Rehabilitation	ECO	Weekly	All berms have a slope of 1:4 and is replanted with indigenous species and grasses
- Where new access roads have crossed cultivated farmlands, that lands must be rehabilitated by ripping which must be agreed to by the holder of the EA and the landowners;	Not applicable					
- Rehabilitation of tower sites and access roads outside of farmland;	Not applicable					
- Indigenous species must be used for with species and/grasses to where it compliments or approximates the original condition;	Contractor	Make use of indigenous species for rehabilitation	Rehabilitation	ECO	Weekly	Indigenous species are used for rehabilitation
- Stockpiled topsoil must be used for rehabilitation (refer to Section <b>5.24: Stockpiling and stockpiled areas</b> );	Contractor	Ensure stockpiled topsoil is used as per the requirements listed under section 5.24	Rehabilitation	ECO	Weekly	Stockpiled topsoil is used as per the requirements listed under section 5.24
- Stockpiled topsoil must be evenly spread so as to facilitate seeding and minimise loss of soil due to erosion;	Contractor	Ensure that topsoil is spread	Rehabilitation	ECO	Weekly	Topsoil is spread

		evenly				evenly
- Before placing topsoil, all visible weeds from the placement area and from the topsoil must be removed;	Contractor	Remove all visible weeds from placement area and topsoil before spreading the topsoil	Rehabilitation	ECO	Weekly	No weeds are visible in the placement area or the topsoil
- Subsoil must be ripped before topsoil is placed;	Contractor	Undertake the ripping of subsoil prior to the spreading of topsoil	Rehabilitation	ECO	Weekly	Subsoil is ripped before topsoil is placed
- The rehabilitation must be timed so that rehabilitation can take place at the optimal time for vegetation establishment;	Contractor	Plan the timeframe for rehabilitation in order to undertake vegetation planting during the optimal time for vegetation establishment	Rehabilitation	ECO	At the start of rehabilitation to confirm correct timeframe	Rehabilitation is undertaken during the optimal time
- Where impacted through construction related activity, all sloped areas must be stabilised to ensure proper rehabilitation is effected and erosion is controlled ;	Contractor	All disturbed slope areas must be stabilised	Rehabilitation	ECO	Weekly	Disturbed slopes are stabilised sufficiently
- Sloped areas stabilised using design structures or vegetation as specified in the design to prevent erosion of embankments. The contract design specifications must be adhered to and implemented strictly;	Contractor	Stabilise slopes as per the design specifications	Pre-construction & Rehabilitation	ECO	Weekly	Slopes are stabilised as per the design specifications
- Spoil can be used for backfilling or landscaping as long as it is covered by a minimum of 150 mm of topsoil.	Contractor	Spoil used for landscaping must be applied as per the listed requirements	Rehabilitation	ECO	Weekly	Photographic record of spoil used for landscaping purposes as well

						as feedback from the contractor
<ul style="list-style-type: none"> <li>- Where required, re-vegetation including hydro-seeding can be enhanced using a vegetation seed mixture as described below. A mixture of seed can be used provided the mixture is carefully selected to ensure the following: <ul style="list-style-type: none"> <li>a) Annual and perennial plants are chosen;</li> <li>b) Pioneer species are included;</li> <li>c) Species chosen must be indigenous to the area with the seeds used coming from the area;</li> <li>d) Root systems must have a binding effect on the soil;</li> <li>e) The final product must not cause an ecological imbalance in the area</li> </ul> </li> </ul>	Contractor in consultation with a suitably qualified specialist	Make use of a suitable vegetation seed mixture should enhancement be required	Rehabilitation	ECO	As and when required	Use of a suitable vegetation seed mixture if required

## 6 ACCESS TO THE GENERIC EMPr

Once completed and signed, to allow the public access to the generic EMPr, the holder of the EA must make the EMPr available to the public in accordance with the requirements of regulation 26(h) of the EIA Regulations.

## **PART B: SECTION 2**

### **7 SITE SPECIFIC INFORMATION AND DECLARATION**

#### **7.1 Sub-section 1: contact details and description of the project**

##### 7.1.1 Details of the applicant:

Name of applicant: Boitumelo Solar Power Plant (RF) (Pty) Ltd.

Tel No: +46 76 941 8927 / +27 78 335 9550

Fax No: +27862 731 614

Postal Address: PO Box 785553, Sandton

Physical Address: 2<sup>nd</sup> Floor, West Tower, Maude Street, Nelson Mandela Square,  
Sandton, 2196

##### 7.1.2 Details and expertise of the EAP:

Name of EAP: Lisa Opperman

Tel No: 084 920 3111

E-mail address: [lisa@environamics.co.za](mailto:lisa@environamics.co.za)

7.1.3 Project name: The proposed Boitumelo Solar Power Plant near Lichtenburg, North West Province.

##### 7.1.4 Description of the project:

The activity entails the development of a 150MW photovoltaic solar facility and associated infrastructure on the Portion 4 of the farm Houthaaldoors 2, Registration Division IP, North West Province situated within the Ditsobotla Local Municipality area of jurisdiction. The town of Lichtenburg is located approximately 15km south of the proposed development. The total footprint of the project will approximately be 300 hectares (including supporting infrastructure on site and the associated grid connection). The site was identified as being highly desirable due to its suitable climatic conditions, topography (i.e. in terms of slope), environmental conditions (i.e. agricultural potential, ecological sensitivity and archaeology), proximity to a grid connection point (i.e. for the purpose of electricity evacuation), as well as site access via a main road (i.e. to facilitate the movement of machinery, equipment, infrastructure and people during the construction phase).

Connecting the Boitumelo PV solar energy facility to the electrical grid requires transformation of the voltage from 480V to 33kV to 132kV. The normal components and dimensions of a distribution rated electrical substation will be required. Output voltage from the inverter is 480V and this is fed into step up transformers to 132kV. An onsite substation will step the voltage up to 132kV, after which the power will be evacuated into the national grid. Whilst Boitumelo Solar Power Plant (RF) (Pty) Ltd. has not yet received a cost estimate letter from Eskom, it is expected that generation from the facility will tie in with Watershed 275/132/88 MTS Substation. The Project will inject up to 100MW into the National Grid. The installed capacity will be approximately 150MW.

One route is proposed from the onsite substation to the collector station situated on the property. Whereas two possible connection corridor routes are proposed from the collector station to the Watershed 275/132/88 MTS Substation. Within the preferred corridor (South east of farm) a new line of approximately 12km will be constructed to the Watershed MTS or alternatively, one of the existing Eskom lines will be upgraded. For the alternative corridor (South west of the farm) a new line of approximately 14km will be constructed to the Watershed MTS. The proposed power line was assessed within a 100m wide corridor and where existing lines are located, approximately 150m. The area surrounding the substation was also assessed.

The minimum vertical clearance to buildings, poles and structures not forming part of the power line must be 3.8m, while the minimum vertical clearance between the conductors and the ground is 6.7m. The minimum distance between trees and shrubs and any bare phase conductor of a 132kV power line must be 4m, allowing for the possible sideways movement and swing of both the power line conductor and the tree or shrub. The structure to be utilised for the power line towers will be informed by the local geotechnical and topographical conditions as well as by specific requirements from Eskom.

Construction of the proposed power line will take approximately 12 - 15 months to complete and, on completion, will be handed over to Eskom Holdings Soc Ltd. to operate and maintain.

#### 7.1.5 Project location:

NO	FARM NAME( if applicable)	FARM NUMBER (if applicable)	PORTION NAME	PORTION NUMBER
1	Houthaaldoorns	2	Portion	4
2	Zamekomst	4	Portion	2
3	Houthaalbomen	31	Portion	23
4	Lichtenburg Town and Townlands	27	Portion	10
5	Farm Lichtenburg Town and Townlands	27	R/E of Portion 1	R/E / 1
6	Priem	30	R/E	R/E
7	Houthaalboomen	31	Portion	25
8	Houthaaldoorns	2	R/E	R/E
9	Houthaaldoorns	2	Portion	3
10	Houthaalboomen	31	Portion	2
11	Houthaalboomen	31	Portion	3
12	Houthaalboomen	31	Portion	4
13	Houthaalboomen	31	Portion	5
14	Houthaalboomen	31	Portion	6
15	Houthaalboomen	31	Portion	7
16	Houthaalboomen	31	Portion	8
17	Houthaalboomen	31	Portion	9
18	Talene	25	Portion	1
19	Talene	25	Portion	2
20	Talene	25	Portion	3
21	Talene	25	Portion	4
<b>Power Line Corridor Coordinates</b>				
<b>100m wide Power Line Corridor</b>	1	26° 2'35.50"S	26° 6'47.94"E	
	2	26° 2'34.56"S	26° 6'50.08"E	
	3	26° 2'34.76"S	26° 6'55.07"E	

<b>(preferred alternative)</b>	4	26° 2'24.56"S	26° 7'18.91"E
	5	26° 2'49.60"S	26° 7'24.23"E
	6	26° 3'8.11"S	26° 7'28.02"E
	7	26° 3'10.90"S	26° 7'33.00"E
	8	26° 4'6.40"S	26° 7'57.51"E
	9	26° 4'59.02"S	26° 8'21.20"E
	10	26° 5'17.00"S	26° 8'29.28"E
	11	26° 5'15.25"S	26° 8'37.08"E
	12	26° 5'21.07"S	26° 8'49.76"E
	13	26° 5'23.69"S	26° 8'49.58"E
	14	26° 5'34.71"S	26° 8'42.64"E
	15	26° 5'35.24"S	26° 8'40.64"E
	16	26° 5'32.08"S	26° 8'34.54"E
	17	26° 5'30.03"S	26° 8'35.78"E
<b>100m wide Power Line Corridor (alternative 1)</b>	1	26° 2'37.79"S	26° 6'44.20"E
	2	26° 2'43.23"S	26° 6'35.24"E
	3	26° 3'0.85"S	26° 5'57.03"E
	4	26° 3'12.72"S	26° 5'28.82"E
	5	26° 3'26.15"S	26° 5'34.50"E
	6	26° 3'35.68"S	26° 5'38.57"E
	7	26° 3'57.10"S	26° 5'47.97"E
	8	26° 4'21.78"S	26° 5'58.74"E
	9	26° 4'47.41"S	26° 6'10.06"E
	10	26° 5'25.25"S	26° 6'26.64"E
	11	26° 5'39.89"S	26° 6'33.12"E
	12	26° 5'36.58"S	26° 6'46.37"E
	13	26° 5'30.91"S	26° 7'8.50"E
	14	26° 5'23.41"S	26° 7'35.25"E
15	26° 5'16.82"S	26° 7'58.68"E	
16	26° 5'18.77"S	26° 8'4.85"E	
17	26° 5'30.18"S	26° 8'23.90"E	
18	26° 5'28.12"S	26° 8'31.23"E	

#### 7.16 Preliminary technical specification of the overhead transmission and distribution:

- Length: Option 1 ~ 12 km or Option 2 ~ 14 km
- Tower parameters :
  - Number and types of towers: Information not available at this stage
  - Tower spacing (mean and maximum): Power line towers (or pylons) are an average distance of 200m apart but can exceed 500m depending on the topography and terrain to be spanned.
  - Tower height (lowest, mean and height): Up to 32m



- Conductor attachment height (mean): Information not available at this stage
- Minimum ground clearance: Information not available at this stage

## **7.2 Sub-section 2: Development footprint site map**

This sub-section must include a map of the site sensitivity overlaid with the preliminary infrastructure layout. The sensitivity map must be prepared from the national web based environmental screening tool, when available for compulsory use at: <https://screening.environment.gov.zg/screeningtool>. The sensitivity map shall identify the nature of each sensitive feature e.g. raptor nest, threatened plant species, archaeological site, etc. Sensitivity maps shall identify features both within the planned working area and any known sensitive features in the surrounding landscape. The overhead transmission and distribution profile shall be illustrated at an appropriate resolution to enable fine scale interrogation. It is recommended that <20 km of overhead transmission and distribution length is illustrated per page in A3 landscape format. Where considered appropriate, photographs of sensitive features in the context of tower positions shall be used.

**It must be note that the maps provided below relate to the larger solar power plant which the power line is associated with.**

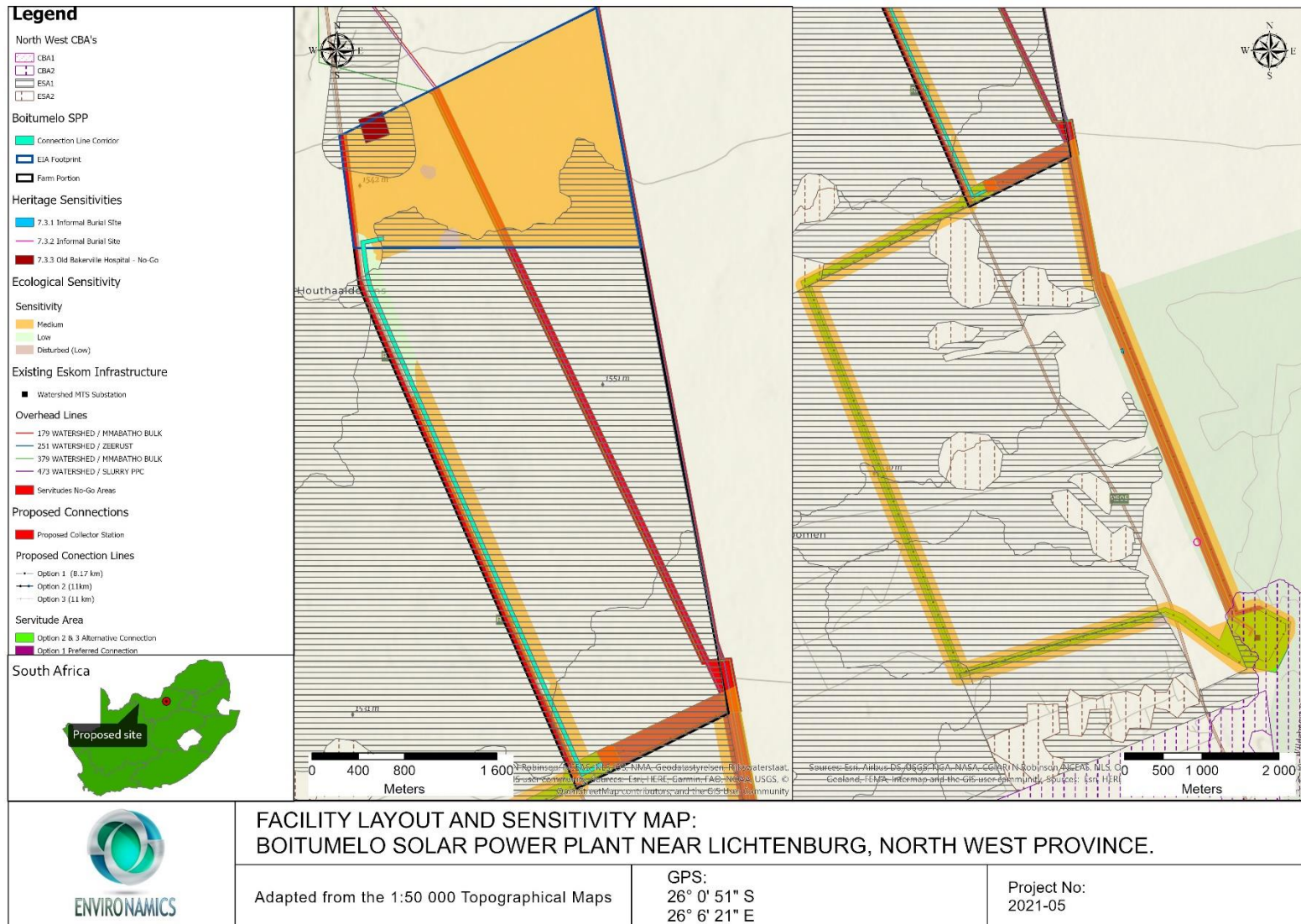


Figure 1: Environmental sensitivity map of the Boitumelo Solar Power Plant

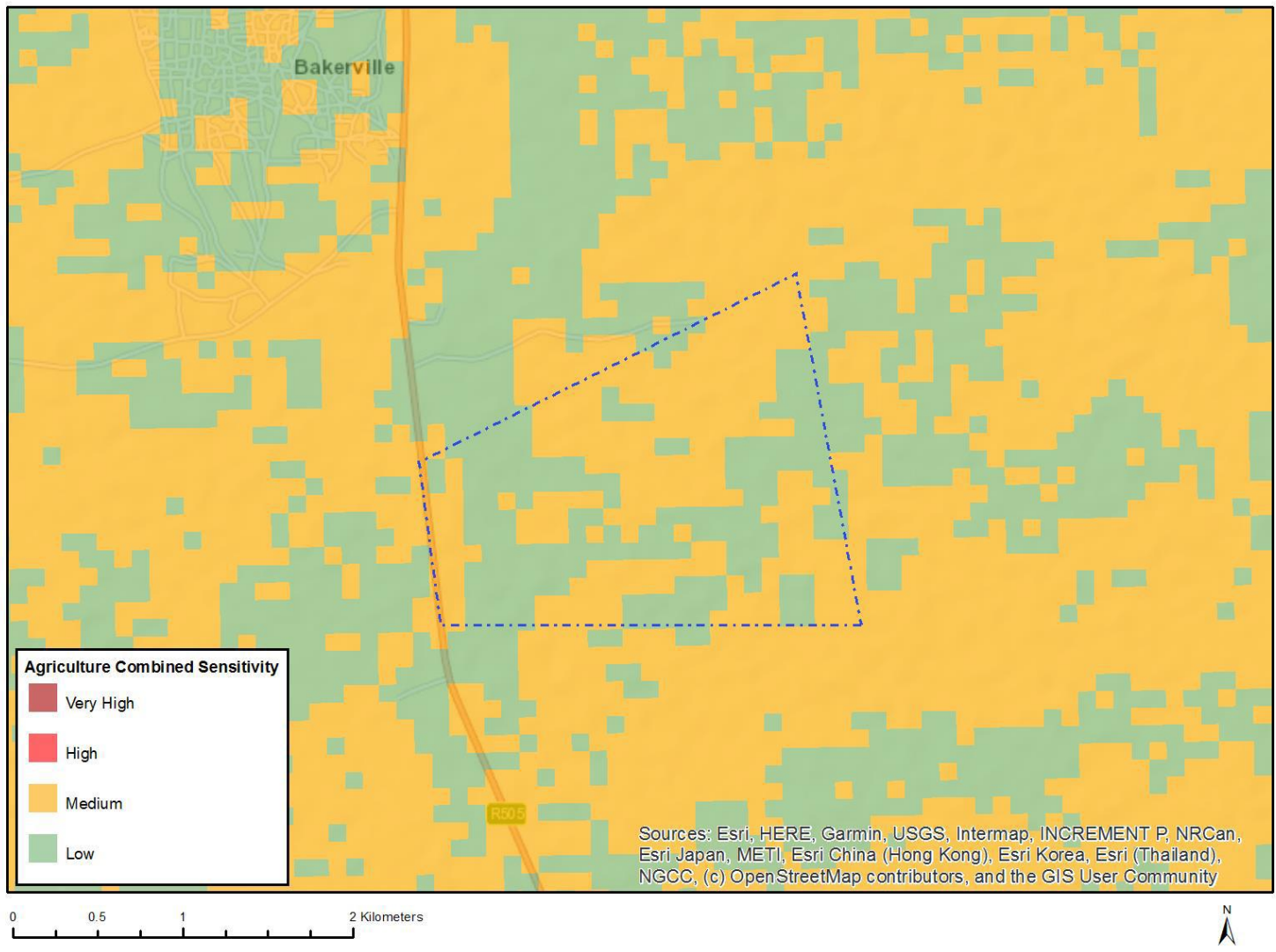


Figure 2: Map of the relative agricultural theme sensitivity

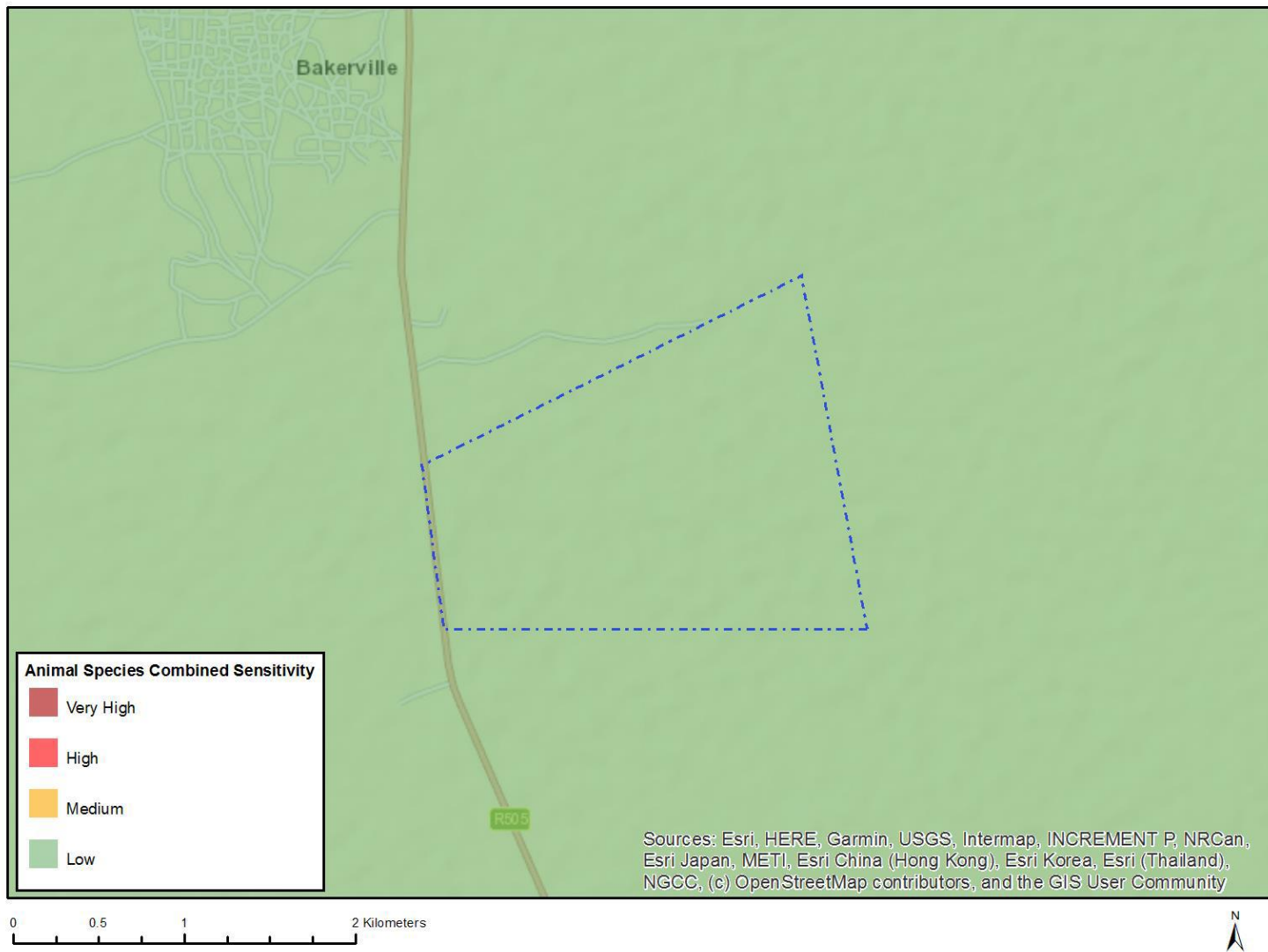


Figure 3: Map of the relative animal species theme sensitivity

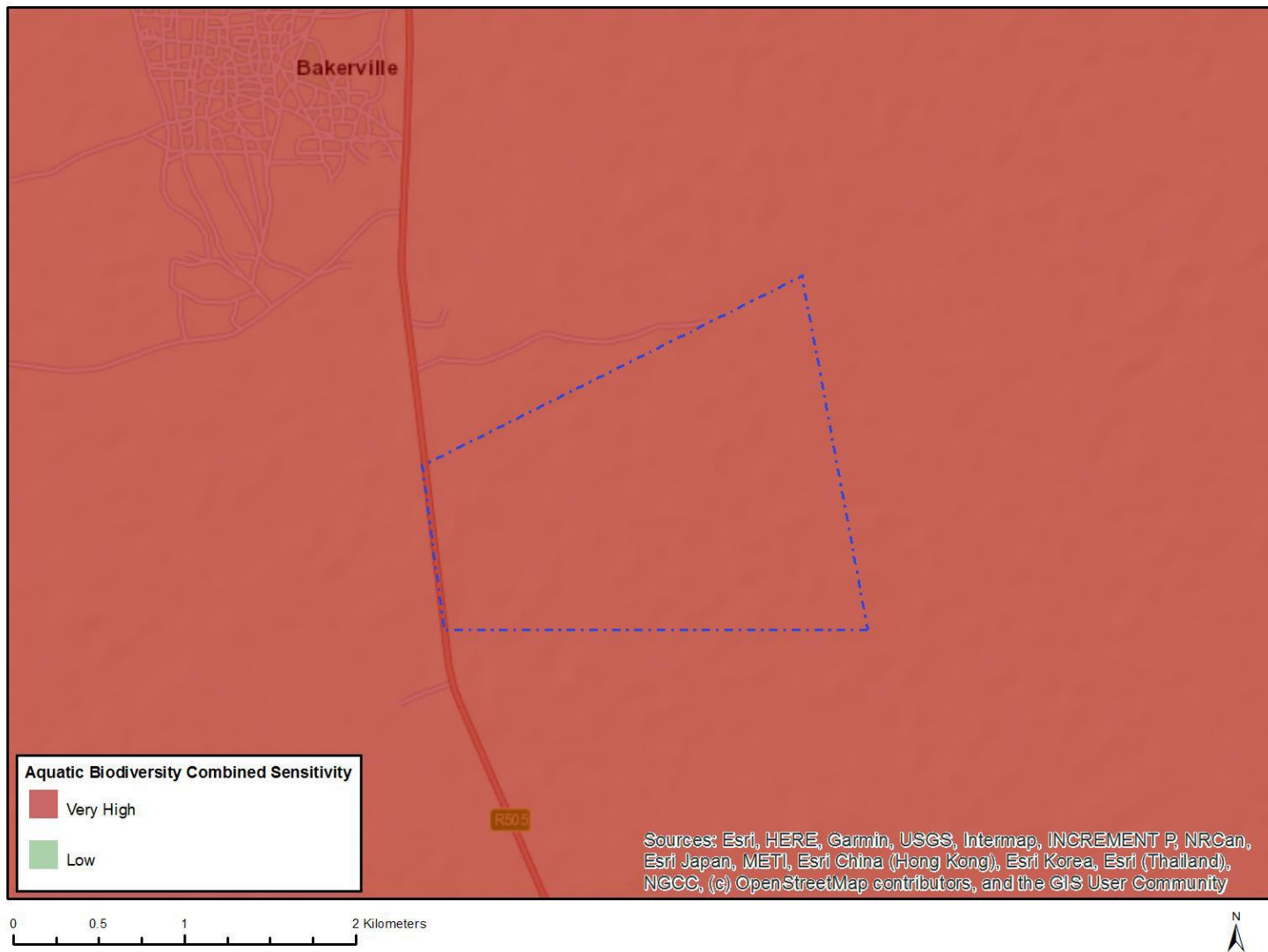


Figure 4: Map of the relative aquatic biodiversity theme sensitivity

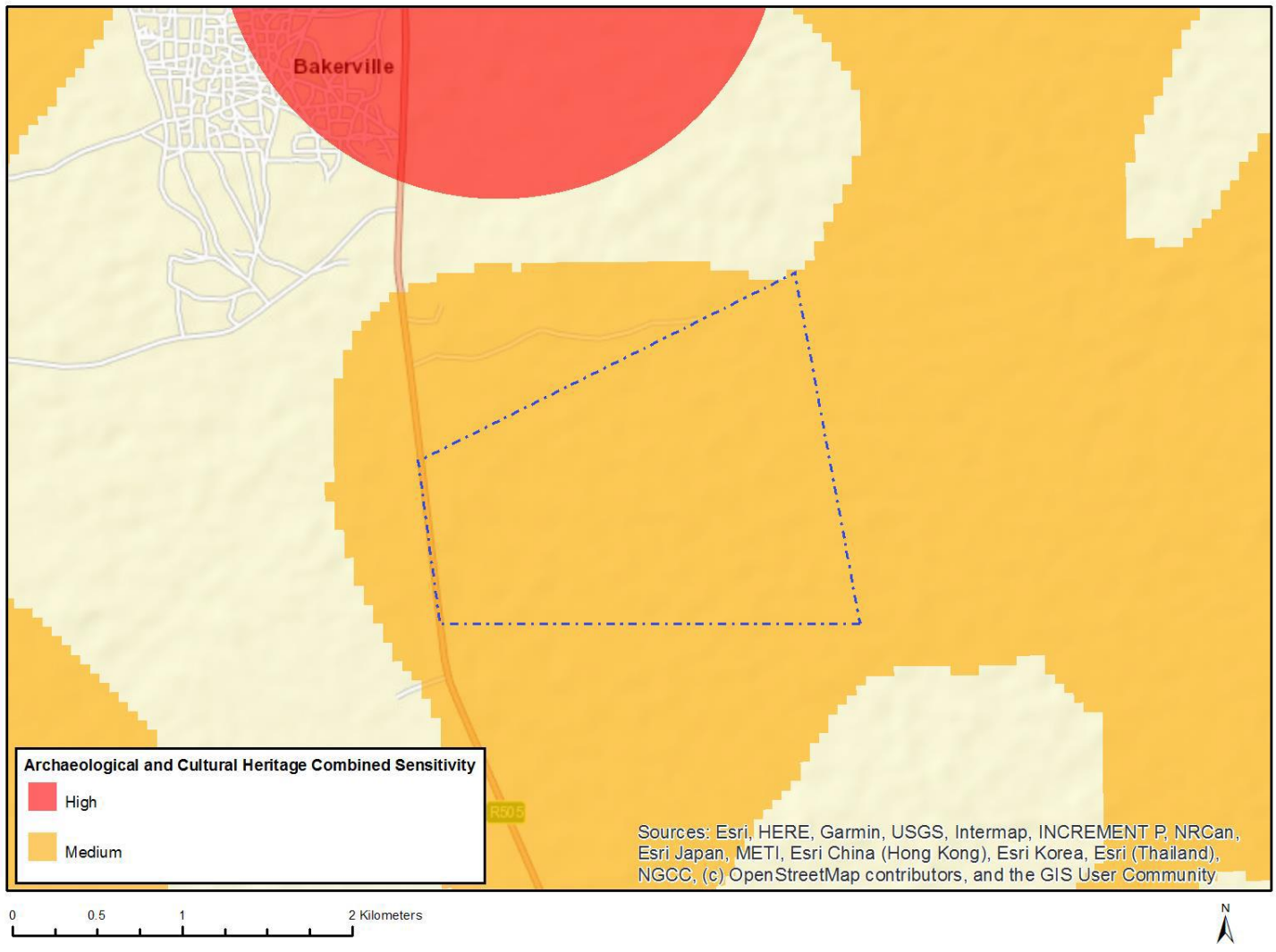


Figure 5: Map of the relative archaeological and cultural heritage theme sensitivity

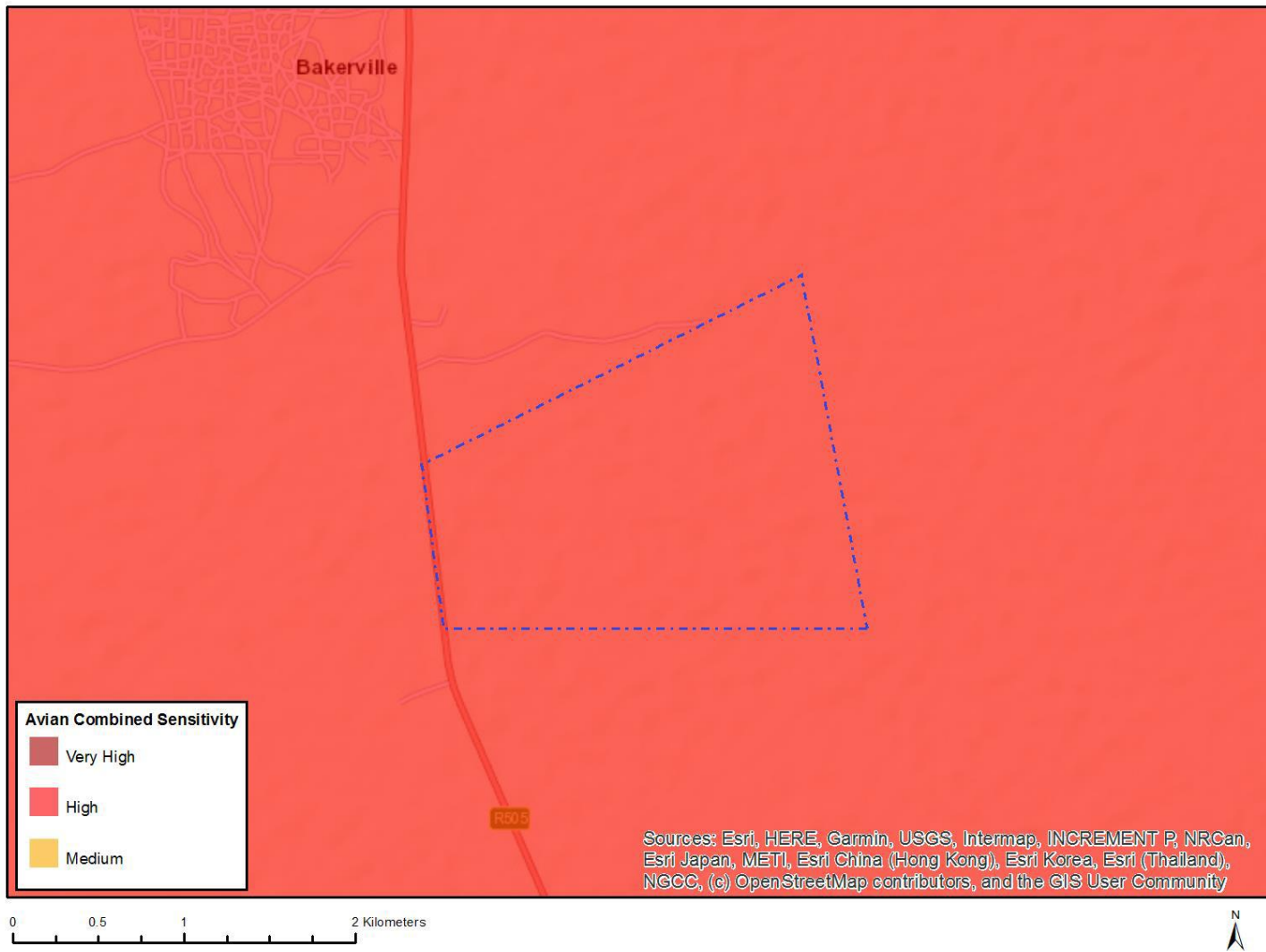


Figure 6: Map of the relative avian theme sensitivity

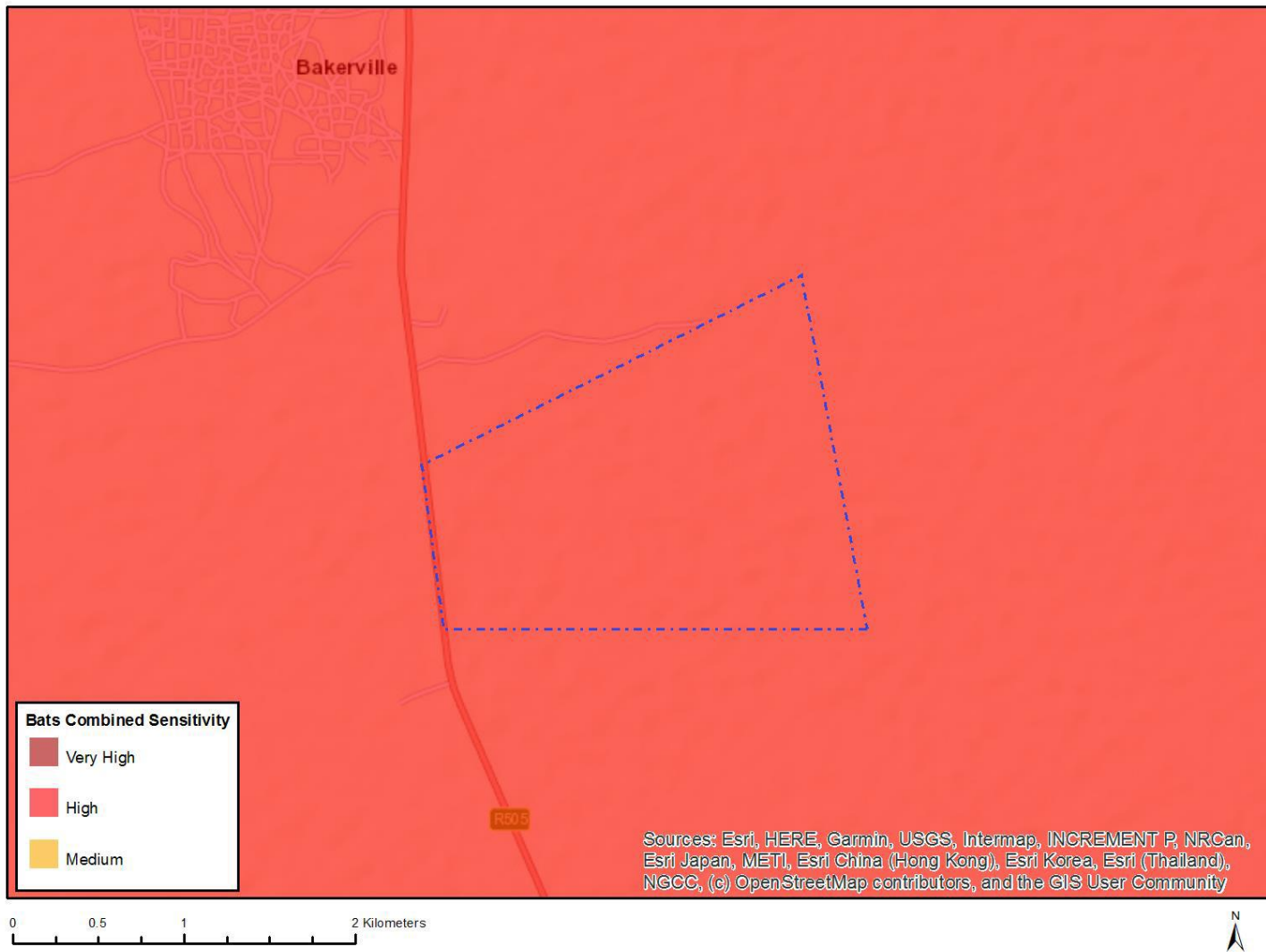


Figure 7: Map of the relative bats theme sensitivity



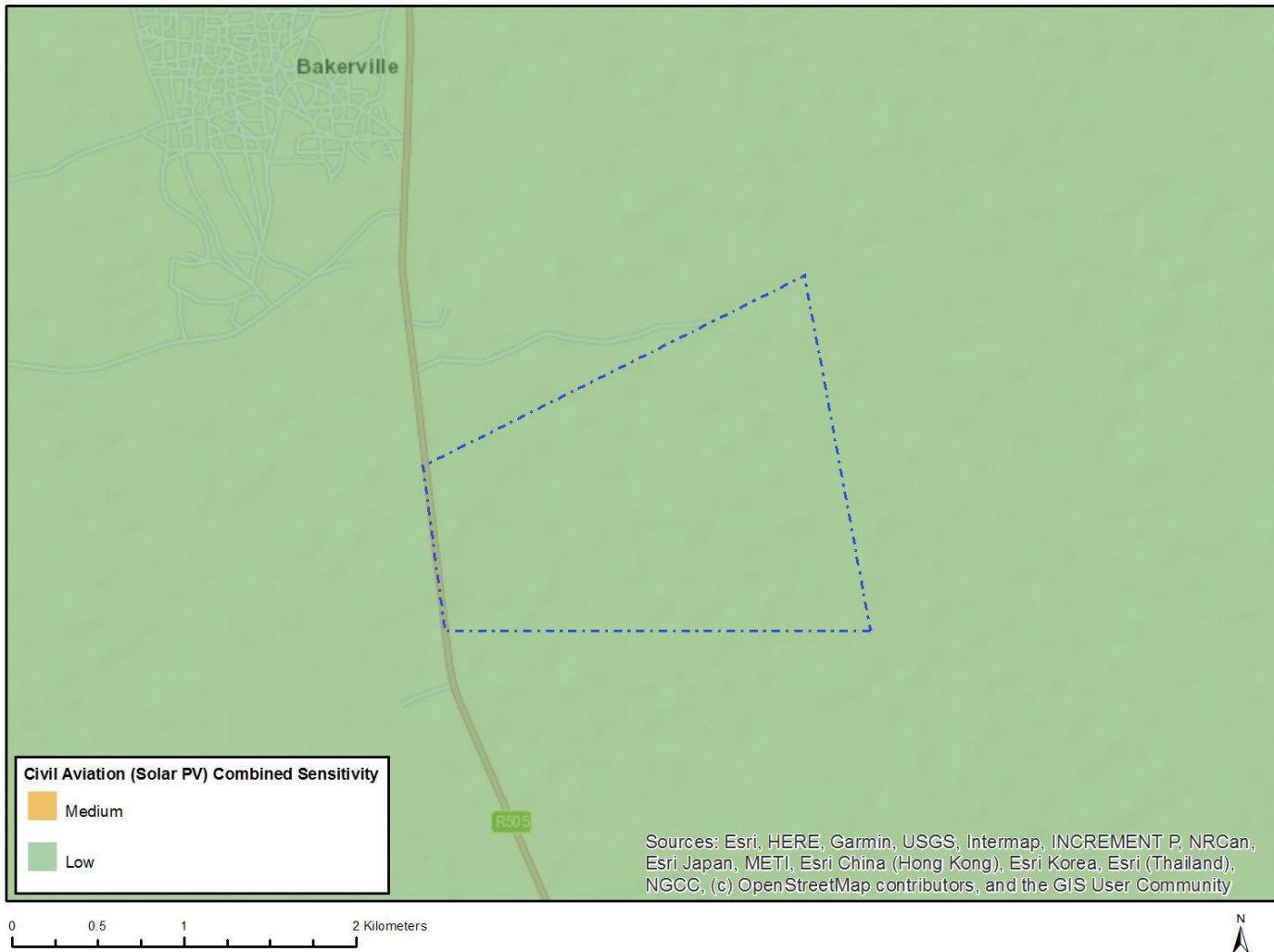


Figure 8: Map of the relative civil aviation (solar PV) theme sensitivity

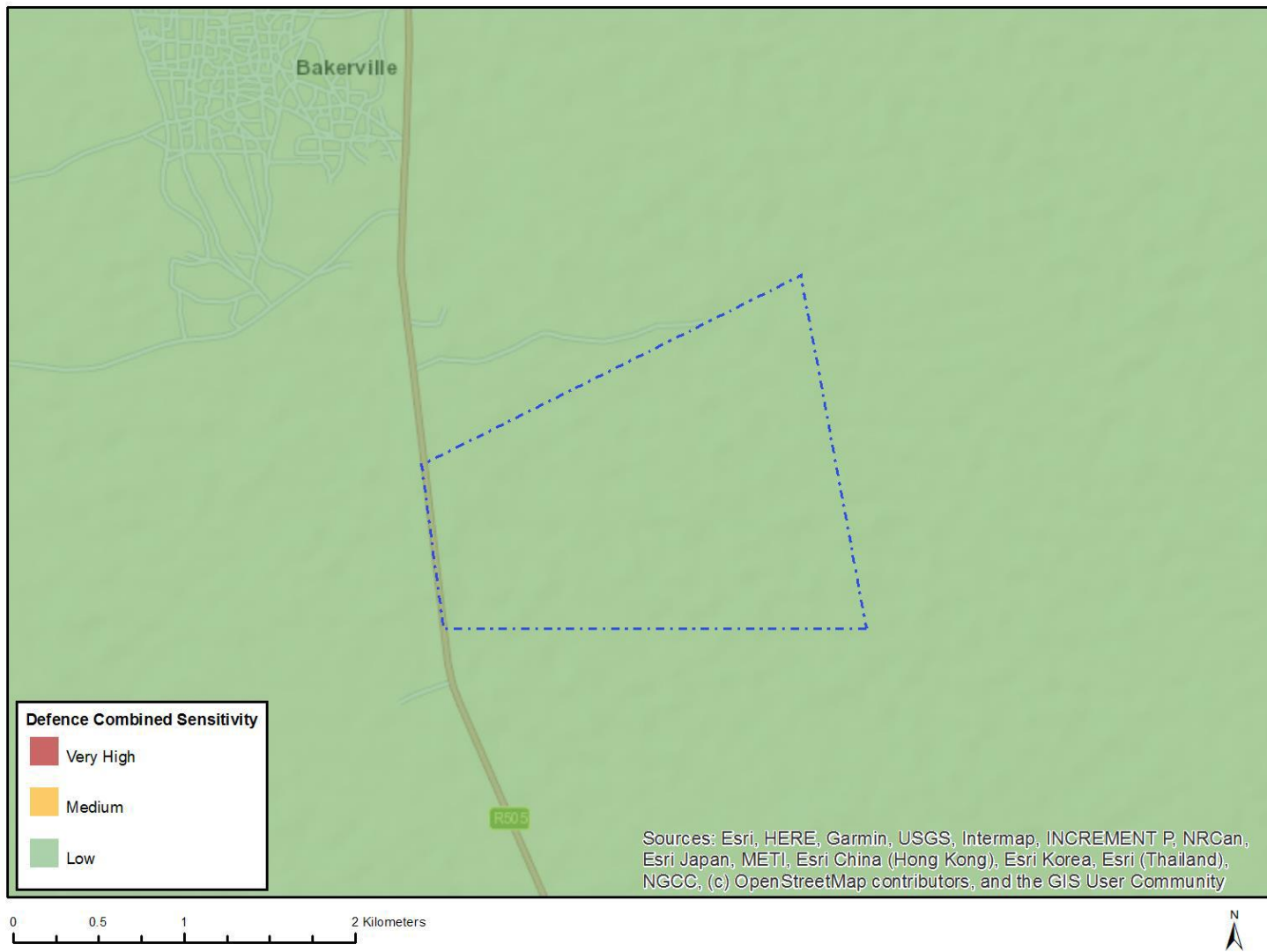


Figure 9: Map of the relative defence theme sensitivity

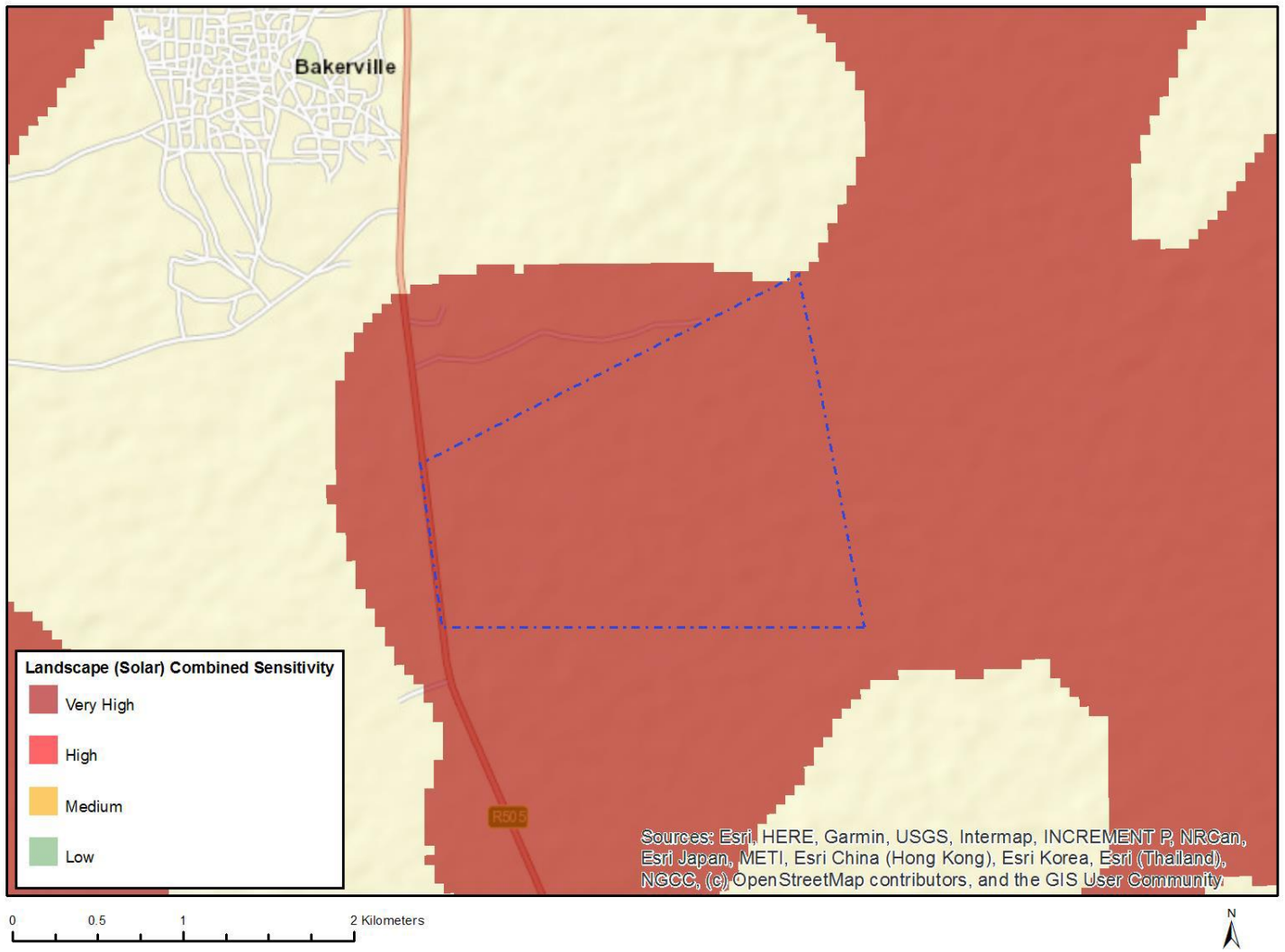


Figure 10: Map of the relative landscape (solar) theme sensitivity

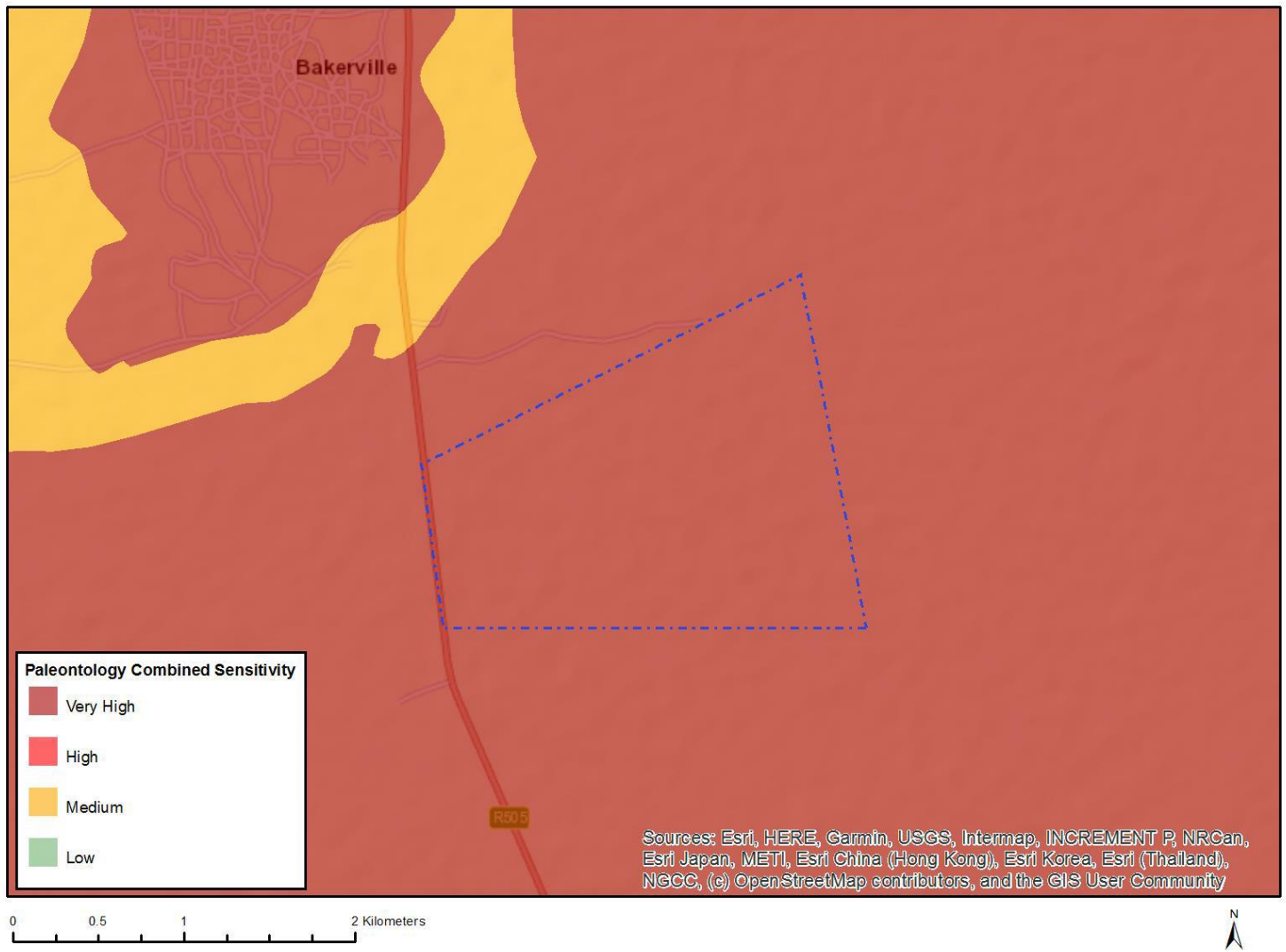


Figure 11: Map of the relative palaeontology theme sensitivity

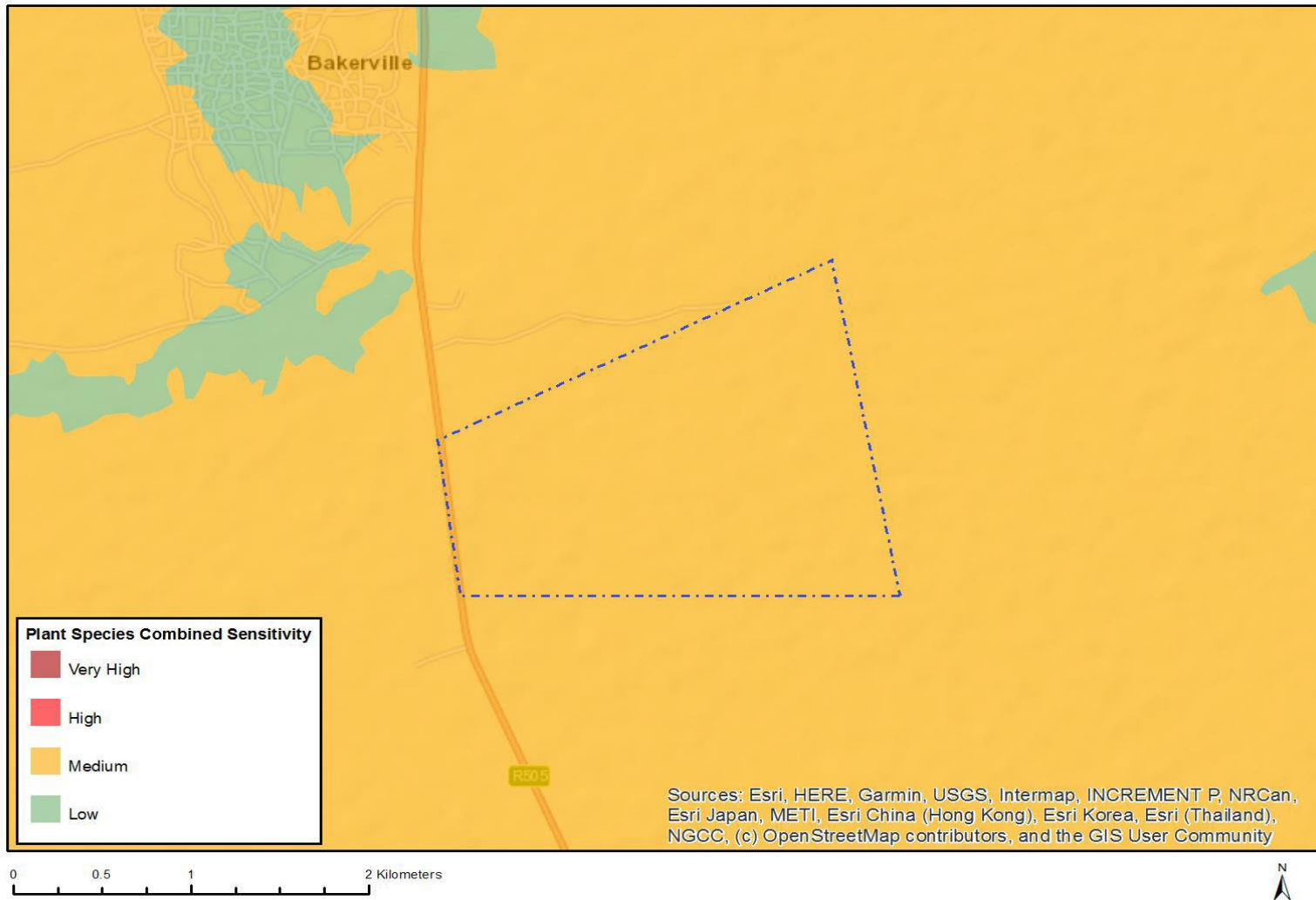


Figure 12: Map of the relative plant species theme sensitivity

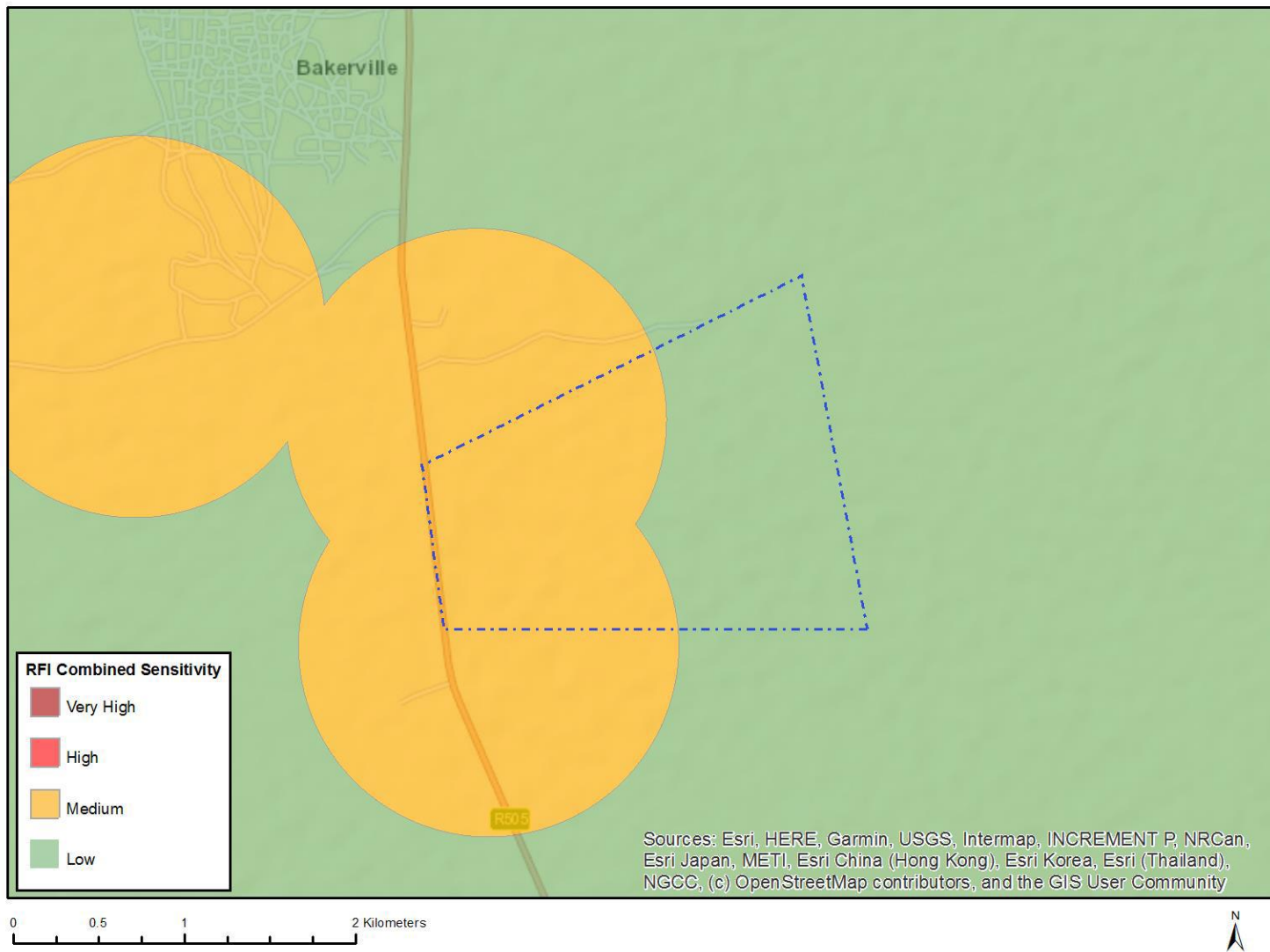


Figure 13: Map of the relative RFI theme sensitivity

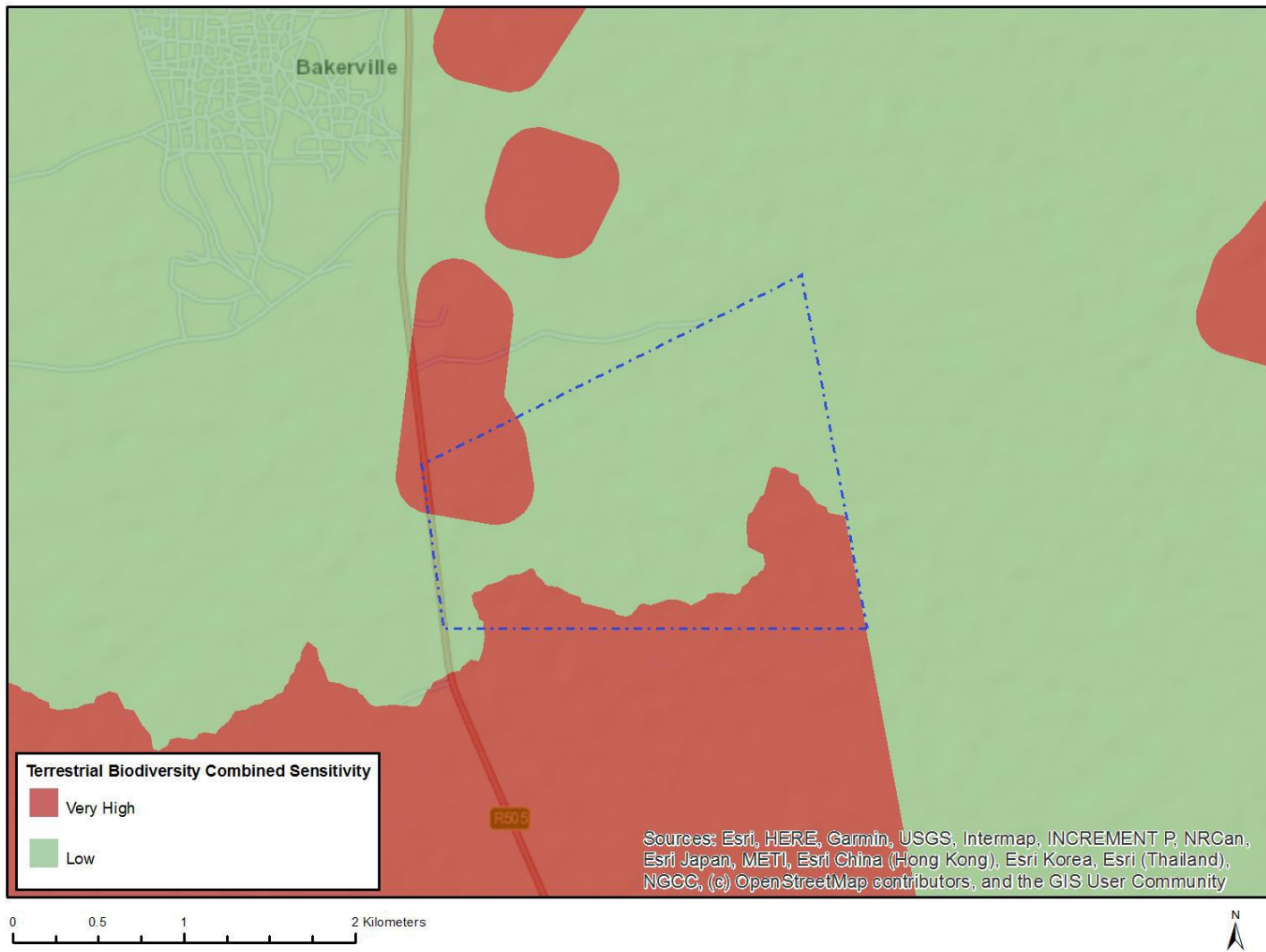


Figure 14: Map of the relative terrestrial biodiversity theme sensitivity

### 7.3 Sub-section 3: Declaration

The proponent/applicant or holder of the EA affirms that he/she will abide and comply with the prescribed impact management outcomes and impact management actions as stipulated in part B: section 1 of the generic EMPr and have the understanding that the impact management outcomes and impact management actions are legally binding. The proponent/applicant or holder of the EA affirms that he/she will provide written notice to the CA 14 days prior to the date on which the activity will commence or commencement of construction to facilitate compliance inspections.

Signature Proponent/applicant/ holder of EA

Date:

-----  
**This declaration will be signed by the proponent/applicant/holder of the EA once the contractor is appointed and has provided inputs to this Generic EMPr as per the requirements of this template.**

### 7.4 Sub-section 4: amendments to site specific information (Part B; section 2)

Should the EA be transferred to a new holder, Part B: Section 2 must be completed by the new holder and submitted with the application for an amendment of the EA in terms of Regulations 29 or 31 of the EIA Regulations, whichever applies. The information submitted for an amendment to an environmental authorisation will be considered to be incomplete should a signed copy of Part B: Section 2 not be submitted. Once approved, Part B: Section 2 forms part of the EMPr for the development and the EMPr becomes legally binding to the new EA holder.



## PART C

### 8 SITE SPECIFIC ENVIRONMENTAL ATTRIBUTES

If any specific environmental sensitivities/attributes are present on the site which require more specific impact management outcomes and impact management actions, not included in the pre-approved generic EMPr template, to manage impacts, those impact management outcomes and actions must be included in this section. These specific management controls must be referenced spatially, and must include impact management outcomes and impact management actions. The management controls including impact management outcomes and impact management actions must be presented in the format of the pre-approved generic EMPr template. This applies only to additional impact management outcomes and impact management actions that are necessary.

If Part C is applicable to the development as authorised in the EA, it is required to be submitted to the CA together with the BAR or EIAR, for consideration of, and decision on, the application for EA. The information in this section must be prepared by an EAP and the name and expertise of the EAP, including the curriculum vitae are to be included. Once approved, Part C forms part of the EMPr for the site and is legally binding.

This section will **not be required** should the site contain no specific environmental sensitivities or attributes.

**Impact management outcome:** Impacts to site specific sensitivities are minimised and avoided

### Impact Management Actions

#### Ecology

- Peripheral impacts around the development footprint, on the surrounding vegetation of the area, should be avoided and a monitoring programme should be implemented to ensure the impacts are kept to a minimum, while the rehabilitation of the site should be prioritised after construction has been completed.
- During construction, sensitive habitats must be avoided by construction vehicles and equipment, wherever possible, to reduce potential impacts. Only necessary damage must be caused and, for example, unnecessary driving around in the veld or bulldozing natural habitat must not take place.
- All development activities should be restricted to specific recommended areas. The Environment Control Officer (ECO) should control these areas. Storage of equipment, fuel and other materials should be limited to demarcated areas. Layouts should be adapted to fit natural patterns rather than imposing rigid geometries. The entire development footprint should be clearly demarcated prior to initial site clearance and prevent construction personnel from leaving the demarcated area. This would only be applicable to the construction phase of the proposed development.
- Where holes for poles pose a risk to animal safety, they should be adequately cordoned off to prevent animals falling in and getting trapped and/or injured. This could be prevented by the constant excavating and backfilling during planting of the poles along the lines.
- Poisons for the control of problem animals should rather be avoided since the wrong use thereof can have disastrous consequences for birds of prey. The use of poisons for the control of rats, mice or other vermin should only be used after approval from an ecologist.
- Limit pesticide use to non-persistent, immobile pesticides and apply in accordance with label and application permit directions and stipulations for terrestrial and aquatic applications.
- Monitoring should be implemented during the construction phase of the development to ensure that minimal impact is caused to the fauna and flora of the area.
- Gravel roads to the construction sites must be well drained to limit soil erosion.
- Control the flow of runoff to move the water safely off the site without destructive gully formation.
- Protect all areas susceptible to erosion and ensure that there is no undue soil erosion resultant from activities within and adjacent to the construction camp and Work Areas.
- A speed limit should be enforced on dirt roads (preferably 30-40km/h).
- An alien/invasive plant management report, plant rescue and protection report, and re-vegetation and habitat rehabilitation report must be developed and implemented for the project. These reports must be available to the Department of Forestry, Fisheries and the Environment, as well as the other applicable authorities as and when required.
-

### **Avifauna**

- Limit the construction footprint and retain indigenous vegetation wherever possible, limit access to the remainder of area, avoid breeding season (summer), lay-down areas must be placed only on disturbed zones, construct in shortest timeframe possible, control noise to minimum.
- Limit access to the remainder of the area, lay-down areas only to be placed in zones that have been disturbed, construct in shortest timeframe possible, use existing roads as far as possible, rehabilitate with indigenous vegetation.
- Require walk-through after power line pole positions are determined to demarcate sections requiring bird deterrents/flappers, install flappers on all required sections of power lines (as directed by avifaunal specialist) on or directly adjacent to site, quarterly fatality monitoring.
- Pole designs to discourage bird perching and to be signed off by avifaunal specialist, quarterly fatality monitoring.

### **Heritage (archaeology and palaeontology)**

- Due to the location of the burial sites in close proximity to the boundary of the proposed power line route, the following mitigation measure is proposed:
  - Avoidance/Preserve: This is viewed to be the primary form of mitigation and applies where any type of development occurs within a formally protected or significant or sensitive heritage context and is likely to have a high negative impact. This measure often includes the change / alteration of development planning and therefore impact zones in order not to impact on resources.
  - If it is decided to retain the burial site, and its exact size has been determined it should be fenced off permanently by means of a wire fence or brick wall, with a buffer zone of at least 20m.
  - Site monitoring during development, by an ECO or the heritage specialist are often added to this recommendation to ensure that no accidental damaged is caused to the features or that undetected heritage/remains are destroyed.
  - In the event of an impact occurring on the identified site or feature, a permit for mitigation and/or destruction must be obtained from SAHRA/PHRA prior to any work being carried out.
- The ECO responsible for the construction phase of the solar facility should be aware of the potential for important fossil finds (e.g. well-preserved stromatolites, karstic-related bone breccias) and the necessity to conserve them for possible professional mitigation.
- The ECO should monitor all substantial surface clearance operations and excavations into sedimentary rocks for fossil remains on an on-going basis during the construction phase.
- Before start of construction phase:
  - Compilation of photographic record of representative stromatolite assemblages within SPP project area by palaeontological specialist (winter season);
  - Specialist palaeontological field study of any substantial karst breccias or bodies of ancient fluvial gravels identified by geophysical surveys or other means.
- Recommended mitigation of chance fossil finds during the construction phase of the solar facility and associated grid connection involves safeguarding of the fossils (preferably in situ) by the responsible ECO and reporting of finds to SAHRA (Contact details: SAHRA, 111 Harrington Street, Cape Town. PO Box 4637, Cape Town 8000, South Africa. Phone: +27 (0)21 462 4502. Fax: +27 (0)21 462 4509. Web: [www.sahra.org.za](http://www.sahra.org.za)). Where appropriate, judicious sampling and recording of fossil material and associated geological data by a qualified palaeontologist, appointed by the developer, may be required by the relevant heritage regulatory authority.
- Once the power line route has been confirmed within the 100m corridor a heritage walk-through needs to be undertaken before construction.
- The ECO should monitor ground clearing activities and excavation activities for fossil remains on a continual basis during construction.

- 38(4)c(i) – If any evidence of archaeological sites or remains (e.g. remnants of stone-made structures, indigenous ceramics, bones, stone artefacts, ostrich eggshell fragments, charcoal and ash concentrations), fossils or other categories of heritage resources are found during the proposed development, SAHRA APM Unit (Elijah D. Katsetse/Phillip Hine 021 462 5402) must be alerted as per section 35(3) of the NHRA. Non-compliance with section of the NHRA is an offense in terms of section 51(1)e of the NHRA and item 5 of the Schedule.
- 38(4)c(ii) – If unmarked human burials are uncovered, the SAHRA Burial Grounds and Graves (BGG) Unit (Thingahangwi Tshivhase/Mimi Seetelo 012 320 8490), must be alerted immediately as per section 36(6) of the NHRA. Non-compliance with section of the NHRA is an offense in terms of section 51(1)e of the NHRA and item 5 of the Schedule.
- 38(4)d – See section 51(1) of the NHRA regarding offences.
- 38(4)e – The following conditions apply with regards to the appointment of specialists:
  - i) If heritage resources are uncovered during the course of the development, a professional archaeologist or palaeontologist, depending on the nature of the finds, must be contracted as soon as possible to inspect the heritage resource. If the newly discovered heritage resources prove to be of archaeological or palaeontological significance, a Phase 2 rescue operation may be required subject to permits issued by SAHRA.

#### **Fossil Chance Find Procedure**

1. Responsible Heritage Resources Agency:

SAHRA, P.O. Box 4637, Cape Town 8000.

Contact: Dr Ragna Redelstorff. Tel: 021 202 8651. Email: rredelstorff@sahra.org.za or Ms Natasha Higgitt. Tel: 021 462 4502. Email: nhiggitt@sahra.org.za

2. Rock Units

Precambrian Malmani Subgroup carbonates, possible Cretaceous / Neogene silcretes, Late Caenozoic karstic solution hollow infills, Pleistocene to Holocene sands, downwasted residual surface gravels.

3. Potential Fossils

Stromatolites (domes, columns etc, often secondarily silicified) within Precambrian bedrocks. Possible Plio-Pleistocene of older bone breccias within karstic solution hollows (macro- and micro-mammalian remains), petrified wood within silcretes or ancient fluvial gravels. Vertebrate bones & teeth, vertebrate and other burrows (e.g. calcretified termitaria) within superficial sediments.

4. ECO Protocol

a) Once alerted to fossil occurrence(s): alert site foreman, stop work in area immediately (N.B. safety first!), safeguard site with security tape / fence / sand bags if necessary.

b) Record key data while fossil remains are still in situ:

- Accurate geographic location—describe and mark on site map / 1: 50 000 map / satellite image / aerial photo
- Context—describe position of fossils within stratigraphy (rock layering), depth below surface
- Photograph fossil(s) in situ with scale, from different angles, including images showing context (e.g. rock layering)

c) If feasible to leave fossils in situ:

- Alert Heritage Resources Agency and project palaeontologist (if any) who will advise on any necessary mitigation
- Ensure fossil site remains safeguarded until clearance is given by the Heritage Resources Agency for work to resume

If not feasible to leave fossils in situ (emergency procedure only):

- Carefully remove fossils, as far as possible still enclosed within the original sedimentary matrix (e.g. entire block of fossiliferous rock)
- Photograph fossils against a plain, level background, with scale
- Carefully wrap fossils in several layers of newspaper / tissue paper / plastic bags
- Safeguard fossils together with locality and collection data (including collector and date) in a box in a safe place for examination by a palaeontologist
- Alert Heritage Resources Agency and project palaeontologist (if any) who will advise on any necessary mitigation

d) If required by Heritage Resources Agency, ensure that a suitably-qualified specialist palaeontologist is appointed as soon as possible by the developer.

e) Implement any further mitigation measures proposed by the palaeontologist and Heritage Resources Agency

##### 5. Specialist palaeontologist

Record, describe and judiciously sample fossil remains together with relevant contextual data (stratigraphy / sedimentology / taphonomy). Ensure that fossils are curated in an approved repository (e.g. museum / university / Council for Geoscience collection) together with full collection data. Submit Palaeontological Mitigation report to Heritage Resources Agency. Adhere to best international practice for palaeontological fieldwork and Heritage Resources Agency minimum standards.

## APPENDIX 1: METHOD STATEMENTS

To be prepared by the contractor prior to commencement of the activity. The method statements are **not required** to be submitted to the CA.