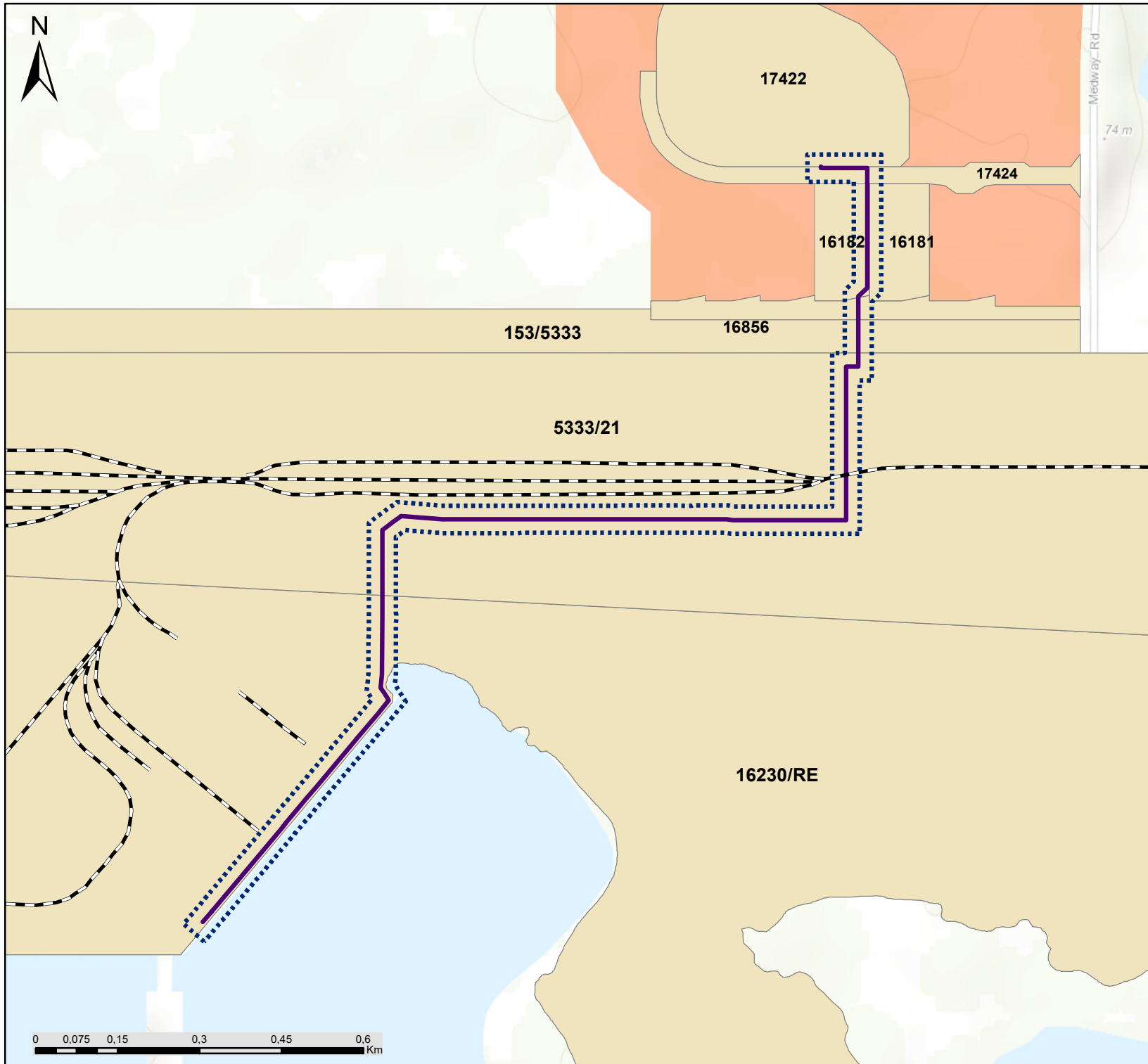


APPENDIX J:
A3 MAPS



Wilmar Oil Pipeline, KwaZulu-Natal

Project Development Corridor Map

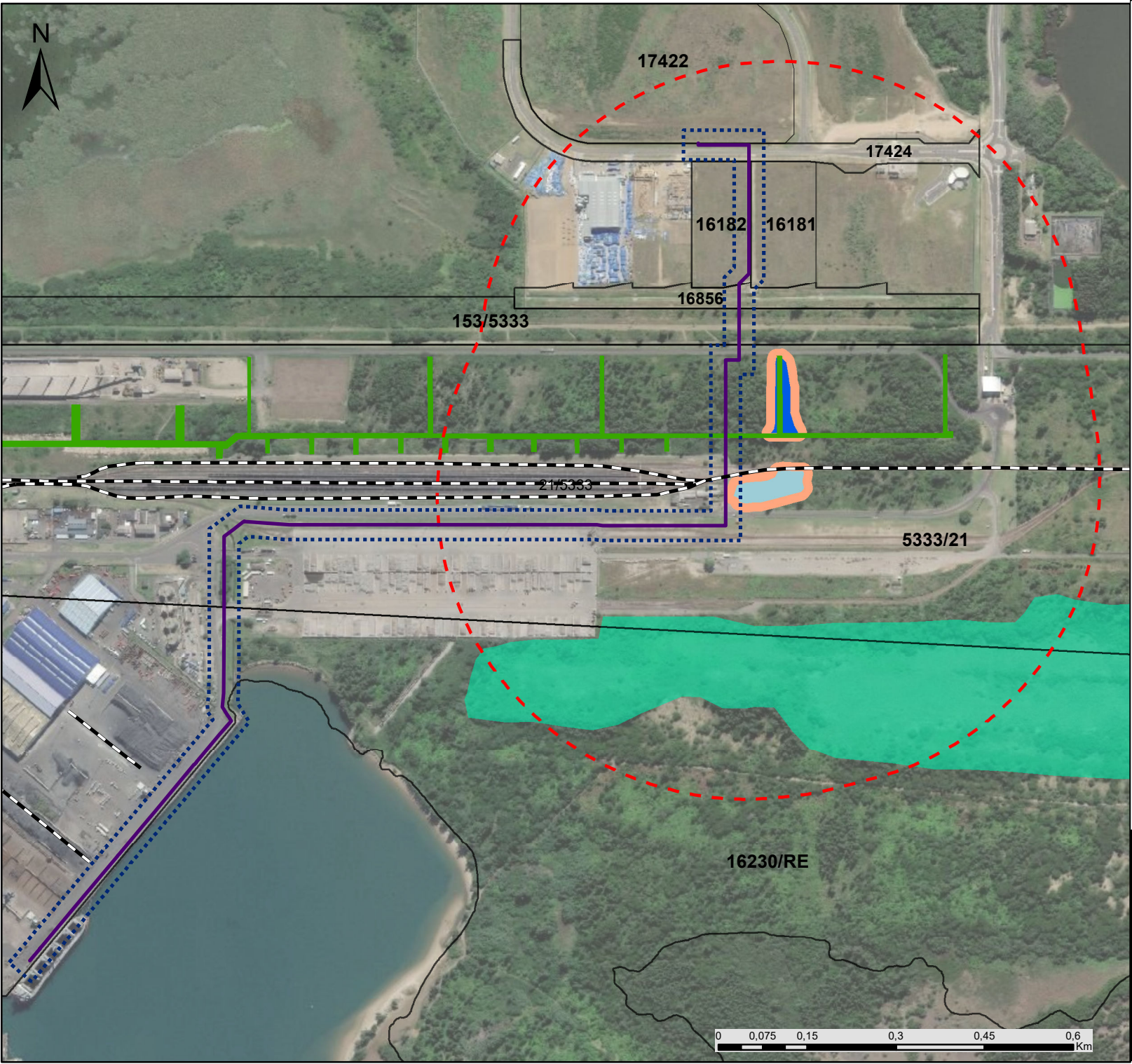
Legend

- Railway Line
- Existing Power Line
- Pipeline Route
- Pipeline Corridor
- Affected Farm Portions
- Richards Bay IDZ Phase 1A

savannah
environmental

Scale: 1:9 724
Projection: LO31
Ref: Wilmar Project Development Corridor Map_30.04.19





Wilmar Oil Pipeline, KwaZulu-Natal

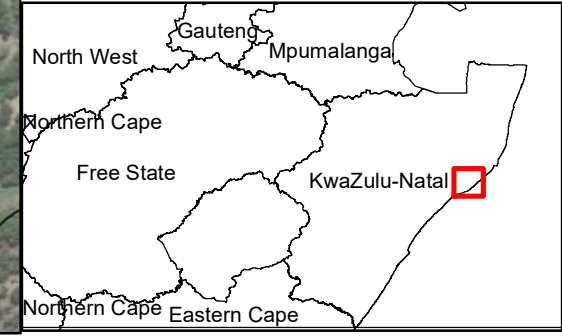
Wetland Delineation Map

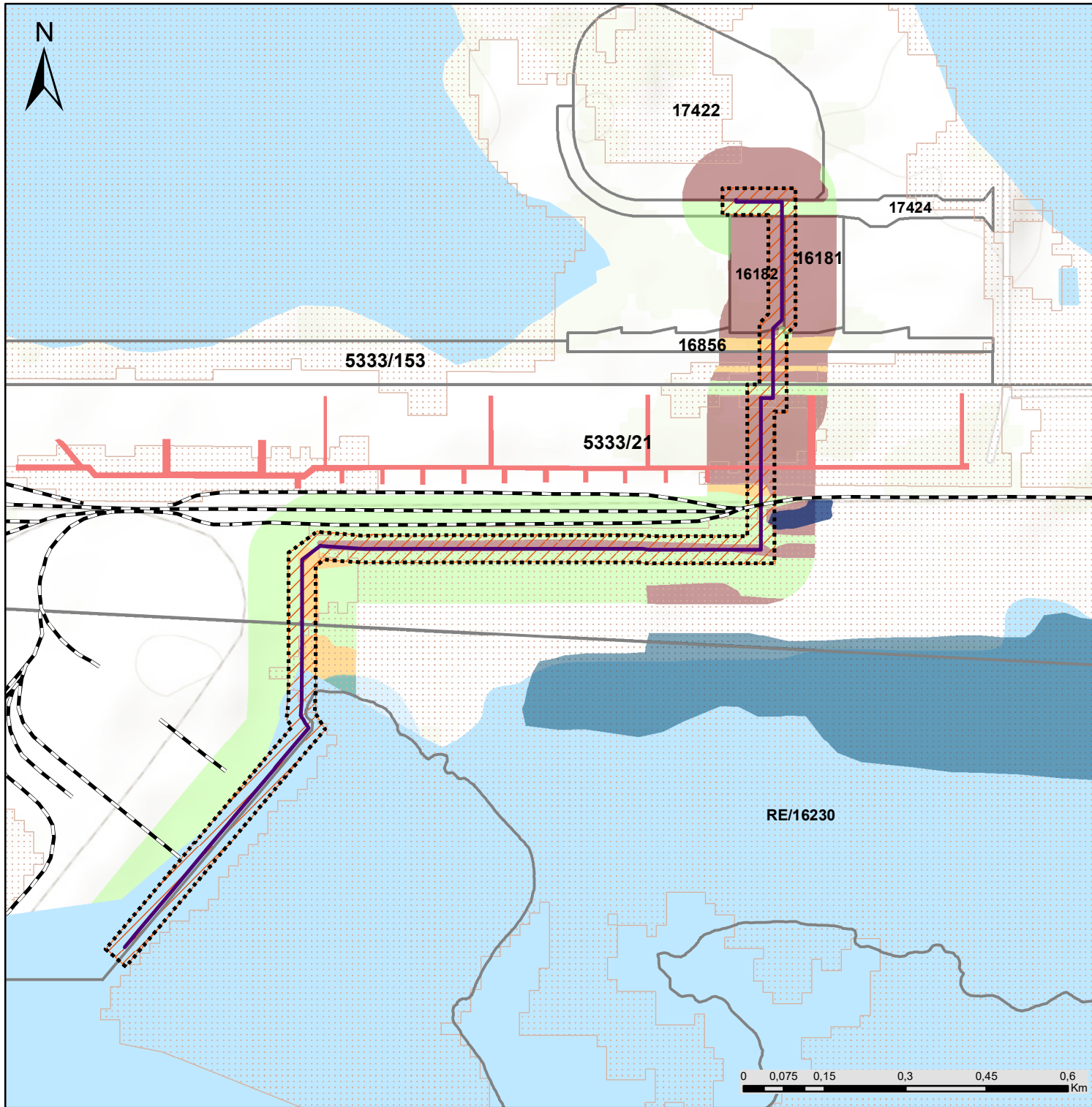
Legend

- Pipeline Route
 - Pipeline Corridor
 - Railway Line
 - Affected Farm Portions
- ### Wetland Delineation
- 500m Regulated Area (GN.R 509)
 - Depression Wetland
 - 15m Depression Wetland Buffer
 - Artificial Drainage Canal
 - Channelled Valley Bottom Wetland
 - 15m Channelled Valley Bottom Wetland Buffer
 - Unchannelled Valley Bottom Wetland



Scale: 1:8 958
 Projection: LO31
 Ref: Wilmar Wetland Delineation Map_28.03.19





Wilmar Oil Pipeline KwaZulu-Natal

Environmental Sensitivity Map

Legend

- Railway Line
- Pipeline Route
- Pipeline Corridor
- Affected Farm Portions

Environmental Sensitivities

- Unchannelled Valley Bottom Wetland-Very High Freshwater Sensitivity
- Depression Wetland-Moderate Freshwater Sensitivity
- Artificial Drainage Channel-Moderate Freshwater Sensitivity
- Critical Biodiversity Areas (Irreplaceable)
- Low Ecological Sensitivity
- NFEPA Wetlands

Soil Sensitivity

- High
- Medium
- Low (Wilderness - Class VIII)
- Surface Water

savannah
environmental

Scale: 1:10 221
Projection: LO31
Ref: Wilmar Sensitivity Map_30.04.19

