



**Proposed continuous disposal of ash
at the TUTUKA power station**

SPECIALIST AVIFAUNAL IMPACT ASSESMENT

*SCOPING REPORT
October 2012*

Andrew Pearson
Endangered Wildlife Trust
011 486 1102
andrewp@ewt.org.za

EXECUTIVE SUMMARY

Eskom Holdings SOC (Ltd) is proposing to continue disposing of ash at the Tutuka Power Station ash disposal facilities. Lidwala Consulting Engineers were appointed by Eskom Holdings SOC Ltd to undertake an Environmental Impact Assessment and Waste Management Licencing for the proposed project and the Endangered Wildlife Trust (EWT) was subsequently appointed as an avifaunal specialist.

In general, the study area has moderate to high sensitivity in terms of Avifauna. Of the 16 red listed species identified in the SABAP 1 data, only 9 species have again been recorded in the SABAP 2 data for the pentads examined, as well as one additional red listed species, the African Openbill. To date, the most important species identified that may be impacted upon are Blue Korhaan, Blue Crane, Southern Bald Ibis, Greater Flamingo, Lesser Flamingo, Secretary Bird, White Stork, Pallid Harrier, Lesser Kestrel, Caspian Tern and Botha's Lark. The greatest impact of the proposed project is likely to be that of habitat destruction, while leachate from fly ash, into water systems used by avifauna is also of concern. Possible impacts of associated infrastructure (e.g. roads, power lines, conveyors, pollution control dams, pipelines and pump stations) will be assessed upon completion of the scoping phase; however collisions are expected to be the largest impact of associated power lines. In terms of the possible collision impact with associated power lines should these be required, the greatest concern is the presence of a number of Greater and Lesser Flamingos in the area. Sensitive areas have been mapped, within which the above mentioned collision mitigation must be implemented.

It was concluded that the project has no fatal flaws in terms of avifauna at this stage, and the EIA phase may commence. Recommendations and actions for the EIA study include a detailed site visit, updating of SABAP2 data, a rating of impacts, and the sensitivity map will be "fine tuned" and revised if necessary.

DECLARATION OF INDEPENDANCE

Specialist Investigator

Andrew Pearson is employed by the Endangered Wildlife Trust's Wildlife and Energy Programme as a specialist investigator for conducting avifaunal specific specialist reports. Andrew has a Four Year BSc in Conservation Ecology, certificates in Environmental Law, as well as five years experience in the environmental management field. The findings, results, observations, conclusions and recommendations given in this report are based on the author's best scientific and professional knowledge as well as available information.

Declaration of Independence

All specialist investigators specified above declare that:

- We act as independent specialists for this project.
- We consider ourselves bound by the rules and ethics of the South African Council for Natural Scientific Professions.
- We do not have any personal or financial interest in the project except for financial compensation for specialist investigations completed in a professional capacity as specified by the Environmental Impact Assessment Regulations, 2010.
- We will not be affected by the outcome of the environmental process, of which this report forms part of.
- We do not have any influence over the decisions made by the governing authorities.
- We do not object to or endorse the proposed developments, but aim to present facts and our best scientific and professional opinion with regard to the impacts of the development.
- We undertake to disclose to the relevant authorities any information that has or may have the potential to influence its decision or the objectivity of any report, plan, or document required in terms of the Environmental Impact Assessment Regulations, 2010.
- Should we consider ourselves to be in conflict with any of the above declarations, we shall formally submit a Notice of Withdrawal to all relevant parties and formally register as an Interested and Affected Party.

Terms and Liabilities

- This report is based on a short term investigation using the available information and data related to the site to be affected. No long term investigation or monitoring was conducted.
- The Precautionary Principle has been applied throughout this investigation.
- The specialist investigator, and the Endangered Wildlife Trust, for whom he/she works, does not accept any responsibility for the conclusions, suggestions, limitations and recommendations made in good faith, based on the information presented to them, obtained from these assessments or requests made to them for the purposes of this assessment.
- Additional information may become known or available during a later stage of the process for which no allowance could have been made at the time of this report.
- The specialist investigator withholds the right to amend this report, recommendations and conclusions at any stage should additional information become available.
- Information, recommendations and conclusions in this report cannot be applied to any other area without proper investigation.
- This report and all of the information contained herein remain the intellectual property of the Endangered Wildlife Trust.
- This report, in its entirety or any portion thereof, may not be altered in any manner or form or for any purpose without the specific and written consent of the specialist investigator as specified above.
- Acceptance of this report, in any physical or digital form, serves to confirm acknowledgment of these terms and liabilities.

Signed on the 5th October 2012 by Andrew Pearson in his capacity as specialist investigator for the Endangered Wildlife Trust's Wildlife and Energy Programme.



INTRODUCTION

Background

Eskom Holdings SOC (Ltd) is proposing to continue disposing of ash at the Tutuka Power Station ash disposal facilities. Lidwala Consulting Engineers were appointed to undertake an Environmental Impact Assessment for the proposed project and the Endangered Wildlife Trust (EWT) was subsequently appointed as an avifaunal specialist. For this scoping phase a short, high level site visit to the general study area was conducted on the 25th July 2012. This avifaunal study used a set methodology as well as various data sets. The focal species for the study were determined, and then, by looking at the focal species which could occur in the area, as well as assessing the availability of bird micro habitats, the possible impacts of the development were then assessed. In general terms, the impacts that could be associated with a project of this nature include habitat destruction, disturbance of sensitive bird species, and the contamination of water sources used by birds. Associated infrastructure such as powerlines may also pose collision and electrocution risks to avifauna.

Terms of reference

No specific terms were provided, and therefore the following standard EWT terms of reference were utilized for this study:

- Describe the current state of avifauna in the study area, outlining important characteristics which may be influenced by the proposed infrastructure or which may influence the proposed infrastructure during construction and operation.
- Identify Red Data species potentially affected by the continuous disposal of ash, as well as any associated infrastructure. Identify potential impacts (positive and negative, including cumulative impacts if relevant) of the proposed development on avifauna during construction and operation.
- Identify mitigation measures for enhancing benefits and avoiding or mitigating negative impacts and risks.
- Identify and address any other aspects related to avifauna in the study area that should be incorporated into the reports.

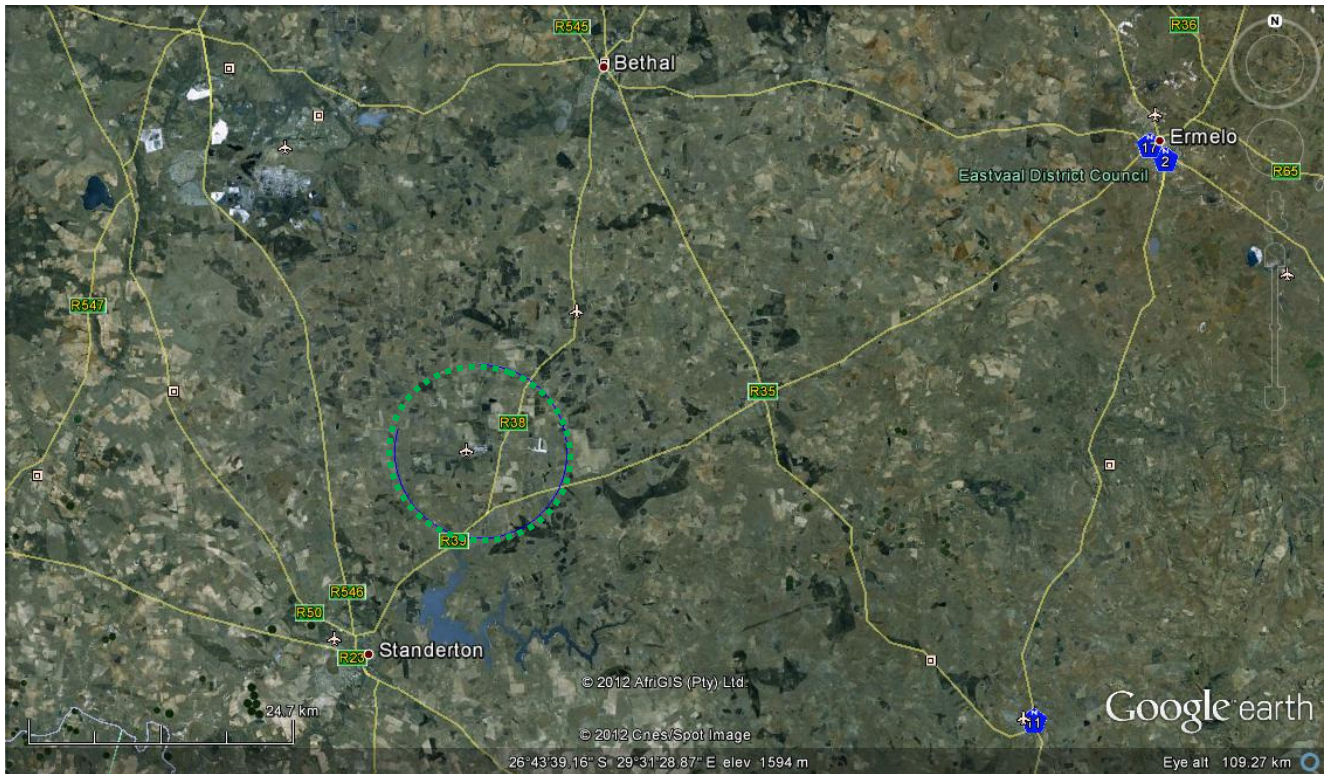


Figure 1: Google Earth image showing the broader study area (circled in green), which is an 8km radius from Tutuka Power Station, within which the scoping site visit took place. Major roads and nearby towns are also shown.

METHODS

Methodology

The methodology used to predict impacts in the current study was as follows:

- The various data sets discussed below under “sources of information” were collected and examined.
- The data was examined to determine the location and abundance of power line sensitive Red Data species as well as non-Red Data power line sensitive species in the study area.
- The general study area was visited to obtain a first-hand perspective of the proposed route and birdlife, and to determine which bird micro-habitats are present and relevant to the study. This involved driving the study area, taking photographs, and walking certain accessible areas. The properties, on which the proposed ash disposal facility is to be continued, were not accessible at this stage.

- 3 Observation Points (OP) were randomly chosen, all in the near vicinity of the proposed project. A 30 minute point count was conducted at each OP, recording all species seen or heard, as well as the numbers thereof.
- A desk top examination, using Google Earth imagery was done to assist in the identification of possible sensitive areas.
- The impacts of the proposed development on birds were predicted.
- Recommended mitigation measures for significant impacts were proposed.

Sources of information

The study made use of the following data sources:

- Bird distribution data of the Southern African Bird Atlas Project (SABAP – Harrison, Allan, Underhill, Herremans, Tree, Parker & Brown, 1997) obtained from the Avian Demography Unit of the University of Cape Town, in order to ascertain which species occur in the study area.
- The conservation status of all bird species occurring in the aforementioned degree squares was then determined with the use of The Eskom Red Data book of birds of South Africa, Lesotho and Swaziland (Barnes, 2000).
- The Southern African Bird Atlas Project 2 data for certain pentads in the study area was examined.
- Data from the Co-ordinated Waterbird Count (CWAC) project was also consulted to determine whether any CWAC sites exist in the study area (Taylor, Navarro, Wren- Sargent, Harrison & Kieswetter, 1999). Updated CWAC data were obtained from the Animal Demography Unit, University of Cape Town.
- The Important Bird Areas of southern Africa (IBA) project data (Barnes 1998) was consulted to determine its relevance to this project.
- A classification of the vegetation types in the study area was obtained from Mucina and Rutherford (2006).
- Land Cover 2009 (CSIR) data was mapped, in order to assist in identifying the dominant forms of land use in the area.
- Information on the micro-habitat level was obtained through visiting the area and obtaining a firsthand perspective.
- Electronic 1:50 000 maps were obtained from the Surveyor General.
- Satellite Imagery of the area was studied using Google Earth ©2012.

Limitations & assumptions

This study made the assumption that the above sources of information are reliable. The following factors may potentially detract from the accuracy of the predicted results:

- The SABAP-1 data covers the period 1986-1997. Bird distribution patterns fluctuate continuously according to availability of food and nesting substrate. (For a full discussion of potential inaccuracies in ASAB data, see Harrison, Allan, Underhill, Herremans, Tree, Parker & Brown, 1997).
- The site visit was conducted in late winter, over which time various species may not have been present in the study area
- During the site visit, it was not yet possible to access the actual proposed Ash disposal facility continuation site.
- Google Earth Imagery may not always reflect the true situation on the ground, as some images may be outdated.
- Bird behaviour can not be reduced to formulas that will hold true under all circumstances. However, power line impacts can be predicted with a fair amount of certainty, based on experience gained by the EWT through the investigation of hundreds of localities in southern Africa where birds have interacted with Eskom infrastructure since 1996.

DESCRIPTION OF AFFECTED ENVIRONMENT

Study area vegetation and Land use

While this report is an avifaunal specialist report, vegetation and micro habitats are very important in determining avifaunal abundances and likelihood of occurrences. As such, vegetation types classified by Mucina & Rutherford (2006) were examined within an 8 km radius of Tutuka Power Station. It was found that the only vegetation type present within 8 km of the power station is that of "Soweto Highveld Grassland". Land use data (CSIR2009) was also considered for the study area, and it was found that the major land uses in the study area are "cultivated: temporary - commercial dryland" and "unimproved grassland". The land use (Figure 2) and microhabitats were considered to determine what species may occur and where they are likely to occur.

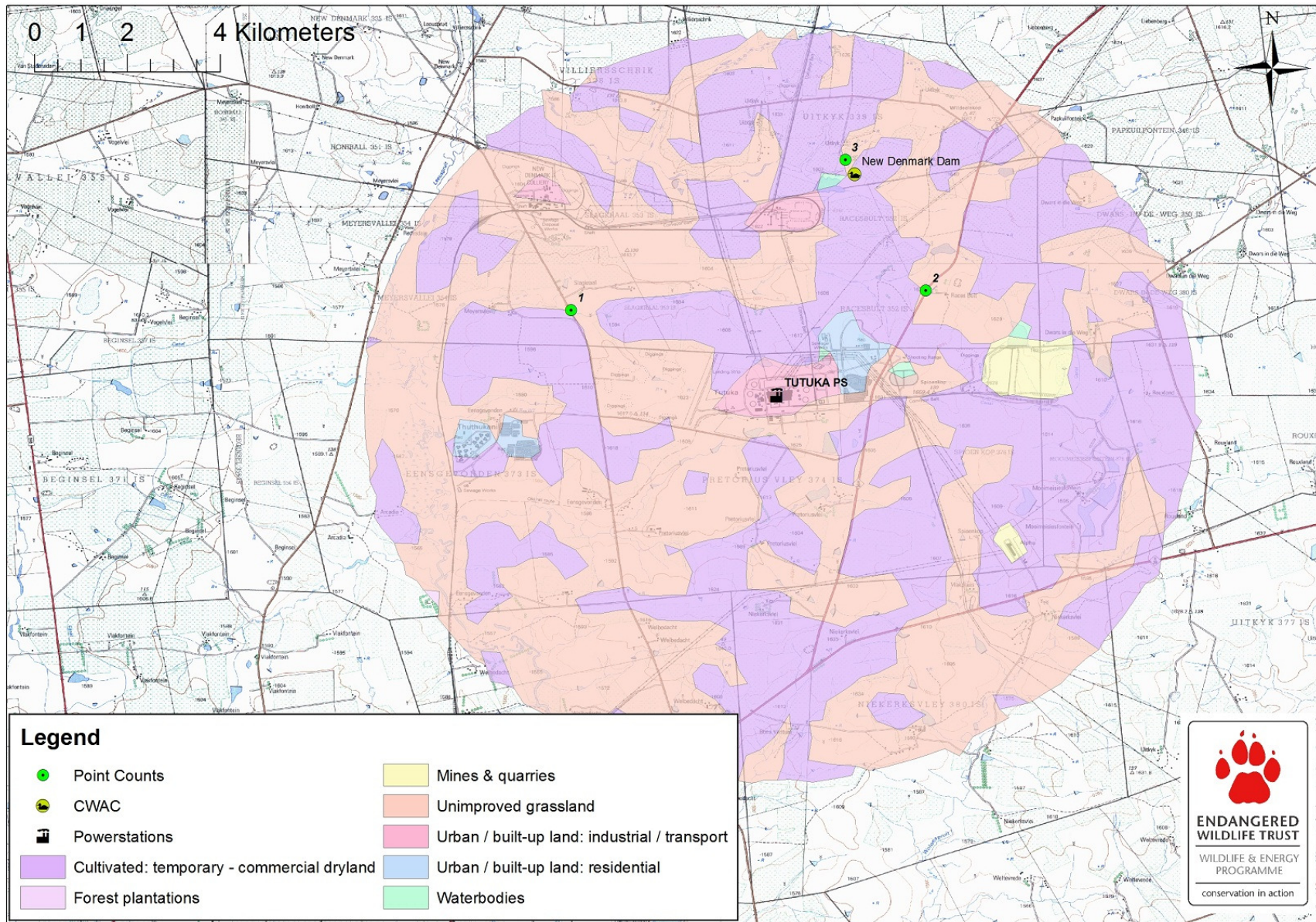


Figure 2: Land Cover (CSIR2009) in the study area. The positions of the Observation points where point counts were conducted during the site visit, as well as the location of the CWAC site is also shown.

Bird micro habitats

In addition to the description of vegetation, it is important to understand the habitats available to birds at a smaller spatial scale, i.e. micro habitats. Micro habitats are shaped by factors other than vegetation, such as topography, land use, food sources and man-made factors. Investigation of this study area revealed the following bird micro habitats.

Arable and/or cultivated lands

Arable or cultivated lands can represent significant feeding areas for many bird species in any landscape for the following reasons: through opening up the soil surface (Figure 3), land preparation makes many insects, seeds, bulbs and other food sources readily accessible to birds and other predators; the crop or pasture plants cultivated are often eaten themselves by birds, or attract insects which are in turn eaten by birds; during the dry season arable lands often represent the only green or attractive food sources in an otherwise dry landscape. Relevant bird species that may be attracted to these areas include most importantly the Blue Crane, Southern Bald Ibis, Blue Korhaan and White Stork. Marsh owls will also regularly forage over agricultural lands (Figure 4), especially in the late afternoon.



Figure 3: Agricultural lands observed in the study area.



Figure 4: One of four Marsh Owls observed in close vicinity to each other, foraging over agricultural lands in the study area.

Open Grasslands

The only vegetation type (Mucina & Rutherford, 2006) present is “Soweto Highveld Grassland”, which falls within the greater Grasslands Biome. It was not surprising, therefore, that the most extensive bird microhabitat available on this site is that of grasslands (see Figure 5). Grassland may attract the Blue Crane, Black-winged Pratincole, Southern Bald Ibis, Blue Korhaan, Secretarybird, and White Stork. Pristine patches of grassland, near to water, may provide breeding habitat for the African Grass Owl, although this species has not been recorded in the SABAP data for the study area. The grassland patches are also a favourite foraging area for game birds such as francolins and Helmeted Guineafowl, as well as being hunting habitat for raptors such as African Marsh Harrier, Lanner Falcon, Rock Kestrel (figure 7), Lesser Kestrel, Amur Falcon and Black-shouldered kite. Important to this study is that Botha’s Lark (Endangered) has been recorded in the quarter degree squares (SABAP1 data) examined, and is a relatively rare grassland species (figure 12).



Figure 5: Grassland observed in the broader study area.



Figure 6: Burnt grasslands observed in the study area.



Figure 7: A Rock Kestrel perches, while foraging over grassland in the study area.

Dams

Various waterfowl, waders and numerous duck species, may frequent the man-made dams within the study area. More importantly, Blue Cranes use dams to roost in communally, and Flamingos may use these areas as stop over points while moving between larger water bodies. Various Storks may also frequent these water bodies. One particular Dam (New Denmark Dam) is a Co-ordinated Waterbird Count (CWAC) site, and both Lesser and Greater Flamingos were observed here during the site visit.



Figure 8: A typical man-made farm dam, as observed in the study area.

Wetlands and Rivers or drainage lines

In this area species such as Greater Flamingo, Lesser Flamingo, Yellow-billed Stork and Caspian Tern are attracted to water, and therefore may find flowing rivers or streams attractive. Non Red Data species may also occur in these areas for example herons. Rivers in their true form represent important habitat for many species, including Black Stork and a variety of other water birds, while the wooded riparian habitat along a river may provide habitat for various species such as the Hamerkop, African Darter, various cormorants, kingfishers, bee-eaters, robin-chats and numerous smaller species.

According to GIS mapping using data from Mucina & Rutherford (2006), the only river in the study area is the Leeuspruit. 1 in 50 000 maps from the Surveyor General show the presence of the smaller Wolwespruit (which may not always flow) to the east of the existing ash disposal site. Numerous smaller drainage lines, some of which do not always carry water are also present in the broader area. Drainage lines, as well as all of the Rivers/"Spruite" discussed above, may serve as flight paths for several bird species.



Figure 9: This drainage line in the study area contained water, which appeared to be dammed by a tar road.

Stands of Alien vegetation:

Patches of alien trees were observed throughout the study area, often associated with a farm stead, or along farm roads. These areas will mostly be important to physically smaller bird species. These also provide perching, roosting and nesting habitats for various raptor species and larger birds such as francolins, Guineafowl, Herons and Hadedda Ibises.



Figure 10: A stand of alien trees in the study area.

Relevant bird populations

The relevant bird populations that have been reported by the South African Bird Atlas Projects (1 and 2) can be found below in Tables 1 & 2. It is important to note that these species could have been recorded anywhere in the associated pentad or quarter degree square (QDGS), and not necessarily in the exact study area.

Table 1: Red Listed species recorded in the quarter degree squares (SABAP1) covering the study area (Harrison *et al* 1997)

Species	Cons. status	Report rate (%)	
		2629CD	2629CB
<i>QDGS</i>			
<i>Number of cards submitted</i>		69	55
<i>Total Species</i>		175	175
Botha's Lark	EN	-	2
African Marsh Harrier	VU	-	2
Lesser Kestrel	VU	22	16
Blue Crane	VU	12	7
Southern Bald Ibis	VU	4	-
White-bellied Korhaan	VU	-	4
Yellow-billed Stork	NT	1	-
Secretary Bird	NT	10	9
Greater Flamingo	NT	1	2
Lesser Flamingo	NT	1	-
Black-winged Pratincole	NT	-	4
Pallid Harrier	NT	-	2
Lanner Falcon	NT	6	4
Blue Korhaan	NT	30	20
Caspian Tern	NT	13	-
White Stork	Bonn	3	2

CR = Critically Endangered; EN = Endangered; V = Vulnerable; NT = Near-threatened; Bonn = Protected Internationally under the Bonn Convention on Migratory Species. Report rates are essentially percentages of the number of times a species was recorded in the square, divided by the number of times that square was counted.

Southern African Bird Atlas Project 2

SABAP 2 data was examined for the pentads falling within the 8 km radius from Tutuka Power Station (Figure 11 below), and which had been counted more than once. Table 2 below shows report rates, based on the number of cards submitted, for the Red Data species identified in the four pentads meeting the above criteria.

Interestingly, of the 16 red listed species identified in the SABAP 1 data, only 9 species have again been recorded in the SABAP 2 data for the pentads examined. This however, does not necessarily mean that these species do not occur here, or that they have moved from the area post SABAP1, but may merely be due to the low counting effort of the pentads or selective micro habitat counting by the SABAP2 field counters. White Stork, protected through the Bonn Convention, was recorded in both data sets. Botha's Lark was not recorded in pentads examined. An additional red listed species, the African Openbill, was recorded in the SABAP2 data only.

Table 2: Report rates from Southern African Bird Atlas Project 2 (SABAP2) as of 09/10/2012.

Species	Cons. status	Pentad Report Rate (%)			
		2645_2915	2645_2920	2640_2915	2650_2915
<i>Pentad</i>					
<i>No Cards</i>		12	3	16	4
<i>Total Species</i>		121	94	121	60
Botha's Lark	EN	-	-	-	-
African Marsh Harrier	VU	-	-	-	-
Lesser Kestrel	VU	-	-	-	-
Blue Crane	VU	-	-	-	-
Southern Bald Ibis	VU	16.7	-	-	-
White-bellied Korhaan	VU	-	-	-	-
Yellow-billed Stork	NT	-	-	-	-
African Openbill	NT	-	-	6.3	-
Secretary Bird	NT	8.3	-	-	-
Greater Flamingo	NT	41.7	33.3	-	-
Lesser Flamingo	NT	8.3	-	-	-
Lanner Falcon	NT	8.3	-	-	-
Blue Korhaan	NT	-	33.3	18.8	-
Caspian Tern	NT	-	-	-	50
Black-winged Pratincole	NT	8.3	-	6.3	-
Pallid Harrier	NT	16.7	-	-	-
White Stork	Bonn	8.3	-	-	-

CR = Critically Endangered; EN = Endangered; V = Vulnerable; NT = Near-threatened; Bonn = Protected Internationally under the Bonn Convention on Migratory Species. Species in bold were not recorded in the SABAP1 data set.

Table 3 below shows the micro habitats that each Red Data bird species typically frequents. It must be stressed that birds can and will, by virtue of their mobility, utilise almost any areas in a landscape from time to time. However, the analysis in Table 3 represents each species' most preferred or normal habitats. These locations are where most of the birds of that species will spend most of their time – so logically that is where impacts on those species will be most significant. By looking at these preferred habitats, considering the habitats available on site, analysing the reporting rates, as well as using personal experience, the author was able to predict the likelihood of occurrence of a particular species in the study area. Occurrence refers to a species making use of the site for purposes such as foraging, feeding, hunting, nesting and breeding, or regularly flying over as part of a flyway. This likelihood of occurrence is done with precaution at this initial scoping stage and refers to the entire study area (i.e. 8 km radius from Tutuka Power Station). This will be updated to apply to the development site only, once the specialist has accessed the site during the EIA phase.

Table 3: Preferred micro-habitat of red data species and their likelihood of occurrence in the study area.

Species	Cons. status	Preferred micro habitat	Likelihood of Occurrence
Botha's Lark	EN	Grazed upland grassland	Possible
African Marsh Harrier	VU	Wetlands, grasslands	Possible
Lesser Kestrel	VU	Savanna, grassland, shrubland, arable land	Likely
Blue Crane	VU	Grassland, wetland, arable land, dams	Likely
Southern Bald Ibis	VU	Short Grassland, Hills and Ridges, Cliffs (breeding)	Possible
White-bellied Korhaan	VU	Tall grassland, Savanna	Possible
Yellow-billed Stork	NT	Rivers, Lakes, Estuaries	Unlikely
African Openbill	NT	Freshwater lakes and dams. Rivers	Unlikely
Secretary Bird	NT	Grassland, arable lands	Possible
Greater Flamingo	NT	Shallow lakes, Salt Pans, Estuaries	Highly Likely
Lesser Flamingo	NT	Shallow lakes, Salt Pans, Estuaries	Highly Likely
Lanner Falcon	NT	Open grassland, woodland	Possible
Blue Korhaan	NT	Open Grassland	Highly Likely
Caspian Tern	NT	Bays, estuaries, lagoons and inland water bodies	Possible
Black-winged Pratincole	NT	Grassland, cultivated lands	Likely
Pallid Harrier	NT	Grassland and savanna	Possible
White Stork	Bonn	Grassland, arable lands, wetland, dams	Possible

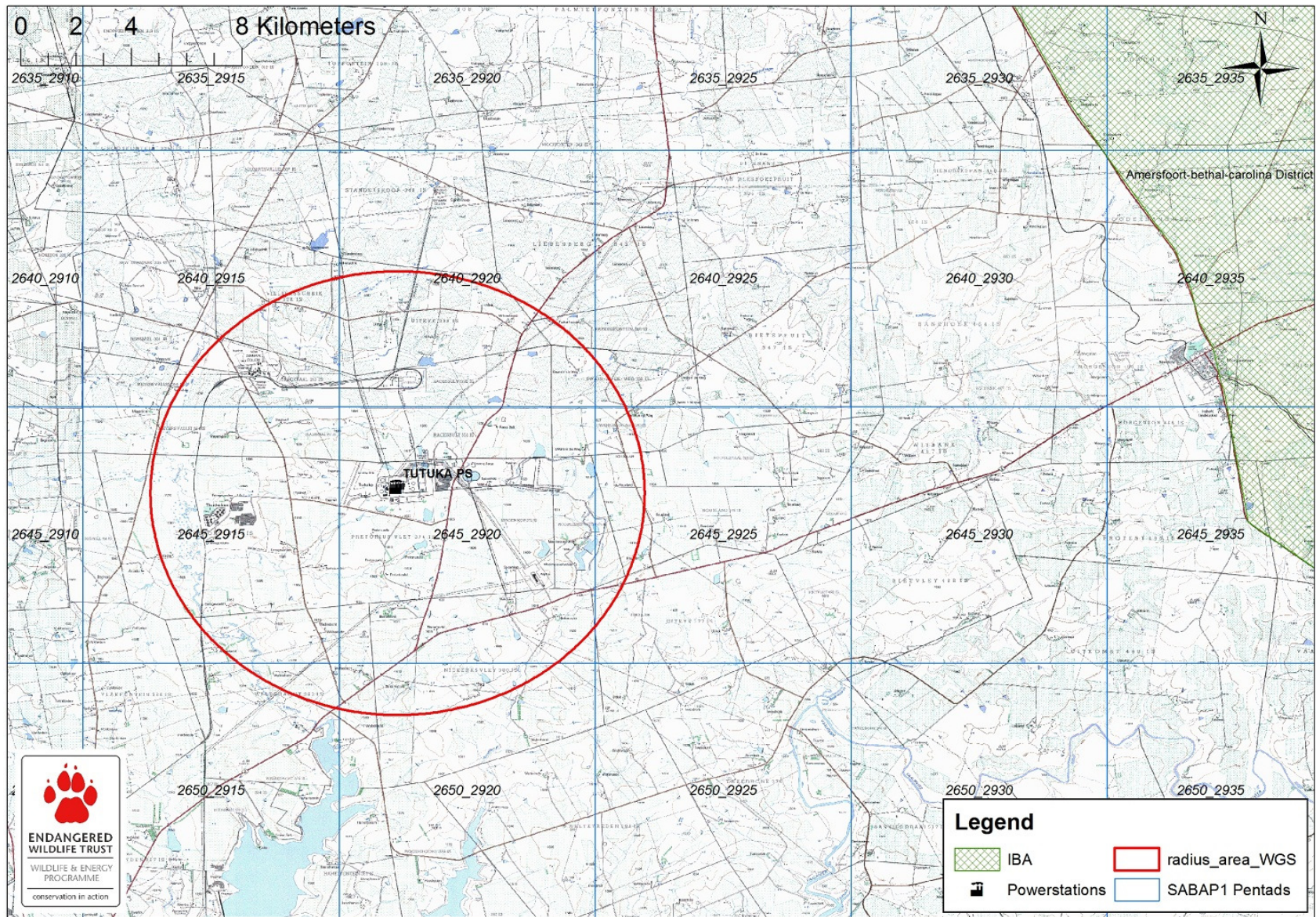


Figure 11: Map showing the location of the nearest IBA, as well as SABAP2 pentads in the study area.

Important Bird Areas (IBA's)

The site where continuous ashing is proposed does not fall within any Important Bird Area (IBA). However, the *Amersfoort-bethal-carolina District (SA018)* IBA lies approximately 27 km to the east of Tutuka Power Station, and it is not unlikely that some bird species found in this IBA, may occur in the study area. This IBA is known to hold a large proportion (>10%) of the global population of the endangered Botha's Lark (Barnes 1998). This species (Figure 12) favours short dense, natural grassland found on plateaus and upper hill slopes. The Globally threatened Wattled Crane was listed as a vagrant to this IBA, while other key listed species recorded in this IBA include Southern Bald Ibis, Lesser Kestrel, Blue Crane, African Grass Owl, Lanner Falcon and Blackwinged Lapwing.



Figure 12: The Endangered Botha's Lark may occur in grasslands in the study area.

Coordinated Avifaunal Road-count (CAR) data

There are no routes within 50 km of the general study area.

Coordinated Waterbird count (CWAC) data

New Denmark Dam CWAC site is situated within the study area (Figure 2), and is a private dam in a coal mining area. CWAC data here records large numbers of Redknobbed Coot, Egyptian Goose, Yellow-billed Duck, Blacksmith Lapwing, Little Stint and African Darter. Greater Flamingo has been recorded here on numerous occasions between 2005 and 2009, while Caspian Tern has also been recorded at this site.

Personal observations

Table 4 below shows the results of the point counts conducted in the study area during the site visit. Three (3) Observation Points (OP) were randomly chosen, all in the near vicinity of the proposed project. A 30-min point count was conducted at each OP, recording all species seen or heard, as well as the numbers thereof. The location of these point counts can be seen in Figure 2 above. Data from this table needs to be used with caution, as observations over such a short period, in one season, and in fairly similar weather conditions cannot be taken as a true indication of the presence of bird species in the area. In particular, the target species for this study are threatened, rare species, so the likelihood of seeing one during a point count is limited. This study has therefore attached far more weight to the secondary data sources such as the bird atlas projects (SABAP1 and SABAP2) which collected data over a far longer period, and more diverse conditions. It must be noted that many "non Red Data" bird species also occur in the study area and could be impacted on. Although this impact assessment focuses on Red Data species, the impact on non Red Data species is also assessed, albeit in less detail. Furthermore, much of the mitigation recommended for Red Data species will also protect non Red Data species in the study area.

Table 4: Results of the Point Count exercise, as well as species observed incidentally on site during the site visit.

<i>Observation Point</i>	OP 1	OP 2	OP 3	Incidental
<i>Predominant habitat</i>	<i>Grassland and drainage line</i>	<i>Cultivate lands and dam.</i>	<i>Dam</i>	
Specie observed:				
Cape Turtle Dove	2	H		X
Red-eyed Dove		H		
Cape Crow	2			
Helmeted Guinaefowl			7	X
Village Weaver	8			
African Stonechat	3	1		
Redcollared Widowbird	4			
Egyptian Goose	4		5	
Blacksmith Lapwing	2			X
Common Fiscal	1	1		X
Cape Sparrow		4		X
African Fish Eagle		1		
Blackthroated Canary		2		
Levaillant's Cisticola			2	X
Grey Heron		1		
Reed Cormorant			1	
White-breasted Cormorant			4	
Redknobbed Coot			3	X
South African Shelduck			2	
Greater Flamingo			17	
Lesser Flamingo			8	
Hadedda Ibis				X
African Sacred Ibis				X
Black-winged Stilt				X
Black-shouldered Kite				X
Greater Kestrel				X
Tawny-flanked Prinia				X
Swainson's Spurfowl				X
Long-tailed Widowbird				X
Red-capped Lark				X
Black-headed Heron				X
Laughing Dove				X
Crowned Lapwing				X
Rock Kestrel				X

The figures in the table refer to the number of individuals of that particular species recorded during the point count H = Heard and therefore number unknown. X = species recorded in study area, outside of point count time frames, but numbers not recorded.

Focal Species List

The focal species for this study, i.e. the most important species to be considered, will be updated following more detailed site investigations during the EIA phase of the project. At this stage, after examining all the above data sources, the resultant list of 'focal species' is as follows: **Blue Korhaan, Blue Crane, Southern Bald Ibis, Greater Flamingo, Lesser Flamingo, Secretary Bird, White Stork, Pallid Harrier, Lesser Kestrel, Caspian Tern**

and Botha's Lark. In some cases, these species serve as surrogates for other similar species (as mitigation will be effective for both), examples being White Stork for Yellow-billed Stork and Lesser Kestrel for Lanner Falcon. Assorted more common species will also be relevant to this study, but it is believed that the above focal species will to a large extent serve as surrogates for these in terms of impact assessment and management.

ASSESSMENT OF IMPACTS

Predicted Impacts of Ash Disposal Facilities

The greatest predicted impacts of ash disposal facilities on avifauna are the destruction of habitat and disturbance of birds during construction and operation. However, both of these impacts can be minimized and mitigated to some extent by avoiding more sensitive areas where possible. Similarly, the above mentioned construction and maintenance activities impact on birds through disturbance, particularly during bird breeding activities. Disturbance of birds is anticipated to be of lower significance than habitat destruction. Leachate from fly ash disposal facilities can contain heavy metals (Theism and Marley, 1979) which could result in contamination of surrounding water sources, used by water birds in the study area. Correct placing of the new disposal facility, away from wetlands, dams and water bodies, will help to mitigate this impact.

In addition to the continuous disposal of ash at the of the ash disposal facility, the project may also include the expansion of the relevant infrastructure associated with the ashing system, such as pipelines, storm water trenches, seepage water collection systems, pump stations, seepage dams, roads, etc. The impacts of such associated infrastructure on avifauna are predicted to be minimal, so long as the infrastructure is within the proposed ash disposal facility footprint. Infrastructure outside of the proposed footprint will be assessed in the EIA phase of the project. If any additional linear infrastructure, especially power lines, is to be constructed, the EWT will assess the impact thereof, once the routings have been made known. Below follows a brief description of impacts that may be associated with powerlines (should these be required as part of the proposed project):

General description of impacts of power lines on birds

Because of its size and prominence, electrical infrastructure constitutes an important interface between wildlife and man. Negative interactions between wildlife and electricity structures take many forms, but two common problems in southern Africa are electrocution of birds (and other animals) and birds colliding with power lines (Ledger 1983; Verdoorn

1996; Kruger 1999; Van Rooyen 2000). Other problems are electrical faults caused by bird excreta when roosting or breeding on electricity infrastructure, (Van Rooyen & Taylor 1999) and disturbance and habitat destruction during construction and maintenance activities.

Electrocutions

Electrocution of birds on overhead lines is an important cause of unnatural mortality of raptors and storks. It has attracted plenty of attention in Europe, USA and South Africa (APLIC 1994). Electrocution refers to the scenario where a bird is perched or attempts to perch on the electrical structure and causes an electrical short circuit by physically bridging the air gap between live components and/or live and earthed components (van Rooyen 2004). Electrocution is possible on 132kV lines or lower, depending on the exact pole structure used.

Collisions

Collisions are the biggest single threat posed by transmission lines to birds in southern Africa (van Rooyen 2004). Most heavily impacted upon are bustards, storks, cranes and various species of water birds. These species are mostly heavy-bodied birds with limited manoeuvrability, which makes it difficult for them to take the necessary evasive action to avoid colliding with power lines (van Rooyen 2004, Anderson 2001). Unfortunately, many of the collision sensitive species are considered threatened in southern Africa. The Red Data species vulnerable to power line collisions are generally long living, slow reproducing species under natural conditions. Some require very specific conditions for breeding, resulting in very few successful breeding attempts, or breeding might be restricted to very small areas. These species have not evolved to cope with high adult mortality, with the results that consistent high adult mortality over an extensive period could have a serious effect on a population's ability to sustain itself in the medium term or even in the long term. Many of the anthropogenic threats to these species are non-discriminatory as far as age is concerned (e.g. habitat destruction, disturbance and power lines) and therefore contribute to adult mortality, and it is not known what the cumulative effect of these impacts could be over the long term.

Habitat destruction

During the construction phase and maintenance of substations and power lines some habitat destruction and alteration inevitably takes place. This happens with the construction of access roads, and the clearing of servitudes, as well as clearing vegetation at the substation site. Servitudes have to be cleared of excess vegetation at regular intervals in order to allow access to the line for maintenance, to prevent vegetation from intruding into the legally prescribed clearance gap between the ground and the conductors and to minimize

the risk of fire under the line which can result in electrical flashovers. These activities have an impact on birds breeding, foraging and roosting in or in close proximity of the servitude through modification of habitat.

Disturbance

Similarly, the above mentioned construction and maintenance activities impact on bird through disturbance, particularly during bird breeding activities.

Identification of sensitive areas.

In general the site is moderate to highly sensitive in terms of avifauna, based on the occurrence of a number of listed species in the study area, as well as the various micro-habitats available to avifauna. The sensitive zones are mapped and described below.

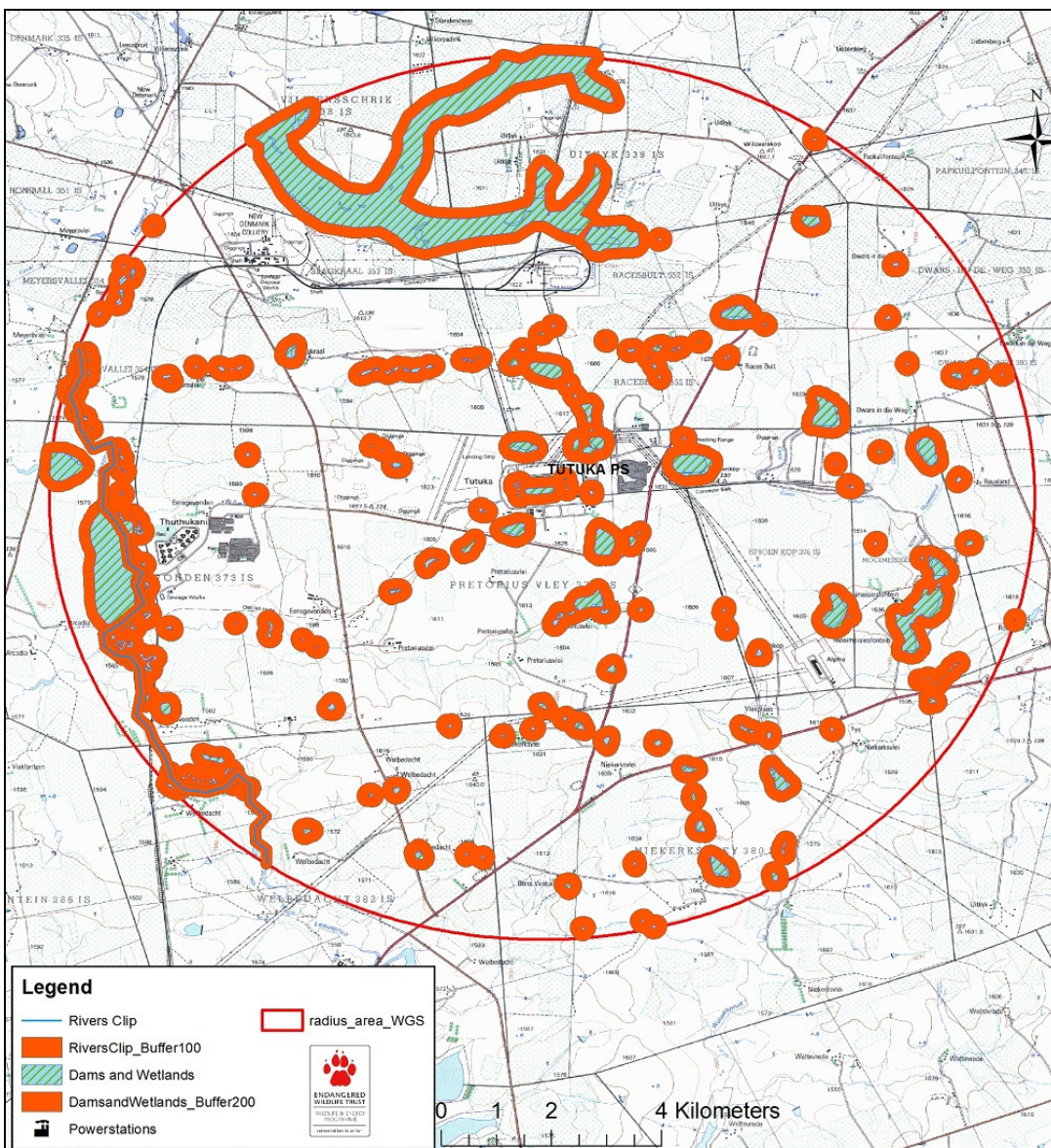


Figure 13: Preliminary avifaunal sensitivity map of the study area.

The above map (Figure 13) shows two features that have been buffered. These are the Rivers, and Wetland/dam areas. The rivers have been buffered by 100m using GIS, while the dams and wetlands have been buffered by 200m. The importance of these micro-habitats to avifauna has been discussed in earlier sections of this report. **All of these buffered zones are regarded as *Medium-High Sensitivity areas* and if possible should be avoided for construction activities. The remaining areas outside of these buffer zones are designated as *Low – Medium sensitivity*, although this is subject to change following the EIA phase site visit.**

Note that this sensitivity analysis is subject to change, following the site visit in the EIA phase, especially as some of the GIS layers may be outdated, and may not reflect the actual situation on the ground. Also note that certain natural grassland areas, as well as other drainage lines or wetland areas may also be designated as sensitive areas, should they be identified and mapped in the EIA phase.

CONCLUSION & EIA PLAN OF STUDY

In conclusion, the proposed project can continue to the EIA phase, and no fatal flaws have been identified in terms of avifauna. In general, the site has moderate to high sensitivity. The greatest impact of the proposed project is likely to be that of habitat destruction, while leachate from fly ash, into water systems used by avifauna is also of concern. Possible impacts of associated infrastructure (e.g. roads, power lines, pollution control dams, conveyors, pipelines and pump stations) will be assessed upon completion of the scoping phase, however collisions are expected to be the largest impact of associated power lines this project (assuming that “bird-friendly” pylon structures are used which prevent the impact of electrocution) and some line marking may be a suitable mitigation method for this. The presence of both Greater and Lesser Flamingos in New Denmark Dam is of concern, as both of these species are sensitive to collision. Sensitive areas have been mapped, within which the abovementioned collision mitigation must be implemented.

The following is recommended for the EIA phase of this avifaunal study:

- A detailed site visit will be conducted, and the actual affected farm portions will be traversed.
- The table showing SABAP2 data will be updated.
- All identified impacts will be rated according to a pre-determined set of criteria, as supplied by Lidwala Consulting Engineers.
- The sensitivity map will be “fine tuned” and revised if necessary.

- Details of associated infrastructure will be obtained, in order to thoroughly assess the possible impacts thereof.
- New or additional information, deemed relevant by the avifaunal specialist, will be added to the report.
- A final avifaunal EIA report will be compiled.

REFERENCES

Avian Power Line Interaction Committee (APLIC). 1994. *Mitigating Bird Collisions with Power Lines: The State of the Art in 1994*. Edison Electric Institute. Washington D.C.

Anderson, M.D. 2001. *The effectiveness of two different marking devices to reduce large terrestrial bird collisions with overhead electricity cables in the eastern Karoo, South Africa*. Draft report to Eskom Resources and Strategy Division. Johannesburg. South Africa.

Barnes, K.N. (ed). 1998. *The Important Bird Areas of Southern Africa*. Birdlife South Africa, Johannesburg.

Barnes, K.N. (ed.) 2000. *The Eskom Red Data Book of Birds of South Africa, Lesotho and Swaziland*. BirdLife South Africa: Johannesburg.

Harrison, J.A., Allan, D.G., Underhill, L.G., Herremans, M., Tree, A.J., Parker, V & Brown, C.J. (eds). 1997. *The atlas of southern African birds*. Vol. 1&2. BirdLife South Africa: Johannesburg.

Kruger, R. 1999. *Towards solving raptor electrocutions on Eskom Distribution Structures in South Africa*. M. Phil. Mini-thesis. University of the Orange Free State. Bloemfontein. South Africa.

Ledger, J. 1983. *Guidelines for Dealing with Bird Problems of Transmission Lines and Towers*. Eskom Test and Research Division Technical Note TRR/N83/005.

Mucina & Rutherford. 2006. *The vegetation of South Africa, Lesotho and Swaziland*. Strelitzia 19. South African National Biodiversity Institute, Pretoria.

Taylor, P.B., Navarro, R.A., Wren-Sargent, M., Harrison, J.A. & Kieswetter, S.L. 1999. *Coordinated waterbird Counts in South Africa, 1992-1997*. Avian Demography Unit, Cape Town.

Theis, T. L. and Marley, J.J. (1979). *Environmental Consideration for Fly Ash*. Journal of the Energy Division 105 (1).

Van Rooyen, C.S. 2000. "An overview of Vulture Electrocutions in South Africa." *Vulture News*, 43, pp 5-22. Vulture Study Group: Johannesburg, South Africa.

Van Rooyen, C.S. 2004a. The Management of Wildlife Interactions with overhead lines. In *The fundamentals and practice of Overhead Line Maintenance (132kV and above)*, pp217-245. Eskom Technology, Services International, Johannesburg.

Van Rooyen, C.S. 2004b. Investigations into vulture electrocutions on the Edwardsdam-Mareetsane 88kV feeder, unpublished report, Endangered Wildlife Trust, Johannesburg.

Van Rooyen, C.S. & Taylor, P.V. 1999. *Bird Streamers as probable cause of electrocutions in South Africa*. (EPRI Workshop on Avian Interactions with Utility Structures 2-3 December 1999. Charleston, South Carolina)

Verdoorn, G.H. 1996. *Mortality of Cape Griffons *Gyps coprotheres* and African Whitebacked Vultures *Pseudogyps africanus* on 88kV and 132kV power lines in Western Transvaal, South Africa, and mitigation measures to prevent future problems*. (2nd International Conference on Raptors: 2-5 October 1996. Urbino, Italy.)