

**SCREENING REPORT FOR AN ENVIRONMENTAL AUTHORIZATION AS
REQUIRED BY THE 2014 EIA REGULATIONS – PROPOSED SITE
ENVIRONMENTAL SENSITIVITY**

EIA Reference number:

Project name: Kimberley Nursing College and Student Accommodation

Project title: Nursing College and Student Accommodation

Date screening report generated: 05/08/2021 12:25:34

Applicant: Department of Roads and Public Works Northern Cape

Compiler: Environmental Management Group (EMG)

Compiler signature:
.....

Application Category: Transformation of land | Indigenous vegetation

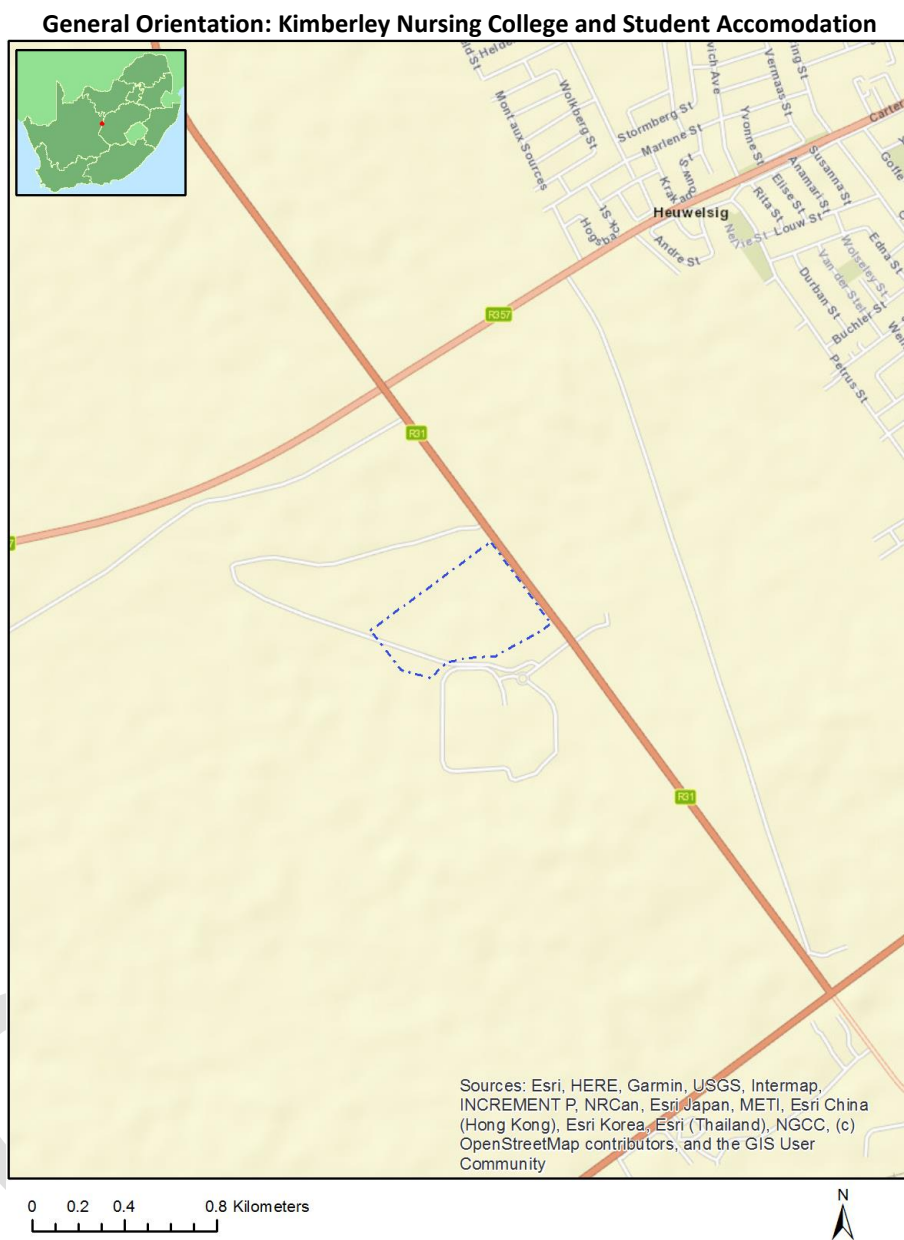


Table of Contents

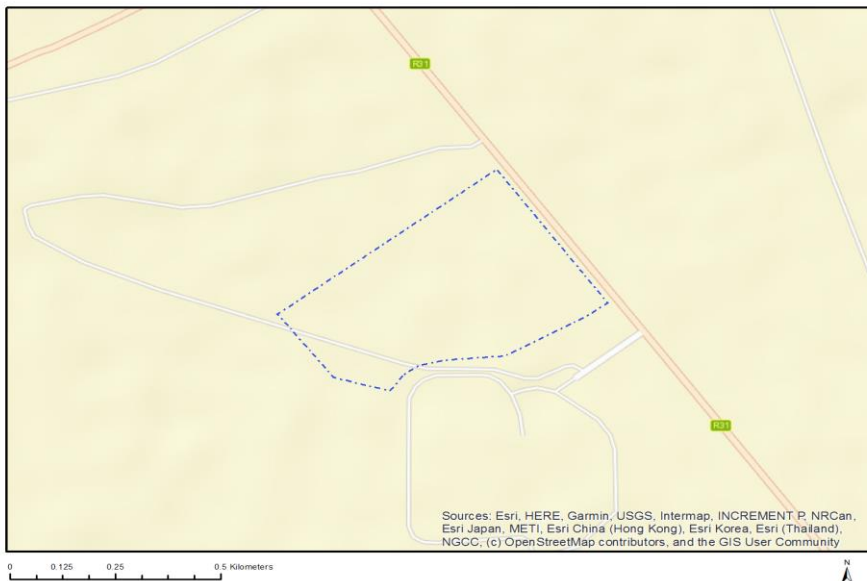
Proposed Project Location	3
Orientation map 1: General location	3
Map of proposed site and relevant area(s)	4
Cadastral details of the proposed site	4
Wind and Solar developments with an approved Environmental Authorisation or applications under consideration within 30 km of the proposed area	4
Environmental Management Frameworks relevant to the application	5
Environmental screening results and assessment outcomes	5
Relevant development incentives, restrictions, exclusions or prohibitions	5
Map indicating proposed development footprint within applicable development incentive, restriction, exclusion or prohibition zones	6
Proposed Development Area Environmental Sensitivity	6
Specialist assessments identified	7
Results of the environmental sensitivity of the proposed area	9
MAP OF RELATIVE AGRICULTURE THEME SENSITIVITY	9
MAP OF RELATIVE ANIMAL SPECIES THEME SENSITIVITY	10
MAP OF RELATIVE AQUATIC BIODIVERSITY THEME SENSITIVITY	11
MAP OF RELATIVE ARCHAEOLOGICAL AND CULTURAL HERITAGE THEME SENSITIVITY	12
MAP OF RELATIVE CIVIL AVIATION THEME SENSITIVITY	13
MAP OF RELATIVE DEFENCE THEME SENSITIVITY	14
MAP OF RELATIVE PALEONTOLOGY THEME SENSITIVITY	15
MAP OF RELATIVE PLANT SPECIES THEME SENSITIVITY	16
MAP OF RELATIVE TERRESTRIAL BIODIVERSITY THEME SENSITIVITY	17

Proposed Project Location

Orientation map 1: General location



Map of proposed site and relevant area(s)



Cadastral details of the proposed site

Property details:

No	Farm Name	Farm/ Erf No	Portion	Latitude	Longitude	Property Type
1	KIMBERLEY	42654	0	28°46'22.78S	24°43'22.18E	Erven
2	BULTFONTEIN	80	0	28°46'5.75S	24°43'56.91E	Farm

Development footprint¹ vertices:
No development footprint(s) specified.

Wind and Solar developments with an approved Environmental Authorisation or applications under consideration within 30 km of the proposed area

No	EIA Reference No	Classification	Status of application	Distance from proposed area (km)
1	12/12/20/2024/1/1	Solar PV	Approved	16.3
2	12/12/20/2138	Solar PV	Approved	9.7
3	12/12/20/2024/2	Solar PV	Approved	16.4
4	12/12/20/2148	Solar PV	Approved	3.3
5	12/12/20/2251/2	Solar CSP	Approved	8.1
6	14/12/16/3/3/392	Solar PV	Approved	21.2
7	14/12/16/3/3/2/392	Solar PV	Approved	21.2
8	12/12/20/2124	Solar PV	Approved	8.7

¹ "development footprint", means the area within the site on which the development will take place and includes all ancillary developments for example roads, power lines, boundary walls, paving etc. which require vegetation clearance or which will be disturbed and for which the application has been submitted.

9	12/12/20/2024	Solar CSP and PV	Approved	16.3
10	12/12/20/2251/1	Solar PV	Approved	9
11	12/12/20/2024/1A	Solar PV	Approved	16.3
12	12/12/20/2024/1A	Solar PV	Approved	16.3

Environmental Management Frameworks relevant to the application

No intersections with EMF areas found.

Environmental screening results and assessment outcomes

The following sections contain a summary of any development incentives, restrictions, exclusions or prohibitions that apply to the proposed development site as well as the most environmental sensitive features on the site based on the site sensitivity screening results for the application classification that was selected. The application classification selected for this report is:

Transformation of land | Indigenous vegetation.

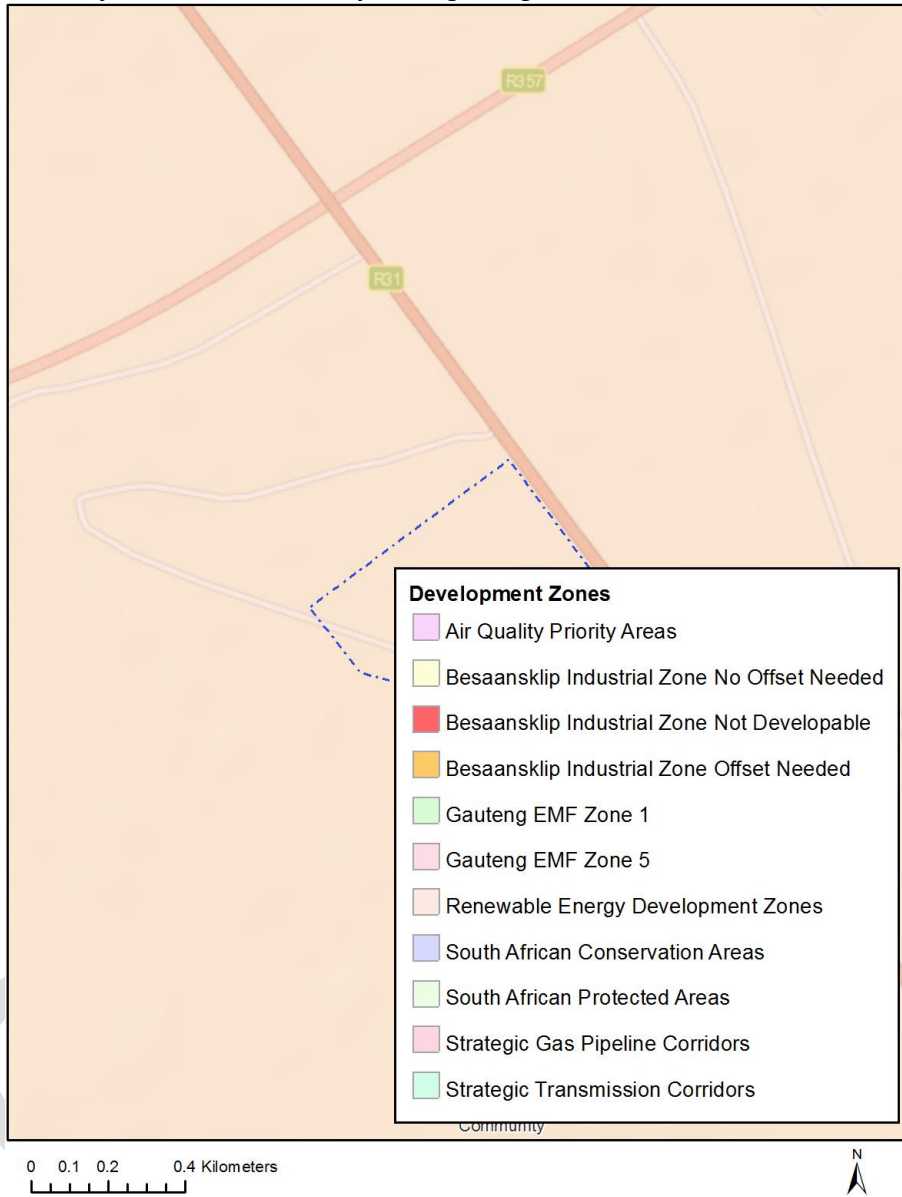
Relevant development incentives, restrictions, exclusions or prohibitions

The following development incentives, restrictions, exclusions or prohibitions and their implications that apply to this site are indicated below.

Incentive, restriction or prohibition	Implication
Strategic Transmission Corridor-Central corridor	https://screening.environment.gov.za/ScreeningDownloads/DevelopmentZones/GN_113_16_February_2018.pdf
Renewable energy development zones 5-Kimberley	https://screening.environment.gov.za/ScreeningDownloads/DevelopmentZones/GN_114_of_16_February_2018.pdf

Map indicating proposed development footprint within applicable development incentive, restriction, exclusion or prohibition zones

Project Location: Kimberley Nursing College and Student Accommodation



Proposed Development Area Environmental Sensitivity

The following summary of the development site environmental sensitivities is identified. Only the highest environmental sensitivity is indicated. The footprint environmental sensitivities for the proposed development footprint as identified, are indicative only and must be verified on site by a suitably qualified person before the specialist assessments identified below can be confirmed.

Theme	Very High sensitivity	High sensitivity	Medium sensitivity	Low sensitivity
Agriculture Theme			X	
Animal Species Theme		X		

Aquatic Biodiversity Theme				X
Archaeological and Cultural Heritage Theme				X
Civil Aviation Theme		X		
Defence Theme				X
Paleontology Theme			X	
Plant Species Theme			X	
Terrestrial Biodiversity Theme				X

Specialist assessments identified

Based on the selected classification, and the environmental sensitivities of the proposed development footprint, the following list of specialist assessments have been identified for inclusion in the assessment report. It is the responsibility of the EAP to confirm this list and to motivate in the assessment report, the reason for not including any of the identified specialist study including the provision of photographic evidence of the site situation.

N o	Specialist assessment	Assessment Protocol
1	Landscape/Visual Impact Assessment	https://screening.environment.gov.za/ScreeningDownloads/AssessmentProtocols/Gazetted_General_Requirement_Assessment_Protocols.pdf
2	Archaeological and Cultural Heritage Impact Assessment	https://screening.environment.gov.za/ScreeningDownloads/AssessmentProtocols/Gazetted_General_Requirement_Assessment_Protocols.pdf
3	Palaeontology Impact Assessment	https://screening.environment.gov.za/ScreeningDownloads/AssessmentProtocols/Gazetted_General_Requirement_Assessment_Protocols.pdf
4	Terrestrial Biodiversity Impact Assessment	https://screening.environment.gov.za/ScreeningDownloads/AssessmentProtocols/Gazetted_Terrestrial_Biodiversity_Assessment_Protocols.pdf
5	Aquatic Biodiversity Impact Assessment	https://screening.environment.gov.za/ScreeningDownloads/AssessmentProtocols/Gazetted_Aquatic_Biodiversity_Assessment_Protocols.pdf
6	Avian Impact Assessment	https://screening.environment.gov.za/ScreeningDownloads/AssessmentProtocols/Gazetted_Avifauna_Assessment_Protocols.pdf
7	Socio-Economic	https://screening.environment.gov.za/ScreeningDownloads/AssessmentProtocols/Gazetted_General_Requirement_Assessment_Protocols.pdf

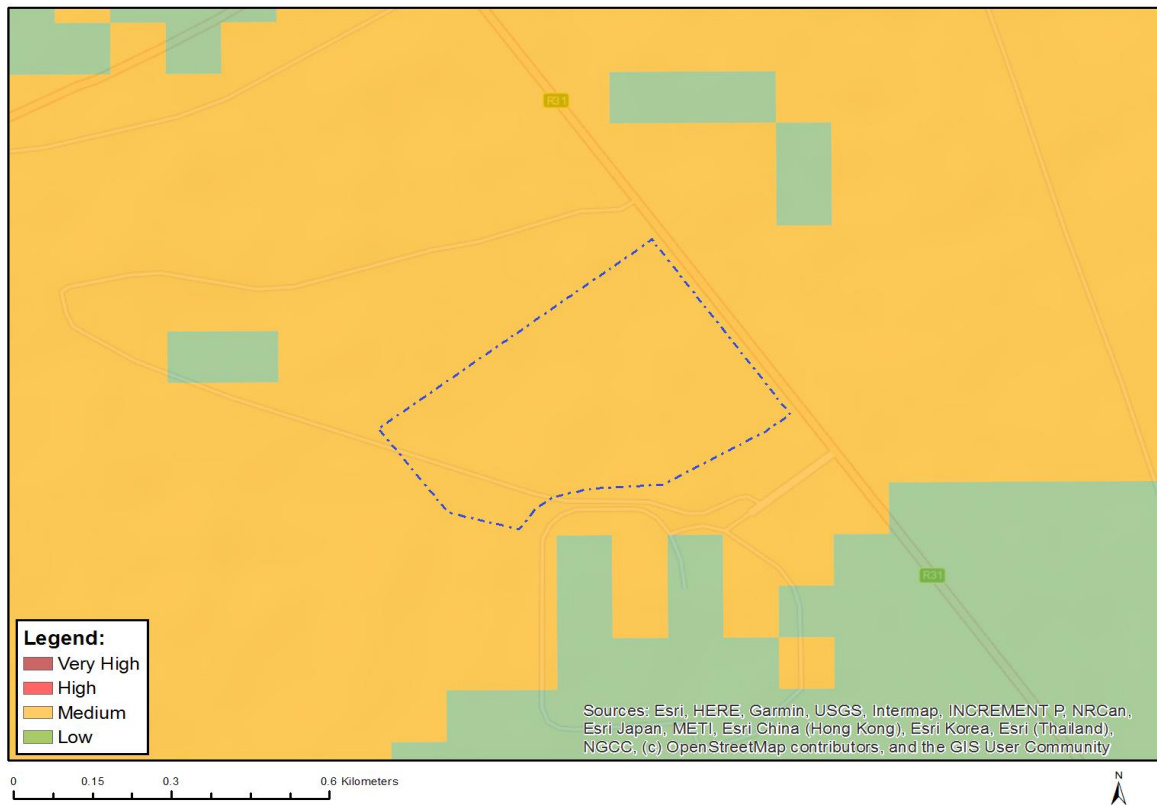
	Assessment	
8	Plant Species Assessment	https://screening.environment.gov.za/ScreeningDownloads/AssessmentProtocols/Gazetted_Plant_Species_Assessment_Protocols.pdf
9	Animal Species Assessment	https://screening.environment.gov.za/ScreeningDownloads/AssessmentProtocols/Gazetted_Animal_Species_Assessment_Protocols.pdf

OFFICIAL

Results of the environmental sensitivity of the proposed area.

The following section represents the results of the screening for environmental sensitivity of the proposed site for relevant environmental themes associated with the project classification. It is the duty of the EAP to ensure that the environmental themes provided by the screening tool are comprehensive and complete for the project. Refer to the disclaimer.

MAP OF RELATIVE AGRICULTURE THEME SENSITIVITY

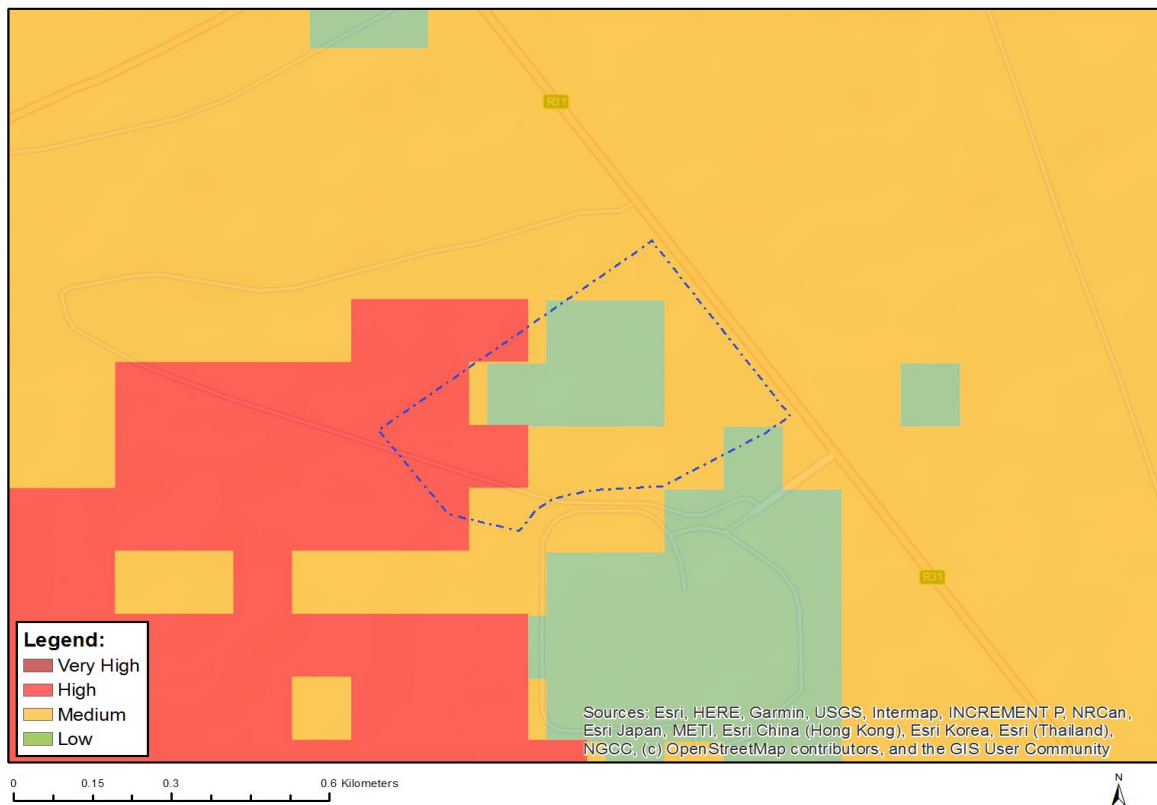


Very High sensitivity	High sensitivity	Medium sensitivity	Low sensitivity
		X	

Sensitivity Features:

Sensitivity	Feature(s)
Medium	Land capability;06. Low-Moderate/07. Low-Moderate/08. Moderate

MAP OF RELATIVE ANIMAL SPECIES THEME SENSITIVITY



Where only a sensitive plant unique number or sensitive animal unique number is provided in the screening report and an assessment is required, the environmental assessment practitioner (EAP) or specialist is required to email SANBI at eiadatarequests@sanbi.org.za listing all sensitive species with their unique identifiers for which information is required. The name has been withheld as the species may be prone to illegal harvesting and must be protected. SANBI will release the actual species name after the details of the EAP or specialist have been documented.

Very High sensitivity	High sensitivity	Medium sensitivity	Low sensitivity
	X		

Sensitivity Features:

Sensitivity	Feature(s)
High	Aves-Sagittarius serpentarius
Low	Low sensitivity
Medium	Aves-Neotis ludwigii

MAP OF RELATIVE AQUATIC BIODIVERSITY THEME SENSITIVITY



Very High sensitivity	High sensitivity	Medium sensitivity	Low sensitivity
			X

Sensitivity Features:

Sensitivity	Feature(s)
Low	Low sensitivity

MAP OF RELATIVE ARCHAEOLOGICAL AND CULTURAL HERITAGE THEME SENSITIVITY

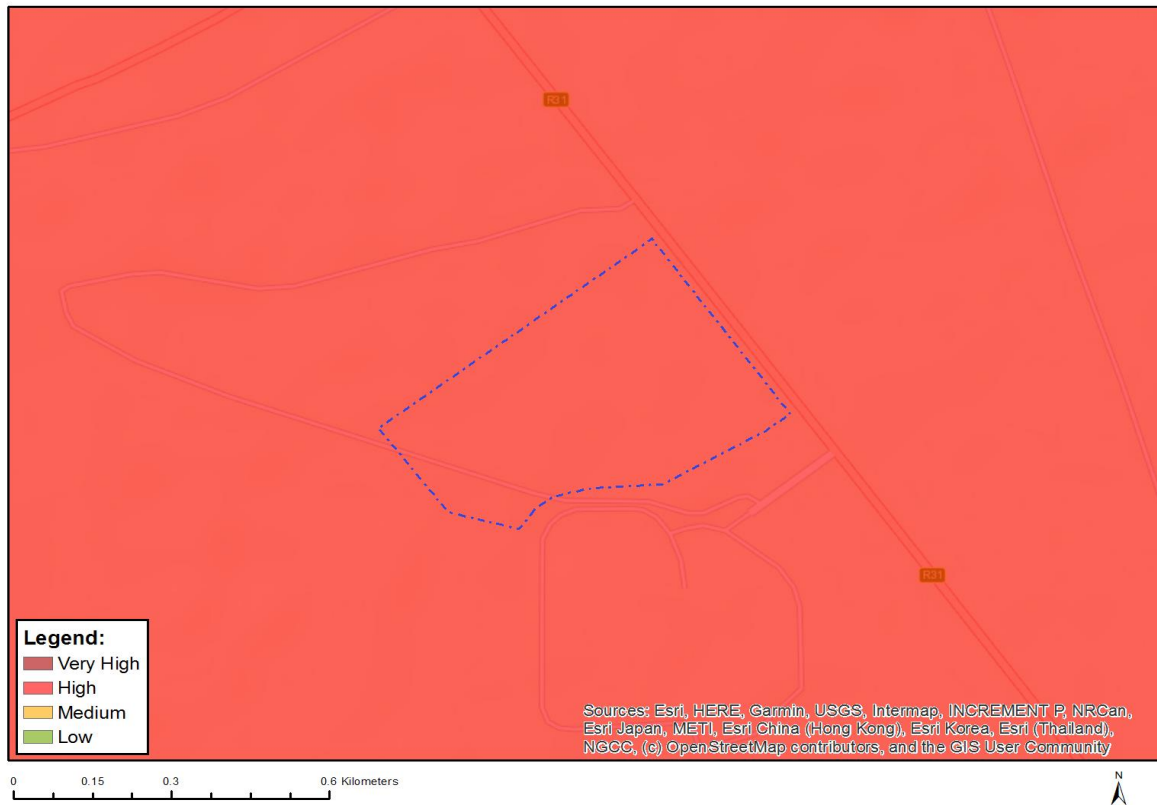


Very High sensitivity	High sensitivity	Medium sensitivity	Low sensitivity
			X

Sensitivity Features:

Sensitivity	Feature(s)
Low	Low sensitivity

MAP OF RELATIVE CIVIL AVIATION THEME SENSITIVITY



Very High sensitivity	High sensitivity	Medium sensitivity	Low sensitivity
	X		

Sensitivity Features:

Sensitivity	Feature(s)
High	Within 8 km of other civil aviation aerodrome
Medium	Within 5 km of an air traffic control or navigation site

MAP OF RELATIVE DEFENCE THEME SENSITIVITY

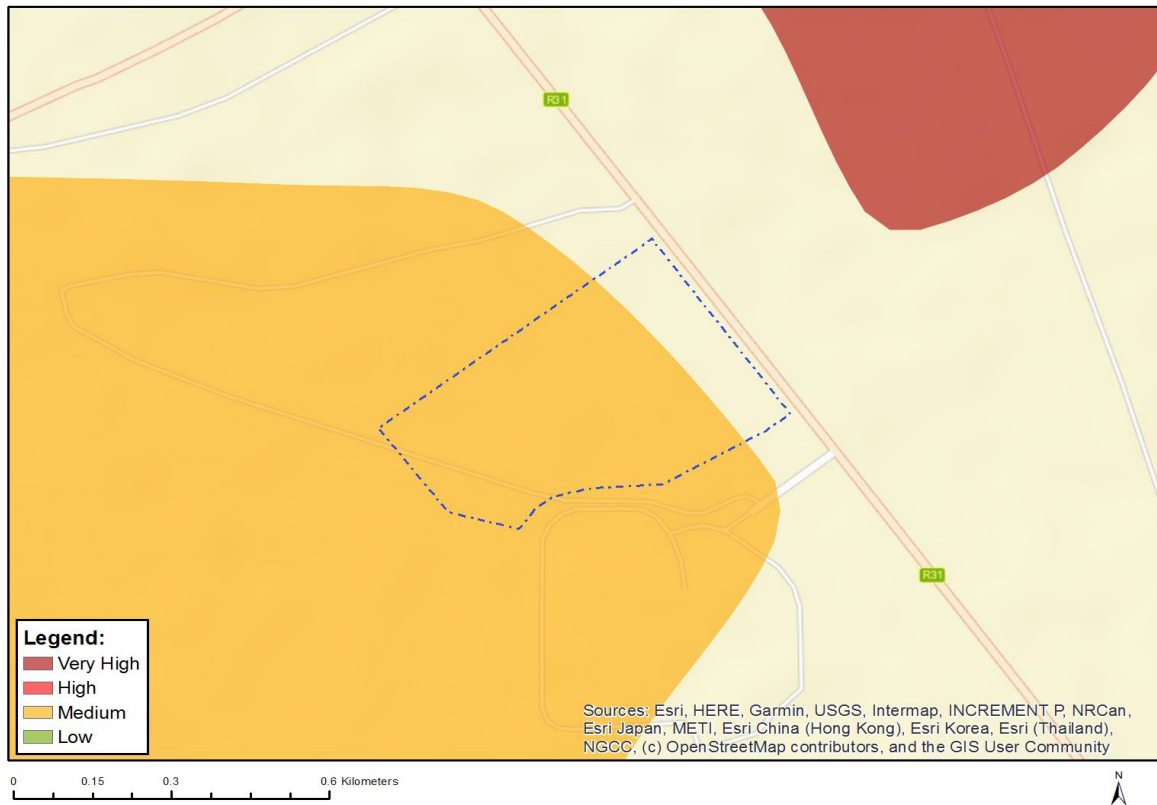


Very High sensitivity	High sensitivity	Medium sensitivity	Low sensitivity
			X

Sensitivity Features:

Sensitivity	Feature(s)
Low	Low Sensitivity

MAP OF RELATIVE PALEONTOLOGY THEME SENSITIVITY

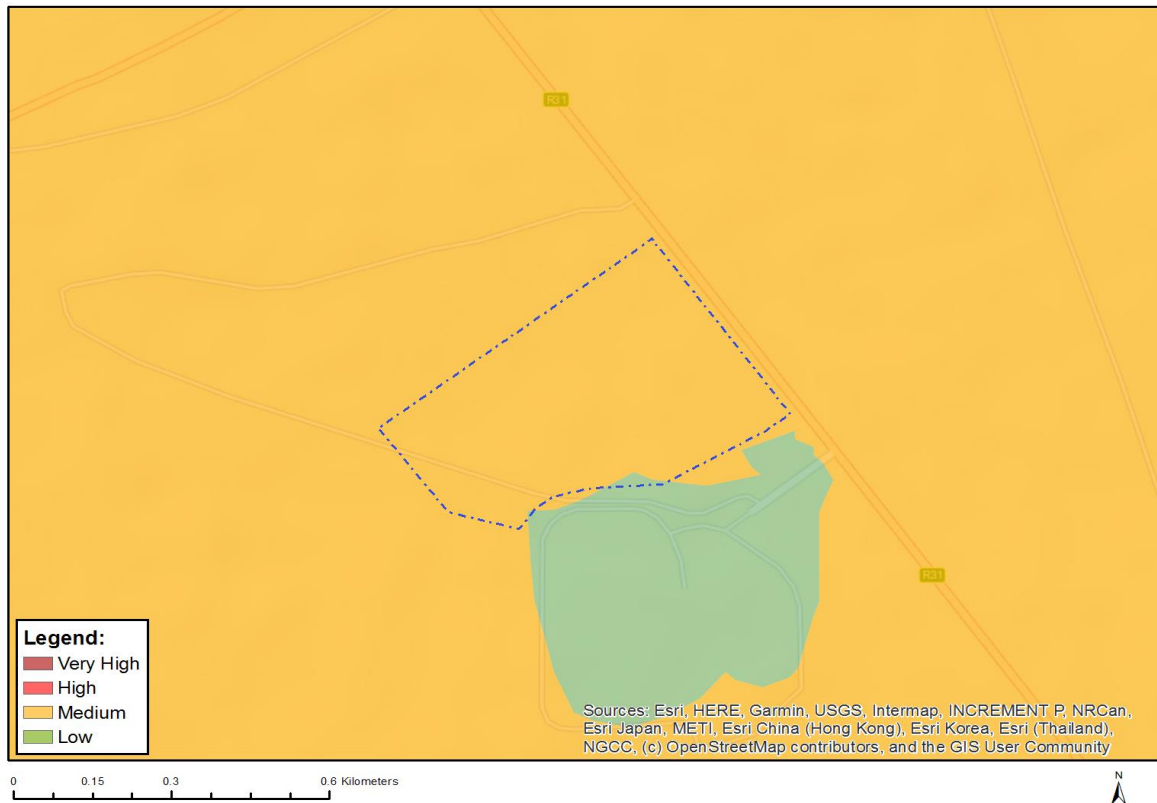


Very High sensitivity	High sensitivity	Medium sensitivity	Low sensitivity
		X	

Sensitivity Features:

Sensitivity	Feature(s)
Medium	Features with a Medium paleontological sensitivity

MAP OF RELATIVE PLANT SPECIES THEME SENSITIVITY



Where only a sensitive plant unique number or sensitive animal unique number is provided in the screening report and an assessment is required, the environmental assessment practitioner (EAP) or specialist is required to email SANBI at eiadatarequests@sanbi.org.za listing all sensitive species with their unique identifiers for which information is required. The name has been withheld as the species may be prone to illegal harvesting and must be protected. SANBI will release the actual species name after the details of the EAP or specialist have been documented.

Very High sensitivity	High sensitivity	Medium sensitivity	Low sensitivity
		X	

Sensitivity Features:

Sensitivity	Feature(s)
Low	Low Sensitivity
Medium	Sensitive species 257

MAP OF RELATIVE TERRESTRIAL BIODIVERSITY THEME SENSITIVITY



Very High sensitivity	High sensitivity	Medium sensitivity	Low sensitivity
			X

Sensitivity Features:

Sensitivity	Feature(s)
Low	Low Sensitivity

MOTIVATION FOR THE INCLUSION/ EXCLUSION OF CERTAIN SPECIALIST STUDIES AS INDICATED IN THE DFFE SCREENING TOOL

This document functions as a review of the DFFE Screening Tool for the proposed Kimberley nursing college phase two (2) and student accommodation. For more information, see the DFFE screening tool in **Appendix J**. See below a summary of the DFFE screening tool's outputs (Table 1).

Table 1 Environmental sensitivity as per the DFFE screening tool

Theme	Very High sensitivity	High sensitivity	Medium sensitivity	Low sensitivity
Agriculture Theme			X	
Animal Species Theme		X		
Aquatic Biodiversity Theme				X
Archaeological and Cultural Heritage Theme				X
Civil Aviation Theme		X		
Defence Theme				X
Palaeontology Theme			X	
Plant Species Theme			X	
Terrestrial Biodiversity Theme				X

Based on the DFFE Screening Tool output, the following specialist studies were identified (Table 2).

Table 2 List of specialist assessments required as per the DFFE screening tool.

N o	Specialist assessment
1	Landscape/Visual Impact Assessment
2	Archaeological and Cultural Heritage Impact Assessment
3	Palaeontology Impact Assessment
4	Terrestrial Biodiversity Impact Assessment
5	Aquatic Biodiversity Impact Assessment
6	Avian Impact Assessment
7	Socio-Economic Assessment
8	Plant Species Assessment

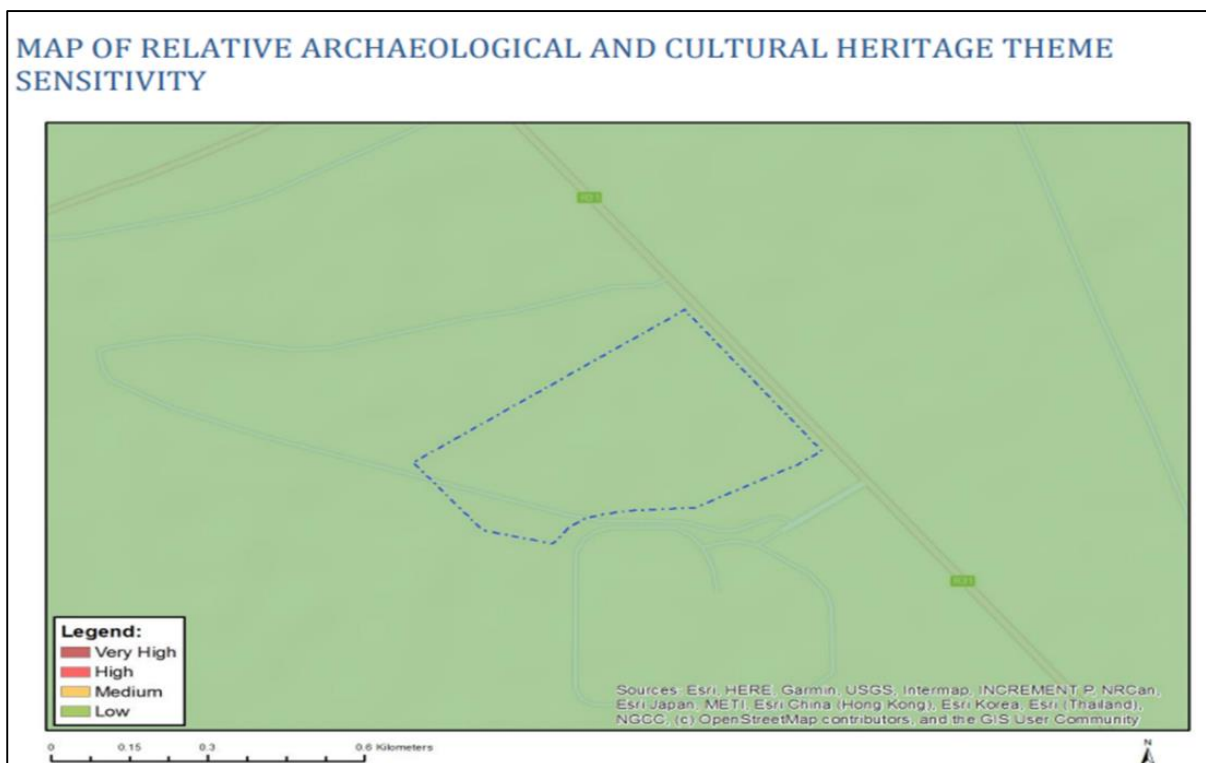
The section that follows aims to provide background as to the inclusion / exclusion of certain specialist assessments.

1. LANDSCAPE THEME SENSITIVITY

1.1. MOTIVATION FOR EXCLUSION:

The EAP has deemed it unnecessary to include a landscape/visual impact assessment for the proposed development of the Kimberley nursing phase two (2) and student accommodation, as it is situated adjacent to the well-developed Kimberley mental health facility and conforms to the surrounding environment. The EAP also considers the anticipated built up environment following the completion of the phase 2 development, similar and complimentary to the already built up environment existing in the area.

2. MAP OF RELATIVE ARCHAEOLOGICAL AND CULTURAL HERITAGE THEME SENSITIVITY



Very High sensitivity	High sensitivity	Medium sensitivity	Low sensitivity
			X

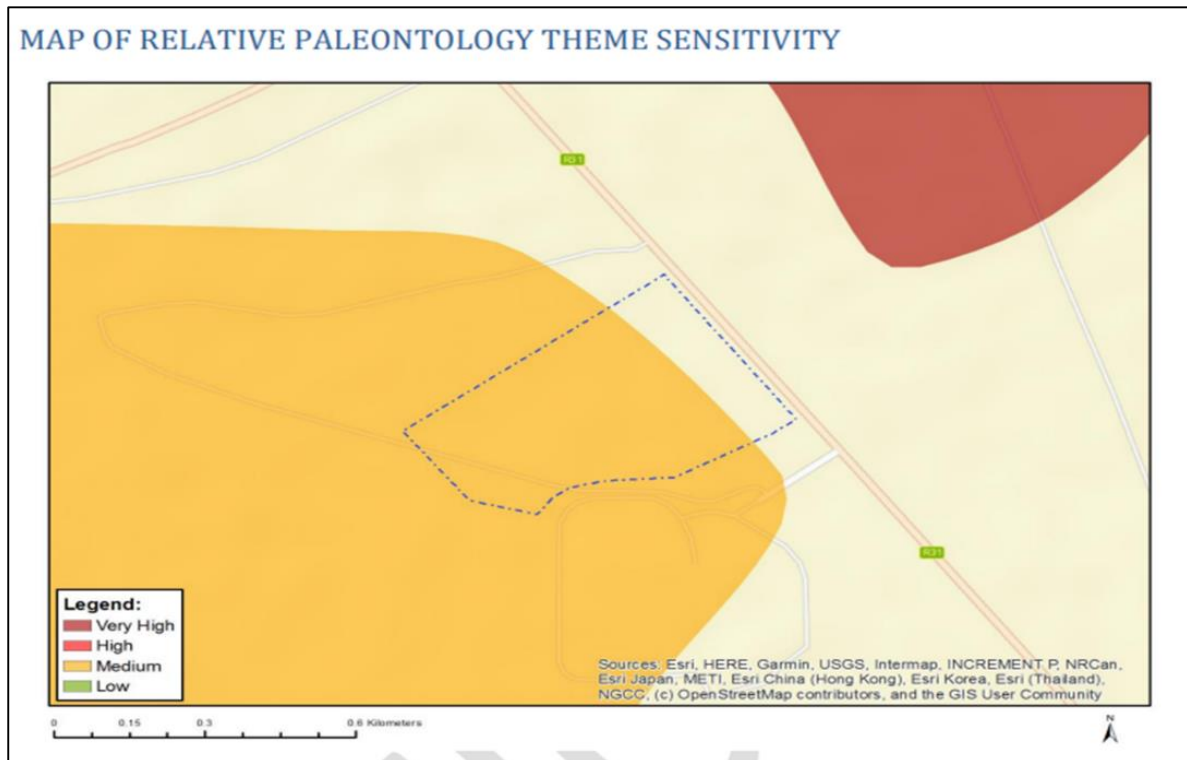
Sensitivity Features:

Sensitivity	Feature(s)
Low	Low sensitivity

2.1. MOTIVATION FOR EXCLUSION:

A Phase 1 HIA study was already conducted and included in the BAR (**Appendix D**).

3. PALEONTOLOGY THEME SENSITIVITY



Very High sensitivity	High sensitivity	Medium sensitivity	Low sensitivity
		X	

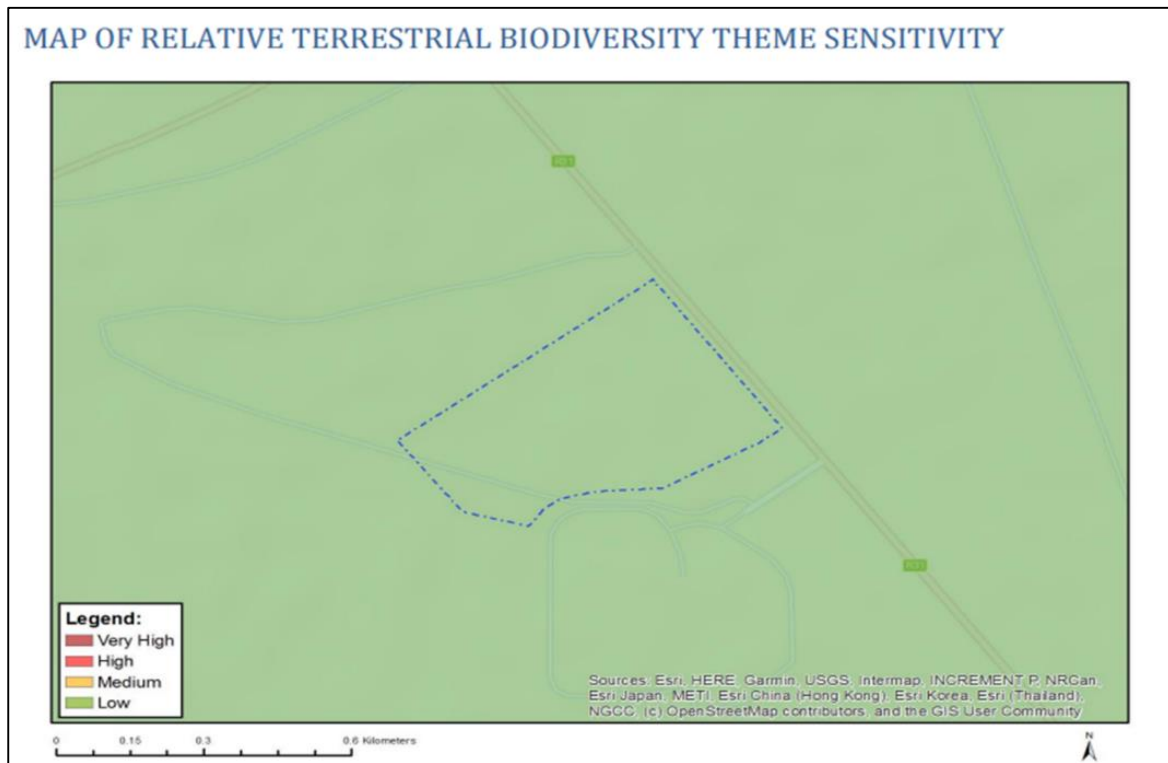
Sensitivity Features:

Sensitivity	Feature(s)
Medium	Features with a Medium paleontological sensitivity

3.1. MOTIVATION FOR EXCLUSION:

A Phase 1 HIA study was already conducted and included in the BAR (**Appendix D**). Aspects concerning Paleontological themes were included in the phase one HIA study.

4. TERRESTRIAL BIODIVERSITY THEME SENSITIVITY



Very High sensitivity	High sensitivity	Medium sensitivity	Low sensitivity
			X

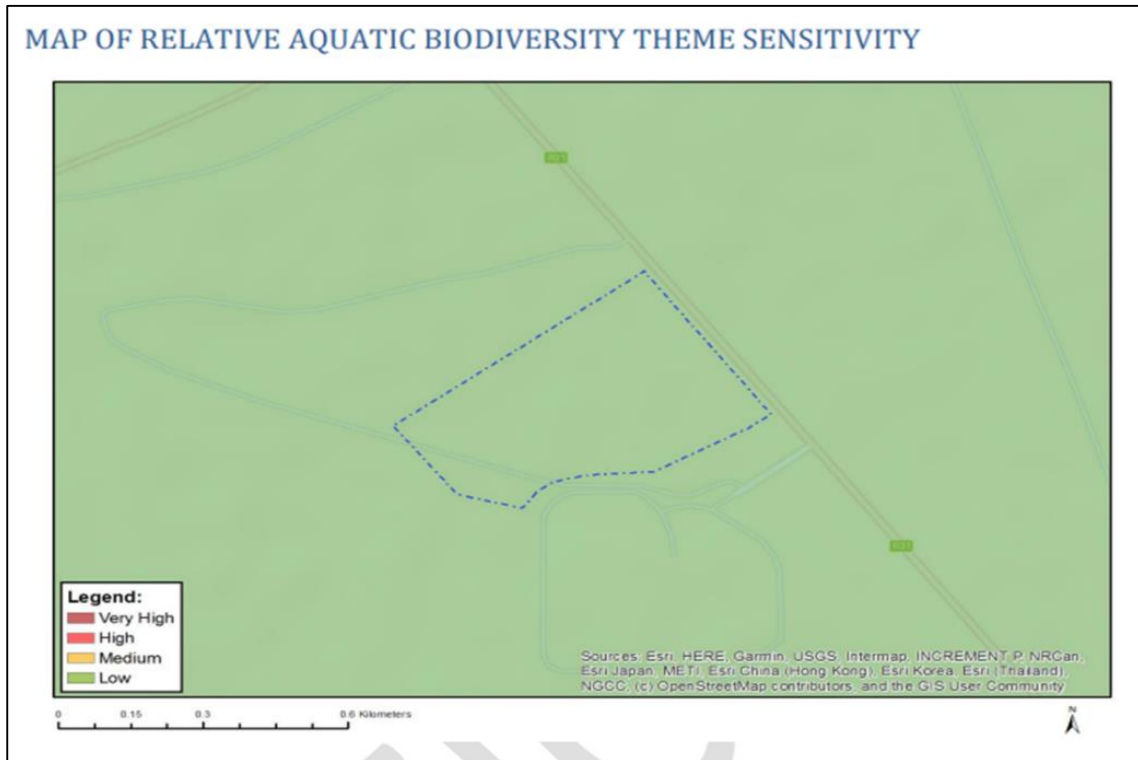
Sensitivity Features:

Sensitivity	Feature(s)
Low	Low sensitivity

4.1. MOTIVATION FOR EXCLUSION:

A terrestrial ecological study addresses biodiversity concerns (**Appendix D**). These studies have already been conducted and are included in the BAR.

5. MAP OF RELATIVE AQUATIC BIODIVERSITY THEME SENSITIVITY



Very High sensitivity	High sensitivity	Medium sensitivity	Low sensitivity
			X

Sensitivity Features:

Sensitivity	Feature(s)
Low	Low sensitivity

5.1. MOTIVATION FOR EXCLUSION:

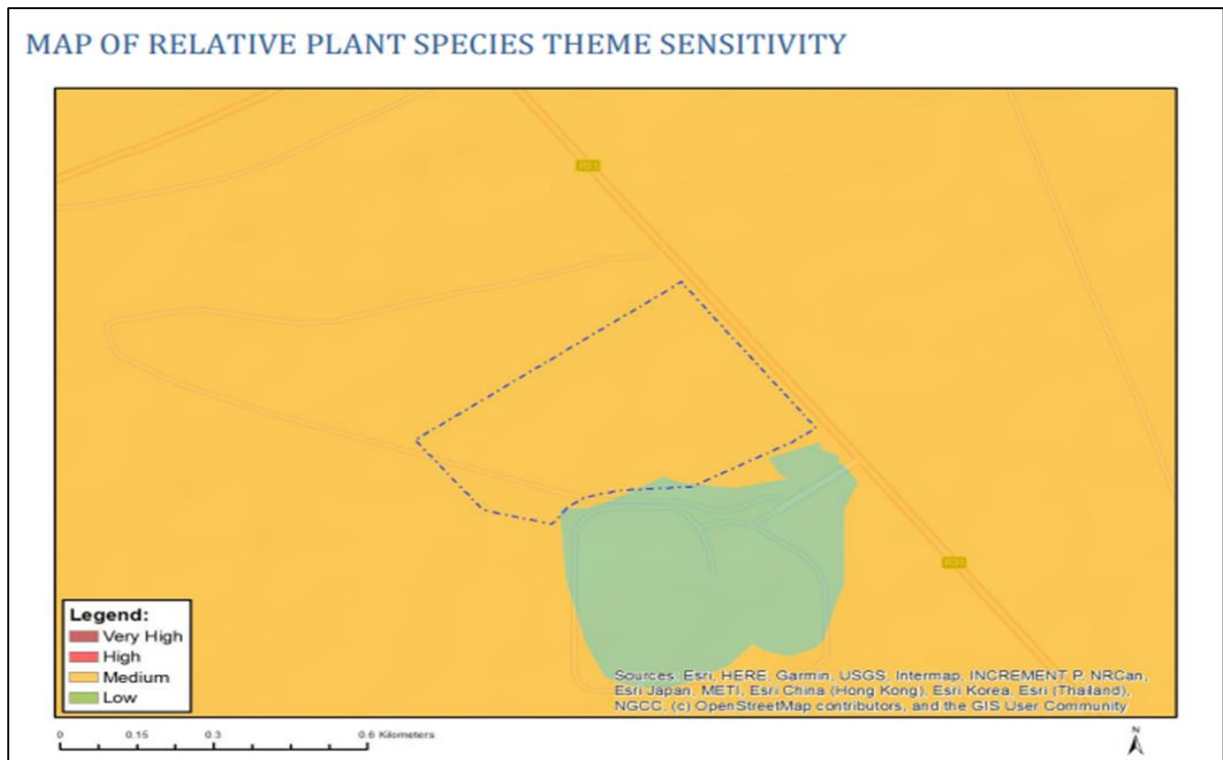
Based on the DFFE Screening Tool Report, the proposed development site has been assigned a low sensitivity rating for the aquatic biodiversity theme as it is situated away from an aquatic Critical Biodiversity Area (CBA). **Therefore, the EAP has deemed it unnecessary to include an aquatic biodiversity impact assessment for the proposed development.**

6. SOCIO-ECONOMIC THEME SENSITIVITY

6.1. MOTIVATION FOR EXCLUSION:

It contributes to the local economic spending investment and expansion of South Africa's nursing education. All of which contribute to the socio-economic sphere. **For the reasons mentioned above, the EAP deems it unnecessary to exclude a socio-economic impact assessment.**

7. PLANT SPECIES THEME SENSITIVITY



Very High sensitivity	High sensitivity	Medium sensitivity	Low sensitivity
		X	

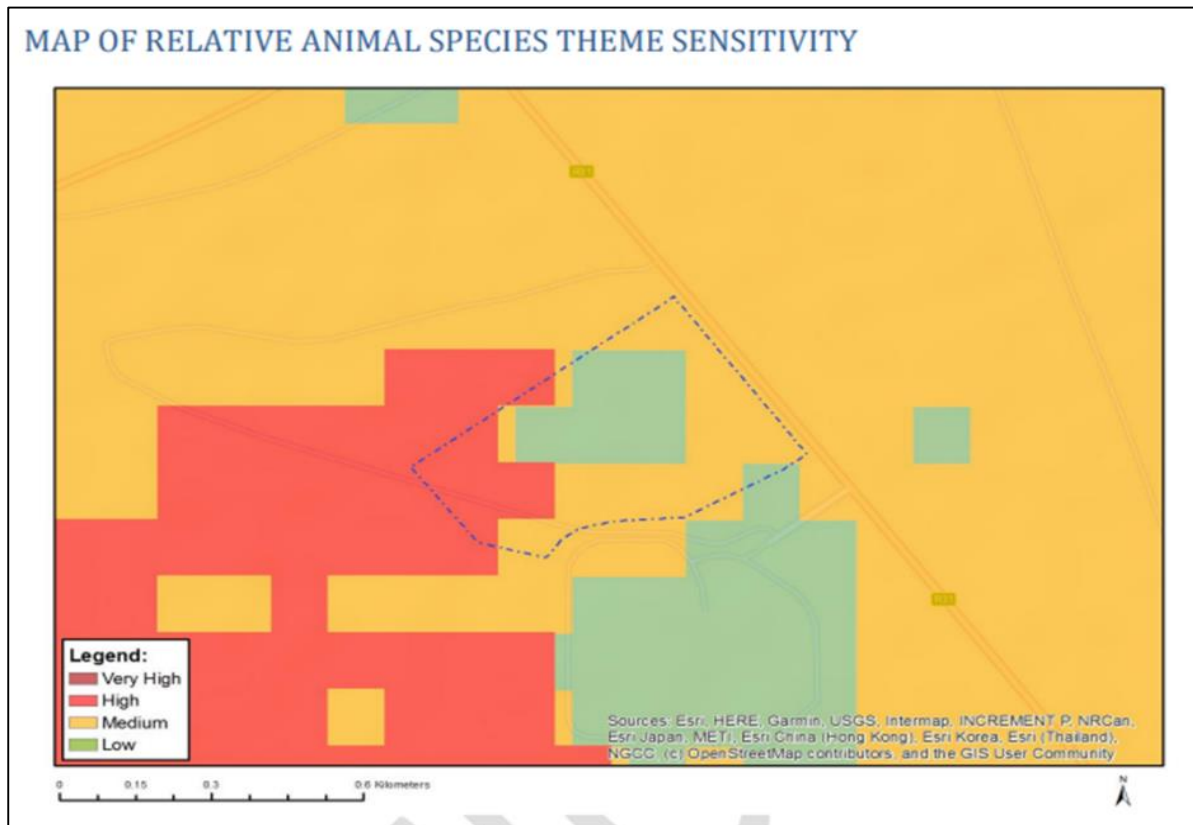
Sensitivity Features:

Sensitivity	Feature(s)
Low	Low Sensitivity
Medium	Sensitive species 257

7.1. MOTIVATION FOR EXCLUSION:

A terrestrial ecological assessment was already conducted and included in the BAR (Appendix D).

8. MAP OF RELATIVE ANIMAL SPECIES THEME SENSITIVITY



Very High sensitivity	High sensitivity	Medium sensitivity	Low sensitivity
	X		

Sensitivity Features:

Sensitivity	Feature(s)
High	Aves-Sagittarius serpentarius
Low	Low sensitivity
Medium	Aves-Neotis ludwigii

8.1. MOTIVATION FOR EXCLUSION:

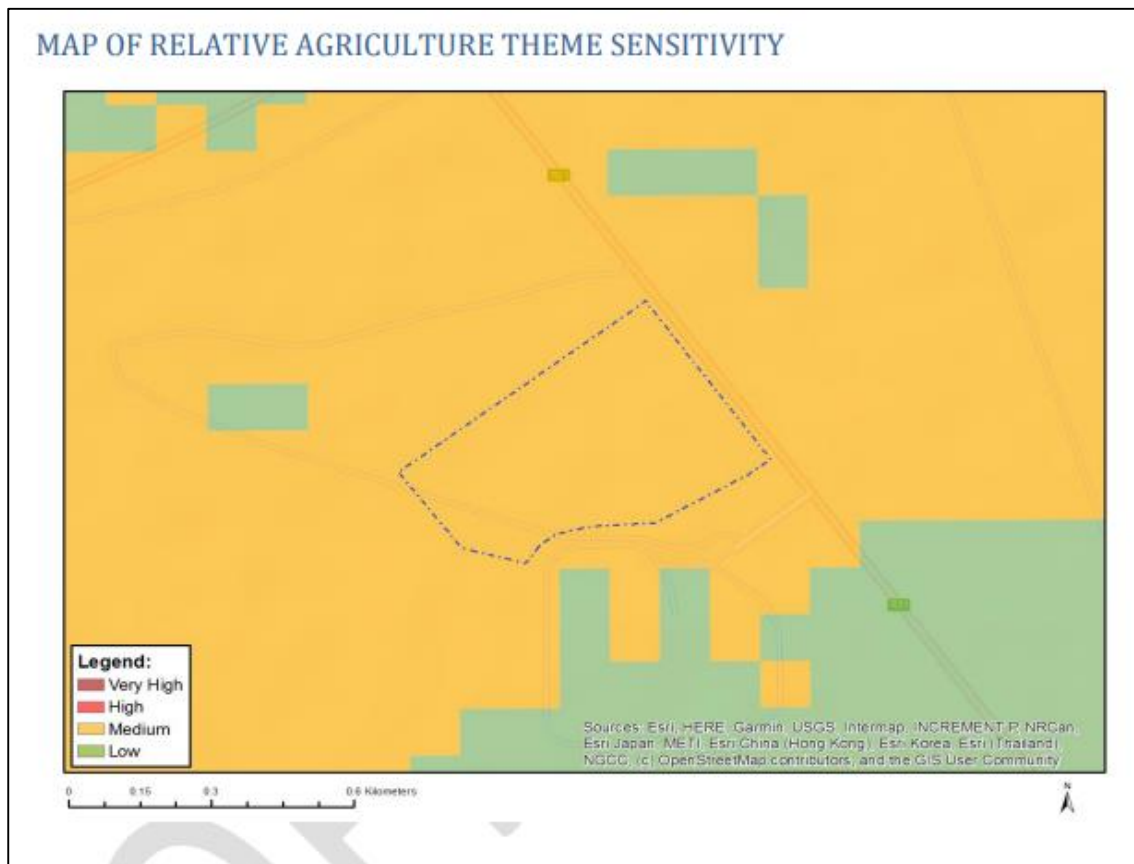
Based on the DFFE Screening Tool Report, the animal species theme was assigned a high sensitivity due to the possible occurrence of two bird species. The site's natural vegetation is severely degraded due to the current construction of the first phase of student accommodation. It is very unlikely for any of the species identified from the screening tool report to occur on-site. During the terrestrial ecology study, the specialist did not encounter any of the above-mentioned species (**Appendix D**). **For the reasons mentioned above the EAP deems it unnecessary to include an animal species impact assessment.**

9. AVIAN THEME SENSITIVITY

9.1. MOTIVATION FOR EXCLUSION:

Based on the DFFE Screening Tool Report, the site's natural vegetation is severely degraded due to the current construction of the first phase of student accommodation, it is unlikely for any of the avian species identified from the screening tool report to occur on-site. This information suggests that the proposed development site may have a low ecological value and may not require an avian impact assessment. **For the reasons mentioned above, the EAP deems it unnecessary to include an avian impact assessment.**

10. MAP OF RELATIVE AGRICULTURE THEME SENSITIVITY



Very sensitivity	High	High sensitivity	Medium sensitivity	Low sensitivity
			X	

Sensitivity features:

Sensitivity	Feature(s)
Medium	Land capability;06. Low-Moderate/07. Low-Moderate/08. Moderate

10.1 MOTIVATION FOR EXCLUSION:

Establishing a nursing college and student accommodation in an industrial/institutional zone could complement the already developed facility which is the Kimberley mental health hospital. It could help with workforce development, economic development, and community development. The benefits associated with the nursing college and student accommodation, which is complimentary to the existing land use is considered higher compared to the demolishing of the Phase 1 development and replacing the land use for agricultural use. **For the reasons mentioned above the EAP deems it unnecessary to include an agricultural impact assessment.**