

**SCREENING REPORT FOR AN ENVIRONMENTAL AUTHORIZATION AS
REQUIRED BY THE 2014 EIA REGULATIONS – PROPOSED DEVELOPMENT
FOOTPRINT ENVIRONMENTAL SENSITIVITY**

EIA Reference number: EIA ref to be allocated

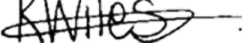
Project name: Ukuwela Nature Reserve

Project title: Ukuwela Donor House Development

Date screening report generated: 14/01/2022 10:56:15

Applicant: Wild Tomorrow Fund

Compiler: K Wiles

Compiler signature: 
.....

Application Category: Transformation of land | Indigenous vegetation

Table of Contents

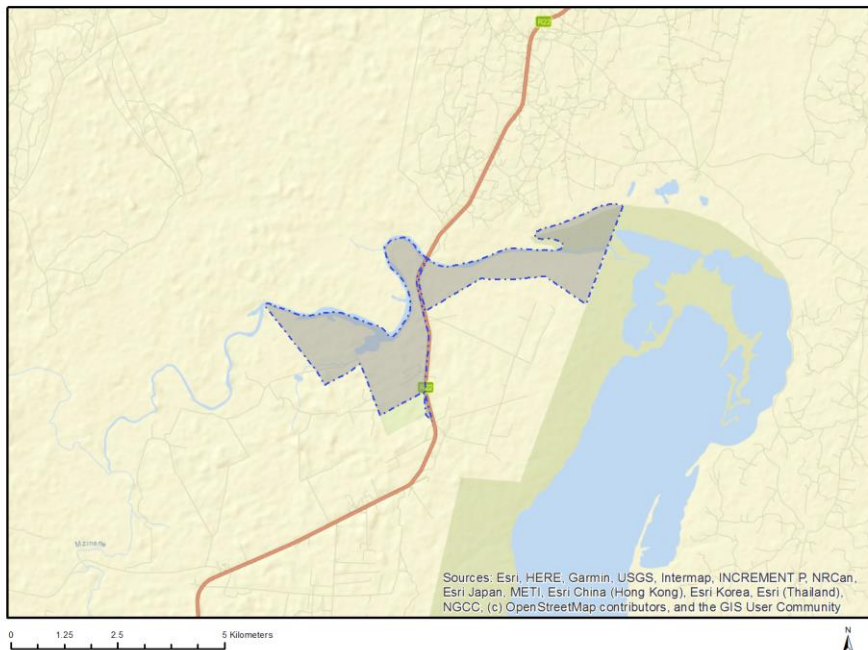
Proposed Project Location	3
Orientation map 1: General location	3
Map of proposed site and relevant area(s)	4
Cadastral details of the proposed site	4
Wind and Solar developments with an approved Environmental Authorisation or applications under consideration within 30 km of the proposed area	8
Environmental Management Frameworks relevant to the application	8
Environmental screening results and assessment outcomes	9
Relevant development incentives, restrictions, exclusions or prohibitions	9
Map indicating proposed development footprint within applicable development incentive, restriction, exclusion or prohibition zones	10
Proposed Development Area Environmental Sensitivity	10
Specialist assessments identified	11
Results of the environmental sensitivity of the proposed area	13
MAP OF RELATIVE AGRICULTURE THEME SENSITIVITY	13
MAP OF RELATIVE ANIMAL SPECIES THEME SENSITIVITY	14
MAP OF RELATIVE AQUATIC BIODIVERSITY THEME SENSITIVITY	15
MAP OF RELATIVE ARCHAEOLOGICAL AND CULTURAL HERITAGE THEME SENSITIVITY	16
MAP OF RELATIVE CIVIL AVIATION THEME SENSITIVITY	17
MAP OF RELATIVE DEFENCE THEME SENSITIVITY	18
MAP OF RELATIVE PALEONTOLOGY THEME SENSITIVITY	19
MAP OF RELATIVE PLANT SPECIES THEME SENSITIVITY	20
MAP OF RELATIVE TERRESTRIAL BIODIVERSITY THEME SENSITIVITY	21

Proposed Project Location

Orientation map 1: General location



Map of proposed site and relevant area(s)



Cadastral details of the proposed site

Property details:

No	Farm Name	Farm/ Erf No	Portion	Latitude	Longitude	Property Type
1	CLOETE	13350	0	27°53'8.64S	32°22'32.49E	Farm
2	LOT H 115	13180	0	27°54'2.81S	32°20'37.54E	Farm
3	LOT H 115	13180	23	27°53'18.17S	32°20'40.55E	Farm Portion
4	CLOETE	13350	13	27°53'29.49S	32°21'26.43E	Farm Portion
5	LOT H 115	13180	23	27°53'15.33S	32°20'35.77E	Farm Portion
6	CLOETE	13350	12	27°53'41.49S	32°21'29.73E	Farm Portion
7	CLOETE	13350	14	27°53'18.88S	32°21'21.95E	Farm Portion
8	CLOETE	13350	0	27°52'36.76S	32°21'40.88E	Farm Portion
9	CLOETE	13350	0	27°52'16.41S	32°22'55.42E	Farm Portion

Development footprint¹ vertices:

Footprint	Latitude	Longitude
1	27°53'2.17S	32°21'51.85E
1	27°53'3.62S	32°21'51.84E
1	27°53'32.01S	32°21'49.19E
1	27°53'36.04S	32°21'48.98E
1	27°53'39.31S	32°21'49.16E
1	27°53'41.91S	32°21'49.53E
1	27°53'46.22S	32°21'50.56E

¹ “development footprint”, means the area within the site on which the development will take place and includes all ancillary developments for example roads, power lines, boundary walls, paving etc. which require vegetation clearance or which will be disturbed and for which the application has been submitted.

1	27°53'59.68S	32°21'54.67E
1	27°53'55.04S	32°21'49.68E
1	27°53'46.93S	32°21'48.65E
1	27°53'39.8S	32°21'47.73E
1	27°53'55.9S	32°21'15.13E
1	27°53'44.28S	32°21'10.06E
1	27°53'33.42S	32°21'5.34E
1	27°53'21.24S	32°21'0.04E
1	27°53'27.38S	32°20'50.75E
1	27°53'31.67S	32°20'41.59E
1	27°53'35.27S	32°20'32.91E
1	27°53'27.03S	32°20'27.75E
1	27°52'43.04S	32°19'48.32E
1	27°52'42.13S	32°19'47.5E
1	27°52'41.23S	32°19'48.27E
1	27°52'40.75S	32°19'49.39E
1	27°52'40.66S	32°19'50.84E
1	27°52'41.29S	32°19'52.7E
1	27°52'41.38S	32°19'52.99E
1	27°52'42.7S	32°19'56.04E
1	27°52'43.67S	32°19'59.57E
1	27°52'45.33S	32°20'5.12E
1	27°52'47.12S	32°20'10.19E
1	27°52'48.18S	32°20'14.21E
1	27°52'48.7S	32°20'17.97E
1	27°52'48.7S	32°20'21.41E
1	27°52'48.27S	32°20'24.49E
1	27°52'47.76S	32°20'27.74E
1	27°52'46.91S	32°20'32.79E
1	27°52'46.31S	32°20'36.74E
1	27°52'46.18S	32°20'39.85E
1	27°52'46.42S	32°20'42.53E
1	27°52'46.69S	32°20'44.23E
1	27°52'46.77S	32°20'44.64E
1	27°52'46.83S	32°20'45.07E
1	27°52'46.93S	32°20'45.49E
1	27°52'48.37S	32°20'50.23E
1	27°52'48.97S	32°20'51.89E
1	27°52'49.32S	32°20'53.22E
1	27°52'49.93S	32°20'55.06E
1	27°52'50.48S	32°20'56.63E
1	27°52'51.08S	32°20'58.31E
1	27°52'52.97S	32°21'3.18E
1	27°52'53.59S	32°21'5.45E
1	27°52'54.23S	32°21'7.48E
1	27°52'54.58S	32°21'8.73E
1	27°52'54.99S	32°21'10.86E
1	27°52'55.38S	32°21'12.38E
1	27°52'58.26S	32°21'18.08E
1	27°52'59.23S	32°21'18.99E
1	27°52'59.94S	32°21'19.81E
1	27°53'1.16S	32°21'20.99E
1	27°53'2.16S	32°21'21.68E
1	27°53'2.54S	32°21'25.33E
1	27°53'1.94S	32°21'26.22E
1	27°53'0.75S	32°21'27.56E
1	27°53'0.64S	32°21'27.69E
1	27°52'59.42S	32°21'28.64E
1	27°52'59S	32°21'29.03E
1	27°52'54.03S	32°21'32.6E

1	27°52'52.72S	32°21'33.6E
1	27°52'51.66S	32°21'34.59E
1	27°52'50.64S	32°21'35.26E
1	27°52'49.75S	32°21'35.93E
1	27°52'44.66S	32°21'37.84E
1	27°52'44.04S	32°21'37.84E
1	27°52'42.8S	32°21'37.81E
1	27°52'41.93S	32°21'37.84E
1	27°52'41.19S	32°21'37.76E
1	27°52'40.16S	32°21'37.64E
1	27°52'34.5S	32°21'36.87E
1	27°52'33.63S	32°21'36.7E
1	27°52'33.58S	32°21'36.59E
1	27°52'32.88S	32°21'36.39E
1	27°52'31.39S	32°21'35.71E
1	27°52'25.4S	32°21'32.57E
1	27°52'23.89S	32°21'31.11E
1	27°52'21.93S	32°21'29.62E
1	27°52'20.8S	32°21'28.48E
1	27°52'19.49S	32°21'26.88E
1	27°52'18.62S	32°21'25.74E
1	27°52'16.14S	32°21'23.13E
1	27°52'14.64S	32°21'22.19E
1	27°52'12.98S	32°21'21.35E
1	27°52'11.49S	32°21'20.77E
1	27°52'9.45S	32°21'19.93E
1	27°52'8.33S	32°21'19.52E
1	27°52'2.83S	32°21'18.23E
1	27°52'2.45S	32°21'18.56E
1	27°52'1.97S	32°21'19E
1	27°52'1.12S	32°21'19.99E
1	27°51'59.7S	32°21'21.5E
1	27°51'57.83S	32°21'23.3E
1	27°51'57.67S	32°21'23.49E
1	27°51'56.82S	32°21'27.95E
1	27°51'56.52S	32°21'29.73E
1	27°51'56.35S	32°21'32.01E
1	27°51'56.2S	32°21'33.26E
1	27°51'56.21S	32°21'33.49E
1	27°51'56.84S	32°21'34.92E
1	27°51'59.68S	32°21'39.37E
1	27°52'1.06S	32°21'40.97E
1	27°52'1.89S	32°21'41.61E
1	27°52'2.35S	32°21'41.78E
1	27°52'4.27S	32°21'43.09E
1	27°52'5.15S	32°21'44.01E
1	27°52'7.87S	32°21'47.19E
1	27°52'8S	32°21'47.43E
1	27°52'9.01S	32°21'48.62E
1	27°52'9.56S	32°21'49.58E
1	27°52'9.86S	32°21'50.01E
1	27°52'14.96S	32°21'46.91E
1	27°52'18.07S	32°21'45E
1	27°52'19.65S	32°21'44.19E
1	27°52'22.69S	32°21'43.17E
1	27°52'25.8S	32°21'42.83E
1	27°52'28.92S	32°21'43.16E
1	27°52'29.73S	32°21'43.36E
1	27°52'59.6S	32°21'51.42E
1	27°53'0.91S	32°21'51.84E

1	27°53'2.17S	32°21'51.85E
2	27°51'35.04S	32°24'18.79E
2	27°52'40.98S	32°23'51.12E
2	27°52'32.44S	32°23'37.04E
2	27°52'22.35S	32°23'20.43E
2	27°52'24.29S	32°23'0.32E
2	27°52'23.98S	32°22'36.83E
2	27°52'23.42S	32°22'31.91E
2	27°52'45.81S	32°21'49.19E
2	27°52'29.53S	32°21'44.78E
2	27°52'27.54S	32°21'44.38E
2	27°52'23.77S	32°21'44.45E
2	27°52'22.47S	32°21'44.72E
2	27°52'21.37S	32°21'45.04E
2	27°52'18.46S	32°21'46.38E
2	27°52'10.64S	32°21'51.16E
2	27°52'13.27S	32°21'55.41E
2	27°52'14.12S	32°21'57.21E
2	27°52'14.95S	32°21'59.55E
2	27°52'15.35S	32°22'2.25E
2	27°52'15.76S	32°22'4.22E
2	27°52'15.78S	32°22'5.53E
2	27°52'15.28S	32°22'10.65E
2	27°52'14.9S	32°22'12.93E
2	27°52'14.55S	32°22'14.56E
2	27°52'14.39S	32°22'15.17E
2	27°52'13.8S	32°22'17.49E
2	27°52'13.66S	32°22'18.79E
2	27°52'12.59S	32°22'25.14E
2	27°52'11.98S	32°22'27.32E
2	27°52'11.1S	32°22'30.12E
2	27°52'10.75S	32°22'31.25E
2	27°52'10.25S	32°22'33.16E
2	27°52'9.45S	32°22'35.4E
2	27°52'6.23S	32°22'43.72E
2	27°52'5.49S	32°22'46.52E
2	27°52'4.77S	32°22'48.29E
2	27°52'4.07S	32°22'50.63E
2	27°52'3.56S	32°22'53.28E
2	27°52'3.43S	32°22'55.71E
2	27°52'4.3S	32°23'6.83E
2	27°52'4.46S	32°23'8.96E
2	27°52'4.48S	32°23'10.81E
2	27°52'4.59S	32°23'12.63E
2	27°52'4.79S	32°23'15.09E
2	27°52'4.83S	32°23'17.91E
2	27°52'5.04S	32°23'23.94E
2	27°52'4.92S	32°23'26.68E
2	27°52'4.79S	32°23'29.19E
2	27°52'4.44S	32°23'30.86E
2	27°52'3.84S	32°23'31.95E
2	27°52'3.08S	32°23'33.17E
2	27°52'1.15S	32°23'33.8E
2	27°52'0.6S	32°23'33.64E
2	27°52'0.19S	32°23'33.23E
2	27°51'59.6S	32°23'32.31E
2	27°51'59.05S	32°23'31.21E
2	27°51'58.46S	32°23'30.27E
2	27°51'57.71S	32°23'27.33E
2	27°51'57.36S	32°23'25.85E

2	27°51'57.17S	32°23'24.27E
2	27°51'57.14S	32°23'22.42E
2	27°51'57.25S	32°23'21.02E
2	27°51'57.23S	32°23'19.59E
2	27°51'56.57S	32°23'14.26E
2	27°51'56.44S	32°23'13.79E
2	27°51'56.35S	32°23'13.15E
2	27°51'56.27S	32°23'12.96E
2	27°51'56.13S	32°23'12.6E
2	27°51'55.96S	32°23'12.37E
2	27°51'53.58S	32°23'12.74E
2	27°51'53.33S	32°23'12.89E
2	27°51'52.47S	32°23'13.59E
2	27°51'51.95S	32°23'14.54E
2	27°51'51.19S	32°23'15.94E
2	27°51'50.63S	32°23'17.3E
2	27°51'49.49S	32°23'21.02E
2	27°51'49.15S	32°23'23.12E
2	27°51'48.48S	32°23'25.55E
2	27°51'47.94S	32°23'28.3E
2	27°51'47.67S	32°23'29.04E
2	27°51'47.52S	32°23'29.83E
2	27°51'45.94S	32°23'35.26E
2	27°51'45.19S	32°23'37.17E
2	27°51'44.84S	32°23'38.24E
2	27°51'44.24S	32°23'39.64E
2	27°51'43.6S	32°23'41.27E
2	27°51'42.51S	32°23'43.43E
2	27°51'38.66S	32°23'53.48E
2	27°51'37.78S	32°23'55.5E
2	27°51'36.59S	32°23'58.3E
2	27°51'35.54S	32°24'0.6E
2	27°51'35.08S	32°24'1.94E
2	27°51'34.92S	32°24'3.07E
2	27°51'34.37S	32°24'7.35E
2	27°51'34.02S	32°24'9.36E
2	27°51'33.89S	32°24'11.17E
2	27°51'33.8S	32°24'14.1E
2	27°51'34.5S	32°24'17.46E
2	27°51'35.04S	32°24'18.79E

Wind and Solar developments with an approved Environmental Authorisation or applications under consideration within 30 km of the proposed area

No	EIA Reference No	Classification	Status of application	Distance from proposed area (km)
1	12/12/20/2091/1	Solar PV	Approved	23.7

Environmental Management Frameworks relevant to the application

No intersections with EMF areas found.

Environmental screening results and assessment outcomes

The following sections contain a summary of any development incentives, restrictions, exclusions or prohibitions that apply to the proposed development footprint as well as the most environmental sensitive features on the footprint based on the footprint sensitivity screening results for the application classification that was selected. The application classification selected for this report is:

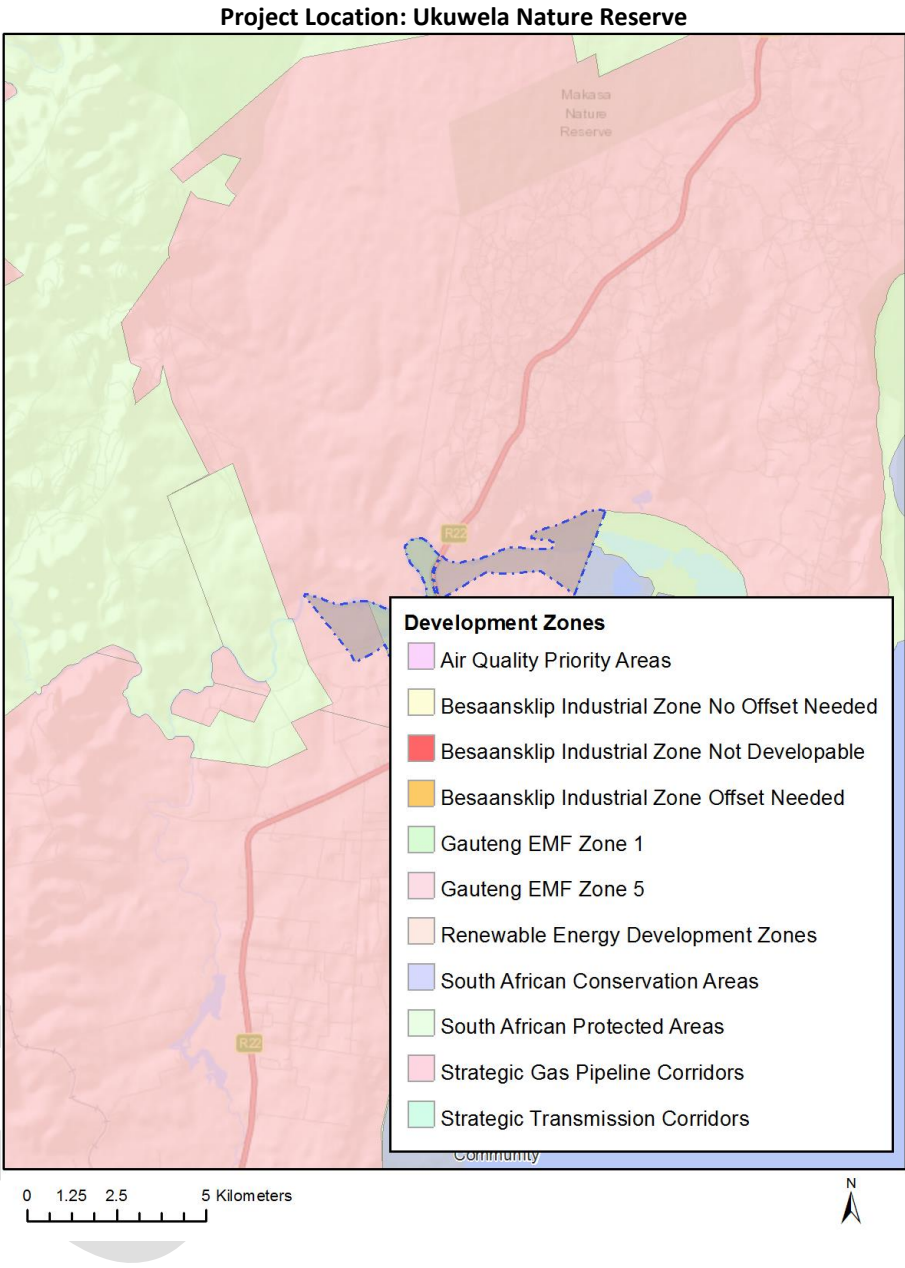
Transformation of land | Indigenous vegetation.

Relevant development incentives, restrictions, exclusions or prohibitions

The following development incentives, restrictions, exclusions or prohibitions and their implications that apply to this footprint are indicated below.

Incentive, restriction or prohibition	Implication
Strategic Transmission Corridor-Expanded Eastern Corridor	https://screening.environment.gov.za/ScreeningDownloads/DevelopmentZones/Combined_EGI.pdf
Strategic Gas Pipeline Corridors -Phase 4: Mozambique (Southern Border) to Richards Bay	https://screening.environment.gov.za/ScreeningDownloads/DevelopmentZones/Combined_GAS.pdf
South African Protected Areas	https://screening.environment.gov.za/ScreeningDownloads/DevelopmentZones/SAPAD_OR_2021_Q3_Metadata.pdf

Map indicating proposed development footprint within applicable development incentive, restriction, exclusion or prohibition zones



Proposed Development Area Environmental Sensitivity

The following summary of the development footprint environmental sensitivities is identified. Only the highest environmental sensitivity is indicated. The footprint environmental sensitivities for the proposed development footprint as identified, are indicative only and must be verified on site by a suitably qualified person before the specialist assessments identified below can be confirmed.

Theme	Very High sensitivity	High sensitivity	Medium sensitivity	Low sensitivity
Agriculture Theme	X			
Animal Species Theme		X		

Aquatic Biodiversity Theme	X			
Archaeological and Cultural Heritage Theme	X			
Civil Aviation Theme		X		
Defence Theme	X			
Paleontology Theme	X			
Plant Species Theme			X	
Terrestrial Biodiversity Theme	X			

Specialist assessments identified

Based on the selected classification, and the environmental sensitivities of the proposed development footprint, the following list of specialist assessments have been identified for inclusion in the assessment report. It is the responsibility of the EAP to confirm this list and to motivate in the assessment report, the reason for not including any of the identified specialist study including the provision of photographic evidence of the footprint situation.

N o	Specialist assessment	Assessment Protocol
1	Landscape/Visual Impact Assessment	https://screening.environment.gov.za/ScreeningDownloads/AssessmentProtocols/Gazetted_General_Requirement_Assessment_Protocols.pdf
2	Archaeological and Cultural Heritage Impact Assessment	https://screening.environment.gov.za/ScreeningDownloads/AssessmentProtocols/Gazetted_General_Requirement_Assessment_Protocols.pdf
3	Palaeontology Impact Assessment	https://screening.environment.gov.za/ScreeningDownloads/AssessmentProtocols/Gazetted_General_Requirement_Assessment_Protocols.pdf
4	Terrestrial Biodiversity Impact Assessment	https://screening.environment.gov.za/ScreeningDownloads/AssessmentProtocols/Gazetted_Terrestrial_Biodiversity_Assessment_Protocols.pdf
5	Aquatic Biodiversity Impact Assessment	https://screening.environment.gov.za/ScreeningDownloads/AssessmentProtocols/Gazetted_Aquatic_Biodiversity_Assessment_Protocols.pdf
6	Socio-Economic Assessment	https://screening.environment.gov.za/ScreeningDownloads/AssessmentProtocols/Gazetted_General_Requirement_Assessment_Protocols.pdf
7	Plant Species	https://screening.environment.gov.za/ScreeningDownloads/AssessmentProtocols/Gazetted_Plant_Species_Assessment_Protocols.pdf

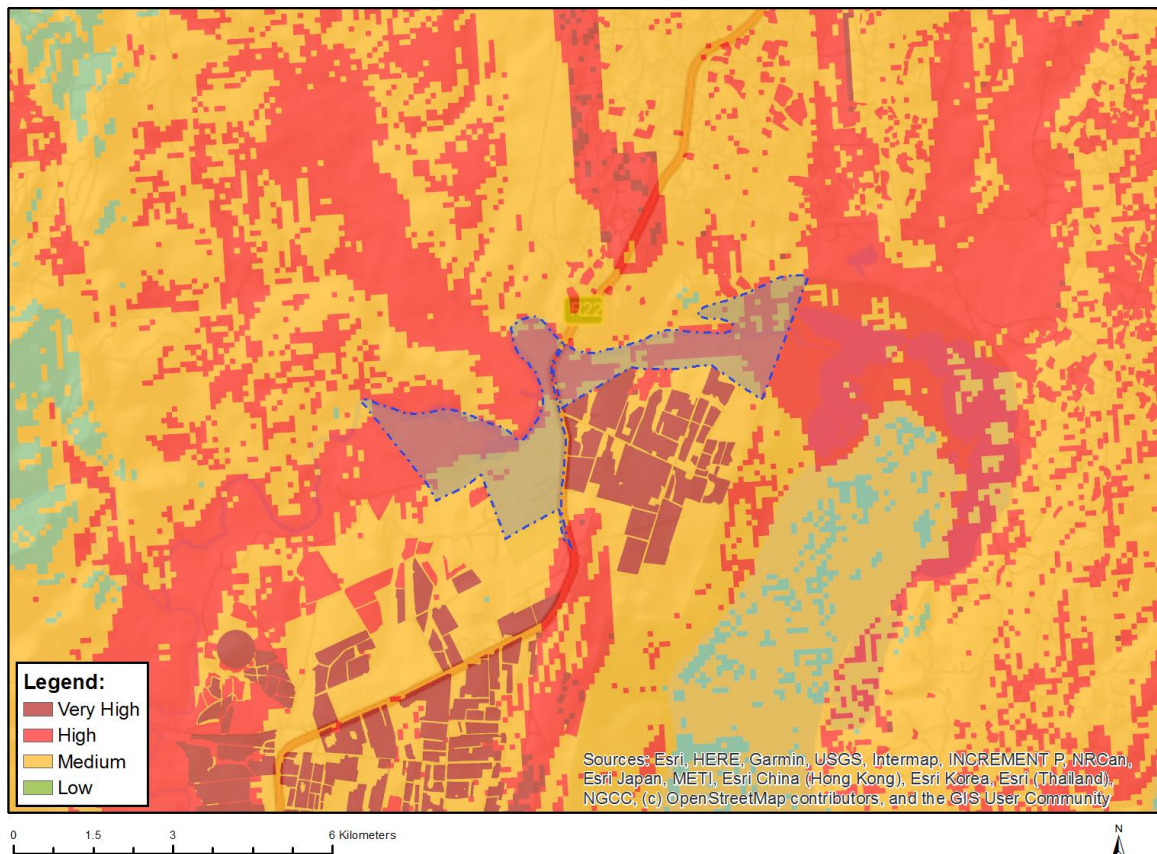
	Assessment	/Gazetted Plant Species Assessment Protocols.pdf
8	Animal Species Assessment	https://screening.environment.gov.za/ScreeningDownloads/AssessmentProtocols/Gazetted Animal Species Assessment Protocols.pdf

OFFICIAL

Results of the environmental sensitivity of the proposed area.

The following section represents the results of the screening for environmental sensitivity of the proposed footprint for relevant environmental themes associated with the project classification. It is the duty of the EAP to ensure that the environmental themes provided by the screening tool are comprehensive and complete for the project. Refer to the disclaimer.

MAP OF RELATIVE AGRICULTURE THEME SENSITIVITY

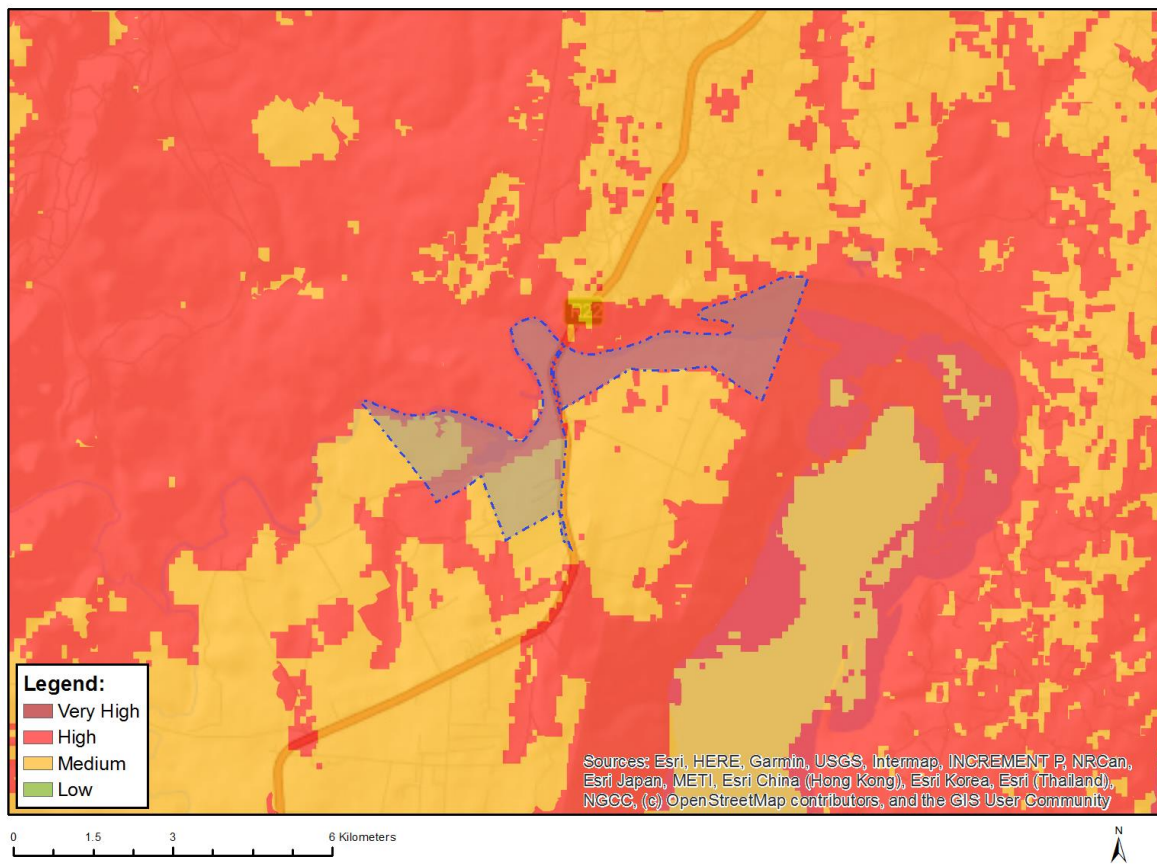


Very High sensitivity	High sensitivity	Medium sensitivity	Low sensitivity
X			

Sensitivity Features:

Sensitivity	Feature(s)
High	Land capability;09. Moderate-High/10. Moderate-High
High	Old Fields;Land capability;06. Low-Moderate/07. Low-Moderate/08. Moderate
High	Subsistence Farming 1;Land capability;06. Low-Moderate/07. Low-Moderate/08. Moderate
Medium	Land capability;06. Low-Moderate/07. Low-Moderate/08. Moderate
Very High	Horticulture / Viticulture;Land capability;06. Low-Moderate/07. Low-Moderate/08. Moderate
Very High	Horticulture / Viticulture;Land capability;09. Moderate-High/10. Moderate-High

MAP OF RELATIVE ANIMAL SPECIES THEME SENSITIVITY



Where only a sensitive plant unique number or sensitive animal unique number is provided in the screening report and an assessment is required, the environmental assessment practitioner (EAP) or specialist is required to email SANBI at eiadatarequests@sanbi.org.za listing all sensitive species with their unique identifiers for which information is required. The name has been withheld as the species may be prone to illegal harvesting and must be protected. SANBI will release the actual species name after the details of the EAP or specialist have been documented.

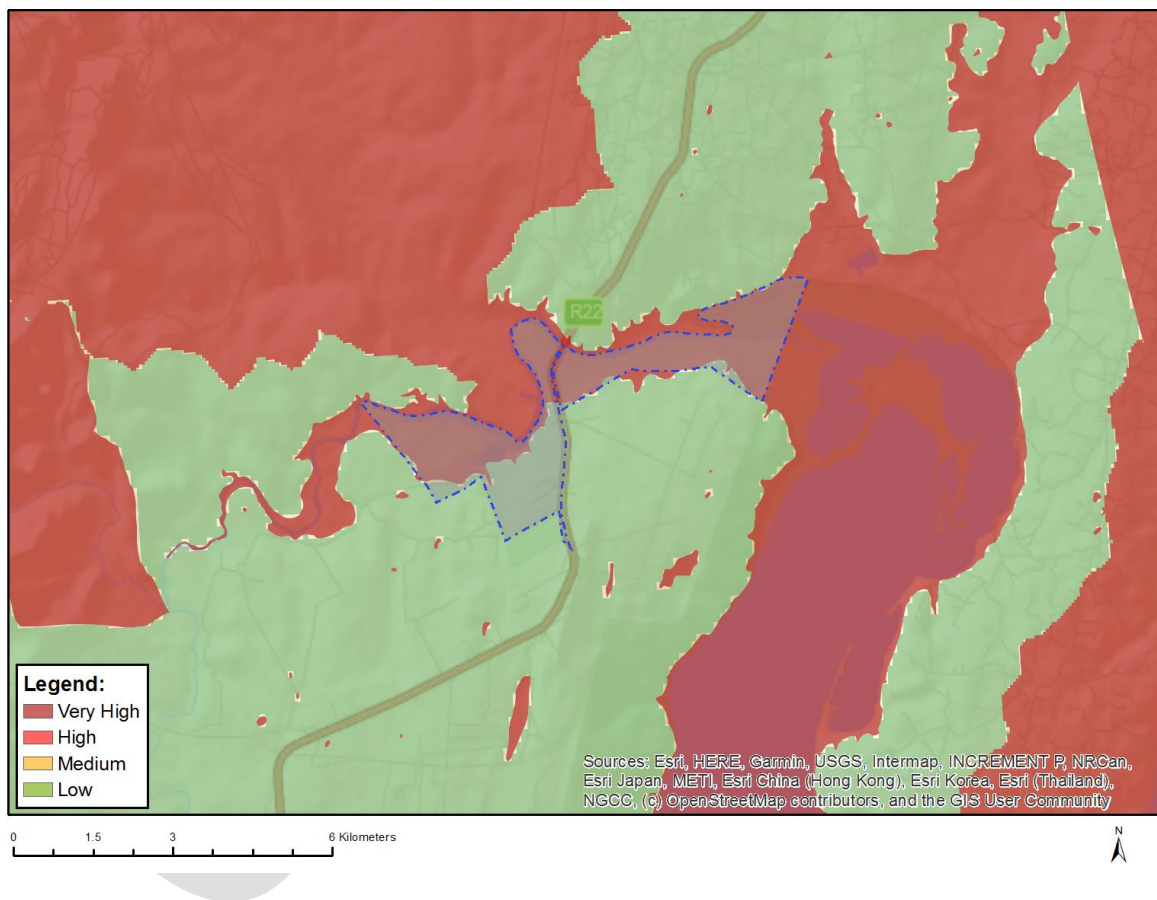
Very High sensitivity	High sensitivity	Medium sensitivity	Low sensitivity
	X		

Sensitivity Features:

Sensitivity	Feature(s)
High	Aves-Terathopius ecaudatus
High	Aves-Circaetus fasciolatus
High	Aves-Smithornis capensis
High	Aves-Circus ranivorus
High	Aves-Nettapus auritus
High	Aves-Cinnyris neergaardi
High	Aves-Ciconia nigra
High	Mammalia-Lycaon pictus
High	Sensitive species 1
High	Reptilia-Pelusios castanoides
Medium	Reptilia-Pelusios castanoides
Medium	Reptilia-Pelusios rhodesianus
Medium	Invertebrate-Arytropteris basalis

Medium	Aves-Circus ranivorus
Medium	Insecta-Deloneura millari millari
Medium	Insecta-Hypolycaena lochmophila
Medium	Insecta-lolaus lulua
Medium	Insecta-Teriomima zuluana
Medium	Mammalia-Acinonyx jubatus
Medium	Mammalia-Crocidura maquassiensis
Medium	Mammalia-Lycaon pictus
Medium	Mammalia-Nesotragus moschatus zuluensis
Medium	Mammalia-Ourebia ourebi ourebi
Medium	Sensitive species 7
Medium	Sensitive species 1
Medium	Reptilia-Kinixys natalensis

MAP OF RELATIVE AQUATIC BIODIVERSITY THEME SENSITIVITY

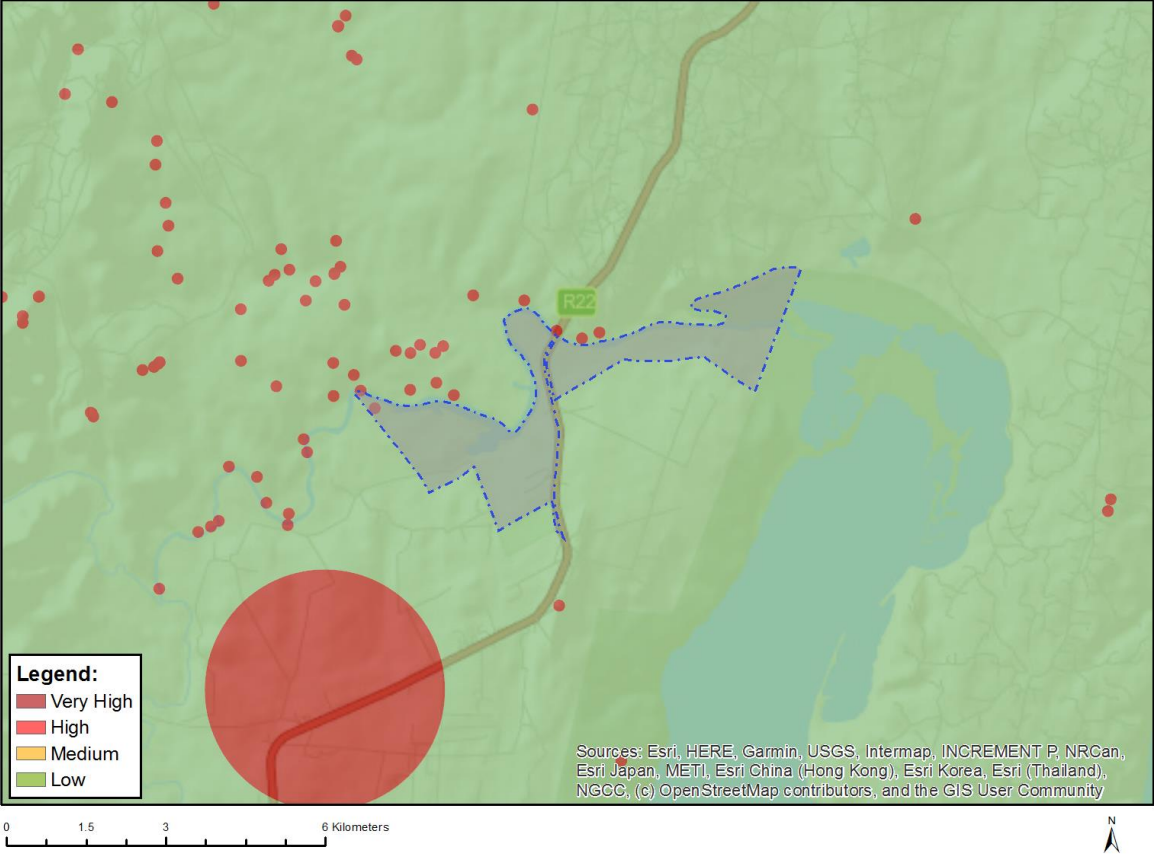


Very High sensitivity	High sensitivity	Medium sensitivity	Low sensitivity
X			

Sensitivity Features:

Sensitivity	Feature(s)
Low	Low sensitivity
Very High	Wetlands and Estuaries
Very High	Freshwater ecosystem priority area quinary catchments

MAP OF RELATIVE ARCHAEOLOGICAL AND CULTURAL HERITAGE THEME SENSITIVITY

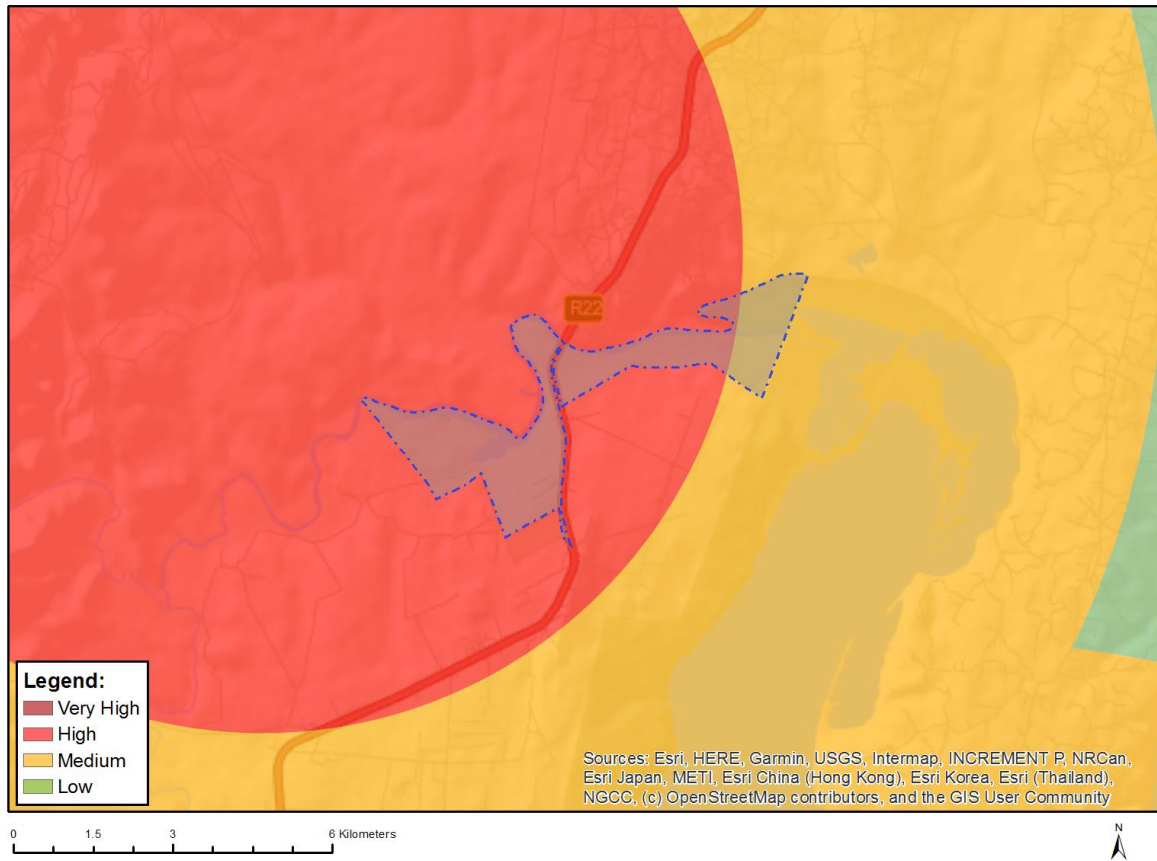


Very High sensitivity	High sensitivity	Medium sensitivity	Low sensitivity
X			

Sensitivity Features:

Sensitivity	Feature(s)
Low	Low sensitivity
Very High	Within 100m of an Ungraded Heritage site

MAP OF RELATIVE CIVIL AVIATION THEME SENSITIVITY

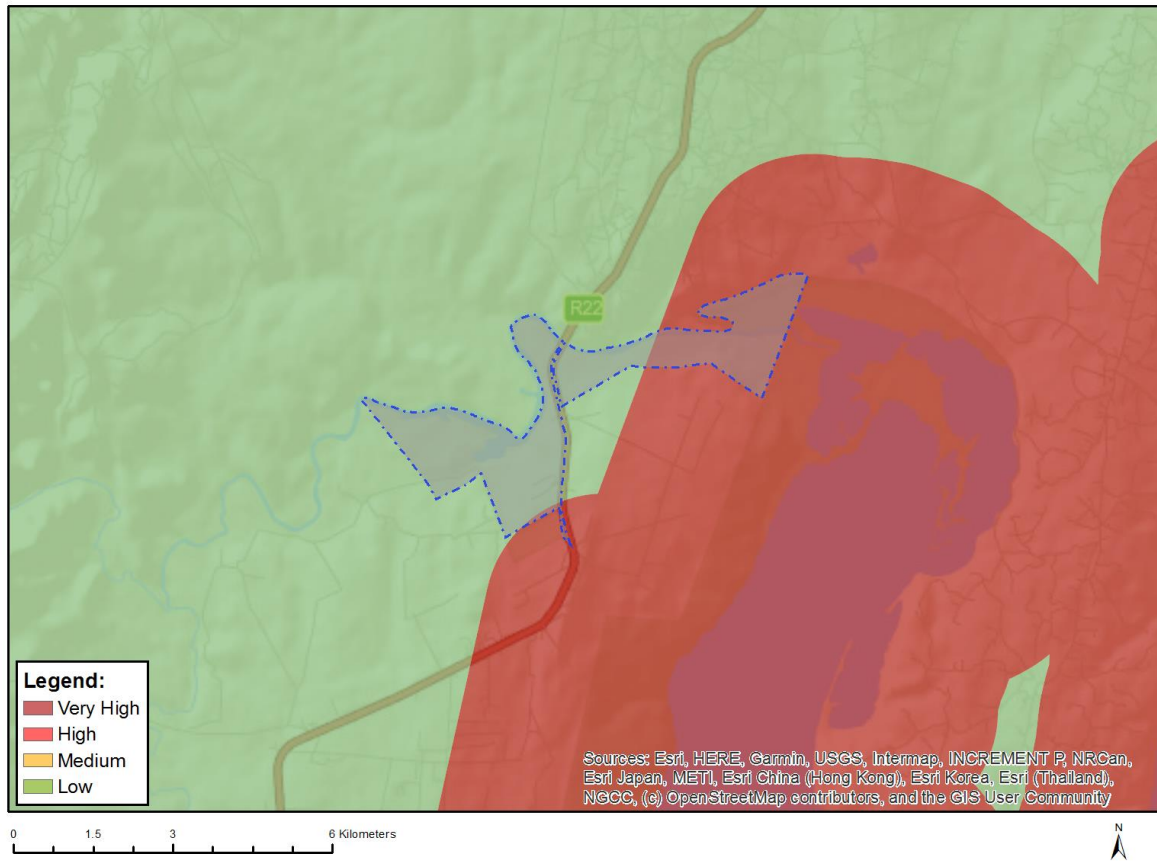


Very High sensitivity	High sensitivity	Medium sensitivity	Low sensitivity
	X		

Sensitivity Features:

Sensitivity	Feature(s)
High	Within 8 km of other civil aviation aerodrome
Medium	Between 8 and 15 km of other civil aviation aerodrome

MAP OF RELATIVE DEFENCE THEME SENSITIVITY

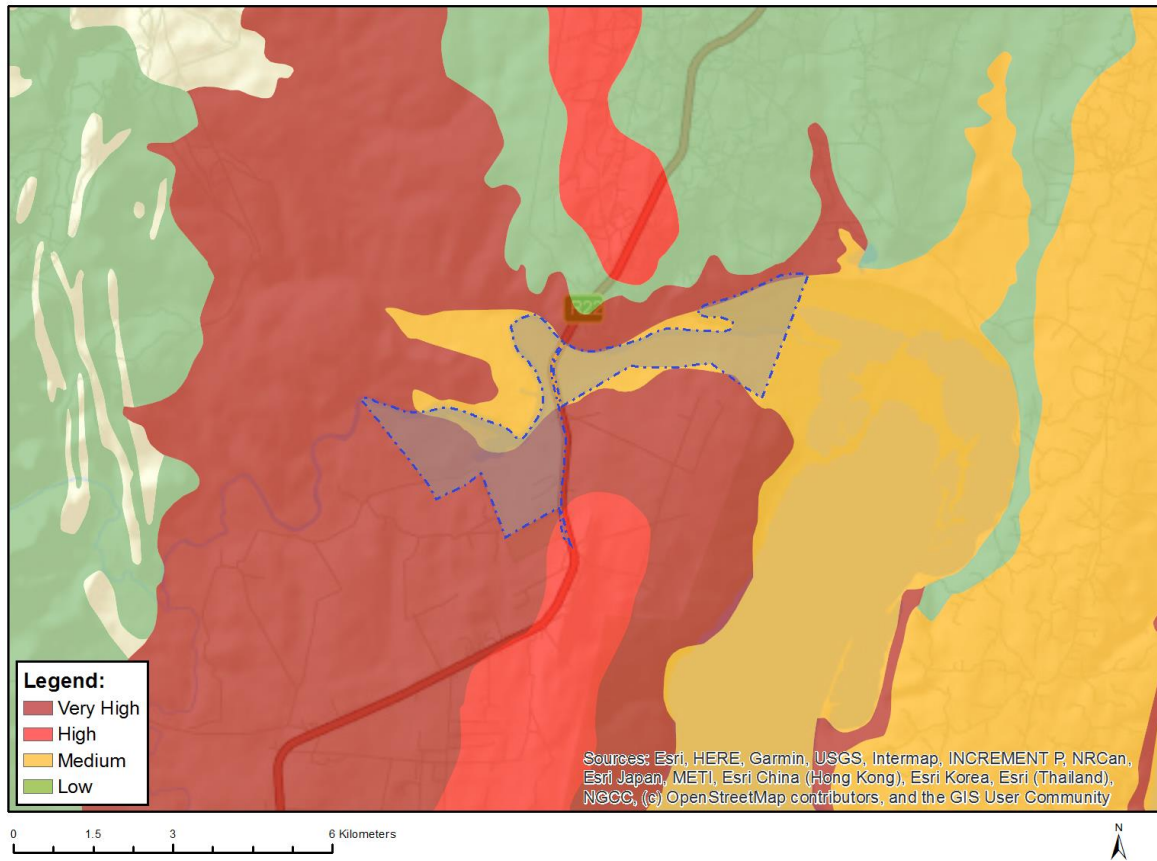


Very High sensitivity	High sensitivity	Medium sensitivity	Low sensitivity
X			

Sensitivity Features:

Sensitivity	Feature(s)
Low	Low Sensitivity
Very High	Military and Defence Site

MAP OF RELATIVE PALEONTOLOGY THEME SENSITIVITY

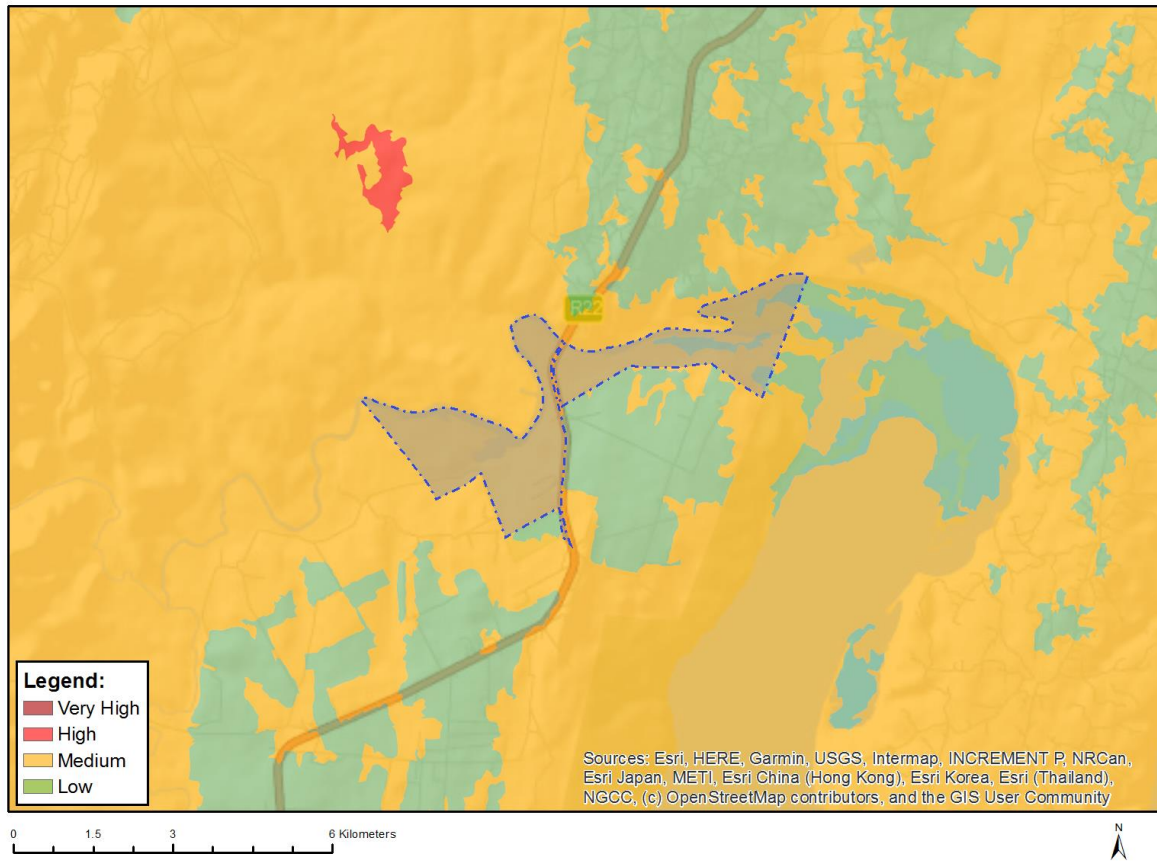


Very High sensitivity	High sensitivity	Medium sensitivity	Low sensitivity
X			

Sensitivity Features:

Sensitivity	Feature(s)
High	Features with a High paleontological sensitivity
Medium	Features with a Medium paleontological sensitivity
Very High	Features with a Very High paleontological sensitivity

MAP OF RELATIVE PLANT SPECIES THEME SENSITIVITY



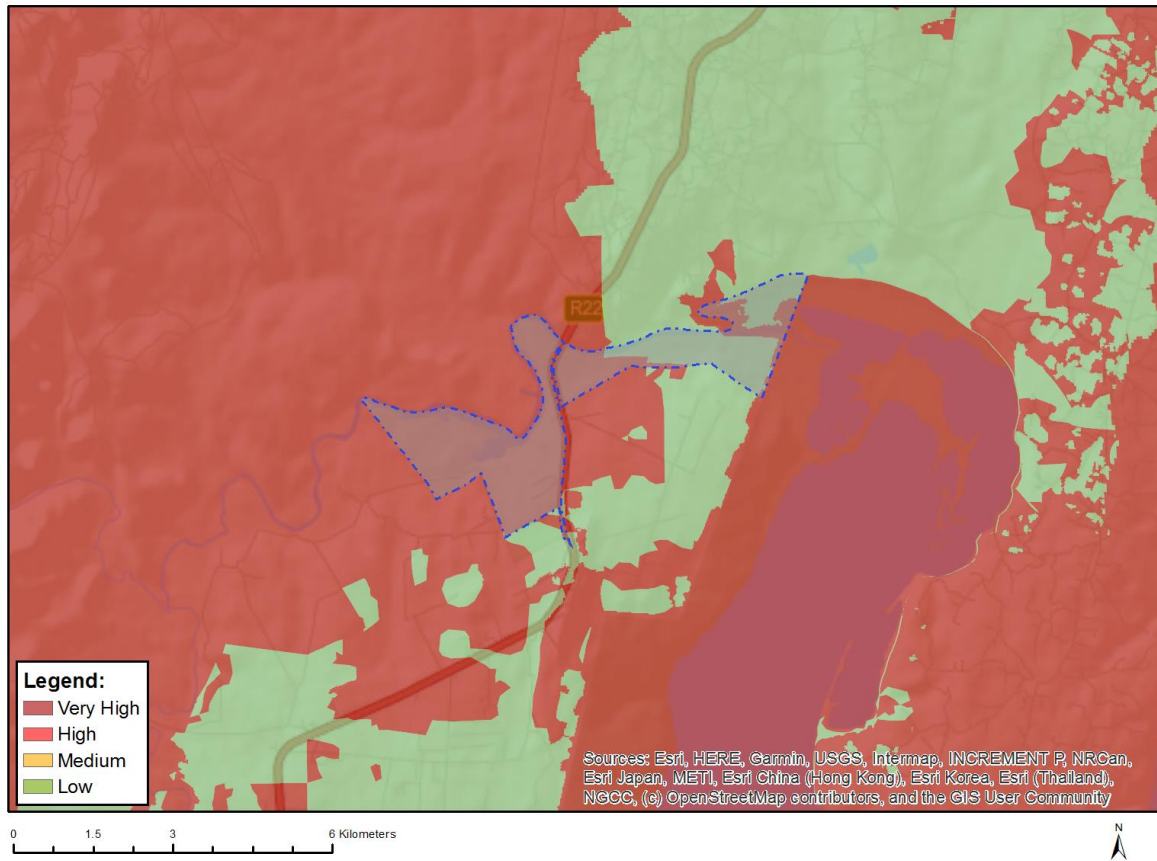
Where only a sensitive plant unique number or sensitive animal unique number is provided in the screening report and an assessment is required, the environmental assessment practitioner (EAP) or specialist is required to email SANBI at eiadatarequests@sanbi.org.za listing all sensitive species with their unique identifiers for which information is required. The name has been withheld as the species may be prone to illegal harvesting and must be protected. SANBI will release the actual species name after the details of the EAP or specialist have been documented.

Very High sensitivity	High sensitivity	Medium sensitivity	Low sensitivity
		X	

Sensitivity Features:

Sensitivity	Feature(s)
Low	Low Sensitivity
Medium	Sensitive species 1252
Medium	Rytigynia celastroides var. australis
Medium	Sensitive species 174
Medium	Sclerochiton apiculatus
Medium	Pristimera delagoensis var. delagoensis
Medium	Searsia kwazuluana
Medium	Sensitive species 738
Medium	Oxygonum dregeanum subsp. streyi
Medium	Pavonia dregei
Medium	Zostera capensis

MAP OF RELATIVE TERRESTRIAL BIODIVERSITY THEME SENSITIVITY



Very High sensitivity	High sensitivity	Medium sensitivity	Low sensitivity
X			

Sensitivity Features:

Sensitivity	Feature(s)
Low	Low Sensitivity
Very High	Critical biodiversity area 1
Very High	Ecological support area
Very High	FEPA Subcatchments
Very High	iSimangaliso Wetland Park
Very High	Greater Ukuwela Nature Reserve
Very High	Vulnerable ecosystem
Very High	Protected Areas Expansion Strategy