

**SCREENING REPORT FOR AN ENVIRONMENTAL AUTHORIZATION AS  
REQUIRED BY THE 2014 EIA REGULATIONS – PROPOSED SITE  
ENVIRONMENTAL SENSITIVITY**

**EIA Reference number:** -

**Project name:** Application for the proposed construction of an agri-industrial facility on Portion 64 of Vaal Koppies No 40, Kenhardt

**Project title:** -

**Date screening report generated:** 03/09/2022 11:58:27

**Applicant:** Carpe Diem Landgoed (Edms) Bpk

**Compiler:** the ECO Balance Planning Co

**Compiler signature:**

.....

**Application Category:** Agriculture\_Forestry\_Fisheries|Agro-Processing

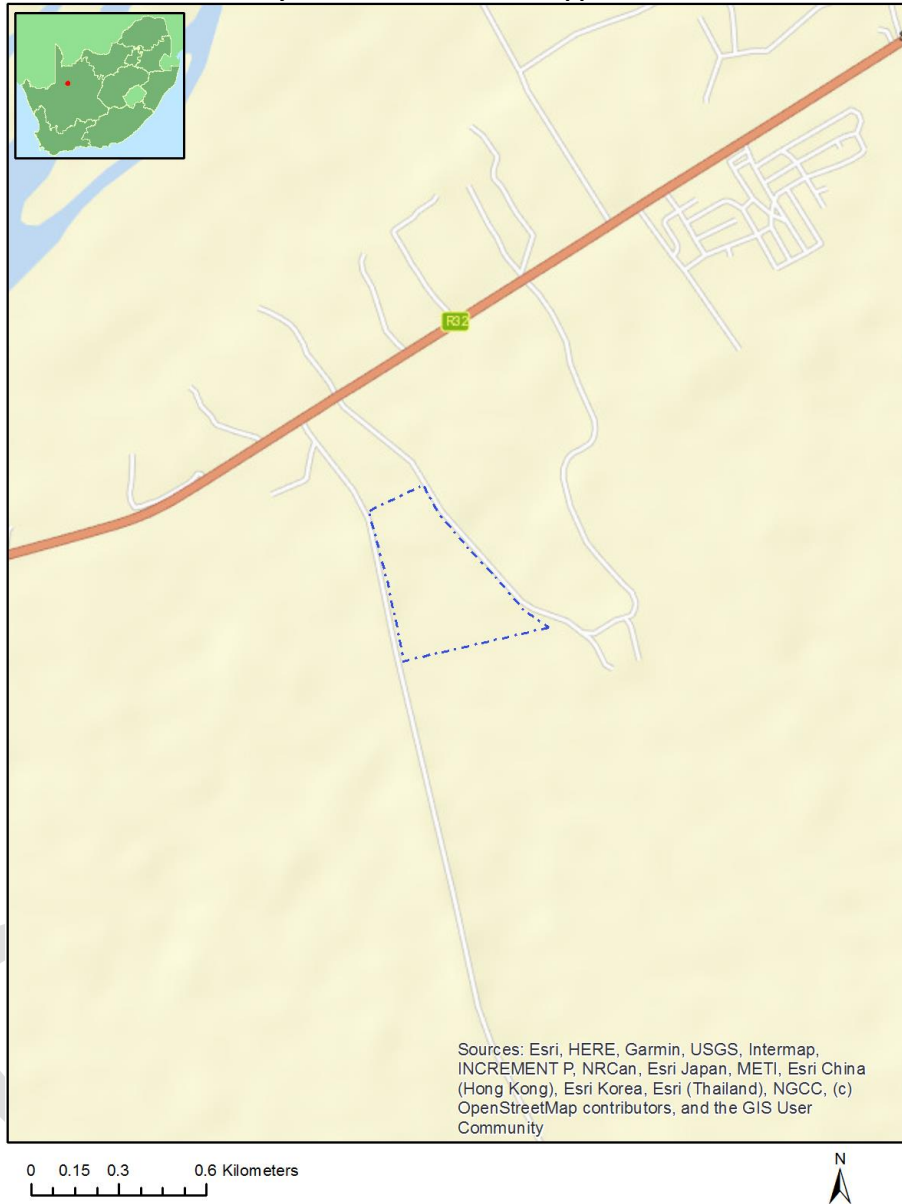
## Table of Contents

Proposed Project Location .....	3
Orientation map 1: General location .....	3
Map of proposed site and relevant area(s) .....	4
Cadastral details of the proposed site .....	4
Wind and Solar developments with an approved Environmental Authorisation or applications under consideration within 30 km of the proposed area .....	4
Environmental Management Frameworks relevant to the application .....	6
Environmental screening results and assessment outcomes .....	6
Relevant development incentives, restrictions, exclusions or prohibitions .....	6
Map indicating proposed development footprint within applicable development incentive, restriction, exclusion or prohibition zones .....	8
Proposed Development Area Environmental Sensitivity .....	8
Specialist assessments identified .....	9
Results of the environmental sensitivity of the proposed area .....	11
MAP OF RELATIVE AGRICULTURE THEME SENSITIVITY .....	11
MAP OF RELATIVE ANIMAL SPECIES THEME SENSITIVITY .....	12
MAP OF RELATIVE AQUATIC BIODIVERSITY THEME SENSITIVITY .....	13
MAP OF RELATIVE ARCHAEOLOGICAL AND CULTURAL HERITAGE THEME SENSITIVITY .....	14
MAP OF RELATIVE CIVIL AVIATION THEME SENSITIVITY .....	15
MAP OF RELATIVE DEFENCE THEME SENSITIVITY .....	16
MAP OF RELATIVE PLANT SPECIES THEME SENSITIVITY .....	17
MAP OF RELATIVE TERRESTRIAL BIODIVERSITY THEME SENSITIVITY .....	18

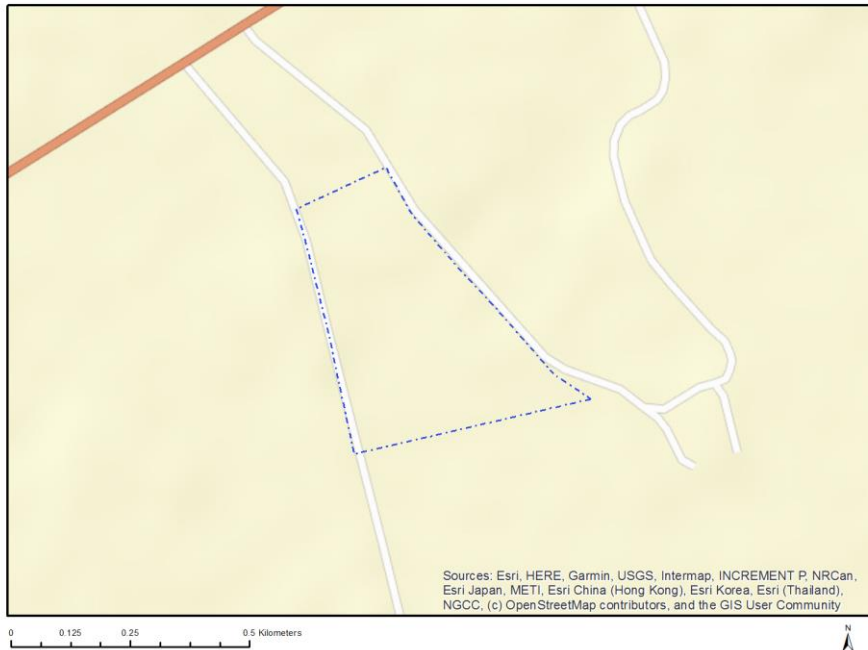
# Proposed Project Location

## Orientation map 1: General location

**General Orientation: Application for the proposed construction of an agri-industrial facility on Portion 64 of Vaal Koppies No 40, Kenhardt**



## Map of proposed site and relevant area(s)



## Cadastral details of the proposed site

Property details:

No	Farm Name	Farm/ Erf No	Portion	Latitude	Longitude	Property Type
1	VAAL KOPPIES	40	0	28°31'17.63S	21°22'21.77E	Farm
2	VAAL KOPPIES	40	64	28°27'39.52S	21°19'35.98E	Farm Portion

Development footprint<sup>1</sup> vertices:  
No development footprint(s) specified.

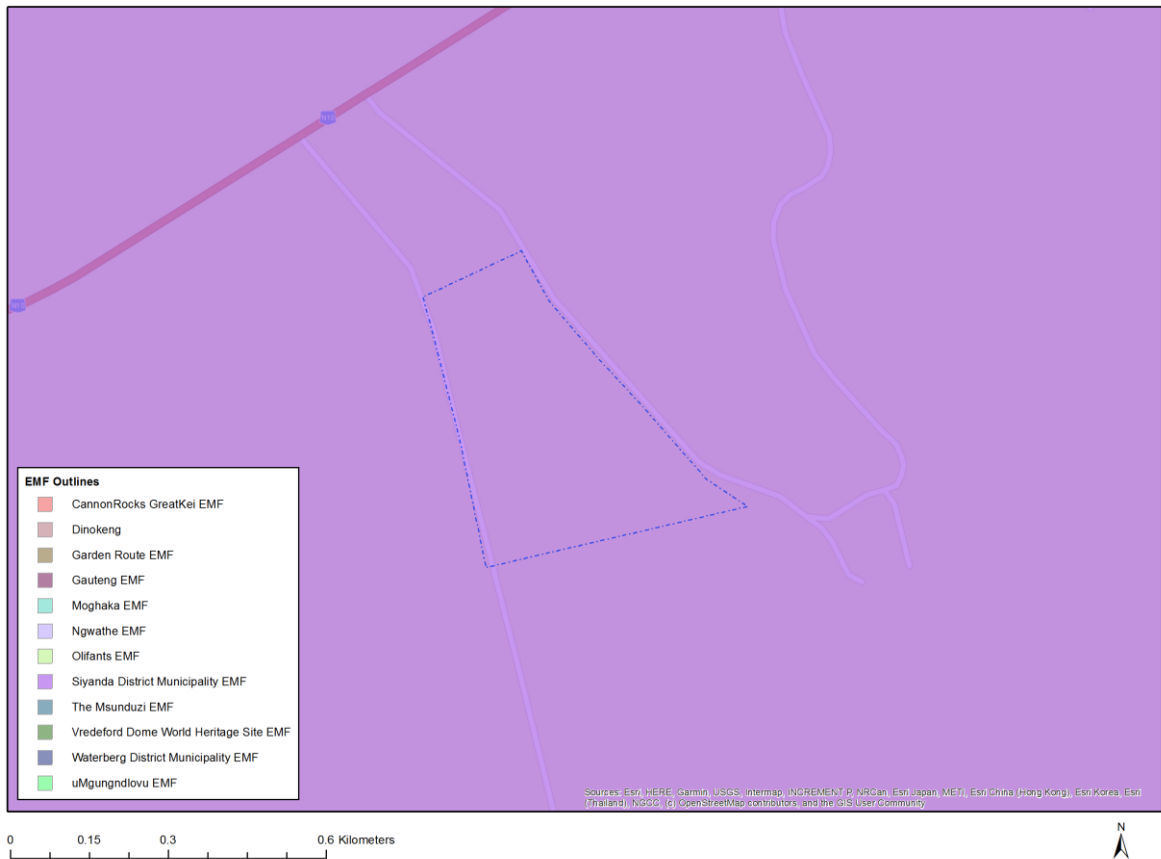
## Wind and Solar developments with an approved Environmental Authorisation or applications under consideration within 30 km of the proposed area

No	EIA Reference No	Classification	Status of application	Distance from proposed area (km)
1	14/12/16/3/3/2/821	Solar PV	Approved	0
2	14/12/16/3/3/2/1107	Solar PV	Approved	11
3	14/12/16/3/3/2/295	Solar CSP	Approved	13.1
4	14/12/16/3/3/2/618	Solar PV	Approved	26.4
5	14/12/16/3/3/2/656	Solar CSP	Approved	27.1
6	14/12/16/3/3/2/1108	Solar PV	Approved	11

<sup>1</sup> "development footprint", means the area within the site on which the development will take place and includes all ancillary developments for example roads, power lines, boundary walls, paving etc. which require vegetation clearance or which will be disturbed and for which the application has been submitted.

7	12/12/20/1831/2	Solar CSP	Approved	27.1
8	14/12/16/3/3/2/619	Solar PV	Approved	26.4
9	14/12/16/3/3/2/297	Solar CSP	Approved	12.1
10	14/12/16/3/3/2/864	Solar CSP	Approved	17.5
11	14/12/16/3/3/2/299	Solar CSP	Approved	17.5
12	14/12/16/3/3/2/291	Solar PV	Approved	12.1
13	14/12/16/3/3/2/298	Solar CSP	Approved	12.1
14	12/12/20/1831	Solar CSP	Approved	27.1
15	14/12/16/3/3/2/294	Solar CSP	Approved	21.6
16	12/12/20/2146	Solar PV	Approved	5.7
17	12/12/20/1831/3	Solar PV	Approved	27.1
18	14/12/16/3/3/2/657	Solar CSP	Approved	27.1
19	14/12/16/3/3/2/1106	Solar PV	Approved	18.5
20	14/12/16/3/3/2/293	Solar CSP	Approved	16.1
21	14/12/16/3/3/2/862	Solar CSP	Approved	12.1
22	14/12/16/3/3/2/905	Solar CSP	Approved	24.1
23	14/12/16/3/3/1/2231	Solar PV	Approved	29.5
24	14/12/16/3/3/2/866	Solar CSP	Approved	12.1
25	14/12/16/3/3/2/296	Solar CSP	Approved	12.1
26	14/12/16/3/3/2/1105	Solar PV	Approved	18.5
27	12/12/20/1831/1	Solar CSP	Approved	27.1
28	12/12/20/2056	Solar CSP	Approved	8.6
29	14/12/16/3/3/2/289	Solar PV	Approved	12.1
30	14/12/16/3/3/2/290	Solar PV	Approved	12.1
31	12/12/20/2169	Solar PV	Approved	5.2
32	14/12/16/3/3/2/614	Solar PV	Approved	26.7
33	12/12/20/777	Solar CSP	Approved	22.9
34	14/12/16/3/3/2/292	Solar PV	Approved	12.1
35	14/12/16/3/3/1/2111	Solar PV	Approved	26.1
36	14/12/16/3/3/1/2075	Solar PV	Approved	24.9
37	14/12/16/3/3/2/904	Solar CSP	Approved	24.1

## Environmental Management Frameworks relevant to the application



Environmental Management Framework	LINK
Siyanda District Municipality EMF	<a href="https://screening.environment.gov.za/ScreeningDownloads/EMF/SIYANDA_EMF_REPORT_2008.doc">https://screening.environment.gov.za/ScreeningDownloads/EMF/SIYANDA_EMF_REPORT_2008.doc</a>

## Environmental screening results and assessment outcomes

The following sections contain a summary of any development incentives, restrictions, exclusions or prohibitions that apply to the proposed development site as well as the most environmental sensitive features on the site based on the site sensitivity screening results for the application classification that was selected. The application classification selected for this report is:

**Agriculture\_Forestry\_Fisheries|Agro-Processing.**

### Relevant development incentives, restrictions, exclusions or prohibitions

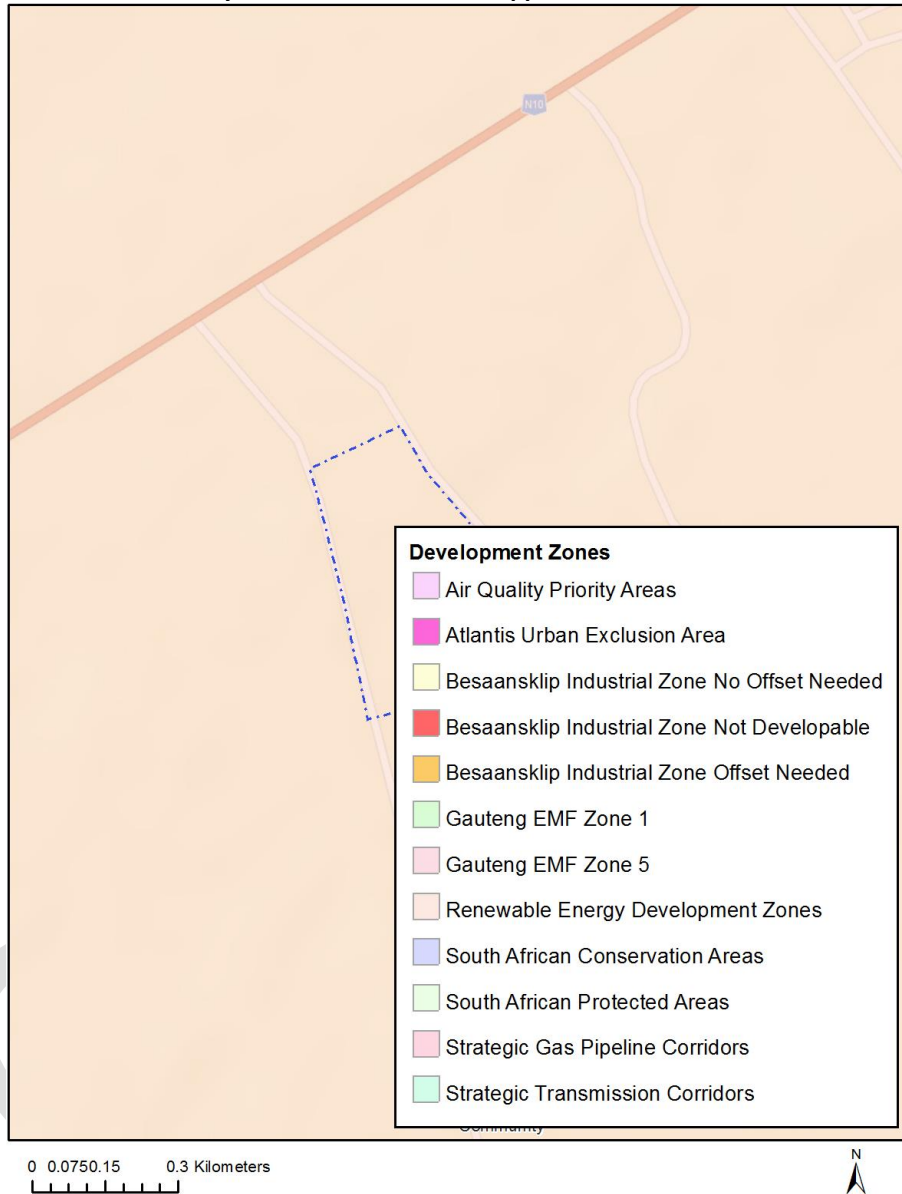
The following development incentives, restrictions, exclusions or prohibitions and their implications that apply to this site are indicated below.

Incentive, restriction or prohibition	Implication
Strategic Transmission Corridor-Northern corridor	<a href="https://screening.environment.gov.za/ScreeningDownloads/DevelopmentZones/Combined_EGI.pdf">https://screening.environment.gov.za/ScreeningDownloads/DevelopmentZones/Combined_EGI.pdf</a>
Renewable energy development zones 7-Upington	<a href="https://screening.environment.gov.za/ScreeningDownloads/DevelopmentZones/Combined_REDZ.pdf">https://screening.environment.gov.za/ScreeningDownloads/DevelopmentZones/Combined_REDZ.pdf</a>

OFFICIAL

## Map indicating proposed development footprint within applicable development incentive, restriction, exclusion or prohibition zones

**Project Location: Application for the proposed construction of an agri-industrial facility on Portion 64 of Vaal Koppies No 40, Kenhardt**



### Proposed Development Area Environmental Sensitivity

The following summary of the development site environmental sensitivities is identified. Only the highest environmental sensitivity is indicated. The footprint environmental sensitivities for the proposed development footprint as identified, are indicative only and must be verified on site by a suitably qualified person before the specialist assessments identified below can be confirmed.

Theme	Very High sensitivity	High sensitivity	Medium sensitivity	Low sensitivity
-------	-----------------------	------------------	--------------------	-----------------



Agriculture Theme				X
Animal Species Theme		X		
Aquatic Biodiversity Theme				X
Archaeological and Cultural Heritage Theme				X
Civil Aviation Theme		X		
Defence Theme			X	
Plant Species Theme				X
Terrestrial Biodiversity Theme	X			

### Specialist assessments identified

Based on the selected classification, and the environmental sensitivities of the proposed development footprint, the following list of specialist assessments have been identified for inclusion in the assessment report. It is the responsibility of the EAP to confirm this list and to motivate in the assessment report, the reason for not including any of the identified specialist study including the provision of photographic evidence of the site situation.

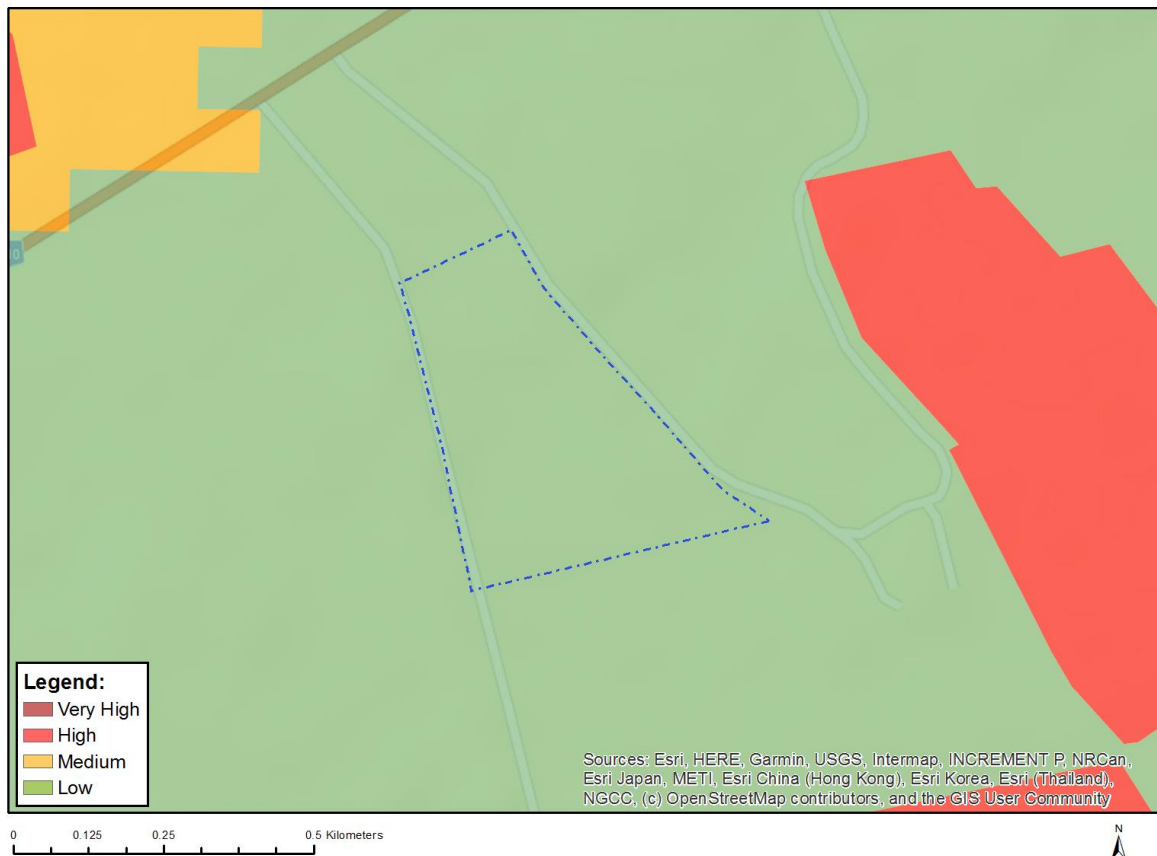
N o	Specialist assessment	Assessment Protocol
1	Agricultural Impact Assessment	<a href="https://screening.environment.gov.za/ScreeningDownloads/AssessmentProtocols/Gazetted_General_Agriculture_Assessment_Protocols.pdf">https://screening.environment.gov.za/ScreeningDownloads/AssessmentProtocols/Gazetted_General_Agriculture_Assessment_Protocols.pdf</a>
2	Archaeological and Cultural Heritage Impact Assessment	<a href="https://screening.environment.gov.za/ScreeningDownloads/AssessmentProtocols/Gazetted_General_Requirement_Assessment_Protocols.pdf">https://screening.environment.gov.za/ScreeningDownloads/AssessmentProtocols/Gazetted_General_Requirement_Assessment_Protocols.pdf</a>
3	Palaeontology Impact Assessment	<a href="https://screening.environment.gov.za/ScreeningDownloads/AssessmentProtocols/Gazetted_General_Requirement_Assessment_Protocols.pdf">https://screening.environment.gov.za/ScreeningDownloads/AssessmentProtocols/Gazetted_General_Requirement_Assessment_Protocols.pdf</a>
4	Terrestrial Biodiversity Impact Assessment	<a href="https://screening.environment.gov.za/ScreeningDownloads/AssessmentProtocols/Gazetted_Terrestrial_Biodiversity_Assessment_Protocols.pdf">https://screening.environment.gov.za/ScreeningDownloads/AssessmentProtocols/Gazetted_Terrestrial_Biodiversity_Assessment_Protocols.pdf</a>
5	Aquatic Biodiversity Impact Assessment	<a href="https://screening.environment.gov.za/ScreeningDownloads/AssessmentProtocols/Gazetted_Aquatic_Biodiversity_Assessment_Protocols.pdf">https://screening.environment.gov.za/ScreeningDownloads/AssessmentProtocols/Gazetted_Aquatic_Biodiversity_Assessment_Protocols.pdf</a>
6	Marine	<a href="https://screening.environment.gov.za/ScreeningDownloads/AssessmentProtocols/">https://screening.environment.gov.za/ScreeningDownloads/AssessmentProtocols/</a>

	Impact Assessment	<a href="#">Gazetted General Requirement Assessment Protocols.pdf</a>
7	Noise Impact Assessment	<a href="https://screening.environment.gov.za/ScreeningDownloads/AssessmentProtocols/Gazetted_Noise_Impacts_Assessment_Protocol.pdf">https://screening.environment.gov.za/ScreeningDownloads/AssessmentProtocols/Gazetted Noise Impacts Assessment Protocol.pdf</a>
8	Traffic Impact Assessment	<a href="https://screening.environment.gov.za/ScreeningDownloads/AssessmentProtocols/Gazetted_General_Requirement_Assessment_Protocols.pdf">https://screening.environment.gov.za/ScreeningDownloads/AssessmentProtocols/Gazetted General Requirement Assessment Protocols.pdf</a>
9	Health Impact Assessment	<a href="https://screening.environment.gov.za/ScreeningDownloads/AssessmentProtocols/Gazetted_General_Requirement_Assessment_Protocols.pdf">https://screening.environment.gov.za/ScreeningDownloads/AssessmentProtocols/Gazetted General Requirement Assessment Protocols.pdf</a>
10	Socio-Economic Assessment	<a href="https://screening.environment.gov.za/ScreeningDownloads/AssessmentProtocols/Gazetted_General_Requirement_Assessment_Protocols.pdf">https://screening.environment.gov.za/ScreeningDownloads/AssessmentProtocols/Gazetted General Requirement Assessment Protocols.pdf</a>
11	Ambient Air Quality Impact Assessment	<a href="https://screening.environment.gov.za/ScreeningDownloads/AssessmentProtocols/Gazetted_General_Requirement_Assessment_Protocols.pdf">https://screening.environment.gov.za/ScreeningDownloads/AssessmentProtocols/Gazetted General Requirement Assessment Protocols.pdf</a>
12	Air Quality Impact Assessment	<a href="https://screening.environment.gov.za/ScreeningDownloads/AssessmentProtocols/Gazetted_General_Requirement_Assessment_Protocols.pdf">https://screening.environment.gov.za/ScreeningDownloads/AssessmentProtocols/Gazetted General Requirement Assessment Protocols.pdf</a>
13	Plant Species Assessment	<a href="https://screening.environment.gov.za/ScreeningDownloads/AssessmentProtocols/Gazetted_Plant_Species_Assessment_Protocols.pdf">https://screening.environment.gov.za/ScreeningDownloads/AssessmentProtocols/Gazetted Plant Species Assessment Protocols.pdf</a>
14	Animal Species Assessment	<a href="https://screening.environment.gov.za/ScreeningDownloads/AssessmentProtocols/Gazetted_Animal_Species_Assessment_Protocols.pdf">https://screening.environment.gov.za/ScreeningDownloads/AssessmentProtocols/Gazetted Animal Species Assessment Protocols.pdf</a>

## Results of the environmental sensitivity of the proposed area.

The following section represents the results of the screening for environmental sensitivity of the proposed site for relevant environmental themes associated with the project classification. It is the duty of the EAP to ensure that the environmental themes provided by the screening tool are comprehensive and complete for the project. Refer to the disclaimer.

### MAP OF RELATIVE AGRICULTURE THEME SENSITIVITY

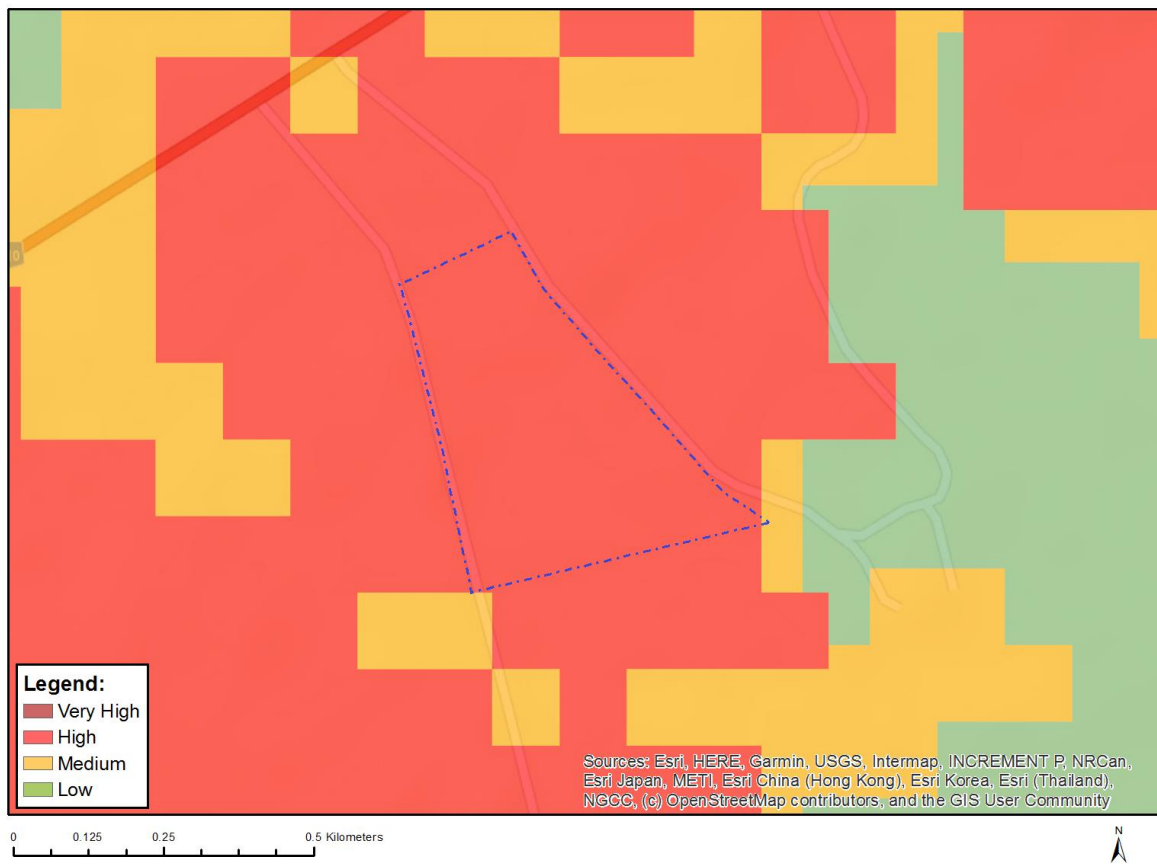


Very High sensitivity	High sensitivity	Medium sensitivity	Low sensitivity
			X

#### Sensitivity Features:

Sensitivity	Feature(s)
Low	Land capability;01. Very low/02. Very low/03. Low-Very low/04. Low-Very low/05. Low

## MAP OF RELATIVE ANIMAL SPECIES THEME SENSITIVITY



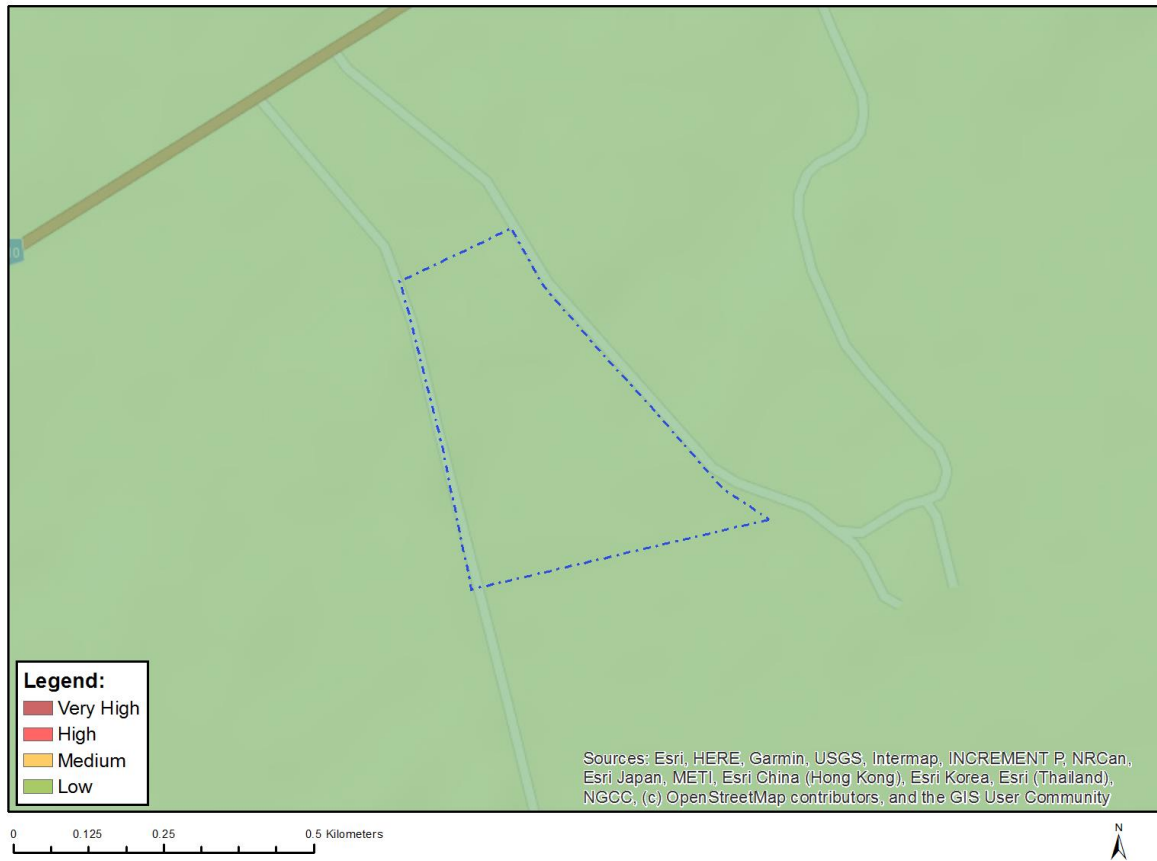
Where only a sensitive plant unique number or sensitive animal unique number is provided in the screening report and an assessment is required, the environmental assessment practitioner (EAP) or specialist is required to email SANBI at [eiadatarequests@sanbi.org.za](mailto:eiadatarequests@sanbi.org.za) listing all sensitive species with their unique identifiers for which information is required. The name has been withheld as the species may be prone to illegal harvesting and must be protected. SANBI will release the actual species name after the details of the EAP or specialist have been documented.

Very High sensitivity	High sensitivity	Medium sensitivity	Low sensitivity
	X		

### Sensitivity Features:

Sensitivity	Feature(s)
High	Aves-Falco biarmicus
Medium	Aves-Neotis ludwigii

## MAP OF RELATIVE AQUATIC BIODIVERSITY THEME SENSITIVITY



Very High sensitivity	High sensitivity	Medium sensitivity	Low sensitivity
			X

### Sensitivity Features:

Sensitivity	Feature(s)
Low	Low sensitivity

# MAP OF RELATIVE ARCHAEOLOGICAL AND CULTURAL HERITAGE THEME SENSITIVITY

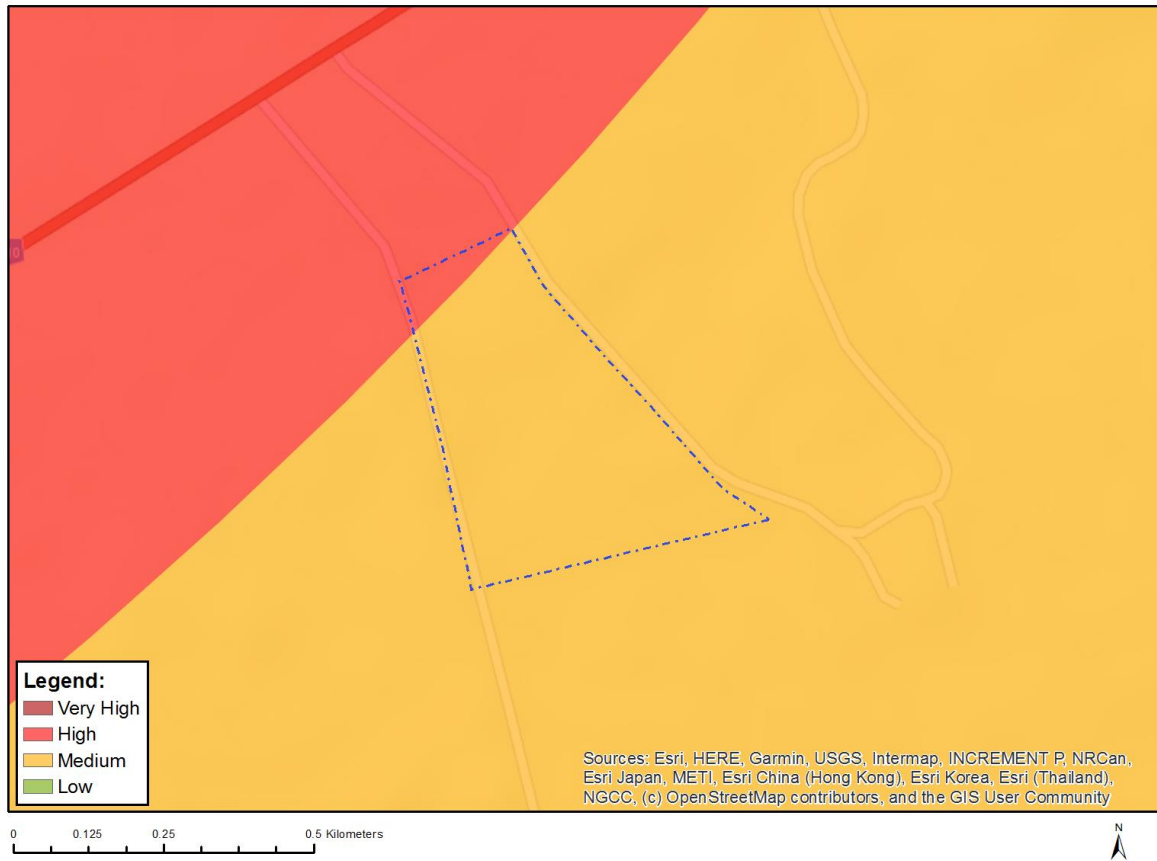


Very High sensitivity	High sensitivity	Medium sensitivity	Low sensitivity
			X

**Sensitivity Features:**

Sensitivity	Feature(s)
Low	Low sensitivity

## MAP OF RELATIVE CIVIL AVIATION THEME SENSITIVITY

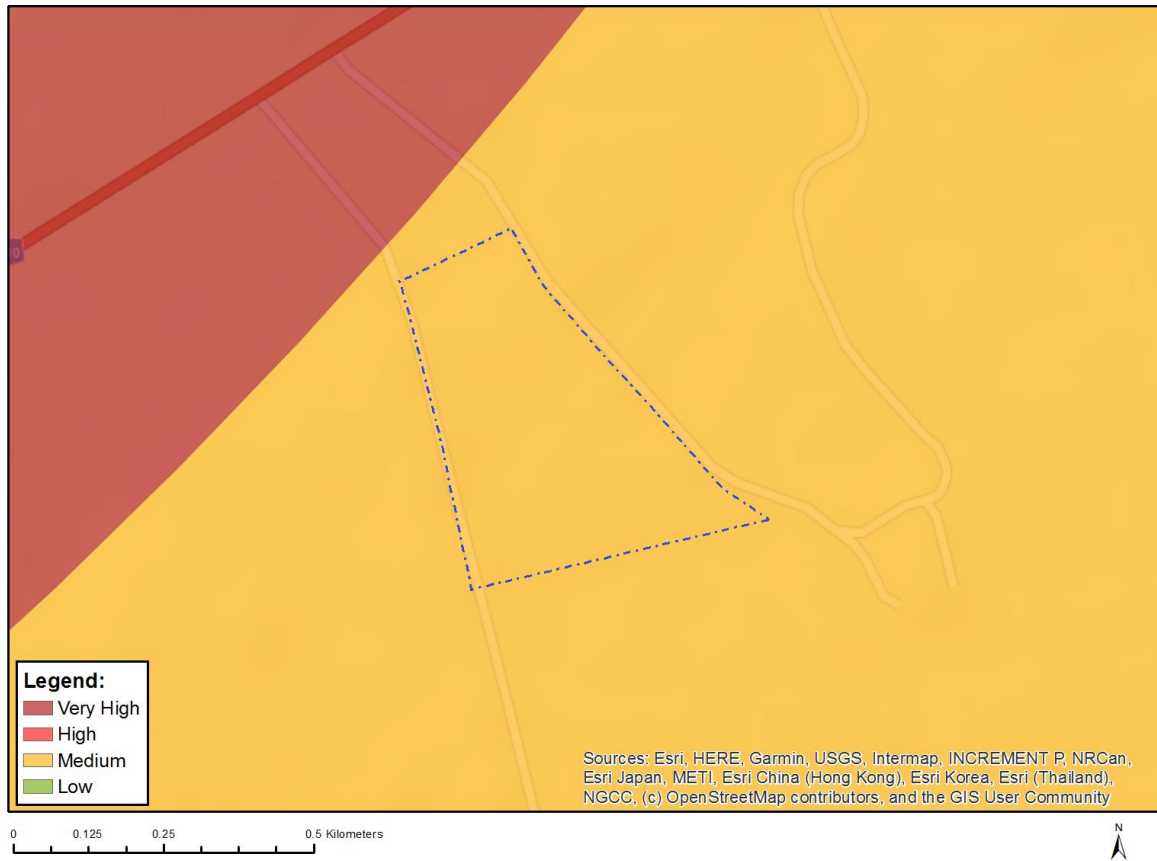


Very High sensitivity	High sensitivity	Medium sensitivity	Low sensitivity
	X		

### Sensitivity Features:

Sensitivity	Feature(s)
High	Within 8 km of other civil aviation aerodrome
Medium	Within 5 km of an air traffic control or navigation site
Medium	Between 8 and 15 km of other civil aviation aerodrome

## MAP OF RELATIVE DEFENCE THEME SENSITIVITY



Very High sensitivity	High sensitivity	Medium sensitivity	Low sensitivity
		X	

### Sensitivity Features:

Sensitivity	Feature(s)
Medium	Military and Defence Site



## MAP OF RELATIVE PLANT SPECIES THEME SENSITIVITY



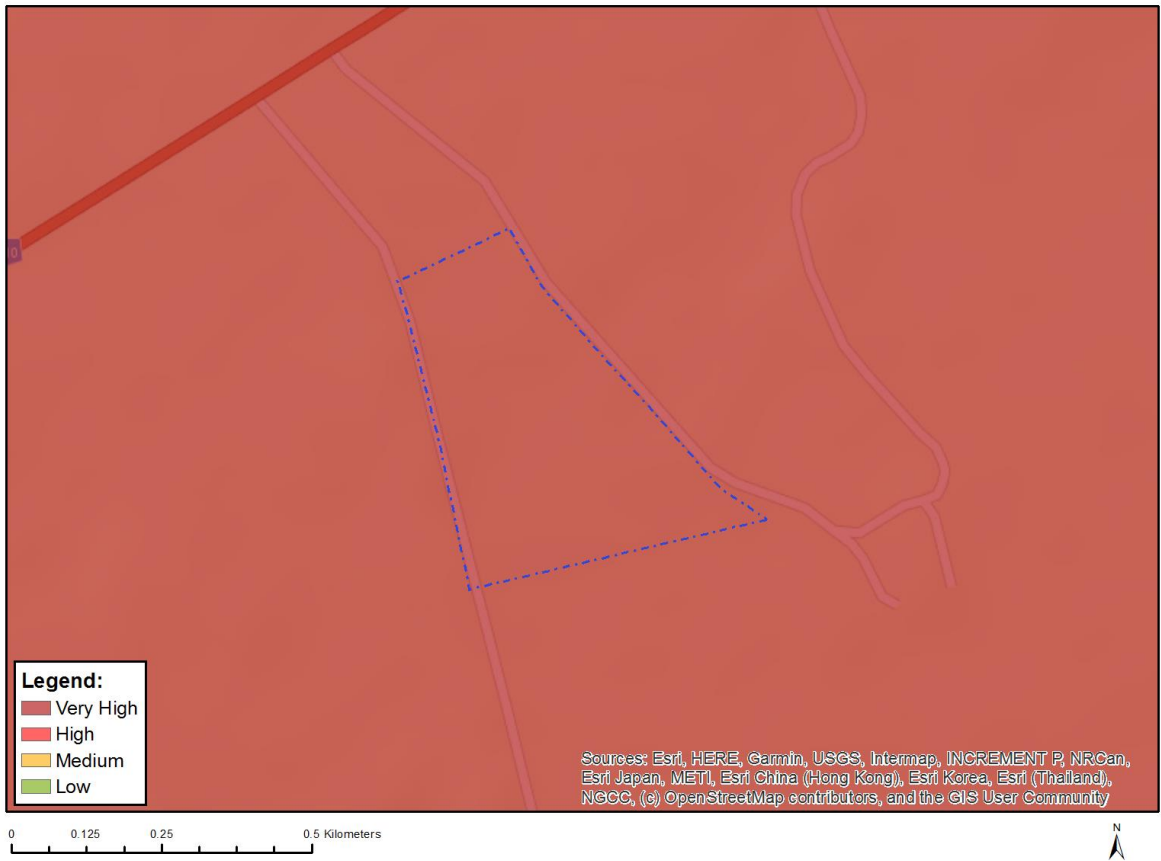
Where only a sensitive plant unique number or sensitive animal unique number is provided in the screening report and an assessment is required, the environmental assessment practitioner (EAP) or specialist is required to email SANBI at [eiadatarequests@sanbi.org.za](mailto:eiadatarequests@sanbi.org.za) listing all sensitive species with their unique identifiers for which information is required. The name has been withheld as the species may be prone to illegal harvesting and must be protected. SANBI will release the actual species name after the details of the EAP or specialist have been documented.

Very High sensitivity	High sensitivity	Medium sensitivity	Low sensitivity
			X

### Sensitivity Features:

Sensitivity	Feature(s)
Low	Low Sensitivity

# MAP OF RELATIVE TERRESTRIAL BIODIVERSITY THEME SENSITIVITY



Very High sensitivity	High sensitivity	Medium sensitivity	Low sensitivity
X			

### Sensitivity Features:

Sensitivity	Feature(s)
Very High	Ecological support area
Very High	Protected Areas Expansion Strategy