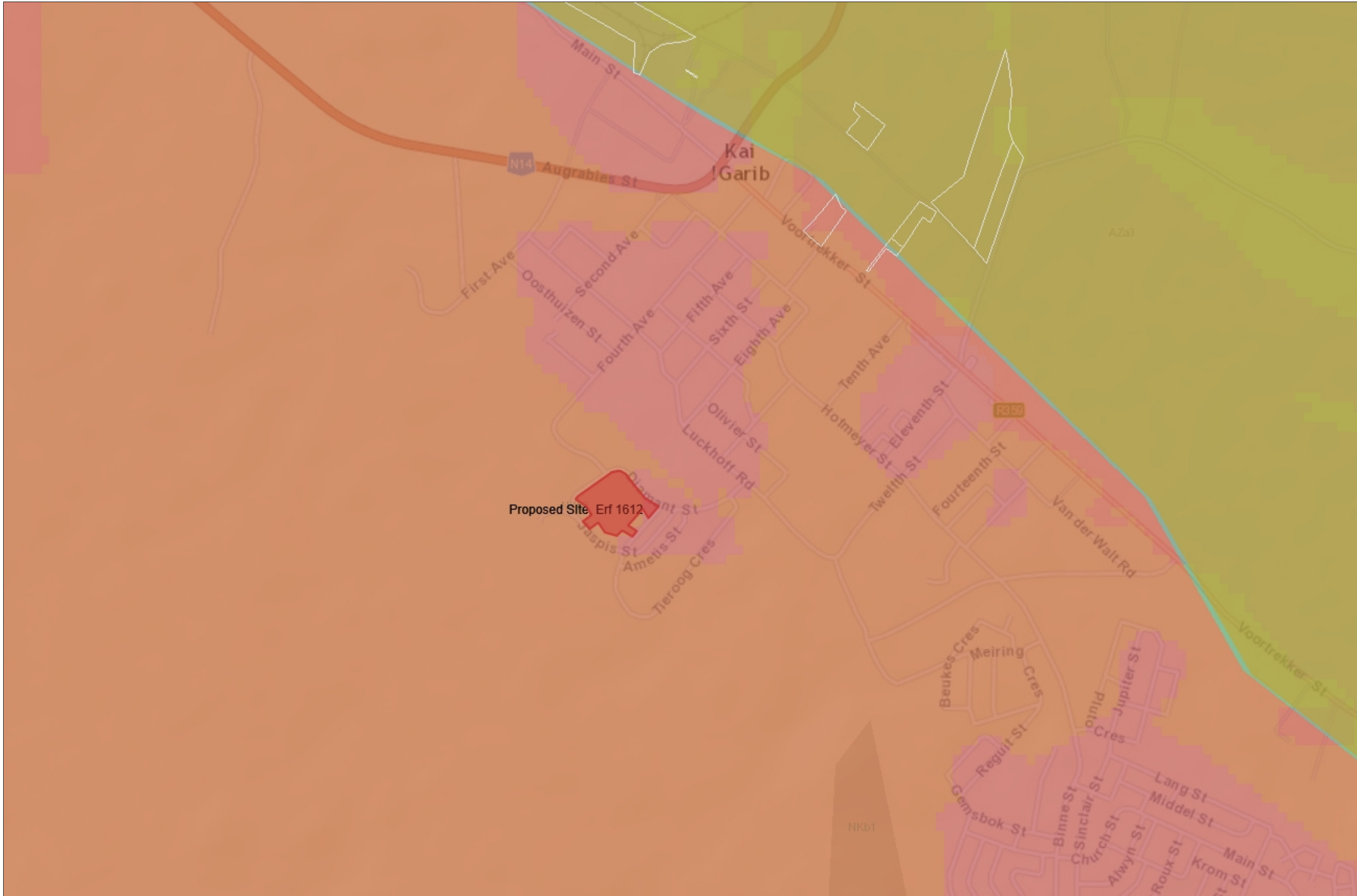


Biodiversity Overview, Kakamas Housing Development (Erf 1612)

Description

Legend

- Municipal Summaries Northern Cape
 - Local municipalities - LUDS
 - South African municipal boundaries 2009
 - South African parent farm cadaster
 - Primary river catchments
 - Secondary river catchments
 - Tertiary river catchments
 - Quarternary river catchment
 - Wetland clusters (NFEPA)
 - National wetlands map 4 (NFEPA)
 - Formal protected areas (NBA 2011)
 - Informal protected areas (NPAES)
 - Marine Protected Areas MPAs (NBA 2011)
- Indigenous forest patches**
- A1: Lowveld Riverine Forests
 - A2: Swamp Forests
 - A3: Mangrove Forests
 - A4: Licuati Sand Forests
 - I2: Western Cape Afrotemperate Forests
 - I3: Southern Cape Afrotemperate Forests
 - II3: Drakensberg Montane Forests
 - II4: Northern KwaZulu-Natal Mistbelt Forests
 - III1: Northern Mistbelt Forests
 - III2: Mpumalanga Mistbelt Forests
 - IV1: Eastern Mistbelt Forests
 - IV2: Transkei Mistbelt Forests
 - IV3: Amatole Mistbelt Forests
 - V1: Eastern Scarp Forests



1: 14 353



This map is a user generated static output from an Internet mapping site and is for reference only. Data layers that appear on this map may or may not be accurate, current, or otherwise reliable.

THIS MAP IS NOT TO BE USED FOR NAVIGATION

