

Oryx Solar Energy Facility

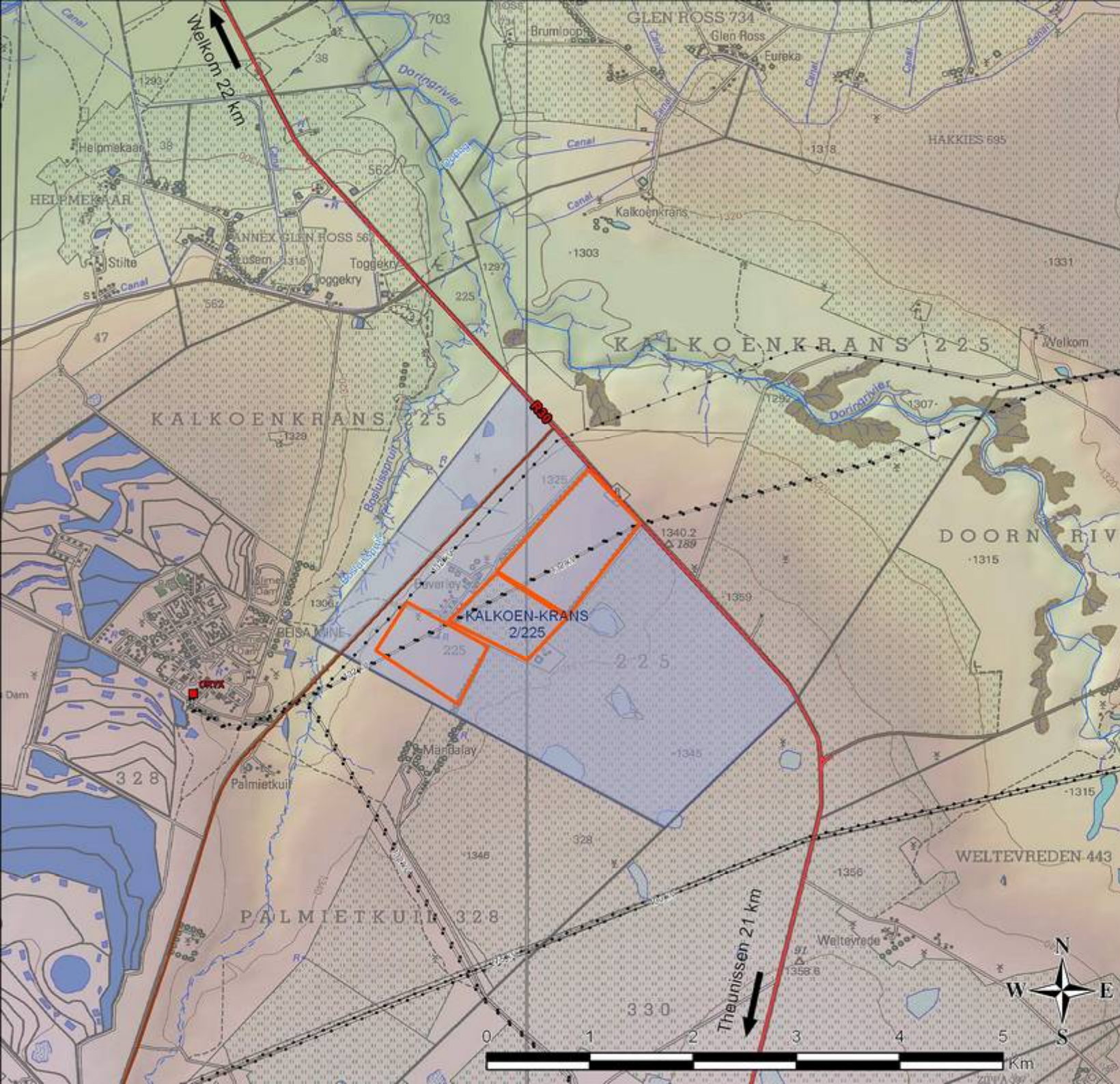
Locality Map

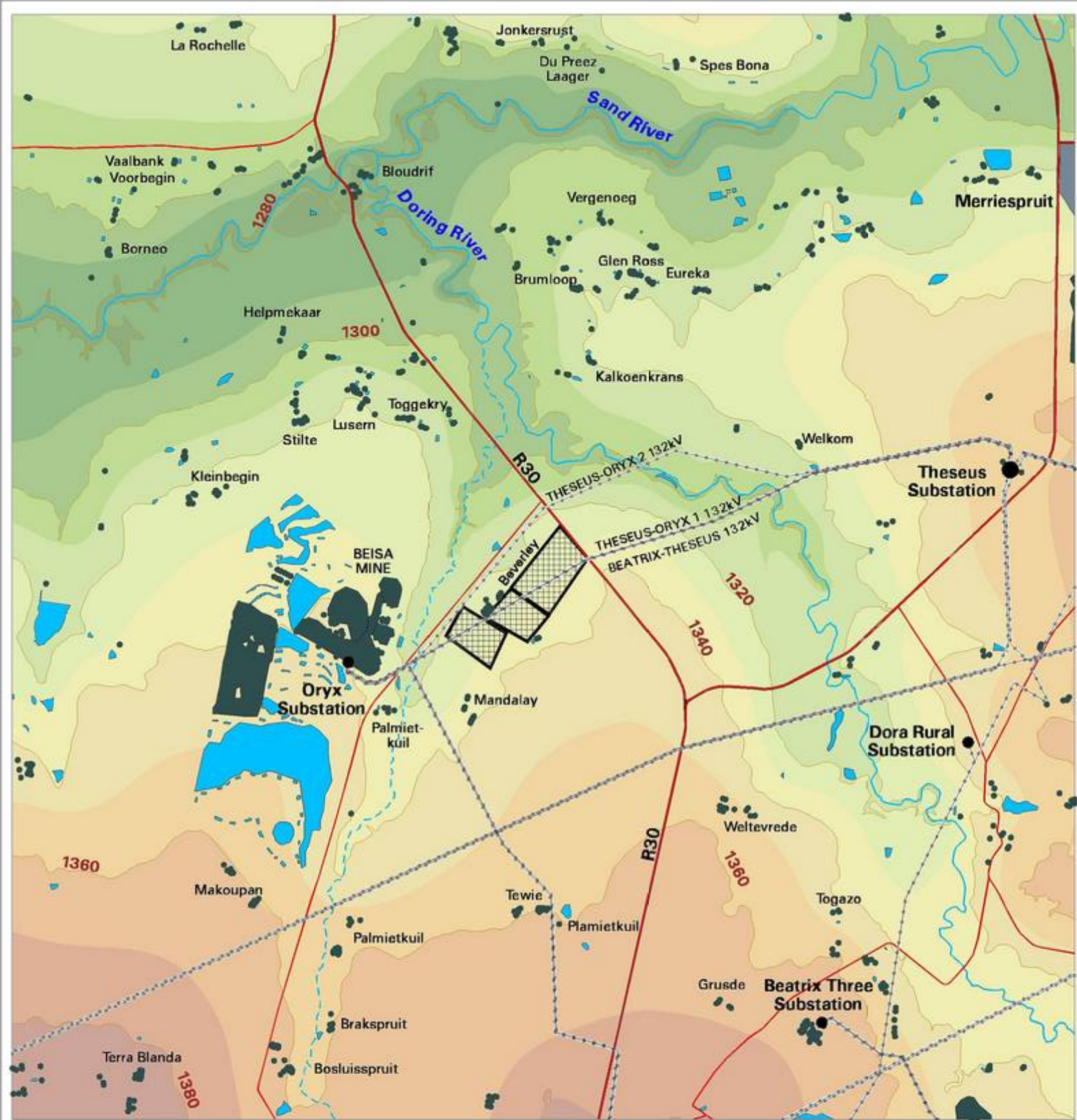
Legend

- National Road
- Regional Road
- Secondary Road
- Railway Line
- Perennial River
- Non-perennial River
- Existing Power Line
- Distribution Substation

Layout

- SEF farm portion
- Project boundary


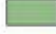




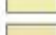









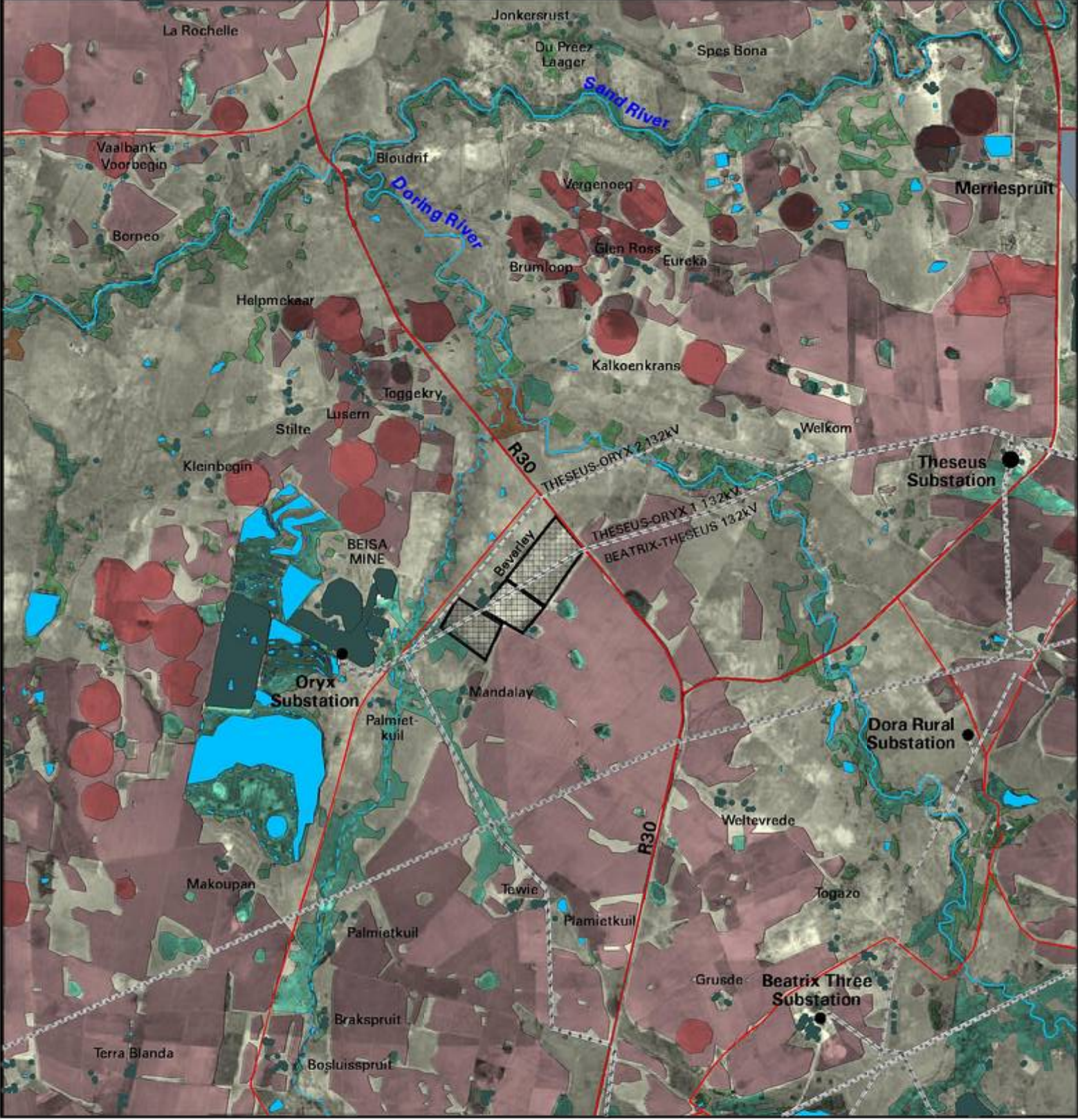
LEGEND

-  Proposed Site for the Oryx Solar Energy Facility
-  Arterial/Main Road
-  Secondary Road
-  Major Power Line (132kV and greater)
-  Substation
-  Non-perennial River
-  Perennial River
-  Waterbody
-  Town/Built-up Area
-  Industrial/Mining Area
-  Homestead/Farm Residence





TOPOGRAPHY/SHADED RELIEF
Elevation above sea level (m)

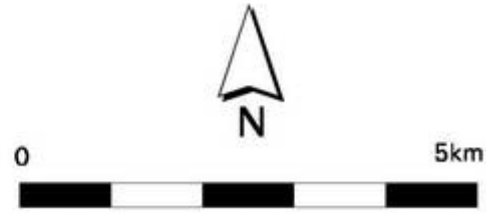
-  1,280
-  1,290
-  1,300
-  1,310
-  1,320
-  1,330
-  1,340
-  1,350
-  1,360
-  1,370
-  1,380
-  1,390

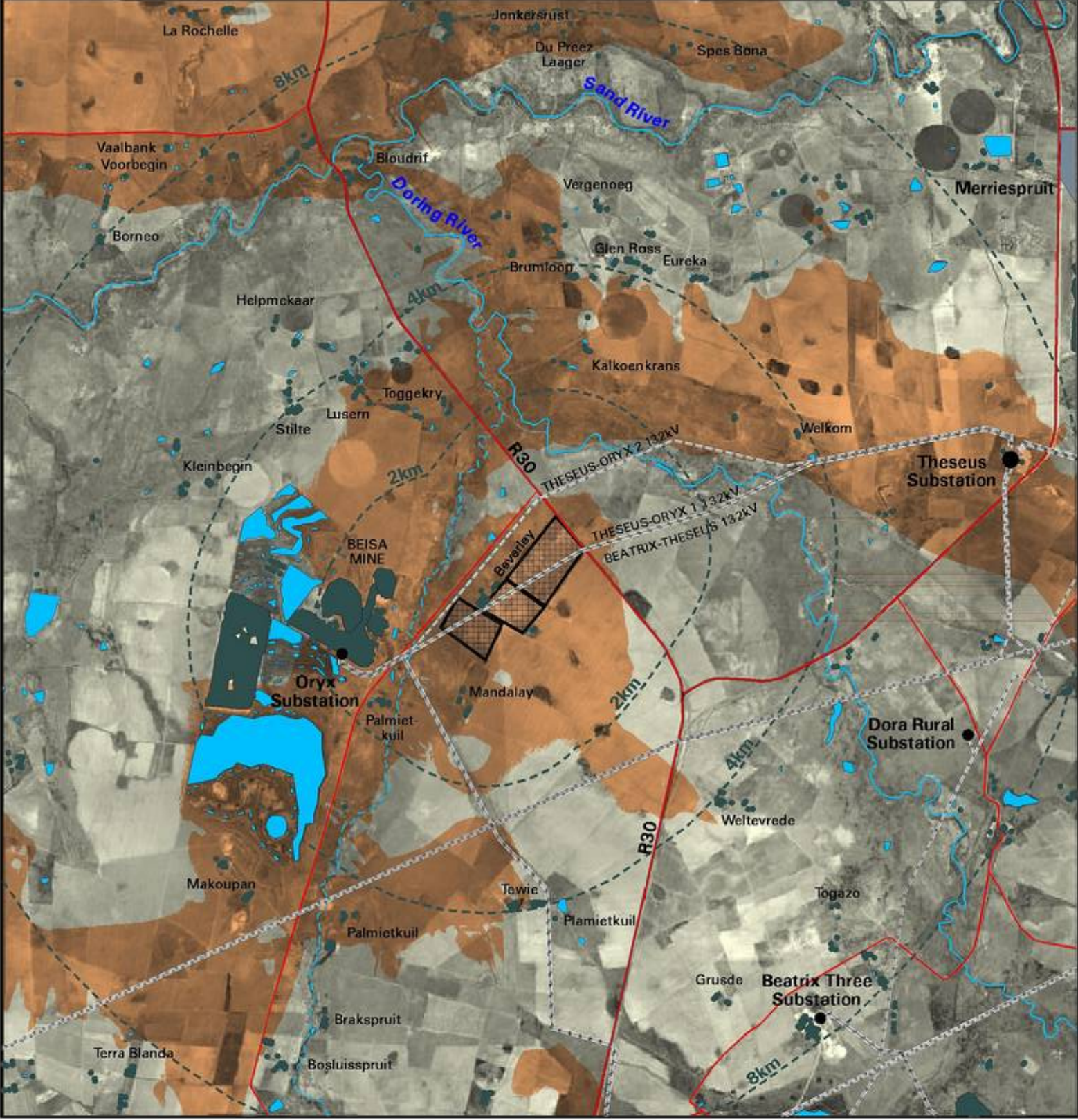




- LEGEND**
-  Proposed Site for the Oryx Solar Energy Facility
 -  Arterial/Main Road
 -  Secondary Road
 -  Major Power Line (132kV and greater)
 -  Substation
 -  Non-perennial River
 -  Perennial River
 -  Waterbody
 -  Town/Built-up Area
 -  Industrial/Mining Area
 -  Homestead/Farm Residence

- LAND COVER/BROAD LAND USE PATTERNS**
-  Grassland
 -  Wetland
 -  Irrigated Agriculture
 -  Dryland Agriculture



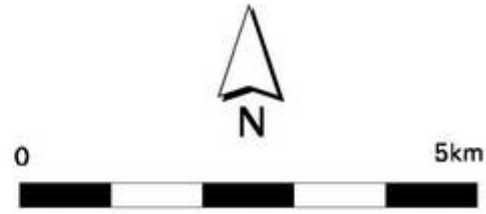


- LEGEND**
- Proposed Site for the Oryx Solar Energy Facility
 - Arterial/Main Road
 - Secondary Road
 - Major Power Line (132kV and greater)
 - Substation
 - Non-perennial River
 - Perennial River
 - Waterbody
 - Town/Built-up Area
 - Industrial/Mining Area
 - Homestead/Farm Residence

- PRELIMINARY VISIBILITY ANALYSIS**
- Potentially visible
 - Not visible
 - Proximity radii to the proposed development site

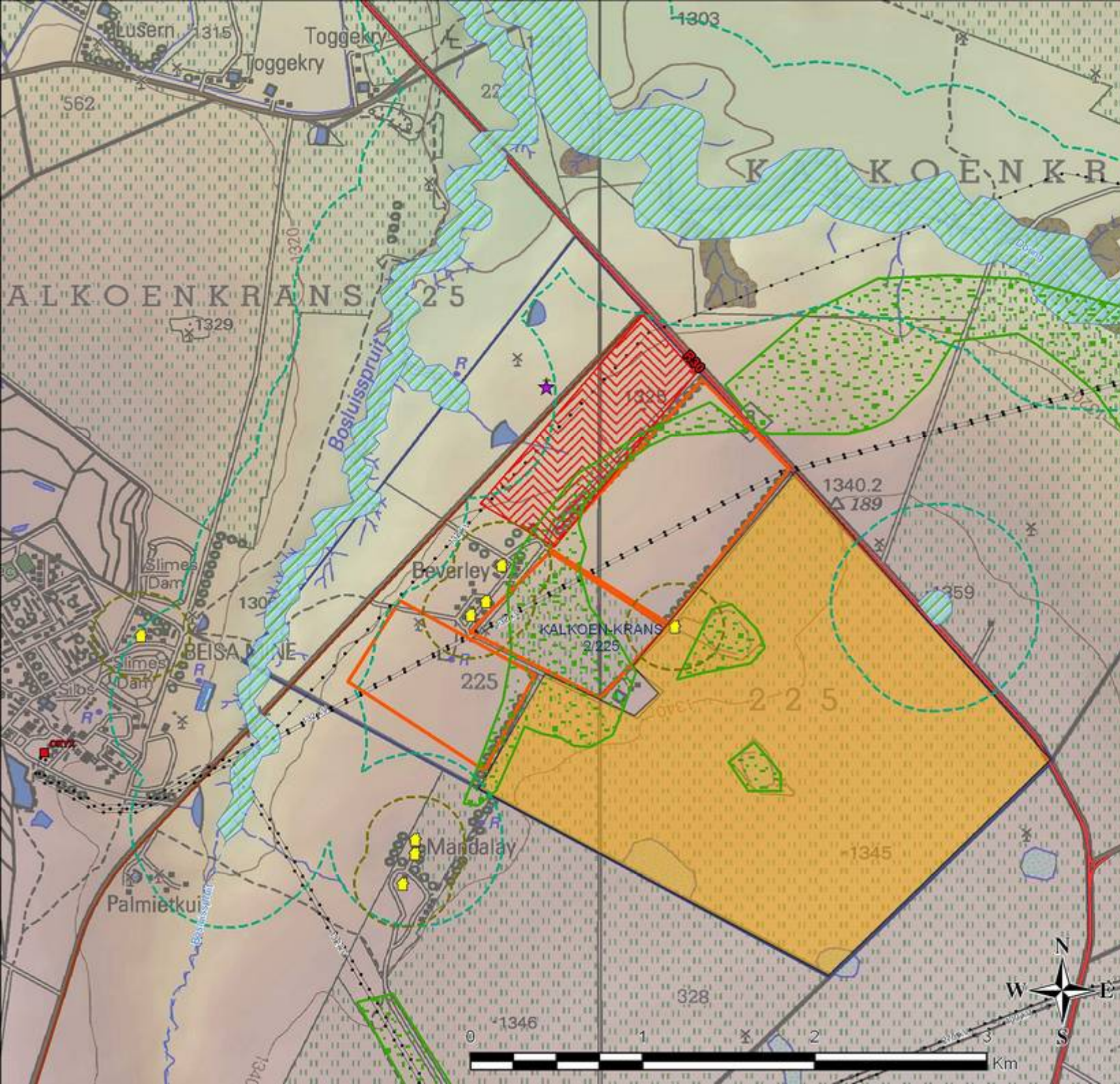
Notes:

- The viewshed analysis does not include the effect of planted vegetation and/or structures.
- Visibility was calculated at a maximum offset of 4m above ground level (i.e. the approximate maximum height of the PV structures).



Oryx Solar Energy Facility

Sensitivity Map



Legend

- National Road
- Regional Road
- Secondary Road
- Railway Line
- Perennial River
- Non-perennial River
- Existing Power Line
- Distribution Substation

Layout

- SEF farm portion boundary
- PV Areas

Sensitivity

- Grave / Cemetary
- Dwelling
- 250m buffer of dwellings
- Critical biodiversity
- Agriculture
- Wetlands
- 500m buffer of wetlands
- No-go area



