

# Woodhouse Solar 2 PV Facility, North West Province

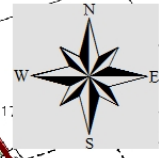
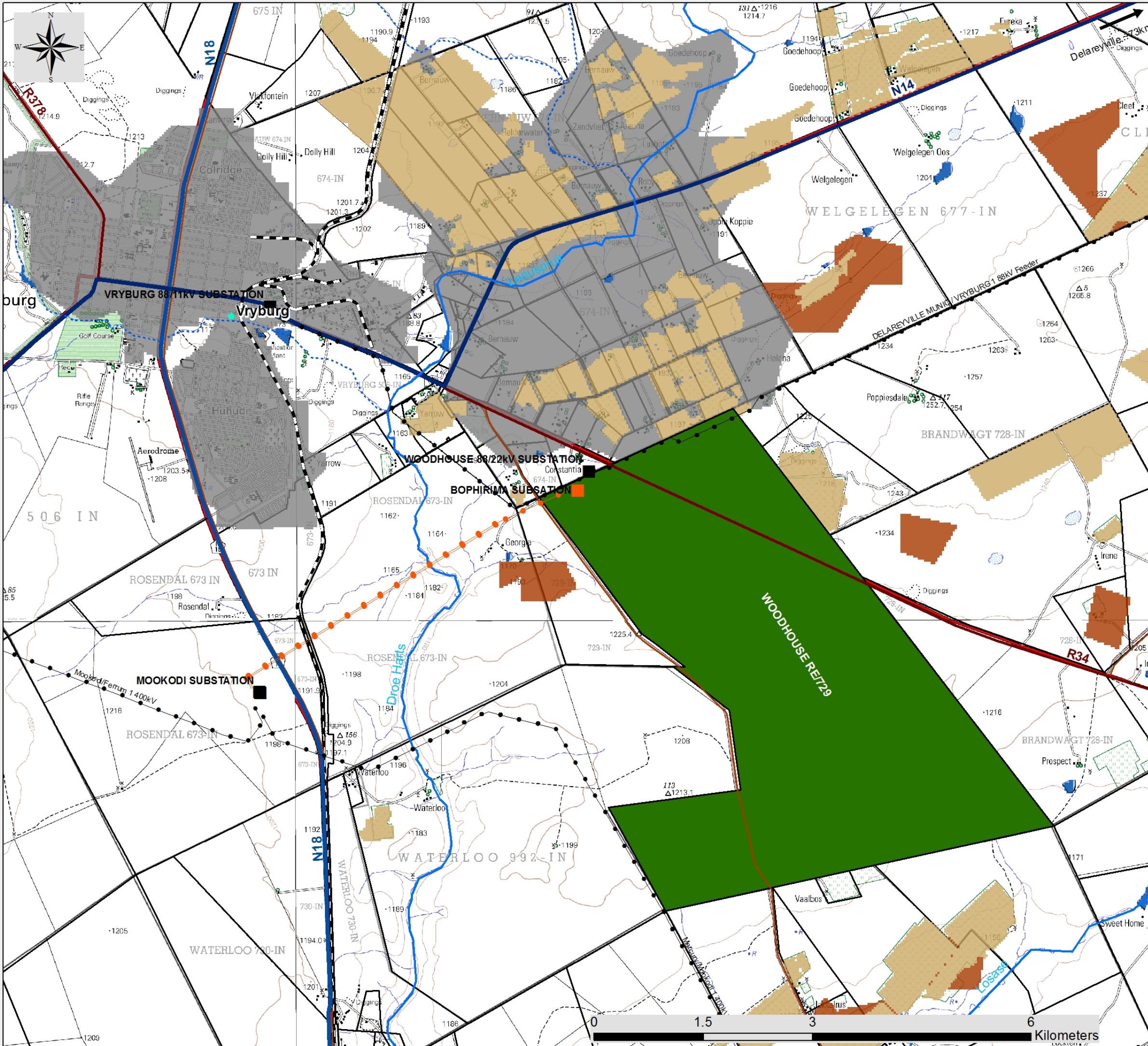
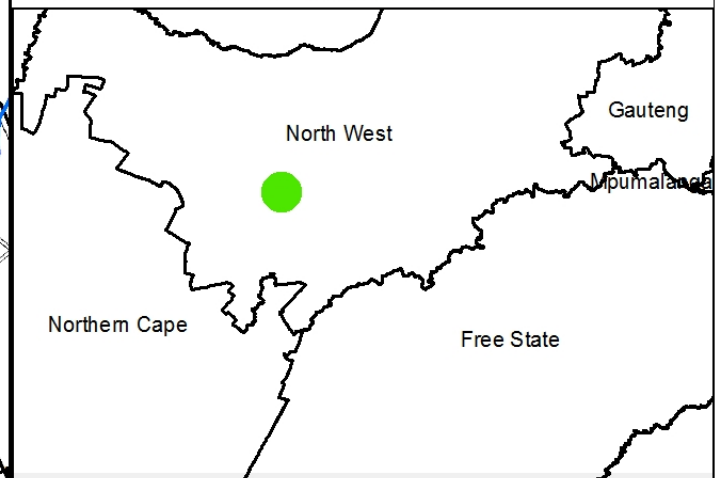
## Locality Map

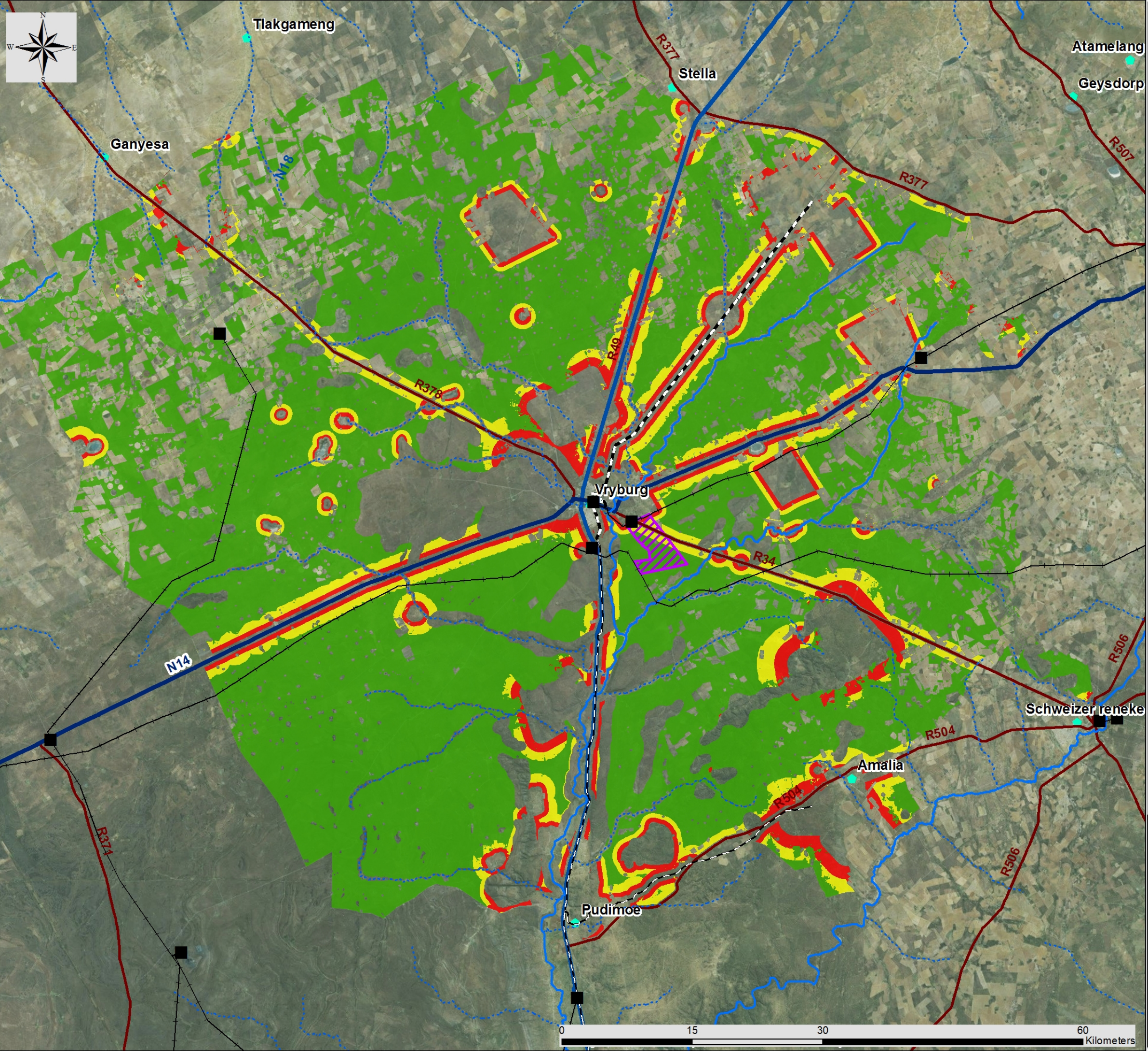
### Legend

- Town
  - Eskom substation
  - Authorised Eskom Bophirima Substation (to be constructed)
  - Authorised 132kV Bophirima - Mookodi Power Line (to be constructed)
  - Existing Power Line
  - National route
  - Regional road
  - Main road
  - Railway Line
  - Perennial river
  - Non-perennial river
  - Farm Portions
  - Woodhouse Solar 2 Project Site
- Land use:
- Cultivation
  - Degraded
  - Mines
  - Urban Built-up
  - Waterbodies



Scale: 1:50 000  
 Projection: LO25  
 Map Ref.: Woodhouse 1&2 - Locality Map 15.04.16





# Woodhouse Solar 2 PV Facility, North West Province

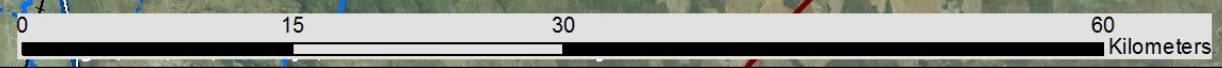
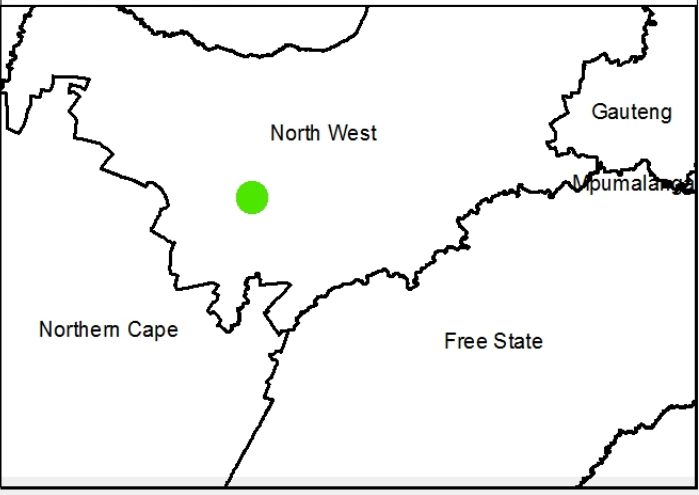
Landscape sensitivity for the proposed  
Vryburg REDZ 6 focus area

## Legend

- ◆ Town
- Eskom substation
- Existing Power Line
- Railway Line
- Perrenial river
- Non-perennial river
- National route
- Regional road
- Woodhouse Solar 2 Project site

## Landscape Sensitivity:

- Very High
- High
- Medium
- Low



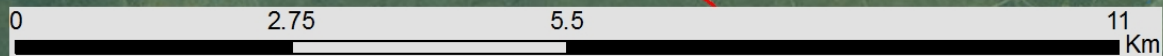
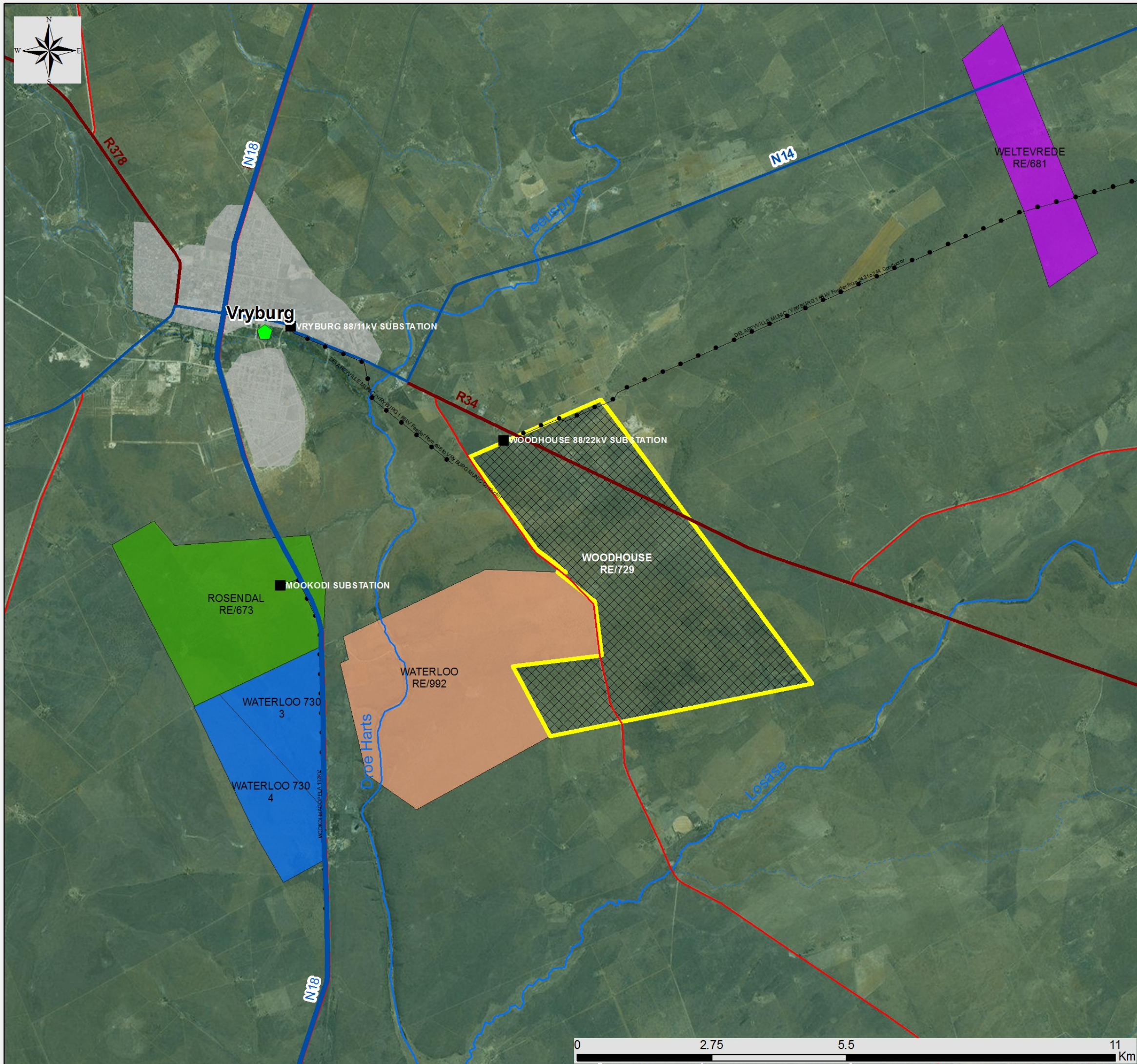
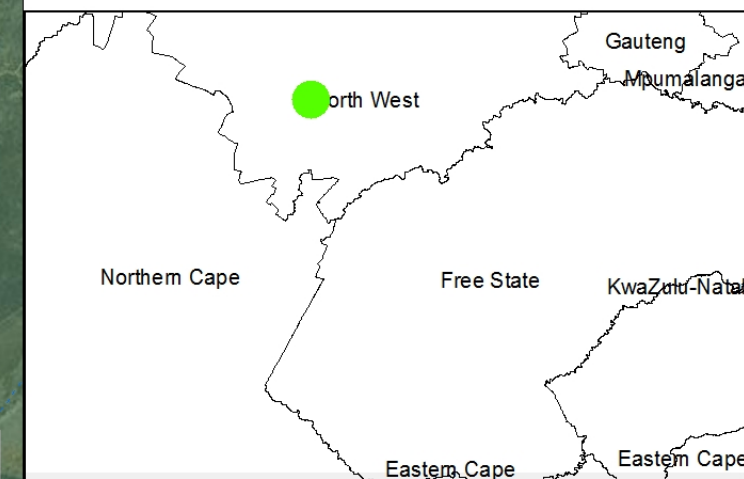


# Woodhouse Solar 2 PV Facility, North West Province

(in relation to other solar energy  
projects in the area)

## Legend











- Distribution substation
  - Existing power line
  - - - Railway Line
  - National route
  - Regional road
  - Main road
  - Perennial river
  - - - Non-perennial river
  - Settlements
  - ▨ Woodhouse Solar 2 Project site
- Other solar energy projects:**
- Authorised Carocraft Solar Park
  - Authorised Sediba Solar Energy Facility
  - Authorised Waterloo Solar Park (Preferred Bidder)
  - Authorised Tiger Kloof Solar Energy Facility
  - ▨ Woodhouse Solar 1 PV Facility (Proposed)



# Woodhouse Solar 2 PV Facility, North West Province

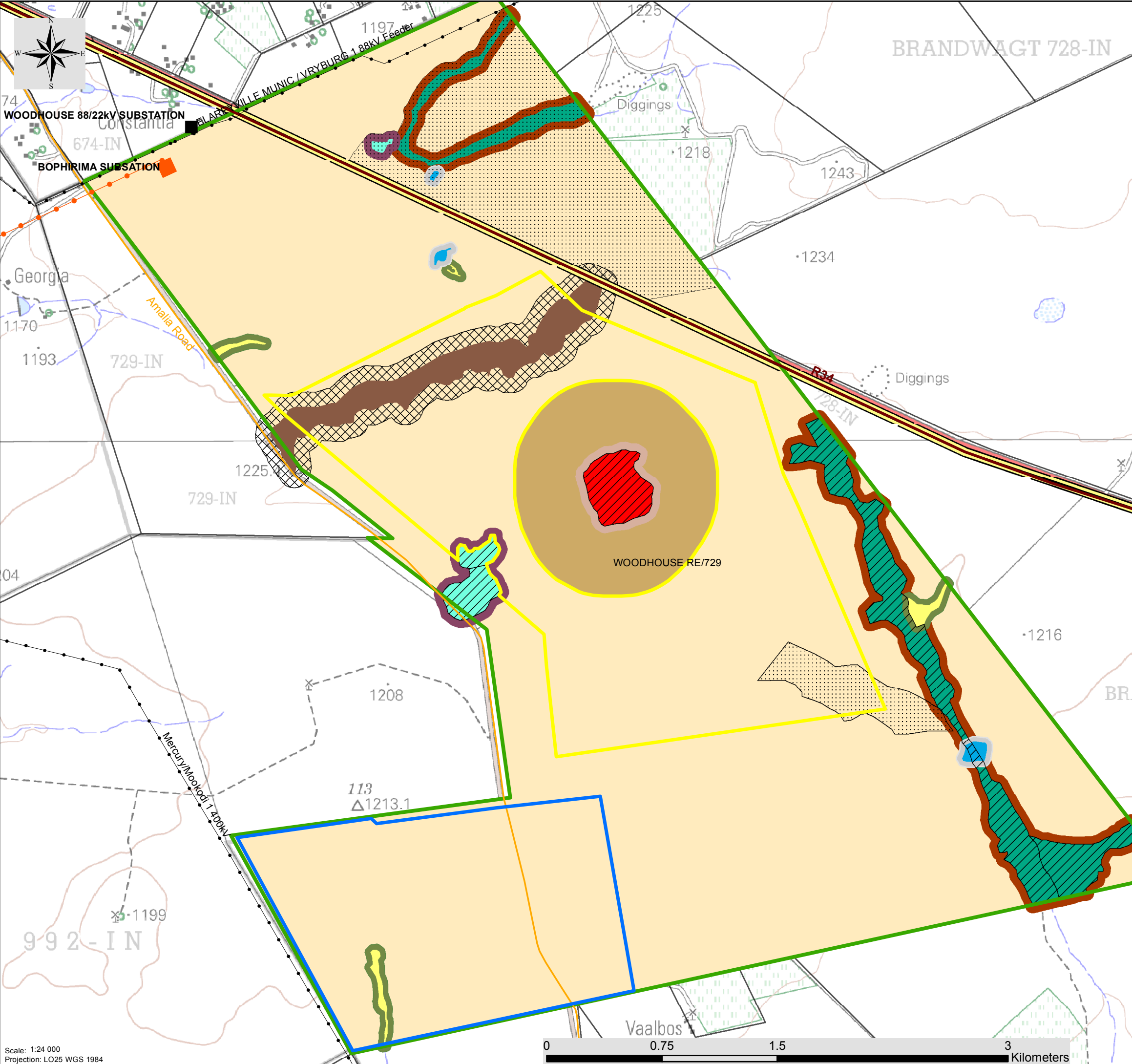
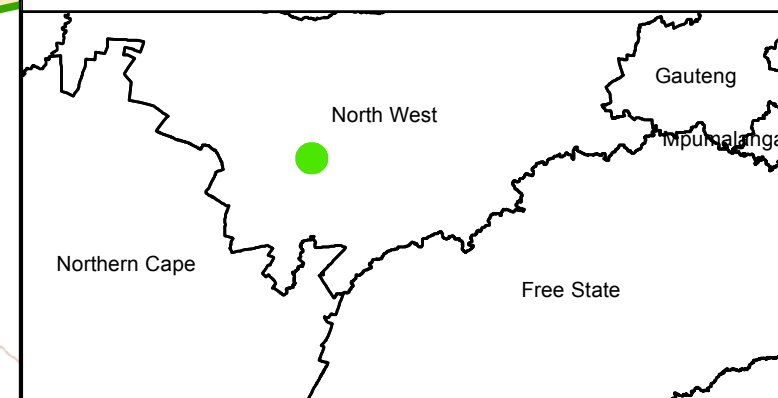
## Environmental Sensitivity and Site Alternatives Map

### Legend

-  Eskom substation (existing)
-  Existing Power Line
-  Authorised 132kV Bophirima - Mookodi Power Line (to be constructed)
-  Regional road
-  Main road
-  Authorised Eskom Bophirima Substation (to be constructed)
-  Farm Portions
-  Woodhouse Solar 2 Project site
-  Woodhouse Solar 2 Site Alternative 1 - Preferred
-  Woodhouse Solar 2 Site Alternative 2 - Alternative

### Environmental Sensitivities:

-  R34 (Visual Receptor)
-  Depression Wetland (Very High Ecological Sensitivity)
-  Depression Wetland 50m Buffer (Very High Ecological Sensitivity)
-  Wetland and Drainage Line (Very High Avifaunal Sensitivity)
-  Artificial Dam and Associated Wetland (High Ecological Sensitivity)
-  Artificial Dam and Associated Wetland 35m Buffer (High Ecological Sensitivity)
-  Wetlands (High Ecological Sensitivity)
-  Wetland 35m Buffer (High Ecological Sensitivity)
-  Ephemeral Tributary (High Ecological Sensitivity)
-  Ephemeral Tributary 35m Buffer (High Ecological Sensitivity)
-  Ephemeral Stream (High Ecological Sensitivity)
-  Ephemeral Stream 50m Buffer (High Ecological Sensitivity)
-  Formally listed ESA (Medium-High Ecological Sensitivity)
-  Ridge (Crest & Upper Slope) (Medium-High Ecological Sensitivity)
-  Ridge (Crest & Upper Slope) 100m Buffer (Medium Avifaunal Sensitivity)
-  Bushveld/Woody Habitat (Medium Avifaunal Sensitivity)
-  Open Kalahari Bushveld (Medium - Low Ecological Sensitivity)



Scale: 1:24 000  
 Projection: LO25 WGS 1984  
 Map Ref.: Woodhouse 2 - Site Alt. Sens 04.05.16





# Woodhouse Solar 2 PV Facility, North West Province

Environmental Sensitivity and Preliminary Layout Map

## Legend

- Existing Power Line
- Main road
- Farm Portions
- Woodhouse Solar 2 Project site
- Woodhouse Solar 2 Site Alternative 1 - Preferred

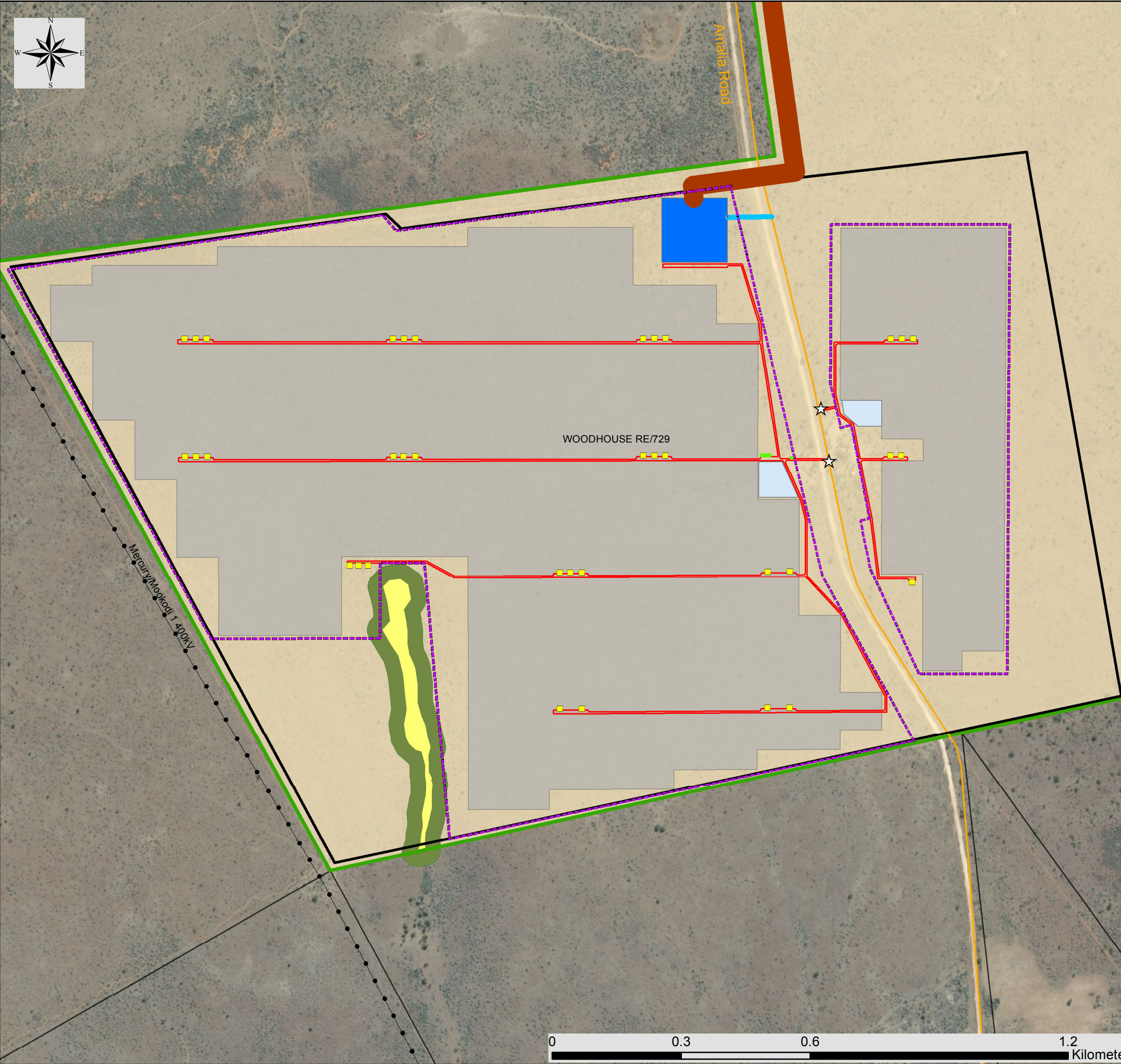
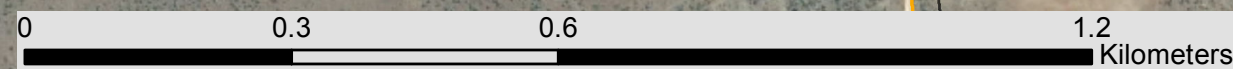
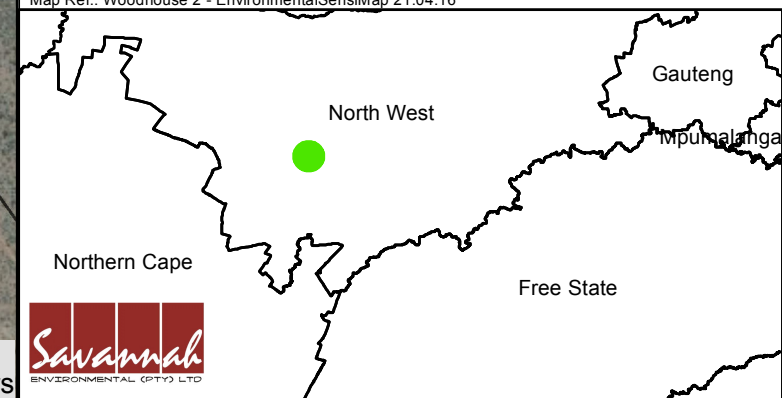
## Layout Plan:

- Main Access Point
- Inverter
- Internal Access Roads
- On-site Facility Substation Access road
- Fence
- PV Panel Area
- On-Site Facility Substation
- Permanent Compound Area
- O&M Building, Parking, Septic Tank & Borehole
- Power Line Corridor (100m)

## Environmental Sensitivities:

- Ephemeral Tributary (High Ecological Sensitivity)
- Ephemeral Tributary 35m Buffer (High Ecological Sensitivity)
- Open Kalahari Bushveld (Medium - Low Ecological Sensitivity)

Scale: 1:8 500  
 Projection: LO25 WGS 1984  
 Map Ref.: Woodhouse 2 - EnvironmentalSensiMap 21.04.16





# Woodhouse Solar 2 PV Facility, North West Province

Environmental Sensitivity and Optimised Layout Map

## Legend

- Existing Power Line
- Main road
- Farm Portions
- ▭ Woodhouse Solar 2 Project site
- ▭ Woodhouse Solar 2 Site Alternative 1 - Preferred

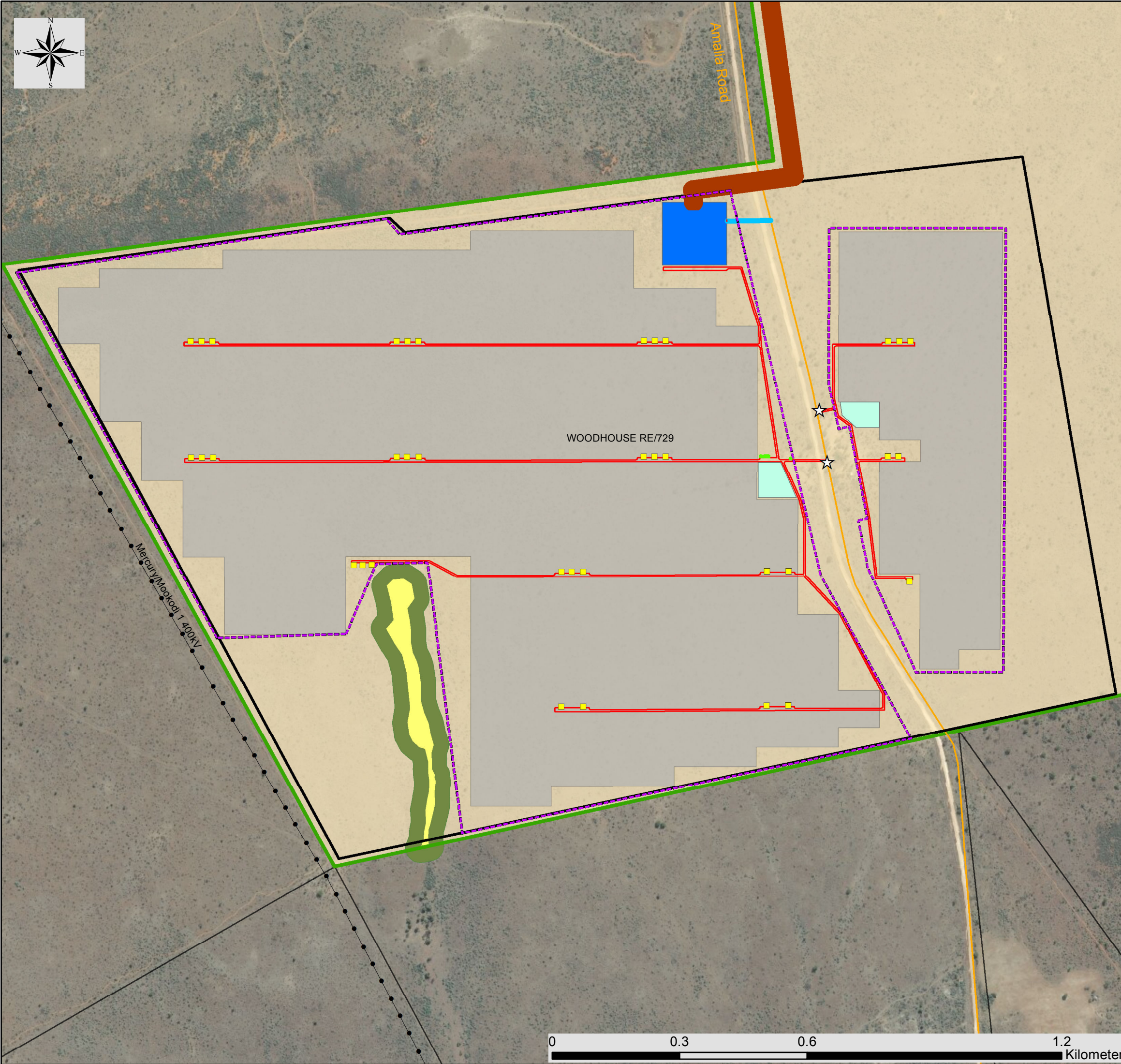
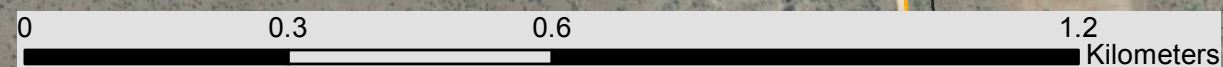
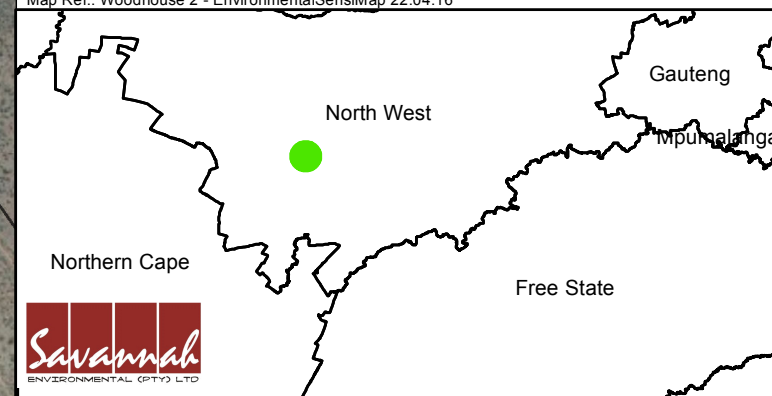
## Layout Plan:

- ☆ Main Access Point
- Inverter
- Internal Access Roads
- On-site Facility Substation Access road
- ▭ Facility Fence
- Power Line Corridor (100m)
- PV Panel Area
- On-Site Facility Substation
- Permanent Compound Area
- O&M Building, Parking, Septic Tank & Borehole

## Environmental Sensitivities:

- Ephemeral Tributary (High Ecological Sensitivity)
- Ephemeral Tributary 35m Buffer (High Ecological Sensitivity)
- Open Kalahari Bushveld (Medium - Low Ecological Sensitivity)

Scale: 1:8 607  
 Projection: LO25 WGS 1984  
 Map Ref: Woodhouse 2 - EnvironmentalSensiMap 22.04.16



# Woodhouse Solar 2 PV Facility, North West Province

## Environmental Sensitivity and Power Line Corridor Map



### Legend

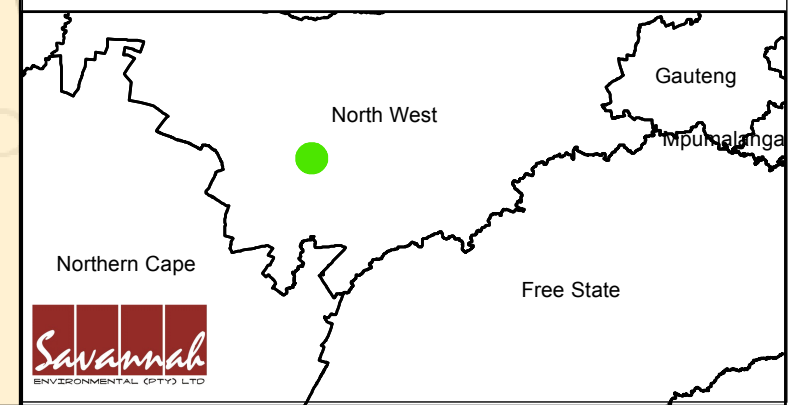
- Eskom substation (existing)
- Existing Power Line
- Authorised 132kV Bophirima - Mookodi Power Line (to be constructed)
- Regional road
- Main road
- Authorised Eskom Bophirima Substation (to be constructed)
- Farm Portions
- Woodhouse Solar 2 Project site
- Woodhouse Solar 2 Site Alternative 1 - Preferred

### Layout Plan:

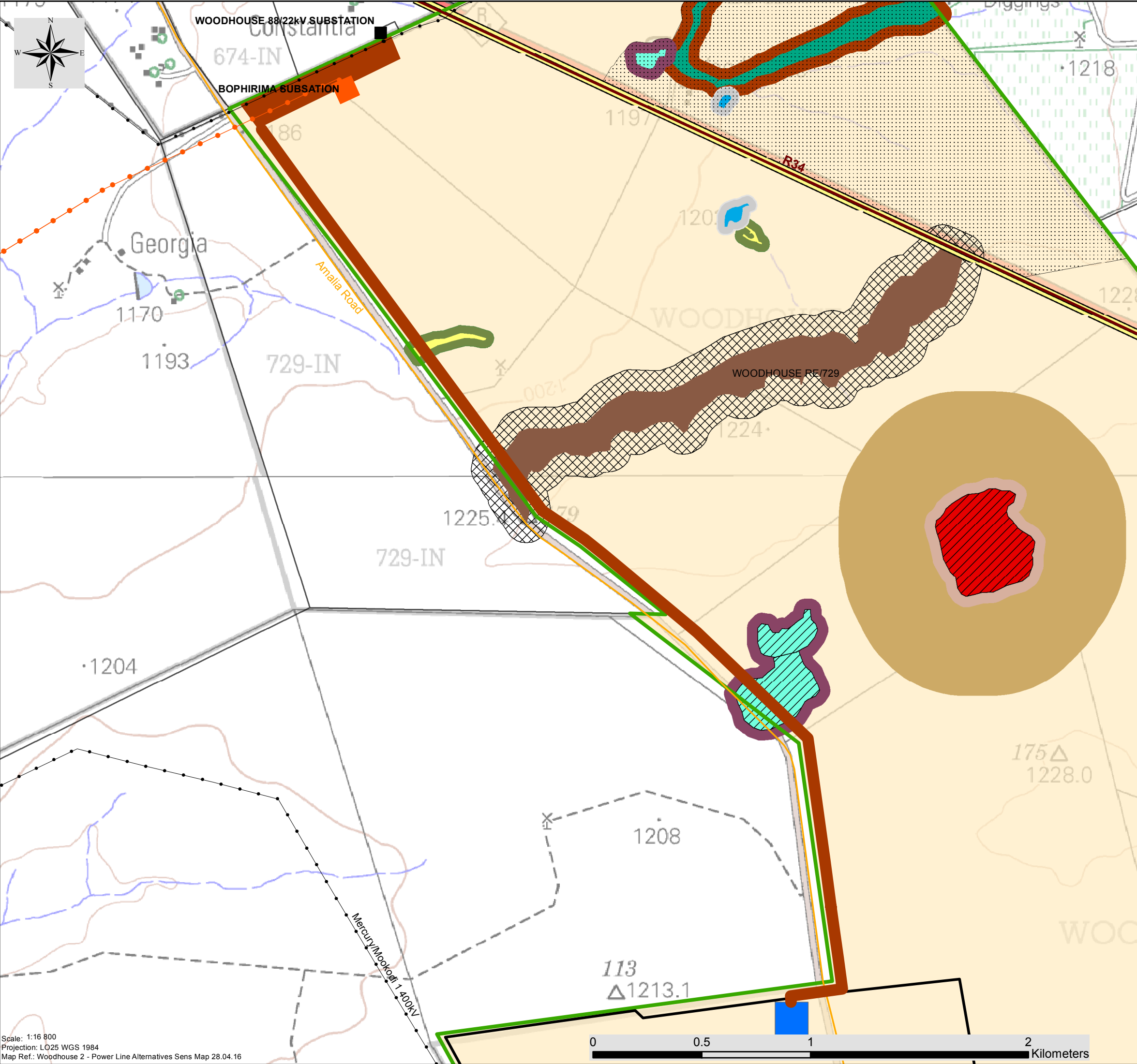
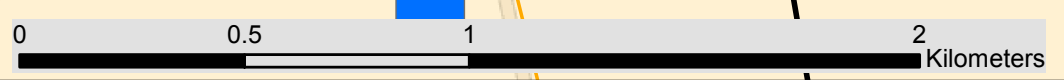
- Power Line Corridor (100m)
- On-Site Facility Substation

### Environmental Sensitivities:

- R34 (Visual Receptor)
- Depression Wetland (Very High Avifaunal Sensitivity)
- Depression Wetland (Very High Ecological Sensitivity)
- Depression Wetland 50m Buffer (Very High Ecological Sensitivity)
- Artificial Dam and Associated Wetland (High Ecological Sensitivity)
- Artificial Dam and Associated Wetland 35m Buffer (High Ecological Sensitivity)
- Wetlands (High Ecological Sensitivity)
- Wetland 35m Buffer (High Ecological Sensitivity)
- Ephemeral Tributary (High Ecological Sensitivity)
- Ephemeral Tributary 35m Buffer (High Ecological Sensitivity)
- Ephemeral Stream (High Ecological Sensitivity)
- Ephemeral Stream 50m Buffer (High Ecological Sensitivity)
- Formally listed ESA (Medium-High Ecological Sensitivity)
- Ridge (Crest & Upper Slope) (Medium-High Ecological Sensitivity)
- Ridge (Crest & Upper Slope) 100m Buffer (Medium Avifaunal Sensitivity)
- Bushveld/Woody Habitat (Medium Avifaunal Sensitivity)
- Open Kalahari Bushveld (Medium - Low Ecological Sensitivity)




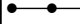







Scale: 1:16 800  
 Projection: LO25 WGS 1984  
 Map Ref.: Woodhouse 2 - Power Line Alternatives Sens Map 28.04.16







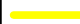



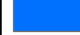

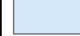
# Woodhouse Solar 2 PV Facility, North West Province

Optimised Layout Map

## Legend

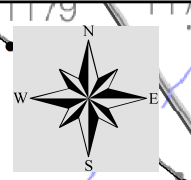
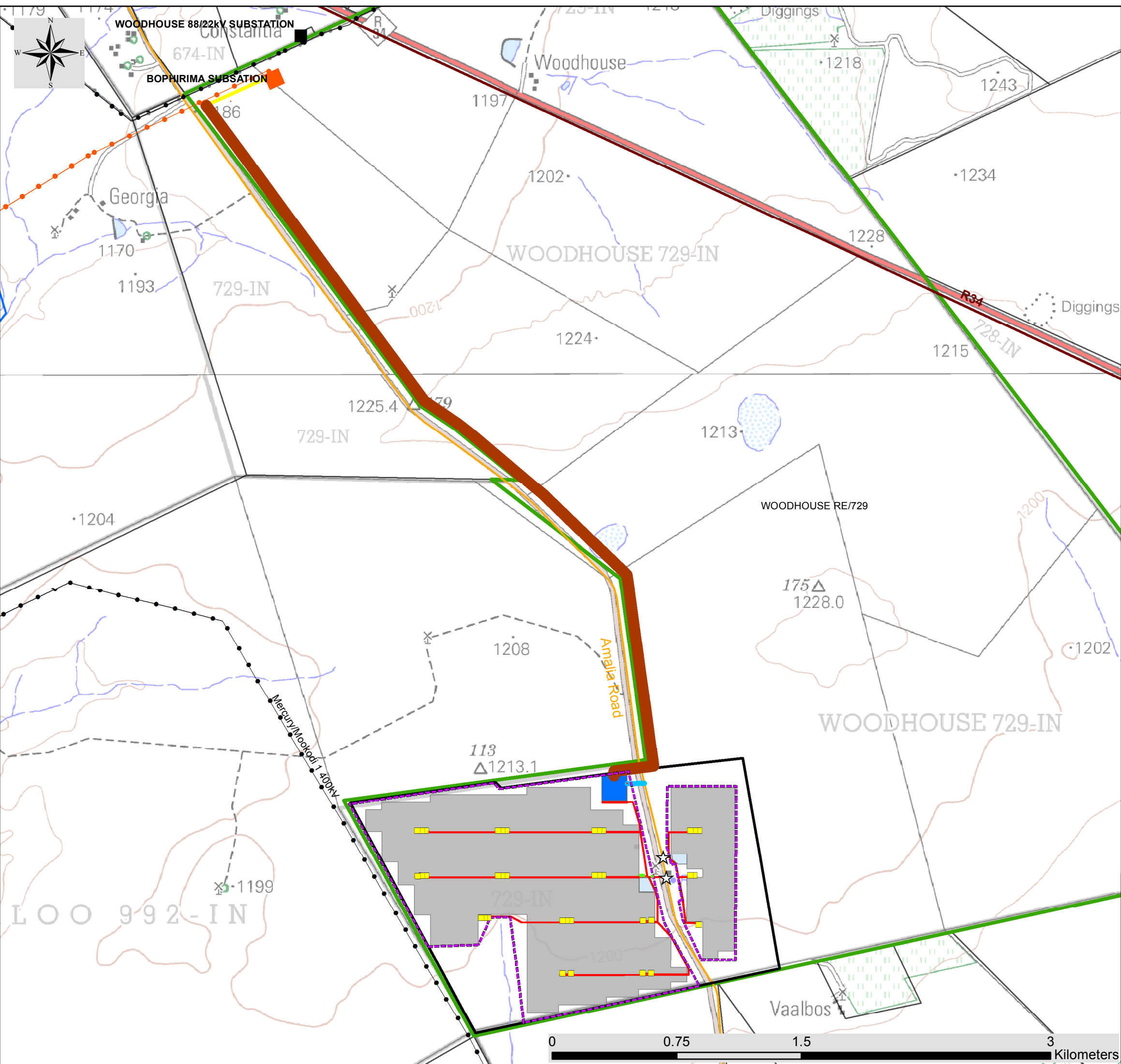
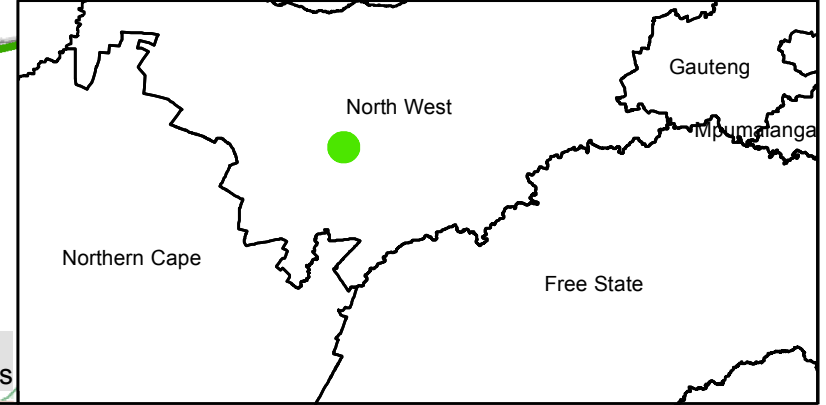
-  Eskom substation
-  Existing Power Line
-  Authorised 132kV Bophirima - Mookodi Power Line (to be constructed)
-  Regional road
-  Main road
-  Authorised Eskom Bophirima Substation (to be constructed)
-  Farm Portions
-  Woodhouse Solar 2 Project site
-  Woodhouse Solar 2 Site Alternative 1 - Preferred

## Layout Plan:

-  Main Access Points
-  Inverter
-  Internal Access Roads
-  On-site Facility Substation Access road
-  Grid connection - authorised Eskom Bophirima Substation
-  Facility Fence
-  Power Line Corridor (100m)
-  PV Panel Area
-  On-Site Facility Substation
-  O&M Building, Parking, Septic Tank & Borehole
-  Permanent Compound Area



Scale: 1:22 000  
 Projection: LO25 WGS 1984  
 Map Ref.: Woodhouse 2 - Layout Map (Optimised) 27.04.16





**Woodhouse Solar 2 PV Facility – Coordinates**

	Coordinates	
	Latitude (S)	Longitude (E)
<b>Development footprint corner coordinates – Western portion</b> (staring in the north western corner moving clockwise)		
1	27°1'23.682"S	24°47'36.507"E
2	27°1'19.588"S	24°48'08.094"E
3	27°1'20.806"S	24°48'09.291"E
4	27°1'17.416"S	24°48'37.445"E
5	27°1'46.912"S	24°48'45.075"E
6	27°1'59.408"S	24°48'52.83"E
7	27°2'06.599"S	24°48'14.492"E
8	27°1'45.92"S	24°48'11.528"E
9	27°1'45.979"S	24°48'07.161"E
10	27°1'51.348"S	24°48'04.535"E
11	27°1'51.654"S	24°47'53.52"E
<b>Development footprint corner coordinates – Eastern portion</b> (staring in the north western corner moving clockwise)		
1	27°1'20.397"S	24°48'45.915"E
2	27°1'20.382"S	24°49'00.966"E
3	27°1'54.32"S	24°49'00.719"E
4	27°1'54.31"S	24°48'53.193"E
5	27°1'46.396"S	24°48'49.097"E
6	27°1'42.716"S	24°48'48.259"E
7	27°1'42.545"S	24°44'49.104"E
8	27°1'35.528"S	24°48'47.464"E
9	27°1'35.699"S	24°48'46.658"E
10	27°1'32.534"S	24°48'45.818"E
<b>Grid connection alternatives – 100m power line corridor</b>		
Start coordinate (on-site substation)	27°1'18.352"S	24°48'34.286"E
Middle coordinate	27°0'14.527"S	24°48'07.974"E
End coordinate	26°59'07.837"S	24°47'06.152"E