

Woodhouse Solar 2 PV Facility, North West Province

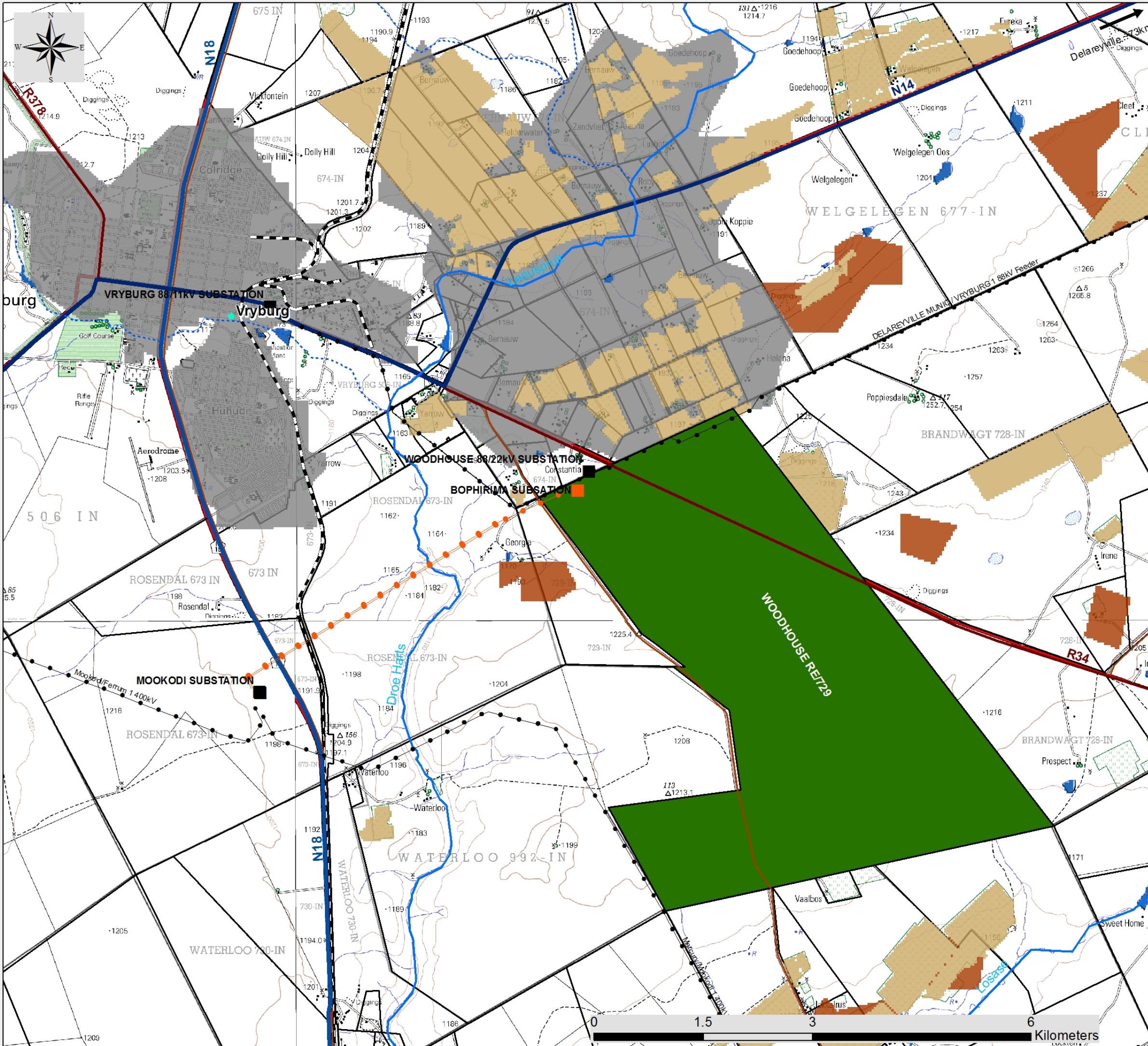
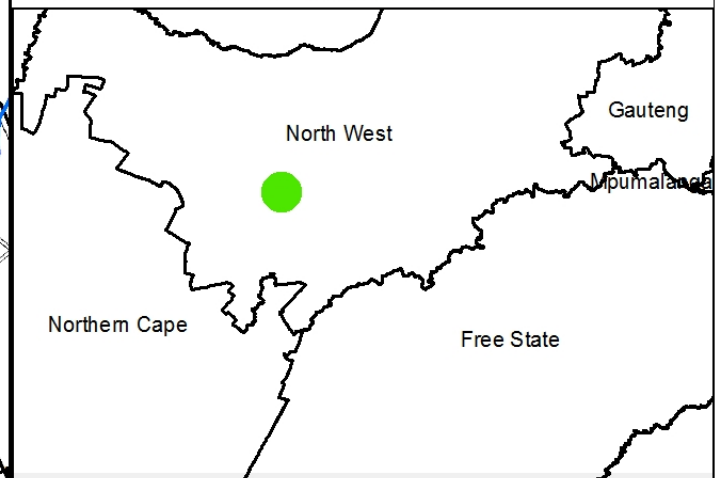
Locality Map

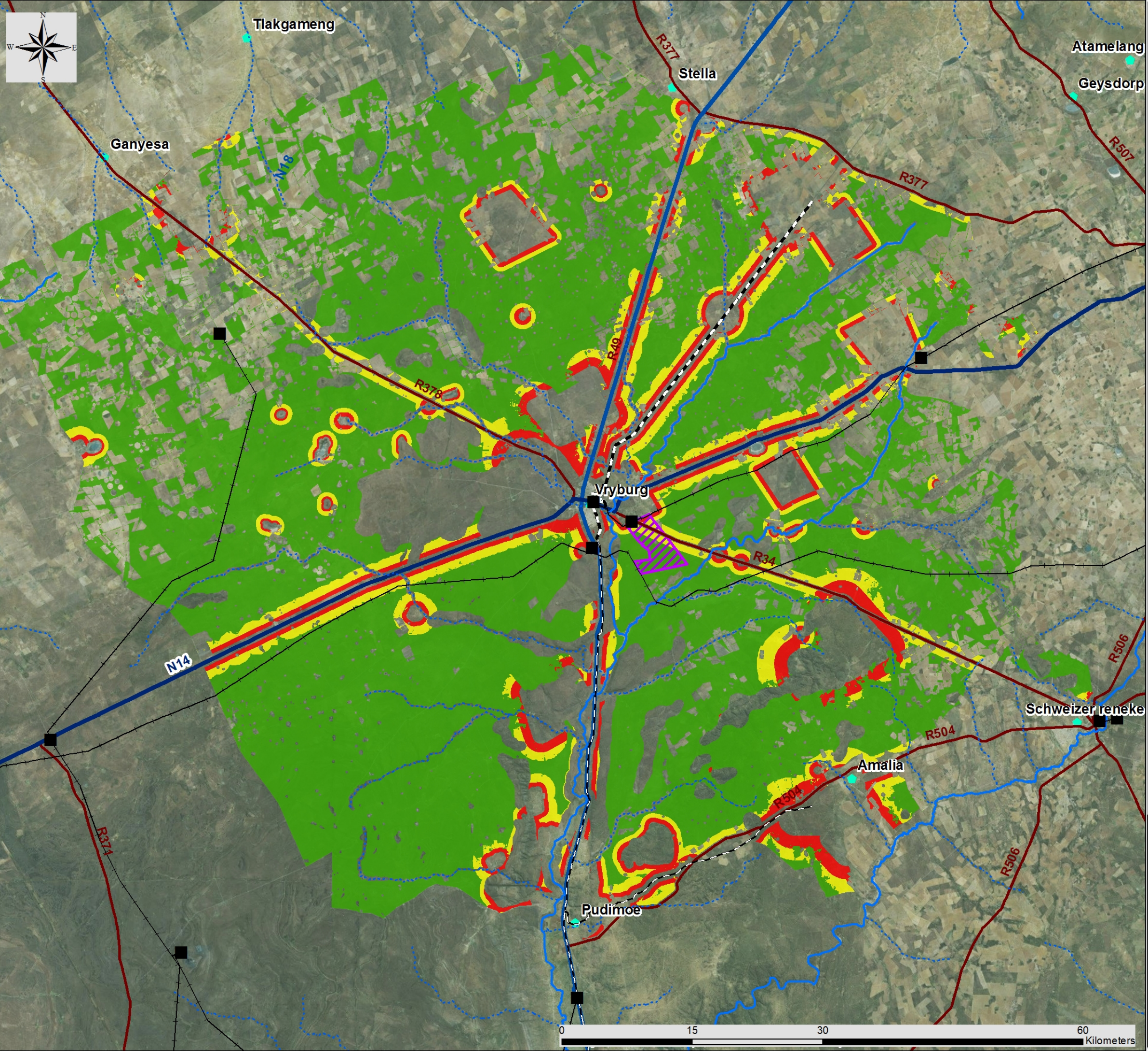
Legend

- Town
 - Eskom substation
 - Authorised Eskom Bophirima Substation (to be constructed)
 - Authorised 132kV Bophirima - Mookodi Power Line (to be constructed)
 - Existing Power Line
 - National route
 - Regional road
 - Main road
 - Railway Line
 - Perennial river
 - Non-perennial river
 - Farm Portions
 - Woodhouse Solar 2 Project Site
- Land use:
- Cultivation
 - Degraded
 - Mines
 - Urban Built-up
 - Waterbodies



Scale: 1:50 000
 Projection: LO25
 Map Ref.: Woodhouse 1&2 - Locality Map 15.04.16





Woodhouse Solar 2 PV Facility, North West Province

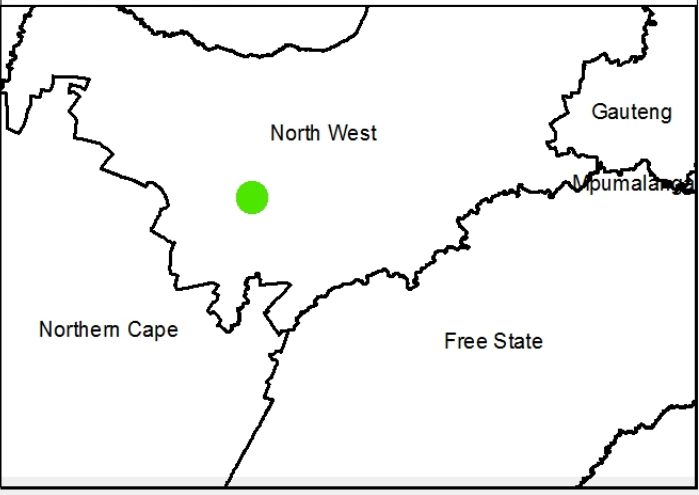
Landscape sensitivity for the proposed
Vryburg REDZ 6 focus area

Legend

- ◆ Town
- Eskom substation
- Existing Power Line
- Railway Line
- Perennial river
- Non-perennial river
- National route
- Regional road
- Woodhouse Solar 2 Project site

Landscape Sensitivity:

- Very High
- High
- Medium
- Low



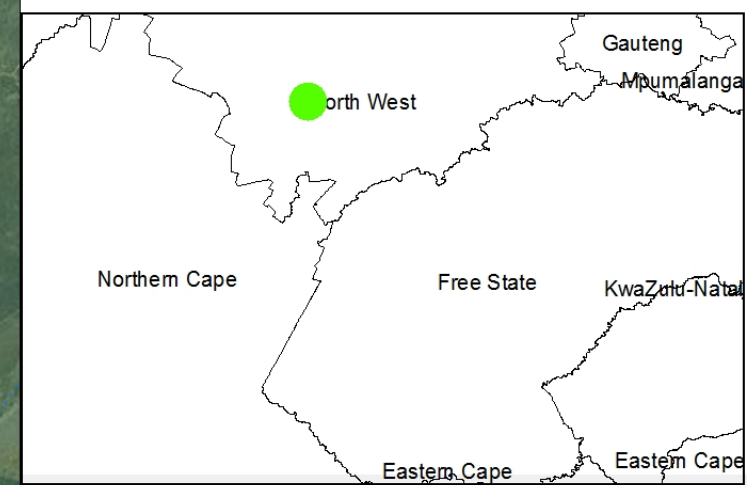
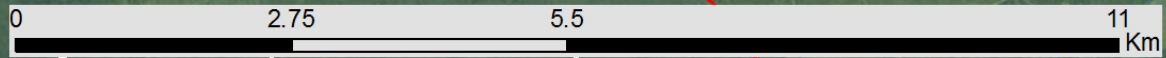
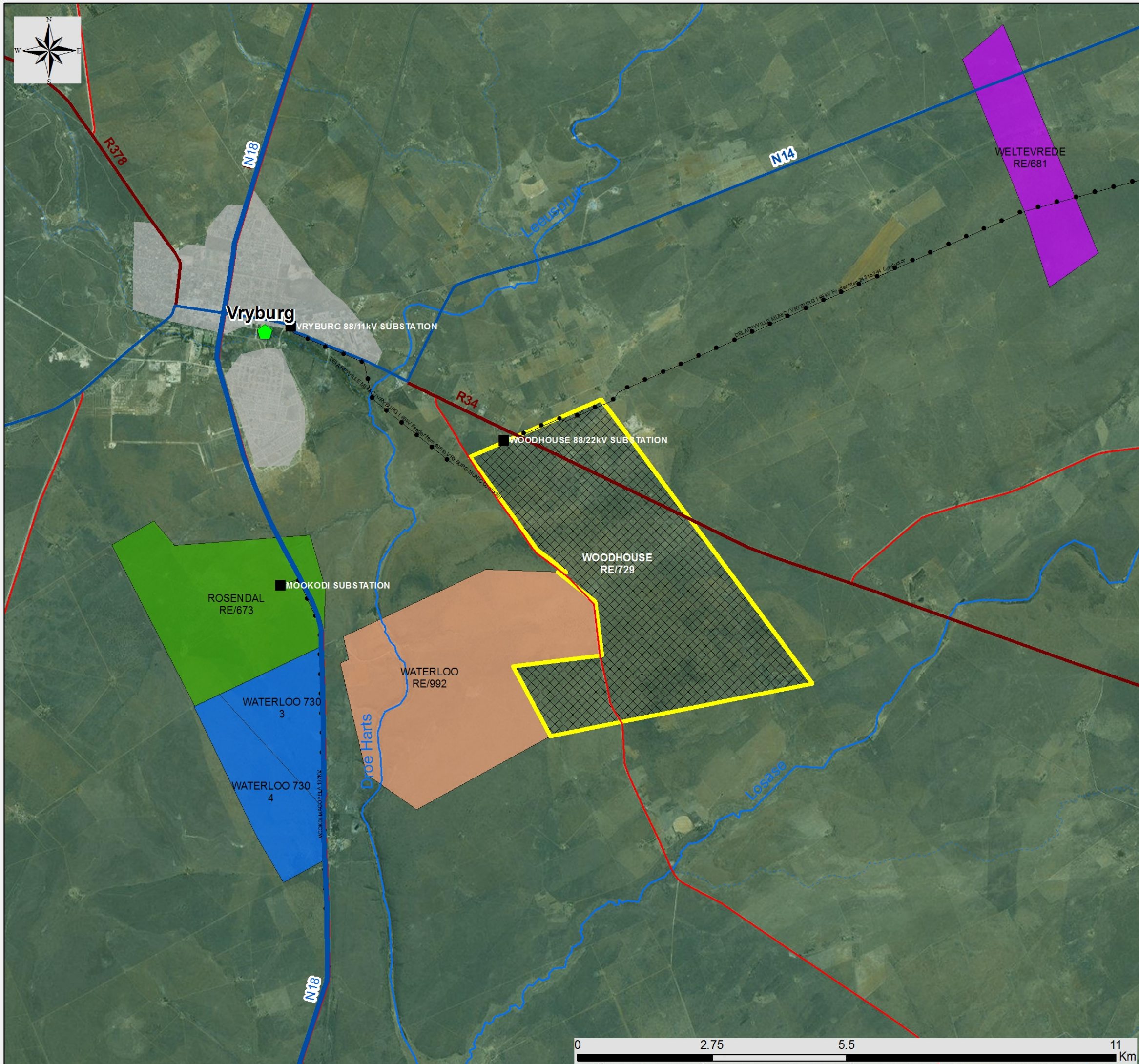


Woodhouse Solar 2 PV Facility, North West Province

(in relation to other solar energy projects in the area)

Legend











- Distribution substation
 - Existing power line
 - - - Railway Line
 - National route
 - Regional road
 - Main road
 - Perennial river
 - - - Non-perennial river
 - Settlements
 - ▨ Woodhouse Solar 2 Project site
- Other solar energy projects:**
- Authorised Carocraft Solar Park
 - Authorised Sediba Solar Energy Facility
 - Authorised Waterloo Solar Park (Preferred Bidder)
 - Authorised Tiger Kloof Solar Energy Facility
 - ▨ Woodhouse Solar 1 PV Facility (Proposed)



Woodhouse Solar 2 PV Facility, North West Province

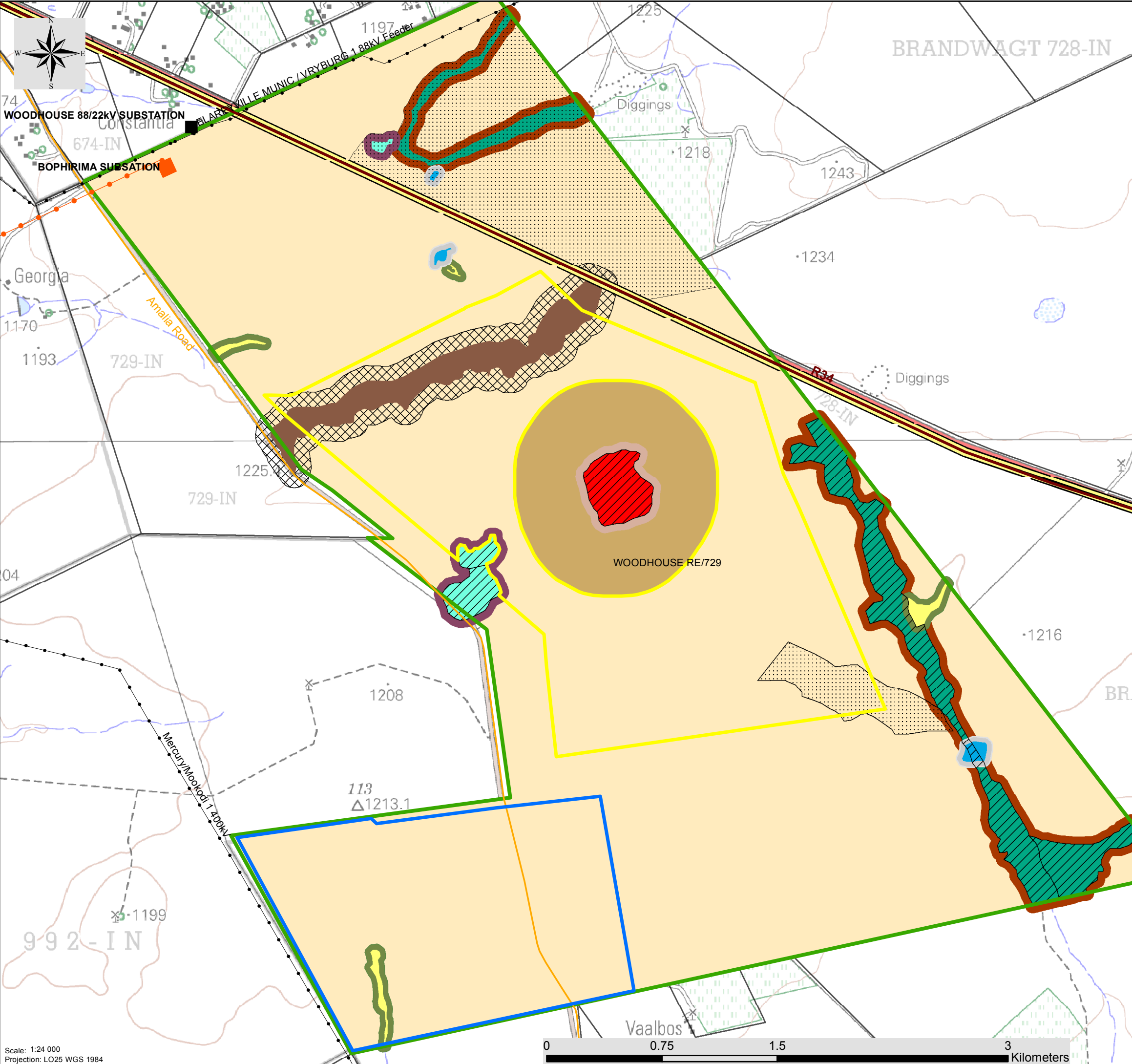
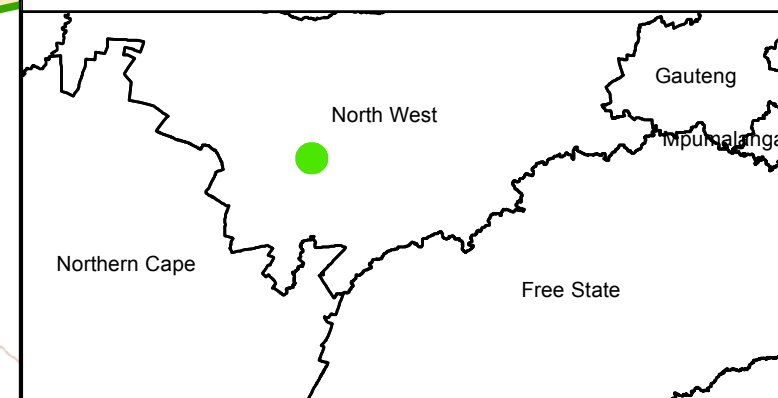
Environmental Sensitivity and Site Alternatives Map

Legend

-  Eskom substation (existing)
-  Existing Power Line
-  Authorised 132kV Bophirima - Mookodi Power Line (to be constructed)
-  Regional road
-  Main road
-  Authorised Eskom Bophirima Substation (to be constructed)
-  Farm Portions
-  Woodhouse Solar 2 Project site
-  Woodhouse Solar 2 Site Alternative 1 - Preferred
-  Woodhouse Solar 2 Site Alternative 2 - Alternative

Environmental Sensitivities:

-  R34 (Visual Receptor)
-  Depression Wetland (Very High Ecological Sensitivity)
-  Depression Wetland 50m Buffer (Very High Ecological Sensitivity)
-  Wetland and Drainage Line (Very High Avifaunal Sensitivity)
-  Artificial Dam and Associated Wetland (High Ecological Sensitivity)
-  Artificial Dam and Associated Wetland 35m Buffer (High Ecological Sensitivity)
-  Wetlands (High Ecological Sensitivity)
-  Wetland 35m Buffer (High Ecological Sensitivity)
-  Ephemeral Tributary (High Ecological Sensitivity)
-  Ephemeral Tributary 35m Buffer (High Ecological Sensitivity)
-  Ephemeral Stream (High Ecological Sensitivity)
-  Ephemeral Stream 50m Buffer (High Ecological Sensitivity)
-  Formally listed ESA (Medium-High Ecological Sensitivity)
-  Ridge (Crest & Upper Slope) (Medium-High Ecological Sensitivity)
-  Ridge (Crest & Upper Slope) 100m Buffer (Medium Avifaunal Sensitivity)
-  Bushveld/Woody Habitat (Medium Avifaunal Sensitivity)
-  Open Kalahari Bushveld (Medium - Low Ecological Sensitivity)



Scale: 1:24 000
 Projection: LO25 WGS 1984
 Map Ref.: Woodhouse 2 - Site Alt. Sens 04.05.16





Woodhouse Solar 2 PV Facility, North West Province

Environmental Sensitivity and Preliminary Layout Map

Legend

- Existing Power Line
- Main road
- Farm Portions
- Woodhouse Solar 2 Project site
- Woodhouse Solar 2 Site Alternative 1 - Preferred

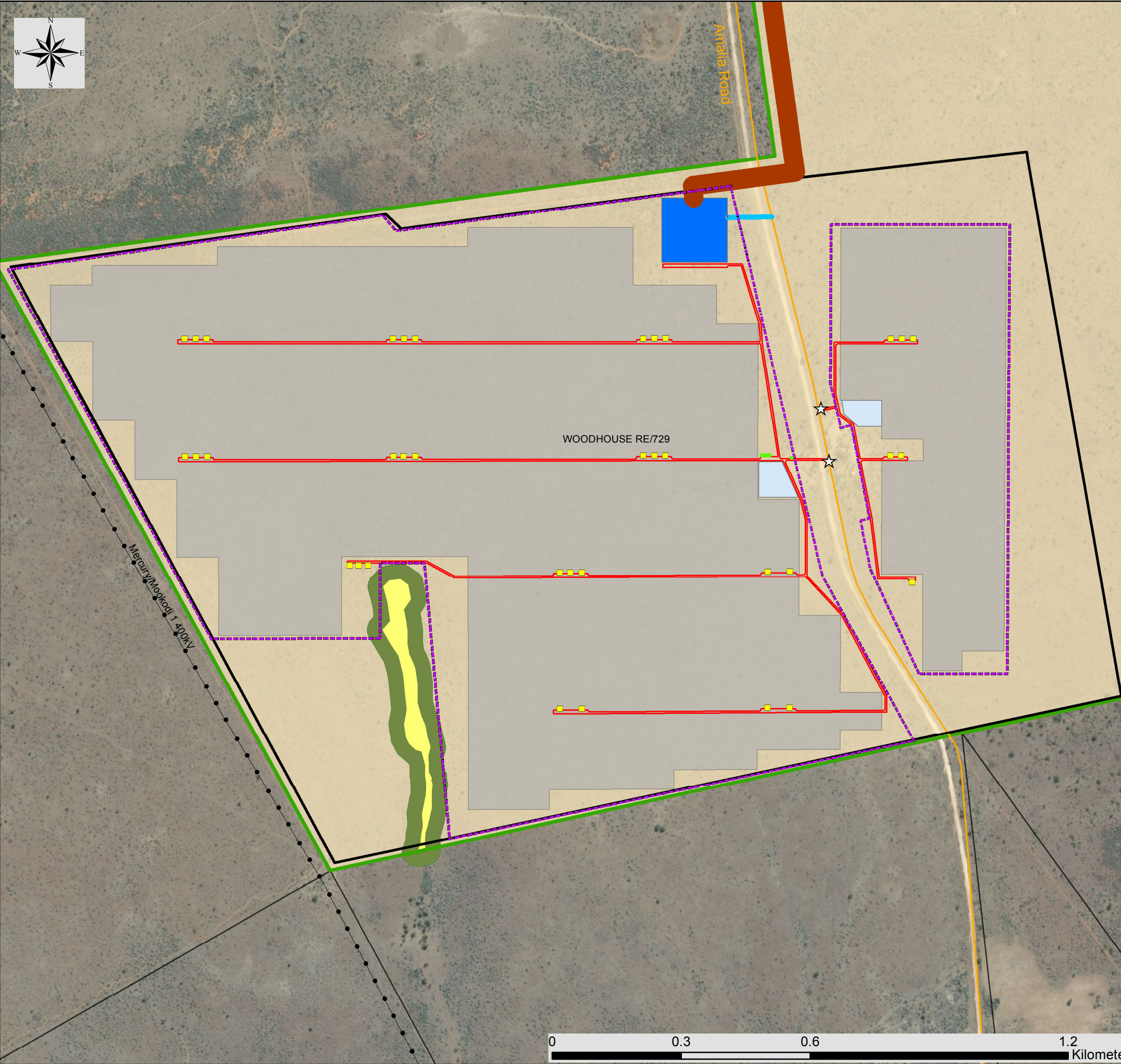
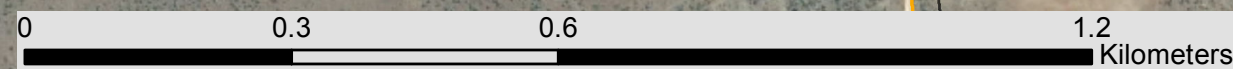
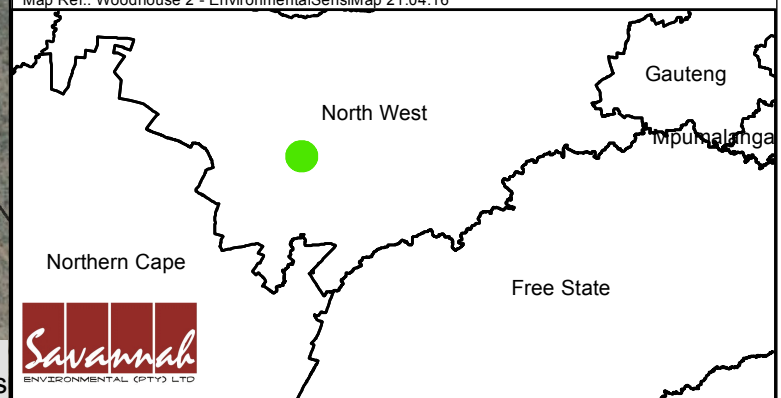
Layout Plan:

- Main Access Point
- Inverter
- Internal Access Roads
- On-site Facility Substation Access road
- Fence
- PV Panel Area
- On-Site Facility Substation
- Permanent Compound Area
- O&M Building, Parking, Septic Tank & Borehole
- Power Line Corridor (100m)

Environmental Sensitivities:

- Ephemeral Tributary (High Ecological Sensitivity)
- Ephemeral Tributary 35m Buffer (High Ecological Sensitivity)
- Open Kalahari Bushveld (Medium - Low Ecological Sensitivity)

Scale: 1:8 500
 Projection: LO25 WGS 1984
 Map Ref.: Woodhouse 2 - EnvironmentalSensiMap 21.04.16





Woodhouse Solar 2 PV Facility, North West Province

Environmental Sensitivity and Optimised Layout Map

Legend

- Existing Power Line
- Main road
- Farm Portions
- ▭ Woodhouse Solar 2 Project site
- ▭ Woodhouse Solar 2 Site Alternative 1 - Preferred

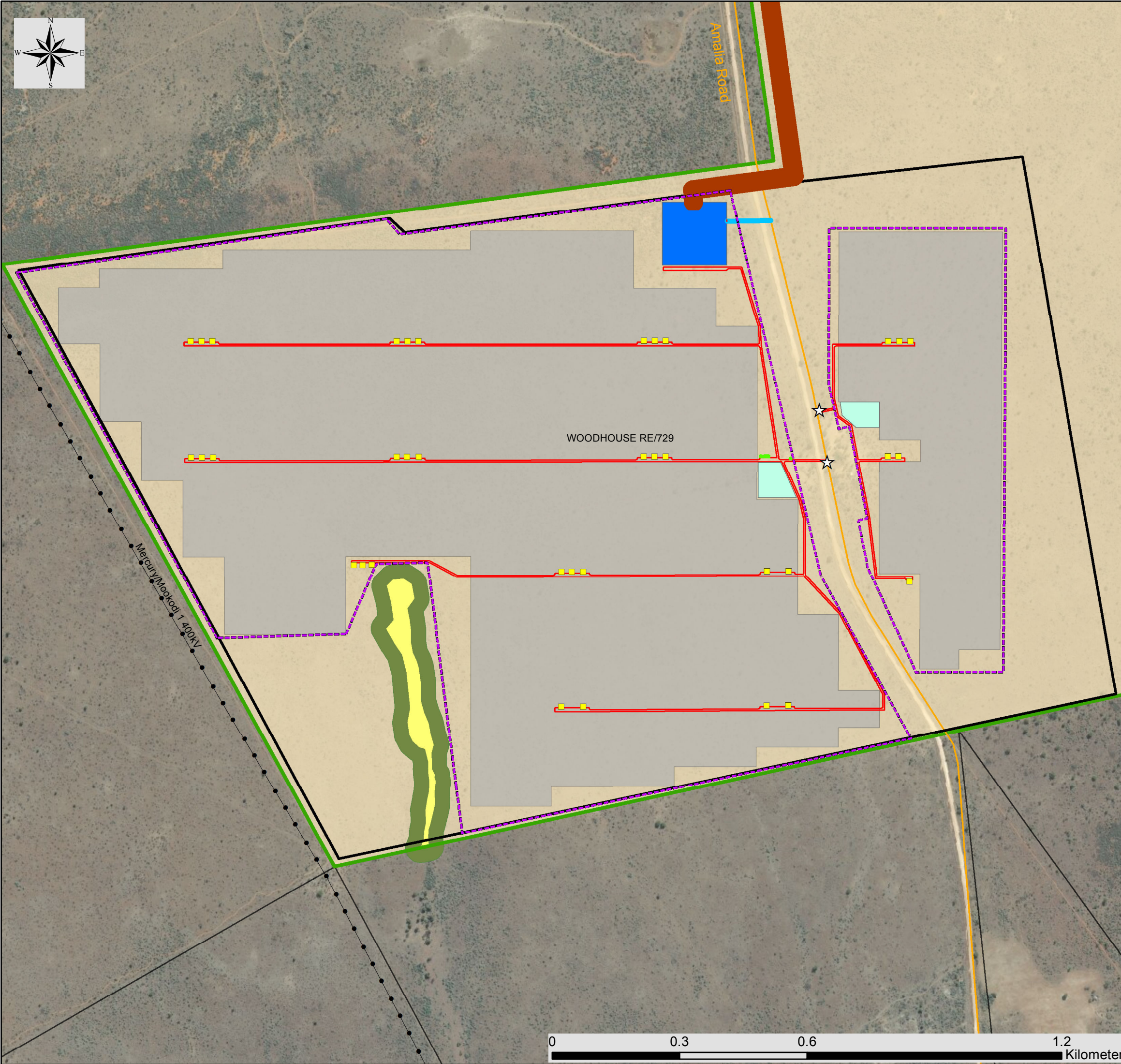
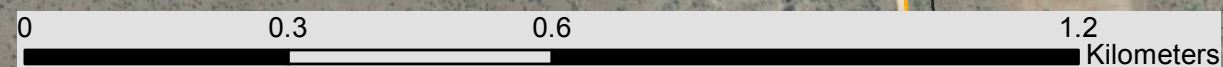
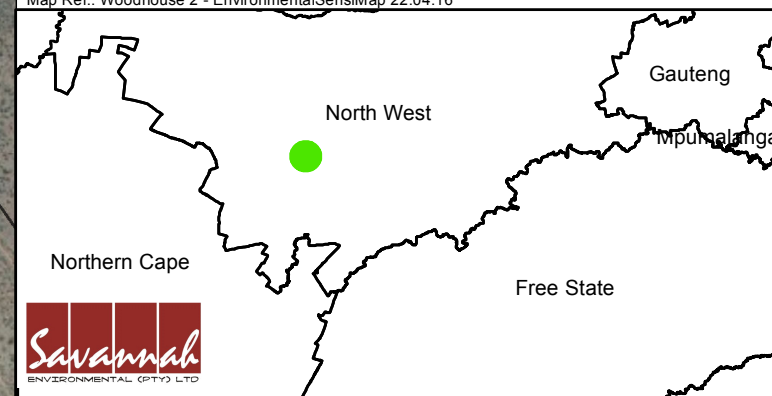
Layout Plan:

- ☆ Main Access Point
- Inverter
- Internal Access Roads
- On-site Facility Substation Access road
- ▭ Facility Fence
- Power Line Corridor (100m)
- PV Panel Area
- On-Site Facility Substation
- Permanent Compound Area
- O&M Building, Parking, Septic Tank & Borehole

Environmental Sensitivities:

- Ephemeral Tributary (High Ecological Sensitivity)
- Ephemeral Tributary 35m Buffer (High Ecological Sensitivity)
- Open Kalahari Bushveld (Medium - Low Ecological Sensitivity)

Scale: 1:8 607
 Projection: LO25 WGS 1984
 Map Ref: Woodhouse 2 - EnvironmentalSensiMap 22.04.16



Woodhouse Solar 2 PV Facility, North West Province

Environmental Sensitivity and Power Line Corridor Map



Legend

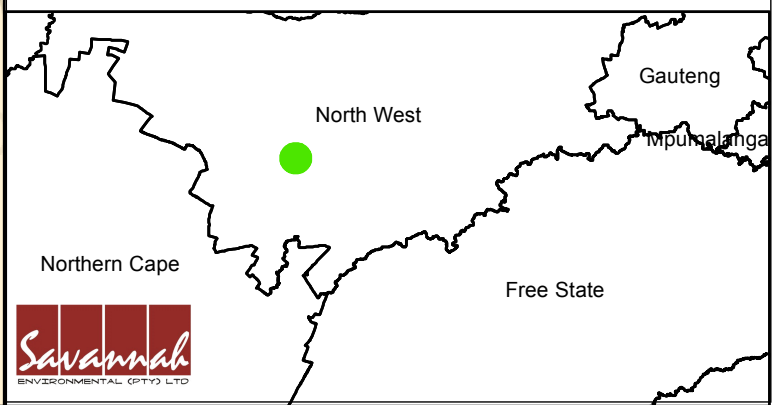
- Eskom substation (existing)
- Existing Power Line
- Authorised 132kV Bophirima - Mookodi Power Line (to be constructed)
- Regional road
- Main road
- Authorised Eskom Bophirima Substation (to be constructed)
- Farm Portions
- Woodhouse Solar 2 Project site
- Woodhouse Solar 2 Site Alternative 1 - Preferred

Layout Plan:

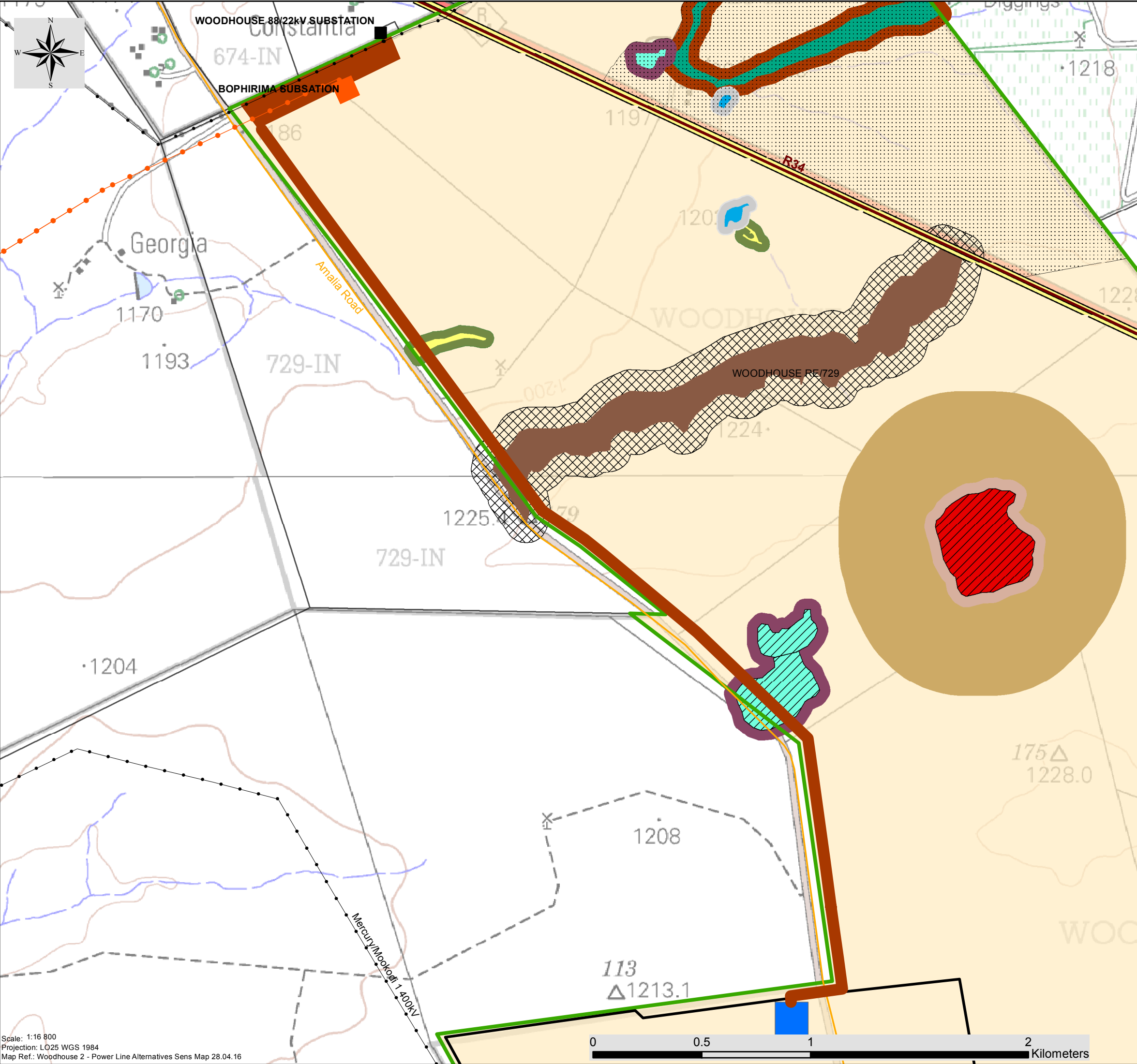
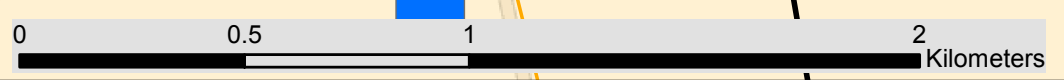
- Power Line Corridor (100m)
- On-Site Facility Substation

Environmental Sensitivities:

- R34 (Visual Receptor)
- Depression Wetland (Very High Avifaunal Sensitivity)
- Depression Wetland (Very High Ecological Sensitivity)
- Depression Wetland 50m Buffer (Very High Ecological Sensitivity)
- Artificial Dam and Associated Wetland (High Ecological Sensitivity)
- Artificial Dam and Associated Wetland 35m Buffer (High Ecological Sensitivity)
- Wetlands (High Ecological Sensitivity)
- Wetland 35m Buffer (High Ecological Sensitivity)
- Ephemeral Tributary (High Ecological Sensitivity)
- Ephemeral Tributary 35m Buffer (High Ecological Sensitivity)
- Ephemeral Stream (High Ecological Sensitivity)
- Ephemeral Stream 50m Buffer (High Ecological Sensitivity)
- Formally listed ESA (Medium-High Ecological Sensitivity)
- Ridge (Crest & Upper Slope) (Medium-High Ecological Sensitivity)
- Ridge (Crest & Upper Slope) 100m Buffer (Medium Avifaunal Sensitivity)
- Bushveld/Woody Habitat (Medium Avifaunal Sensitivity)
- Open Kalahari Bushveld (Medium - Low Ecological Sensitivity)



Scale: 1:16 800
 Projection: LO25 WGS 1984
 Map Ref.: Woodhouse 2 - Power Line Alternatives Sens Map 28.04.16



Woodhouse Solar 2 PV Facility, North West Province

Optimised Layout Map

Legend

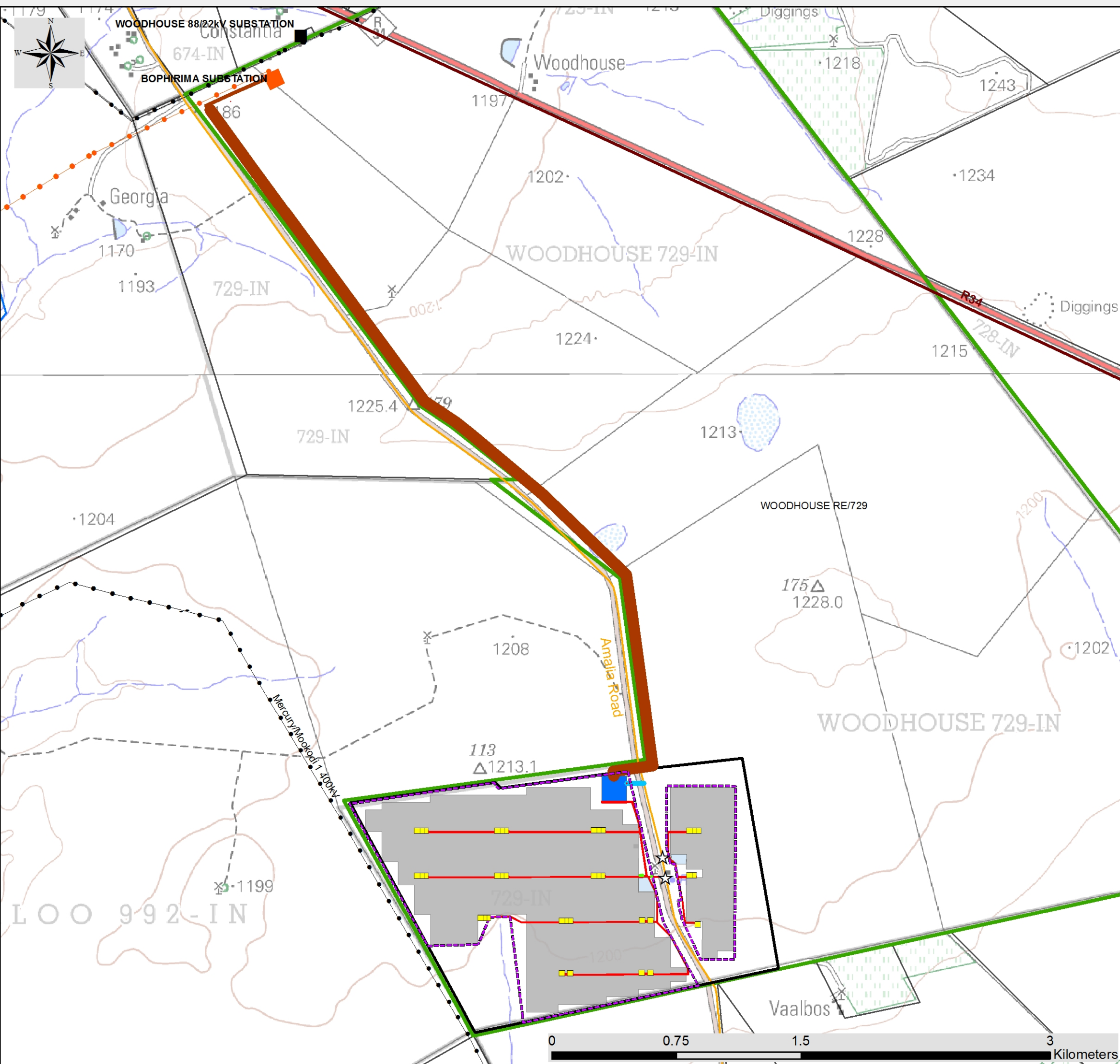
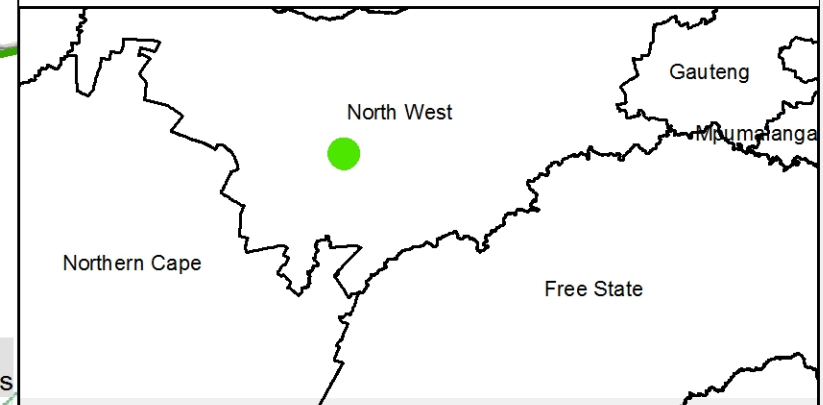
- Eskom substation
- Existing Power Line
- Authorised 132kV Bophirima - Mookodi Power Line (to be constructed)
- Regional road
- Main road
- Authorised Eskom Bophirima Substation (to be constructed)
- Farm Portions
- Woodhouse Solar 2 Project site
- Woodhouse Solar 2 Site Alternative 1 - Preferred

Layout Plan:

- ☆ Main Access Points
- Inverter
- Internal Access Roads
- On-site Facility Substation Access road
- Gird connection - authorised Eskom Bophirima Substation
- Power Line Corridor (100m)
- PV Panel Area
- On-Site Facility Substation
- Facility Fence
- O&M Building, Parking, Septic Tank & Borehole
- Permanent Compound Area



Scale: 1:22 000
Projection: LO25 WGS 1984
Map Ref.: Woodhouse 2 - Layout Map (Optimised) 27.04.16



Woodhouse Solar 2 PV Facility – Coordinates

	Coordinates	
	Latitude (S)	Longitude (E)
Development footprint corner coordinates – Western portion (staring in the north western corner moving clockwise)		
1	27°1'23.682"S	24°47'36.507"E
2	27°1'19.588"S	24°48'08.094"E
3	27°1'20.806"S	24°48'09.291"E
4	27°1'17.416"S	24°48'37.445"E
5	27°1'46.912"S	24°48'45.075"E
6	27°1'59.408"S	24°48'52.83"E
7	27°2'06.599"S	24°48'14.492"E
8	27°1'45.92"S	24°48'11.528"E
9	27°1'45.979"S	24°48'07.161"E
10	27°1'51.348"S	24°48'04.535"E
11	27°1'51.654"S	24°47'53.52"E
Development footprint corner coordinates – Eastern portion (staring in the north western corner moving clockwise)		
1	27°1'20.397"S	24°48'45.915"E
2	27°1'20.382"S	24°49'00.966"E
3	27°1'54.32"S	24°49'00.719"E
4	27°1'54.31"S	24°48'53.193"E
5	27°1'46.396"S	24°48'49.097"E
6	27°1'42.716"S	24°48'48.259"E
7	27°1'42.545"S	24°44'49.104"E
8	27°1'35.528"S	24°48'47.464"E
9	27°1'35.699"S	24°48'46.658"E
10	27°1'32.534"S	24°48'45.818"E
Grid connection alternatives – 100m power line corridor		
Start coordinate (on-site substation)	27°1'18.352"S	24°48'34.286"E
Middle coordinate	27°0'14.527"S	24°48'07.974"E
End coordinate	26°59'07.837"S	24°47'06.152"E