

Woodhouse Solar 1 PV Facility, North West Province

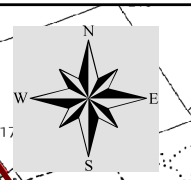
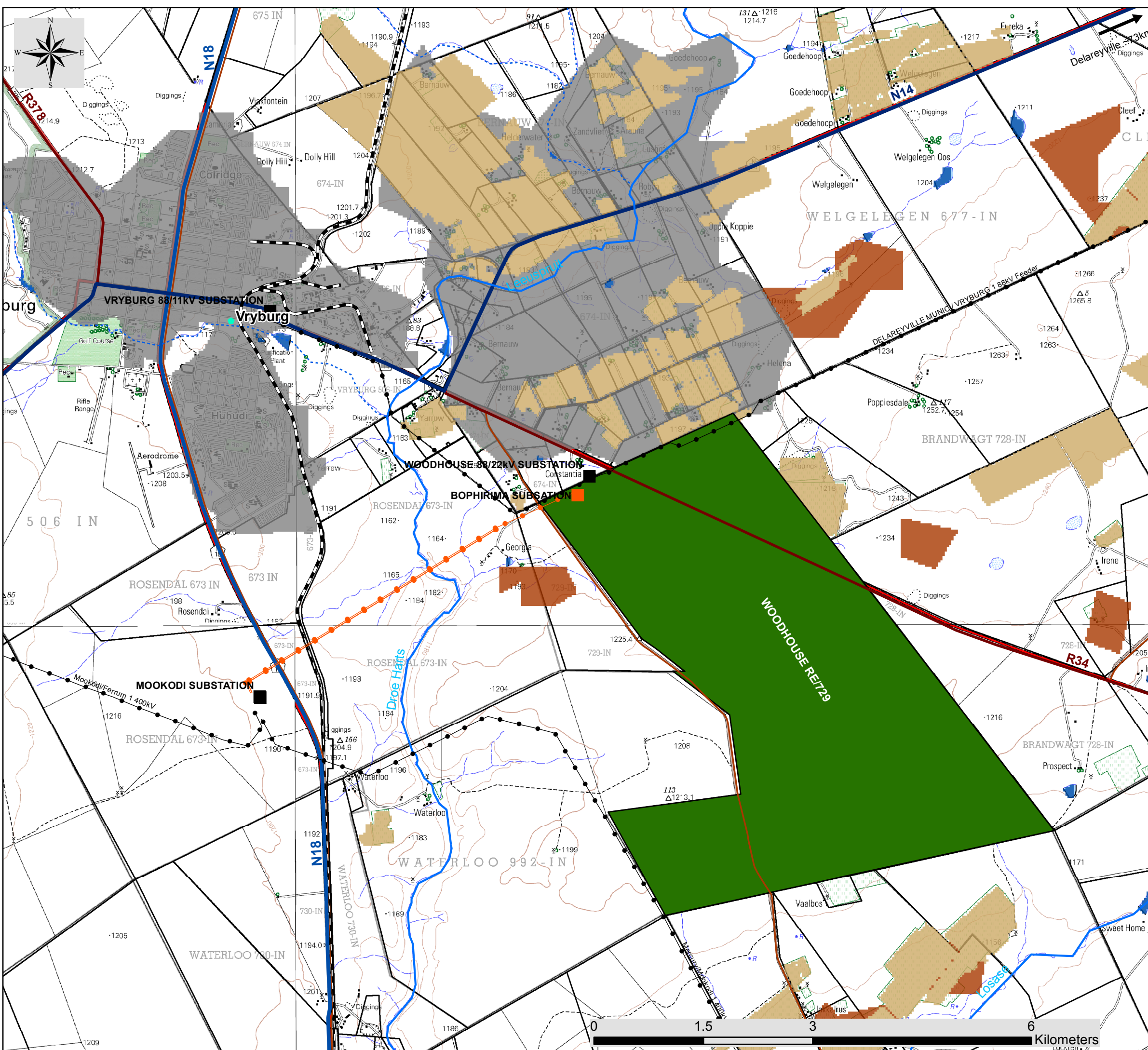
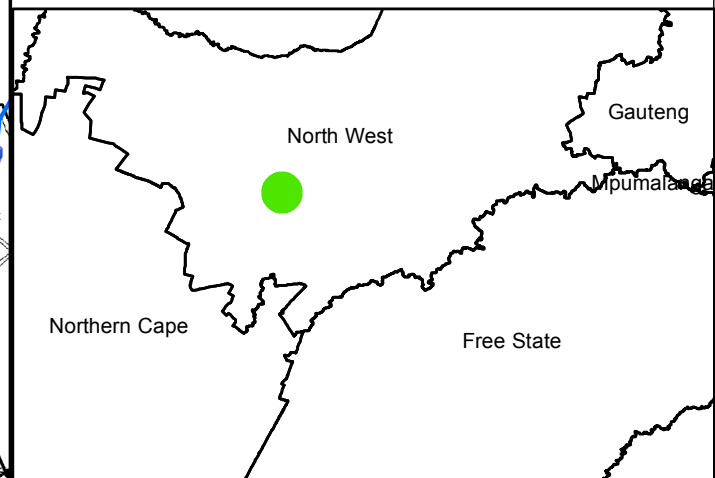
Locality Map

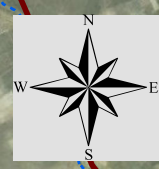
Legend

- Town
 - Eskom substation
 - Authorised Eskom Bophirima Substation (to be constructed)
 - Authorised 132kV Bophirima - Mookodi Power Line (to be constructed)
 - Existing Power Line
 - National route
 - Regional road
 - Main road
 - Railway Line
 - Perennial river
 - Non-perennial river
 - Farm Portions
 - Woodhouse Solar 1 Project Site
- Land use:
- Cultivation
 - Degraded
 - Mines
 - Urban Built-up
 - Waterbodies



Scale: 1:50 000
 Projection: LO25
 Map Ref.: Woodhouse 1&2 - Locality Map 15.04.16





Woodhouse Solar 1 PV Facility, North West Province

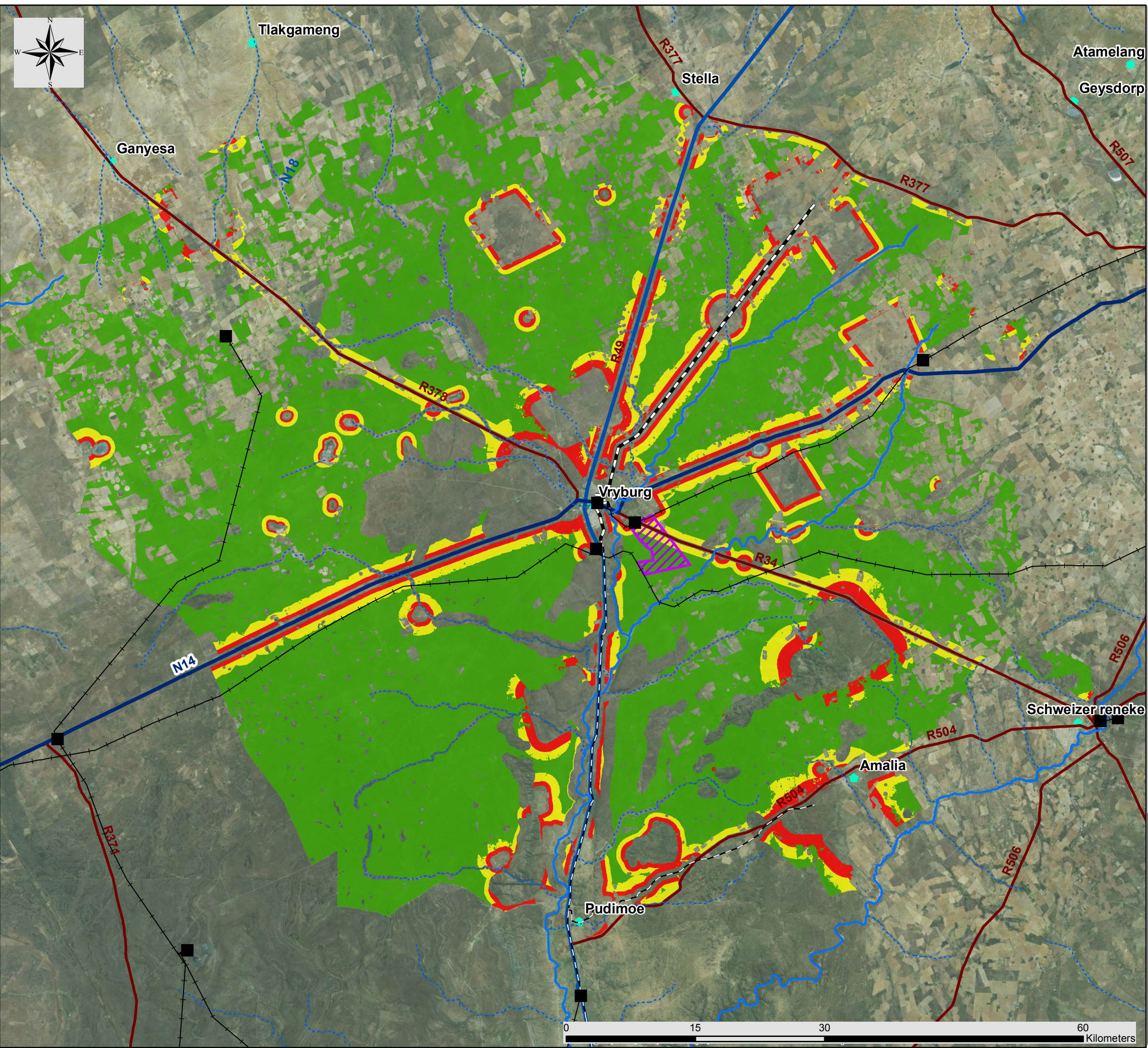
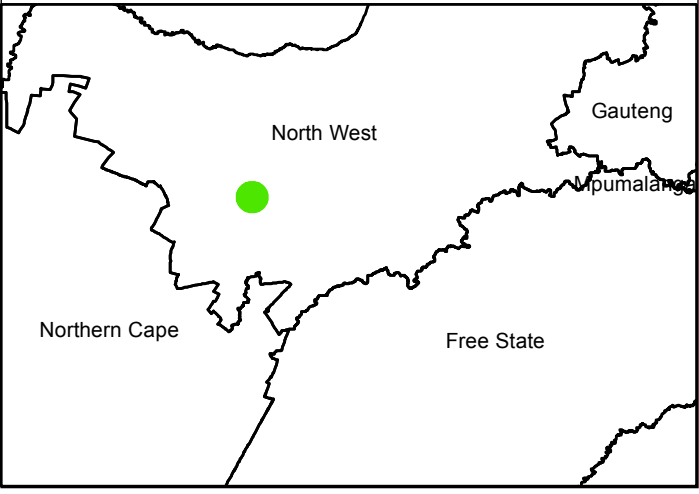
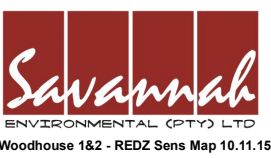
Landscape sensitivity for the proposed Vryburg REDZ 6 focus area

Legend

- Town
- Eskom substation
- Existing Power Line
- Railway Line
- Perennial river
- Non-perennial river
- National route
- Regional road
- Woodhouse Solar 1 Project site

Landscape Sensitivity:

- Very High
- High
- Medium
- Low





Woodhouse Solar 1 PV Facility, North West Province

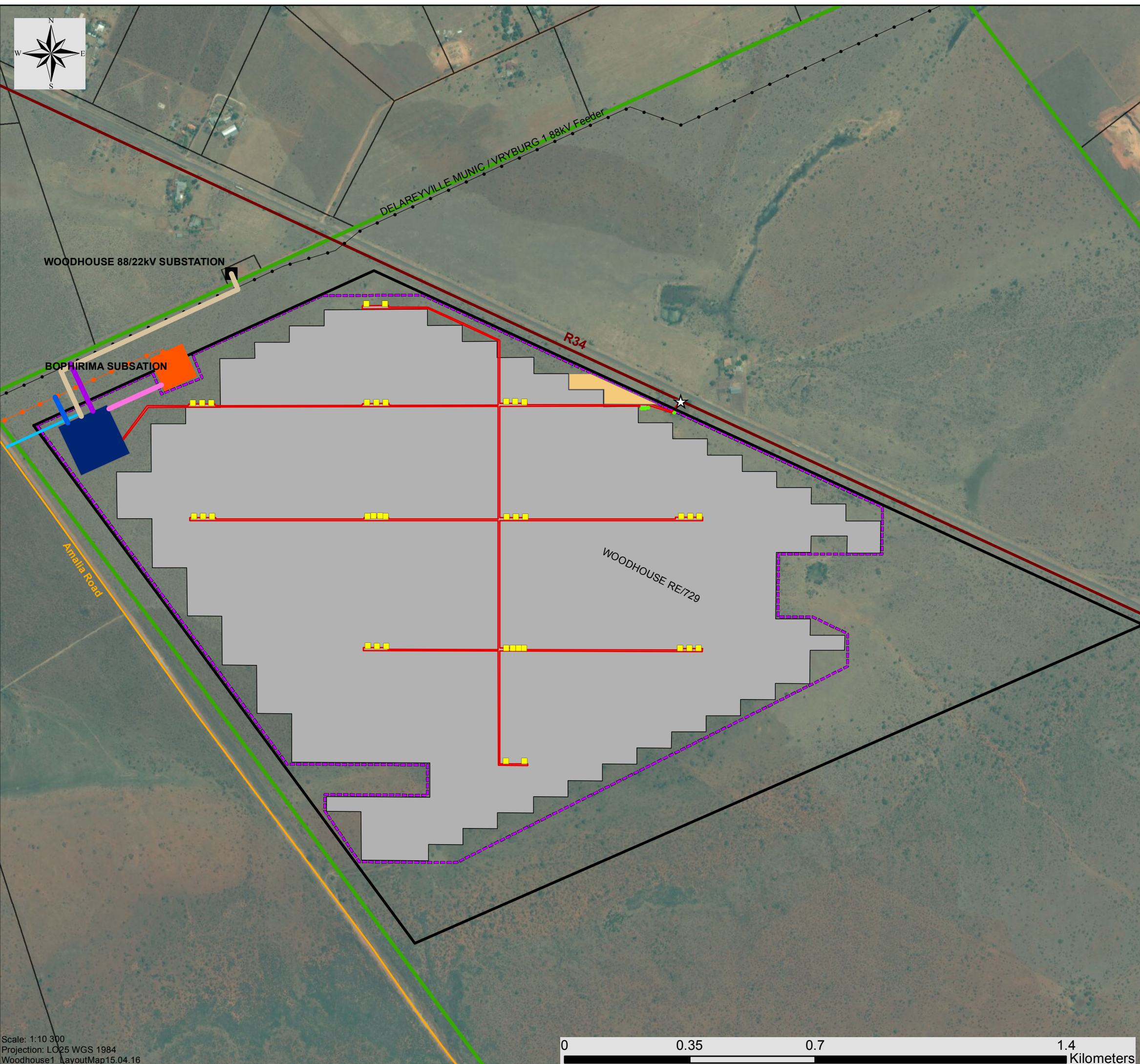
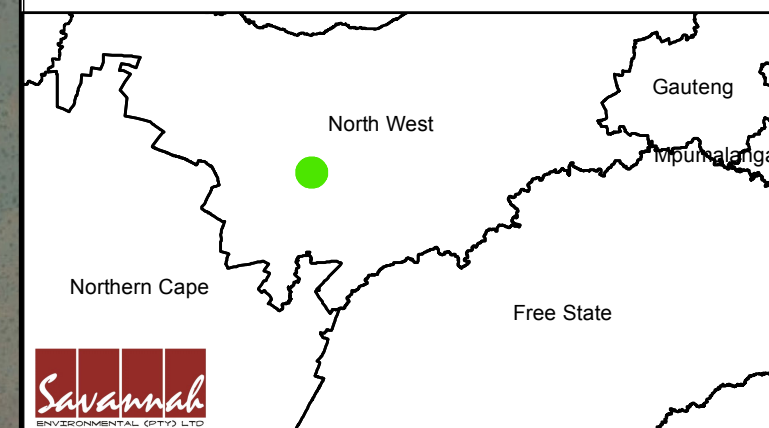
Preliminary Layout Map

Legend

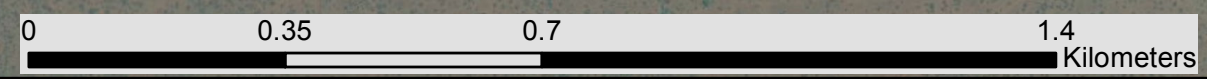
- Eskom substation (existing)
- Existing Power Line
- National route
- Regional road
- Main road
- Authorised 132kV Bophirima Power Line (to be constructed)
- Authorised Eskom Bophirima Substation (to be constructed)
- Woodhouse Solar 1 Development Area
- Woodhouse Solar 1 Project site
- Farm Portions

Layout Plan:

- Main Acces Point
- Inverter
- Internal Access Roads
- On-site Facility Substation Access Road
- Power Line Alternative 1
- Power Line Alternative 2
- Power Line Alternative 3
- Power Line Alternative 4
- O&M Building, Parking, Septic Tank & Borehole
- Permanent Compound Area
- Facility Fence
- On-site Facility Substation
- PV Panels



Scale: 1:10 300
Projection: LO25 WGS 1984
Woodhouse1_layoutMap15.04.16



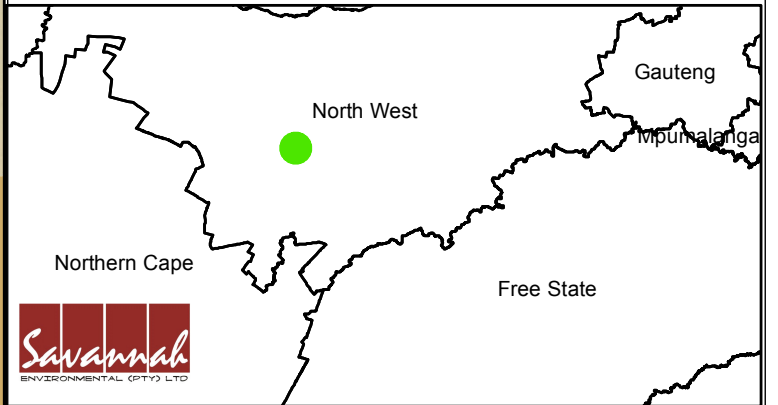
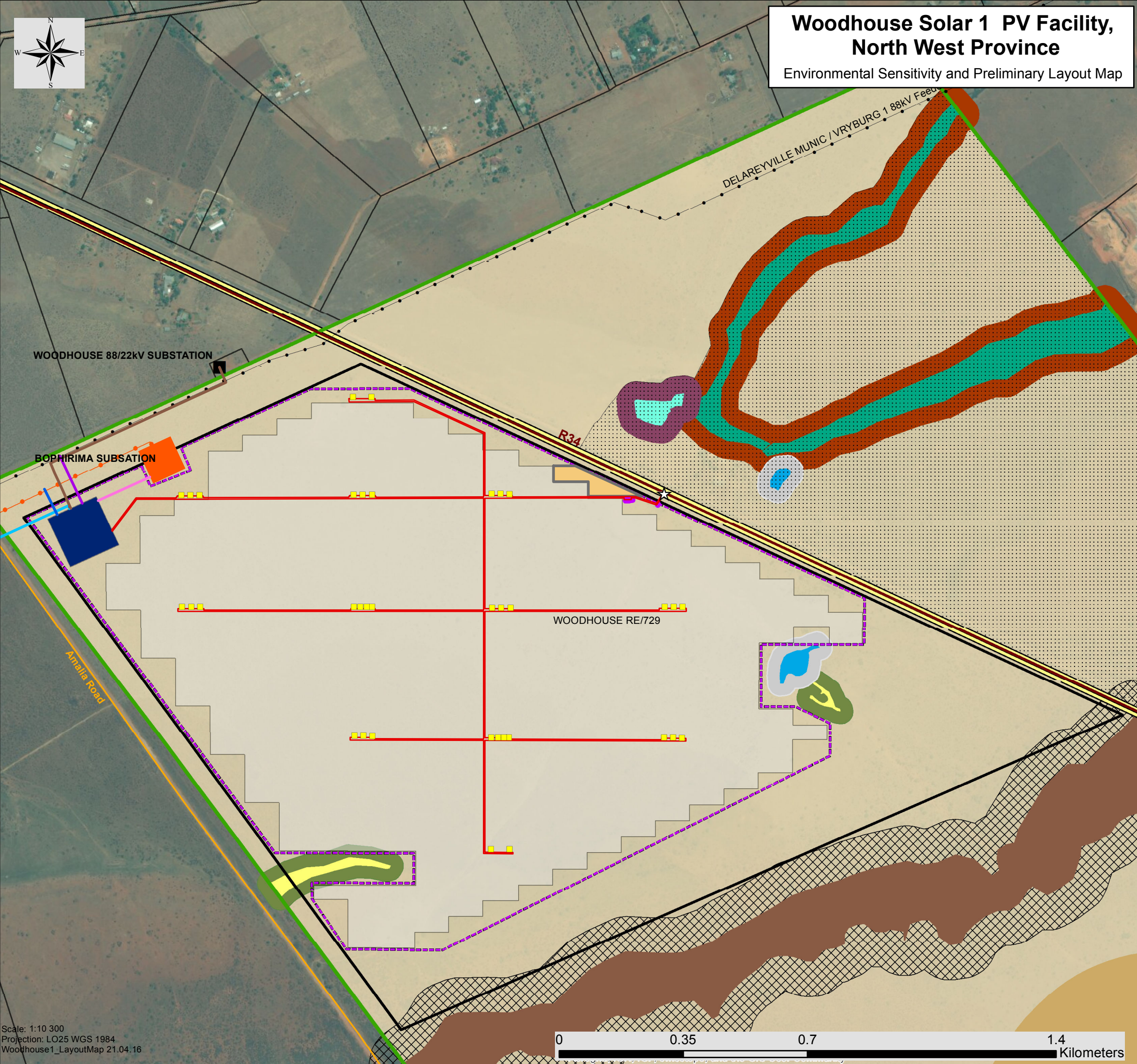


Woodhouse Solar 1 PV Facility, North West Province

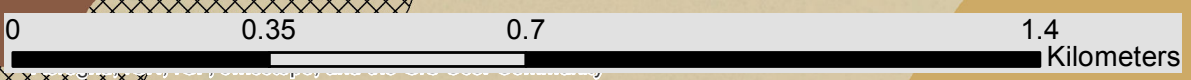
Environmental Sensitivity and Preliminary Layout Map

Legend

- Eskom substation (existing)
 - Existing Power Line
 - National route
 - Regional road
 - Main road
 - Authorised 132kV Bophirima Power Line (to be constructed)
 - Authorised Eskom Bophirima Substation (to be constructed)
 - Woodhouse Solar 1 Development Area
 - Woodhouse Solar 1 Project site
 - Farm Portions
- ### Layout Plan:
- ★ Main Acces Point
 - Inverter
 - Power Line Alternative 1
 - Power Line Alternative 2
 - Power Line Alternative 3
 - Power Line Alternative 4
 - Internal Access Roads
 - On-site Facility Substation Access Road
 - O&M Building, Parking, Septic Tank & Borehole
 - Permanent Compound Area
 - Facility Fence
 - On-site Facility Substation
 - PV Panel Area
- ### Environmental Sensitivities:
- R34 (Visual Receptor)
 - Artificial Dam and Associated Wetland (High Ecological Sensitivity)
 - Artificial Dam and Associated Wetland 35m Buffer (High Ecological Sensitivity)
 - Wetlands (High Ecological Sensitivity)
 - Wetland 35m Buffer (High Ecological Sensitivity)
 - Ephemeral Tributary (High Ecological Sensitivity)
 - Ephemeral Tributary 35m Buffer (High Ecological Sensitivity)
 - Ephemeral Stream (High Ecological Sensitivity)
 - Ephemeral Stream 50m Buffer (High Ecological Sensitivity)
 - Formally listed ESA (Medium-High Ecological Sensitivity)
 - Ridge (Crest & Upper Slope) (Medium-High Ecological Sensitivity)
 - Open Kalahari Bushveld (Medium - Low Ecological Sensitivity)
 - Bushveld/Woody Habitat (Medium Avifaunal Sensitivity)
 - Ridge (Crest & Upper Slope) 100m Buffer (Medium Avifaunal Sensitivity)



Scale: 1:10 300
Projection: LO25 WGS 1984
Woodhouse1_LayoutMap 21.04.16





Woodhouse Solar 1 PV Facility, North West Province

Optimised Layout Map

Legend

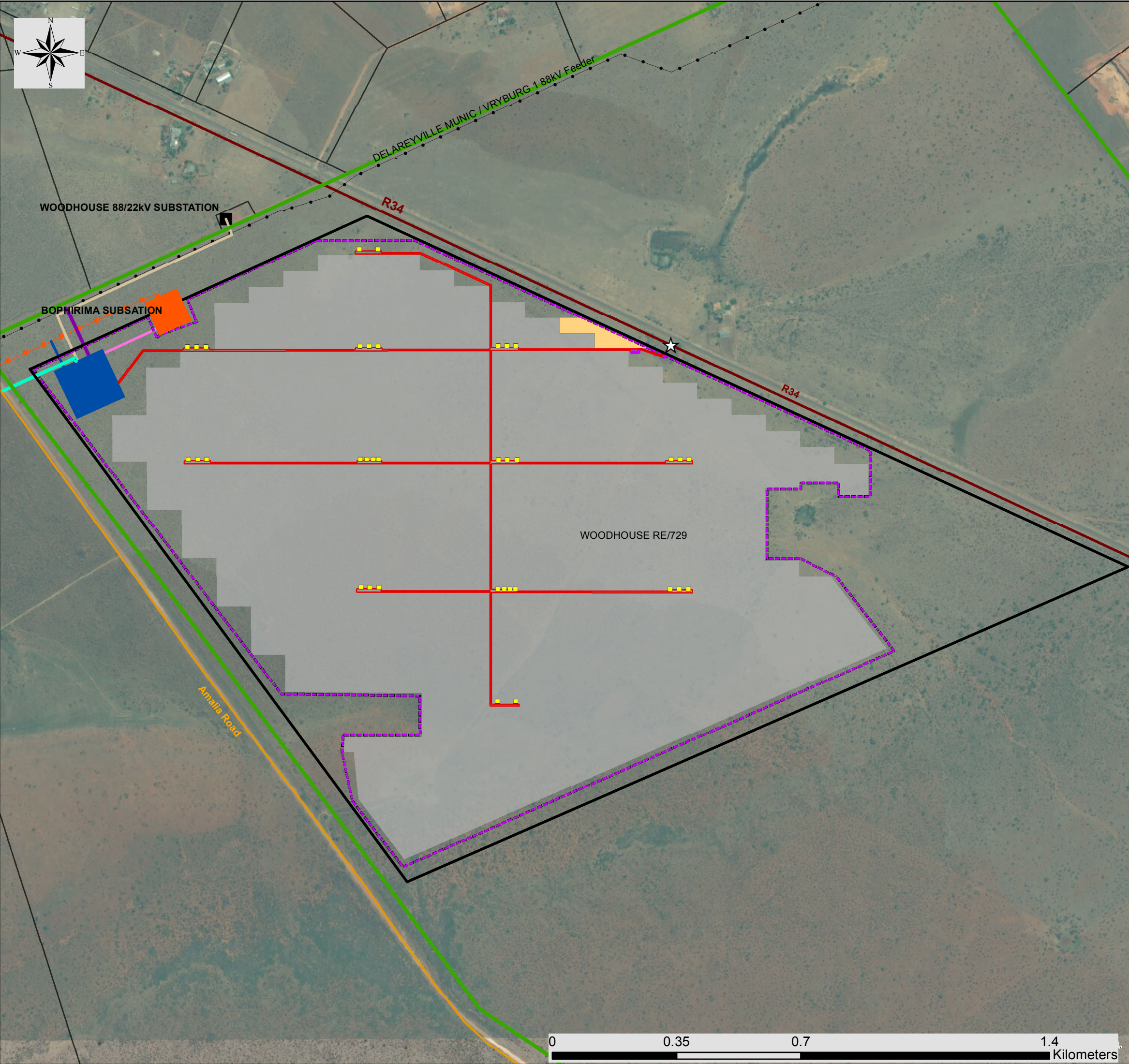
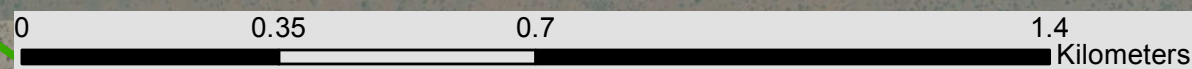
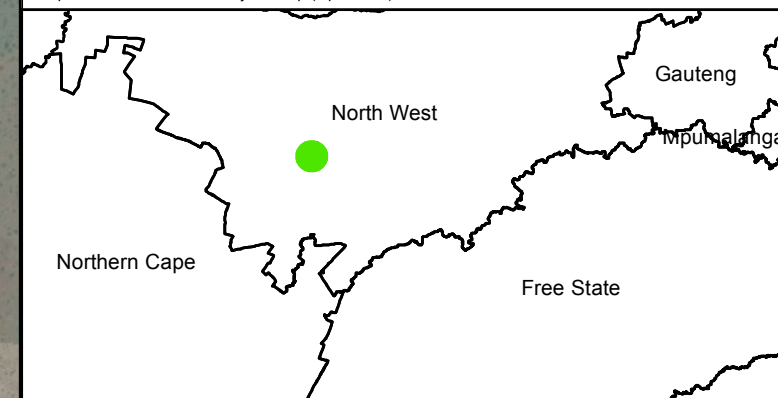
- Eskom substation (existing)
- Existing Power Line
- Regional road
- Main road (Amalia Road)
- Authorised 132kV Bophirima - Mookodi Power Line (to be constructed)
- Authorised Eskom Bophirima Substation (to be constructed)
- Farm Portions
- Woodhouse Solar 1 Project site
- Woodhouse Solar 1 Development Area

Layout Plan:

- ☆ Main Access Point
- Inverter
- Internal Access Roads
- On-site Facility Substation Access Road
- Facility Fence
- Power Line Alternative 1
- Power Line Alternative 2
- Power Line Alternative 3
- Power Line Alternative 4
- On-site Facility Substation
- PV Panel Area
- Permanent Compound Area
- O&M Building, Parking, Septic Tank & Borehole



Scale: 1:10 300
Projection: LO25 WGS 1984
Map Ref.: Woodhouse 1 - Layout Map (Optimised) 27.04.16



Woodhouse Solar 1 PV Facility, North West Province

Environmental Sensitivity and Optimised Layout Map



Legend

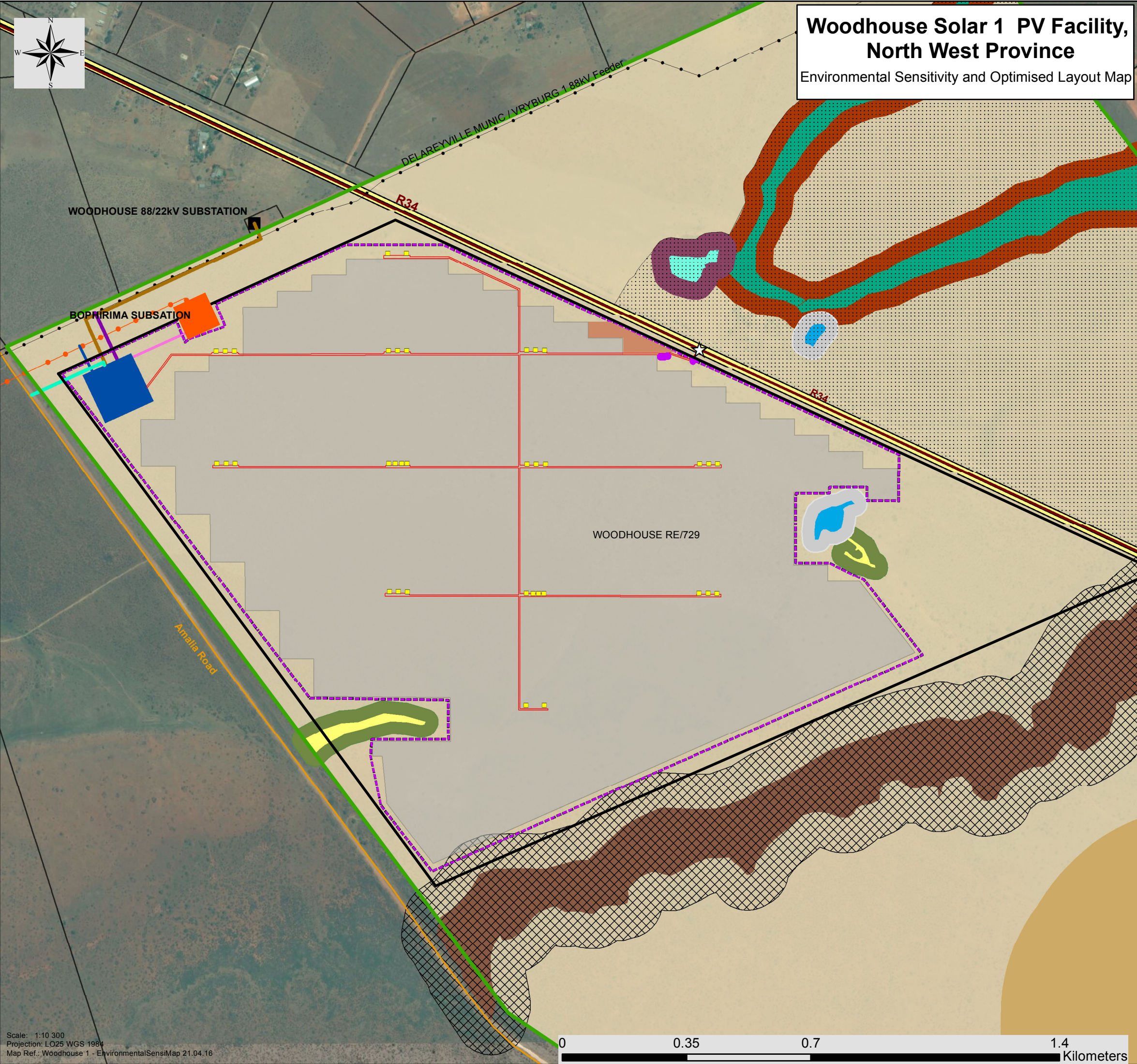
- Eskom substation (existing)
- Existing Power Line
- Regional road
- Main road
- Authorised 132kV Bophirima - Mookodi Power Line (to be constructed)
- Authorised Eskom Bophirima Substation (to be constructed)
- Woodhouse Solar 1 Project site
- Woodhouse Solar 1 Development Area
- Farm Portions

Layout Plan:

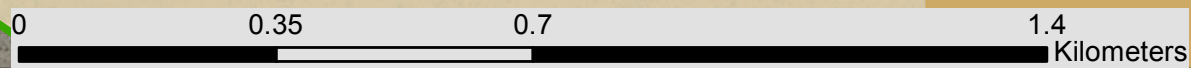
- Inverter
- ★ Main Access Point
- Internal Access Roads
- On-site Facility Substation Access Road
- Facility Fence
- Power Line Alternative 1
- Power Line Alternative 2
- Power Line Alternative 3
- Power Line Alternative 4
- On-site Facility Substation
- PV Panel Area
- Permanent Compound Area
- O&M Building, Parking, Septic Tank & Borehole

Environmental Sensitivities:

- R34 (Visual Receptor)
- Artificial Dam and Associated Wetland (High Ecological Sensitivity)
- Artificial Dam and Associated Wetland 35m Buffer (High Ecological Sensitivity)
- Wetlands (High Ecological Sensitivity)
- Wetland 35m Buffer (High Ecological Sensitivity)
- Ephemeral Tributary (High Ecological Sensitivity)
- Ephemeral Tributary 35m Buffer (High Ecological Sensitivity)
- Ephemeral Stream (High Ecological Sensitivity)
- Ephemeral Stream 50m Buffer (High Ecological Sensitivity)
- Formally listed ESA (Medium-High Ecological Sensitivity)
- Ridge (Crest & Upper Slope) (Medium-High Ecological Sensitivity)
- Open Kalahari Bushveld (Medium - Low Ecological Sensitivity)
- Bushveld/Woody Habitat (Medium Avifaunal Sensitivity)
- Ridge (Crest & Upper Slope) 100m Buffer (Medium Avifaunal Sensitivity)



Scale: 1:10 300
 Projection: LO25 WGS 1984
 Map Ref.: Woodhouse 1 - EnvironmentalSensiMap 21.04.16





Woodhouse Solar 1 PV Facility, North West Province

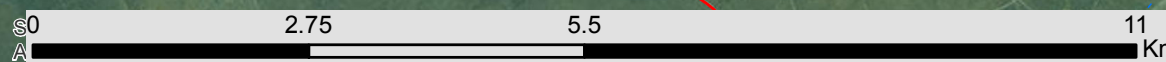
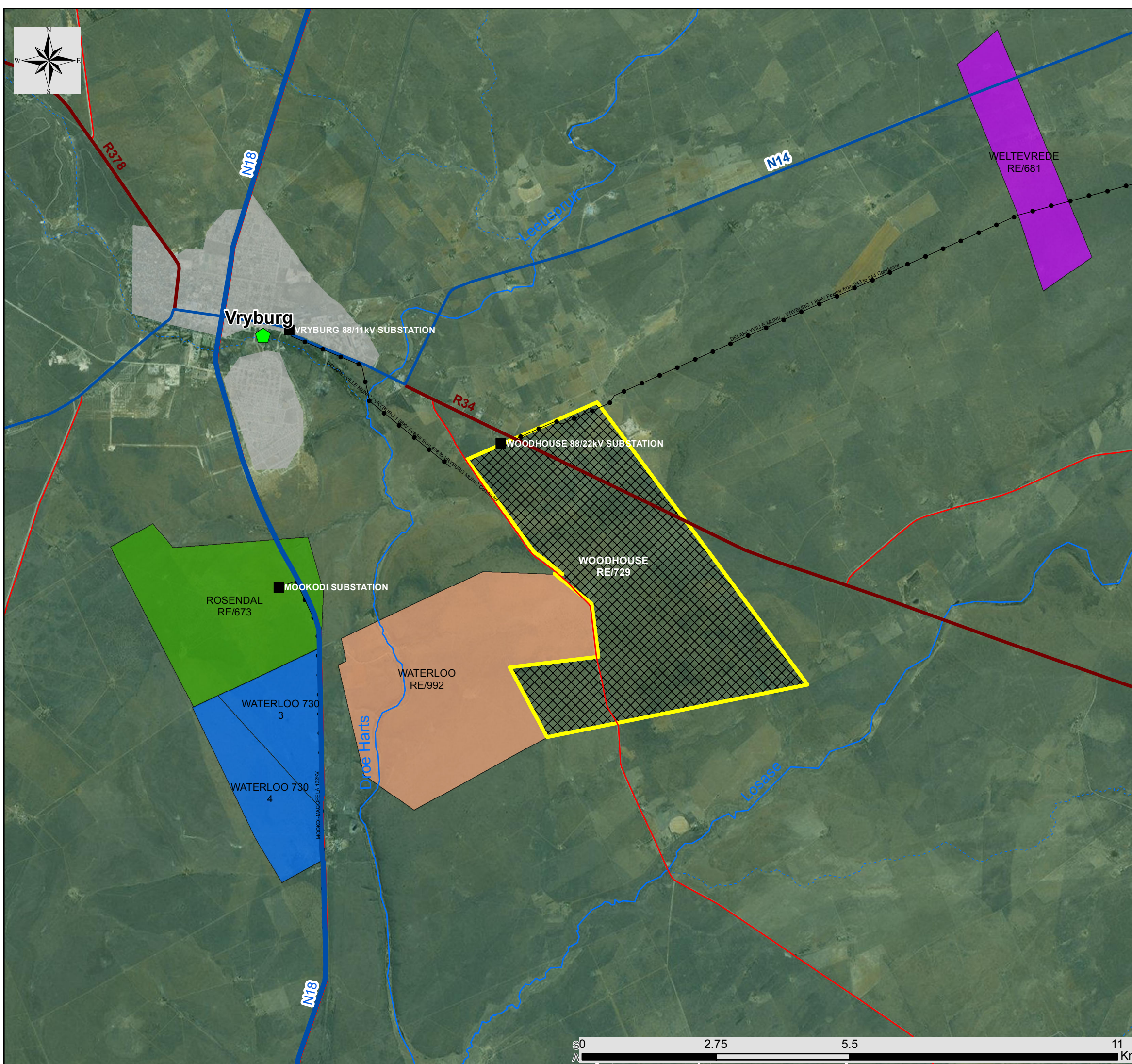
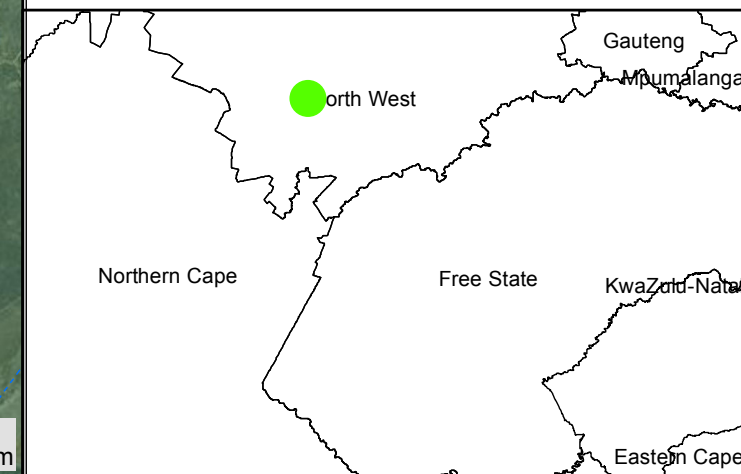
(in relation to other solar energy projects in the area)

Legend

- Distribution substation
- Existing power line
- +— Railway Line
- National route
- Regional road
- Main road
- Perennial river
- - - Non-perennial river
- Settlements
- ▨ Woodhouse Solar 1 Project site

Other solar energy projects:

- Authorised Carocraft Solar Park
- Authorised Sediba Solar Energy Facility
- Authorised Waterloo Solar Park (Preferred Bidder)
- Authorised Tiger Kloof Solar Energy Facility
- ▨ Woodhouse Solar 2 PV Facility (Proposed)



Woodhouse Solar 1 PV Facility – Coordinates

	Coordinates	
	Latitude (S)	Longitude (E)
Development footprint corner coordinates (starting in the north western corner moving clockwise)		
1	26°59'7.28"S	24°47'6.52"E
2	26°59'2.51"S	24°47'18.22"E
3	26°59'4.38"S	24°47'19.15"E
4	26°59'2.92"S	24°47'23.23"E
5	26°59'0.89"S	24°47'22.30"E
6	26°58'55.50"S	24°47'35.33"E
7	26°58'55.48"S	24°47'45.53"E
8	26°59'14.78"S	24°48'32.01"E
9	26°59'18.78"S	24°48'31.92"E
10	26°59'18.95"S	24°48'28.74"E
11	26°59'17.74"S	24°48'28.70"E
12	26°59'17.76"S	24°48'28.86"E
13	26°59'18.27"S	24°48'24.85"E
14	26°59'18.29"S	24°48'21.46"E
15	26°59'24.67"S	24°48'21.41"E
16	26°59'24.67"S	24°48'24.92"E
17	26°59'26.28"S	24°48'28.38"E
18	26°59'33.1"S	24°48'34.35"E
19	26°59'52.82"S	24°47'44.19"E
20	26°59'46.81"S	24°47'39.02"E
21	26°59'42.18"S	24°47'37.91"E
22	26°59'40.77"S	24°47'38.09"E
23	26°59'40.76"S	24°47'45.95"E
24	26°59'37.19"S	24°47'45.91"E
25	26°59'37"S	24°47'31.83"E
Grid connection (power line) alternatives		
Alternative 1 (preferred)		
Start (on-site substation)	26°59'5.73"S	24°47'13.78"E
Middle	26°59'4.64"S	24°47'16.45"E
End	26°59'3.62"S	24°47'19.13"E
Alternative 2		
Start (on-site substation)	26°59'6.49"S	24°47'11.05"E
Middle	26°58'59.24"S	24°47'16.38"E
End	26°58'53.53"S	24°47'26.19"E
Alternative 3		
Start (on-site substation)	26°59'5.96"S	24°47'12.19"E
Middle	26°59'3.74"S	24°47'11.05"E
End	26°59'1.68"S	24°47'9.87"E
Alternative 4		
Start (on-site substation)	26°59'7.05"S	24°47'9.64"E
Middle	26°59'5.88"S	24°47'9.04"E
End	26°59'4.68"S	24°47'8.38"E