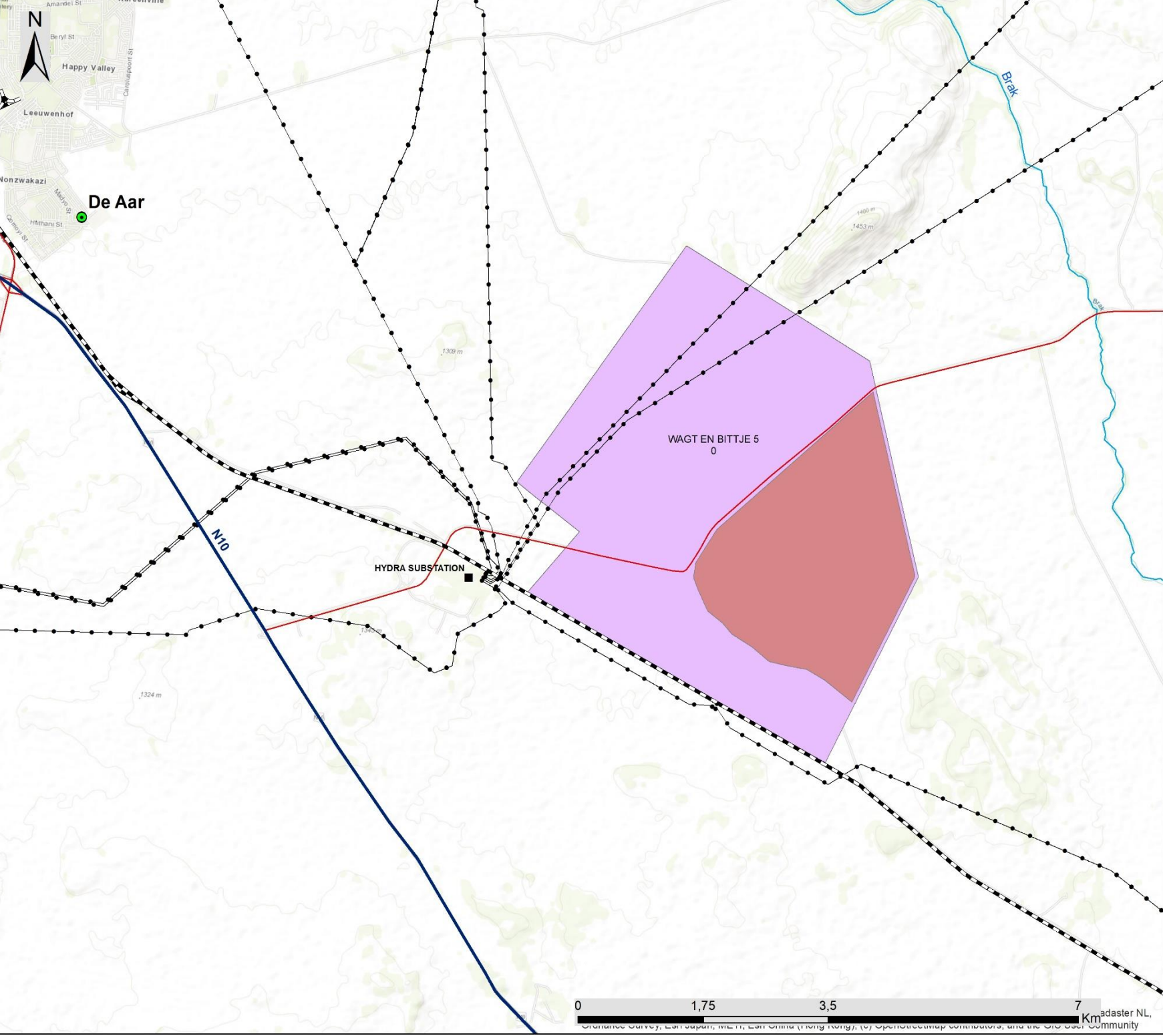


# Pixley Park Wagt Solar PV 1 Facility De Aar Northern Cape Province

## Sensitivity Map

### Legend

-  Town
  -  Eskom Substation
  -  Existing Power Line
  -  National Road
  -  Main Road
  -  Railway Line
  -  Perennial River
- Project Site**
-  Affected Property
- PV Facility**
-  Wagt Solar PV1 Footprint



Scale: 1:50 000  
 Projection: GCS\_WGS\_1984  
 Map Ref: Pixley Park Sensitivity Map

**savannah**  
 environmental

The inset map shows the outline of South Africa with its provinces labeled: Northern Cape, North West, Free State, Eastern Cape, and Western Cape. A red dot is placed in the Northern Cape province to indicate the location of the project site.

0 1,75 3,5 7 Km

adaster NL, Community

# Pixley Park Solar PV Facilities, De Aar, Northern Cape Province

## Locality Map

### Legend

- Eskom Substation
- Existing Power Line
- National Road
- Main Road
- Railway Line
- Perennial River
- Non-perennial River

### Project Site

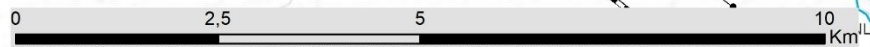
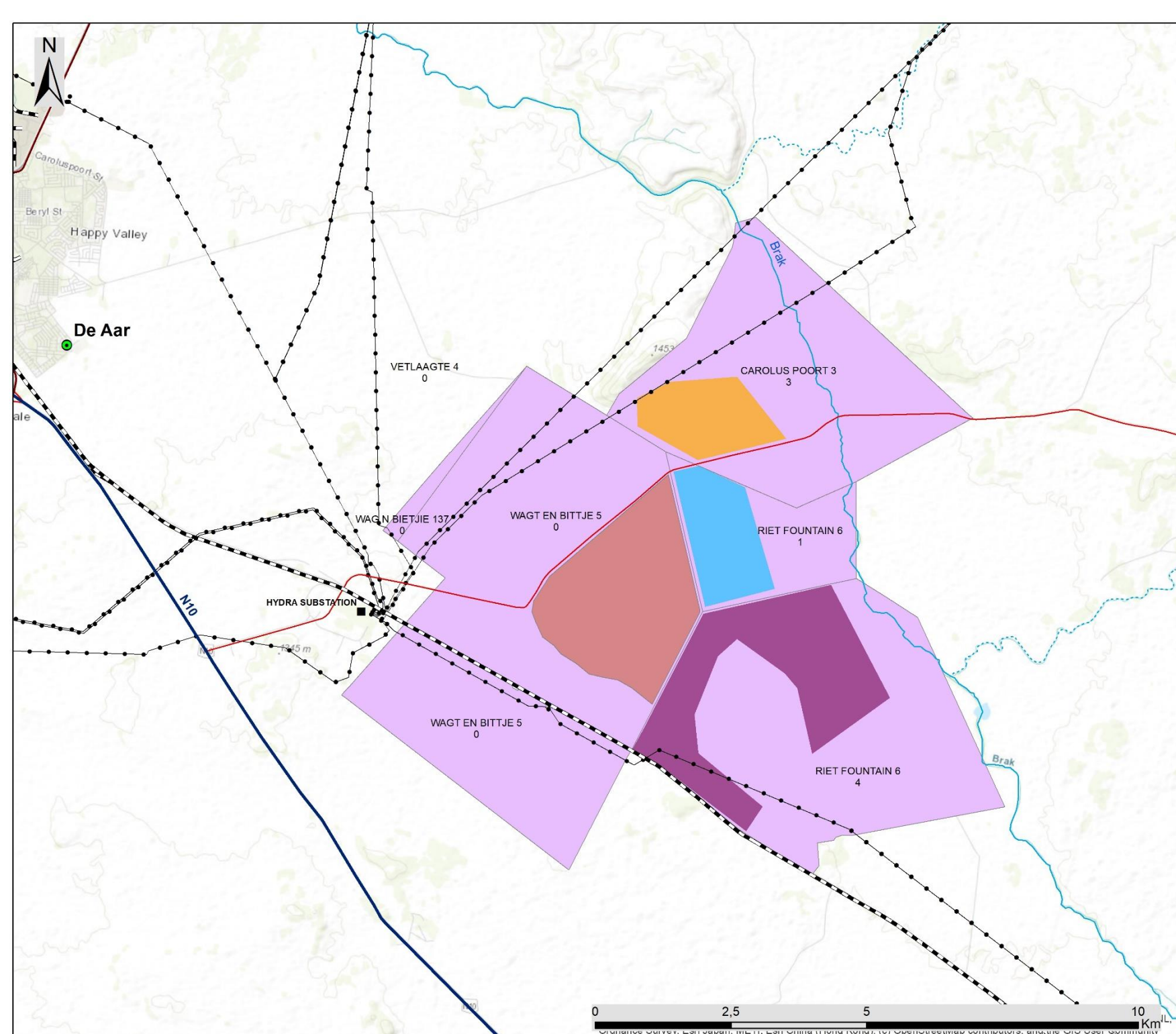
- Affected Properties

### PV Facilities

- Carolus Solar PV1
- Wagt Solar PV1 Footprint
- Riet Fountain PV1 Footprint
- Fountain Solar PV1 Footprint

Scale: 1:70 000  
 Projection: GCS\_WGS\_1984  
 Map Ref: Pixley Park Locality Map

savannah  
 environmental



© 2014 Savannah Environmental (Pty) Ltd. All rights reserved. This map is a derivative work of the Savannah Environmental (Pty) Ltd. map of the Pixley Park area, and is not to be used for any other purpose without the prior written consent of Savannah Environmental (Pty) Ltd.

# Pixley Park Solar PV Facilities, De Aar, Northern Cape Province

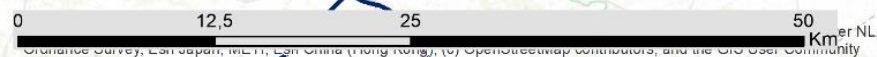
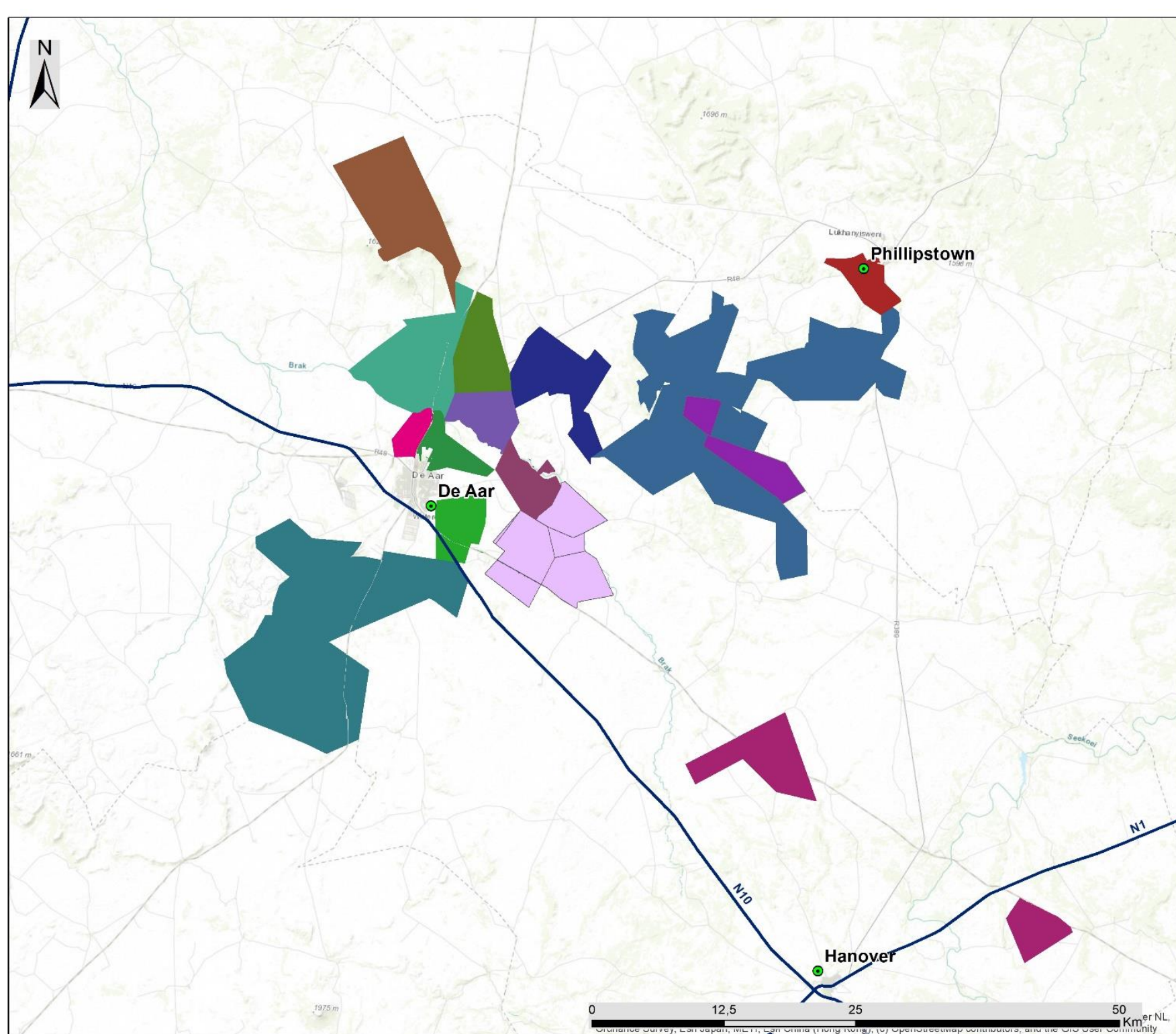
## Cumulative Map

### Legend

- Town
  - National Road
  - Proposed Pixley Park Solar PV Facilities
- ### Cumulative Renewable Energy Facilities
- Longyuan Mullio Wind Energy Facility Maanhaarberg (Operational)
  - Inca Solar PV Energy Project (Approved)
  - Renosterberg Solar PV Facility (Approved)
  - Castle Wind Energy Facility (In Process)
  - Proposed PV facility on farm Blaauwkratz (In Process)
  - Proposed PV facility on farm Caroluspoort (In Process)
  - Proposed PV facility on farm Jakhalsfontein (In Process)
  - Proposed PV facility on farm Loskop (Approved)
  - Renosterberg Solar PV Facility (Approved)
  - Ilanga Lethemba Solar PV Energy Facility (Approved)
  - Mullio Renewable Energy Wind Energy Facility (Approved)
  - Photovoltaic Solar Energy Facility on Paarde Valley Farm (Approved)
  - Solar PV Plant on farm Paarde (Approved)
  - Scatec Solar PV Energy Facility (Operational)

Scale: 1:300 000  
 Projection: GCS\_WGS\_1984  
 Map Ref: Pixley Park Cumulative Map

savannah  
 environmental





WAGTENBITTJES  
0

# Pixley Park Wagt Solar PV 1 Facility De Aar Northern Cape Province

## Sensitivity Map

### Legend

— Main Road

□ Affected Property

### Ecological Sensitivity

■ Non-Developable Areas ( Dolerite  
Koppies, Sills and Drainage Lines)

### Land Capability

▨ Medium Soil Sensitivity

### Conservation Area

■ Ecological Support Area

### Heritage Sensitivity

★ Outlined scratched antelope engraving

★ Engravings, roughly scratched, crude  
form of animal, for legs, crab like figure,  
ostrich eggshell

★ Engravings, also similar crudely  
scratched. Animal form, 2 long ostrich  
figures

□ 100m Heritage Buffers

Scale: 1:20 000  
Projection: GCS\_WGS\_1984  
Map Ref: Wagt Solar PV 1 Sensitivity Map

savannah  
environmental



0 0,5 1 2 Km  
© 2014, and the GIS User