

**SCREENING REPORT FOR AN ENVIRONMENTAL AUTHORIZATION OR  
FOR A PART TWO AMENDMENT OF AN ENVIRONMENTAL AUTHORISATION  
AS REQUIRED BY THE 2014 EIA REGULATIONS – PROPOSED DEVELOPMENT  
FOOTPRINT ENVIRONMENTAL SENSITIVITY**

**EIA Reference number:**

**Project name:** Gunstfontein 132kV OHL extension

**Project title:** Grid connection infrastructure for the Gunstfontein Wind Energy Farm

**Date screening report generated:** 10/03/2020 12:23:26

**Applicant:** Komsberg Wind Farm (Pty) Ltd

**Compiler:** Ethanne Soar - Savannah Environmental

**Compiler signature:**

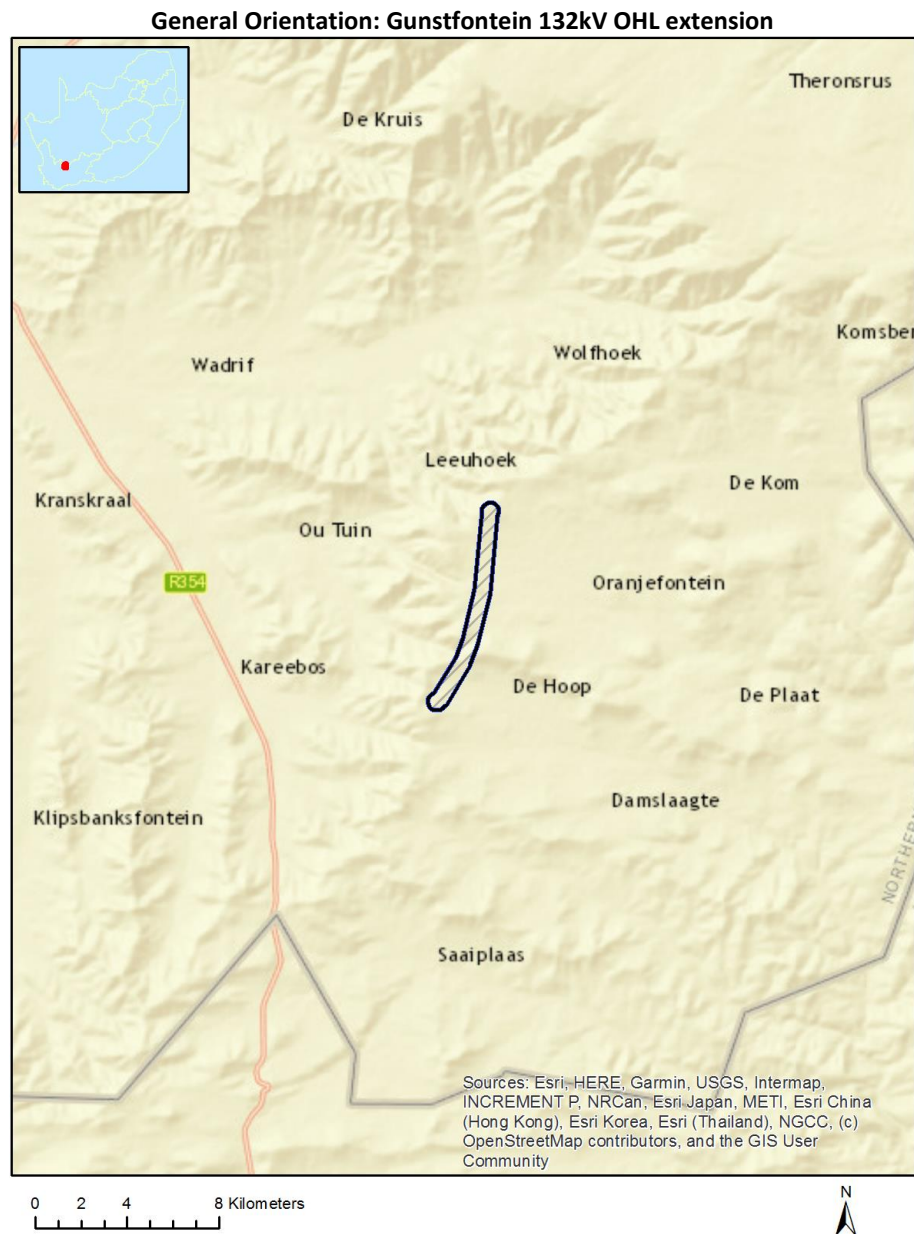
.....

## Table of Contents

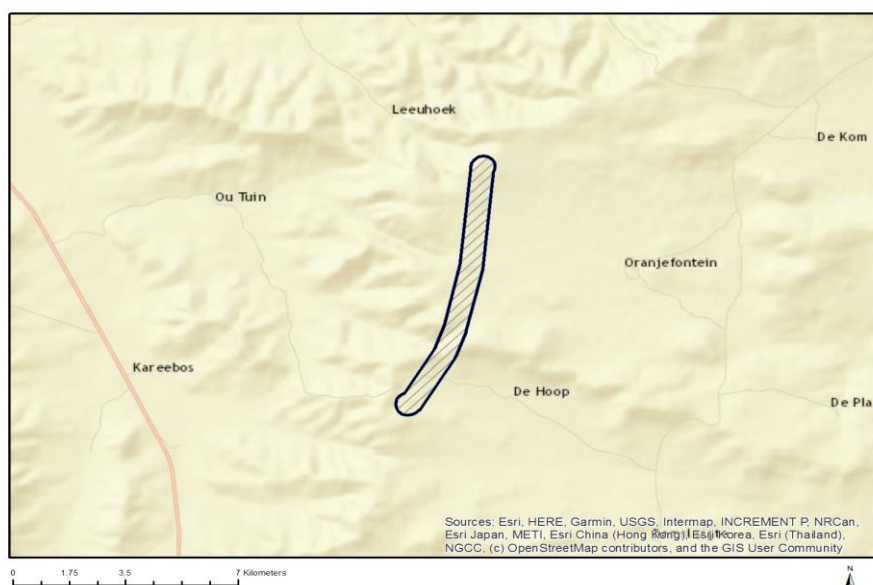
Proposed Project Location .....	3
Orientation map 1: General location .....	3
Map of proposed site and relevant area(s) .....	4
Cadastral details of the proposed site .....	4
Wind and Solar developments with an approved Environmental Authorisation or applications under consideration within 30 km of the proposed area .....	6
Environmental Management Frameworks relevant to the application .....	6
Environmental screening results and assessment outcomes .....	6
Relevant development incentives, restrictions, exclusions or prohibitions .....	6
Map indicating proposed development footprint within applicable development incentive, restriction, exclusion or prohibition zones .....	8
Proposed Development Area Environmental Sensitivity .....	8
Specialist assessments identified .....	9
Results of the environmental sensitivity of the proposed area. ....	11
MAP OF RELATIVE AGRICULTURE THEME SENSITIVITY .....	11
MAP OF RELATIVE ANIMAL SPECIES THEME SENSITIVITY .....	12
MAP OF RELATIVE AQUATIC BIODIVERSITY THEME SENSITIVITY .....	13
MAP OF RELATIVE ARCHAEOLOGICAL AND CULTURAL HERITAGE THEME SENSITIVITY .....	14
MAP OF RELATIVE CIVIL AVIATION THEME SENSITIVITY .....	15
MAP OF RELATIVE PALEONTOLOGY THEME SENSITIVITY .....	16
MAP OF RELATIVE PLANT SPECIES THEME SENSITIVITY .....	17
MAP OF RELATIVE DEFENCE THEME SENSITIVITY .....	18
MAP OF RELATIVE TERRESTRIAL BIODIVERSITY THEME SENSITIVITY .....	19

# Proposed Project Location

## Orientation map 1: General location



## Map of proposed site and relevant area(s)



## Cadastral details of the proposed site

Property details:

No	Farm Name	Farm/ Erf No	Portion	Latitude	Longitude	Property Type
1	LEEUE HOEK	183	0	32°43'49.99S	20°36'29.48E	Farm
2	DE HOOP	202	0	32°49'4.06S	20°39'7.2E	Farm
3	ORANGE FONTEIN	185	0	32°45'7.18S	20°38'46.91E	Farm
4	ORANGIE FONTEIN	203	0	32°46'12.4S	20°41'6.61E	Farm
5	LEEUE HOEK	183	0	32°43'49.99S	20°36'29.48E	Farm Portion
6	ORANGE FONTEIN	185	0	32°45'7.18S	20°38'46.91E	Farm Portion
7	DE HOOP	202	0	32°49'4.06S	20°39'7.2E	Farm Portion
8	ORANGIE FONTEIN	203	1	32°46'47.72S	20°40'16.44E	Farm Portion

Development footprint<sup>1</sup> vertices:

Footprint	Latitude	Longitude
1	32°48'48.91S	20°37'25.17E
1	32°48'48.85S	20°37'23.83E
1	32°48'48.65S	20°37'22.52E
1	32°48'48.34S	20°37'21.22E
1	32°48'47.88S	20°37'19.99E
1	32°48'47.32S	20°37'18.84E

<sup>1</sup> “development footprint”, means the area within the site on which the development will take place and includes all ancillary developments for example roads, power lines, boundary walls, paving etc. which require vegetation clearance or which will be disturbed and for which the application has been submitted.

1	32°48'46.65S	20°37'17.76E
1	32°48'45.87S	20°37'16.78E
1	32°48'45S	20°37'15.92E
1	32°48'44.05S	20°37'15.18E
1	32°48'43.04S	20°37'14.58E
1	32°48'41.98S	20°37'14.12E
1	32°48'41.51S	20°37'13.97E
1	32°48'40.19S	20°37'13.59E
1	32°48'39.55S	20°37'13.42E
1	32°48'38.41S	20°37'13.27E
1	32°48'37.28S	20°37'13.27E
1	32°48'36.16S	20°37'13.42E
1	32°48'35.06S	20°37'13.73E
1	32°48'33.99S	20°37'14.19E
1	32°48'32.98S	20°37'14.79E
1	32°48'32.04S	20°37'15.53E
1	32°48'31.16S	20°37'16.39E
1	32°48'30.39S	20°37'17.37E
1	32°48'29.72S	20°37'18.44E
1	32°48'29.14S	20°37'19.6E
1	32°48'28.7S	20°37'20.83E
1	32°48'28.51S	20°37'21.52E
1	32°47'45.65S	20°37'52.04E
1	32°47'22.82S	20°38'1.87E
1	32°46'25.24S	20°38'17.93E
1	32°44'52.36S	20°38'28.63E
1	32°44'51.62S	20°38'28.74E
1	32°44'50.51S	20°38'29.05E
1	32°44'49.45S	20°38'29.51E
1	32°44'48.44S	20°38'30.11E
1	32°44'47.49S	20°38'30.84E
1	32°44'46.62S	20°38'31.71E
1	32°44'45.84S	20°38'32.69E
1	32°44'45.55S	20°38'33.12E
1	32°44'44.62S	20°38'34.59E
1	32°44'44.22S	20°38'35.24E
1	32°44'43.66S	20°38'36.39E
1	32°44'43.22S	20°38'37.62E
1	32°44'42.89S	20°38'38.9E
1	32°44'42.68S	20°38'40.22E
1	32°44'42.61S	20°38'41.57E
1	32°44'42.68S	20°38'42.9E
1	32°44'42.89S	20°38'44.23E
1	32°44'43.22S	20°38'45.5E
1	32°44'43.66S	20°38'46.74E
1	32°44'44.22S	20°38'47.9E
1	32°44'44.89S	20°38'48.97E
1	32°44'45.68S	20°38'49.95E
1	32°44'46.54S	20°38'50.81E
1	32°44'47.49S	20°38'51.55E
1	32°44'48.51S	20°38'52.15E
1	32°44'49.58S	20°38'52.6E
1	32°44'50.68S	20°38'52.92E
1	32°44'51.79S	20°38'53.07E
1	32°44'52.93S	20°38'53.07E
1	32°44'54.05S	20°38'52.92E
1	32°44'55.15S	20°38'52.6E
1	32°44'56.22S	20°38'52.15E
1	32°44'57.23S	20°38'51.55E
1	32°44'57.72S	20°38'51.16E

1	32°46'27.77S	20°38'40.8E
1	32°46'28.52S	20°38'40.68E
1	32°46'29.06S	20°38'40.55E
1	32°47'27.85S	20°38'24.16E
1	32°47'28.41S	20°38'23.98E
1	32°47'28.93S	20°38'23.77E
1	32°47'53.19S	20°38'13.33E
1	32°47'53.72S	20°38'13.09E
1	32°47'54.74S	20°38'12.48E
1	32°47'54.87S	20°38'12.38E
1	32°48'41.86S	20°37'38.93E
1	32°48'42.65S	20°37'38.29E
1	32°48'43.52S	20°37'37.44E
1	32°48'44.3S	20°37'36.46E
1	32°48'44.97S	20°37'35.38E
1	32°48'45.11S	20°37'35.1E
1	32°48'45.65S	20°37'34.57E
1	32°48'46.43S	20°37'33.59E
1	32°48'47.1S	20°37'32.51E
1	32°48'47.66S	20°37'31.35E
1	32°48'48.12S	20°37'30.12E
1	32°48'48.42S	20°37'28.96E
1	32°48'48.63S	20°37'27.95E
1	32°48'48.65S	20°37'27.82E
1	32°48'48.85S	20°37'26.5E
1	32°48'48.91S	20°37'25.17E

## Wind and Solar developments with an approved Environmental Authorisation or applications under consideration within 30 km of the proposed area

No nearby wind or solar developments found.

## Environmental Management Frameworks relevant to the application

No intersections with EMF areas found.

## Environmental screening results and assessment outcomes

The following sections contain a summary of any development incentives, restrictions, exclusions or prohibitions that apply to the proposed development footprint as well as the most environmental sensitive features on the footprint based on the footprint sensitivity screening results for the application classification that was selected. The application classification selected for this report is:

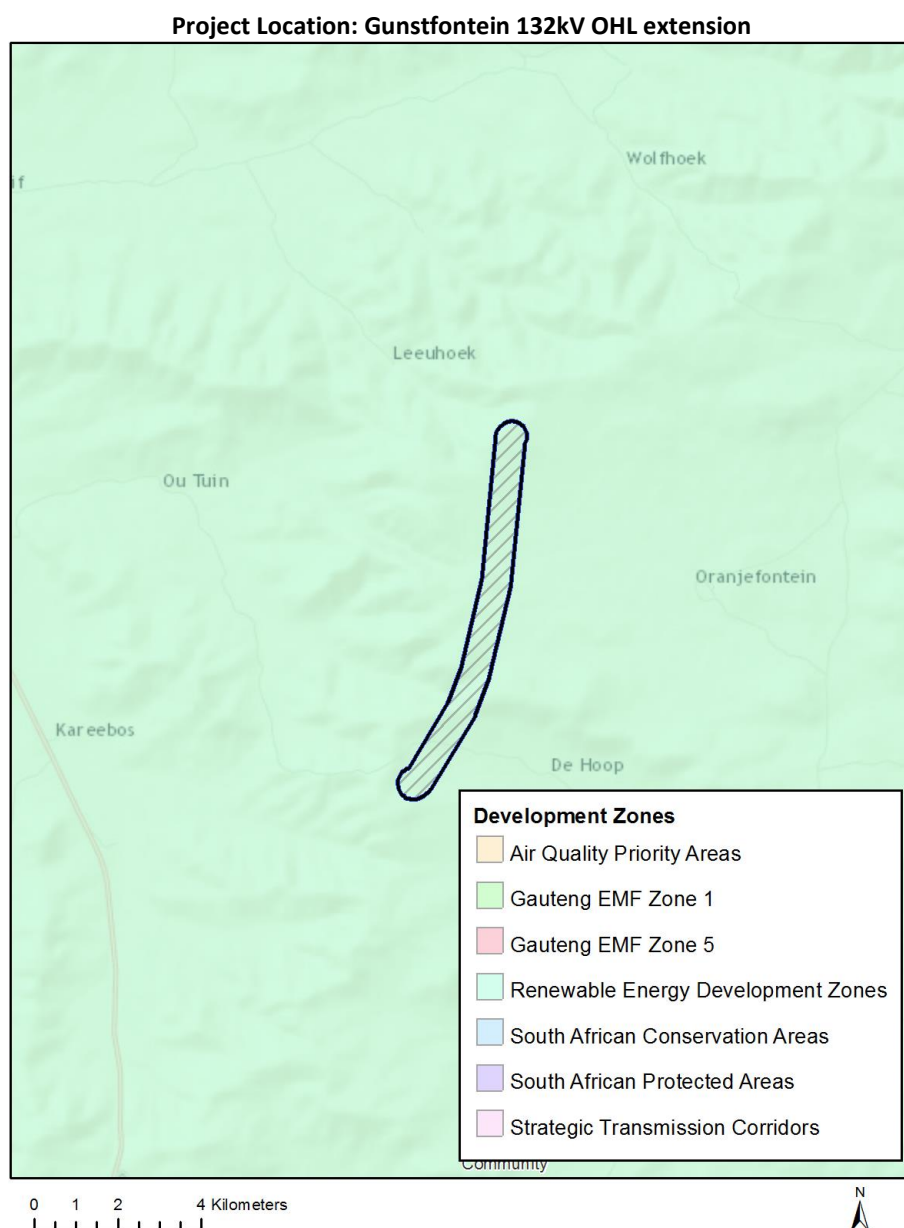
Any activities within or close to a watercourse | Any activities within or close to a watercourse.

## Relevant development incentives, restrictions, exclusions or prohibitions

The following development incentives, restrictions, exclusions or prohibitions and their implications that apply to this footprint are indicated below.

Incentive, restriction or prohibition	Implication
Strategic Transmission Corridor-Central corridor	<a href="https://screening.environment.gov.za/ScreeningDownloads/DevelopmentZones/GNR_350_of_13_April_2017.pdf">https://screening.environment.gov.za/ScreeningDownloads/DevelopmentZones/GNR_350_of_13_April_2017.pdf</a>
Renewable energy development zones 2-Komsberg	<a href="https://screening.environment.gov.za/ScreeningDownloads/DevelopmentZones/GNR_350_of_13_April_2017.pdf">https://screening.environment.gov.za/ScreeningDownloads/DevelopmentZones/GNR_350_of_13_April_2017.pdf</a>

Map indicating proposed development footprint within applicable development incentive, restriction, exclusion or prohibition zones



### Proposed Development Area Environmental Sensitivity

The following summary of the development footprint environmental sensitivities is identified. Only the highest environmental sensitivity is indicated. The footprint environmental sensitivities for the proposed development footprint as identified, are indicative only and must be verified on site by a suitably qualified person before the specialist assessments identified below can be confirmed.

Theme	Very High sensitivity	High sensitivity	Medium sensitivity	Low sensitivity
Agriculture Theme			X	
Animal Species Theme		X		



Aquatic Biodiversity Theme				X
Archaeological and Cultural Heritage Theme			X	
Civil Aviation Theme				X
Paleontology Theme		X		
Plant Species Theme			X	
Defence Theme				X
Terrestrial Biodiversity Theme	X			

### Specialist assessments identified

Based on the selected classification, and the environmental sensitivities of the proposed development footprint, the following list of specialist assessments have been identified for inclusion in the assessment report. It is the responsibility of the EAP to confirm this list and to motivate in the assessment report, the reason for not including any of the identified specialist study including the provision of photographic evidence of the footprint situation.

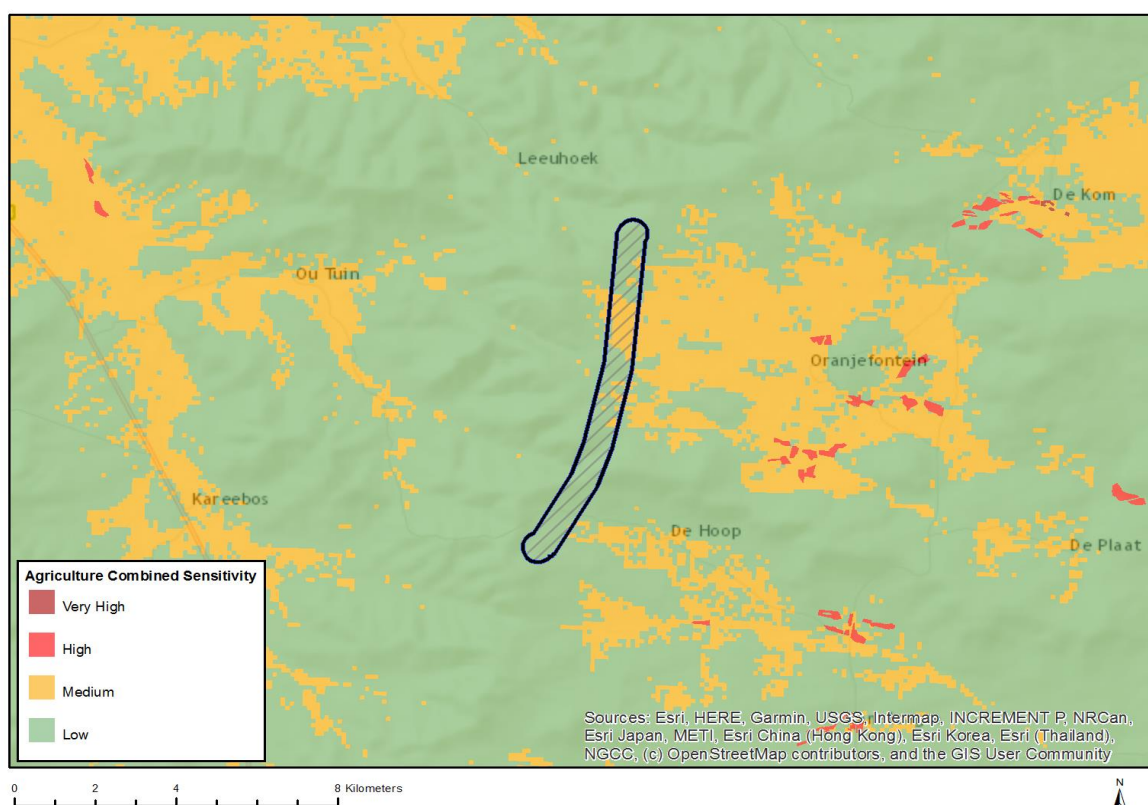
N o	Specialist assessment	Assessment Protocol
1	Landscape/Visual Impact Assessment	<a href="https://screening.environment.gov.za/ScreeningDownloads/AssessmentProtocols/DraftGazetted_General_Requirement_Assessment_Protocols.pdf">https://screening.environment.gov.za/ScreeningDownloads/AssessmentProtocols/DraftGazetted_General_Requirement_Assessment_Protocols.pdf</a>
2	Archaeological and Cultural Heritage Impact Assessment	<a href="https://screening.environment.gov.za/ScreeningDownloads/AssessmentProtocols/DraftGazetted_General_Requirement_Assessment_Protocols.pdf">https://screening.environment.gov.za/ScreeningDownloads/AssessmentProtocols/DraftGazetted_General_Requirement_Assessment_Protocols.pdf</a>
3	Paleontology Impact Assessment	<a href="https://screening.environment.gov.za/ScreeningDownloads/AssessmentProtocols/DraftGazetted_General_Requirement_Assessment_Protocols.pdf">https://screening.environment.gov.za/ScreeningDownloads/AssessmentProtocols/DraftGazetted_General_Requirement_Assessment_Protocols.pdf</a>
4	Terrestrial Biodiversity Impact Assessment	<a href="https://screening.environment.gov.za/ScreeningDownloads/AssessmentProtocols/DraftGazetted_Terrestrial_Biodiversity_Assessment_Protocols.pdf">https://screening.environment.gov.za/ScreeningDownloads/AssessmentProtocols/DraftGazetted_Terrestrial_Biodiversity_Assessment_Protocols.pdf</a>
5	Aquatic Biodiversity Impact Assessment	<a href="https://screening.environment.gov.za/ScreeningDownloads/AssessmentProtocols/DraftGazetted_Aquatic_Biodiversity_Assessment.pdf">https://screening.environment.gov.za/ScreeningDownloads/AssessmentProtocols/DraftGazetted_Aquatic_Biodiversity_Assessment.pdf</a>
6	Hydrology Assessment	<a href="https://screening.environment.gov.za/ScreeningDownloads/AssessmentProtocols/DraftGazetted_General_Requirement_Assessment_Protocols.pdf">https://screening.environment.gov.za/ScreeningDownloads/AssessmentProtocols/DraftGazetted_General_Requirement_Assessment_Protocols.pdf</a>
7	Socio-Economic	<a href="https://screening.environment.gov.za/ScreeningDownloads/AssessmentProtocols">https://screening.environment.gov.za/ScreeningDownloads/AssessmentProtocols</a>

	c Assessm ent	<a href="#">/DraftGazetted_General_Requirement_Assessment_Protocols.pdf</a>
8	Plant Species Assessm ent	<a href="https://screening.environment.gov.za/ScreeningDownloads/AssessmentProtocols/DraftGazetted_General_Requirement_Assessment_Protocols.pdf">https://screening.environment.gov.za/ScreeningDownloads/AssessmentProtocols/DraftGazetted_General_Requirement_Assessment_Protocols.pdf</a>
9	Animal Species Assessm ent	<a href="https://screening.environment.gov.za/ScreeningDownloads/AssessmentProtocols/DraftGazetted_General_Requirement_Assessment_Protocols.pdf">https://screening.environment.gov.za/ScreeningDownloads/AssessmentProtocols/DraftGazetted_General_Requirement_Assessment_Protocols.pdf</a>

## Results of the environmental sensitivity of the proposed area.

The following section represents the results of the screening for environmental sensitivity of the proposed footprint for relevant environmental themes associated with the project classification. It is the duty of the EAP to ensure that the environmental themes provided by the screening tool are comprehensive and complete for the project. Refer to the disclaimer.

### MAP OF RELATIVE AGRICULTURE THEME SENSITIVITY

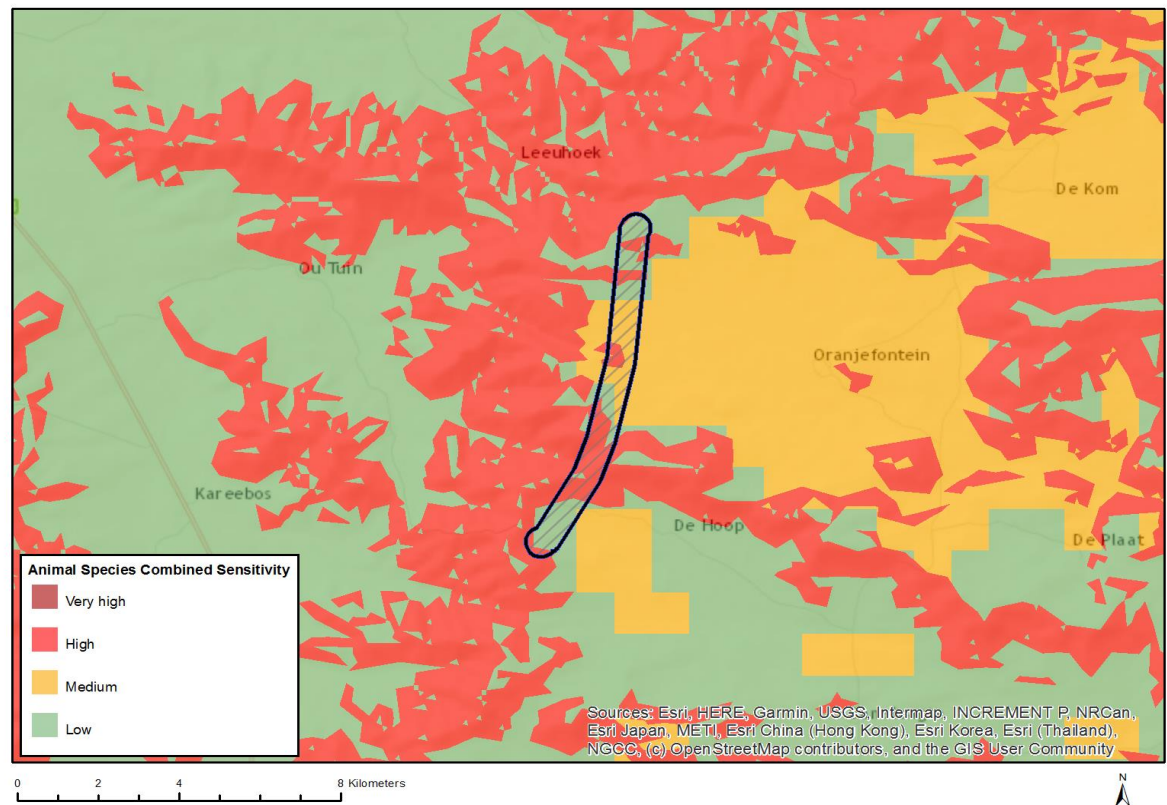


Very High sensitivity	High sensitivity	Medium sensitivity	Low sensitivity
		X	

#### Sensitivity Features:

Sensitivity	Feature(s)
Low	Land capability;01. Very low/02. Very low/03. Low-Very low/04. Low-Very low/05. Low
Medium	Land capability;06. Low-Moderate/07. Low-Moderate/08. Moderate

MAP OF RELATIVE ANIMAL SPECIES THEME SENSITIVITY

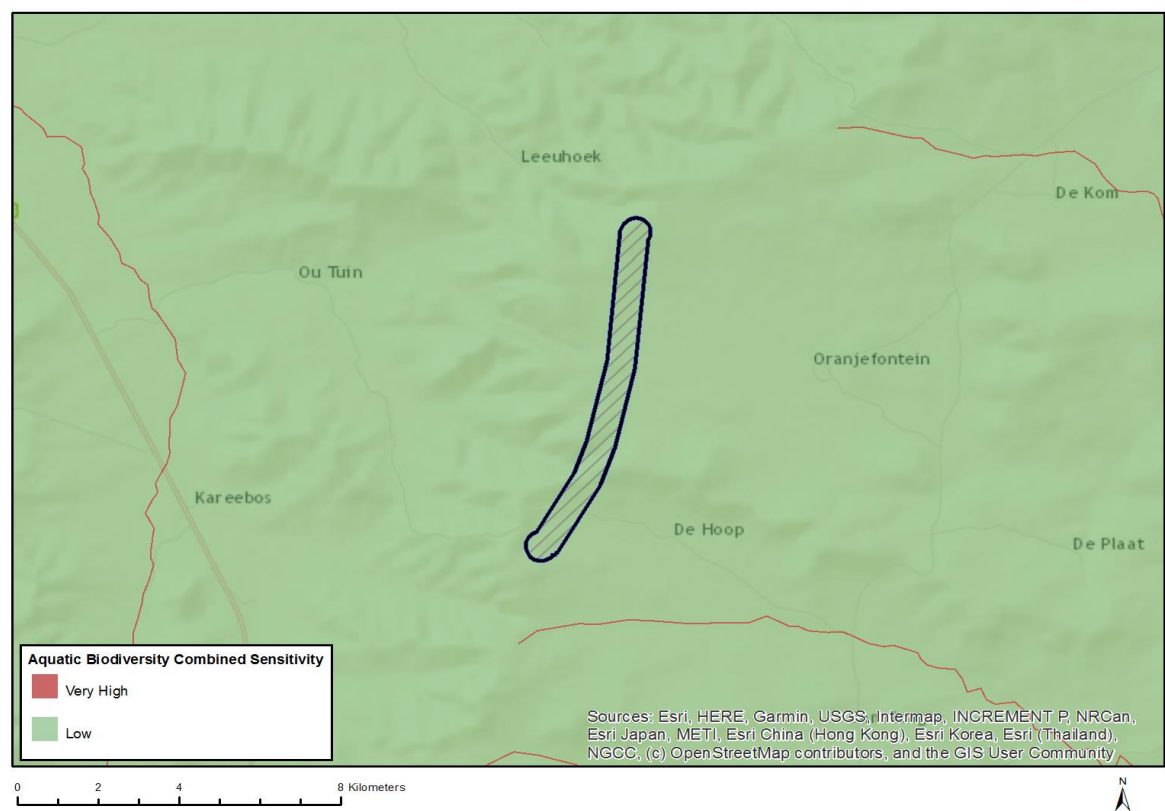


Very High sensitivity	High sensitivity	Medium sensitivity	Low sensitivity
	X		

Sensitivity Features:

Sensitivity	Feature(s)
High	Aves-Aquila verreauxii
Low	Low sensitivity
Medium	Mammalia-Bunolagus monticularis

MAP OF RELATIVE AQUATIC BIODIVERSITY THEME SENSITIVITY

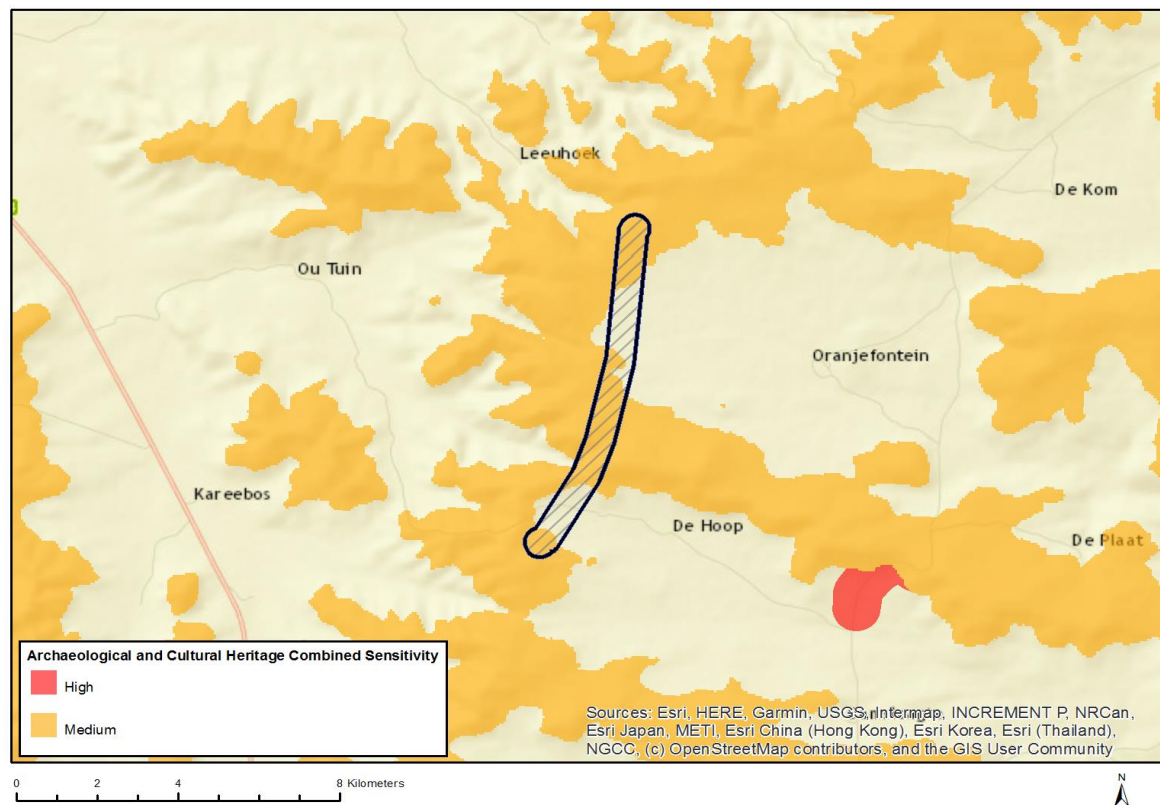


Very High sensitivity	High sensitivity	Medium sensitivity	Low sensitivity
			X

Sensitivity Features:

Sensitivity	Feature(s)
Low	Low Sensitivity Areas

## MAP OF RELATIVE ARCHAEOLOGICAL AND CULTURAL HERITAGE THEME SENSITIVITY

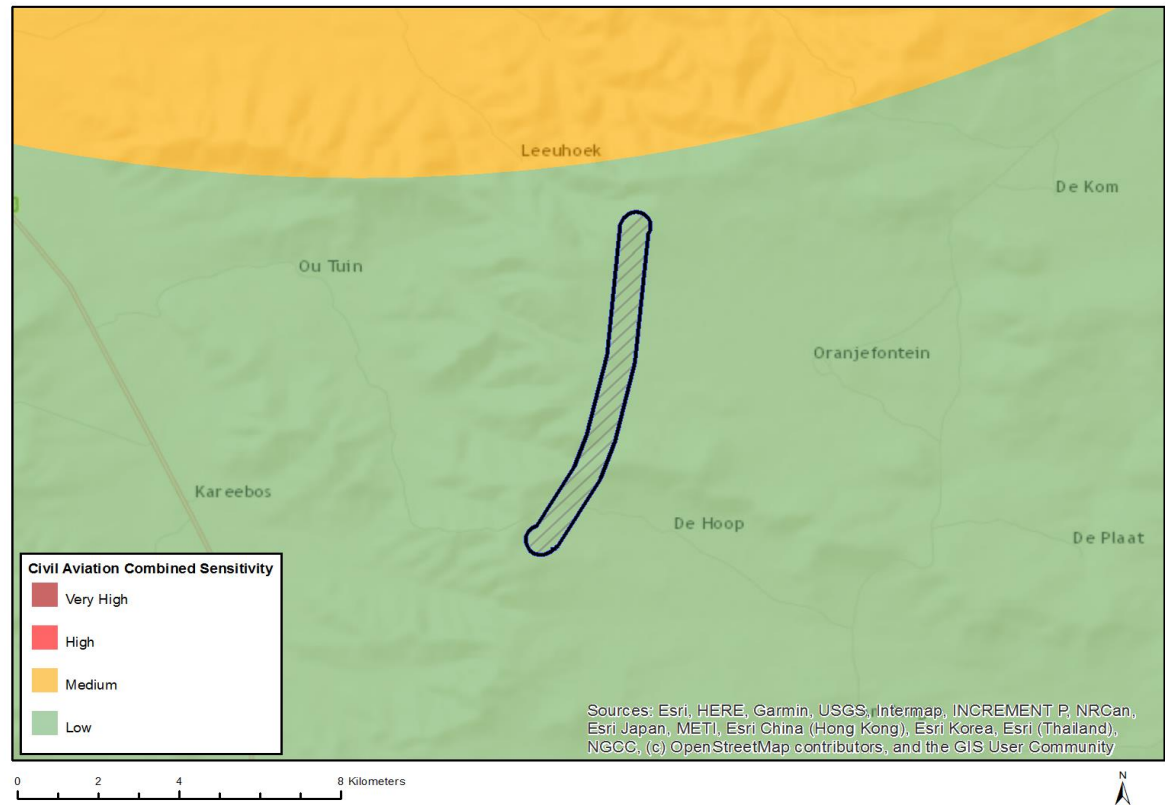


Very High sensitivity	High sensitivity	Medium sensitivity	Low sensitivity
		X	

### Sensitivity Features:

Sensitivity	Feature(s)
Medium	Mountain or ridge

# MAP OF RELATIVE CIVIL AVIATION THEME SENSITIVITY



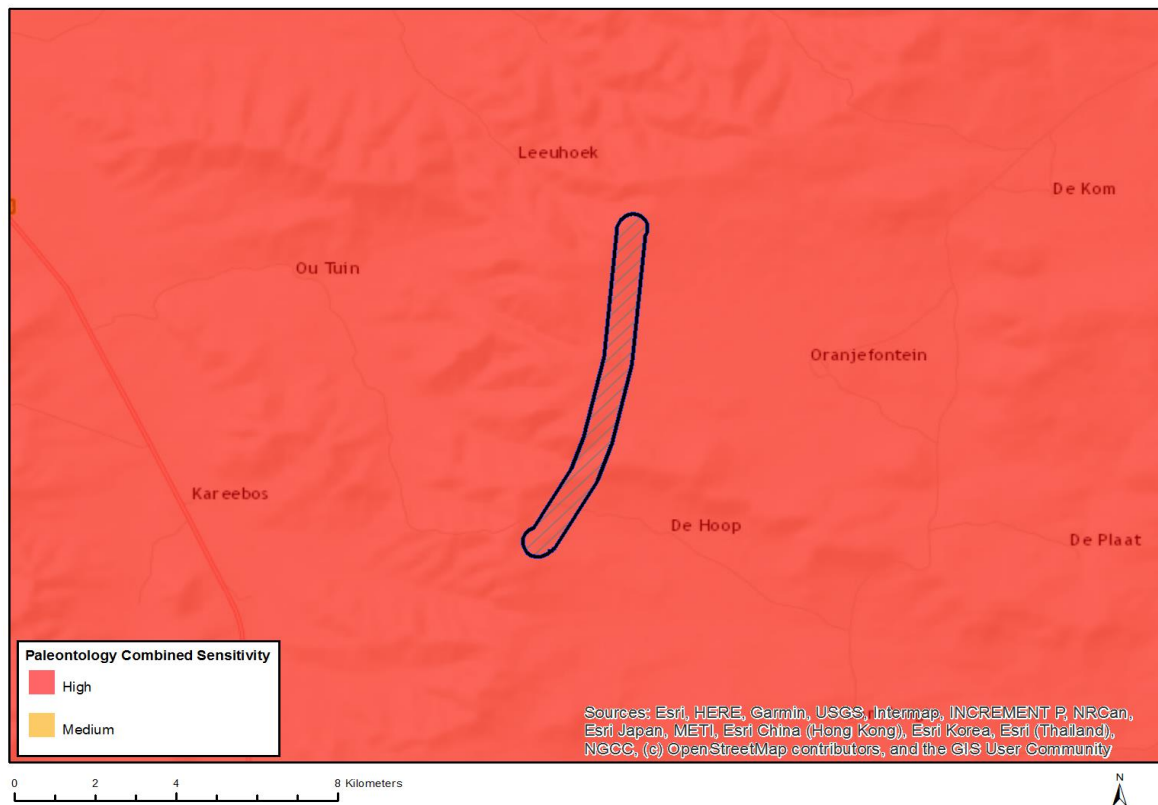
Very High sensitivity	High sensitivity	Medium sensitivity	Low sensitivity
			X

## Sensitivity Features:

Sensitivity	Feature(s)
Low	Low sensitivity



## MAP OF RELATIVE PALEONTOLOGY THEME SENSITIVITY



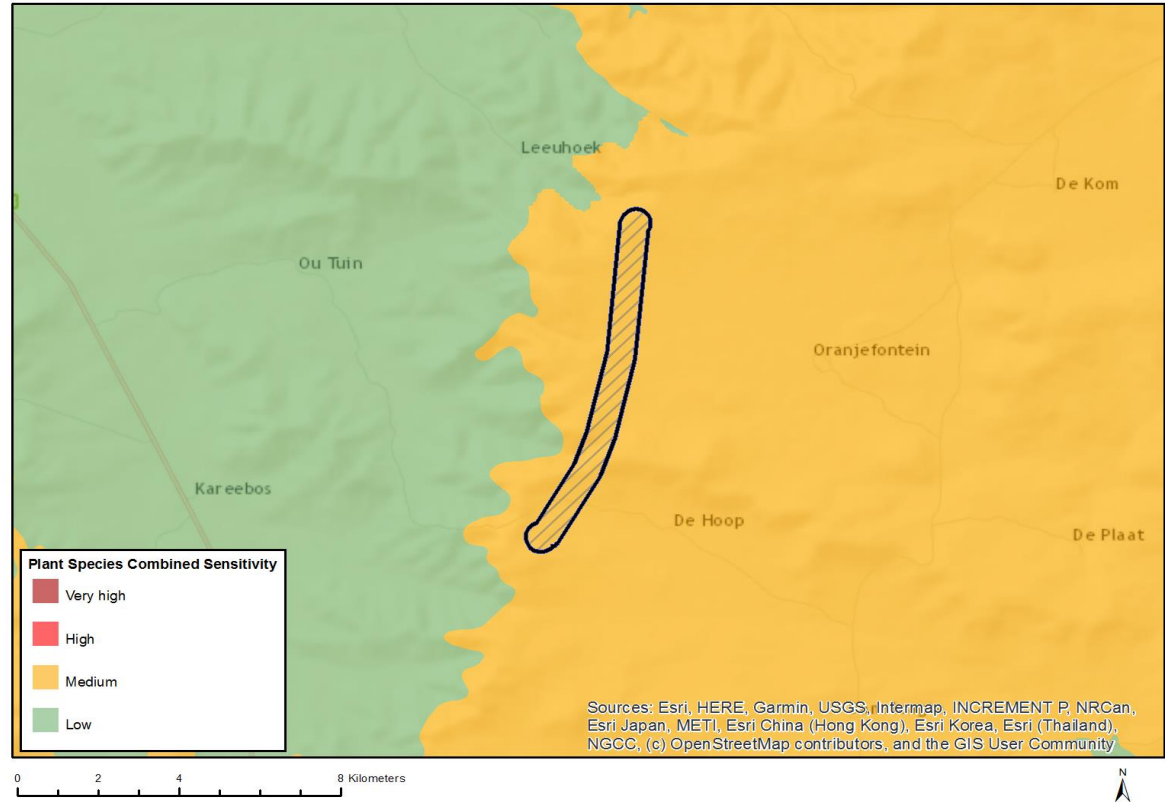
Very High sensitivity	High sensitivity	Medium sensitivity	Low sensitivity
	X		

### Sensitivity Features:

Sensitivity	Feature(s)
High	Rock units with a high paleontological sensitivity



# MAP OF RELATIVE PLANT SPECIES THEME SENSITIVITY

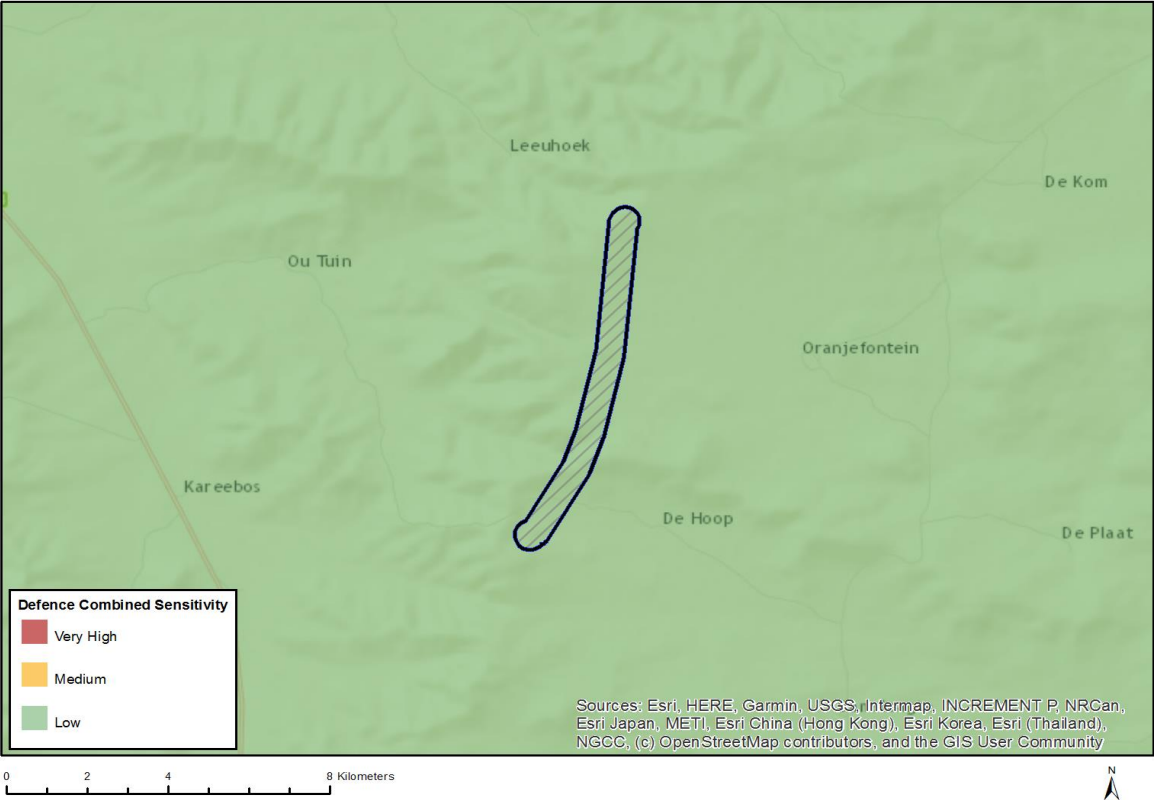


Very High sensitivity	High sensitivity	Medium sensitivity	Low sensitivity
		X	

## Sensitivity Features:

Sensitivity	Feature(s)
Medium	Sensitive species 140
Medium	Sensitive species 527
Medium	Lotononis venosa

MAP OF RELATIVE DEFENCE THEME SENSITIVITY

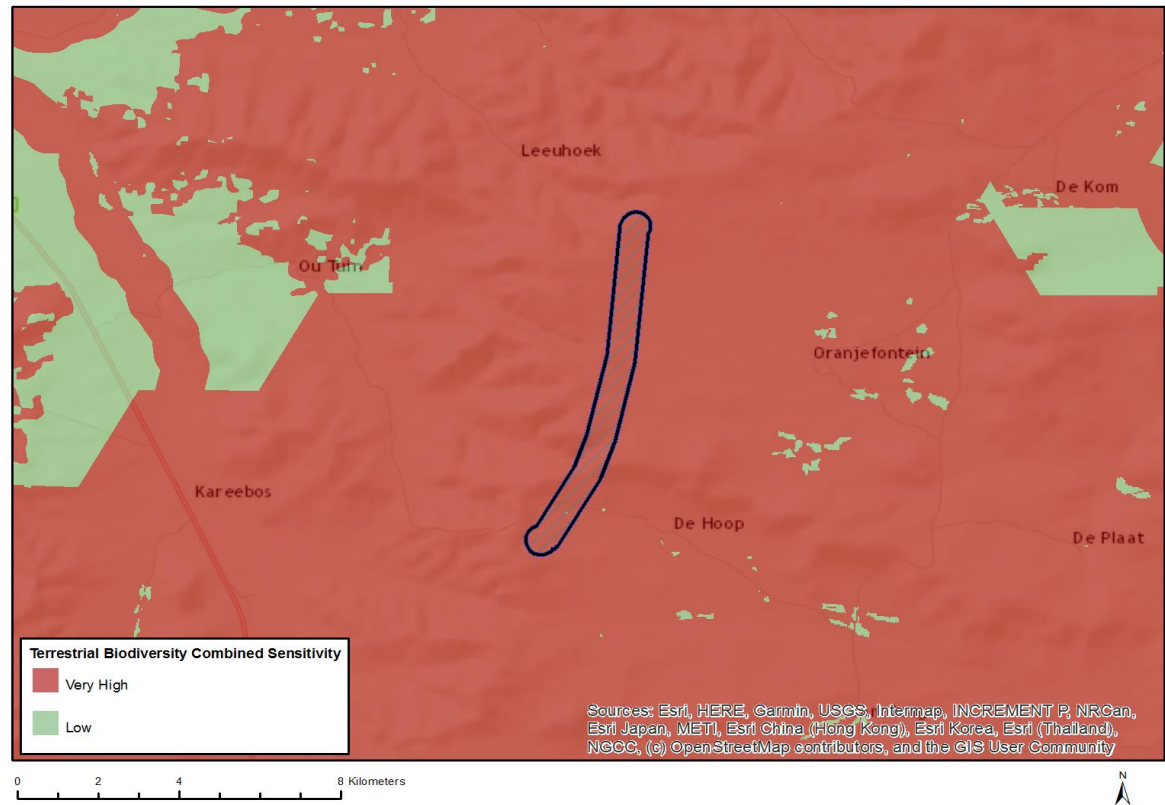


Very High sensitivity	High sensitivity	Medium sensitivity	Low sensitivity
			X

Sensitivity Features:

Sensitivity	Feature(s)
Low	Low sensitivity

# MAP OF RELATIVE TERRESTRIAL BIODIVERSITY THEME SENSITIVITY



Very High sensitivity	High sensitivity	Medium sensitivity	Low sensitivity
X			

## Sensitivity Features:

Sensitivity	Feature(s)
Low	Low sensitivity
Very High	Critical Biodiversity Area 1
Very High	Critical Biodiversity Area 2
Very High	Focus Areas for land-based protected areas expansion