

**SCREENING REPORT FOR AN ENVIRONMENTAL AUTHORIZATION OR  
FOR A PART TWO AMENDMENT OF AN ENVIRONMENTAL AUTHORISATION  
AS REQUIRED BY THE 2014 EIA REGULATIONS – PROPOSED SITE  
ENVIRONMENTAL SENSITIVITY**

**EIA Reference number:**

**Project name:** Upilanga Solar Park

**Project title:** 100MW PV Sensitivity

**Date screening report generated:** 15/05/2020 16:01:07

**Applicant:** Emvelo Capital Projects (Pty) Ltd

**Compiler:** Savannah Environmental

**Compiler signature:**



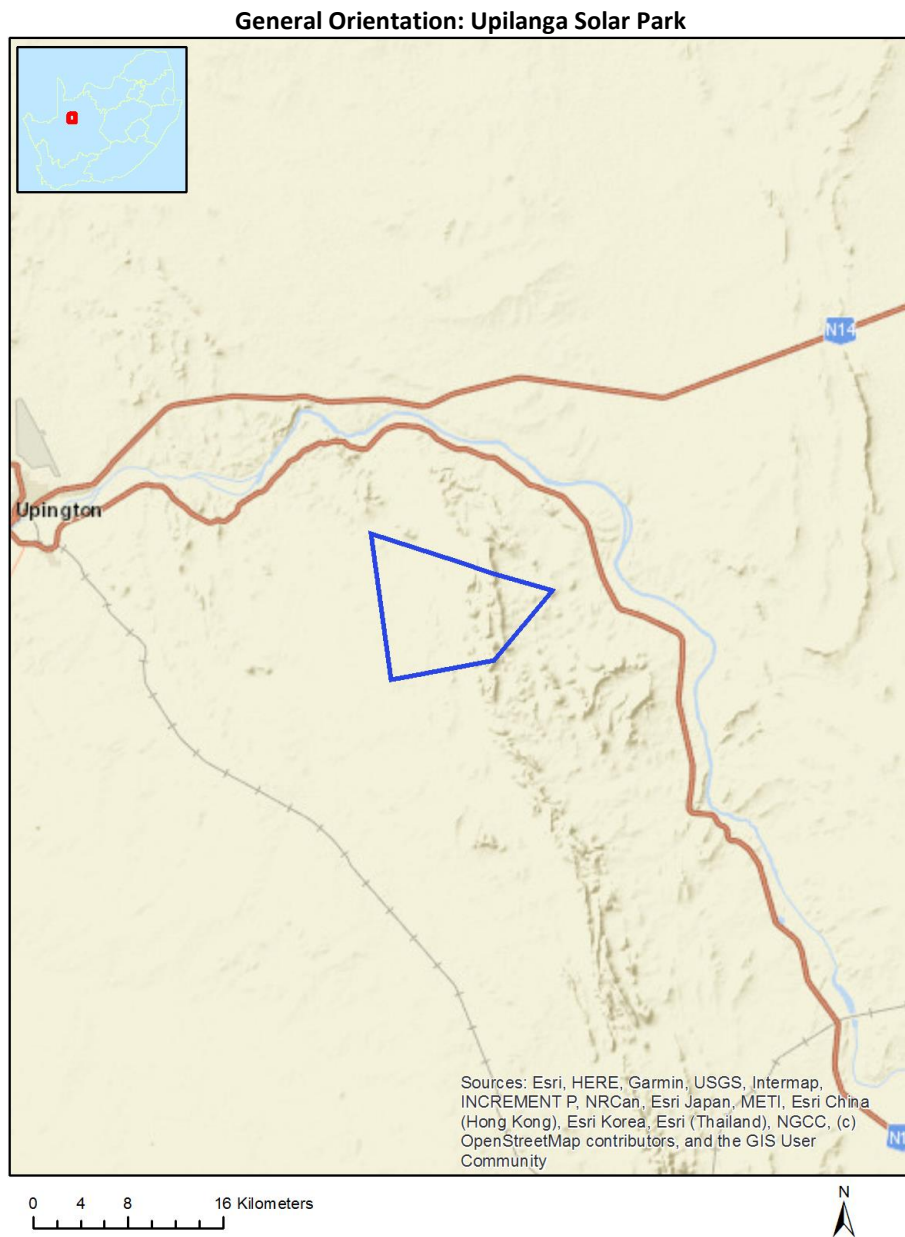
.....

## Table of Contents

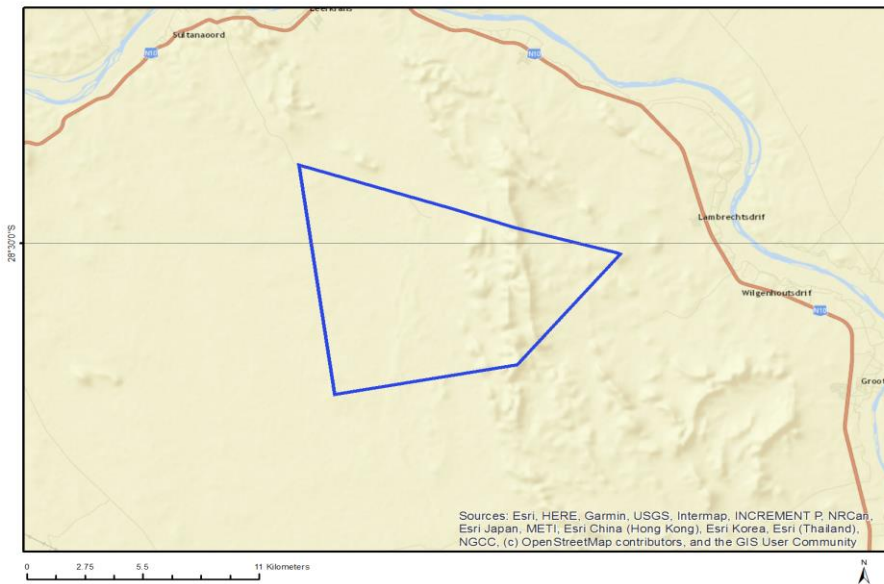
|   |    |
|---|----|
| Proposed Project Location .....   | 3  |
| Orientation map 1: General location .....   | 3  |
| Map of proposed site and relevant area(s) .....   | 4  |
| Cadastral details of the proposed site .....  | 4  |
| Wind and Solar developments with an approved Environmental Authorisation or applications<br>under consideration within 30 km of the proposed area ..... | 4  |
| Environmental Management Frameworks relevant to the application .....   | 5  |
| Environmental screening results and assessment outcomes .....   | 5  |
| Relevant development incentives, restrictions, exclusions or prohibitions .....   | 6  |
| Map indicating proposed development footprint within applicable development incentive,<br>restriction, exclusion or prohibition zones .....             | 7  |
| Proposed Development Area Environmental Sensitivity .....   | 7  |
| Specialist assessments identified .....   | 8  |
| Results of the environmental sensitivity of the proposed area .....   | 10 |
| MAP OF RELATIVE AGRICULTURE THEME SENSITIVITY .....   | 10 |
| MAP OF RELATIVE ANIMAL SPECIES THEME SENSITIVITY .....  | 11 |
| MAP OF RELATIVE AQUATIC BIODIVERSITY THEME SENSITIVITY .....  | 12 |
| MAP OF RELATIVE ARCHAEOLOGICAL AND CULTURAL HERITAGE THEME SENSITIVITY .....  | 13 |
| MAP OF RELATIVE CIVIL AVIATION THEME SENSITIVITY .....  | 14 |
| MAP OF RELATIVE PALEONTOLOGY THEME SENSITIVITY .....  | 15 |
| MAP OF RELATIVE PLANT SPECIES THEME SENSITIVITY .....   | 16 |
| MAP OF RELATIVE DEFENCE THEME SENSITIVITY .....   | 17 |
| MAP OF RELATIVE TERRESTRIAL BIODIVERSITY THEME SENSITIVITY .....  | 18 |

# Proposed Project Location

## Orientation map 1: General location



## Map of proposed site and relevant area(s)



## Cadastral details of the proposed site

Property details:

| No | Farm Name             | Farm/<br>Erf No | Portion | Latitude     | Longitude    | Property Type |
|----|-----------------------|-----------------|---------|--------------|--------------|---------------|
| 1  | KAROS SETTLEMENT      | 944             | 0       | 28°31'4.54S  | 21°34'22.64E | Erven         |
| 2  | BOEGOEBERGNEDESETTING | 48              | 0       | 28°39'16.16S | 21°45'49.16E | Farm          |
| 3  | BOEGOEBERGNEDESETTING | 48              | 0       | 28°39'13.47S | 21°45'48.83E | Farm Portion  |

Development footprint<sup>1</sup> vertices:  
No development footprint(s) specified.

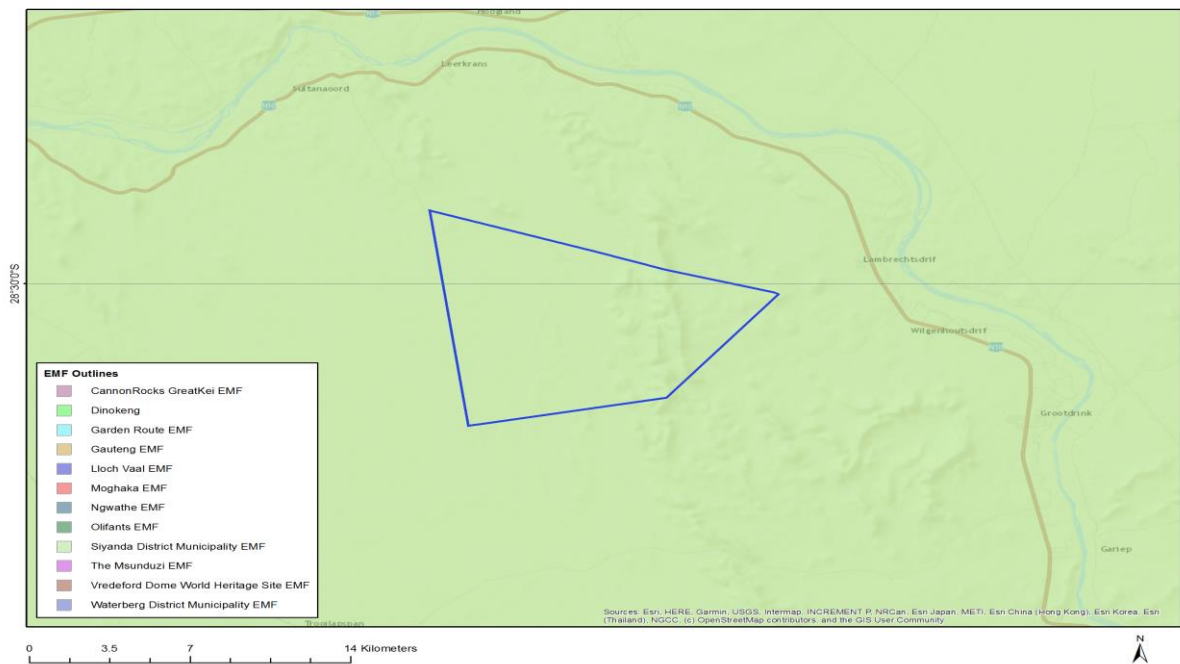
## Wind and Solar developments with an approved Environmental Authorisation or applications under consideration within 30 km of the proposed area

| No | EIA Reference No   | Classification | Status of application | Distance from proposed area (km) |
|----|--------------------|----------------|-----------------------|----------------------------------|
| 1  | 14/12/16/3/3/2/619 | Solar PV       | Approved              | 10.9                             |
| 2  | 14/12/16/3/3/2/290 | Solar PV       | Approved              | 3.3                              |
| 3  | 12/12/20/2169      | Solar PV       | Approved              | 13.3                             |
| 4  | 14/12/16/3/3/2/297 | Solar CSP      | Approved              | 3.3                              |
| 5  | 14/12/16/3/3/2/291 | Solar PV       | Approved              | 3.3                              |

<sup>1</sup> “development footprint”, means the area within the site on which the development will take place and includes all ancillary developments for example roads, power lines, boundary walls, paving etc. which require vegetation clearance or which will be disturbed and for which the application has been submitted.

|    |                    |           |          |      |
|----|--------------------|-----------|----------|------|
| 6  | 14/12/16/3/3/2/639 | Solar PV  | Approved | 10.9 |
| 7  | 14/12/16/3/3/2/292 | Solar PV  | Approved | 3.3  |
| 8  | 14/12/16/3/3/2/618 | Solar PV  | Approved | 10.9 |
| 9  | 12/12/20/2056      | Solar CSP | Approved | 0    |
| 10 | 14/12/16/3/3/2/293 | Solar CSP | Approved | 0    |
| 11 | 14/12/16/3/3/2/298 | Solar CSP | Approved | 3.3  |
| 12 | 14/12/16/3/3/2/289 | Solar PV  | Approved | 3.3  |
| 13 | 14/12/16/3/3/2/614 | Solar PV  | Approved | 11.5 |
| 14 | 14/12/16/3/3/2/821 | Solar PV  | Approved | 15   |
| 15 | 12/12/20/2146      | Solar PV  | Approved | 26.3 |
| 16 | 14/12/16/3/3/2/294 | Solar CSP | Approved | 0    |
| 17 | 14/12/16/3/3/2/296 | Solar CSP | Approved | 3.3  |

## Environmental Management Frameworks relevant to the application



| Environmental Management Framework | LINK  |
|------------------------------------|---|
| Siyanda District Municipality EMF  | <a href="https://screening.environment.gov.za/ScreeningDownloads/EMF/SIYANDA_EMF_REPORT_2008.doc">https://screening.environment.gov.za/ScreeningDownloads/EMF/SIYANDA_EMF_REPORT_2008.doc</a> |

## Environmental screening results and assessment outcomes

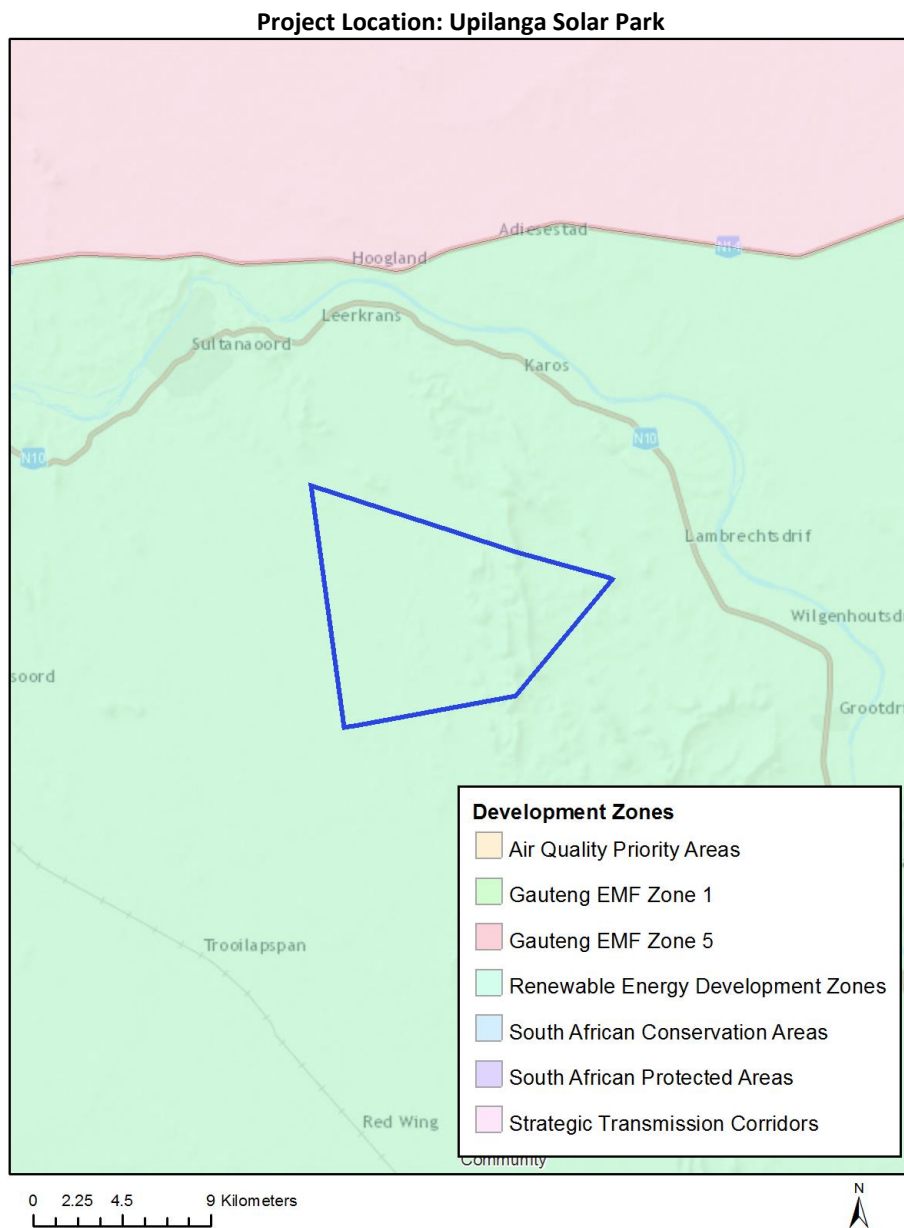
The following sections contain a summary of any development incentives, restrictions, exclusions or prohibitions that apply to the proposed development site as well as the most environmental sensitive features on the site based on the site sensitivity screening results for the application classification that was selected. The application classification selected for this report is: Any activities within or close to a watercourse | Any activities within or close to a watercourse.

## Relevant development incentives, restrictions, exclusions or prohibitions

The following development incentives, restrictions, exclusions or prohibitions and their implications that apply to this site are indicated below.

| <b>Incentive, restriction or prohibition</b>      | <b>Implication</b>  |
|---|---|
| Strategic Transmission Corridor-Northern corridor | <a href="https://screening.environment.gov.za/ScreeningDownloads/DevelopmentZones/GNR_350_of_13_April_2017.pdf">https://screening.environment.gov.za/ScreeningDownloads/DevelopmentZones/GNR_350_of_13_April_2017.pdf</a> |
| Renewable energy development zones 7-Upington     | <a href="https://screening.environment.gov.za/ScreeningDownloads/DevelopmentZones/GNR_350_of_13_April_2017.pdf">https://screening.environment.gov.za/ScreeningDownloads/DevelopmentZones/GNR_350_of_13_April_2017.pdf</a> |

Map indicating proposed development footprint within applicable development incentive, restriction, exclusion or prohibition zones



### Proposed Development Area Environmental Sensitivity

The following summary of the development site environmental sensitivities is identified. Only the highest environmental sensitivity is indicated. The footprint environmental sensitivities for the proposed development footprint as identified, are indicative only and must be verified on site by a suitably qualified person before the specialist assessments identified below can be confirmed.

| Theme                | Very High sensitivity | High sensitivity | Medium sensitivity | Low sensitivity |
|----------------------|-----------------------|------------------|--------------------|-----------------|
| Agriculture Theme    |                       |                  | X                  |                 |
| Animal Species Theme |                       |                  |                    | X               |

|  |   |   |   |   |
|--|---|---|---|---|
| Aquatic Biodiversity Theme                 | X |   |   |   |
| Archaeological and Cultural Heritage Theme |   |   | X |   |
| Civil Aviation Theme                       |   |   |   | X |
| Paleontology Theme                         |   | X |   |   |
| Plant Species Theme                        |   |   | X |   |
| Defence Theme                              |   |   | X |   |
| Terrestrial Biodiversity Theme             | X |   |   |   |

### Specialist assessments identified

Based on the selected classification, and the environmental sensitivities of the proposed development footprint, the following list of specialist assessments have been identified for inclusion in the assessment report. It is the responsibility of the EAP to confirm this list and to motivate in the assessment report, the reason for not including any of the identified specialist study including the provision of photographic evidence of the site situation.

| <b>N o</b> | <b>Specialist assessment</b>                           | <b>Assessment Protocol</b>  |
|------------|--|---|
| 1          | Landscaping/Visual Impact Assessment                   | <a href="https://screening.environment.gov.za/ScreeningDownloads/AssessmentProtocols/DraftGazetted_General_Requirement_Assessment_Protocols.pdf">https://screening.environment.gov.za/ScreeningDownloads/AssessmentProtocols/DraftGazetted_General_Requirement_Assessment_Protocols.pdf</a>           |
| 2          | Archaeological and Cultural Heritage Impact Assessment | <a href="https://screening.environment.gov.za/ScreeningDownloads/AssessmentProtocols/DraftGazetted_General_Requirement_Assessment_Protocols.pdf">https://screening.environment.gov.za/ScreeningDownloads/AssessmentProtocols/DraftGazetted_General_Requirement_Assessment_Protocols.pdf</a>           |
| 3          | Palaeontology Impact Assessment                        | <a href="https://screening.environment.gov.za/ScreeningDownloads/AssessmentProtocols/DraftGazetted_General_Requirement_Assessment_Protocols.pdf">https://screening.environment.gov.za/ScreeningDownloads/AssessmentProtocols/DraftGazetted_General_Requirement_Assessment_Protocols.pdf</a>           |
| 4          | Terrestrial Biodiversity Impact Assessment             | <a href="https://screening.environment.gov.za/ScreeningDownloads/AssessmentProtocols/DraftGazetted_Terrestrial_Biodiversity_Assessment_Protocols.pdf">https://screening.environment.gov.za/ScreeningDownloads/AssessmentProtocols/DraftGazetted_Terrestrial_Biodiversity_Assessment_Protocols.pdf</a> |
| 5          | Aquatic Biodiversity Impact Assessment                 | <a href="https://screening.environment.gov.za/ScreeningDownloads/AssessmentProtocols/DraftGazetted_Aquatic_Biodiversity_Assessment.pdf">https://screening.environment.gov.za/ScreeningDownloads/AssessmentProtocols/DraftGazetted_Aquatic_Biodiversity_Assessment.pdf</a>                             |
| 6          | Hydrology Assessment                                   | <a href="https://screening.environment.gov.za/ScreeningDownloads/AssessmentProtocols/DraftGazetted_General_Requirement_Assessment_Protocols.pdf">https://screening.environment.gov.za/ScreeningDownloads/AssessmentProtocols/DraftGazetted_General_Requirement_Assessment_Protocols.pdf</a>           |
| 7          | Socio-Economic   | <a href="https://screening.environment.gov.za/ScreeningDownloads/AssessmentProtocols">https://screening.environment.gov.za/ScreeningDownloads/AssessmentProtocols</a>   |

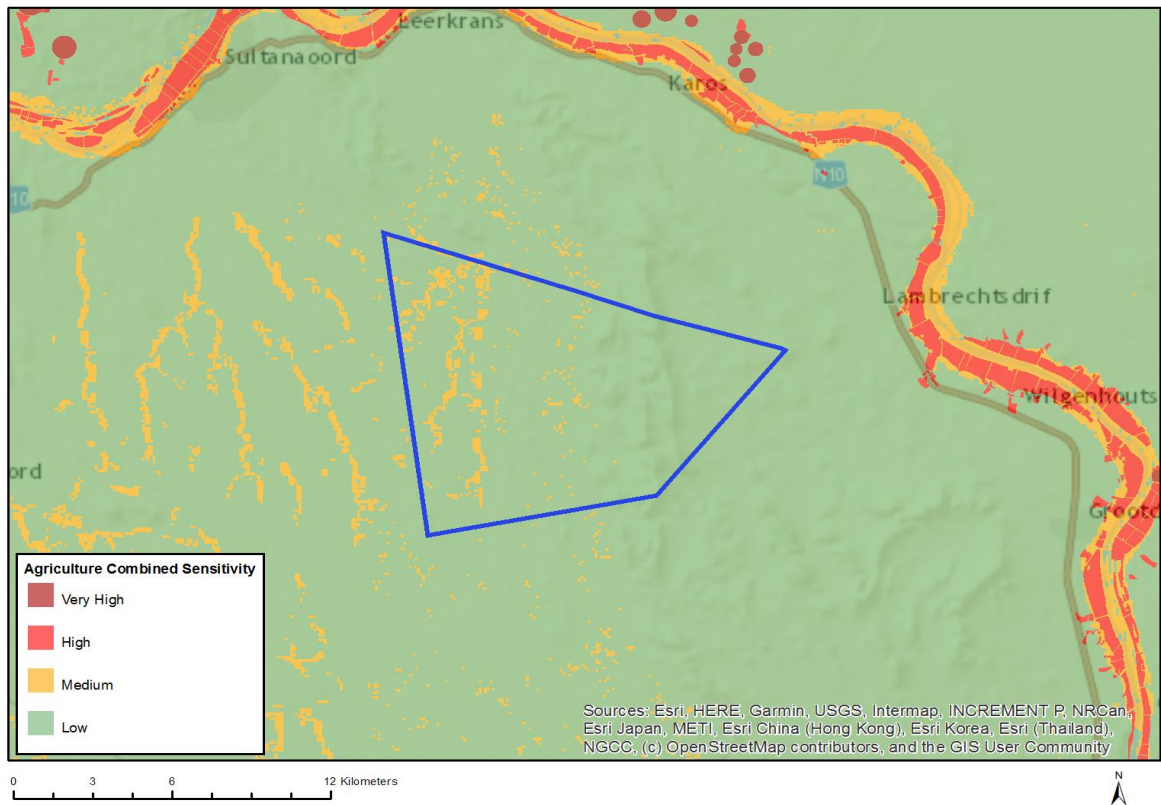


|   |                                 |   |
|---|---------------------------------|---|
|   | c<br>Assessment                 | <a href="#">/DraftGazetted_General_Requirement_Assessment_Protocols.pdf</a>   |
| 8 | Plant<br>Species<br>Assessment  | <a href="https://screening.environment.gov.za/ScreeningDownloads/AssessmentProtocols/DraftGazetted_General_Requirement_Assessment_Protocols.pdf">https://screening.environment.gov.za/ScreeningDownloads/AssessmentProtocols/DraftGazetted_General_Requirement_Assessment_Protocols.pdf</a> |
| 9 | Animal<br>Species<br>Assessment | <a href="https://screening.environment.gov.za/ScreeningDownloads/AssessmentProtocols/DraftGazetted_General_Requirement_Assessment_Protocols.pdf">https://screening.environment.gov.za/ScreeningDownloads/AssessmentProtocols/DraftGazetted_General_Requirement_Assessment_Protocols.pdf</a> |

## Results of the environmental sensitivity of the proposed area.

The following section represents the results of the screening for environmental sensitivity of the proposed site for relevant environmental themes associated with the project classification. It is the duty of the EAP to ensure that the environmental themes provided by the screening tool are comprehensive and complete for the project. Refer to the disclaimer.

### MAP OF RELATIVE AGRICULTURE THEME SENSITIVITY

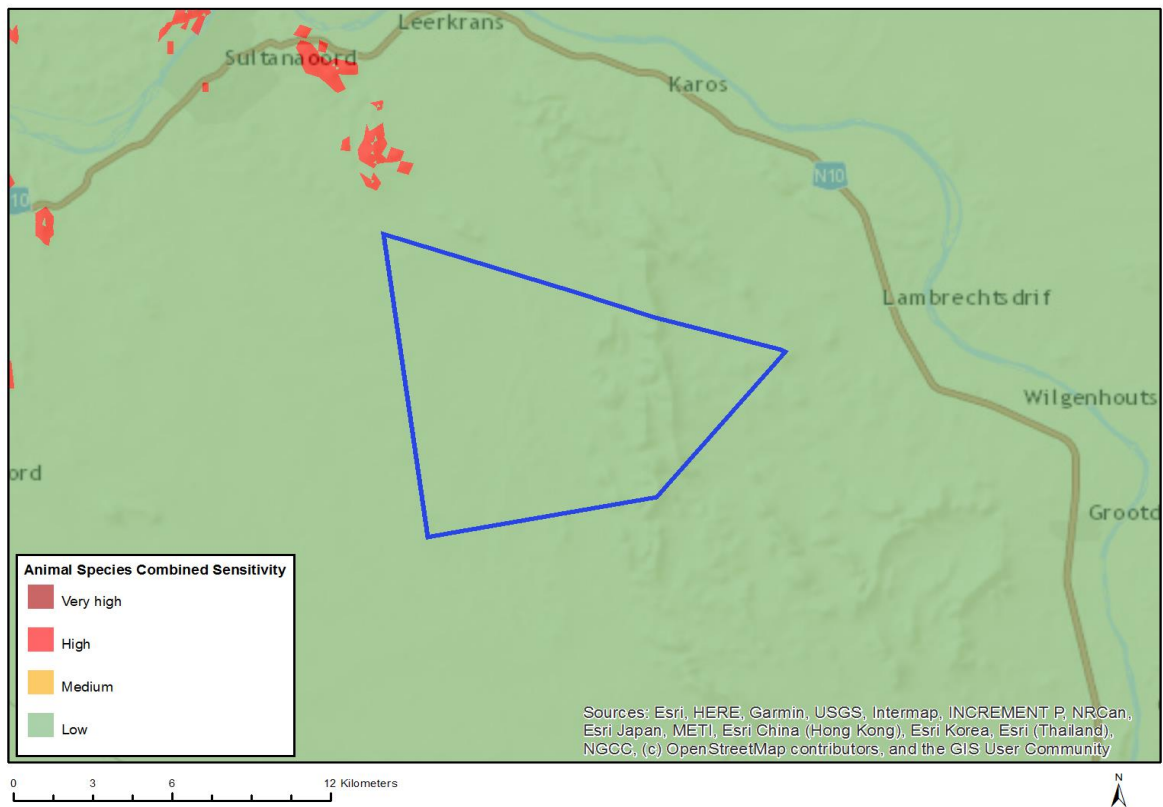


| Very High sensitivity | High sensitivity | Medium sensitivity | Low sensitivity |
|-----------------------|------------------|--------------------|-----------------|
|                       |                  | X                  |                 |

#### Sensitivity Features:

| Sensitivity | Feature(s)  |
|-------------|---|
| Low         | Land capability;01. Very low/02. Very low/03. Low-Very low/04. Low-Very low/05. Low |
| Medium      | Land capability;06. Low-Moderate/07. Low-Moderate/08. Moderate                      |

## MAP OF RELATIVE ANIMAL SPECIES THEME SENSITIVITY

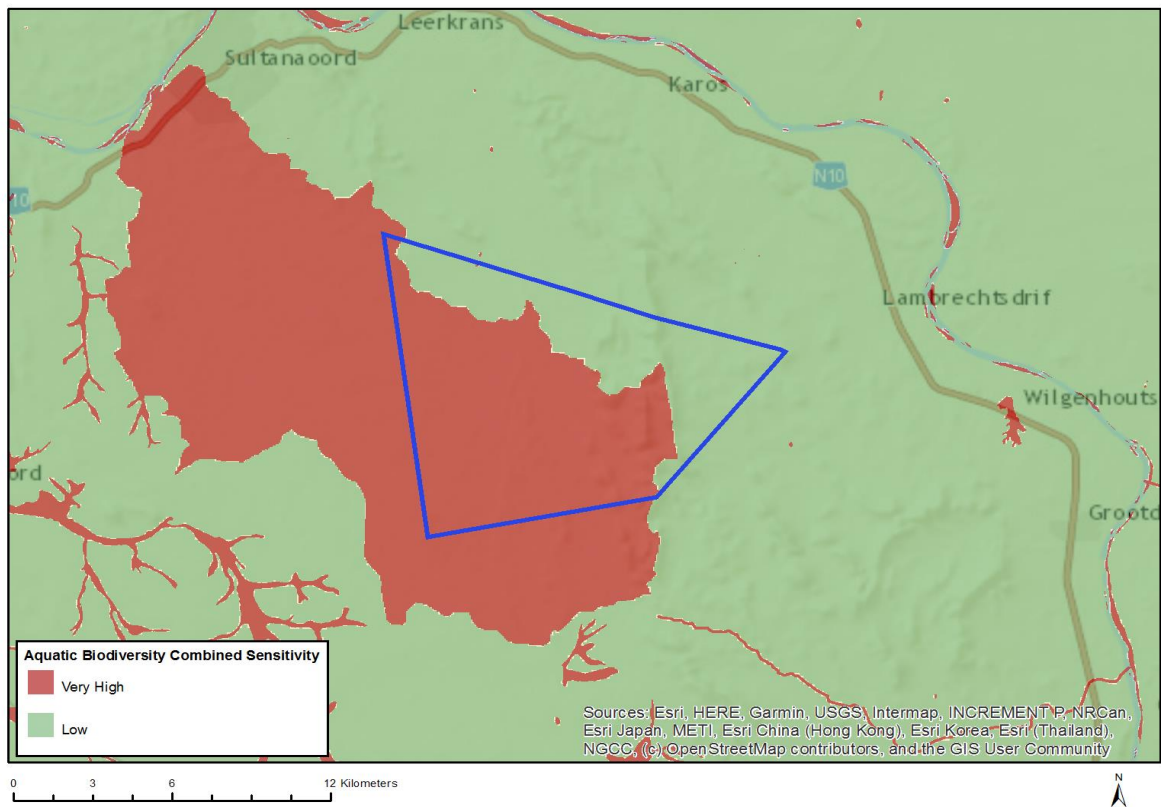


| Very High sensitivity | High sensitivity | Medium sensitivity | Low sensitivity |
|-----------------------|------------------|--------------------|-----------------|
|                       |                  |                    | X               |

### Sensitivity Features:

| Sensitivity | Feature(s)      |
|-------------|-----------------|
| Low         | Low sensitivity |

## MAP OF RELATIVE AQUATIC BIODIVERSITY THEME SENSITIVITY

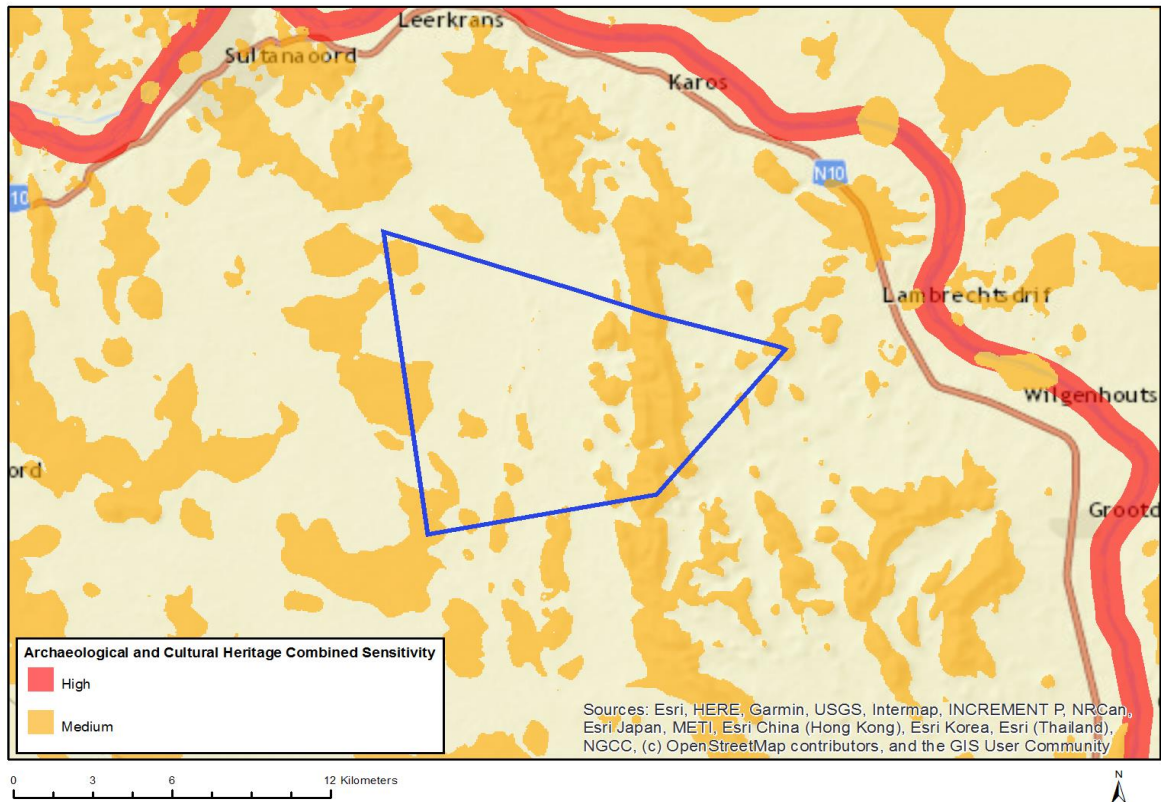


| Very High sensitivity | High sensitivity | Medium sensitivity | Low sensitivity |
|-----------------------|------------------|--------------------|-----------------|
| X                     |                  |                    |                 |

### Sensitivity Features:

| Sensitivity | Feature(s)  |
|-------------|---|
| Low         | Low sensitivity                                       |
| Very High   | Wetlands and Estuaries                                |
| Very High   | Freshwater ecosystem priority area quinary catchments |

## MAP OF RELATIVE ARCHAEOLOGICAL AND CULTURAL HERITAGE THEME SENSITIVITY

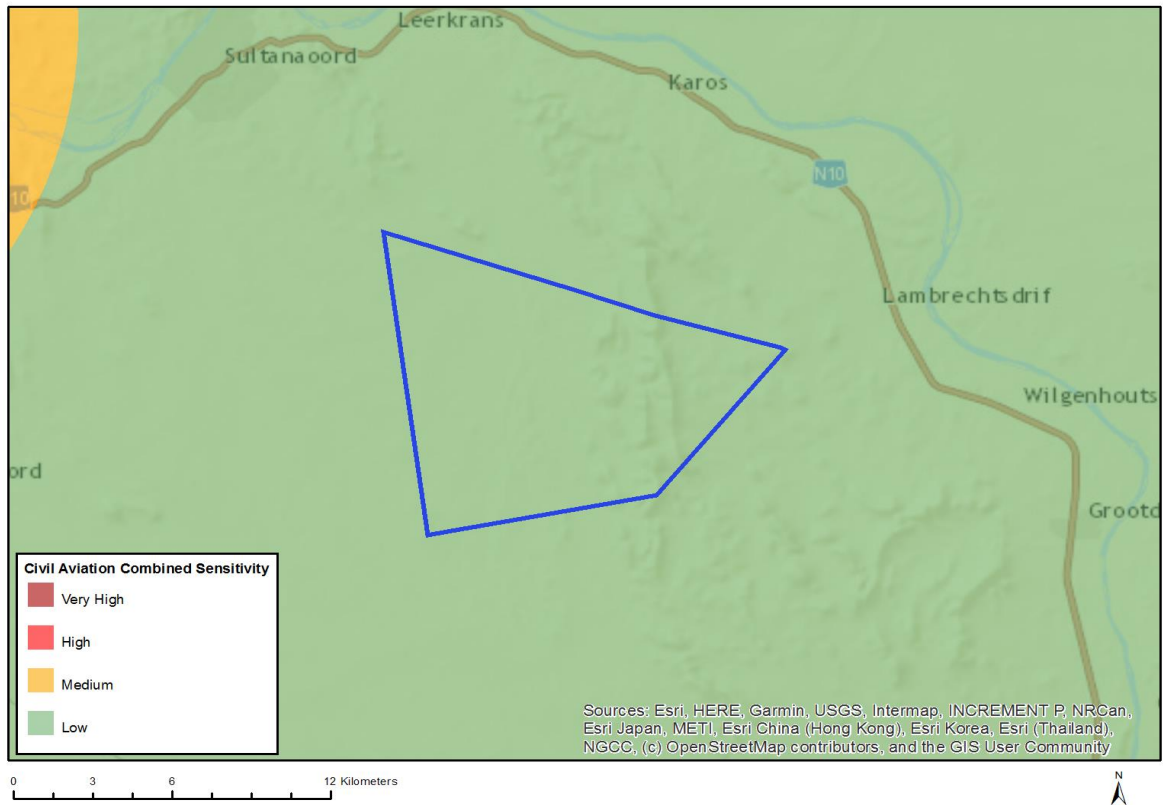


| Very High sensitivity | High sensitivity | Medium sensitivity | Low sensitivity |
|-----------------------|------------------|--------------------|-----------------|
|                       |                  | X                  |                 |

### Sensitivity Features:

| Sensitivity | Feature(s)        |
|-------------|-------------------|
| Medium      | Mountain or ridge |

## MAP OF RELATIVE CIVIL AVIATION THEME SENSITIVITY



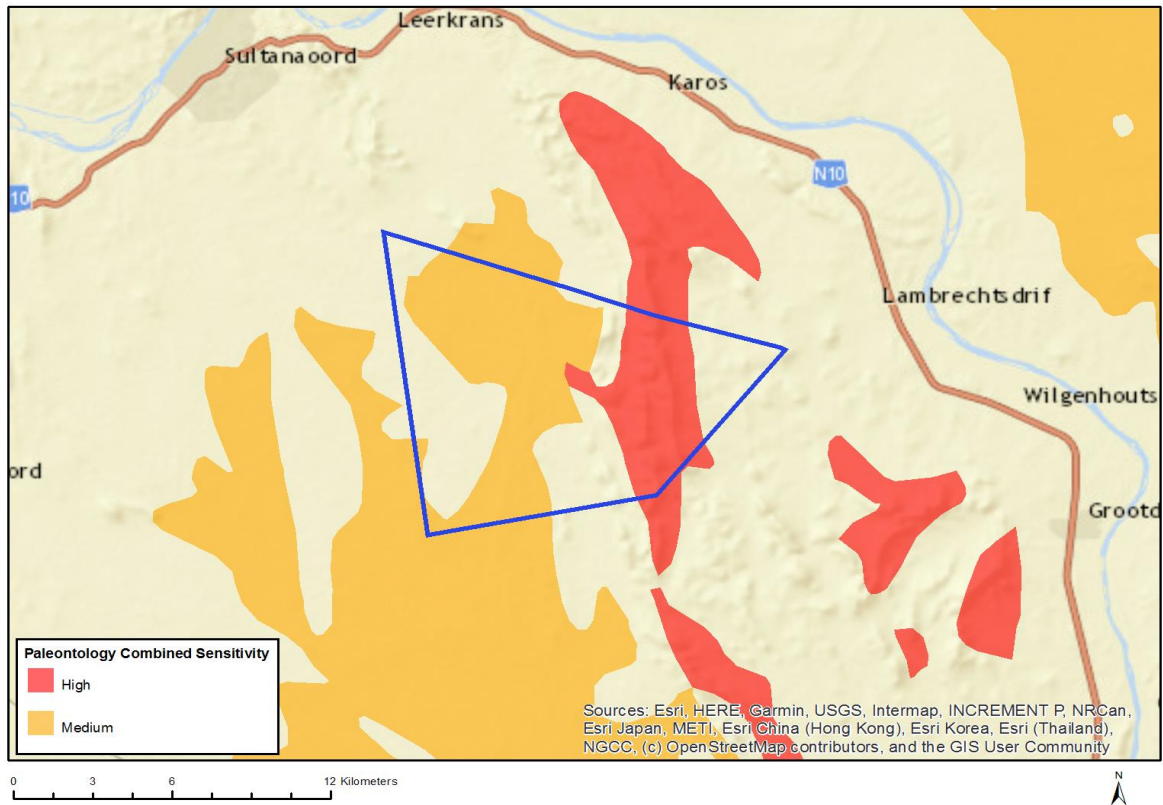
| Very High sensitivity | High sensitivity | Medium sensitivity | Low sensitivity |
|-----------------------|------------------|--------------------|-----------------|
|                       |                  |                    | X               |

### Sensitivity Features:

| Sensitivity | Feature(s)      |
|-------------|-----------------|
| Low         | Low sensitivity |



## MAP OF RELATIVE PALEONTOLOGY THEME SENSITIVITY

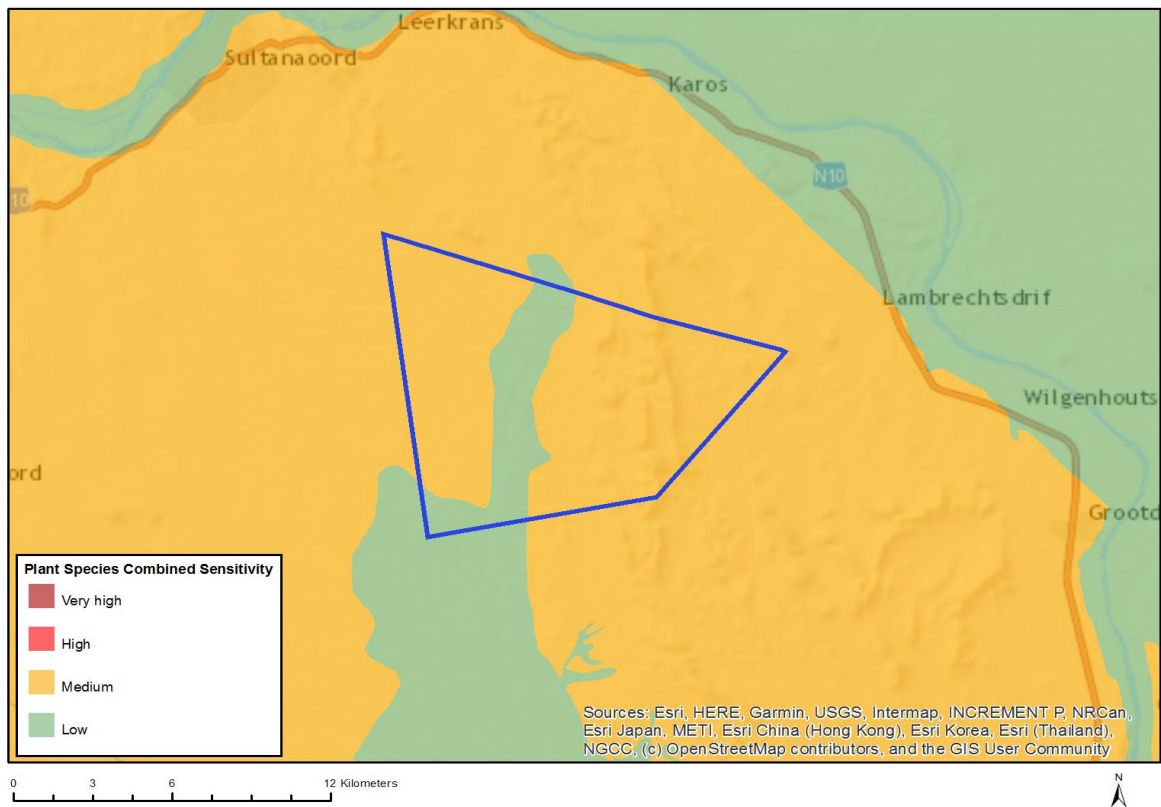


| Very High sensitivity | High sensitivity | Medium sensitivity | Low sensitivity |
|-----------------------|------------------|--------------------|-----------------|
|                       | X                |                    |                 |

### Sensitivity Features:

| Sensitivity | Feature(s)   |
|-------------|--|
| High        | Rock units with a high paleontological sensitivity   |
| Medium      | Rock units with a medium paleontological sensitivity |

## MAP OF RELATIVE PLANT SPECIES THEME SENSITIVITY



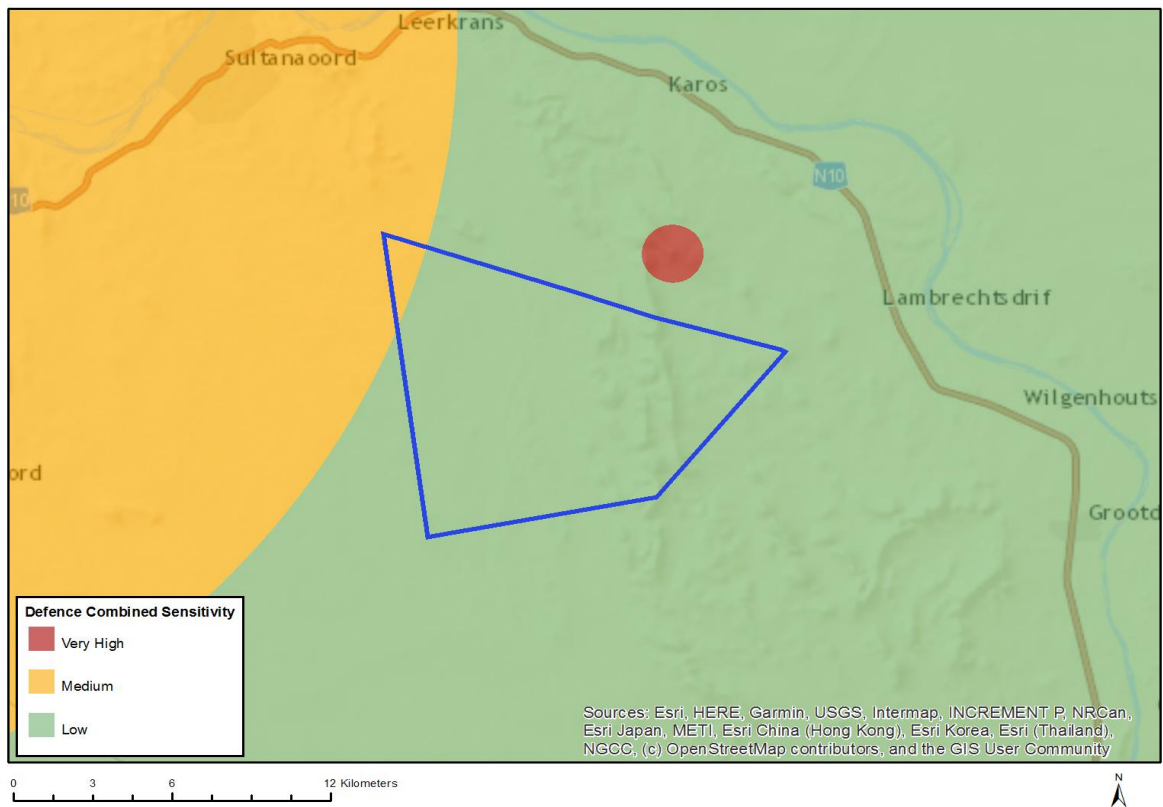
| Very High sensitivity | High sensitivity | Medium sensitivity | Low sensitivity |
|-----------------------|------------------|--------------------|-----------------|
|                       |                  | X                  |                 |

### Sensitivity Features:

| Sensitivity | Feature(s)           |
|-------------|----------------------|
| Low         | Low sensitivity      |
| Medium      | Sensitive species 44 |



## MAP OF RELATIVE DEFENCE THEME SENSITIVITY

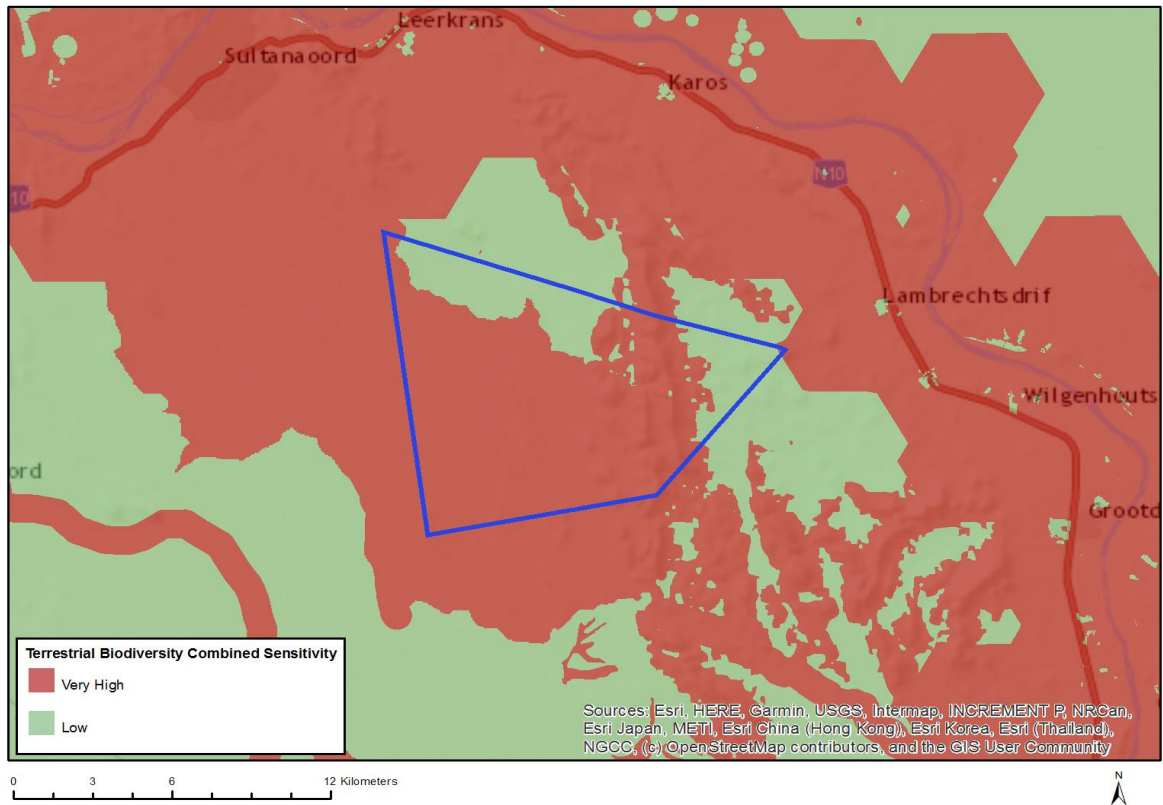


| Very High sensitivity | High sensitivity | Medium sensitivity | Low sensitivity |
|-----------------------|------------------|--------------------|-----------------|
|                       |                  | X                  |                 |

### Sensitivity Features:

| Sensitivity | Feature(s)      |
|-------------|-----------------|
| Low         | Low sensitivity |
| Medium      | Defence Site    |

## MAP OF RELATIVE TERRESTRIAL BIODIVERSITY THEME SENSITIVITY



| Very High sensitivity | High sensitivity | Medium sensitivity | Low sensitivity |
|-----------------------|------------------|--------------------|-----------------|
| X                     |                  |                    |                 |

### Sensitivity Features:

| Sensitivity | Feature(s)  |
|-------------|---|
| Low         | Low sensitivity                                       |
| Very High   | Ecological Support Area                               |
| Very High   | Freshwater ecosystem priority area quinary catchments |