

## Basic Assessment Process for the Proposed Cultivation of Less than 20 ha of Land, Located on Portion 4 of Stryd Poort No. 1136, Strydpoort Farm, within the Okhahlamba Local and uThukela District Municipality, Winterton, KwaZulu-Natal

### BACKGROUND INFORMATION DOCUMENT

September 2021



#### WHAT IS THE PURPOSE OF THIS DOCUMENT?

The purpose of this document is to:

- ◆ Inform Interested and Affected Parties (I&APs) about the proposed project, and to invite them to participate;
- ◆ Provide a brief background on the proposed project; and
- ◆ Explain the aims and objectives of the Basic Assessment Process.



#### WHAT IS THE BACKGROUND TO THIS PROJECT?

Rangeland Farming (Pty) Ltd wish to obtain Environmental Authorisation for the proposed cultivation of less than 20 ha of land, located on Portion 4 of Stryd Poort No. 1136, Strydpoort Farm, within the Okhahlamba Local and uThukela District Municipality, Winterton, KwaZulu-Natal (Refer to Figure 1, 2 and 3 below).

In terms of the National Environmental Management Act (NEMA, Act No. 107 of 1998), and the Environmental Impact Assessment (EIA) Regulations of 2014 (as amended - 2017), published in Government Notices No. R. (GNR) 324, 325 and 327, certain Listed Activities require either a Basic Assessment Process (GNR 324 and GNR 327) or a Scoping and EIA Process (GNR 325) to be undertaken in order to obtain Environmental Authorisation. The proposed project triggers the following Listed Activity which requires a Basic Assessment Process to be undertaken. It must be noted that during the process it may become apparent that additional Listed Activities are relevant to the proposed project:

Listed Notice	Part	Description
GNR 327	27	<p><i>"The clearance of an area of 1 hectares or more, but less than 20 hectares of indigenous vegetation..."</i></p> <p><b>Applicable as the proposed project comprises the cultivation of less than 20 ha of land.</b></p>

The Applicant, Rangeland Farming (Pty) Ltd, has appointed Green Door Environmental as the independent Environmental Assessment Practitioner (EAP) to undertake the Basic Assessment Process.



## **WHAT IS PROPOSED?**

---

The Applicant, Rangeland Farming (Pty) Ltd, wish to cultivate less than 20 ha of land, located on Portion 4 of Stryd Poort No. 1136, Strydpoort Farm, within the Okhahlamba Local and uThukela District Municipality, Winterton, KwaZulu-Natal.

The property is approximately 244 ha in extent. The proposed project will comprise the cultivation of several areas. Although these areas currently exceed 20 ha, once feedback from the Specialist Studies has been received, the most agriculturally viable areas will be selected which will total less than 20 ha.

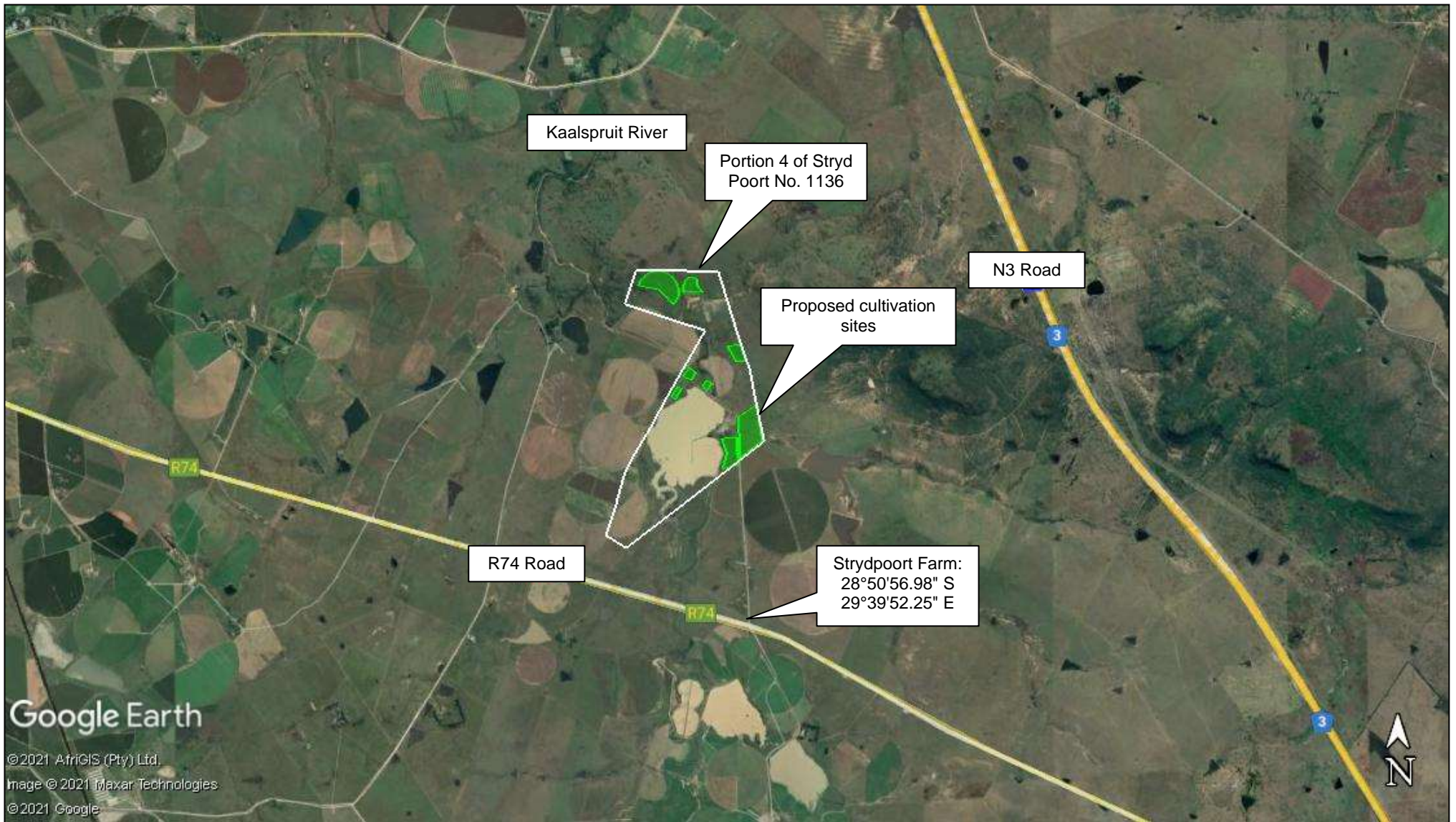
The Applicant wishes to cultivate a variety of crops on a rotational basis. These include vegetables and seed maize, and a mixture of cover crops such a wheat, oats and rye.

The follow Specialist Studies will be compiled:

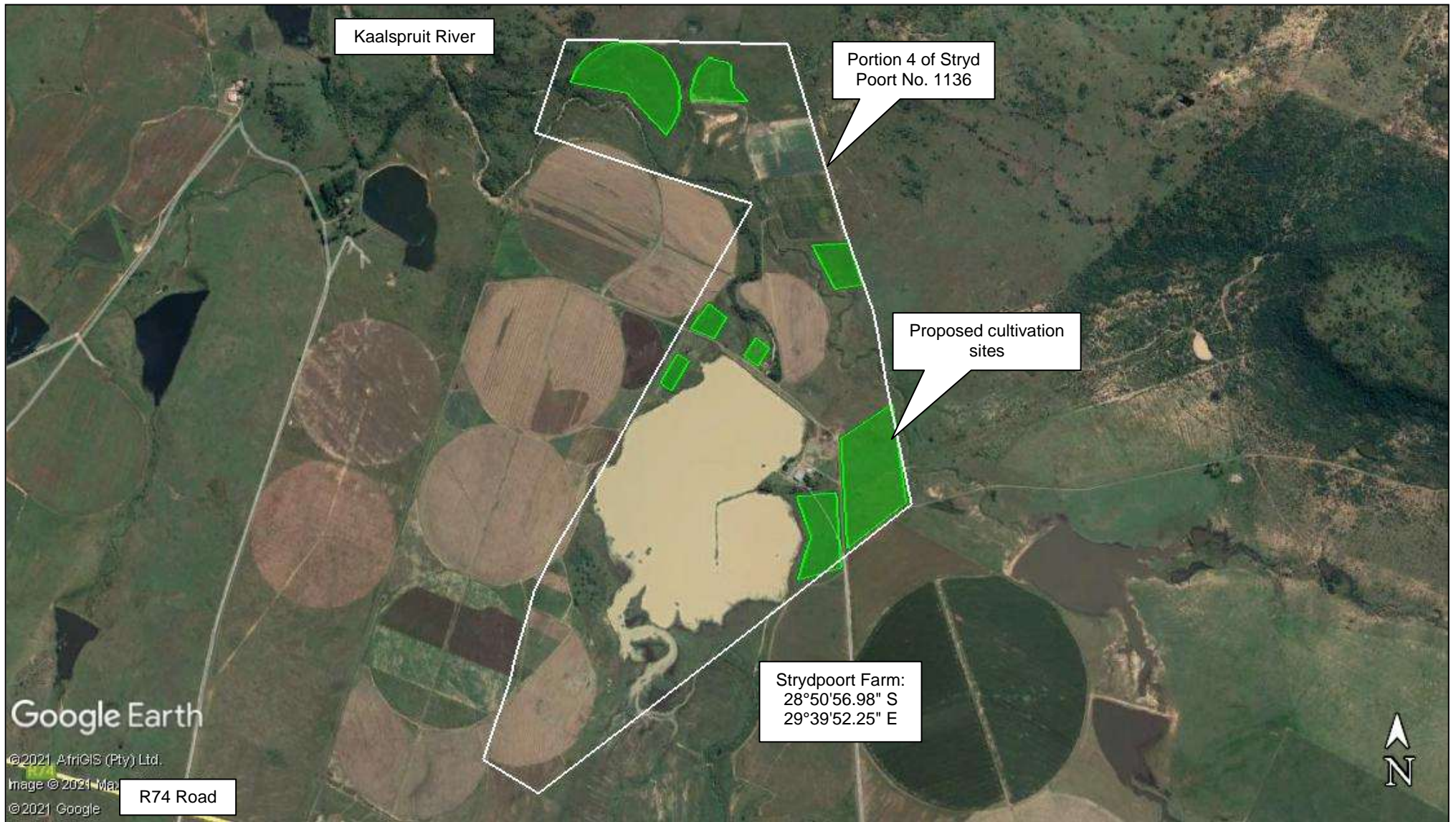
- ◆ Agricultural Potential Assessment;
- ◆ Ecological Assessment;
- ◆ Heritage Impact Assessment;
- ◆ Paleontological Impact Assessment; and
- ◆ Flood Line Assessment.



## WHERE IS THE PROPOSED PROJECT?



**Figure 1:** Locality Map showing Strydpoot Farm and surrounding area, Winterton, KwaZulu-Natal (Source: Google Earth)



**Figure 2:** Map showing Strydpoort Farm, Winterton, KwaZulu-Natal (Source: Google Earth)



## **WHAT IS THE AIM OF A BASIC ASSESSMENT PROCESS?**

---

The Basic Assessment Process aims to:

- ◆ Inform and involve all potentially Interested and Affected Parties (I&APs) of the proposed project;
- ◆ Identify the potential impacts (positive and negative) that the proposed project may have on the ecological and socio-economic environment;
- ◆ Provide recommendations based on the identified impacts, if necessary; and
- ◆ Provide the Competent Authority with enough information to make an informed decision regarding the proposed project.



## **WHAT IS INVOLVED IN THE BASIC ASSESSMENT PROCESS?**

---

The Basic Assessment Process can be described as follows:

1. Application Form:

An official Application Form is required to be completed and submitted to the Competent Authority. This form provides information on the property, a description of the activities and lists the relevant Listed Activities which are triggered.

2. Public Participation:

The general public and relevant authorities are notified of the proposed project through newspaper adverts, site posters and direct consultation. Alternative methods will be employed to inform those I&APs who may be illiterate, disabled or otherwise disadvantaged. Should you be aware of anyone who might be interested in this project, but has not been notified, please send the relevant contact details to Green Door Environmental. This Background Information Document will be circulated to neighbouring landowners, relevant authorities and any other persons registered as I&APs following the newspaper adverts and site posters.

3. Identification of Impacts and Alternatives

Environmental issues, concerns, development constraints and possible alternatives will be identified using professional judgement, project information, experience of similar projects, a review of available literature, site visits, and consultation with authorities and the public.

4. Impact Evaluation

The significance of environmental issues will be evaluated in terms of their expected extent, intensity, duration and probability of occurrence.

5. Mitigation and Management Measures

Measures to manage and minimise impacts to within acceptable levels, as well as measures to maximise the socio-economic benefits associated with the development, will be identified and recorded in the Basic Assessment Report. An Environmental Management Programme (EMPr) will be compiled to facilitate the implementation of mitigation measures, if the development is approved.

6. Reporting

The Draft Basic Assessment Report and Environmental Management Programme (EMPr) will be made available for review and comment by all I&APs and relevant authorities. A Final Basic Assessment Report and EMPr will be compiled and will include comments received on the circulated Draft Basic Assessment Report.

7. Authority Decision

The Final Basic Assessment Report will be used by DEDTEA as the basis for the decision on whether the proposed project should be approved or not. All I&APs will be informed of the decision.



## WHAT POTENTIAL ENVIRONMENTAL IMPACTS HAVE INITIALLY BEEN IDENTIFIED?

---

A proposed project of this nature has the potential to cause the following environmental impacts. These impacts will be investigated and assessed as part of the Basic Assessment Process:

- ◆ Potential impacts on watercourses and wetland systems; and
- ◆ Potential impacts on fauna and flora.



## HOW CAN I&APs COMMENT ON THIS PROJECT?

---

The need for public input and involvement is of critical importance. All I&APs (neighbours, authorities, organisations etc.) are invited to comment on the proposed project. Comments can be communicated to us by post, telephone or email (contact details are provided below).

In order to ensure that your comments are addressed and incorporated, please ensure that we have received all initial comments by **18 October 2021**.



Postal: PO Box 1170 Hilton, 3245
Physical: Block H, Quarry Office Park,
400 Old Howick Road, Hilton, 3245
Phone: 033 343 4176 Fax: 033 343 4201
Email: kerryn@greendoorgroup.co.za
Website: www.greendoorgroup.co.za

Form with fields: Title, First Name, Surname, Initials, Organisation / Property Name, Interest in project, Postal Address, Post Code, Tel Number, Cell Number, Fax Number, Email.

1. The following issues must be noted regarding the proposed cultivation of less than 20 ha of land, located on Portion 4 of Stryd Poort No. 1136, Strydpoort Farm, within the Okhahlamba Local and uThukela District Municipality, Winterton, KwaZulu-Natal.

Dotted lines for handwritten notes.

2. The following potentially Interested and Affected Parties should also be contacted:

Form with fields: Name, Organisation, Tel Number, Address for two different parties.

3. Additional comments?

Dotted lines for handwritten additional comments.

Should you be aware of anyone who might be interested in this project, but may be illiterate, disabled or otherwise disadvantaged, please send the relevant contact details to Green Door Environmental.

Thank you