

**SCREENING REPORT FOR AN ENVIRONMENTAL AUTHORIZATION OR
FOR A PART TWO AMENDMENT OF AN ENVIRONMENTAL AUTHORISATION
AS REQUIRED BY THE 2014 EIA REGULATIONS – PROPOSED DEVELOPMENT
FOOTPRINT ENVIRONMENTAL SENSITIVITY**

EIA Reference number:

Project name: Gunstfontein Battery Energy Storage System (BESS) Screening, Sutherland, Northern Cape

Project title: Gunstfontein Battery Energy Storage System (BESS) Screening, Sutherland, Northern Cape

Date screening report generated: 12/06/2020 10:22:43

Applicant: Komsberg Wind Farms (Pty) Ltd

Compiler: Savannah Environmental (Pty) Ltd

Compiler signature:

.....

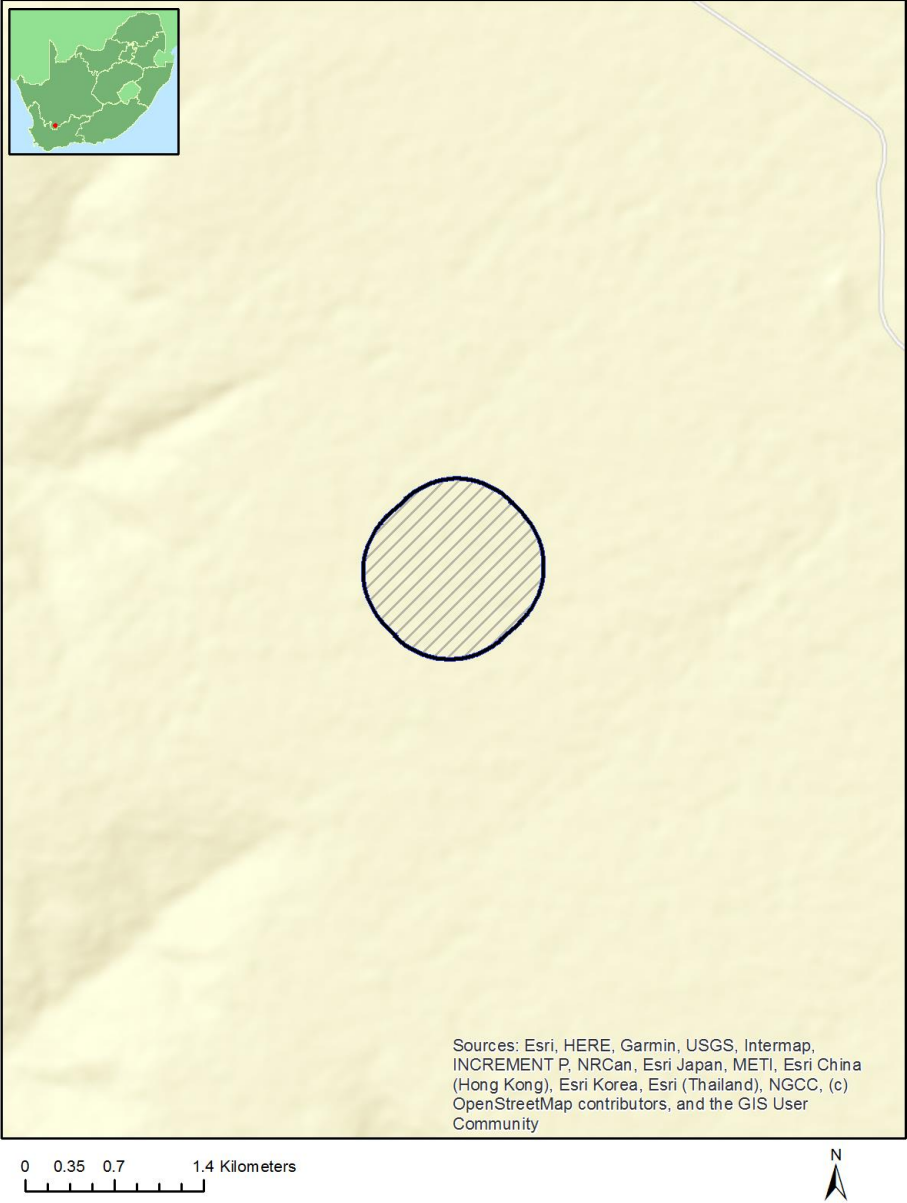
Table of Contents

Proposed Project Location	3
Orientation map 1: General location	3
Map of proposed site and relevant area(s)	4
Cadastral details of the proposed site	4
Wind and Solar developments with an approved Environmental Authorisation or applications under consideration within 30 km of the proposed area	10
Environmental Management Frameworks relevant to the application	10
Environmental screening results and assessment outcomes	10
Relevant development incentives, restrictions, exclusions or prohibitions	10
Map indicating proposed development footprint within applicable development incentive, restriction, exclusion or prohibition zones	11
Proposed Development Area Environmental Sensitivity	11
Specialist assessments identified	12
Results of the environmental sensitivity of the proposed area	14
MAP OF RELATIVE AGRICULTURE THEME SENSITIVITY	14
MAP OF RELATIVE ANIMAL SPECIES THEME SENSITIVITY	15
MAP OF RELATIVE AQUATIC BIODIVERSITY THEME SENSITIVITY	16
MAP OF RELATIVE ARCHAEOLOGICAL AND CULTURAL HERITAGE THEME SENSITIVITY	17
MAP OF RELATIVE CIVIL AVIATION THEME SENSITIVITY	18
MAP OF RELATIVE PALEONTOLOGY THEME SENSITIVITY	19
MAP OF RELATIVE PLANT SPECIES THEME SENSITIVITY	20
MAP OF RELATIVE DEFENCE THEME SENSITIVITY	21
MAP OF RELATIVE TERRESTRIAL BIODIVERSITY THEME SENSITIVITY	22

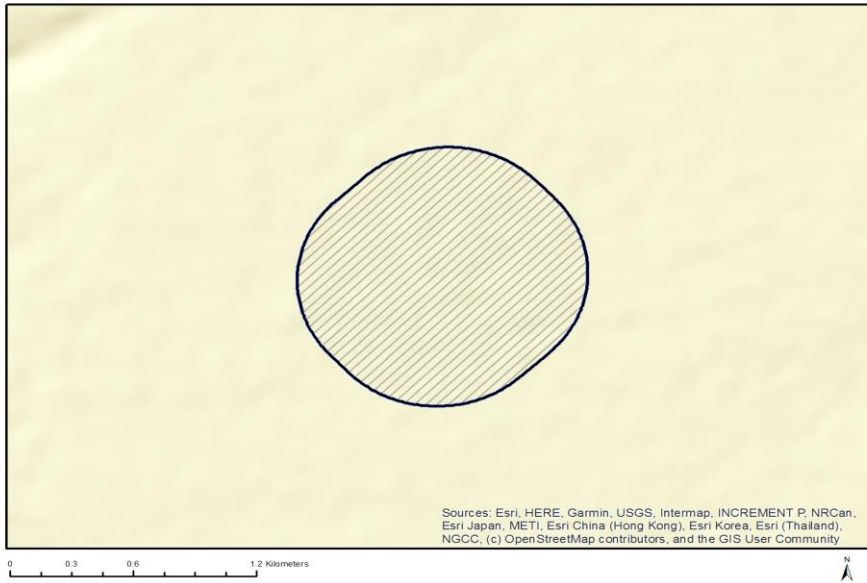
Proposed Project Location

Orientation map 1: General location

General Orientation: Gunstfontein Battery Energy Storage System (BESS) Screening, Sutherland, Northern Cape



Map of proposed site and relevant area(s)



Cadastral details of the proposed site

Property details:

No	Farm Name	Farm/ Erf No	Portion	Latitude	Longitude	Property Type
1	GUNSFONTEIN	131	0	32°34'19.68S	20°40'3.47E	Farm
2	GUNSFONTEIN	131	0	32°34'37.61S	20°40'0.84E	Farm Portion

Development footprint¹ vertices:

Footprint	Latitude	Longitude
1	32°35'0.26S	20°38'53.78E
1	32°35'0.26S	20°38'53.35E
1	32°35'0.26S	20°38'52.94E
1	32°35'0.24S	20°38'52.52E
1	32°35'0.22S	20°38'52.1E
1	32°35'0.19S	20°38'51.69E
1	32°35'0.16S	20°38'51.27E
1	32°35'0.12S	20°38'50.86E
1	32°35'0.08S	20°38'50.45E
1	32°35'0.01S	20°38'50.03E
1	32°34'59.95S	20°38'49.62E
1	32°34'59.87S	20°38'49.2E
1	32°34'59.79S	20°38'48.81E
1	32°34'59.71S	20°38'48.4E
1	32°34'59.61S	20°38'48E
1	32°34'59.5S	20°38'47.59E
1	32°34'59.39S	20°38'47.19E

¹ “development footprint”, means the area within the site on which the development will take place and includes all ancillary developments for example roads, power lines, boundary walls, paving etc. which require vegetation clearance or which will be disturbed and for which the application has been submitted.

1	32°34'59.28S	20°38'46.8E
1	32°34'59.16S	20°38'46.41E
1	32°34'59.02S	20°38'46.02E
1	32°34'58.88S	20°38'45.63E
1	32°34'58.73S	20°38'45.26E
1	32°34'58.58S	20°38'44.87E
1	32°34'58.42S	20°38'44.5E
1	32°34'58.27S	20°38'44.14E
1	32°34'58.09S	20°38'43.77E
1	32°34'57.91S	20°38'43.41E
1	32°34'57.72S	20°38'43.05E
1	32°34'57.52S	20°38'42.71E
1	32°34'57.32S	20°38'42.36E
1	32°34'57.11S	20°38'42.02E
1	32°34'56.91S	20°38'41.69E
1	32°34'56.69S	20°38'41.36E
1	32°34'56.47S	20°38'41.03E
1	32°34'56.23S	20°38'40.72E
1	32°34'56.14S	20°38'40.59E
1	32°34'55.99S	20°38'40.4E
1	32°34'55.81S	20°38'40.17E
1	32°34'55.75S	20°38'40.11E
1	32°34'55.5S	20°38'39.8E
1	32°34'55.46S	20°38'39.76E
1	32°34'55.24S	20°38'39.5E
1	32°34'55.12S	20°38'39.36E
1	32°34'54.98S	20°38'39.22E
1	32°34'52.7S	20°38'36.7E
1	32°34'52.57S	20°38'36.55E
1	32°34'52.44S	20°38'36.41E
1	32°34'52.25S	20°38'36.2E
1	32°34'52.18S	20°38'36.13E
1	32°34'51.92S	20°38'35.86E
1	32°34'51.65S	20°38'35.6E
1	32°34'51.37S	20°38'35.33E
1	32°34'51.08S	20°38'35.08E
1	32°34'50.79S	20°38'34.84E
1	32°34'50.51S	20°38'34.61E
1	32°34'50.2S	20°38'34.38E
1	32°34'49.9S	20°38'34.15E
1	32°34'49.6S	20°38'33.94E
1	32°34'49.28S	20°38'33.74E
1	32°34'48.98S	20°38'33.54E
1	32°34'48.67S	20°38'33.35E
1	32°34'48.34S	20°38'33.18E
1	32°34'48.02S	20°38'33E
1	32°34'47.69S	20°38'32.83E
1	32°34'47.36S	20°38'32.68E
1	32°34'47.03S	20°38'32.53E
1	32°34'46.7S	20°38'32.39E
1	32°34'46.36S	20°38'32.26E
1	32°34'46.03S	20°38'32.14E
1	32°34'45.69S	20°38'32.02E
1	32°34'45.34S	20°38'31.92E
1	32°34'45S	20°38'31.83E
1	32°34'44.64S	20°38'31.74E
1	32°34'44.3S	20°38'31.66E
1	32°34'43.96S	20°38'31.6E
1	32°34'43.6S	20°38'31.54E
1	32°34'43.26S	20°38'31.5E

1	32°34'42.9S	20°38'31.45E
1	32°34'42.54S	20°38'31.42E
1	32°34'42.18S	20°38'31.39E
1	32°34'41.84S	20°38'31.38E
1	32°34'41.48S	20°38'31.37E
1	32°34'41.13S	20°38'31.38E
1	32°34'40.77S	20°38'31.39E
1	32°34'40.43S	20°38'31.42E
1	32°34'40.07S	20°38'31.45E
1	32°34'39.71S	20°38'31.5E
1	32°34'39.35S	20°38'31.54E
1	32°34'39.01S	20°38'31.6E
1	32°34'38.67S	20°38'31.66E
1	32°34'38.32S	20°38'31.74E
1	32°34'37.97S	20°38'31.83E
1	32°34'37.62S	20°38'31.92E
1	32°34'37.28S	20°38'32.02E
1	32°34'36.94S	20°38'32.14E
1	32°34'36.61S	20°38'32.26E
1	32°34'36.26S	20°38'32.39E
1	32°34'35.94S	20°38'32.53E
1	32°34'35.61S	20°38'32.68E
1	32°34'35.28S	20°38'32.83E
1	32°34'34.95S	20°38'33E
1	32°34'34.63S	20°38'33.18E
1	32°34'34.3S	20°38'33.35E
1	32°34'33.99S	20°38'33.54E
1	32°34'33.67S	20°38'33.74E
1	32°34'33.37S	20°38'33.94E
1	32°34'33.07S	20°38'34.16E
1	32°34'32.76S	20°38'34.38E
1	32°34'32.46S	20°38'34.61E
1	32°34'32.17S	20°38'34.84E
1	32°34'31.88S	20°38'35.08E
1	32°34'31.6S	20°38'35.34E
1	32°34'31.32S	20°38'35.6E
1	32°34'31.05S	20°38'35.86E
1	32°34'30.79S	20°38'36.13E
1	32°34'30.66S	20°38'36.25E
1	32°34'30.52S	20°38'36.42E
1	32°34'30.29S	20°38'36.66E
1	32°34'30.26S	20°38'36.7E
1	32°34'30S	20°38'36.99E
1	32°34'29.93S	20°38'37.08E
1	32°34'29.76S	20°38'37.29E
1	32°34'29.58S	20°38'37.52E
1	32°34'29.52S	20°38'37.6E
1	32°34'26.13S	20°38'41.93E
1	32°34'25.94S	20°38'42.15E
1	32°34'25.88S	20°38'42.23E
1	32°34'25.68S	20°38'42.5E
1	32°34'25.64S	20°38'42.54E
1	32°34'25.42S	20°38'42.86E
1	32°34'25.2S	20°38'43.18E
1	32°34'24.98S	20°38'43.51E
1	32°34'24.76S	20°38'43.85E
1	32°34'24.55S	20°38'44.19E
1	32°34'24.36S	20°38'44.54E
1	32°34'24.15S	20°38'44.88E
1	32°34'23.97S	20°38'45.24E

1	32°34'23.78S	20°38'45.59E
1	32°34'23.62S	20°38'45.96E
1	32°34'23.45S	20°38'46.33E
1	32°34'23.29S	20°38'46.7E
1	32°34'23.14S	20°38'47.08E
1	32°34'22.99S	20°38'47.46E
1	32°34'22.85S	20°38'47.85E
1	32°34'22.71S	20°38'48.24E
1	32°34'22.6S	20°38'48.63E
1	32°34'22.48S	20°38'49.02E
1	32°34'22.37S	20°38'49.42E
1	32°34'22.26S	20°38'49.82E
1	32°34'22.16S	20°38'50.22E
1	32°34'22.08S	20°38'50.62E
1	32°34'22S	20°38'51.03E
1	32°34'21.93S	20°38'51.44E
1	32°34'21.86S	20°38'51.85E
1	32°34'21.8S	20°38'52.26E
1	32°34'21.76S	20°38'52.68E
1	32°34'21.71S	20°38'53.1E
1	32°34'21.68S	20°38'53.51E
1	32°34'21.65S	20°38'53.93E
1	32°34'21.64S	20°38'54.34E
1	32°34'21.63S	20°38'54.76E
1	32°34'21.61S	20°38'55.19E
1	32°34'21.63S	20°38'55.6E
1	32°34'21.64S	20°38'56.02E
1	32°34'21.65S	20°38'56.43E
1	32°34'21.68S	20°38'56.85E
1	32°34'21.71S	20°38'57.27E
1	32°34'21.76S	20°38'57.68E
1	32°34'21.8S	20°38'58.1E
1	32°34'21.86S	20°38'58.52E
1	32°34'21.93S	20°38'58.91E
1	32°34'22S	20°38'59.33E
1	32°34'22.08S	20°38'59.73E
1	32°34'22.16S	20°39'0.14E
1	32°34'22.26S	20°39'0.54E
1	32°34'22.37S	20°39'0.95E
1	32°34'22.48S	20°39'1.34E
1	32°34'22.6S	20°39'1.74E
1	32°34'22.71S	20°39'2.13E
1	32°34'22.85S	20°39'2.51E
1	32°34'22.99S	20°39'2.9E
1	32°34'23.14S	20°39'3.28E
1	32°34'23.29S	20°39'3.67E
1	32°34'23.45S	20°39'4.04E
1	32°34'23.62S	20°39'4.4E
1	32°34'23.78S	20°39'4.76E
1	32°34'23.97S	20°39'5.13E
1	32°34'24.15S	20°39'5.48E
1	32°34'24.36S	20°39'5.83E
1	32°34'24.55S	20°39'6.18E
1	32°34'24.76S	20°39'6.51E
1	32°34'24.98S	20°39'6.85E
1	32°34'25.2S	20°39'7.18E
1	32°34'25.42S	20°39'7.5E
1	32°34'25.65S	20°39'7.82E
1	32°34'25.73S	20°39'7.94E
1	32°34'25.88S	20°39'8.14E

1	32°34'26.06S	20°39'8.36E
1	32°34'26.13S	20°39'8.43E
1	32°34'26.36S	20°39'8.73E
1	32°34'26.4S	20°39'8.78E
1	32°34'26.62S	20°39'9.03E
1	32°34'26.76S	20°39'9.18E
1	32°34'26.89S	20°39'9.32E
1	32°34'29.17S	20°39'11.84E
1	32°34'29.3S	20°39'11.99E
1	32°34'29.43S	20°39'12.12E
1	32°34'29.63S	20°39'12.34E
1	32°34'29.69S	20°39'12.4E
1	32°34'29.96S	20°39'12.67E
1	32°34'30.24S	20°39'12.94E
1	32°34'30.51S	20°39'13.2E
1	32°34'30.79S	20°39'13.46E
1	32°34'31.07S	20°39'13.7E
1	32°34'31.38S	20°39'13.93E
1	32°34'31.66S	20°39'14.16E
1	32°34'31.97S	20°39'14.38E
1	32°34'32.28S	20°39'14.6E
1	32°34'32.58S	20°39'14.8E
1	32°34'32.9S	20°39'14.99E
1	32°34'33.2S	20°39'15.19E
1	32°34'33.53S	20°39'15.36E
1	32°34'33.85S	20°39'15.54E
1	32°34'34.18S	20°39'15.7E
1	32°34'34.51S	20°39'15.85E
1	32°34'34.84S	20°39'16.01E
1	32°34'35.17S	20°39'16.15E
1	32°34'35.51S	20°39'16.27E
1	32°34'35.84S	20°39'16.4E
1	32°34'36.18S	20°39'16.51E
1	32°34'36.54S	20°39'16.62E
1	32°34'36.87S	20°39'16.7E
1	32°34'37.23S	20°39'16.79E
1	32°34'37.57S	20°39'16.88E
1	32°34'37.93S	20°39'16.94E
1	32°34'38.27S	20°39'16.99E
1	32°34'38.63S	20°39'17.05E
1	32°34'38.97S	20°39'17.09E
1	32°34'39.33S	20°39'17.12E
1	32°34'39.68S	20°39'17.14E
1	32°34'40.04S	20°39'17.16E
1	32°34'40.38S	20°39'17.16E
1	32°34'40.74S	20°39'17.16E
1	32°34'41.1S	20°39'17.14E
1	32°34'41.46S	20°39'17.12E
1	32°34'41.81S	20°39'17.09E
1	32°34'42.16S	20°39'17.05E
1	32°34'42.51S	20°39'16.99E
1	32°34'42.86S	20°39'16.94E
1	32°34'43.21S	20°39'16.88E
1	32°34'43.56S	20°39'16.79E
1	32°34'43.9S	20°39'16.7E
1	32°34'44.24S	20°39'16.62E
1	32°34'44.59S	20°39'16.51E
1	32°34'44.93S	20°39'16.4E
1	32°34'45.27S	20°39'16.27E
1	32°34'45.6S	20°39'16.15E

1	32°34'45.95S	20°39'16.01E
1	32°34'46.26S	20°39'15.85E
1	32°34'46.61S	20°39'15.7E
1	32°34'46.94S	20°39'15.54E
1	32°34'47.25S	20°39'15.37E
1	32°34'47.57S	20°39'15.19E
1	32°34'47.88S	20°39'14.99E
1	32°34'48.2S	20°39'14.8E
1	32°34'48.5S	20°39'14.6E
1	32°34'48.82S	20°39'14.38E
1	32°34'49.11S	20°39'14.16E
1	32°34'49.41S	20°39'13.93E
1	32°34'49.71S	20°39'13.7E
1	32°34'49.98S	20°39'13.46E
1	32°34'50.27S	20°39'13.2E
1	32°34'50.55S	20°39'12.94E
1	32°34'50.82S	20°39'12.67E
1	32°34'51.1S	20°39'12.4E
1	32°34'51.21S	20°39'12.28E
1	32°34'51.36S	20°39'12.12E
1	32°34'51.58S	20°39'11.88E
1	32°34'51.6S	20°39'11.84E
1	32°34'51.87S	20°39'11.55E
1	32°34'51.95S	20°39'11.46E
1	32°34'52.11S	20°39'11.25E
1	32°34'52.29S	20°39'11.02E
1	32°34'52.36S	20°39'10.95E
1	32°34'55.75S	20°39'6.61E
1	32°34'55.93S	20°39'6.38E
1	32°34'55.99S	20°39'6.31E
1	32°34'56.21S	20°39'6.04E
1	32°34'56.23S	20°39'6E
1	32°34'56.47S	20°39'5.68E
1	32°34'56.69S	20°39'5.35E
1	32°34'56.91S	20°39'5.03E
1	32°34'57.11S	20°39'4.69E
1	32°34'57.32S	20°39'4.35E
1	32°34'57.52S	20°39'4.01E
1	32°34'57.72S	20°39'3.65E
1	32°34'57.91S	20°39'3.3E
1	32°34'58.09S	20°39'2.94E
1	32°34'58.27S	20°39'2.58E
1	32°34'58.42S	20°39'2.21E
1	32°34'58.58S	20°39'1.84E
1	32°34'58.73S	20°39'1.45E
1	32°34'58.88S	20°39'1.08E
1	32°34'59.02S	20°39'0.7E
1	32°34'59.16S	20°39'0.31E
1	32°34'59.28S	20°38'59.91E
1	32°34'59.39S	20°38'59.52E
1	32°34'59.5S	20°38'59.12E
1	32°34'59.61S	20°38'58.72E
1	32°34'59.71S	20°38'58.32E
1	32°34'59.79S	20°38'57.91E
1	32°34'59.87S	20°38'57.51E
1	32°34'59.95S	20°38'57.1E
1	32°35'0.01S	20°38'56.69E
1	32°35'0.08S	20°38'56.27E
1	32°35'0.12S	20°38'55.86E
1	32°35'0.16S	20°38'55.44E

1	32°35'0.19S	20°38'55.03E
1	32°35'0.22S	20°38'54.61E
1	32°35'0.24S	20°38'54.2E
1	32°35'0.26S	20°38'53.78E

Wind and Solar developments with an approved Environmental Authorisation or applications under consideration within 30 km of the proposed area

No	EIA Reference No	Classification	Status of application	Distance from proposed area (km)
1	12/12/20/2235	Solar PV	Approved	9.1

Environmental Management Frameworks relevant to the application

No intersections with EMF areas found.

Environmental screening results and assessment outcomes

The following sections contain a summary of any development incentives, restrictions, exclusions or prohibitions that apply to the proposed development footprint as well as the most environmental sensitive features on the footprint based on the footprint sensitivity screening results for the application classification that was selected. The application classification selected for this report is:

Any activities within or close to a watercourse | Any activities within or close to a watercourse.

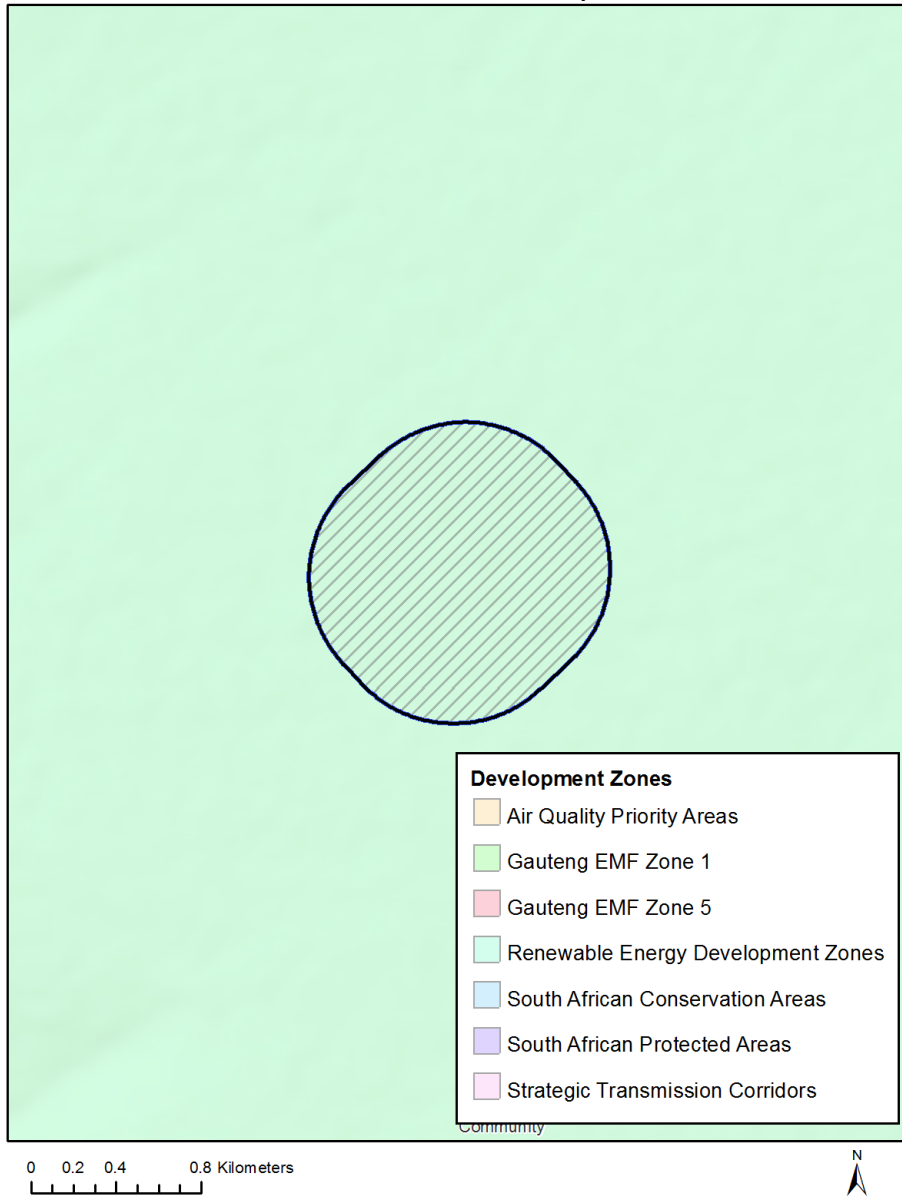
Relevant development incentives, restrictions, exclusions or prohibitions

The following development incentives, restrictions, exclusions or prohibitions and their implications that apply to this footprint are indicated below.

Incentive, restriction or prohibition	Implication
Strategic Transmission Corridor-Central corridor	https://screening.environment.gov.za/ScreeningDownloads/DevelopmentZones/GNR_350_of_13_April_2017.pdf
Renewable energy development zones 2-Komsberg	https://screening.environment.gov.za/ScreeningDownloads/DevelopmentZones/GNR_350_of_13_April_2017.pdf

Map indicating proposed development footprint within applicable development incentive, restriction, exclusion or prohibition zones

Project Location: Gunstfontein Battery Energy Storage System (BESS) Screening, Sutherland, Northern Cape



Proposed Development Area Environmental Sensitivity

The following summary of the development footprint environmental sensitivities is identified. Only the highest environmental sensitivity is indicated. The footprint environmental sensitivities for the proposed development footprint as identified, are indicative only and must be verified on site by a suitably qualified person before the specialist assessments identified below can be confirmed.

Theme	Very High	High	Medium	Low
-------	-----------	------	--------	-----

	sensitivity	sensitivity	sensitivity	sensitivity
Agriculture Theme			X	
Animal Species Theme				X
Aquatic Biodiversity Theme	X			
Archaeological and Cultural Heritage Theme			X	
Civil Aviation Theme			X	
Paleontology Theme		X		
Plant Species Theme			X	
Defence Theme				X
Terrestrial Biodiversity Theme	X			

Specialist assessments identified

Based on the selected classification, and the environmental sensitivities of the proposed development footprint, the following list of specialist assessments have been identified for inclusion in the assessment report. It is the responsibility of the EAP to confirm this list and to motivate in the assessment report, the reason for not including any of the identified specialist study including the provision of photographic evidence of the footprint situation.

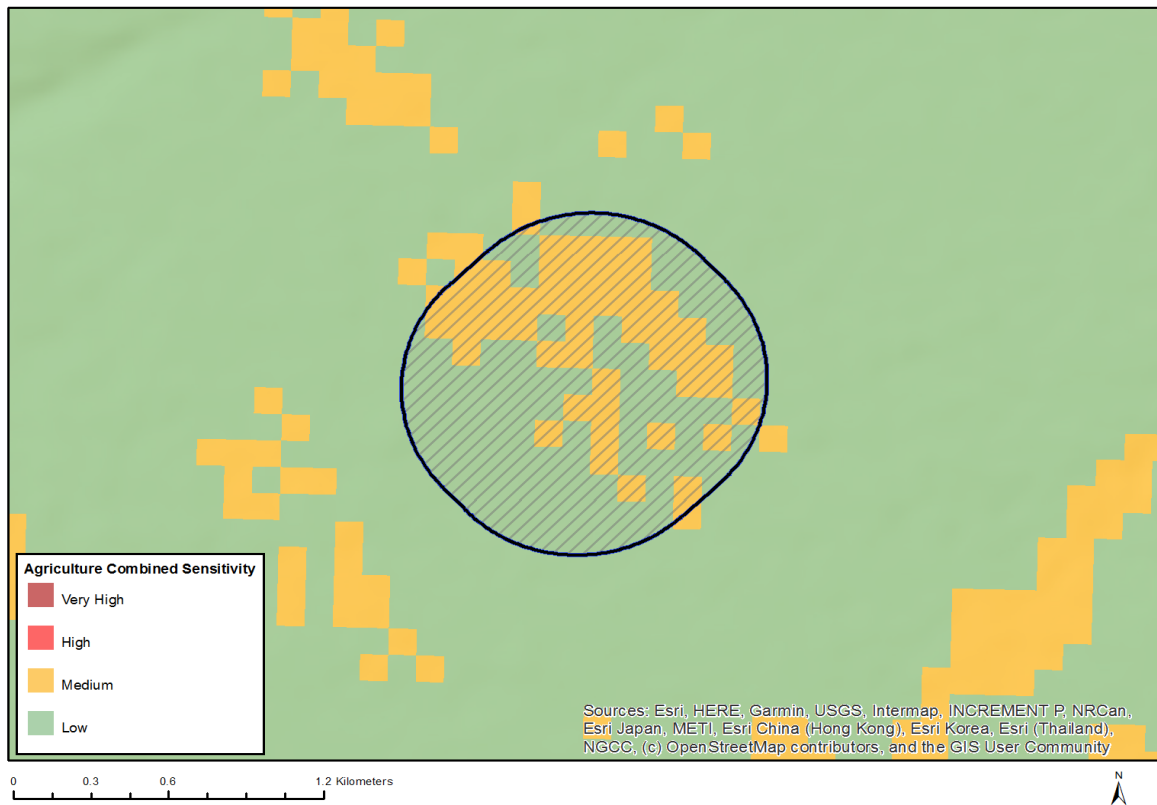
N o	Specialist assessment	Assessment Protocol
1	Landscape/Visual Impact Assessment	https://screening.environment.gov.za/ScreeningDownloads/AssessmentProtocols/DraftGazetted_General_Requirement_Assessment_Protocols.pdf
2	Archaeological and Cultural Heritage Impact Assessment	https://screening.environment.gov.za/ScreeningDownloads/AssessmentProtocols/DraftGazetted_General_Requirement_Assessment_Protocols.pdf
3	Palaeontology Impact Assessment	https://screening.environment.gov.za/ScreeningDownloads/AssessmentProtocols/DraftGazetted_General_Requirement_Assessment_Protocols.pdf
4	Terrestrial Biodiversity Impact Assessment	https://screening.environment.gov.za/ScreeningDownloads/AssessmentProtocols/DraftGazetted_Terrestrial_Biodiversity_Assessment_Protocols.pdf
5	Aquatic Biodiversity Impact Assessment	https://screening.environment.gov.za/ScreeningDownloads/AssessmentProtocols/DraftGazetted_Aquatic_Biodiversity_Assessment.pdf
6	Hydrology	https://screening.environment.gov.za/ScreeningDownloads/AssessmentProtocols/DraftGazetted_General_Requirement_Assessment_Protocols.pdf

	Assessment	
7	Socio-Economic Assessment	https://screening.environment.gov.za/ScreeningDownloads/AssessmentProtocols/DraftGazetted_General_Requirement_Assessment_Protocols.pdf
8	Plant Species Assessment	https://screening.environment.gov.za/ScreeningDownloads/AssessmentProtocols/DraftGazetted_General_Requirement_Assessment_Protocols.pdf
9	Animal Species Assessment	https://screening.environment.gov.za/ScreeningDownloads/AssessmentProtocols/DraftGazetted_General_Requirement_Assessment_Protocols.pdf

Results of the environmental sensitivity of the proposed area.

The following section represents the results of the screening for environmental sensitivity of the proposed footprint for relevant environmental themes associated with the project classification. It is the duty of the EAP to ensure that the environmental themes provided by the screening tool are comprehensive and complete for the project. Refer to the disclaimer.

MAP OF RELATIVE AGRICULTURE THEME SENSITIVITY

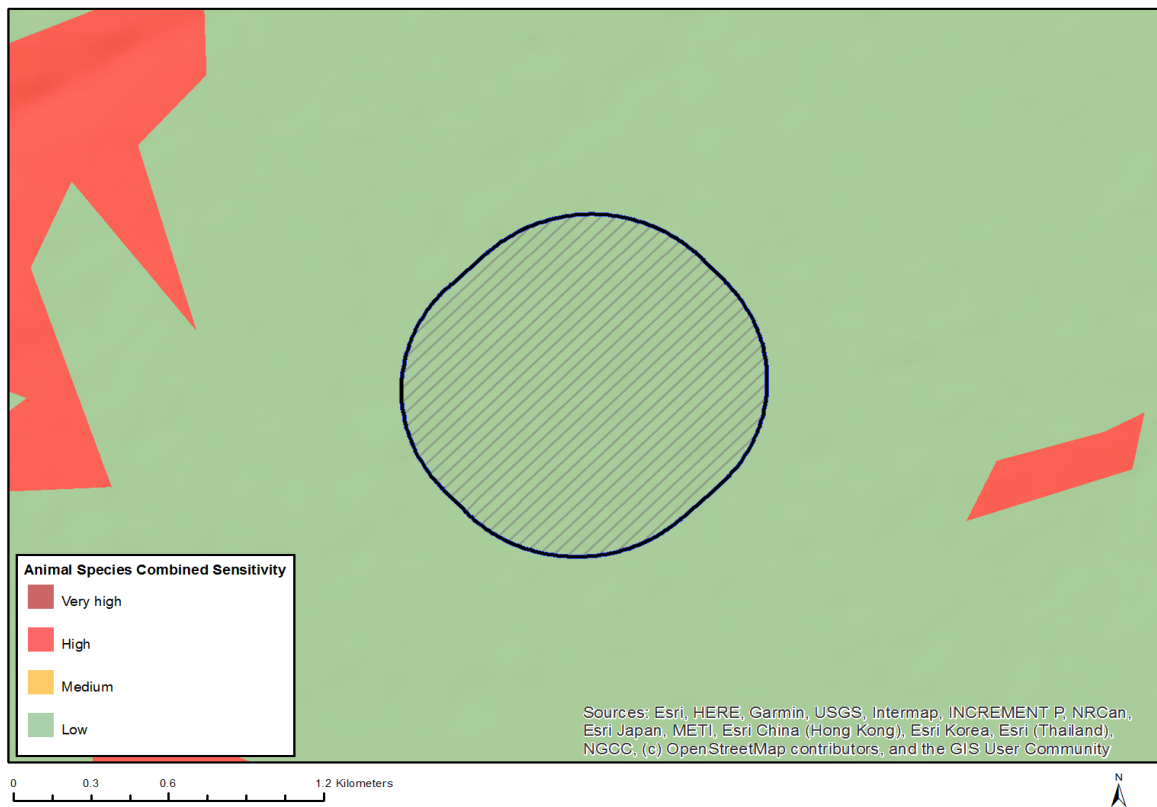


Very High sensitivity	High sensitivity	Medium sensitivity	Low sensitivity
		X	

Sensitivity Features:

Sensitivity	Feature(s)
Low	Land capability;01. Very low/02. Very low/03. Low-Very low/04. Low-Very low/05. Low
Medium	Land capability;06. Low-Moderate/07. Low-Moderate/08. Moderate

MAP OF RELATIVE ANIMAL SPECIES THEME SENSITIVITY



Very High sensitivity	High sensitivity	Medium sensitivity	Low sensitivity
			X

Sensitivity Features:

Sensitivity	Feature(s)
Low	Low sensitivity

MAP OF RELATIVE AQUATIC BIODIVERSITY THEME SENSITIVITY

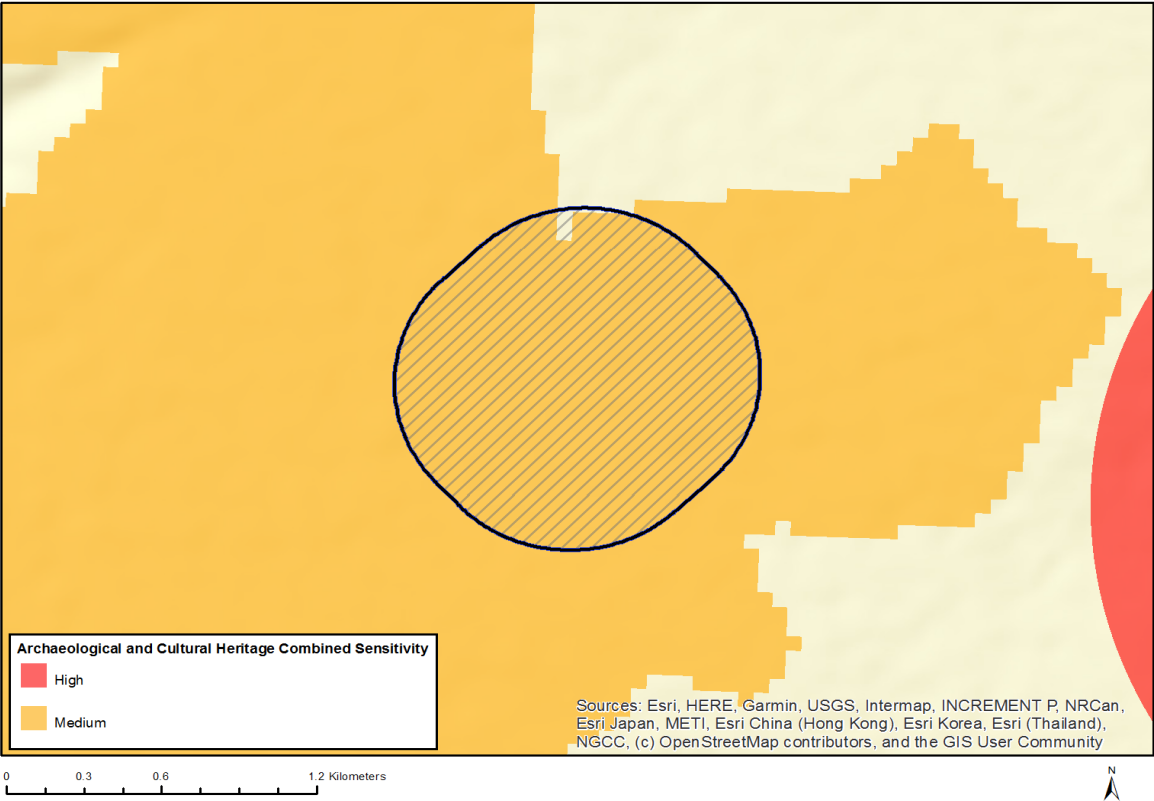


Very High sensitivity	High sensitivity	Medium sensitivity	Low sensitivity
X			

Sensitivity Features:

Sensitivity	Feature(s)
Low	Low sensitivity
Very High	Freshwater ecosystem priority area quinary catchments

MAP OF RELATIVE ARCHAEOLOGICAL AND CULTURAL HERITAGE THEME SENSITIVITY

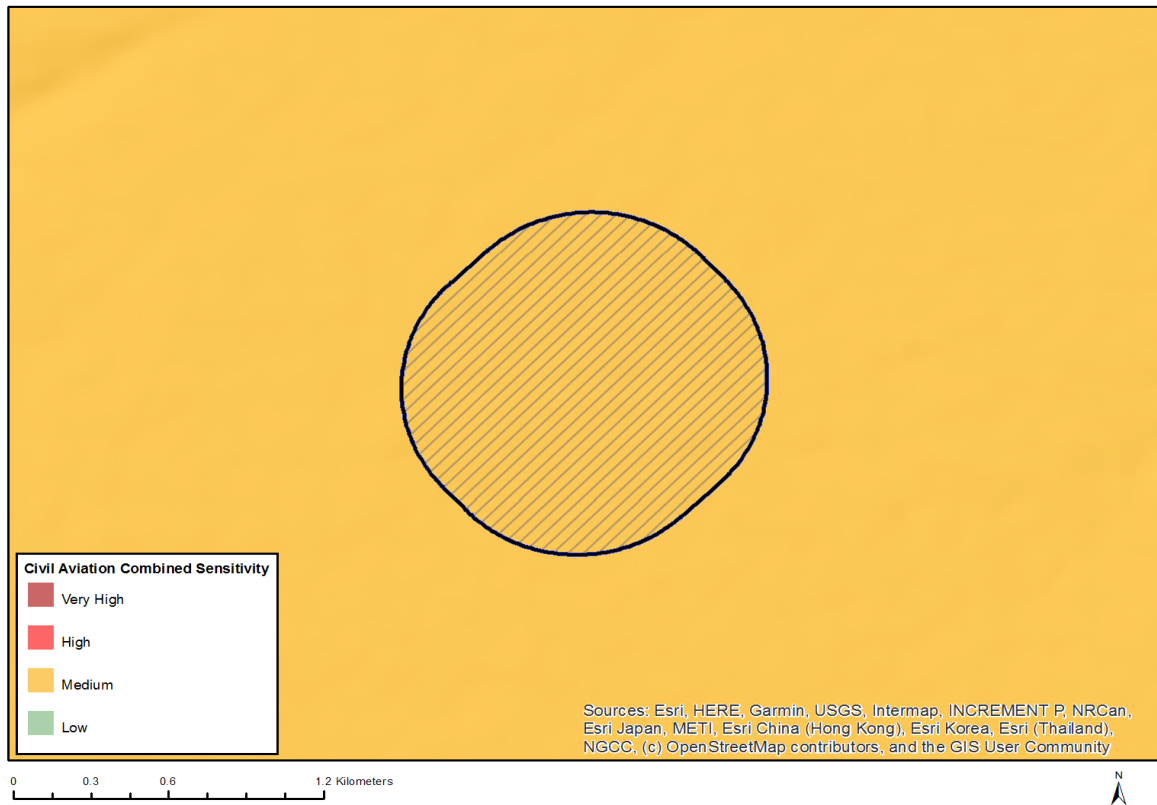


Very High sensitivity	High sensitivity	Medium sensitivity	Low sensitivity
		X	

Sensitivity Features:

Sensitivity	Feature(s)
Medium	Mountain or ridge

MAP OF RELATIVE CIVIL AVIATION THEME SENSITIVITY

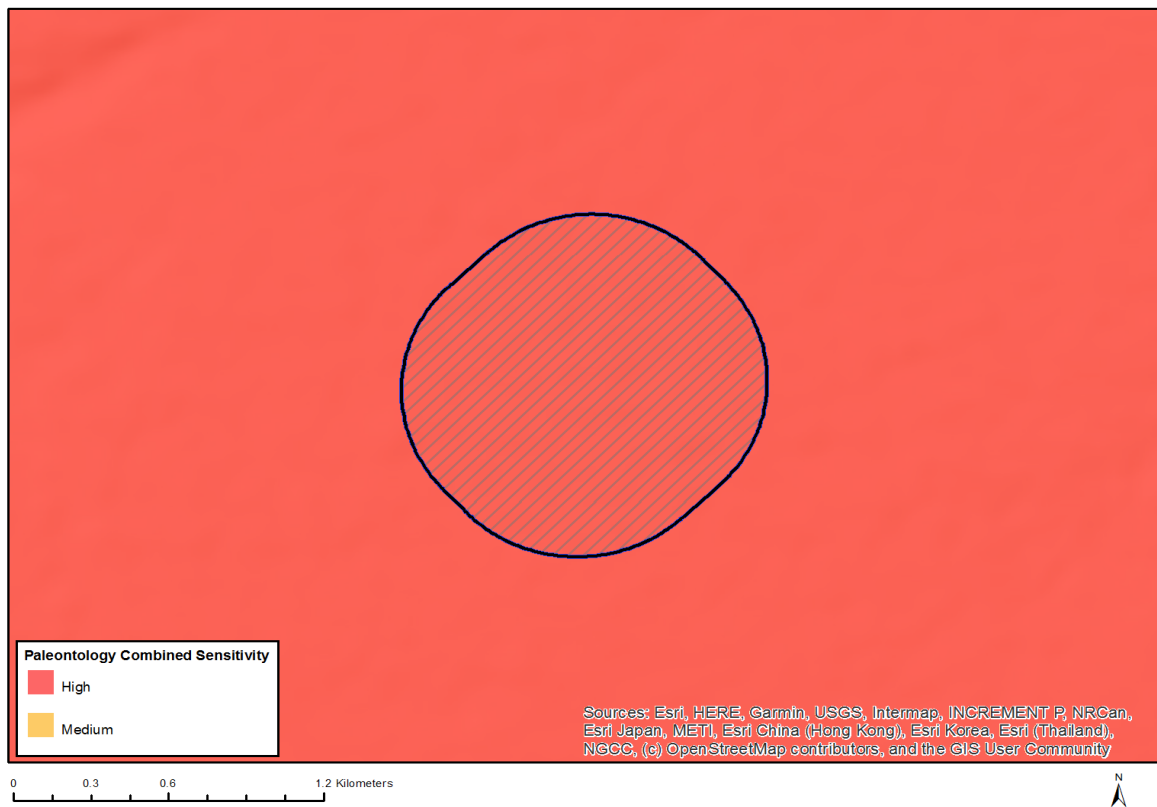


Very High sensitivity	High sensitivity	Medium sensitivity	Low sensitivity
		X	

Sensitivity Features:

Sensitivity	Feature(s)
Medium	Between 15 and 35 km from a civil aviation radar
Medium	Between 8 and 15 km of other civil aviation aerodrome

MAP OF RELATIVE PALEONTOLOGY THEME SENSITIVITY

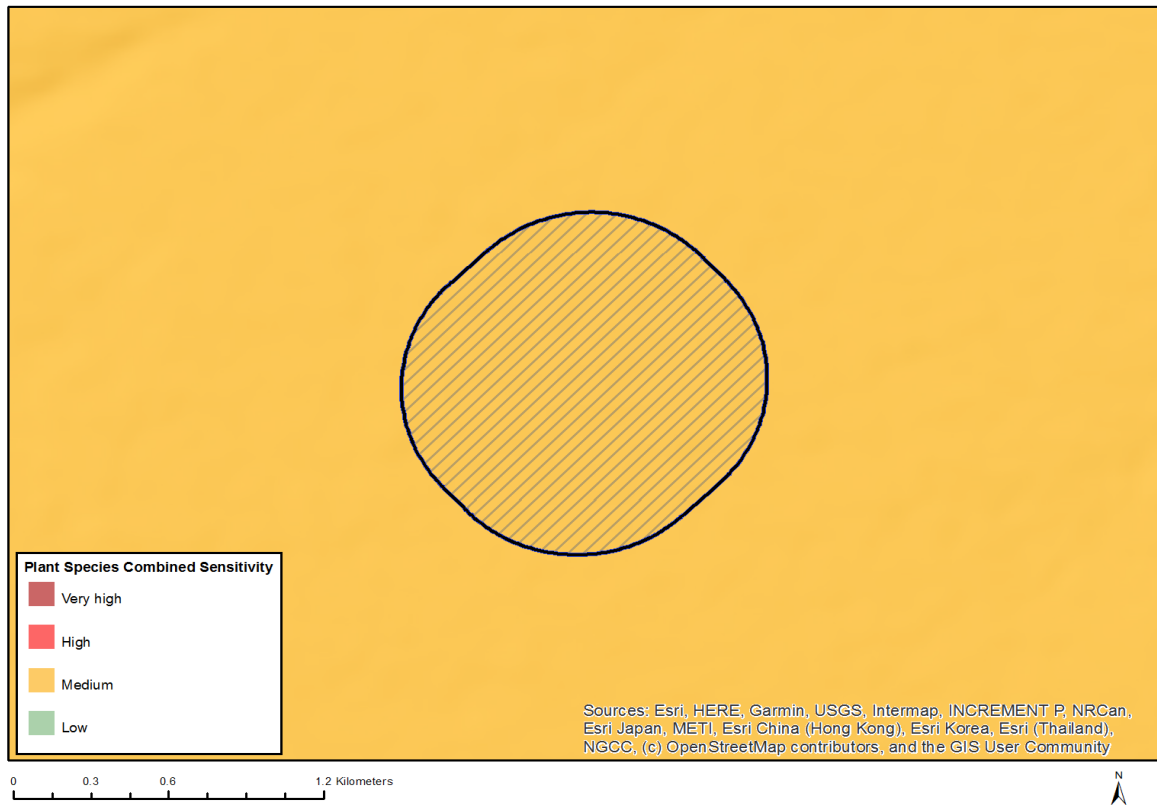


Very High sensitivity	High sensitivity	Medium sensitivity	Low sensitivity
	X		

Sensitivity Features:

Sensitivity	Feature(s)
High	Rock units with a high paleontological sensitivity

MAP OF RELATIVE PLANT SPECIES THEME SENSITIVITY



Very High sensitivity	High sensitivity	Medium sensitivity	Low sensitivity
		X	

Sensitivity Features:

Sensitivity	Feature(s)
Medium	<i>Secale strictum</i> subsp. <i>africanum</i>
Medium	<i>Helictotrichon roggeveldense</i>
Medium	<i>Helictotrichon namaquense</i>
Medium	<i>Delosperma sphaemanthoides</i>
Medium	<i>Romulea hallii</i>
Medium	<i>Romulea multifida</i>
Medium	<i>Oxalis marlothii</i>
Medium	<i>Cliffortia arborea</i>
Medium	Sensitive species 527
Medium	Sensitive species 516
Medium	<i>Asparagus mollis</i>

MAP OF RELATIVE DEFENCE THEME SENSITIVITY



Very High sensitivity	High sensitivity	Medium sensitivity	Low sensitivity
			X

Sensitivity Features:

Sensitivity	Feature(s)
Low	Low sensitivity

MAP OF RELATIVE TERRESTRIAL BIODIVERSITY THEME SENSITIVITY



Very High sensitivity	High sensitivity	Medium sensitivity	Low sensitivity
X			

Sensitivity Features:

Sensitivity	Feature(s)
Very High	Critical Biodiversity Area 1
Very High	Focus Areas for land-based protected areas expansion
Very High	Freshwater ecosystem priority area quinary catchments