

Moriri PV Facility, Richmond, Northern Cape Province

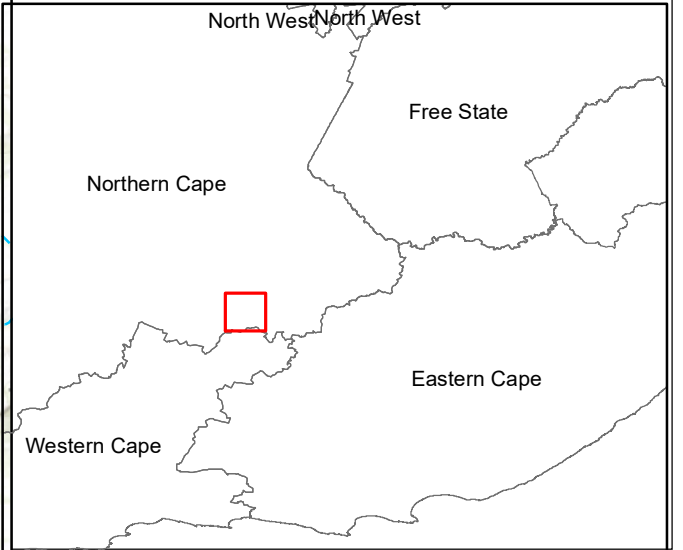
Locality Map

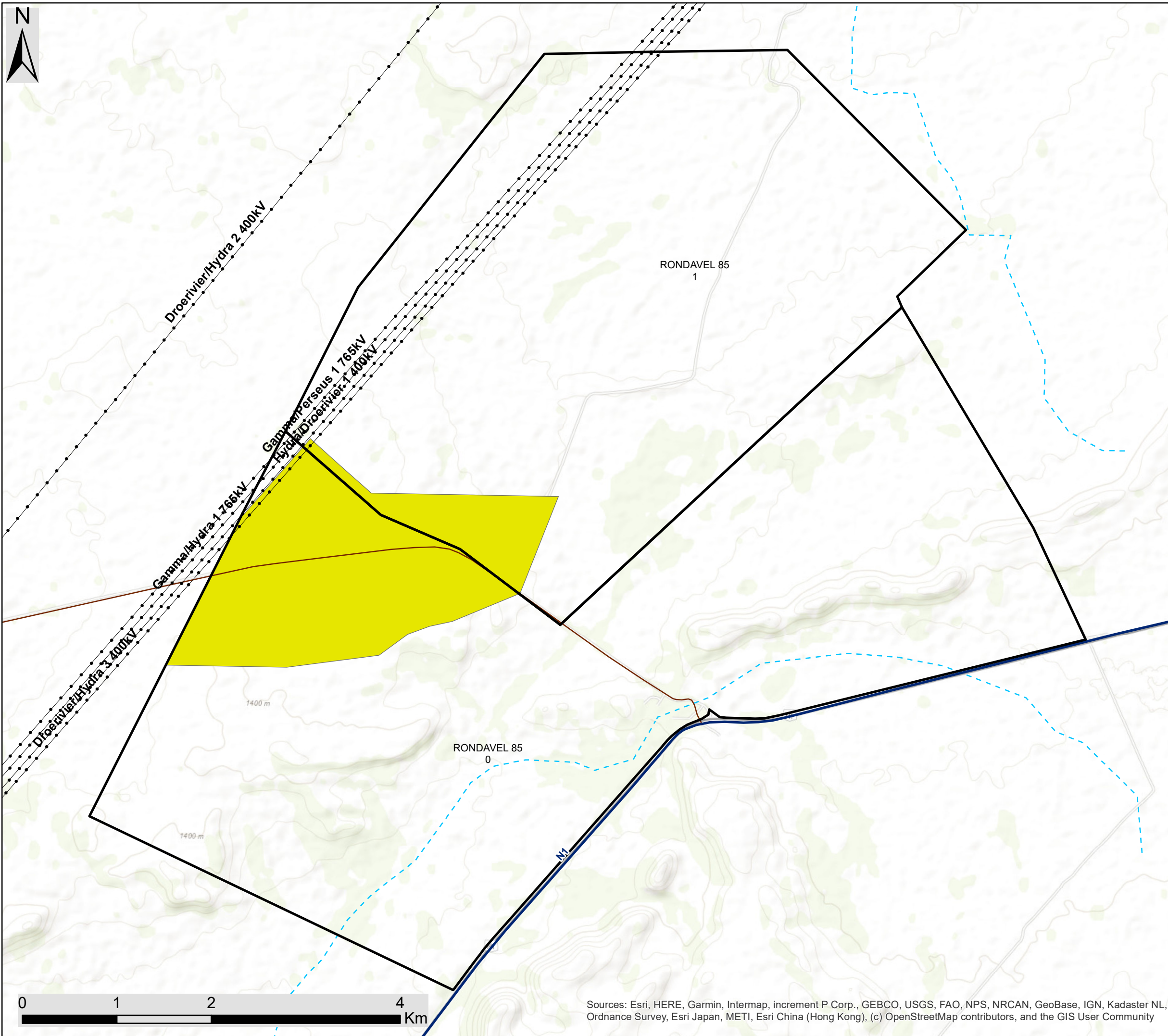
- Legend**
- Towns
 - Existing Power Line
 - Main Road
 - National Road
 - Regional Road
 - Non-Perennial River
 - Perennial River
 - Project Site
 - Moriri PV Facility Development Area



Sources: Esri, HERE, Garmin, Intermap, increment P Corp., GEBCO, USGS, FAO, NPS, NRCAN, GeoBase, IGN, Kadaster NL, Ordnance Survey, Esri Japan, METI, Esri China (Hong Kong), (c) OpenStreetMap contributors, and the GIS User Community

Scale: 1: 144 621
 Projection: WGS_1984
 Map Ref: Great Karoo REF PV2 - Locality





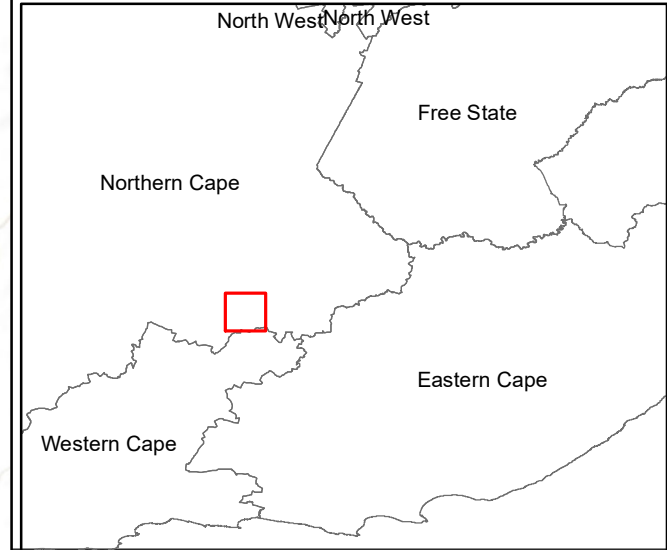
**Moriri PV Facility,
Richmond, Northern Cape Province**

Preliminary Layout Map

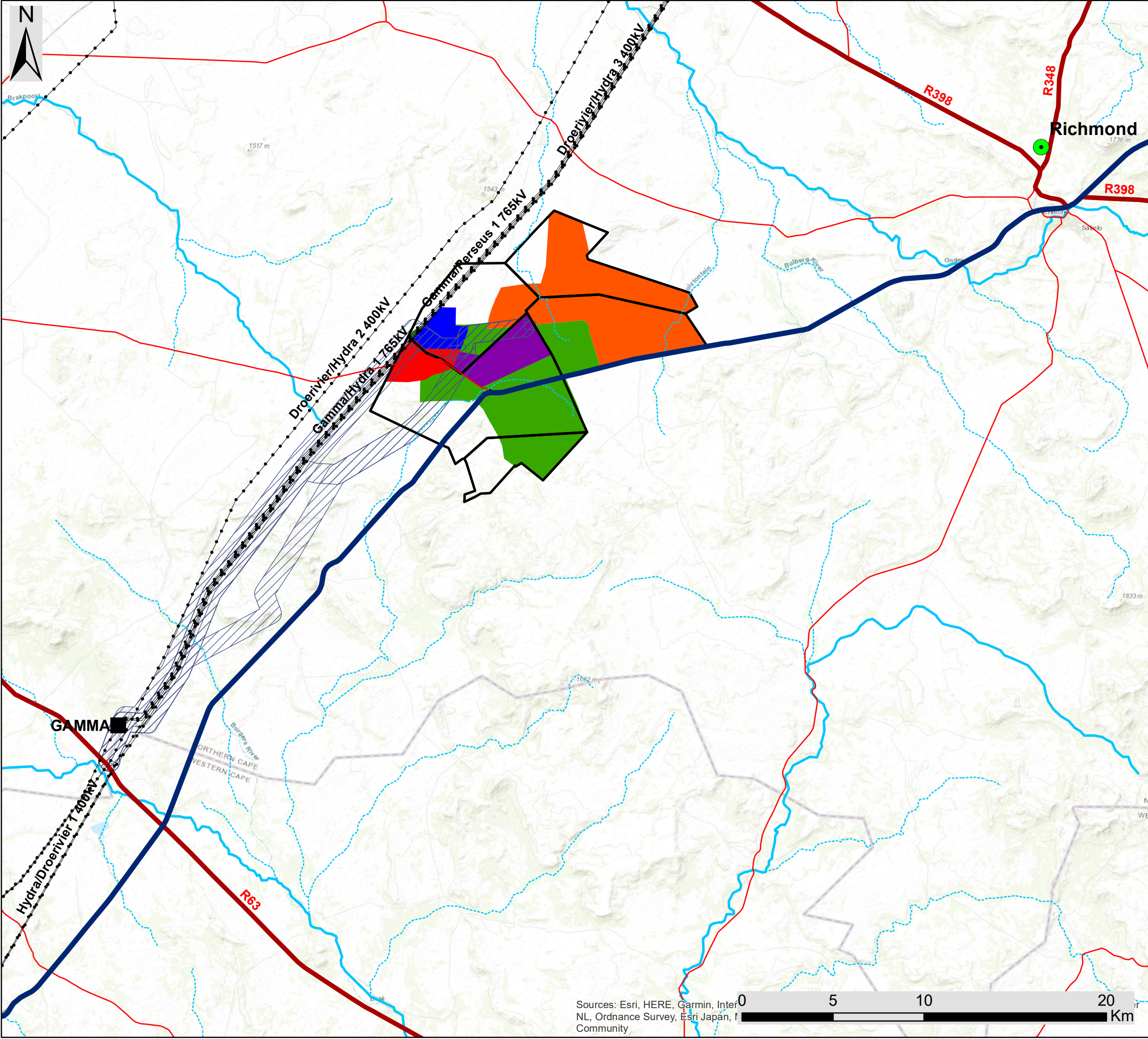
- Legend**
- Existing Power Line
 - Main Road
 - - - Non-Perennial River
 - Perennial River
 - ▭ Project Site
 - Moriri PV Facility Development Area

savannah
environmental

Scale: 1: 144 621
 Projection: WGS_1984
 Map Ref: Great Karoo REF PV2 - Layout








Sources: Esri, HERE, Garmin, Intermap, increment P Corp., GEBCO, USGS, FAO, NPS, NRCAN, GeoBase, IGN, Kadaster NL, Ordnance Survey, Esri Japan, METI, Esri China (Hong Kong), (c) OpenStreetMap contributors, and the GIS User Community



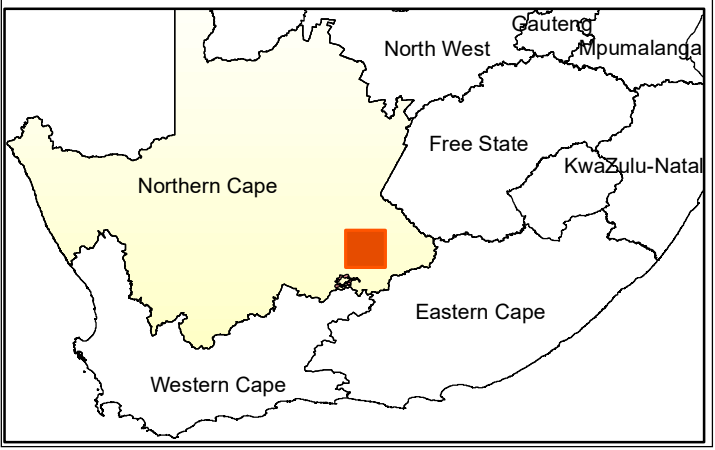
Proposed Greater Karoo Renewable Energy Cluster, Richmond, Northern Cape Province

Locality Map

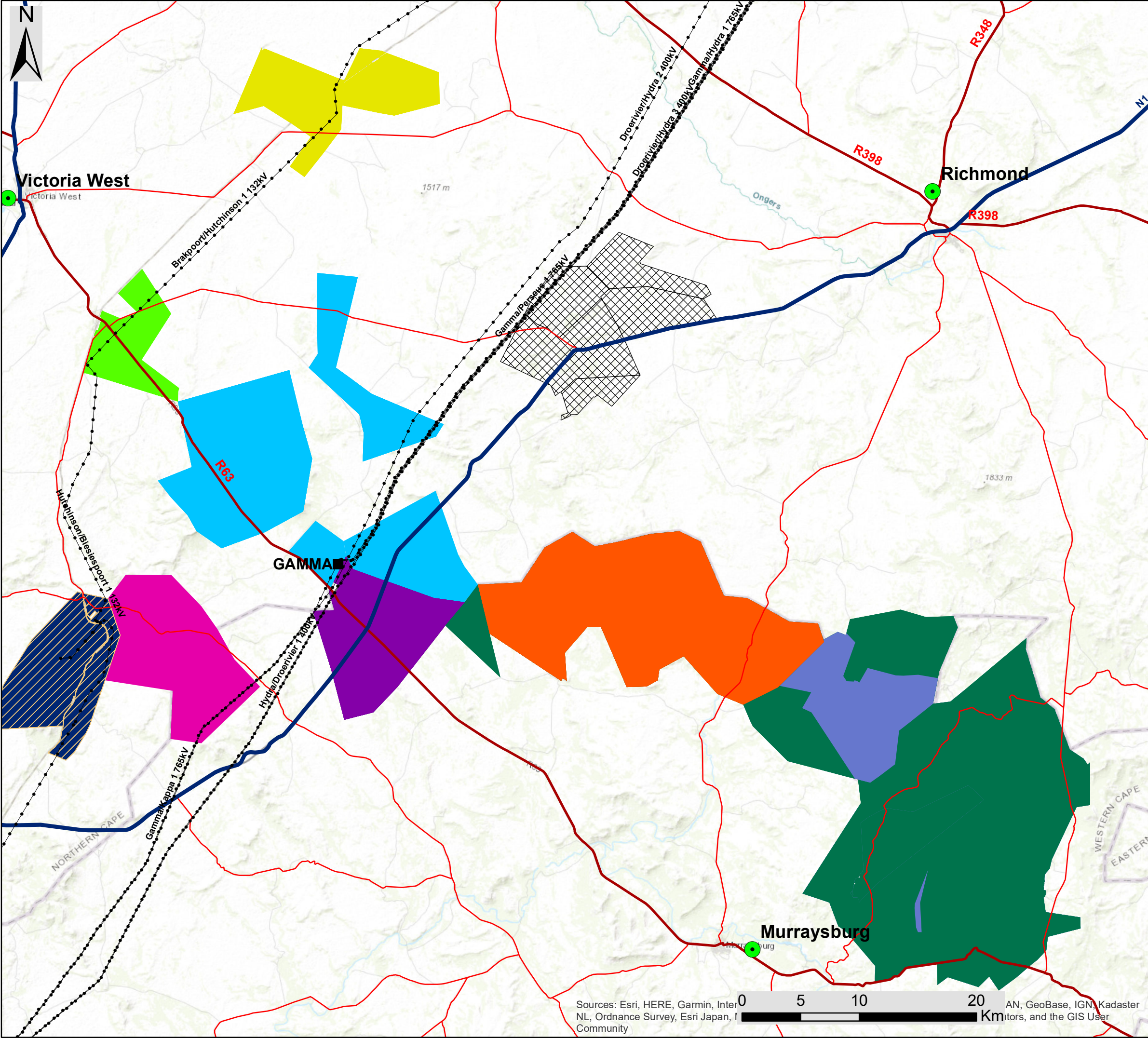
Legend

-  Town
-  Eskom Substation
-  Existing Power Line
-  National Road
-  Regional Road
-  Main Road
-  Non-Perennial River
-  Perennial River
-  Grid Connection Corridor Alternatives (1km wide)
-  Nku Solar PV
-  Moriri Solar PV
-  Kwana Solar PV
-  Angora Wind Energy Facility
-  Merino Wind Energy Facility
-  Project Sites

Scale: 1: 250 000
 Projection: WGS_1984
 Map Ref: Great Karoo BID - Locality



Sources: Esri, HERE, Garmin, InterNL, Ordnance Survey, Esri Japan, Community
 0 5 10 20 Km



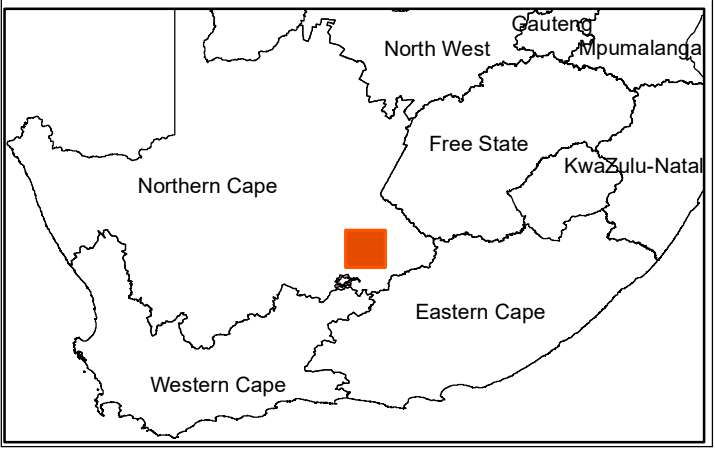
Proposed Greater Karoo Renewable Energy Cluster, Richmond, Northern Cape Province

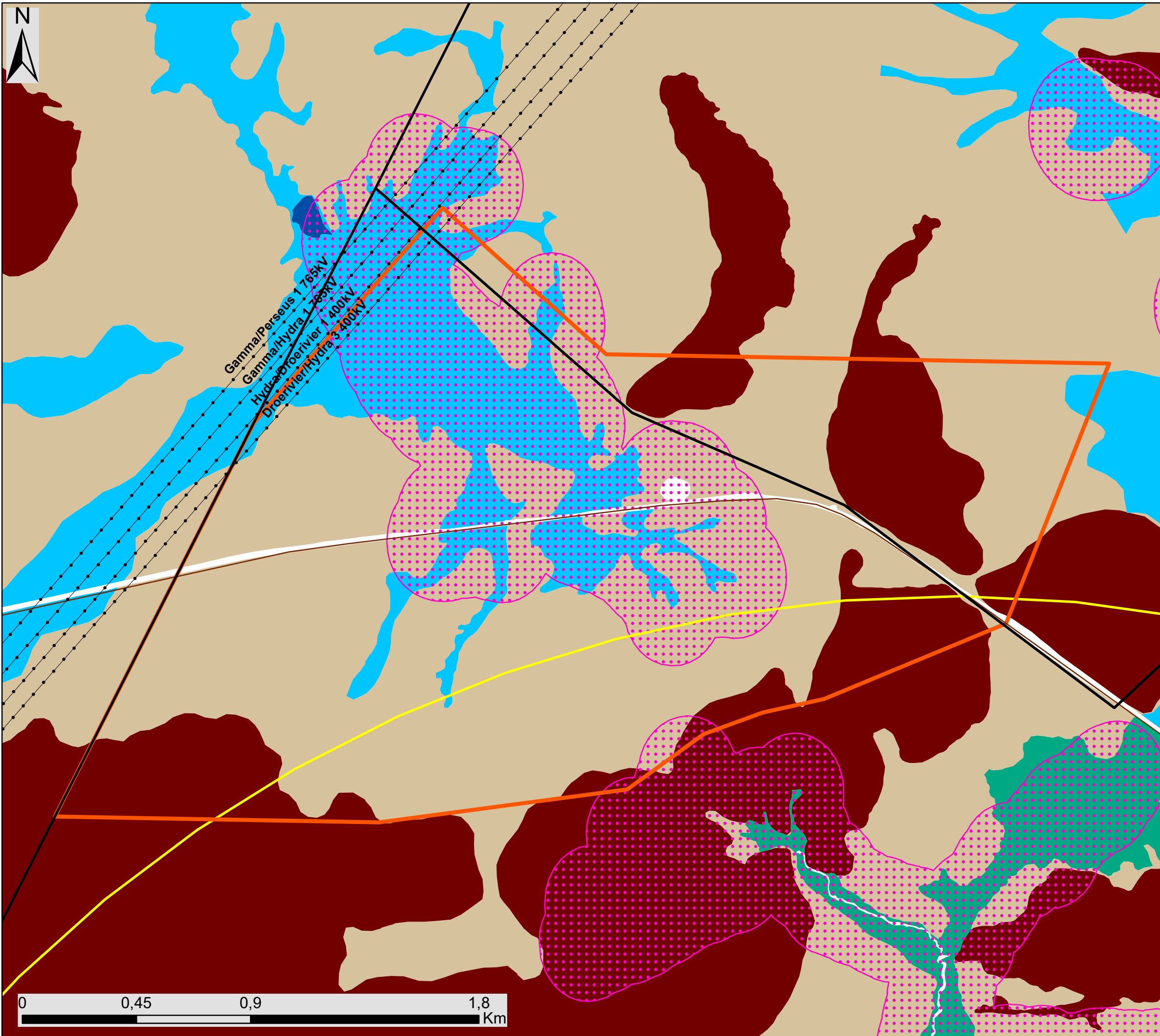
Cumulative Map

Legend

- Town
 - Eskom Substation
 - Existing Power Line
 - National Road
 - Regional Road
 - Main Road
 - Great Karoo Renewable Energy Cluster
- ### Known Authorised Renewable Energy Facilities (based on affected property)
- Nobelsfield Wind Energy Facility
 - Bietjiesfontein Solar Energy Facility
 - Karoo Renewable Energy Facility
 - Brakpoort Solar PV Facility
 - Umsinde Emoyeni Wind Energy Facility
 - Aurora Solar PV Facility
 - Mainstream Renewable Energy Cluster
 - Ishwati Emoyeni Wind Energy Facility
 - Trouberg Wind Energy Facility
 - Modderfontein Wind Energy Facility

Scale: 1: 250 000
 Projection: WGS_1984
 Map Ref: Great Karoo Cumulative





Moriri PV Facility, Richmond, Northern Cape Province

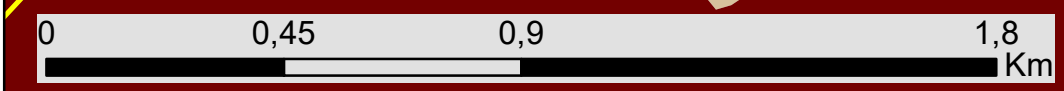
Preliminary Sensitivity Map

Legend

- Existing Power Line
- Main Road
- Non-Perennial River
- Perennial River
- Project Site
- Moriri PV Facility Development Area

Environmental Features & Sensitivity

- Verreaux Eagle - Medium Sensitivity Buffer (5.2km)
- Bats - High Sensitivity Buffer (200m)
- Drainage - Very High Ecological Sensitivity
- Drainage - High Ecological Sensitivity
- Open water - High Ecological Sensitivity
- Mountain slopes - Medium-High Ecological Sensitivity
- Karroid plains - Medium Ecological Sensitivity



Scale: 1: 144 621
 Projection: WGS_1984
 Map Ref: Great Karoo REF PV2 - Prelim Sens

