

Lethabo Solar Energy Facility

Environmental sensitivity and layout map



Legend

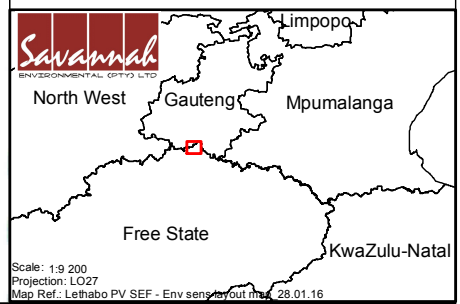
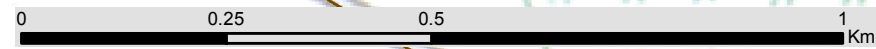
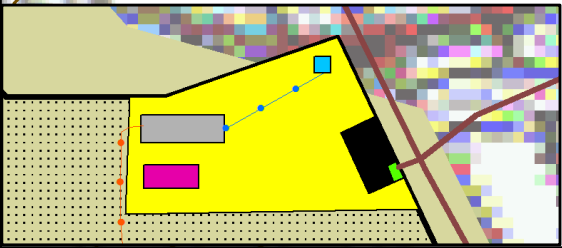
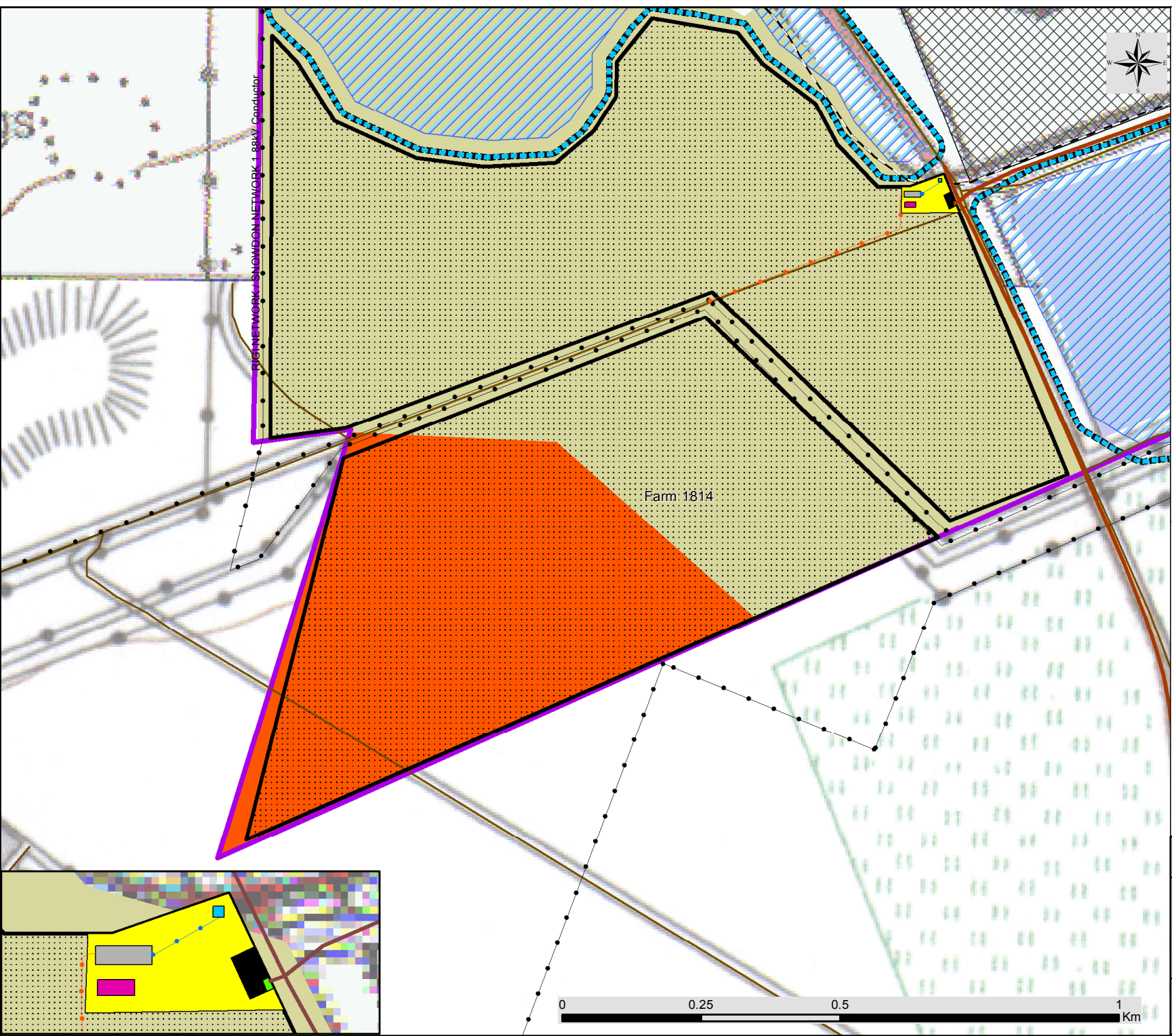
- Eskom Substation
- Existing Powerline
- Railway Line
- Other access roads
- Affected farm portion
- Lethabo Power Station

Layout Plan:

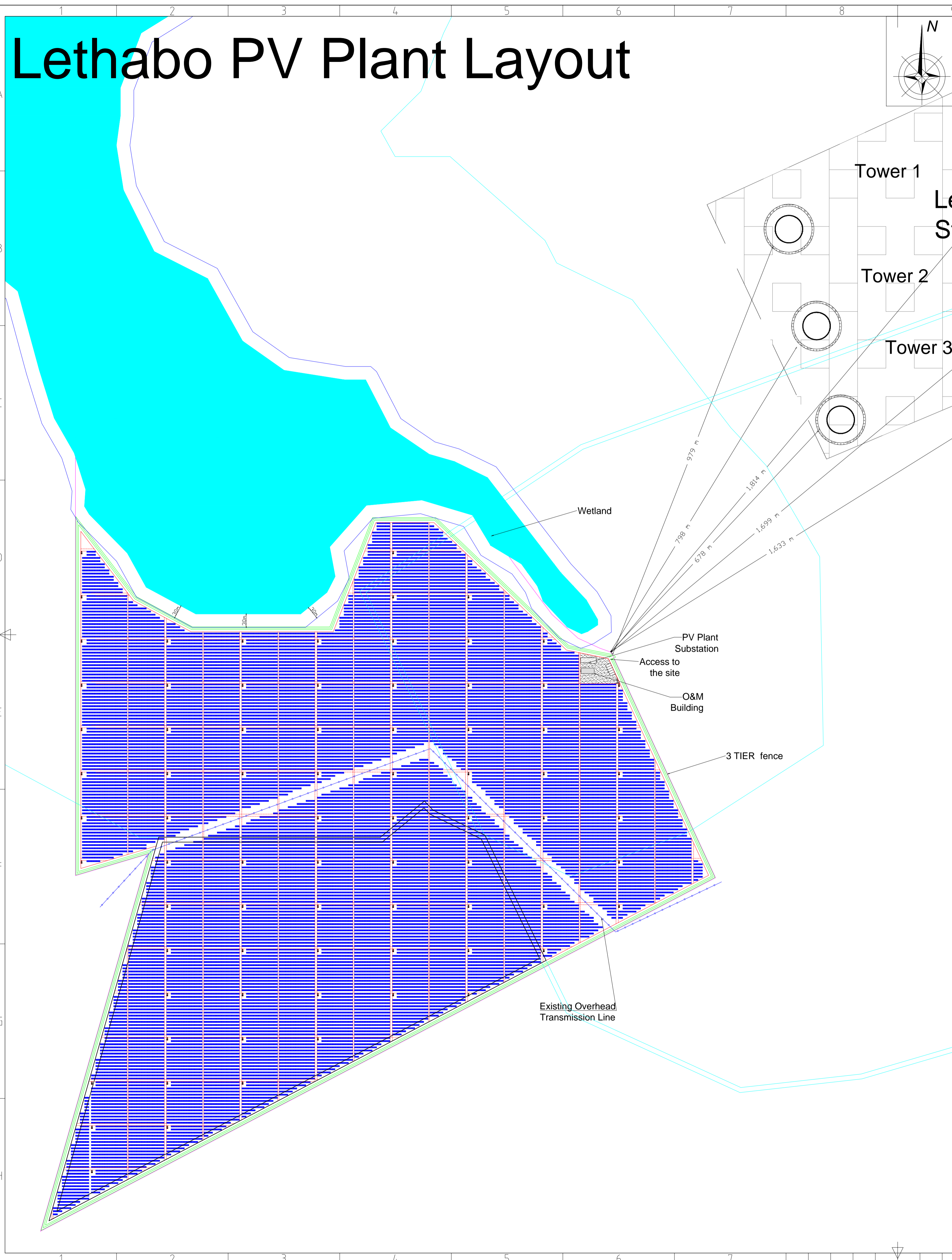
- Site Access Route
- 11/132kV Power Line
- 132kV Power Line
- Laydown Construction Area
- O&M Building
- Parking area
- Proposed Access to the Site
- Proposed Connection Point
- Facility Substation
- PV Site

Environmental Sensitivities:

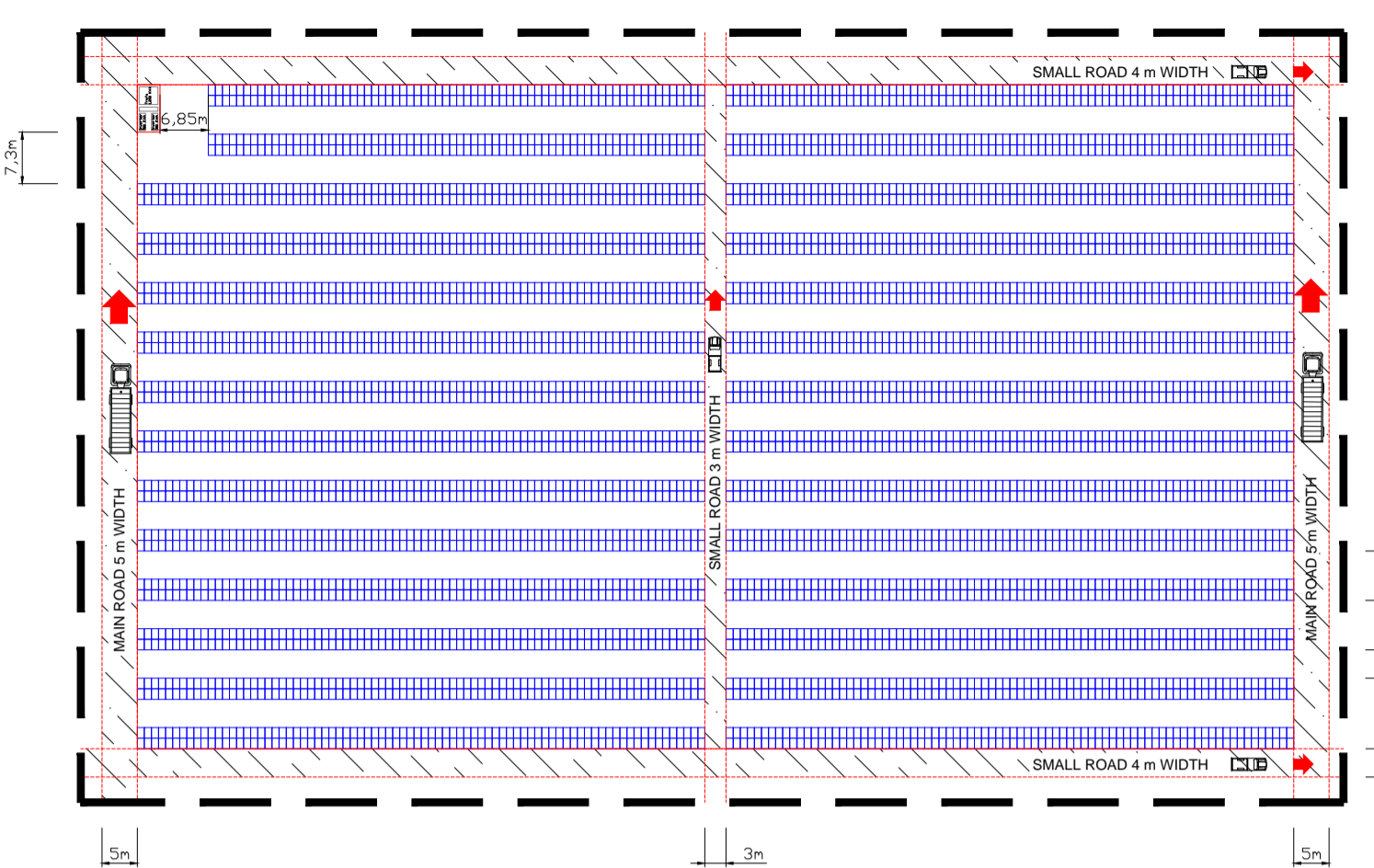
- Wetlands (No-go area)
- Wetland buffer (30m_No-go area)
- NFEPA wetlands/waterbody
- Conyza podocephala Grassland (Medium Ecological Sensitivity)
- Conyza podocephala Grassland (Low Ecological Sensitivity)
- Digitaria eriantha Transformed Grassland (Low Ecological Sensitivity)



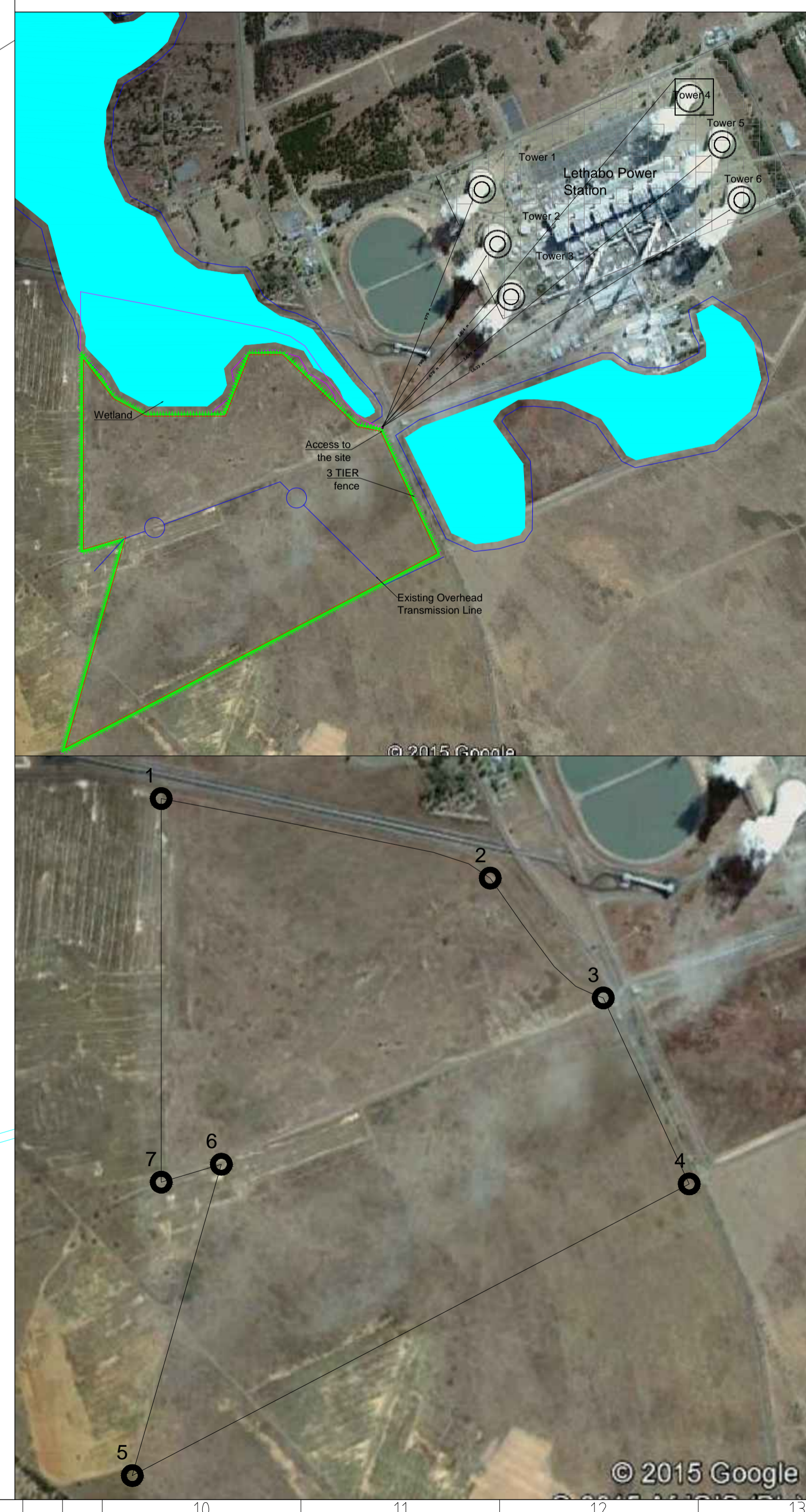
Lethabo PV Plant Layout



DETAIL- A



N.of modules per MVA: 4,400
Power Peak: 1,100 kWp



LEGEND

- PV ROW
- MV CABIN
- 3TIER FENCE
- EXISTING SUBSTATION
- SITE BOUNDARY
- OVERHEAD LINE
- WETLAND BUFFER
- INTERNAL/RING ROADS 3-5 M WIDTH
- ACCESS ROAD TO POWER STATION
- PV PLANT SUBSTATION (10 x 32 m)
- O&M BUILDING (35 x 13 m)
- PARKING AREA
- LAYDOWN CONSTRUCTION AREA
- WETLAND
- COOLING TOWERS 1-3

Lethabo PV Plant information

Total available area	162 ha
Foot print area	133 ha
Indicative capacity	73 MW

Site Corners Coordinates (UTM)

Cn. Nr.	Latitude	Longitude
1	-26.743908°	27.954480°
2	-26.745927°	27.963658°
3	-26.748938°	27.966951°
4	26.753774°	27.969474°
5	-26.759884°	27.954130°
6	-26.753094°	27.956176°
7	-26.753530°	27.954542°

REVISIONS	NAME	DATE	NOTE
01			
02			

ESKOM HOLDING LIMITED
GROUP TECHNOLOGY
ESKOM ENTERPRISES PARK

NAME	DATE
PREPARED: Ciro Rapicano	26/08/2015
DRAWN: Ciro Rapicano	04/10/2015
CHECKED: Sujit Thakuri	07/10/2015
ACCEPTED:	
SHEET SIZE: DIN A1	
SUPERSEDED BY DRWG. NO.:	

Lethabo PV Plant Indicative Layout

CAD-FILE	SCALE
----------	-------

Protection mark DIN 34 - 1 - E:
Copying of this drawing, and giving it to others and the use or communication of the contents thereof, are forbidden without express authority. Offenders are liable to the payment of damages. All rights are reserved in the event of the grant of a patent or the registration of a utility model or design.