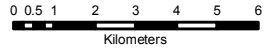


# UPINGTON SOLAR PARK Locality Map



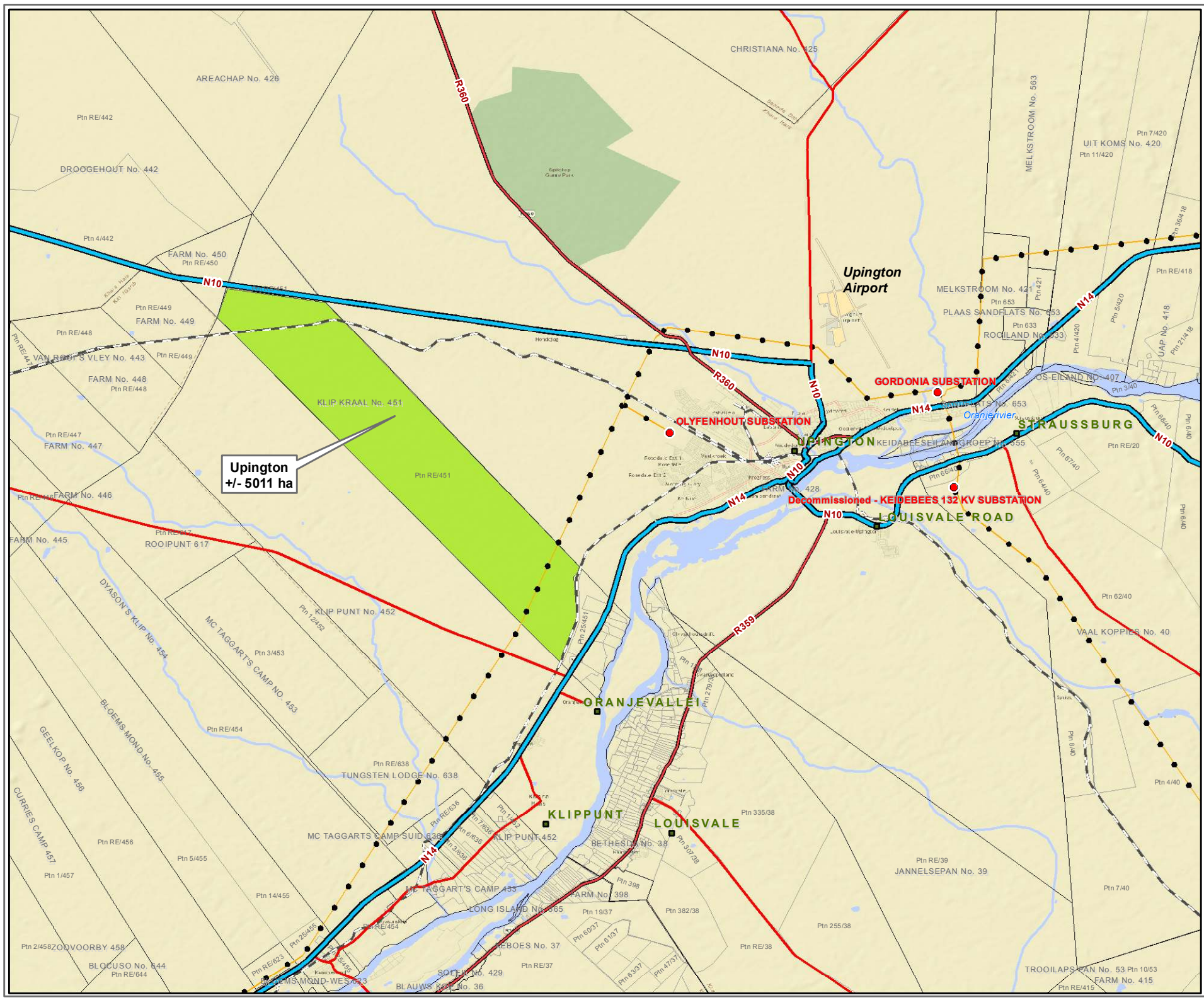
- Substations
- Towns
- Other Roads
- Major Roads
- National Roads
- Railway
- Eskom Hv Lines
- Farm Boundaries
- Farm Portions
- Area of Interest
- ~ NFEPA Wetlands
- NFEPA Rivers

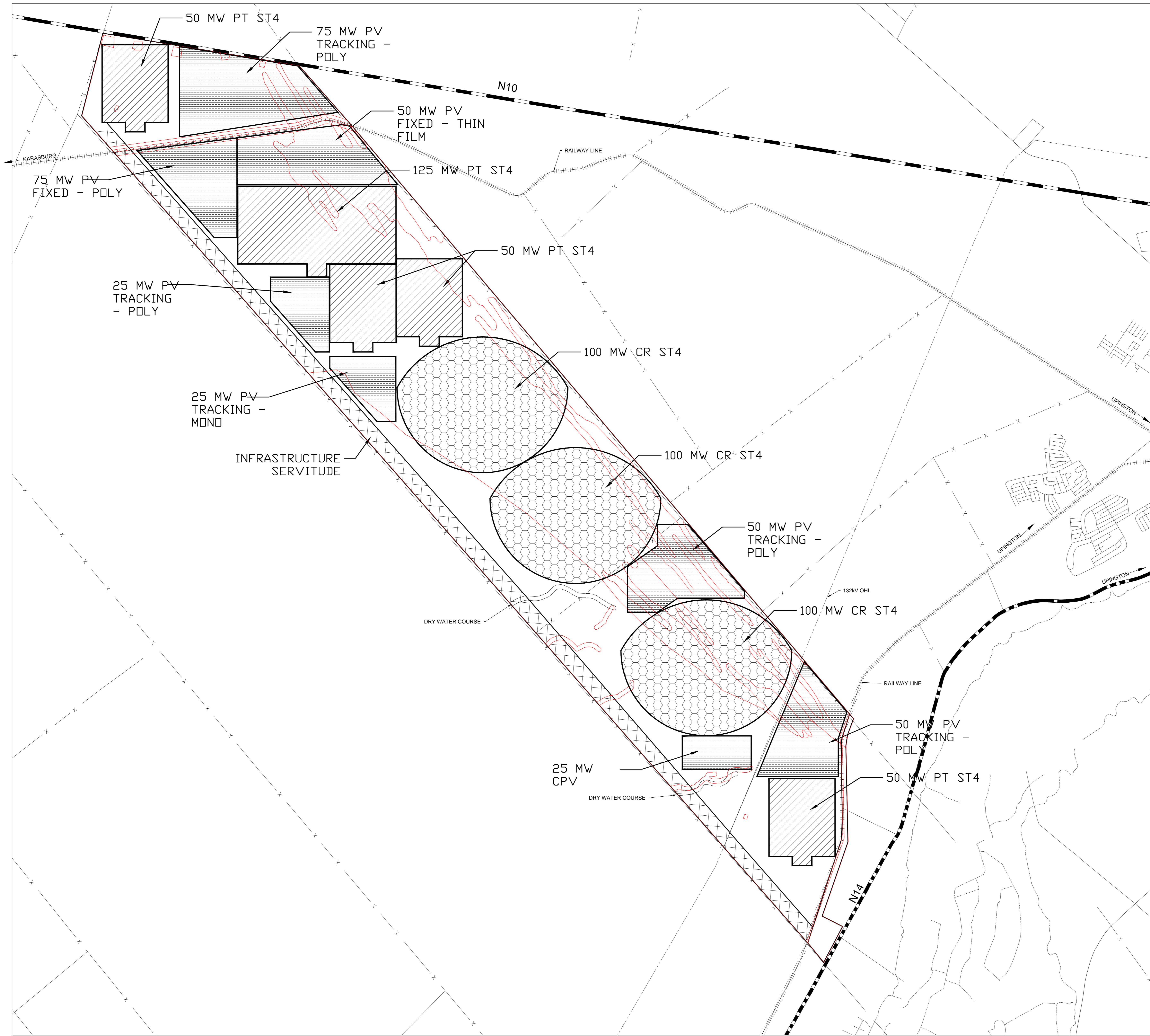
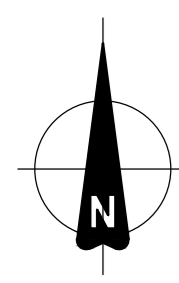


**Lidwala Consulting Engineers**

MAP PREPARED BY: Katie Sassenberg  
DATE MAP PRODUCED: 2014-01-22

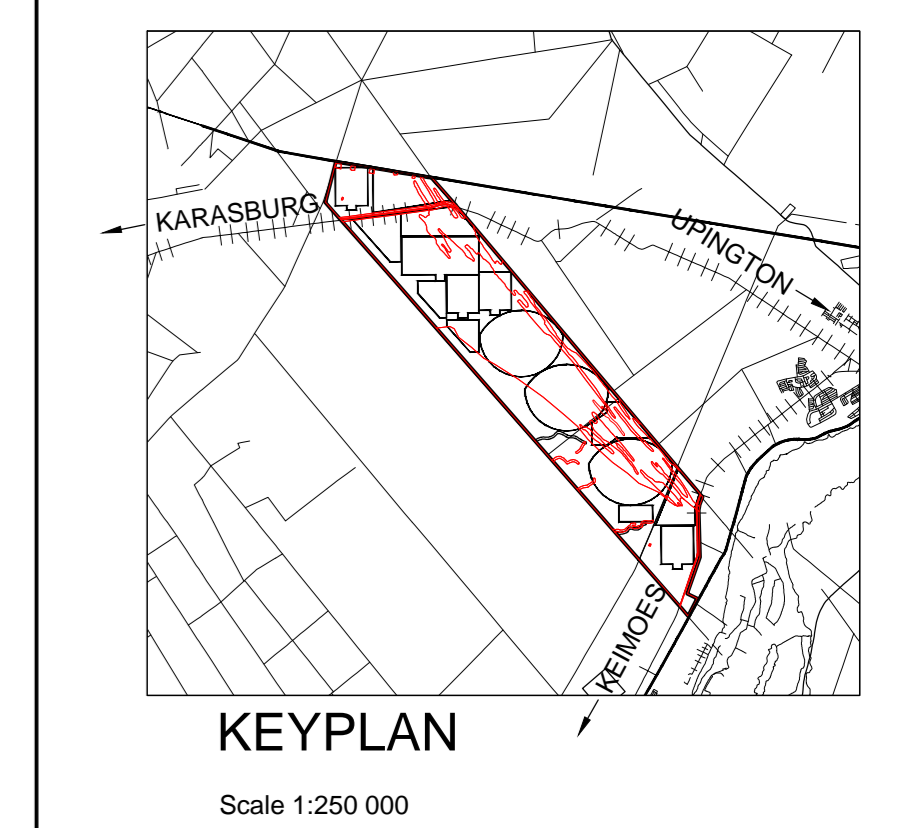
TML023\_WGS84  
Projection: Transverse\_Mercator  
Central Meridian: 23.000000  
Datum: D\_WGS\_1984





LAYOUT PLAN  
Scale 1:25 000

Reference Drawings	
Dwg No	Description



**LEGEND**

	PARABOLIC TROUGH (PT)
	PHOTOVOLTAIC (PV)
	CENTRAL RECEIVER (CR)
	ARTERIAL ROUTE
	OHL
	FENCE
	RAILWAY LINE
	SITE BOUNDARY
	WATER COURSE

Rev	Date	Description	By	Chd	App
A		FIRST ISSUE			V.P.

Designed	Drawn	Checked	Approved	Date	Scale
Designed By	V.P.	Checked By	Approved By	Date	1:25 000

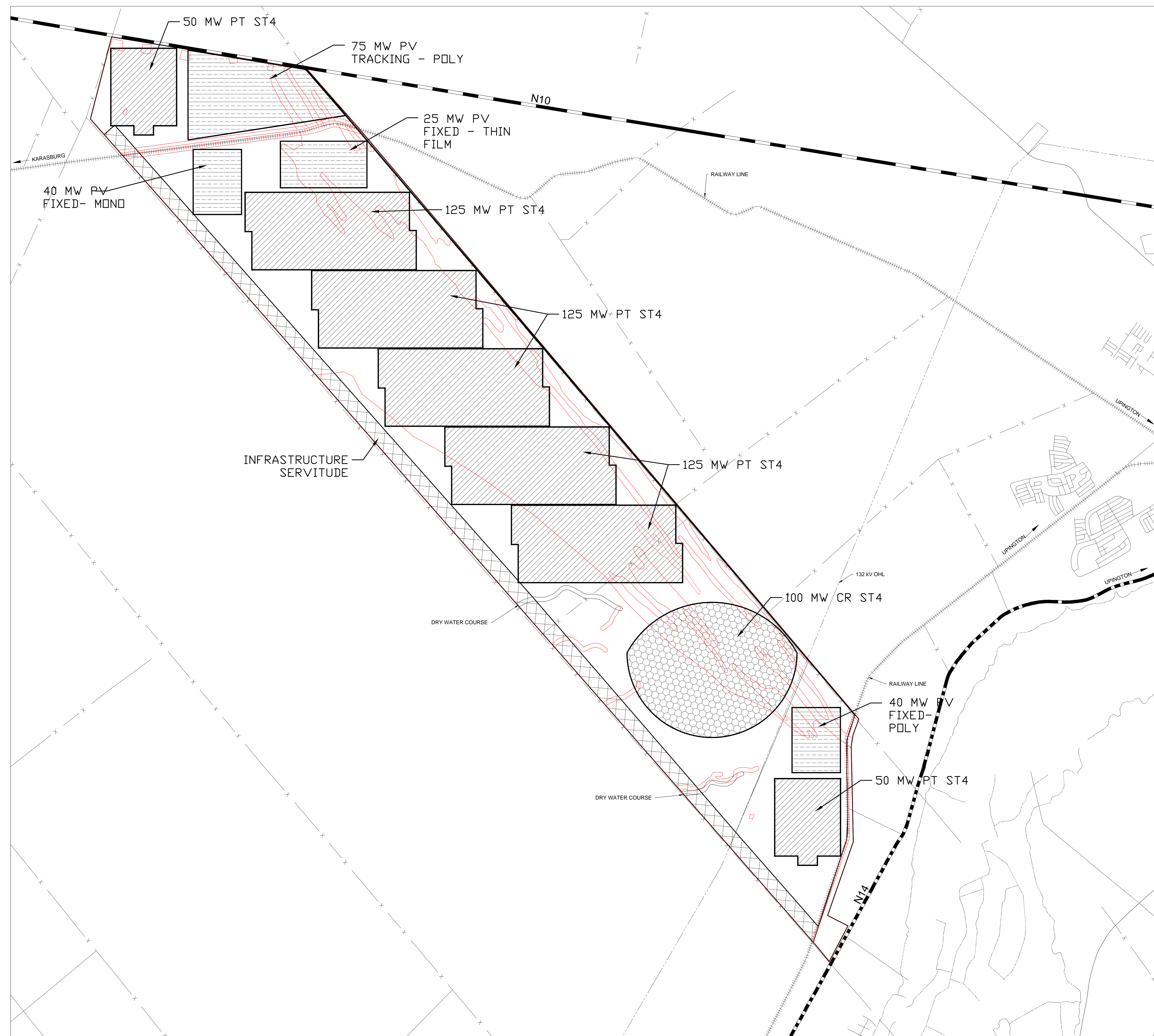
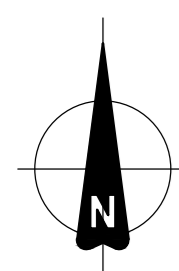
Client  
**CEF (SOC) Ltd**

Project  
**CEF UPINGTON  
SOLAR PARK FEASIBILITY STUDY**

Drawing Title  
**TECHNOLOGY MIX OPTION 1  
CONCEPTUAL LAYOUT**

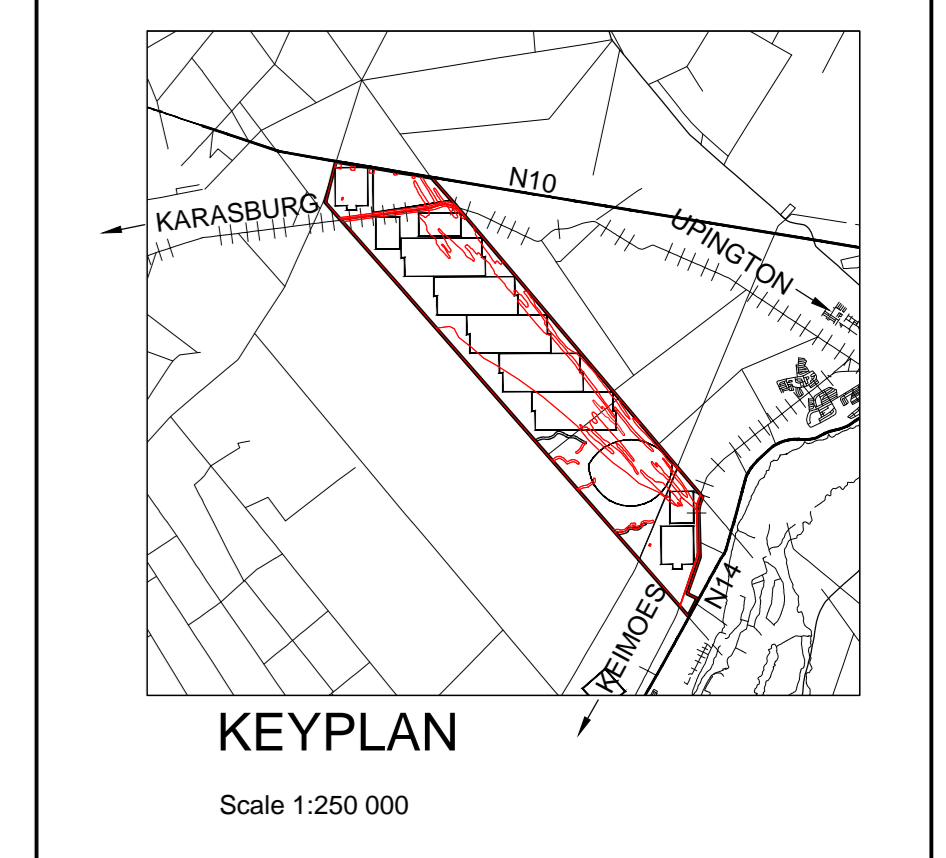


Job No.	Area	Discipline	Dwg No.	Sheet No.	Revision	Size
233426 - 00 - E - 6000 - 01					B	A0



LAYOUT PLAN  
Scale 1:25 000

Reference Drawings	
Dwg No	Description



**LEGEND**

	PARABOLIC TROUGH (PT)
	PHOTOVOLTAIC (PV)
	CENTRAL REFLECTOR (CR)
	ARTERIAL ROUTE
	OHL
	FENCE
	RAILWAY LINE
	SITE BOUNDARY
	WATER COURSE

Rev	Date	Description	By	Chd	App

Designed	Drawn	Checked	Approved	Date	Scale

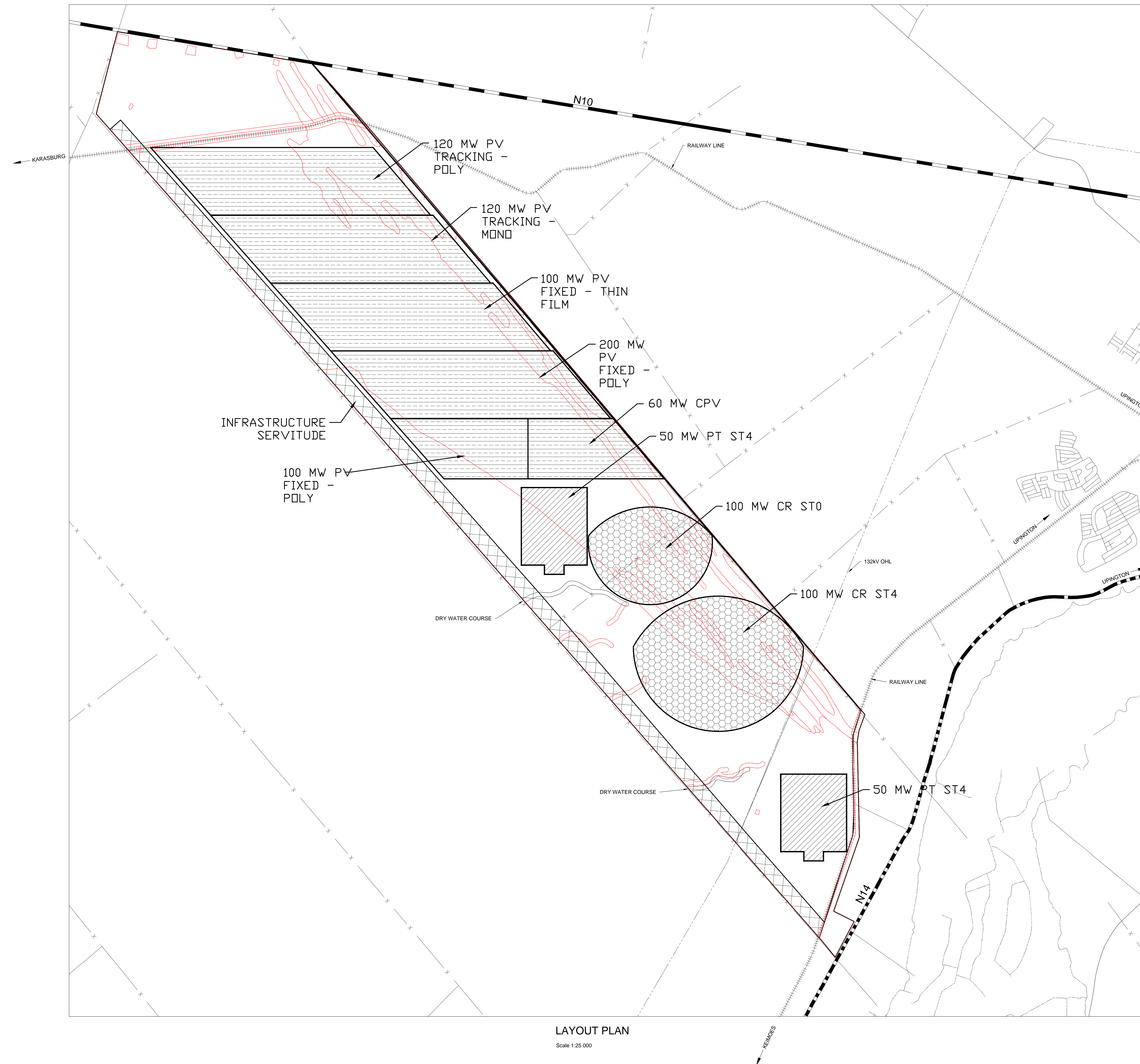
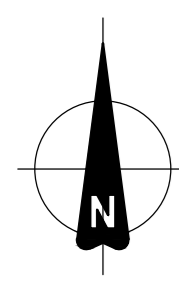
Client  
**CEF (SOC) Ltd**

Project  
**CEF UPINGTON  
SOLAR PARK FEASIBILITY STUDY**

Drawing Title  
**TECHNOLOGY MIX OPTION 2  
CONCEPTUAL LAYOUT**

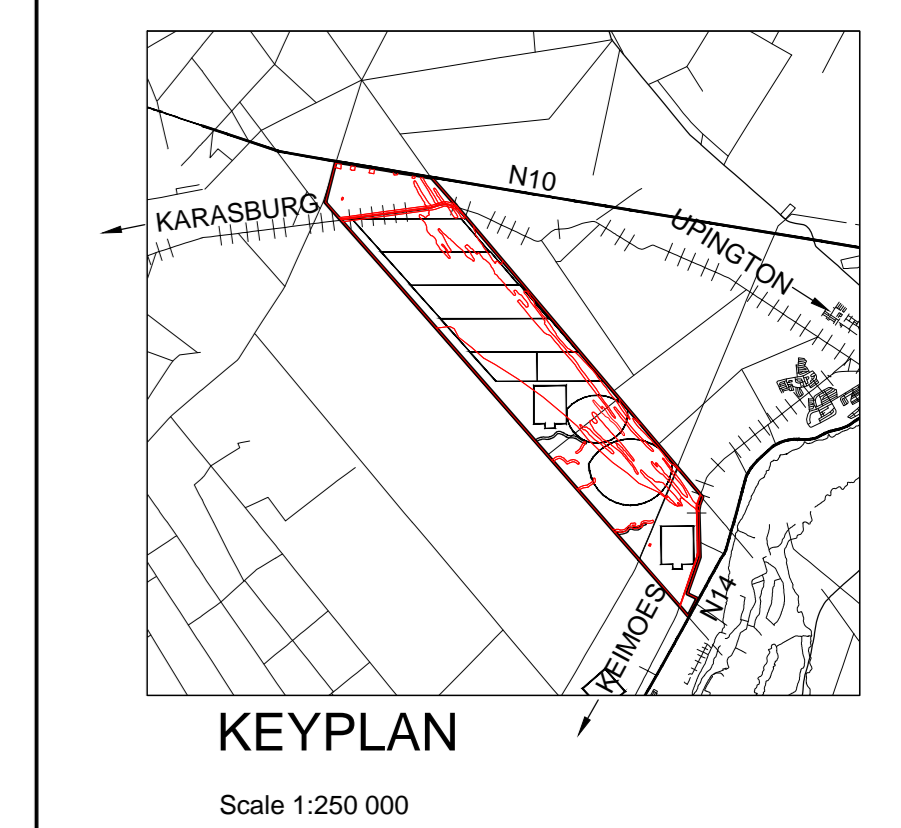


Job No.	Area	Discipline	Dwg No.	Sheet No.	Revision	Size
233426 - 00 - E - 6000 - 02					B	A0



LAYOUT PLAN  
Scale 1:25 000

Reference Drawings	
Dwg No	Description



**LEGEND**

	PARABOLIC TROUGH (PT)
	PHOTOVOLTAIC (PV)
	CENTRAL REFLECTOR (CR)
	ARTERIAL ROUTE
	OHL
	FENCE
	RAILWAY LINE
	SITE BOUNDARY
	WATER COURSE

Rev	Date	Description	By	Chd	App
A		FIRST ISSUE			

Designed By	Drawn	Checked	Approved	Date	Scale
V.P.					1:25 000

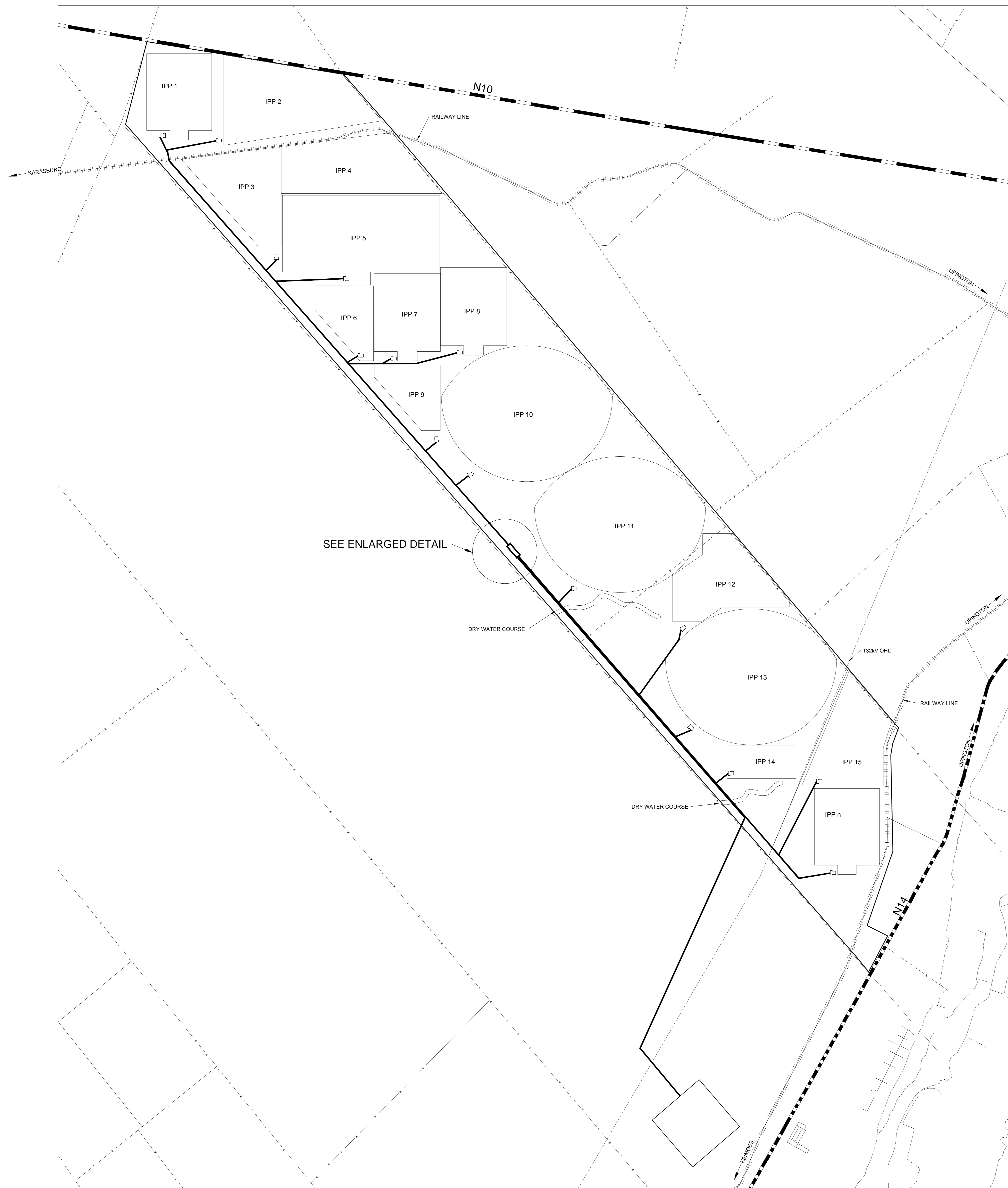
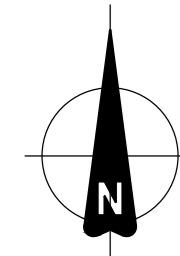
Client  
**CEF (SOC) Ltd**

Project  
**CEF UPINGTON  
SOLAR PARK FEASIBILITY STUDY**

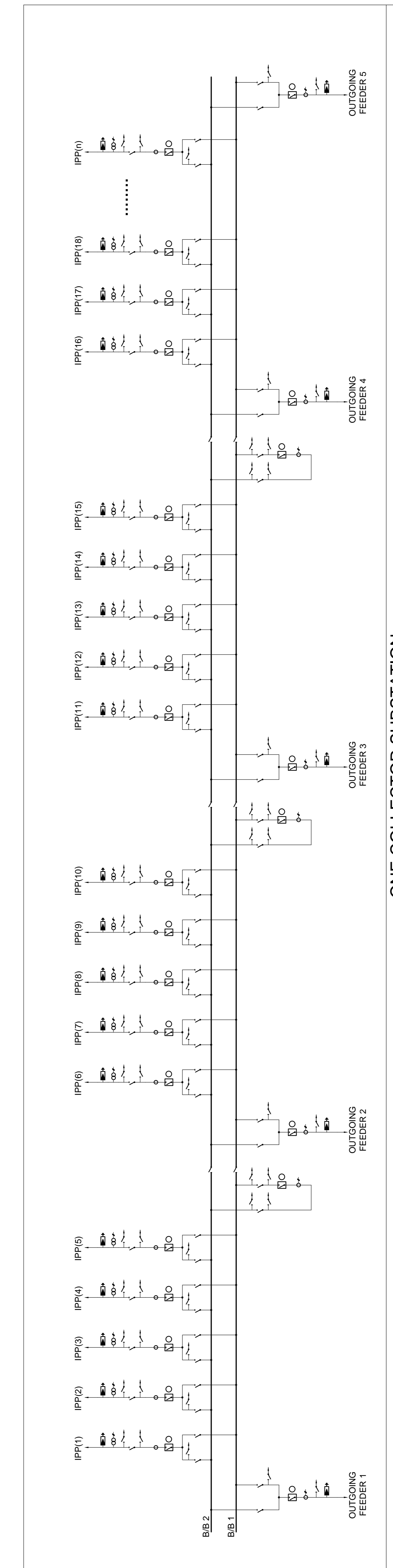
Drawing Title  
**TECHNOLOGY MIX OPTION 3  
CONCEPTUAL LAYOUT**



Job No.	Area	Discipline	Dwg No.	Sheet No.	Revision	Size
233426 - 00 - E - 6000 - 03					B	A0

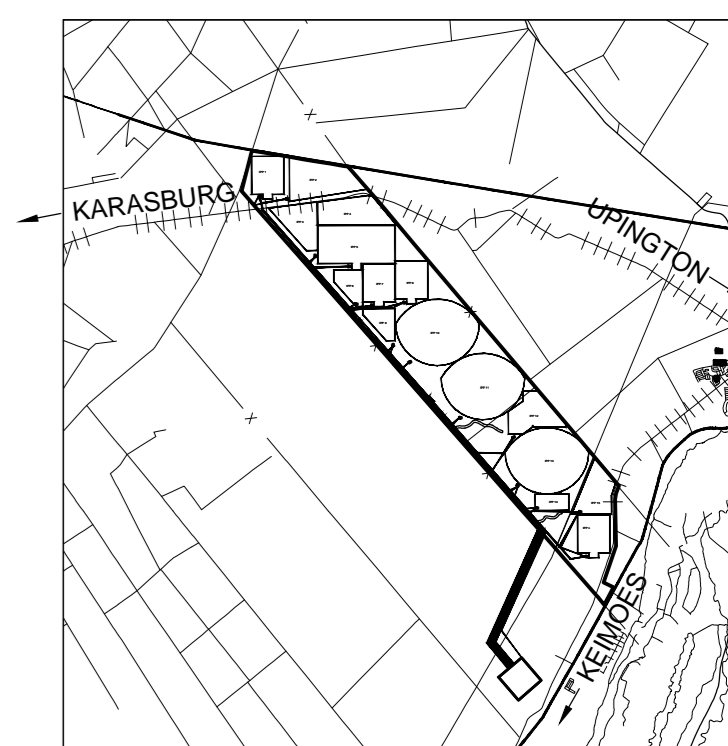


LAYOUT PLAN  
Scale 1:25 000



ONE COLLECTOR SUBSTATION

Reference Drawings	
Dwg No	Description



KEYPLAN  
Scale 1:250 000

NOTES:  
1. TECHNOLOGY OPTION 1 SHOWN FOR ILLUSTRATIVE PURPOSES. CONCEPTUAL APPROACH RELEVANT TO ALL MIX OPTIONS

LEGEND

- N14 ARTERIAL ROUTE
- OHL
- FENCE
- RAILWAY LINE
- SITE BOUNDARY
- WATER COURSE

Rev	Date	Description	By	Chd	App
A		FIRST ISSUE		V.P.	Chk1 App1

Designed By	Drawn	Checked	Approved	Date	Scale
	V.P.				1:25 000

Client  
**CEF (SOC) Ltd**

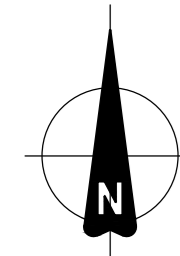
Project  
**CEF UPINGTON  
SOLAR PARK FEASIBILITY STUDY**

Drawing Title  
**ELECTRICAL RETICULATION  
STRATEGY - OPTION A  
ONE COLLECTOR SUBSTATION**

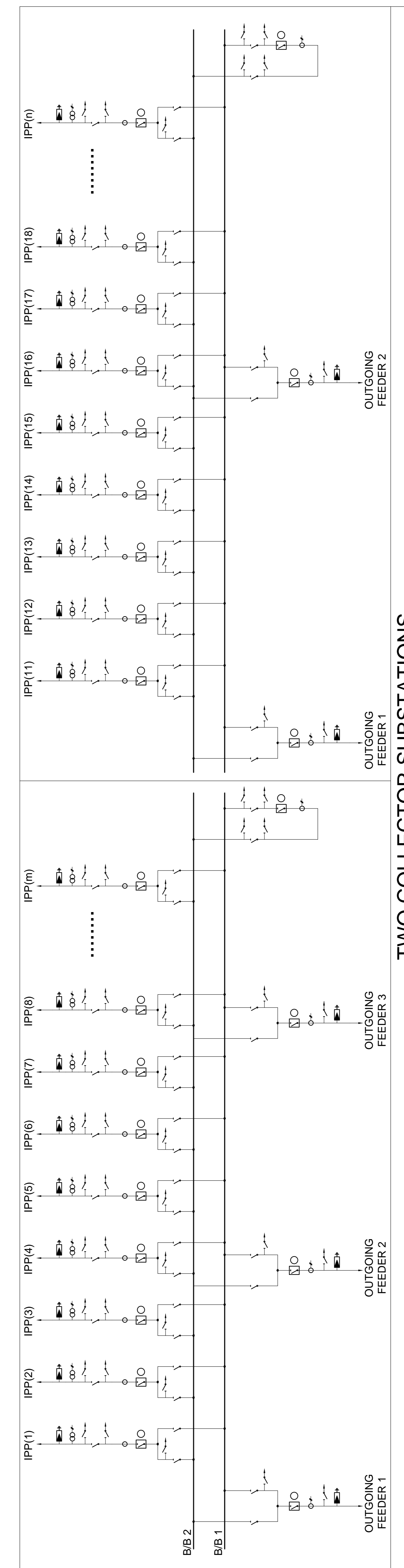
**ARUP**

Postnet Suite No. 53  
Private Bag X1, Melrose Arch  
2076  
Telephone (011) 218 7800  
Fax (011) 218 7801

Job No.	Area	Discipline	Dwg. No.	Sheet No.	Revision	Size
233426 - 00 - E - 6001 - 04					A	A0

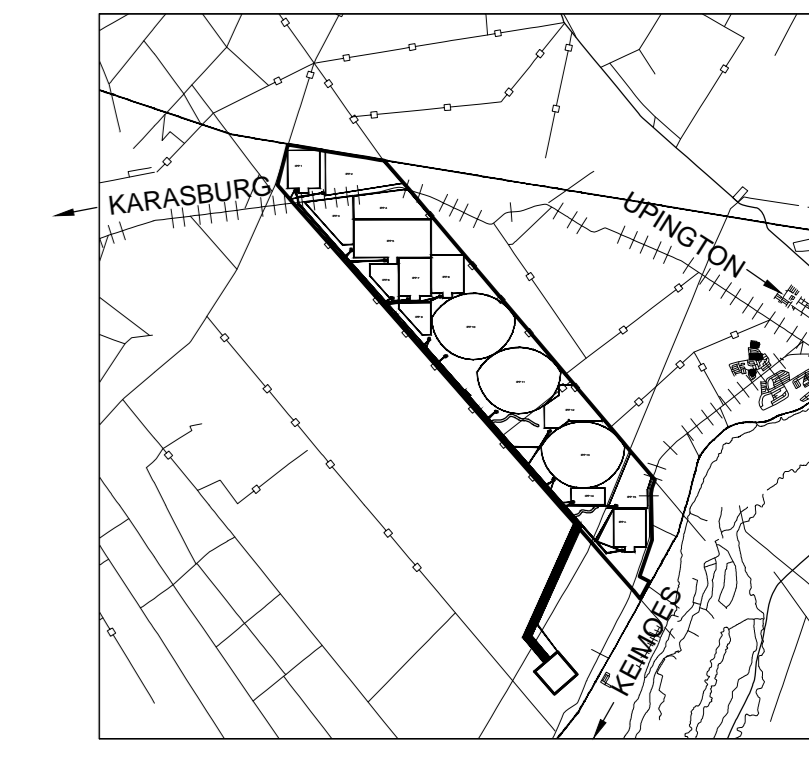


LAYOUT PLAN  
Scale 1:25 000



TWO COLLECTOR SUBSTATIONS

Reference Drawings	
Dwg No	Description
Ref 1	Ref_Desc 1



KEYPLAN  
Scale 1:250 000

NOTES:  
1. TECHNOLOGY OPTION 1 SHOWN FOR ILLUSTRATIVE PURPOSES. CONCEPTUAL APPROACH RELEVANT TO ALL MIX OPTIONS

**LEGEND**

	ARTERIAL ROUTE
	OHL
	FENCE
	RAILWAY LINE
	SITE BOUNDARY
	WATER COURSE

Revisions					
Rev	Date	Description	By	Chd	App
A		FIRST ISSUE		V.P.	Chk1 App1

Designed By	Drawn	Checked	Approved	Date	Scale
	V.P.				1:25 000

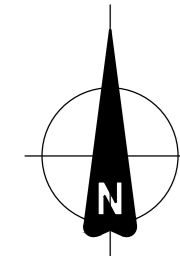
Client  
**CEF (SOC) Ltd**

Project  
**CEF UPINGTON SOLAR PARK FEASIBILITY STUDY**

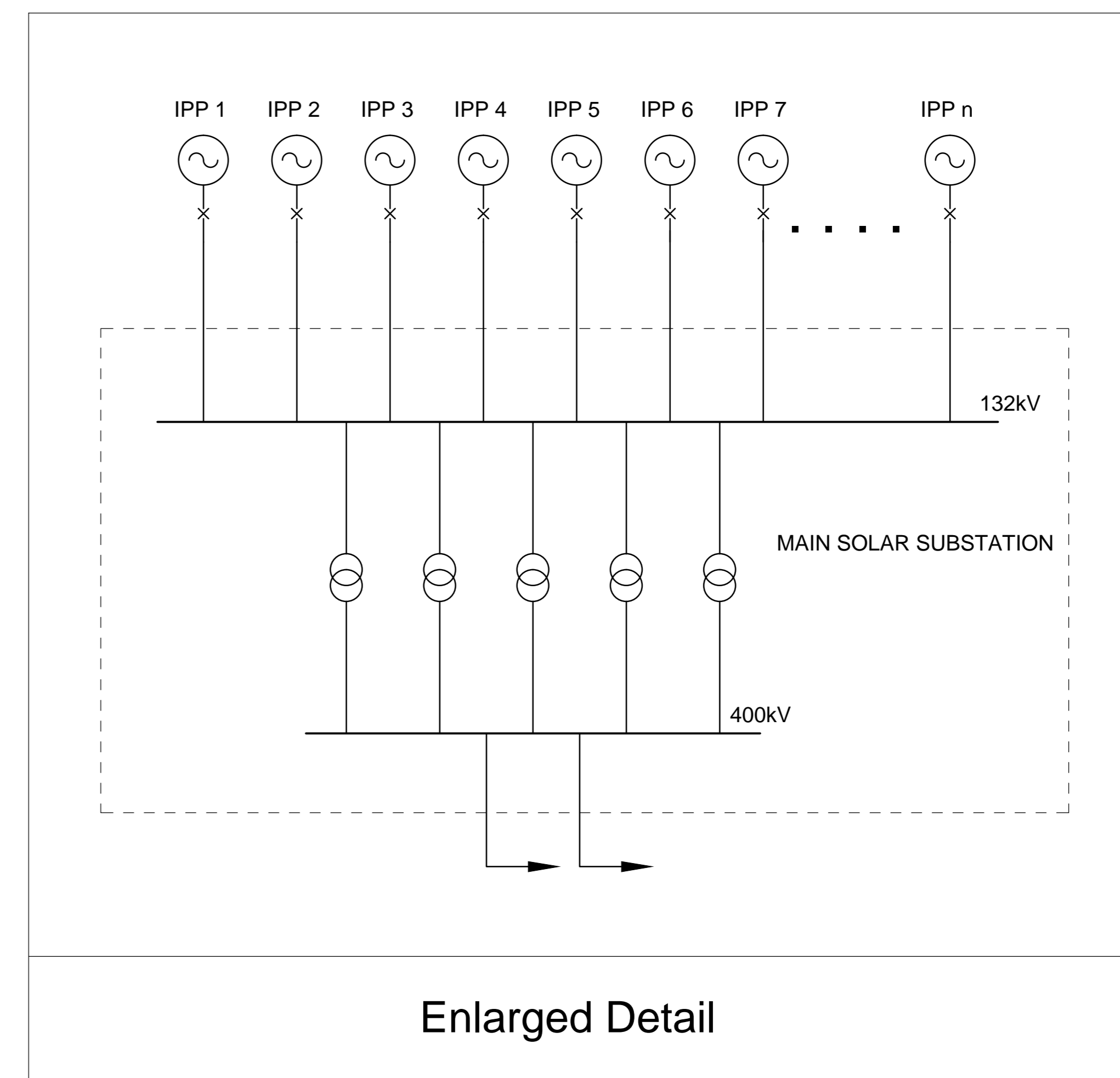
Drawing Title  
**ELECTRICAL RETICULATION STRATEGY - OPTION B TWO COLLECTOR SUBSTATIONS**



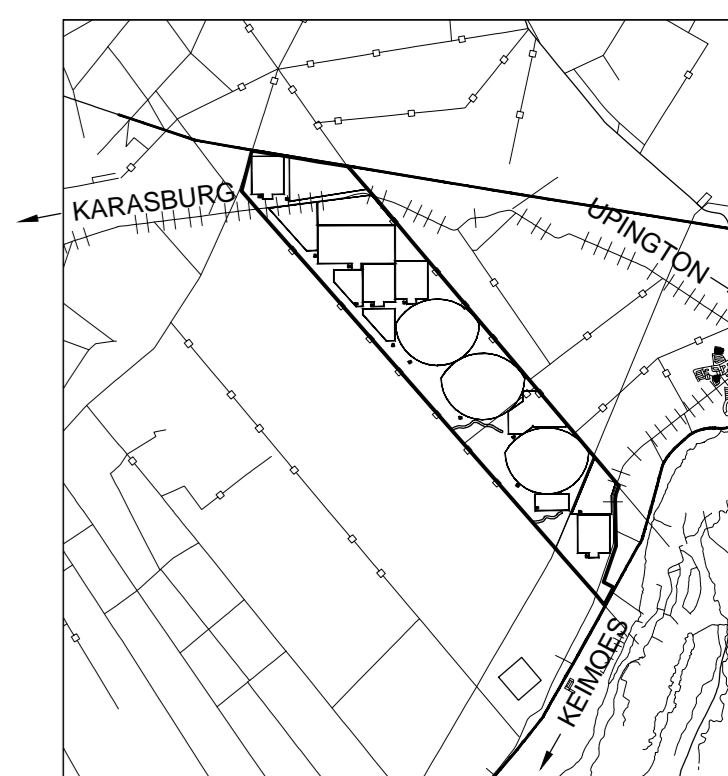
Job No.	Area	Discipline	Dwg. No.	Sheet No.	Revision	Size
233426 - 00 - E - 6001 - 05					A	A0



LAYOUT PLAN  
Scale 1:25 000



Reference Drawings	
Dwg No	Description



KEYPLAN  
Scale 1:250 000

NOTES:  
1. TECHNOLOGY OPTION 1 SHOWN FOR ILLUSTRATIVE PURPOSES. CONCEPTUAL APPROACH RELEVANT TO ALL MIX OPTIONS

LEGEND

- N14 ARTERIAL ROUTE
- OHL
- FENCE
- RAILWAY LINE
- SITE BOUNDARY
- WATER COURSE

Revisions					
Rev	Date	Description	By	Chd	App

Designed	Drawn	Checked	Approved	Date	Scale

Client  
**CEF (SOC) Ltd**

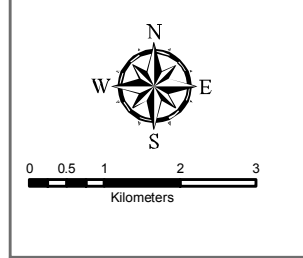
Project  
**CEF UPINGTON  
SOLAR PARK FEASIBILITY STUDY**

Drawing Title  
**ELECTRICAL RETICULATION  
STRATEGY - OPTION C  
INDIVIDUAL CONNECTIONS TO  
MAIN SOLAR SUBSTATION**




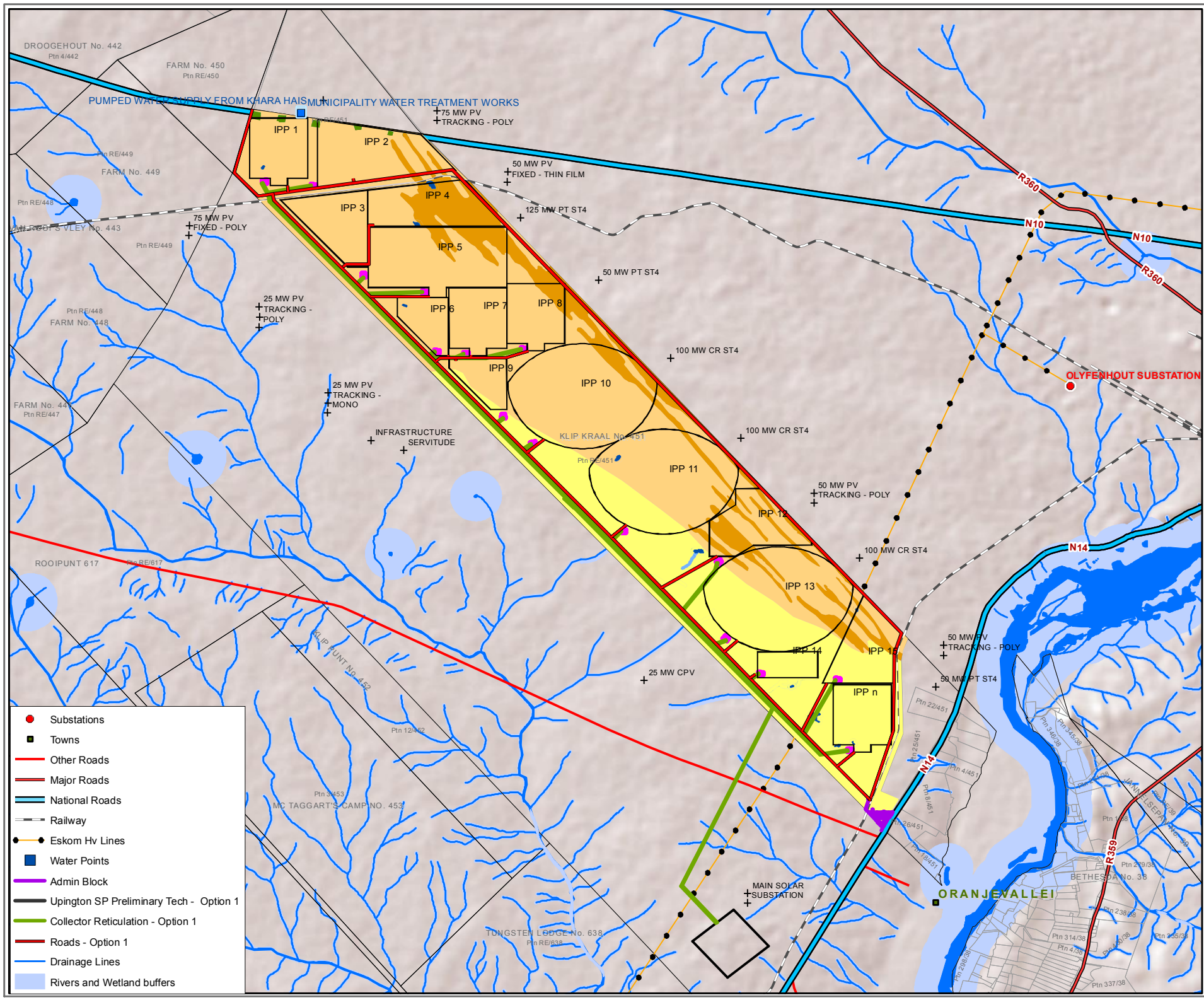
Job No.	Area	Discipline	Dwg. No.	Sheet No.	Revision	Size
233426 - 00 - E - 6001 - 06					A	A0

# 1 GW UPINGTON Solar Park Environmental Map (Option 1)



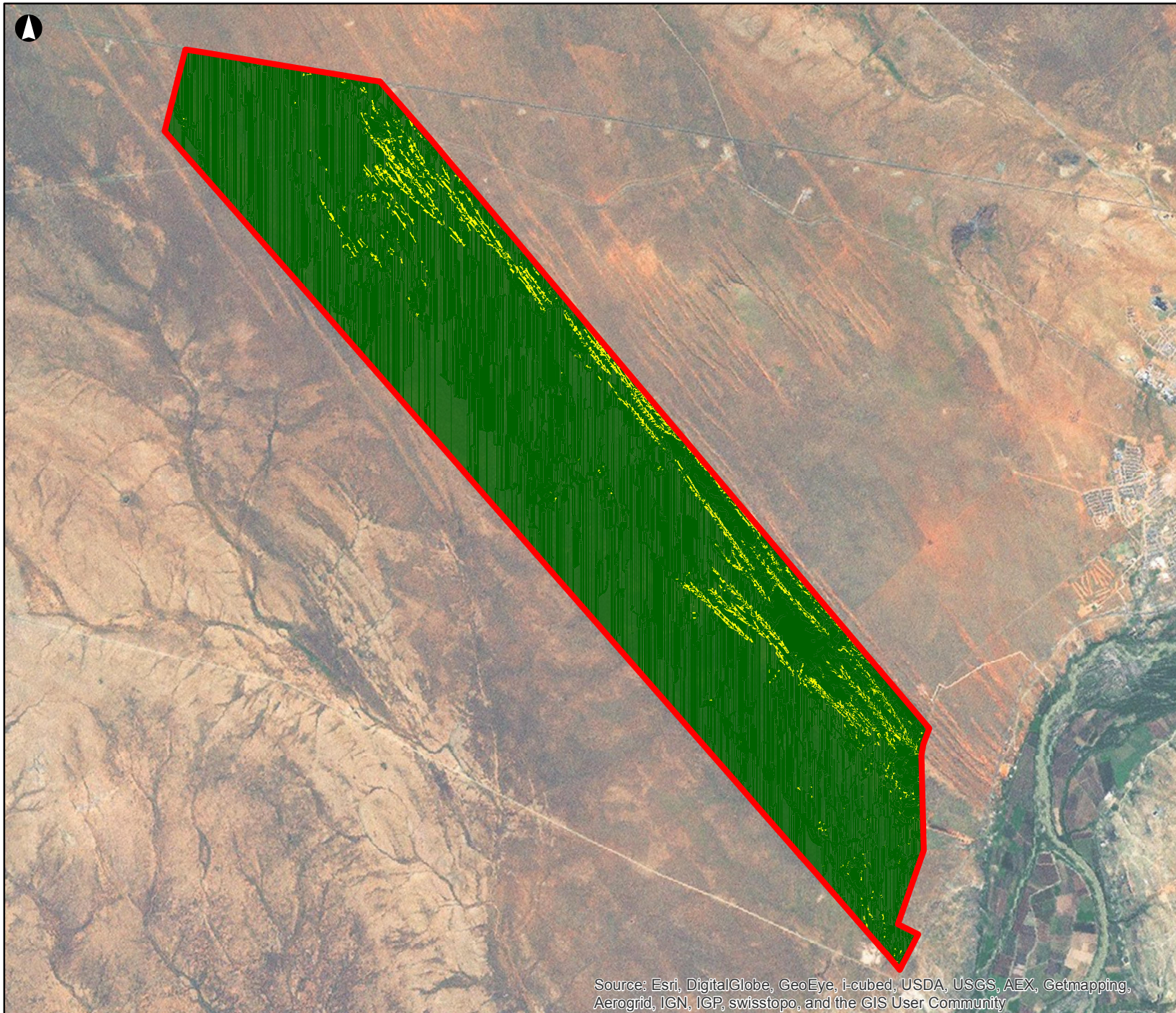
- Farm Portions
  - Farm Boundaries
  - NFEPA Wetlands
  - NFEPA Rivers
- Habitats**
- Linear Dunes
  - Sandy Plains
  - Calcrete Plains
  - Drainage Lines
  - Pans
  - Borrow Pit

**Lidwala Consulting Engineers**  
 MAP PREPARED BY: Katie Sassenberg  
 DATE MAP PRODUCED: 2014-05-27  
 TML023\_WGS84  
 Projection: Transverse\_Mercator  
 Central\_Meridian: 23 000000  
 Datum: D\_WGS\_1984

- Substations
- Towns
- Other Roads
- Major Roads
- National Roads
- Railway
- Eskom Hv Lines
- Water Points
- Admin Block
- Upington SP Preliminary Tech - Option 1
- Collector Reticulation - Option 1
- Roads - Option 1
- Drainage Lines
- Rivers and Wetland buffers





Legend

SITE

Surface Slope 1m TIN

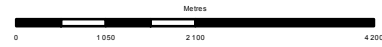
**% in Slope**

- 1 - 2 % (4899.11 ha)
- 3 - 4 % (237.82 ha)
- 5 % (0.09 ha)

The data used are copyrighted by the Chief Directorate National Geo-Spatial Information and the State

P0	2013-10-10	YO	YO	YO
----	------------	----	----	----

Issue	Date	By	Chkd	Appd
-------	------	----	------	------

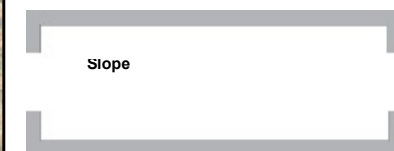


# ARUP

10 High Street  
Melrose Arch  
Tel +27 11 218 7600 Fax +27 11 218 7601  
www.arup.com

Client  
**oClientName**

Job Title  
**CEF SOLAR PARK P2**



Scale at A4  
**1:88 789**

Job No <b>000000-00</b>	Drawing Status <b>Preliminary</b>
----------------------------	--------------------------------------

Drawing No <b>002</b>	Issue <b>P0</b>
--------------------------	--------------------

Source: Esri, DigitalGlobe, GeoEye, i-cubed, USDA, USGS, AEX, Getmapping, Aerogrid, IGN, IGP, swisstopo, and the GIS User Community