



Kudumane Manganese Resources (Pty) Ltd

**REPORT FOR THE ADDITIONAL PLANNED INFRASTRUCTURE
AND MINING AREAS AT KUDUMANE MANGANESE MINE**

Heritage Impact Assessment

Issue Date: 20 June 2014

Revision No.: 1

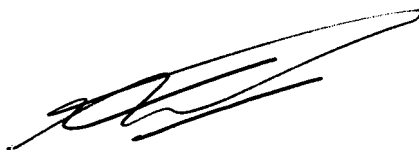
Project No.: DMR Reference Numbers: NC 30/6/1/2/2/268 MR &
NC 30/5/1/2/2/10053 MR
DENC Reference Number: NC/EIA/05/JTG/HOT/KUD/2013/
NCP/EIA/0000219/2013

Declaration of Independence

The report has been compiled by PGS Heritage an appointed Heritage Specialist for SLR Consulting (Africa) (Pty) Ltd. The views stipulated in this report are purely objective and no other interests are displayed during the decision making processes discussed in the Heritage Impact Assessment Process which includes this Heritage Impact Assessment Report as well as the final report.

HERITAGE CONSULTANT: PGS Heritage

CONTACT PERSON: Wouter Fourie
Tel: +27 (0) 12 332 5305
Email: wouter@gravesolutions.co.za




SIGNATURE: _____

ACKNOWLEDGEMENT OF RECEIPT

CLIENT: SLR Consulting (Africa) (Pty) Ltd

CONTACT PERSON: Caitlin Hird
Email: chird@slrconsulting.com
Tel: +27 11 467 0945
Fax: +27 11 467 0978

SIGNATURE: _____

Report Title	<i>Heritage Impact Assessment for the proposed new infrastructure for Kudumane Manganese Resources (Pty) Ltd (Kudumane), farms York A 279 (York) and Telele 312 (Telele) located approximately 3 km south west of the town of Hotazel in the John Taolo Gaetsewe District Municipality in the Northern Cape</i>		
Control	Name	Signature	Designation
Author	W Fourie		Heritage Specialist/ Principal Investigator
Reviewed	C Hird		SLR Consulting (Africa) (Pty) Ltd

EXECUTIVE SUMMARY

PGS Heritage was appointed by SLR Consulting (Africa) (Pty) Ltd to undertake a Heritage Impact Assessment (HIA) that forms part of the Environmental Management Plan (EMP) for the proposed new infrastructure for Kudumane Manganese Resources (Pty) Ltd (Kudumane), farms York A 279 (York) and Telele 312 (Telele) located approximately 3 km south west of the town of Hotazel in the John Taolo Gaetsewe District Municipality in the Northern Cape.

Heritage resources are unique and non-renewable and as such any impact on such resources must be seen as significant. This report focus expressly on the new proposed infrastructure, other management measures as listed and required in other HIA's conducted in the area must still be implemented for other heritage features identified in the larger mining area.

Archaeology

Previous studies conducted in the larger Hotazel and Black Rock areas has shown that the archaeological record is temporally confined to the Middle and Later Stone Age, while spatially distribution of such sites is concentrated around the riverine edges due to the harsh climate of the area.

Field work has confirmed this and of the one archaeological site associated with the MSA was identified in the study area.

Mitigation

- During site clearing a qualified archaeologist must monitor the site clearing and topsoil stripping within 150m of the river center line.
- If at any stage the site is disturbed a qualified archaeologist must be contracted to evaluate the damage and make recommendations on the appropriate mitigation measures.

Historical

The archival research has shown that the area was settled as early as the late 1700's with activity and settlements increasing into the mid-1800's with the establishment of the Lower Kuruman Native Reserve with its northern most limits less than 15 kilometres to the south of the study area. Furthermore, the settlement of white farmers from around 1897 to the early 1920 on the Kuruman River at places with names such as Boerdraai (just north of the

study area), Wessels 227 (1917), Dibiaghomo 226 (1914, but already settled by 1899) and Dikgathlong 268 (as early as 1894), is an indication that farmsteads and structures of significance can be present in the study area.

No historical structures or cemeteries were identified during the field work.

General

Further to these recommendations the general Heritage Management Guidelines in Section 5, need to be incorporated into the EMP for the project.

The overall impact of the development on heritage resources is seen as acceptably low and impacts can be mitigated to acceptable levels.

Contents

1	INTRODUCTION.....	10
1.1	Scope of the Study	10
1.2	Specialist Qualifications	10
1.3	Assumptions and Limitations	10
1.4	Legislative Context	11
1.5	Terminology and Abbreviations	12
2	TECHNICAL DETAILS OF THE PROJECT	17
2.1	Technical Project Description	17
3	CURRENT STATUS QUO.....	20
3.1.	Site Description	20
3.1	Archival findings	21
3.1.1	South African Heritage Resources Information System (SAHRIS)	21
3.2	Archaeological background	22
3.2.1	Early Stone Age (400 000 – 2 million years Before Present/BP)	23
3.2.2	Middle Stone Age (30 000 – 300 000 BP)	23
3.2.3	Later Stone Age (30 000 BP – recent times)	23
3.2.4	Rock Art	24
3.3	Archival/historical maps	25
3.3.1	Merensky Map, 1887	25
3.3.2	“Kuruman”, Undated	26
3.3.3	British Bechuanaland Map, 1894	28
3.3.4	Geological Map, 1925	28
3.3.5	Orange River Sheet 3, 1945	28
3.4	Aspects of the area’s history as revealed by the archival/desktop study	30
3.4.1	Settlement during the Later Stone Age	30
3.4.2	Early Black Settlement during the Late Iron Age and Historic Period	31
3.4.3	European Explorers and Visitors	32
3.4.4	The journey of Lichtenstein (1805)	32
3.4.5	Andrew Smith’s journey (1835)	33
3.4.6	British Protectorate	34
3.5	Historic Black Settlement	34
3.5.1	Situation at the beginning of the 19 th century	34
3.5.2	Lower Kuruman Native Reserve	35
3.5.3	The Langeberg Rebellion	36

3.6	Settlement of White Farmers	38
3.6.1	Farm Surveys	40
3.7	Possible heritage sites	40
3.8	Conclusions	41
3.8.1	Findings of the archival research Document	41
4	IMPACT ASSESSMENT	44
4.1	Field work Methodology	44
4.1.1	Archaeological Site – KU001	46
5	HERITAGE MANAGEMENT GUIDELINES.....	48
5.1	General Management Guidelines	48
5.2	All phases of the project	52
5.2.1	Archaeology	52
5.2.2	Procedure	54
5.2.3	Procedure for discovery of human remains / graves	54
6	CONCLUSIONS AND RECOMMENDATIONS.....	55
7	REFERENCES.....	56

List of Figures

Figure 1 – Human and Cultural Time line in Africa (Morris, 2008).....	16
Figure 2 – Local setting of project	18
Figure 3 – Additional infrastructure and mining rights areas as proposed by existing mining right amendment and new mining right application respectively (new infrastructure in orange)	19
Figure 4 – General view of wooded grassland area	20
Figure 5 – General view of riverine area	21
Figure 6 - Map depicting the study area and surrounding region. Note that almost all the towns are situated on or near the main rivers (National Archives, Maps, 3/302).....	26
Figure 7 - Depiction of the wider landscape surrounding the study area (National Archives, Maps, 3/533). The so-called Lower Kuruman Native Reserve is shown on the right.	27
Figure 8 - Close-up view of the study area and surroundings. Note the location of the towns close to river courses (demarcated in black line). A road (stippled line) can also be seen crossing over the vicinity of the study area from Dikgathlong southwards. (National Archives, Maps, 3/533).	27
Figure 9 - Geological map of the study area and surrounding region (National Archives, Maps, 2/304).	29
Figure 10 - Map depicting the study area and surrounding region (National Archives, Maps, 2/1085).	30
Figure 11 - “Tlharo of the Kalahari Desert” A sketch that appeared in Dr. Andrew Smith’s travel journal (Lye, 1975:171).	31
Figure 12 - “Tlhaping women cultivating gardens and singing” One of the sketches appearing in Dr. Andrew Smith’s journal (Lye, 1975:171).	32
Figure 13 - Map showing the original demarcation of the Lower Kuruman Native Reserve..	36
Figure 14 – Photograph of Galeshewe (National Archives, TAB, 36277).	37
Figure 15 - Police document listing all the people who resided on the banks of the Kuruman River at the time of an inspection in 1908. The names of a number of the early white pioneers in the area are also listed here.....	39
Figure 16 - Historic photograph of an early farmer’s dwelling along the Kuruman River (Van der Merwe, 1949).....	41
Figure 17 – Heritage Sensitivity Map (based on satellite imagery and topographical maps). 43	
Figure 18 – Map with track logged survey including the identified heritage sites	45
Figure 19 – Position of Site KU001 in relation to the proposed infrastructure.....	46
Figure 20 – View of site (KU001)	47

Figure 21 – MSA Lithics found on site KU0011) 47

List of Appendices

- A Heritage Map
- B Legislative Requirements – Terminology and Assessment Criteria
- C Heritage Assessment Methodology
- D The Significance Rating Scales for the Proposed Prospecting Activities on Heritage Resources

1 INTRODUCTION

PGS Heritage was appointed by SLR Consulting (Africa) (Pty) Ltd to undertake a Heritage Impact Assessment (HIA) that forms part of the Environmental Management Plan (EMP) for the proposed new infrastructure for Kudumane Manganese Resources (Pty) Ltd (Kudumane), farms York A 279 (York) and Telele 312 (Telele) located approximately 3 km south west of the town of Hotazel in the John Taolo Gaetsewe District Municipality in the Northern Cape.

1.1 Scope of the Study

The aim of the study is to identify possible heritage sites and finds that may occur in the proposed prospecting area. The HIA aims to inform the EMP to assist the developer in managing the discovered heritage resources in a responsible manner, in order to protect, preserve, and develop them within the framework provided by the National Heritage Resources Act of 1999 (Act 25 of 1999) (NHRA).

1.2 Specialist Qualifications

This Heritage Impact Assessment Report was compiled by PGS Heritage (PGS).

The staff at PGS has a combined experience of nearly 40 years in the heritage consulting industry. PGS and its staff have extensive experience in managing HIA processes. PGS will only undertake heritage assessment work where they have the relevant expertise and experience to undertake that work competently.

Wouter Fourie, the Project Coordinator, is registered with the Association of Southern African Professional Archaeologists (ASAPA) as a Professional Archaeologist and is accredited as a Principal Investigator; he is further an Accredited Professional Heritage Practitioner with the Association of Professional Heritage Practitioners (APHP).

1.3 Assumptions and Limitations

Not detracting in any way from the comprehensiveness of the fieldwork undertaken, it is necessary to realise that the heritage resources located during the fieldwork do not necessarily represent all the possible heritage resources present within the area. Various factors account for this, including the subterranean nature of some archaeological sites and the current dense vegetation cover. As such, should any heritage features and/or objects not included in the present inventory be located or observed, a heritage specialist must immediately be contacted.

Such observed or located heritage features and/or objects may not be disturbed or removed in any way until such time that the heritage specialist has been able to make an assessment as to the significance of the site (or material) in question. This applies to graves and cemeteries as well. In the event that any graves or burial places are located during the development, the procedures and requirements pertaining to graves and burials will apply as set out below.

1.4 Legislative Context

The identification, evaluation and assessment of any cultural heritage site, artefact or find in the South African context is required and governed by the following legislation:

- i. National Environmental Management Act (NEMA), Act 107 of 1998
- ii. National Heritage Resources Act (NHRA), Act 25 of 1999
- iii. Mineral and Petroleum Resources Development Act (MPRDA), Act 28 of 2002
- iv. Development Facilitation Act (DFA), Act 67 of 1995

The following sections in each Act refer directly to the identification, evaluation and assessment of cultural heritage resources.

- i. National Environmental Management Act (NEMA) Act 107 of 1998
 - a. Basic Environmental Assessment (BEA) – Section (23)(2)(d)
 - b. Environmental Scoping Report (ESR) – Section (29)(1)(d)
 - c. Environmental Impact Assessment (EIA) – Section (32)(2)(d)
 - d. Environmental Management Plan (EMP) – Section (34)(b)
- ii. National Heritage Resources Act (NHRA) Act 25 of 1999
 - a. Protection of Heritage Resources – Sections 34 to 36; and
 - b. Heritage Resources Management – Section 38
- iii. Mineral and Petroleum Resources Development Act (MPRDA) Act 28 of 2002
 - a. Section 39(3)
- iv. Development Facilitation Act (DFA) Act 67 of 1995
 - a. The GNR.1 of 7 January 2000: Regulations and rules in terms of the Development Facilitation Act, 1995. Section 31.

The NHRA stipulates that cultural heritage resources may not be disturbed without authorization from the relevant heritage authority. Section 34(1) of the NHRA states that,

“no person may alter or demolish any structure or part of a structure which is older than 60 years without a permit issued by the relevant provincial heritage resources authority...” The NHRA is utilized as the basis for the identification, evaluation and management of heritage resources and in the case of CRM those resources specifically impacted on by development as stipulated in Section 38 of NHRA, and those developments administered through NEMA, MPRDA and the DFA legislation. In the latter cases the feedback from the relevant heritage resources authority is required by the State and Provincial Departments managing these Acts before any authorizations are granted for development. The last few years have seen a significant change towards the inclusion of heritage assessments as a major component of Environmental Impacts Processes required by NEMA and MPRDA. This change requires us to evaluate the Section of these Acts relevant to heritage (Fourie, 2008).

The NEMA 23(2)(b) states that an integrated environmental management plan should, “...identify, predict and evaluate the actual and potential impact on the environment, socio-economic conditions and cultural heritage”.

A study of subsections (23)(2)(d), (29)(1)(d), (32)(2)(d) and (34)(b) and their requirements reveals the compulsory inclusion of the identification of cultural resources, the evaluation of the impacts of the proposed activity on these resources, the identification of alternatives and the management procedures for such cultural resources for each of the documents noted in the Environmental Regulations. A further important aspect to be taken account of in the Regulations under NEMA is the Specialist Report requirements laid down in Section 33 of the regulations (Fourie, 2008).

1.5 Terminology and Abbreviations

Archaeological resources

This includes:

- i. material remains resulting from human activity which are in a state of disuse and are in or on land and which are older than 100 years including artefacts, human and hominid remains and artificial features and structures;
- ii. rock art, being any form of painting, engraving or other graphic representation on a fixed rock surface or loose rock or stone, which was executed by human agency and which is older than 100 years, including any area within 10m of such representation;
- iii. wrecks, being any vessel or aircraft, or any part thereof, which was wrecked in South Africa, whether on land, in the internal waters, the territorial waters or in the maritime culture zone of the republic as defined in the Maritimes Zones Act, and any

- cargo, debris or artefacts found or associated therewith, which is older than 60 years or which SAHRA considers to be worthy of conservation;
- iv. features, structures and artefacts associated with military history which are older than 75 years and the site on which they are found.

Cultural significance

This means aesthetic, architectural, historical, scientific, social, spiritual, linguistic or technological value or significance

Development

This means any physical intervention, excavation, or action, other than those caused by natural forces, which may in the opinion of the heritage authority in any way result in a change to the nature, appearance or physical nature of a place or influence its stability and future well-being, including:

- i. construction, alteration, demolition, removal or change in use of a place or a structure at a place;
- ii. carrying out any works on or over or under a place;
- iii. subdivision or consolidation of land comprising a place, including the structures or airspace of a place;
- iv. constructing or putting up for display signs or boards;
- v. any change to the natural or existing condition or topography of land; and
- vi. any removal or destruction of trees, or removal of vegetation or topsoil

Early Stone Age

The archaeology of the Stone Age between 700 000 and 2 500 000 years ago.

Fossil

Mineralised bones of animals, shellfish, plants and marine animals. A trace fossil is the track or footprint of a fossil animal that is preserved in stone or consolidated sediment.

Heritage

That which is inherited and forms part of the National Estate (historical places, objects, fossils as defined by the National Heritage Resources Act 25 of 1999).

Heritage resources

This means any place or object of cultural significance and can include (but not limited to) as stated under Section 3 of the NHRA,

- places, buildings, structures and equipment of cultural significance;
- places to which oral traditions are attached or which are associated with living heritage;
- historical settlements and townscapes;
- landscapes and natural features of cultural significance;
- geological sites of scientific or cultural importance;
- archaeological and palaeontological sites;
- graves and burial grounds, and
- sites of significance relating to the history of slavery in South Africa;

Holocene

The most recent geological time period which commenced 10 000 years ago.

Late Stone Age

The archaeology of the last 20 000 years associated with fully modern people.

Late Iron Age (Early Farming Communities)

The archaeology of the last 1000 years up to the 1800's, associated with iron-working and farming activities such as herding and agriculture.

Middle Stone Age

The archaeology of the Stone Age between 20 000-300 000 years ago, associated with early modern humans.

Palaeontology

Any fossilised remains or fossil trace of animals or plants which lived in the geological past, other than fossil fuels or fossiliferous rock intended for industrial use, and any site which contains such fossilised remains or trace.

ABBREVIATIONS	DESCRIPTION
AIA	Archaeological Impact Assessment
ASAPA	Association of South African Professional Archaeologists
CRM	Cultural Resource Management
DEA	Department of Environmental Affairs
DWA	Department of Water Affairs
ECO	Environmental Control Officer
EIA practitioner	Environmental Impact Assessment Practitioner
EIA	Environmental Impact Assessment
ESA	Early Stone Age
GPS	Global Positioning System
HIA	Heritage Impact Assessment
I&AP	Interested & Affected Party
LSA	Late Stone Age
LIA	Late Iron Age
MSA	Middle Stone Age
MIA	Middle Iron Age
NEMA	National Environmental Management Act
NHRA	National Heritage Resources Act
PHRA	Provincial Heritage Resources Authority
PSSA	Palaeontological Society of South Africa
SADC	Southern African Development Community
SAHRA	South African Heritage Resources Agency

Refer to **Appendix C** for further discussions on heritage management and legislative frameworks

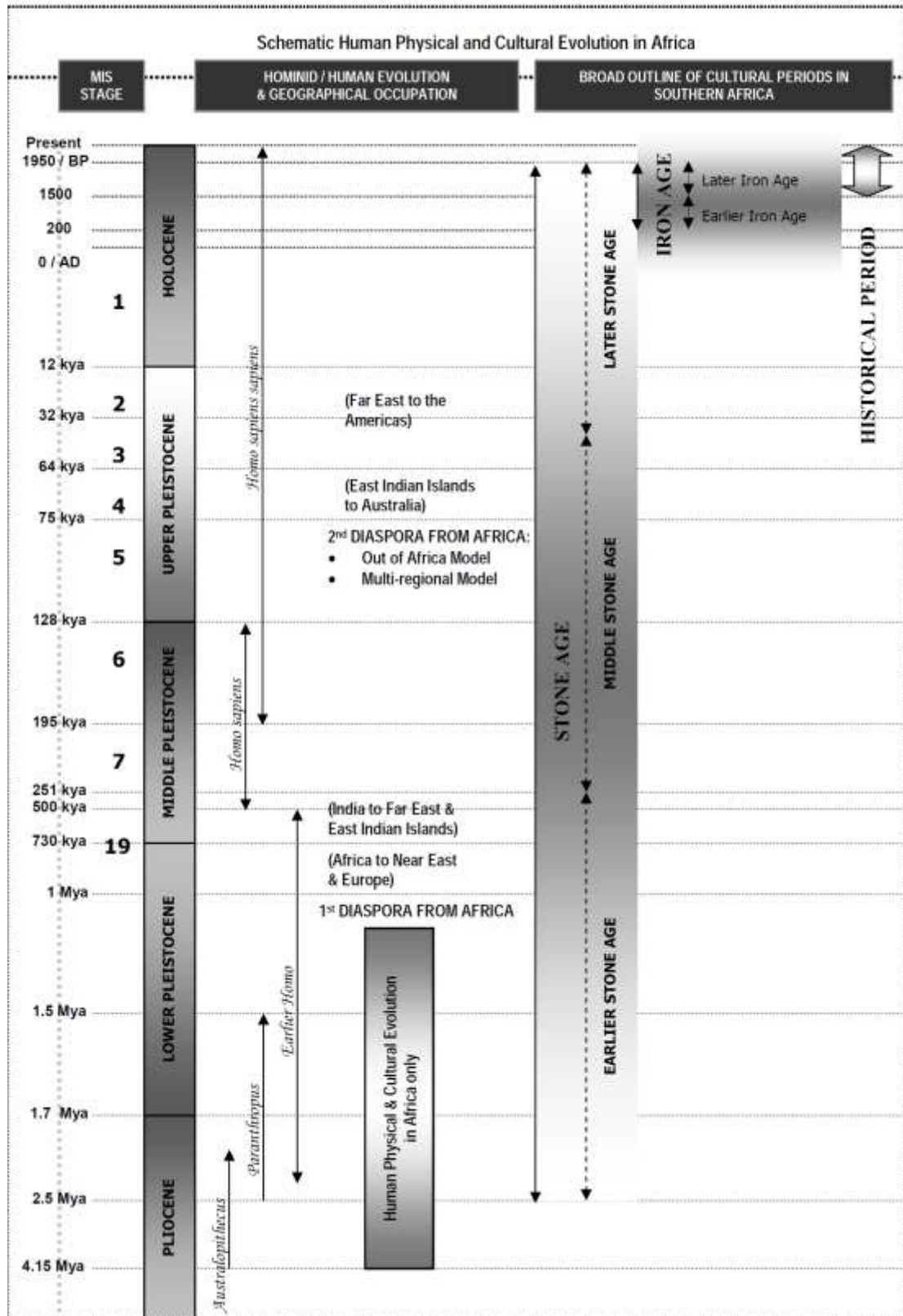


Figure 1 – Human and Cultural Time line in Africa (Morris, 2008)

2 TECHNICAL DETAILS OF THE PROJECT

2.1 Technical Project Description

The following brief project description for the project has been supplied by SLR Consulting.

Kudumane Manganese Resources (Pty) Ltd (Kudumane), a South African mining company holds a mining right on the farms York A 279 (York) and Telele 312 (Telele) located approximately 3 km south west of the town of Hotazel in the John Taolo Gaetsewe District Municipality in the Northern Cape. Refer to **Figure 2** for local setting.

The Environmental Impact Assessment (EIA) and Environmental Management Programme (EMP) submitted as part of the approved mining right application covers the opencast mining and infrastructure on the farm York and underground mining on the farm Telele under the DMR authorisation (NC 30/6/1/2/2/268 MR). In broad terms the approved EIA/EMP included the establishment of an opencast and future underground mining operation, associated residue handling and disposal facilities, a crushing and screening plant, water management facilities, rail and road transport infrastructure and various support infrastructure and services.

Kudumane now wishes to expand its mining operations and applied for a new mining right to include the farms Kipling 217 (Kipling), Devon 277 (Devon) and Hotazel 280 (Hotazel). In addition to adding new mining rights to its existing mining rights areas, Kudumane intends to establish additional infrastructure to what has already been approved.

Kudumane submitted a new mining right application for the inclusion of additional mining areas on the farms Kipling, Devon and Hotazel in November 2013. The application was accepted by the Department of Mineral and Resources (DMR) on 5 December 2013. In line with the requirements of the MPRDA, an environmental impact assessment has to be undertaken and an EMP submitted in support of the mining right application. In this regard, Kudumane will undertake an environmental impact assessment to amend its approved EMP to incorporate these additional mining areas and associated infrastructure. In line with this, a consolidated scoping report and EIA/EMP report will be submitted in support of both the new mining right application as well as the amendment to the existing mining right. The proposed additional infrastructure on the existing mining rights area (namely York and Telele) as well as the proposed additional mining rights areas (Devon, Hotazel and Kipling) is outlined below:

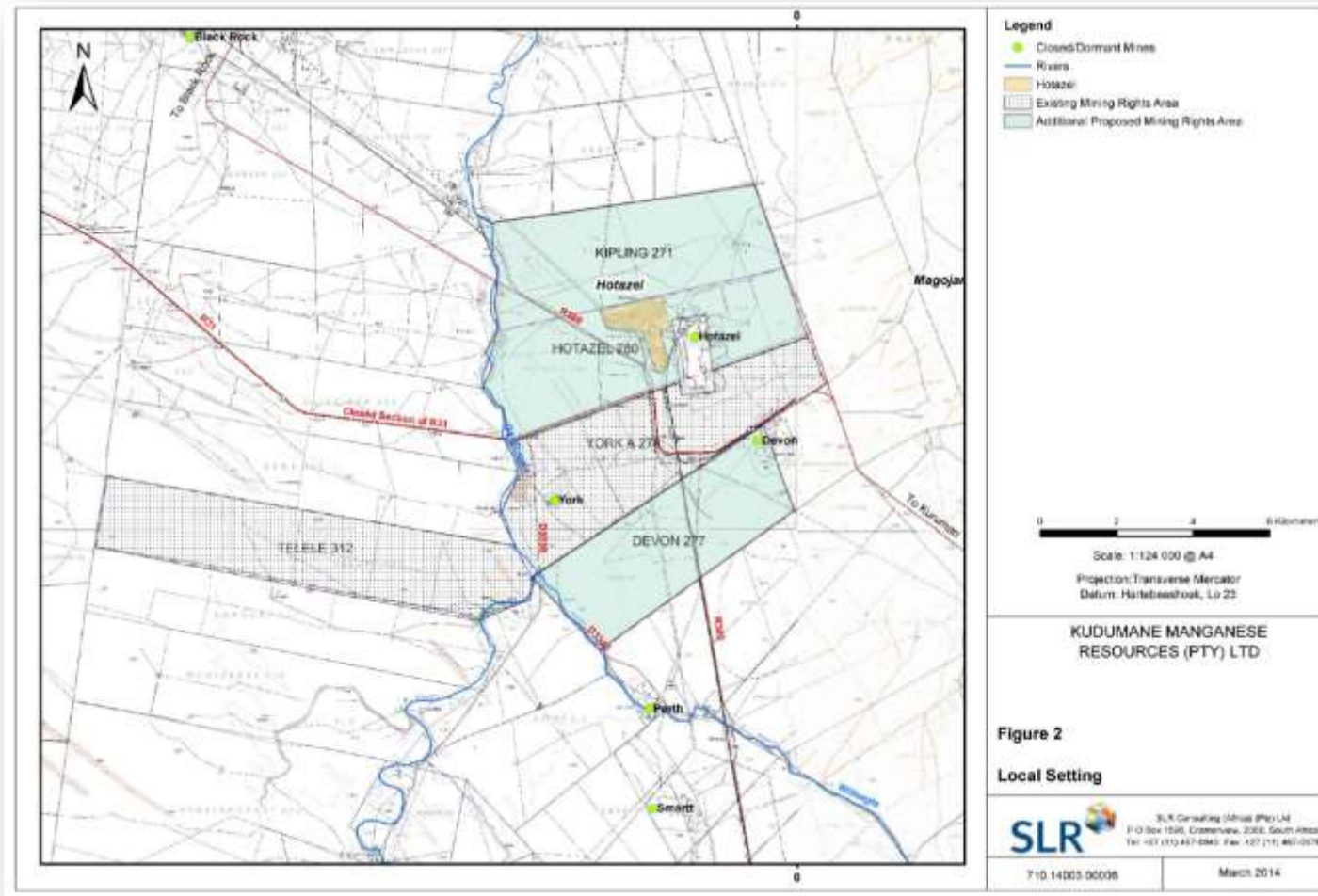


Figure 2 – Local setting of project

The following infrastructure (**Figure 3**) is proposed on the additional planned mining rights areas (DMR reference number NC 30/5/1/2/2/10053MR):

- Devon: mining and removal of manganese ore from the historical pit and tailings storage facility (TSF);
- Hotazel: opencast activities which will include haul roads and utilisation of the existing road network; conveyor system to York; and
- Kipling: The pit located on the farm Hotazel may in future extend onto Kipling

Kudumane will furthermore amend its EMP to make provision for the additional infrastructure which is proposed within the existing mining rights area. The following is planned on the existing mining rights area (DMR reference number NC 30/6/1/2/2/268 MR):

- Telele: underground mining related surface infrastructure, which could include a ventilation shaft, mine shaft and conveyor system; and
- York : additional surface infrastructure including WRDs and stockpile area

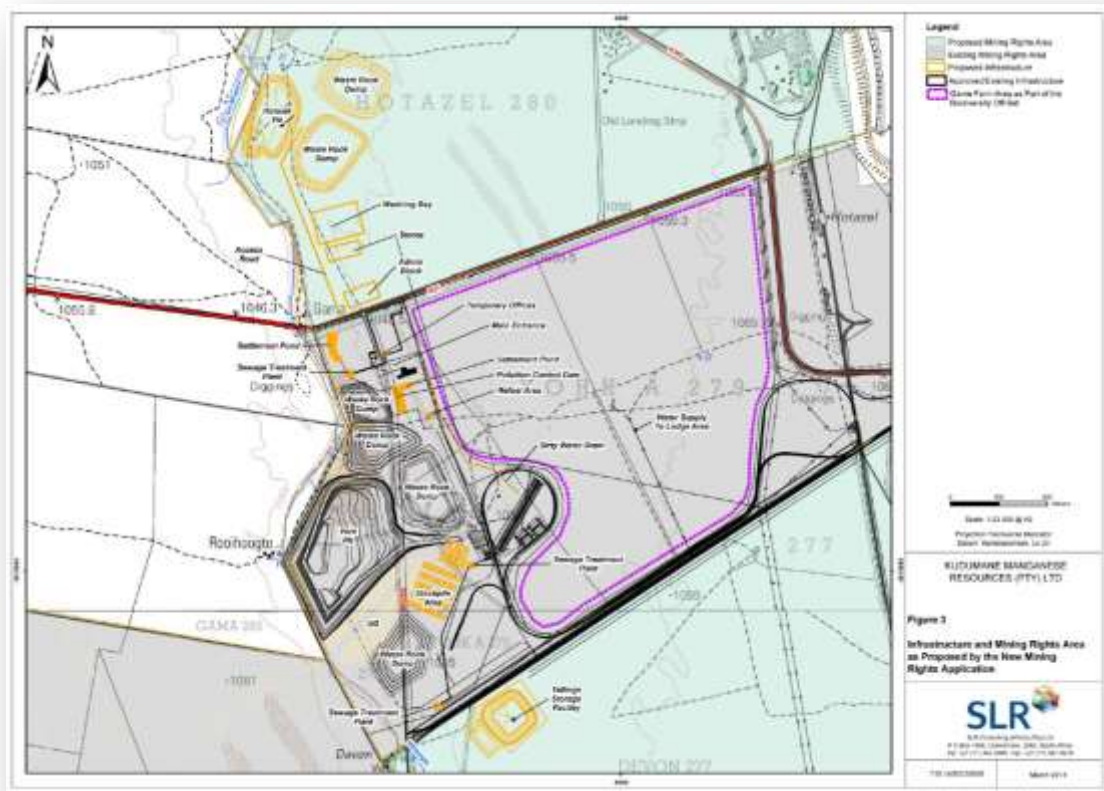


Figure 3 – Additional infrastructure and mining rights areas as proposed by existing mining right amendment and new mining right application respectively (new infrastructure in orange)

3 CURRENT STATUS QUO

3.1. Site Description

The study area is located in very flat-lying terrain at 1020-1040m amsl, rising from the Ga-Mogara River on the western boundary eastwards. The general condition of the property ranges from wooded grass land (**Figure 4**) to calcretes based riverine areas (**Figure 5**).



Figure 4 – General view of wooded grassland area



Figure 5 – General view of riverine area

3.1 Archival findings

The archival research focused on available information sources that were used to compile a background history of the study area and surrounds. This data then informed the possible heritage resources to be expected during field surveying.

3.1.1 South African Heritage Resources Information System (SAHRIS)

A scan of SAHRIS has revealed the following studies conducted in and around the study area of this report:

- KAPLAN, J (2010). Archaeological Impact Assessment for the proposed 132 kV UMK loop-in powerline near Hotazel, Northern Cape
- MATAKOMA HERITAGE CONSULTANTS (2005). Hotazel Manganese Mines: Wessels Mine on Section of the Farms Wessels 227, Dibiaghomo 226 and Dikgathlong 268

Mamatwan Mine on Section of the Farms Goid 329 and Mamatwan 331, Heritage Assessment

- MATAKOMA HERITAGE CONSULTANTS. 2006. Kalahari Manganese Mines, Heritage Assessment, on Umtu 281, Olive Pan 282, Gama 283
- PELSER, A (2012). A report on a Heritage Impact Assessment (AIA) for the proposed photo-voltaic solar power generation plant on the Farm Adams 328 near Hotazel in the Northern Cape, Archaetnos CC
- PGS HERITAGE. (2009). Heritage Impact Assessment for Ntsimbintle Mining (Pty) Ltd on Portions 1, 2, 3 and 8 of the farm Mamatwan 331 and the farm Moab 700 in the Kgalagadi District Municipality of the Northern Cape Province. Pretoria.
- PGS HERITAGE. (2010). Heritage Impact Assessment for the Amari Kongoni Manganese Mine on Portion 1 and a section of the Remainder of the farm Kongoni 311 in the Kgalagadi District Municipality of the Northern Cape Province. Pretoria.
- PGS HERITAGE. (2010). Heritage Impact Assessment for the Proposed Lehating Mining (Pty) Ltd underground manganese mine on Portions of the Farm Lehating 714, approximately 20km northwest of Hotazel, Northern Cape Province . Pretoria.
- PGS HERITAGE (2013). Prospecting activities on the farm Gloria 266, near Hotazel in the Northern Cape Province Heritage Impact Assessment
- PGS HERITAGE (2013) Prospecting activities on the farm Wessels, near Hotazel in the Northern Cape Province Heritage Impact Assessment
- PISTORIUS, J.C.C. (2008). A phase 1 heritage impact assessment (HIA) study for a proposed new powerline for the United Manganese of Kalahari (UMK) mine near Hotazel in the Northern Cape Province of South Africa.
- VAN VOLLENHOVEN, A. (2012) A Report on a Heritage Impact Assessment for the Proposed Main Street 778 (Pty) Ltd Mining Right Application close to Hotazel, Northern Cape Province

The following section leans heavily on previous archival studies conducted by PGS Heritage in the Hotazel/Black Rock Areas (PGS Heritage, 2009; PGS Heritage, 2010; PGS Heritage, 2010).

3.2 Archaeological background

Most archaeological material in the Northern Cape is found near water sources such as rivers, pans and springs, as well as on hills and in rock shelters. Sites usually comprise of

open sites where the majority of evidence of human occupation is scatters of stone tools (Parsons 2003).

3.2.1 Early Stone Age (400 000 – 2 million years Before Present/BP)

An important archaeological site in the region is the Wonderwerk Cave, located approximately 90 km to the south. The Early Stone Age (ESA) levels at Wonderwerk Cave date to approximately 780 000 years old and are characterised by Acheulean stone tools such as prepared cores, bifacial cleavers and refined hand axes. A few pieces of haematite were also found in the uppermost MSA layers. Bedding material recovered indicates that the site was used as a home base by the end of the ESA. A few small irregular flakes and cores may belong to the older Oldowan era, but the dating of this material is uncertain (Beaumont & Vogel 2006).

3.2.2 Middle Stone Age (30 000 – 300 000 BP)

Middle Stone Age (MSA) artefacts belonging to the Fauresmith industry are also found in the region. The Fauresmith is characterised by prepared cores, long, narrow flake blades, convergent points and small, broad hand axes (Mitchell 2002). Also at Wonderwerk, layers with Fauresmith tools were dated to 276 00 – 510 000 BP. Associated with the MSA materials were several incised stone slabs, most with curved parallel lines. Pieces of haematite were also found. The cave was abandoned between 70 000 and 12 500 BP due to significantly drier conditions. During this time, much of the region was abandoned and settlement only occurred at a few sites near permanent water sources (Beaumont & Vogel 2006).

3.2.3 Later Stone Age (30 000 BP – recent times)

The earlier LSA industry of the region forms part of the Oakhurst industry (some have labelled this local variant the Kuruman), characterised by rare retouched artefacts, most of which are large scrapers that are oblong with retouch on the side. The predominant raw materials are banded ironstone and dolomite. Very few adzes and blades are found, while backed artefacts and bone tools are absent. Ostrich eggshell beads and fragments are found (Humphreys & Thackeray 1983). At Wonderwerk, Oakhurst assemblages were dated to 8000 – 10 500 BP (Beaumont & Vogel 2006).

This was followed by the Wilton industry, characterised by the use of various raw materials including banded ironstone, chert, chalcedony, jasper and quartz. The main retouched tools are elongated scrapers with retouch on the end and backed artefacts such as segments and blades. Other retouched tools include adzes, unifacial points, borers and notched artefacts. At other sites, bifacial points and bifacial tanged and barbed arrowheads are found. At Wonderwerk, a few bone points have been found. Ostrich eggshell beads, pendants and decorated fragments, as well as stone rings were found (Humphreys & Thackeray 1983). Wilton layers at Wonderwerk have been dated to 2000 – 8000 BP. Associated with the LSA materials were 20 fine-line incised engraved stone slabs, most with schematic motifs. One example of a mammal depiction has been found. Pieces of haematite and specularite were also found in these layers (Beaumont & Vogel 2006).

Pottery made its appearance in the region by approximately 1400 BP and at Wonderwerk, Ceramic Later Stone Age layers have been dated to 900 – 2000 BP (Humphreys & Thackeray 1983; Beaumont & Vogel 2006). Two discrete, contemporary stone tool industries are associated with pottery remains in the Northern Cape: Swartkop and Doornfontein (Beaumont *et al.* 1995). Swartkop is a Wilton industry characterised by circular blades, a high proportion of backed blades, coarse undecorated pottery sherds that commonly contain grass temper, and a few iron items. It seems scrapers were favoured over blades on the Ghaap plateau (Humphreys & Thackeray 1983). These sites are usually found near water sources, such as pans and springs, or on the sides of low hills. Stone circles and ovals are sometimes also found and may represent the bases of dwellings. A late phase of this industry can be linked with the *Xam* San who lived in the Karoo.

3.2.4 Rock Art

Rock engravings are principally found in the interior of South Africa and are plentiful in the Northern Cape. Engravings are found on rocky outcrops, river beds and boulders. They are made by pecking away the surface of the rock with another rock, incising it with a sharp stone or scraping it off with another stone. Unfortunately, there are no scientific methods for securely dating engravings and research into this is still at an experimental stage.

Most engravings were made by the San and were associated with their religious beliefs and rituals. San shamans went into trance to perform certain tasks such as controlling game, protecting the group and rainmaking. Certain animals were believed to hold supernatural power and thus many of the engraved animals can be seen as both sources and symbols of

supernatural power. The places where engravings were made were also sources of supernatural power, especially in rainmaking rituals. Certain geometrics such as zigzags and dots are likely to have been associated with forms called entoptics seen whilst in trance (Dowson 1992).

Some engravings—particularly those featuring non-entoptic geometrics and aprons—were probably made by Khoekhoen people. Similar motifs are found in finger painted Khoekhoen rock art sites in certain regions of the Northern Cape, especially in the Vaal-Harts region to the east. Khoekhoen rock art is typified by finger paintings and roughly pecked engravings of geometrics that are located near water sources (Smith & Ouzman 2004). The rock paintings found in the Kuruman hills (Morris 1988) are probably of Khoekhoen authorship. Korana rock art—mostly painted—has also been identified in the Vaal-Harts region but may stretch into the Daniëlskuil region (Ouzman 2005). These depictions are characterised by finger painted and rough brush painted horses, human figures, geometrics, aprons, guns and finger dots. They are painted in shelters that are either hidden or not easily accessible. The complex issues of ethnicity and authorship of rock art—especially engravings—are still being researched.

3.3 Archival/historical maps

A number of maps depicting the study area were located. Enlarged sections of these maps are presented below. A short discussion on each of these maps is also made.

3.3.1 Merensky Map, 1887

(National Archives, Maps, 3/302)

The map depicted in **Figure 4** below is titled “*Original Map of South Africa*”. It was compiled by Reverend A. Merensky and dates from 1887. The map does not appear to be all that accurate, but provides some idea as to the characteristics of the study area at the time (refer **Figure 4**).

It is evident from the enlarged map component below that many of the settlements in the general vicinity of the study area were located on the existing rivers. See for example ‘*Ga Maperi*’, ‘*Batlaros*’, ‘*Old Lattaku*’ and so forth.

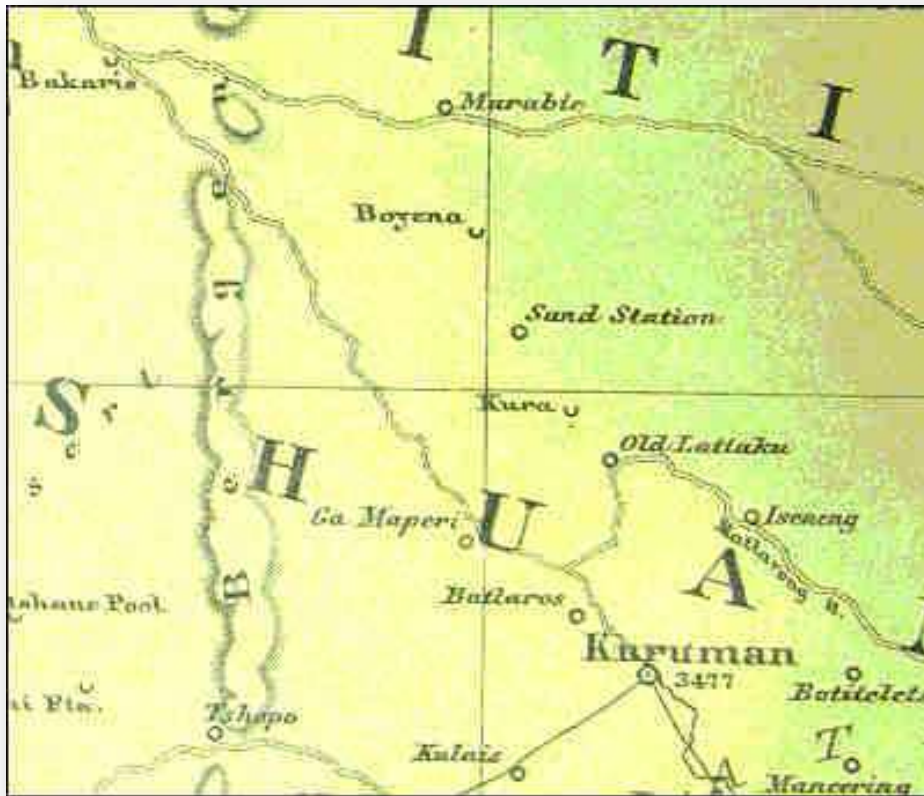


Figure 6 - Map depicting the study area and surrounding region. Note that almost all the towns are situated on or near the main rivers (National Archives, Maps, 3/302).

3.3.2 "Kuruman", Undated

(National Archives, Maps, 3/533)

This map is simply titled "Kuruman", and contains no other information.

An important observation made from this map and which is supported by the other data, is that the proclaimed farms at the time extended only to the vicinity of the Kuruman River, with no proclaimed farms to the west of it. Although settlements are shown to the west of the said river, these are all located on the banks of rivers.

crossing over the vicinity of the study area from Dikgathlong southwards. (National Archives, Maps, 3/533).

3.3.3 *British Bechuanaland Map, 1894*

(National Archives, Maps, 1/441)

“Map of the Surveyed Portion of British Bechuanaland” was compiled by the Surveyor-General’s Office in Vryburg. It is a relatively accurate map and, importantly, indicates the extent to which farms in the area have been proclaimed and demarcated. Note that the entire section in which the study area is located was still unsurveyed at the time with no farm boundaries shown.

No settlement features or human activity centres are shown for the areas in which the farms under discussion are located. Almost all the settlements shown on this map are located on or near the rivers.

3.3.4 *Geological Map, 1925*

(National Archives, Maps, 2/304)

This map was made in 1925, and is titled the *“Geological Map of the Union of South Africa”*. It was produced by the Geological Survey of the Department of Mines and Industries.

No settlement features or human activity centres are shown for the areas in which the farms under discussion are located. Note that all the indicated settlements in the wider region are located adjacent to rivers. These include settlements such as Dikgathlong, Batlaros and Gamopedi. Also note the demarcation of the Lower Kuruman Native Reserve on this map.

3.3.5 *Orange River Sheet 3, 1945*

(National Archives, Maps, 2/1085)

This map is titled *“Orange River Sheet 3”*, and dates from 1945. It was produced by the Union Defence Force (U.D.F.), and although this edition is dated 1945, it appears to have been drawn during 1942. The map provides a general view on the study area and the surrounding region.

No settlement features or human activity centres are shown for the areas in which the farms under discussion are located. Note the way in which the secondary road (thin brown line) follows the rivers. Only the smaller roads (brown stippled line) cross over the waterless areas. Furthermore, three Post Offices are shown, all located on the rivers. Although three mines are indicated, these are all situated closer to Kuruman. No mines are shown for the areas under discussion.

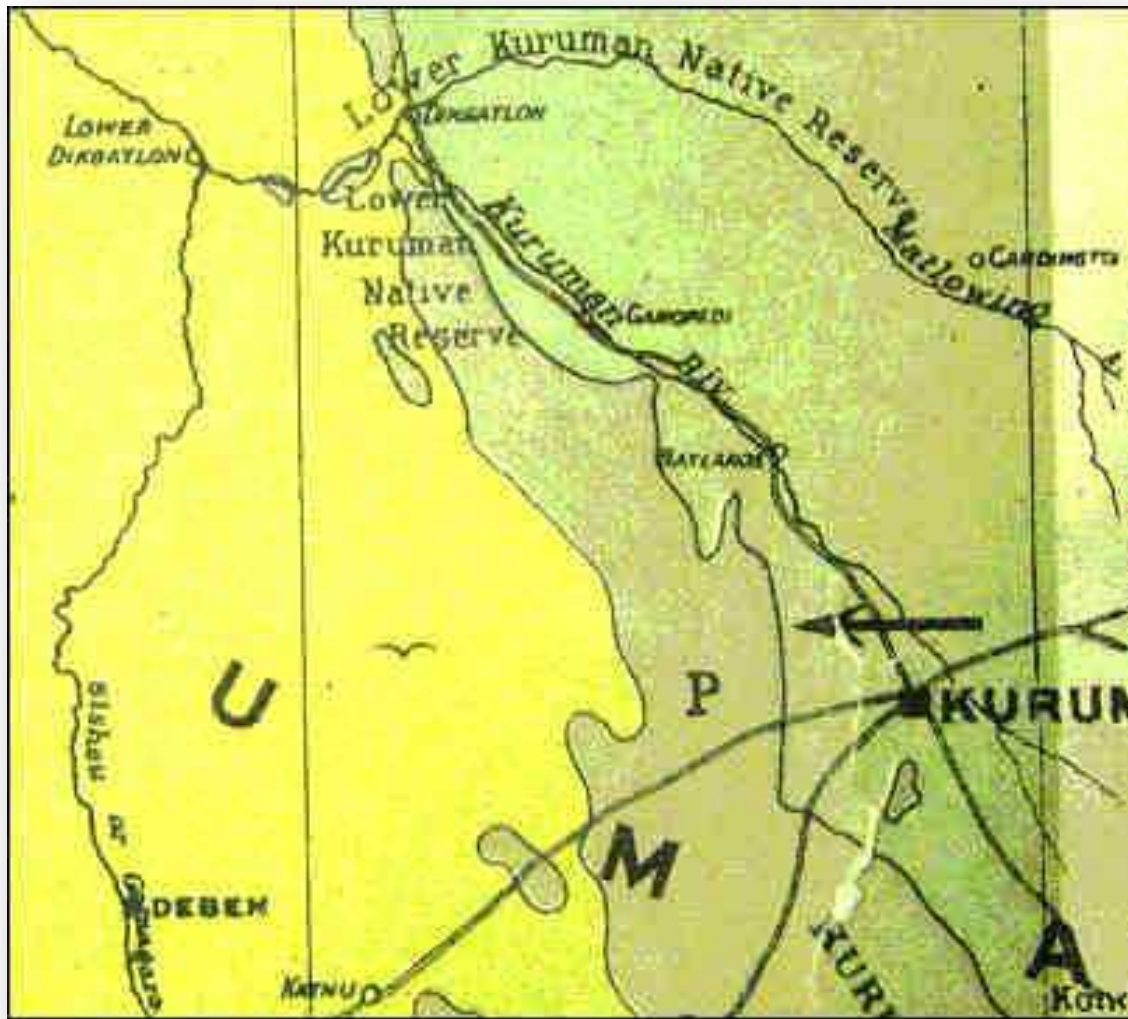


Figure 9 - Geological map of the study area and surrounding region (National Archives, Maps, 2/304).

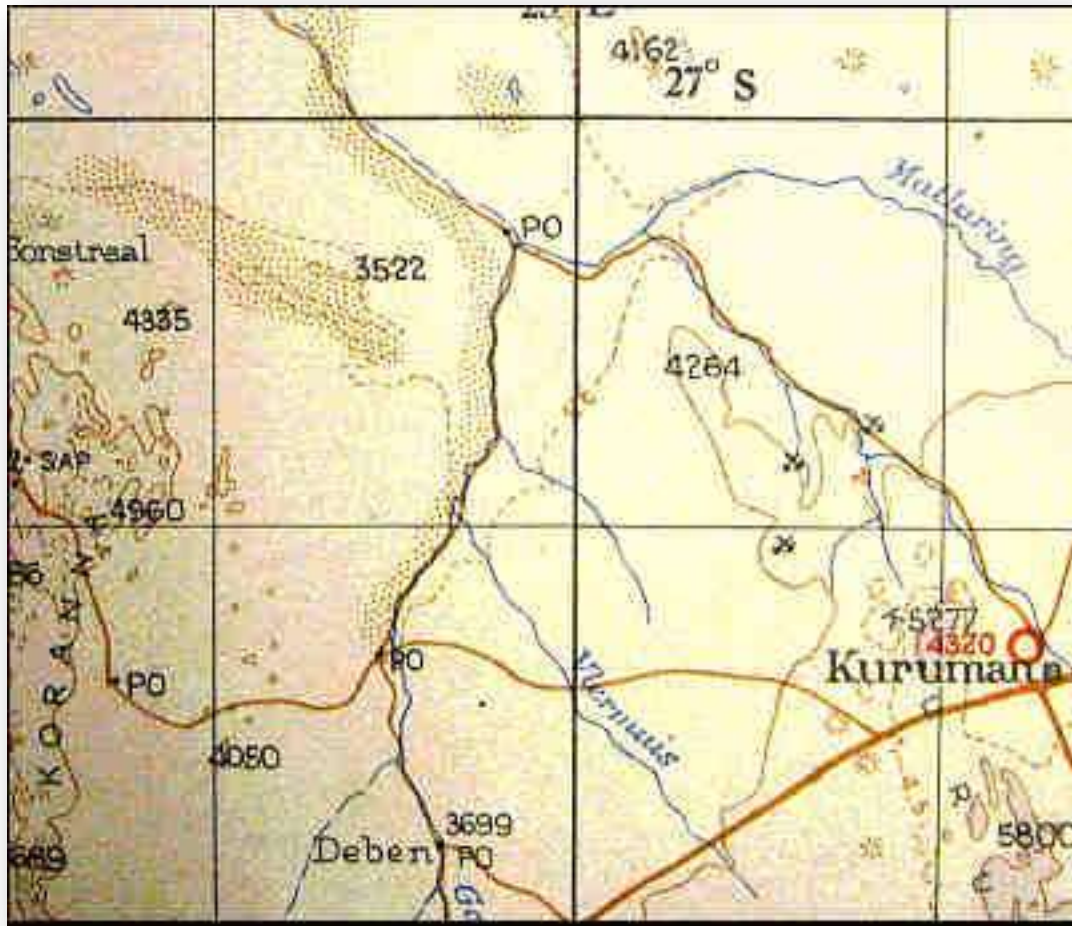


Figure 10 - Map depicting the study area and surrounding region (National Archives, Maps, 2/1085).

3.4 Aspects of the area's history as revealed by the archival/desktop study

3.4.1 Settlement during the Later Stone Age

A number of Stone Age sites are known for the area surrounding Kuruman as well as along the Kuruman River (Humphreys & Thackeray, 1983; Beaumont & Morris, 1990; Parsons, 2003). Some of these sites contain rock engravings as well, such as Nchwaneng and Tsineng (Beaumont & Morris, 1990; Morris, 1988, 2002, 2003).

As the wider landscape became increasingly inhabited, the San were forced to move further west and northwest to remain in the vicinity of wild game (Snyman, 1992).

3.4.2 Early Black Settlement during the Late Iron Age and Historic Period

The Tlharo seems to have been the first Tswana group to enter the Kuruman area. They originated from the Hurutshe group further to the north-east, and after splitting from this group during the end of the 17th century, moved in a southern direction down the Molopo River. Their early settlements included Khuis, Madibeng, Heuningvlei, Langeberg and Tsineng (Snyman, 1992). As mentioned earlier, the town of Tsineng (Tsenin) is located in the general vicinity of the present study area.

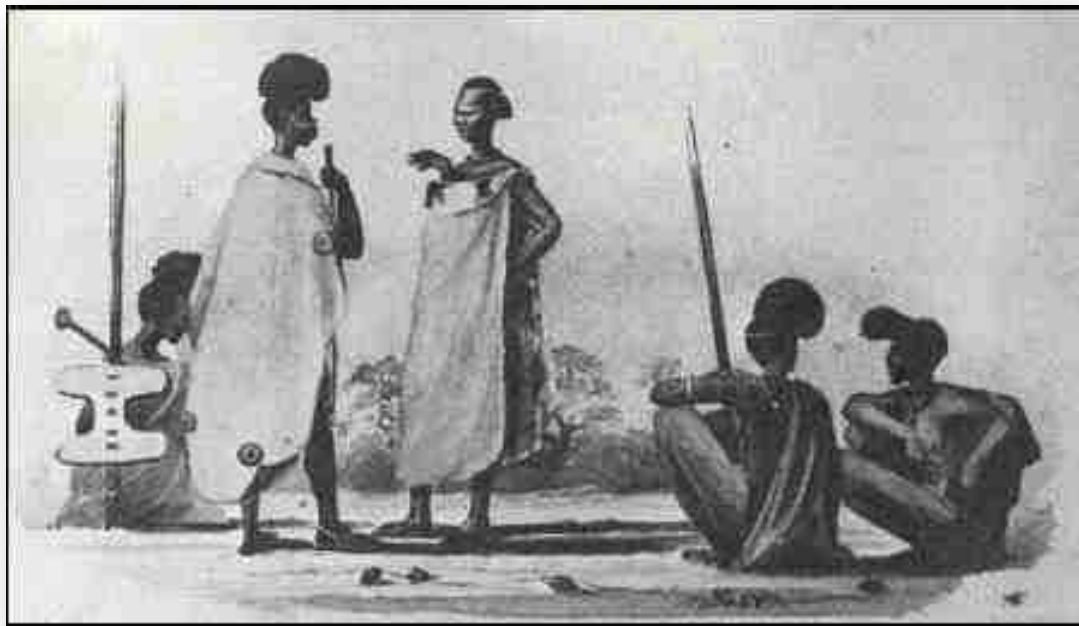


Figure 11 - "Tlharo of the Kalahari Desert" A sketch that appeared in Dr. Andrew Smith's travel journal (Lye, 1975:171).

The second important Tswana group from the wider area is the Tlhaping. They originated from the Rolong group and during the mid-1700s moved southward along the Harts and Vaal Rivers to the vicinity of Campbell, from where they travelled westwards into the area falling between Tsantsabane and Majeng on the edge of the Kalahari Desert. The Tlhaping established a capital on a perennial river known as Nokaneng. Their ruler during this time was King Maswe. Although the exact locality of Nokaneng is not known, one possibility is that the present non-perennial river Ga-Mogara used to be the Nokaneng River. This possibility was supported by the missionary John Campbell, who in 1820 referred to the Ga-Mogara River as the Nokaneng (Campbell, 1922: Vol II:125; Snyman, 1992).

3.4.3 European Explorers and Visitors

Two of the more well-known early European explorers to these areas were Dr. Hinrich Lichtenstein in 1805 and Dr. Andrew Smith during 1835.

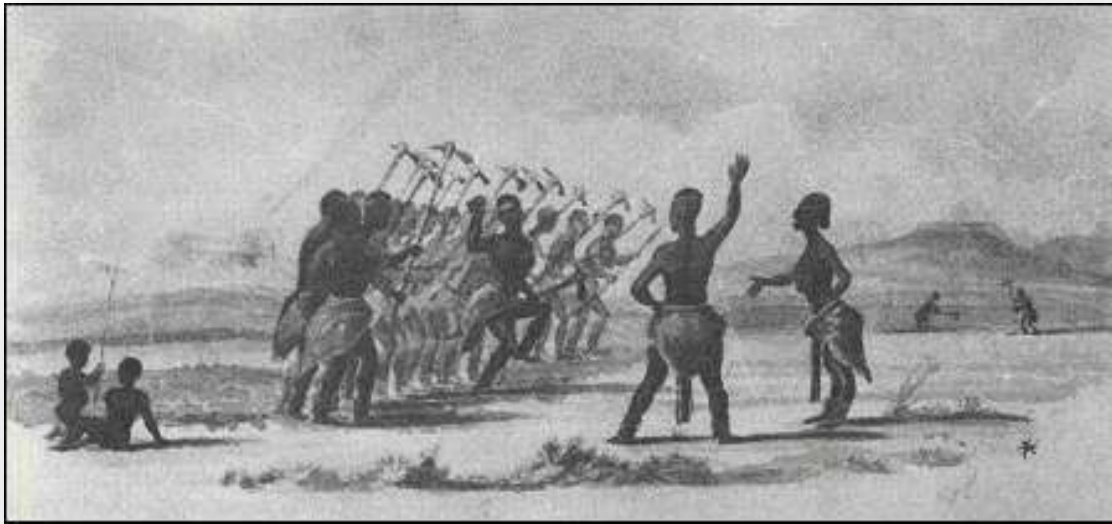


Figure 12 - "Tlhaping women cultivating gardens and singing" One of the sketches appearing in Dr. Andrew Smith's journal (Lye, 1975:171).

3.4.4 The journey of Lichtenstein (1805)

After crossing the Orange River in the vicinity of present-day Prieska, Lichtenstein's party visited present-day Daniëlsskuil, and by June 1805 they were at Blinkklipkop (Postmasburg), a well-known source for obtaining specular haematite. Archaeological investigations at Blinkklipkop (also known as Nauga) established a date of AD 800 for the utilization of this particular rich source (Thackeray, et al 1983; Beaumont & Morris, 1990). From here they travelled further north and reached the Kuruman River where they met Tswana-speaking people. They followed the river downstream for three days, after which they followed a tributary to reach Lattakoe. From here they turned south and reached the Orange River on 11 July 1805.

While on their way to the Kuruman River (and to the south thereof), Lichtenstein and his fellow travellers visited a small settlement consisting of "...about thirty flat spherical huts." Although the people who stayed here were herdsmen who looked after the cattle of richer

people living on the Kuruman River, they indicated that San (Bushmen) were also present in the area.

Lichtenstein's party subsequently travelled further north to visit the capital of King Muliawang located on a plain in the vicinity of the Kuruman River. He described the town as consisting of six hundred houses with 5 000 inhabitants. The individual dwellings were described as follows: "*The houses were all of a circular form, with the roof running up to a point; the roof rests on a circle of poles, which are united together below by thin walls of loam; above, for a little way below the roof, they are left open to admit light and air.*" (Lichtenstein, 1930:373). Lichtenstein also indicated that hedges were used as cattle enclosures.

3.4.5 Andrew Smith's journey (1835)

Dr. Andrew Smith's expedition into the interior of Southern Africa can be seen as one of the highlights of the era of exploration and travel into these regions of Africa. After some travelling, which included a visit to Mosjesj, Smith's party crossed over the Vaal River and after reaching this river's confluence with the Harts, followed it to Boetsap and subsequently reached Kuruman (Bergh, 1999).

Smith met Robert Moffatt at Kuruman, and during this time made a journey all along the Kuruman River to Tsineng from where he travelled south to the Langeberg. Returning to Tsineng, Smith travelled north to Heuningvlei before returning back to Kuruman (Bergh, 1999).

For the aims of the present study, it is especially Smith's journey from Tsineng to the Langeberg and back which is most interesting. The route followed by Smith seems to have been the Ga-Mogara River, and as such his route crossed over portions of the present study area.

In the vicinity of Tsineng Smith found a number of springs which the local people called Malichana. He observed a small group of Tswanas (*Bituanas*) as well as a Griqua family staying near the springs, and indicated that the Tswana group conducted agricultural activities in gardens laid out near the springs.

From Tsineng Smith's party travelled all along the bank of the Kuruman River, presumably to the confluence of the Ga-Mogara River. On this stretch of the journey Smith observed "...a number of almost naked natives in the distance carrying ostrich shells and something resembling leather sacks upon their shoulders..." (Lye, 1975:181). These people were on their way to a water hole, which had been excavated some seven meters deep. Anyone wishing to obtain water had to climb down the hole making use of footholds along the sides.

3.4.6 British Protectorate

On 23 March 1885 Britain declared a Protectorate over Bechuanaland and the Kalahari. On 30 September 1885 the Protectorate was divided into two parts. The area north of the Molopo River remained the Bechuanaland Protectorate and up to 1895 was administered from Vryburg, after which the capital was moved to Mafeking. The area south of the Molopo became the Crown Colony of British Bechuanaland with its capital at Vryburg (Tlou & Campbell, 1997). This area included the present study area as well as Kuruman.

In accordance to Act 31 of 1895 the area south of the Molopo River, namely British Bechuanaland, was included in the Cape Colony. This took place during November 1895 (Smit, 1966).

3.5 Historic Black Settlement

3.5.1 Situation at the beginning of the 19th century

When Reverend Robert Moffatt first arrived in the Kuruman area in 1819 he found the Tlhaping settled at Maropin in the Kuruman Valley under their ruler Mothibi. They subsequently moved upstream to the vicinity of present-day Kuruman.

During the same time Moffatt found the BaTlharo established at Tsening.

In a document written by the Superintendent of Natives on 3 November 1921, it is indicated that before the farms to the west of the Lower Kuruman Native Reserve were surveyed and ceded to different white farmers, the black people of the area "...had the run of the whole country to the Moshewing River on the one side and the Gamagara River on the other..." and grazed their livestock and conducted agricultural activities over these vast tracts of land. In an associated petition document drawn up by the Tlharo people of Batlaros, they indicated

that their agricultural lands and cattle posts used to stretch in a westward direction all the way to the “*Dibeng*” River, which appears to be the present-day Ga-Mogara River (NTS, 7752, 22/335).

3.5.2 Lower Kuruman Native Reserve

On 4 May 1895 the Lower Kuruman Native Reserves well as a number of other so-called native reserves were established by virtue of Bechuanaland Proclamation No. 220 of 1895. These reserves were demarcated as part of a commission which investigated land claims and land settlement in British Bechuanaland. A subsequent report titled “*Report of the Commissioners appointed to determine land claims and to the effect of a land settlement in British Bechuanaland*” and published in 1896, contained all the findings of the commission (Breutz, 1963).

At the time of its establishment, the Lower Kuruman Native Reserve had a population of 5425, and being 225 square miles in extent, had a population density of 26.5 acres per individual. With time, the population density increased. Livestock numbers also increased drastically. As a result of these pressures the size of the reserve was subsequently extended.

During negotiations and discussions on such an expansion of the reserve, it was indicated that a number of black people were residing outside the boundaries of the reserve. In a police report dated 22 January 1908 a list is provided of all the people, white and black, residing “*...on the banks of the Kuruman River north of the surveyed farms in the Sishen Valley.*” This document provides an indication of human habitation in the direct vicinity of the study area during the early 1900s. One interesting observation to be made from the document is that some of the persons who acted as borehole watchmen were black. For example, Hans Gaboerkwe had been living at Dibiachomo since 1899 and was tasked with keeping the well open (NTS, 7752, 22/335).

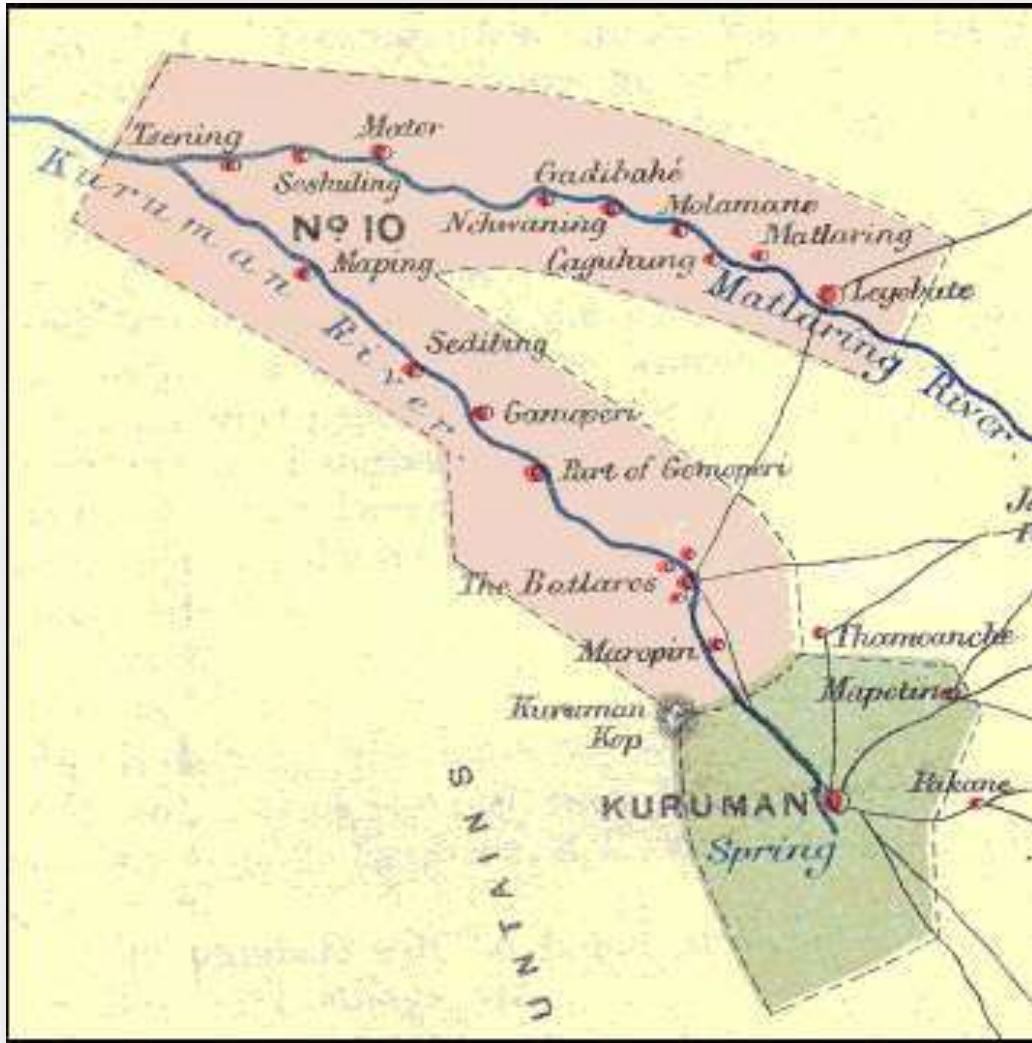


Figure 13 - Map showing the original demarcation of the Lower Kuruman Native Reserve.

3.5.3 The Langeberg Rebellion

During 1897 conflict broke out between the authorities and a Thlaping leader from Taung, Galeshewe. The conflict arose after some of Galeshewe's cattle that were infected by Rinderpest had to be destroyed. After killing an officer, Galishewe fled to the Thlaro leader, Toto, of the Langeberg. Subsequently, a full-scale rebellion broke out that was eventually suppressed (Breutz, 1963).



Figure 14 – Photograph of Galeshewe (National Archives, TAB, 36277).

Although most of the activities associated with the rebellion took place away from the study area and surrounding region, it is evident from the historical records documenting the rebellion that some activities did take place in the vicinity. On 13 June 1897, for example, a battle took place between Inspector Berrangé's Cape Police and a large force under Galishewe at Tsineng (Dalgerty, 1898).

Another incident which took place in the area was the killing of J.P. and Edward Drotskie in the vicinity of Boeredraai (Snyman, 1992). It can be expected that the movement of military units must have taken place a number of times in the area as well. From the British records, for example, it is known that military patrols traversed the area between Kuruman and Tsineng, as well as along the Ga-Mogara river. Furthermore, on 20 June 1897 a large force of "rebel reinforcements" were observed between Upper and Lower Dikgathlong on their way to the Langeberg.

3.6 Settlement of White Farmers

Background information on the settlement of white farmers in the area

According to Smit (1966) the farm Boerdraai 228, which is 22 kilometres to the north of the study area, was always seen as situated on the edge of the real desert.

Although some white farmers did travel down the Kuruman River to settle in the vicinity of Boeredraai during the latter part of the 19th century, by 1897 most of them had moved away again.

The first white people to settle on a permanent basis in the area were the Le Roux family who established themselves at Dikgathlon. More families followed and subsequently also settled in the area. During a period of great drought between 1907 and 1908 many farmers of the then Cape Colony moved into these areas along the edge of the Kalahari Desert in search of better grazing for their cattle (Smit, 1966).

When the First World War (1914-1918) broke out, and the South African Union Government decided to attack German South West Africa, the Union troops needed water to sustain them along the way. As a result a number of boreholes were dug all along the banks of the Kuruman River. These boreholes were drilled at places such as Eensaam, Kameelrus, Murray, Springputs and Van Zylsrus (Smit, 1966; Van der Merwe, 1949).

After the war, farmers established themselves at these localities as borehole watchmen, and in exchange for these duties were allowed free grazing rights on the surrounding land. Subsequently, even more boreholes were sunk by the Department of Lands (Smit, 1966; Van der Merwe, 1949).

Since the formulation of the Land Settlement Act No. 12 of 1912 as amended by Act No. 23 of 1917, numerous farms in the vicinity of the study area had been allocated to white farmers. By 1921 almost all of the land surrounding the *Lower Kuruman Native Reserve* had become occupied.

At the end of the First World War the Department of Lands started distributing the farms on application under very lenient conditions. Many of the people who was already established as borehole watchmen and tenants were given first choice to apply for the farms on which they were residing (Smit, 1966).

Schedule of persons living on banks of the Kuruman River north of surveyed farms in Sishen Valley.

Name of spot	Name of occupier	Nationality	Resident since what date	Authority
Gasee	F. von Krautenberg	E	Sept. 1907	Grazing licence
"	J. Thomas	E	Sept. 1907	"
"	J. Drotaki	E	March 1904	"
Ruchea	E.L. Drotaki	E	1898	"
Upper Dilgation	Z.P. le Roux	E	March 1905	"
"	J. le Roux	E	Aug. 1906	"
"	D. Korsens	E	Aug. 1907	"
"	P. Jacobs	E	Dec. 1907	In charge of Z.P. le Roux's stock, Z.P. le Roux (Grazing licence) absent temporarily
"	40 Natives		1894	Occupying 10 huts. Pay hut tax.
Dibeakgomo	Hans Gabeerlwe	N	1899	Permission to live there to keep wells open.
Boerdraai	Hans Goliath	N	May 1900	
Mmphepha	Poleal and 59 others	N	1894	Permission to live there to keep water open
Lower Dilgation (Latihakane)	Katyan and 69 others	N	1894	Permission to reside there pending the surveying of a Native Reserve. Pay hut tax.
Matlapaning	30 persons	N		Squat there during rainy season, 3 to 4 months in each year. Pay hut tax.

Figure 15 - Police document listing all the people who resided on the banks of the Kuruman River at the time of an inspection in 1908. The names of a number of the early white pioneers in the area are also listed here.

Many farms were distributed during this time, so much so that by 1929 all the farms up to Vanzylsrust were already handed out (Smit, 1966).

3.6.1 Farm Surveys

During the 1910s a full scale survey of large portions of the region was undertaken by Dirk Roos and Hendrik Wessels. While Wessels was concerned with surveying the farms from Dingle and Sishen up to Cobham and Shirley, Dirk Roos was responsible for the surveying of the farms from Mamatwan in the south to areas further north of the Kuruman River (Samangan, 1977).

Many stories are told about these two pioneering characters. As they were allowed to name the farms they surveyed, most of the farms names appearing on maps of the area were created by them. The farm Wessels, for example, was named by Dirk Roos in honour of his colleague Hendrik Wessels. Mamatwan, another farm forming part of this study, was derived from the Tswana name for a bat.

One of the more well-known stories relates to the naming of the farm Hotazel. Dirk Roos was assisted at the time by Veldcornet J.U. Waldeck. One evening, after a long day's work in the hot Kalahari sun Roos sat down at the camp and remarked: *"What about a name for the farm? Phew! What a day! What a place! Hot as hell."* Waldeck replied with the words *"That's it. The perfect name for it – hot as hell"* (Samangan, 1977:19 & 20). The wording was slightly changed to *"Hotazel"* and this version was used as the farm name on the survey diagram.

FARM NAME	DATE
Hotazel 280	1914
Middelplaats 730	1929
York 279	1914

3.7 Possible heritage sites

As mentioned elsewhere, a number of old houses are shown on the old survey diagrams for the farms Wessels and Middelplaats. These houses represent some of the earliest white settlement in the area and as such are of historic significance. Any remaining houses should therefore be documented and mitigated (refer to Kusel, 2009 and Matakoma, 2005).



Figure 16 - Historic photograph of an early farmer's dwelling along the Kuruman River (Van der Merwe, 1949).

It should also be noted that many of the archival maps show an old road following the Ga-Mogara River. This road seems to at least have existed during the 1890s. It is possible that the old road transects some of the properties included in this study.

3.8 Conclusions

This archival study has revealed important aspects about the history of the area. Certainly some of the key aspects emanating from this study are firstly, the relative low human presence for the dry regions surrounding the study area and, secondly, a tendency for human settlements in these areas to be located on or near the water courses.

3.8.1 Findings of the archival research Document

The findings can be compiled as follow and have been combined to produce a heritage sensitivity map for the project:

Archaeology

Previous studies conducted in the larger Hotazel and Black Rock areas (Refer to Section 3.1.) have shown that the archaeological record is temporally confined to the Middle and Later Stone Age, while spatially distribution of such sites are concentrated around the riverine edges due to the harsh climate of the area.

Impacts on archaeological site can be expected if areas closer to the low lying riverine areas are to be disturbed during mining.

Kusel (2009) recommended a 100m buffer from the river centre line where archaeological monitoring will be required if any development should take place.

Historical

The archival research has shown that the area was settled as early as the late 1700's with activity and settlements increasing into the mid-1800's with the establishment of the Lower Kuruman Native Reserve with its northern most limits less than 15 kilometres to the south of the study area. Furthermore, the settlement of white farmers from around 1897 to the early 1920 on the Kuruman River at places with names such as Boerdraai (17 km north of the study area), Wessels (1917), Dibiaghomo (1914, but already settled by 1899) and Dikgathlong (as early as 1894), is an indication that farmsteads and structures of significance can be present in the study area.

Analysis of maps and satellite imagery enabled the development of a heritage sensitivity map (**Figure 17**) that was used during the field work to assist in identifying and assessing heritage resources in the landscape. With reference to **Figure 17**, these sensitive areas include drainage and riverine areas as most archaeological material in the Northern Cape is found near water sources such as rivers, pans and springs (Section 3.3).

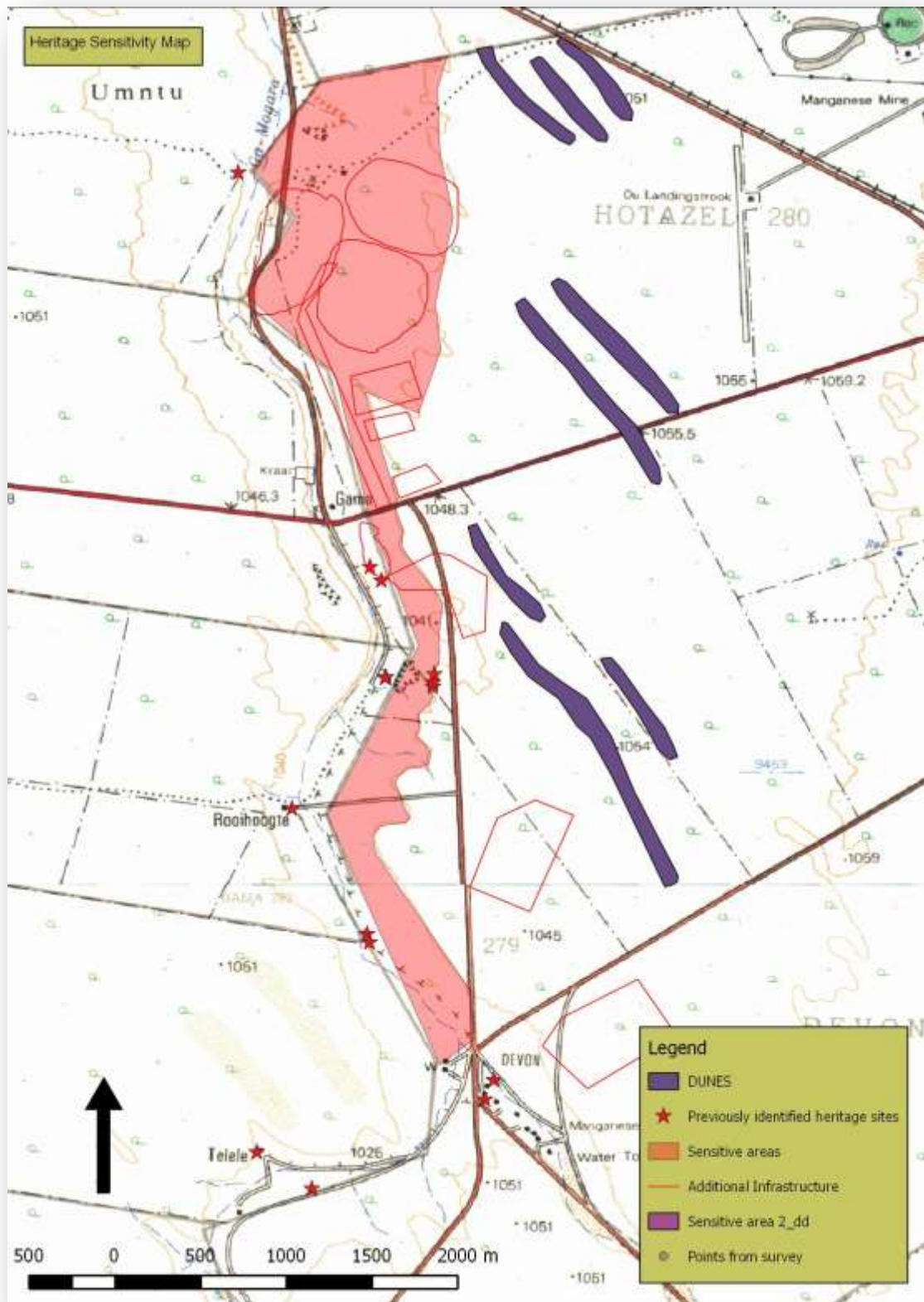


Figure 17 – Heritage Sensitivity Map (based on satellite imagery and topographical maps)

4 IMPACT ASSESSMENT

The impact assessment rating is based on the rating scale as contained in **Appendix D and E**.

4.1 Field work Methodology

The field work was conducted by an archaeologist of PGS through controlled exclusive survey of the proposed new infrastructure foot print areas. Tracklogs of the fieldwork was logged and is depicted in **Figure 18**. All structure identified were logged with handheld GPS and documented with digital camera.

During the field work, one archaeological site was identified. The position of this site is illustrated in **Figure 19**. Further information regarding the identified archaeological site is provided below.

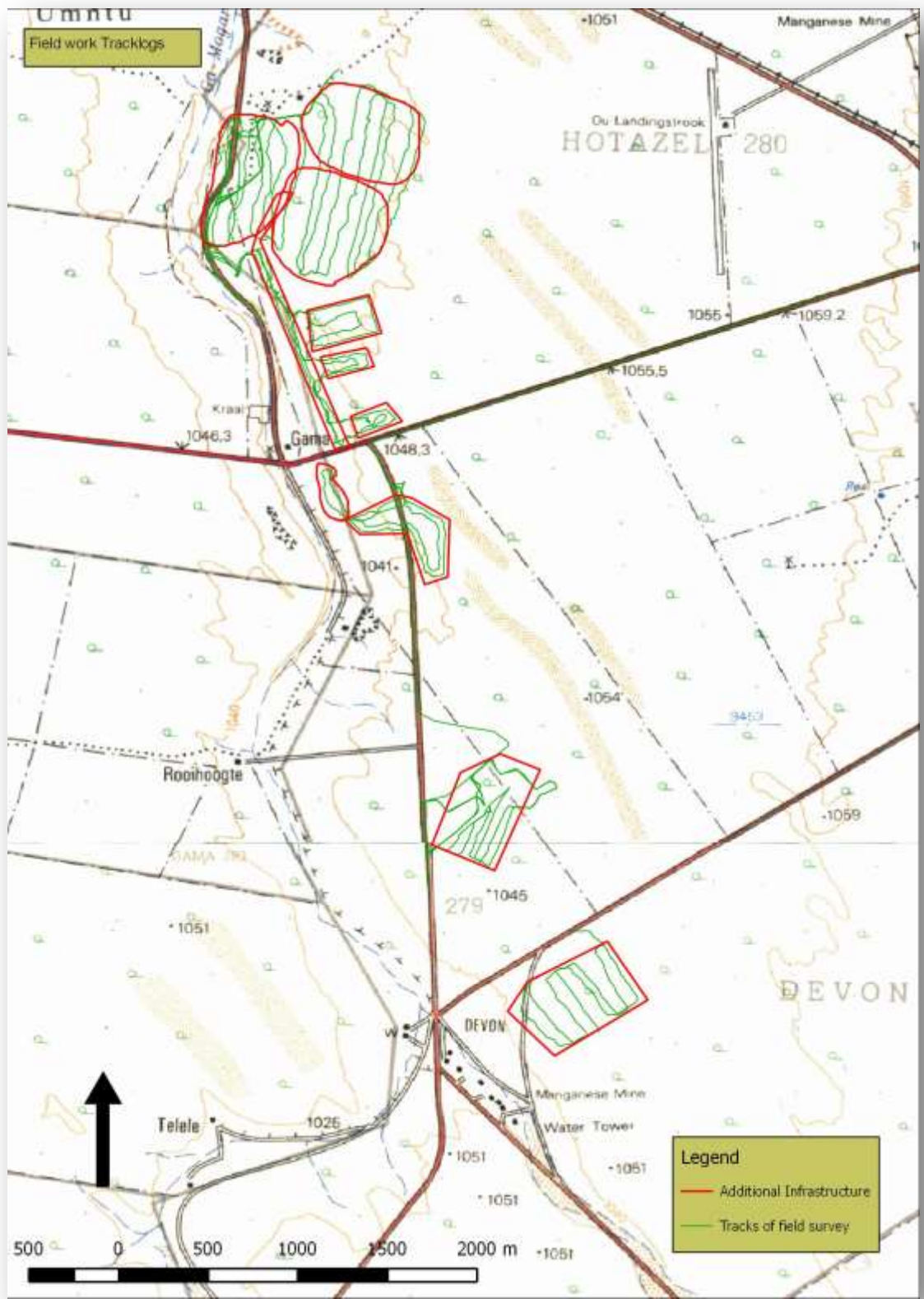


Figure 18 – Map with track logged survey including the identified heritage sites

4.1.1 Archaeological Site – KU001

GPS Coordinates: S27.22051 E22.92344

A low density scatter of stone tools was identified at this location (\pm 2-5 artefacts in 10m x10m). The site is situated on the eastern banks of the Ga-Mogara River (**Figure 19**). The site is situated approximately 100m from the river and is situated on the sloping banks of the river. The river bank is characterised by a mix of exposed calcretes/pebble layers as well as inter-dispersed Hutton sand dunes spilling over in to the Ga-Mogara flood plains. The site extended approximately 250m along the river and covers an area of approximately 50m wide along the down slope towards the river.

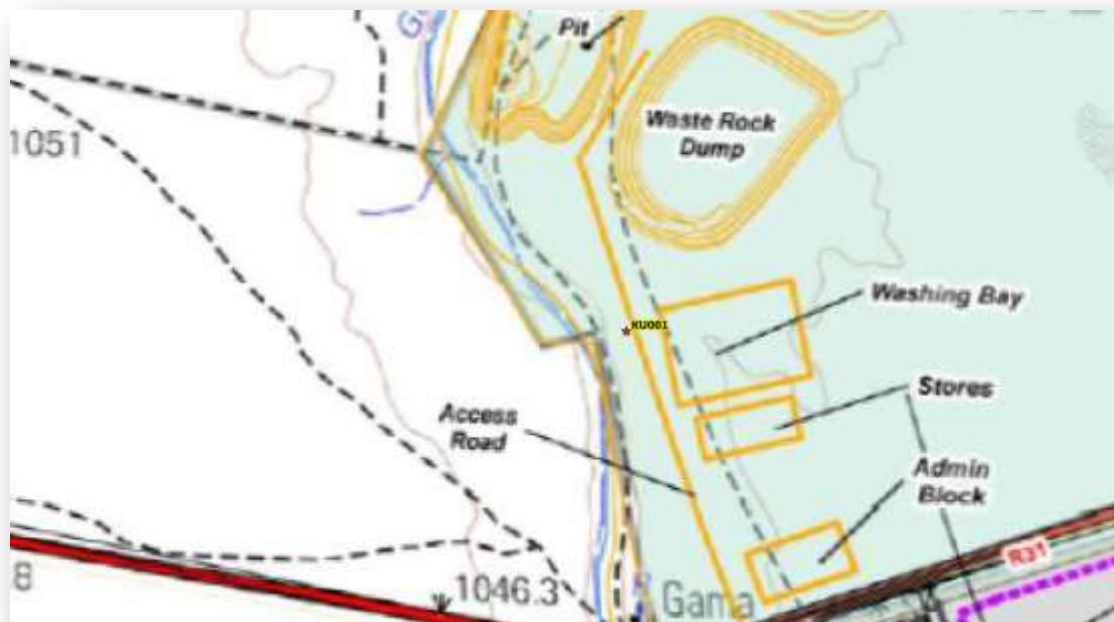


Figure 19 – Position of Site KU001 in relation to the proposed infrastructure

The stone tools consisted mostly of MSA and LSA lithics manufactured from jasper and a small number of lithics knapped from cryptocrystalline silica rock (ccs) – consistent with previous studies (Matakoma, 2005; Kusel, 2008; PGS 2009, 2012, 2013).

In accordance to the classification standards as prescribed by SAHRA (**Appendix D**), the evaluation of the density of the lithics scatter and its extent gives the site low heritage significance and it is graded as **Generally Protected (Grade 4B)**. This classification is based

on the current research conducted in the area. This may change with the discovery of in situ material and in context with other stratified cultural material.



Figure 20 – View of site (KU001)



Figure 21 – MSA Lithics found on site KU0011)

Impact Evaluation:

The impact rating provided below is based on the methodology described in **Appendix D**.

The impact rating below assumes that no mitigation measures have been implemented.

IMPACT	SEVERITY	SPATIAL SCALE	DURATION	CONSEQUENCE	PROBABILITY	SIGNIFICANCE
Destruction of archaeological site	Moderate	Low	High	Medium	Medium	Medium

The impact significance is rated as medium, as it may be possible that the site can be impacted by mining activity if not demarcated. Heritage Resources are non-renewable, and an impact on such a site can lead to permanent destruction of the site.

Mitigation:

- During site clearing a qualified archaeologist must monitor the site clearing and topsoil stripping within 150m of the river center line.
- If at any stage the site is disturbed a qualified archaeologist must be contracted to evaluate the damage and make recommendations on the appropriate mitigation measures.

5 HERITAGE MANAGEMENT GUIDELINES

5.1 General Management Guidelines

1. The National Heritage Resources Act (Act 25 of 1999) states that, any person who intends to undertake a development categorised as-
 - (a) the construction of a road, wall, transmission line, pipeline, canal or other similar form of linear development or barrier exceeding 300m in length;
 - (b) the construction of a bridge or similar structure exceeding 50m in length;
 - (c) any development or other activity which will change the character of a site-
 - (i) exceeding 5 000 m² in extent; or
 - (ii) involving three or more existing erven or subdivisions thereof; or
 - (iii) involving three or more erven or divisions thereof which have been consolidated within the past five years; or
 - (iv) the costs of which will exceed a sum set in terms of regulations by SAHRA.SAHRA;

- (d) the re-zoning of a site exceeding 10 000 m² in extent; or
- (e) any other category of development provided for in regulations by SAHRA or a provincial heritage resources authority, must at the very earliest stages of initiating such a development, notify the responsible heritage resources authority and furnish it with details regarding the location, nature and extent of the proposed development.

In the event that an area previously not included in an archaeological or cultural resources survey is to be disturbed, the SAHRA needs to be contacted. An enquiry must be lodged with them into the necessity for a Heritage Impact Assessment.

- 2. If a further heritage assessment is required it is advisable to utilise a qualified heritage practitioner, preferably registered with the Cultural Resources Management Section (CRM) of the Association of Southern African Professional Archaeologists (ASAPA) and or the Association of Professional Heritage Practitioners (APHP).

This survey and evaluation must include:

- (a) The identification and mapping of all heritage resources in the area affected;
- (b) An assessment of the significance of such resources in terms of the heritage assessment criteria set out in section 6 (2) or prescribed under section 7 of the National Heritage Resources Act;
- (c) An assessment of the impact of the development on such heritage resources;
- (d) An evaluation of the impact of the development on heritage resources relative to the sustainable social and economic benefits to be derived from the development;
- (e) The results of consultation with communities affected by the proposed development and other interested parties regarding the impact of the development on heritage resources;
- (f) If heritage resources will be adversely affected by the proposed development, the consideration of alternatives; and
- (g) Plans for mitigation of any adverse effects during and after the completion of the proposed development.

3. It is advisable that an information section on cultural resources be included in the **SHEQ training** given to contractors involved in surface earthmoving activities. These sections must include basic information on:
 - a) Heritage;
 - b) Graves;
 - c) Palaeontology;
 - d) Archaeological finds; and
 - e) Historical Structures.

This module must be tailor made to include all possible finds that could be expected in that area of construction.

4. In the event that a possible find is discovered during construction, all activities must be halted in the area of the discovery and a qualified archaeologist contacted.
5. The archaeologist needs to evaluate the finds on site and make recommendations towards possible mitigation measures.
6. If mitigation is necessary, an application for a rescue permit must be lodged with SAHRA.
7. After mitigation, an application must be lodged with SAHRA for a destruction permit. This application must be supported by the mitigation report generated during the rescue excavation. Only after the permit is issued may such a site be destroyed.
8. If during the initial survey sites of cultural significance are discovered, it will be necessary to develop a management plan for the preservation, documentation or destruction of such a site. Such a program must include an archaeological/palaeontological monitoring programme, timeframe and agreed upon schedule of actions between the company and the archaeologist.
9. In the event that human remains are uncovered, or previously unknown graves are discovered, a qualified archaeologist needs to be contacted and an evaluation of the finds made.
10. If the remains are to be exhumed and relocated, the relocation procedures as accepted by SAHRA need to be followed. This includes an extensive social consultation process.

The purpose of an archaeological/palaeontological monitoring programme¹ is:

¹ The definition of an archaeological/palaeontological monitoring programme is a formal program of observation and investigation conducted during any operation carried out for non-archaeological reasons. This will be within

- To allow, within the resources available, the preservation by recording of archaeological/palaeontological deposits, the presence and nature of which could not be established (or established with sufficient accuracy) in advance of development or other potentially disruptive works
- To provide an opportunity, if needed, for the watching archaeologist to signal to all interested parties, before the destruction of the material in question, that an archaeological/palaeontological find has been made for which the resources allocated to the watching brief itself are not sufficient to support treatment to a satisfactory and proper standard.
- A monitoring programme is not intended to reduce the requirement for excavation or preservation of known or inferred deposits, and it is intended to guide, not replace, any requirement for contingent excavation or preservation of possible deposits.
- The objective of the monitoring programme is to establish and make available information about the archaeological resource existing on a site.

PGS can be contacted on the way forward in this regard.

Table 1: Roles and responsibilities of archaeological and heritage management

ROLE	RESPONSIBILITY	IMPLEMENTATION
A responsible specialist needs to be allocated and should attend all relevant meetings, especially when changes in design are discussed, and liaise with SAHRA.	The client	Archaeologist and a competent archaeology support team
If chance finds and/or graves or burial grounds are identified during construction or operational phases, a specialist must be contacted in due course for evaluation.	The client	Archaeologist and a competent archaeology support team
Comply with defined national and local cultural heritage regulations on management plans for identified sites.	The client	Environmental Consultancy and the Archaeologist
Consult the managers, local communities and other	The client	Environmental Consultancy and

a specified area or site on land, in the inter-tidal zone or underwater, where there is a possibility that archaeological deposits may be disturbed or destroyed. The programme will result in the preparation of a report and ordered archive.

key stakeholders on mitigation of archaeological sites.		the Archaeologist
---	--	-------------------

ROLE	RESPONSIBILITY	IMPLEMENTATION
Implement additional programs, as appropriate, to promote the safeguarding of our cultural heritage. (i.e. integrate the archaeological components into the employee induction course).	The client	Environmental Consultancy and the Archaeologist,
If required, conservation or relocation of burial grounds and/or graves according to the applicable regulations and legislation.	The client	Archaeologist, and/or competent authority for relocation services
Ensure that recommendations made in the Heritage Report are adhered to.	The client	The client
Provision of services and activities related to the management and monitoring of significant archaeological sites.	The client	Environmental Consultancy and the Archaeologist
After the specialist/archaeologist has been appointed, comprehensive feedback reports should be submitted to relevant authorities during each phase of development.	Client and Archaeologist	Archaeologist

5.2 All phases of the project

5.2.1 Archaeology

Based on the findings of the HIA, all stakeholders and key personnel should undergo an archaeological induction course during this phase. Induction courses generally form part of the employees' overall training and the archaeological component can easily be integrated into these training sessions. Two courses should be organised – one aimed more at managers and supervisors, highlighting the value of this exercise and the appropriate communication channels that should be followed after chance finds, and the second targeting the actual workers and getting them to recognize artefacts, features and significant sites. This course should be reinforced by posters reminding operators of the possibility of finding archaeological/palaeontological sites. **This needs to be supervised by a qualified archaeologist.**

The project will encompass a range of activities during the construction phase, including ground clearance, establishment of construction camps area and small scale infrastructure development associated with the project/operations.

It is possible that cultural material will be exposed during operations and may be recoverable, but this is the high-cost front of the operation, and so any delays should be minimised. Development surrounding infrastructure and construction of facilities results in significant disturbance, but construction trenches do offer a window into the past and it thus may be possible to rescue some of the data and materials. It is also possible that substantial alterations will be implemented during this phase of the project and these must be catered for. Temporary infrastructure is often changed or added to during the subsequent history of the project. In general these are low impact developments as they are superficial, resulting in little alteration of the land surface, but still need to be catered for.

During the construction/operational phase, it is important to recognise any significant material being unearthed, and to make the correct judgment on which actions should be taken. A responsible archaeologist must be appointed for this commission. This person does not have to be a permanent employee, but needs to attend relevant meetings, for example when changes in design are discussed, and notify SAHRA of these changes. The archaeologist would inspect the site and any development on a recurrent basis, with more frequent visits to the actual workforce and operational areas.

In addition, feedback reports can be submitted by the archaeologist to the client and SAHRA to ensure effective monitoring. This archaeological monitoring and feedback strategy should be incorporated into the Environmental Management Plan (EMP) of the project. Should an archaeological site or cultural material be discovered during construction (or operation), such as burials or grave sites, the project needs to be able to call on a qualified expert to make a decision on what is required and if it is necessary to carry out emergency recovery.

SAHRA would need to be informed and may give advice on procedure. The developers therefore should have some sort of contingency plan so that operations could move elsewhere temporarily while the material and data are recovered. The project thus needs to have an archaeologist available to do such work.

5.2.2 Procedure

In the case where archaeological finds are identified during construction the following measures must be taken:

- Upon the accidental discovery of archaeological finds, a buffer of at least 20 meters should be implemented.
- If archaeological finds are accidentally discovered during construction, activities must cease in the area and a qualified archaeologist be contacted to evaluate the find.
- If the evaluation of the finds require further documentation and mitigation such as excavations, surface collections and/or in situ documentation, a permit must be applied from SAHRA.
- This documentation and mitigation must conform to the guidelines and requirements of SAHRA and international accepted standards

5.2.3 Procedure for discovery of human remains / graves

In the case where a grave is identified during construction the following measures must be taken:

- Upon the accidental discovery of graves, a buffer of at least 20 meters should be implemented.
- If graves are accidentally discovered during construction, activities must cease in the area and a qualified archaeologist be contacted to evaluate the find. To remove the remains a permit must be applied for from SAHRA and other relevant authorities. The local South African Police Services must immediately be notified of the find.
- Where it is recommended that the graves be relocated, a full grave relocation process that includes comprehensive social consultation must be followed.

The grave relocation process must include:

- i. A detailed social consultation process, that will trace the next-of-kin and obtain their consent for the relocation of the graves, that will be at least 60 days in length;
- ii. Site notices indicating the intent of the relocation;
- iii. Newspaper notices indicating the intent of the relocation;
- iv. A permit from the local authority;
- v. A permit from the Provincial Department of Health;

- vi. A permit from the South African Heritage Resources Agency, if the graves are older than 60 years or unidentified and thus presumed older than 60 years;
- vii. An exhumation process that keeps the dignity of the remains intact;
- viii. The whole process must be done by a reputable company that is well versed in relocations;
- ix. The exhumation process must be conducted in such a manner as to safeguard the legal rights of the families as well as that of the developing company.

6 CONCLUSIONS AND RECOMMENDATIONS

Heritage resources are unique and non-renewable and as such any impact on such resources must be seen as significant. This report focus expressly on the new proposed infrastructure, other management measures as listed and required in other HIA's conducted in the area must still be implemented for other heritage features identified in the larger mining area.

Archaeology

Previous studies conducted in the larger Hotazel and Black Rock areas has shown that the archaeological record is temporally confined to the Middle and Later Stone Age, while spatially distribution of such sites is concentrated around the riverine edges due to the harsh climate of the area.

Field work has confirmed this and of the one archaeological site associated with the MSA were identified in the study area.

Mitigation

- During site clearing a qualified archaeologist must monitor the site clearing and topsoil stripping within 150m of the river center line.
- If at any stage the site is disturbed a qualified archaeologist must be contracted to evaluate the damage and make recommendations on the appropriate mitigation measures.

Historical

The archival research has shown that the area was settled as early as the late 1700's with activity and settlements increasing into the mid-1800's with the establishment of the Lower Kuruman Native Reserve with its northern most limits less than 15 kilometres to the south of the study area. Furthermore, the settlement of white farmers from around 1897 to the

early 1920 on the Kuruman River at places with names such as Boerdraai (just north of the study area), Wessels 227 (1917), Dibiaghomo 226 (1914, but already settled by 1899) and Dikgathlong 268 (as early as 1894), is an indication that farmsteads and structures of significance can be present in the study area.

No historical structures or cemeteries were identified during the field work.

General

Further to these recommendations the general Heritage Management Guidelines in Section 5, need to be incorporated into the EMP for the project.

The overall impact of the development on heritage resources is seen as acceptably low and impacts can be mitigated to acceptable levels.

7 REFERENCES

ARBOUSSET, T. & DAUMAS, F. 1968. *Narrative of an exploratory tour to the Cape of Good Hope*. Facsimile reprint. Cape Town: Struik.

BEAUMONT, P. & MORRIS, D. 1990. *Guide to archaeological sites in the northern Cape*. Kimberley: McGregor Museum.

BERGH, J.S., 1999: *Geskiedenisatlas van Suid-Afrika: Die vier noordelike provinsies*. J.L. van Schaik Uitgewers, Pretoria.

BREUTZ, P.L., 1963: *The Tribes of the Districts of Kuruman and Postmasburg*. Department of Bantu Administration and Development, Pretoria.

BROOKS, A.S. 1984. San land-use patterns, past and present: implications for southern African prehistory. In Hall, M., Avery, G., Avery, D.M., Wilson, M.L. & Humphreys, A.J.B. (eds) *Frontiers: Southern African Archaeology Today*. Oxford: BAR International Series 207, pp 40-52.

BURCHELL, W.1967 [1822-24]. *Travels in the interior of southern Africa*. Vol 2. Cape Town: Struik.

CAMPBELL, J. 1822. *Travels in South Africa*. Volume I and II. London: Francis Westley. Facsimile reprint 2004. Elibron Classics Series.

DALGERTY, E.H., 1898: *Bechuanaland Rebellion 1897*. W.A. Richards & Sons, Cape Town.

FOURIE, W. (2008). Archaeological Impact Assessments within South African Legislation. *South African Archaeological Bulletin*, 63(187), 77-85.

HUMPHREYS, A.J.B. & THACKERAY, A.I. 1983. *Ghaap and Gariep: Later Stone Age studies in the northern Cape*. South African Archaeological Society Monograph Series 2. Cape Town.

KIBERD, PHILLIP. 2001. Bundu Farm. A Middle and Later Stone Age Pan Site, Northern Cape, South Africa. Preliminary results of fieldwork 1998- 2000. *Nyame Akuma*, No 55, June 2001

KLEIN, R.G. 1984. *Southern African Prehistory and Paleoenvironments*. A.A. Balkema.

LICHTENSTEIN, H., 1815: *Travels in Southern Africa*. British and Foreign Public Library, London.

LYE, W.F., 1975: *Andrew Smith's Journal of his expedition into the interior of South Africa / 1834-36*. A.A. Balkema, Cape Town.

MATAKOMA HERITAGE CONSULTANTS. 2006. Kalahari Manganese Mines, Heritage Assessment, on Umtu 281, Olive Pan 282, Gama 283

MORRIS, D. 1988. Engraved in place and time: a review of variability in the rock art of the Northern Cape and Karoo. *South African Archaeological Bulletin* 43:109-121.

MORRIS, D. 2002. Driekopseiland and 'the rain's magic power': history and landscape in a new interpretation of a Northern Cape rock engraving site. Unpublished Masters dissertation, University of the Western Cape, Cape Town.

MORRIS, D. 2003. Rock art as source and resource: research and responsibility towards education, heritage and tourism. *South African Historical Journal* 49:193-206.

MORRIS, D. 2008. Archaeological and Heritage Phase 1, Impact Assessment for proposed upgrading of Sishen Mine Diesel Depot Storage Capacity at Kathu, Northern Cape. Kimberley: McGregor Museum.

PARSONS, I. 2003. Lithic expressions of Later Stone Age lifeways in the Northern Cape. *South African Archaeological Bulletin* 58:33-37.

PGS HERITAGE. (2009). Heritage Impact Assessment for Ntsimbintle Mining (Pty) Ltd on Portions 1, 2, 3 and 8 of the farm Mamatwan 331 and the farm Moab 700 in the Kgalagadi District Municipality of the Northern Cape Province. Pretoria.

PGS HERITAGE. (2010). Heritage Impact Assessment for the Amari Kongoni Manganese Mine on Portion 1 and a section of the Remainder of the farm Kongoni 311 in the Kgalagadi District Municipality of the Northern Cape Province. Pretoria.

PGS HERITAGE. (2010). Heritage Impact Assessment for the Proposed Lehating Mining (Pty) Ltd underground manganese mine on Portions of the Farm Lehating 714, approximately 20km northwest of Hotazel, Northern Cape Province . Pretoria.

SAMANGAN, 1977: *Kalahari Wealth: The story of manganese*. Purnell & Sons Pty. Ltd., Cape Town.

SMIT, A.P., 1966: *Wateroog in die Dorland: Ned. Geref. Kerk Kuruman 1916-1966*. Kerkrad van die Gemeente Kuruman, Kuruman.

SNYMAN, P.H.R., 1992: *Kuruman 1800-1990*, PhD Thesis, University of South Africa.

THACKERAY, A.I., THACKERAY, J.F. & BEAUMONT, P.B. 1983. Excavations at the Blinkklipkop specularite mine near Postmasburg, northern Cape. *South African Archaeological Bulletin* 38:17-25.

TLOU, T. AND A. CAMPBELL, 1997: *History of Botswana*. Macmillan, Gaborone.

VAN DER MERWE, P.J., 1949: *Pioniers van die Dorsland*, Nasionale Pers, Kaapstad.

Archival Records

MNW, 916, MM444/28

MNW, 986, MM1661/29

MNW, 377, MM1604/17

NTS, 7752, 22/335

Archival Maps

National Archives, Maps, 1/441

National Archives, Maps, 2/304

National Archives, Maps, 2/1085

National Archives, Maps, 3/302

National Archives, Maps, 3/533

Archival Photographs

National Archives, TAB, 16396

National Archives, TAB, 36277

Supporting documentation

AUSTRALIAN HISTORIC THEMES. A Framework for use in Heritage Assessment and Management. Australian Heritage Commission. 2001.

AUSTRALIA ICOMOS. The Burra Charter (The Australian ICOMOS charter for places of cultural significance). 2002.

DOCUMENTS ON CULTURAL HERITAGE PROTECTION. 2002.

INTERNATIONAL COUNCIL OF MONUMENTS & SITE DOCUMENTS. Guidelines to the Burra Charter: Conservation Policy. 1985.

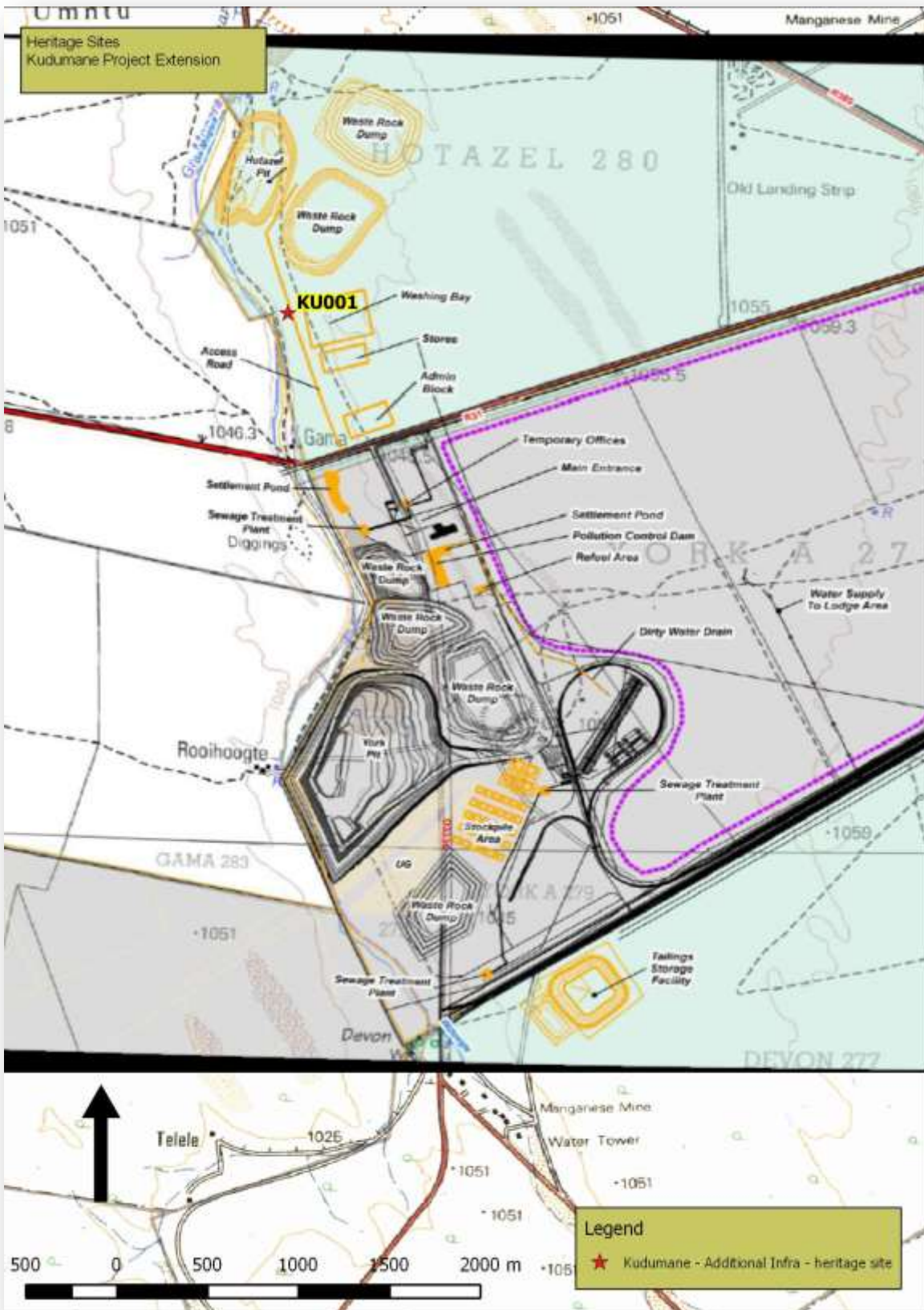
INTERNATIONAL COUNCIL OF MONUMENTS & SITE DOCUMENTS. Guidelines to the Burra Charter: Cultural Significance. 1984.

INTERNATIONAL COUNCIL OF MONUMENTS & SITE DOCUMENTS. Conventions, Charters and Guidelines. 2002.

STANDARD AND GUIDANCE FOR ARCHAEOLOGICAL DESK-BASED ASSESSMENT. 1994.

The Institute of Field Archaeologists, 2001. STANDARD AND GUIDANCE - for an archaeological watching brief. United Kingdom

Appendix A
HERITAGE MAP



LEGISLATIVE REQUIREMENTS – TERMINOLOGY AND ASSESSMENT CRITERIA**3.1 General principles**

In areas where there has not yet been a systematic survey to identify conservation worthy places, a permit is required to alter or demolish any structure older than 60 years. This will apply until a survey has been done and identified heritage resources are formally protected.

Archaeological and palaeontological sites, materials, and meteorites are the source of our understanding of the evolution of the earth, life on earth and the history of people. In the heritage legislation, permits are required to damage, destroy, alter, or disturb them. People who already possess such material are required to register it. The management of heritage resources is integrated with environmental resources and this means that, before development takes place heritage resources are assessed and, if necessary, rescued.

In addition to the formal protection of culturally significant graves, all graves, which are older than 60 years and are not in a cemetery (such as ancestral graves in rural areas), are protected. The legislation protects the interests of communities that have an interest in the graves: they must be consulted before any disturbance takes place. The graves of victims of conflict and those associated with the liberation struggle should be identified, cared for, protected and memorials erected in their honour.

Anyone who intends to undertake a development must notify the heritage resource authority and if there is reason to believe that heritage resources will be affected, an impact assessment report must be compiled at the construction company's cost. Thus, the construction company will be able to proceed without uncertainty about whether work will have to be stopped if an archaeological or heritage resource is discovered.

According to the National Heritage Act (Act 25 of 1999 section 32) it is stated that:

An object or collection of objects, or a type of object or a list of objects, whether specific or generic, that is part of the national estate and the export of which SAHRA deems it necessary to control, may be declared a heritage object, including –

- objects recovered from the soil or waters of South Africa, including archaeological and palaeontological objects, meteorites and rare geological specimens;
- visual art objects;
- military objects;
- numismatic objects;
- objects of cultural and historical significance;
- objects to which oral traditions are attached and which are associated with living heritage;
- objects of scientific or technological interest;
- books, records, documents, photographic positives and negatives, graphic material, film or video or sound recordings, excluding those that are public records as defined in section 1 (xiv) of the National Archives of South Africa Act, 1996 (Act No. 43 of 1996), or in a provincial law pertaining to records or archives; and
- any other prescribed category.

Under the National Heritage Resources Act (Act No. 25 of 1999), provisions are made that deal with, and offer protection to, all historic and pre-historic cultural remains, including graves and human remains.

3.2 Graves and cemeteries

Graves younger than 60 years fall under Section 2(1) of the Removal of Graves and Dead Bodies Ordinance (Ordinance no. 7 of 1925) as well as the Human Tissues Act (Act 65 of 1983) and National Health Act (Act 61 Of 2003) and are the jurisdiction of the National Department of Health and the relevant Provincial Department of Health and must be submitted for final approval to the Office of the relevant Provincial Premier. This function is usually delegated to the Provincial MEC for Local Government and Planning, or in some cases the MEC for Housing and Welfare. Authorisation for exhumation and reinterment must also be obtained from the relevant local or regional council where the grave is situated, as well as the relevant local or

regional council to where the grave is being relocated. All local and regional provisions, laws and by-laws must also be adhered to. In order to handle and transport human remains, the institution conducting the relocation should be authorised under Section 24 of Act 65 of 1983 (Human Tissues Act).

Graves older than 60 years, but younger than 100 years, fall under Section 36 of Act 25 of 1999 (National Heritage Resources Act) as well as the Human Tissues Act (Act 65 of 1983) and National Health Act (Act 61 Of 2003) and are the jurisdiction of the South African Heritage Resource Agency (SAHRA). The procedure for Consultation Regarding Burial Grounds and Graves (Section 36(5) of Act 25 of 1999) is applicable to graves older than 60 years that are situated outside a formal cemetery administrated by a local authority. Graves in the category located inside a formal cemetery administrated by a local authority will also require the same authorisation as set out for graves younger than 60 years over and above SAHRA authorisation.

If the grave is not situated inside a formal cemetery but is to be relocated to one, permission from the local authority is required and all regulations, laws and by-laws set by the cemetery authority must be adhered to.

HERITAGE ASSESSMENT METHODOLOGY

The section below outlines the assessment methodologies utilised in the study.

The Heritage Impact Assessment (HIA) report compiled by PGS Heritage (PGS) for the **Ntsimbintle Mining** – prospecting activities have assessed the significance of the heritage resources found on site by utilising the classification standards as prescribed by SAHRA .

The significance of heritage sites was based on four main criteria:

- **site integrity** (i.e. primary vs. secondary context),
- **amount of deposit, range of features** (e.g., stonewalling, stone tools and enclosures),
 - Density of scatter (dispersed scatter)
 - Low - <10/50m²
 - Medium - 10-50/50m²
 - High - >50/50m²
- **uniqueness** and
- **potential** to answer present research questions.

Table 2: Site significance classification standards as prescribed by SAHRA

FIELD RATING	GRADE	SIGNIFICANCE	RECOMMENDED MITIGATION
National Significance (NS)	Grade 1	-	Conservation; National Site nomination
Provincial Significance (PS)	Grade 2	-	Conservation; Provincial Site nomination
Local Significance (LS)	Grade 3A	High Significance	Conservation; Mitigation not advised
Local Significance (LS)	Grade 3B	High Significance	Mitigation (Part of site should be retained)
Generally Protected A (GP.A)	Grade 4A	High / Medium Significance	Mitigation before destruction
Generally Protected B (GP.B)	Grade 4B	Medium Significance	Recording before destruction
Generally Protected C (GP.A)	Grade 4C	Low Significance	Destruction

THE SIGNIFICANCE RATING SCALES FOR THE PROPOSED PROSPECTING ACTIVITIES ON HERITAGE RESOURCES

IMPACT ASSESSMENT METHODOLOGY

In order to ensure uniformity, a standard impact assessment methodology will be utilised so that a wide range of impacts can be compared. The impact assessment methodology makes provision for the assessment of impacts against the following criteria:

- Significance;
- Spatial scale;
- Temporal scale;
- Probability; and
- Degree of certainty.

PART A: DEFINITION AND CRITERIA *		
Definition of SIGNIFICANCE	Significance = consequence x probability	
Definition of CONSEQUENCE	Consequence is a function of severity, spatial extent and duration	
Criteria for ranking of the SEVERITY of environmental impacts	H	Substantial deterioration (death, illness or injury). Recommended level will often be violated. Vigorous community action.
	M	Moderate/ measurable deterioration (discomfort). Recommended level will occasionally be violated. Widespread complaints.
	L	Minor deterioration (nuisance or minor deterioration). Change not measurable/ will remain in the current range. Recommended level will never be violated. Sporadic complaints.
	L+	Minor improvement. Change not measurable/ will remain in the current range. Recommended level will never be violated. Sporadic complaints.
	M+	Moderate improvement. Will be within or better than the recommended level. No observed reaction.
	H+	Substantial improvement. Will be within or better than the recommended level. Favourable publicity.
Criteria for ranking the DURATION of impacts	L	Quickly reversible. Less than the project life. Short term
	M	Reversible over time. Life of the project. Medium term
	H	Permanent. Beyond closure. Long term.
Criteria for ranking the SPATIAL SCALE of impacts	L	Localised - Within the site boundary.
	M	Fairly widespread – Beyond the site boundary. Local
	H	Widespread – Far beyond site boundary. Regional/ national

PART B: DETERMINING CONSEQUENCE

SEVERITY = L

DURATION	Long term	H	Medium	Medium	Medium
	Medium term	M	Low	Low	Medium
	Short term	L	Low	Low	Medium

SEVERITY = M

DURATION	Long term	H	Medium	High	High
	Medium term	M	Medium	Medium	High
	Short term	L	Low	Medium	Medium

SEVERITY = H

DURATION	Long term	H	High	High	High
	Medium term	M	Medium	Medium	High
	Short term	L	Medium	Medium	High
			L	M	H
			Localised - Within site boundary - Site	Fairly widespread - Beyond site boundary - Local	Widespread - Far beyond site boundary - Regional/ national
SPATIAL SCALE					

PART C: DETERMINING SIGNIFICANCE

PROBABILITY (of exposure to impacts)	Definite/ Continuous	H	Medium	Medium	High
	Possible/ frequent	M	Medium	Medium	High
	Unlikely/ seldom	L	Low	Low	Medium
			L	M	H
CONSEQUENCE					

PART D: INTERPRETATION OF SIGNIFICANCE

Significance	Decision guideline
High	It would influence the decision regardless of any possible mitigation.
Medium	It should have an influence on the decision unless it is mitigated.
Low	It will not have an influence on the decision.

*H = high, M= medium and L= low and + denotes a positive impact.