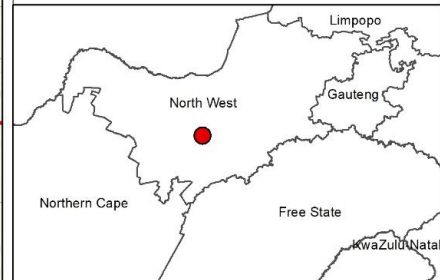


# Grid Connection Infrastructure for the Houthaalboomen Solar PV Cluster, North West Province

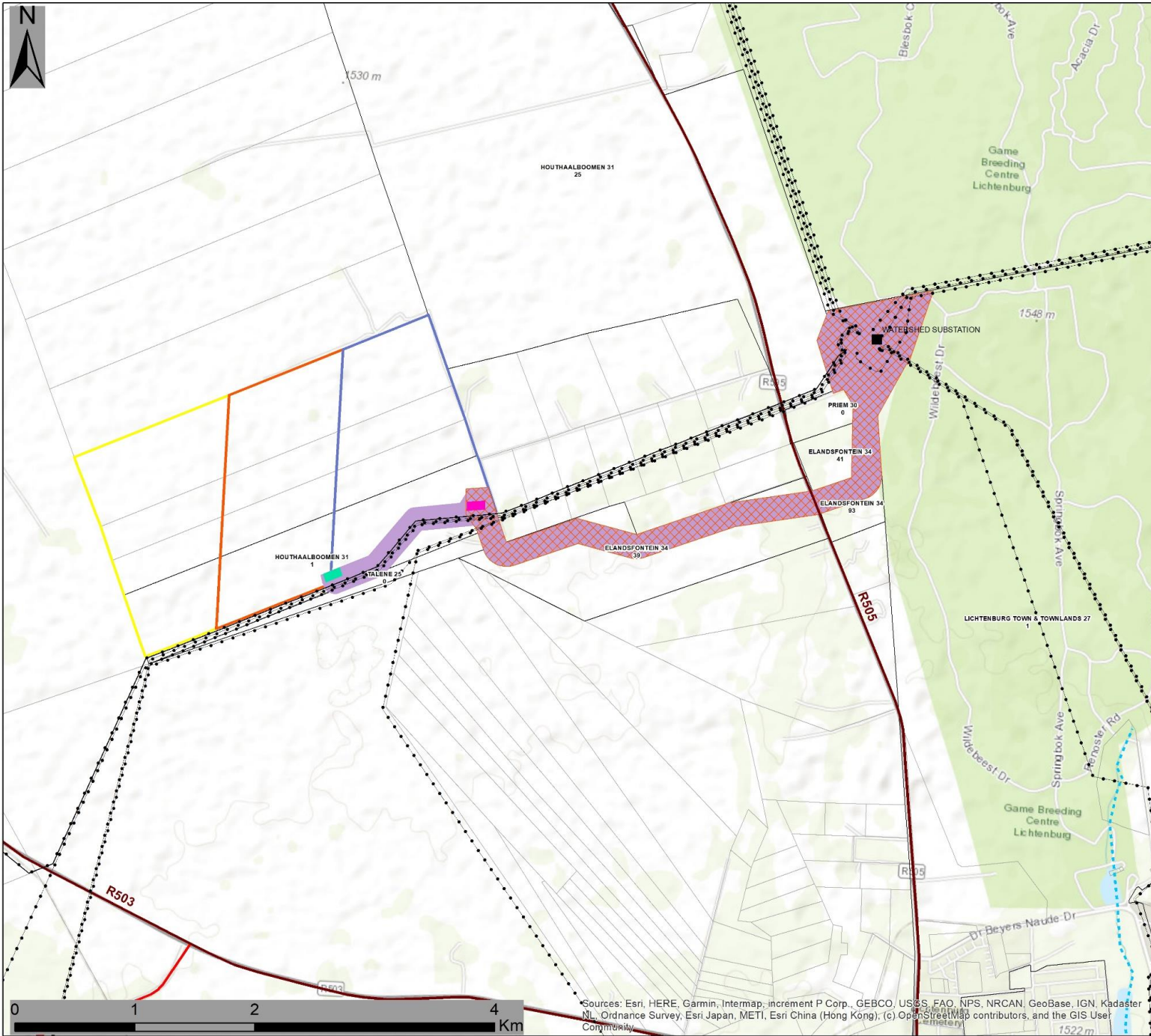
## Locality Map

- Legend**
- Town
  - Eskom Substation
  - Non-Perennial River
  - Perennial River
  - Regional Road
  - Main Road
  - - - Existing Power Lines
  - █ Setaria PV Development
  - █ Dicoma PV Development Area
  - █ Barleria PV Development
  - Farm Portions
  - Affected Properties
  - Grid Connection Corridor - Alternative 1 (200m wide)
  - Grid Connection Corridor - Alternative 2 (200m wide)

Scale: 50 000  
 Projection: LO19  
 Map Ref: Houthaalboomen Grid Locality Map



Sources: Esri, HERE, Garmin, Intermap, increment P Corp., GEBCO, USGS, FAO, NPS, NRCAN, GeoBase, IGN, Kadaster NL, Ordnance Survey, Esri Japan, METI, Esri China (Hong Kong), (c) OpenStreetMap contributors, and the GIS User Community



# Grid Connection Infrastructure for the Houthaalboomen Solar PV Cluster, North West Province

## Layout Map

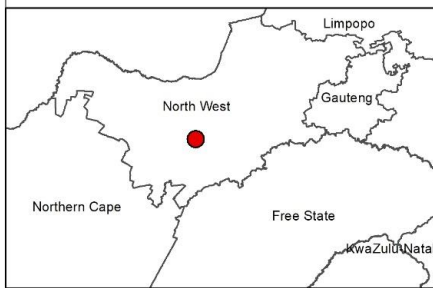
### Legend

- Eskom Substation
- Non-Perennial River
- Perennial River
- Regional Road
- Main Road
- Existing Power Lines
- ▭ Setaria PV Development Area
- ▭ Dicoma PV Development Area
- ▭ Barleria PV Development Area
- ▭ Farm Portions
- ▭ Affected Properties

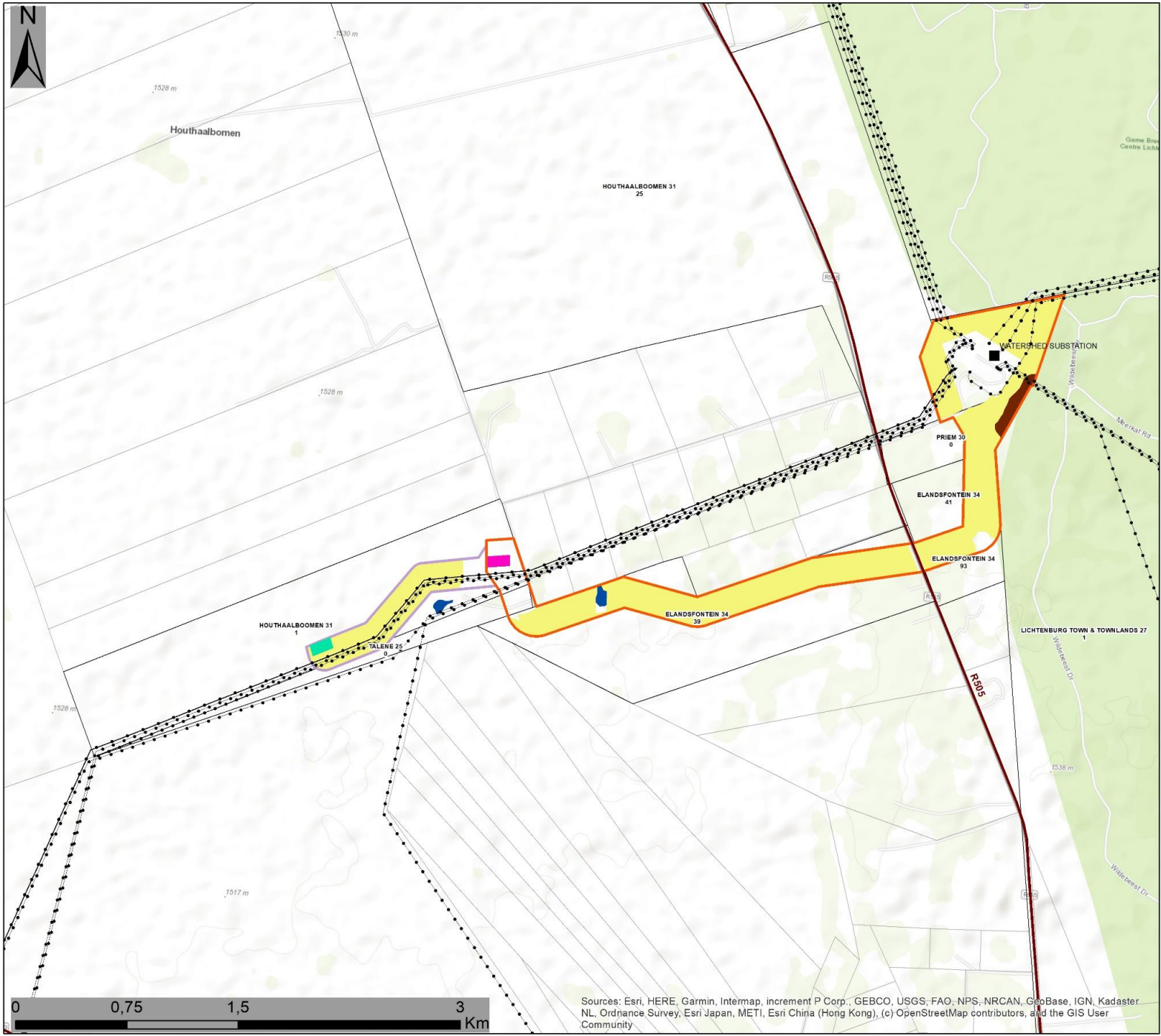
### Grid Connection Infrastructure:

- Houthaalboomen Grid Connection - Alternative 1**
- ▭ Collector Substation - Alternative 1
  - ▭ Grid Connection Corridor - Alternative 1 (200m wide)
- Houthaalboomen Grid Connection - Alternative 2**
- ▭ Collector Substation - Alternative 2
  - ▭ Grid Connection Corridor - Alternative 2 (200m wide)

Scale: 30 000  
 Projection: LO19  
 Map Ref: Houthaalboomen Grid Layout Map



Sources: Esri, HERE, Garmin, Intermap, increment P Corp., GEBCO, USGS, FAO, NPS, NRCAN, GeoBase, IGN, Kadaster NL, Ordnance Survey, Esri Japan, METI, Esri China (Hong Kong); (c) OpenStreetMap contributors, and the GIS User Community



# Grid Connection Infrastructure for the Houthaalboomen Solar PV Cluster, North West Province

## Sensitivity & Layout Map

### Legend

- Eskom Substation
- Non-Perennial River
- Perennial River
- Regional Road
- Main Road
- Existing Power Lines
- Farm Portions
- Affected Properties

### Grid Connection Infrastructure:

- Houthaalboomen Grid Connection - Alternative 1**
- Collector Substation - Alternative 1
  - Grid Connection Corridor - Alternative 1 (200m wide)
- Houthaalboomen Grid Connection - Alternative 2**
- Collector Substation - Alternative 2
  - Grid Connection Corridor - Alternative 2 (200m wide)

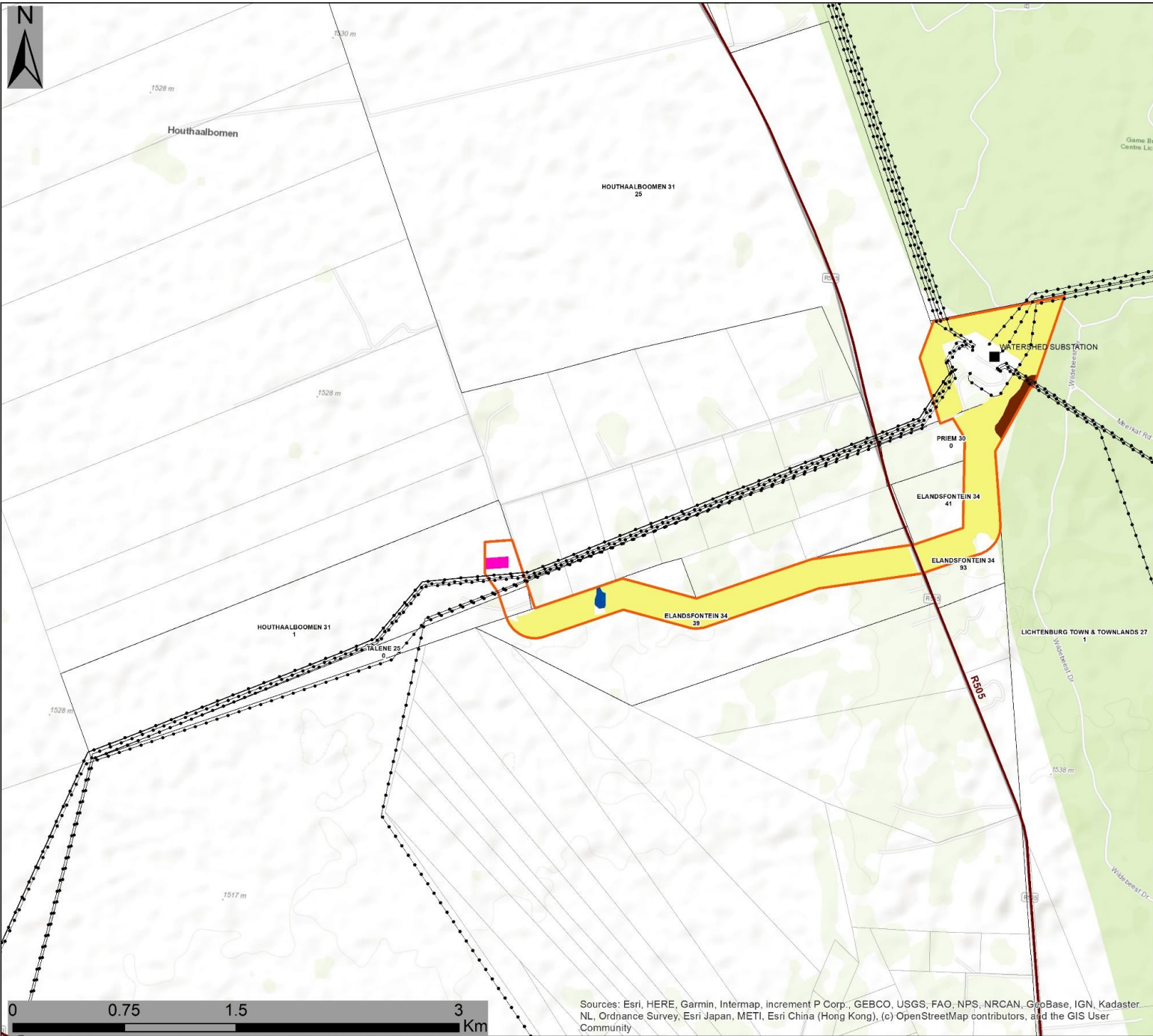
### Environmental Sensitivities

- Nkonkoni Soils (Medium Agricultural Potential Sensitivity)
- Primary Grassland (Medium Ecological Sensitivity)
- Watering Points (High Avifauna Sensitivity)

Scale: 24 000  
 Projection: LO19  
 Map Ref: Houthaalboomen Grid Sens Layout Map



Sources: Esri, HERE, Garmin, Intermap, increment P Corp., GEBCO, USGS, FAO, NPS, NRCAN, GeoBase, IGN, Kadaster NL, Ordnance Survey, Esri Japan, METI, Esri China (Hong Kong), (c) OpenStreetMap contributors, and the GIS User Community



# Grid Connection Infrastructure for the Houthaalboomen Solar PV Cluster, North West Province

## Sensitivity & Preferred Layout Map

### Legend

- Eskom Substation
- Regional Road
- Existing Power Lines
- Farm Portions
- Affected Properties

### Grid Connection Infrastructure:

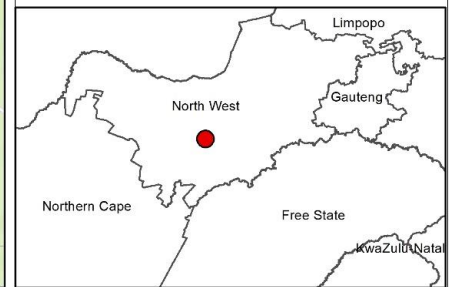
#### Houthaalboomen Preferred Grid Connection - Alternative 2

- Collector Substation - Alternative
- Grid Connection Corridor - Alternative 2 (200m)

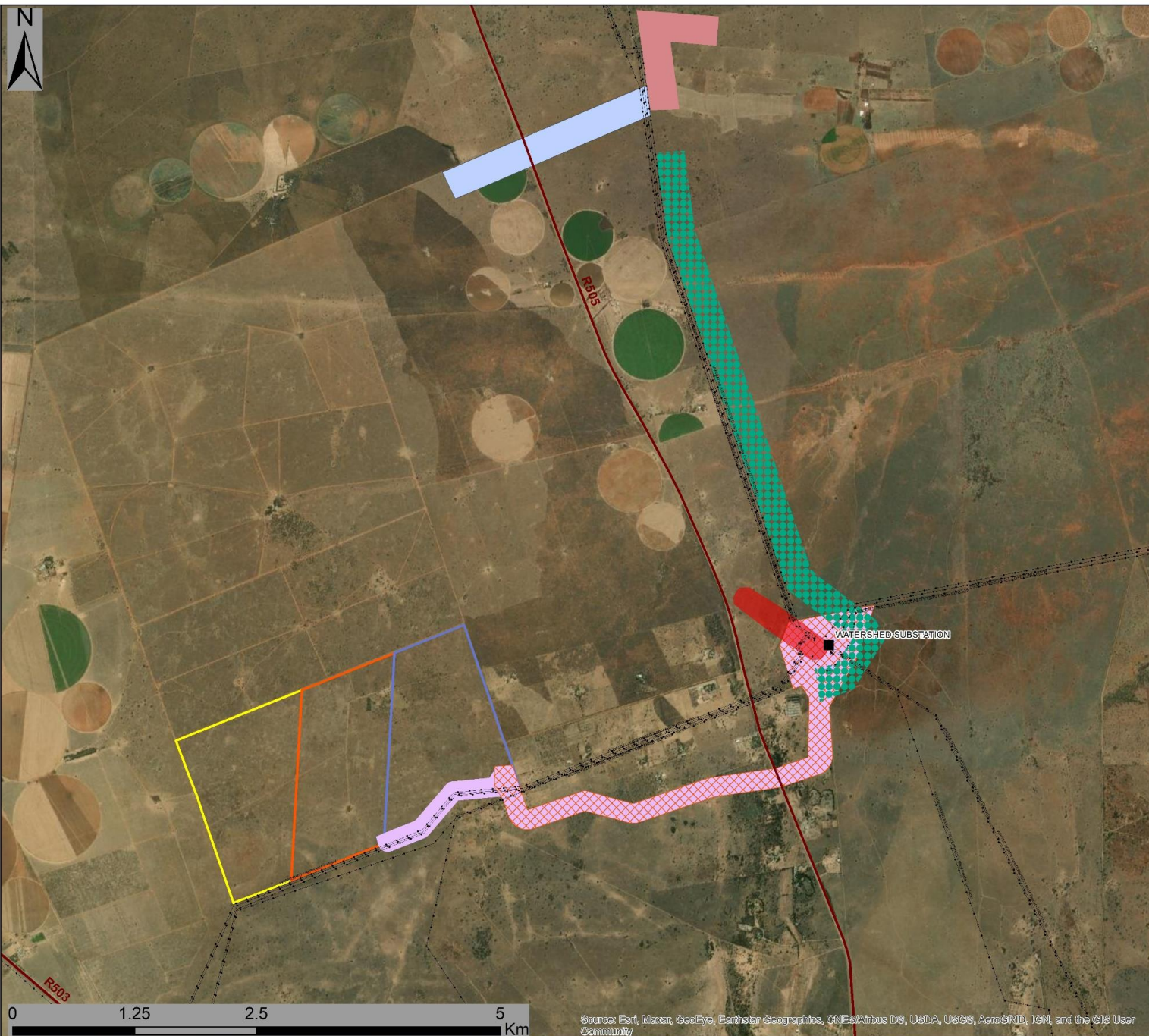
### Environmental Sensitivities

- Nkonkoni Soils (medium agricultural potential sensitivity)
- Primary Grassland (medium ecological sensitivity)
- Watering Point (high avifauna sensitivity)

Scale: 24 000  
 Projection: LO19  
 Map Ref: Houthaalboomen Grid Sens Layout Map



Sources: Esri, HERE, Garmin, Intermap, increment P Corp., GEBCO, USGS, FAO, NPS, NRCAN, GeoBase, IGN, Kadaster NL, Ordnance Survey, Esri Japan, METI, Esri China (Hong Kong), (c) OpenStreetMap contributors, and the GIS User Community



# Grid Connection Infrastructure for the Houthaalboomen Solar PV Cluster, North West Province

## Cumulative Map

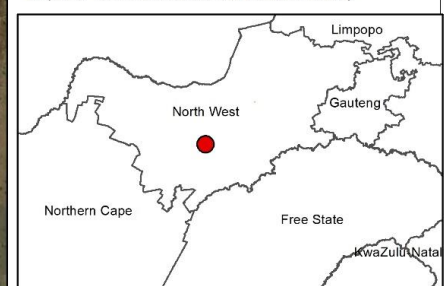
### Legend

- Eskom Substation
- Regional Road
- - - Existing Power Lines
- Setaria PV Development
- Dicoma PV Development Area
- Barleria PV Development

### Grid Connection Infrastructure:

- Tlitseng PV Cluster Grid Corridor
- Lichtenburg 1 PV Facility Grid Corridor
- Lichtenburg 2 PV Facility Grid Corridor
- Lichtenburg 3 PV Facility Grid Corridor
- Houthaalboomen Grid Connection - Alternative 1**
- Grid Connection Corridor - Alternative 1 (200m wide)
- Houthaalboomen Grid Connection - Alternative 2**
- Grid Connection Corridor - Alternative 2 (200m wide)

Scale: 30 000  
 Projection: LO19  
 Map Ref: Houthaalboomen Grid Cumulative Map



Sources: Esri, Maxar, GeoEye, Earthstar Geographics, CNES/Airbus DS, USDA, USGS, AeroGRID, IGN, and the GIS User Community