

Khunab Solar Grid Connection, Northern Cape Province

Locality Map

Legend

- Town
- Eskom Substations
- ★ Khi Solar 1 CSP Facility (existing)
- Eskom power line
- Perennial River
- Non-perennial River
- National Route
- Regional Road
- Main Road
- Railway Line
- Grid Connection Corridor (300m wide)
- Khunab Solar PV Development
- Affected Property
- Farm Portions

1:194 498
 Scale:
 Projection: LO21
 Ref. Grid connection - Locality Map 11.10.19





Khunab Solar Grid Connection, Northern Cape Province

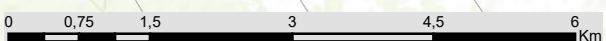
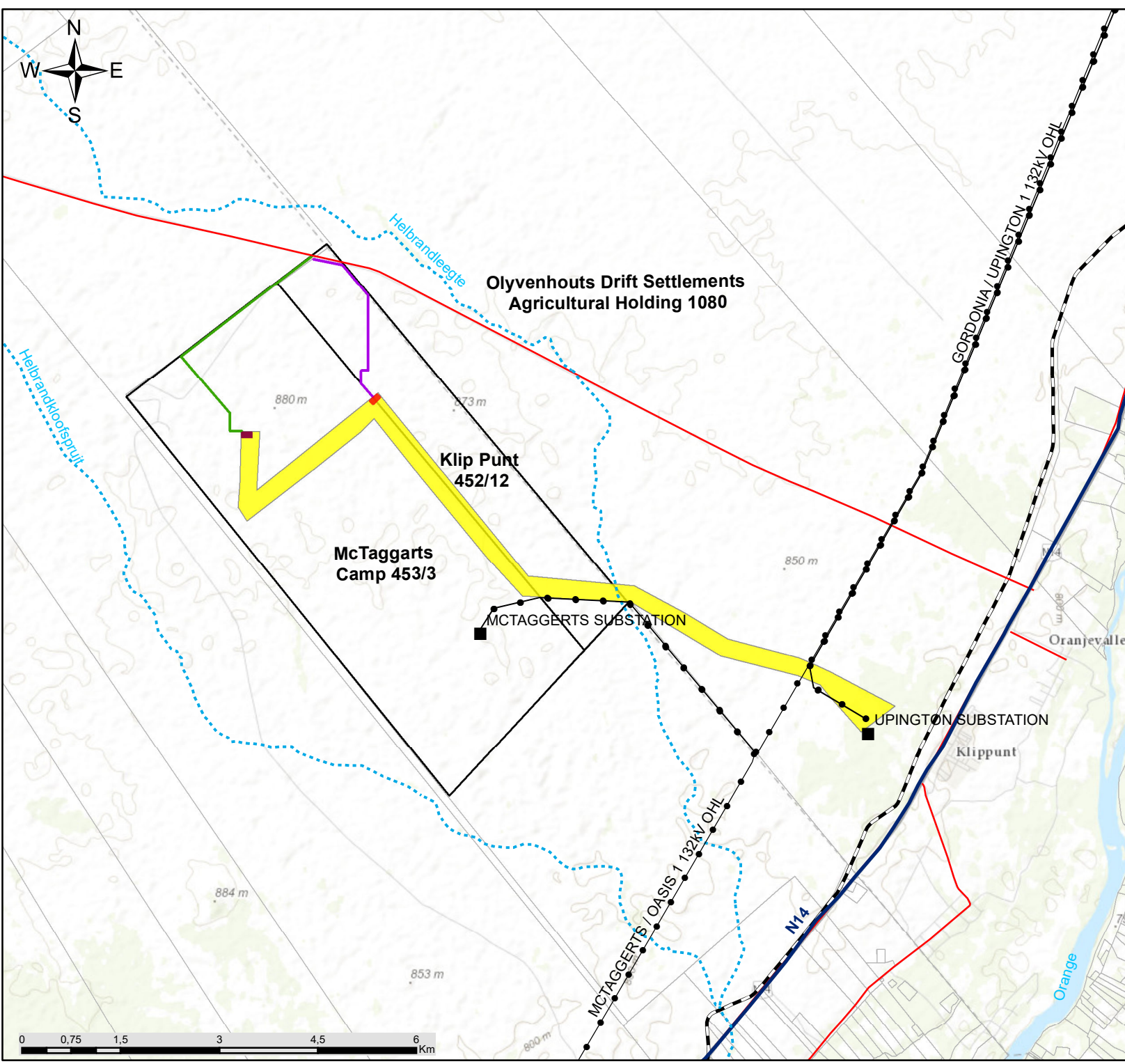
Layout Map

Legend

- Existing Eskom Substations
- Eskom Power Line
- ⋯ Non-perennial River
- National Route
- Main Road
- Railway Line
- Study Area
- Farm Portions

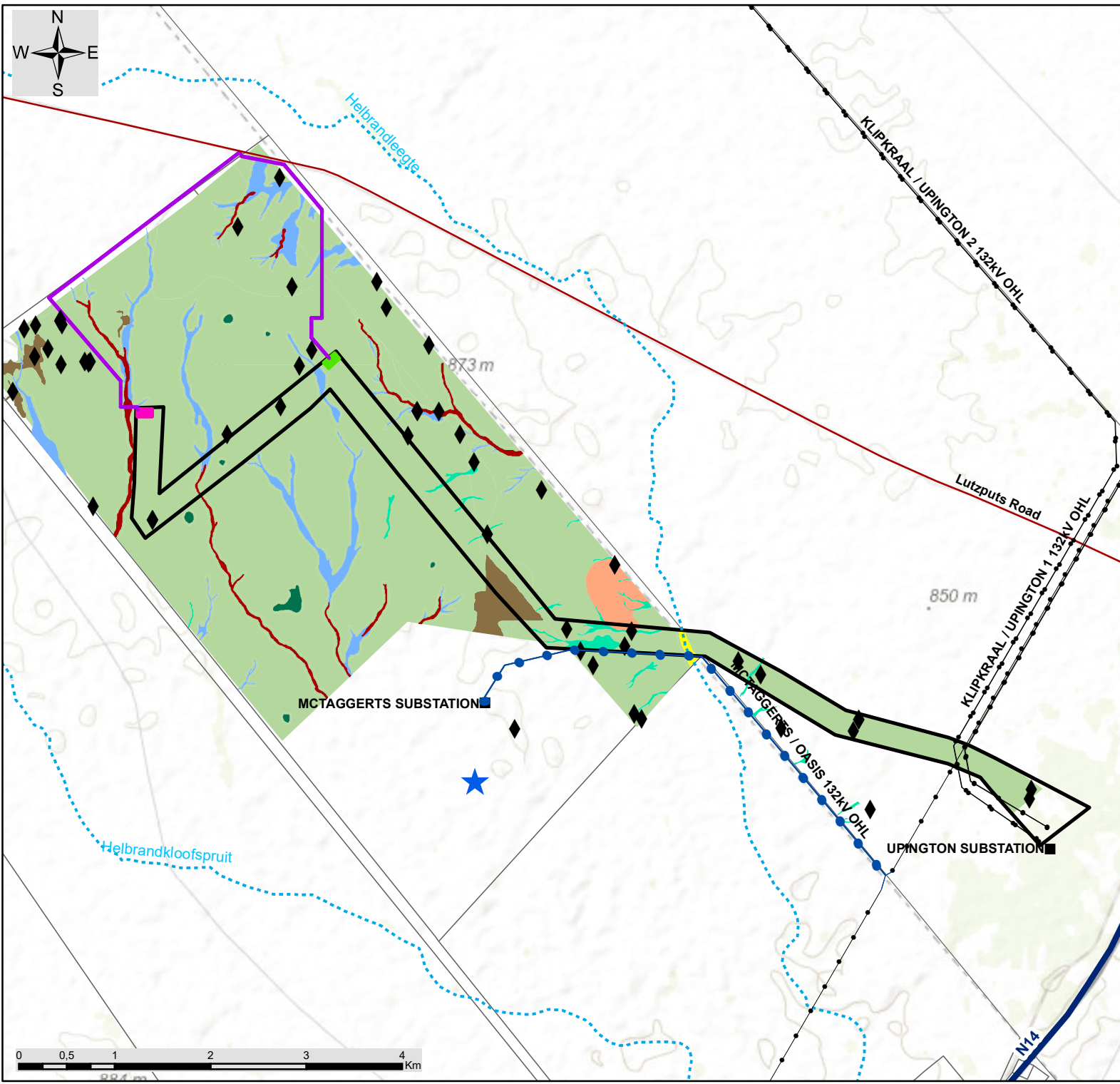
Layout

- Khunab Collector Substation Access Road
- Klip Punt Collector Substation Access Road
- Khunab Collector Substation
- Klip Punt Collector Substation
- Grid Connection Corridor (300m wide)
- Farm Portions



Scale: 1:80 000
 Projection: LO21
 Ref: Grid connection - Layout Map 28.10.19





Khunab Solar Grid Connection, Northern Cape Province

Environmental Feature and Layout Map

Legend

- Eskom Substations
- ★ Khi Solar 1 CSP Facility (existing)
- Khi Solar One Powerline Route
- Eskom Power Line
- ⋯ Non-perennial River
- National Route
- Main Road

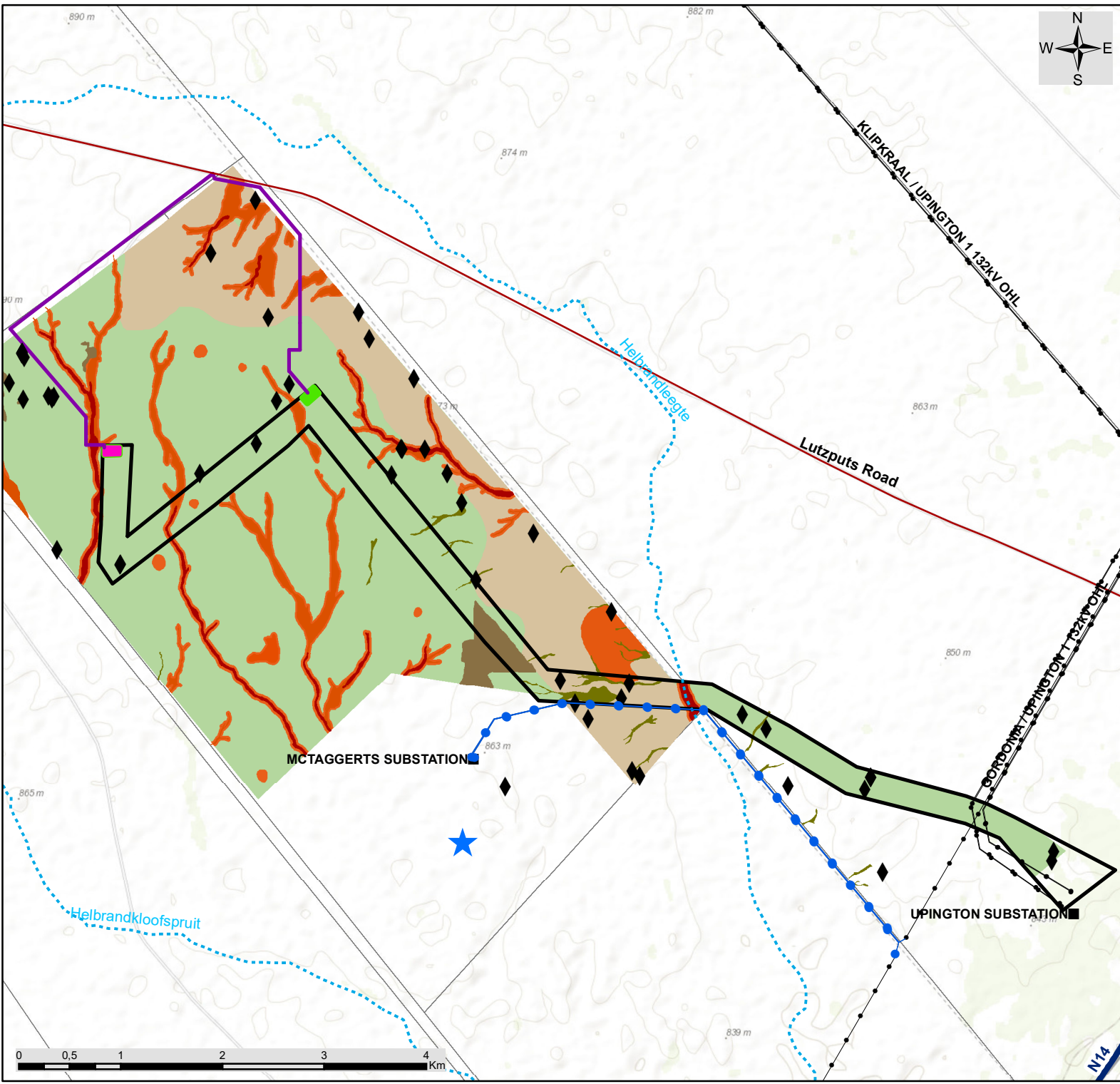
Layout

- Access Roads
- Khunab Collector Substation
- Klip Punt Collector Substation
- ▭ Grid Connection Corridor (300m wide)

Sensitivities

- ◆ Heritage Resources
- Quartz patches and outcrops
- Major Drainage Line
- Drainage Line
- Poorly developed drainage line
- Wash
- Pan
- Plains
- Transformed

Scale: 1:56 194
 Projection: LO21
 Ref: Grid - Sensitivity Map_mapped by feature 29.10.19



Khunab Solar Grid Connection, Northern Cape Province

Environmental Sensitivity and Layout Map

Legend

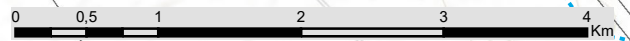
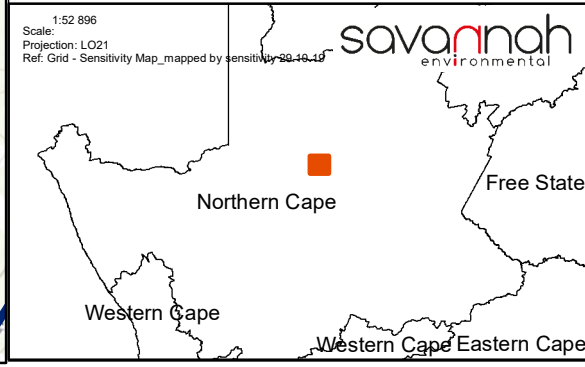
- Eskom Substations
- ★ KHI Solar 1 CSP Facility (existing)
- KHI Solar One Powerline Route
- Eskom Power Line
- ⋯ Non-perennial River
- National Route
- Main Road

Layout

- Access Roads
- Khunab Collector Substation
- Klip Punt Collector Substation
- Grid Connection Corridor (300m wide)

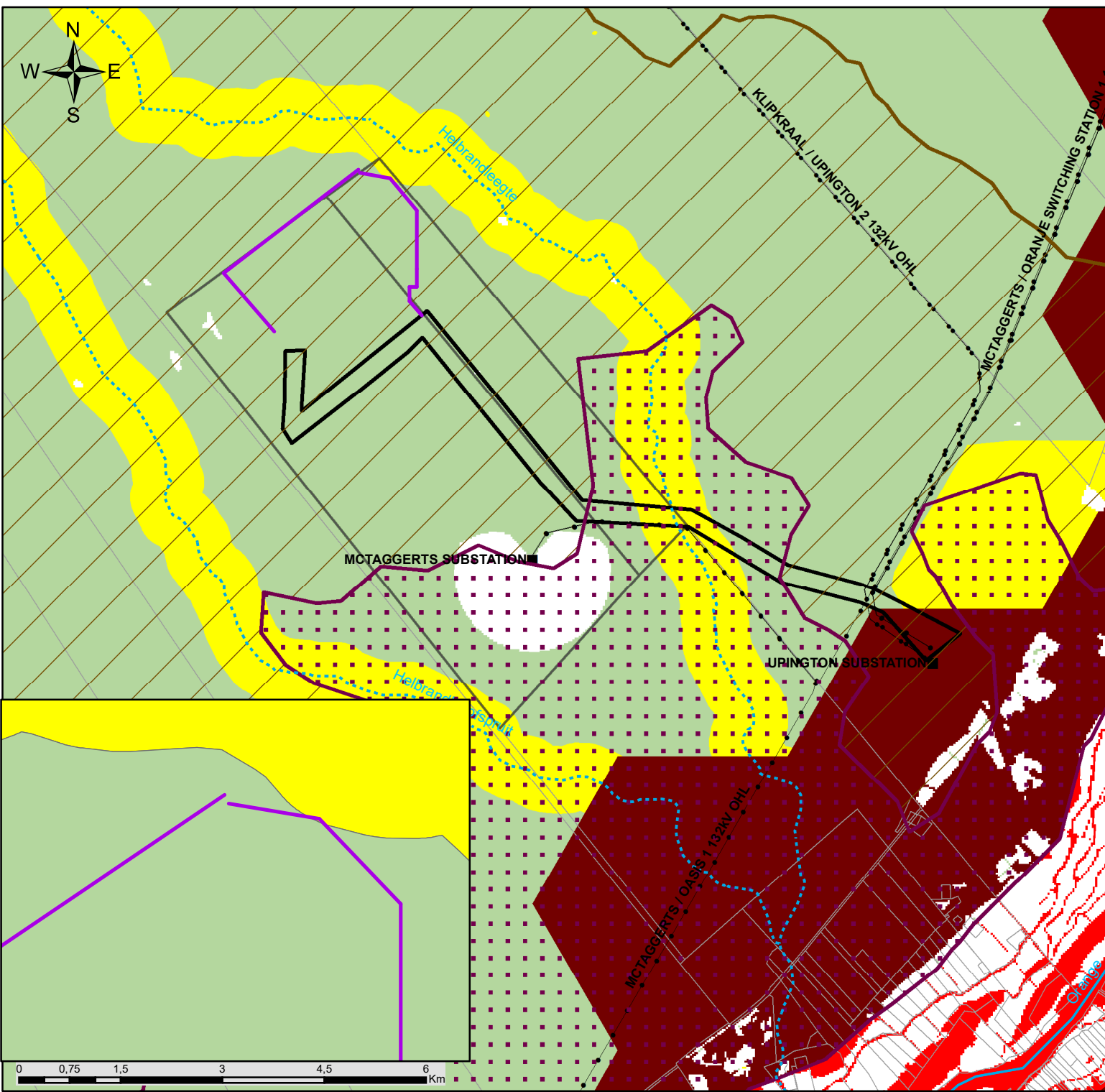
Sensitivities

- ◆ Low Heritage Sensitivity
- Transformed
- Very high sensitivity (no-go) (Avifauna and Ecological)
- High sensitivity (Avifauna, Ecological)
- Medium high sensitivity (Avifauna)
- Medium sensitivity (Ecological)
- Medium sensitivity (Avifauna)



Khunab Solar Grid Connection, Northern Cape Province

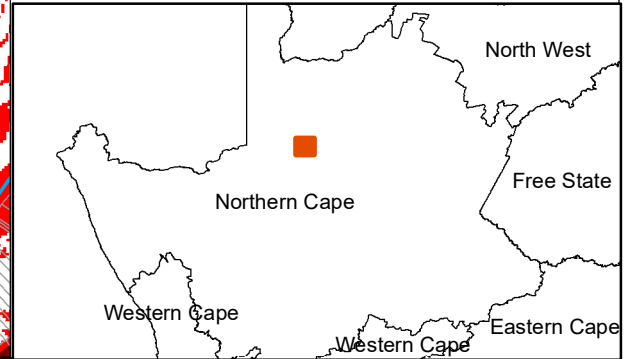
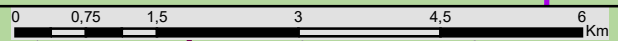
Desktop Environmental Sensitivity Map

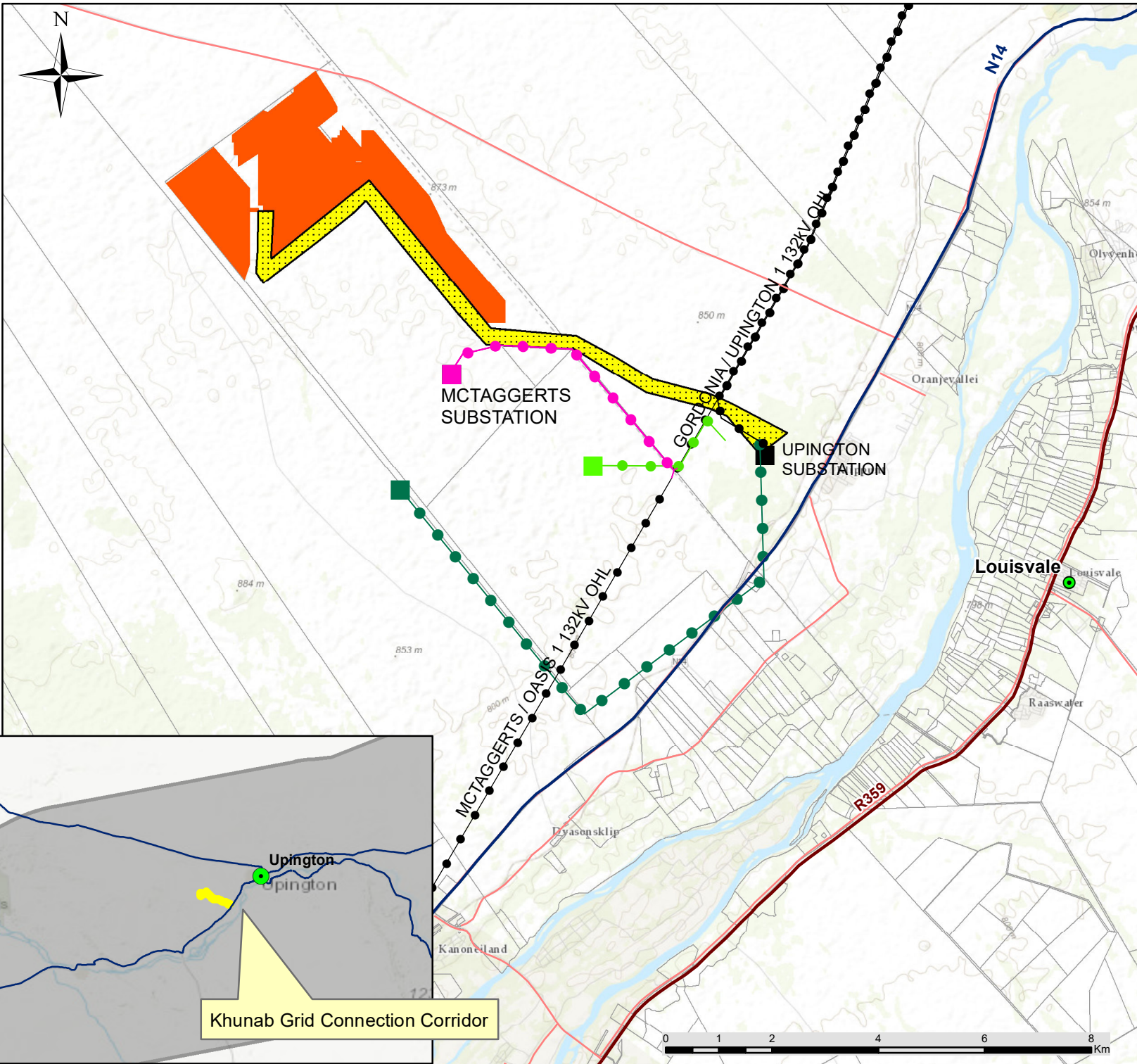


Legend

- Eskom Substations
 - Access Roads
 - Eskom power line
 - Farm Portions
 - ▭ Grid Connection Corridor (300m wide)
- ### Environmental Sensitivities
- Perennial River
 - ⋯ Non-perennial River
- ### Vegetation
- ▨ Bushmanland Arid Grassland (Least threatened)
 - ▨ Kalahari Karroid Shrubland (Least threatened)
- ### Northern Cape CBA
- Critical Biodiversity Area One
 - Critical Biodiversity Area Two
 - Ecological Support Area
 - Other Natural Areas

Scale: 1:80 000
 Projection: LO21
 Ref. Grid: Environmental Sensitivity Map 25.10.19



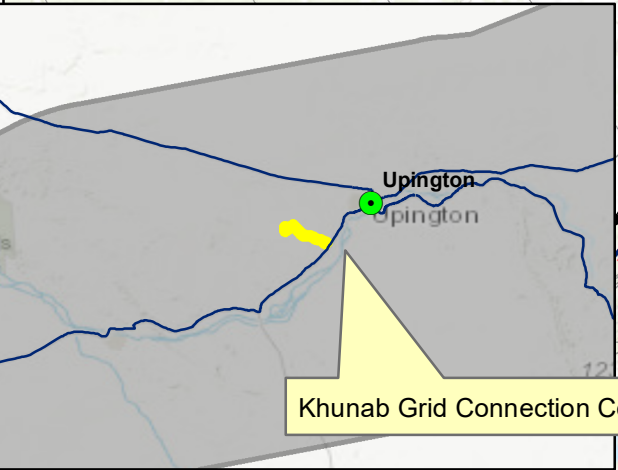


Khunab Solar Grid Connection Northern Cape Province

Cumulative Map

Legend

- Town
- Main Road
- Regional Road
- National Route
- Eskom Power Line
- Eskom Substations
- Grid Connection Corridor (300m wide)
- Khunab Solar PV Development
- Farm Portions
- Northern Strategic Transmission Corridor
- Operational:**
- Khi Solar One On-Site Substation
- Khi Solar One Powerline Route
- Under Construction:**
- Sirius Solar PV One Substation
- Sirius Solar PV One Powerline Route
- Dyason's Klip PV One and Two Substation
- Dyason's Klip PV One and Two Powerline Route



Scale: 1:20 000 000
 Projection: LO21
 Ref: Khunab Solar Grid Connection Cumulative_15.10.19

