
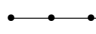
















# Aberdeen Wind Farm Facility:

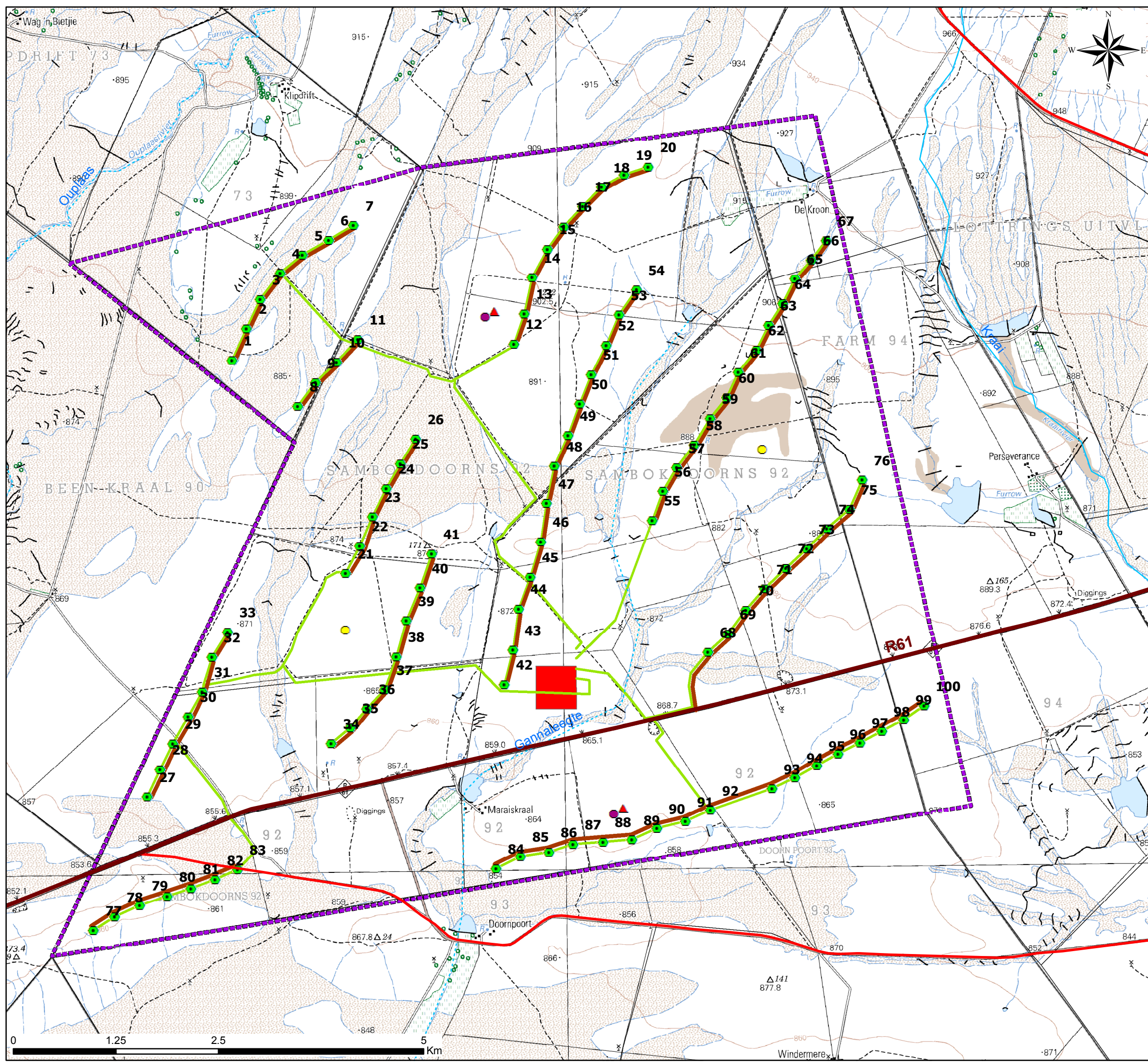
## Layout Plan

### Legend

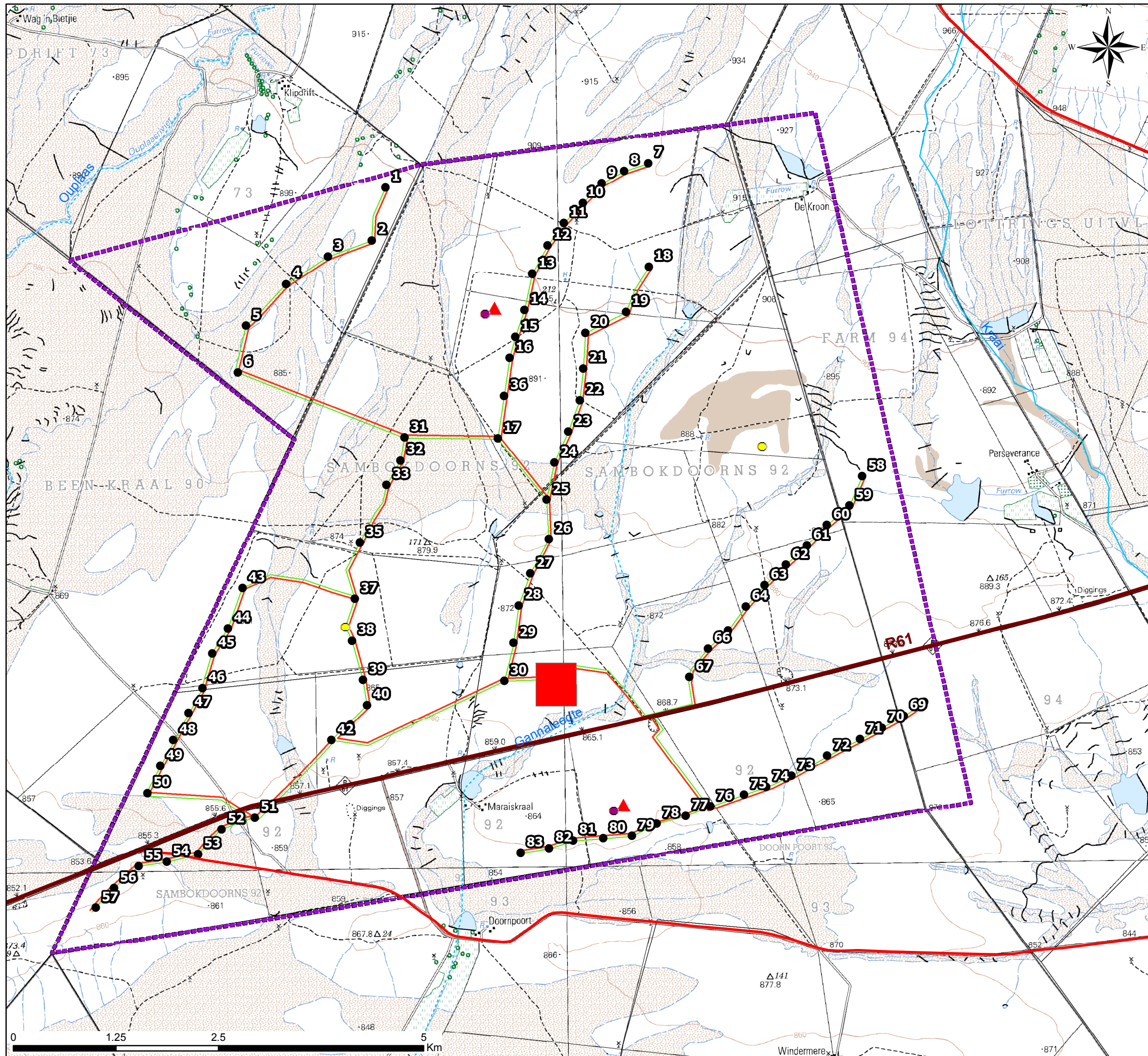
-  Distribution substation
-  Existing power line
-  Railway Line
-  National route
-  Regional road
-  Main road
-  Perennial river
-  Non-perennial river

### Layout Plan:

-  Wind Turbines
-  Met Towers
-  Sodar Locations
-  Sodar Correlation Locations
-  Electrical Collection
-  Site Roads
-  Electrical Substation
-  Project Boundary







# Aberdeen Wind Farm Facility:

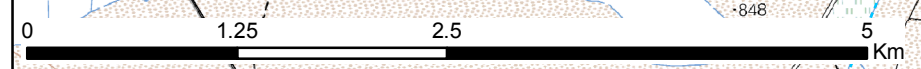
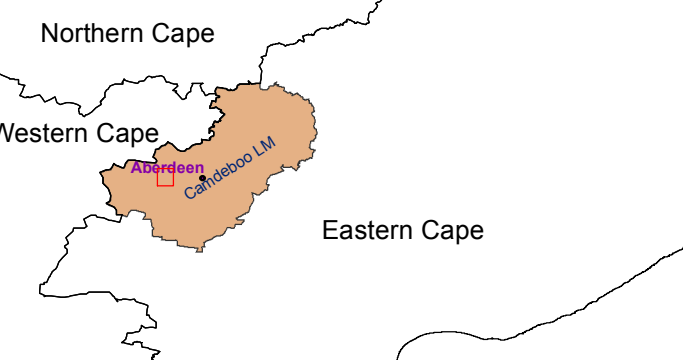
Revised Layout Plan

## Legend

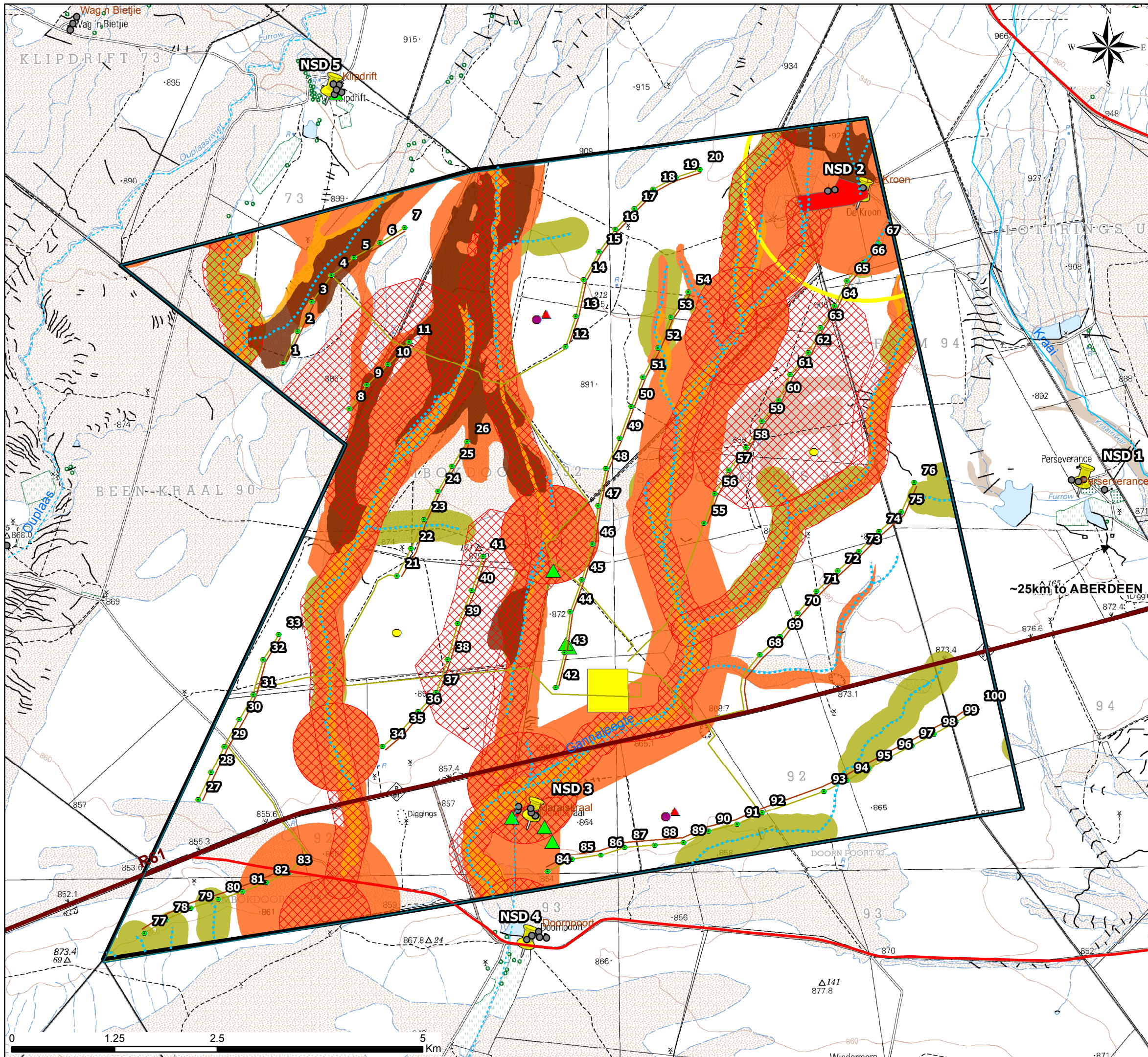
- Distribution substation
- Existing power line
- National route
- Regional road
- Main road
- Perennial river
- Non-perennial river

## Layout Plan:

- Wind turbines
- Met Towers
- Sodar Locations
- Sodar Correlation Locations
- Electrical cabling
- Internal roads
- Electrical Substation
- Project Boundary







# Aberdeen Wind Farm Facility:

Environmental sensitivity map

## Legend

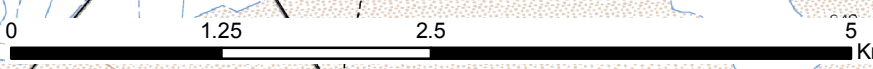
- Existing power line
- Railway Line
- National route
- Regional road
- Main road
- Perennial river
- Non-perennial river
- Project Site boundary

## Layout Plan

- Wind Turbines
- Met Towers
- Sodar Locations
- Sodar Correlation Locations
- Electrical Collection
- Site Roads
- Development
- Electrical Substation

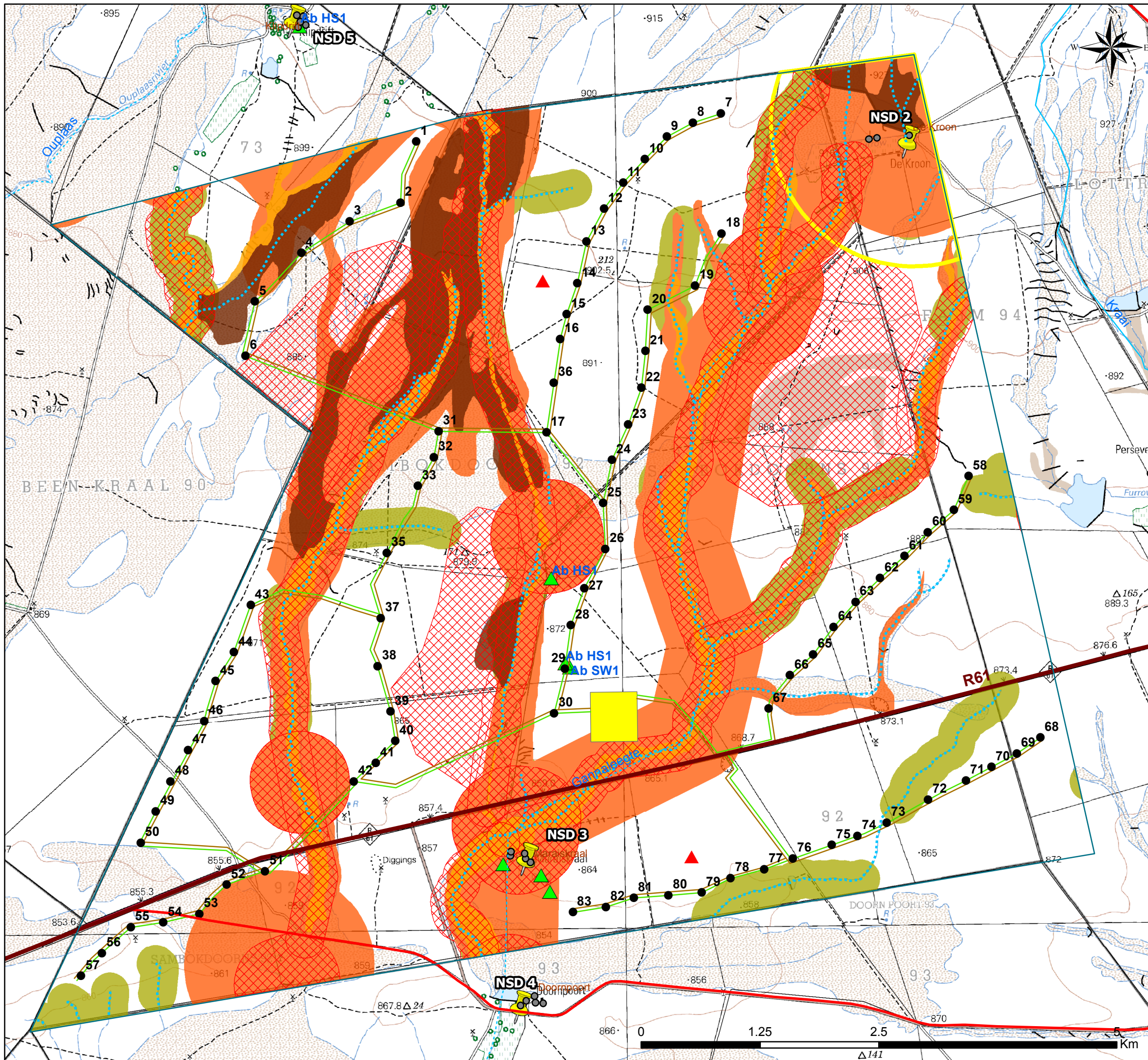
## Environmental sensitivity

- Heritage - historical finds
- Noise sensitive receptors
- Crane Roost buffer
- Avifauna high sensitivity
- Very High ecology sensitivity
- High ecology sensitivity
- High bat sensitivity
- Medium - high bat sensitivity



~25km to ABERDEEN





**Aberdeen Wind Farm Facility:**  
 Revised layout plan taking into account environmental sensitivities raised in the EIA

**Legend**

- Existing power line
- Railway Line
- National route
- Regional road
- Main road
- Perennial river
- Non-perennial river

**Layout Plan**

- Wind Turbines
- Met Towers
- Electrical cabling
- Internal roads
- Electrical Substation

**Environmental sensitivity**

- Heritage - historical finds
- Homesteads/farmsteads (visual receptors)
- Noise sensitive receptors
- Crane Roost buffer
- Avifauna high sensitivity
- Very High ecology sensitivity
- High ecology sensitivity
- High bat sensitivity
- Medium - high bat sensitivity

