

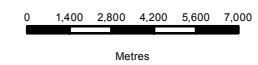
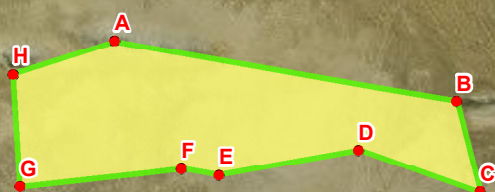
**BIO THERM ENERGY
(PTY) LTD**

DEVELOPMENT AREA

Legend

- Aggeneis Substation
- Development Area
- Khai-ma Local Municipality

Aggeneis Substation



DATA SOURCE:
CHIEF DIRECTORATE: NATIONAL GEO-
SPATIAL INFORMATION

PROJECTION: WGS HARTBEESHOEK 1984
PROJECT TITLE: WIND AND SOLAR RENEWABLES

PROJECT NO: 47579
SCALE: 1:250,000 AT A4 DATE: 25/07/2016
DRAWN BY: SABELO DUBE FIGURE NO: 2
REVIEWED BY: ASHLEA STRONG



DISCLAIMER
The information on this figure was derived from various digital databases available to WSP Environmental (Pty) Ltd. All information is provided "as is" and it must be acknowledged that data, information, and maps are dynamic and in a constant state of maintenance, correction and update. WSP Environmental (Pty) Ltd cannot accept any responsibility for errors, omissions, or positional accuracy where it has not been directly responsible for the production of the data referenced. There are no warranties, expressed or implied, as to the use of this information, including the warranty of merchantability or fitness for a particular purpose. Notification of any errors will be appreciated.

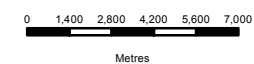
| Label | X | Y |
|-------|-----------|------------|
| A | 18.885354 | -29.3585 |
| B | 18.987076 | -29.376346 |
| C | 18.993976 | -29.403234 |
| D | 18.916287 | -29.398237 |
| E | 18.857157 | -29.401687 |
| F | 18.855134 | -29.368256 |
| G | 18.905222 | -29.396333 |
| H | 18.957927 | -29.39098 |

Source: Esri, DigitalGlobe, GeoEye, Earthstar Geographics, CNES/Airbus DS, USDA, USGS, AEX, Getmapping, Aerogrid, IGN, IGP, swisstopo, and the GIS User Community

**BIO THERM ENERGY
(PTY) LTD**
LOCALITY OF
ALTERNATIVE SITES

Legend

- Points
- Substation Locations
- N14
- Transmission Lines
- Water Pipeline Route Option 1
- Water Pipeline Route Option 2
- Alternative 2
- Alternative 1
- Khai-ma Local Municipality



DATA SOURCE:

CHIEF DIRECTORATE: NATIONAL GEO-SPATIAL INFORMATION

PROJECTION: WGS 19 HARTEBESHOEK 94

PROJECT TITLE: WIND AND SOLAR RENEWABLES

PROJECT NO: 47579

SCALE: 1:250,000 AT A4 DATE: 25/07/2016

DRAWN BY: SABELO DUBE FIGURE NO: 1

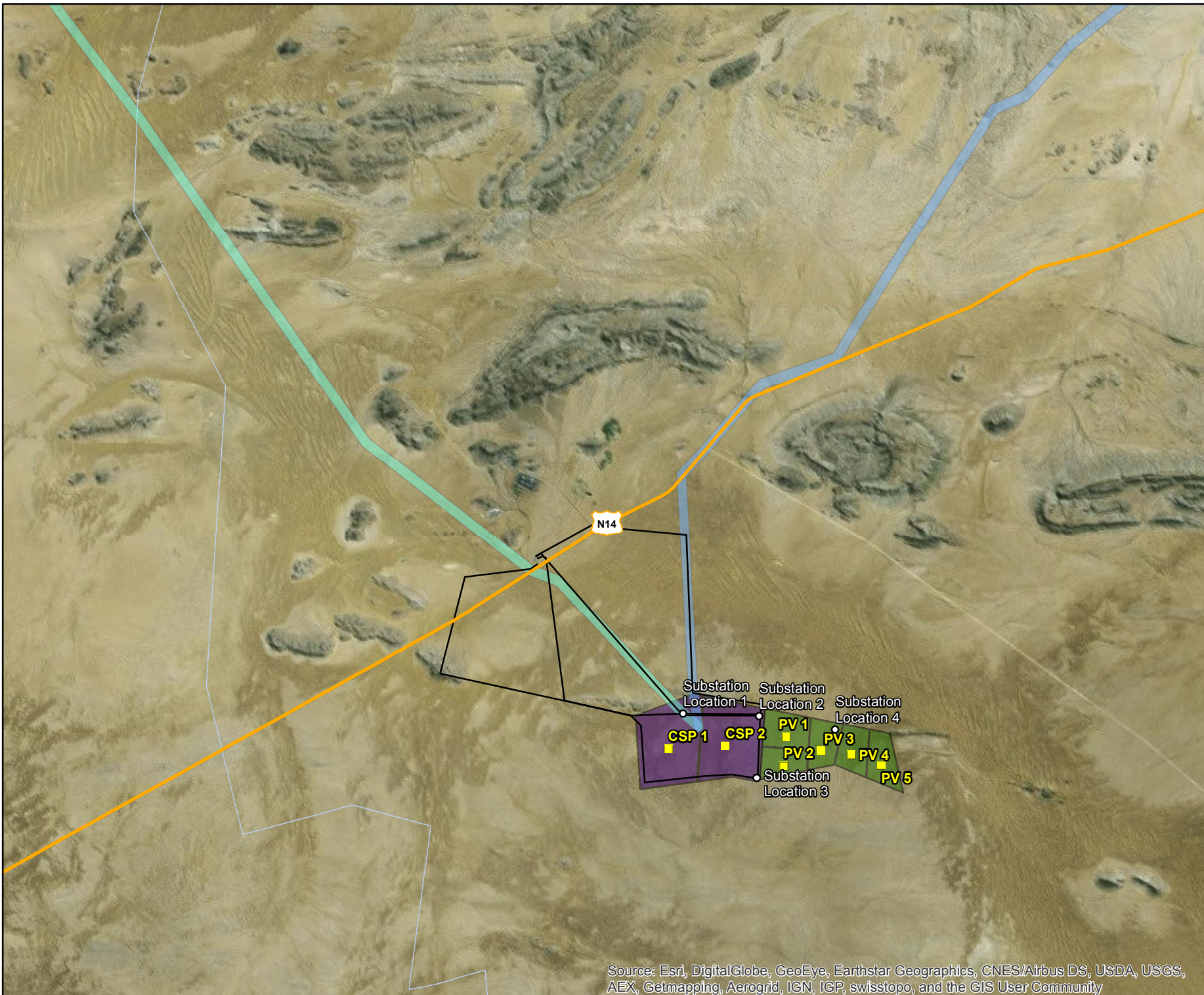
REVIEWED BY: ASHLEA STRONG



DISCLAIMER

The information on this figure was derived from various digital databases available to WSP Environmental (Pty) Ltd. All information is provided "as is" and it must be acknowledged that data, information, and maps are dynamic and in a constant state of maintenance, correction and update. WSP Environmental (Pty) Ltd cannot accept any responsibility for errors, omissions, or positional accuracy where it has not been directly responsible for the production of the data referenced. There are no warranties, expressed or implied, as to the use of this information, including the warranty of merchantability or fitness for a particular purpose. Notification of any errors will be appreciated.

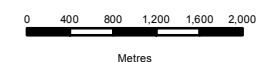
Source: Esri, DigitalGlobe, GeoEye, Earthstar Geographics, CNES/Airbus DS, USDA, USGS, AEX, Getmapping, Aerogrid, IGN, IGP, swisstopo, and the GIS User Community



**BIO THERM ENERGY
(PTY) LTD**
LAYOUT OF LETSOAI
& ENAMANDLA

Legend

- Substation Locations
- Points
- Transmission Lines
- Letsoai CSP Sites
- Enamandla PV Sites
- ▭ Farm Portions
- Water Pipeline Route Option 1
- Water Pipeline Route Option 2



DATA SOURCE:
CHIEF DIRECTORATE: NATIONAL GEO-
SPATIAL INFORMATION

PROJECTION: WGS 19 HARTEBEEHOCK 94

PROJECT TITLE: WIND AND SOLAR RENEWABLES

PROJECT NO: 47579

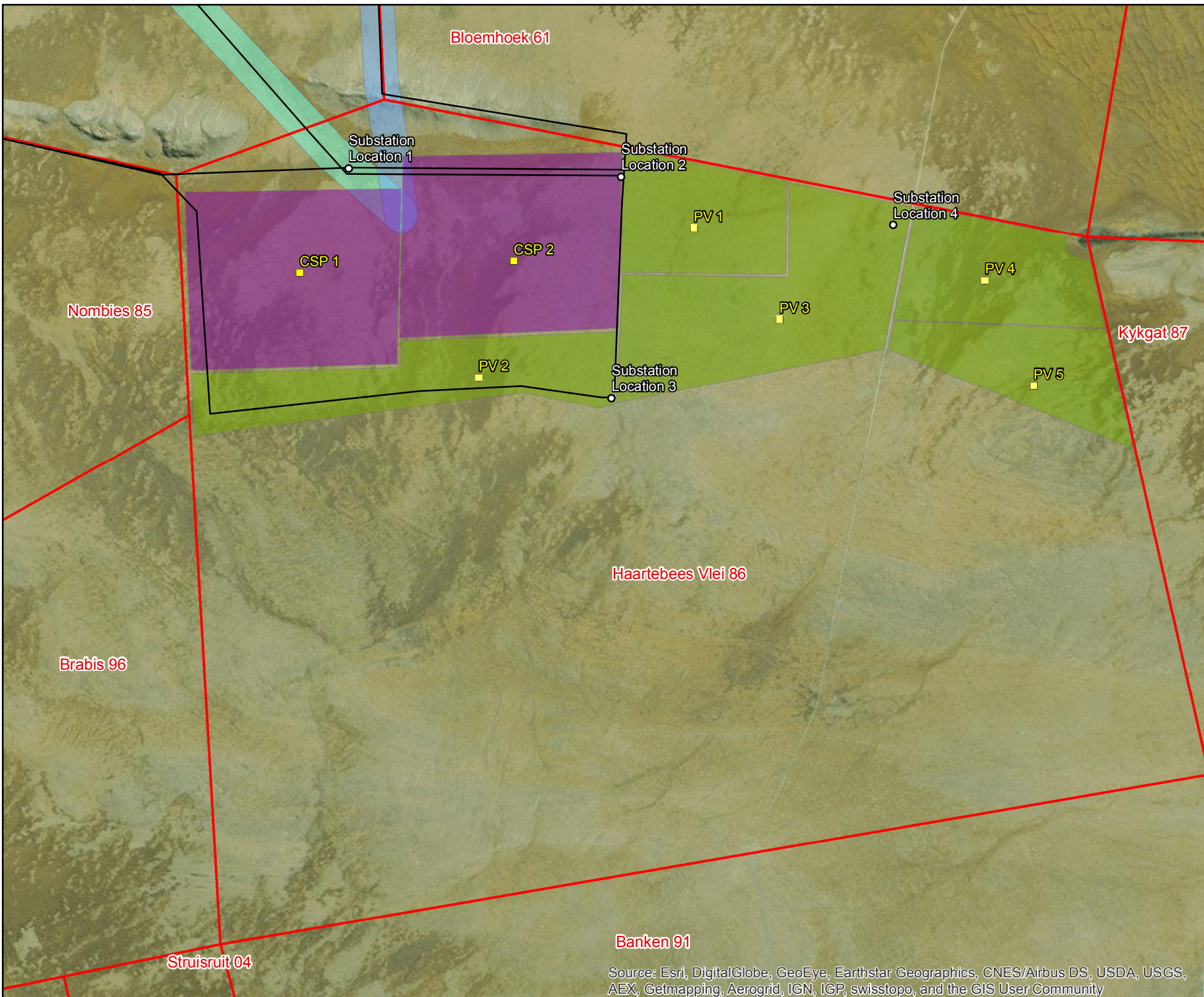
SCALE: 1:70,000 AT A4 DATE: 11/08/2016

DRAWN BY: SABELO DUBE FIGURE NO: 15

REVIEWED BY: ASHLEA STRONG



DISCLAIMER
The information on this figure was derived from various digital databases available to WSP Environmental (Pty) Ltd. All information is provided "as is" and it must be acknowledged that data, information, and maps are dynamic and in a constant state of maintenance, correction and update. WSP Environmental (Pty) Ltd cannot accept any responsibility for errors, omissions, or positional accuracy where it has not been directly responsible for the production of the data referenced. There are no warranties, expressed or implied, as to the use of this information, including the warranty of merchantability or fitness for a particular purpose. Notification of any errors will be appreciated.



Banken 91

Source: Esri, DigitalGlobe, GeoEye, Earthstar Geographics, CNES/Airbus DS, USDA, USGS, AEX, Getmapping, Aerogrid, IGN, IGP, swisstopo, and the GIS User Community

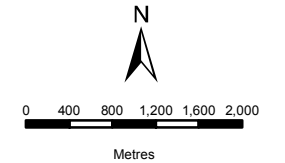
BIO THERM ENERGY (PTY) LTD
LAYOUT OF LETSOAI AND ENAMANDLA

Legend

- Points
- Substation Locations
- Letsoai CSP Sites
- Enamandla PV Sites
- ▭ Farm Portions

Powerlines

- Option 1
- Option 2
- Option 3
- Option 4
- Option 5



DATA SOURCE:
 CHIEF DIRECTORATE: NATIONAL GEO-SPATIAL INFORMATION

PROJECTION: WGS 19 HARTEBEEHOCK 94

PROJECT TITLE: WIND AND SOLAR RENEWABLES

PROJECT NO: 47579

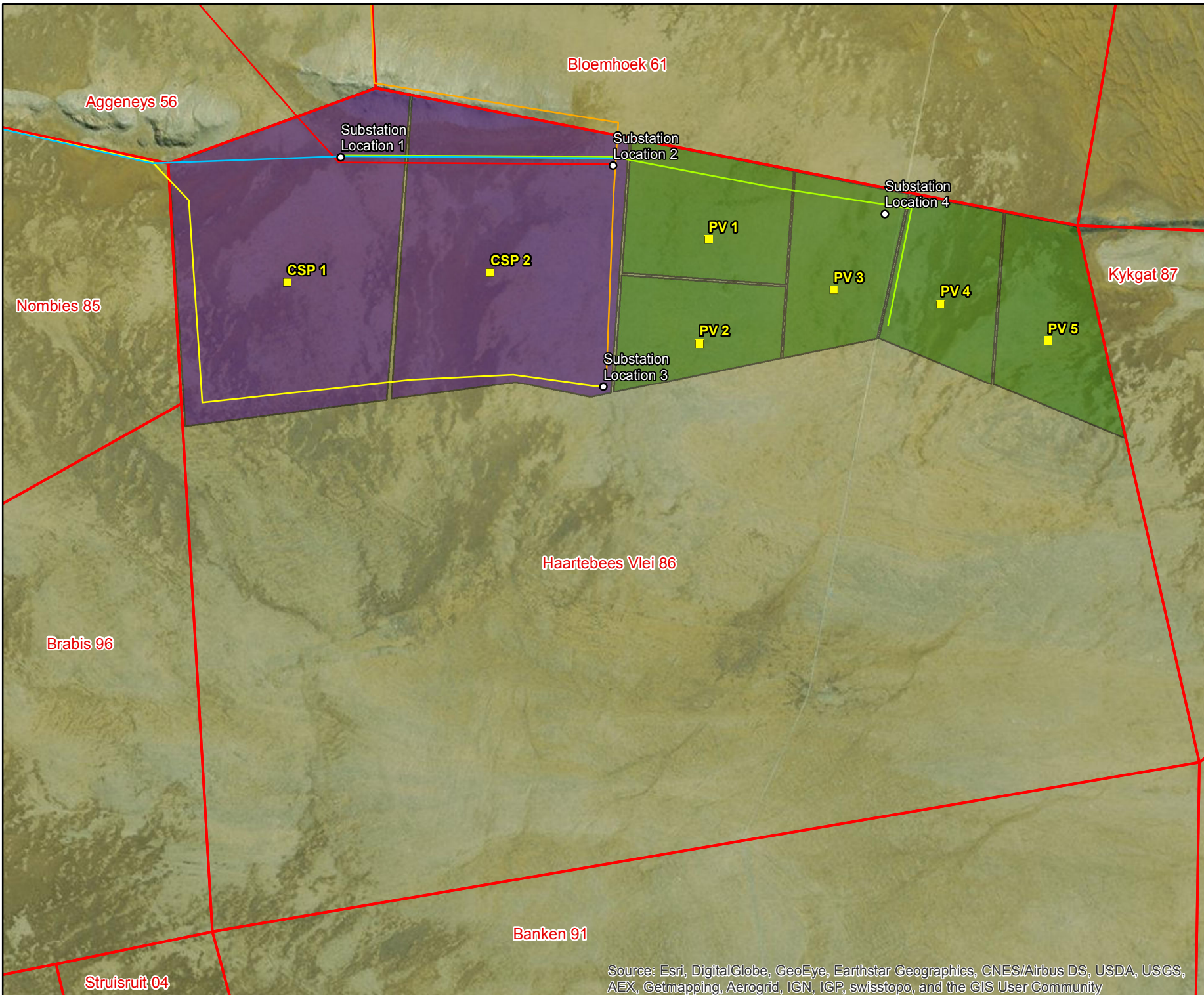
SCALE: 1:70,000 AT A4 DATE: 18/08/2016

DRAWN BY: SABELO DUBE FIGURE NO: 15

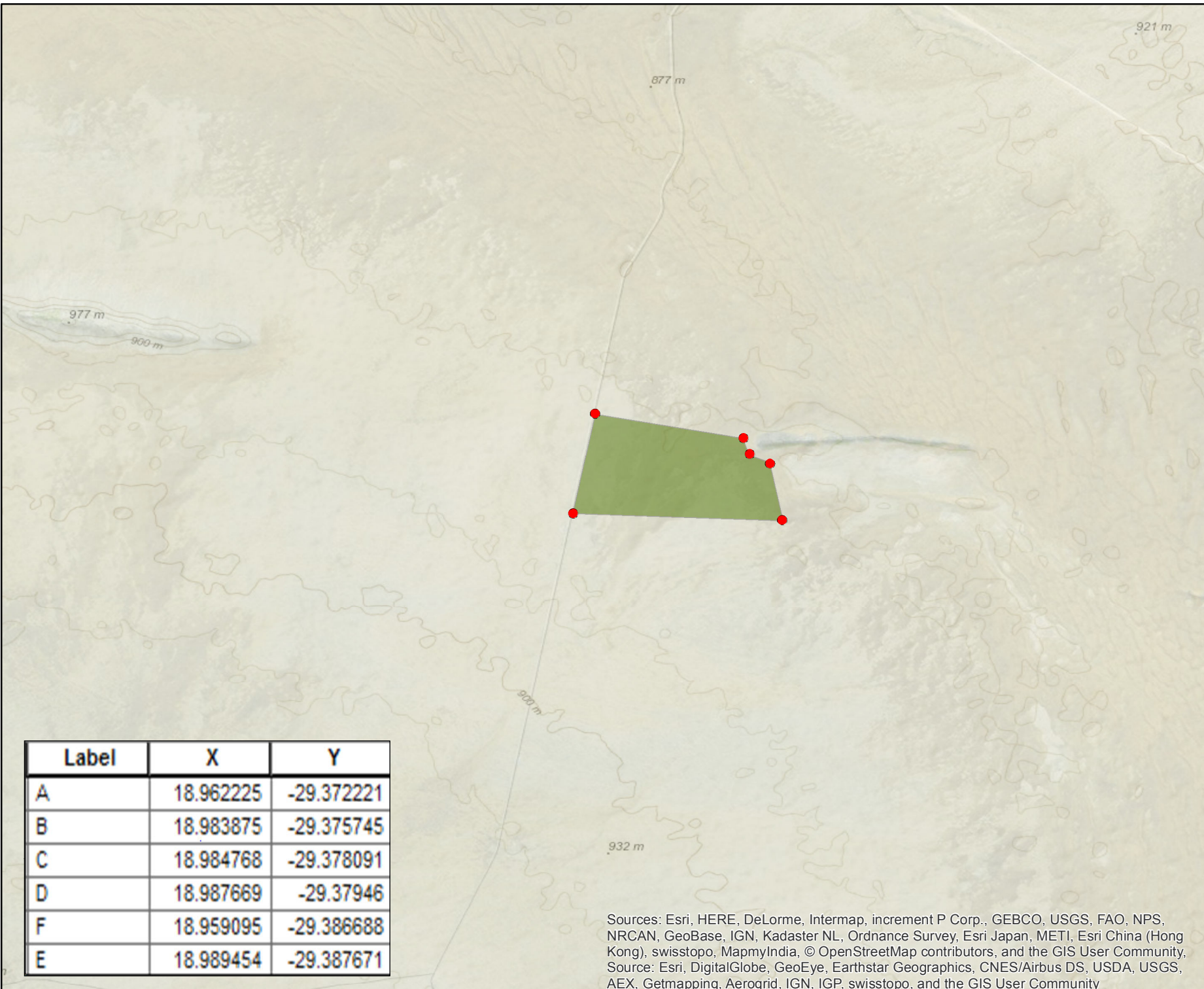
REVIEWED BY: ASHLEA STRONG



DISCLAIMER
 The information on this figure was derived from various digital databases available to WSP Environmental (Pty) Ltd. All information is provided "as is" and it must be acknowledged that data, information, and maps are dynamic and in a constant state of maintenance, correction and update. WSP Environmental (Pty) Ltd cannot accept any responsibility for errors, omissions, or positional accuracy where it has not been directly responsible for the production of the data referenced. There are no warranties, expressed or implied, as to the use of this information, including the warranty of merchantability or fitness for a particular purpose. Notification of any errors will be appreciated.

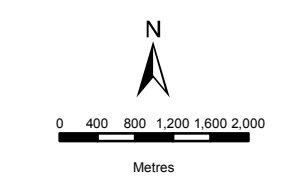


Source: Esri, DigitalGlobe, GeoEye, Earthstar Geographics, CNES/Airbus DS, USDA, USGS, AEX, Getmapping, Aerogrid, IGN, IGP, swisstopo, and the GIS User Community



BIO THERM ENERGY (PTY) LTD
ENAMANDLA SITE 4

- Legend**
- Enamandla Site 4 Points
 - Enamandla Site 4



DATA SOURCE:
CHIEF DIRECTORATE: NATIONAL GEO-SPATIAL INFORMATION

PROJECTION: WGS 19 HARTEBEE SHOEK 94
PROJECT TITLE: WIND AND SOLAR RENEWABLES

PROJECT NO: 47579
SCALE: 1:80,000 AT A4 DATE: 25/07/2016
DRAWN BY: SABELO DUBE FIGURE NO: 5
REVIEWED BY: ASHLEA STRONG



DISCLAIMER
The information on this figure was derived from various digital databases available to WSP Environmental (Pty) Ltd. All information is provided "as is" and it must be acknowledged that data, information, and maps are dynamic and in a constant state of maintenance, correction and update. WSP Environmental (Pty) Ltd cannot accept any responsibility for errors, omissions, or positional accuracy where it has not been directly responsible for the production of the data referenced. There are no warranties, expressed or implied, as to the use of this information, including the warranty of merchantability or fitness for a particular purpose. Notification of any errors will be appreciated.

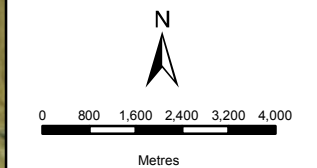
| Label | X | Y |
|-------|-----------|------------|
| A | 18.962225 | -29.372221 |
| B | 18.983875 | -29.375745 |
| C | 18.984768 | -29.378091 |
| D | 18.987669 | -29.37946 |
| F | 18.959095 | -29.386688 |
| E | 18.989454 | -29.387671 |

Sources: Esri, HERE, DeLorme, Intermap, increment P Corp., GEBCO, USGS, FAO, NPS, NRCAN, GeoBase, IGN, Kadaster NL, Ordnance Survey, Esri Japan, METI, Esri China (Hong Kong), swisstopo, MapmyIndia, © OpenStreetMap contributors, and the GIS User Community, Source: Esri, DigitalGlobe, GeoEye, Earthstar Geographics, CNES/Airbus DS, USDA, USGS, AEX, Getmapping, Aerogrid, IGN, IGP, swisstopo, and the GIS User Community

**BIO THERM ENERGY
(PTY) LTD**
SENSITIVITY MAP
 ENAMANDLA SITE 4

Legend

- Letsoai Substations
- Homesteads
- Letsoai Powerline Options
- Letsoai Ridgelines
- Heritage Sensitivities
- Gamsberg Inselberg
- Enamandla Site 4
- ▭ Letsoai Enamandla Boundaries
- Homesteads Buffer 400m
- Loop10Rd Buffer 500m
- N14 Buffer 3km
- Letsoai Substations Footprints



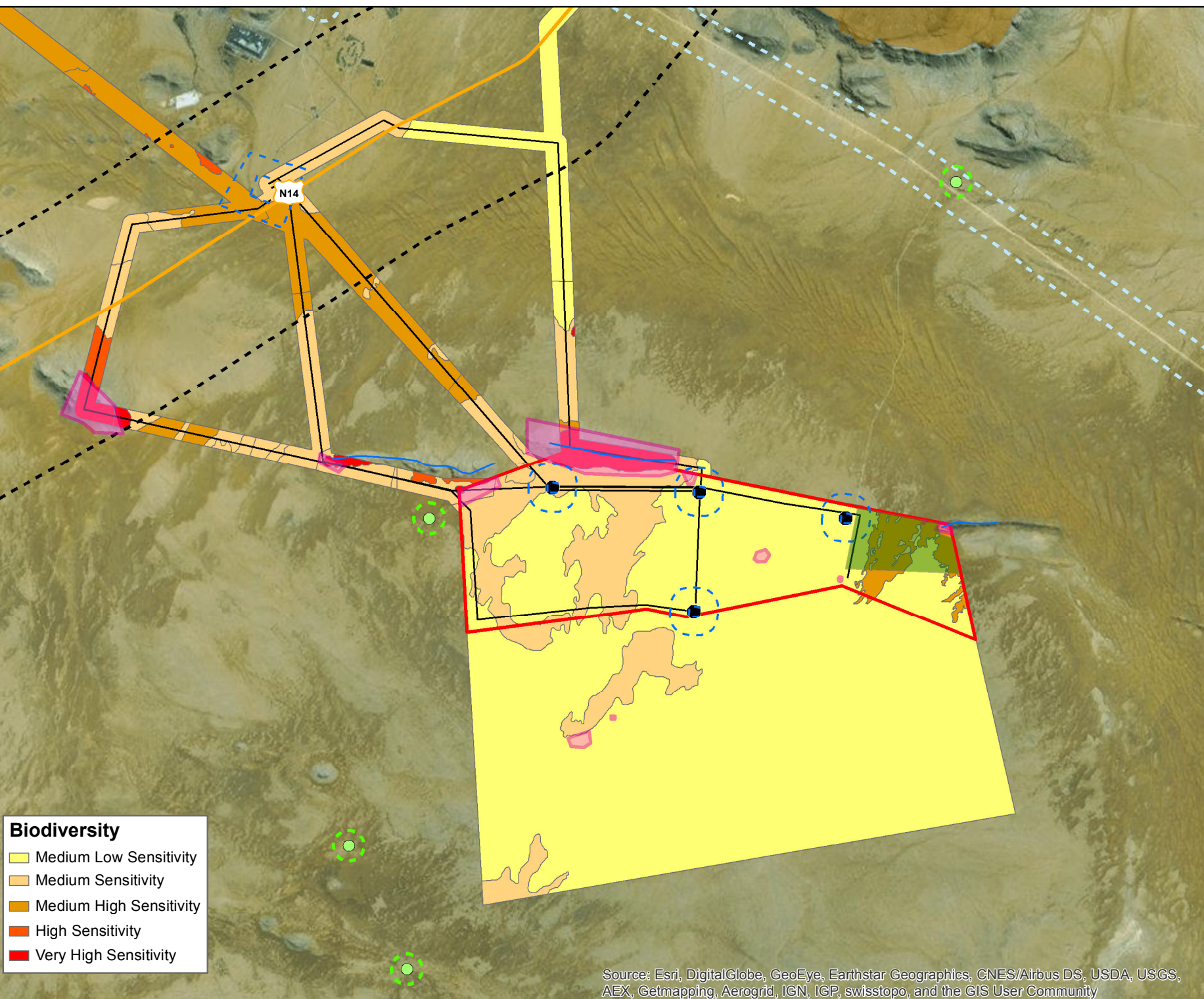
DATA SOURCE:
 CHIEF DIRECTORATE: NATIONAL GEO-SPATIAL INFORMATION

PROJECTION: WGS 19 HARTEBEE SHOEK 94
 PROJECT TITLE: WIND AND SOLAR RENEWABLES

PROJECT NO: 47579
 SCALE: 1:130,000 AT A4 DATE: 25/07/2016
 DRAWN BY: SABELO DUBE FIGURE NO: 7
 REVIEWED BY: ASHLEA STRONG



DISCLAIMER
 The information on this figure was derived from various digital databases available to WSP Environmental (Pty) Ltd. All information is provided "as is" and it must be acknowledged that data, information, and maps are dynamic and in a constant state of maintenance, correction and update. WSP Environmental (Pty) Ltd cannot accept any responsibility for errors, omissions, or positional accuracy where it has not been directly responsible for the production of the data referenced. There are no warranties, expressed or implied, as to the use of this information, including the warranty of merchantability or fitness for a particular purpose. Notification of any errors will be appreciated.



Biodiversity

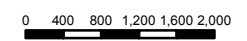
- Medium Low Sensitivity
- Medium Sensitivity
- Medium High Sensitivity
- High Sensitivity
- Very High Sensitivity

Source: Esri, DigitalGlobe, GeoEye, Earthstar Geographics, CNES/Airbus DS, USDA, USGS, AEX, Getmapping, Aerogrid, IGN, IGP, swisstopo, and the GIS User Community

**BIO THERM ENERGY
(PTY) LTD**
ENAMANDLA SITE 4

Legend

- Site Points
- Enamandla Site 4



Metres

DATA SOURCE:
CHIEF DIRECTORATE: NATIONAL GEO-
SPATIAL INFORMATION

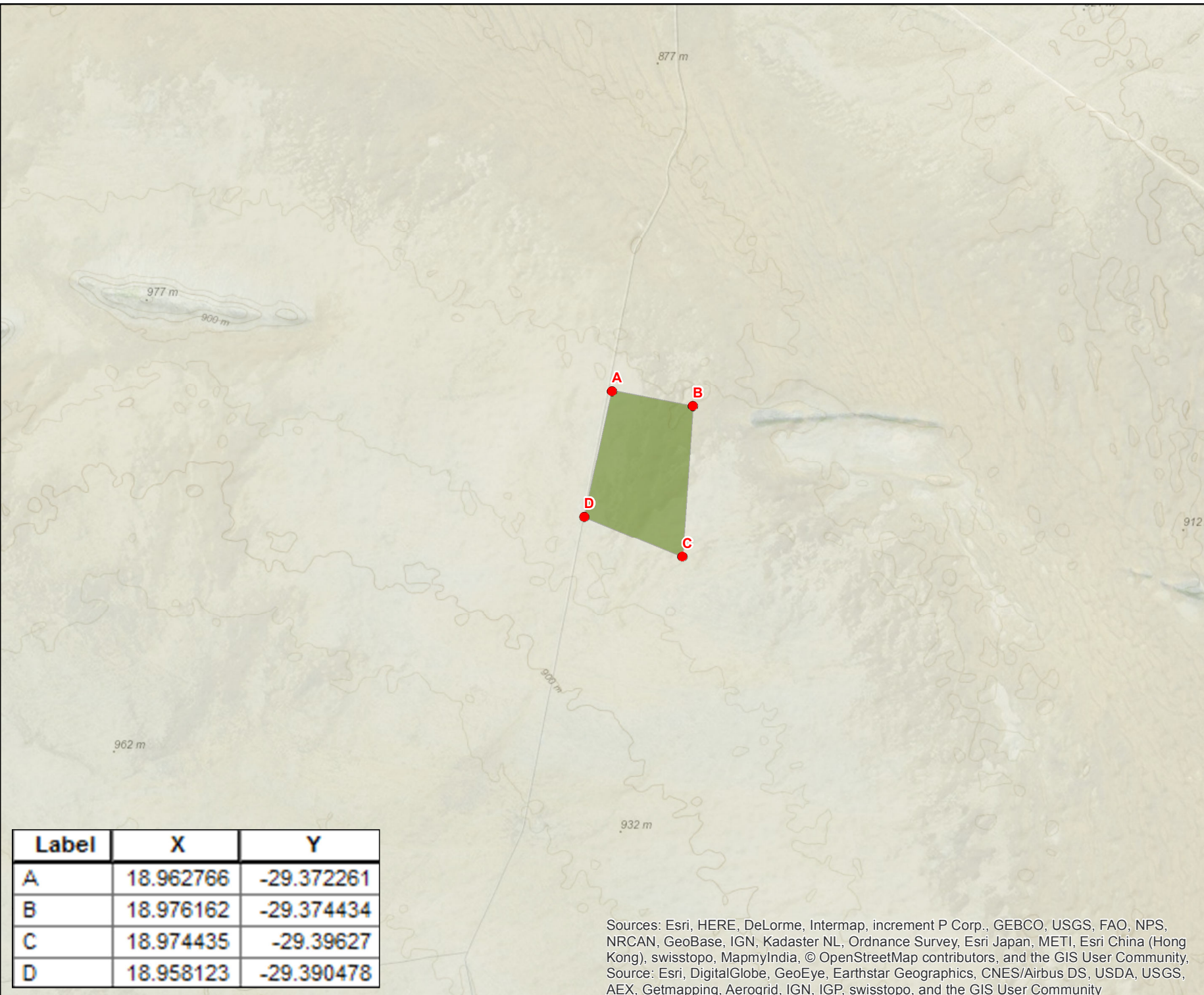
PROJECTION: WGS 19 HARTEBEEHOCK 94
PROJECT TITLE: WIND AND SOLAR RENEWABLES

PROJECT NO: 47579
SCALE: 1:80,000 AT A4 DATE: 25/07/2016

DRAWN BY: SABELO DUBE FIGURE NO: 5
REVIEWED BY: ASHLEA STRONG



DISCLAIMER
The information on this figure was derived from various digital databases available to WSP Environmental (Pty) Ltd. All information is provided "as is" and it must be acknowledged that data, information, and maps are dynamic and in a constant state of maintenance, correction and update. WSP Environmental (Pty) Ltd cannot accept any responsibility for errors, omissions, or positional accuracy where it has not been directly responsible for the production of the data referenced. There are no warranties, expressed or implied, as to the use of this information, including the warranty of merchantability or fitness for a particular purpose. Notification of any errors will be appreciated.



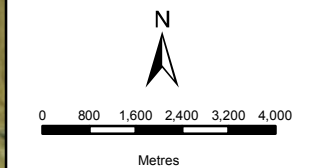
| Label | X | Y |
|-------|-----------|------------|
| A | 18.962766 | -29.372261 |
| B | 18.976162 | -29.374434 |
| C | 18.974435 | -29.39627 |
| D | 18.958123 | -29.390478 |

Sources: Esri, HERE, DeLorme, Intermap, increment P Corp., GEBCO, USGS, FAO, NPS, NRCAN, GeoBase, IGN, Kadaster NL, Ordnance Survey, Esri Japan, METI, Esri China (Hong Kong), swisstopo, MapmyIndia, © OpenStreetMap contributors, and the GIS User Community, Source: Esri, DigitalGlobe, GeoEye, Earthstar Geographics, CNES/Airbus DS, USDA, USGS, AEX, Getmapping, Aerogrid, IGN, IGP, swisstopo, and the GIS User Community

**BIO THERM ENERGY
(PTY) LTD**
SENSITIVITY MAP
 ENAMANDLA SITE 4

Legend

- Letsoai Substations
- Homesteads
- Letsoai Powerline Options
- Letsoai Ridgelines
- Heritage Sensitivities
- Gamsberg Inselberg
- Enamandla Site 4
- ▭ Letsoai Enamandla Boundaries
- Homesteads Buffer 400m
- Loop10Rd Buffer 500m
- N14 Buffer 3km
- Letsoai Substations Footprints



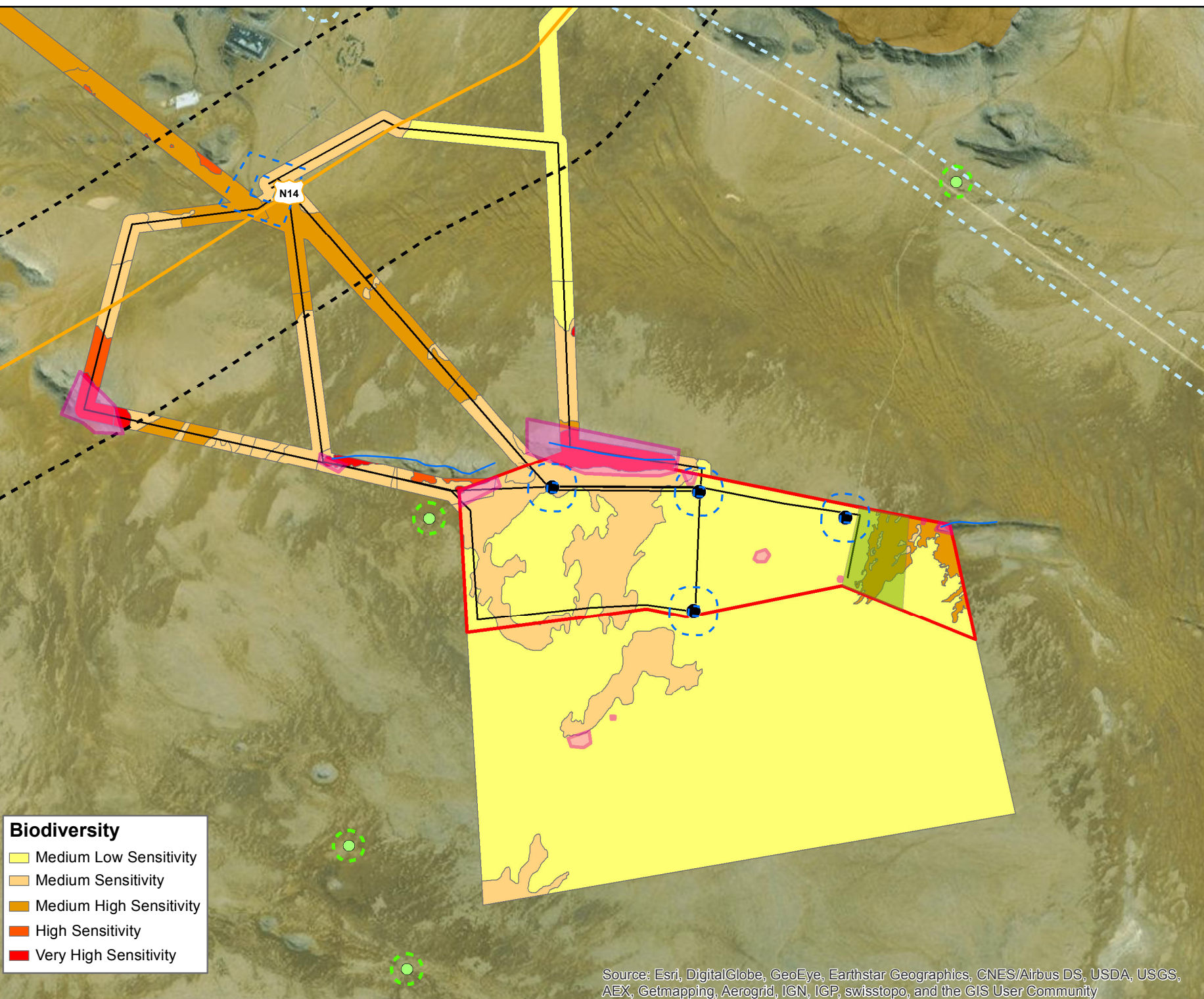
DATA SOURCE:
 CHIEF DIRECTORATE: NATIONAL GEO-SPATIAL INFORMATION

PROJECTION: WGS 19 HARTEBEE SHOEK 94
 PROJECT TITLE: WIND AND SOLAR RENEWABLES

PROJECT NO: 47579
 SCALE: 1:130,000 AT A4 DATE: 25/07/2016
 DRAWN BY: SABELO DUBE FIGURE NO: 7
 REVIEWED BY: ASHLEA STRONG



DISCLAIMER
 The information on this figure was derived from various digital databases available to WSP Environmental (Pty) Ltd. All information is provided "as is" and it must be acknowledged that data, information, and maps are dynamic and in a constant state of maintenance, correction and update. WSP Environmental (Pty) Ltd cannot accept any responsibility for errors, omissions, or positional accuracy where it has not been directly responsible for the production of the data referenced. There are no warranties, expressed or implied, as to the use of this information, including the warranty of merchantability or fitness for a particular purpose. Notification of any errors will be appreciated.



Biodiversity

- Medium Low Sensitivity
- Medium Sensitivity
- Medium High Sensitivity
- High Sensitivity
- Very High Sensitivity

Source: Esri, DigitalGlobe, GeoEye, Earthstar Geographics, CNES/Airbus DS, USDA, USGS, AEX, Getmapping, Aerogrid, IGN, IGP, swisstopo, and the GIS User Community