

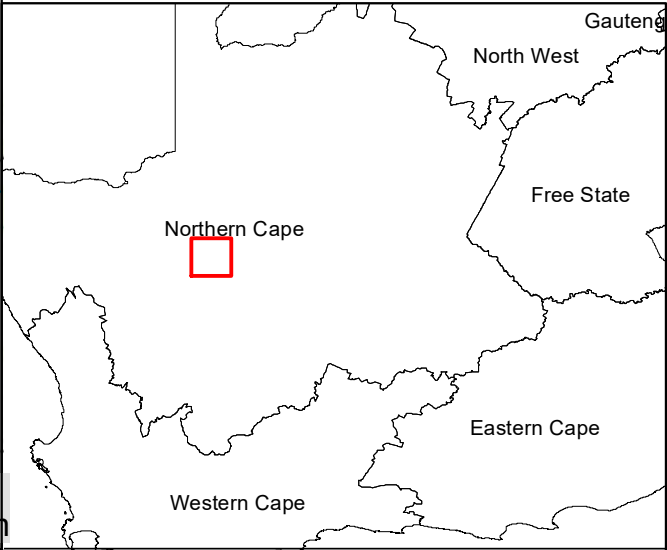
# Kotulo Tsatsi Energy PV3, Northern Cape

## Locality Map

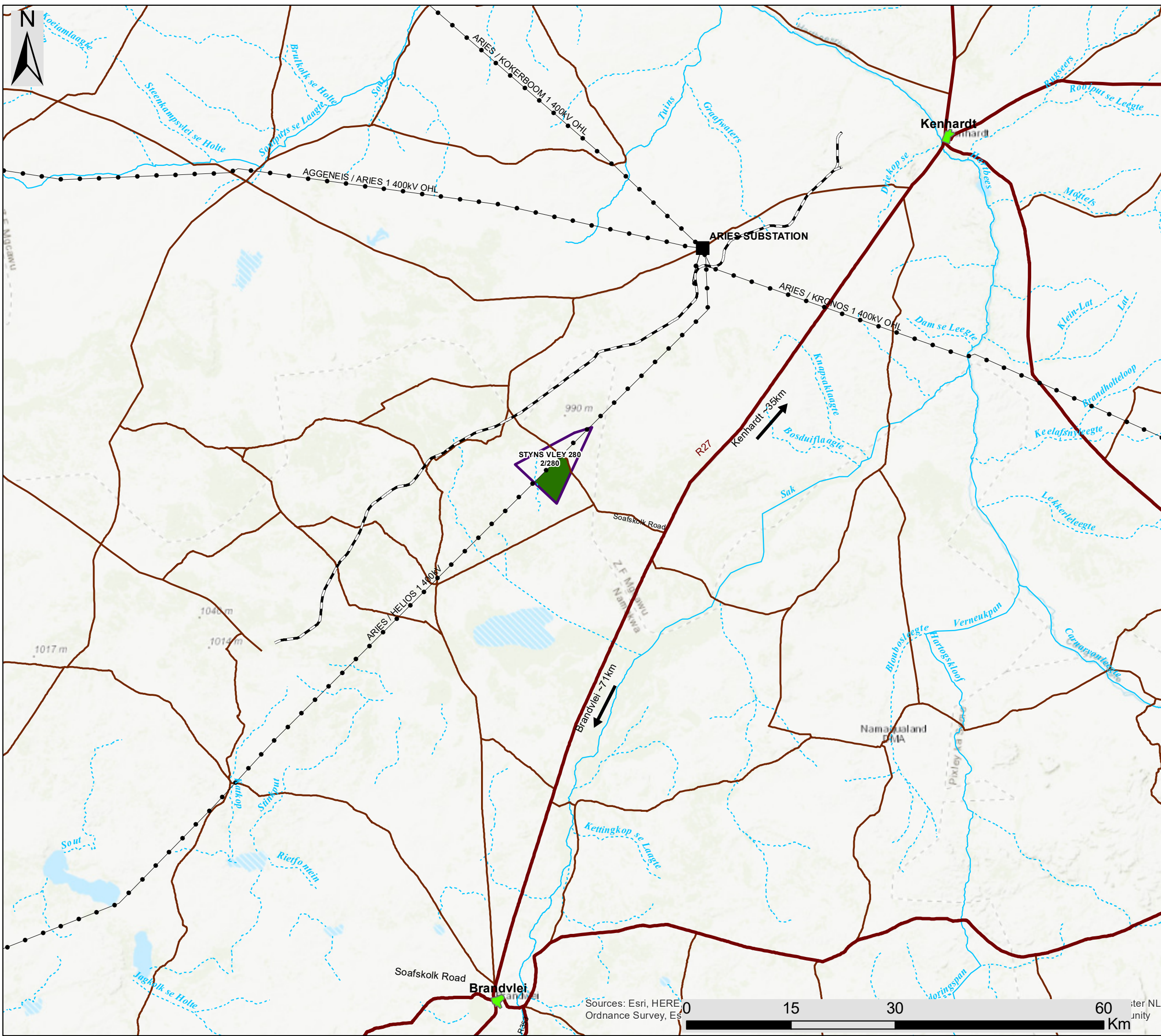
### Legend

- Eskom substation
- Existing Power Line
- Railway
- Regional road
- Main road
- Perennial river
- Non-perennial river
- Farm portions
- Project Site
- Development Area

Scale: 1: 155 000  
 Projection: WGS\_1984  
 Map Ref: Kotulo Tsatsi Energy PV3 - Locality



Sources: Esri, HERE, Ordnance Survey, Esri



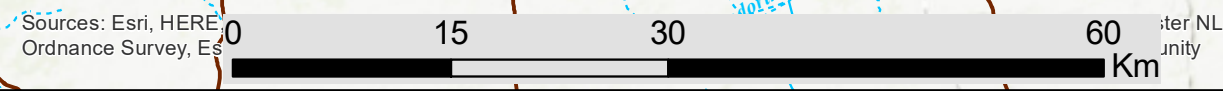
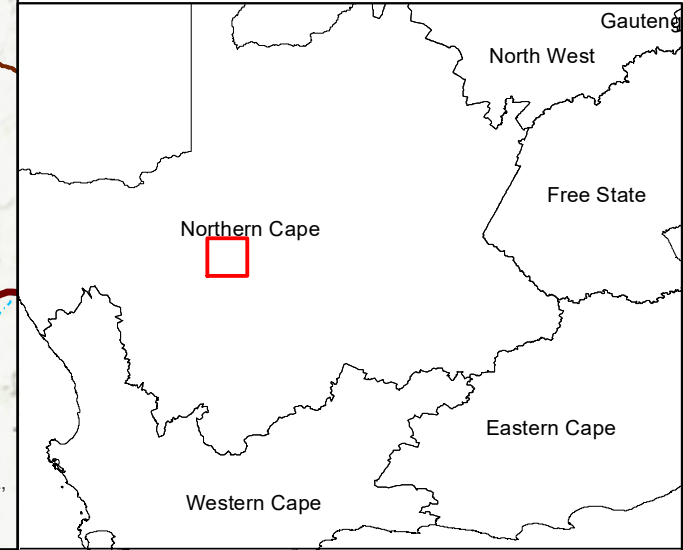
# Kotulo Tsatsi Energy PV3, Northern Cape

## Regional Map

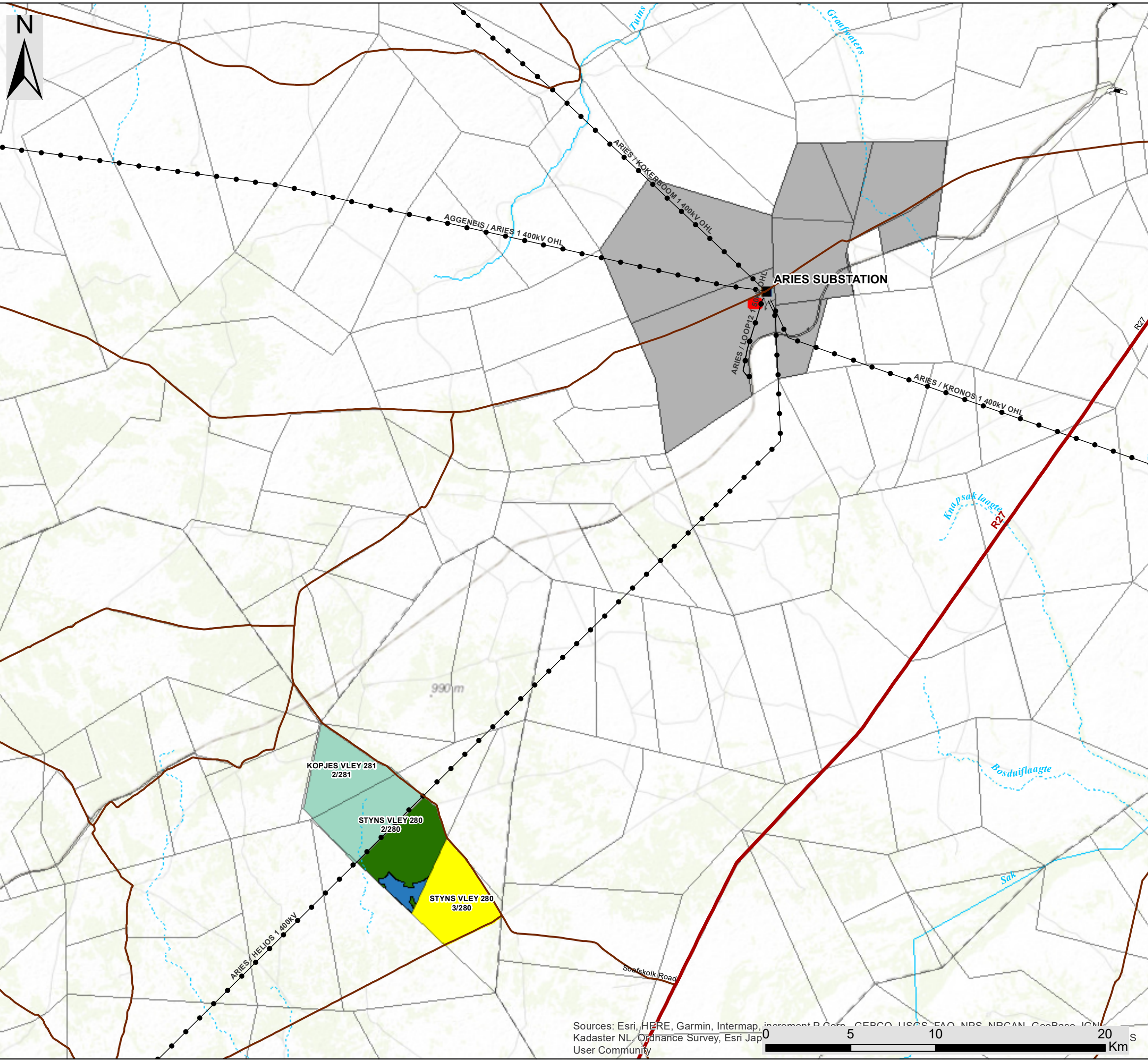
### Legend

- Towns
- Eskom substation
- Existing Power Line
- Railway
- Regional road
- Main road
- Perennial river
- Non-perennial river
- Project Site
- Development Area

Scale: 1: 155 000  
 Projection: WGS\_1984  
 Map Ref: Kotulo Tsatsi Energy PV3 - Locality



Sources: Esri, HERE, Ordnance Survey, Esri



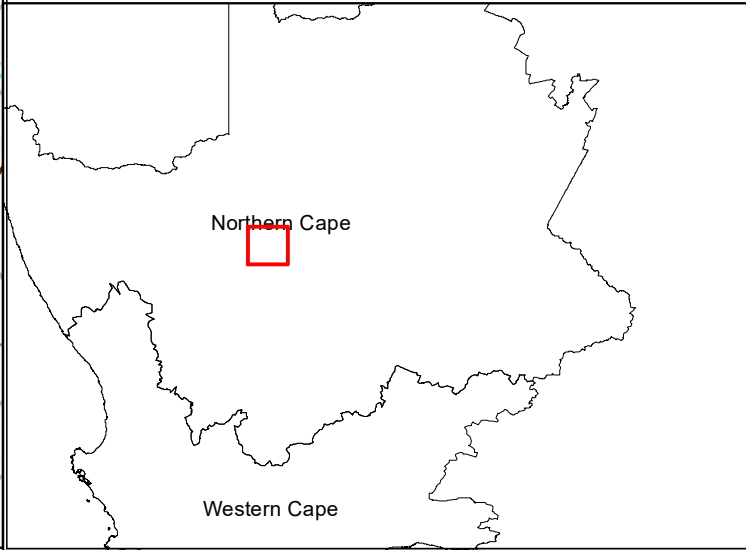
# Kotulo Tsatsi Energy PV3, Northern Cape

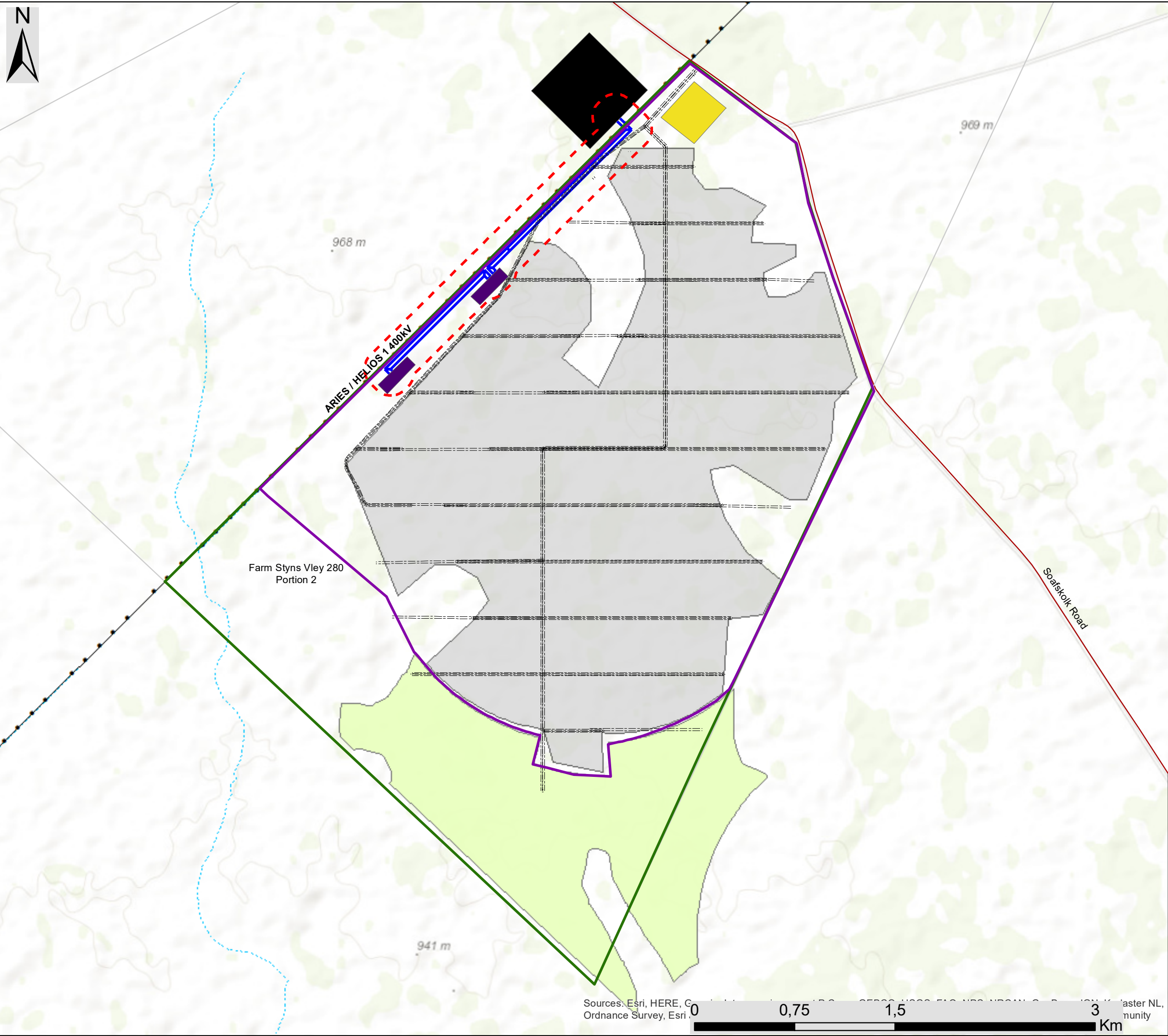
Cumulative Map

## Legend

- Regional road
  - Main road
  - Existing Power Line
  - Railway
  - Farm portions
  - Eskom substation
  - Perennial river
  - Non-perennial river
  - Kotulo Tsatsi Energy PV3 Development Area
- Other solar PV developments:**
- Aries Solar PV (Operational)
  - Kotulo Tsatsi Energy PV1 (Authorised)
  - Kotulo Tsatsi Energy PV2 (Authorised)
  - Kotulo Tsatsi Energy CSP3 (Authorised)
  - Various authorised solar PV facilities

Scale: 1: 195 800  
 Projection: WGS1984  
 Map Ref: Kotulo Tsatsi Energy PV3 -





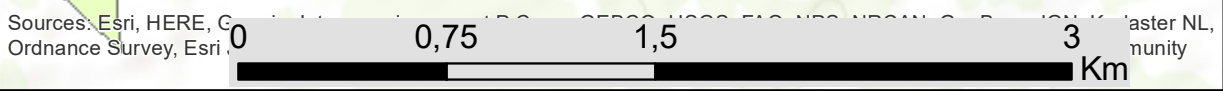
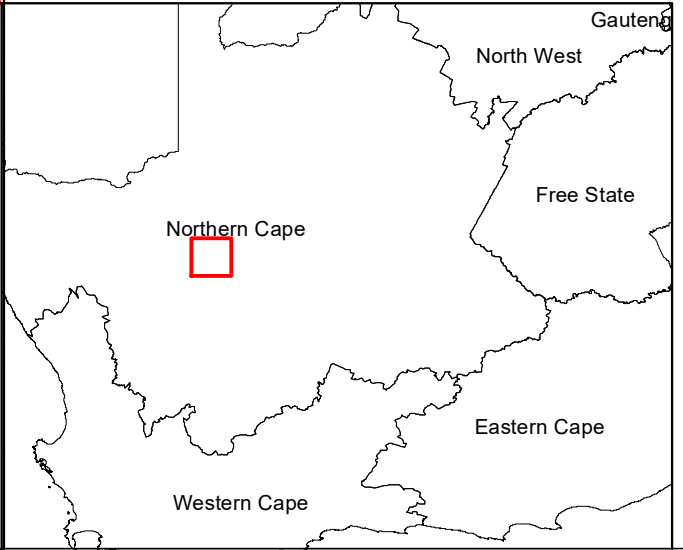
# Kotulo Tsatsi Energy PV3, Northern Cape

## Layout Map

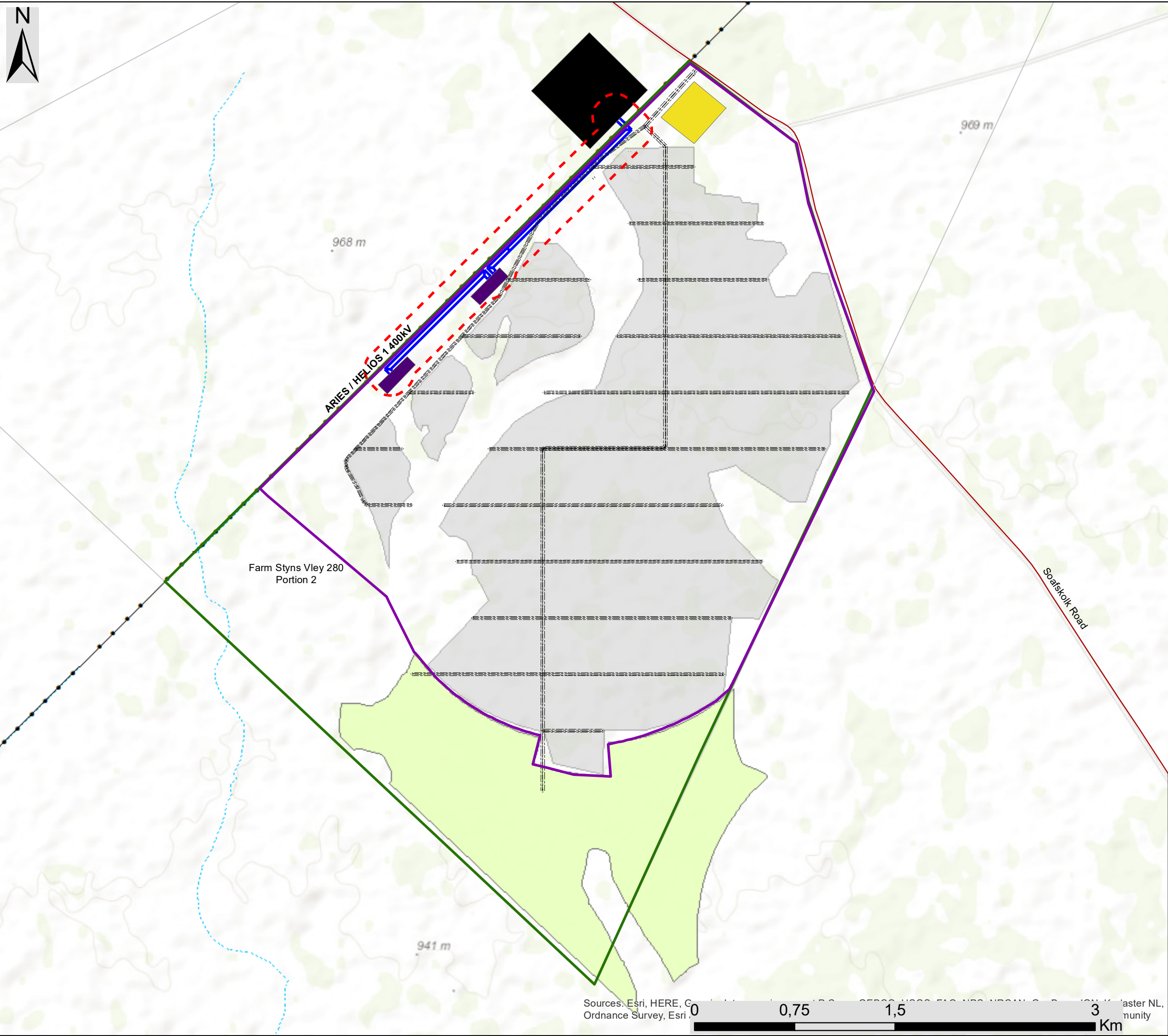
### Legend

- - - Non-perennial river
  - Existing Power Line
  - Roads
  - Development Footprint
  - Development Area
  - Farm Portion
  - 400 kV substation (authorised)
  - Kotulo Tsatsi Energy PV 2 (Authorised)
- ### Facility Layout
- PV Array
  - Substation and BESS Hubs
  - Grid Connection Corridor (300m assessed area)
  - 132 kV Power Lines
  - Internal and Access Roads
  - O&M and Laydown Area Hub

Scale: 1: 28 000  
 Projection: WGS 1984  
 Map Ref: Kotulo Tsatsi Energy PV3



Sources: Esri, HERE, G...  
 Ordnance Survey, Esri...



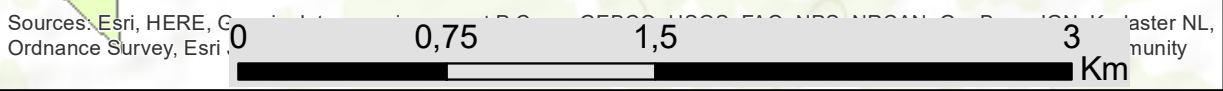
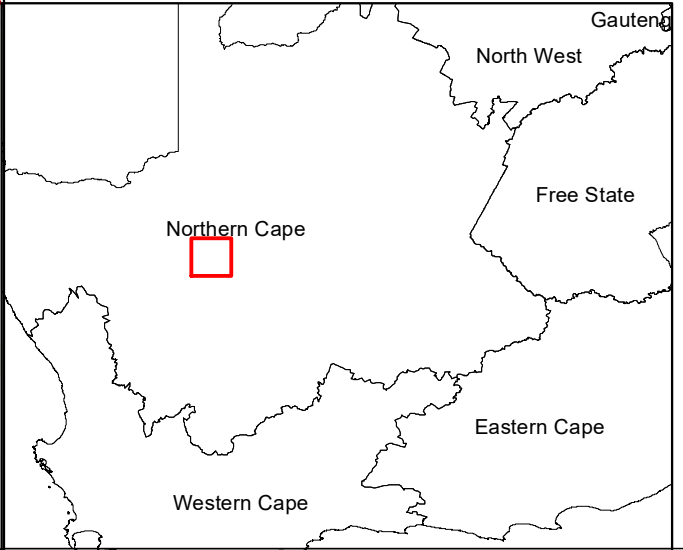
# Kotulo Tsatsi Energy PV3, Northern Cape

Optimised Layout Map

## Legend

- - - - Non-perennial river
  - - ● Existing Power Line
  - Roads
  - Farm Portion
  - 400 kV substation (authorised)
  - Kotulo Tsatsi Energy PV 2 (Authorised)
  - Development Footprint
  - Development Area
- ### Facility Layout
- Optimised PV3 Array
  - Substation and BESS Hubs
  - Grid Connection Corridor (300m assessed area)
  - 132 kV Power Lines
  - Internal and Access Roads
  - O&M and Laydown Area Hub

Scale: 1: 28 000  
 Projection: WGS\_1984  
 Map Ref: Kotulo Tsatsi Energy PV3



Sources: Esri, HERE, G...  
 Ordnance Survey, Esri...

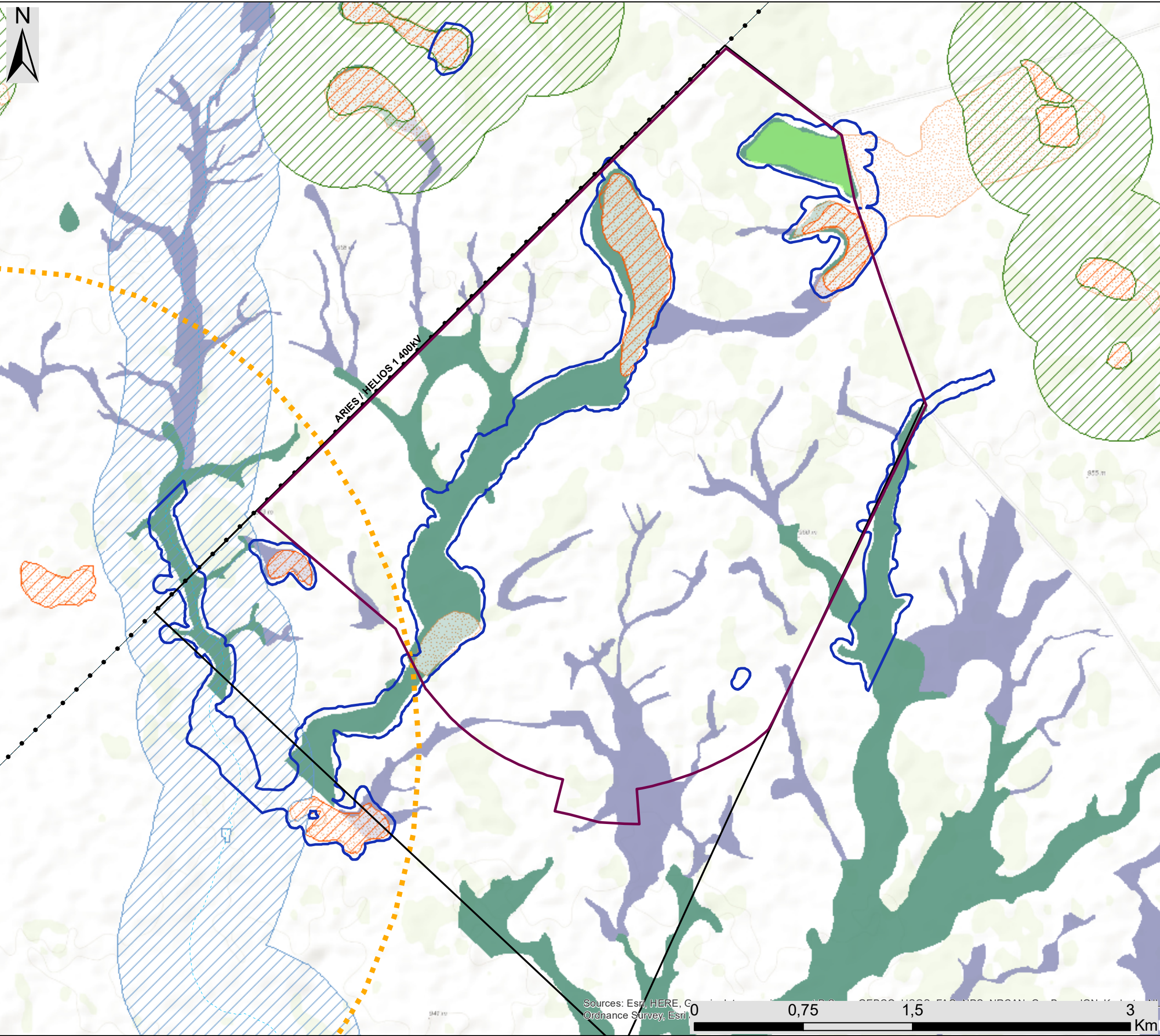


# Kotulo Tsatsi Energy PV3, Northern Cape

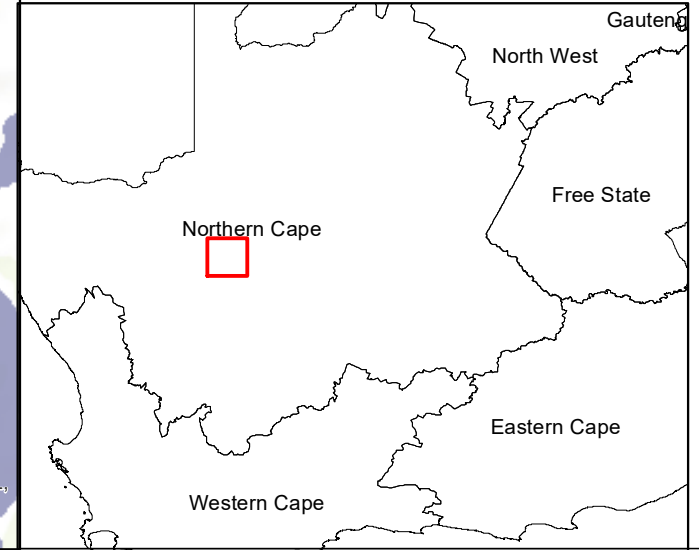
## Sensitivity Map

### Legend

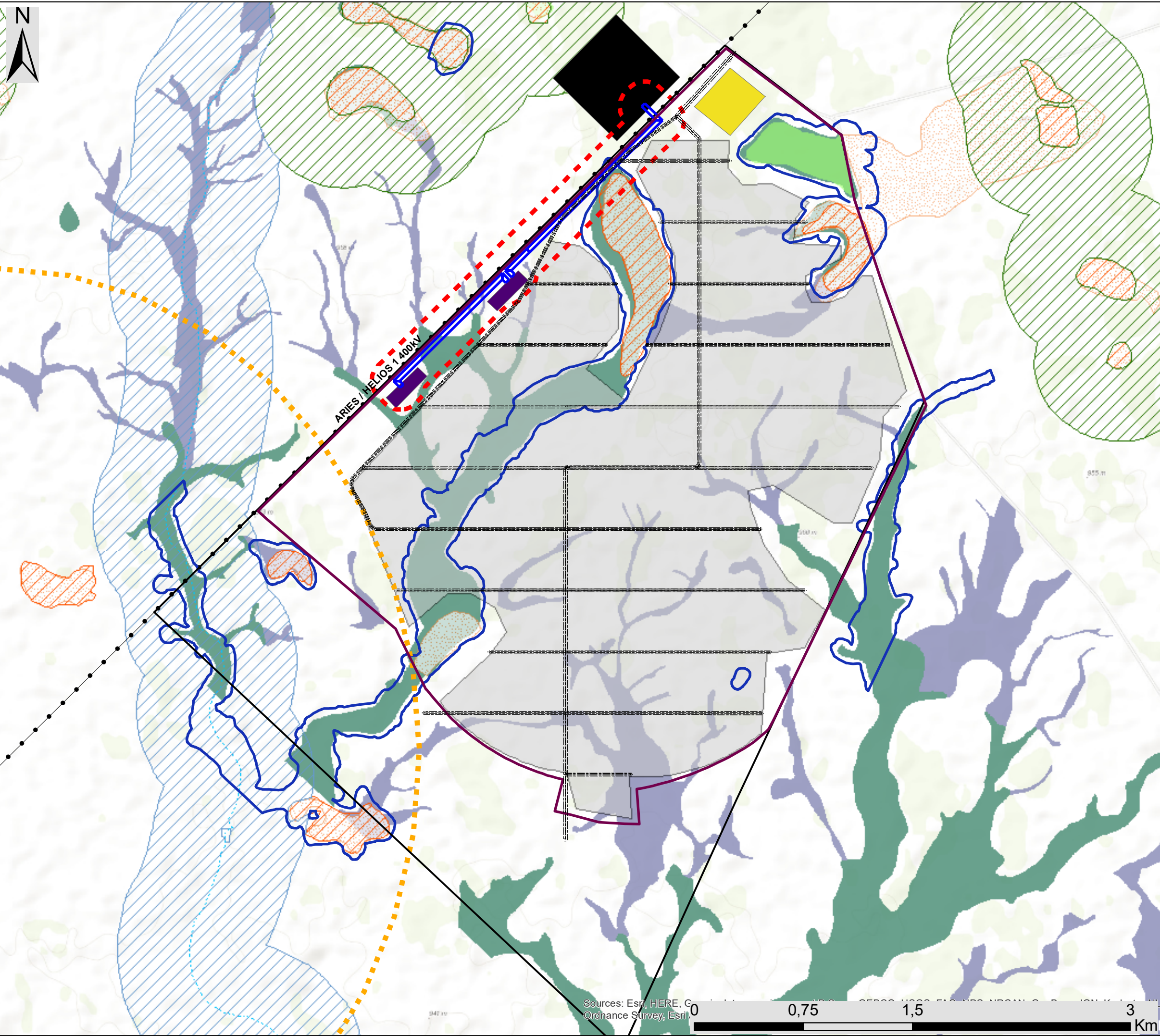
- Non-perennial river
  - Existing Power Line
  - Development Footprint
  - Development Area
- ### Sensitivity
- Martial Eagle Nest (3km Buffer)
  - Critical Biodiversity Area One (No-Go Area)
  - Critical Biodiversity Area Two
  - Ecological Support Area
  - Pan Feature and Habitat (High Sensitivity)
  - Boesmanland Vloere Habitat (High Sensitivity)
  - Ephemeral drainage features buffer (high sensitivity)
  - Ephemeral drainage and habitats (high sensitivity)
  - Minor drainage features (medium sensitivity)



Scale: 1: 28 000  
Projection: WGS\_1984  
Map Ref: Kotulo Tsatsi Energy PV3



Sources: Esri, HERE, G  
Ordnance Survey, Esri



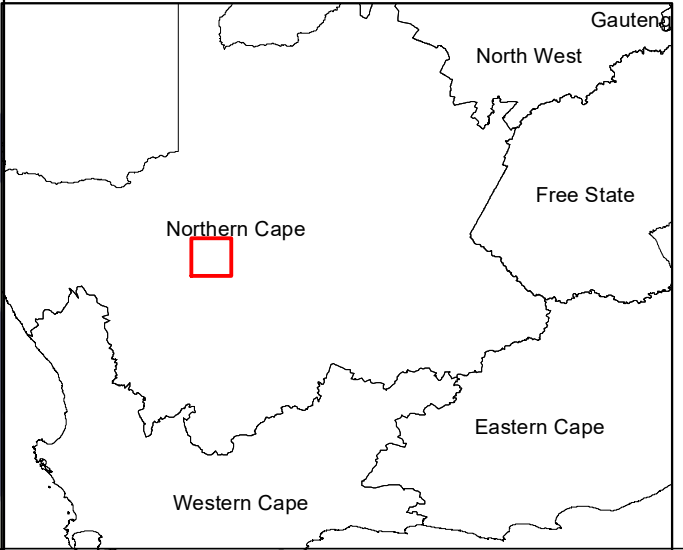
# Kotulo Tsatsi Energy PV3, Northern Cape

## Layout and Sensitivity Map

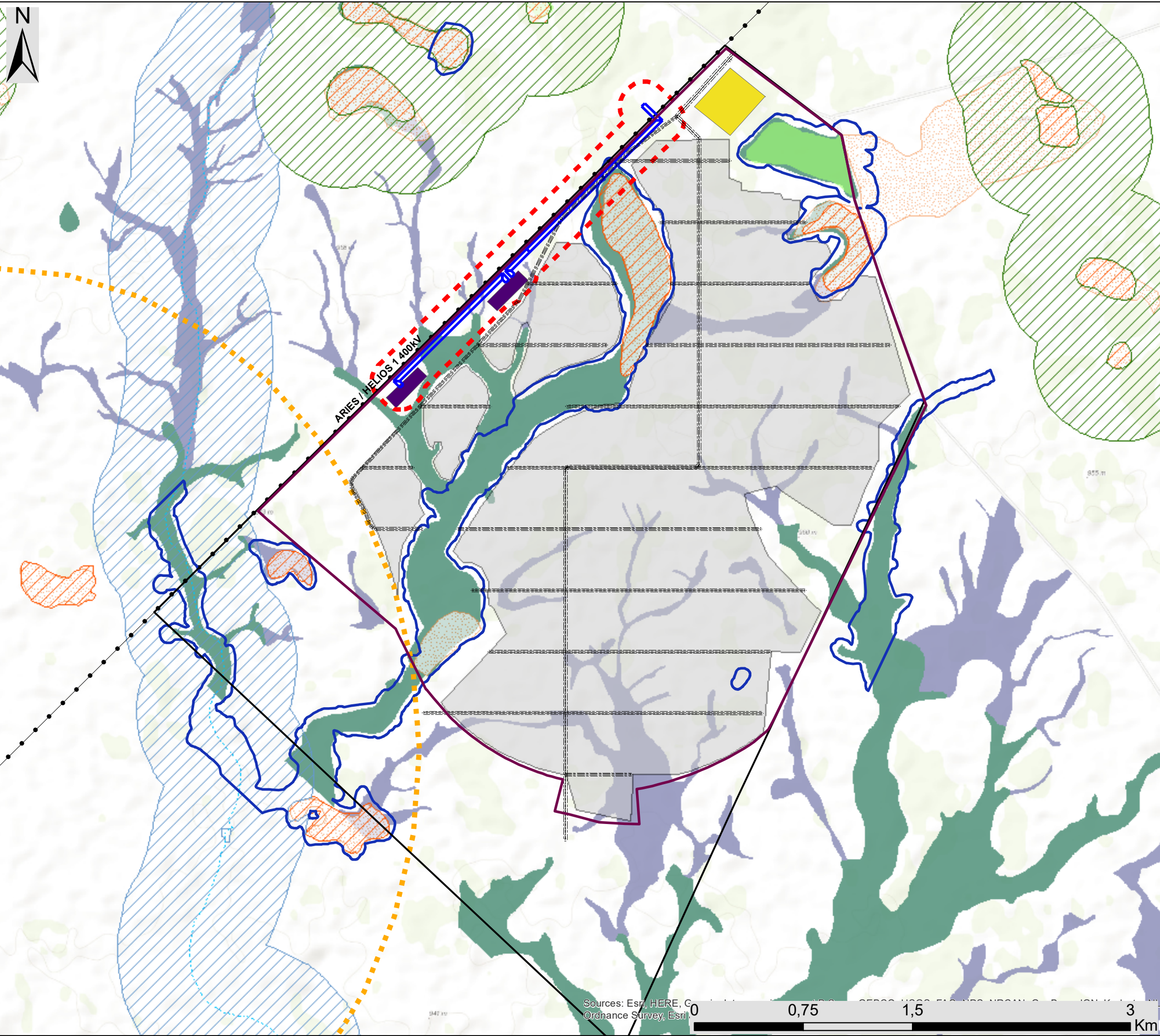
### Legend

- Non-perennial river
  - Existing Power Line
  - 400 kV substation (Authorised)
  - Development Footprint
  - Development Area
- ### PV Facility Layout
- PV Array
  - Substation and BESS Hubs
  - Grid Connection Corridor (300m assessed area)
  - 132 kV Power Lines
  - Access and Internal Roads
  - O&M and Laydown Area Hub
- ### Sensitivity
- Martial Eagle Nest (3km Buffer)
  - Critical Biodiversity Area One (No-Go Area)
  - Critical Biodiversity Area Two
  - Ecological Support Area
  - Pan Feature and Habitat (High Sensitivity)
  - Boesmanland Vloere Habitat (High Sensitivity)
  - Ephemeral drainage features buffer (high sensitivity)
  - Ephemeral drainage and habitats (high sensitivity)
  - Minor drainage features (medium sensitivity)

Scale: 1: 28 000  
 Projection: WGS 1984  
 Map Ref: Kotulo Tsatsi Energy PV3



Sources: Esri, HERE, G...  
 Ordnance Survey, Esri



# Kotulo Tsatsi Energy PV3, Northern Cape

Optimised Layout and Sensitivity Map

## Legend

- Non-perennial river
- Existing Power Line
- Development Footprint
- Development Area
- PV Facility Layout**
- Optimised PV3 Array
- Substation and BESS Hubs
- Grid Connection Corridor (300m assessed area)
- 132 kV Power Lines
- Access and Internal Roads
- O&M and Laydown Area Hub
- Sensitivity**
- Martial Eagle Nest (3km Buffer)
- Critical Biodiversity Area One (No-Go Area)
- Critical Biodiversity Area Two
- Ecological Support Area
- Pan Feature and Habitat (High Sensitivity)
- Boesmanland Vloere Habitat (High Sensitivity)
- Ephemeral drainage features buffer (high sensitivity)
- Ephemeral drainage and habitats (high sensitivity)
- Minor drainage features (medium sensitivity)

Scale: 1: 28 000  
 Projection: WGS 1984  
 Map Ref: Kotulo Tsatsi Energy PV3



Sources: Esri, HERE, G  
 Ordnance Survey, Esri