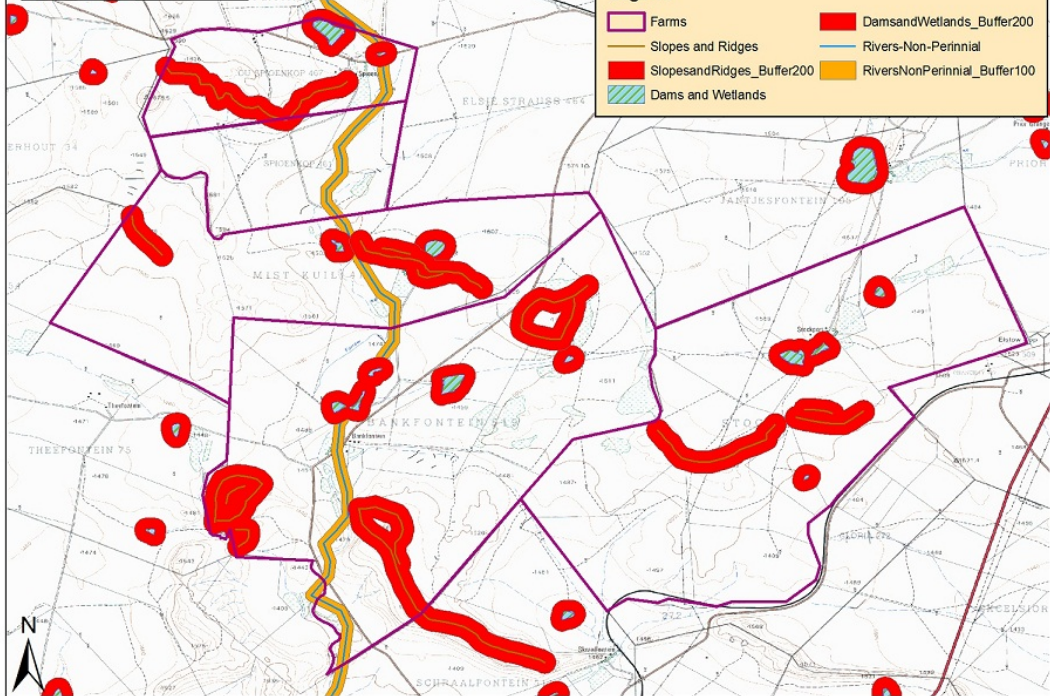


0 0.5 1 2 3 4 Kilometers

Legend

- Farms
- Slopes and Ridges
- SlopesandRidges_Buffer200
- Dams and Wetlands
- DamsandWetlands_Buffer200
- Rivers-Non-Perennial
- RiversNonPerennial_Buffer100



**Mainstream Renewable Power
Springfontein WEF**

Ecological Sensitivity

 Study Area

Draft Sensitivity

-  Very High
-  Medium - High
-  Medium
-  Low
-  Not Classified

N



1 0 1 Kilometers










**Produced for Savannah
July 2012**



**Mainstream Renewable Power
Springfontein WEF**

Ecological Features

-  **Study Area**
- Landscape Units**
-  **Dans & Pans**
-  **Drainage Lines**
-  **Farmstead**
-  **Intensive Agriculture**
-  **Plains & Flats**
-  **Rocky Hills**

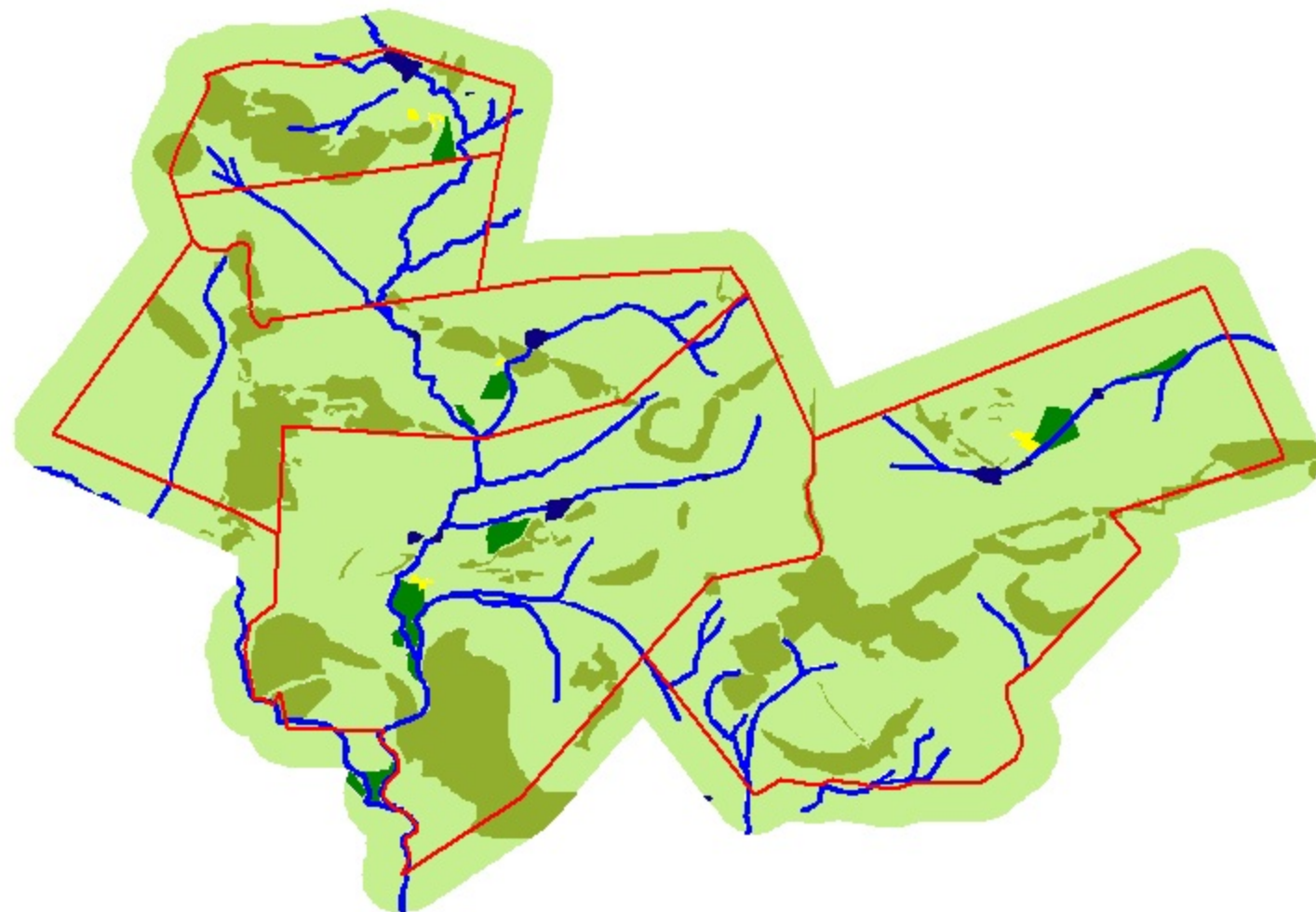
N



1 0 1 Kilometers



**Produced for Savannah
July 2012**





spionkop

NSD07 NSD10
NSD09
NSD08

mistkuil

NSD11

stockport farm house

NSD01

bankfontein

NSD05
NSD06

NSD12

NSD13

NSD03

NSD02

NSD04

5.03 km

© 2012 AfriGIS (Pty) Ltd.
Image © 2012 CDNGI

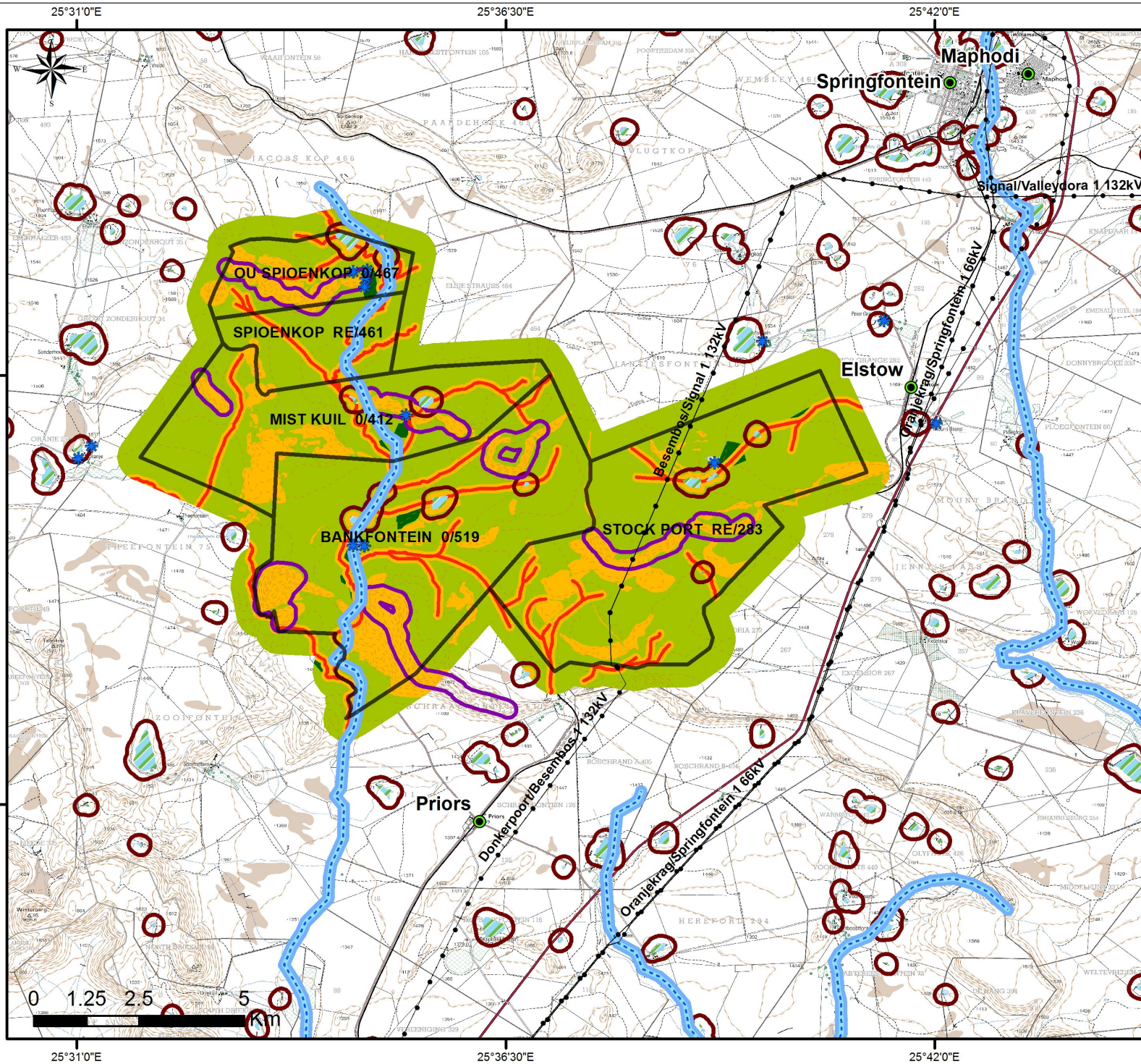
Google earth

Imagery Date: 1/1/2008

30°20'45.73" S 25°36'19.08" E elev 1508 m

Eye alt 23.21 km

Springfontein Wind Energy Facility Environmental Sensitivity Map



Legend

- Towns
 - Potential noise and visual receptors
 - Existing Power Line
 - Non-Perennial River
 - Non-Perennial river buffer
 - Wetland
 - Slopes and Ridges buffer
 - Dams and Wetlands Buffer
- Ecological Sensitivity**
- Very High
 - Medium - High
 - Medium
 - Low
 - Proposed site



25°31'0"E 25°36'30"E 25°42'0"E

30°19'30"S 30°25'0"S

Maphodi
Springfontein
Signal/Valleydora 1 132kV
Besembos/Signal 1 132kV
Elstow
Valleydora/Springfontein 1 66kV
Besembos/Signal 1 132kV
Stockport RE/283
Donkerpoort/Besembos 1 132kV
Priors
Oranierag/Springfontein 1 66kV

OU SPIOENKOP 0/467
SPIOENKOP RE/461
MIST KUIL 0/412
BANKFONTEIN 0/519

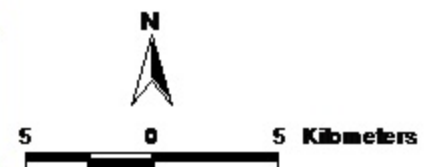
0 1.25 2.5 5 Km

25°31'0"E 25°36'30"E 25°42'0"E

30°19'30"S 30°25'0"S

**Mainstream Renewable Power
Springfontein WEF**

Vegetation Map



**Produced for Savannah
June 2012**

