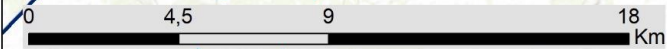
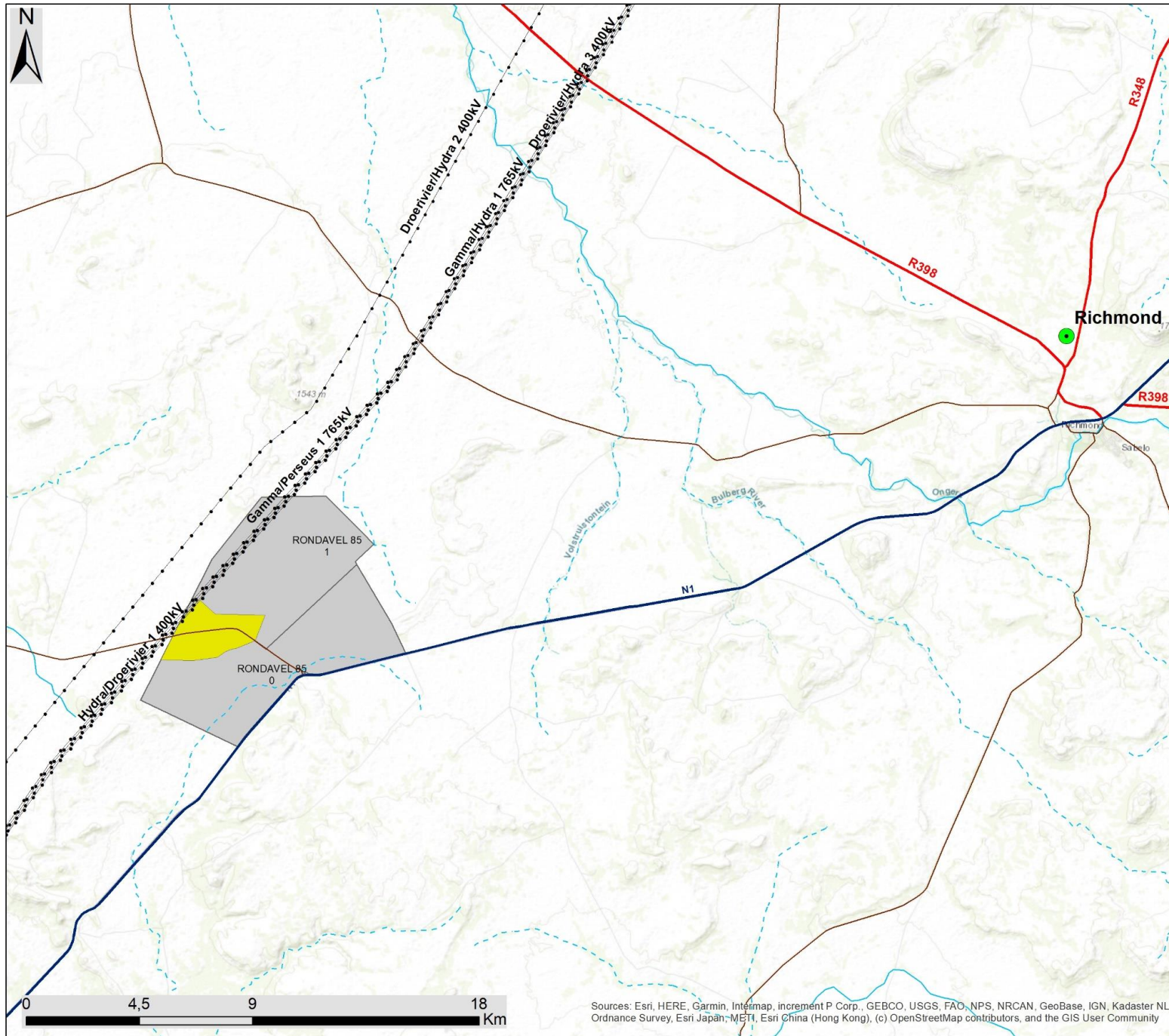


Moriri PV Facility, Richmond, Northern Cape Province

Locality Map

Legend

- Towns
- Existing Power Line
- Main Road
- National Road
- Regional Road
- - - Non-Perennial River
- Perennial River
- Project Site
- Moriri PV Facility Development Area



Sources: Esri, HERE, Garmin, Intermap, increment P Corp., GEBCO, USGS, FAO, NPS, NRCAN, GeoBase, IGN, Kadaster NL, Ordnance Survey, Esri Japan, METI, Esri China (Hong Kong), (c) OpenStreetMap contributors, and the GIS User Community

Scale: 1: 144 621
Projection: WGS_1984
Map Ref: Great Karoo REF PV2 - Locality

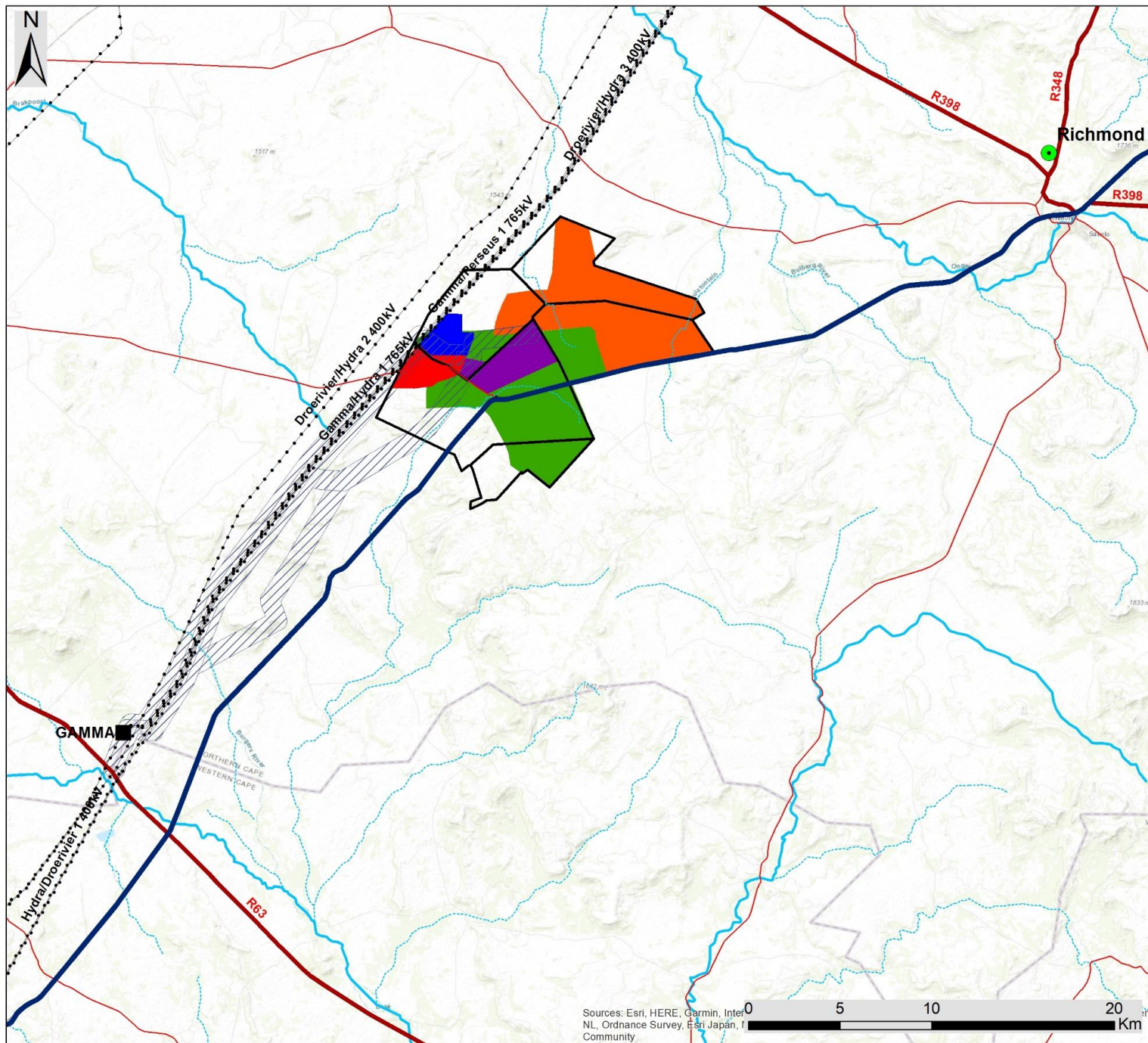


Proposed Greater Karoo Renewable Energy Cluster, Richmond, Northern Cape Province

Locality Map

Legend

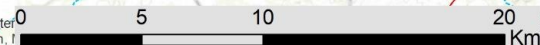
- Town
- Eskom Substation
- Existing Power Line
- National Road
- Regional Road
- Main Road
- Non-Perennial River
- Perennial River
- Grid Connection Corridor Alternatives (1km wide)
- Nku Solar PV
- Moriri Solar PV
- Kwana Solar PV
- Angora Wind Energy Facility
- Merino Wind Energy Facility
- Project Sites



Scale: 1: 250 000
 Projection: WGS_1984
 Map Ref: Great Karoo BID - Locality



Sources: Esri, HERE, Garmin, Inter
 NL, Ordnance Survey, Esri Japan, I
 Community





Moriri PV Facility, Richmond, Northern Cape Province

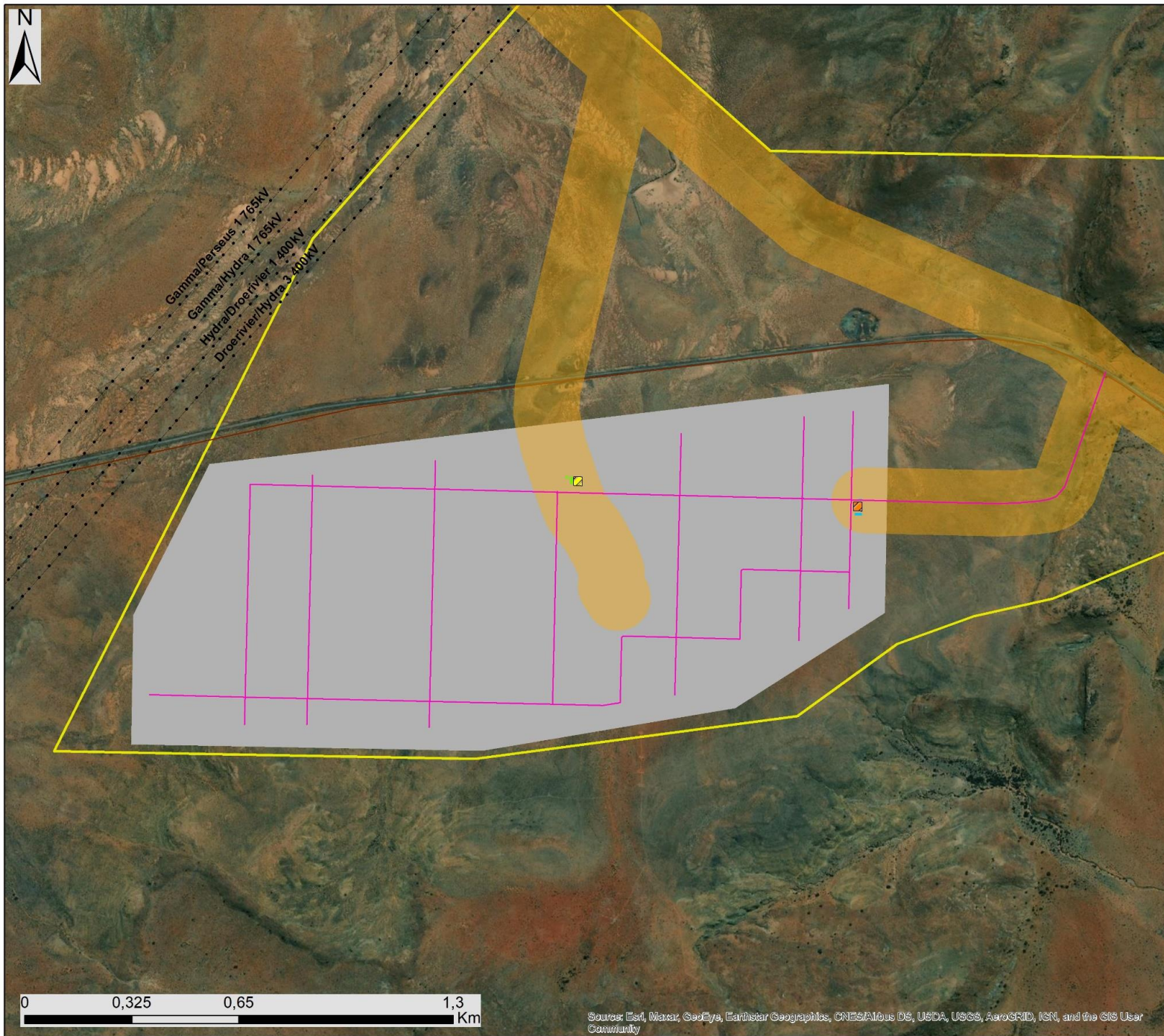
Layout Map

Legend

- Existing Power Line
- Main Road
- - - Non-Perennial River
- Perennial River
- ▭ Moriri PV Facility Development Area

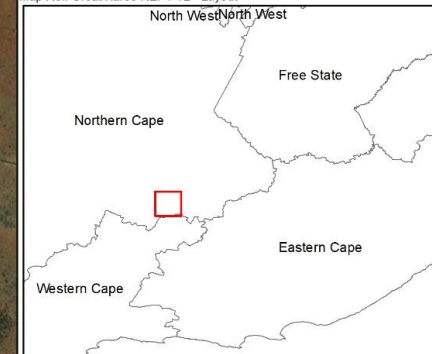
Layout Plan

- Internal Roads
- ▭ Access Roads (200m corridor)
- ▭ Moriri PV facility
- ▭ O&M and Security Building Hub - Alternative 1
- ▭ O&M and Security Building Hub - Alternative 2
- ▭ Onsite Substation - Alternative 1
- ▭ Onsite Substation - Alternative 2



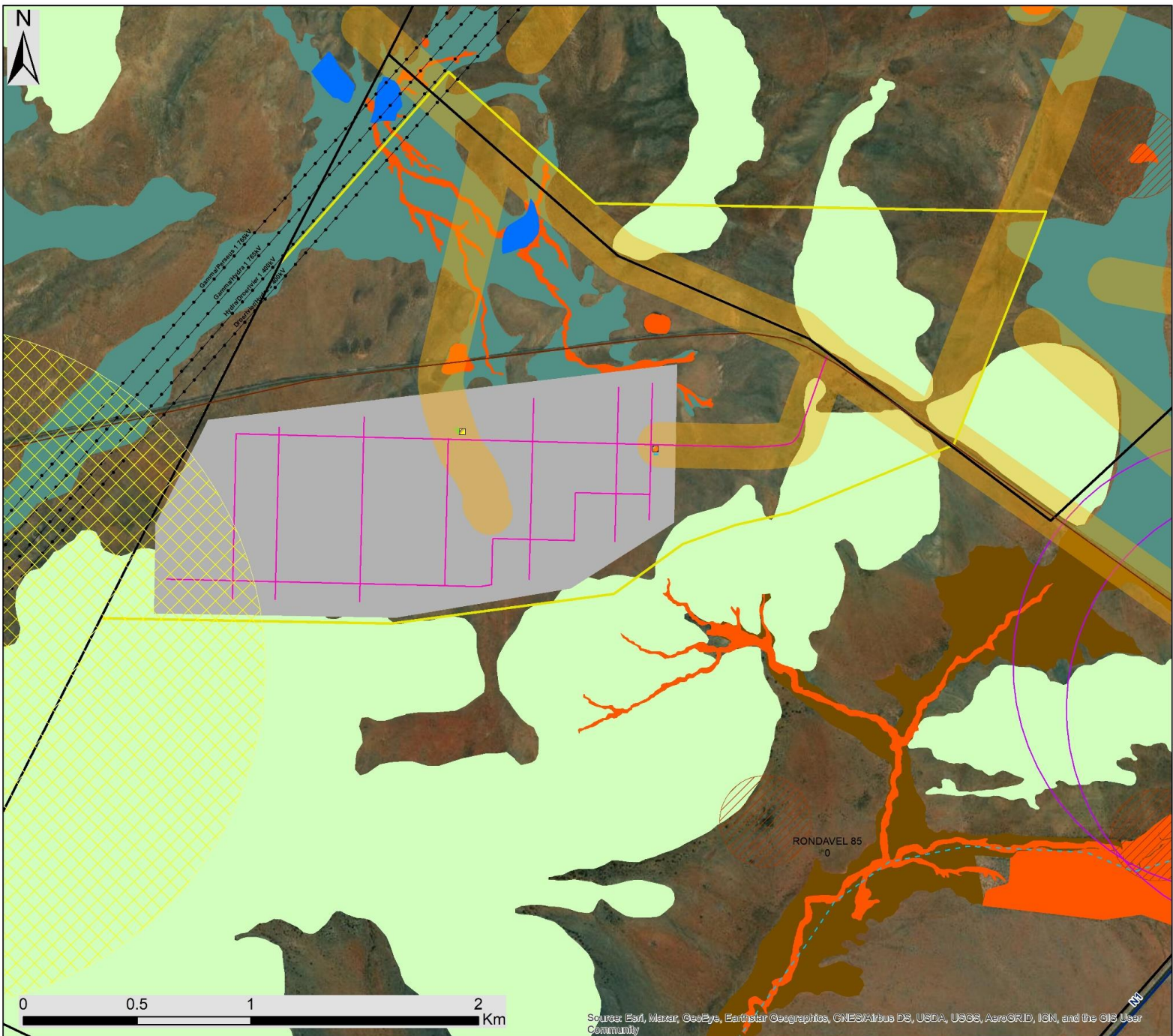
savannah
environmental

Scale: 1: 144 621
Projection: WGS_1984
Map Ref: Great Karoo REF PV2 - Layout



0 0,325 0,65 1,3
Km

Sources: Esri, Maxar, GeoEye, Earthstar Geographics, CNES/Airbus DS, USDA, USGS, AeroGRID, IGN, and the GIS User Community



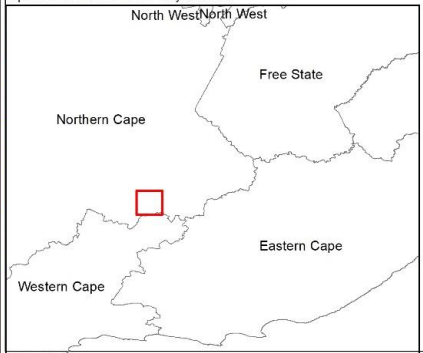
Moriri PV Facility, Richmond, Northern Cape Province

Sensitivity & Layout Map

Legend

- Existing Power Line
 - Main Road
 - Non-Perennial River
 - Perennial River
 - NFEPA Wetlands
 - Project Site
 - Moriri PV Facility Development Area
- ### Layout Plan
- Internal Roads
 - O&M and Security Building Hub - Alternative 1
 - O&M and Security Building Hub - Alternative 2
 - Onsite Substation - Alternative 1
 - Onsite Substation - Alternative 2
 - Access Roads (200m corridor)
 - Moriri PV facility
- ### Environmental Sensitivities
- High Avifauna Sensitivity (200m no-panel zone)
 - Tawny Eagle Nest - High Avifauna Sensitivity (1.5km Buffer)
 - Heritage Structures (1km Buffer)
 - High Bat Sensitivity Areas
 - High Ecological Sensitivity
 - High Medium Ecological Sensitivity
 - Very High Ecological Sensitivity

Scale: 1: 144 621
 Projection: WGS_1984
 Map Ref: Great Karoo Moriri - Layout&Sens



Source: Esri, Maxar, GeoEye, Earthstar Geographics, CNES/Airbus DS, USDA, USGS, AeroGRID, IGN, and the GIS User Community

Proposed Greater Karoo Renewable Energy Cluster, Richmond, Northern Cape Province

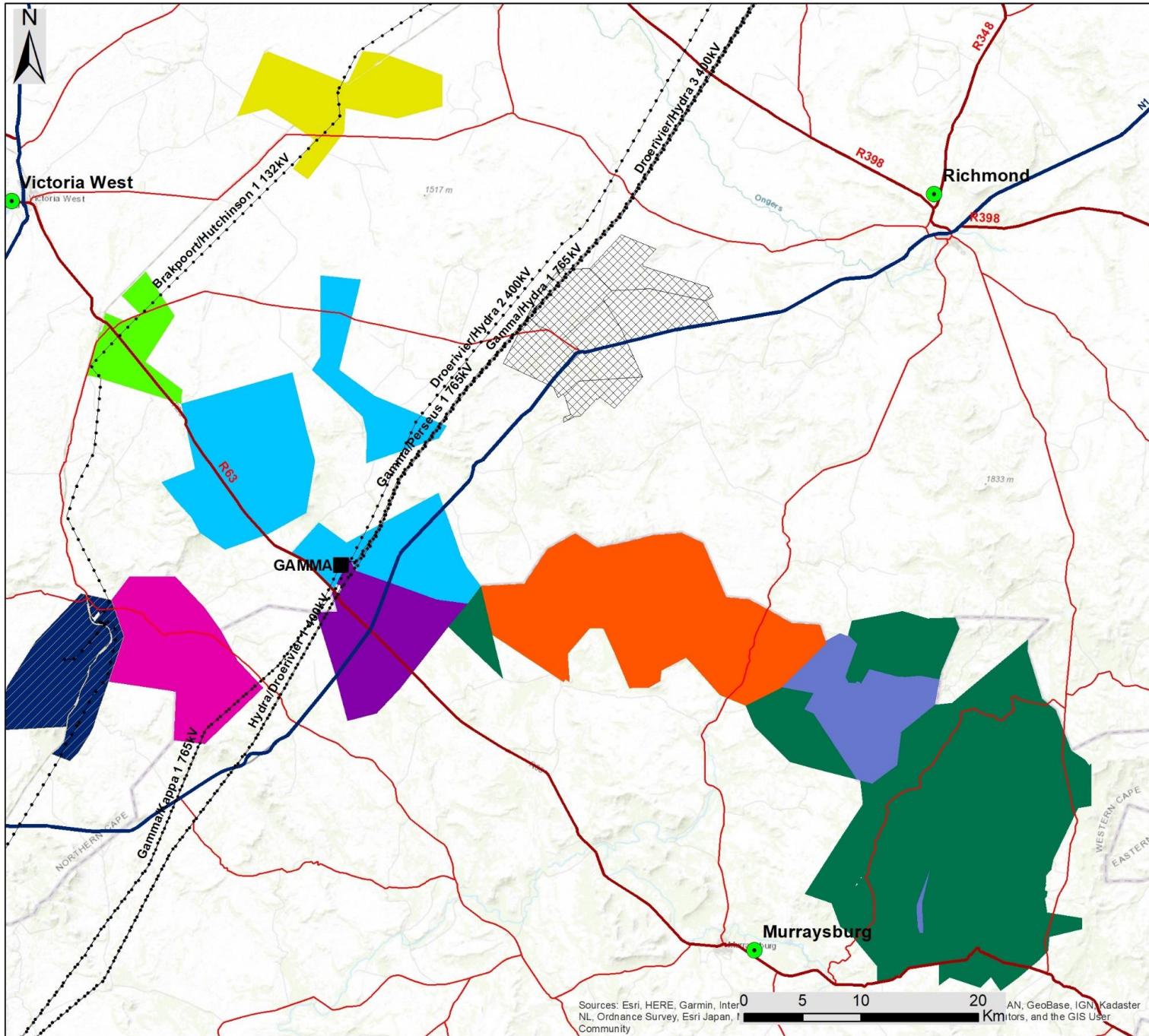
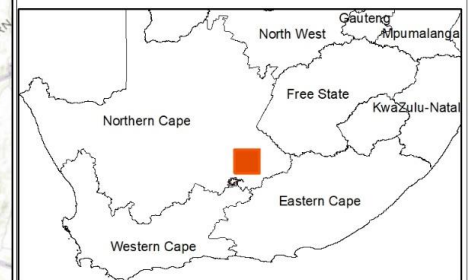
Cumulative Map

Legend

- Town
 - Eskom Substation
 - Existing Power Line
 - National Road
 - Regional Road
 - Main Road
 - Great Karoo Renewable Energy Cluster
- Known Authorised Renewable Energy Facilities (based on affected property)**
- Nobelsfield Wind Energy Facility
 - Bietjiesfontein Solar Energy Facility
 - Karoo Renewable Energy Facility
 - Brakpoort Solar PV Facility
 - Umsinde Emoyeni Wind Energy Facility
 - Aurora Solar PV Facility
 - Mainstream Renewable Energy Cluster
 - Ishwati Emoyeni Wind Energy Facility
 - Trouberg Wind Energy Facility
 - Modderfontein Wind Energy Facility

Scale: 1: 250 000
 Projection: WGS_1984
 Map Ref: Great Karoo Cumulative

savannah
 environmental



Sources: Esri, HERE, Garmin, InterNL, Ordnance Survey, Esri Japan, AN, GeoBase, IGN, Kadaster, and the GIS User Community

